



**Silesian University in Opava**

School of Business Administration in Karvina

**THE MONTHLY UNEMPLOYMENT RATE IN REGIONS: EMPIRICAL  
EVIDENCE FROM THE VISEGRAD GROUP COUNTRIES**

**Michal Tvrdoň**

Department of Economics, Silesian University, Czech Republic

June 20, 2013, VALTICE, Czech Republic



# METHODOLOGY

- simple comparison
- registered unemployment rate
- monthly data (national labour office) 2005 till 2012
- the relevant administrative level (NUTS 2 or NUTS 3 level)
- not seasonally adjusted

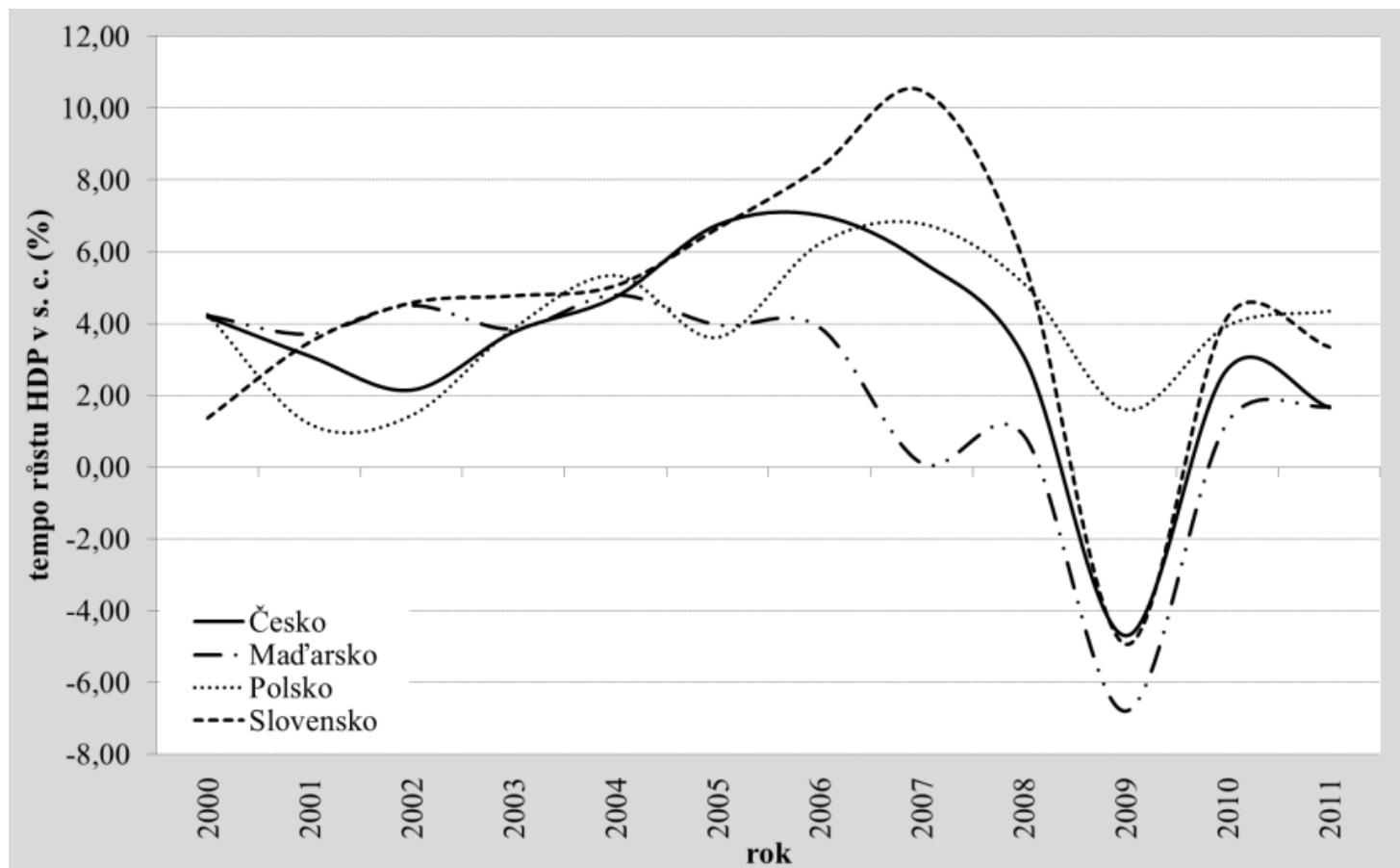


# INTRODUCTION

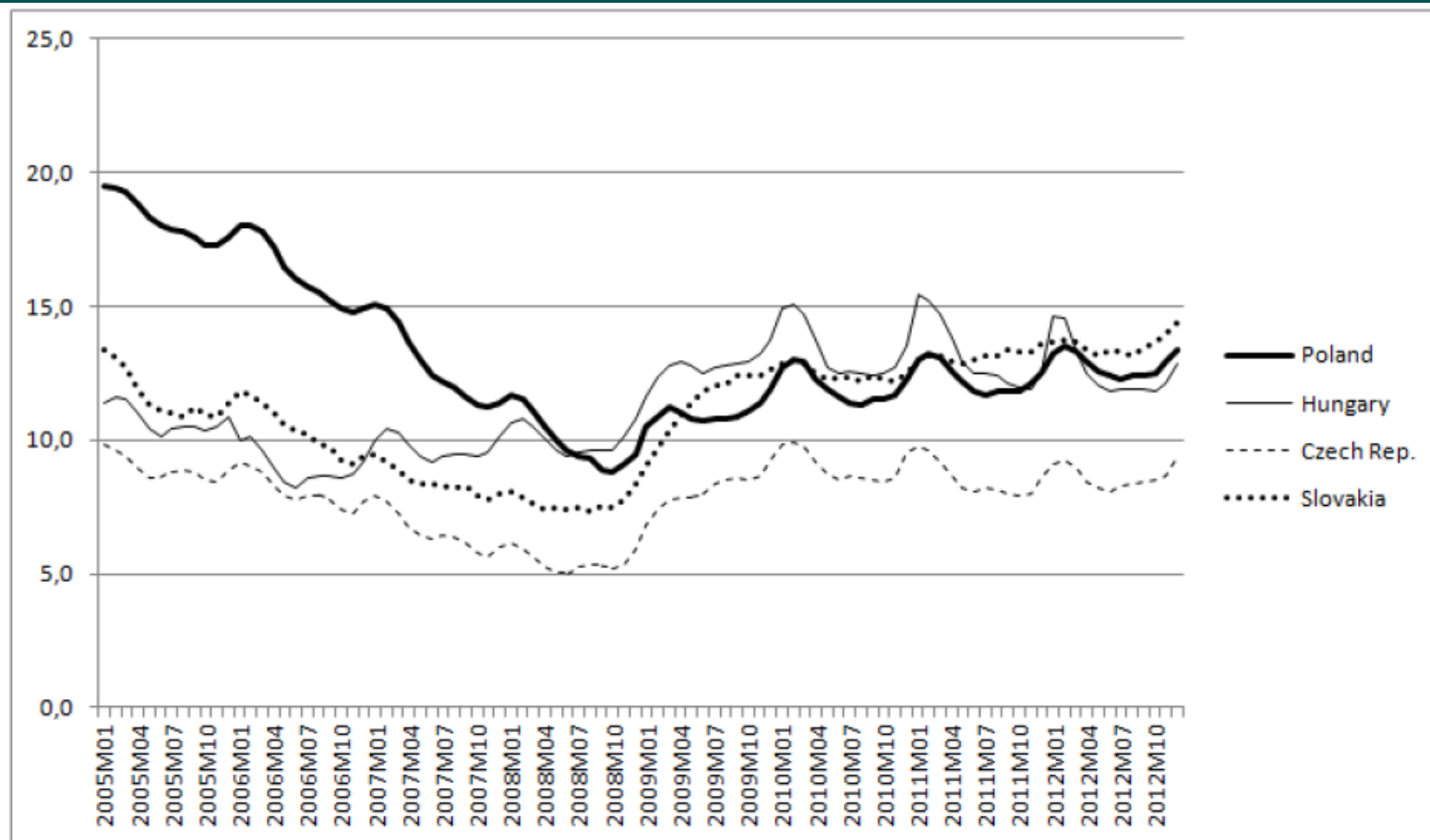
- Paper deals with regional labour market performance
- competitiveness of regions
- economic crisis and its influence on the labour market



# Real GDP Growth in the Visegrad group, quarterly data 2000-2011



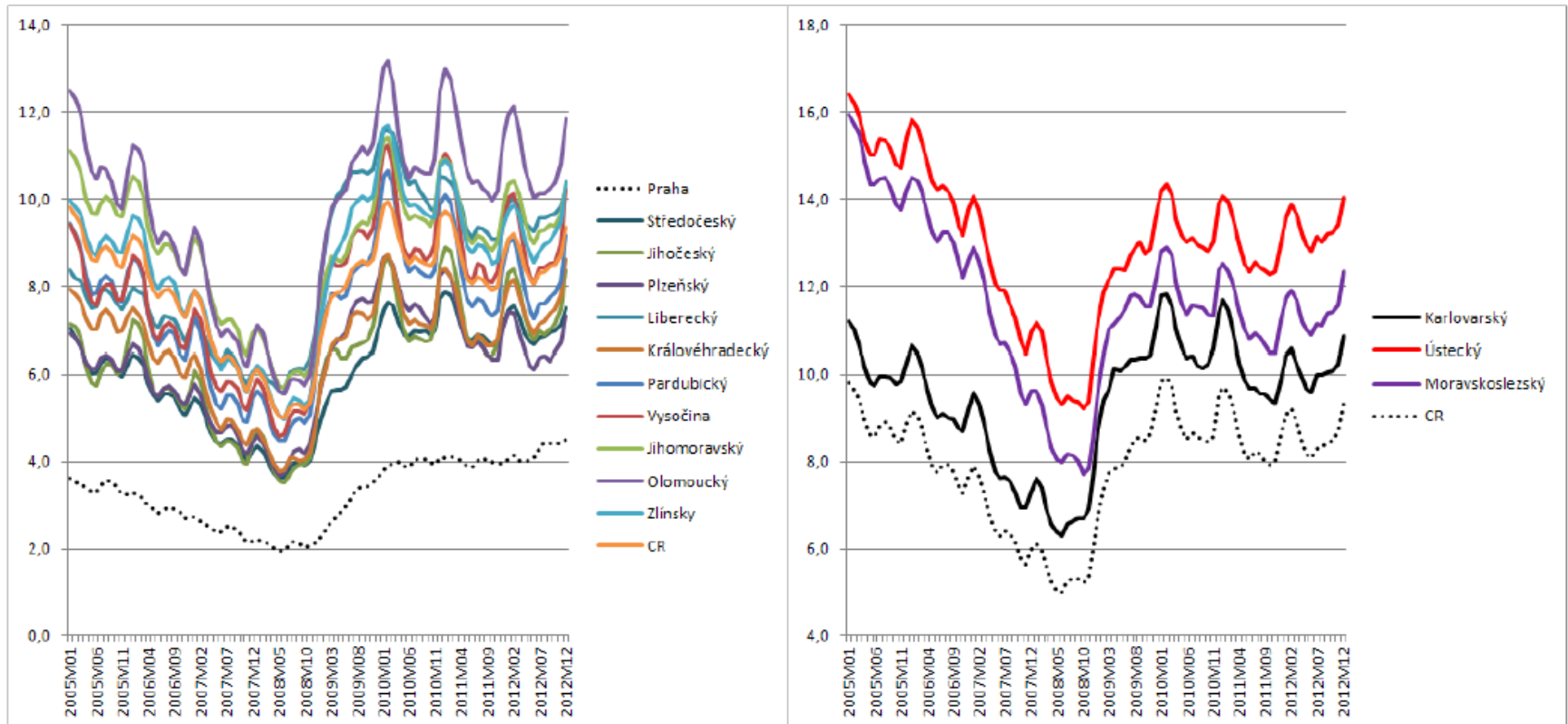
# Development of the national unemployment rate in the Visegrad group, monthly data 2005-2012



Source: National labour market authorities



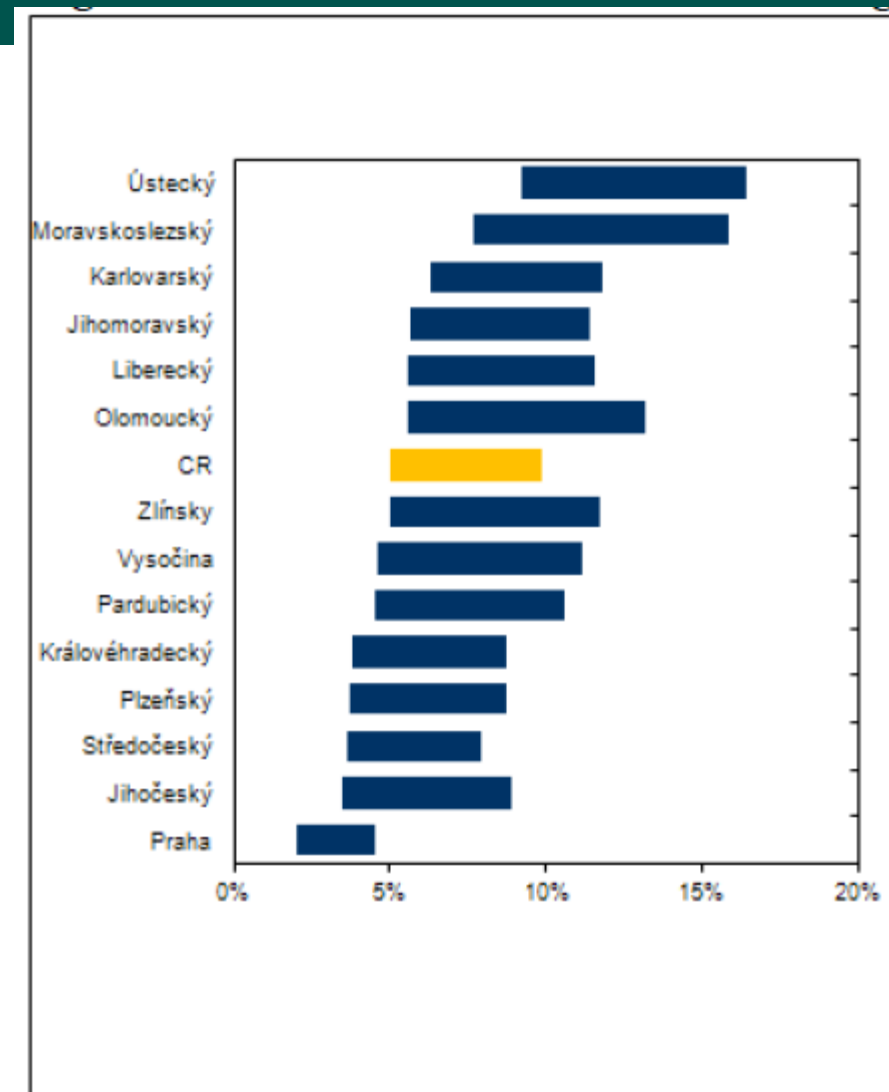
# Regional unemployment rate in the Czech Republic, monthly data 2005-2012



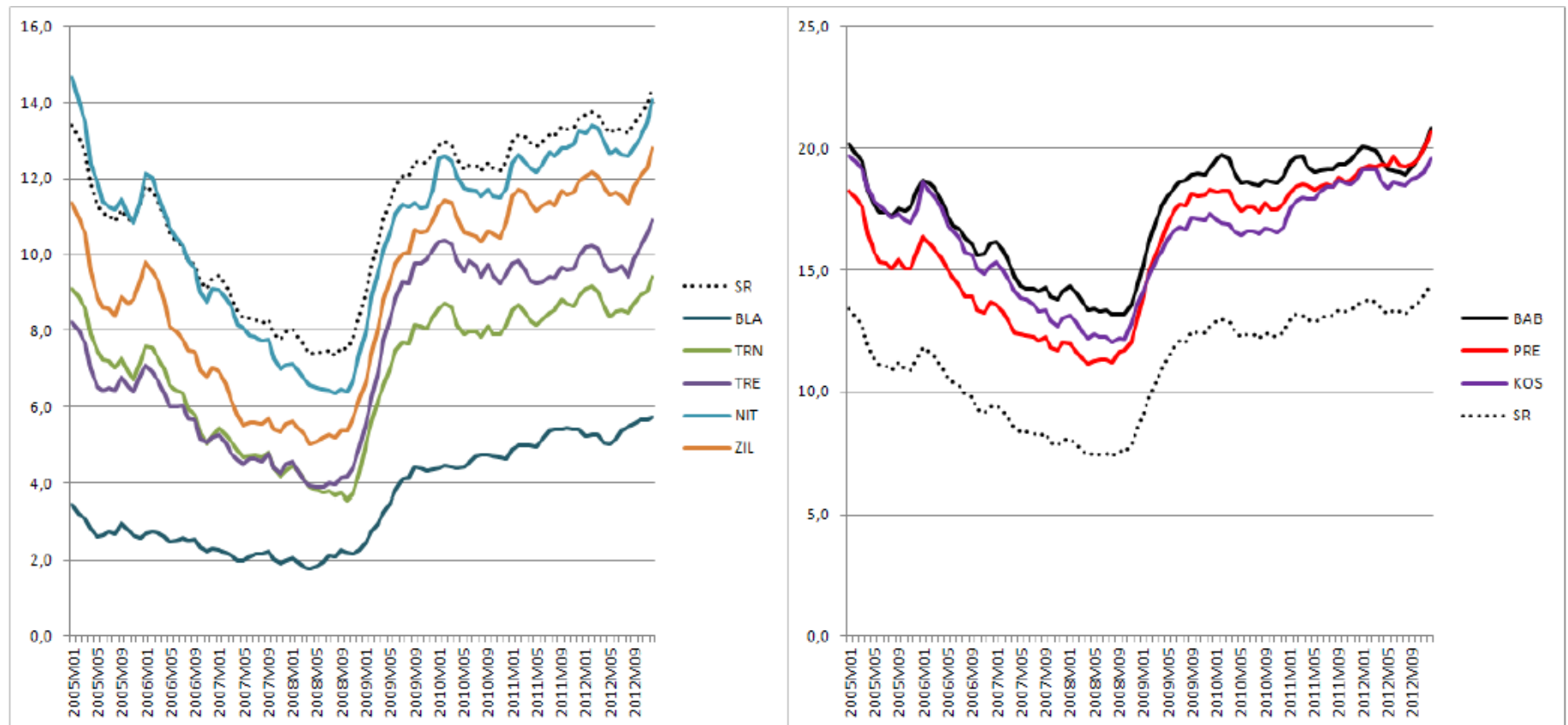
Source: Czech Ministry of Labour and Social Affairs



# *The minimum and maximum range of regional unemployment rate in the Czech Republic*



# Regional unemployment rate in Slovakia, monthly data 2005-2012

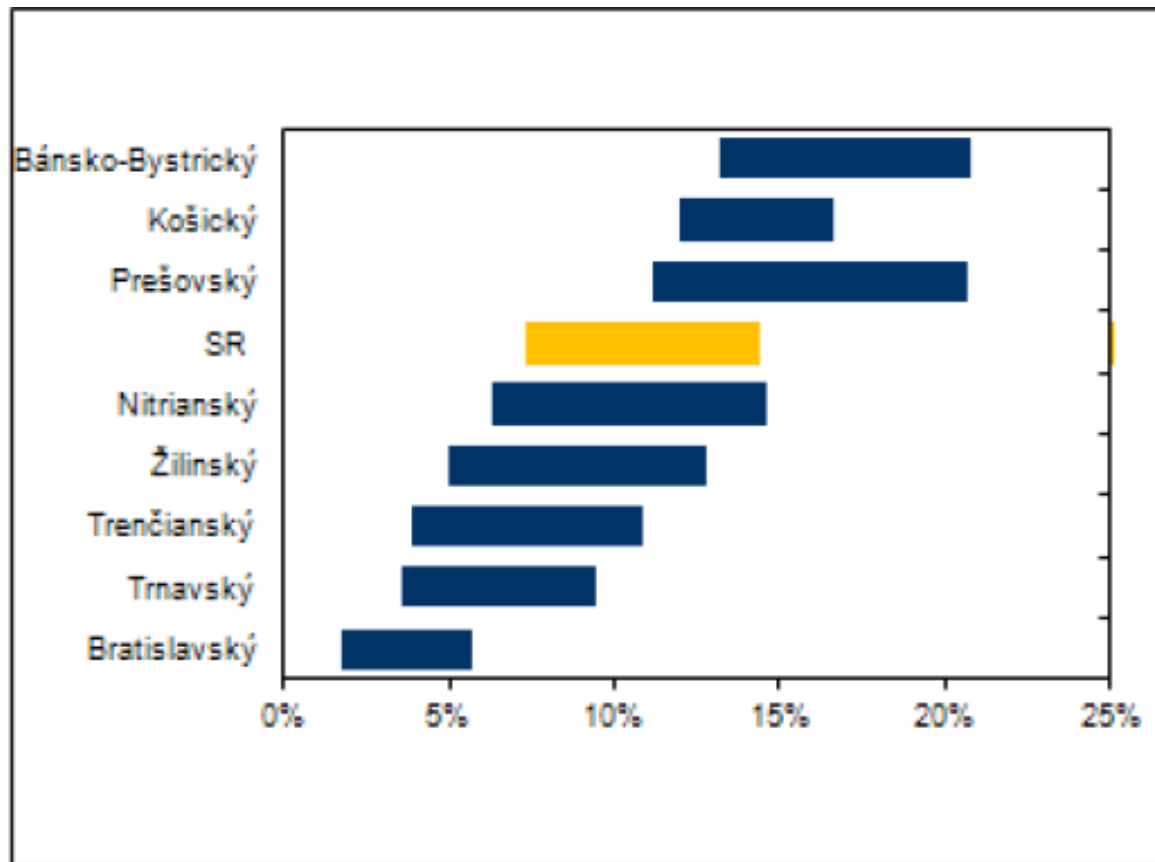


Source: Ministry of Labour, Social Affairs and Family of the Slovak Republic

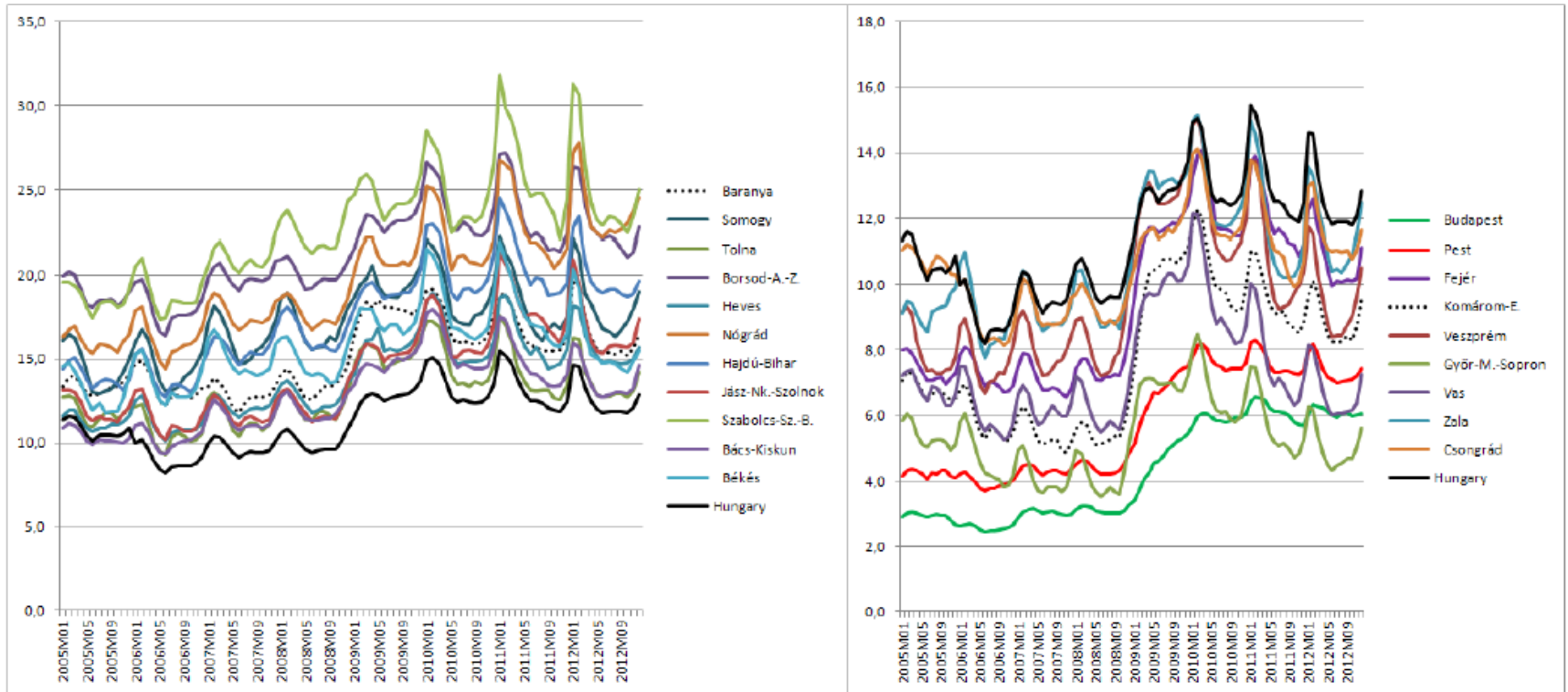




# *The minimum and maximum range of regional unemployment rate in Slovakia*



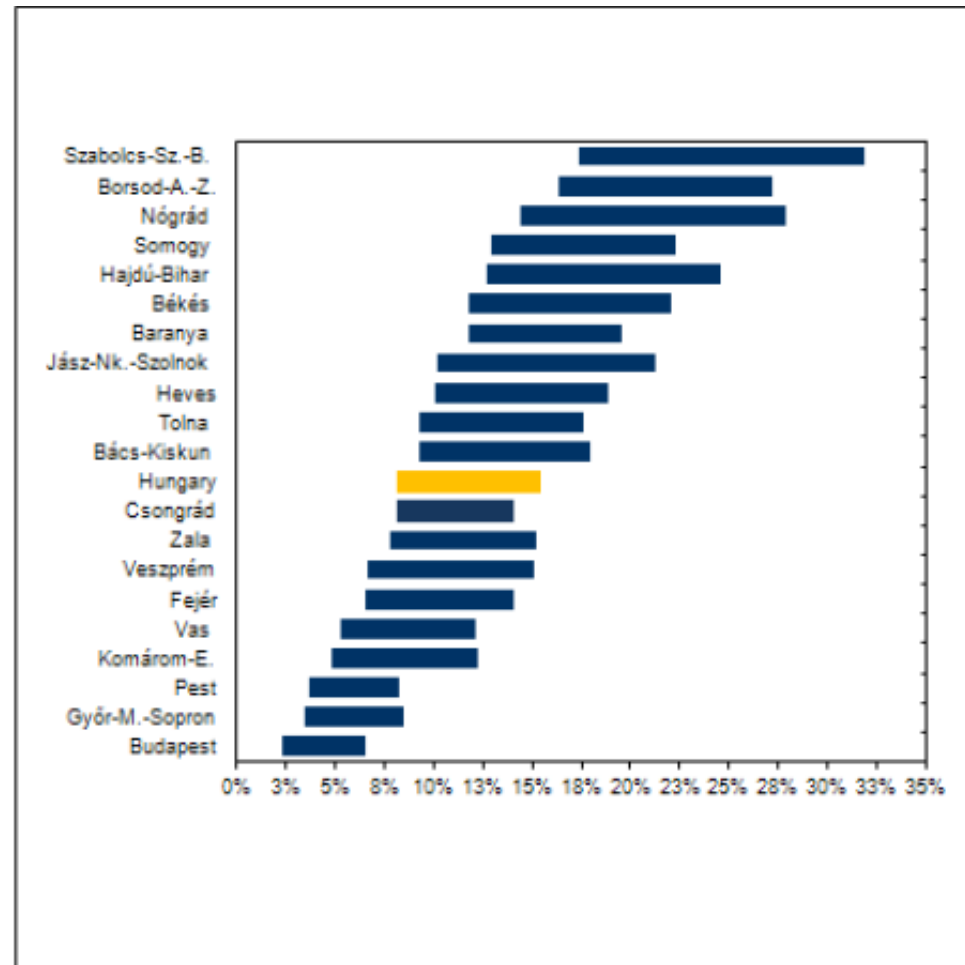
# Regional unemployment rate in Hungary, monthly data 2005-2012



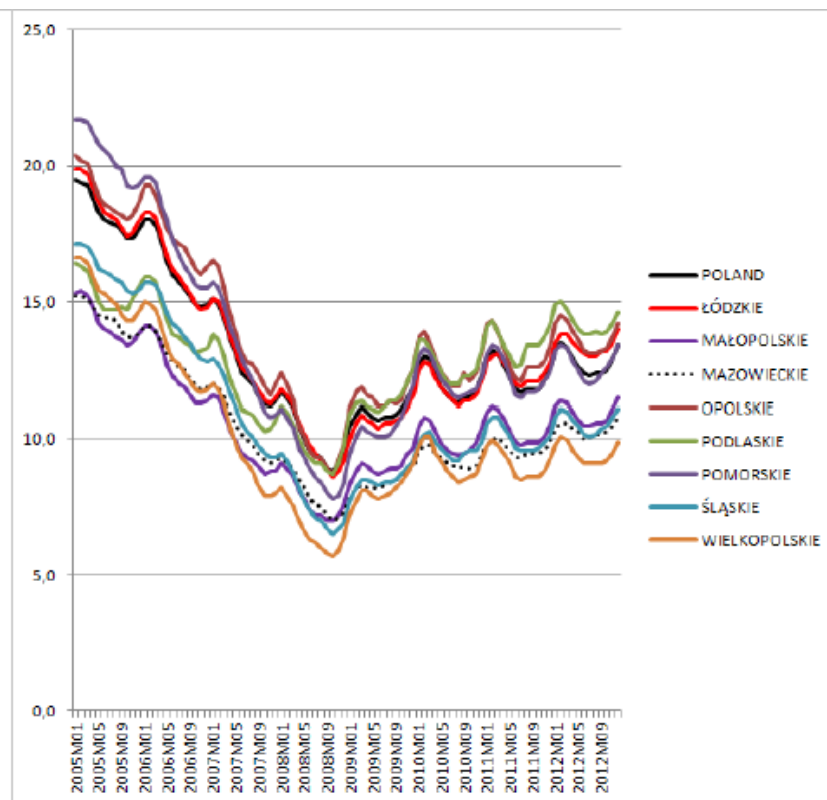
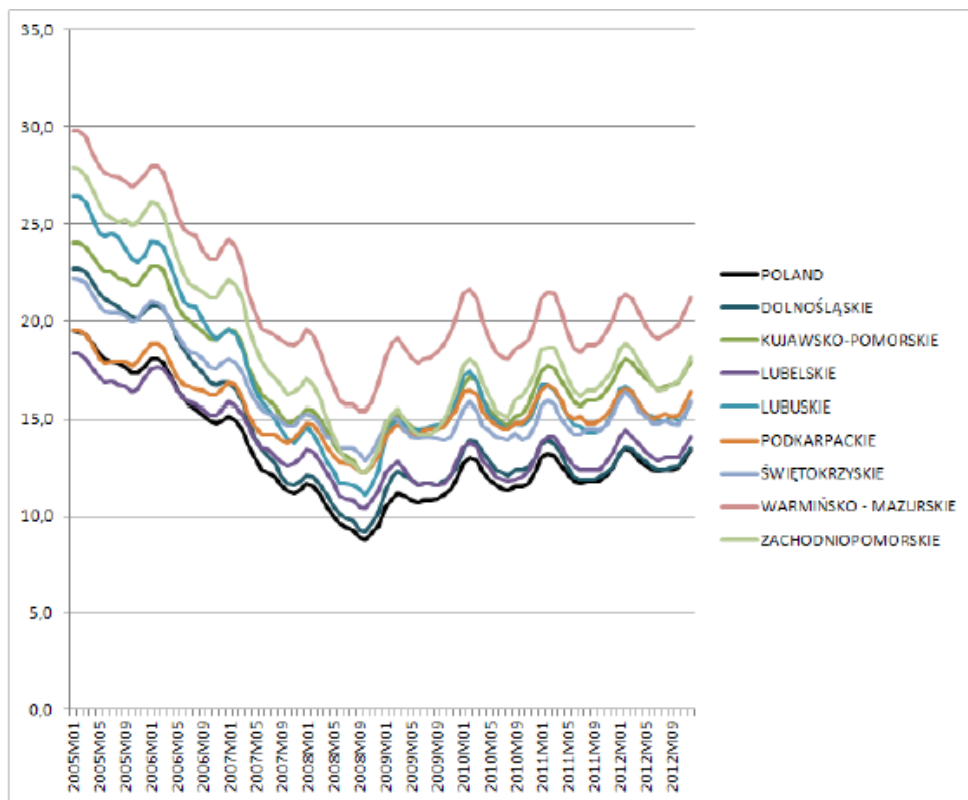
Source: Hungarian Ministry of Social Affairs and Labour



# *The minimum and maximum range of regional unemployment rate in Hungary*



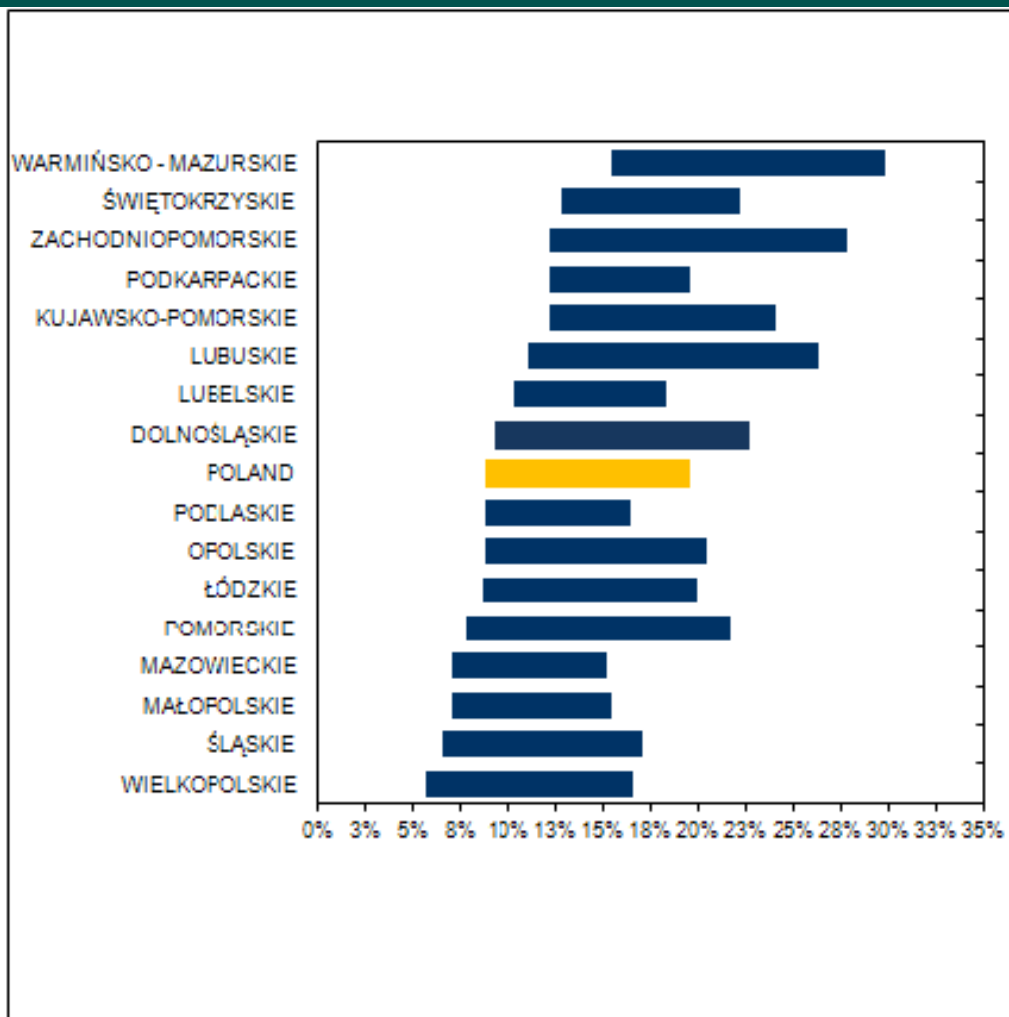
# Regional unemployment rate in Poland, monthly data 2005-2012



Source: Ministry of Labour and Social Policy of the Republic of Poland



# *The minimum and maximum range of regional unemployment rate in Poland*



# CONCLUSIONS

- significant economic growth in pre-crisis period
- a huge gap between the region of the capital city and the rest of the country
- strong impact of the crisis on the labour market both in national and regional level



***THANK YOU FOR YOUR ATTENTION  
AND  
HAVE A NICE DAY.***

tvrdon@opf.slu.cz

