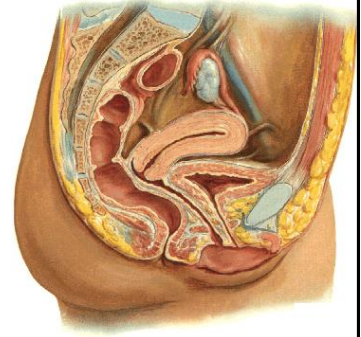


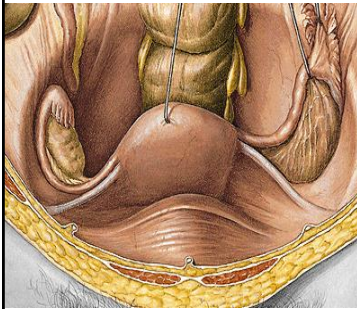
Female genital organs

Internal female genital organs

- Ovary (*ovarium*)
- Phalopian tube (*tuba uterina*)
- Uterus
- Vagina



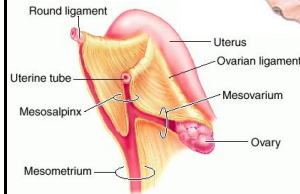
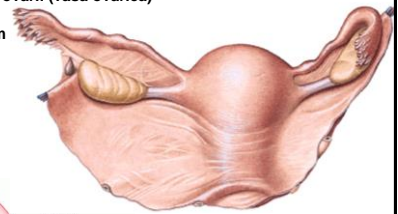
OVARY



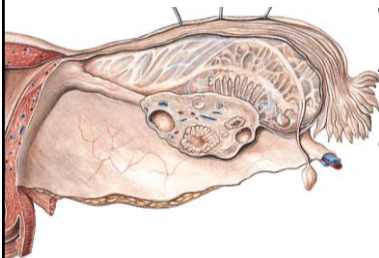
- Extremitas tubaria (superior)
- Extremitas uterina (inferior)
- Facies medialis
- Facies lateralis
- Margo mesovaricus (anterior)
- Margo liber (posterior)

Lig. suspensorium ovarii (vasa ovarica)

- Lig. ovarii proprium
- Hilus ovarii
- Mesovarium
- Lig. latum uteri



Histology of ovarium

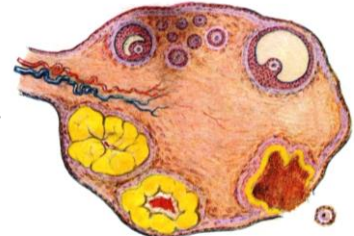


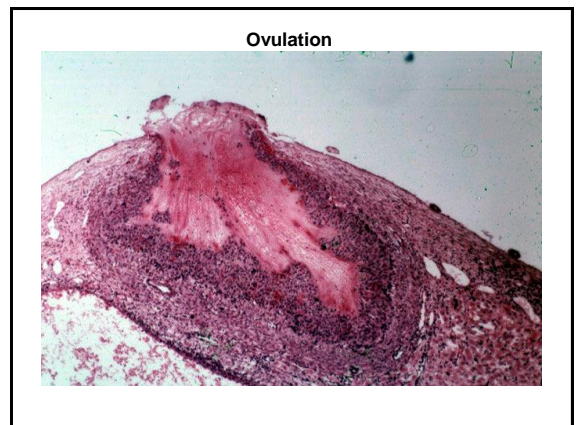
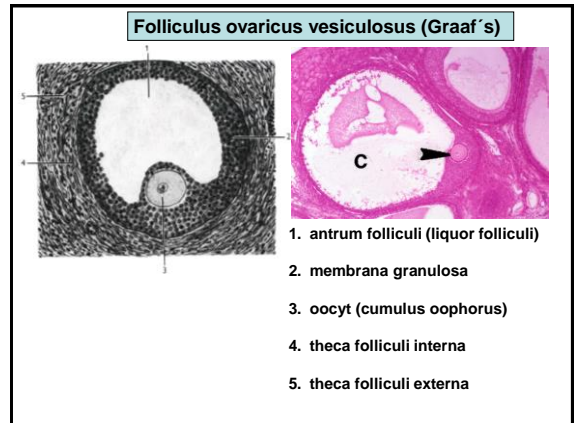
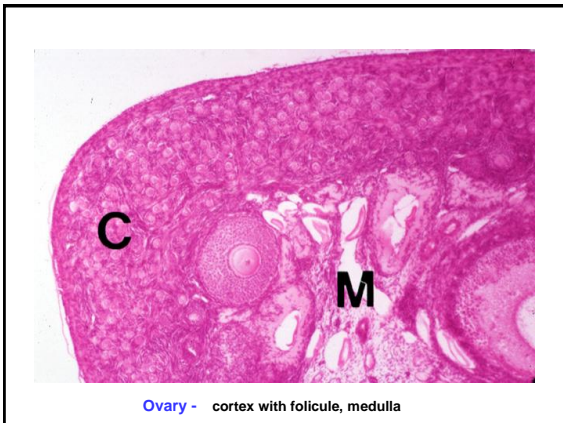
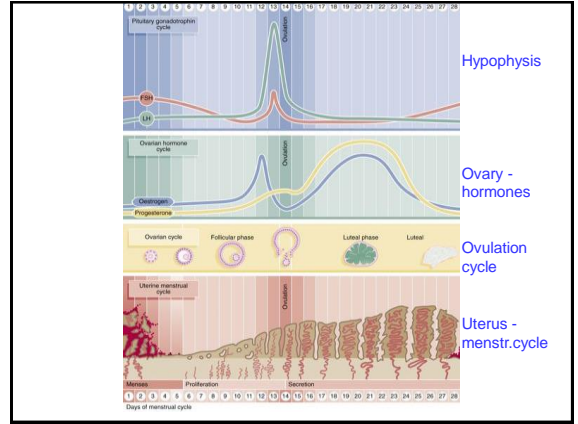
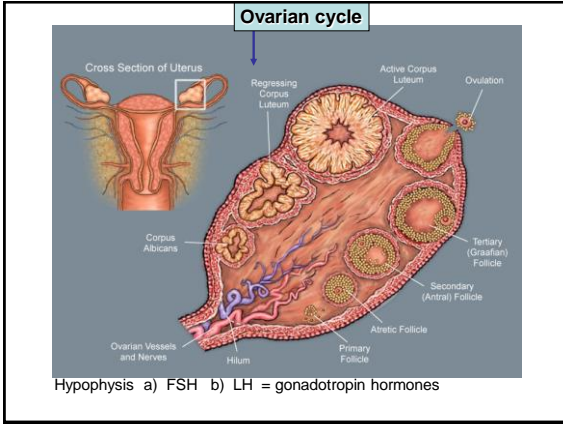
- Germinative epithelium
- Tunica albuginea
- Cortex ovarii
- folliculi ovarici
- corpora lutea
- Medulla ovarii

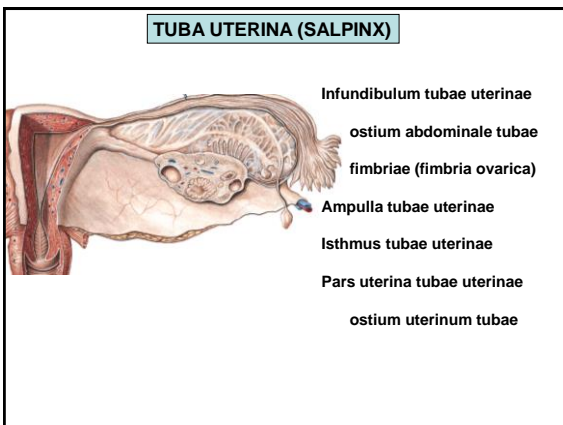
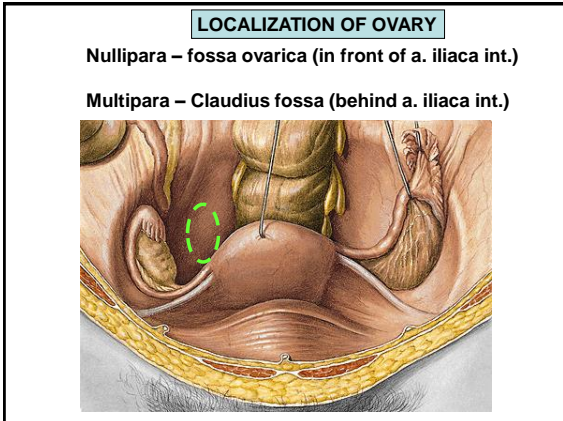
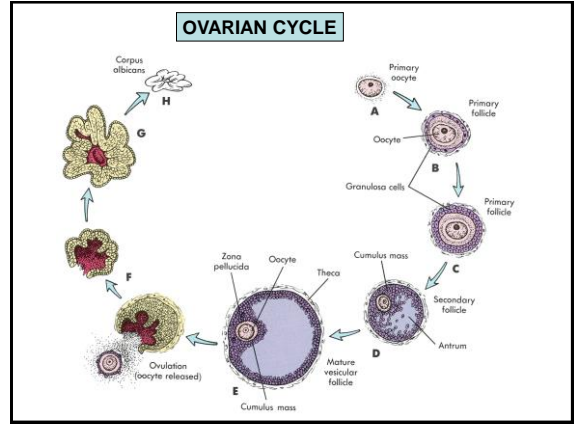
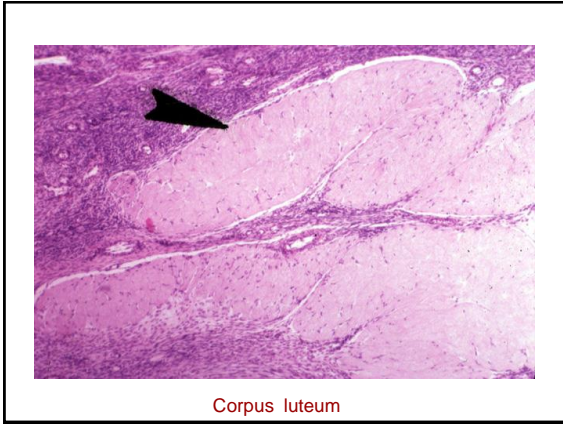
Folliculi ovarici primarii (300 000- 400 000)

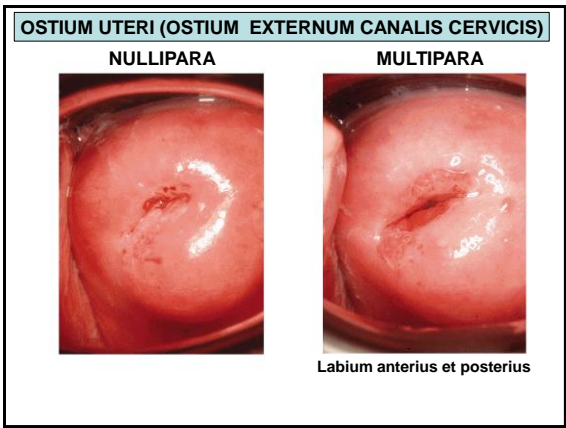
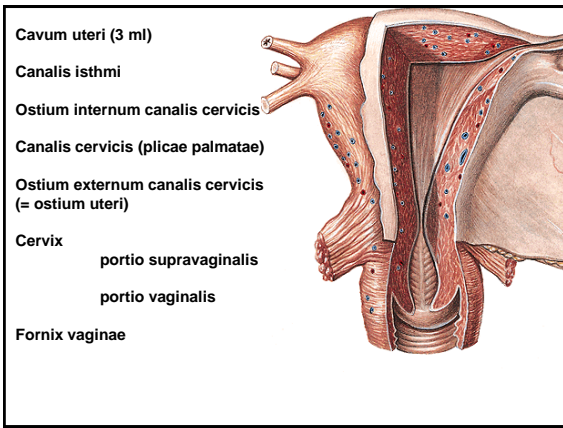
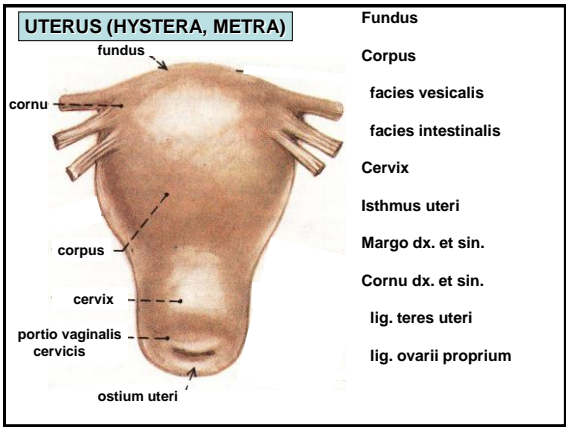
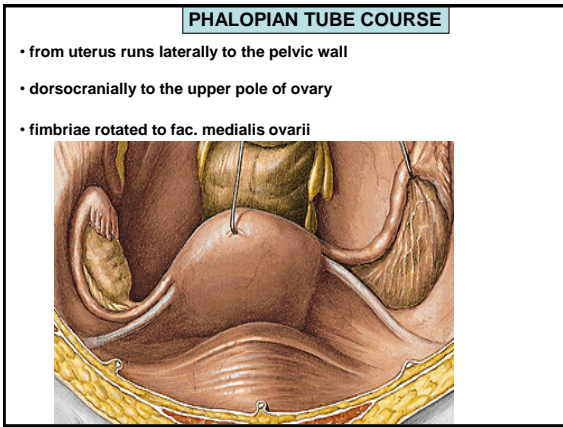
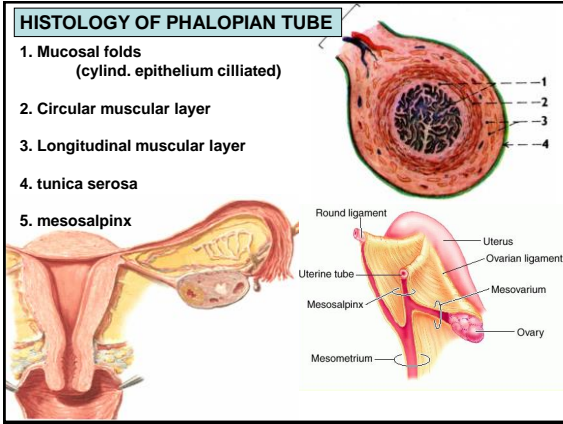
Folliculus ovaricus vesiculosus (Graaf's)

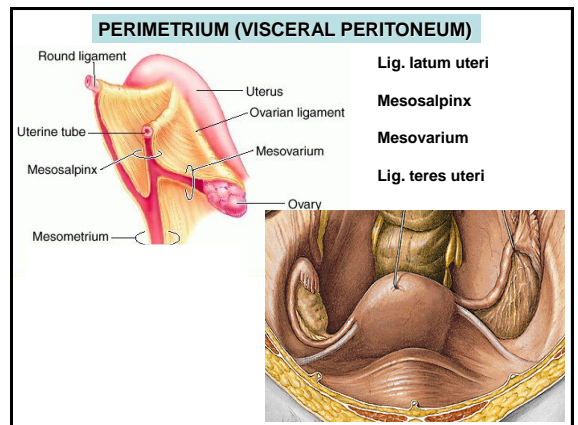
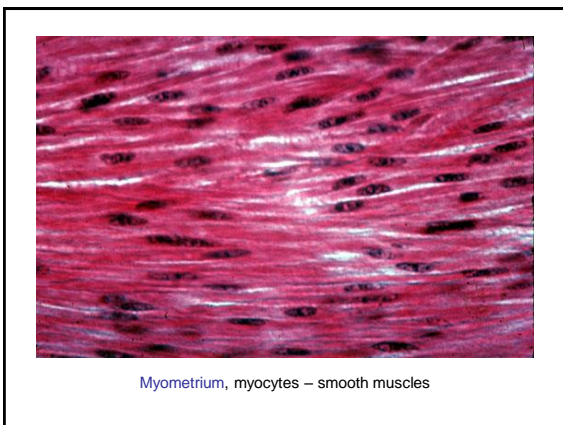
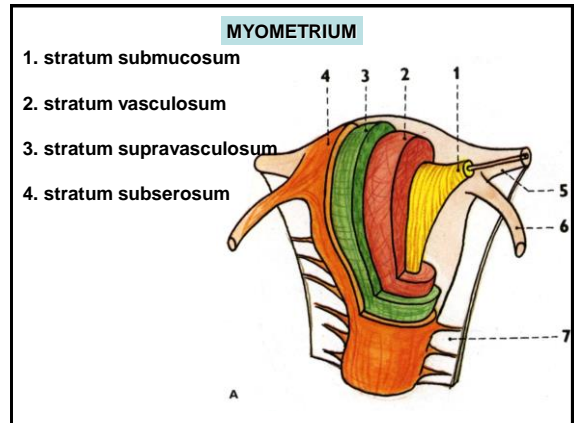
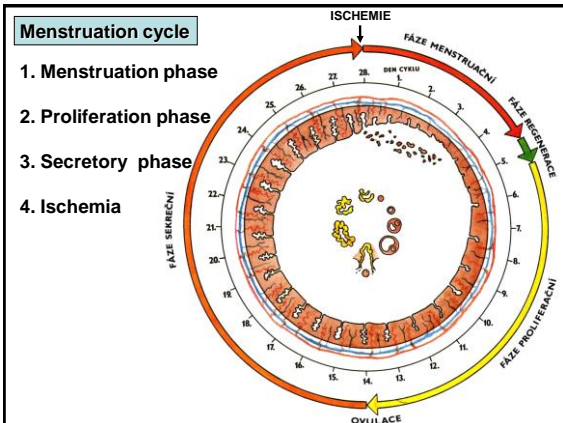
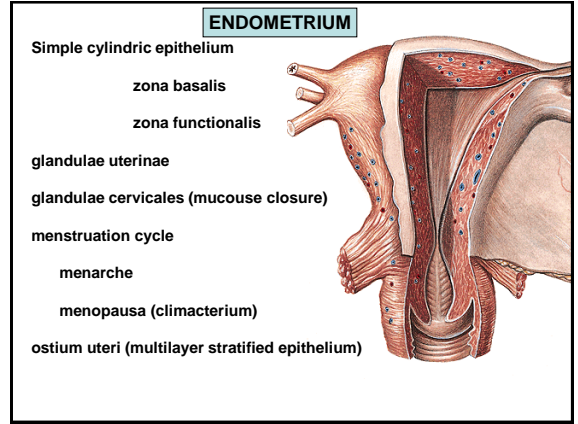
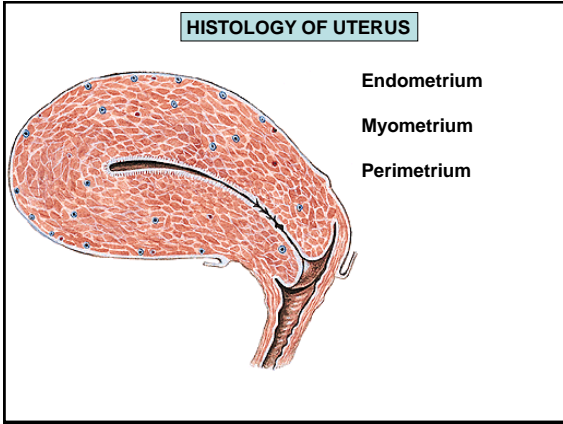
- Ovulation
- Corpus luteum
- menstruationis
- graviditatis
- Corpus albicans

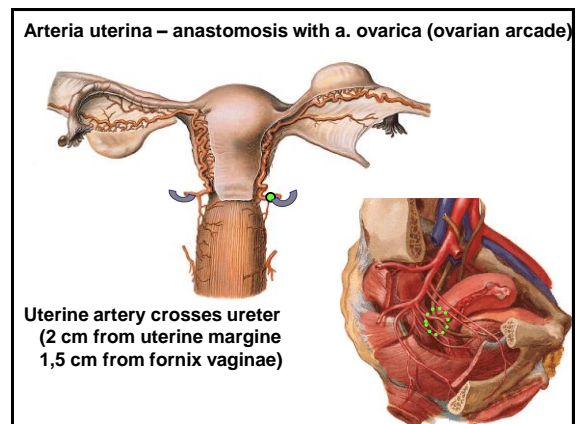
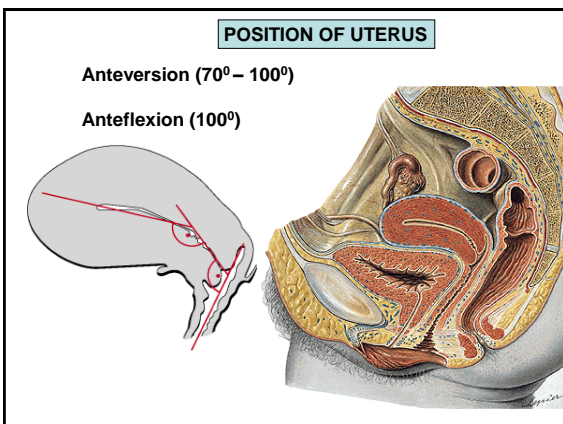
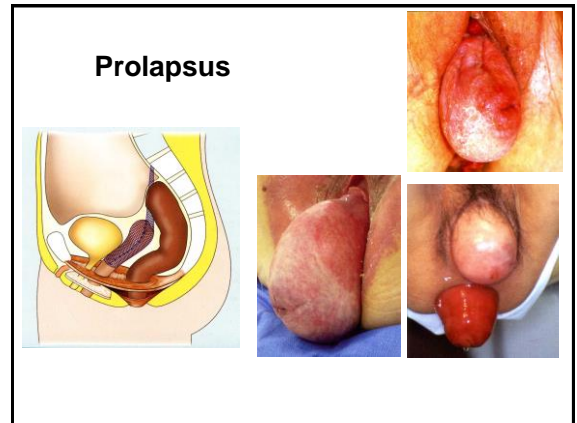
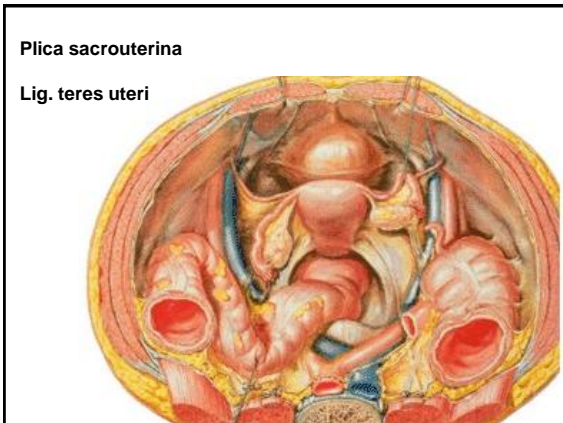
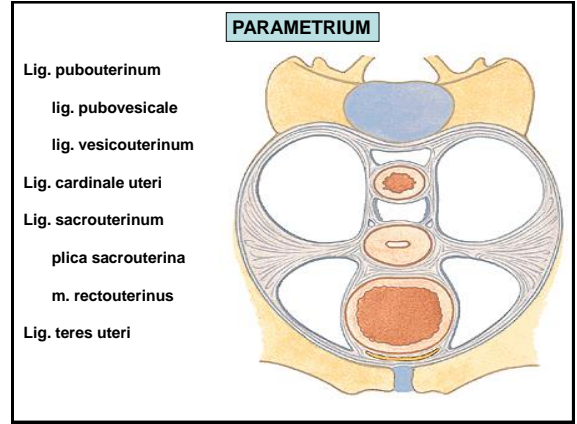
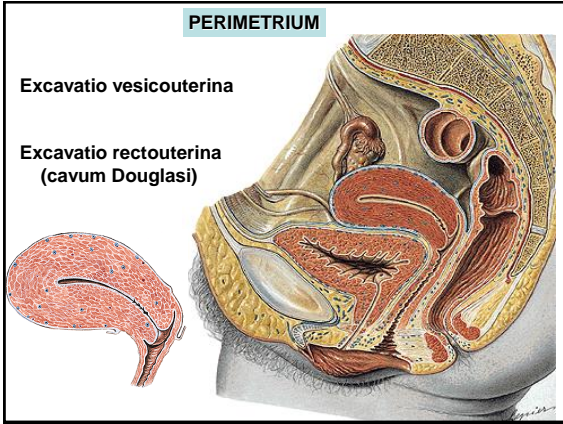


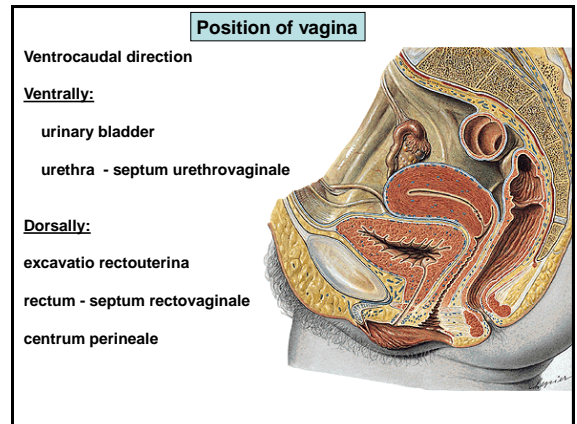
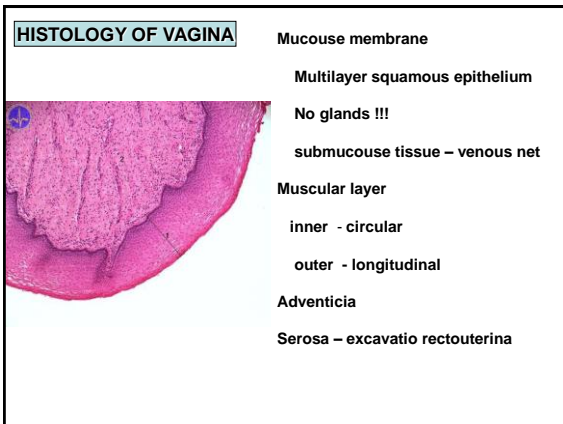
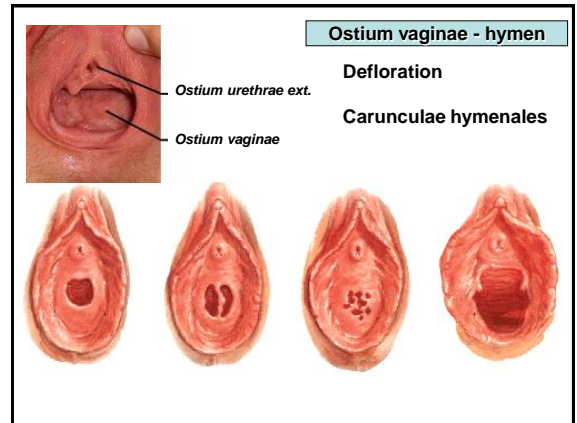
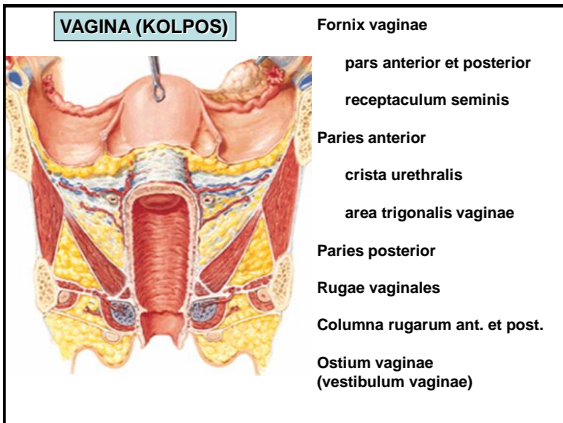
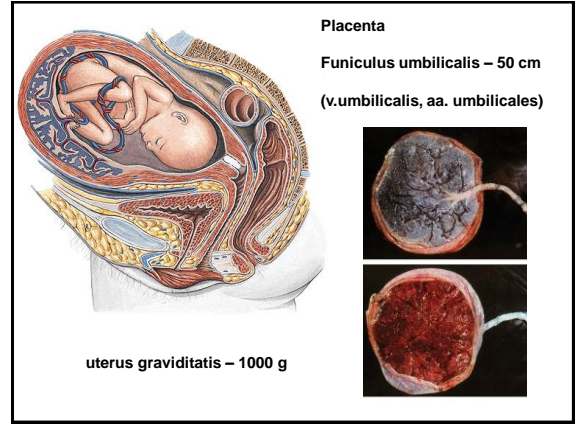
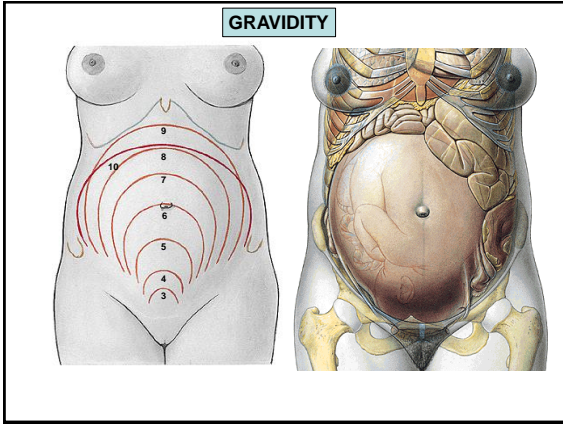


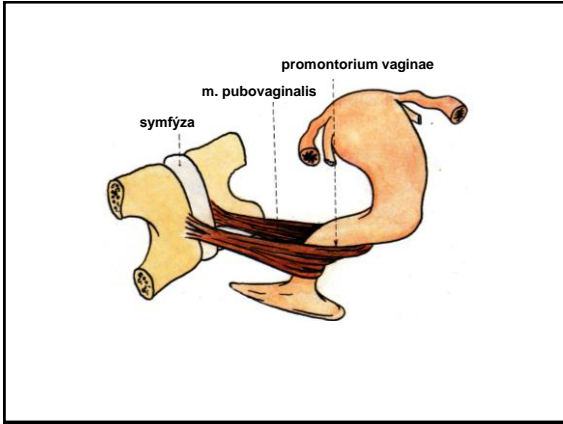












Organa genitalia feminina externa

- Labia majora pudendi
- Labia minora pudendi
- Mons pubis
- Vestibulum vaginae
- Clitoris
- Glandulae vestibulares
- Bulbi vestibuli

Labia majora pudendi

- Sulcus genitofemoralis
- Rima pudendi
- Commissura labiorum ant.
- Mons pubis
- Commissura labiorum post.
- Pubes
- Perineum (raphe perinei)

MONS PUBIS

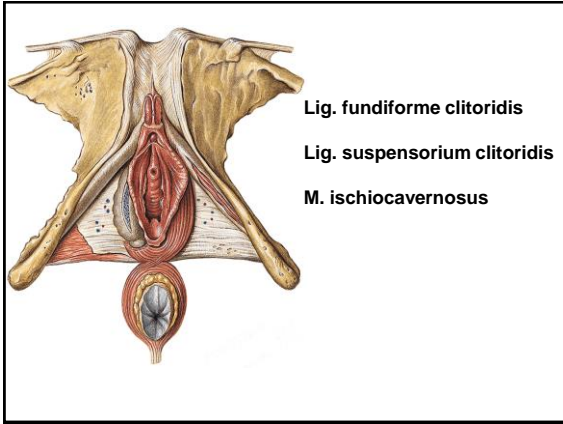
- Pubes
- Fatty tissue

Labia minora pudendi

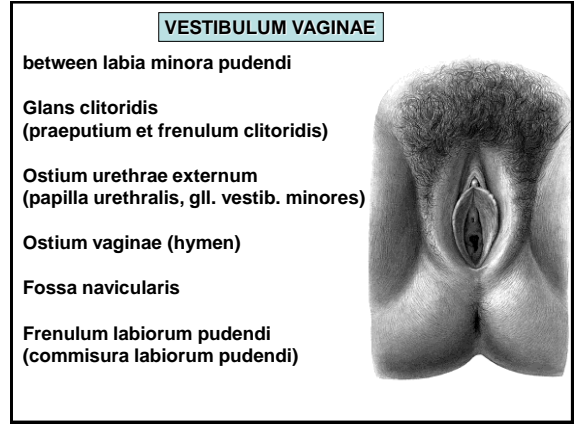
- Sulcus interlabialis
- Vestibulum vaginae
- Smegma
- Frenulum labiorum pudendi
- Fossa navicularis
- Praeputium clitoridis
- Frenulum clitoridis

CLITORIS

- Crura clitoridis (crista phallica)
- Corpus clitoridis
- Glans clitoridis
- Praeputium clitoridis
- Frenulum clitoridis
- Corpora cavernosa clitoridis

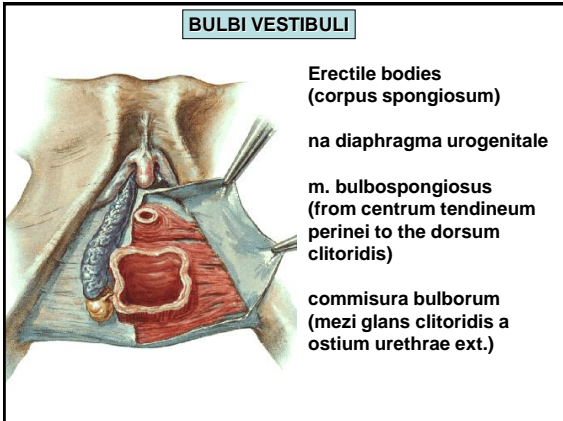


Lig. fundiforme clitoridis
Lig. suspensorium clitoridis
M. ischiocavernosus



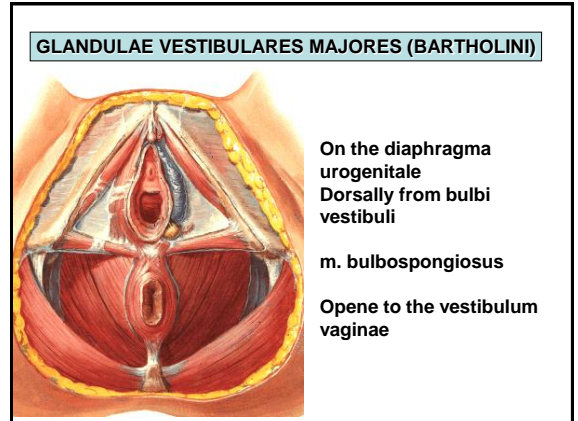
VESTIBULUM VAGINAE

between labia minora pudendi
Glans clitoridis
 (praeputium et frenulum clitoridis)
Ostium urethrae externum
 (papilla urethralis, gll. vestib. minores)
Ostium vaginae (hymen)
Fossa navicularis
Frenulum labiorum pudendi
 (commisura labiorum pudendi)



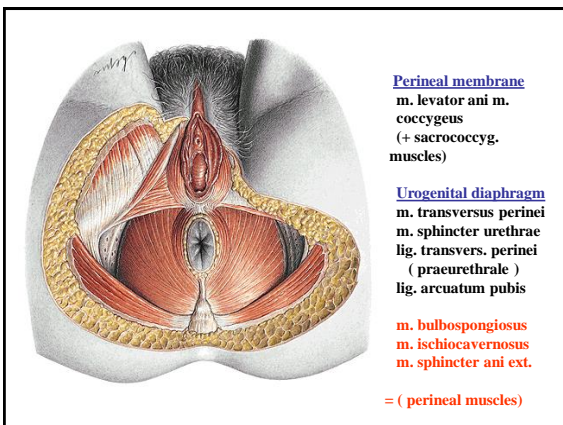
BULBI VESTIBULI

Erectile bodies
 (corpus spongiosum)
 na diaphragma urogenitale
m. bulbospongiosus
 (from centrum tendineum perinei to the dorsum clitoridis)
commisura bulborum
 (mezi glans clitoridis a ostium urethrae ext.)

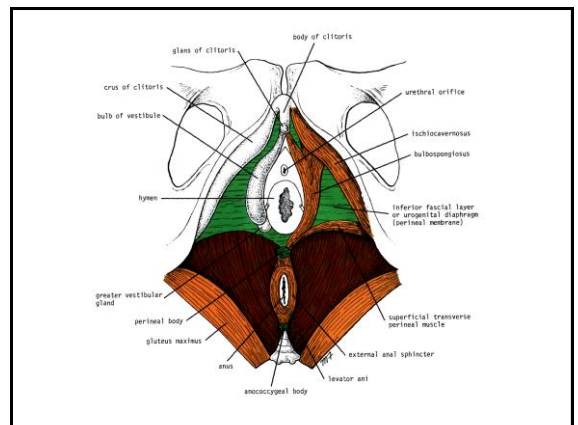


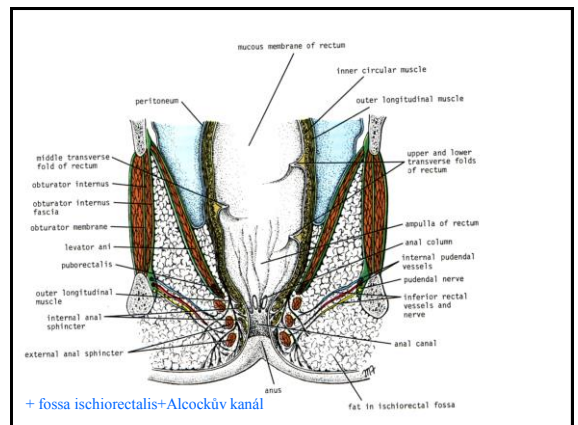
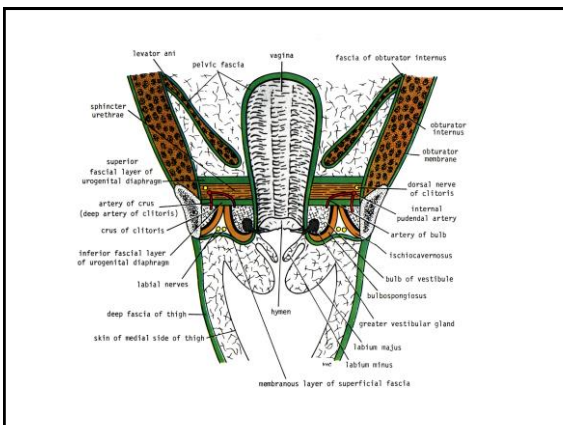
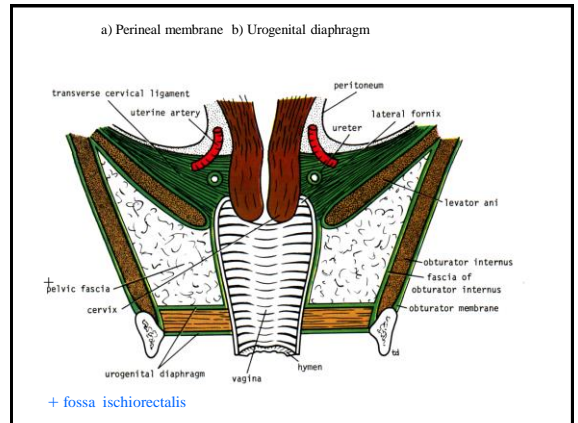
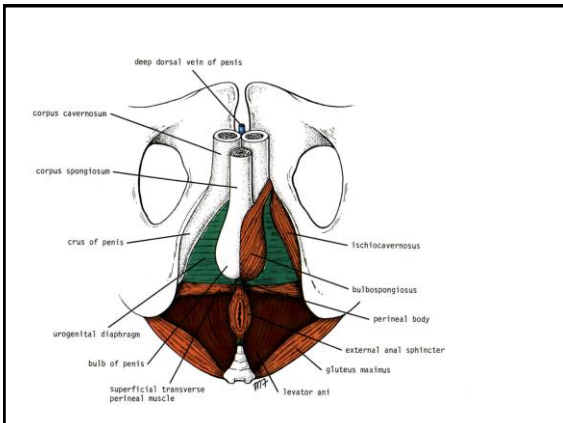
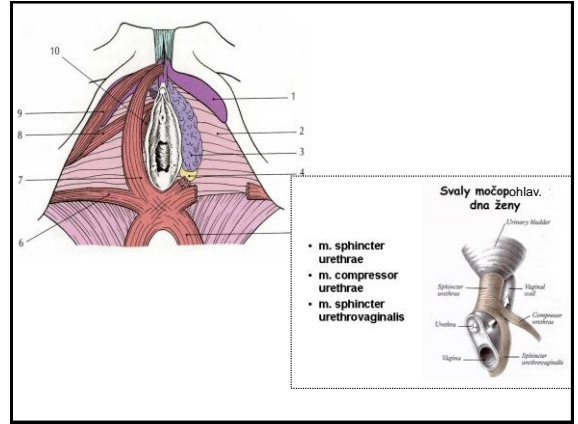
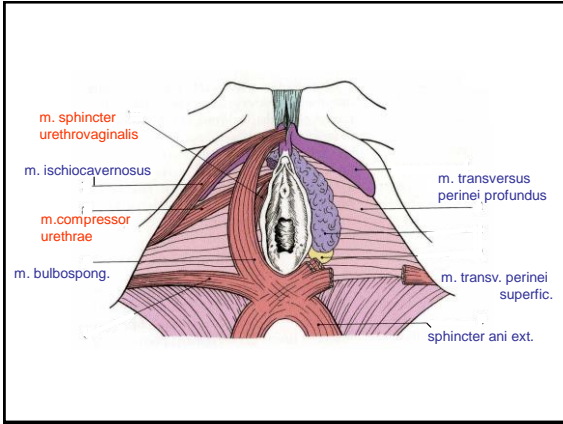
GLANDULAE VESTIBULARES MAJORES (BARTHOINI)

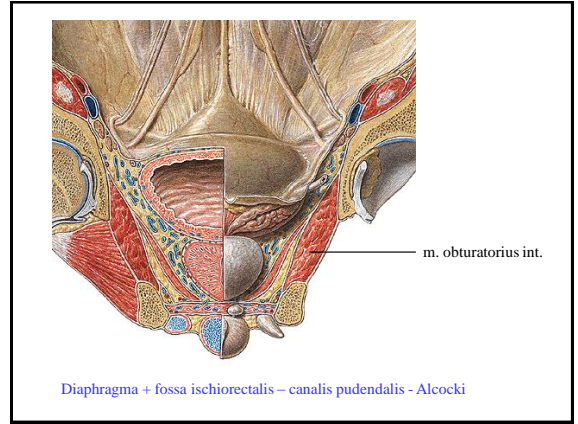
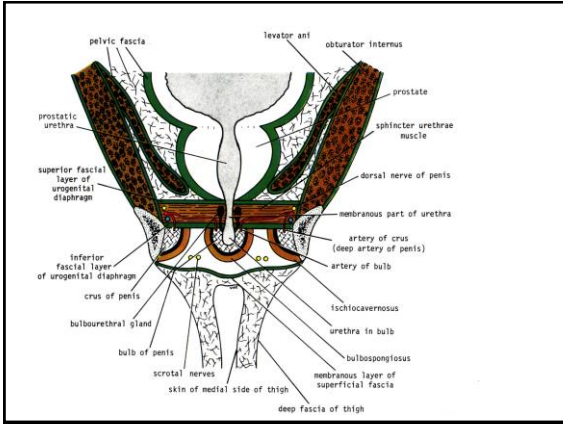
On the diaphragma urogenitale
 Dorsally from bulbi vestibuli
m. bulbospongiosus
Opene to the vestibulum vaginae



Perineal membrane
m. levator ani
m. coccygeus
 (+ sacrococcyg. muscles)
Urogenital diaphragm
m. transversus perinei
m. sphincter urethrae
lig. transvers. perinei
 (praourethrale)
lig. arcuatum pubis
m. bulbospongiosus
m. ischiocavernosus
m. sphincter ani ext.
 = (perineal muscles)







Diaphragma + fossa ischiorectalis – canalis pudendalis - Alcocki