

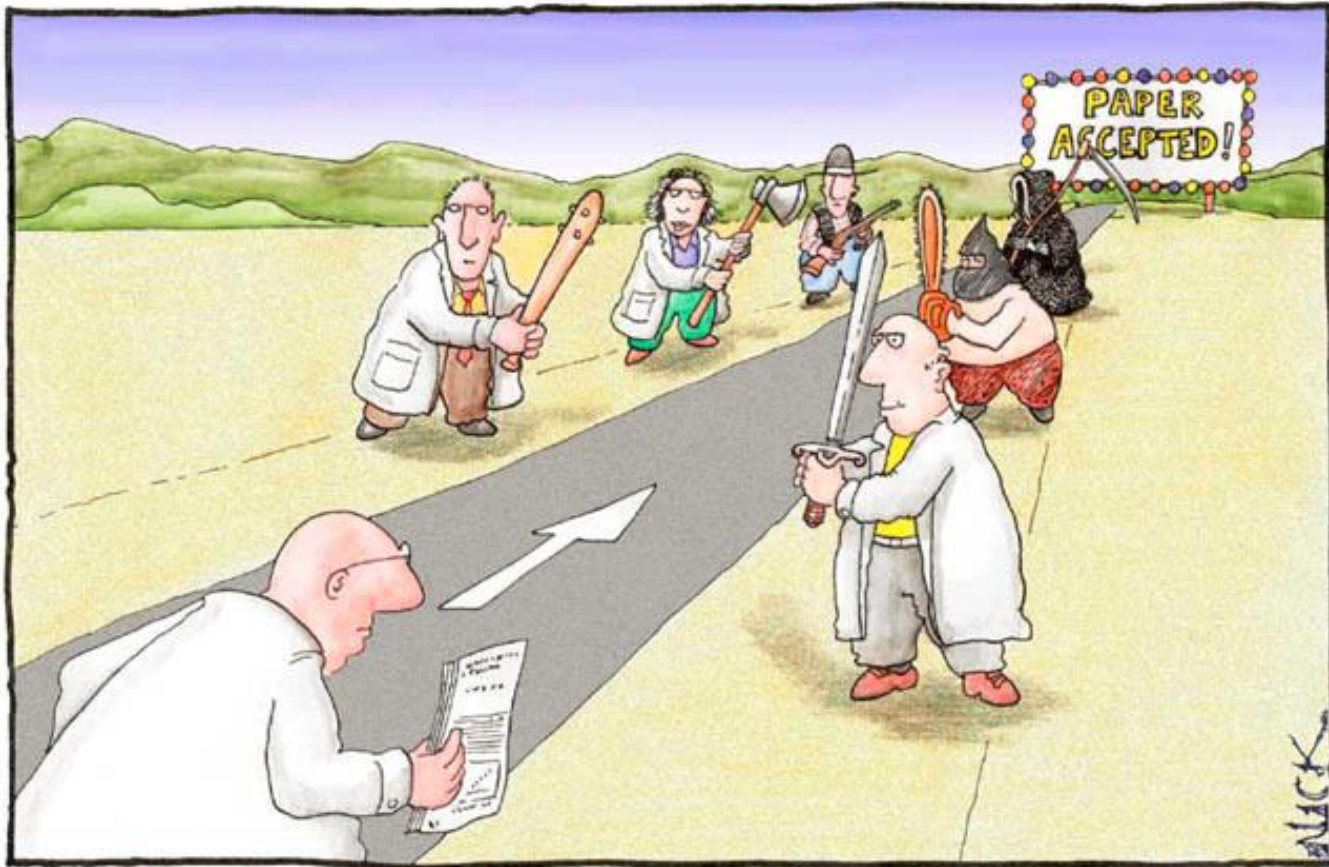


# Scholarly Publishing

## Assessment, Indicators & Visibility

Mgr. Michal Petr  
 Research Office  
 Masaryk university  
 Žerotínovo náměstí 9, 601 77 Brno  
 Tel. 549 49 5887  
[petr@rect.muni.cz](mailto:petr@rect.muni.cz)

# Publish or Perish dilemma



# Keynotes

## Self-promotion game

- **Make your research public and visible!** Create your own identifier, join the social networks, promote yourself

## Your role in the czech national assessment

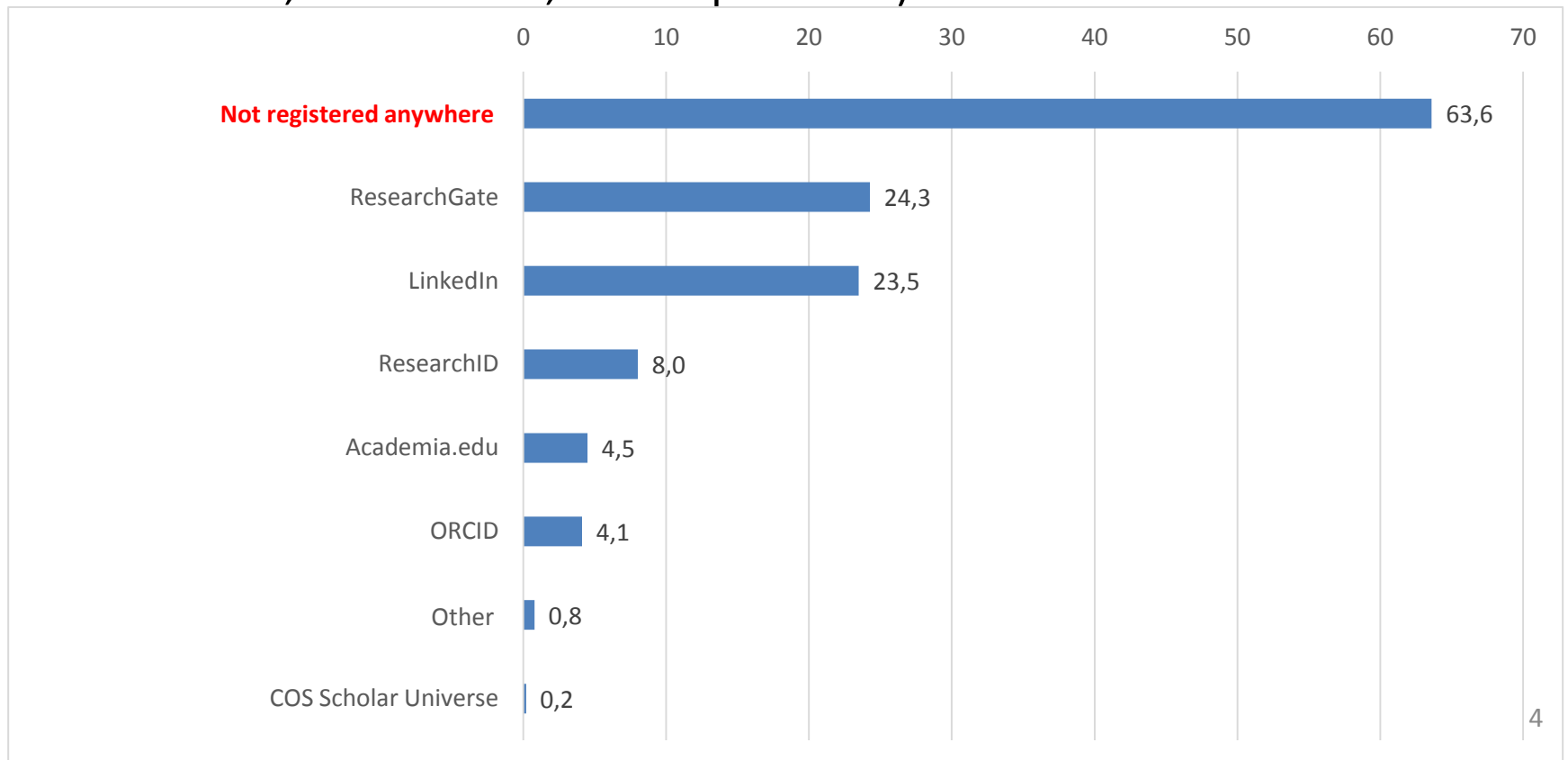
- **Responsibility** – have a complete and correct list of publications (Information System MU)

## Research Assessment (in a Nutshell)

- **Evaluated unit – you!** Make the metrics familiar

# Self-presentation at MU

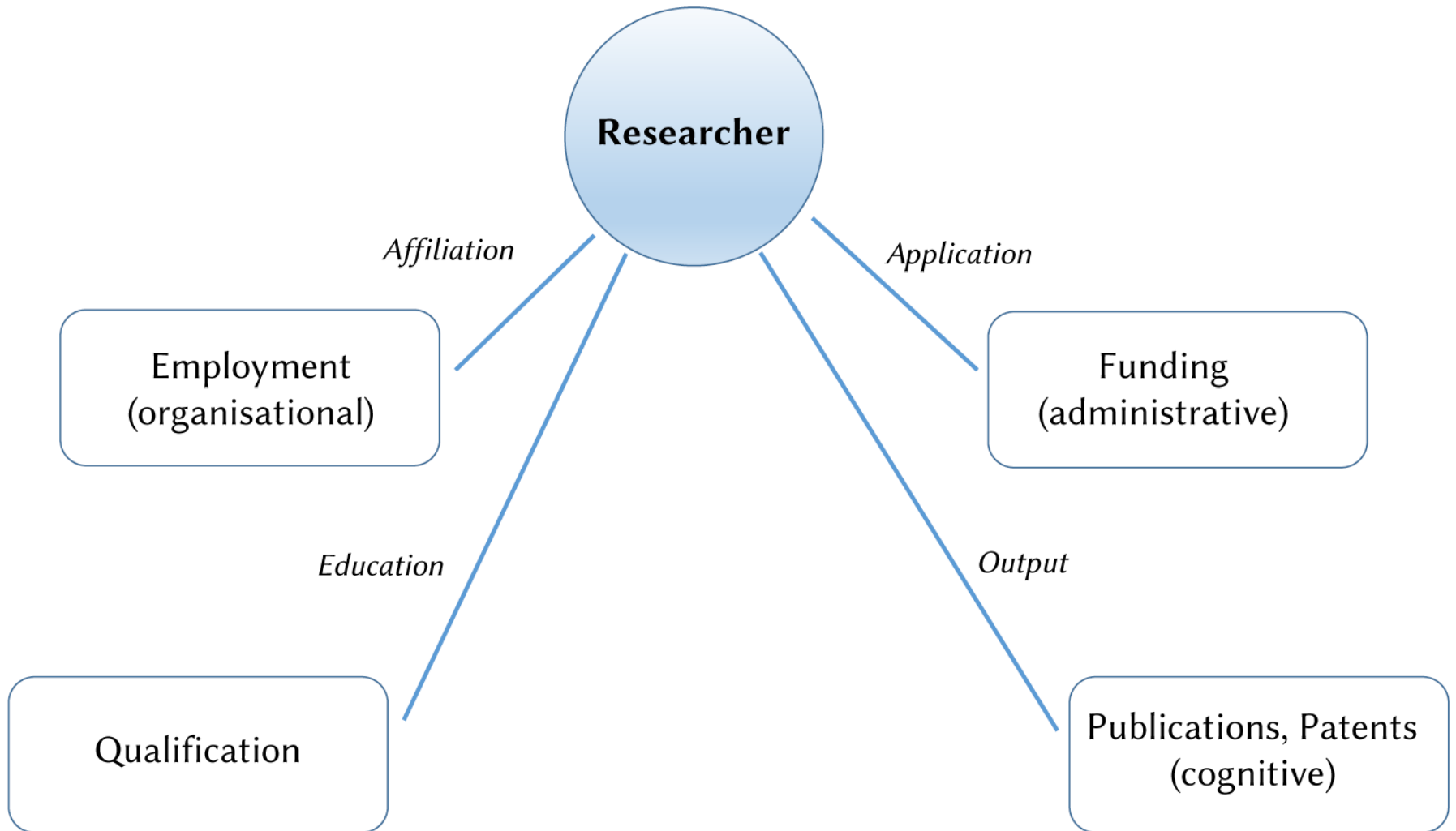
- ResearcherID profiles with affiliation to MU: ca 800 (including students)
- Self-presentation in the university campus (CEITEC, F. of Sport Studies, Medical F., F. of Science, 511 respondents):



# Why should I care about my online presentation?

- To make your research and teaching activities known
- To increase the chance of publications getting cited
- To increase the chance of new contacts for research cooperation
- To increase the chance of funding
- To correct attribution, names and affiliations
- To make sure that as much as possible is counted in research assessment

# Researcher's Ecosystem



# Problem...

	Variant 1	Variant 2	Variant 3
Umlaut	Glänzel	Glanzel	Glaenzel
Transliteration	王悦	Wang, Y	
Name particles	Van De Broek, I	Broek, I Vande / Broek, IV	Vandebroek, I
Initials	Wemans, Andre	Wemans, ADV	Wemans, A
Name change	Petre, Camelia	Stanciu, Camelia	Camelia, Stanciu
Database	VANRAAN, AFJ	VanRaan, AFJ	Van Raan, AFJ

Source: W. Glänzel, 2015

- Affiliation changes, missing affiliation
- Frequent names
- Common errors

# Personal Digital Identifiers

## Administrative burden? NO!

- Linking researchers and their work across databases
- Unambiguous identification in case of different name and affiliation variants
- History of publication profile independent on the actual affiliation/employer
- Statistical and bibliometric functions (cooperation, citation networks)
- Export functions (lists of publication); import functions (from citation managers)
- Are to be combined; data migration

Universal identifier does not exist yet



## Identifiers used specifically by the database

- Scopus Author Identifier
- vedidk (IS R&D&I)

Help: <http://vyzkum.rect.muni.cz/cs/evaluace-vyzkumu/vedecke-vystupy> (in Czech)



# ORCID (Open Researcher and Contributor ID)

- [Orcid.org](https://orcid.org)
- Profile with persistent digital identifier
- Today's best choice – widely supported by funding agencies and publishers
- Connection between databases, publications and other identifiers by your ORCID (ResearcherID, Scopus ID, ANDS, CrossRef, Metadata Search, Europe PubMed Central)

Michal Petr

Biography



ORCID ID

orcid.org/0000-0003-4067-6139

View Public Profile

Get a QR Code for your iD

Also known as:

Country:

Czech Republic

Keywords:

Websites:

Other IDs:

ResearcherID F-7757-2013

Education (1)

+ Add education | Sort

Masarykova Univerzita: Brno, CZ

Mgr.

SOURCE: Michal Petr

CREATED: 2014-06-26

Employment (1)

+ Add employment | Sort

Masarykova Univerzita: Brno, CZ

2012 to present | Manager for Research Evaluation (Rector's Office)

SOURCE: Michal Petr

CREATED: 2014-06-26

Funding (0)

+ Add funding | Sort

You haven't added any funding, [add some now](#)

Works (5)

+ Add works | Bulk edit | Sort

Opava železniční : 160 let od příjezdu prvního vlaku

2014 | book

ISBN: 978-80-905396-9-3

SOURCE: Michal Petr

CREATED: 2014-11-05

Preferred source

Obecní dům v Opavě

2011 | journal-article

SOURCE: ResearcherID

CREATED: 2014-06-26

Preferred source

Analýza pravěkých a raně historických nálezů z povrchových sběrů v okolí Břeclavi

2008 | journal-article

SOURCE: ResearcherID

CREATED: 2014-06-26

Preferred source

Geografická a archeologicko-prostorová data z Rakouska a možnosti jejich využití

2008 | journal-article

SOURCE: ResearcherID

CREATED: 2014-06-26

Preferred source

Železniční trať Opava – Trenčín jako doklad kolapsu soukromé výstavby železnic v 70. letech 19. století : Vlastivědný sborník Novojičínska

2008 | journal-article

ISSN: 12148032

# Usage of identifiers

## National consortium for ORCID set to improve UK research visibility and collaboration

The importance of this endeavor to research is also demonstrated by the increasing number of funders requesting ORCID identifiers on grant applications. The Wellcome Trust will make ORCID a mandatory requirement from August 2015, while both HEFCE and RCUK have shown high levels of support for the initiative.

In addition, the envisaged enhancements to systems and processes integrating ORCID should also play an important role in helping universities respond to funders' open access (OA) policies, for example as part of the next REF, supporting the move towards an open culture. Universities see ORCID as a crucial service, easing the workload of their researchers in ensuring compliance with OA mandates, making research more visible and discoverable, and creating opportunities for international and cross-disciplinary collaboration.

# RIV !

## ORCID

ORCID provides an international and unique digital identifier for researchers. Researchers at Dalarna University are encouraged to acquire ORCID. The Swedish Research Council's application and management system Prisma requires the use of ORCID.

## Italy Launches National ORCID Implementation

# ResearcherID

- [www.researcherid.com](http://www.researcherid.com)
- Profile developed by Thomson Reuters
- Feedback to Web of Science for grouping author name variants or corrections to affiliations
- Basic bibliometric functions
- Suitable for regular Web of Science users

**Petr, Michal** [Get A Badge](#) [ResearcherID](#) [Labs](#) Your labs page and badge show only your public data [Manage Profile](#) [Preview Public Version](#)

ResearcherID: F-7757-2013 **My Institutions** ([more details](#))

Other Names: **Primary Institution:** Masaryk University

E-mail: petr@rect.muni.cz **Sub-org./Dept:** Rector's Office

URL: <http://www.researcherid.com/rid/F-7757-2013> **Role:** Administrator

Subject: History **Joint Affiliation:**

Keywords: [Enter a Keyword](#) **Sub-org./Dept:**

ORCID: <http://orcid.org/0000-0003-4067-6139> **Role:**

[Exchange data with ORCID](#) **Past Institutions:**

Description: [Enter a Description](#)

My URLs: <http://is.muni.cz/osoba/65024>  
[www.michalpetr.cz](http://www.michalpetr.cz)  
<http://www.nedostavenatrat.estranky.cz>

**My Publications**

My Publications (5)

[View Publications](#) ▶

[Citation Metrics](#)

[Manage](#) | [Add](#)

---

ResearcherID labs

[Create A Badge](#)

[Collaboration Network](#)

[Citing Articles Network](#)

---

Publication Groups

Publication List 1 (0)

[View Publications](#)

[Citation Metrics](#)

[Manage](#) | [Add](#)

---

Publication List 2 (0)

[View Publications](#)

[Citation Metrics](#)

[Manage](#) | [Add](#)

---

[Help](#)

[Refer a Colleague](#)

[How to use these lists](#)

**My Publications: View** [Manage List](#) [Add Publications](#)

This list is to be used for publications that you have authored. You have the ability to make this list public or private. If public, then visitors of ResearcherID can see your scholarly output, and your list will be sent to the Web of Science ([click here for more information](#)). Click on the **Manage Profile** button at the top-right corner of the page and select the Publication Lists tab to change the privacy settings of your data.

5 publication(s) ◀◀ Page 1 of 1 Go ▶▶ Sort by: Publication Year Results per page: 10

1.	Title: Opava železniční : 160 let od příjezdu prvního vlaku Author(s): Petr, Michal; Borovcová, Alena	added 05-Nov-14
2.	Title: Obecní dům v Opavě Author(s): Petr, Michal	added 12-Nov-13
3.	Title: Analýza pravěkých a raně historických nálezů z povrchových sběrů v okolí Břeclavi Author(s): Petr, Michal	added 12-Nov-13
4.	Title: Geografická a archeologicko-prostorová data z Rakouska a možnosti jejich využití Author(s): Petr, Michal	added 12-Nov-13
5.	Title: Železniční trať Opava – Trenčín jako doklad kolapsu soukromé výstavby železnic v 70. letech 19. století Author(s): Petr, Michal Source: Vlastivědný sborník Novojičínska Pages: 140-152-140-152 Published: 2008	added 12-Nov-13

5 publication(s) ◀◀ Page 1 of 1 Go ▶▶ Sort by: Publication Year Results per page: 10

[Return to Search Page](#)

[Get A Badge](#)

[ResearcherID Labs](#)

ResearcherID: [143848013](#)

[My Institutions \(more details\)](#)

URL: <http://www.researcherid.com/rid/>

Primary Institution: Masaryk University

Sub-org/Dept:

Role: Faculty

## My Publications

My Publications (18)

[View Publications](#)

[Citation Metrics](#) ▶

ResearcherID labs

[Create A Badge](#)

[Collaboration Network](#)

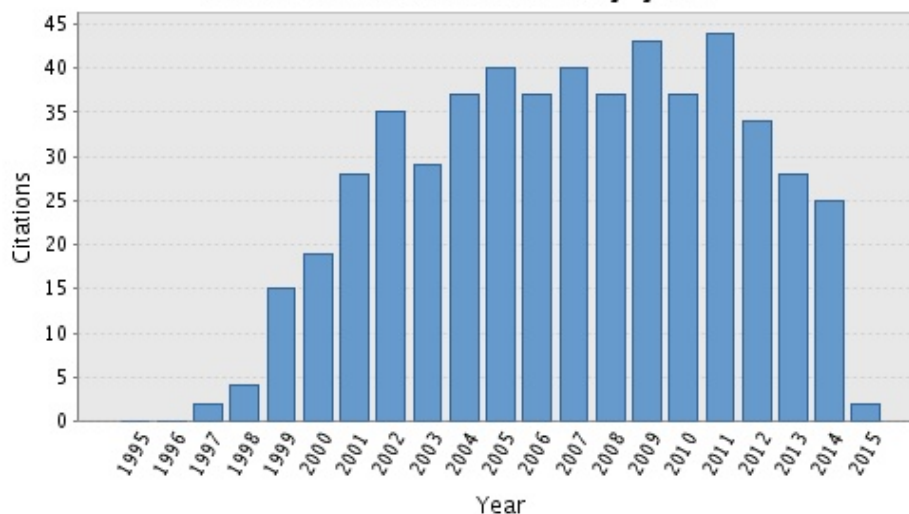
[Citing Articles Network](#)

## My Publications: Citation Metrics

This graph shows the number of times the articles on the publication list have been cited in each of the last 20 years.

Note: Only articles from Web of Science Core Collection with citation data are included in the calculations. [More information about these data.](#)

### Citation Distribution by year



Total Articles in Publication List: 18

Articles With Citation Data: 18

Sum of the Times Cited: 539

Average Citations per Article: 29.94

h-index: 12

Last Updated: 02/20/2015 07:11  
GMT

# Other possibilities of (self)- presentation

Personal Identifiers – ORCID, ResearcherID

Institutional Repository (Open Access in general)

## Social networks

- Increasing visibility
- Stay in touch with the community

# ResearchGate & Academia.edu

- Community organized around selected topics
- Social functions (following researchers, comments to paper drafts, discussions, questions around topics) – chance to start new collaborations
- Metrics and source for alternative metrics (# downloads, # views, ...)
- Job offers
- Publication list and sharing full texts (indexed by Google Scholar)

## ResearchGate

- [Researchgate.com](http://Researchgate.com)
- RG-score (total activity and interaction, plus publications)
- Impact points (number of publications weighed by journals they are published in)

## Academia.edu

- [Academia.edu](http://Academia.edu)
- You see the content without logging in
- Google Scholar, LinkedIn, Facebook, Google+, Twitter, Skype, ...





Ask a question to get answers from experts

Ask



Wolfgang Glänzel

4H

added a research

#### RESEARCH

### Multi-authorship and citation advantage, a mythical relationship

June 2015

Bart Thijs · Rodrigo Costas · Wolfgang Glänzel

Description: Scientometricians have devoted much time to the analysis of the (almost mythical) relation between collaboration and citation impact. Several authors found positive correlation between co...

[DOWNLOAD](#) [FOLLOW](#)

73 READS



Source



Martin Kvizda

20H

added full-texts to 6 publications

#### ARTICLE

### Managing the Czech Joint-Stock Companies – Failure of Economic Transformation

January 2006

Martin Kvizda · Jindriska Sedova

Abstract: The aim of this paper is to analyse whether legal rules, set up during the first years of the economic transition, could stimulate behaviour of economic subjects so that it would lead to ...



Source

Do your peers have these skills? ?



Johannes Sorz

Plant Environmental Stress Physiology

Endorse

Skip

[ASK ME LATER](#)

JOBS YOU MAY BE INTERESTED IN

[VIEW MORE](#)



Senior Project Manager  
European Vaccine Initiative

×



Research Manager  
Monash University (Australia)

×



Research Manager - Higher Educatio...  
The University of Sheffield

×

[Improve these suggestions](#)

[Get your job displayed here](#)

READS

5

CURRENT WEEK

0

LAST WEEK

0

PROFILE VIEWS

37

CURRENT WEEK

0

LAST WEEK

0

## Show your career's best

Use your profile overview page to present yourself and your research. Customizing your profile is the best way to show your peers what you've been working on, create exposure for your current projects, and start building your network.

6

PUBLICATIONS

5

Reads

0

Citations

View stats



### Add your unpublished work to your profile

Start gaining visibility and citations for unpublished work by adding research such as working papers, methods, and results to your profile.

[Upload unpublished work](#)

## FEATURED PUBLICATIONS



Source

### Technical Report: Podoby vnitřního hodnocení výzkumu na vybraných zahraničních institucích a pohled na ně očima výzkumníků

Michal Petr

3

Reads

0

Citations



### Book: Opava železniční : 160 let od příjezdu prvního vlaku

Michal Petr

0

Reads

0

Citations



### Article: Obecní dům v Opavě

Michal Petr

0

Reads

0

Citations



Masaryk University

Rector's office

Brno, Czech Republic , Czech Republic

## ABOUT

Add a short introduction about yourself or your current project.

## CONNECT WITH MORE COLLEAGUES



Add your other social network services to find more colleagues and share your achievements and updates.

[Connect now](#)

## SKILLS AND EXPERTISE (4)

1 19th Century History

1 Bibliometrics

Scientometrics

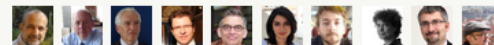
[Research Evaluation](#)

## Michal, are you skilled in these areas of research?

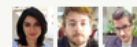
[Library Science](#)
[Scholarly Communication](#)
[Digital Libraries](#)
[Bibliographic Databases](#)
[Academic Librarianship](#)

[Learn more](#)
[Add skills to profile](#)

## 13 FOLLOWING

[View all](#)


## 3 FOLLOWERS

[View all](#)




New job added to History:

2 days

## Scholarship Program (PhD, Post-Doctoral, Visiting Scholars) - China Scholarship Council & Hebrew University of Jerusalem

Hebrew University of Jerusalem | 94 History, China...



New job added to History:

5 days

## Want to host a panel discussion to expose students to all sides of an issue? Check out the IHS On-Campus Faculty Partnership

Institute for Humane Studies | 23 History, Resea...



Juan Gorraiz added 5 papers:

1 mo

## Excellence, merit and research team size: a library and information science case study

BOOKMARK

DOWNLOAD

by Juan Gorraiz | 1

## Research Data Explored: Citations versus Altmetrics

BOOKMARK

DOWNLOAD

by Juan Gorraiz | 0

## On the temporal stability of Garfield's impact factor and its suitability to identify hot papers

BOOKMARK

DOWNLOAD

by Juan Gorraiz | 1

2 More



New paper added to History:

2 mos

## Envisioning a "Whitened" Brazil: Photography and Slavery at the World's Fairs, 1862–1889

### JOB BOARD

**Scholarship Program (PhD, Post-Doctoral, Visiting Scholars) - China Scholarship Council & Hebrew University of Jerusalem**

Hebrew University of Jerusalem

**Lecturer / Senior Lecturer - Materials Engineering**

Sheffield Hallam University

**Post-Doctoral Fellowship in the History and Philosophy of Science and Ideas at Tel Aviv University**

Tel Aviv University

ADVERTISE WITH US &gt;

### SUGGESTED SESSIONS

**A theory of the origins of non-racist 1 thinking**

Join | 25 | Jim Harries

### FIND FRIENDS & COLLEAGUES

Discover more new research by following people you know on Academia.edu.

GOOGLE CONNECT

# Suggestions to be more visible on the web

Suggestion 1 – Database Indexing

Suggestion 2 – Research Documentation (IS MU)

Suggestion 3 – Language (English)

Suggestion 4 – We recommend the use of a correctly updated personal identifiers such as ORCID (or ResearcherID)

Suggestion 5 – Self-marketing – communities (Academia, ResearchGate)

Suggestion 6 – Self-marketing – social media (LinkedIn, blog, website)

Suggestion 7 – Exploration of the use of „Google Scholar Citations“, especially for SSH

# Czech National Evaluation



# Czech Evaluation Methodology – principles

- Defines, which **outputs** are eligible for the Information System of R&D&I (RIV, not IS MU!!!) and how are they rewarded by **points**
- **Advantage:** consistent structure of outputs for many years

**The goal is to define the share of every research organization on the whole research funding budget**

- Assessment in 2016 (outputs **2010-2015**) influences funding in **2018**
- Evaluation methodology evolution:
  - 2010-2012 – strictly quantity-based counting; output = defined number of points
  - **2013-2016 – actual methodology, small share of panel/peer review**
  - From 2018 (expected) – **NERO – National Evaluation of Research Organizations**, international experiences, professional design, partly Performance-Based Research Funding System

# Evaluation Methodology

- **Methodology 2013-2016 has 3 „pillars“:**
  - Pillar I. – publications (metrics and peer review)
  - Pillar II. – excellence (peer review)
  - Pillar III. – patents, innovative outputs, policies

Type of outputs (in czech):

<http://www.vyzkum.cz/storage/att/2DB911A3086BC7D47A5B5F462DC9F041/Druh%20v%C3%BDsledku.pdf>

# Your role in the system

- Make familiar with the output types and their definitions
- Declare all your publication activities honestly
- Behave ethically:
  - Declare correct affiliation
- Don't cheat the system:
  - Don't produce fragmentary outputs
  - Don't put quantity before quality
- **Don't reduce your scientific attention to counting the points!**



# National Evaluation Systems



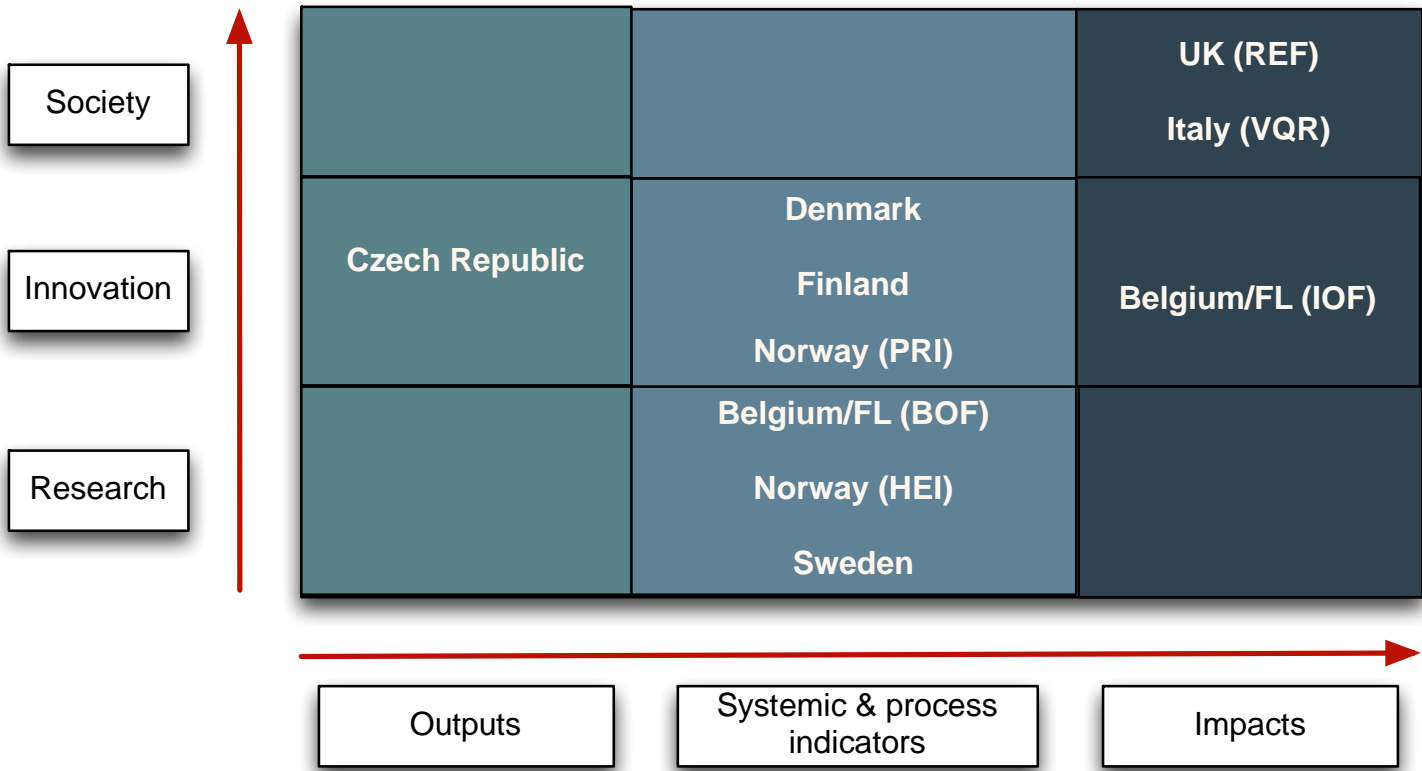
Research  
Excellence  
Framework 2014:  
The results

# Recent Trends (World)

- Increasing importance (public financing, complicated research systems)
- Reducing the costs
  - Usage of indicators
- Amphasis on profesionalization (agencies), relevance and reliability
- peer-review (or informed peer-review)
- Formative effect, low influence on core funding
- Impact-based indicators (societal too) x Czech Republic (outputs)

	Metrics-based	Peer review / panels
Austria - BMWF	✓	
Belgium (FI) - EWI	✓	✓
Czech Republic – RDI Council	✓	
Denmark - FI	✓	✓
Finland - MINEDU	✓	
France - AERES		
Italy - ANVUR	✓	✓
Netherlands – KNAW/NWO/VSNU		✓
Norway – RCN	✓	
Spain - CNEAI	✓	✓
Sweden - SRC	✓	
UK - HEFCE	✓	✓

	No influence on core funding		Influence on core funding		
	Not linked to funding decisions	Additional to the block grant	Less than 20%	Between 20% and 50%	More than 50%
Austria - BMWF			✓		
Belgium (Flanders) - EWI		✓	✓		
<b>Czech Republic</b>					✓
Denmark - Agency for Science, Technology and Innovation (FI)			✓		
Finland – Min. of Education & Culture (MINEDU)			✓		
France - AERES				✓	
Italy - ANVUR			✓		
Netherlands – KNAW/NWO/VSNU	✓				
Norway - RCN			✓		
Spain - CNEAI		✓			
Sweden - Vetenskapsrådet, SRC			✓		
UK - HEFCE					✓



# (Individual) Research Evaluation in a Nutshell

**Important strategic tool of R&D policies**

Who is afraid of the evaluation?

- Not a repression tool
- Valuable feedback & learning
- Scientists often dispute, that they are able to measure the quality of their own research alone...

Methods

- Qualitative (peer/panel review, ISAB)
- Quantitative (bibliometrics – indicators)

Makro

- ▼ global developments  
national R&D systems  
Policies  
Cross-sectional fields  
Research and grant  
programs

Meso

- ▼ academic fields  
universities, research  
institutes, funding agencies  
university  
institutes/departments  
target/status groups  
research groups  
individuals

Mikro

**Bibliometrics**

**Peer review**

# Bibliometrics



Illustration: David Parkins, [www.nature.com](http://www.nature.com)



# Bibliometrics

- Bibliometrics and scientometrics are sub-disciplines of information science

**Set of quantitative methods applied to the media of scientific communication (journals, books, ...)**

- Bibliometrics can provide tools to be applied to *research evaluation*, but is not designed to directly evaluate research performance
- Does not replace qualitative methods
- Can inform research strategies

# Bibliometrics in a Researcher's Career

- Habilitations
- Professorial appointment procedures
- Hiring procedures
- Professional promotion
- Self-promotion
- Grant application procedures
- Re-accreditation of PhD programs

# Benefits of bibliometrics for scientists

Planning the career and developing publication strategies (especially for young scientists)

Increasing the scientist's visibility (ResearcherID, ORCID, Google Citations Profile, etc.)

Mapping the research environment:

- Which are the key players (authors, institutions, countries, etc.) in my research field?
- What are the hot topics in my research field?
- How visible are my publications? How can I increase their visibility (publication strategies)?
- How big is the impact of my publications ?
- How many citations do I need to belong to the „best“ (excellence)?
- Who are my potential competitors/collaborators?
- How does my research output fare in comparison to my competitors/collaborators?
- ...

What can be measured:

- Coverage (databases; WoS/Scopus)
- Activity (trends)
- Visibility (JIF)
- Impact (Top Percentiles)
- Collaboration

# Databases and Sources

- **Bibliographic databases suitable for bibliometric analyses**
  - Thomson Reuters (Web of Science) and Elsevier (SCOPUS)
  - Subject Specific Databases: MathSciNet (mathematics), SciFinder – CAS (chemistry, biochemistry), PubMed (medicine), ADS – Astrophysics Data System (astrophysics).  
Patents – Derwent (součást Web of Science), EPO- PATSTAT, USPTO, DEPATISnet, WIPO
- **Google Scholar as a data source**
  - Alternative source for SSH
  - Extreme caution
  - In some fields high correlation with traditional databases

# Citation Index since 1960s – from books to online platform (Web of Science)



## CITATION INDEX

---

### Sample Display

Cited Item	VOL	PG	YR	Citing Item
ANSANELLI V				_____
87 AM J SURG	146	117		_____
BOLLER M				_____
AM J ROENTG	127	277	97	_____
Both of these items by ANSARA I were references used by Wagner C in his article from Metallurgical Transactions—B.				
ANSARA I				_____
91 MONATSHEFTE CHEMIE	102	1855		_____
SEMIN CHIM ETAT SOLI				_____
WAGNER C	7	485	97	_____
METALL T-B				_____
year of publication, journal abbreviation, volume & page				
ANSARA I				_____
88 AM J GASTROENTEROL	80	456		_____
ANDERSSO. A				_____
AMER SURG	42	173	97	_____
REDDI K K				_____
P NAS US	73	2308	97	_____
88 S MED J	61	858		_____
WAYNE KS				_____
AM R RESP D	114	15	97	_____
Both these authors cited ANSARI AH's paper in their articles in Obstetrics and Gynecology				
ANSARI AH				_____
89 AM J OBSTET GYNEC	103	511		_____
PENTTILA IM				_____
HORMONE MET	8	299	97	R
90 FERTILITY STERILITY	21	373		_____
STRUVE FA				_____
OBSTET GYN	33	741	97	_____
YOUNG JK				_____
OBSTET GYN	3	322	97	_____
undated item				
ANSEAU MR				_____
**IN PRESS				_____
CANTOR B				_____
ACT METALL	24	845	97	_____
SOURCE INDEX ENTRY				
ANSELIN F				_____
83 CR HEBDOMAD SE ACAD	256	2616		_____
PEZAT M				_____
J SOL ST CH	18	381	97	_____
20				_____
85 T AM NUCL SOC				_____
BLANCHAR P				_____
T AM NUCL S	23	151	97	M
Source Index entry for article by Pezat M which makes reference to the 1983 paper by Anselin F.				
PEZAT M				_____
♦ TANGUY B				_____
VLASSE M				_____
PORTIER J				_____
HAGENMUL. P—(FR)				_____
RARE EARTH NITRIDE FLUORIDES				_____
J SOL ST CH	18(4):381-390		97	A4884 26R
Codes Indicate Type of Source Item:				
Blank	articles, reports, technical papers, etc.			
B	book reviews (from The Scientist®, Science or Nature)			
C	corrections, errata, etc.			
E	editorial material			
I	items about individuals (tributes, obituaries, etc.)			
L	letters, communications, etc.			
M	abstracts from meetings			
NI	news items			
R	reviews			
RP	reprints			
W	computer reviews (hardware reviews, software reviews, database reviews)			
A complete description of each source item code appears in the SCI Codes & Conventions: Citation Index section of the instructional material.				
ISI® Journal Accession Number				

## PATENT CITATION INDEX

---

reference patent number	reference application or reissue
3 410 817	_____
1988 McCLELLAN JM	APPL US
FRISCH KC	POLYM-PLAST R
4 302 592	4 1 97
1997 TIEMAN CH	_____
HUANG J	US
J AGR FOOD	35 368 97
J HETERO CH	24 1 97
reference country	



Welcome to the new Web of Science! View a brief tutorial.

## Basic Search

Example: oil spill\* mediterranean

+ Add Another Field | Reset Form

- Topic
- Title
- Author
- Author Identifiers
- Group Author
- Editor
- Publication Name
- DOI
- Year Published

Search

Click here for tips to improve your search.

### TIMESPAN

All years

From 1945 to 2016

MORE SETTINGS

- Customer Feedback & Support
- Additional Resources
- What's New in Web of Science?
- My Web of Science

Join the webinar on February 18 – Why Scopus content is relevant to you – register now.

[Document search](#) | [Author search](#) | [Affiliation search](#) | [Advanced search](#)

[Browse Sources](#) [Compare journals](#)

Search for... *Eg., "heart attack" AND stress*

Article Title, Abstract, Keywords



+ Add search field

Limit to:

#### Date Range (inclusive)

Published  to

Added to Scopus in the last  days

#### Subject Areas

Life Sciences (> 4,300 titles . .)

Health Sciences (> 6,800 titles . 100% Medline coverage)

#### Document Type

Physical Sciences (> 7,200 titles . .)

Social Sciences & Humanities (> 5,300 titles . .)



Learn more about how to Improve Scopus



Stay up-to-date on Scopus. Follow @Scopus on Twitter



Watch tutorials and learn how to make Scopus work for you



Get citation alerts pushed straight to your inbox



Get started with Scopus APIs

#### About Scopus

[What is Scopus](#)

[Content coverage](#)

[Scopus Blog](#)

[Scopus API](#)

#### Language

[日本語に切り替える](#)

[切换到简体中文](#)

[切换到繁體中文](#)

#### Customer Service

[Help and Contact](#)

[Live Chat](#)

# Databases

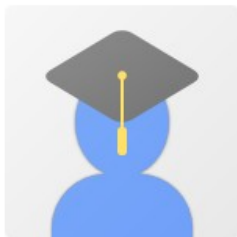
- Web of Science, SCOPUS
- Importance for national assessment
- Quality standard (journal selection process)
- Responsible peer review process
- Visibility
- Easy citations tracking

WoS (traditional, but less sources indexed)

X

SCOPUS (newer, more „european“, but not so strict selection process)





Michal Petr

Masaryk University

history, railway history, sports

E-mailová adresa ověřena na: rect.muni.cz

Můj profil je veřejný

Upravit

Sledovat

Změnit fotografii

Google Scholar



Citační indexy	Všechny	Od 2010
Citace	3	3
h-index	1	1
i10-index	0	0



**Spoluautoři** [Upravit...](#)

Žádní spoluautoři

<input type="checkbox"/>	Název	Přidat	Další	1-6	Citace	Rok
<input type="checkbox"/>	<a href="#">Geografická a archeologicko-prostorová data z Rakouska a možnosti jejich využití</a>				2	2008
	M Petr Masarykova univerzita Brno; Archeologický ústav AVČR, Praha, wi ...					
<input type="checkbox"/>	<a href="#">Analýza pravěkých a raně historických nálezů z povrchových sběrů v okolí Břeclavi</a>				1	2008
	M Petr Masarykova univerzita Brno; Archeologický ústav AVČR, Praha, wi ...					
<input type="checkbox"/>	<a href="#">Opava železniční : 160 let od příjezdu prvního vlaku</a>					2014
	M Petr, A Borovcová Opavská kulturní organizace					
<input type="checkbox"/>	<a href="#">Obecní dům v Opavě</a>					2011
	M Petr Matice Slezská					
<input type="checkbox"/>	<a href="#">Železniční trať Opava–Trenčín jako doklad kolapsu soukromé výstavby železnic v 70. letech 19. století</a>					2008
	M Petr					
<input type="checkbox"/>	<a href="#">Úspěchy a neúspěchy výstavby železnic v Rakouském Slezsku v 70. letech 19. století</a>					2007
	M Petr Masarykova univerzita					

Data a počty citací jsou odhady určené automaticky počítačovým programem.

[Nápověda](#)

[Ochrana soukromí](#)

[Smluvní podmínky](#)

[Poskytnout zpětnou vazbu](#)

[Moje citace](#)

Author impact analysis - Perform a citation analysis for one or more authors

- Author impact
- Journal impact
- General citations
- Multi-query center
- Web browser
- Check for updates
- Help contents
- What's new?
- 2-Minute intro
- PoP FAQ
- PoP web site
- PoP book

Author's name:  Lookup

Exclude these names:

Year of publication between:  and:

Data source:

Lookup  
Lookup Direct  
Clear All  
Help

**Results**

Papers: 5    Papers/author: 4.50    h-index: 1  
 Citations: 3    Cites/year: 0.43    g-index: 1  
 Years: 7    Cites/auth/year: 0.42    hc-index: 1  
 Cites/paper: 0.60    hI,annual: 0.14    hI,norm: 1

Michal Petr from 2008 to 2014: all  
 Query date: 2015-02-19  
 Papers: 5  
 Citations: 3  
 Years: 7

Copy results  
Copy >  
Check all  
Check selection  
Uncheck all  
Uncheck 0 cites  
Uncheck selection  
Help

Cites	Per year	Rank	Authors	Title	Year	Publication	Publisher	Type
0	0.00	966	P Michal	Vývoj a trendy v oblasti fotoiniciátorů	2013		dspace.upce.cz	CITATION
0	0.00	967	M Petr	Princip ne bis in idem v prostoru svo...	2008		muni.cz	CITATION
0	0.00	968	M Petr, Z Tonarová	Soutěžní právo, dominance a regula...	2010		muni.cz	CITATION
0	0.00	969	M Petr, A Borovcová	Opava železniční: 160 let od příjezdu...	2014		muni.cz	CITATION
0	0.00	970	M Petr	Podniky, koncerny, dceřiné společno...	2013		muni.cz	CITATION
0	0.00	971	MM Petr	Tajemství dechu				CITATION
0	0.00	972	M Petr, M Růžičková	Test citace 2	2012		muni.cz	
0	0.00	973	P Michal	Genderová analýza ve vybrané nezi...	2009		is.muni.cz	PDF
0	0.00	974	M Petr, M Růžičkov...	Test citace	2013		Výzkumný ústav pivovarský ...	CITATION
0	0.00	975	M Petr	Obecní dům v Opavě	2011		muni.cz	CITATION
0	0.00	976	M Petr	Paleosemologické vyhodnocení průz...	2010	Brno: Ústav fyziky Země, Př...		CITATION
0	0.00	977	M Petr	Bílá kniha o náhradě škody způsoben...	2008		muni.cz	CITATION
0	0.00	978	..., J Čermák, Z Loe...	Cyber Law in the Czech Republic	2012		muni.cz	CITATION
0	0.00	979	F Černocho, B Dančá...	Nekonvenční zdroje zemního plynu-...	2012		muni.cz	
0	0.00	980	M Růžička, P Sojka	Redakční systém odborného časopis...	2011		muni.cz	
0	0.00	981	J Holý, J Flaišman, ...	Kronika a glosy	2011	Česká literatura	ceool.com	
0	0.00	982	P Mrkvývka, P Jánoší...	Finanční a daňové právo	2009		muni.cz	CITATION
0	0.00	983	L Vitova, T Kyndov...	Another Czech literature (?)	2011		... NA FLORENCI 3, PP 14, P...	CITATION
0	0.00	984	R Mička, P Cimala, P...	RECENZE	2010	Studia theologica		CITATION
0	0.00	985	M Petr	DROGY A MLADISTVÍ	2009		dspace.tul.cz	
0	0.00	986	P Černek, M Břejch...	A Comparison of Power Quality Cont...	2012	Acta Polytechnica	ojs.cvut.cz	
0	0.00	987	M Burger, B Ondráč...	Farmakoeconomické hodnocení (CEA...	2013		muni.cz	
0	0.00	988	R Kearney, T McDo...	Рабочая группа Европейского об...	2010			CITATION
0	0.00	989	P Kuchtová, B Šerá...	REAKCE OSIVA MÁKU SETÉHO NA O...		OSIVO A ...	krv.agrobiologie.cz	PDF
0	0.00	990	P Sojka, M Růžička	TeXové technologie pro digitální mat...	2009		muni.cz	
0	0.00	991	M Lehnert, R Psotta...	SEASONAL VARIATION IN ISOKINET...	2014	Kineziologija	hrcak.srce.hr	
0	0.00	992	J GOLONKA, Z VAŠÍ...	Artykuły wprowadzające i objaśnieni...		journals.bg.agh.edu.pl		
0	0.00	993	P Lichý, M Cagala	Studium filtrace taveniny sledováním...	2009		dspace.vsb.cz	CITATION
0	0.00	994	F Avilés, J Bartunek...	Deputy Editors		actavia.e-coretvasa.cz		
0	0.00	995	..., O Májek, J Mužk...	Nový informační systém a datový au...	2009		muni.cz	CITATION
0	0.00	996	P Sojka, M Bulant	SCO 2008, Sharable Content Object...	2008		muni.cz	CITATION
0	0.00	997	L Kyndl, P Mrkvývka, ...	Metoda a ekonomické limity regulace...	2013		muni.cz	BOOK
0	0.00	998	J Zatloukal, P Raus...	Osophagographie, Thorakotomie, O...	2009	Kleintier-Praxis		CITATION
0	0.00	999	S Bengtson, X Hou, ...	Thematic issue: Biomechanics and Pa...		app.pan.pl		
0	0.00	1000	M Petr	Železniční trať Opava-Trenčín jako d...	2008		muni.cz	CITATION
1	0.17	517	M Petr	Odpovědnost v soutěžním právu	2009		muni.cz	CITATION
1	1.00	518	M Petr, L Boerboom...	An uncertainty assessment framewo...	2014	Forest Policy and Economics	Elsevier	
1	0.17	674	..., S Michal, S Vitez...	Does Cold Plasma Affect Breaking D...	2009	Plasma Science and ...	adsabs.harvard.edu	
1	1.00	675	G Ad, A Kurco, B...	Search for Hinge Bond Pair Product...	2014		cdc.cern.ch	

# Indicators – example

**There is no single indicator to express all!**

## **Journal evaluation (not individuals!!!)**

- Journal Impact Factor (JIF) + Quartile Rank

## **Article-Level Indicators (impact)**

- Citation Impact – citations per publication (in a dataset)
- Category Normalized Citation Impact – ratio of actual citations to expected citations rate, normalized to the field, year and type (1 = world average)
- Percentiles
  
- H-index

# Journal Impact Factor (Thomson Reuters)

- Originally designed for better selection of subscribed journals

Measures **journal influence** (according to the calculation), not quality or impact of research published in!

**IF is calculated by dividing the number of citations in the JCR year by the total number of articles published in the two previous years.**

- Often used as a proxy for the relative importance of a journal within its field; journals with higher IF are considered to be more important than those with lower ones

## **Limitations:**

- 80/20 rule – high IF doesn't directly lead to high citations count of the article
- Calculation can be skewed by:
  - Review articles
  - Small number of highly cited articles
  - Agreements between journals (mutual citations)
- Very subject specific
- ...

# H-index

- H-index measures productivity and impact
- The value of  $h$  is equal to the number of papers ( $N$ ) in the list that have  $N$  or more citations
- For example, an h-index of 2 indicates that in the dataset, 2 papers were cited at least 2 times each
- Different value, while excerpted from different sources

## Advantages

- Cannot be influenced by small number of extremely highly cited article or big number of zero-cited articles
- In terms of trend data can identify consistently excellent research in the field
- Can identify „rising stars“ in the field

## Limitations

- Subject-specific, cannot be compared between research fields
- Rises with the age of the researcher; never falls down

## Colleague A

- 1 article, year 2012, JIF **12,511**
- H-index 1
- 
- 
- 

## Colleague B

- 1 article, year 2012, JIF **4,842**
- H-index 1
- 
- 
- 
-

## Colleague A

- 1 article, year 2012, JIF **12,511**
- H-index 1
- Multidisciplinary
- Citation count: **9**
- Multi-authored: 55 authors

## Colleague B

- 1 article, year 2012, JIF **4,842**
- H-index 1
- Specialized journal in category, locally relevant
- Citation count: **30**
- Bilateral collaboration with leading university
- Article is shared via Twitter comments

# Perspectives of bibliometrics

- Appropriate indicators for the assessments of the social sciences, humanities and arts
- Analysis of web visibility and Weblinks (webometrics)
- „Usage“ statistics (e.g., download, access, views, visits)
- „Altmetrics“ (alternative metrics), e.g., based on discussion in social media (Mendeley, CiteULike, Twitter and others)
- Social networks and tools (ResearchGate, academia.edu etc.)



# Conclusions

- Use the bibliometric services for shaping your publication strategy
- Use alternative metrics as a measures of impact (social networks)
- You shouldn't be evaluated by one indicator
- Quality of research cannot be measured by Journal Impact Factor

# Useful weblinks

- [www.vyzkum.cz](http://www.vyzkum.cz)
- [www.isvav.cz](http://www.isvav.cz)
- [www.webofscience.com](http://www.webofscience.com)
- [www.scopus.com](http://www.scopus.com)
- [www.orcid.org](http://www.orcid.org)
- [www.researcherID.com](http://www.researcherID.com)
- <http://www.harzing.com/pop.htm> (Publish or Perish)
- <http://www.ascb.org/dora/>
- <http://vyzkum.rect.muni.cz/cs/evaluace-vyzkumu>

*That's all Folks!*

# Error in the Assessment Design...

