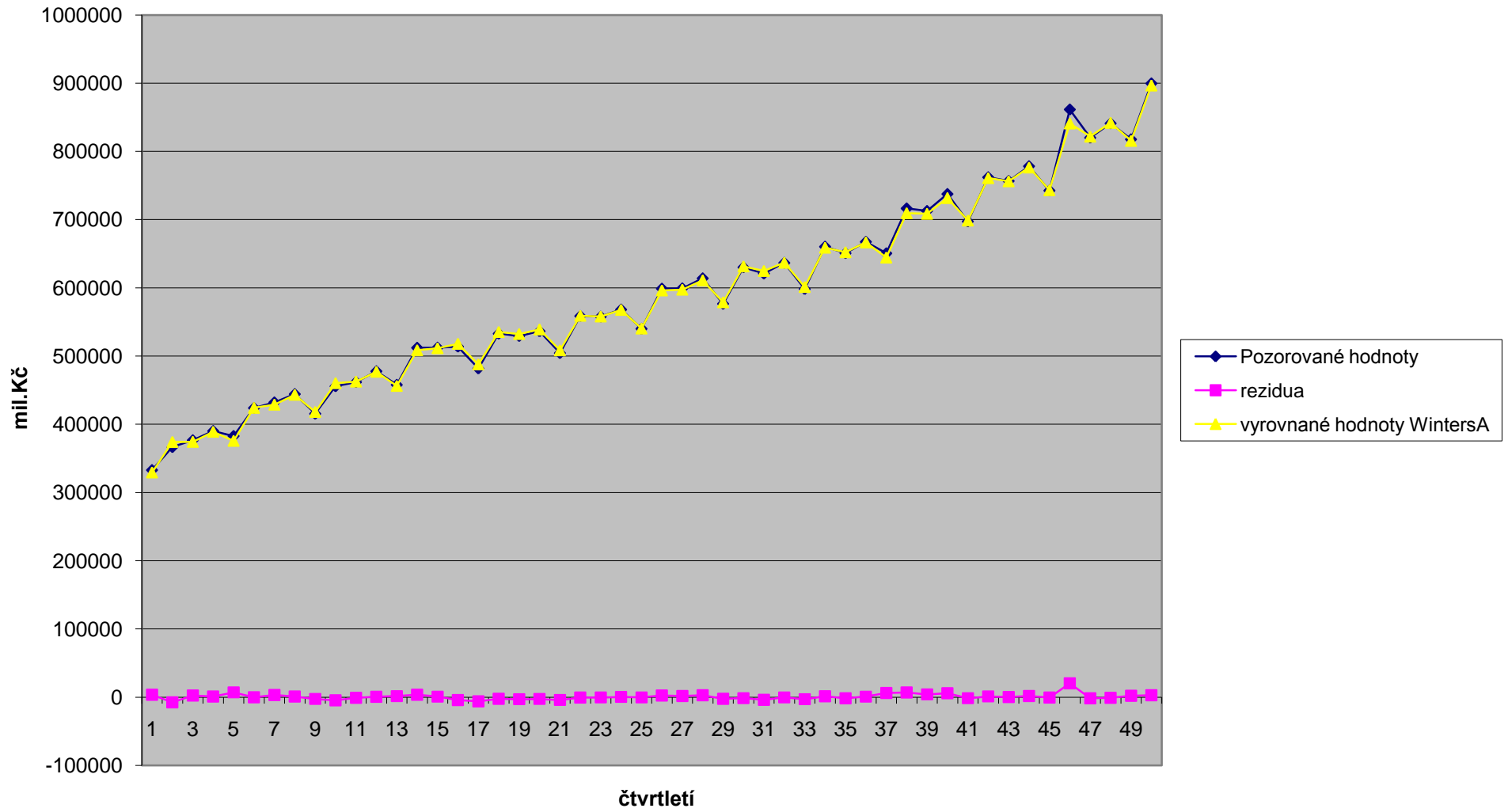
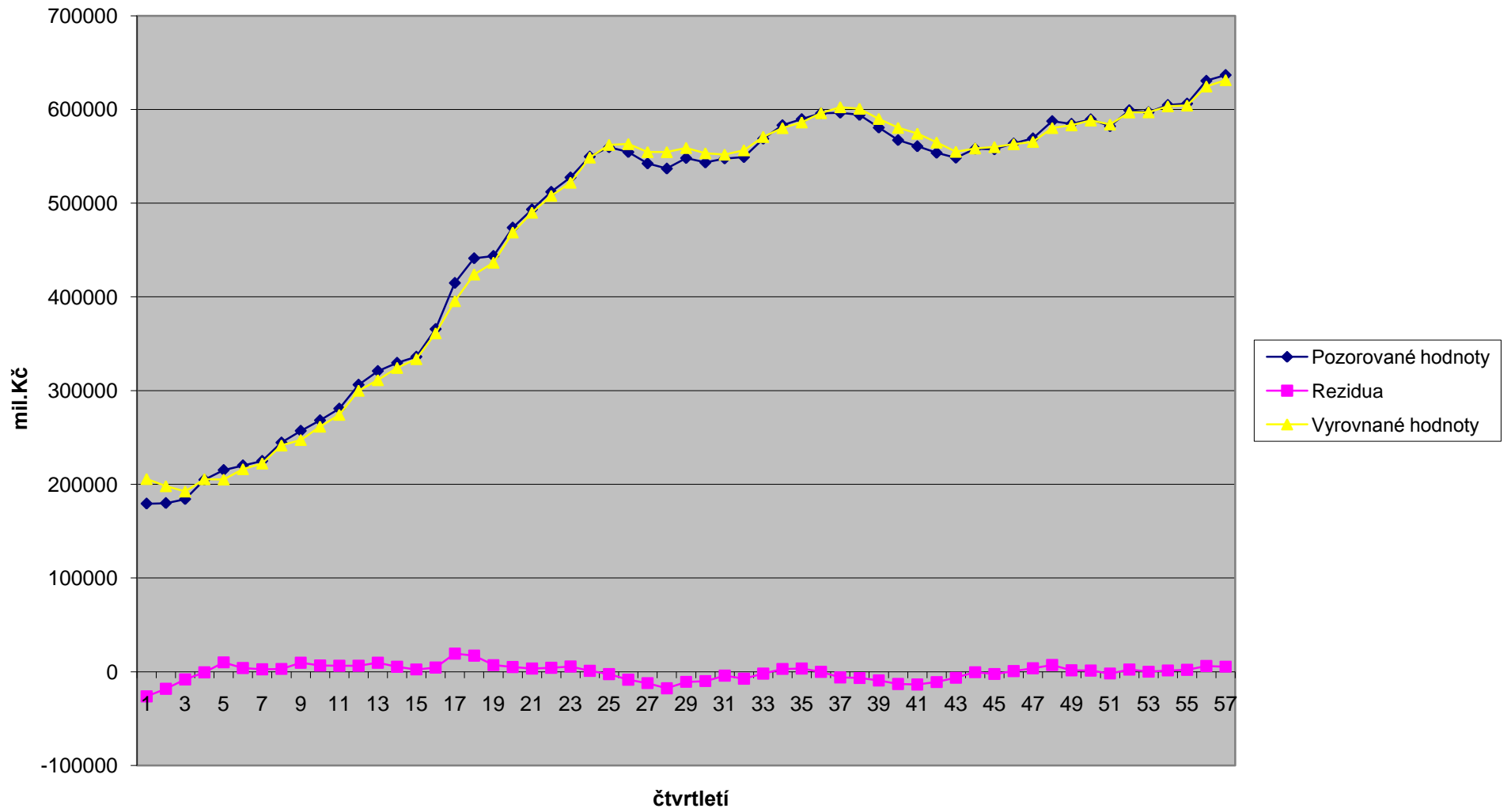


Wintersova metoda A - C943: HDP ČR



### Wintersova metoda A - C913: Termínované vklady



poč.hodn.	alfa =	0.4	gama =	0.1	delta=	0.4
-----------	--------	-----	--------	-----	--------	-----

počáteční hodnoty parametrů jsou převzaty z regresního výpočtu

L0	T0	0
244622	7864.47	2179.63
		-3875.5
		2987.62

QUARTER	NOBS	DEPOSITS	rezidua	WINTERS-A	Lt	Tt	St
1993Q1	1	179342.9	-26332	205675	223229.0	4938.7	-17554.5
1993Q2	2	179879.6	-18168	198048	207980.6	2920.0	-9932.6
1993Q3	3	184157.9	-8232	192390	201753.8	2005.3	-9363.6
1993Q4	4	204782.7	-707	205490	202973.5	1926.8	2516.3
1994Q1	5	215145.3	10008	205137	216020.1	3038.7	-10882.6
1994Q2	6	220120.4	3958	216162	223456.5	3478.5	-7294.0
1994Q3	7	224857.6	2623	222235	229849.5	3770.0	-7614.9
1994Q4	8	244498.9	3011	241488	236964.7	4104.5	4523.4
1995Q1	9	257013.4	9658	247356	251799.9	5177.6	-4444.2
1995Q2	10	268251.6	6685	261567	264404.7	5920.3	-2837.7
1995Q3	11	280707.7	6479	274229	277524.1	6640.2	-3295.5
1995Q4	12	306236.9	6318	299919	291184.0	7342.2	8735.2
1996Q1	13	320848.6	9636	311213	309232.8	8412.8	1979.8
1996Q2	14	329595.1	5323	324272	323560.5	9004.3	711.3
1996Q3	15	336112.3	2463	333649	335302.0	9278.0	-1653.2
1996Q4	16	365625.2	4432	361194	349504.0	9770.4	11689.6
1997Q1	17	414840.1	19291	395549	380708.8	11913.9	14840.4
1997Q2	18	441183	17226	423957	411762.3	13827.8	12195.0
1997Q3	19	443649.1	7096	436553	433475.0	14616.3	3077.7
1997Q4	20	473921.5	5091	468831	453747.5	15181.9	15083.4
1998Q1	21	493387.1	3462	489925	472776.3	15566.6	17148.6
1998Q2	22	512073.8	4153	507921	492957.3	16028.1	14963.6
1998Q3	23	527451.8	5540	521912	515140.8	16643.6	6771.0
1998Q4	24	549745.5	1036	548710	532935.5	16758.7	15774.0
1999Q1	25	559644.4	-2591	562236	546814.9	16470.8	15420.9
1999Q2	26	554565.3	-8526	563092	553812.1	15523.4	9279.5
1999Q3	27	542409.4	-12131	554540	555856.6	14175.5	-1316.3
1999Q4	28	536933.7	-17594	554528	550483.2	12220.6	4044.6
2000Q1	29	548175	-10782	558957	550723.9	11022.6	8233.0
2000Q2	30	543395.4	-9947	553342	550694.3	9917.4	2648.1
2000Q3	31	547678.9	-4182	551861	555965.1	9452.8	-4104.3
2000Q4	32	549152.9	-7311	556464	557294.0	8640.4	-829.7
2001Q1	33	568758.9	-1947	570706	563771.0	8424.0	6935.0
2001Q2	34	583195.2	3007	580188	575535.9	8758.1	4652.6
2001Q3	35	589675.9	3415	586261	588088.4	9137.6	-1827.6
2001Q4	36	595970.9	-153	596124	597055.8	9120.5	-931.8
2002Q1	37	596536.5	-5967	602503	599546.4	8457.6	2957.0
2002Q2	38	594155.3	-6660	600816	600603.5	7717.5	212.3

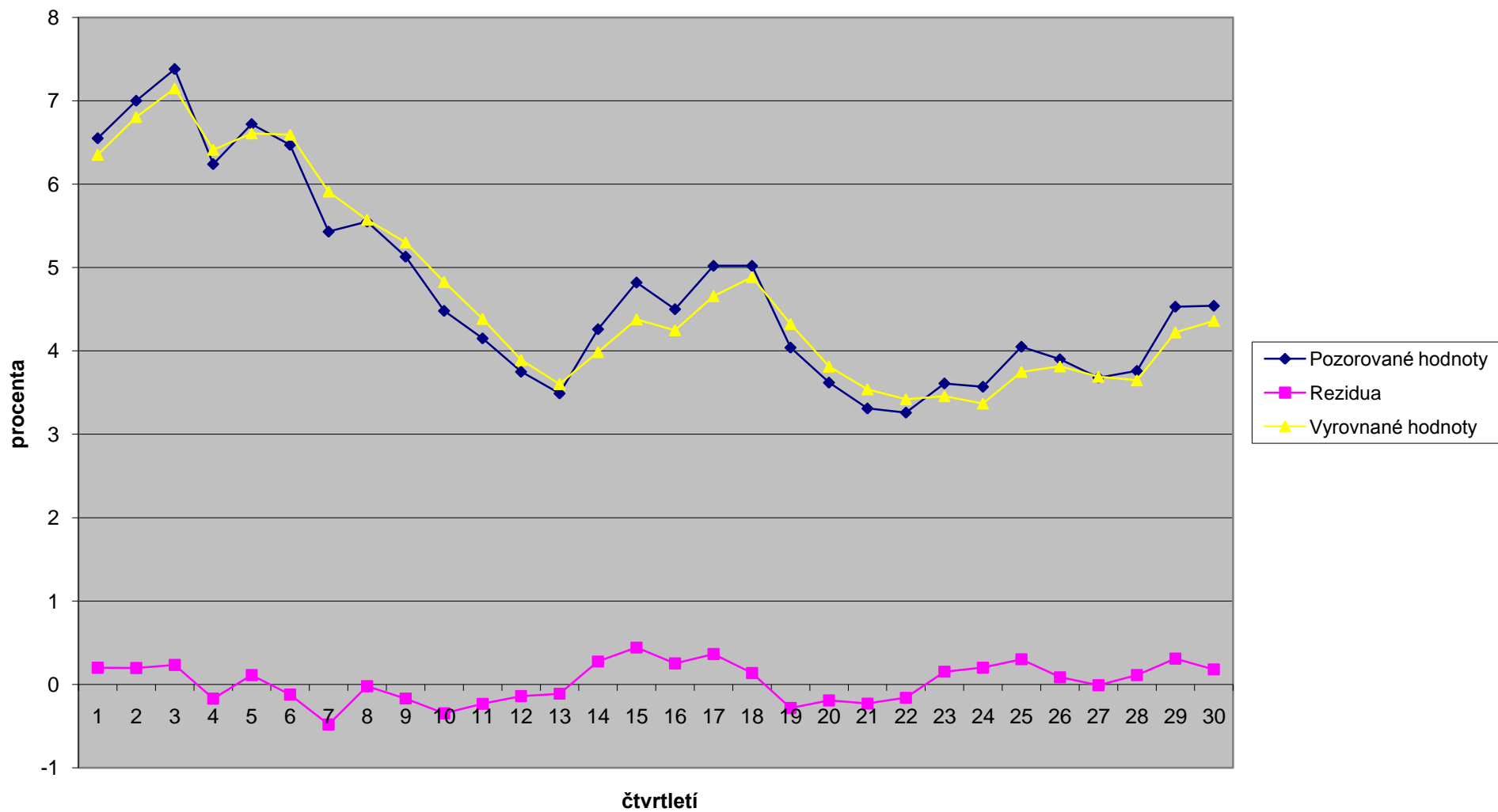
2002Q3	39	580665.6	-9298	589964	597989.9	6684.4	-8026.2
2002Q4	40	567335.8	-13106	580442	590111.6	5228.1	-9669.4
2003Q1	41	560701.5	-13534	574236	580301.6	3724.3	-6065.9
2003Q2	42	553728.3	-10984	564712	571822.0	2503.9	-7110.1
2003Q3	43	548450.7	-6426	554876	567186.3	1790.0	-12310.0
2003Q4	44	558026.2	-461	558487	568464.0	1738.7	-9976.7
2004Q1	45	557442.5	-2410	559852	567525.0	1471.0	-7672.5
2004Q2	46	563668.2	642	563027	569708.9	1542.3	-6682.3
2004Q3	47	569176.8	3685	565492	575345.4	1951.7	-9853.4
2004Q4	48	587564.8	7288	580277	585394.9	2761.5	-5118.1
2005Q1	49	584631.3	1493	583138	589815.3	2927.4	-6677.1
2005Q2	50	589489.7	1235	588255	594114.4	3064.5	-5859.3
2005Q3	51	582149.8	-1863	584013	595108.7	2857.5	-11095.6
2005Q4	52	599177.5	2279	596899	600497.9	3110.7	-3599.0
2006Q1	53	597108	64	597044	603679.2	3117.7	-6634.7
2006Q2	54	604796.4	1389	603407	608340.4	3272.1	-4933.2
2006Q3	55	606284.6	2076	604208	613919.6	3502.8	-9711.4
2006Q4	56	630641.9	6055	624587	624149.8	4175.5	437.4
2007Q1	57	636801.4	5440	631362	634369.7	4780.0	-3008.2
2007Q2	58						
2007Q3	59						
2007Q4	60						
		<b>473009</b>	<b>-487</b>				
		<b>yprum</b>	<b>ME</b>				

S01  
S02  
S03  
S04

abs.rezidua	rezidua <sup>2</sup>
205675	42302034997
198048	39223013359
192390	37013956469
205490	42226033762
205137	42081384194
216162	46726214025
222235	49388197661
241488	58316530150
247356	61184877524
261567	68417332754
274229	75201301488
299919	89951516669
311213	96853287529
324272	105152146229
333649	111321525127
361194	130460832198
395549	156459172004
423957	179739807194
436553	190578272591
468831	219802402450
489925	240026418388
507921	257983658566
521912	272391991699
548710	301082146548
562236	316109122445
563092	317072076671
554540	307515010556
554528	307501073414
558957	312432833807
553342	306187841574
551861	304550405732
556464	309652570506
570706	325705298886
580188	336618656254
586261	343701814698
596124	355363884406
602503	363010400974
600816	360979591996

589964	348057062800
580442	336913141999
574236	329746721615
564712	318899502589
554876	307887728273
558487	311908002412
559852	313434793380
563027	316998898234
565492	319781159123
580277	336721149909
583138	340050167331
588255	346044100266
584013	341071249705
596899	356288309290
597044	356462086298
603407	364100315798
604208	365067593779
624587	390109209771
631362	398617354840
0	0
0	0
0	0
<b>473496</b>	<b>245235845314</b>
<b>MAE</b>	<b>MSE</b>

### Wintersova metoda A - C932: výnosy z dluhopisů



poč.hodn.	alfa =	0.4	gama =	0.1	delta=	0.4
-----------	--------	-----	--------	-----	--------	-----

počáteční hodnoty parametrů jsou převzaty z regresního výpočtu

L0	T0	0
6.10071	-0.1046	0.31826
		0.43911
		0.19826

DATE	NOBS	REVENUE	rezidua	WINTERS-A	Lt	Tt	St
2000Q2	1	6.55	0.199	6.351	6.218	-0.082	0.133
2000Q3	2	7	0.197	6.803	6.354	-0.061	0.449
2000Q4	3	7.38	0.233	7.147	6.552	-0.035	0.595
2001Q1	4	6.24	-0.171	6.411	6.327	-0.054	0.084
2001Q2	5	6.72	0.113	6.607	6.399	-0.041	0.208
2001Q3	6	6.47	-0.121	6.591	6.223	-0.055	0.368
2001Q4	7	5.43	-0.480	5.910	5.635	-0.108	0.275
2002Q1	8	5.55	-0.022	5.572	5.503	-0.110	0.069
2002Q2	9	5.13	-0.169	5.299	5.204	-0.129	0.095
2002Q3	10	4.48	-0.347	4.827	4.690	-0.168	0.137
2002Q4	11	4.15	-0.233	4.383	4.263	-0.194	0.120
2003Q1	12	3.75	-0.140	3.890	3.914	-0.209	-0.024
2003Q2	13	3.49	-0.112	3.602	3.581	-0.222	0.021
2003Q3	14	4.26	0.275	3.985	3.665	-0.191	0.321
2003Q4	15	4.82	0.442	4.378	3.964	-0.142	0.414
2004Q1	16	4.5	0.253	4.247	4.103	-0.114	0.144
2004Q2	17	5.02	0.364	4.656	4.393	-0.074	0.263
2004Q3	18	5.02	0.137	4.883	4.472	-0.058	0.412
2004Q4	19	4.04	-0.283	4.323	4.098	-0.090	0.225
2005Q1	20	3.62	-0.192	3.812	3.795	-0.111	0.017
2005Q2	21	3.31	-0.230	3.540	3.429	-0.137	0.110
2005Q3	22	3.26	-0.160	3.420	3.115	-0.154	0.305
2005Q4	23	3.61	0.153	3.457	3.130	-0.137	0.327
2006Q1	24	3.57	0.202	3.368	3.217	-0.115	0.151
2006Q2	25	4.05	0.302	3.748	3.437	-0.081	0.311
2006Q3	26	3.9	0.086	3.814	3.451	-0.072	0.362
2006Q4	27	3.68	-0.010	3.690	3.369	-0.073	0.321
2007Q1	28	3.76	0.113	3.647	3.421	-0.060	0.226
2007Q2	29	4.53	0.309	4.221	3.704	-0.026	0.517
2007Q3	30	4.54	0.180	4.360	3.878	-0.006	0.482
2007Q4	31		-1.509	1.509	2.195	-0.174	-0.686
	32		-0.809	0.809	1.122	-0.264	-0.313
		2.837	-0.029	143.262			
		yprum	ME				



S01  
S02  
S03  
S04

abs.rezidua	rezidua <sup>2</sup>
6.351	40.330
6.803	46.284
7.147	51.077
6.411	41.105
6.607	43.654
6.591	43.447
5.910	34.926
5.572	31.048
5.299	28.083
4.827	23.298
4.383	19.208
3.890	15.132
3.602	12.972
3.985	15.881
4.378	19.170
4.247	18.041
4.656	21.682
4.883	23.846
4.323	18.692
3.812	14.530
3.540	12.528
3.420	11.696
3.457	11.952
3.368	11.345
3.748	14.051
3.814	14.546
3.690	13.612
3.647	13.303
4.221	17.818
4.360	19.010
1.509	2.278
0.809	0.654
<b>4.775</b>	<b>23.507</b>
<b>MAE</b>	<b>MSE</b>

poč.hodn.	alfa =	0.4	gama =	0.1	delta=	0.4
-----------	--------	-----	--------	-----	--------	-----

počáteční hodnoty parametrů jsou převzaty z regresního výpočtu

L0	T0	0
313427	9614.31	50394.8
		32122.3
		37107.8

DATE	NOBS	HDPCR	rezidua	WINTERS-A	Lt	Tt	St
1995Q1	1	332995	3583	329412	327022.8	10012.5	2388.9
1995Q2	2	366618	-7492	374110	328710.4	9180.0	45399.9
1995Q3	3	376688	2403	374285	340560.5	9447.0	33724.4
1995Q4	4	390221	1118	389103	351249.8	9571.2	37853.2
1996Q1	5	382859	7074	375785	368680.6	10357.2	7104.7
1996Q2	6	423953	-175	424128	378843.9	10337.8	45283.6
1996Q3	7	432152	3329	428823	392880.1	10707.6	35943.4
1996Q4	8	444324	1038	443286	404741.0	10823.0	38545.1
1997Q1	9	415593	-2547	418140	412733.7	10539.9	5406.5
1997Q2	10	455790	-4596	460386	418166.7	10029.2	42219.4
1997Q3	11	461902	-805	462707	427301.0	9939.7	35406.4
1997Q4	12	477809	728	477081	438050.0	10020.7	39030.7
1998Q1	13	457925	1601	456324	449849.8	10198.6	6474.0
1998Q2	14	512225	3585	508640	464031.3	10596.9	44609.2
1998Q3	15	512408	854	511554	475577.5	10691.8	35976.1
1998Q4	16	513925	-4095	518020	481719.3	10236.8	36300.7
1999Q1	17	481895	-5953	487848	485342.1	9575.4	2505.6
1999Q2	18	532968	-2361	535329	492294.0	9313.1	43035.1
1999Q3	19	529465	-2923	532388	498359.8	8988.3	34027.7
1999Q4	20	536469	-2585	539054	504476.2	8701.1	34577.5
2000Q1	21	504479	-4033	508512	508695.8	8253.0	-183.4
2000Q2	22	558691	-465	559156	516431.6	8201.3	42724.8
2000Q3	23	557780	-317	558097	524280.7	8166.0	33816.4
2000Q4	24	568219	430	567789	532924.6	8213.8	34864.3
2001Q1	25	540124	-299	540423	540806.0	8180.6	-382.8
2001Q2	26	598842	2567	596275	551838.8	8465.8	44436.1
2001Q3	27	599262	1851	597411	562361.1	8671.5	35050.2
2001Q4	28	613986	2912	611074	574268.2	8995.0	36805.7
2002Q1	29	576665	-2238	578903	580777.1	8746.4	-1874.5
2002Q2	30	630141	-1375	631516	587996.0	8593.7	43519.7
2002Q3	31	621004	-3829	624833	592335.3	8168.2	32497.6
2002Q4	32	636622	-247	636869	600228.7	8140.7	36640.7
2003Q1	33	598385	-2920	601305	605125.5	7816.3	-3820.9
2003Q2	34	660401	1418	658983	614517.6	7973.9	44465.2
2003Q3	35	650791	-1511	652302	620812.3	7806.0	31490.0
2003Q4	36	667533	819	666714	629527.9	7897.0	37186.5
2004Q1	37	650616	6124	644492	644229.7	8577.4	262.0
2004Q2	38	716444	6902	709542	660475.8	9344.3	49066.4

2004Q3	39	712711	4104	708607	674380.5	9800.3	34226.2
2004Q4	40	737591	5841	731750	690670.3	10449.3	41080.2
2005Q1	41	697345	-1453	698798	699504.9	10287.8	-706.8
2005Q2	42	762115	1172	760943	711095.1	10418.1	49847.8
2005Q3	43	756632	321	756311	721870.2	10453.8	34440.5
2005Q4	44	778304	1764	776540	734283.9	10649.8	42256.1
2006Q1	45	742621	-578	743199	744291.3	10585.5	-1092.2
2006Q2	46	861462	20425	841037	777571.8	12855.0	63464.8
2006Q3	47	820093	-1719	821812	788517.1	12664.0	33294.6
2006Q4	48	841083	-848	841931	800239.4	12569.9	41691.1
2007Q1	49	817704	2155	815549	815204.1	12809.4	344.7
2007Q2	50	899674	2950	896724	831291.7	13137.2	65431.8
2007Q3	51			0			
2007Q4	52			0			
		<b>174292</b>	<b>601</b>	<b>173692</b>			
		<b>yprum</b>	<b>ME</b>				

S01  
S02  
S03  
S04

abs.rezidua	rezidua <sup>2</sup>
329412	108512049386
374110	139958543275
374285	140089180923
389103	151401106659
375785	141214606056
424128	179884140384
428823	183889571702
443286	196502545078
418140	174841235773
460386	211955438978
462707	214098185507
477081	227605976176
456324	208231410698
508640	258715076798
511554	261687039027
518020	268344709520
487848	237995325890
535329	286577260689
532388	283436478492
539054	290578931733
508512	258584877534
559156	312655915769
558097	311472276952
567789	322384206749
540423	292057220545
596275	355543864028
597411	356900197431
611074	373411282002
578903	335128151250
631516	398812083833
624833	390416175797
636869	405602640962
601305	361567169624
658983	434258292014
652302	425498317911
666714	444508049497
644492	415369496127
709542	503450098038

708607	502123441942
731750	535458740691
698798	488318875795
760943	579034090654
756311	572005830665
776540	603014462001
743199	552344935105
841037	707342469510
821812	675374533140
841931	708847046306
815549	665119718082
896724	804113037541
173692	287625928585
<b>MAE</b>	<b>MSE</b>

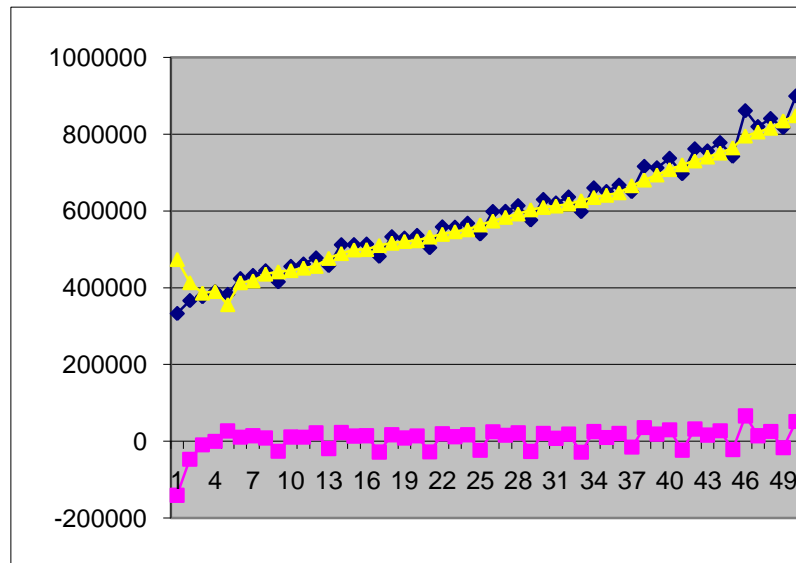
<b>počáteční hodnoty</b>	<b>0.4</b>	gama =	<b>0.1</b>	delta=	<b>0.4</b>
počáteční hodnoty parametrů jsou spočteny pomocí výpočetních postupů					
				<b>L0</b>	<b>T0</b>
				<b>545659</b>	<b>1250</b>

DATE	NOBS	HDPCR	rezidua	WINTERS-M	Lt	Tt
1995Q1	1	332995	-140827	473822	473822.4	-6058.5
1995Q2	2	366618	-46909	413527	418701.4	-10964.7
1995Q3	3	376688	-9573	386261	396982.0	-12040.2
1995Q4	4	390221	-298	390519	384616.2	-12072.8
1996Q1	5	382859	26551	356308	408099.5	-8517.2
1996Q2	6	423953	10551	413402	411452.7	-7330.1
1996Q3	7	432152	14019	418133	420132.0	-5729.2
1996Q4	8	444324	8482	435842	423685.0	-4801.0
1997Q1	9	415593	-26138	441731	441731.4	-2516.2
1997Q2	10	455790	10804	444986	444985.5	-1939.2
1997Q3	11	461902	10430	451472	451472.1	-1096.6
1997Q4	12	477809	21791	456018	456017.9	-532.4
1998Q1	13	457925	-18847	476772	476771.7	1596.2
1998Q2	14	512225	22855	489370	489370.4	2696.5
1998Q3	15	512408	13505	498903	498902.9	3380.1
1998Q4	16	513925	14192	499733	499733.2	3125.1
1999Q1	17	481895	-28365	510260	510260.0	3865.3
1999Q2	18	532968	16751	516217	516216.8	4074.4
1999Q3	19	529465	8564	520901	520901.0	4135.4
1999Q4	20	536469	13746	522723	522722.6	3904.0
2000Q1	21	504479	-27932	532411	532410.7	4482.4
2000Q2	22	558691	19315	539376	539375.8	4730.7
2000Q3	23	557780	11582	546198	546198.2	4939.9
2000Q4	24	568219	16957	551262	551261.8	4952.2
2001Q1	25	540124	-23831	563955	563955.2	5726.4
2001Q2	26	598842	24822	574020	574019.7	6160.2
2001Q3	27	599262	15619	583643	583642.6	6506.5
2001Q4	28	613986	21583	592403	592402.8	6731.8
2002Q1	29	576665	-26610	603275	603275.2	7145.9
2002Q2	30	630141	20644	609497	609497.1	7053.5
2002Q3	31	621004	7859	613145	613144.8	6712.9
2002Q4	32	636622	18171	618451	618451.2	6572.3
2003Q1	33	598385	-28568	626953	626953.4	6765.2
2003Q2	34	660401	25012	635389	635388.6	6932.2
2003Q3	35	650791	9666	641125	641125.2	6812.7
2003Q4	36	667533	19910	647623	647623.1	6781.2
2004Q1	37	650616	-15452	666068	666067.8	7947.6

2004Q2	38	716444	35660	680784	680784.0	8624.4
2004Q3	39	712711	18688	694023	694023.4	9085.9
2004Q4	40	737591	29614	707977	707976.9	9572.7
2005Q1	41	697345	-23201	720546	720546.0	9872.3
2005Q2	42	762115	31615	730500	730500.4	9880.5
2005Q3	43	756632	15930	740702	740702.4	9912.7
2005Q4	44	778304	27271	751033	751032.6	9954.4
2006Q1	45	742621	-22049	764670	764669.5	10322.7
2006Q2	46	861462	66143	795319	795319.2	12355.4
2006Q3	47	820093	14232	805861	805861.1	12174.0
2006Q4	48	841083	25455	815628	815628.2	11933.3
2007Q1	49	817704	-17081	834785	834785.1	12655.7
2007Q2	50	899674	51444	848230	848230.3	12734.6
2007Q3	51					
2007Q4	52					
		29415504	263753	29151751		

0.914	<b>S01</b>	553785	y <sub>1</sub> prum
1.062	<b>S02</b>	613794	y <sub>2</sub> prum
0.989	<b>S03</b>	585907	y <sub>3</sub> prum
1.016	<b>S04</b>	600507	y <sub>4</sub> prum

St	
0.8	0.549798
1.0	0.634528
1.0	0.635888
1.0	0.715137
0.9	0.632127
1.0	0.733761
1.0	0.729517
1.0	0.814289
0.9	0.686173
1.0	0.788863
1.0	0.779738
1.0	0.875655
0.9	0.756066
1.0	0.886538
1.0	0.864997
1.0	0.941843
0.9	0.795642
1.0	0.922439
1.0	0.893791
1.0	0.983158
0.9	0.832930
1.0	0.966960
1.0	0.941590
1.0	1.041345
0.9	0.891782
1.0	1.036451
1.0	1.011616
1.0	1.125220
1.0	0.952114
1.0	1.090622
1.0	1.048319
1.0	1.166703
1.0	0.987975
1.0	1.142995
1.0	1.098602
1.0	1.223352
1.0	1.074212





1.0	1.239992
1.0	1.203130
1.0	1.351744
1.0	1.151365
1.0	1.319038
1.0	1.277273
1.0	1.426356
1.0	1.226119
1.1	1.490983
1.0	1.384401
1.0	1.541408
1.0	1.350086
1.1	1.557119

