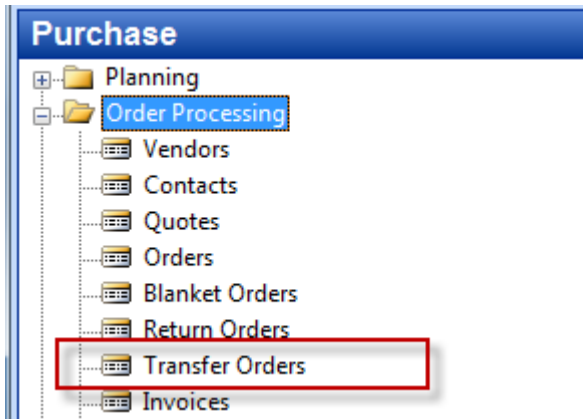


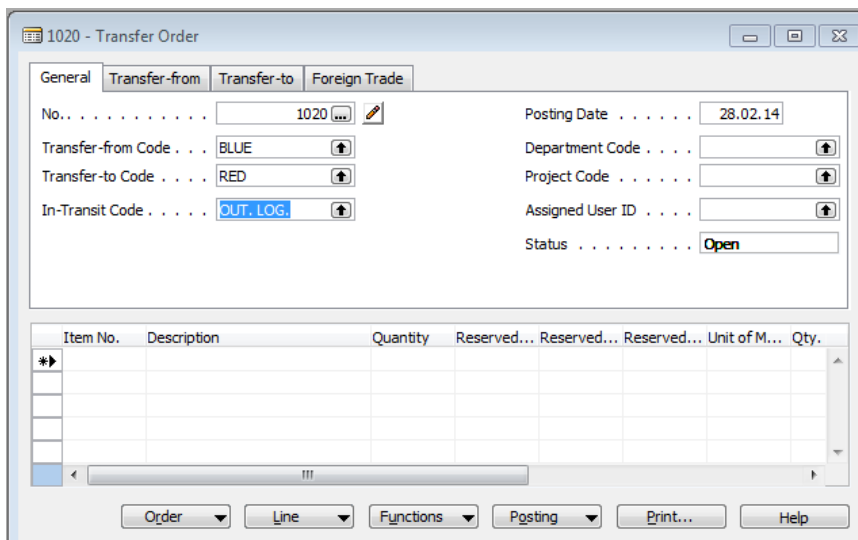
Transfer orders simplified

Created by : Skorkovský
Date : 25.4.2014
Reason : Study materiál for ERP courses

1.



2. Create header of the transfer order to transfer chosen item from **Blue** to **Red** stock location



3. Create lines of the transfer order and check Item availability par location from button Line in order to know if we have enough of item in chosen location **Blue**

1020 - Transfer Order

General | Transfer-from | Transfer-to | Foreign Trade

No. 1020

Posting Date 28.02.14

Transfer-from Code . . . BLUE

Transfer-to Code . . . RED

In-Transit Code OUT. LOG.

Department Code

Project Code

Assigned User ID

Status Open

Item No.	Description	Quantity	Reserved Quantity	Reserved Quantity	Reserved Quantity	Unit of Measure	Qty. to Ship	Quantity Shipped	Qty. to Receive	Quantity Received	Shipment Date	Receipt Date
1900-S	PARIS Guest Chair, black	1				PCS	1				28.02.14	01.03.14

Order | **Line** | Functions | Posting | Print... | Help

4. Availability looks like this

1900-S PARIS Guest Chair, black - Item Availability by Location

Options

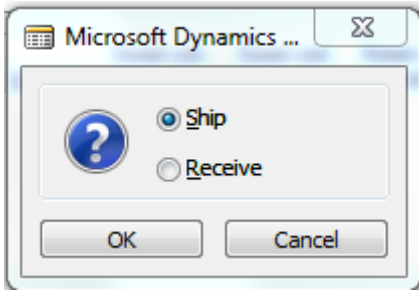
Date Filter 28.02.14

Variant Filter "

Code	Name	Gross Requirement	Scheduled Receipt	Planned Receipt	Projected Available	Planned Order Rel...
BLUE	Blue Warehouse	1	0	0	51	0
GREEN	Green Warehouse	0	0	0	35	0
RED	Red Warehouse	0	0	0	46	0
SILVER	Silver Warehouse	0	0	0	0	0
WHITE	White Warehouse	0	0	0	0	0
YELLOW	Yellow Warehouse	0	0	0	160	0

Item | Help

5. F11 in order to book shipment from **Blue** to external location defined for transport (out.log) – Enter OK



You will get this line :

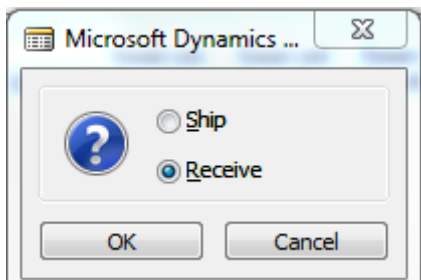
Item No.	Description	Quantity	Reserved Quantity ...	Reserved Quantity ...	Reserved Quantity ...	Unit of Measure ...	Qty. to Ship	Quantity Shipped	Qty. to Receive	Quantity Received	Shipment Date
▶ 1900-S	PARIS Guest Chair, black	1				PCS		1	1		28.02.14

And after going from the field item number by F6 to list of items and then by using Ctrl-F5 you will get these entries :

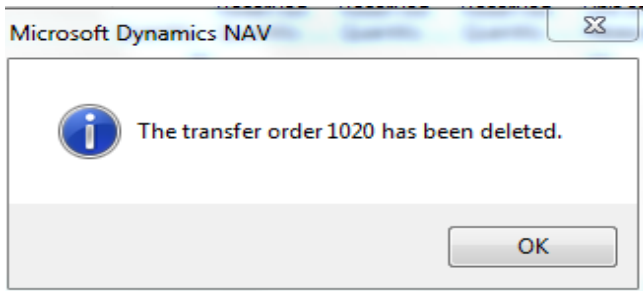
Item No.	Description	Quantity	Reserved Quantity ...	Reserved Quantity ...	Reserved Quantity ...	Unit of Measure ...	Qty. to Ship	Quantity Shipped	Qty. to Receive	Quantity Received	Shipment Date
▶ 1900-S	PARIS Guest Chair, black	1				PCS		1	1		28.02.14

Go back to the transfer order (by ESC keys) and do what is described in clause 6.

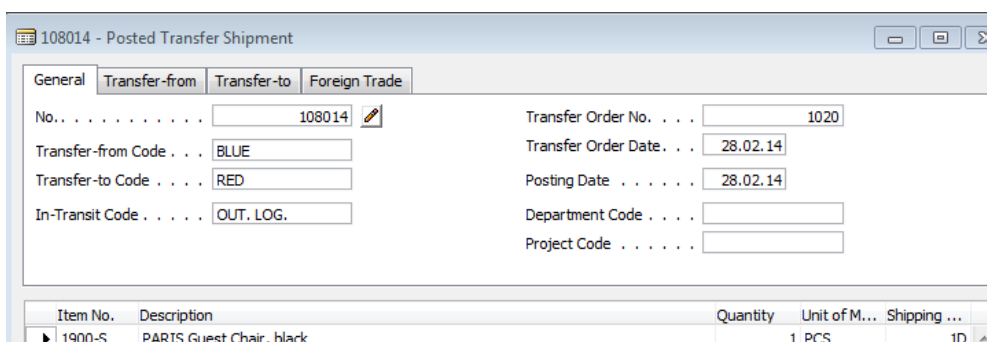
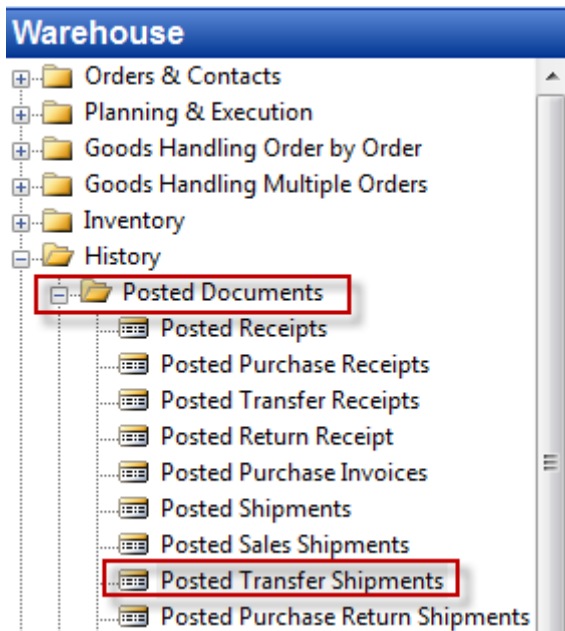
- F11 again in order to transfer item from out.log location to **RED** location (push OK)



And You will get this message :



7. Go to Warehouse-History- Posted documents- Posted Transfer Shipment and you will get :



And from there you go (field Item No) by F6 and Ctrl- F5 to entries related to posted transfer order

Item 1900-S PARIS Guest Chair, black - Item Ledger Entries

stg ite	Entry Type	Document Type	Document No.	Item No.	Description	Location Code	Quantity	Invoiced Quantity	Remaining Quantity	Sales A (Actual)
▶ 31.12.07	Positive Adjmt.		START	1900-S		BLUE	52	52	51	
31.12.07	Positive Adjmt.		START	1900-S		RED	46	46	46	
31.12.07	Positive Adjmt.		START	1900-S		GREEN	47	47	41	
11.01.08	Sale	Sales Shipment	102009	1900-S		GREEN	-6	-6	0	
13.01.08	Purchase	Purchase Receipt	107021	1900-S		YELLOW	160	160	160	
28.02.14	Transfer	Transfer Shipment	108014	1900-S		BLUE	-1	-1	0	
28.02.14	Transfer	Transfer Shipment	108014	1900-S		OUT. LOG.	1	1	0	
28.02.14	Transfer	Transfer Receipt	109011	1900-S		OUT. LOG.	-1	-1	0	
28.02.14	Transfer	Transfer Receipt	109011	1900-S		RED	1	1	1	

Entry Application Functions Navigate Help