

Instructions

- a) upgrade of the MS Dynamics NAV 2018 license
- b) connection to the ORION terminal server
- c) the location of the installation script
- d) installation instructions for MS Dynamics NAV 2018

Created by: Jaromír Skorkovský, KPH-ESF-MU Czech Republic

Date: 08.09.2020

Reason: training, internal material

Database: MS Dynamics NAV 2018

Intended for students of courses (**MPH_AOPR**)

- a) upgrade of the MS Dynamics NAV 2018 license is not valid for international students because they do not have installed ERP MS Dynamics NAV 2018w1 so far

b) Connection to the terminal server Orion Terminal Server

Students of the ESF faculty can access the faculty applications ASPI, Witness, MS Dynamics NAV 2018, or TaxEdit from a network outside the ESF. Access is provided through a connection to a terminal server.

For licensing reasons, access to the terminal server is only allowed to ESF students. Faculty staff do not have access to the terminal

The connection is possible from Windows 7 and later operating systems (using Remote Desktop with network-level authentication)

Possible connection method

Just start the client for "Remote Desktop Connection" (mstsc.exe). You will find the client:

In Windows 10, between programs under the letter "P"; Windows accessories; Remote Desktop Connection

When logging in to the "computer" field, enter the text: Orion.econ.mu-ni.cz, or the IP address: 147.251.190.14

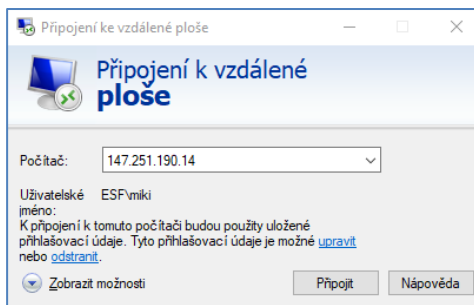
English version of the screen will be supplied later:

Connection to the remote screen

Computer: 147.251.190.14

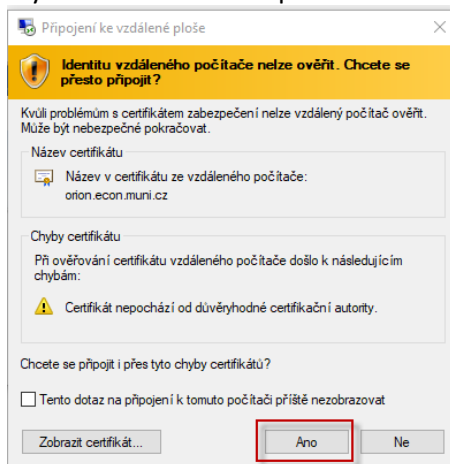
User name: ESF/your name

Připojit =Connect



As a login for the login, type a string in the form: ESF \ your UČO
Use your faculty password as the password.

If you are notified of a problem with the certificate, select "YES" - connect.



Start ERP Microsoft Dynamics NAV 2018w1 (English database) by the related icon.

- c) **Instructions for installing MS Dynamics NAV 2018** using the installation script. The manual is intended for those students who have not yet installed this ERP system. It is a copy of the material that was part of the study materials for the summer semester 2020.

MS Dynamics Nav 2018w1+ home installation procedure

CZ + EN database

Minimum recommended PC configuration:

i5 processor or higher 8 GB RAM or more Windows 10 OS

You can find the source on the network in :

Programs (\\ ds02) (Q) \ MS Dynamics NAV \ NAV2018 directory

copy the whole subdirectory to your newly created TEMP directory (see below)

To download the entire package, the size of which is in the order of gigabytes, you will need to be physically present at the ESF and connected to the faculty network. If for some reason, you fail, then you will have to use the ORION server from time to time, where the program we will work with is installed. There is no need to be physically on the ESF – remote access is enough.

1. If installed, uninstall older versions of MS NAV + older versions of Microsoft SQL Server

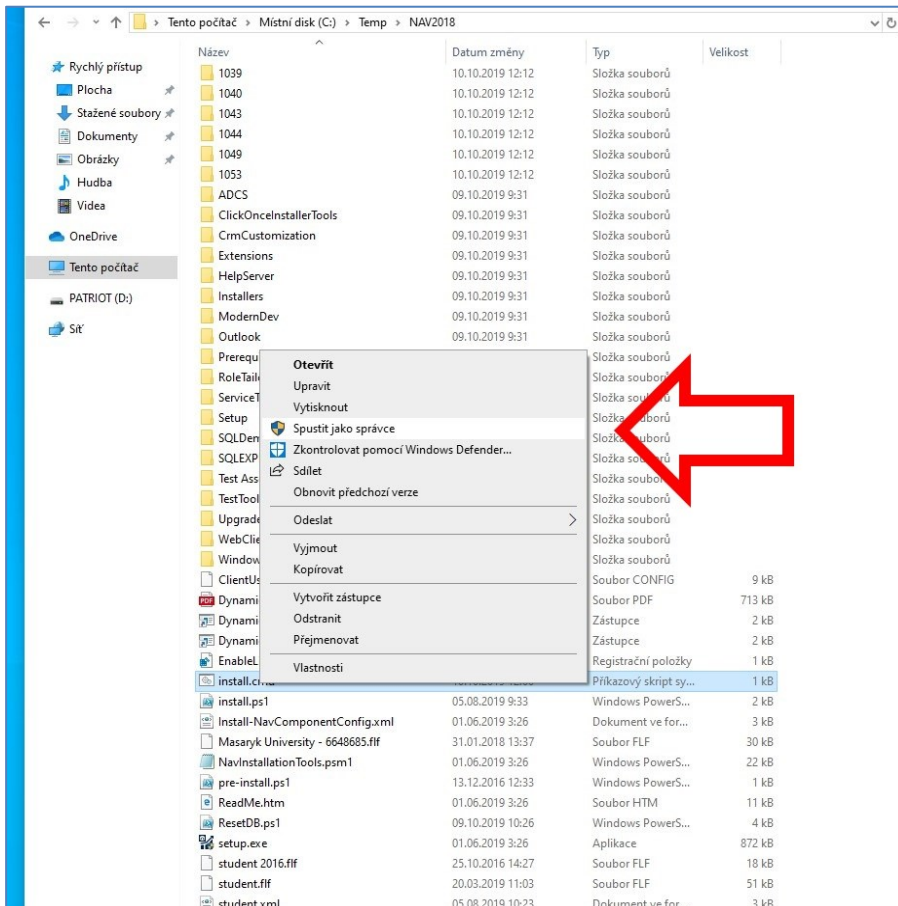
Zapnout nebo vypnout funkce systému Windows

Název	Vydavatel	Nainstalov...	Velikost	Verze
IrfanView 4.51 (32-bit)	Irfan Skiljan	17.08.2019	3,50 MB	4.51
iTunes	Apple Inc.	19.09.2019	398 MB	12.10.0.7
K-Lite Codec Pack 14.1.0 Full	KLCP	25.04.2018	134 MB	14.1.0
Language Teacher		17.08.2019		
Microsoft Dynamics NAV 2016	Microsoft Corporation	17.08.2019		9.0.49146.0
Microsoft ODBC Driver 11 for SQL Server	Microsoft Corporation	16.05.2018	4,61 MB	12.0.2000.8
Microsoft Office Professional Plus 2016	Microsoft Corporation	17.08.2019		16.0.4266.1001
Microsoft OneDrive	Microsoft Corporation	11.09.2019	138 MB	19.152.0801.0007
Microsoft Report Viewer 2015 Runtime	Microsoft Corporation	16.05.2018	25,7 MB	12.0.2402.15
Microsoft SQL Server 2008 Setup Support Files	Microsoft Corporation	15.01.2019	100 MB	5.1.50918.0
Microsoft SQL Server 2012 Native Client	Microsoft Corporation	16.05.2018	38,9 MB	10.3.5500.0
Microsoft SQL Server 2014 (64-bit)	Microsoft Corporation	17.08.2019	7,22 MB	11.0.2100.60
Microsoft SQL Server 2014 Management Objects (x64)	Microsoft Corporation	16.05.2018	14,3 MB	12.0.2000.8
Microsoft SQL Server 2014 Setup (English)	Microsoft Corporation	19.11.2018	178 MB	12.0.2269.0
Microsoft SQL Server 2014 Transact-SQL ScriptDom	Microsoft Corporation	16.05.2018	6,18 MB	12.0.2000.8
Microsoft System CLR Types for SQL Server 2014	Microsoft Corporation	16.05.2018	5,61 MB	12.0.2402.11
Microsoft System CLR Types for SQL Server 2014	Microsoft Corporation	16.05.2018	5,70 MB	12.0.2402.11
Microsoft Visual C++ 2008 Redistributable - x64 9.0.30729.6161	Microsoft Corporation	25.04.2018	13,2 MB	9.0.30729.6161
Microsoft Visual C++ 2008 Redistributable - x86 9.0.30729.6161	Microsoft Corporation	25.04.2018	10,1 MB	9.0.30729.6161
Microsoft Visual C++ 2010 x64 Redistributable - 10.0.40219	Microsoft Corporation	16.05.2018	13,8 MB	10.0.40219
Microsoft Visual C++ 2010 x86 Redistributable - 10.0.40219	Microsoft Corporation	16.05.2018	11,1 MB	10.0.40219
Microsoft Visual C++ 2013 Redistributable (x64) - 12.0.30501.0	Microsoft Corporation	17.08.2019	20,5 MB	12.0.30501.0

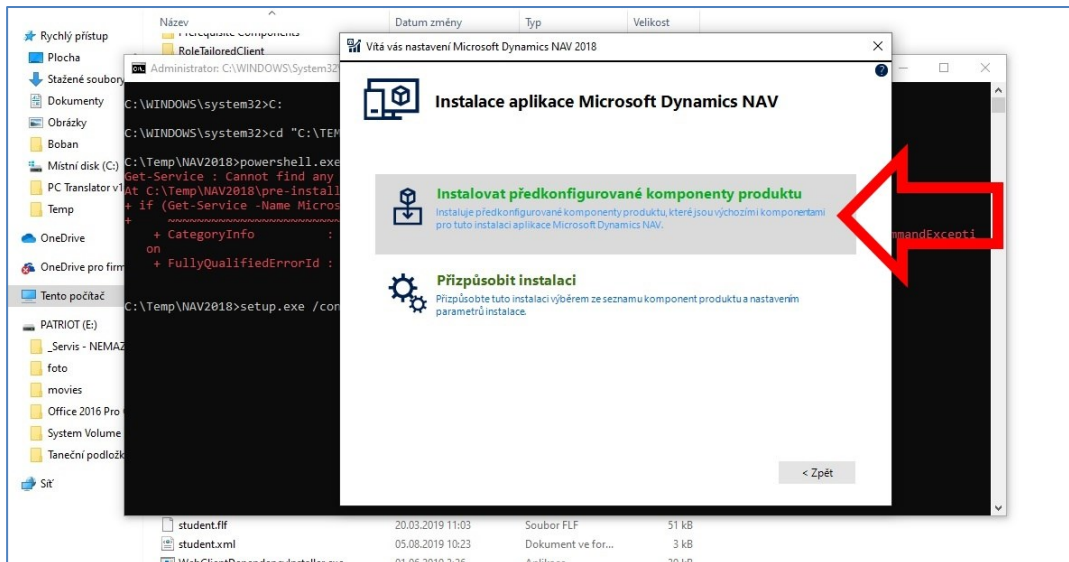
2. Create a new C: \ Temp directory (if it does not exist)
3. Copy the NAV2018 directory from the flash drive to C: \ Temp (the directory C: \ Temp \ NAV2018 will be created)

4. Find and **Run** C: \ Temp \ NAV2018 \ instal.cmd

!!! **Run** as Administrator - right-click - Run as Administrator as you can see below:



5. Click through the installation guide for MS Dynamics NAV. Do not change anything during the wizard; confirm the default option “Install pre-configured product components.”



6. If the installation script runs without problems, two icons for launching the Czech and English databases (“Dynamics NAV 2018” and “Dynamics NAV 2018 W1”) will appear on the desktop, and the program will start automatically twice for both databases.