

Jak na Exc

Obsah cvičení

Hierarchie

Relace

Pavel Lasák

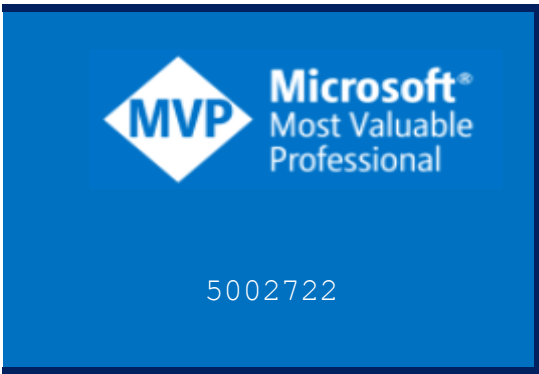
Lektor, expert na Microsoft Excel, držitel prestižního ocenění
Microsoftu MVP v České republice

Další informace ke cvičení:

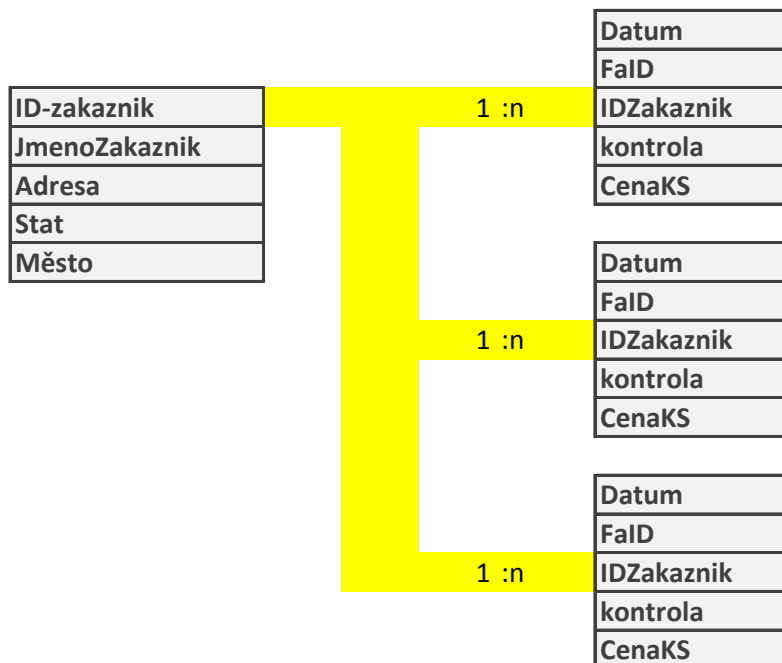
<https://office.lasakovi.com/excel/PowerPivot/hierarchie-tabulky-Power-Piv>

<https://office.lasakovi.com/excel/PowerPivot/Jak-na-relace-Power-Pivot-Ex>

cel



Teorie databáze



Úkol kontingenčka

Úkol počítané sloupce

Přidej 10 % k ceně

Vypočti Zisk

Úkol počítané položky (hodnoty)

Mít nainstalován PowerPivot
Přidat data do datového modelu

Relace

Spravovat relace

| Stav | Tabulka ▲ | Související vyhledávací tabulka |
|---------|--------------------|---------------------------------|
| Aktivní | Fakt1 (IDZakaznik) | Zakaznik (IDZakaznik) |
| Aktivní | Fakt2 (IDZakaznik) | Zakaznik (IDZakaznik) |
| Aktivní | Fakt3 (IDZakaznik) | Zakaznik (IDZakaznik) |

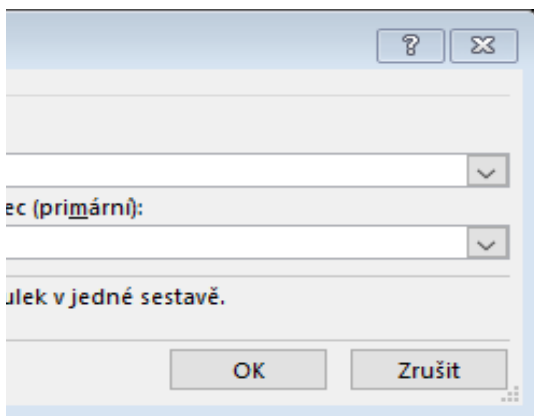
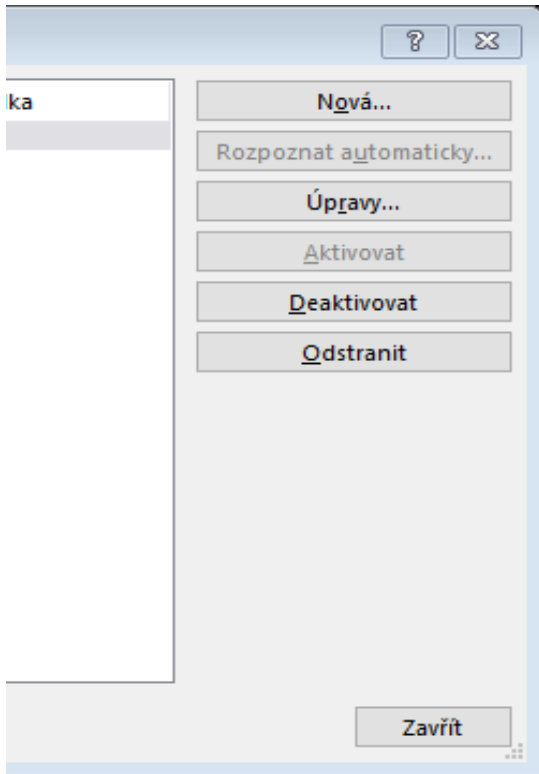
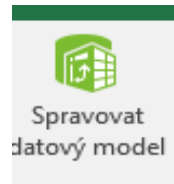
Upravit vztah

Vyberte tabulky a sloupce, které se mají použít v této relaci.

| | | | |
|----------------------|-----------------------------------|----------------------|------------|
| Tabulka: | Tabulka datového modelu: Fakt1 | Sloupec (cizí): | IDZakaznik |
| Související tabulka: | Tabulka datového modelu: Zakaznik | Související sloupec: | IDZakaznik |

Vytvoření relace mezi tabulkami je potřeba k zobrazení příbuzných dat z různých tabulek.

Datový model

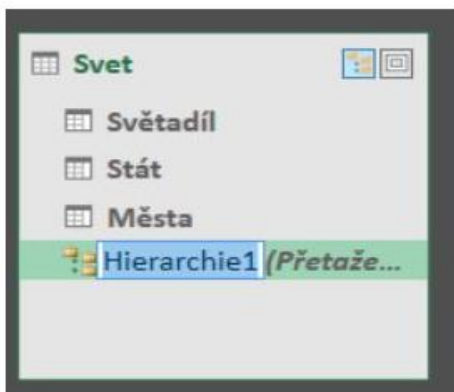


Hierarchie

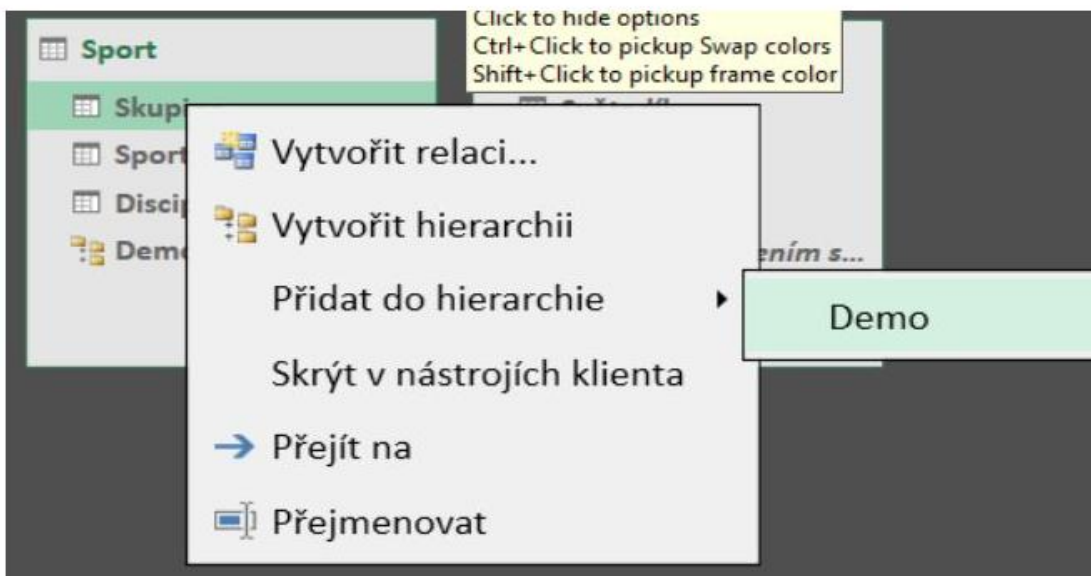
Pozice Světadíl |-- Stát |--- Města |----- Ulice

Skupina > Sport > Disciplína

Sezona > Rok > Město



Pravým tlačítkem nad sloupcem, který chcete do hierarchie přidat a vyberete do které hierarchie (v ukázce výběr moc nemáte ;)).



jen jec

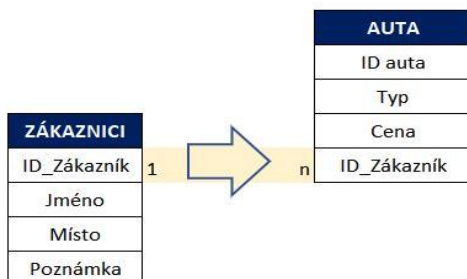


Relace

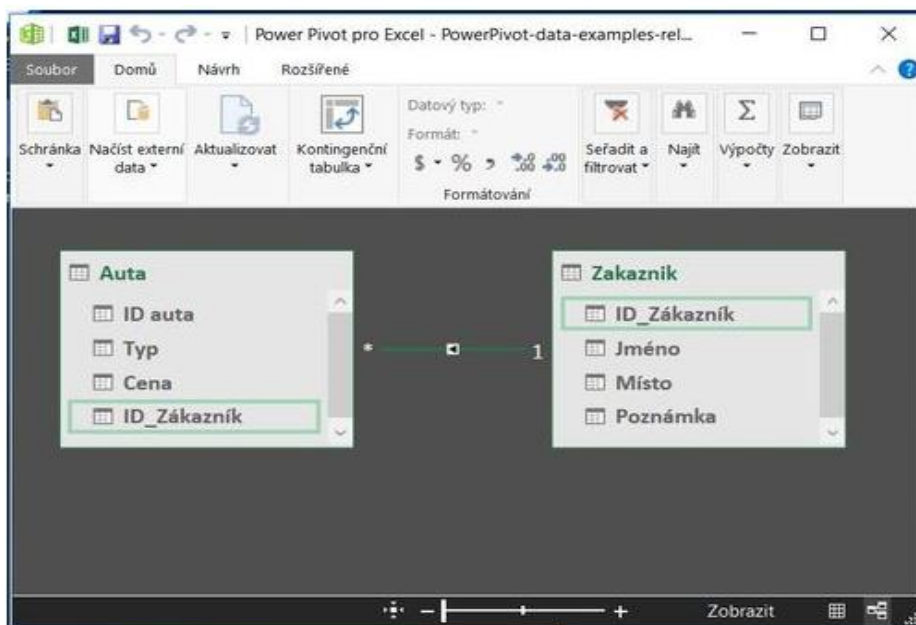
Relace v Power Pivot

<http://JakNaExcel.cz/>

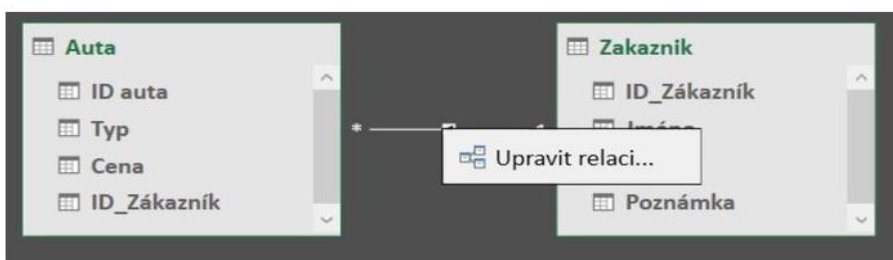
Relace



Pavel Lasák rev. 2019



Upravit relaci



| ID | JmenoZakaznik | Adresa | Stat |
|-----|---------------|----------------------|--------|
| ID1 | ABCD | 1234 Westown Road | USA |
| ID2 | XYZ | 4321 West Broadway | USA |
| ID3 | Telemarketing | 12345 21st Ave S | Mexiko |
| ID4 | Otravové | 9876 N. Pioneer Road | Mexiko |
| ID5 | Fantomasové | 5678 Fraser Ave N. | Mexiko |
| ID6 | Rákosničci | 1234 Sunlight Place | Mexiko |

Mesto

West Des Moines

Montreal

Lawrence

Gary

Mishawaka

Iowa City

| Datum | FaID | IDZakaznik | kontrola | CenaKS |
|-----------|-----------|------------|----------|--------|
| 5/6/2004 | QTEST1005 | ID1 | ID1 | 674.5 |
| 5/10/2004 | INV1018 | ID2 | ID2 | 0.16 |
| 5/10/2004 | ORDPH1005 | ID3 | ID3 | 674.5 |
| 5/10/2004 | INVPS1004 | ID4 | ID4 | 93.55 |
| 5/11/2004 | ORDST1009 | ID5 | ID5 | 395.1 |
| 5/13/2004 | ORDST1010 | ID6 | ID6 | 50.25 |
| 5/17/2004 | INV1010 | ID1 | ID1 | 5.98 |
| 5/18/2004 | INVSP1001 | ID2 | ID2 | 18.65 |
| 5/19/2004 | ORDST1014 | ID3 | ID3 | 93.55 |
| 5/20/2004 | ORDST1011 | ID4 | ID4 | 0.16 |
| 5/22/2004 | ORDPH1004 | ID5 | ID5 | 674.5 |
| 5/22/2004 | INVSP1002 | ID6 | ID6 | 115.85 |
| 7/8/2004 | ORDST1021 | ID6 | ID6 | 91.59 |

| Datum | FaID | IDZakaznik | kontrola | CenaKS |
|----------|------------|------------|----------|---------|
| 1/6/2006 | ORDST2008 | ID1 | ID1 | 149.95 |
| 1/6/2006 | STDINV2008 | ID2 | ID2 | 91.59 |
| 1/7/2006 | ORDST2009 | ID3 | ID3 | 59.29 |
| 1/7/2006 | STDINV2009 | ID4 | ID4 | 59.5 |
| 3/2/2006 | ORDST2182 | ID5 | ID5 | 5.98 |
| 3/2/2006 | STDINV2184 | ID6 | ID6 | 674.5 |
| 3/2/2006 | ORDST2076 | ID1 | ID1 | 2998.15 |
| 3/2/2006 | STDINV2077 | ID2 | ID2 | 674.5 |

| Datum | FaID | IDZakaznik | kontrola | CenaKS |
|-----------|------------|------------|----------|---------|
| 1/7/2007 | STDINV2128 | ID1 | ID1 | 3.29 |
| 1/7/2007 | ORDST2127 | ID2 | ID2 | 3.29 |
| 1/17/2007 | ORDST2138 | ID3 | ID3 | 1197 |
| 1/17/2007 | STDINV2139 | ID4 | ID4 | 1197 |
| 1/18/2007 | STDINV2140 | ID5 | ID5 | 6921.88 |
| 1/18/2007 | ORDST2139 | ID6 | ID6 | 50.25 |
| 2/3/2007 | ORDST2149 | ID1 | ID1 | 90.25 |
| 2/3/2007 | STDINV2150 | ID2 | ID2 | 479.05 |
| 2/3/2007 | STDINV2149 | ID3 | ID3 | 1197 |
| 2/3/2007 | ORDST2148 | ID4 | ID4 | 55.5 |
| 2/16/2007 | ORDST2159 | ID1 | ID1 | 59.5 |
| 2/16/2007 | STDINV2161 | ID2 | ID2 | 5.98 |
| 3/3/2007 | ORDST2183 | ID3 | ID3 | 3463.73 |
| 3/3/2007 | STDINV2185 | ID4 | ID4 | 674.5 |
| 3/11/2007 | STDINV2198 | ID1 | ID1 | 3.29 |
| 3/11/2007 | ORDST2196 | ID2 | ID2 | 3.29 |
| 3/11/2007 | ORDST2195 | ID3 | ID3 | 1197 |
| 3/11/2007 | STDINV2197 | ID4 | ID4 | 1197 |
| 3/22/2007 | ORDST2212 | ID5 | ID5 | 6921.88 |
| 3/22/2007 | STDINV2214 | ID6 | ID6 | 50.25 |

| Datum | FaID | IDZakaznik | kontrola | CenaKS |
|-----------|------------|------------|----------|---------|
| 5/6/2004 | QTEST1005 | ID1 | ID1 | 674.5 |
| 5/10/2004 | INV1018 | ID2 | ID2 | 0.16 |
| 5/10/2004 | ORDPH1005 | ID3 | ID3 | 674.5 |
| 5/10/2004 | INVPS1004 | ID4 | ID4 | 93.55 |
| 5/11/2004 | ORDST1009 | ID5 | ID5 | 395.1 |
| 5/13/2004 | ORDST1010 | ID6 | ID6 | 50.25 |
| 5/17/2004 | INV1010 | ID1 | ID1 | 5.98 |
| 5/18/2004 | INVSP1001 | ID2 | ID2 | 18.65 |
| 5/19/2004 | ORDST1014 | ID3 | ID3 | 93.55 |
| 5/20/2004 | ORDST1011 | ID4 | ID4 | 0.16 |
| 5/22/2004 | ORDPH1004 | ID5 | ID5 | 674.5 |
| 5/22/2004 | INVSP1002 | ID6 | ID6 | 115.85 |
| 7/8/2004 | ORDST1021 | ID1 | ID1 | 91.59 |
| 1/6/2006 | ORDST2008 | ID2 | ID2 | 149.95 |
| 1/6/2006 | STDINV2008 | ID3 | ID3 | 91.59 |
| 1/7/2006 | ORDST2009 | ID4 | ID4 | 59.29 |
| 1/7/2006 | STDINV2009 | ID5 | ID5 | 59.5 |
| 3/2/2006 | ORDST2182 | ID6 | ID6 | 5.98 |
| 3/2/2006 | STDINV2184 | ID1 | ID1 | 674.5 |
| 3/2/2006 | ORDST2076 | ID2 | ID2 | 2998.15 |
| 3/2/2006 | STDINV2077 | ID3 | ID3 | 674.5 |
| 1/7/2007 | STDINV2128 | ID4 | ID4 | 3.29 |
| 1/7/2007 | ORDST2127 | ID5 | ID5 | 3.29 |
| 1/17/2007 | ORDST2138 | ID6 | ID6 | 1197 |
| 1/17/2007 | STDINV2139 | ID1 | ID1 | 1197 |
| 1/18/2007 | STDINV2140 | ID2 | ID2 | 6921.88 |
| 1/18/2007 | ORDST2139 | ID3 | ID3 | 50.25 |
| 2/3/2007 | ORDST2149 | ID4 | ID4 | 90.25 |
| 2/3/2007 | STDINV2150 | ID5 | ID5 | 479.05 |
| 2/3/2007 | STDINV2149 | ID6 | ID6 | 1197 |
| 2/3/2007 | ORDST2148 | ID1 | ID1 | 55.5 |
| 2/16/2007 | ORDST2159 | ID2 | ID2 | 59.5 |
| 2/16/2007 | STDINV2161 | ID3 | ID3 | 5.98 |
| 3/3/2007 | ORDST2183 | ID4 | ID4 | 3463.73 |
| 3/3/2007 | STDINV2185 | ID5 | ID5 | 674.5 |
| 3/11/2007 | STDINV2198 | ID6 | ID6 | 3.29 |