

Microsoft 365 Business Central Introduction

(ERP=Microsoft Dynamics 365 Business Central)

Ing.J.Skorkovský,CSc.

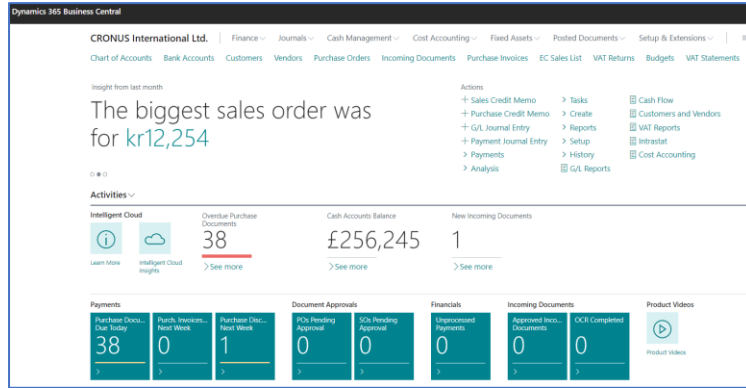
Department of Business Management

Faculty of Business and Administration

Masaryk University Brno

Czech Republic

Principles

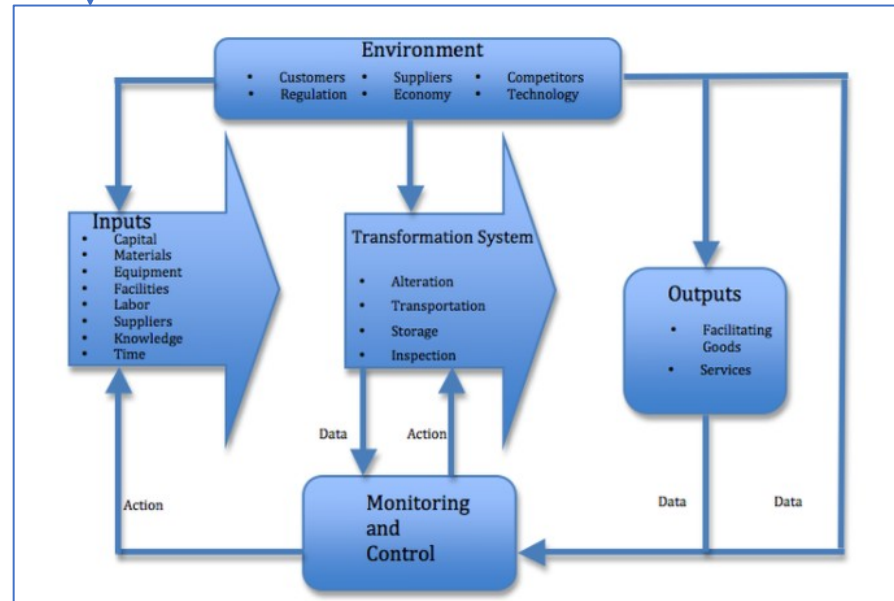


Information technology



Data

Management philosophy



Feedback

Access to BC



- <https://dynamics-esf.ucn.muni.cz/514441>

- User name = UČO and 1st Password=**Password1**

The prime password for everyone (students only) is Password1, and enter a new password will be after login created by you. Let see for instance **514411xy**, where **xy** is two characters of the alphabet of the student's choice (e.g., Ab, fU, etc.)

Úpravy - Enter Password

Old Password

Password

Confirm Password

Password1

514411Ab

514411Ab

Ok Storno

User Card | Work Date: 7/22/2022

Ulianova Nataliia

Web Service Access Key is being deprecated on SaaS. Please use OAuth. Don't show me again | Show more

ACS Setup Change Password Change Web Service Key Effective Permissions Actions Fewer options

Windows Authentication

Windows User Name

Access Control Service Authentication >

Business Central Password Authentication

Password

User must change password at next login

Due to the user setting, you must have to enter a new password the first time you enter your ID and preset prime password=Password1.

After 1st login you will be asked to change this prime password to your unique password consisting of your UČO and two characters of the alphabet of the student's choice (e.g., Ab, fU, etc.).

Next login will be always : ID= UČO and PSW= UČO**xy**

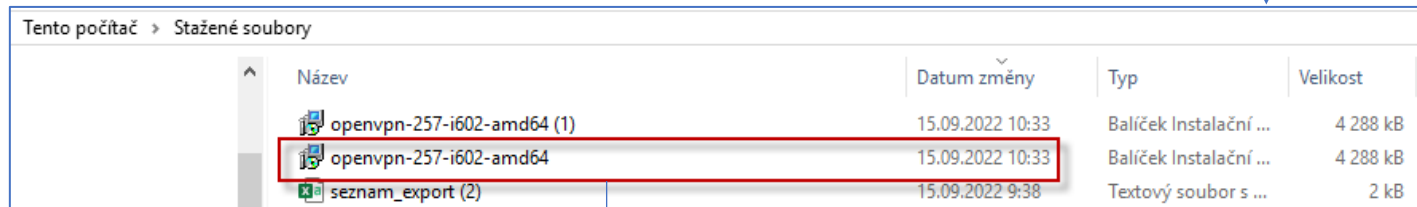
Remote Access from your PC at home

- If you are connected to the faculty network, then you only use one of these this links
 - <https://dynamics-esf.ucn.muni.cz/514441>
- If you are connected to a different network, then you must install the MUNI VPN on your computers (see instructions at the link provided below and a brief description of the procedure in this presentation) and then access Business Central using either the same link as the one used if connected to ESF net or by use of
-
- Access to the server is now possible only from the MU network. Access from other networks (from home or abroad) will now only be possible when using [MUNI VPN](#).

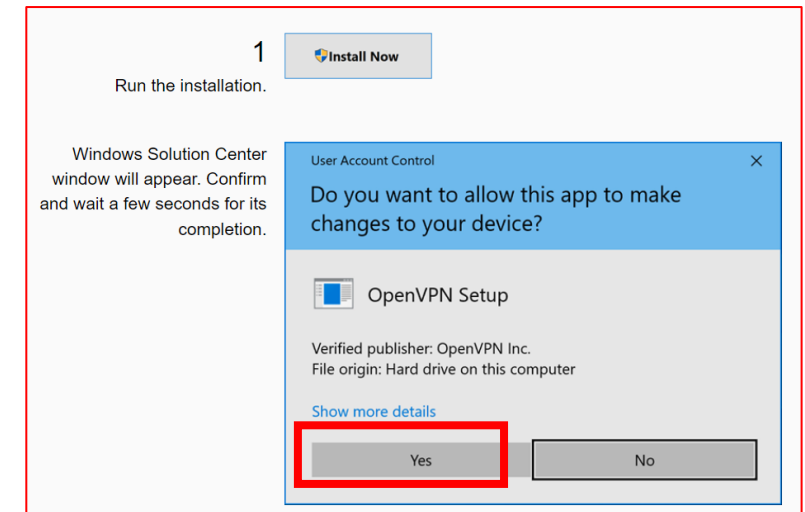
MUNI VPN I. (home study)

Every active MU student or staff member can make use of a VPN. In order to log in, one must use **UČO** and a [secondary password](#) as login data.

Download the OpenVPN client (for [32b system](#) and [64b system](#)). To find out the system type, click Start - Settings - System - About - System Type. Supported versions of Windows is 10 and 11. Older Windows operating systems are not supported.



Název	Datum změny	Typ	Velikost
openvpn-257-i602-amd64 (1)	15.09.2022 10:33	Balíček Instalační ...	4 288 kB
openvpn-257-i602-amd64	15.09.2022 10:33	Balíček Instalační ...	4 288 kB
seznam_export (2)	15.09.2022 9:38	Textový soubor s ...	2 kB



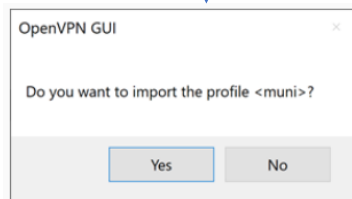
MUNI VPN II. (home study)



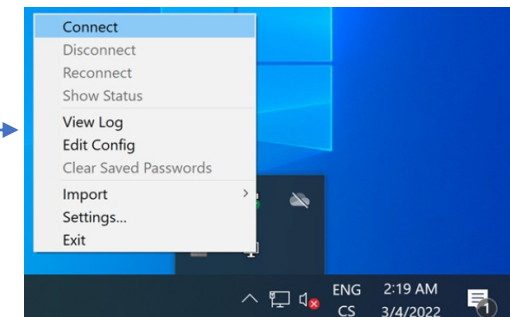
An icon of the freshly installed OpenVPN will appear on your desktop (and also right in the system taskbar).

Download the [configuration file](#).

Start the file. You will be prompted to import the configuration. Accept it. If you want to send network traffic only to the MU network, you will find this option in [FAQ](#).

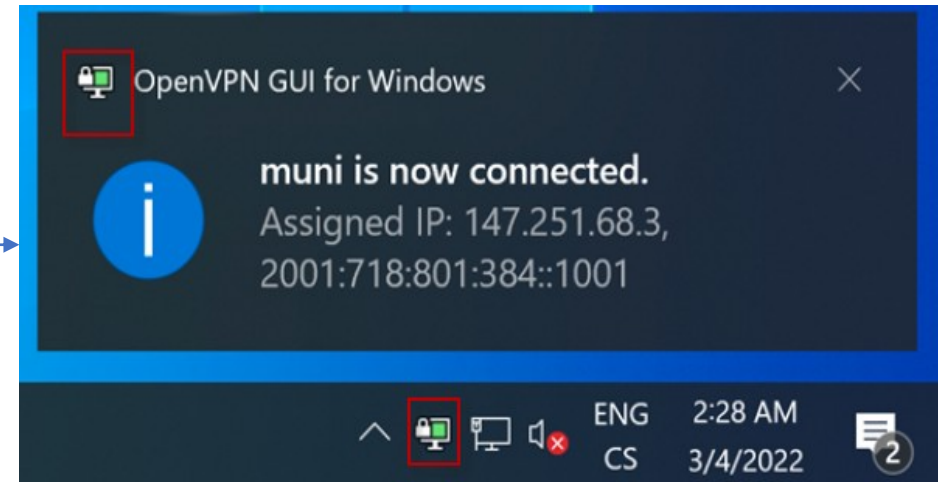
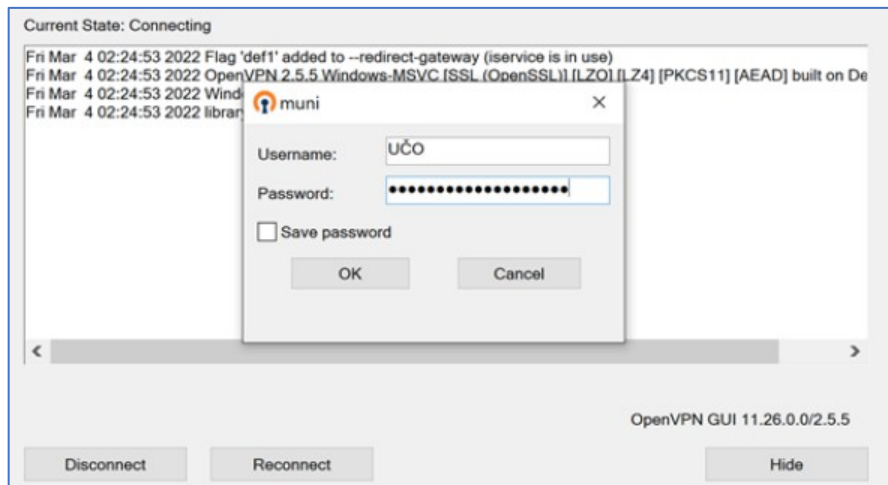


After running the **OpenVPN**, a graphic interface icon will appear on the system taskbar. For connecting, tap the *application icon* and select *Connect*.



MUNI VPN III. (home study)

- The application's login window will appear. You will be asked to enter login data. Use your **UČO** as *Username* and your **secondary password** as *Password*, then confirm by tapping *OK*.





THE END