

Person Tagging in Still Images by Fusing Face and Full-body Detections

Vlastislav Dohnal (dohnal@fi.muni.cz) and Alexander Matecny

DISA Lab – disa.fi.muni.cz

Masaryk University, Brno, Czech Republic

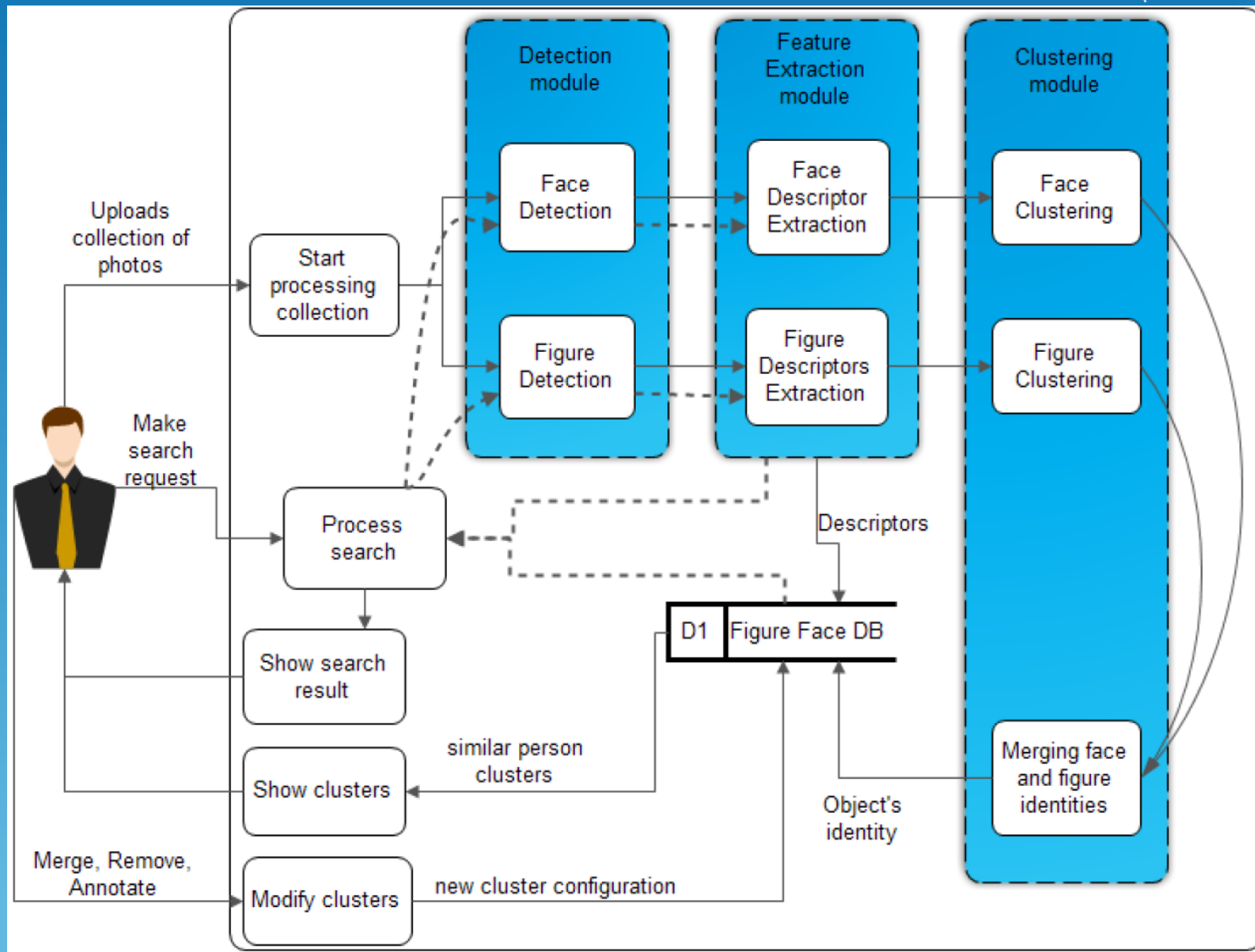
Outline

- Motivation
- System architecture
 - Figure recognition
- Experimental results
- Conclusions

Motivation

- Application: person tagging in personal photo albums
 - State of the art: Face recognition is used
- Figure/body detectors exist
 - Based on detecting person head, or
 - full-body/torso detector
 - But typically applied to video signal
- Aim: tag people that do not have their face detected
 - Tag such people using figure recognition, i.e. figure detector applied to still images

Framework for Person Recognition



Prototypical Implementation

- Detection module
 - Face detector: Luxand SDK
 - Figure detector: Edgelets [1]
- Extraction module
 - Face descriptor: Luxand SDK
 - Figure descriptor:
 - Obtain clothing patch region
 - MPEG-7 visual descriptor
- Clustering module
 - Objective function based on maximum distance within cluster members

Figure Detection: Edgelets

- Detect edges
- Match edgelets (lines, arks, symmetrical pairs)
- Group edgelets to identify a body part
 - By AdaBoost

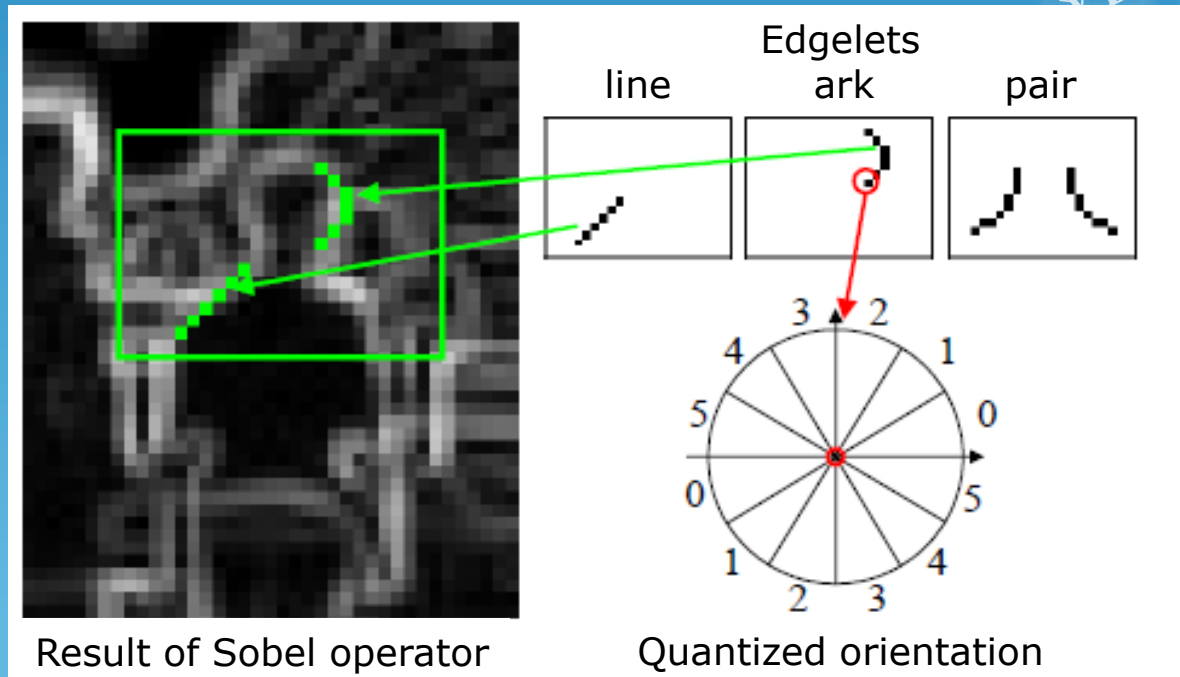


Figure Detection: Merging & Patch

- Merge detections

$$\frac{area(R_{body1} \cap R_{body2})}{\min(area(R_{body1}), area(R_{body2}))} \geq 0.72$$

- Clothing patch

- Defined by shrinking the figure detection region
 - Width [0.30; 0.70], height [0.32; 0.58]

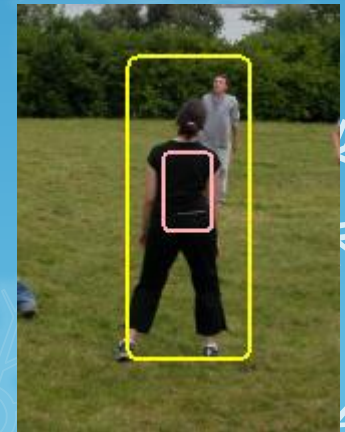
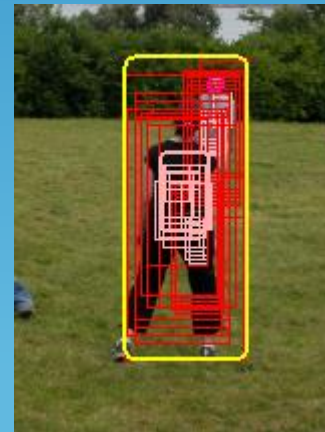


Figure Detection: Quality

- Figure detector training
 - Positives: 914 person images from MIT dataset
 - Negatives: 1,886 images from INRIA Holidays dataset
- Figure detector quality
 - Tested on ETH dataset
 - 1,201 person figures in 196 images, i.e. ground truth is defined
 - 817 people correctly detected (68%)
 - 1,943 false detections (i.e. 29.6% precision)

Figure Descriptor

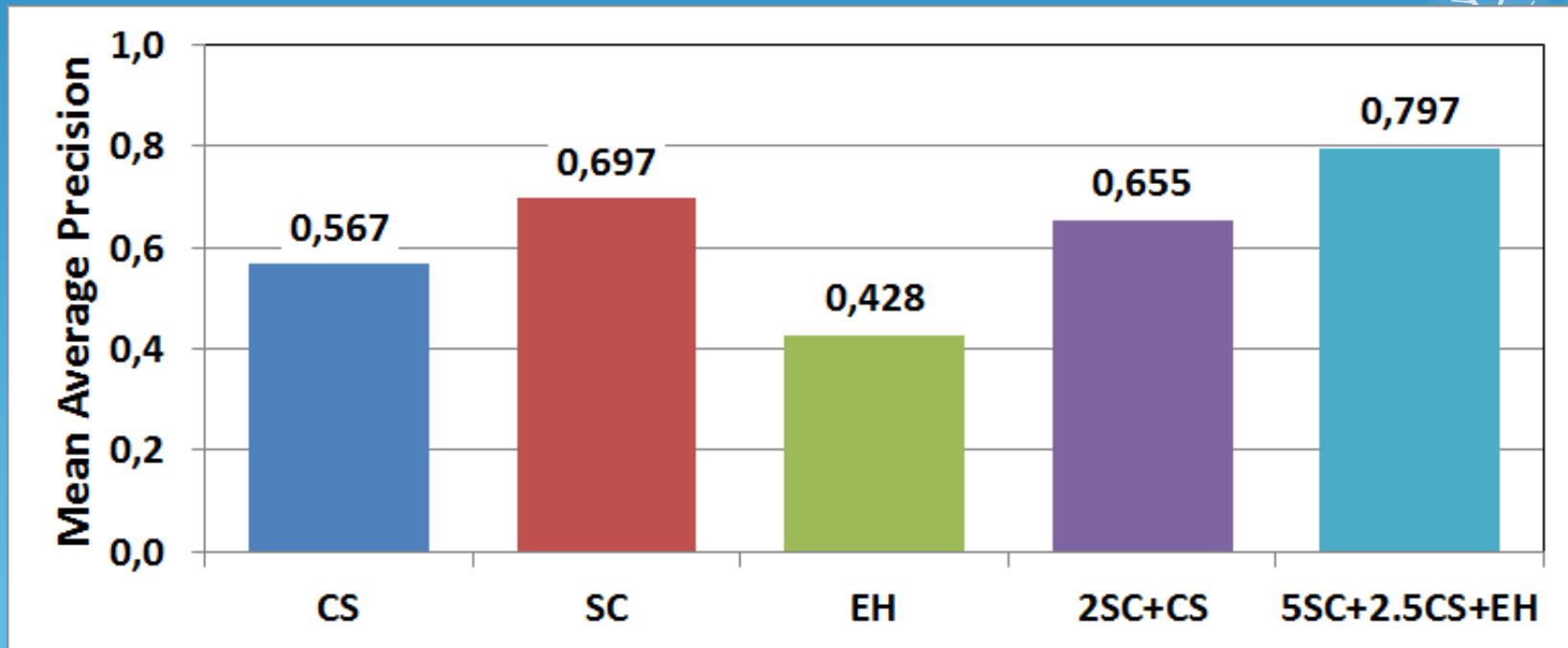
- MPEG7 standard descriptors
 - Extracted from clothing patch region
 - Color structure (CS), scalable color (SC), edge histogram (EH), and their combination

Figure Descriptor: Recognition

- Figure recognition

- Tested on ETH dataset

- Descriptors: Color structure (CS), scalable color (SC), edge histogram (EH), and their combinations



Clustering Detections

- Face clustering

- Similar faces form a cluster (distance < 0.14)

- Figure clustering

- Similar clothing patches (distance < 1.28)

- Face and figure correspondence

- $$\frac{\text{area}(R_{\text{face}} \cap R_{\text{top_body}})}{\min(\text{area}(R_{\text{face}}), \text{area}(R_{\text{top_body}}))} \geq 0.10$$

- $R_{\text{top_body}}$ = top third of the figure region

- Image file IDs are respected

- Two different detections in the same file cannot be merged

Experimental Evaluation

- Whole system tested on a small personal album
 - 24 photos, 76 figures, 54 faces, 26 distinct person identities (11 of them repeated)

● Detection results:

- 7 correct faces (13%)
- 54 correct figures (71%)
- 24 false-posit. figs

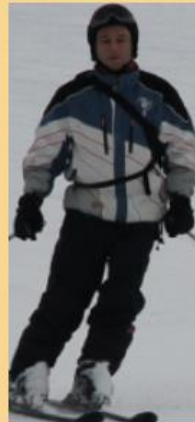
● Clustering results:

- 6 - ok (14%)
- 3 - different people (7%)
- 7 - mix of false/true positives
- 27 - only one detection (63%)

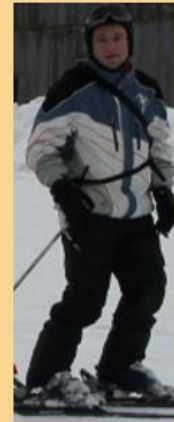
12 MMEDIA, Nice, France

(7) Person 000050128

[Name](#) | [Merge with](#) | [Similar](#)



IMG_5466.JPG



IMG_5462.JPG



IMG_5464.JPG

[Name as](#) | [Unknown person](#) | [Not a person](#) | [Similar](#)



February 27, 2014 IMG_5464.JPG

More results at <http://disa.fi.muni.cz/mmedia2014/>

Conclusions

- Framework for combining face and figure detection for person identification
 - A preliminary implementation
 - Identification using body clothing patches
- Future plans
 - Prepare independent head and upper-body detectors
 - Improve merging detection regions
 - Use personal photos only to train the detectors
 - Test other figure detectors
 - Test better clothing patch extractor (e.g. based on segmentation)

Experimental Evaluation

- One cluster of different people
 - Clothing patches are very similar






10. Person figure 000050050

Name | Merge with

| | | | |
|--|--|--|--|
|  |  |  |  |
| IMG_5488.JPG | IMG_5488.JPG | IMG_5617.JPG | IMG_5455.JPG |
| <u>Name as</u> <u>Unknown person</u> <u>Not a</u> | <u>Name as</u> <u>Unknown person</u> <u>Not a</u> | <u>Name as</u> <u>Unknown person</u> <u>Not a</u> | <u>Name as</u> <u>Unknown person</u> <u>Not a</u> |
| <u>person</u> | <u>person</u> | <u>person</u> | <u>person</u> |

Experimental Evaluation

○ Different clusters of ungrouped detections

| | | | |
|---|---|---|---|
| <p>34. Person figure 000050107</p> <p>Name Merge with</p>  <p>IMG_5473.JPG</p> <p>Name as Unknown person Not a person</p> | <p>35. Person figure 000050108</p> <p>Name Merge with</p>  <p>IMG_5473.JPG</p> <p>Name as Unknown person Not a person</p> | <p>36. Person figure 000050109</p> <p>Name Merge with</p>  <p>IMG_5473.JPG</p> <p>Name as Unknown person Not a person</p> | <p>37. Person figure 000050110</p> <p>Name Merge with</p>  <p>IMG_5473.JPG</p> <p>Name as Unknown person Not a person</p> |
| <p>39. Person figure 000050124</p> <p>Name Merge with</p>  <p>IMG_5588.JPG</p> <p>Name as Unknown person Not a person</p> | <p>40. Person figure 000050126</p> <p>Name Merge with</p>  <p>IMG_5588.JPG</p> <p>Name as Unknown person Not a person</p> | <p>41. Person figure 000050127</p> <p>Name Merge with</p>  <p>IMG_5588.JPG</p> <p>Name as Unknown person Not a person</p> | <p>42. Person figure 000050130</p> <p>Name Merge with</p>  <p>IMG_5484.JPG</p> <p>Name as Unknown person Not a person</p> |

Experimental Evaluation

- A cluster with false and true positive detections
- Clothing patches are similar

6. Person 000050120

Name | Merge with



IMG_5526.JPG

Name as Unknown person | Not a
person



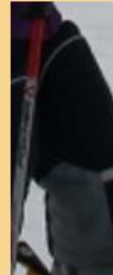
IMG_5498.JPG

Name as Unknown person | Not a
person



IMG_5459.JPG

Name as Unknown person | Not a
person



IMG_5462.JPG

Name as Unknown person | Not a
person



IMG_5454.JPG

Name as Unknown person | Not a
person



IMG_5491.JPG

Name as Unknown person | Not a
person



IMG_5495.JPG

Name as Unknown person | Not a
person



IMG_5588.JPG

Name as Unknown person | Not a
person



IMG_5588.JPG

Name as Unknown person | Not a
person



IMG_5588.JPG

Name as Unknown person | Not a
person



IMG_5588.JPG

Name as Unknown person | Not a
person



IMG_5588.JPG

Name as Unknown person | Not a
person