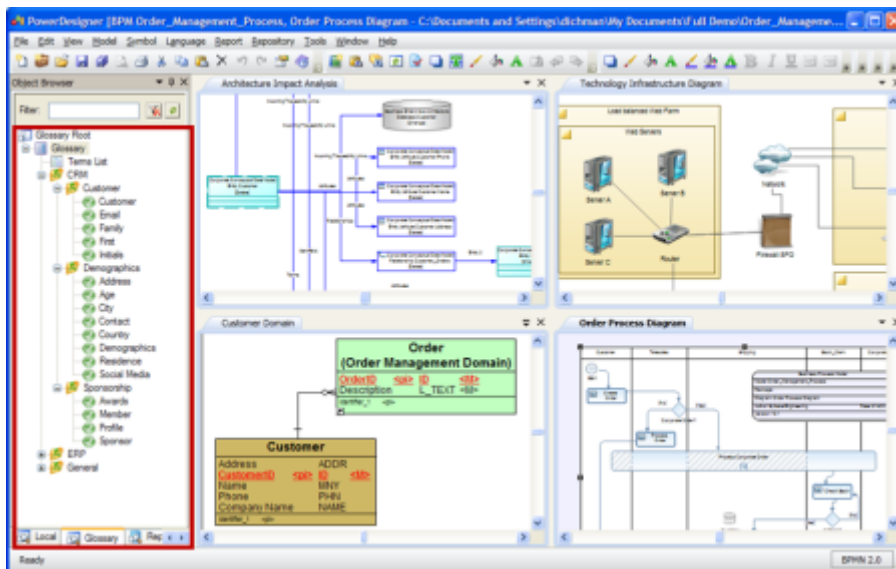




## Hodnocení 6 nejlepších nástrojů pro datové modelování

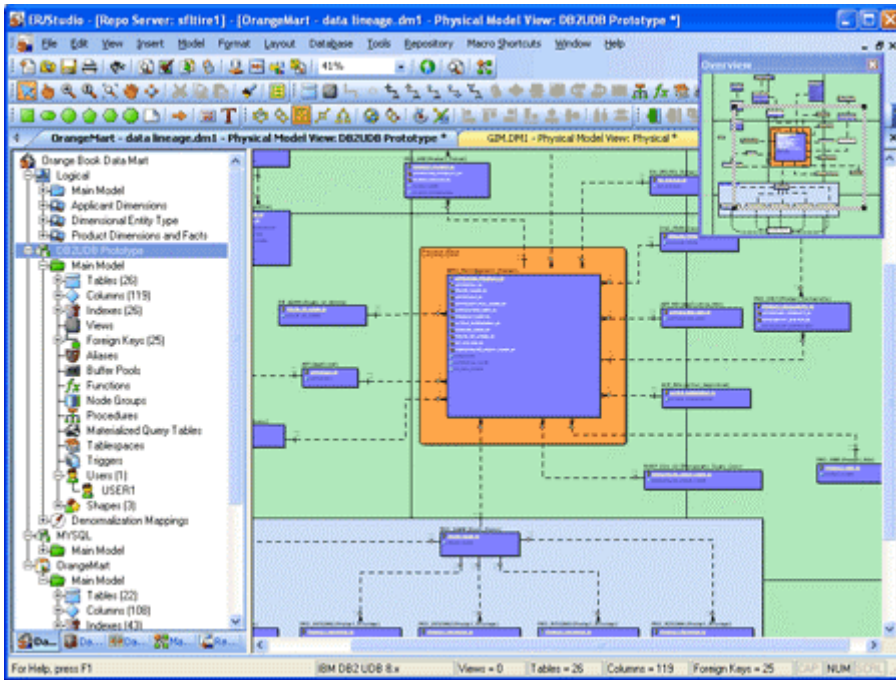
### PowerDesigner

PowerDesigner is arguably the industry's leading data modelling tool. Its features include: fully integrated models, different modelling techniques that cater to both an IT-centric audience and non IT-centric. It also supports a powerful metadata repository and various output formats. It has a nice and polished user interface with easily readable help documentation aiding the user to quickly solve ad hoc problems.



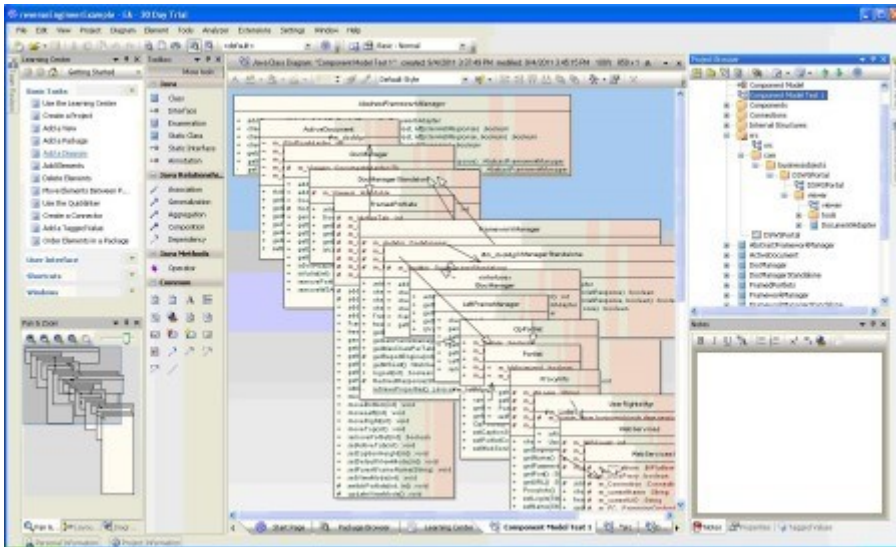
### ER/Studio

ER/Studio is an intuitive data modelling tool that supports single and multi-platform environments, with native integration for big data platforms such as – MongoDB and Hadoop Hive. It can forward and reverse engineer models, includes a compare and merge function and is able to create reports in various formats (XML, PNG, JPEG). Built-in features automate routine tasks and supports the popular database platforms. ER/Studio is a great tool that that is easy to start working with due to its intuitive design and good user support.



### Sparx Enterprise Architect

Enterprise Architect is a feature rich data modelling tool that prides itself on being the cost-efficient option. It helps business users build robust and maintainable systems quickly and can easily scale to accommodate large teams collaborating on shared projects. Enterprise Architect also has the capability of running a dynamic model simulations to verify the correctness of models and provide better understanding of how specific business systems operate.



### Oracle SQL Developer Data Modeler

Oracle data modeller is a free graphical tool to help business users with data modelling tasks. This tool is robust, offering features and utilities centred around productivity. This includes easily accessible report tool, DDL preview capabilities, built in quality check tool and a sophisticated search engine.



