



**VV034
PHOTOGRAPHY**

**Special Effects /
WATER LIGHT
REFRACTION +
SMALL WORLD**

Mgr. et MgA. Veronika Lukášová, Ph.D.

EXCURSION 1

MUSEUM PHOTOGRAPHY INTERVENTION

+ MOTION BLUR & PANNING & ZOOM Lens effect

In this excursion, we are going to meet at the given location to photograph 2 assignments inside a museum institution. We will then continue to work outside perfecting our motion blur and panning capture as our next 2 assignments.

GROUP 1 (Tues Group) date: March 28, 2023

LOCATION: TBD - most Brno museums are closed on Mon and Tues so I am negotiating access to an alternative institutions. I will send details ASAP. TECHNICAL MUSEUM IS A POSSIBILITY. CAN WE MAKE IT THERE FOR 4PM? OR EARLIER?

GROUP 2 (Wed Group) date: March 29, 2023

LOCATION: Umělecko-průmyslové muzeum, ART DESIGN FASHION museum, Moravská galerie v Brně Husova 18, 662 26 Brno, <https://moravska-galerie.cz>

TIME: we are going to meet here at 14:00

ALERT: the museum is free but we may venture to the special paid exhibit which should be around 50-100Kč. You can choose not to see the paid exhibit.

EQUIPMENT: please let me know who needs a camera so I can bring it for your CONDUCT: we will respect museum's code of conduct - treat the collections respectfully and do not use flash

EXCURSION 2 / BOTANICAL PHOTOGRAPHY+SCALE IN PHOTOGRAPHY+DIGITAL COLLAGE

In this excursion, we are going to meet at the **Masaryk's University Botanical Gardens**, not far from the FIMU building. We will photograph outside and in the greenhouses (50Kč entrance fee). We will then return to the FIMU building to work on a digital collage in the classroom, using the photos we've made.

LOCATION: The Botanical Garden of the Faculty of Science, Masaryk University, Kotlářská 2, 611 37 Brno-střed,
https://www.sci.muni.cz/bot_zahr/index.php/en-gb/

ALERT: the gardens are free but we will definitely need to go to the green houses - entrance fee is 50Kč

EQUIPMENT: please let me know who needs a camera so I can bring it for your

CONDUCT: https://www.sci.muni.cz/bot_zahr/index.php/en-gb/for-visitors/visitor-rulesand

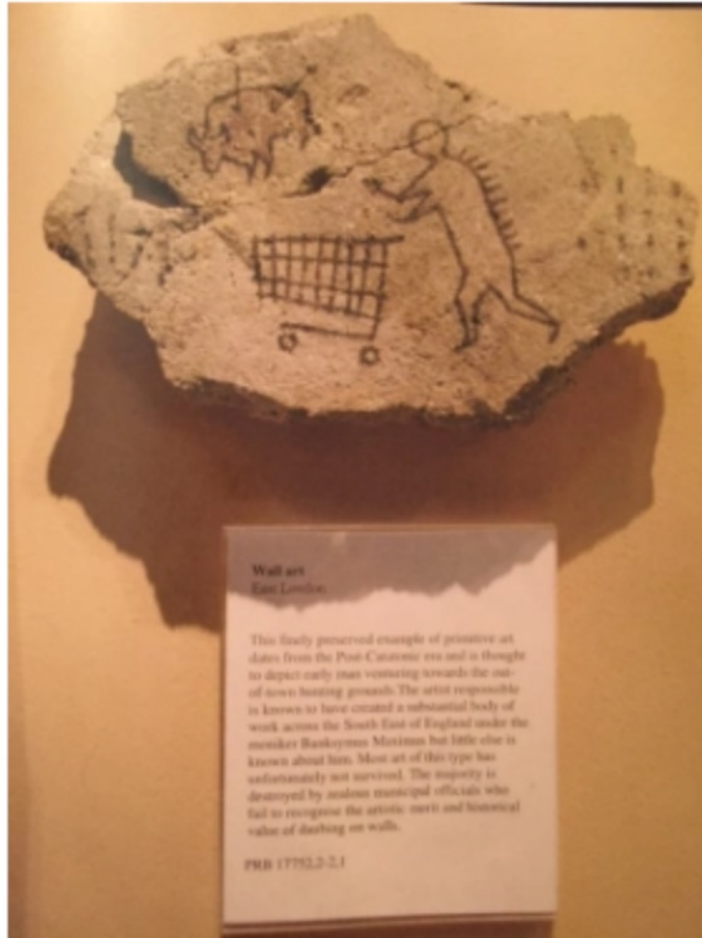
GROUP 1 (Tues Group) date: April 25, 2023 (I originally said April 11)

We will meet at the Botanical Gardens at 4pm. Please feel free to go earlier if you can. The garden closes at 5pm so please come before or on time to have enough time to shoot.

GROUP 2 (WED Group) date: April 26, 2023 (I originally said April 12)

We will meet at the Botanical Gardens at 2pm.

Museum intervention



“This finely preserved example of primitive art dates from the Post-Catonic era and is thought to depict early man venturing towards the out-of-town hunting grounds. The artist responsible is known to have created a substantial body of work across the South East of England under the moniker Banksymus Maximus but little else is known about him. Most art of this type has unfortunately not survived. The majority is destroyed by zealous municipal officials who fail to recognize the artistic merit and historical value of daubing on walls.”

Economy of taste - who decides?

In the contemporary art world, forces of "taste" are very different from 300, 100 or even 50 years ago. It used to be the national museums and galleries.

Now it is collectors with money. Who should decide?

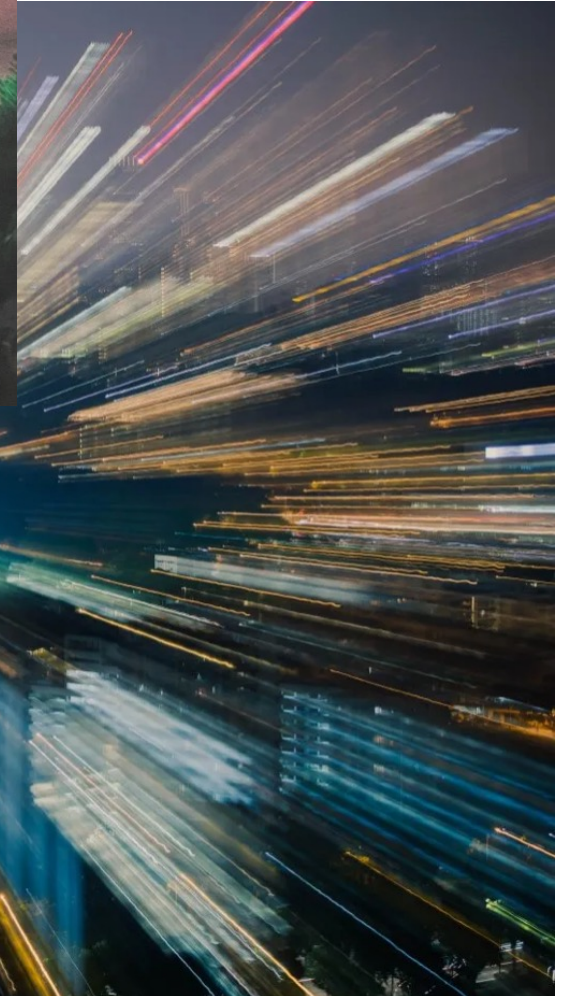
This question is open. We live in a society where individuals voice their opinion and it is difficult to get a consensus.

I propose to embody this discussion through an intervention in a museum - with your own object of art or design.

Panning/ Motion blur



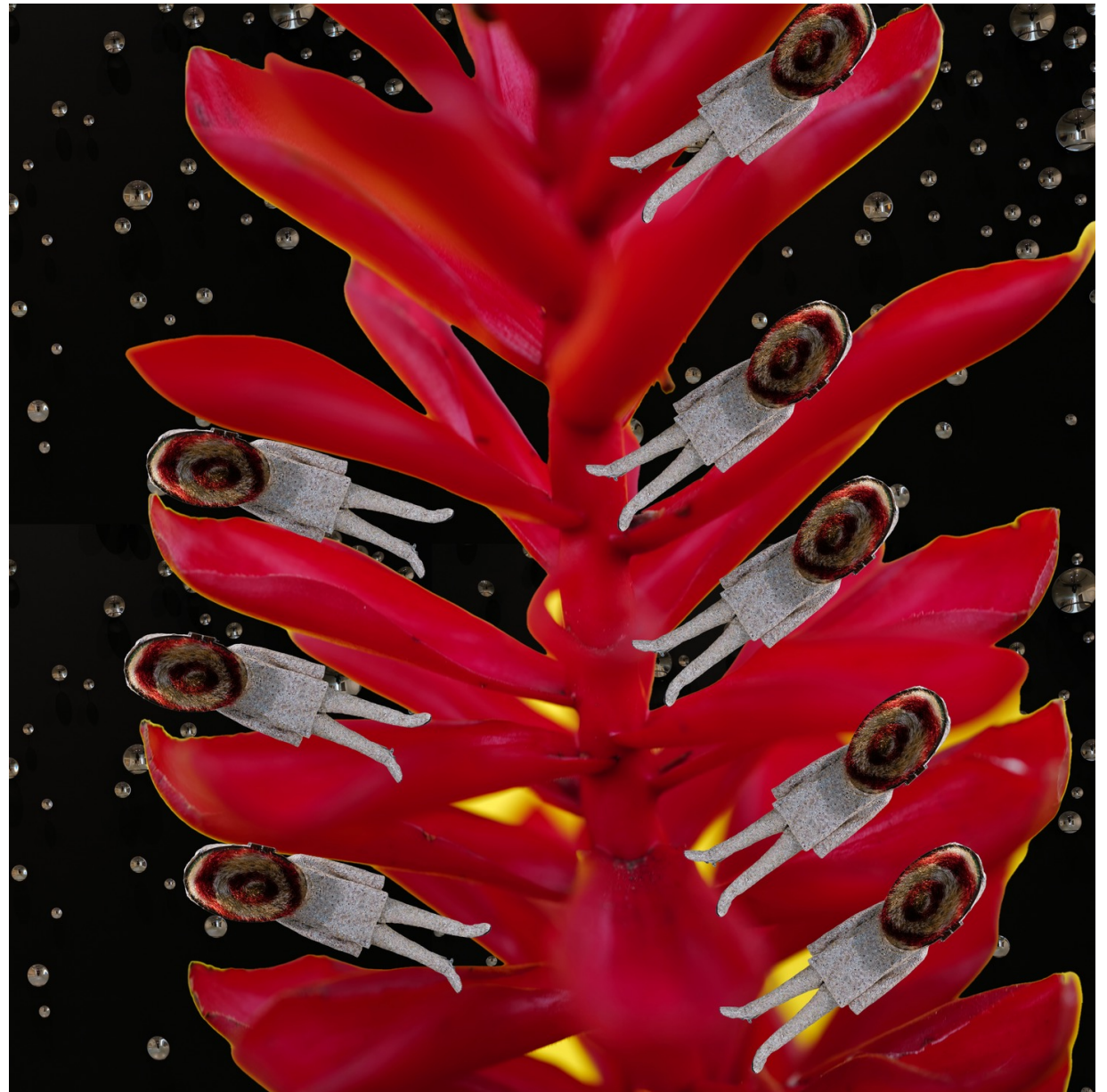
ZOOOOM Lens effect



Botanical photography + Digital Collage

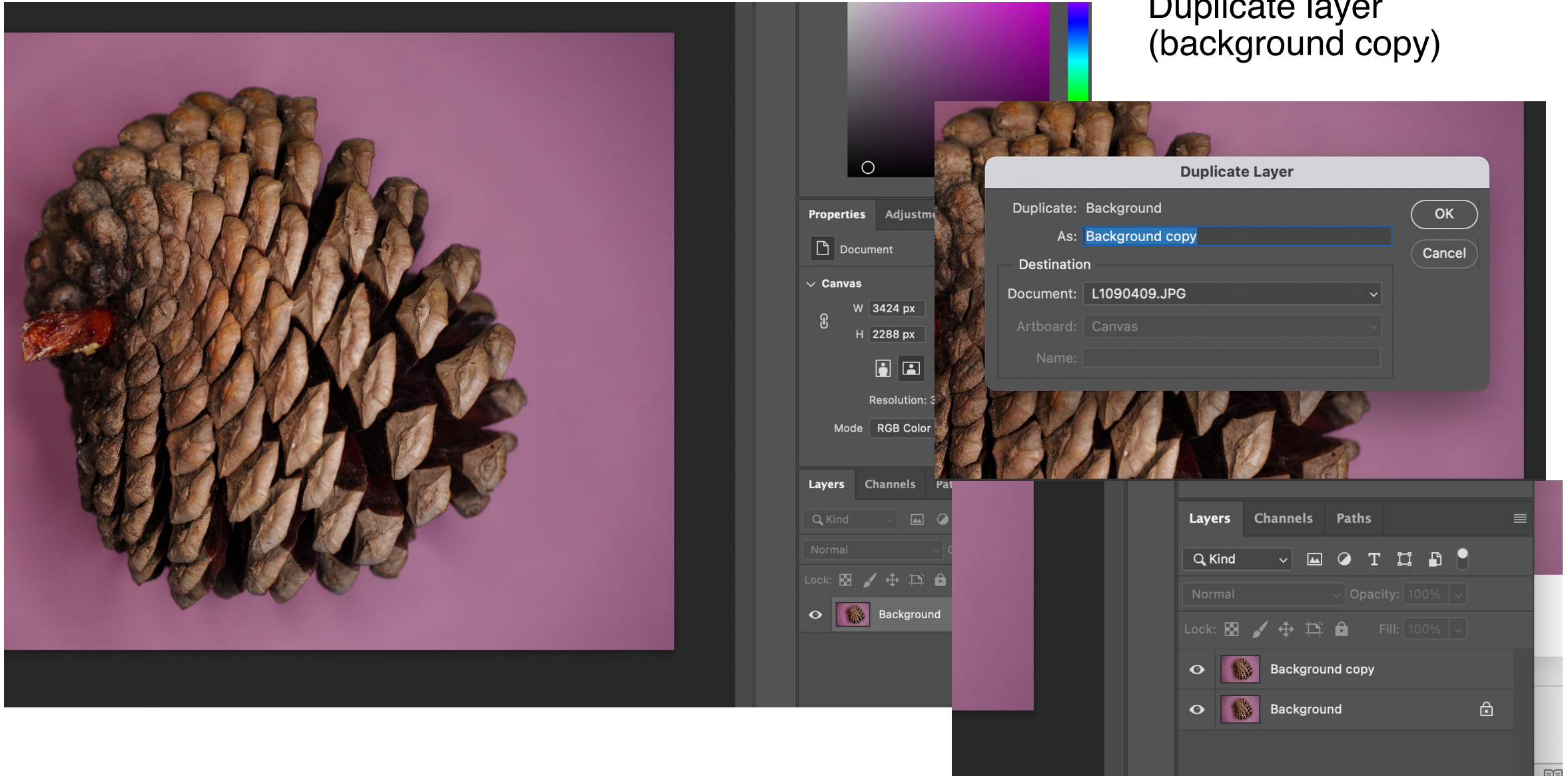


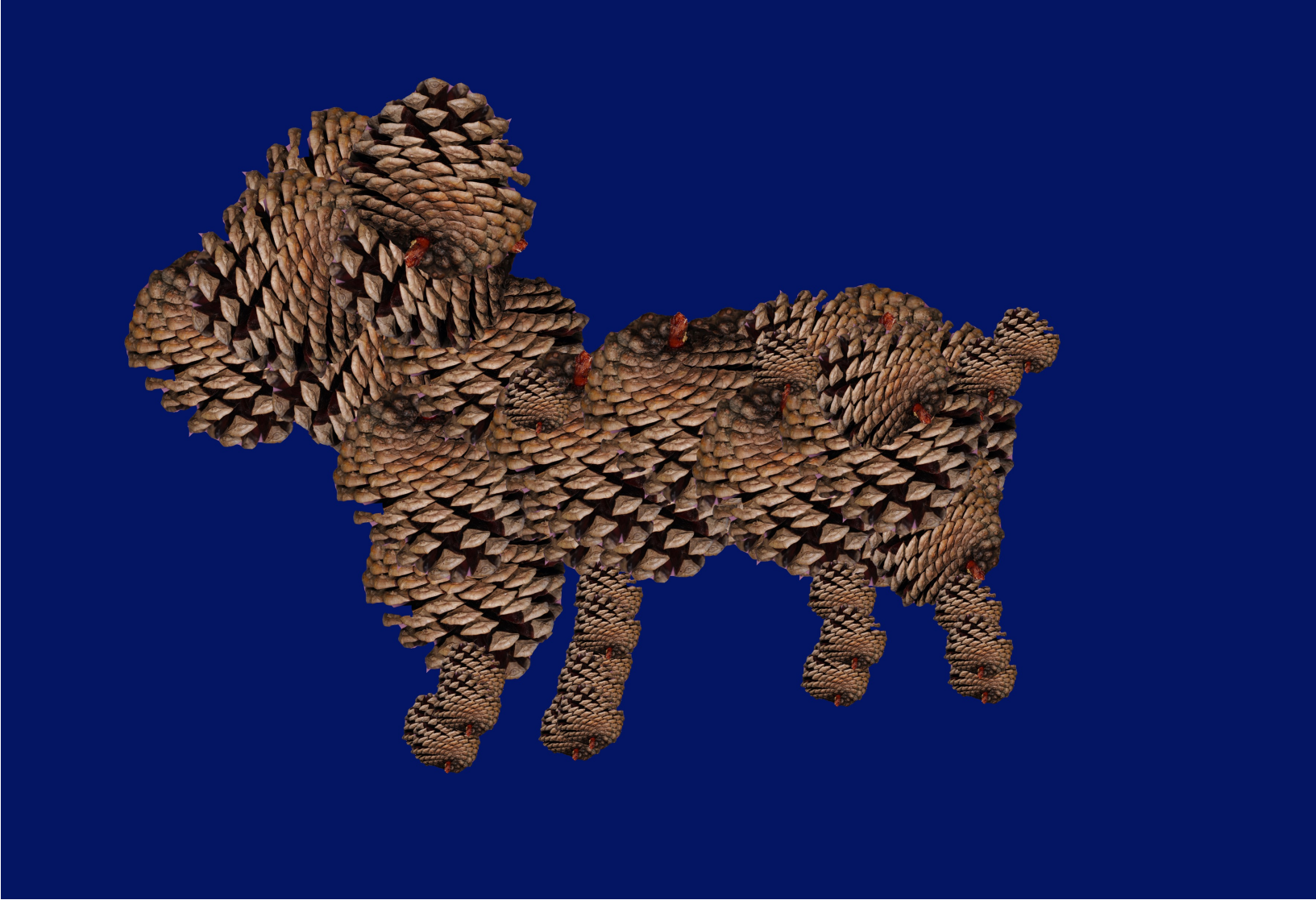
Veronika Lukasova
From series *I did not follow instructions*, 2023



MAKING a digital collage / Step 1.

Open the image and Duplicate layer (background copy)





A GUIDE FOR CREATIVE CRITICISM

**Be fully present
Participate
Ask Questions
Listen**

**Agree to Disagree
Allow for
Emotions
Be Specific
Be Open-Minded
Be Honest**

SMALL WORLD

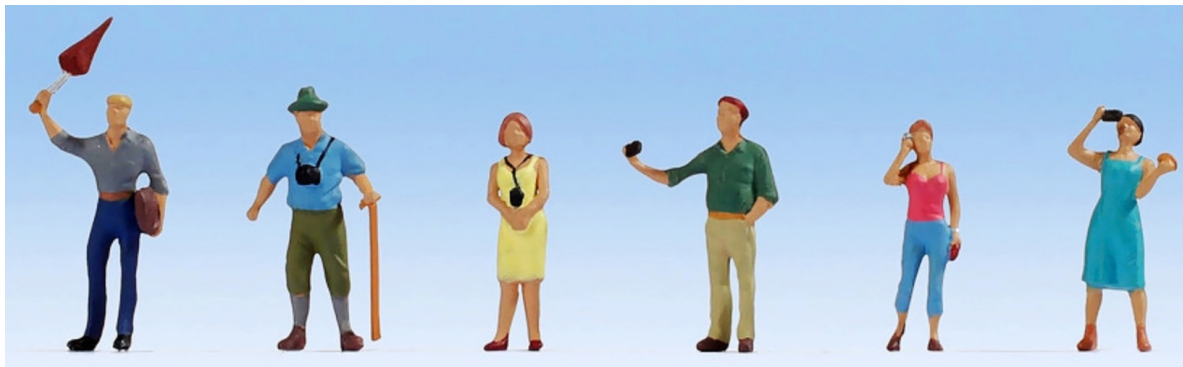
Matthew Stern



<https://www.youtube.com/watch?v=5WmxrO37lho>

SMALL WORLD

Our mini models



SMALL WORLD

How to do it? Chris Hau has some tips



<https://www.youtube.com/watch?v=S4pNVxiq-Rg>

SMALL WORLD

How to do it?

- ☞ think of a simple scene you can achieve today as your assignment**
- ☞ you can evolve the scene once you have the basic set up**
- ☞ you will need glue or tape to hold the mini figures in place**
- ☞ you should light your scene with one of multiple sources - phone light(s) is ideal**
- ☞ you can also work in our alternate studio should you require a solid background**
- ☞ work solo or with a partner / partners**

WATER LIGHT REFRACTION

What is it?



- ☞ **Water is denser than air**
- ☞ **When light travels through water, water changes its direction / it refracts the light**
- ☞ **This is when physics gets fun because we can experiment with what the refraction does to a stripy background or our faces**
- ☞ **It's also a very cool effect that can be used for portraiture and still life**



<https://www.pinterest.com/pin/447967494197862152/>



<https://www.pinterest.com/pin/446700856798385965/>



<https://www.pinterest.com/pin/226587424994086278/?mt=login>



<https://www.pinterest.com/pin/646266615294304299/?mt=login>

WATER LIGHT REFRACTION

Magic guide



https://www.youtube.com/watch?v=tVtg_YJ0Bbo

WATER LIGHT REFRACTION

The expert's guide



At 4:30

https://www.youtube.com/watch?v=_ufRXSRo2-4

VV034
PHOTOGRAPHY
Special effects
Session 3

ASSIGNMENT 1
REFRACTION OF LIGHT
THROUGH WATER
STUDIO work in groups

Experiment with how light refracts through water – create still life using strong background and you can also experiment with a portraiture.

Submit 3-5 jpgs

FOLDER: 03-14-2023 LIGHT_REFRACTION

SIZE: under 5MB

TITLE: Last name_First
name_lightrefraction_VV034_Date
(mo/day/year)_number of the photo in the
sequence



VV034
PHOTOGRAPHY
Special effects
Session 3

ASSIGNMENT 2
SMALL WORLD
On location work in groups/solo

Create a scene in or around FIMU or alternative studio with your mini figures keeping scale in mind for most convincing effect.
DON'T FORGET TO TAKE A PHOTO OF THE SET UP. Pls submit with the results.

Submit 3-5 jpgs

FOLDER: 03-14-2023 SMALL_WORLD

SIZE: under 5MB

TITLE: Last name_First
name_smallworld_VV034_Date
(mo/day/year)_number of the photo in the
sequence



<https://www.youtube.com/watch?v=iZE8h7GMBhg>

**This presentation has
been created as a study
resource to support
students of VV034
Photography module at
FIMU.**

**Distribution or other
use is prohibited**

**Copyright:
Veronika
Lukášová, PhD.,
2023**