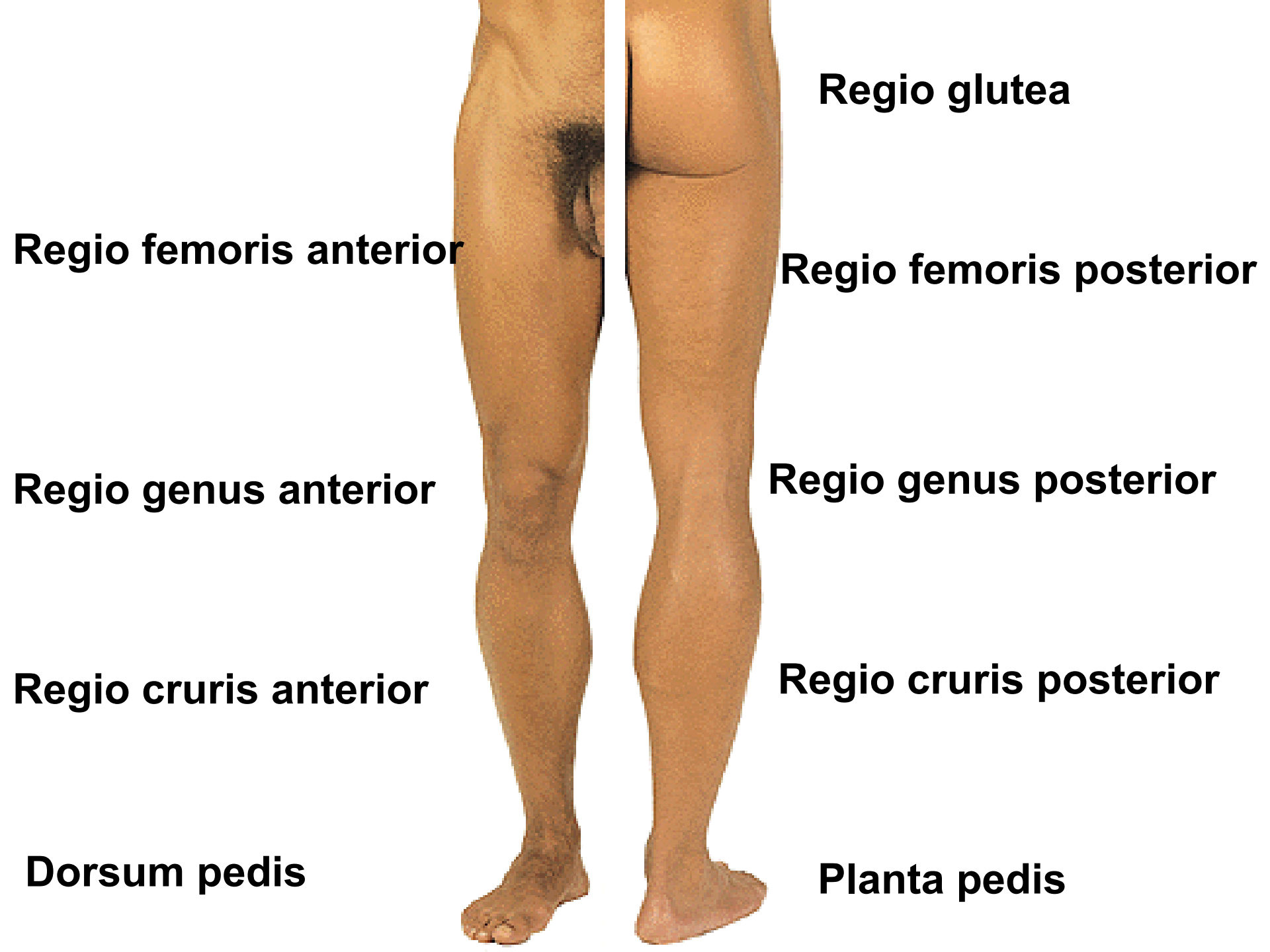


Topografie dolní končtiny



Regio glutea

Regio femoris anterior

Regio femoris posterior

Regio genus anterior

Regio genus posterior

Regio cruris anterior

Regio cruris posterior

Dorsum pedis

Planta pedis

REGIO GLUTEA

Kůže

Podkoží

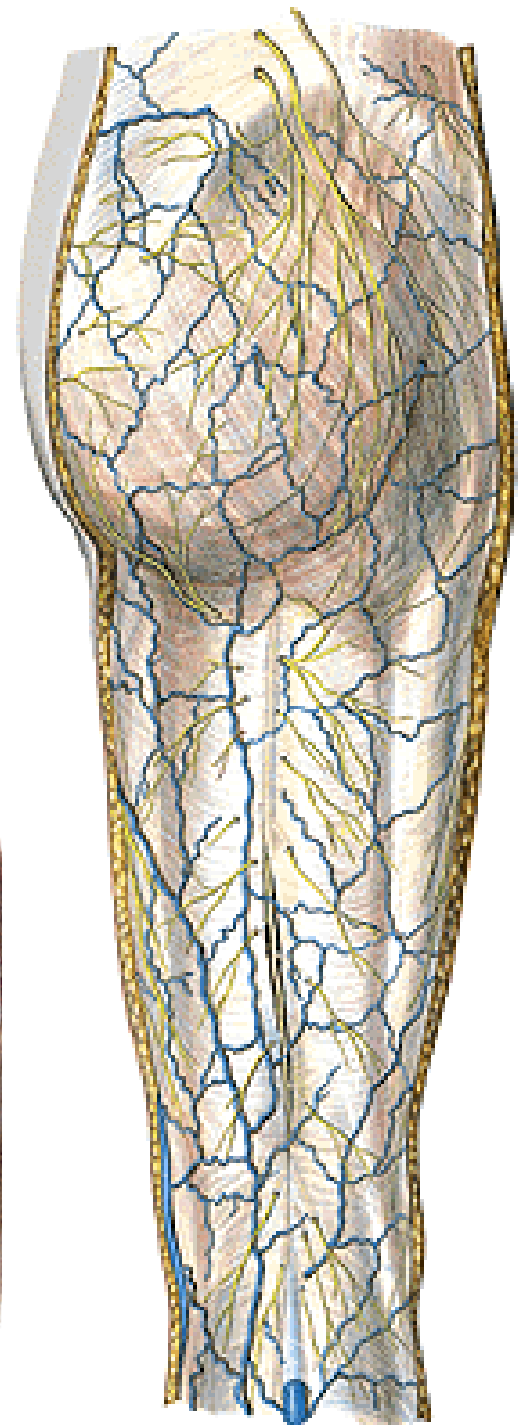
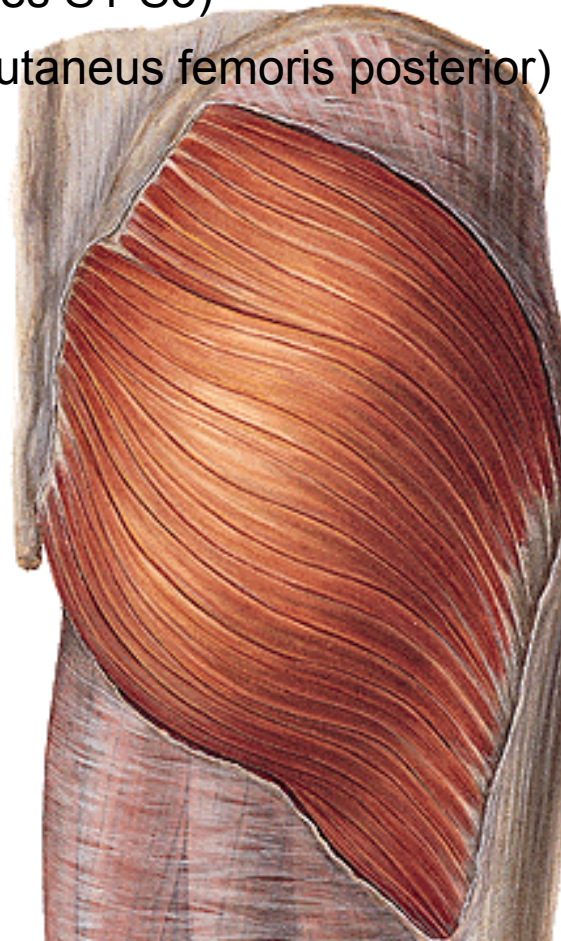
Nn. clunium superiores (rr. dorsales L1-L3)

Nn. clunium medii (rr. dorsales S1-S3)

Nn. clunium inferiores (n. cutaneus femoris posterior)

Fascia glutea

M. gluteus maximus



M. gluteus medius et minimus

M. piriformis

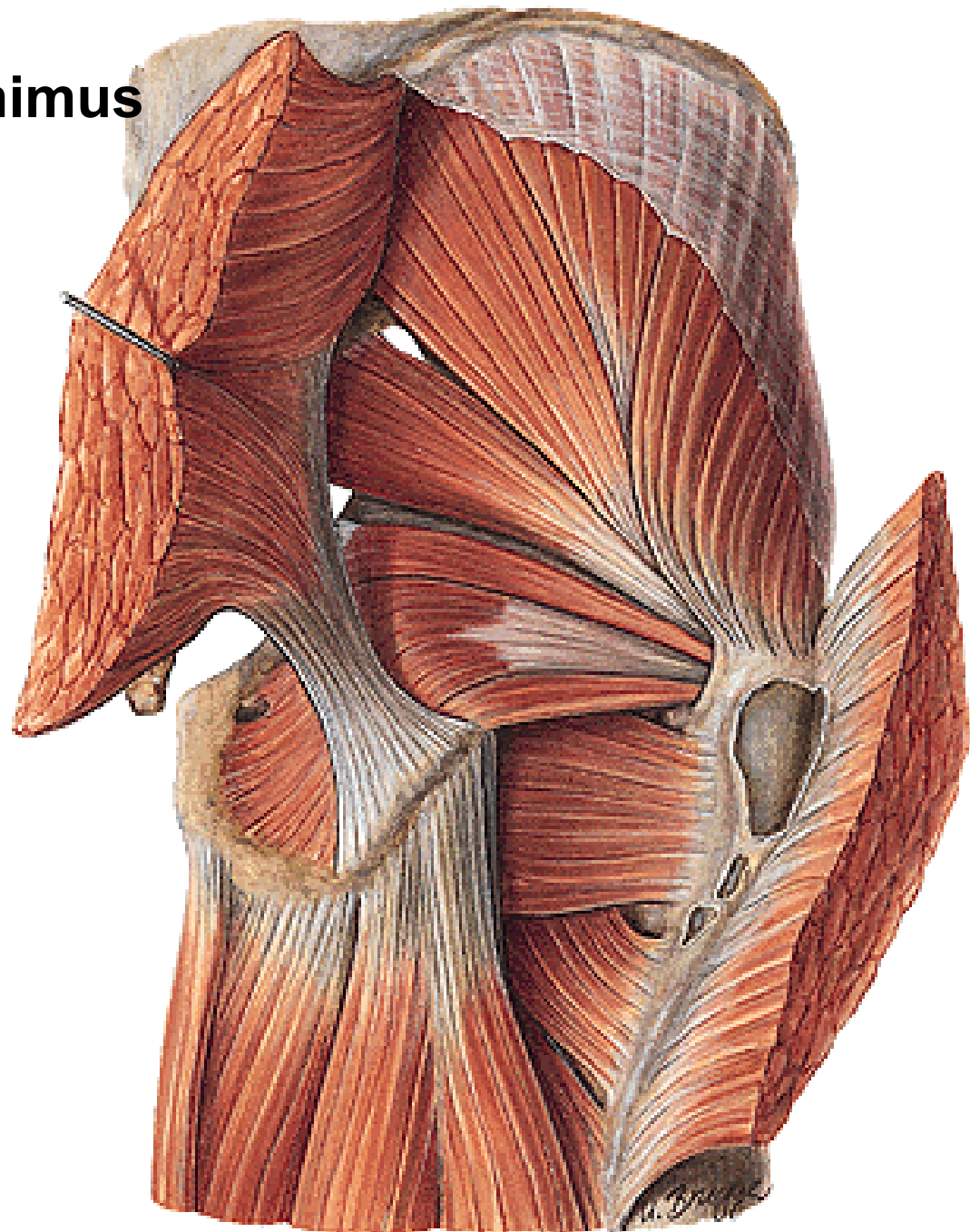
Foramen suprapiriforme

Foramen infrapiriforme

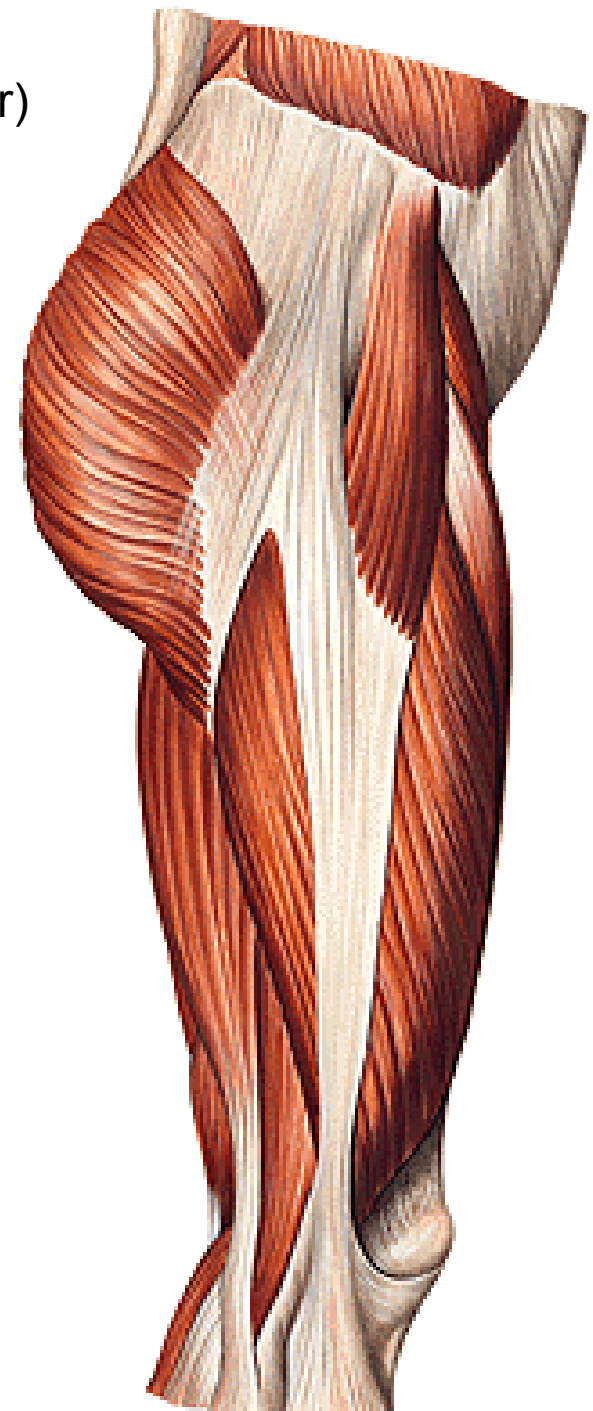
M. obturatorius internus

M. gemellus superior et inferior

M. quadratus femoris



M. tensor fasciae latae (n. gluteus superior)
Tractus iliotibialis



Ligamentum sacrospinale

Lig. sacrotuberale

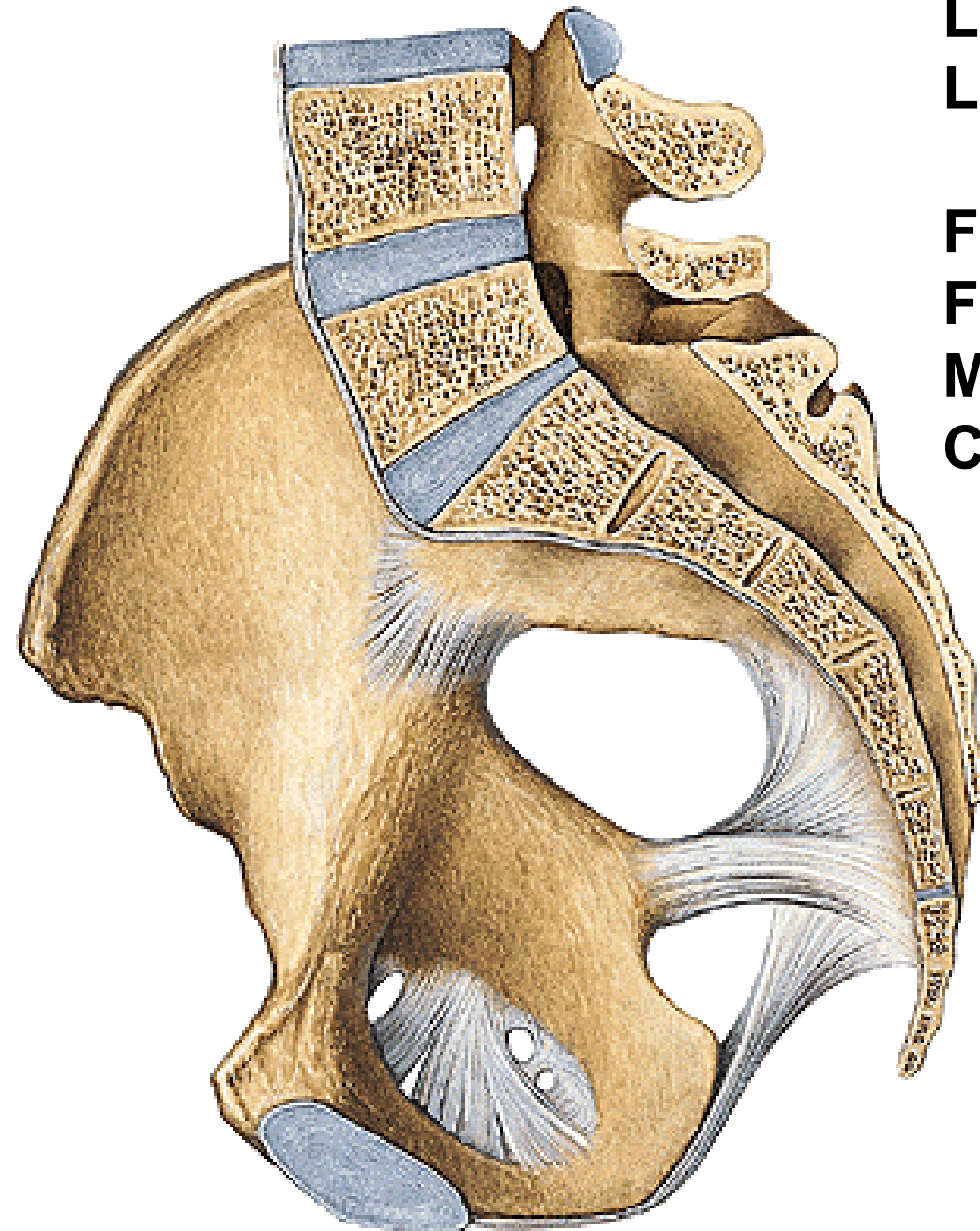


Foramen ischiadicum majus

Foramen ischiadicum minus

Membrana obturatoria

Canalis obturatorius



Foramen suprapiriforme:

Nn. et vasa glutea superiora – a. iliaca interna)

Foramen infrapiriforme:

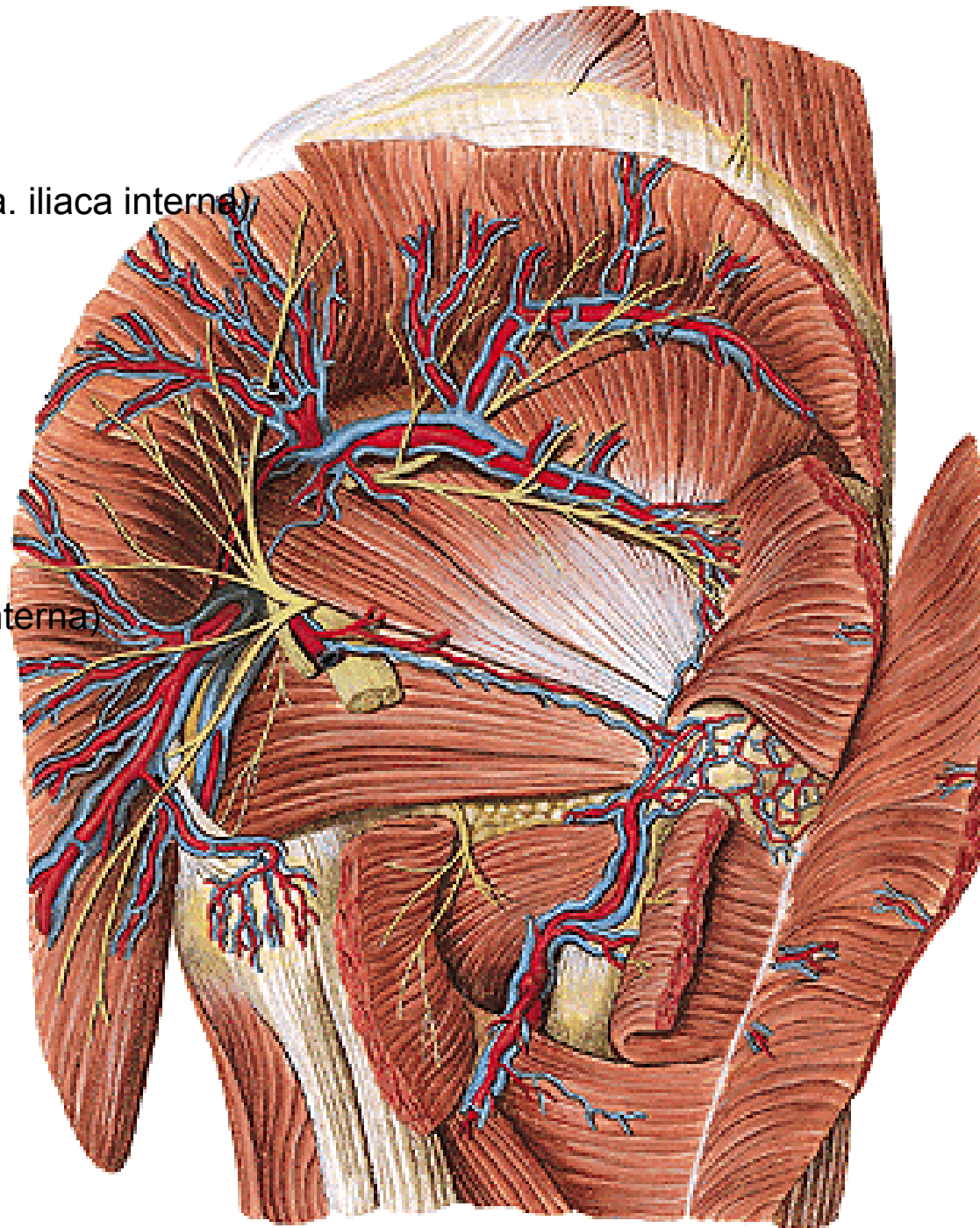
Nn. et vasa glutea inferiora

N. ischiadicus

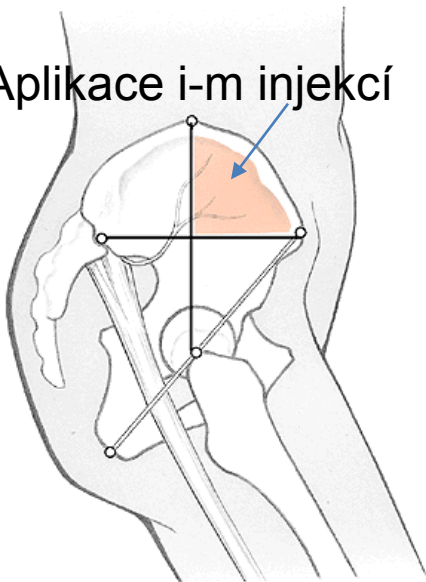
N. cutaneus femoris post.

N. pudendus

Vasa pudenda interna (a. iliaca interna)



Aplikace i-m injekcí



Canalis inguinalis (tříselný kanál)

Přední stěna: aponeuróza *m. obliquus ext. abdominis*

Horní stěna: *m. obliquus internus abdominis*
a *m. transversus abdominis*

Dolní stěna: *lig. inguinale*

Zadní stěna: *fascia transversalis*

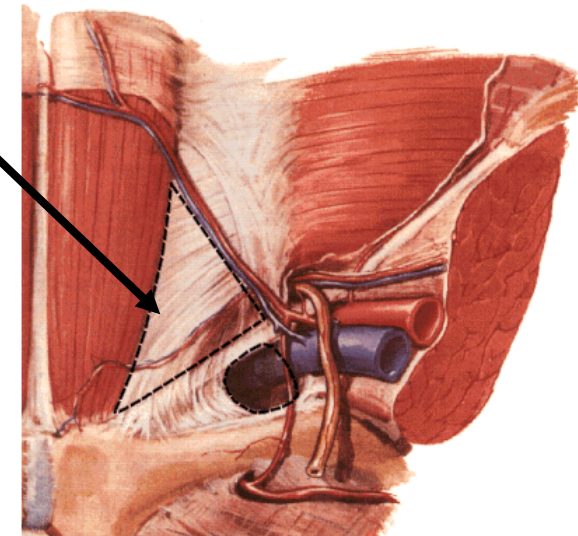
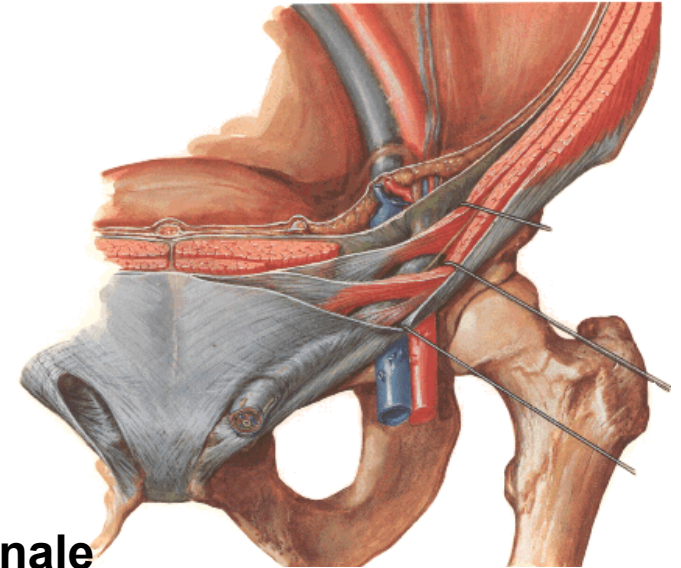
Anulus inguinalis superficialis et profundus
Lig. interfoveolare, falx inguinalis, trigonum inguinale
(Hesselbachi)

Obsah:

oblý vaz děložní (*lig. teres uteri*)
semenný provazec (*funiculus spermaticus*)

Pod lig inguinale:

Lacuna musculorum, arcus iliopectineus, lacuna vasorum



Lacuna musculorum

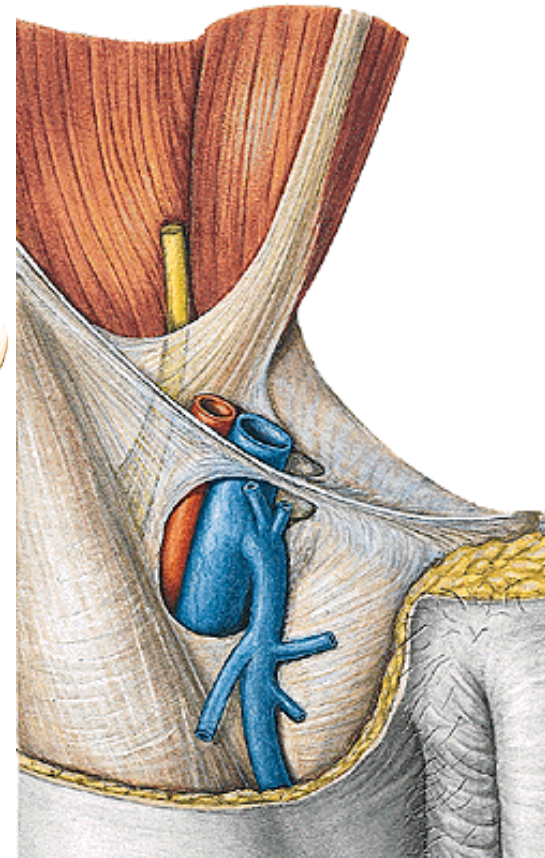
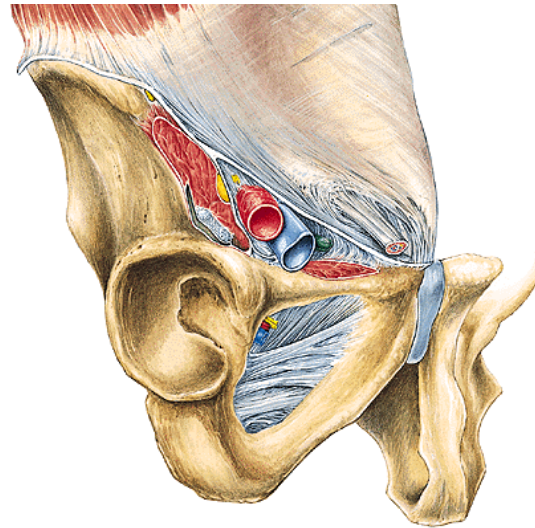
Lacuna vasorum

Arcus iliopectineus (fascia

Lig. inguinale

Anulus (canalis) femoralis

Nl. inguinalis profundus (Cloquetova uzlina, femorální kýly)



REGIO FEMORIS ANTERIOR

Kůže

Podkoží:

Rr. anteriores n. femoralis

N. cutaneus femoris lateralis

N. ilioinguinalis

N. genitofemoralis (r. femoralis)

N. obturatorius (r. cutaneus)

Fascia lata (hiatus saphenus)

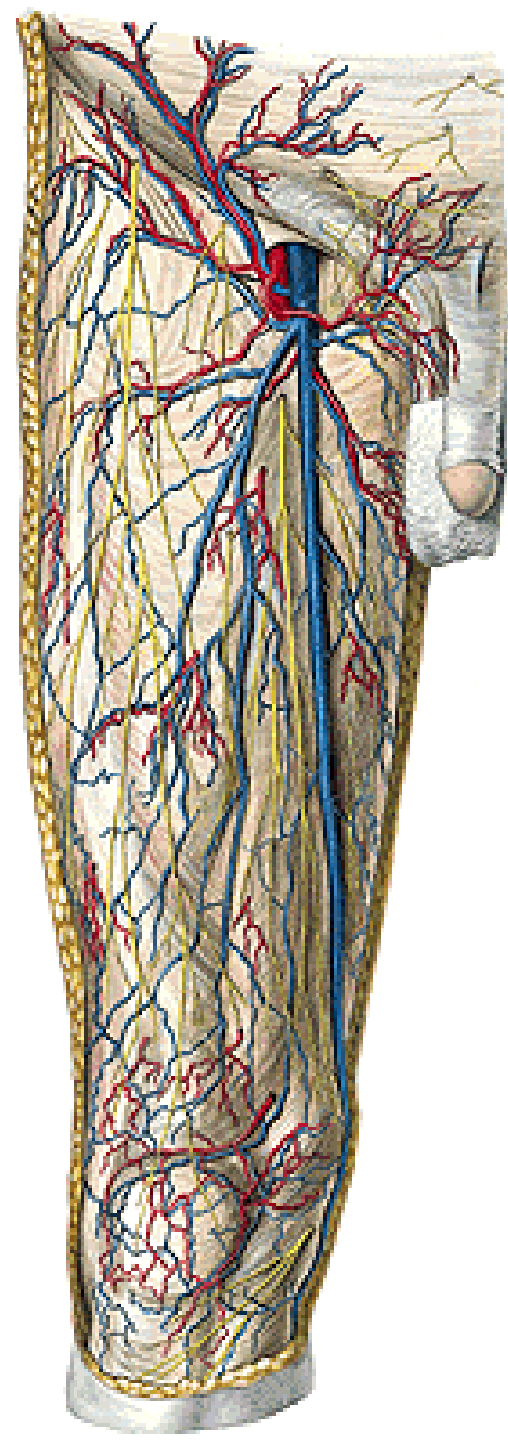
A. femoralis – a. epigastrica superficialis

a. circumflexa ilium superficialis

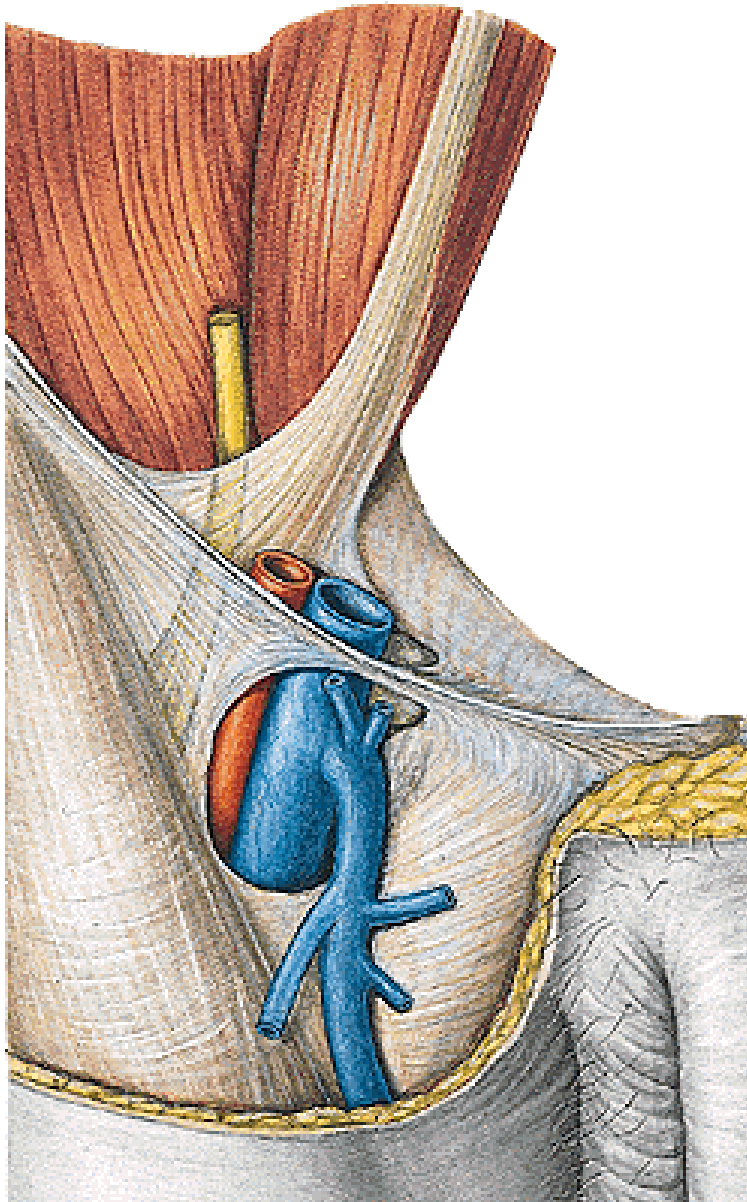
aa. pudendae externae

rr. scrotales (labiales) anteriores

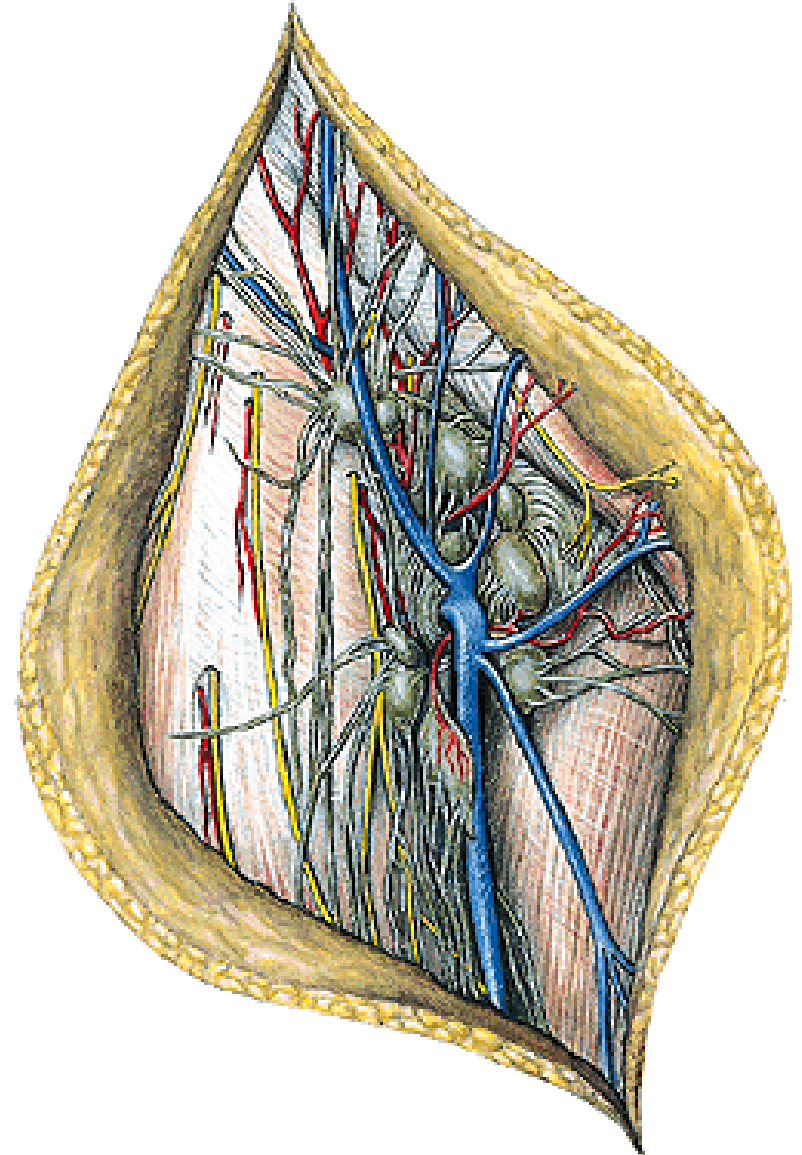
V. saphena magna



Hiatus saphenus



**Nodi lymphatici inguinales superficiales
nll. iliaci externi**



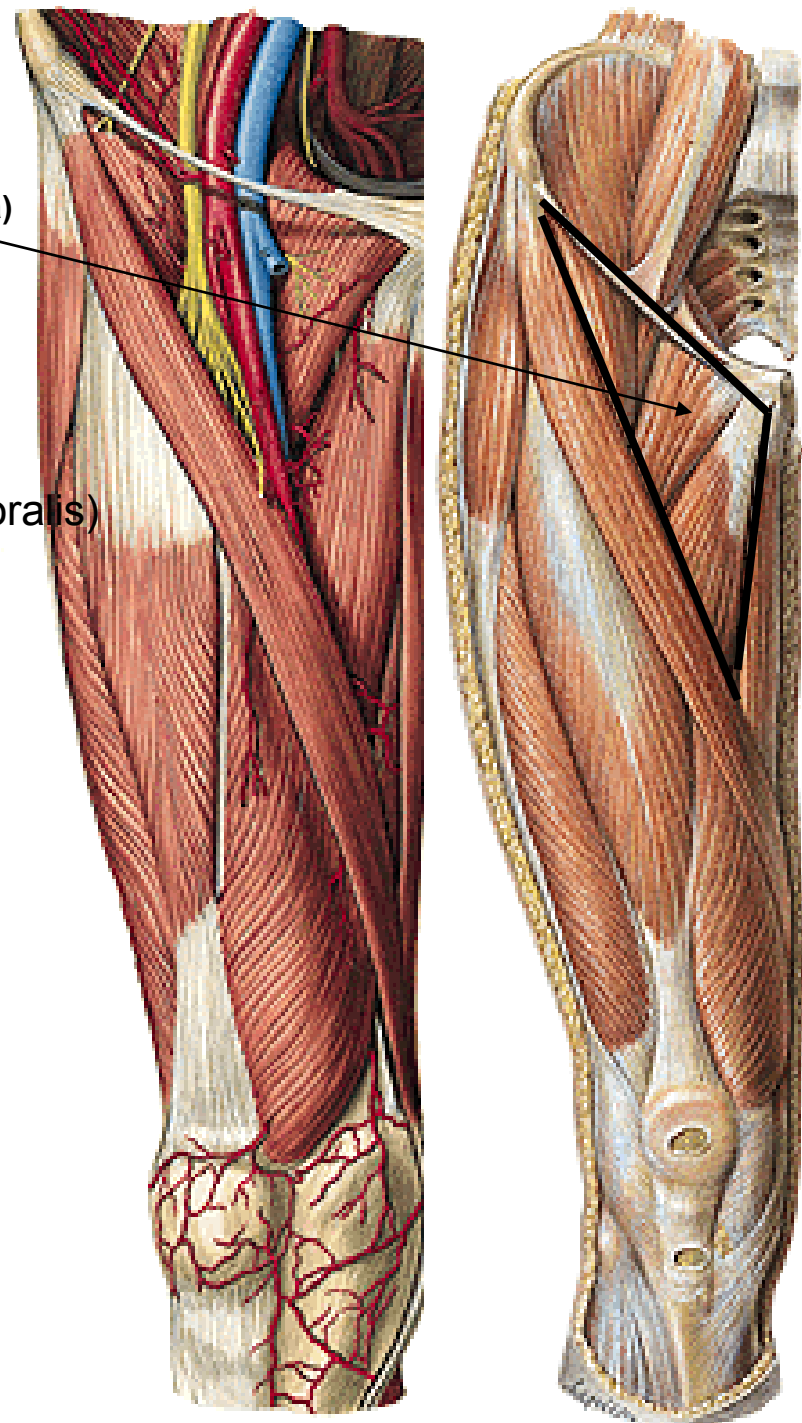
Trigonum femorale

A. et v. femoralis (pokračování a. iliaca externa)

N. femoralis

Fossa iliopectinea

A. et v. femoralis profunda (a. femoralis)



REGIO FEMORIS ANTERIOR

Přední skupina
svalů stehenních

M. iliopsoas

M. iliacus

M. psoas major

(M. psoas minor)

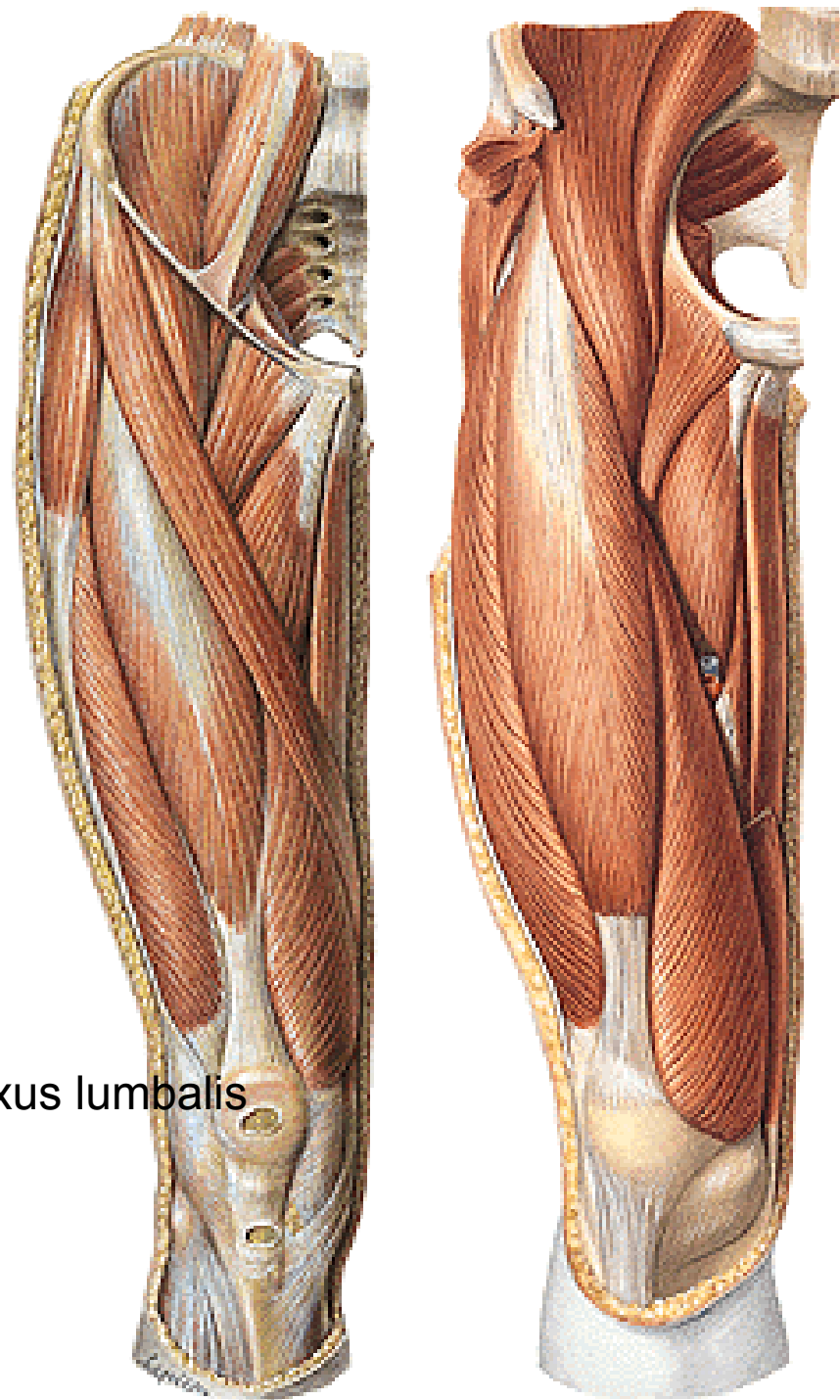
M. sartorius

M. quadriceps femoris:

M. rectus femoris

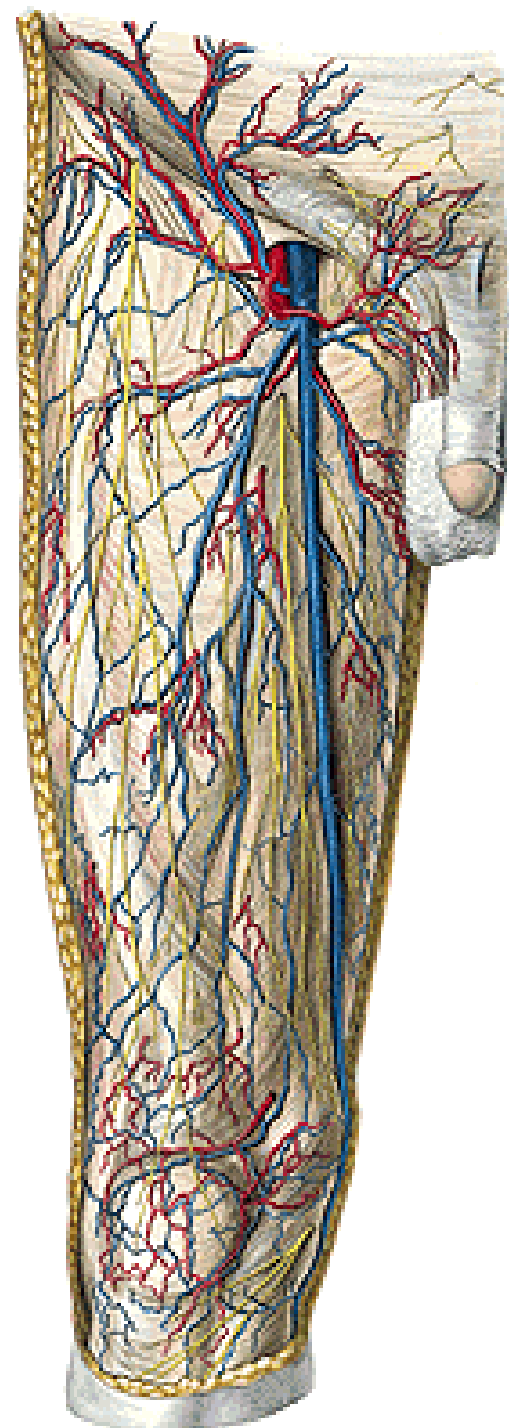
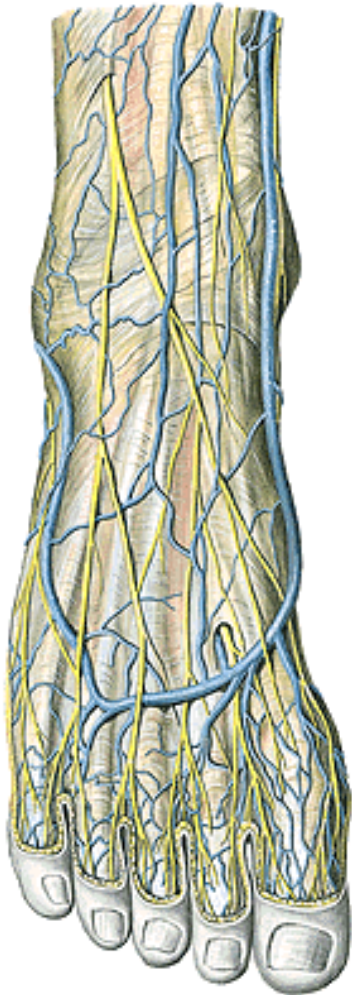
M. vastus med., lat., intermedius

Inervace celé přední skupiny – n. femoralis, plexus lumbalis



REGIO FEMORIS MEDIALIS

kůže
podkoží
v. saphena magna
kožní větve z n. obturatorius



REGIO FEMORIS MEDIALIS

Fascia lata s hiatus saphenus

Inervace svalů z n. obturatorius

r. anterior
r. posterior

A. et v. obturatoria (z a. iliaca interna)

r. anterior
r. posterior
r. acetabularis (pro art. coxae)

M. pectineus (+n. femoralis)

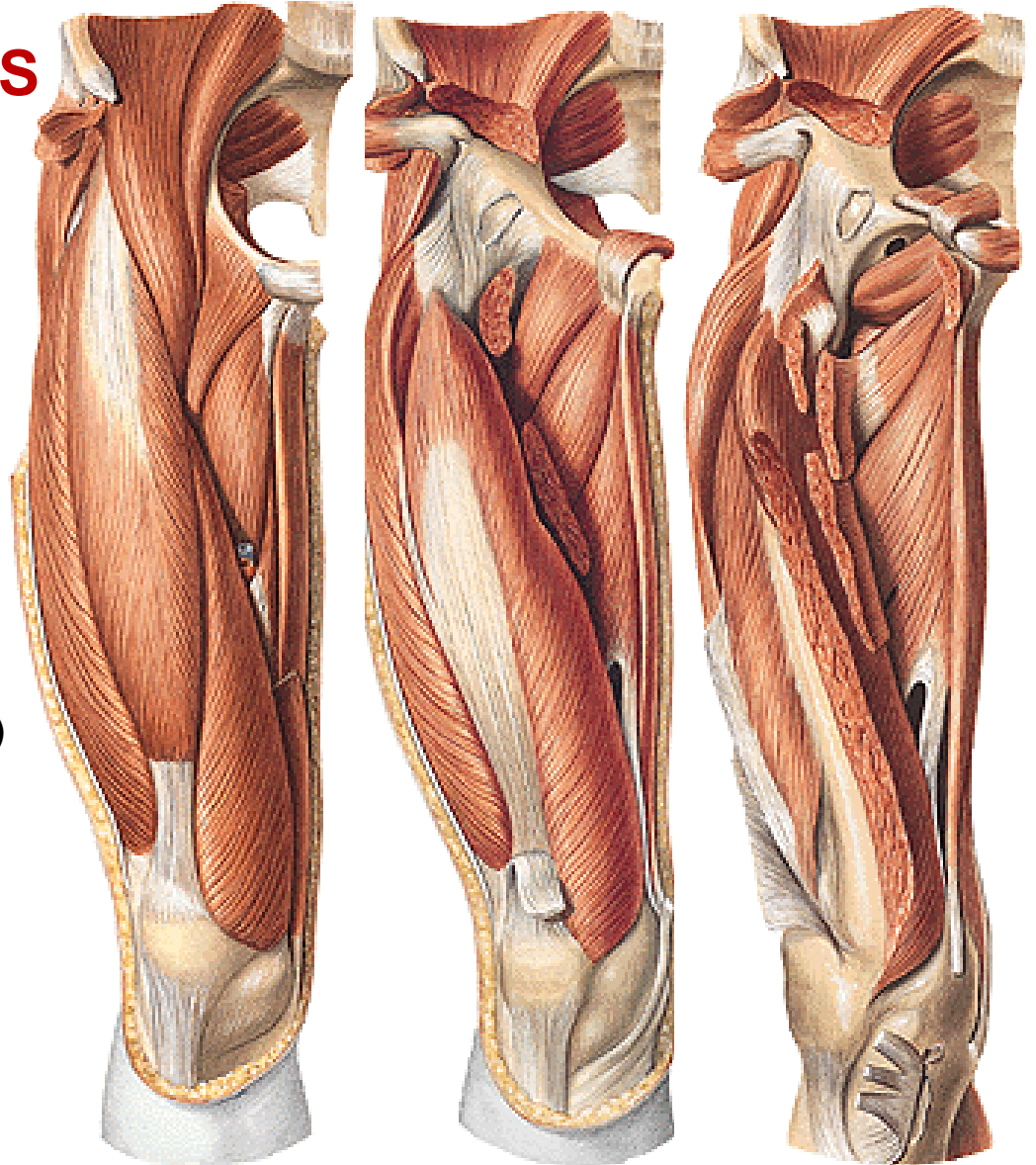
M. adductor longus

M. adductor brevis

M. adductor magnus (+n. ischiadicus)

M. obturatorius externus

M. gracilis

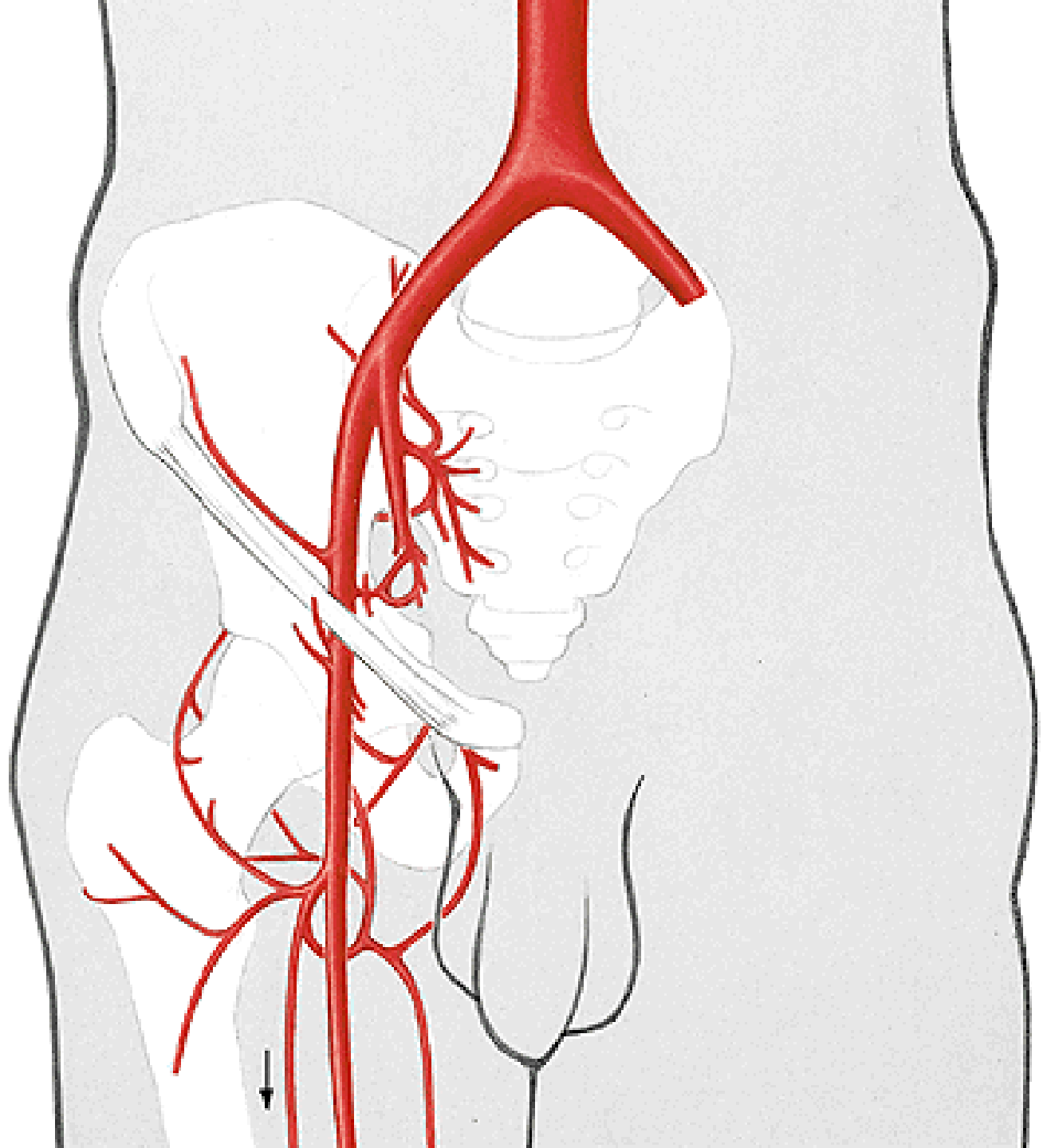




Pes anserinus

m. sartorius, m. gracilis a m. semitendinosus

A. iliaca externa
A. femoralis



A. femoralis

Rr. musculares

A. genus descendens

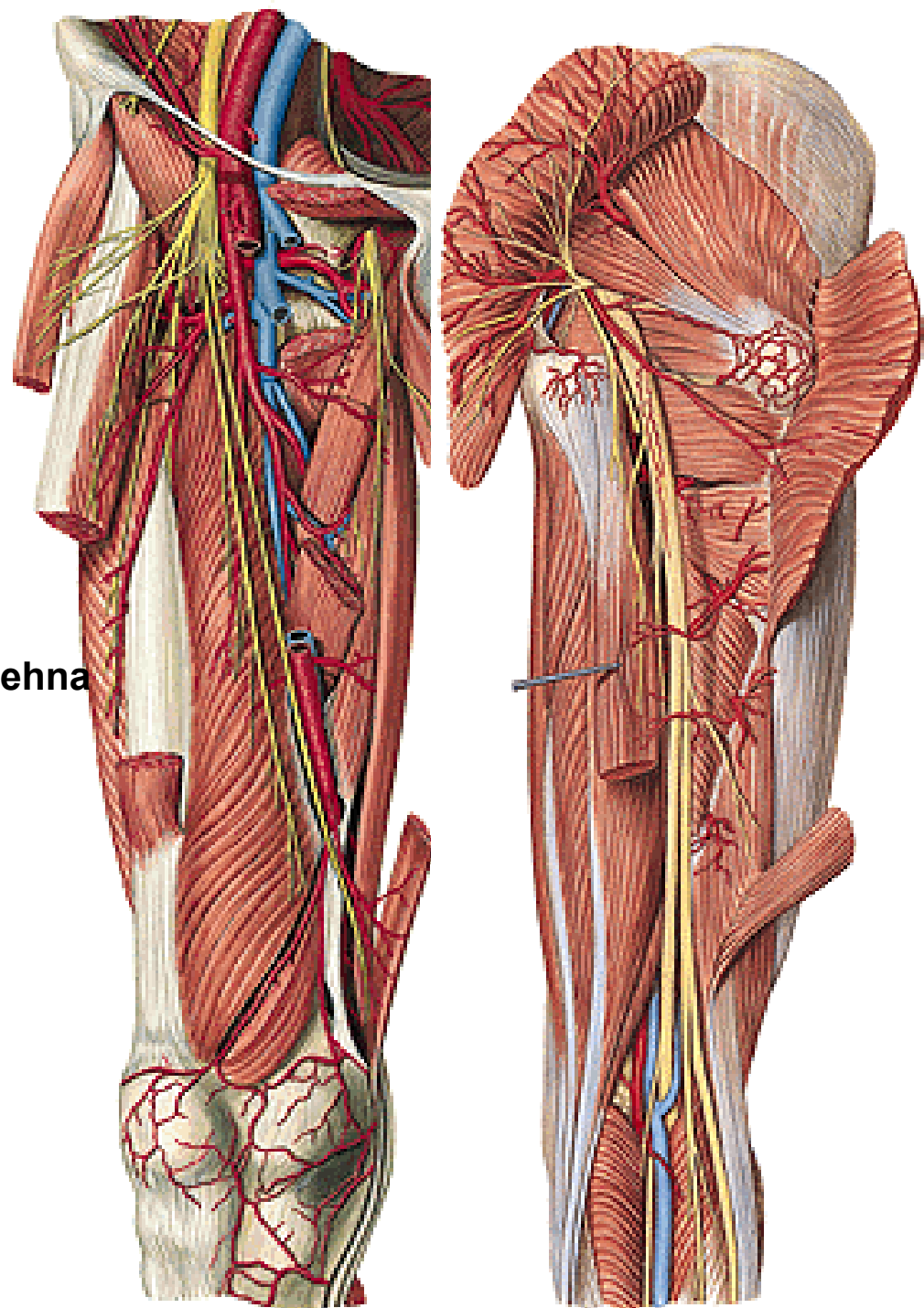
A. profunda femoris:

A. circumflexa femoris medialis

A. circumflexa femoris lateralis

Aa. perforantes pro zadní skupinu svalů stehna

A. perforans prima, secunda, tertia



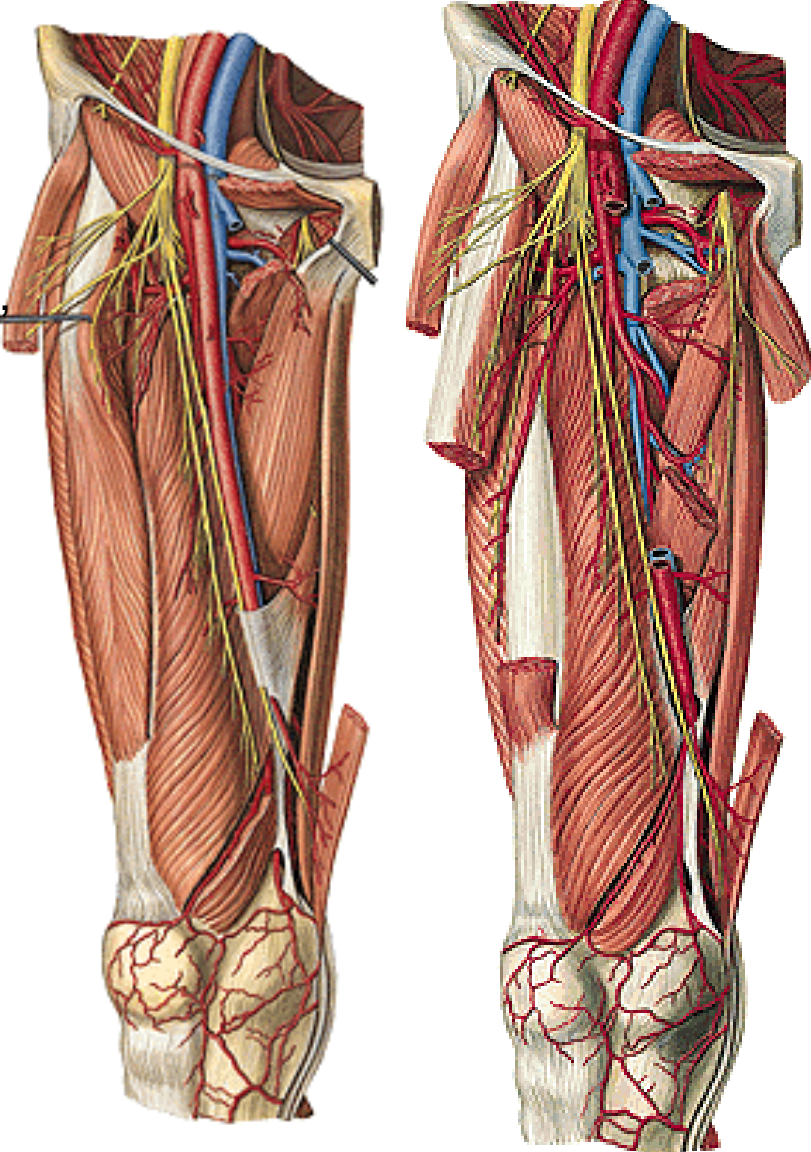
Canalis adductorius

(m. vastus medialis, m. adductor longus a magnus, lamina vastoadductoria)

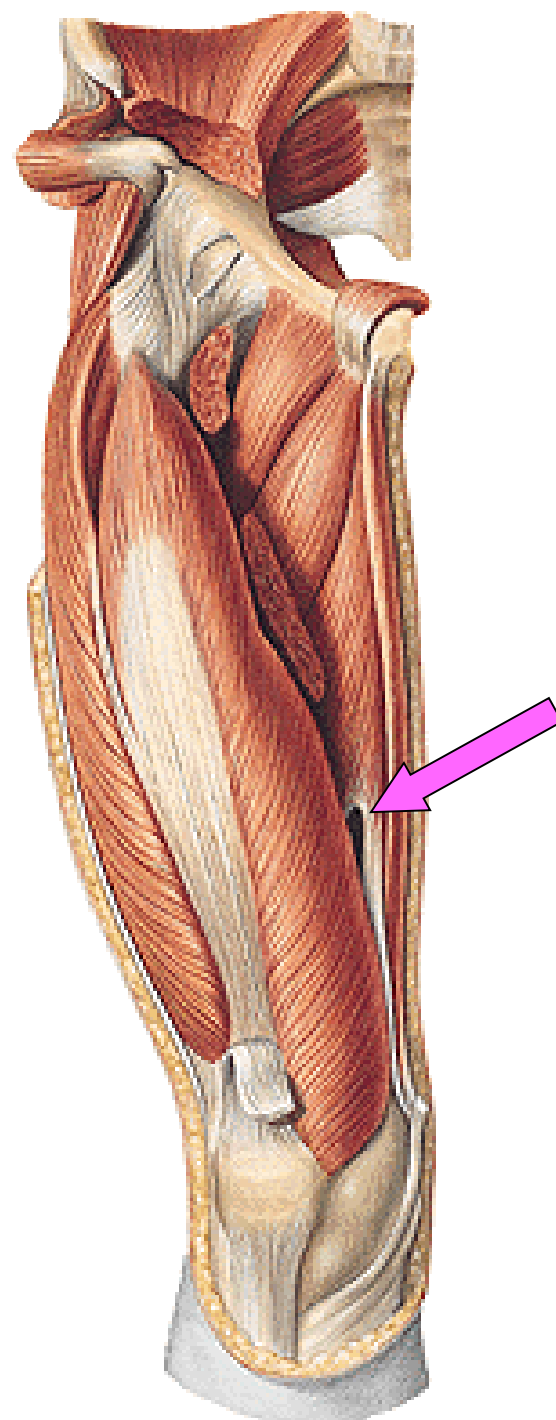
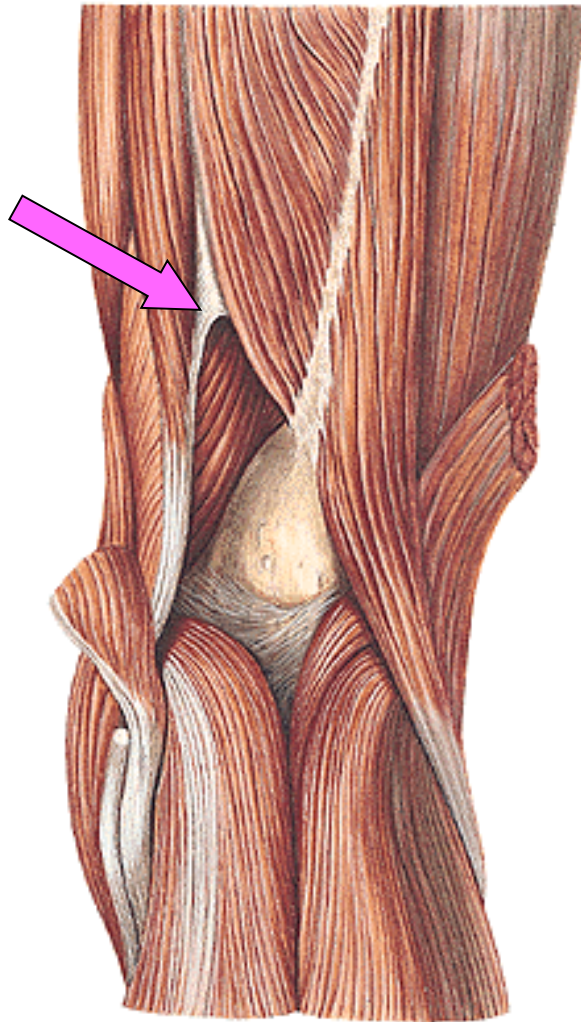
Hiatus tendineus/adductorius

N. saphenus (n. femoralis)

A. genus descendens (a. femoralis)



Hiatus tendineus/adductorius



REGIO FEMORIS POSTERIOR

N. cutaneus femoris post. (plexus sacralis)

V. femoropoplitea

Fascie

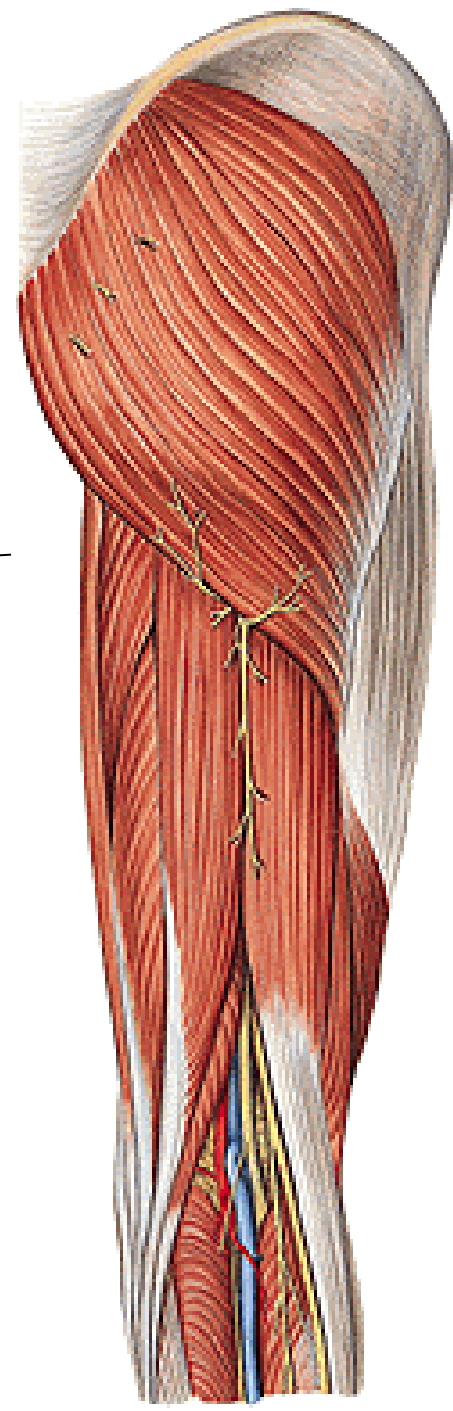
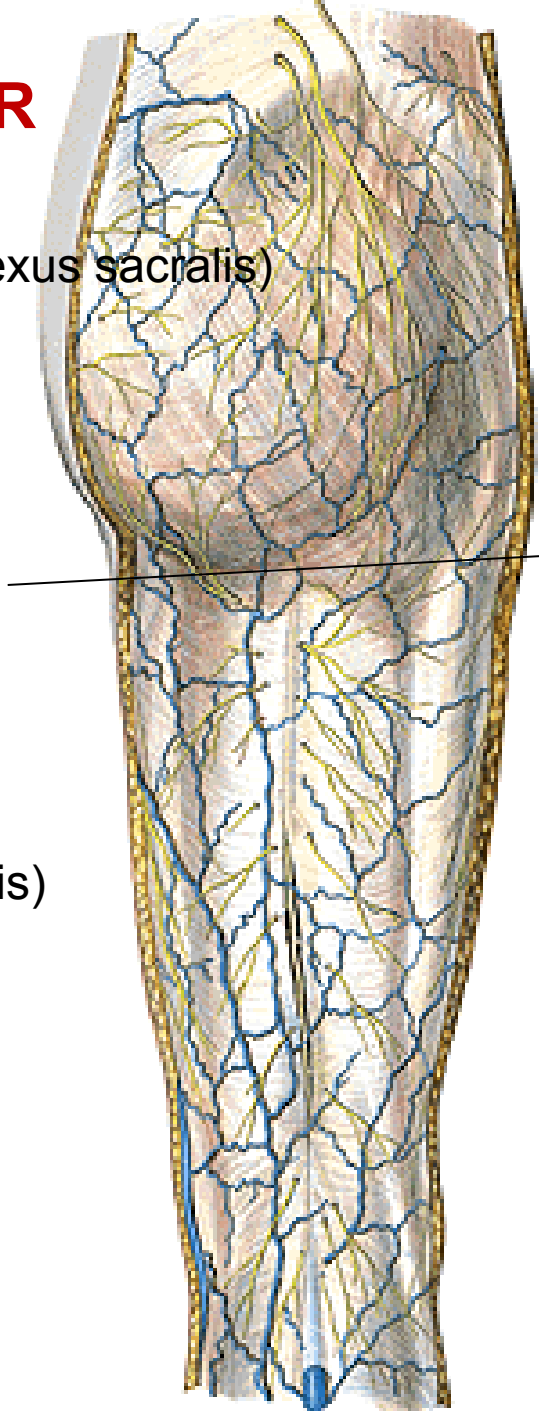
M. biceps femoris

M. semitendinosus

M. semimembranosus

(hamstringy)

Inervace: rr. musculares (plexus sacralis)



N. ischiadicus

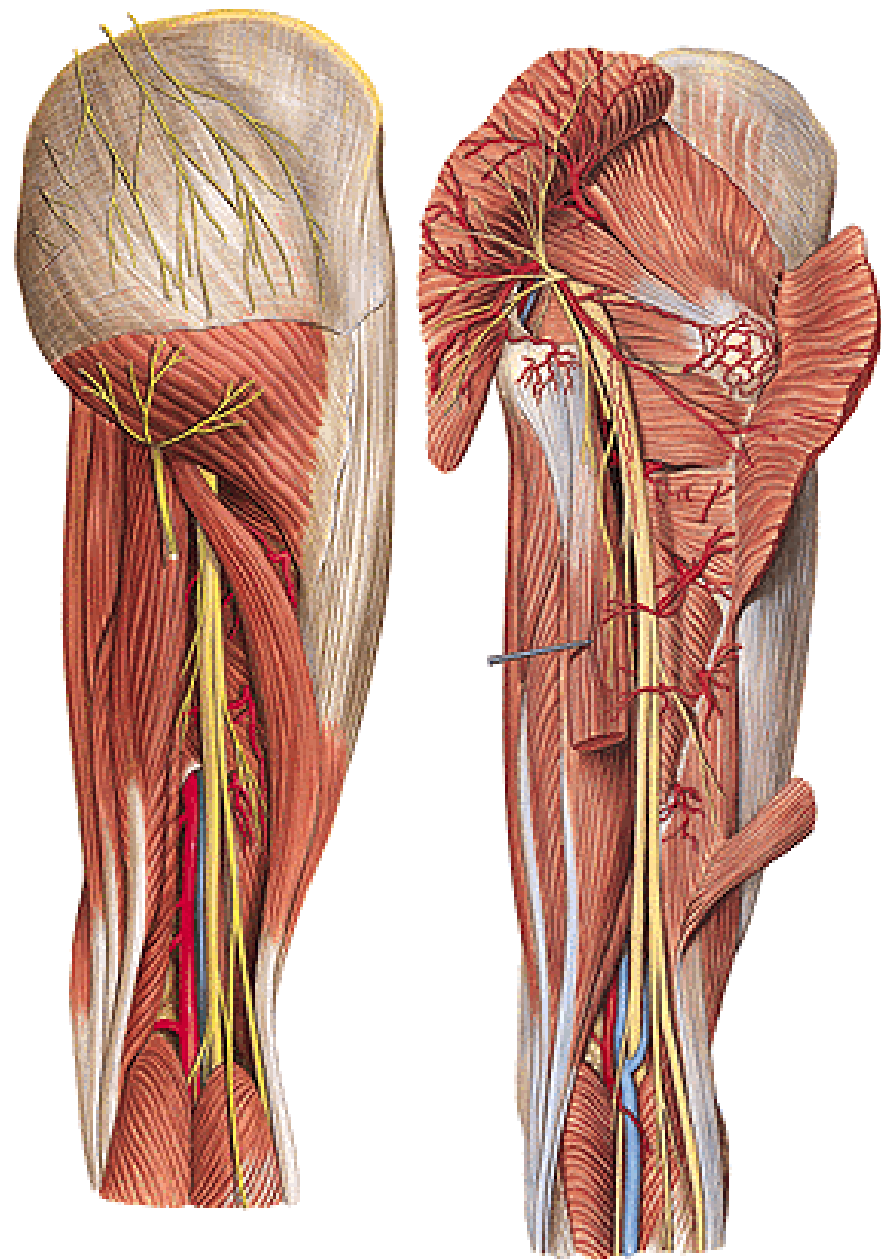
rr. musculares

konečné větve

n. tibialis

n. fibularis/peroneus communis

Aa. perforantes (z a. profunda femoris)



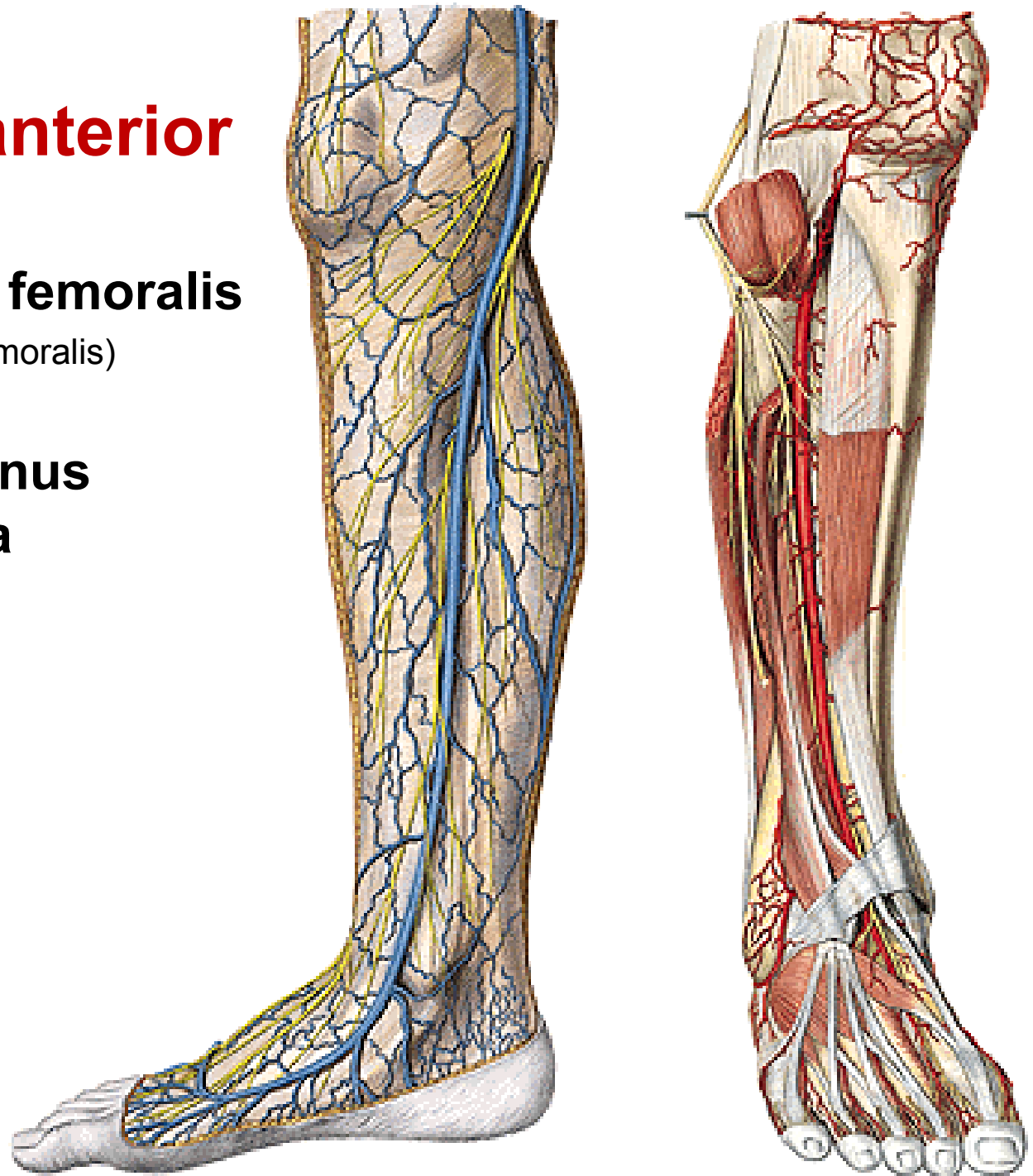
Regio genus anterior

Rr. cutanei ant. n. femoralis

R. infrapatellaris (n. femoralis)

Rete articulare genus

V. saphena magna





bursitis

- Bursa subcutanea prepatellaris**
- Bursa subcutanea infrapatellaris**
- Bursa infrapatellaris profunda**
- Bursa suprapatellaris**

REGIO GENUS POSTERIOR

Kůže a podkoží

N. cutaneus femoris posterior (plexus sacralis)

N. cutaneus surae lateralis (z n. fibularis communis)

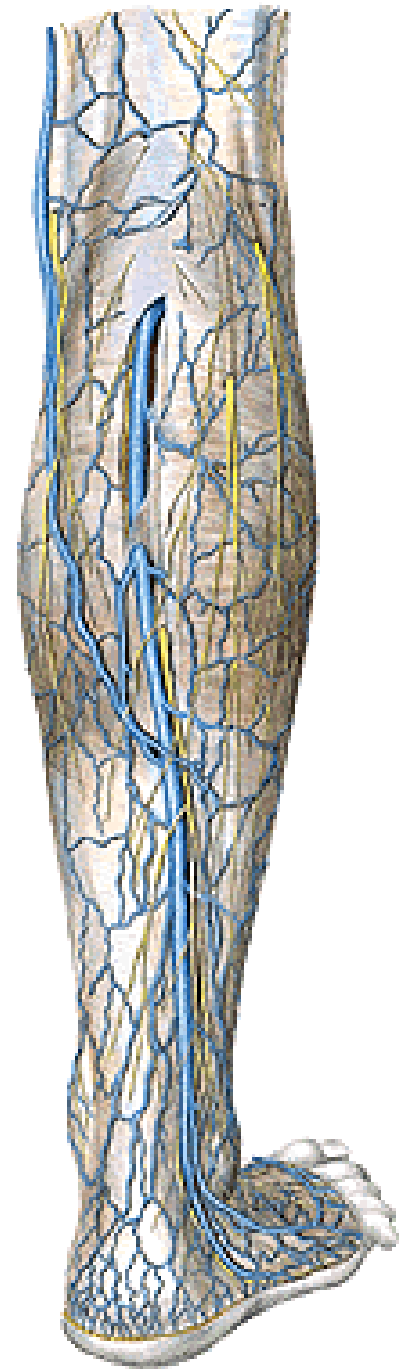
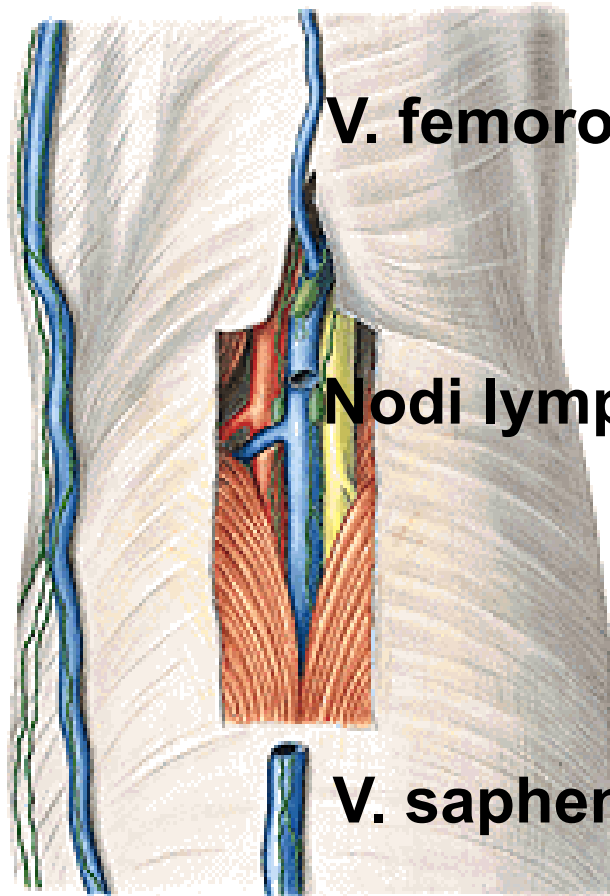
N. cutaneus surae medialis (z n. tibialis)

n. suralis

V. femoropoplitea

Nodi lymphatici poplitei

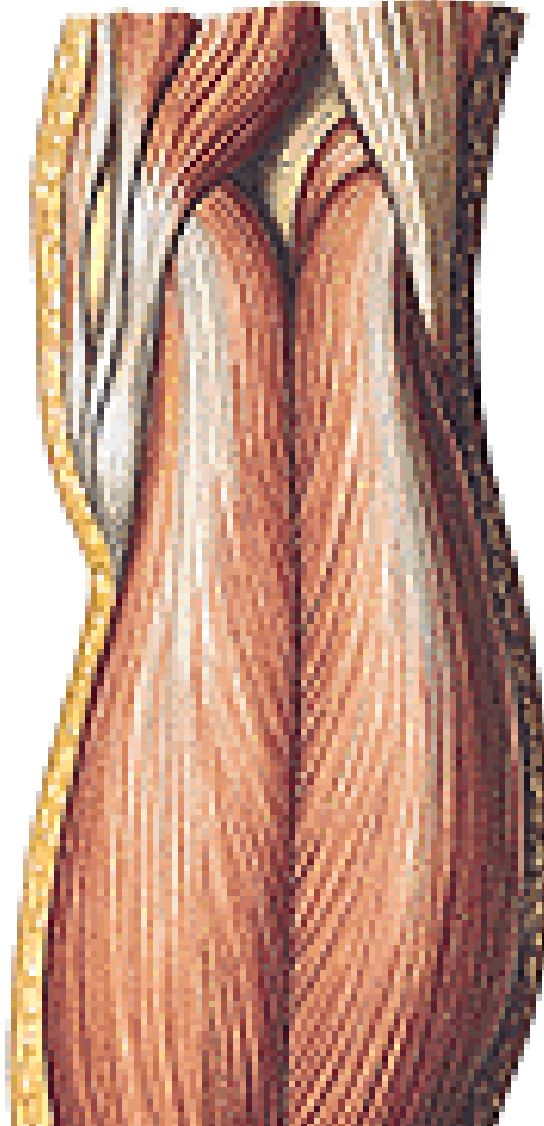
V. saphena parva



Fossa poplitea

(mm. gastrocnemii, m. biceps femoris, m. semitendinosus)

Spodina: facies poplitea femoris, m. popliteus



Fossa poplitea

Obsah:

A. poplitea (pokračování a. femoralis)

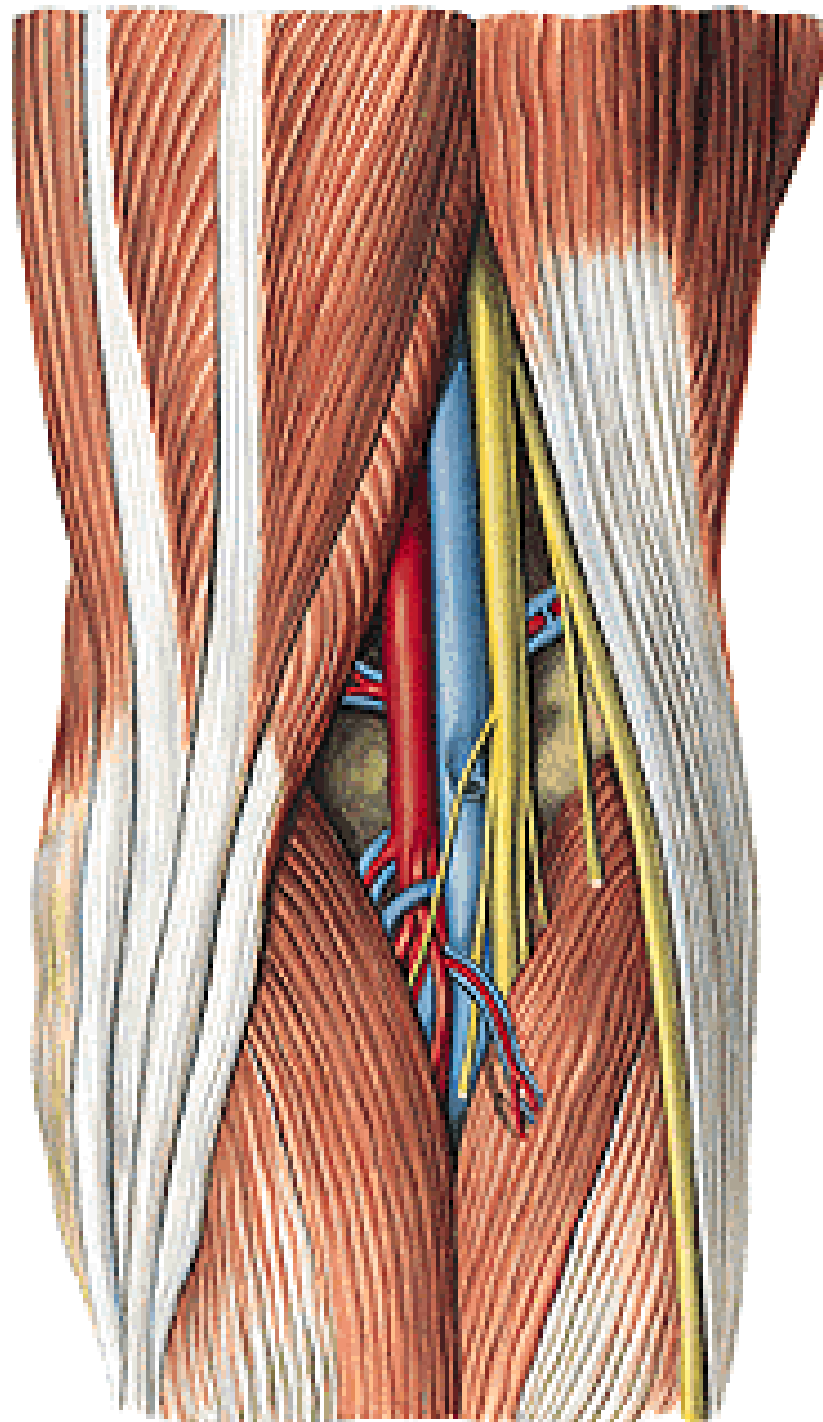
V. poplitea

N. tibialis

N. fibularis communis

nn. II. poplitei

v. saphena parva



N. tibialis

n. cutaneus surae medialis

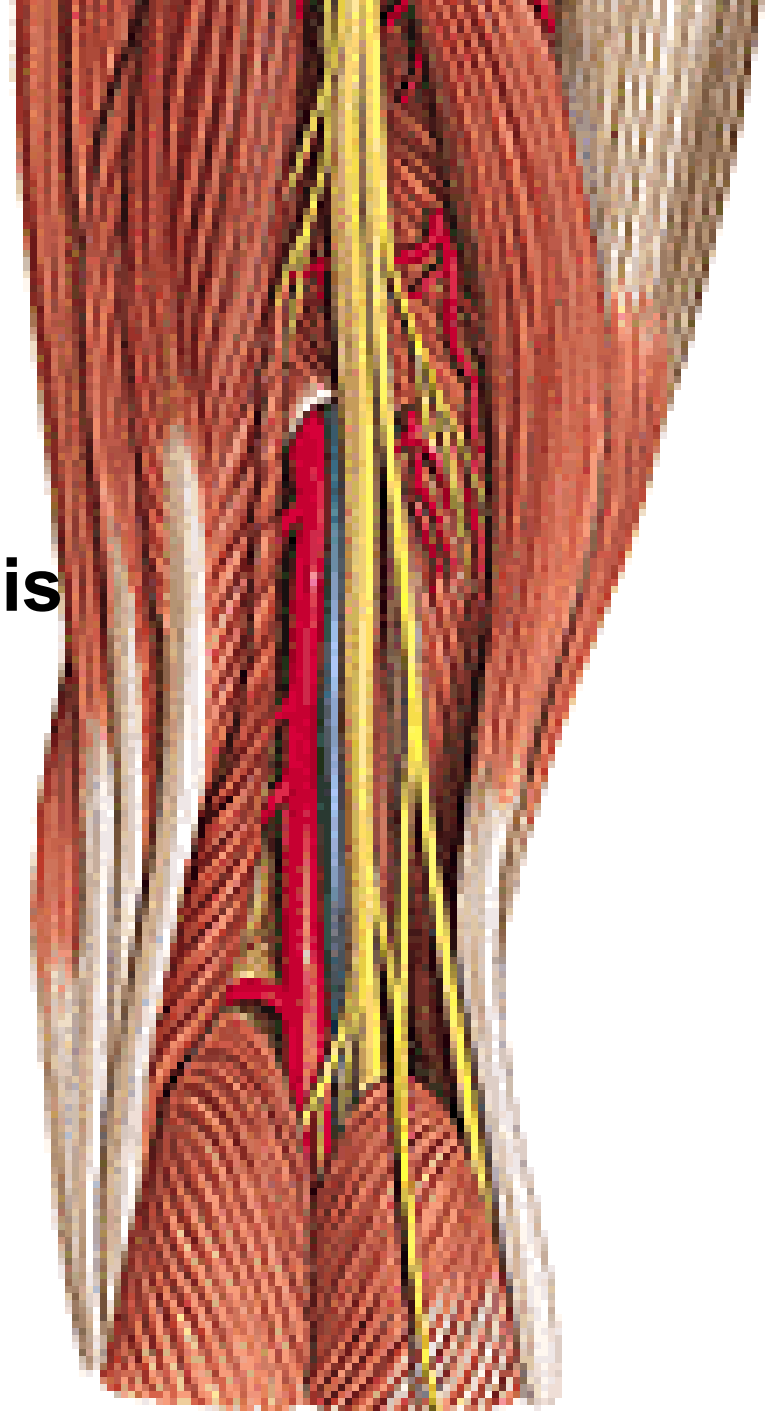
N. fibularis/peroneus communis

n. cutaneus surae lat.

r. communicans fibularis/peroneus



n. suralis



A. poplitea

aa. surales

a. superior medialis a lateralis genus

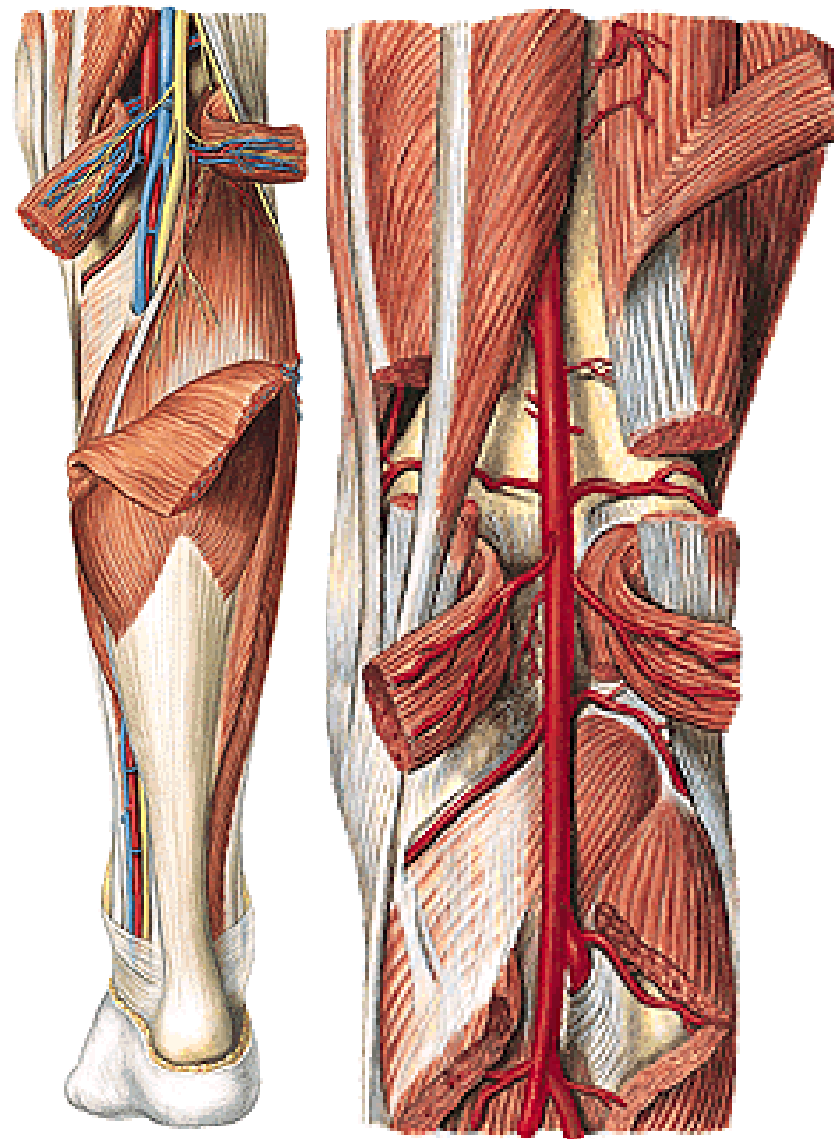
a. media genus

a. inferior medialis a lateralis genus

Konečné větve:

a. tibialis posterior

a. tibialis anterior



REGIO CRURIS ANTERIOR

Kůže

Podkoží

N. saphenus

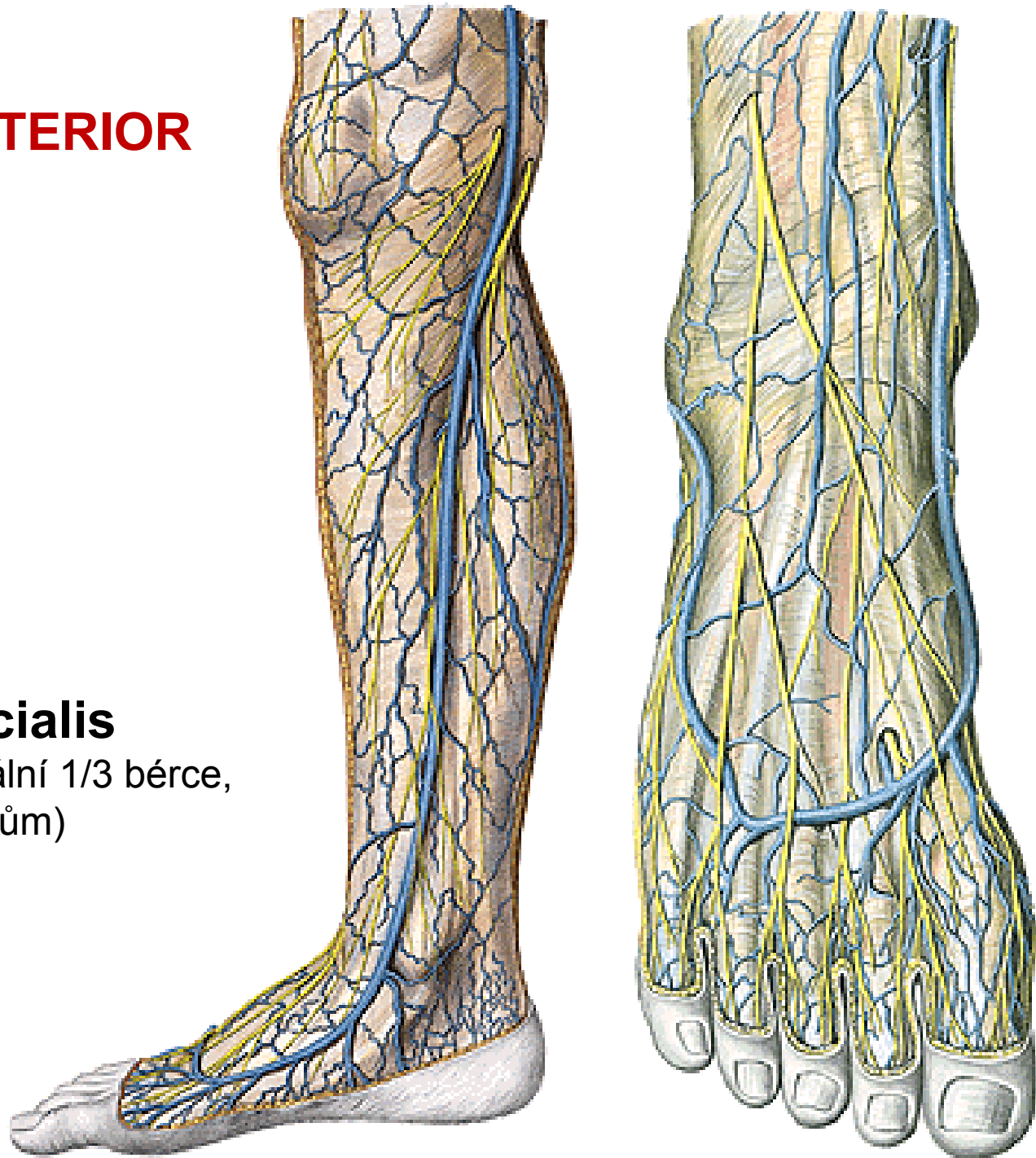
r. infrapatellaris

rr. cutanei cruris mediales

V. saphena magna

N. fibularis superficialis

(proráží fascia cruris v distální 1/3 bérce,
jde na dorsum pedis k prstům)



Fascia cruris

M. tibialis anterior

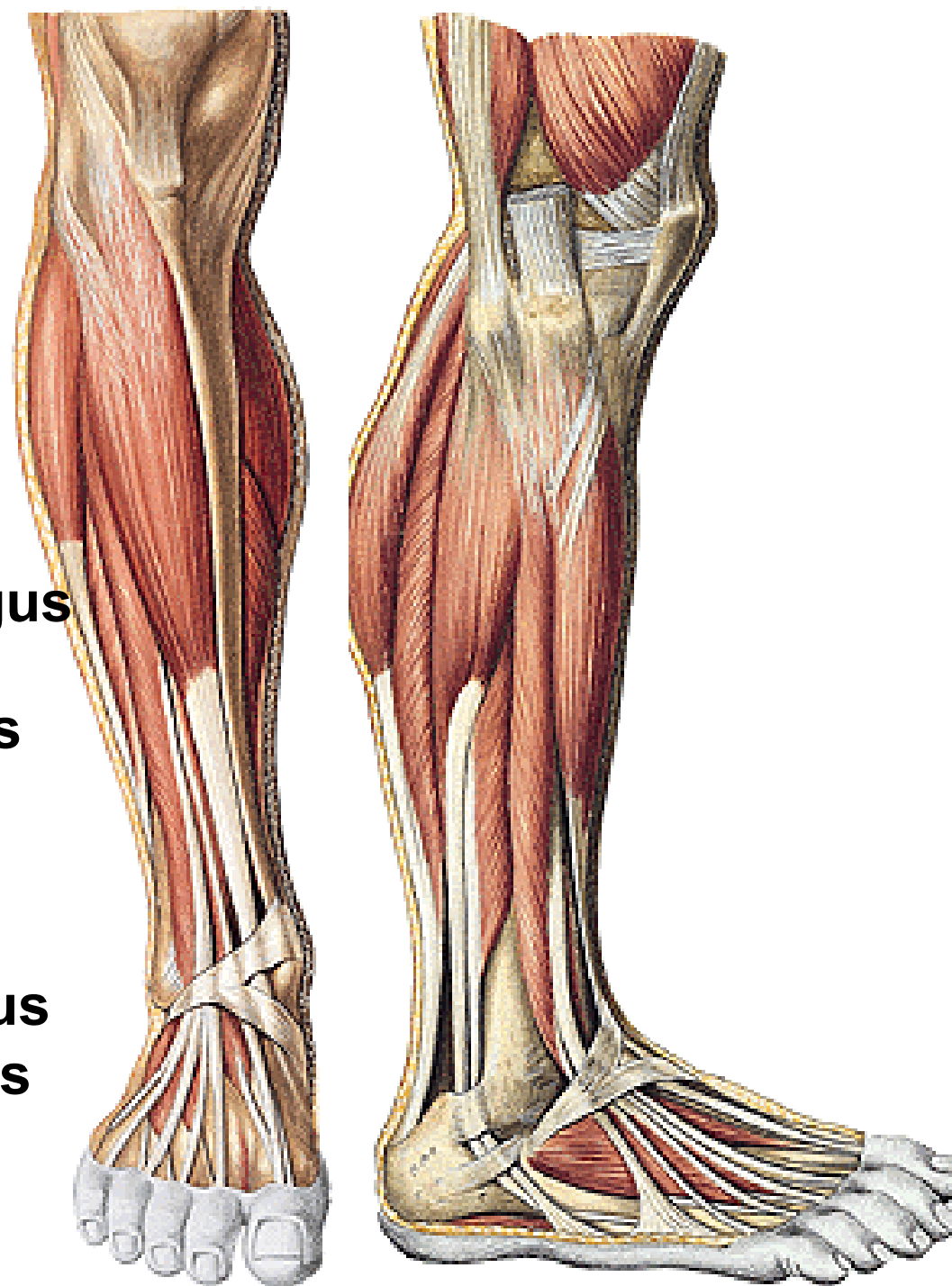
M. extensor digitorum longus
(M. fibularis/peroneus tertius)

M. extensor hallucis longus

Laterální skupina svalů:

M. fibularis/peroneus longus

M. fibularis/peroneus brevis



N. fibularis communis

n. fibularis profundus (mezi svaly přední skupiny bérce, doprovází a. tibialis anterior)

n. fibularis superficialis

(k laterální skupině svalů bérce)

A. tibialis anterior:

1. Kloubní větve

- a. recurrens tibialis post.
- a. recurrens tibialis ant.

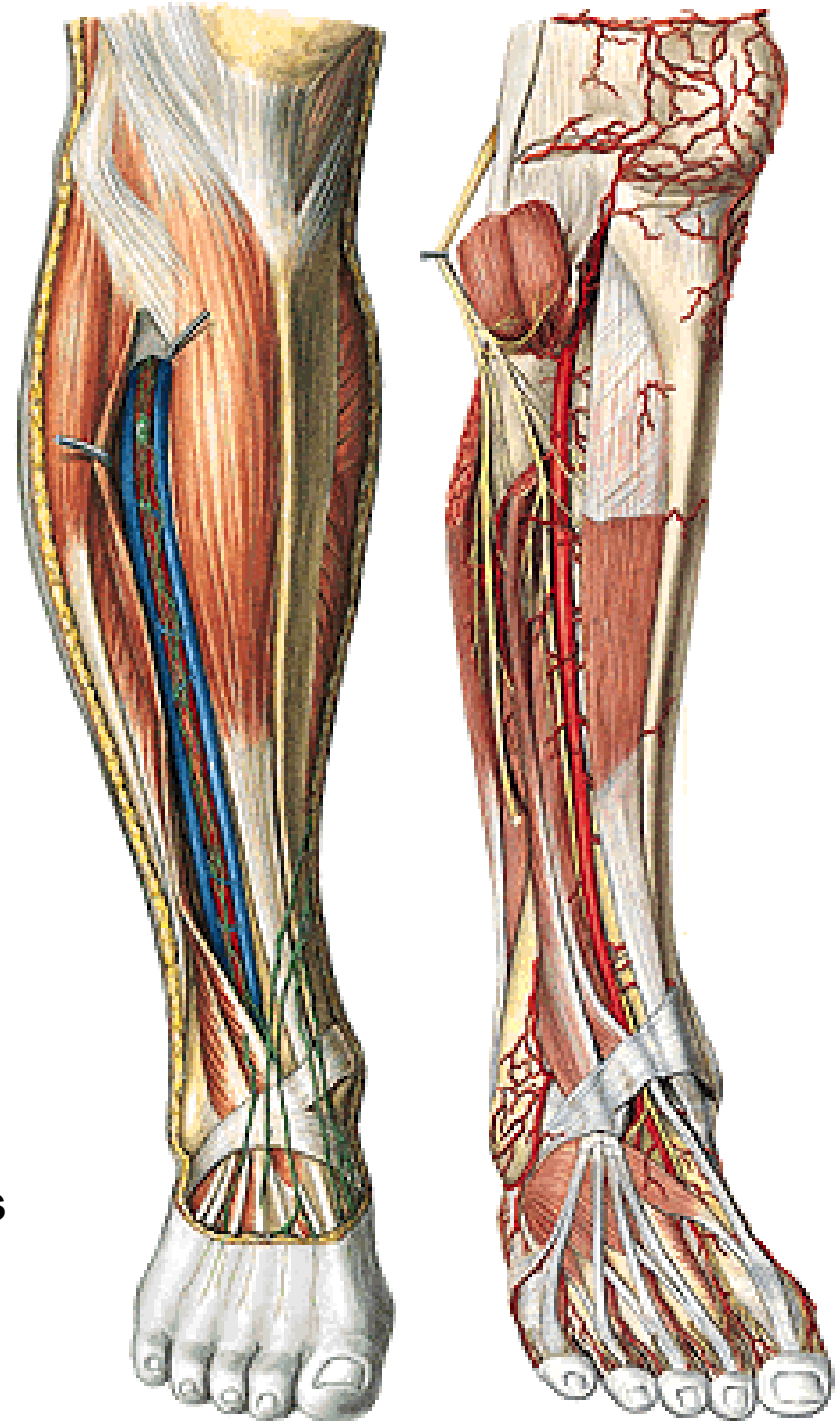
2. rr. musculares

3. Větve ke kotníku

- a. malleolaris ant. med.
- a. malleolaris ant. lat.

Retinaculum extensorum superius a inferius

4. a. dorsalis pedis



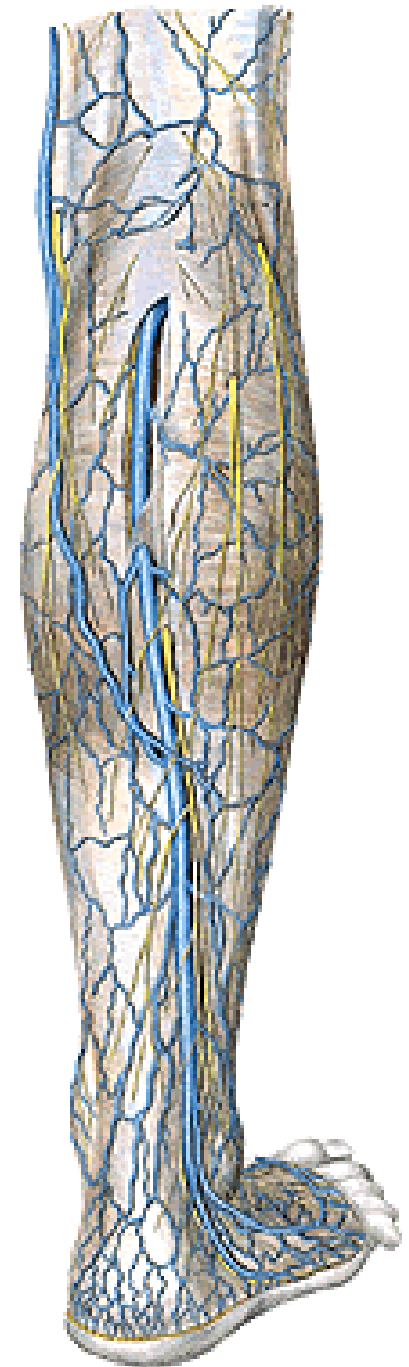
REGIO CRURIS POSTERIOR

Kůže

Podkoží

V. saphena parva

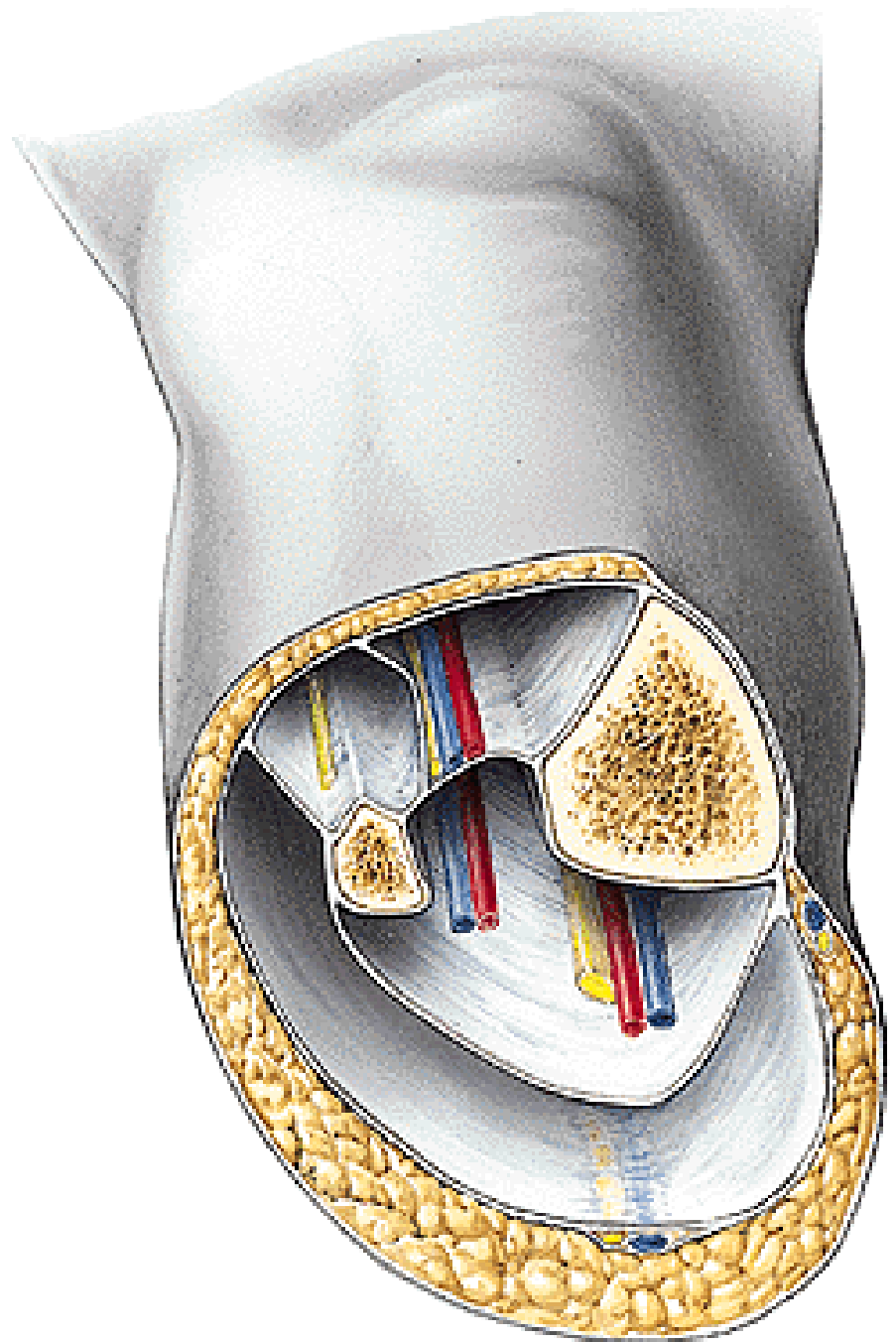
N. suralis



Fascia cruris

Septum intermusculare anterius

Septum intermusculare posterius



Fascia

M. triceps surae

m. gastrocnemius

caput laterale a mediale

m. soleus

Arcus tendineus m. solei

M. plantaris

M. popliteus

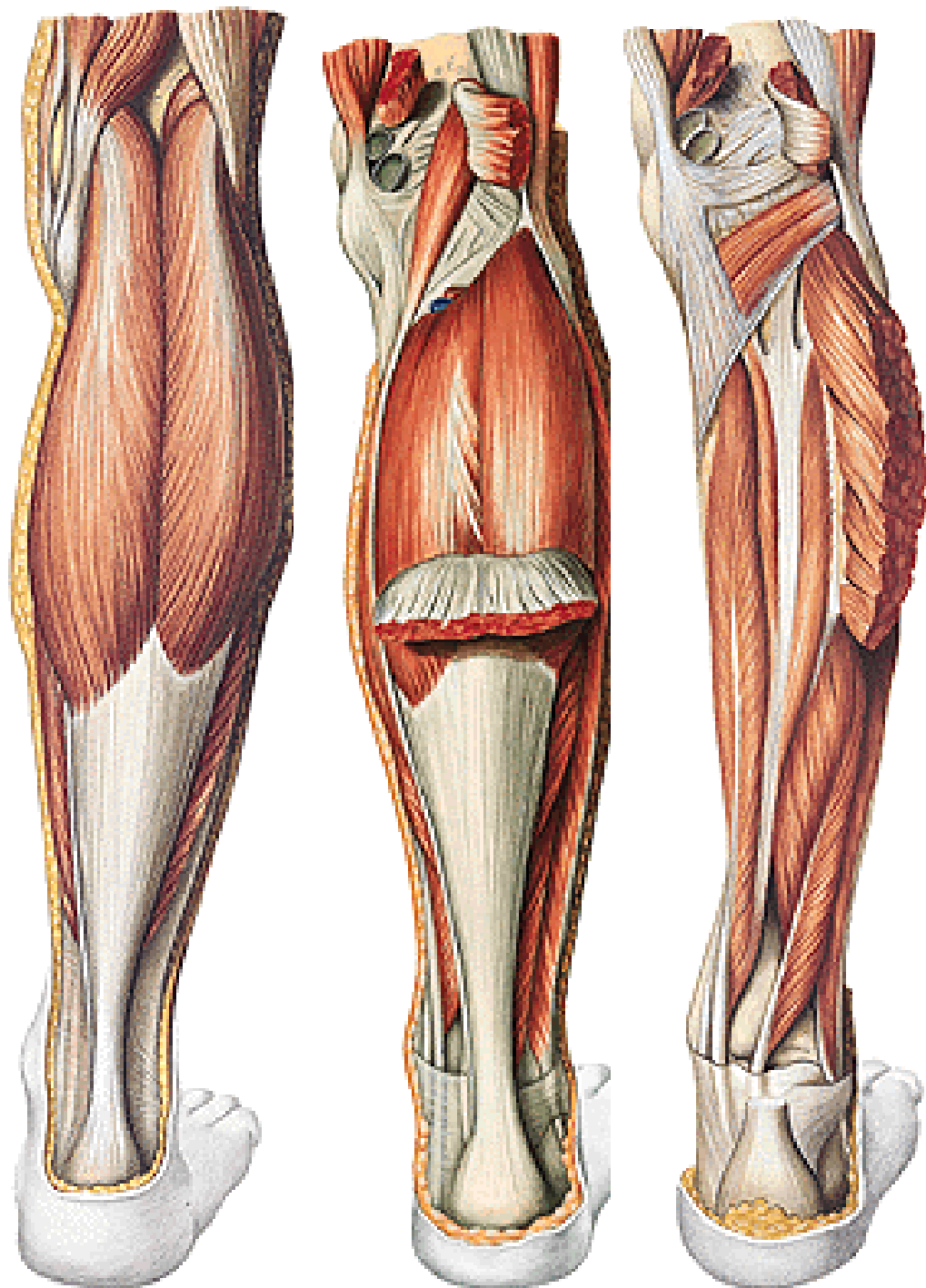
Hluboká vrstva:

M. flexor hallucis longus

M. flexor digitorum longus

M. tibialis post.

Inervace n. tibialis



A. tibialis posterior

rr. musculares

r. circumflexus fibulae

a. fibularis

rr. malleolares med.

rr. calcaneares

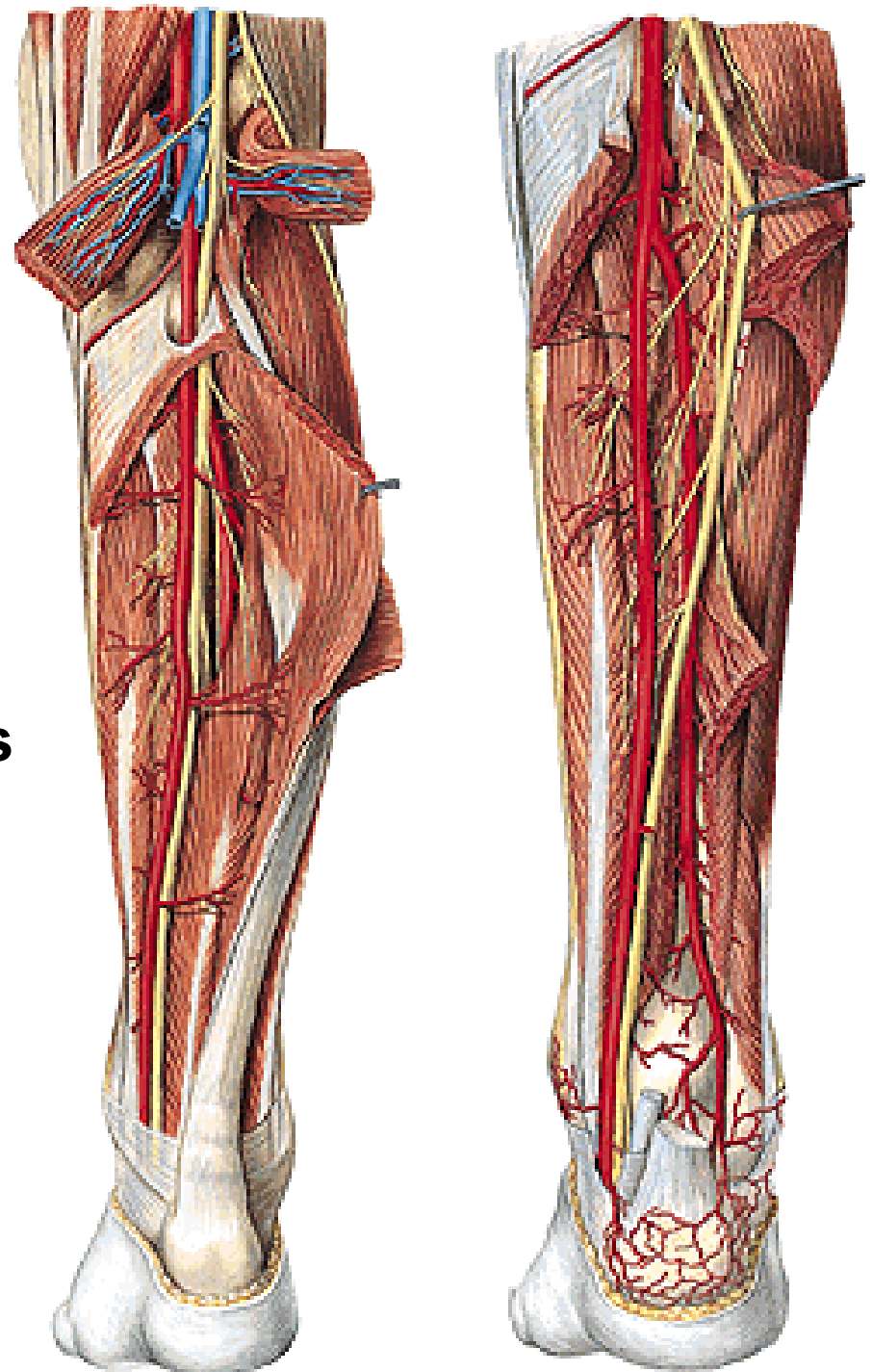
Konečné větve:

a. plantaris medialis a lateralis

Rete malleolare mediale a laterale

Rete calcaneare

Retinaculum flexorum



N. tibialis

n. cutaneus surae medialis

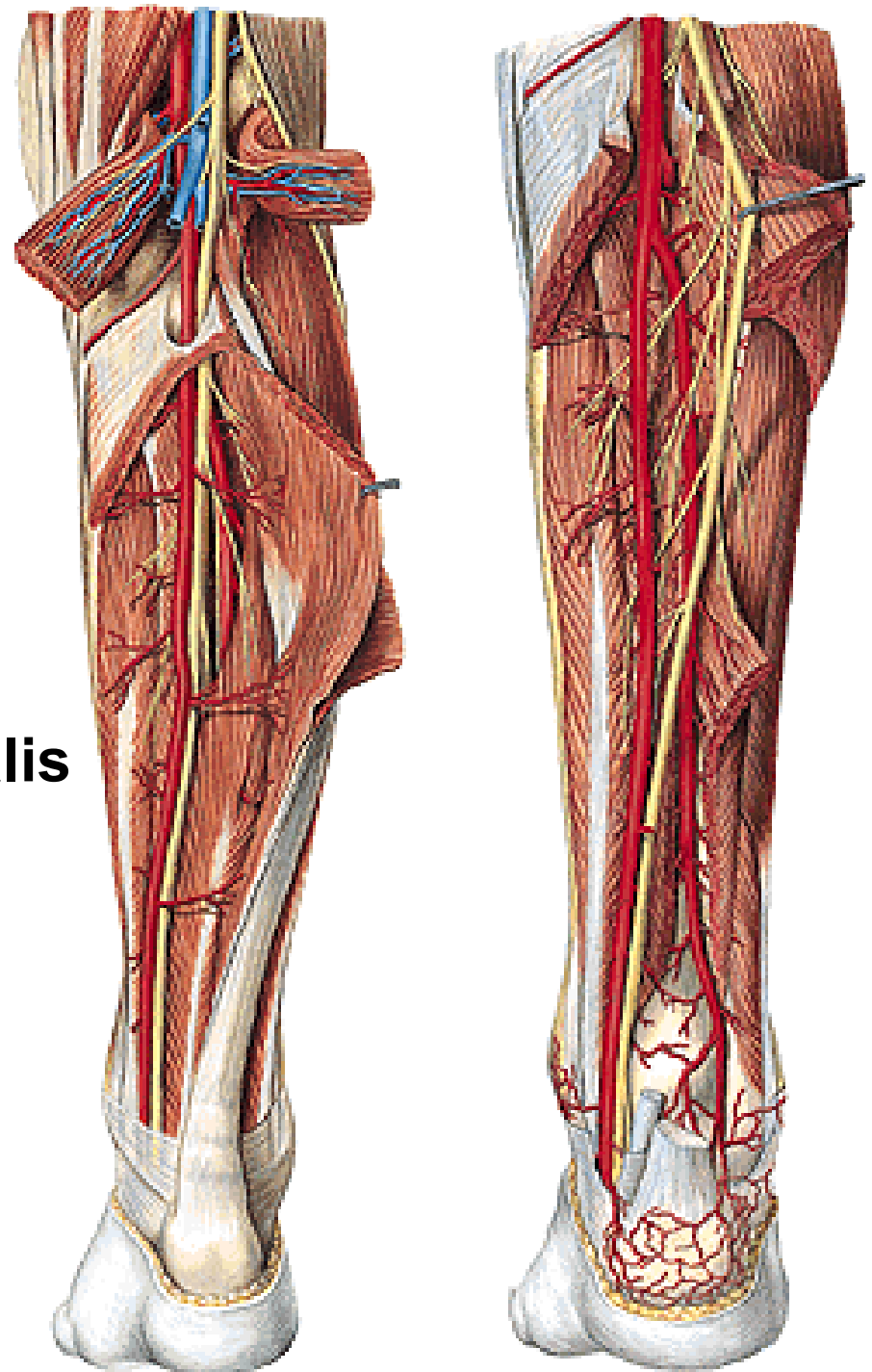
rr. musculares

n. interosseus cruris

rr. calcanei mediales

Konečné větve:

n. plantaris medialis a lateralis



Dorsum pedis

Kůže

Podkoží

Rete venosum dorsale pedis (vznik v. saphena magna a parva)

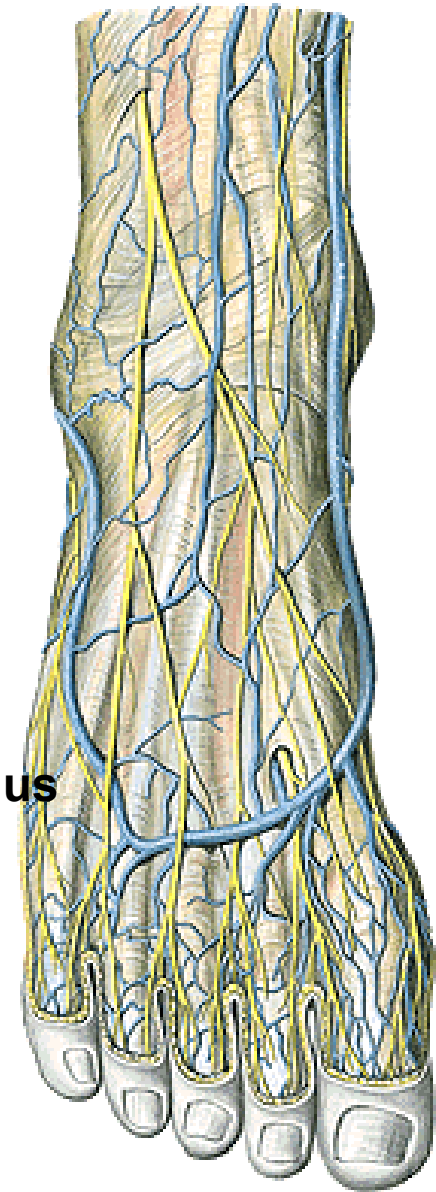
N. cutaneus dorsalis pedis medialis et intermedius

(n. fibularis/peroneus superficialis) - nn. digitales dorsales

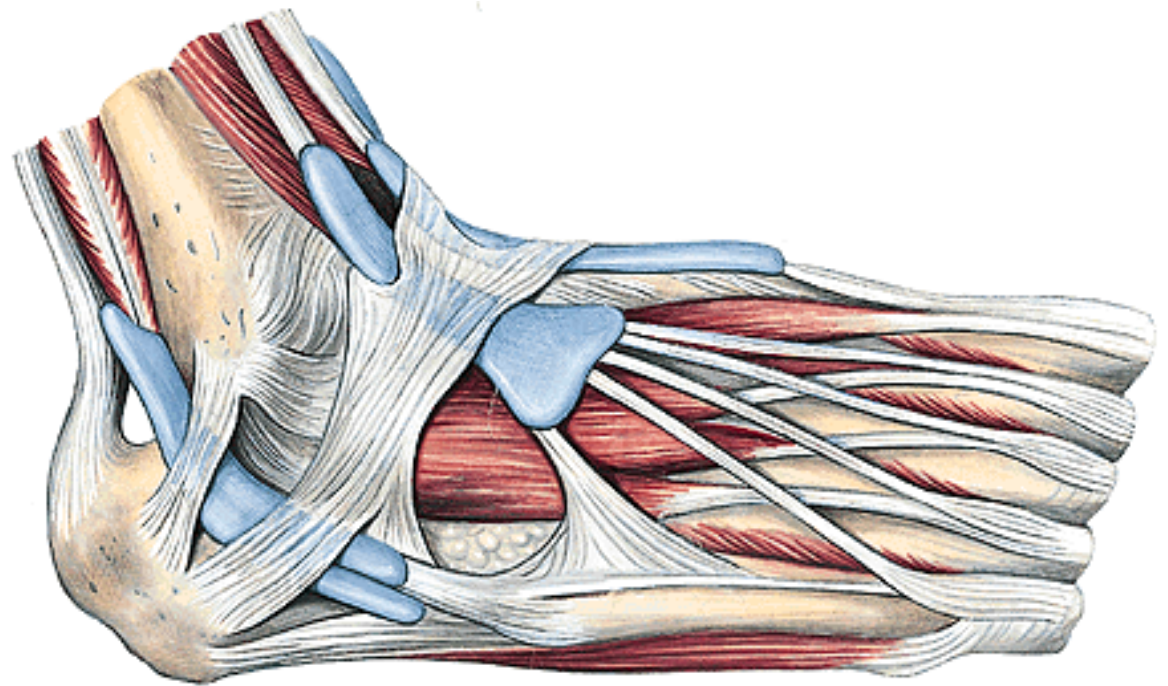
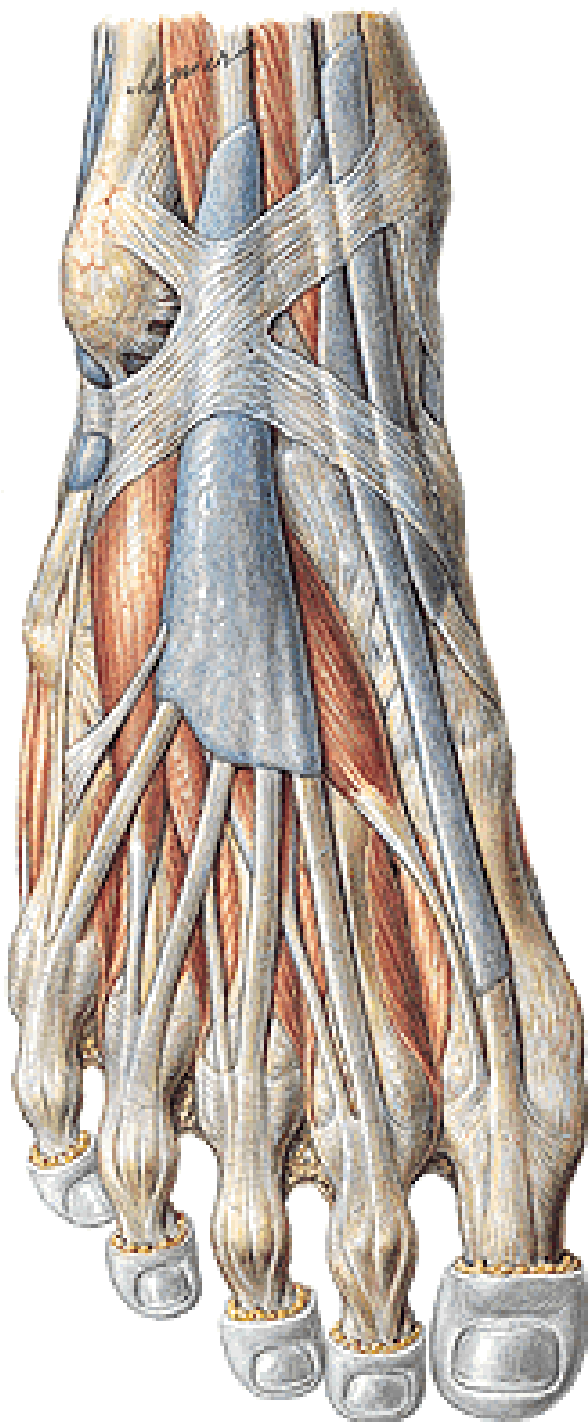
N. cutaneus dorsalis lateralis (n. suralis)

Nn. digitales dorsales (mezi 1. a 2. prstem - n. fibularis profundus!!!)

Retinaculum (musculorum) extensorum superius a inferius



Retinaculum (musculorum) fibularium superius et inferius



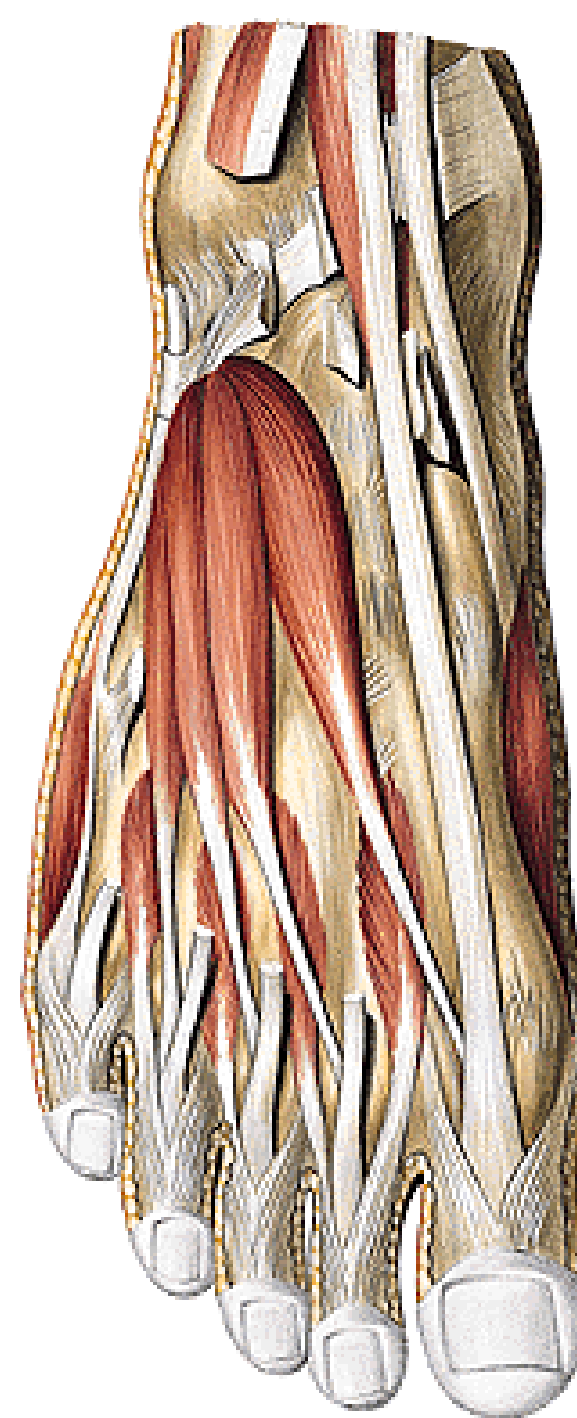
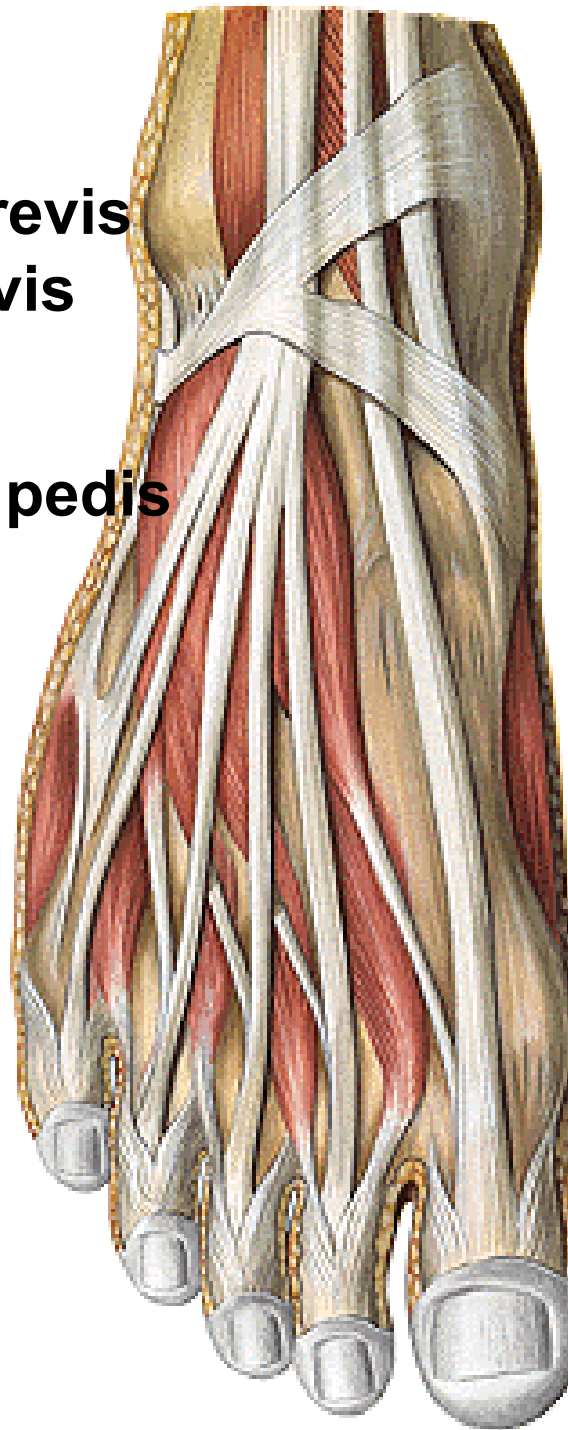
M. extensor digitorum brevis

M. extensor hallucis brevis

(n. fibularis/peroneus profundus)

Mm. interossei dorsales pedis

(n. plantaris lateralis)



A. dorsalis pedis

a. tarsalis lateralis

aa. tarsales mediales

a. arcuata

aa. metatarsae dorsales

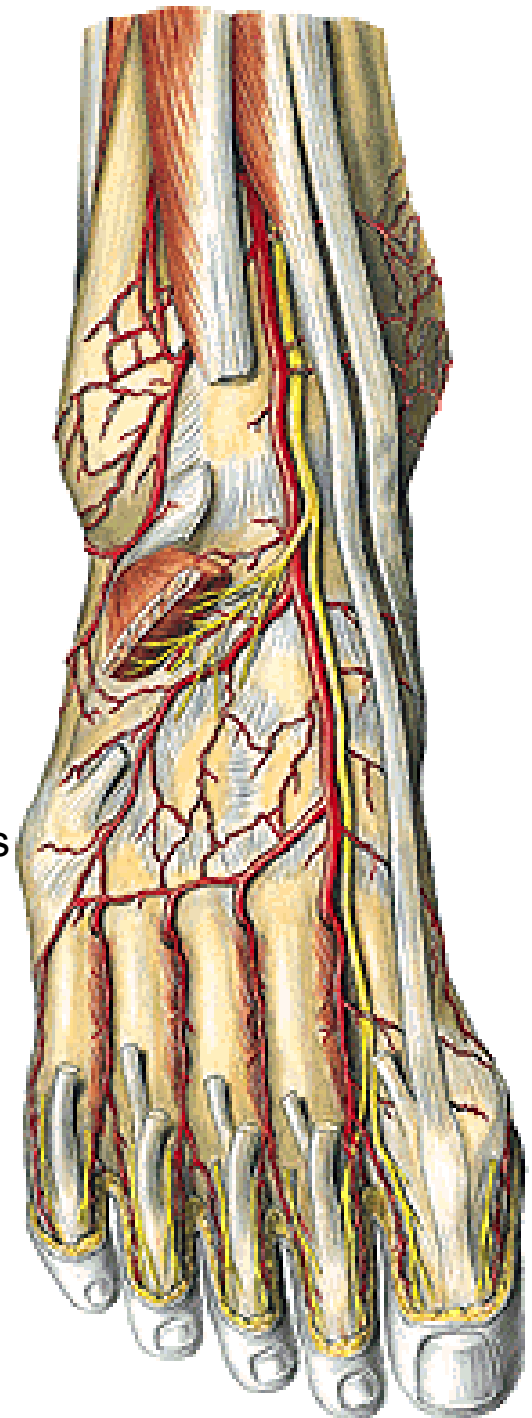
aa. digitales dorsales

r. plantaris profundus

N. fibularis/peroneus profundus

rr. musculares (pro m. extensor digitorum a hallucis brevis)

nn. digitales dorsales (mezi 1. a 2. prstem, n. fibularis profundus)



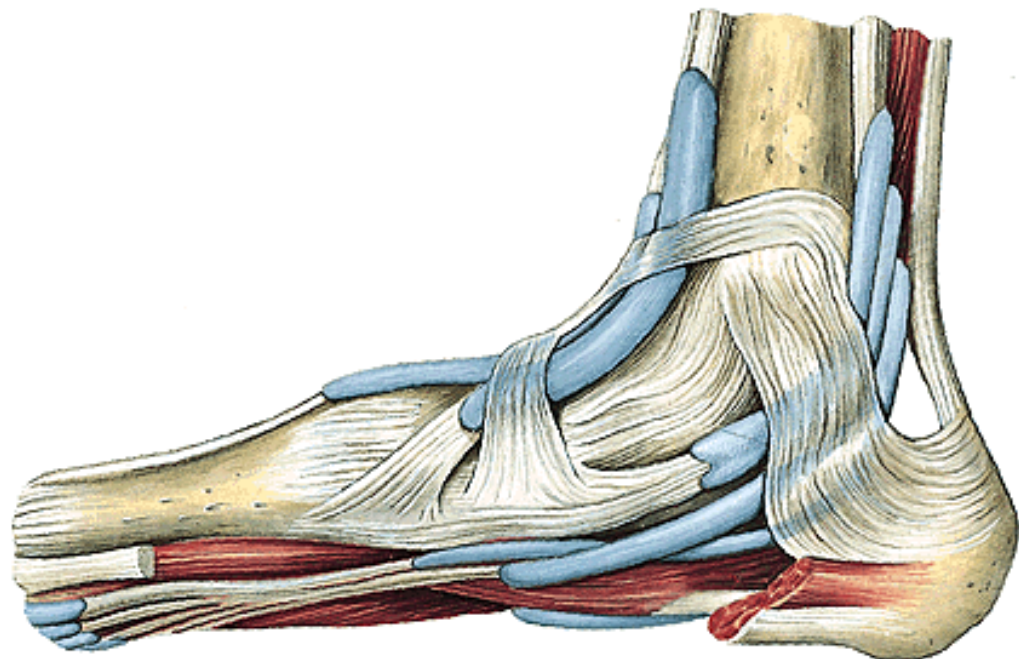
Planta pedis

Kůže

Podkoží

Aponeurosis plantaris

Retinaculum (musculorum) flexorum



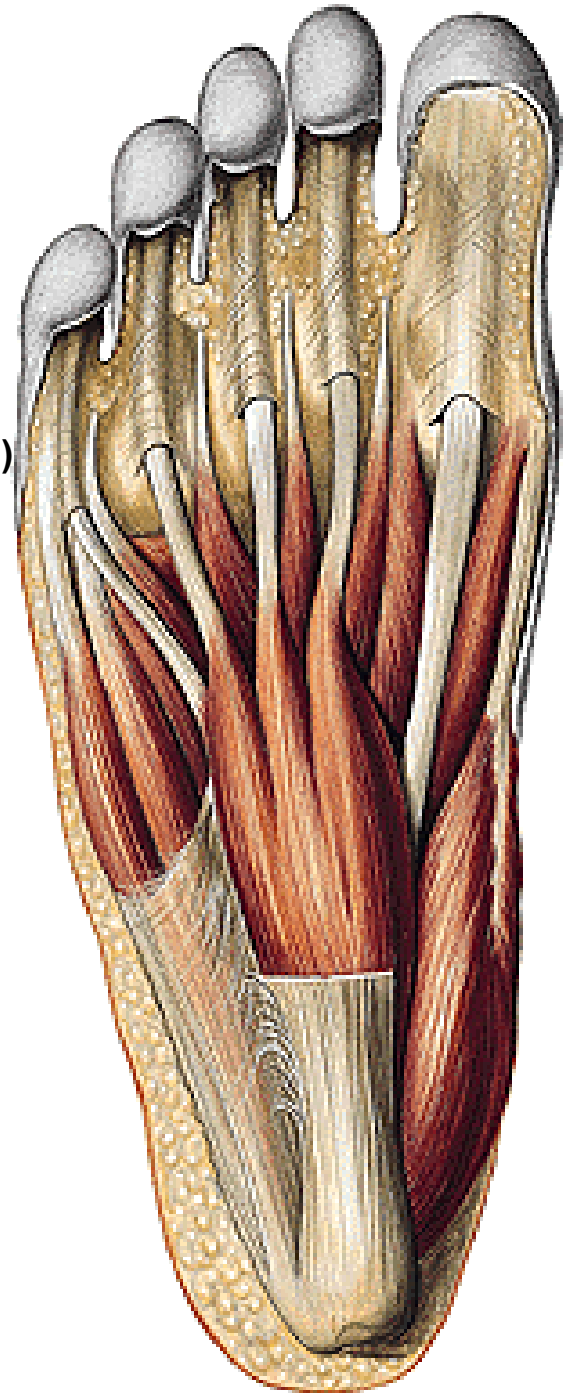
Fascie

Povrchová vrstva:

M. abductor hallucis (n. plantaris medialis)

M. flexor digitorum brevis (n. plantaris medialis)

M. abductor digiti minimi (n. plantaris lateralis)



Střední vrstva

M. quadratus plantae (n. plantaris lateralis)

Mm. lumbricales I.-IV. (I. a II. n. plantaris medialis; III. a IV. n. plantaris lateralis)

Šlachy dlouhých flexorů prstů

Hluboká vrstva

M. flexor hallucis brevis (n. plantaris med. i lat.)

caput mediale

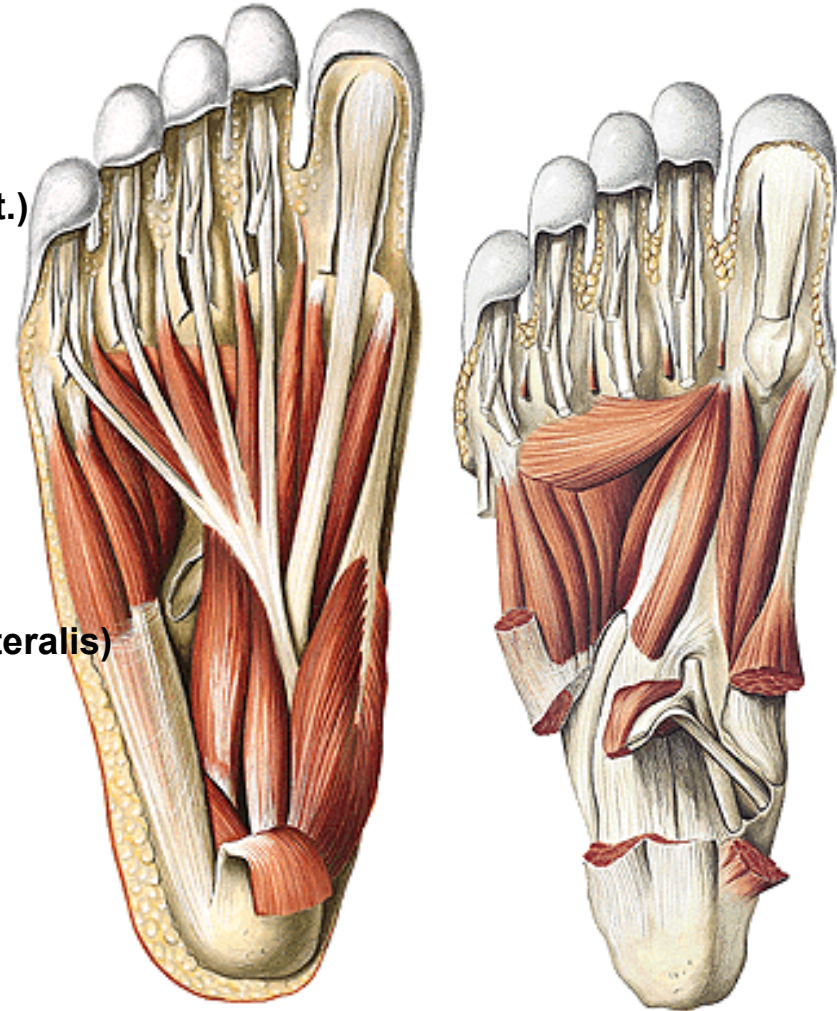
caput laterale

M. adductor hallucis (n. plantaris lateralis)

caput obliquum

caput transversum

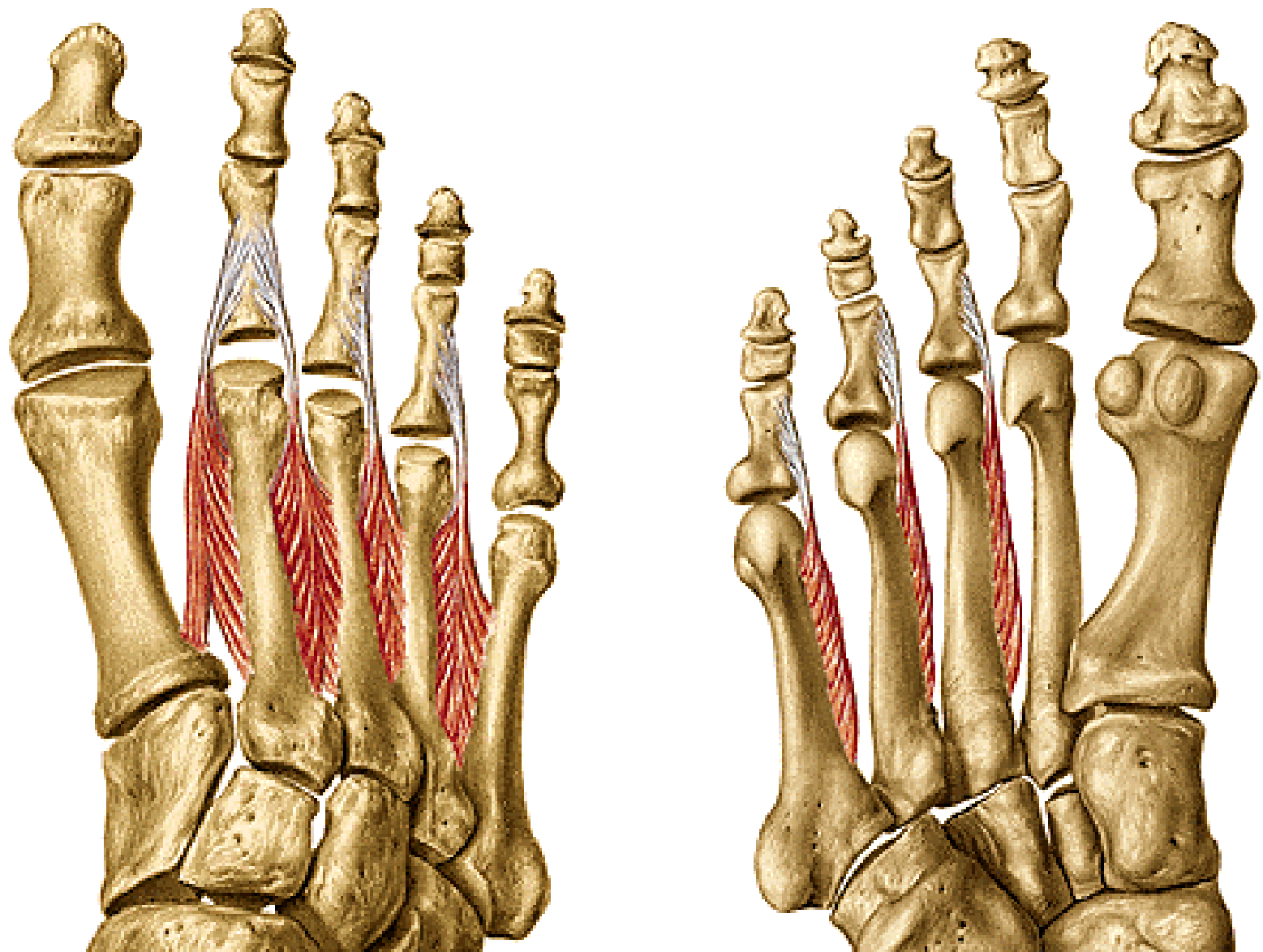
M. flexor digiti minimi brevis (n. plantaris lateralis)



Mm. interossei dorsales I.-IV.

(n. plantaris lateralis)

Mm. interossei plantares I.-III.



N. plantaris medialis

rr. musculares

nn. digitales plantares communes

nn. digitales plantares proprii – (l.- med. polovina IV. prstu)

N. plantaris lateralis

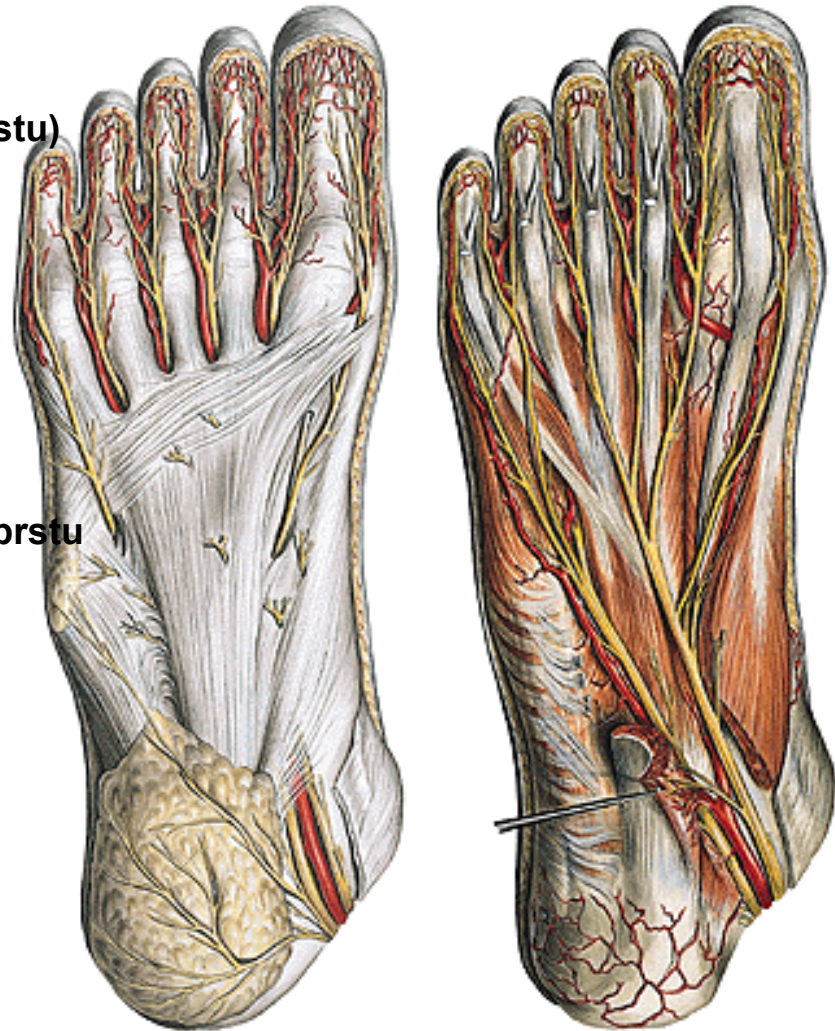
rr. musculares

r. superficialis

nn. digitales plantares communes

nn. digitales plantares proprii k V. a lat. polovině IV. prstu

r. profundus pro svaly malíku.....



A. plantaris medialis

r. superficialis

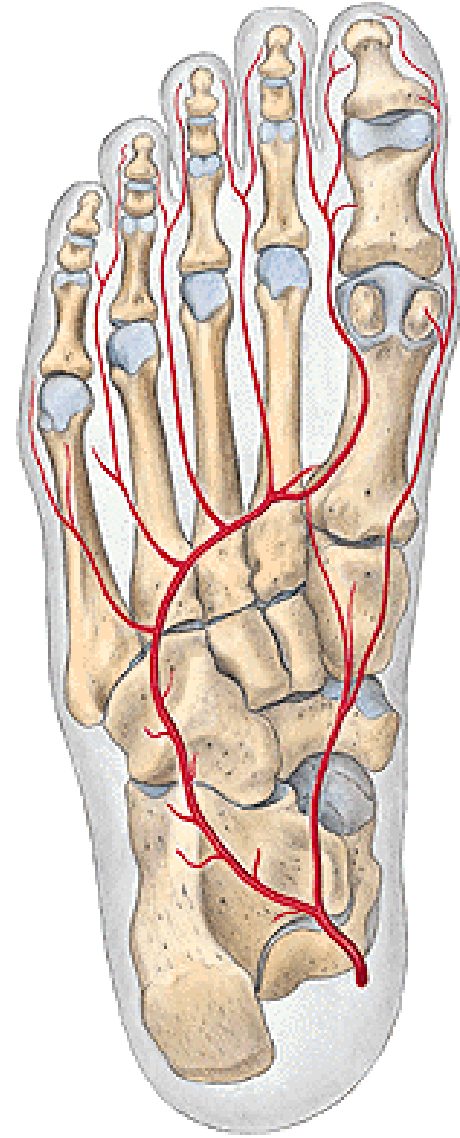
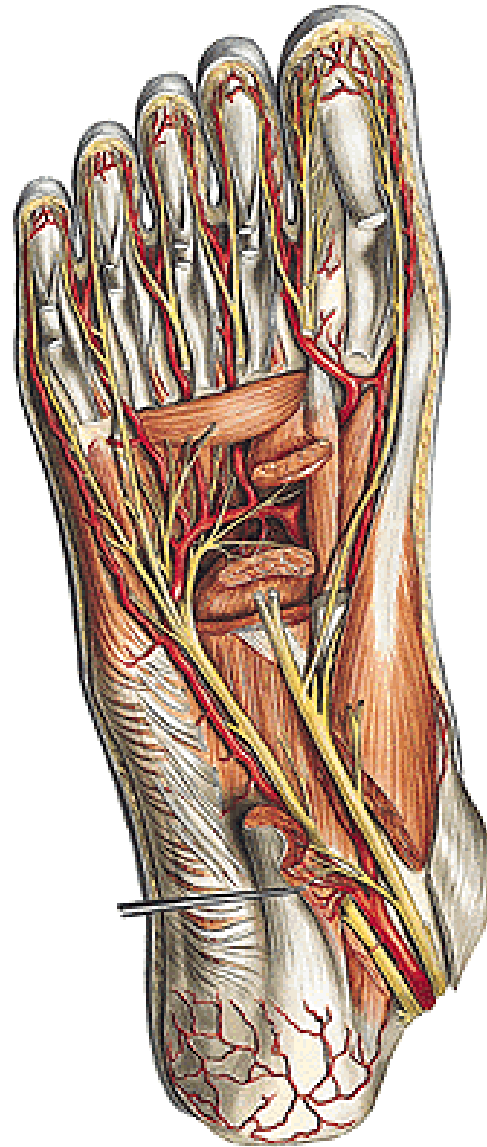
r. profundus

A. plantaris lateralis

arcus plantaris

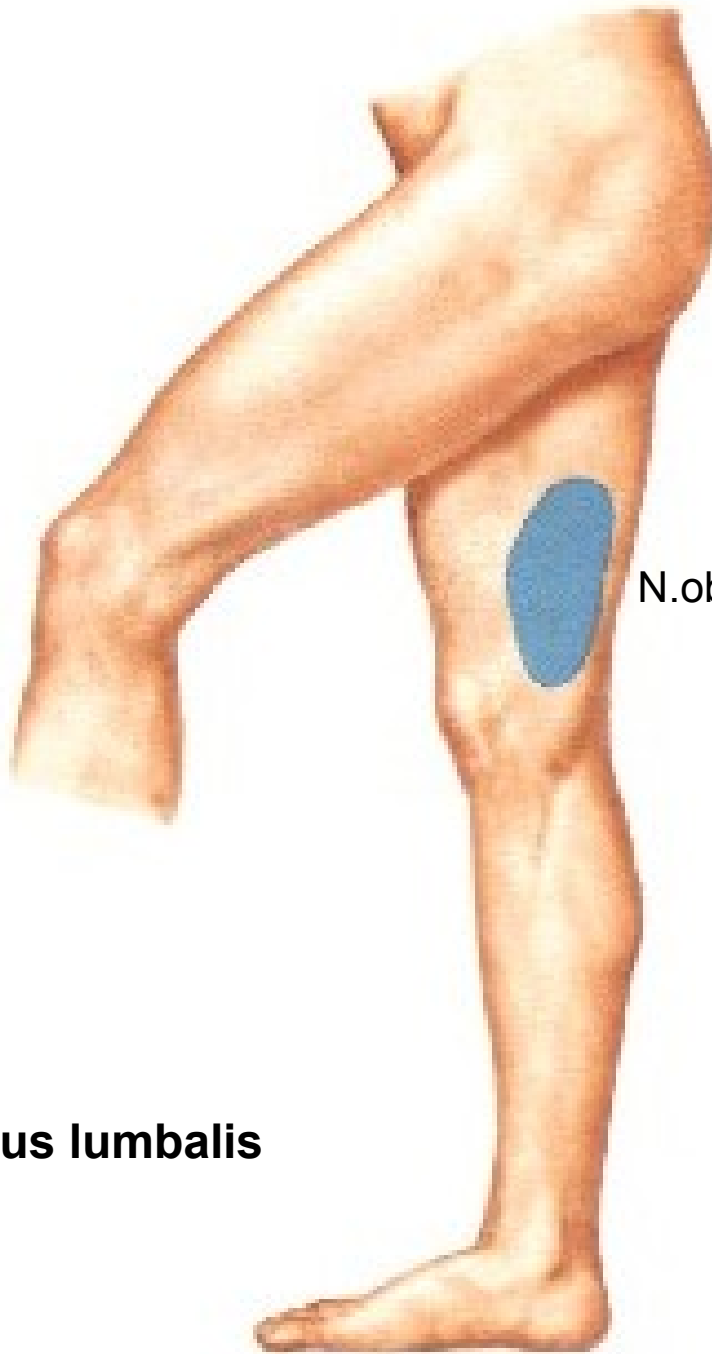
aa. metatarsae plantares

aa. digitales plantares





Plexus lumbalis



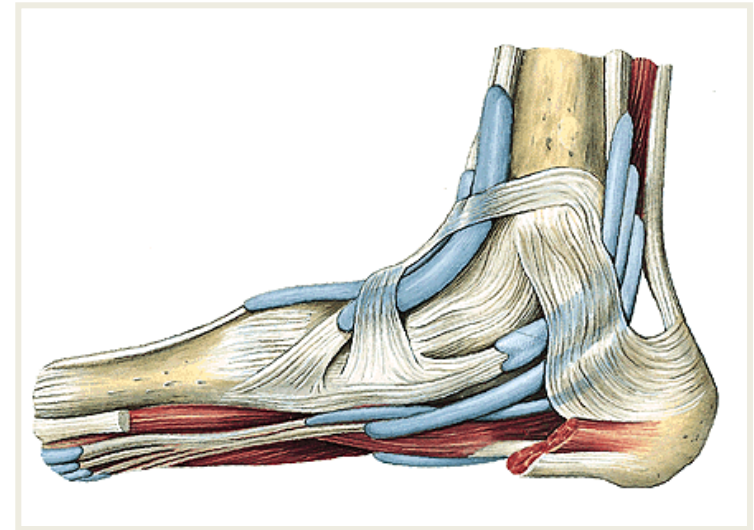
N. obturatorius



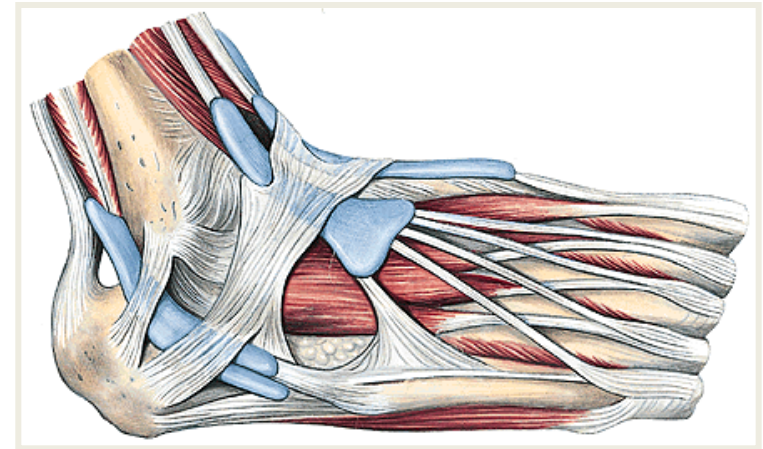
Plexus sacralis



Retinaculum mm. extensorum
superius et inferius



Retinaculum mm. flexorum



Retinaculum mm. fibularium
superius et inferius

Použitá literatura

Atlas der Anatomie des Menschen/Sobotta.

**Putz,R., und Pabst,R. 20. Auflage. München:
Urban & Schwarzenberg, 1993**

Čihák, R. (2016): Anatomie 3. Grada.

Gilroy, A. M. et al. (2009): Atlas of Anatomy.
Thieme New York, Stuttgart.

Moore, K. L. (1992): Clinical oriented anatomy.
Third edition. Williams&Wilkins, A Waverly Company.

Rohen, J.W., Yokochi, Ch. (1988): Anatómia človeka.
Schattauer Stuttgart- New York.