

INTERACTIVE TEACHING

Name and surname: _____

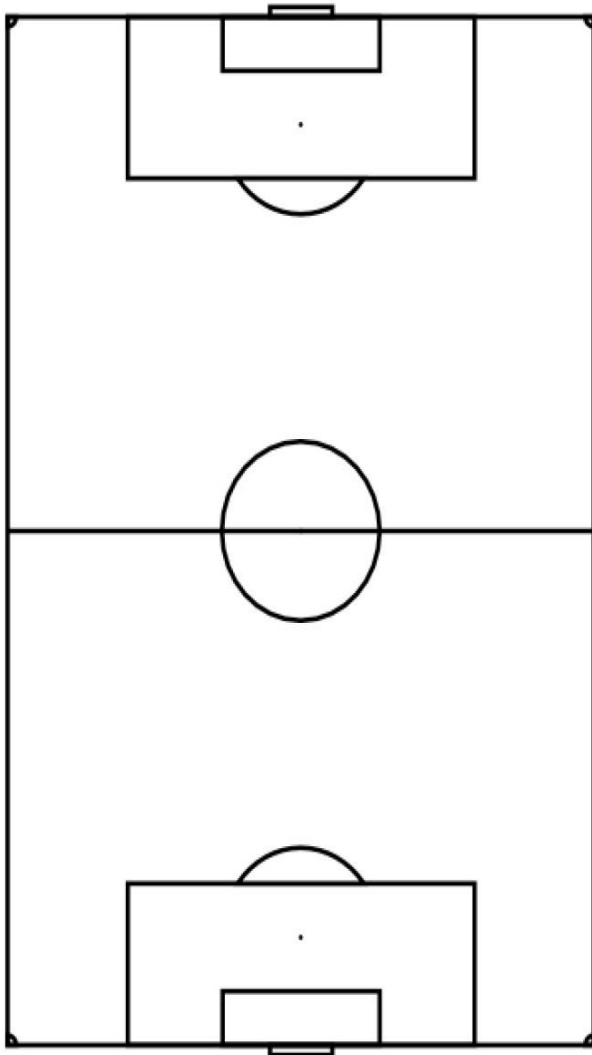
ID number: _____

Game: _____ - _____ Result: __ - __ (__ - __)

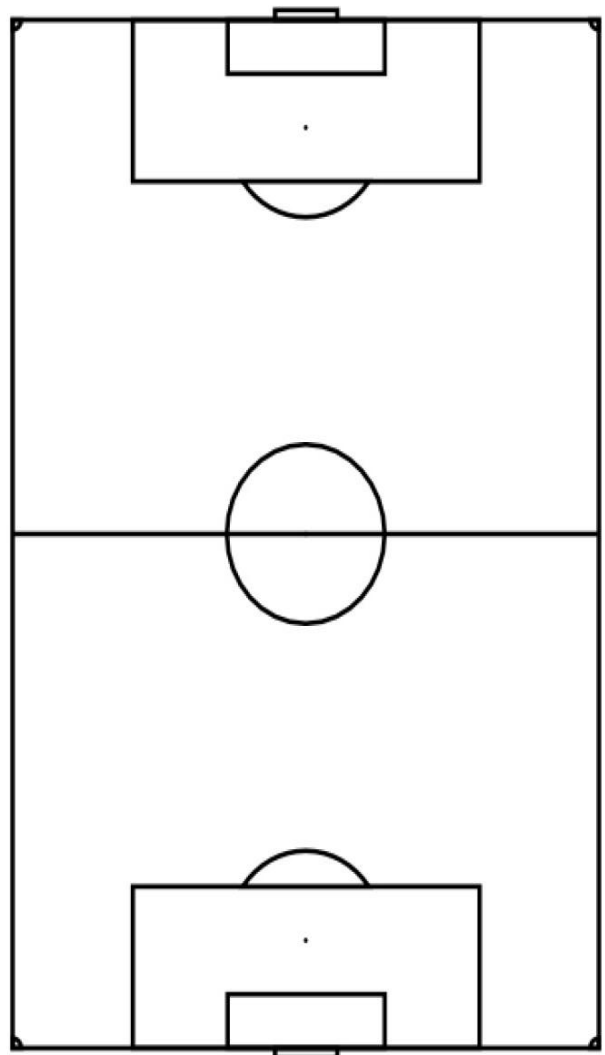
Task 1

Draw on the field the positions of lost balls in the 1st and 2nd half of the home or away team, depending on which group you belong to.

1st half



2nd half



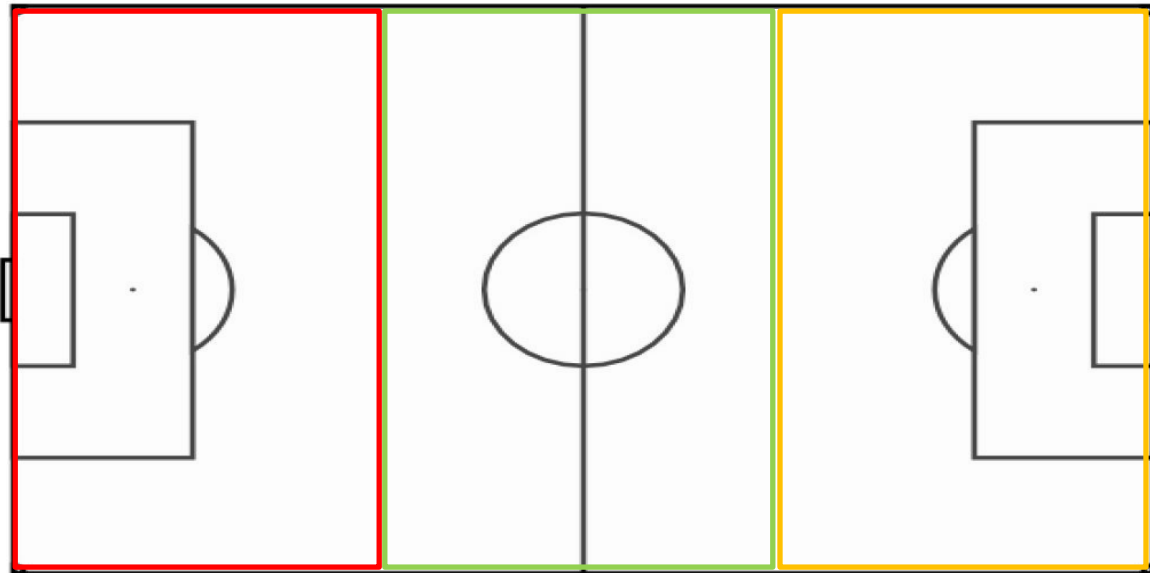
Symbols:

X - lost ball



X9 - lost ball by player No9

Task 2

Plot all passes (correct and incorrect) by one player (except the goalkeeper) in the team you are analyzing using the arrows.



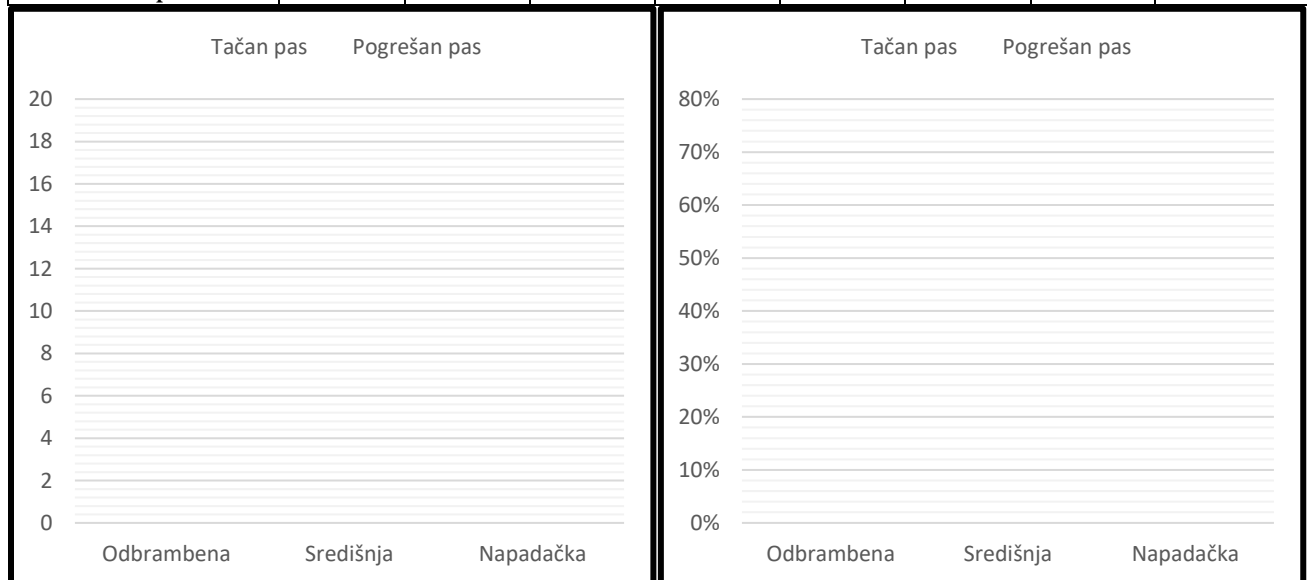
Symbols:

-  - correct pass
-  - incorrect pass

Task 3

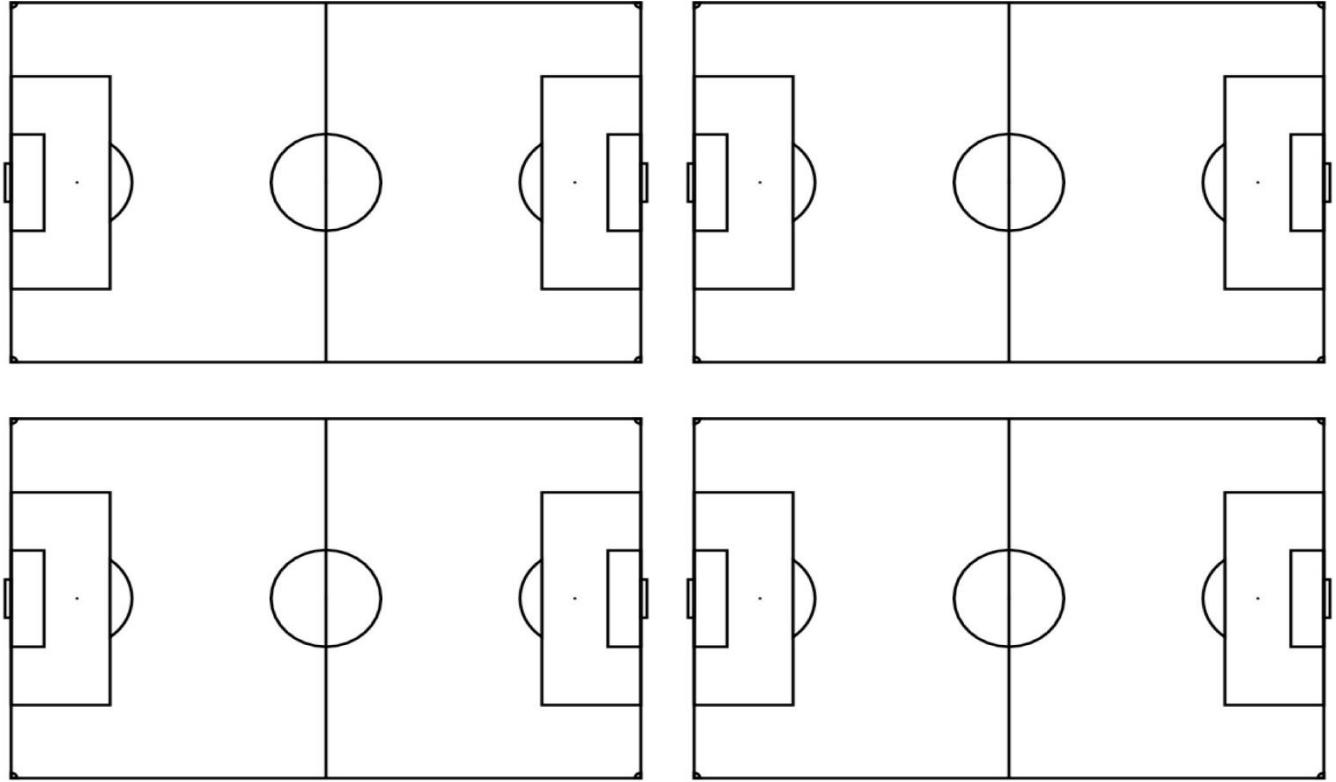
Perform statistical processing of Task 2 and graphically display the results in absolute and relative (percentage) values by zones of the field (defensive - red; central - green; offensive - yellow).

	Defending		Midfield		Attacking		Total	
Correct pass		%		%		%		%
Incorrect pass		%		%		%		%



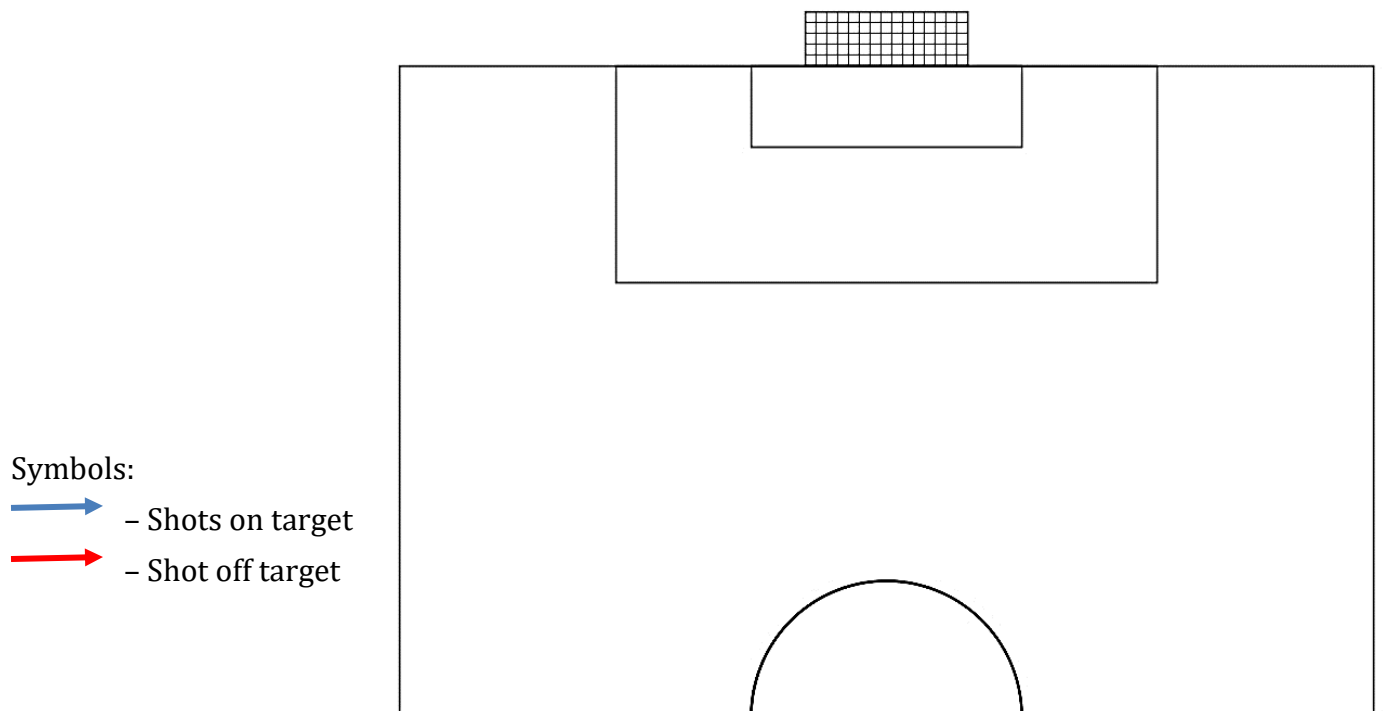
Task 4

Schematically show all the goals in the game from the moment of winning the ball to the moment of scoring the goal. Draw all the passes and indicate which player took part in the action.



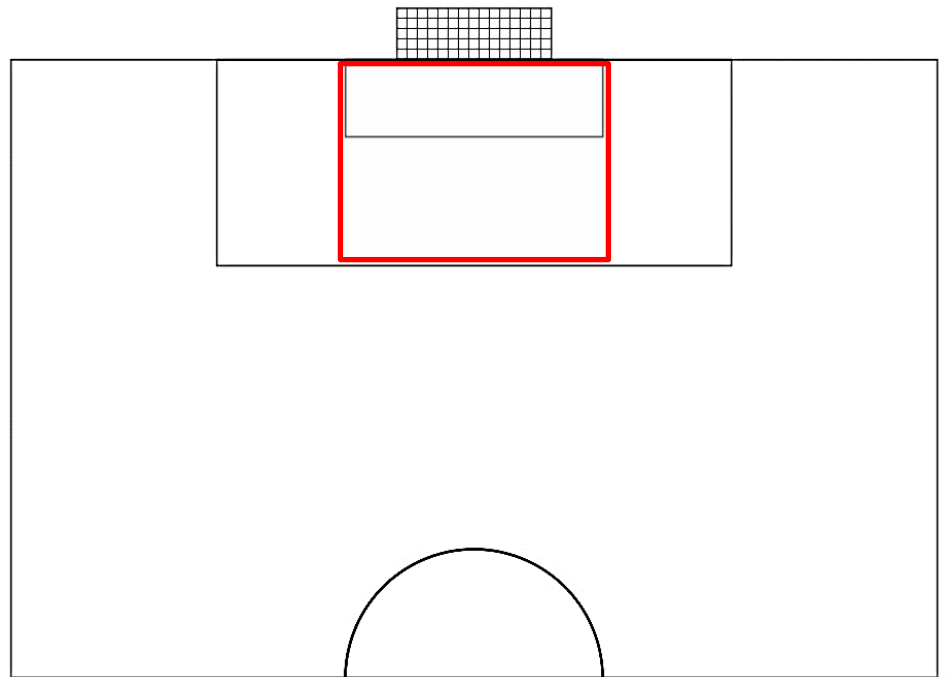
Task 5

Schematically show all shots on the opponent's goal.





Task 6

Make a graphic representation of the final pass for the specified (shaded) part of the field



Symbols:

-  - Short pass
-  - Long pass

Task 7

Present team formations

Team formation: _____

