

Obr. 2a Svaly hrudníku a břicha

1 m.

2

3 *trigonum colli laterale*

4 m.

5 m.

6 m.

7 m.

8 *articulatio*

9 m.

10 *plica axillaris anterior*

11 *processus*

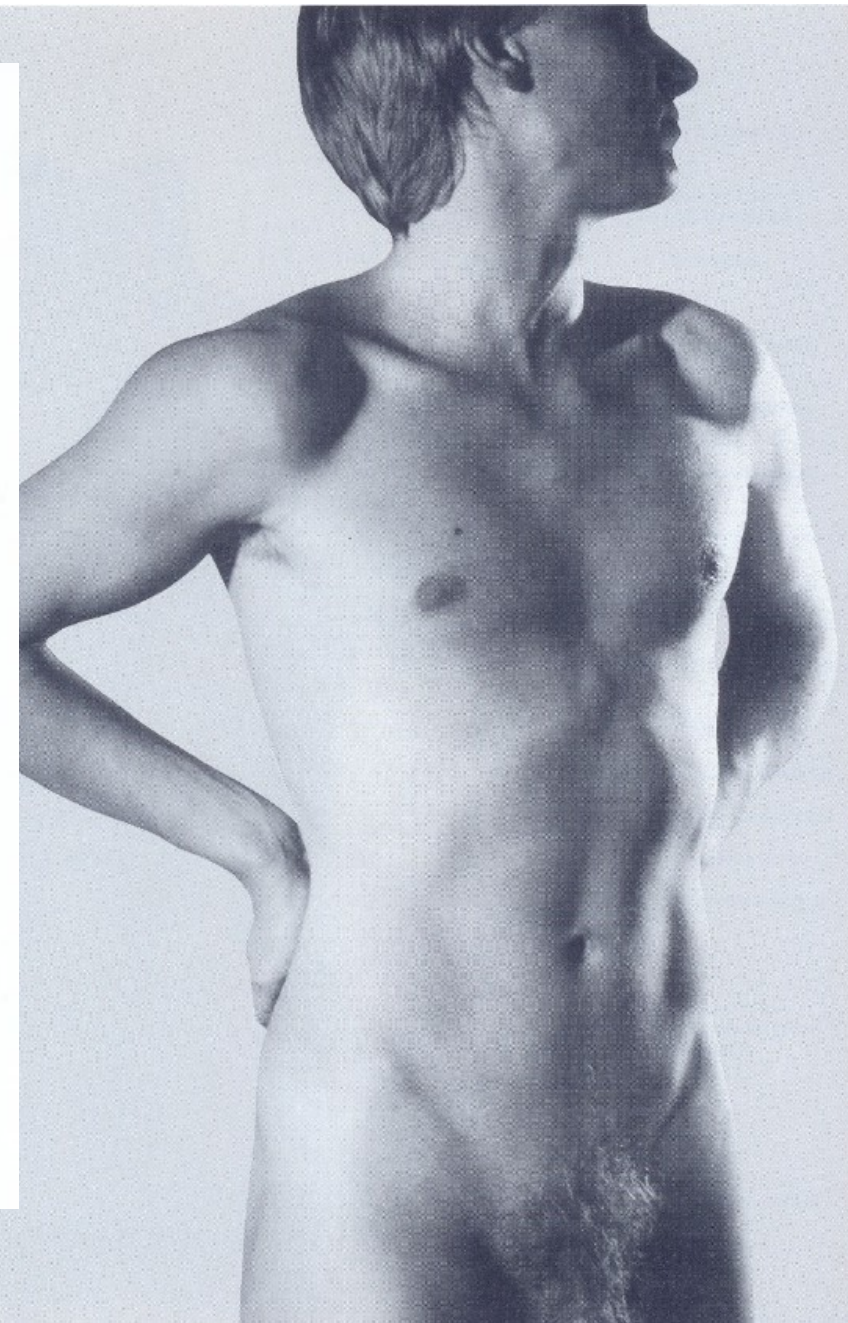
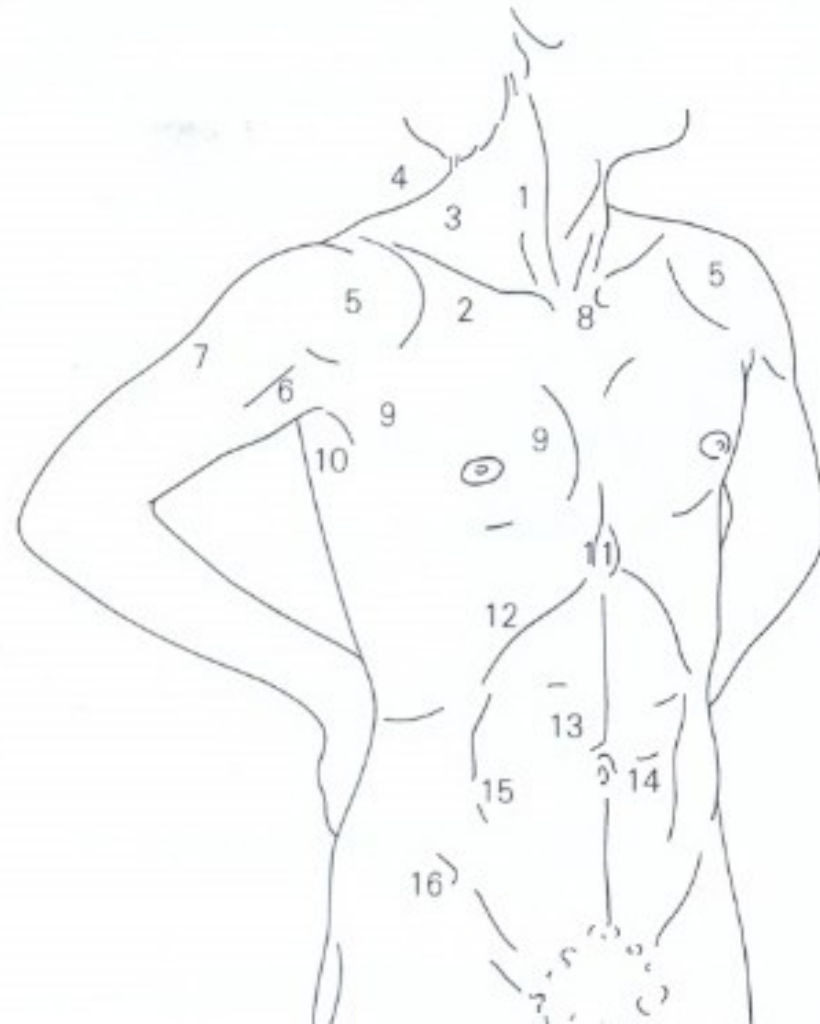
12 *arcus*

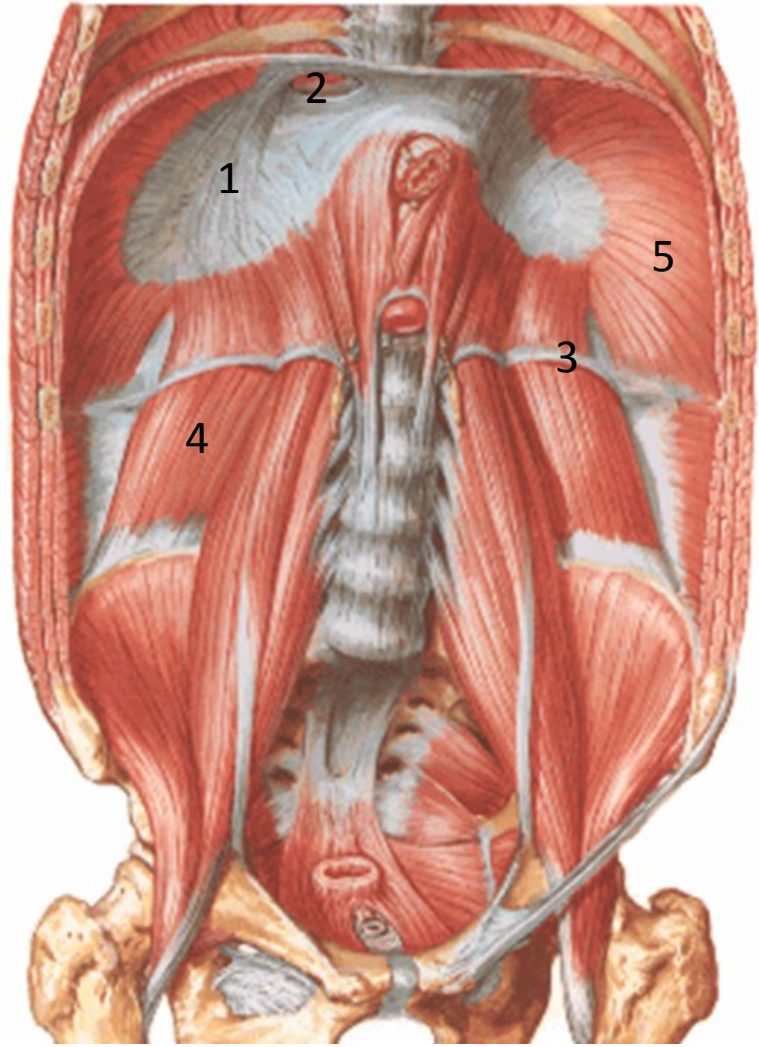
13 m.

14

15 *linea semilunaris*

16 *spina*





- 1
- 2
- 3
- 4
- 5

