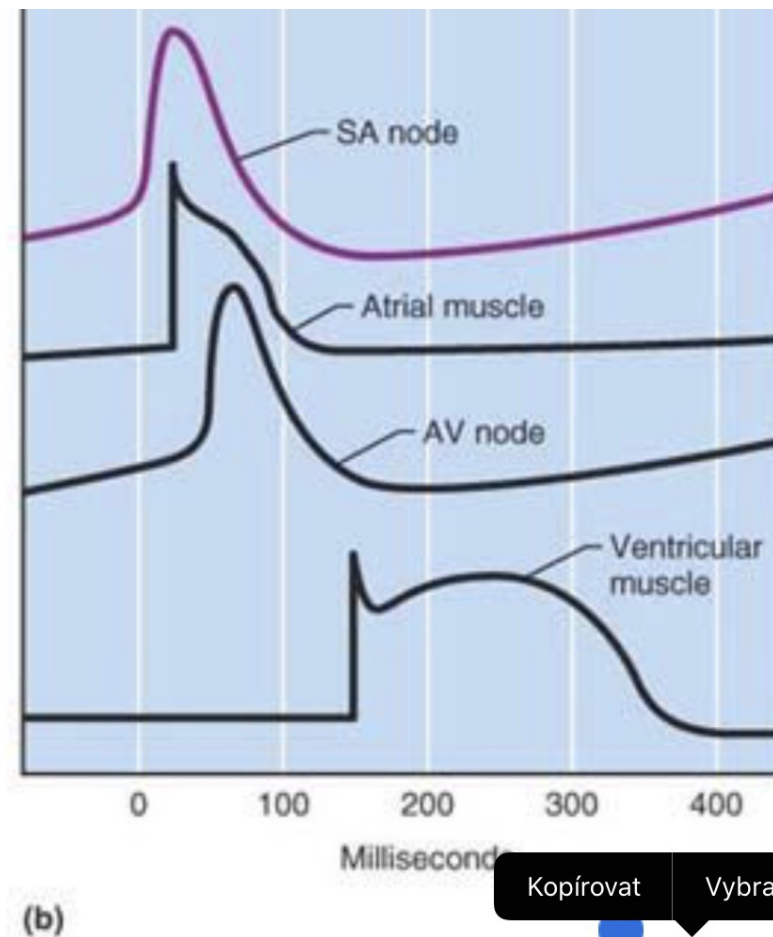
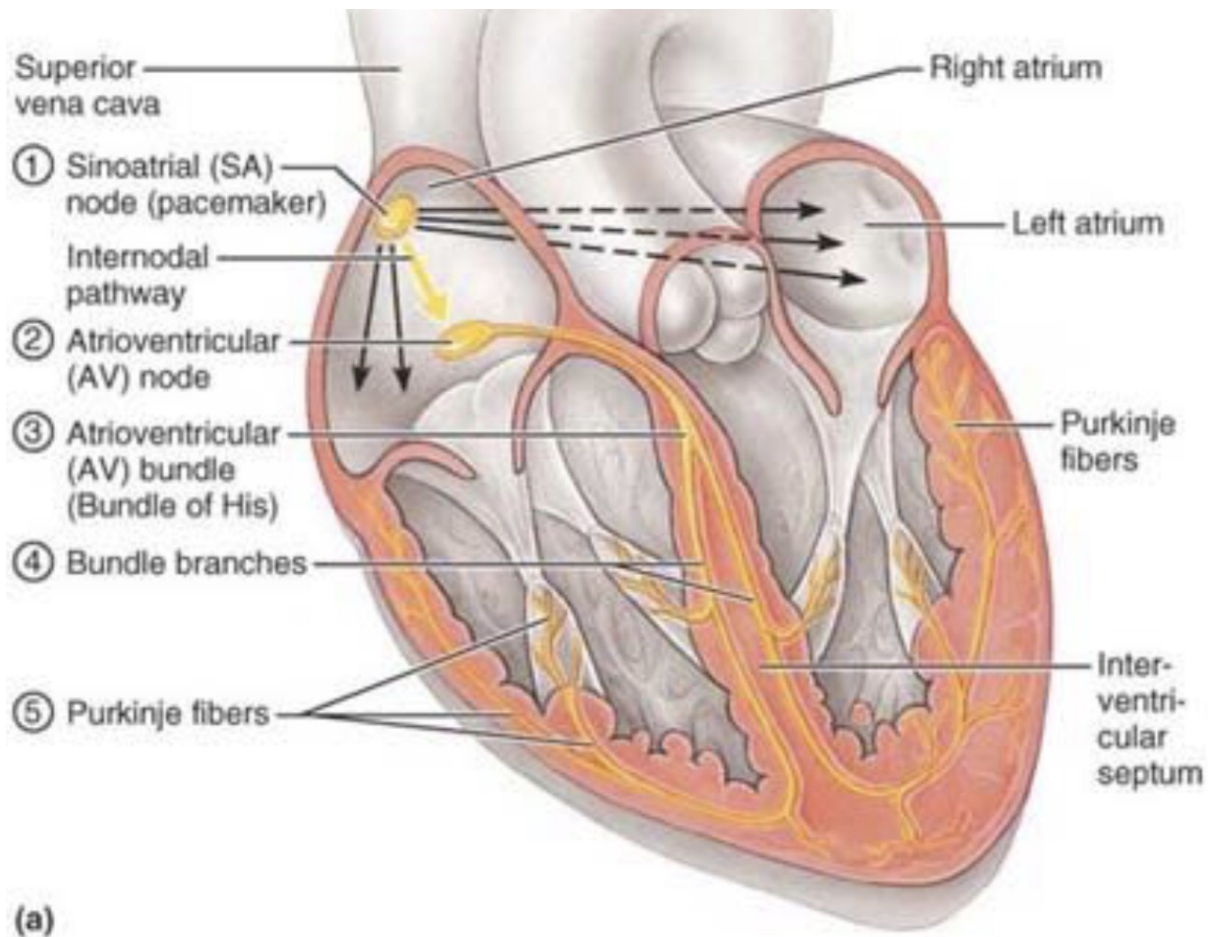


Převodní systém srdeční a křivka EKG – komentovaná prezentace

Mgr. Romana Klášterecká, Ph.D.



Převodní systém srdeční

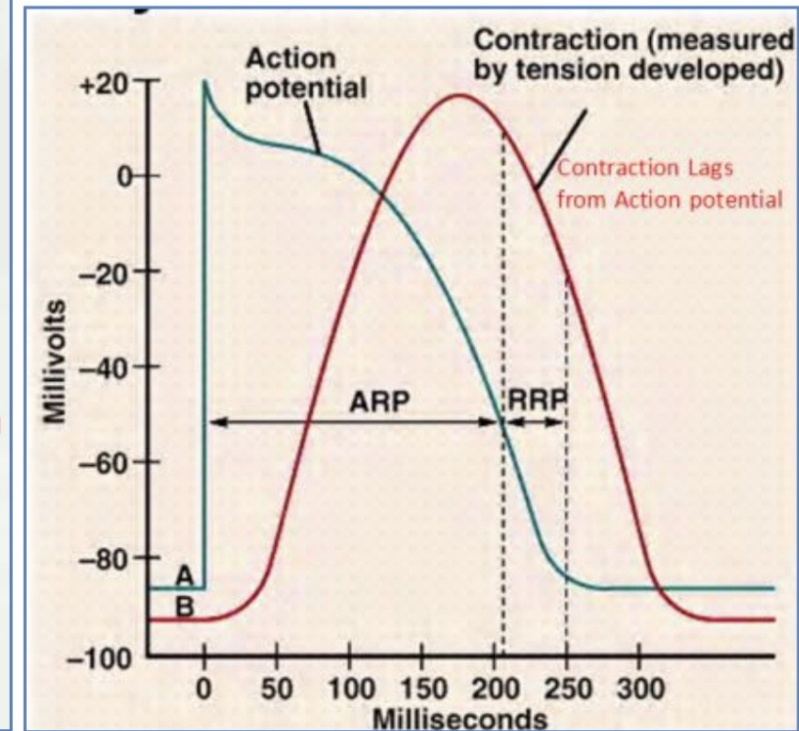
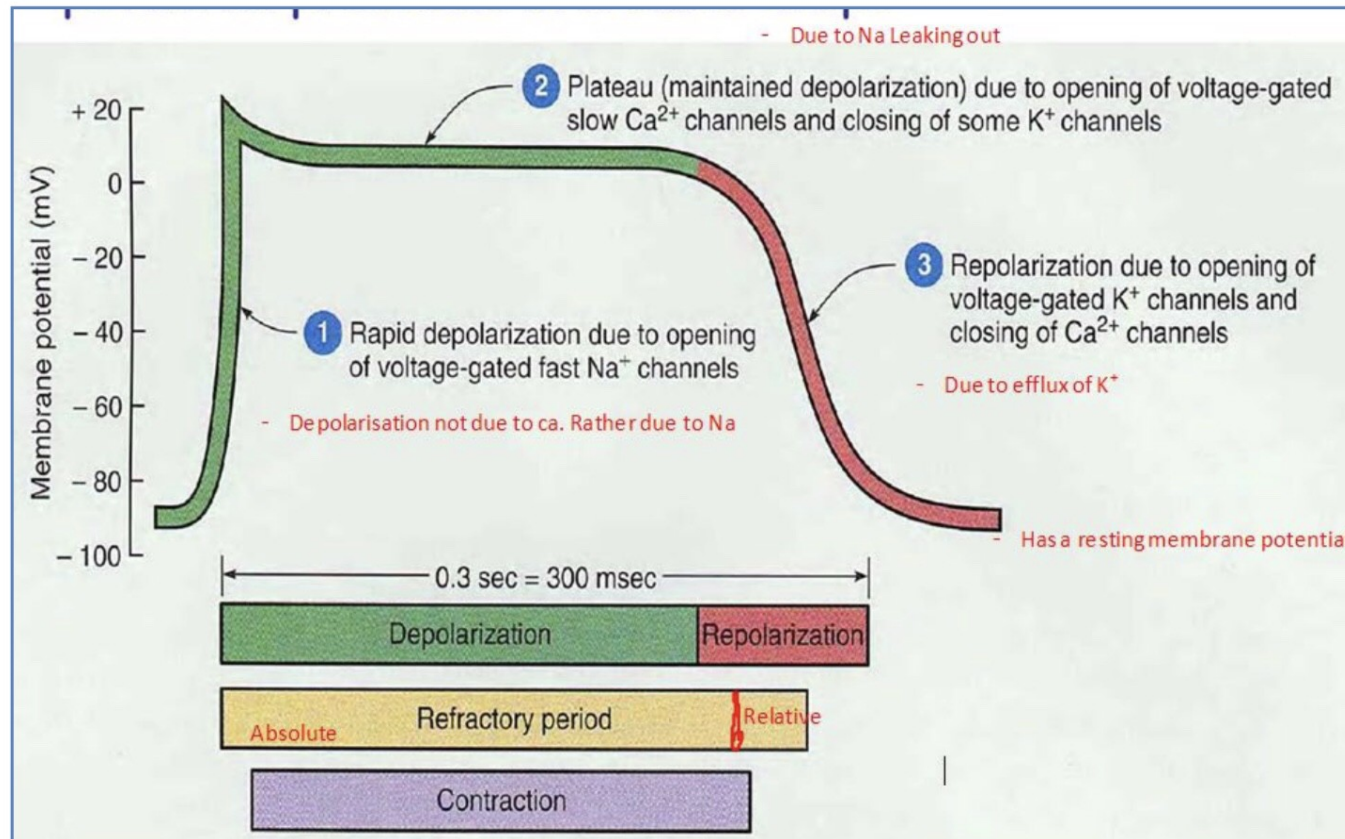


Kopírovat

Vybrat



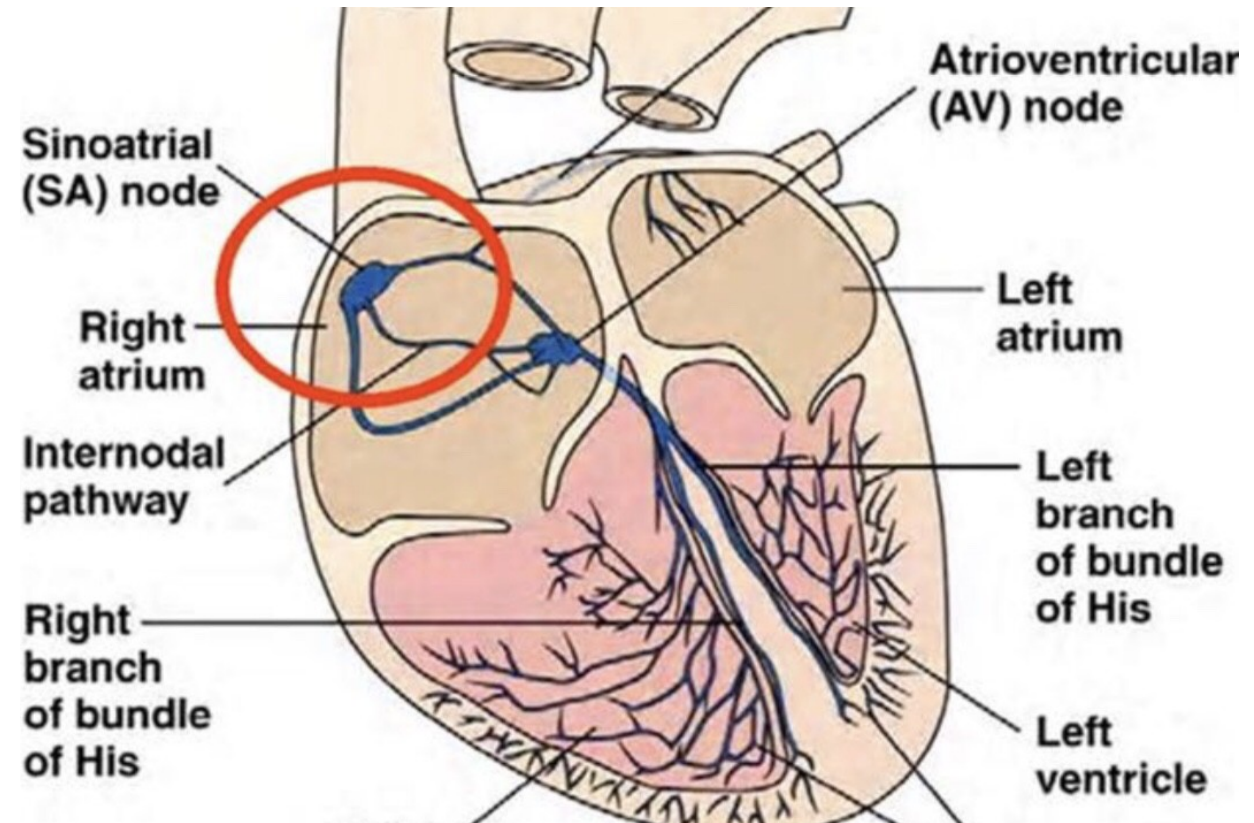
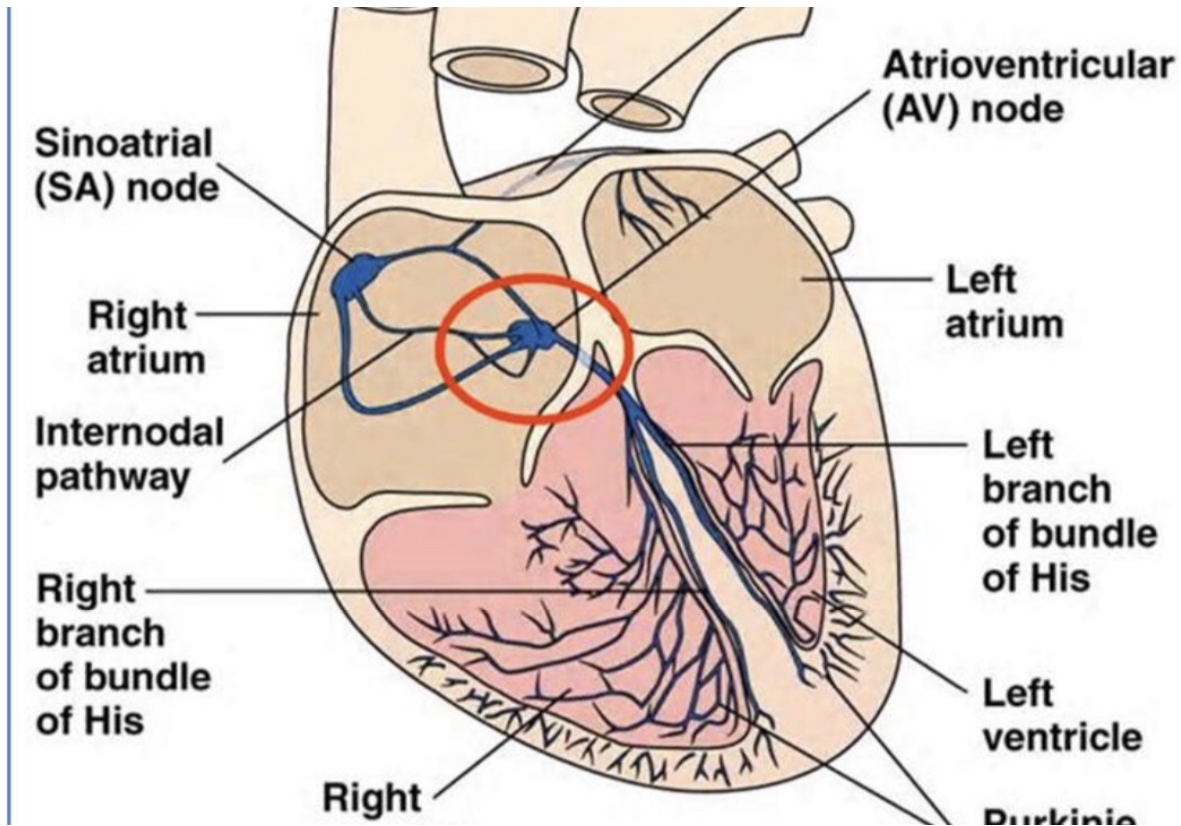
Akční membránový potenciál myokardiální buňky



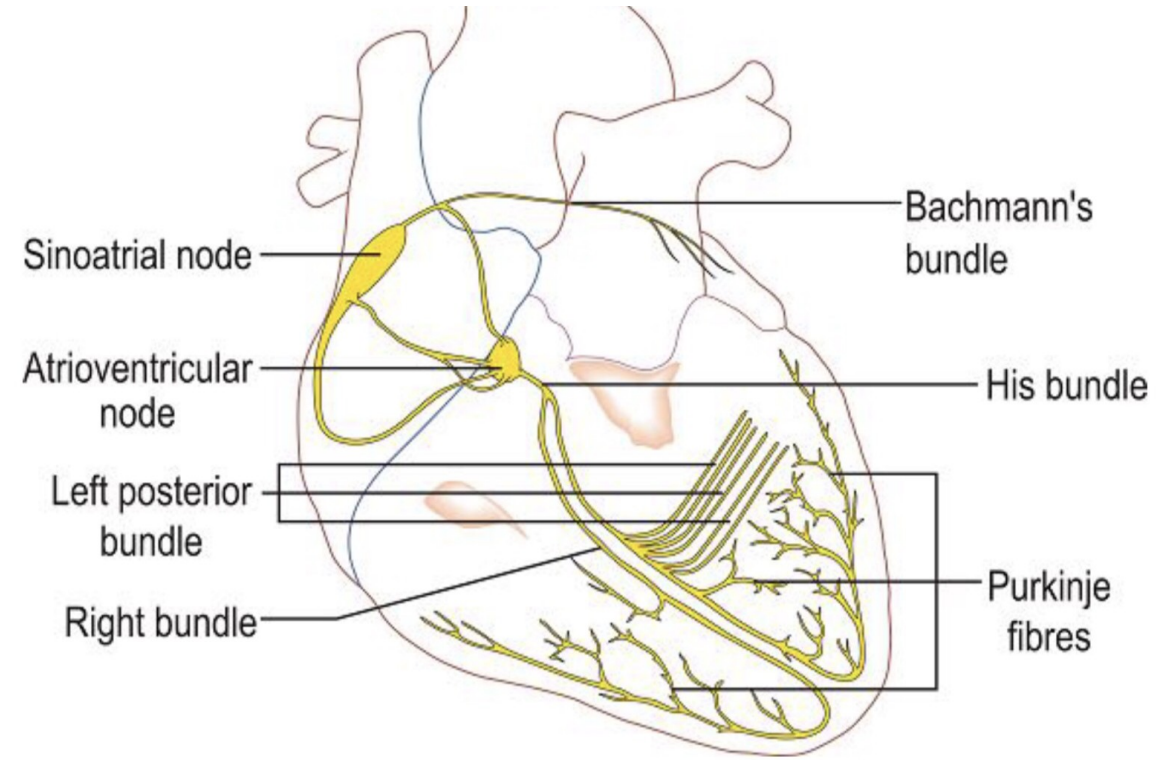
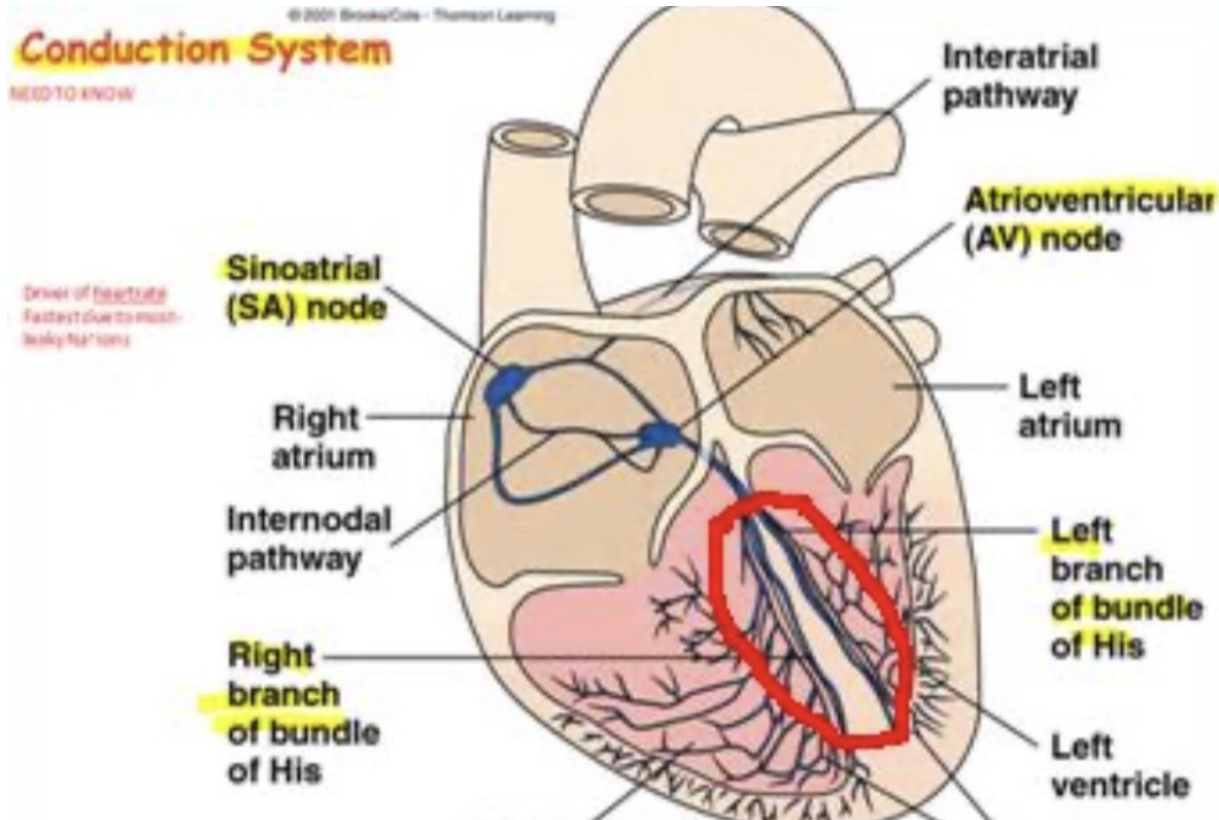
NOTE: There is a considerable delay between Myocardial Contraction & the Action Potential.



Převodní systém srdeční



Převodní systém srdeční



Šíření vzruchu srdcem a EKG křivka

P – Wave:

- Depolarisation of the Atria
- Presence of this waves indicates the SA Node is working



PR-Segment:

- Reflects the delay between SA Node & AV Node.
- Atrial Contraction is occurring at this time.



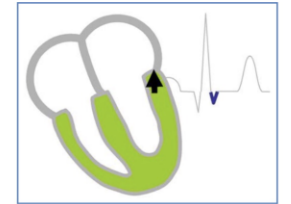
Q – Wave:

- Interventricular Septum Depolarisation
- Wave direction (see blue arrow) is perpendicular to the Main Electrical Axis → results in a 'Biphasic' trace.
 - Only the -ve deflection is seen due to signal cancellation by Atrial Repolarisation.
 - Sometimes this wave isn't seen at all



S – Wave:

- Depolarisation of the Myocytes at the last of the Purkinje Fibres.
- Wave Direction (black arrow) opposes the Main Electrical Axis → Negative Deflection
- This wave is not always seen.



ST – Segment:

- Ventricular Contraction is occurring at this time.
 - Due to the lag between excitation & contraction.



T – Wave:

- Ventricular Repolarisation
- Positive deflection despite being a Repolarisation wave – because Repol. Waves travel in the opposite direction to Depol Waves.



