

# DIVOČINA

Nevyhnutná civilizačná potreba

JURAJ LUKÁČ

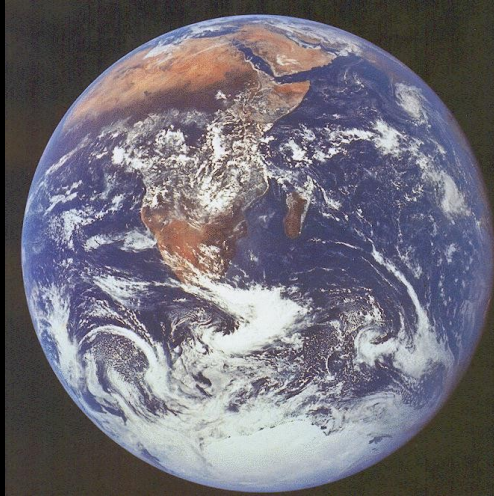


# ZEM a jej susedia

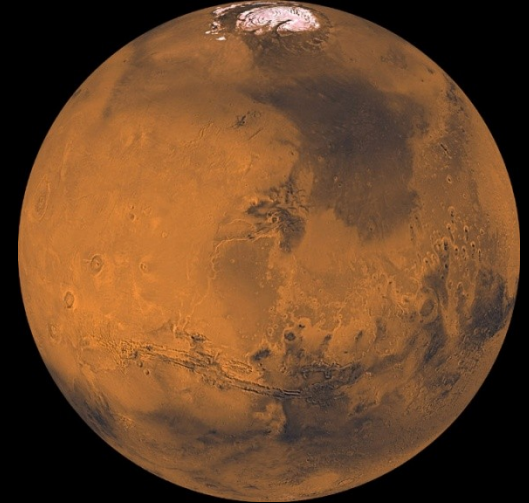
Venuša



Zem



Mars

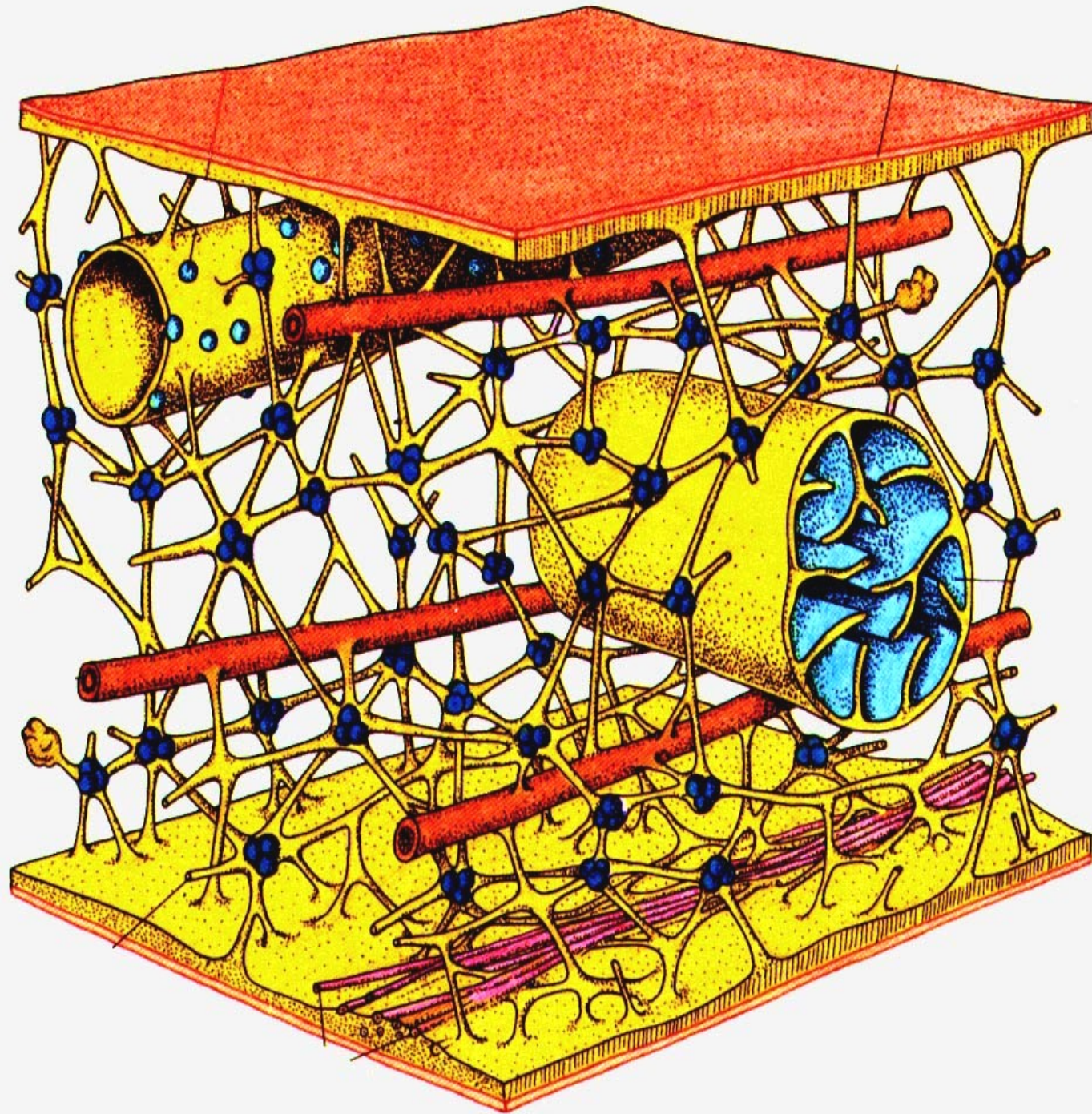


$\text{CO}_2$	98%	0,03%	95%
$\text{N}_2$	1,9%	79%	2,7%
$\text{O}_2$	0,001%	21%	0,13

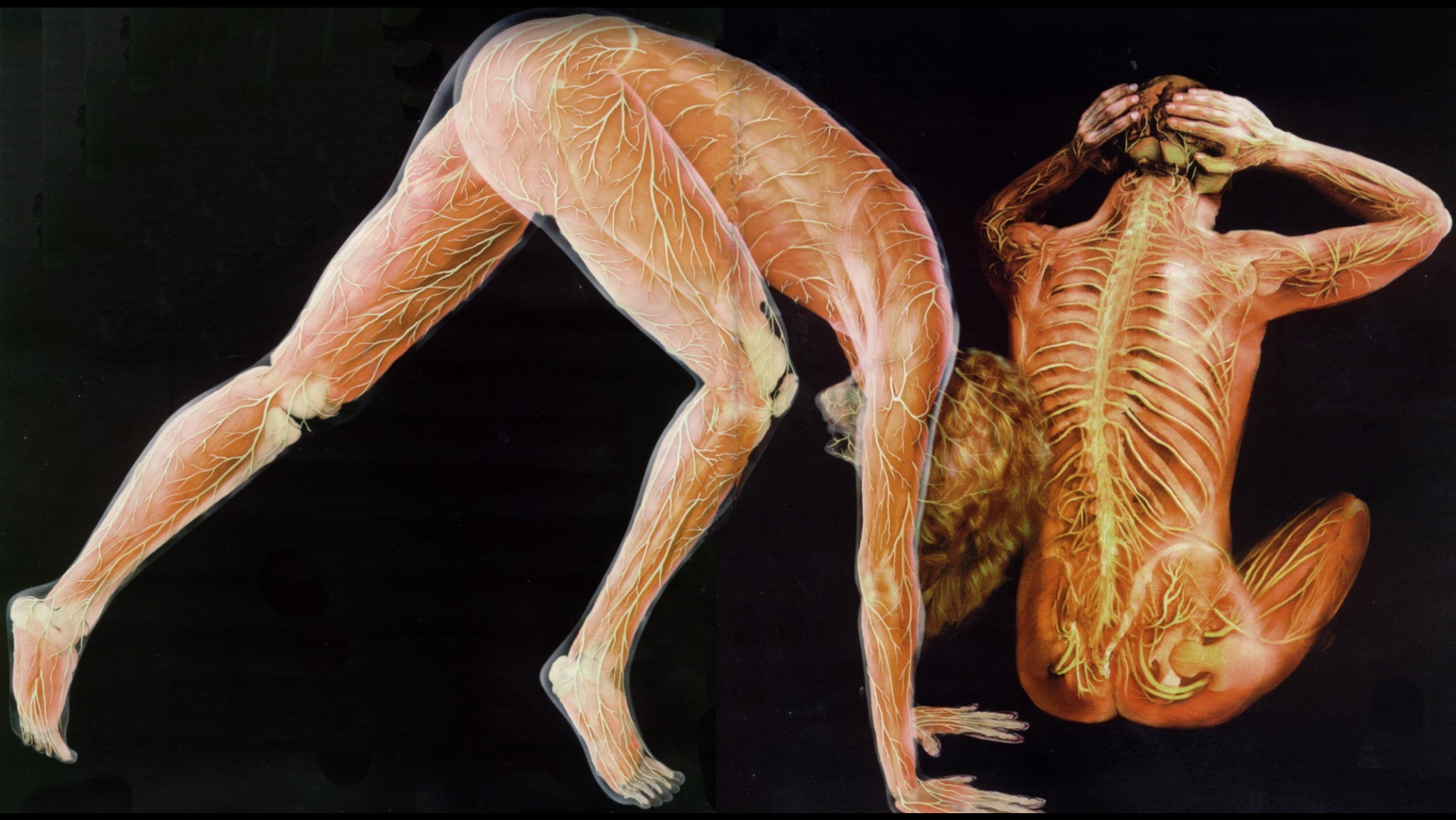
# ZLOŽITÝ ŽIVÝ SYSTÉM

- Baktérie –  $10^{21}$
- Jednobunkové organizmy –  $10^{17}$
- Chvostoskoky –  $6 \cdot 10^9$
- Mnohonožky –  $5 \cdot 10^6$
- Pavúkovce –  $10^6$
- Stonožky –  $10^6$
- Stavovce – 100



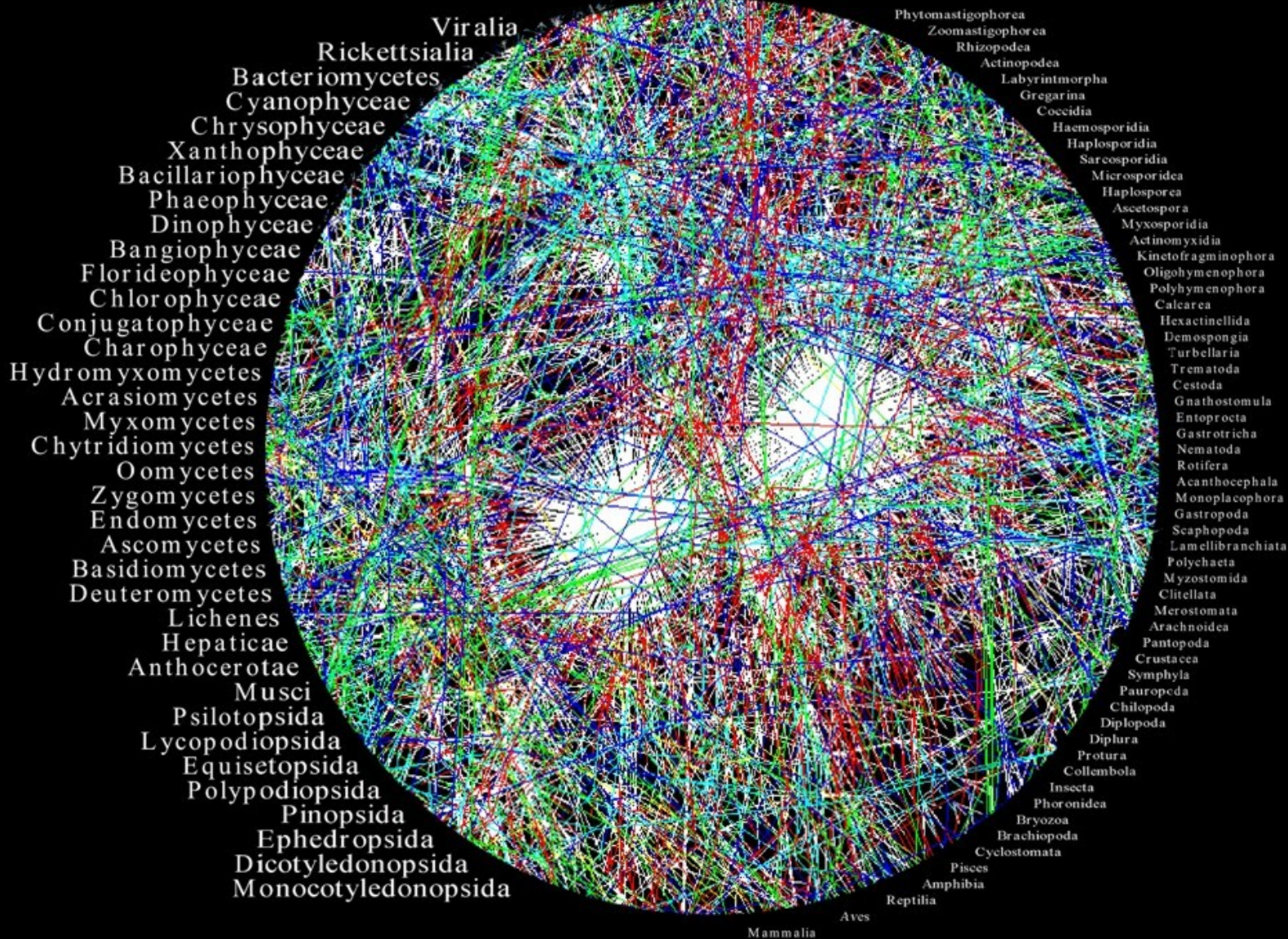




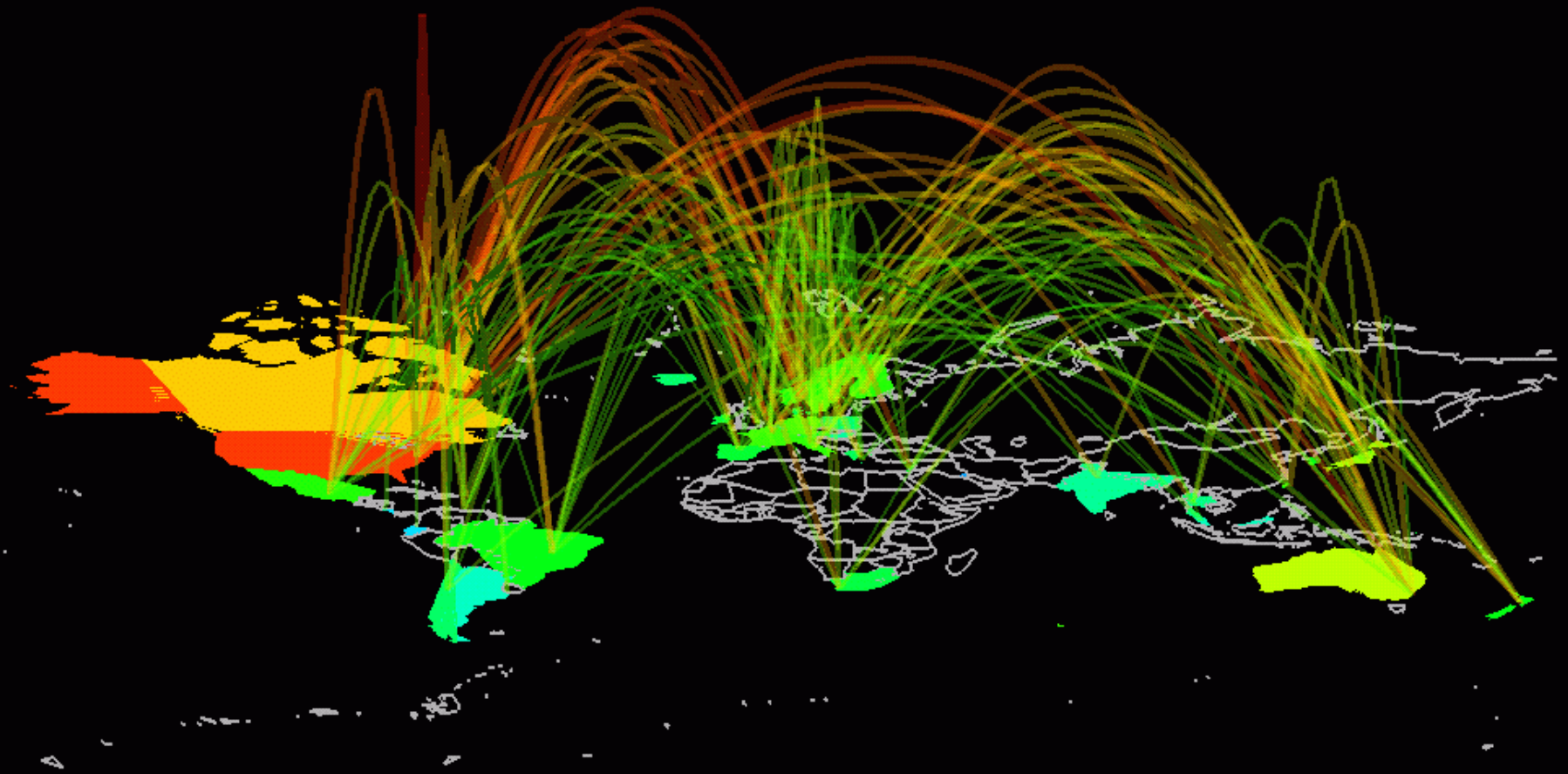


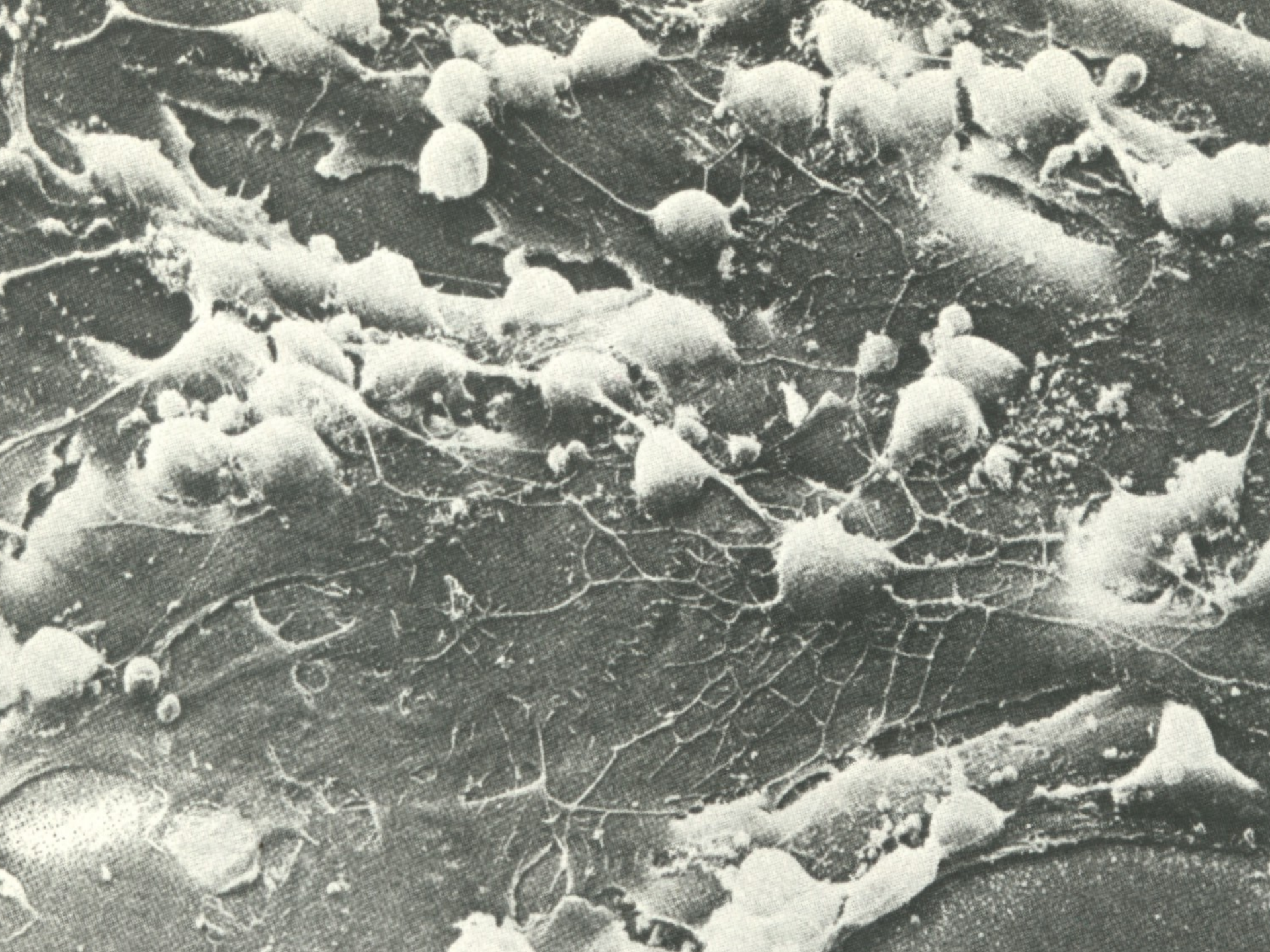








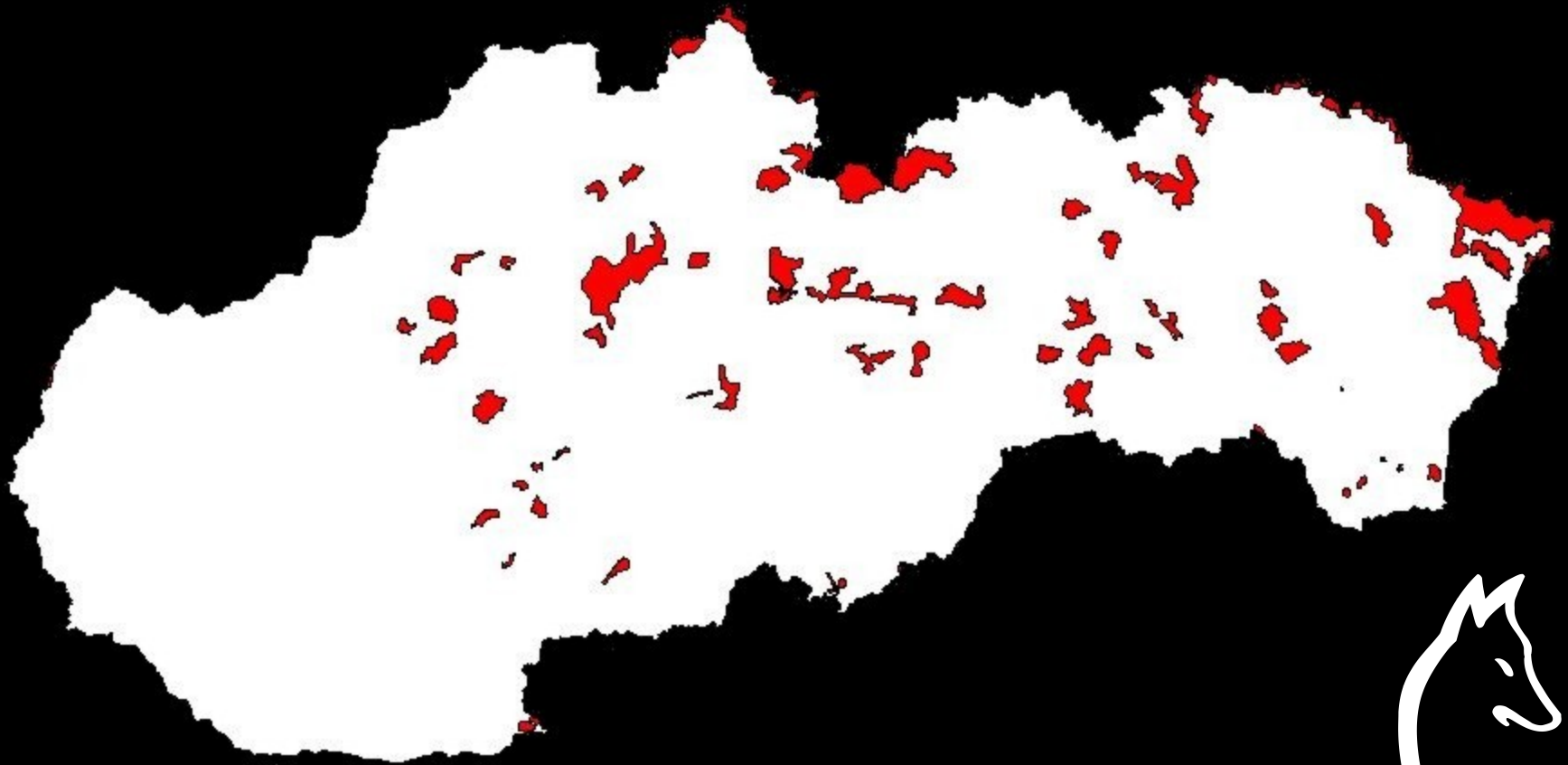








# EVOLUČNÉ<sup>®</sup> LESY



90 : 10



# Súkromná prírodná rezervácia VLČIA





# Súkromná prírodná rezervácia RYSIA



# Národná prírodná rezervácia Suchá dolina



# Prírodná rezervácia UDAVA



# Súkromná rezervácia BISCE





# THE END ?



Foto: Juraj Lukáč



*Figure 6. Willow along Blacktail Creek in spring 1996 (left) and summer 2002 (right). Following a 70-year period of wolf extirpation, heavy browsing of willows and conifers is evident in the 1996 photograph. In 2002, after 7 years of wolf recovery, willows show evidence of release from browsing pressure (increases in density and height). Photographs: left, Yellowstone National Park; right, William J. Ripple.*

# Klasický mor ošípaných a prirodzený biotop (výskyt vlka)

V rokoch 1990 - 1996 utratených **96 817** kusov ošípaných!

