

CCGT Economics

Capacity	MW	0
Load Factor	%	0%
Annual output	TWh	0.00
	MWh	0
	kW	0
Construction time	years	3
Project life	years	20

Summary f
NPV
IRR

Fuel

Efficiency		0%
Fuel consumed	MWh	#DIV/0!
Gas cost	US\$/mmbtu	0
	US\$/MWh	0.00
<i>Convert mmbtu to MWh</i>	<i>3.413</i>	

US\$=€1

EIA Estimates

Capital Cost	US\$/kW	978	0 US\$mm
Fixed Cost	US\$/kW	11	0.00 US\$mm
Variable Costs	US\$/MWh	3.5	0.00 US\$mm
Gas Cost	US\$/MWh	0.00	#DIV/0! US\$mm

Carbon output per MWh	Tonnes	0.18
Carbon price	US\$/t	0.00

Corporate Tax Rate 0%

Electricity Price	US\$/MWh	0
Capacity Payment	US\$/kW	0

Project Economics

		2020	2021	2022	2023	2024
Utilisation					0%	0%
Output	MWh				0	0
Price	\$/MWh				0	0
Revenues	\$mm				0.0	0.0
Capacity Payment	\$mm				0.0	0.0
Capex	\$mm	-244.5	-244.5	-244.5		
Total	\$mm	-733.5				
Variable Cost	\$mm				0.0	0.0
Fixed Cost	\$mm				0.0	0.0
Fuel Cost	\$mm				#DIV/0!	#DIV/0!
Cost of Carbon	\$mm				#DIV/0!	#DIV/0!
Total Costs	\$mm				#DIV/0!	#DIV/0!
Operating Cashflow	€mm				#DIV/0!	#DIV/0!

Depreciation		20 years				-36.7	-36.7
Pre-tax profit	€mm					#DIV/0!	#DIV/0!
Corporation Tax		0%				#DIV/0!	#DIV/0!
Net Income	€mm					#DIV/0!	#DIV/0!
Post-tax Cashflow	€mm					#DIV/0!	#DIV/0!
Net Cashflow	€mm		-244.5	-244.5	-244.5	#DIV/0!	#DIV/0!
Cumulative Net Cashflow			-244.5	-489.0	-733.5	#DIV/0!	#DIV/0!
Discount Rate		1.75%					
Discount Factor		1	1.02	1.04	1.05	1.07	1.09
Discounted Cashflow	€mm		-240.3	-236.2	-232.1	#DIV/0!	#DIV/0!
NPV	€mm		#DIV/0!				
IRR	%		#HODNOTA!				

Payback (Years)

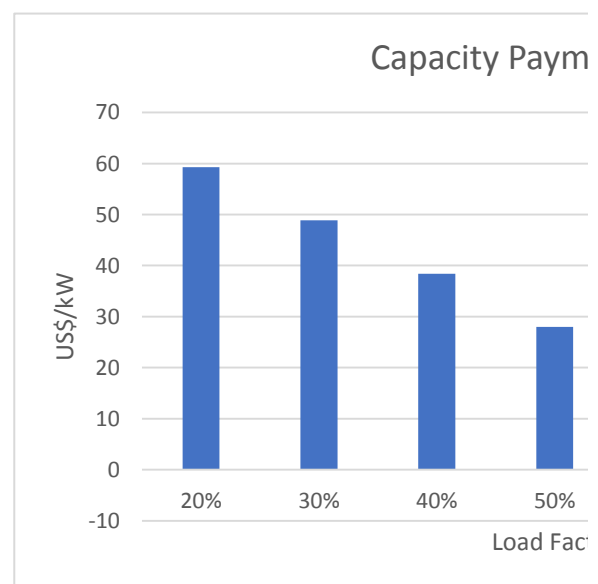
Breakeven Utilisation

Breakeven Gas Price

Breakeven Electricity Price

Breakeven Carbon Price

	Load Factor					
	20%	30%	40%	50%	60%	70%
Capacity Payment	59.27	48.85	38.43	28.01	17.59	7.17



Results
#DIV/0!
#####

1.13

€mm

0

0

0

#DIV/0!

2025	2026	2027	2028	2029	2030	2031	2032	2033
0%	0%	0%	0%	0%	0%	0%	0%	0%
0	0	0	0	0	0	0	0	0
0	0	0	0	0	0	0	0	0
0.0	0.0	0.0	0.0	0.0	0.0	0.0	0.0	0.0
0.0	0.0	0.0	0.0	0.0	0.0	0.0	0.0	0.0

0.0	0.0	0.0	0.0	0.0	0.0	0.0	0.0	0.0
0.0	0.0	0.0	0.0	0.0	0.0	0.0	0.0	0.0

#DIV/0! #DIV/0! #DIV/0! #DIV/0! #DIV/0! #DIV/0! #DIV/0! #DIV/0! #DIV/0!
#DIV/0! #DIV/0! #DIV/0! #DIV/0! #DIV/0! #DIV/0! #DIV/0! #DIV/0! #DIV/0!
#DIV/0! #DIV/0! #DIV/0! #DIV/0! #DIV/0! #DIV/0! #DIV/0! #DIV/0! #DIV/0!
#DIV/0! #DIV/0! #DIV/0! #DIV/0! #DIV/0! #DIV/0! #DIV/0! #DIV/0! #DIV/0!

-36.7 -36.7 -36.7 -36.7 -36.7 -36.7 -36.7 -36.7 -36.7

#DIV/0! #DIV/0! #DIV/0! #DIV/0! #DIV/0! #DIV/0! #DIV/0! #DIV/0! #DIV/0!

#DIV/0! #DIV/0! #DIV/0! #DIV/0! #DIV/0! #DIV/0! #DIV/0! #DIV/0! #DIV/0!

#DIV/0! #DIV/0! #DIV/0! #DIV/0! #DIV/0! #DIV/0! #DIV/0! #DIV/0! #DIV/0!

#DIV/0! #DIV/0! #DIV/0! #DIV/0! #DIV/0! #DIV/0! #DIV/0! #DIV/0! #DIV/0!

#DIV/0! #DIV/0! #DIV/0! #DIV/0! #DIV/0! #DIV/0! #DIV/0! #DIV/0! #DIV/0!

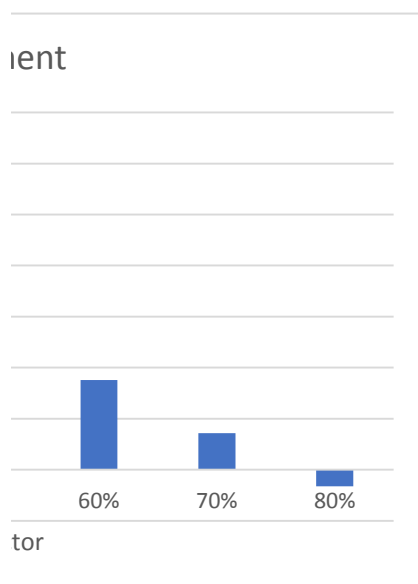
#DIV/0! #DIV/0! #DIV/0! #DIV/0! #DIV/0! #DIV/0! #DIV/0! #DIV/0! #DIV/0!

1.11 1.13 1.15 1.17 1.19 1.21 1.23 1.25 1.27

#DIV/0! #DIV/0! #DIV/0! #DIV/0! #DIV/0! #DIV/0! #DIV/0! #DIV/0! #DIV/0!

80%

-3.25



-36.7 -36.7 -36.7 -36.7 -36.7 -36.7 -36.7 -36.7 -36.7

#DIV/0! #DIV/0! #DIV/0! #DIV/0! #DIV/0! #DIV/0! #DIV/0! #DIV/0! #DIV/0!

#DIV/0! #DIV/0! #DIV/0! #DIV/0! #DIV/0! #DIV/0! #DIV/0! #DIV/0! #DIV/0!

#DIV/0! #DIV/0! #DIV/0! #DIV/0! #DIV/0! #DIV/0! #DIV/0! #DIV/0! #DIV/0!

#DIV/0! #DIV/0! #DIV/0! #DIV/0! #DIV/0! #DIV/0! #DIV/0! #DIV/0! #DIV/0!

#DIV/0! #DIV/0! #DIV/0! #DIV/0! #DIV/0! #DIV/0! #DIV/0! #DIV/0! #DIV/0!

#DIV/0! #DIV/0! #DIV/0! #DIV/0! #DIV/0! #DIV/0! #DIV/0! #DIV/0! #DIV/0!

1.30 1.32 1.34 1.37 1.39 1.41 1.44 1.46 1.49

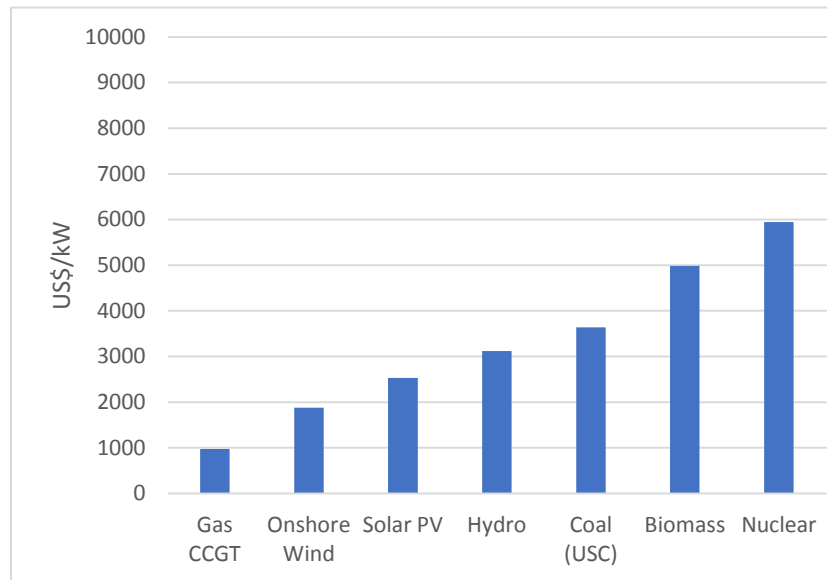
#DIV/0! #DIV/0! #DIV/0! #DIV/0! #DIV/0! #DIV/0! #DIV/0! #DIV/0! #DIV/0!

WACC

Cost of Equity	
20-year return	10.53%
Risk Free Rate	1.75%
Beta	0
Cost of Equity	1.75%
Interest Rate	0.00%
Tax Rate	20%
Cost of Debt	0.00%
WACC	1.75%
% Debt	0%
% Equity	100%

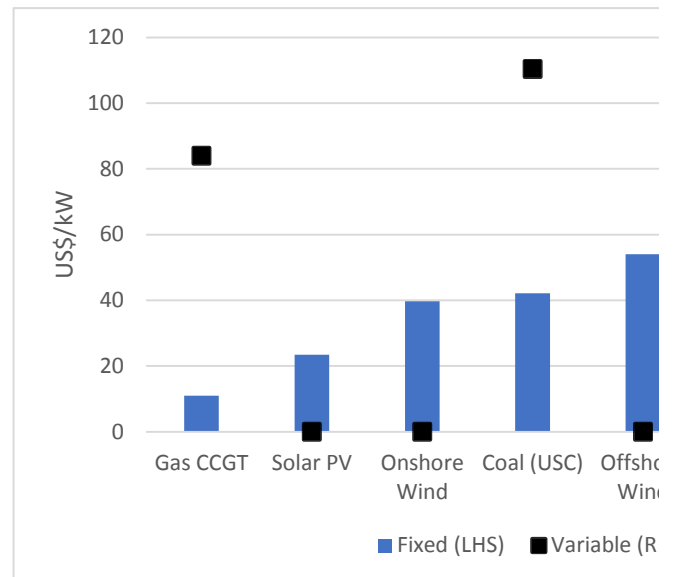
Capital Costs

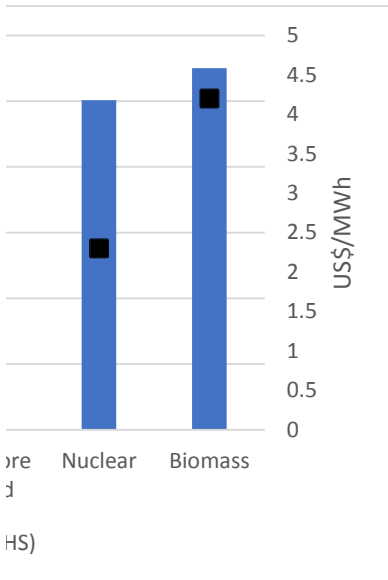
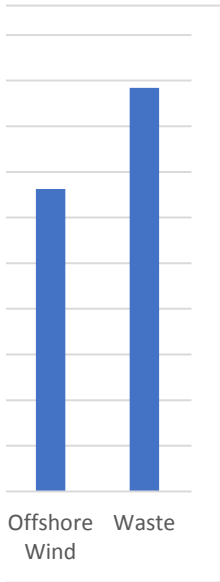
	US\$/kW
Gas CCGT	978
Onshore Wind	1877
Solar PV	2534
Hydro	3123
Coal (USC)	3636
Biomass	4985
Nuclear	5945
Offshore Wind	6628
Waste	8843



Operating Costs

	Fixed (LHS)	Variable (RHS)
Gas CCGT	11	3.5
Solar PV	23.4	0
Onshore Wind	39.7	0
Coal (USC)	42.1	4.6
Offshore Wind	54	0
Nuclear	100.3	2.3
Biomass	110	4.2





2.205

Pounds per mmBtu Tonnes per Tonnes per MWh

Gas	117.0	0.053	0.181
Gasoline	157.2	0.071	0.243
Diesel	161.3	0.073	0.250
Lignite	215.4	0.098	0.333
Coal	228.6	0.104	0.354

