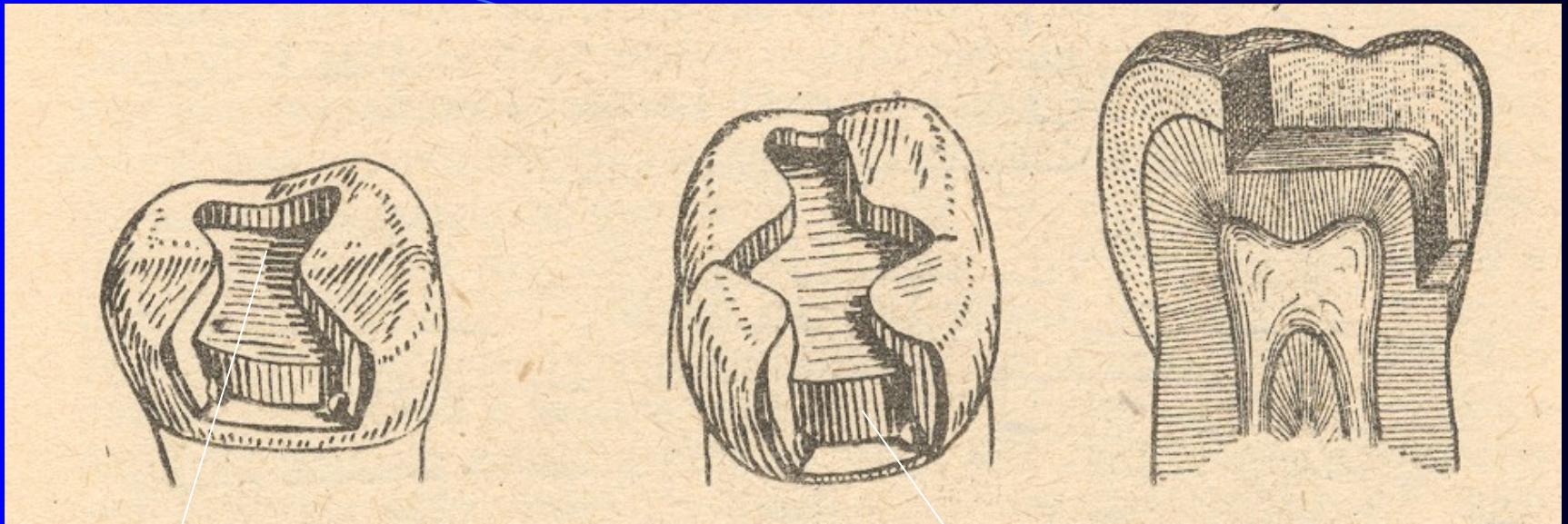


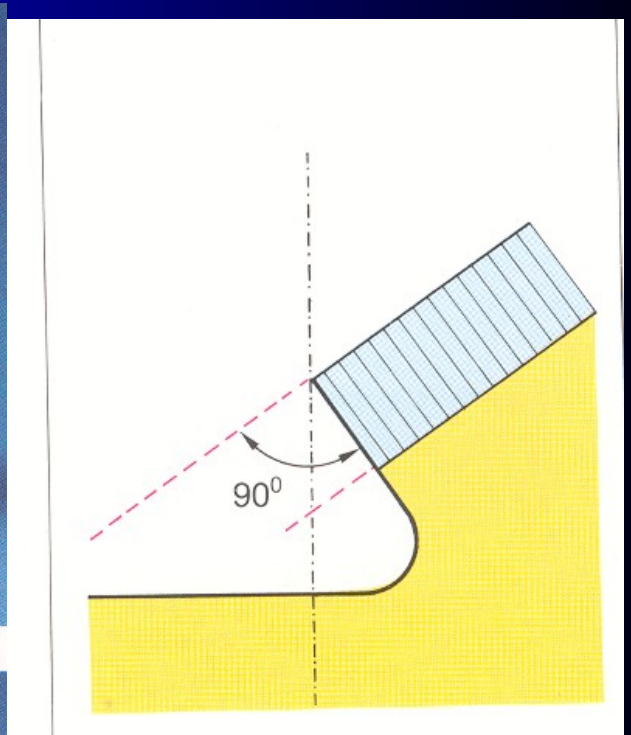
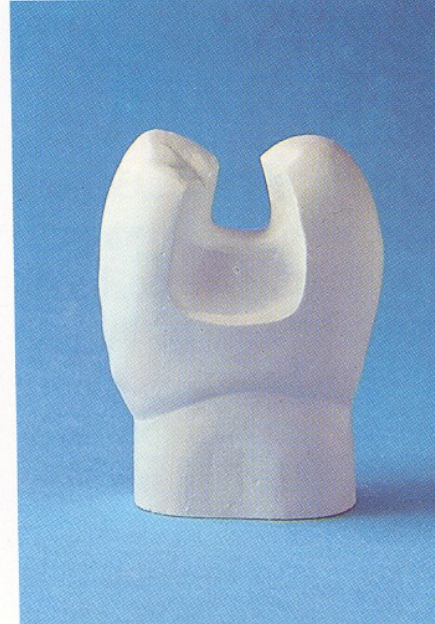
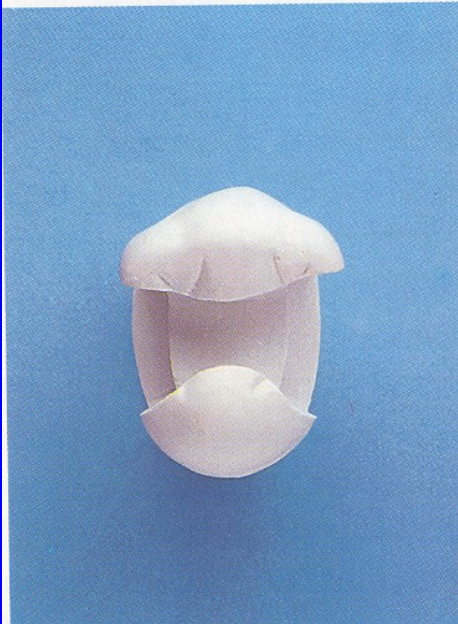
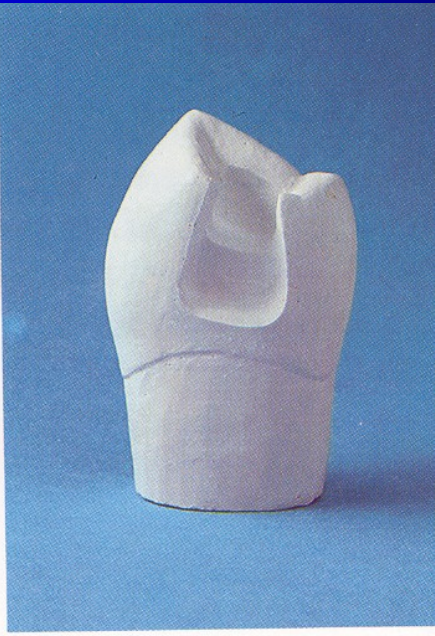
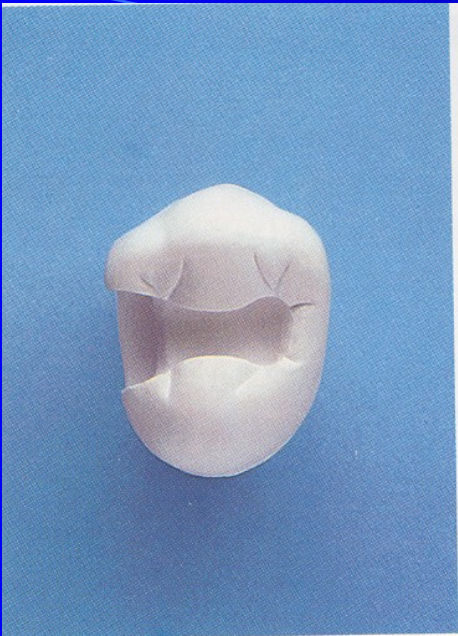
Class II. - modifications

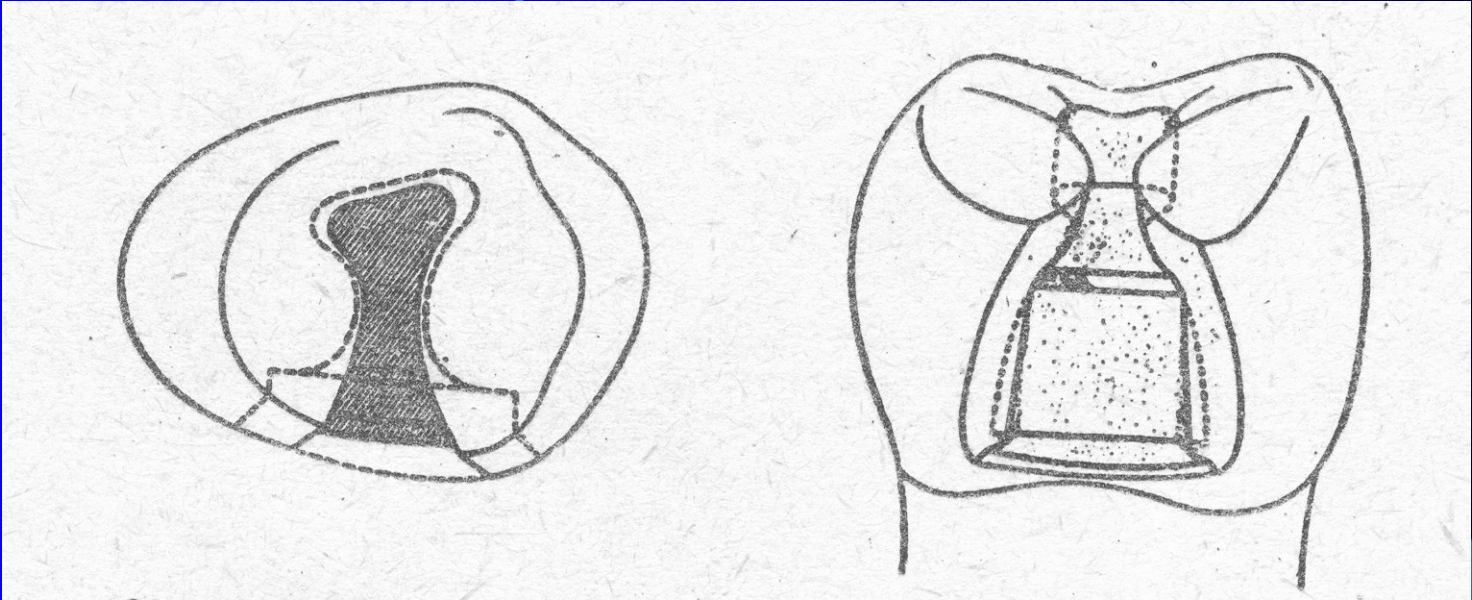
- Compound cavity
- Slot
- large restoration with the replacement of cusps

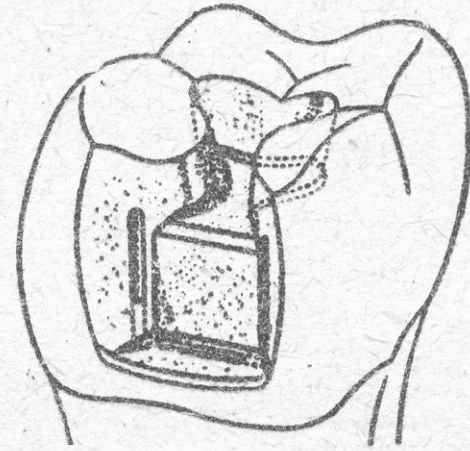
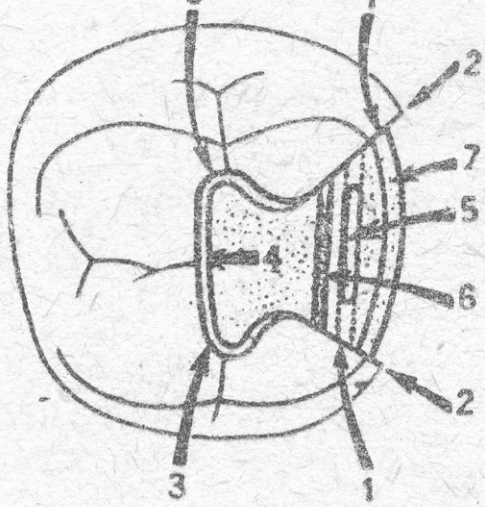


Occlusal cavity

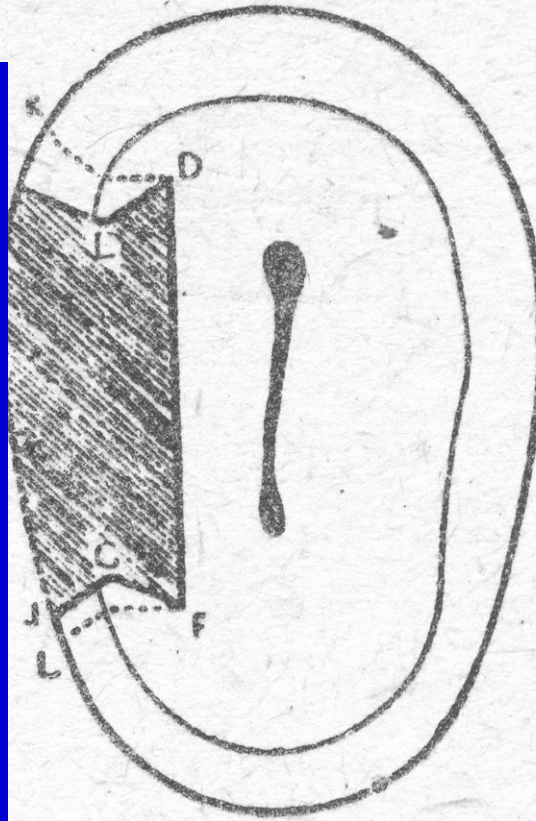
Proximal cavity

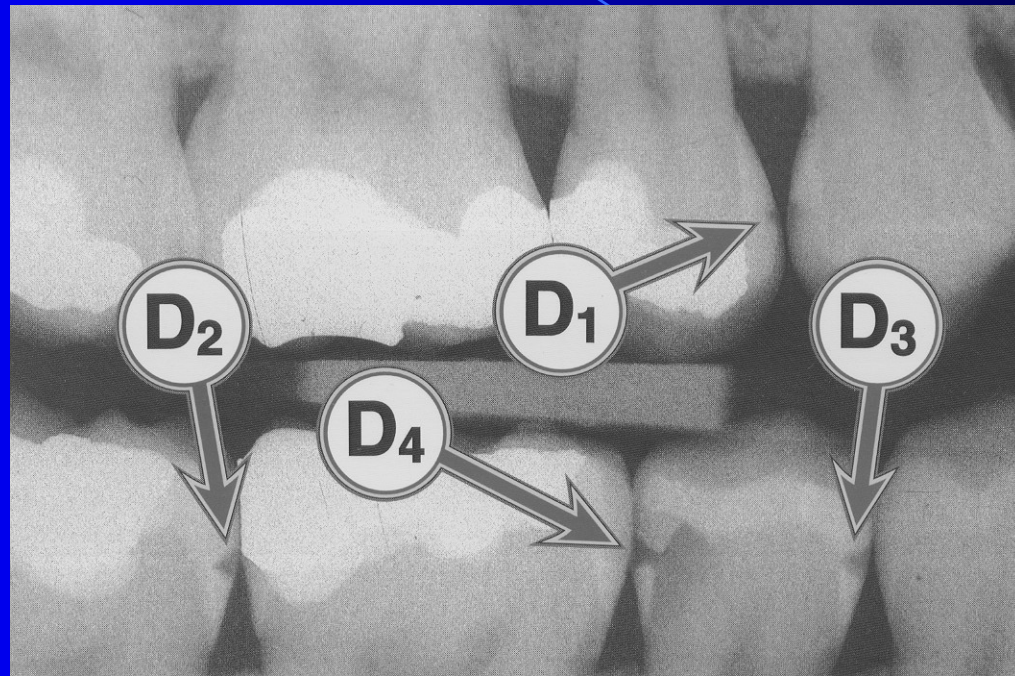




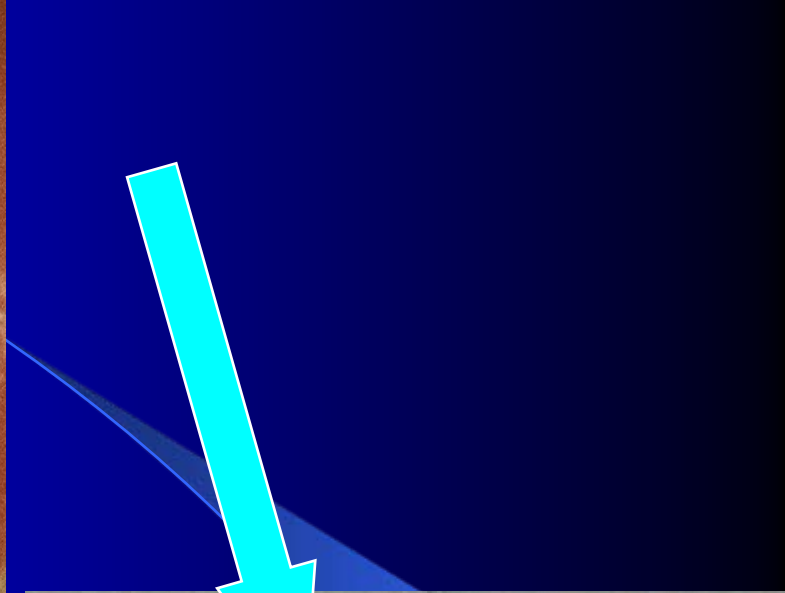


Obv. 114. W. 1

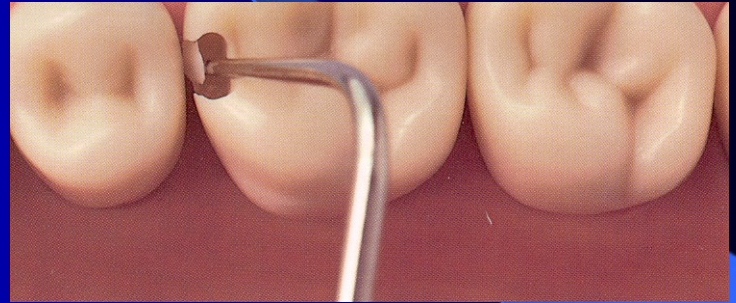


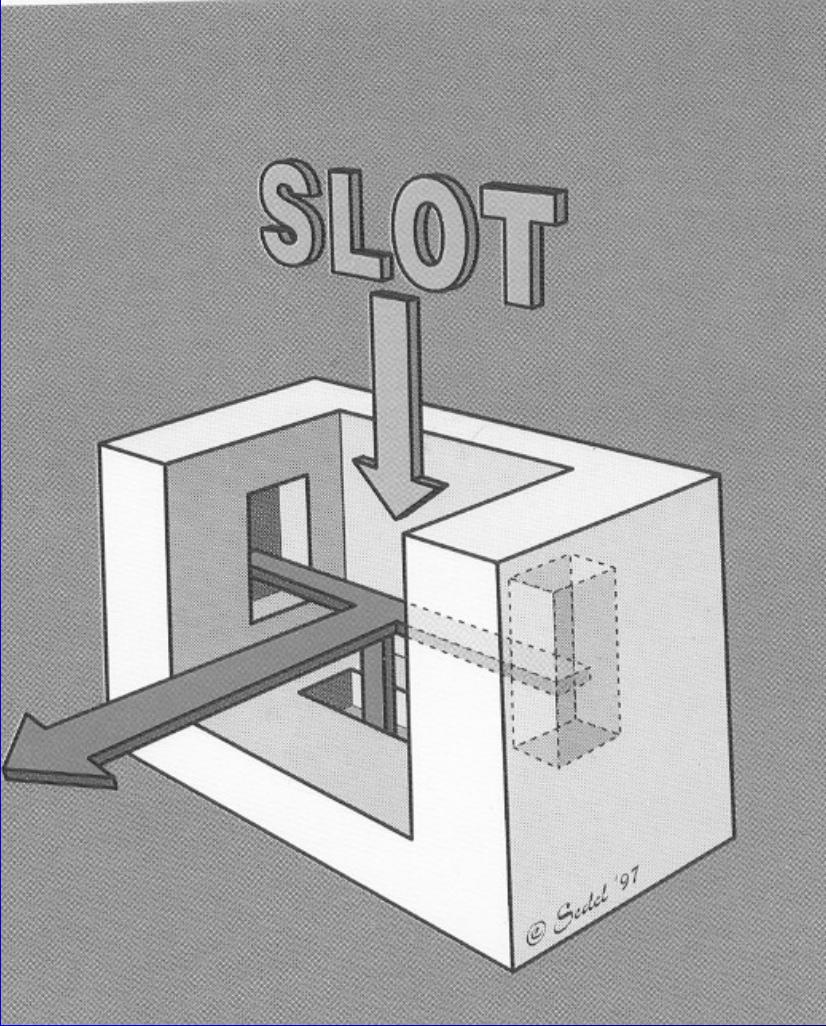


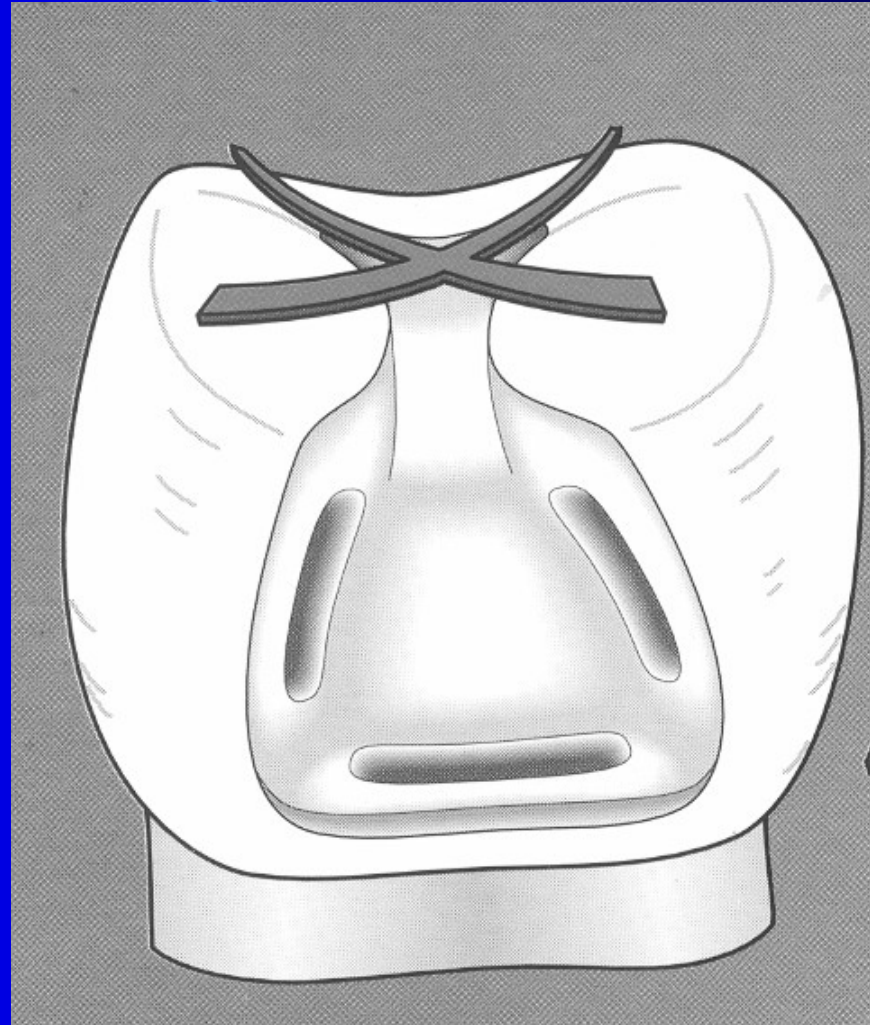




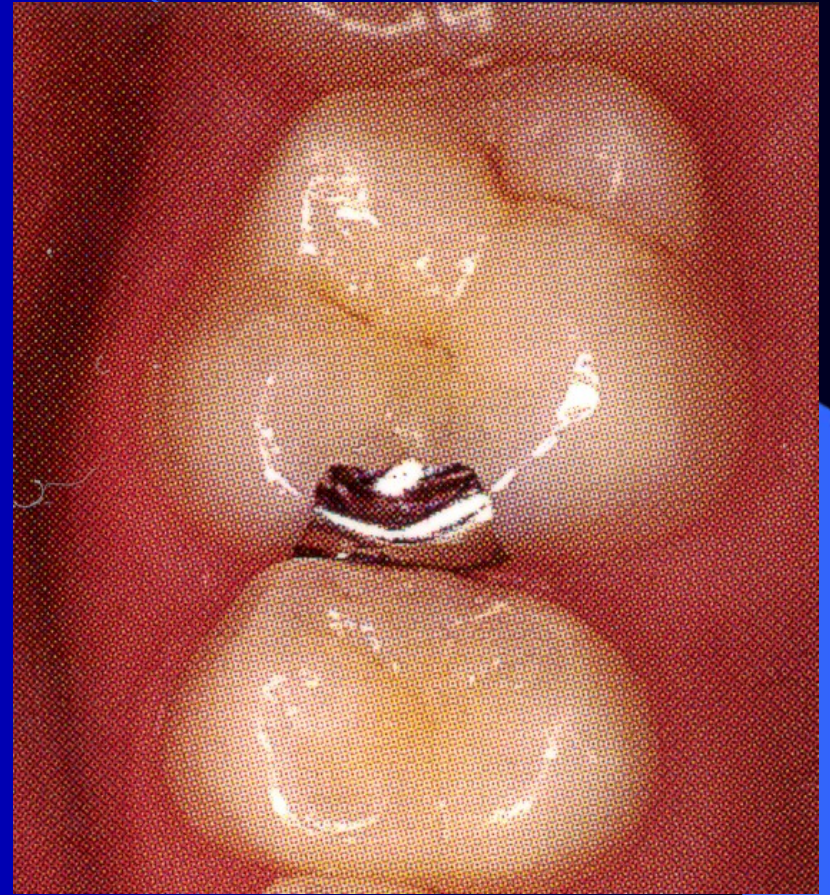
Access to the cavity







Slot is a cavity without any preparation on occlusal surface



Slot for amalgam

- Access to the caries lesion
 - go through the enamel wall
 - breaking out of the enamel lamella
 - excavation of carious dentin

Slot

- Autoretention
- Rule of the gingival wall

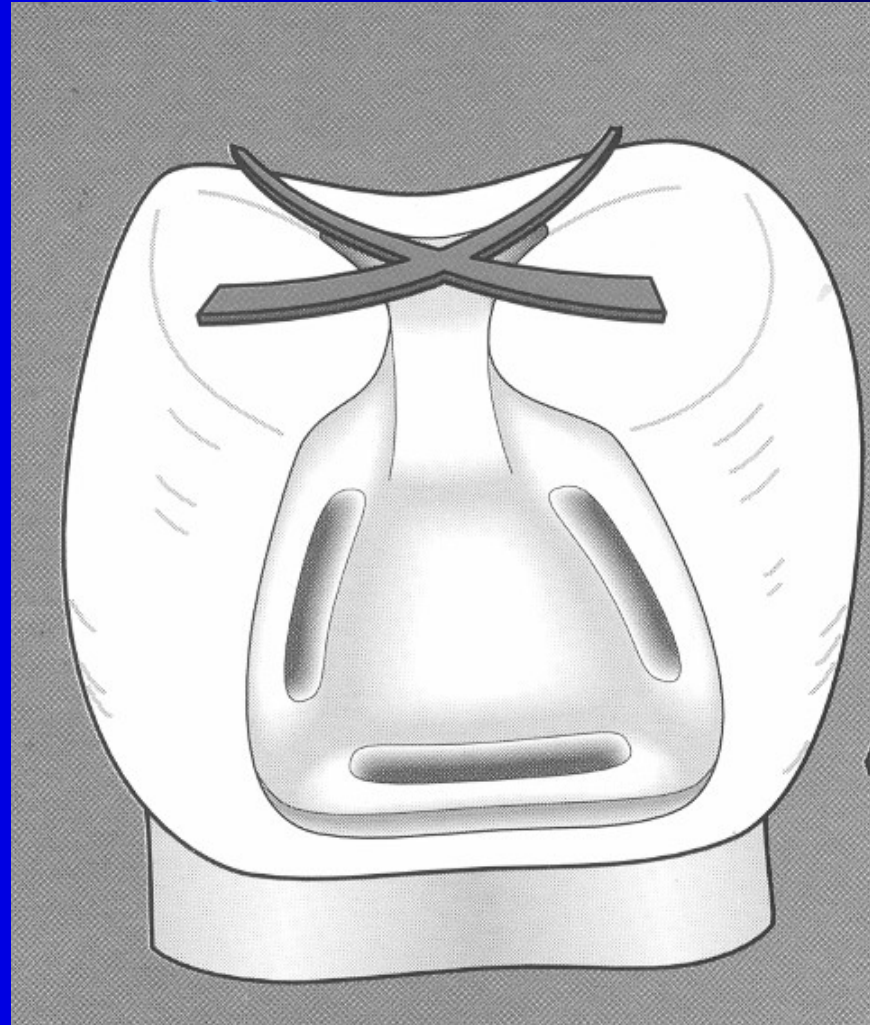
Slot

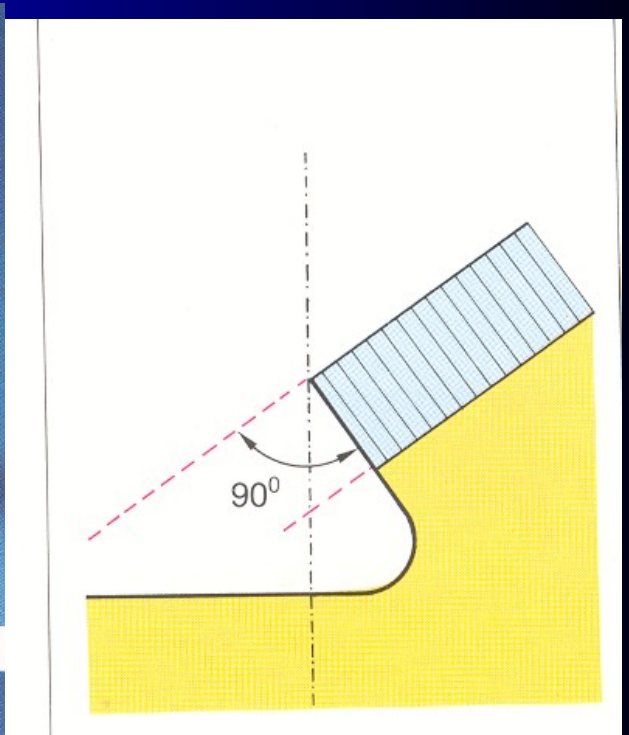
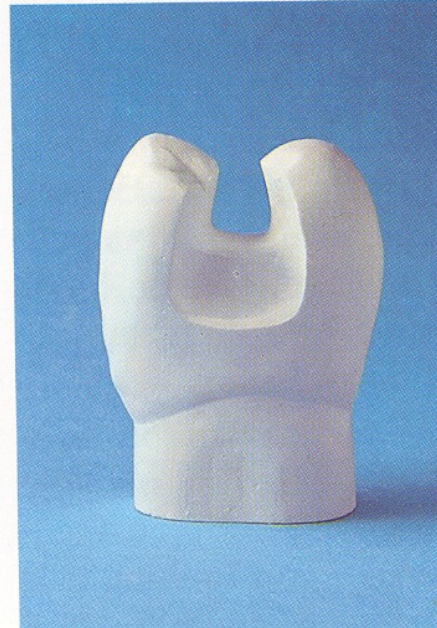
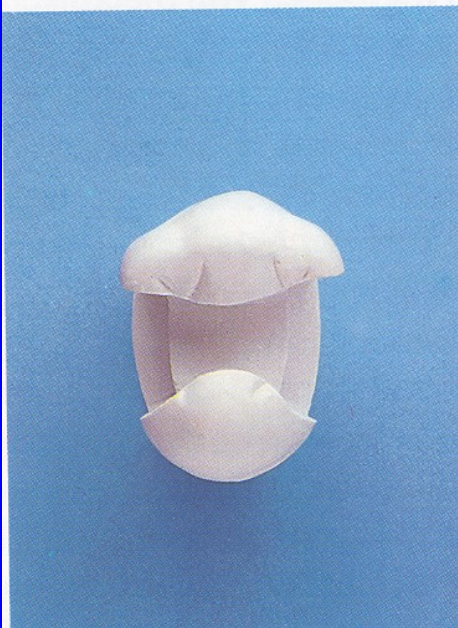
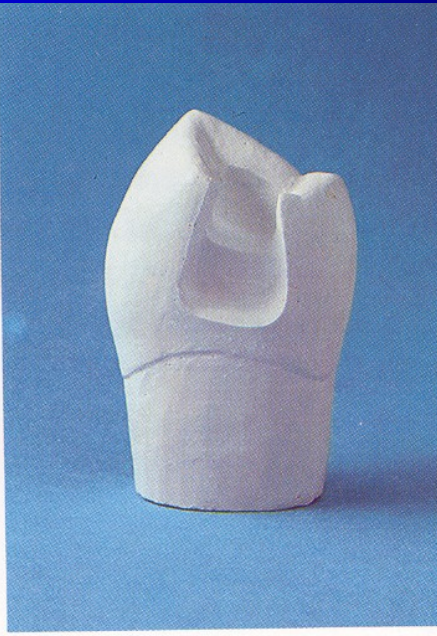
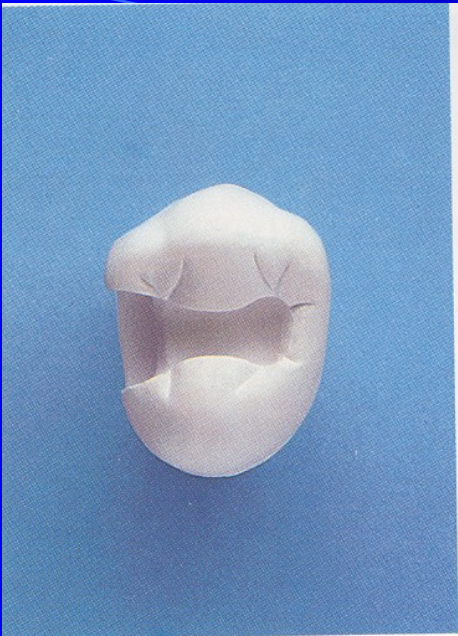
- Autoretention
 - Grooves
 - Divergency towards gingiva
 - Convergency and divergency
- Rule of the gingival wall

Slot

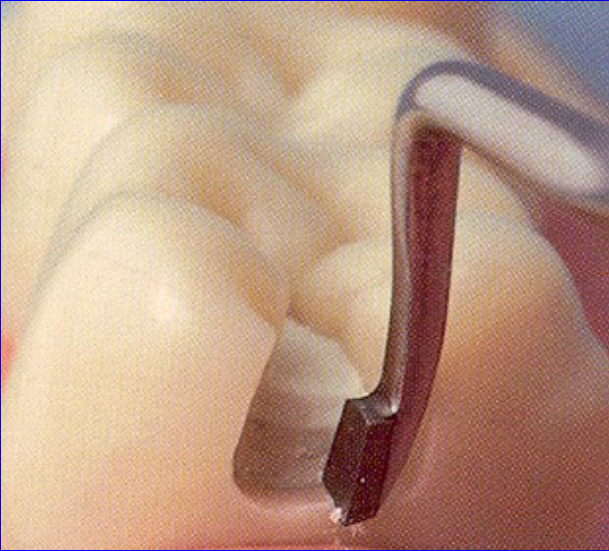
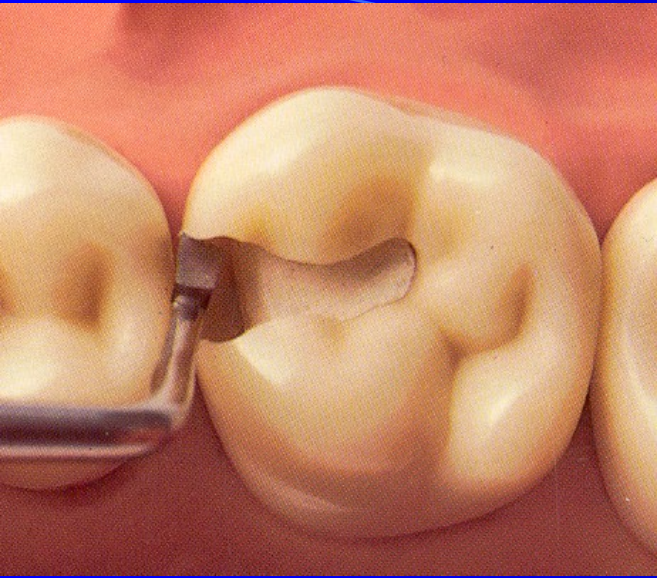
- Rule of the gingival wall

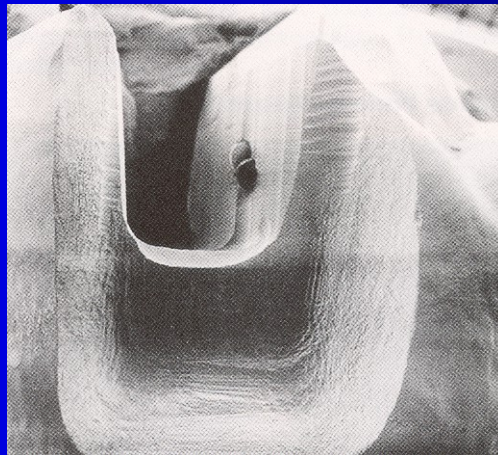
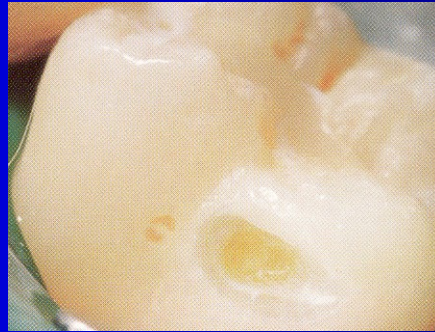
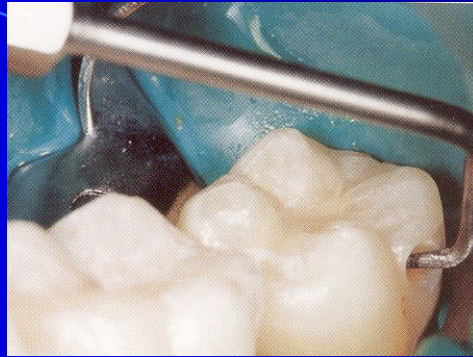
90° angle towards the pulpal wall
outer line beveled if in enamel
horizontal groove



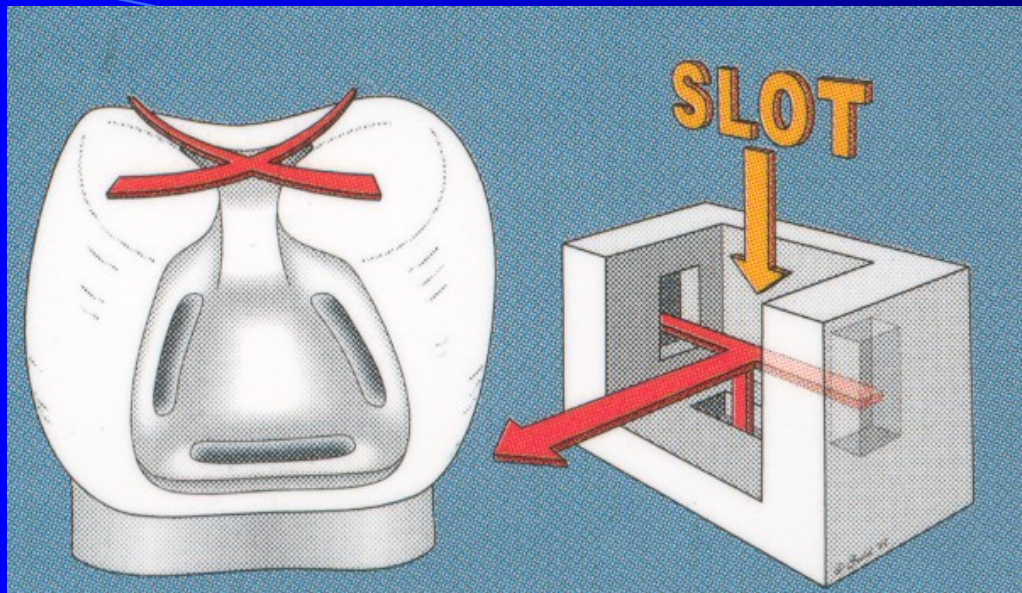






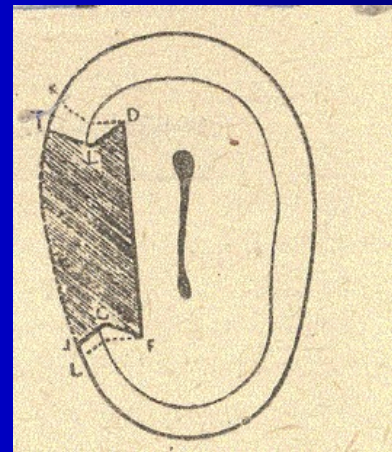
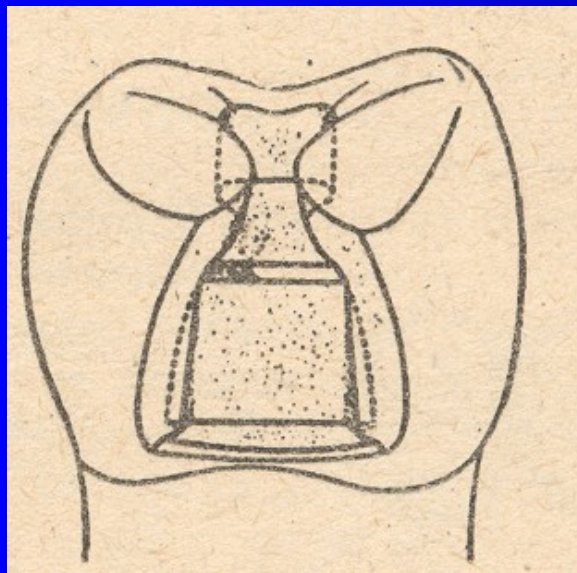






Sedelmayer

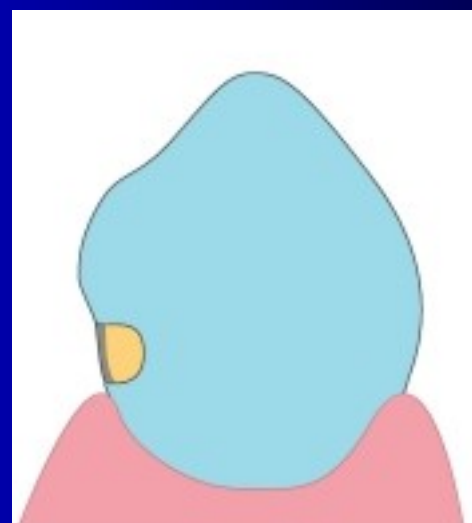
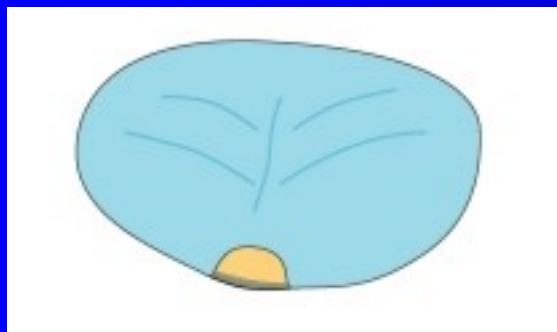
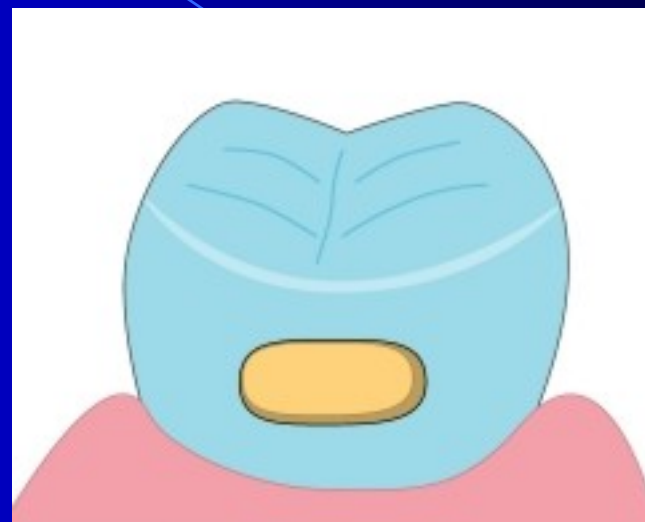
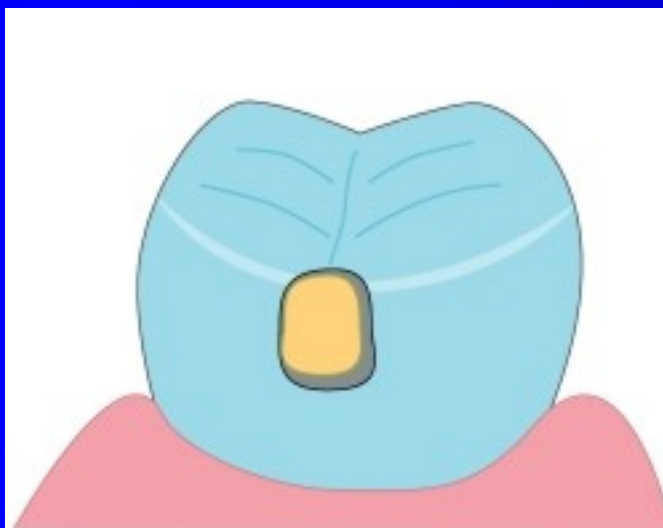
*Sedelmayer J. Amalgám – zapomenuté řemeslo.
Brno, 2000.*

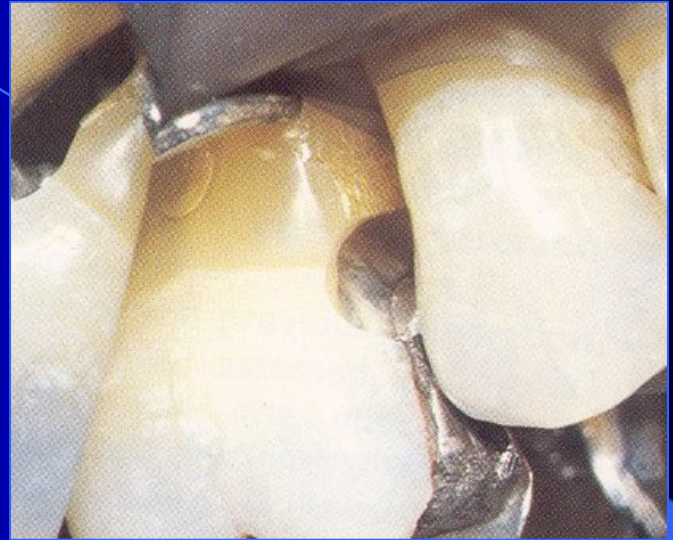


Bažant V.

Konservační zubní lékařství, SPN Praha, 1962.

Adhezivní slotová preparace

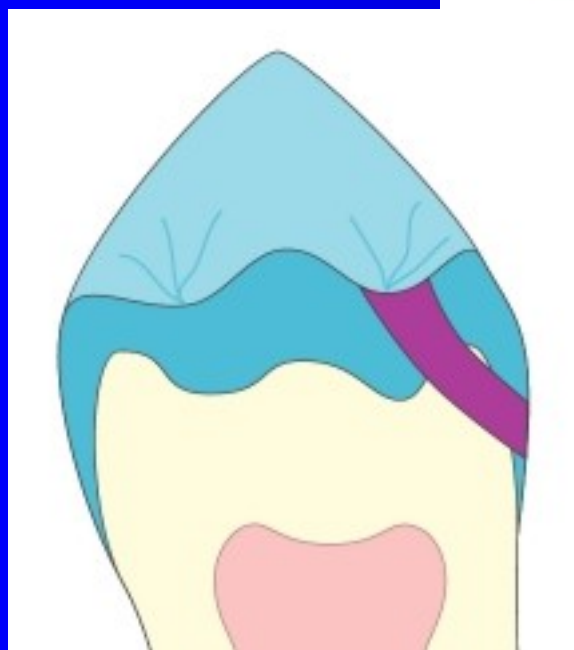
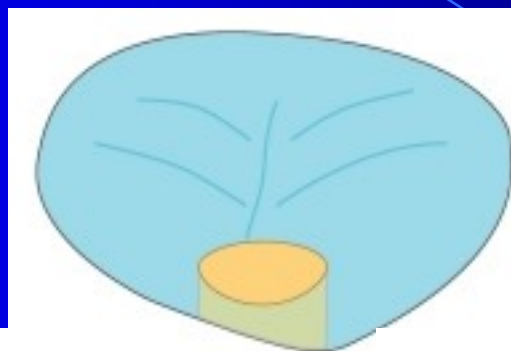




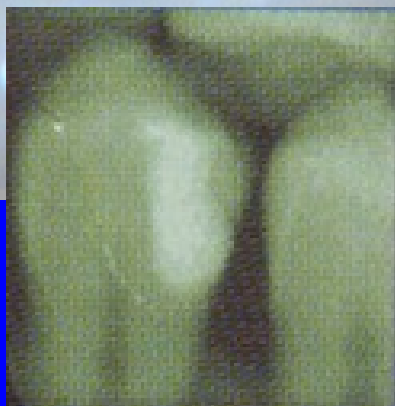
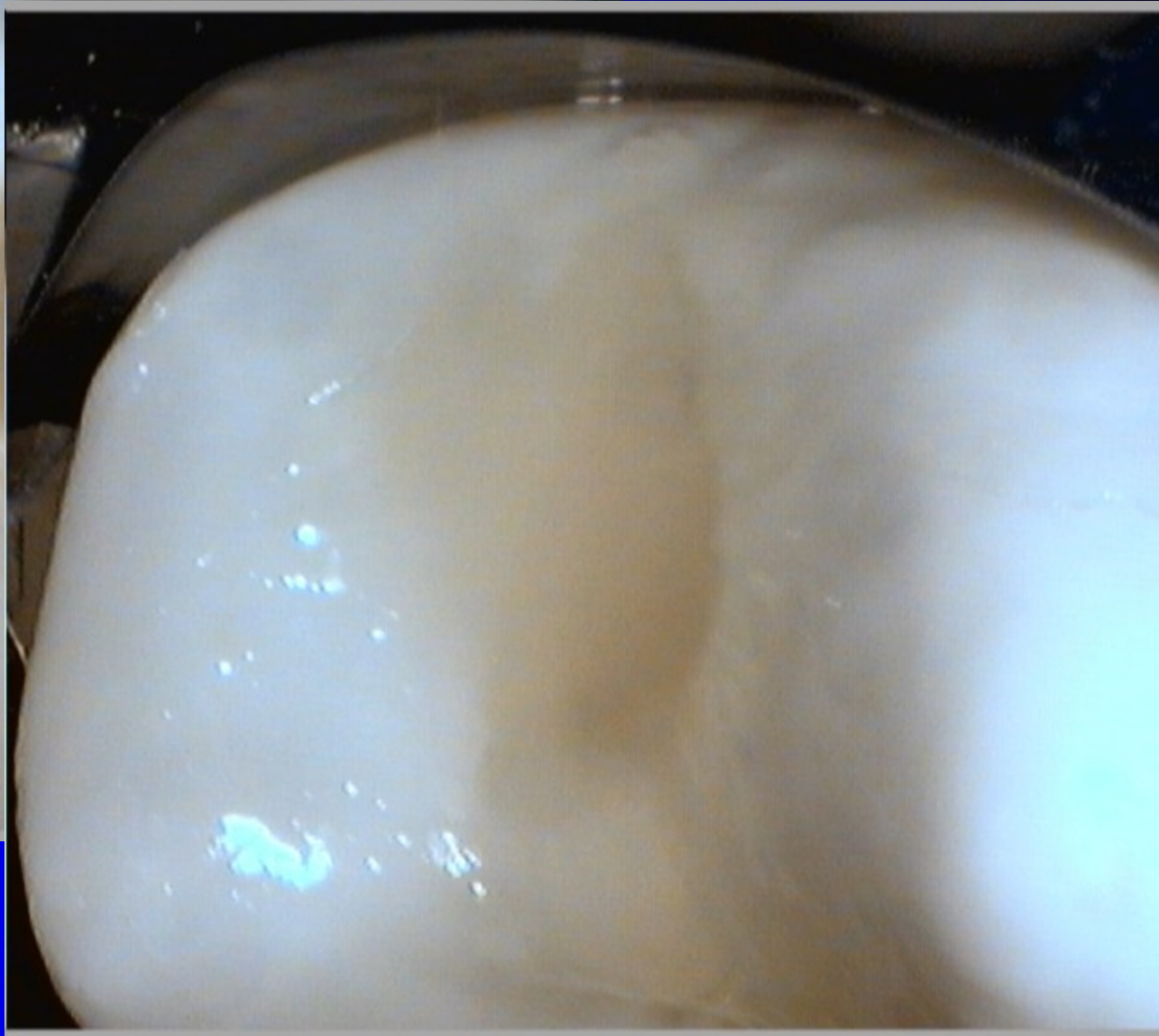
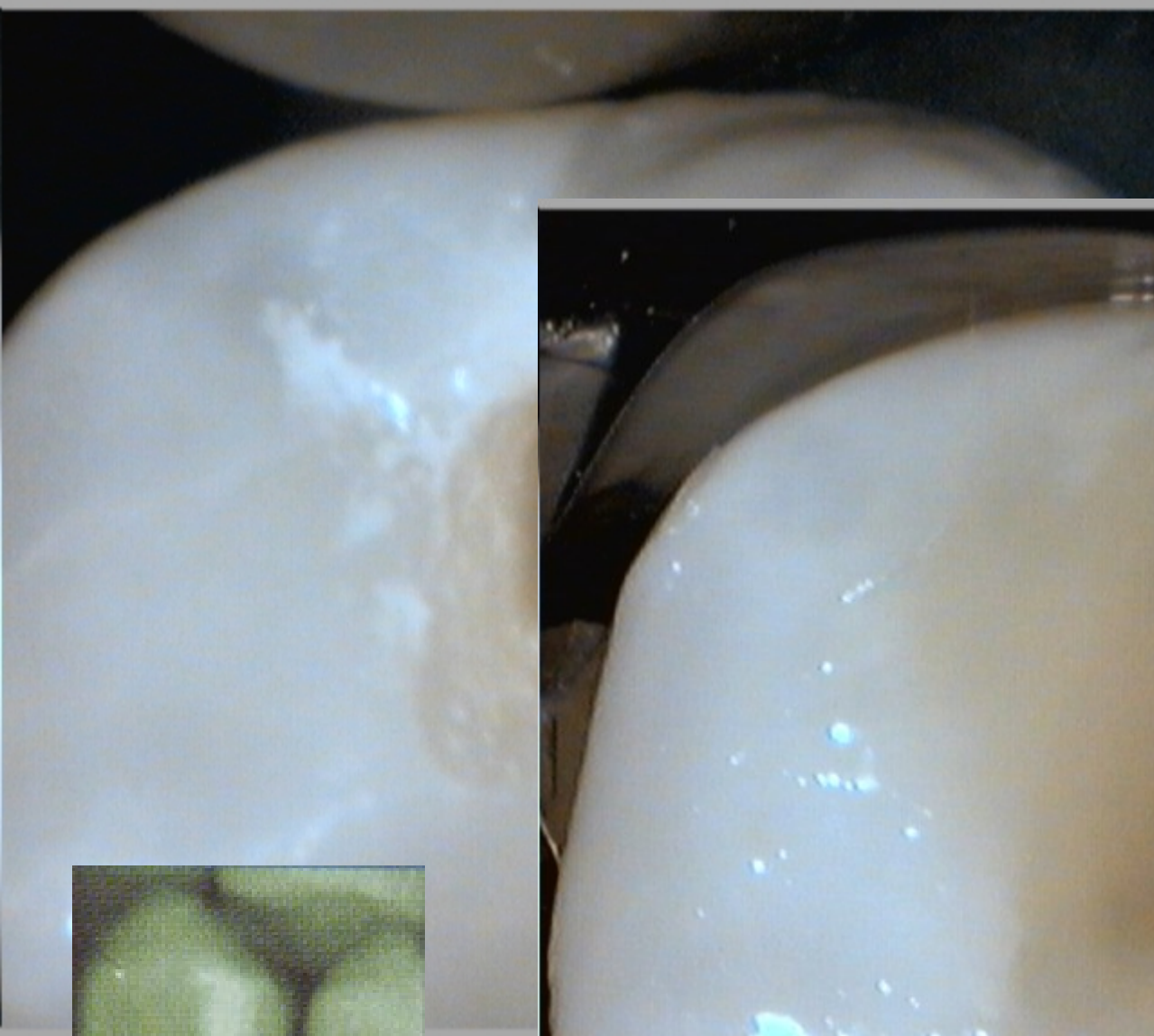




Tunelová preparace













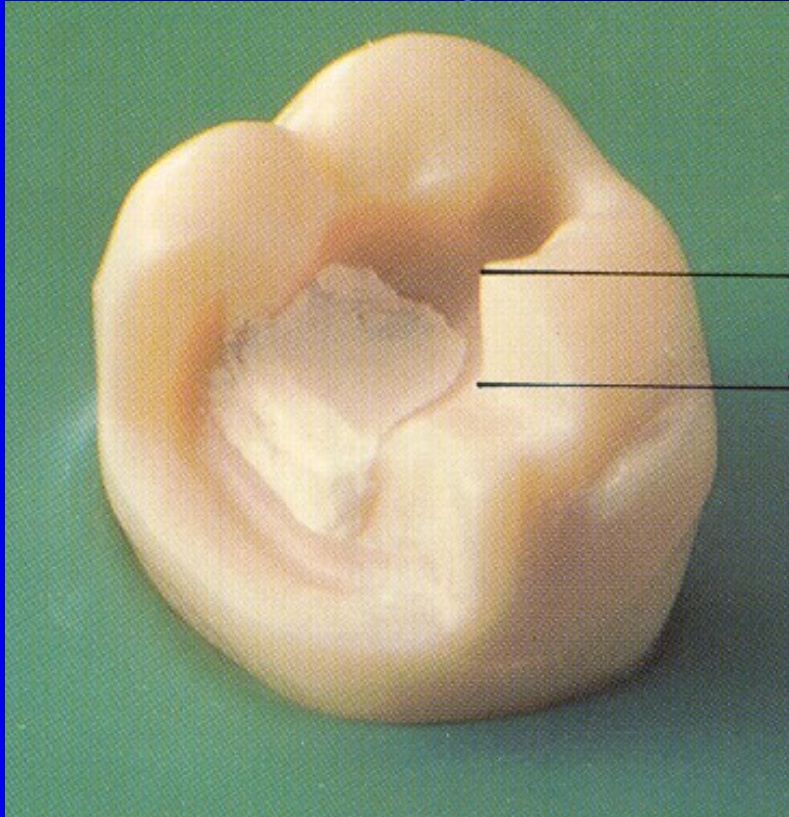
Úspěch tunelu????

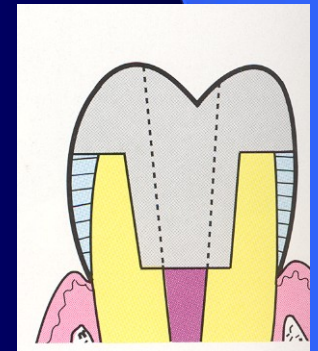
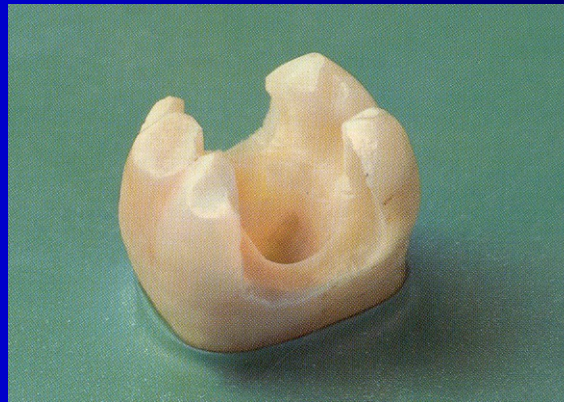
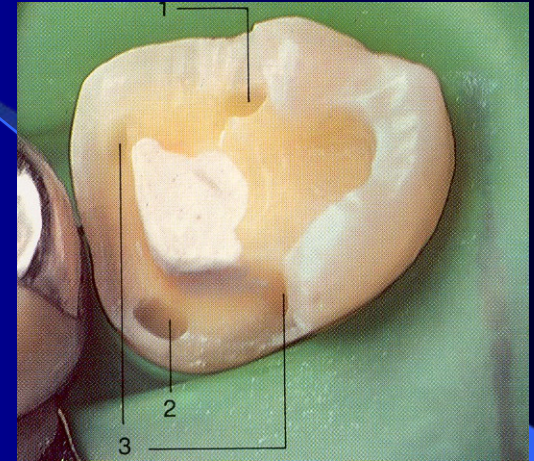
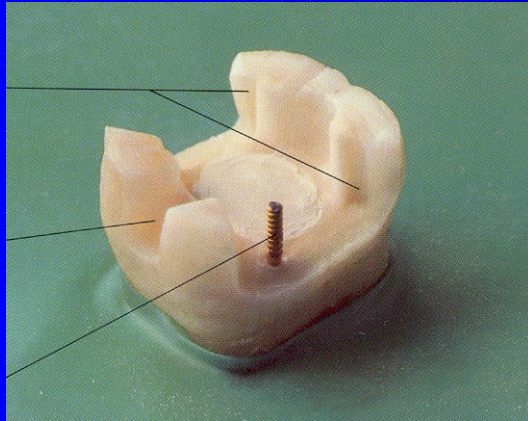
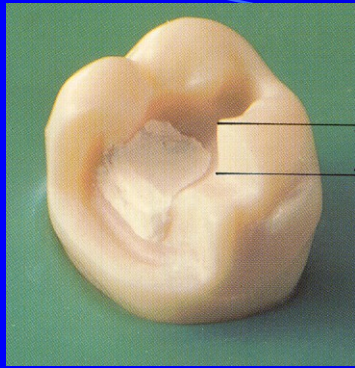
1. Nízké riziko sklonu k novým kazům
2. Spolupracující pacient
3. Okrajová lišta bez infrakcí
4. D2 – D3



Úspěch tunelu????

1. Lupové brýle nebo mikroskop
2. Miniaturní instrumenty
3. Dezinfekce kavity
4. Jedině GIC v kapslích
5. BW post op





Large amalgam restoration - overlays



Rules

- Clear and sharp outlines
- Autoretention
 - Cavities - pins
 - Grooves