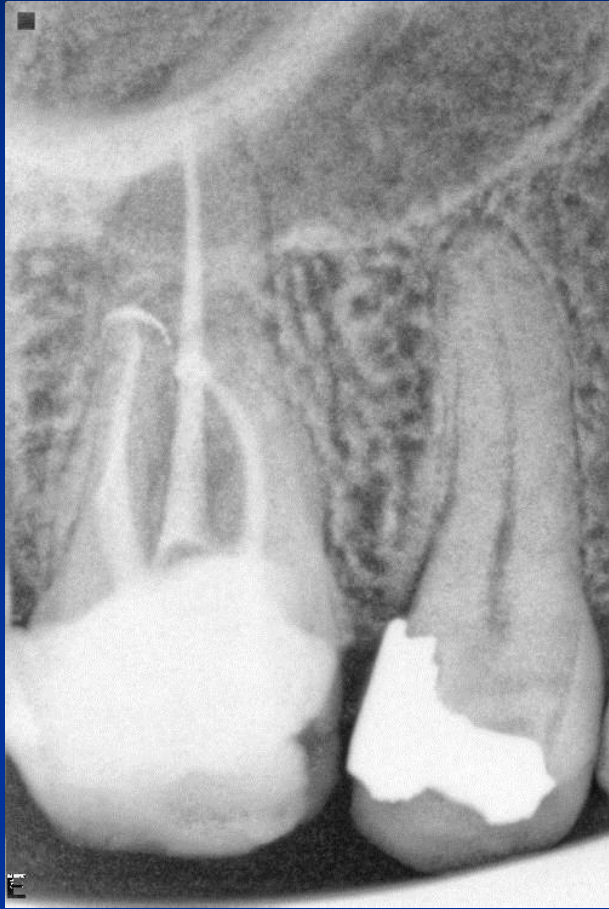
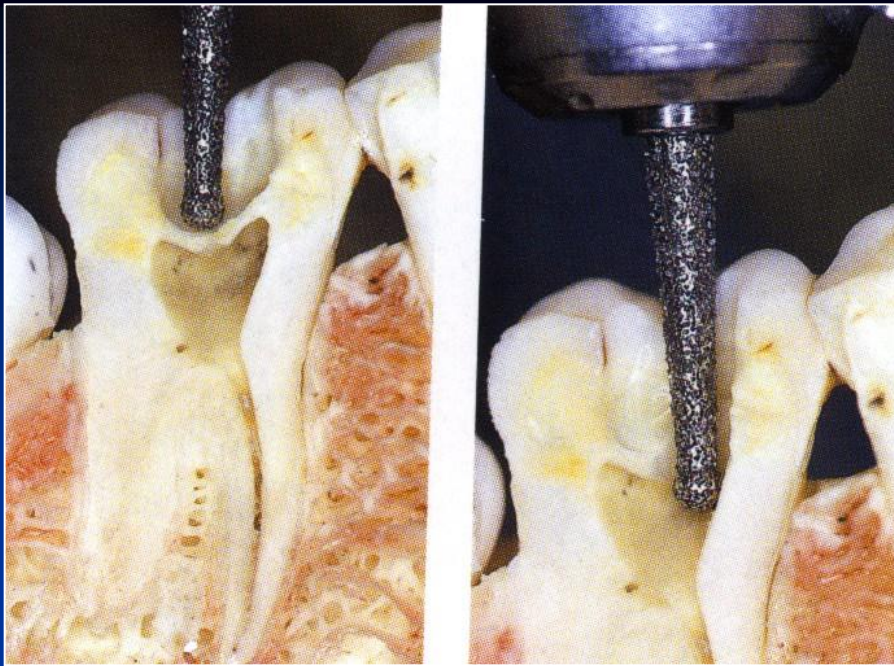


Phases of the endodontic treatment

- Diagnosis
- Consideration
- Removal of carious dentin, old fillings, built up the clinical crown or reduction of cusps
- Local anaesthesia
- Dry operating field
- Access to the pulp chamber
- Root canal shaping
- Root canal cleaning
- Root canal filling
- X ray
- Postendodontic treatment

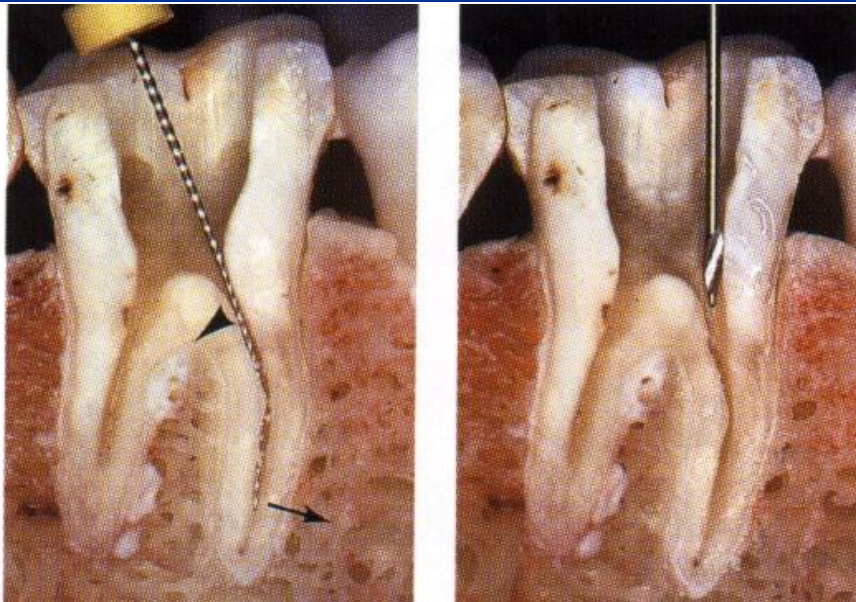
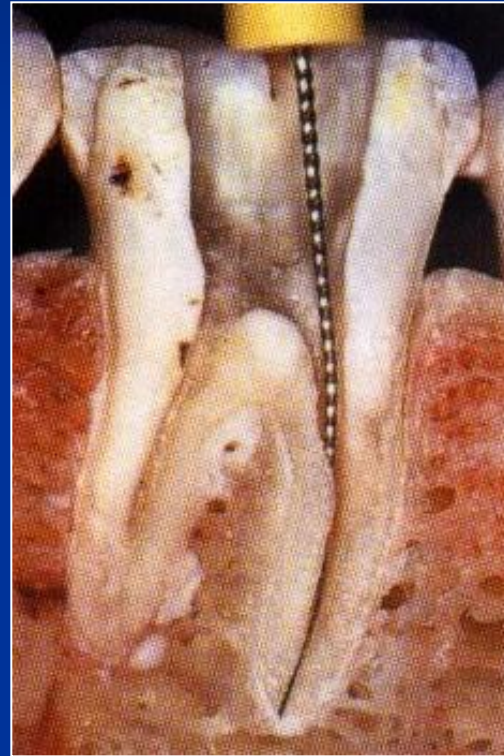
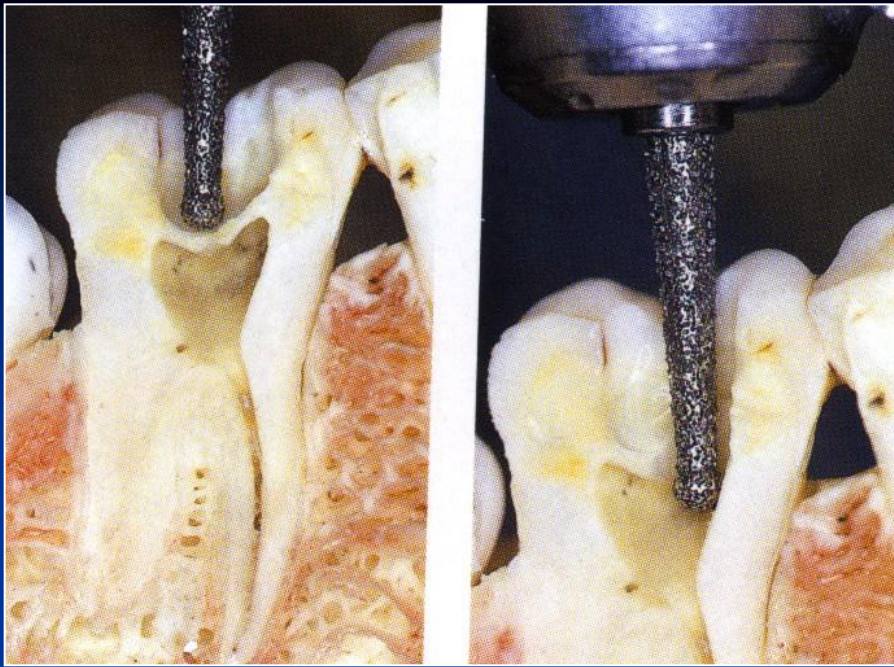


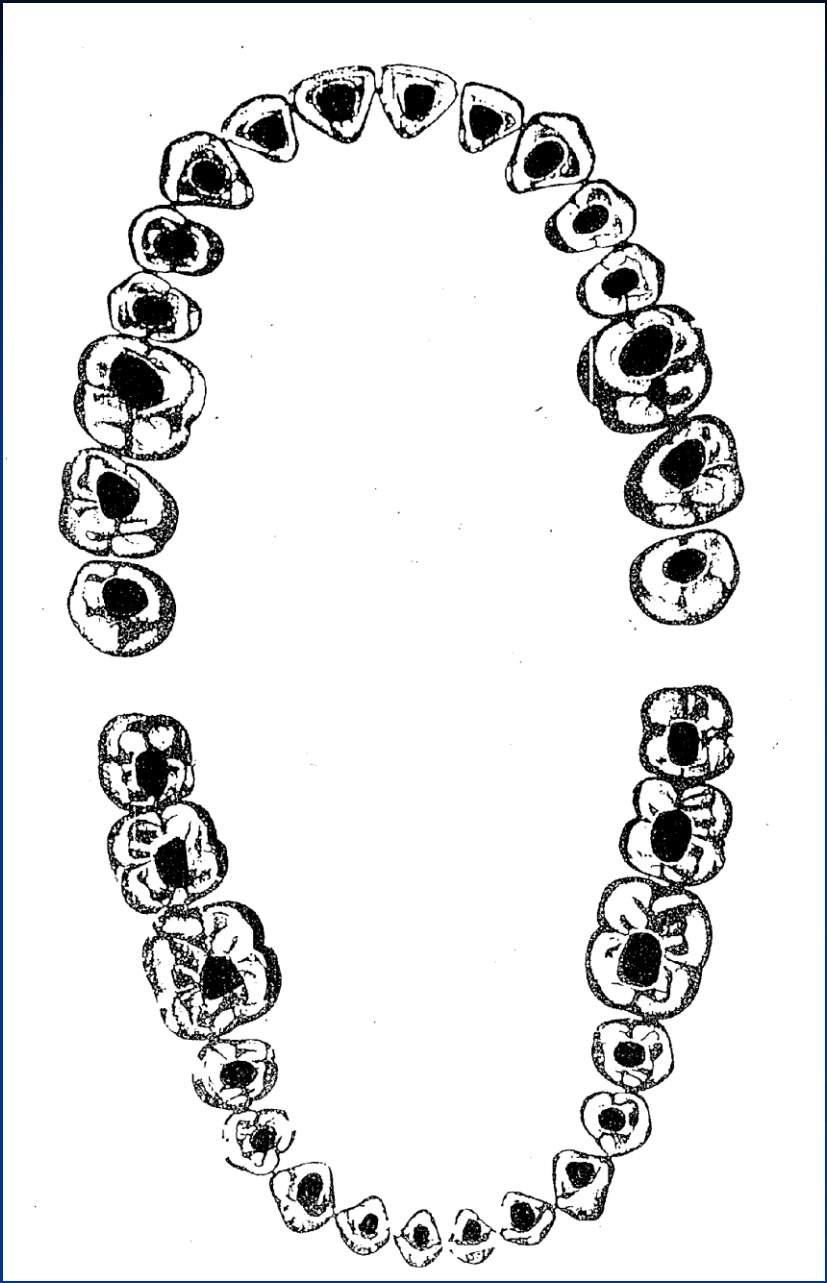


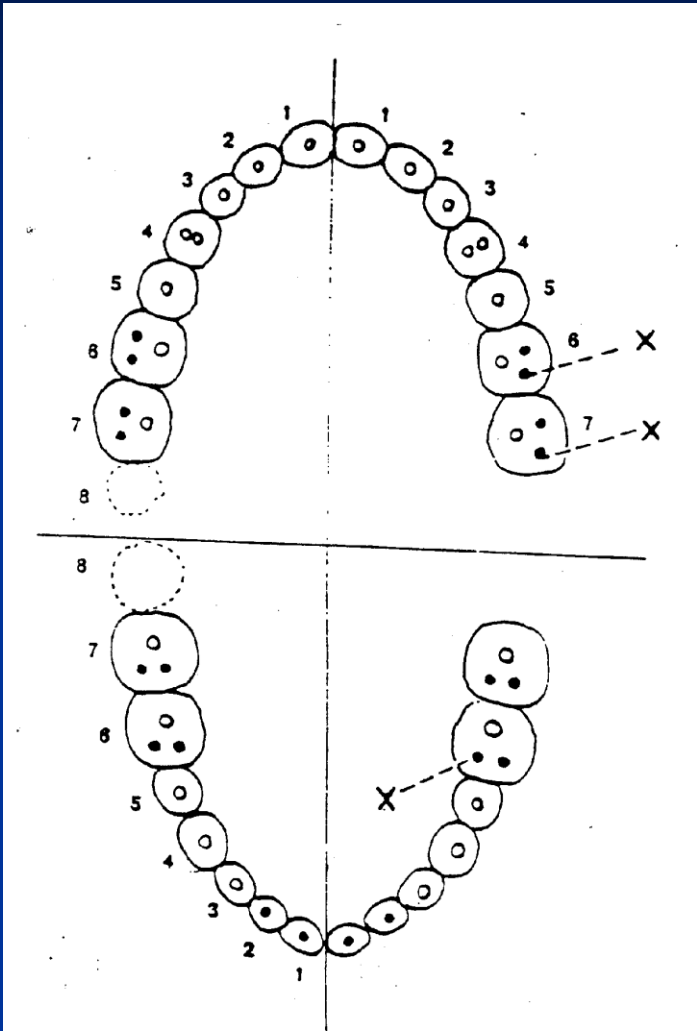
Access

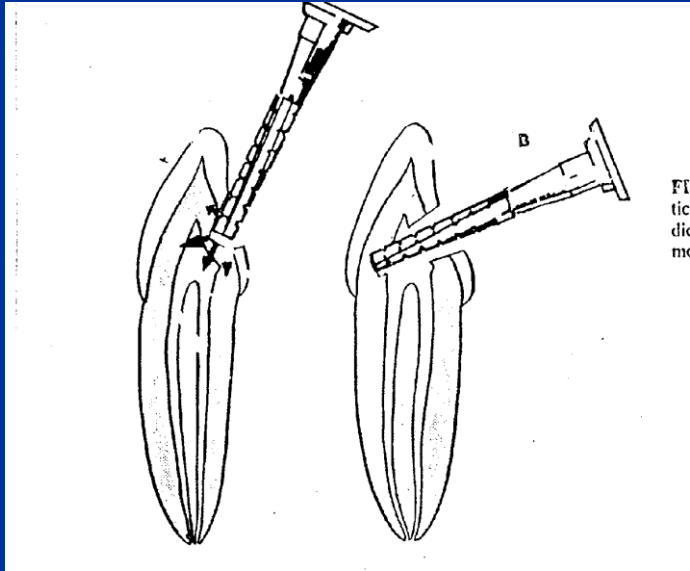
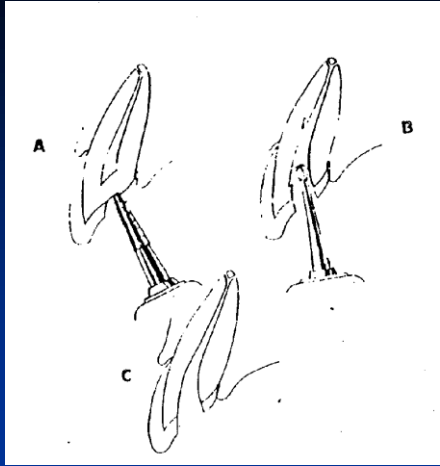


Access

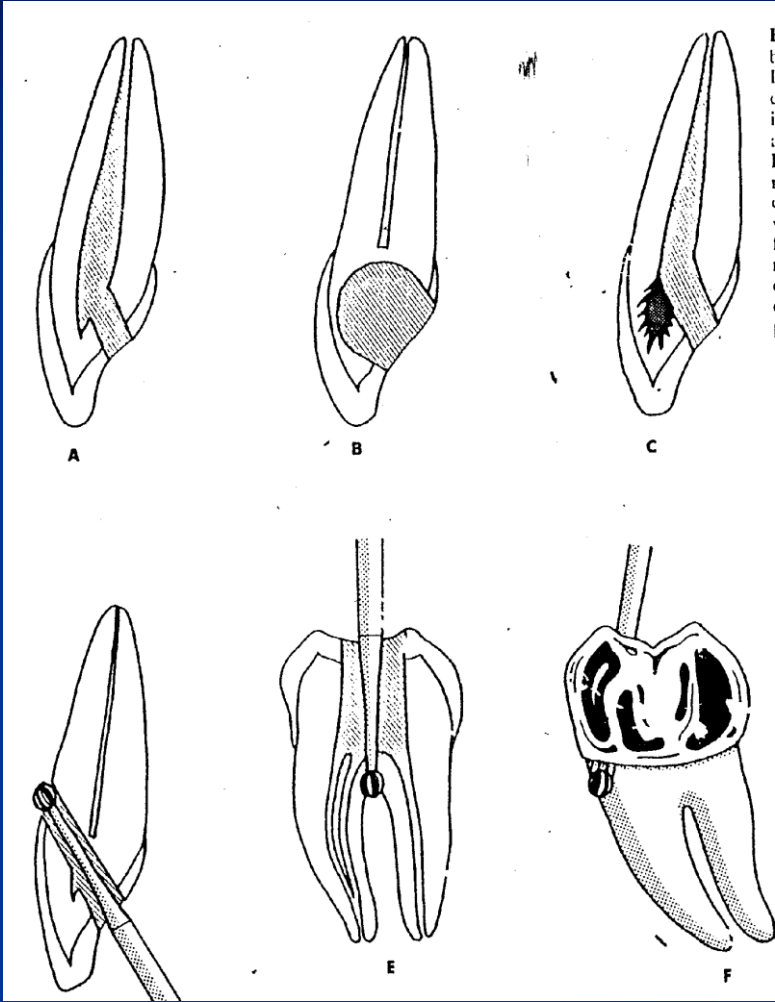








Fi
tic
dic
me



Access – opening of the pulp chamber



Dia trepan



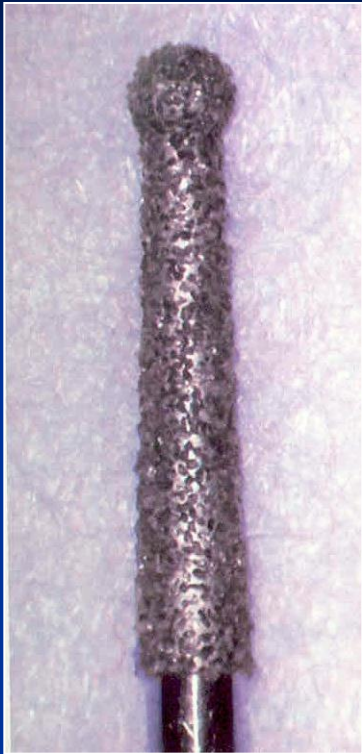
Dia balls



Round Burs



Preparation of the endodontic cavity –facilitating form

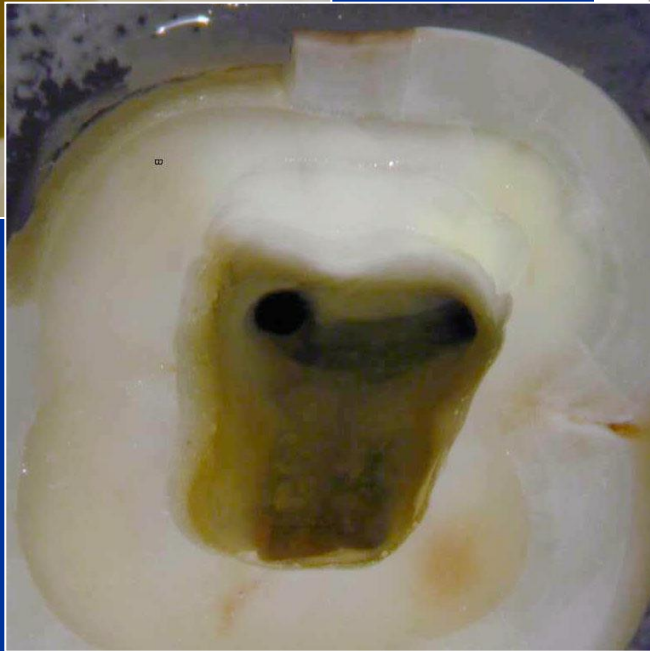
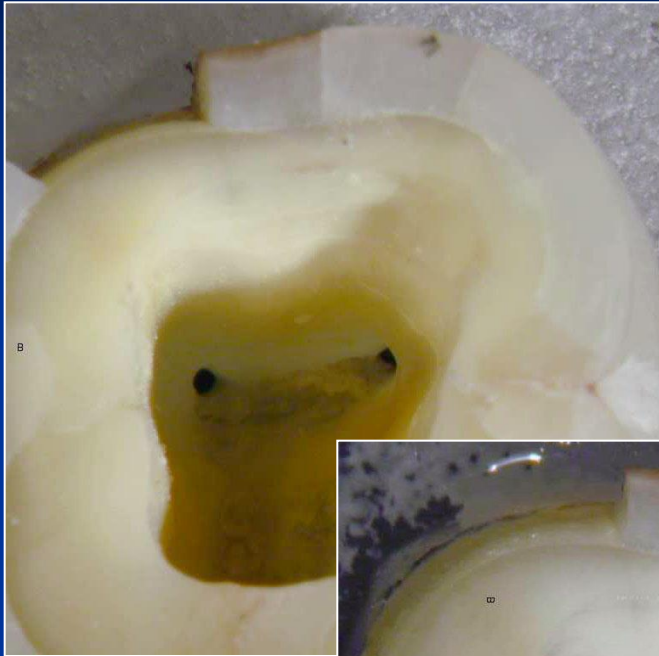


Dia trepan

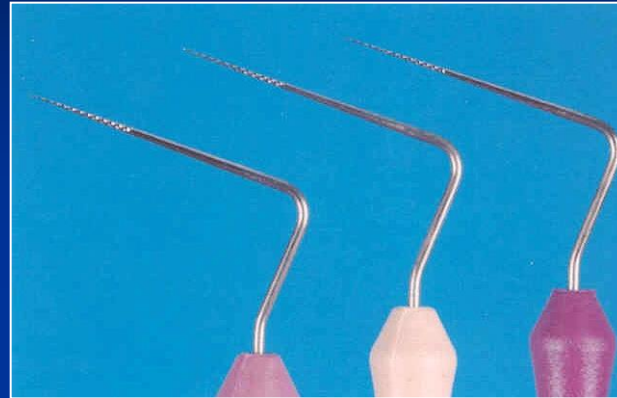
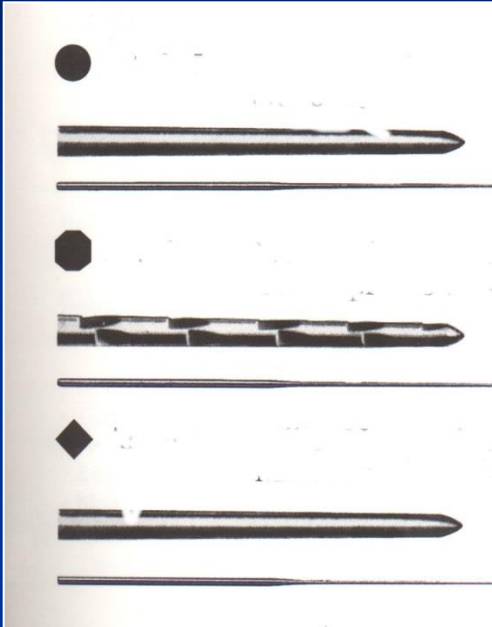


Fissure burs

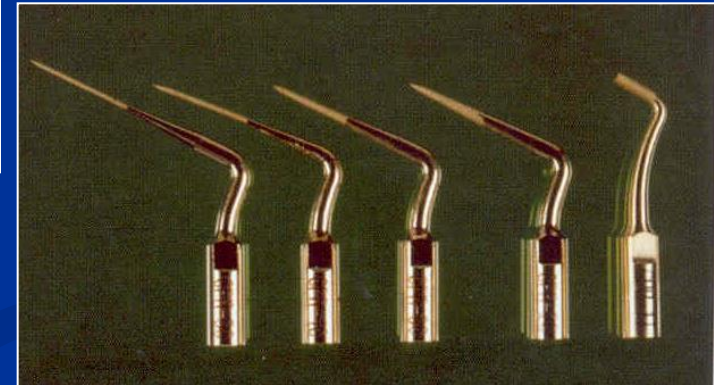
Instruments with safe
ended tips),
Acc. to Batt



Root canal access



↑
Endodontic probes
Microopeners



Ultrasound

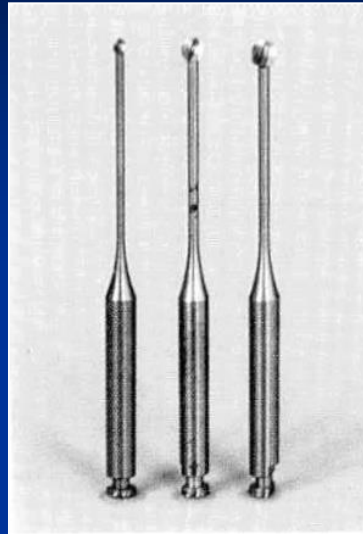


Dye

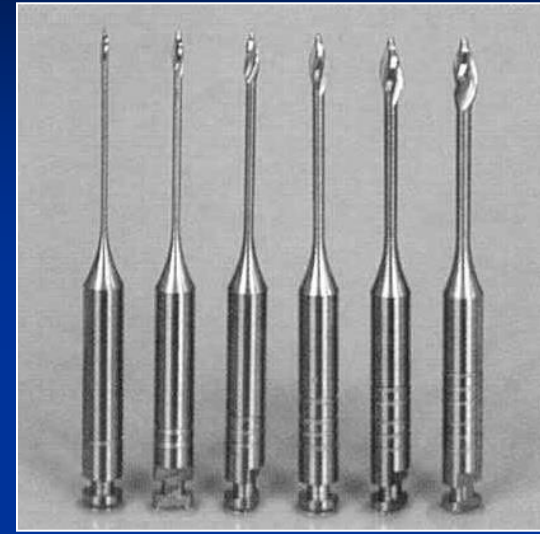
Opening of the root canal orifices



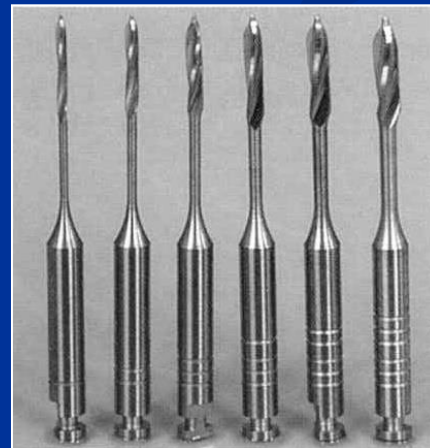
Round burs



Miller's burs



Gates Glidden's burs



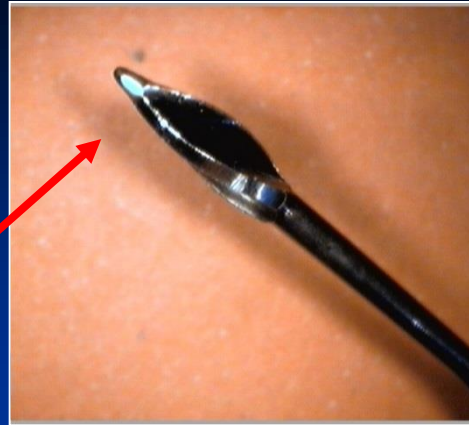
Peeso – Largo burs



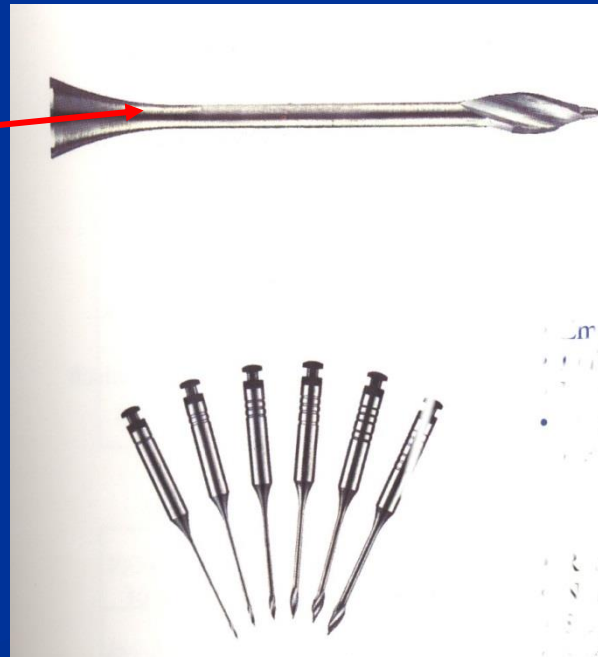
Gates - Glidden



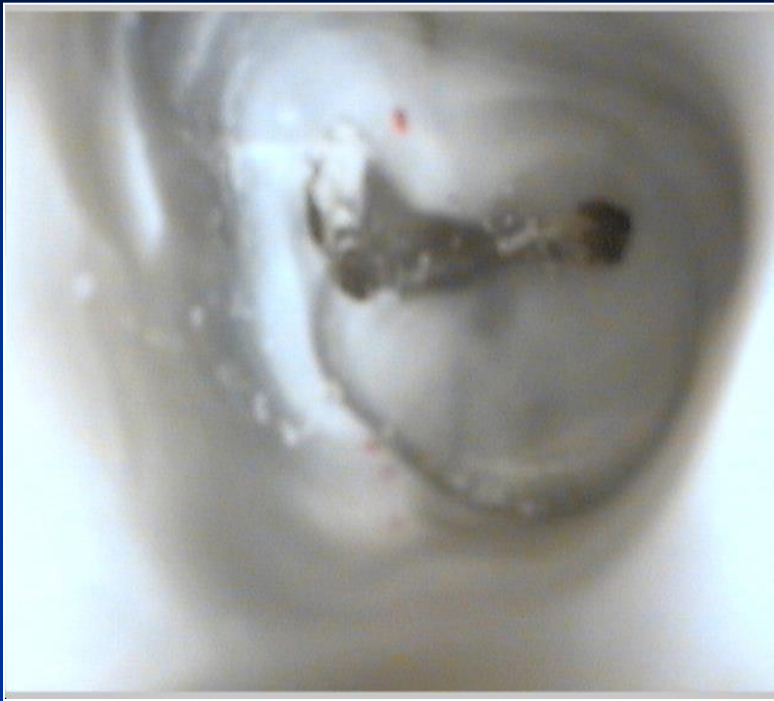
Peeso-Largo



Gates – Glidden:



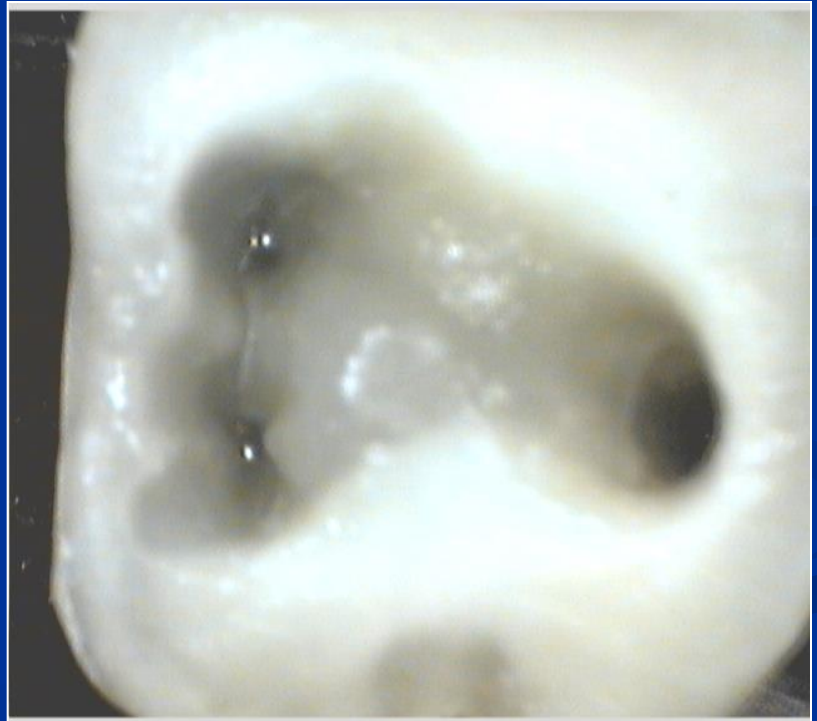
Point of breakage



Bad endodontic cavity



Good endodontic cavity





Prístupové sady
Access kits









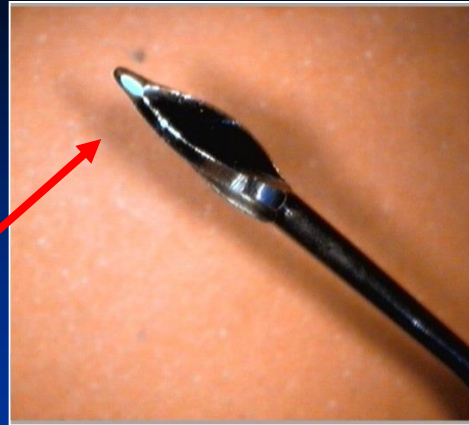




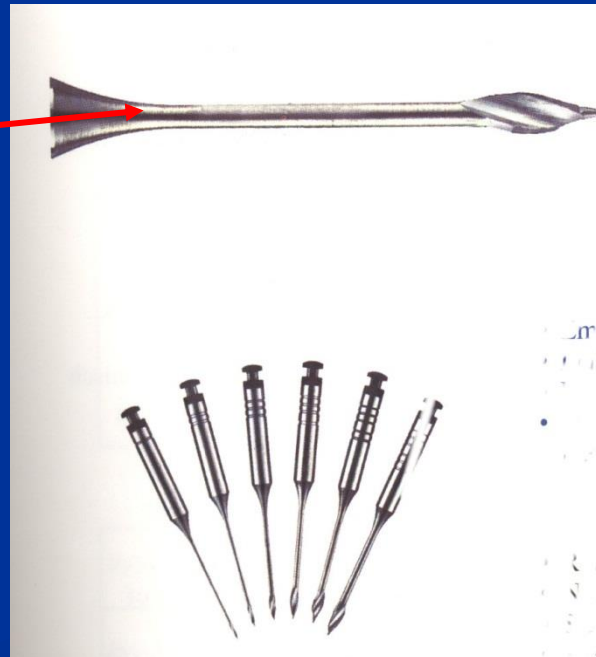
Gates - Glidden



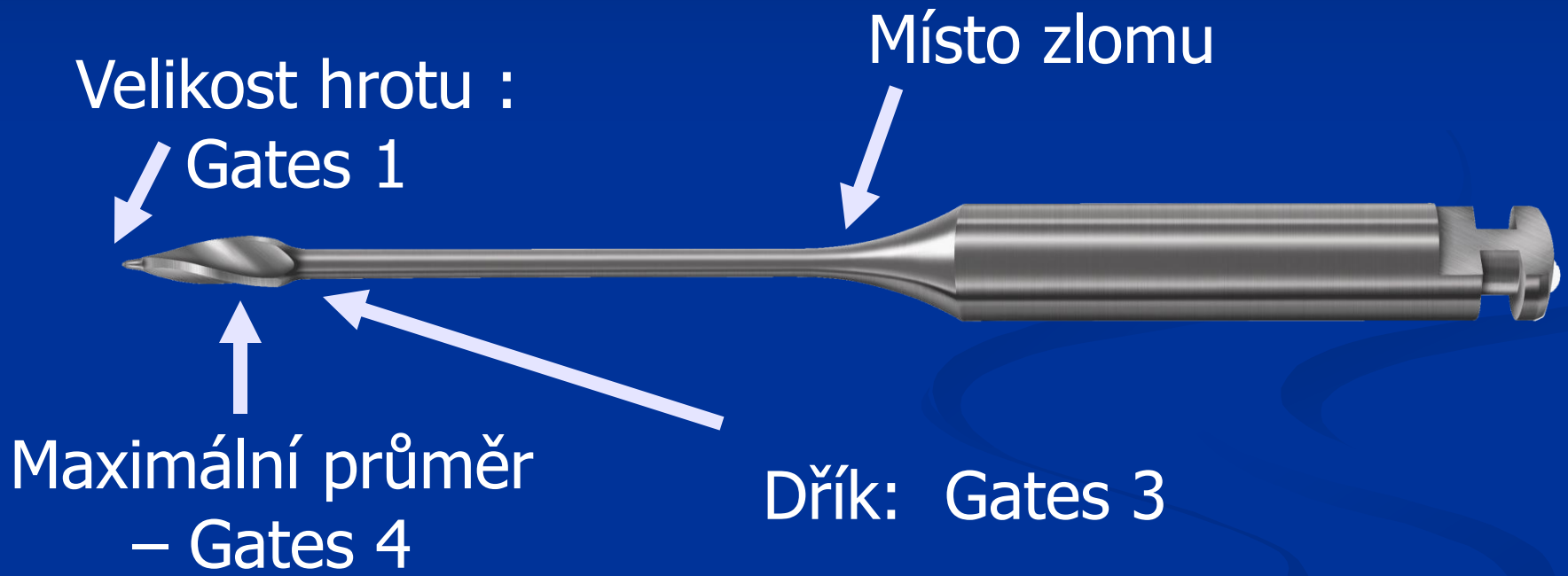
Peeso-Largo

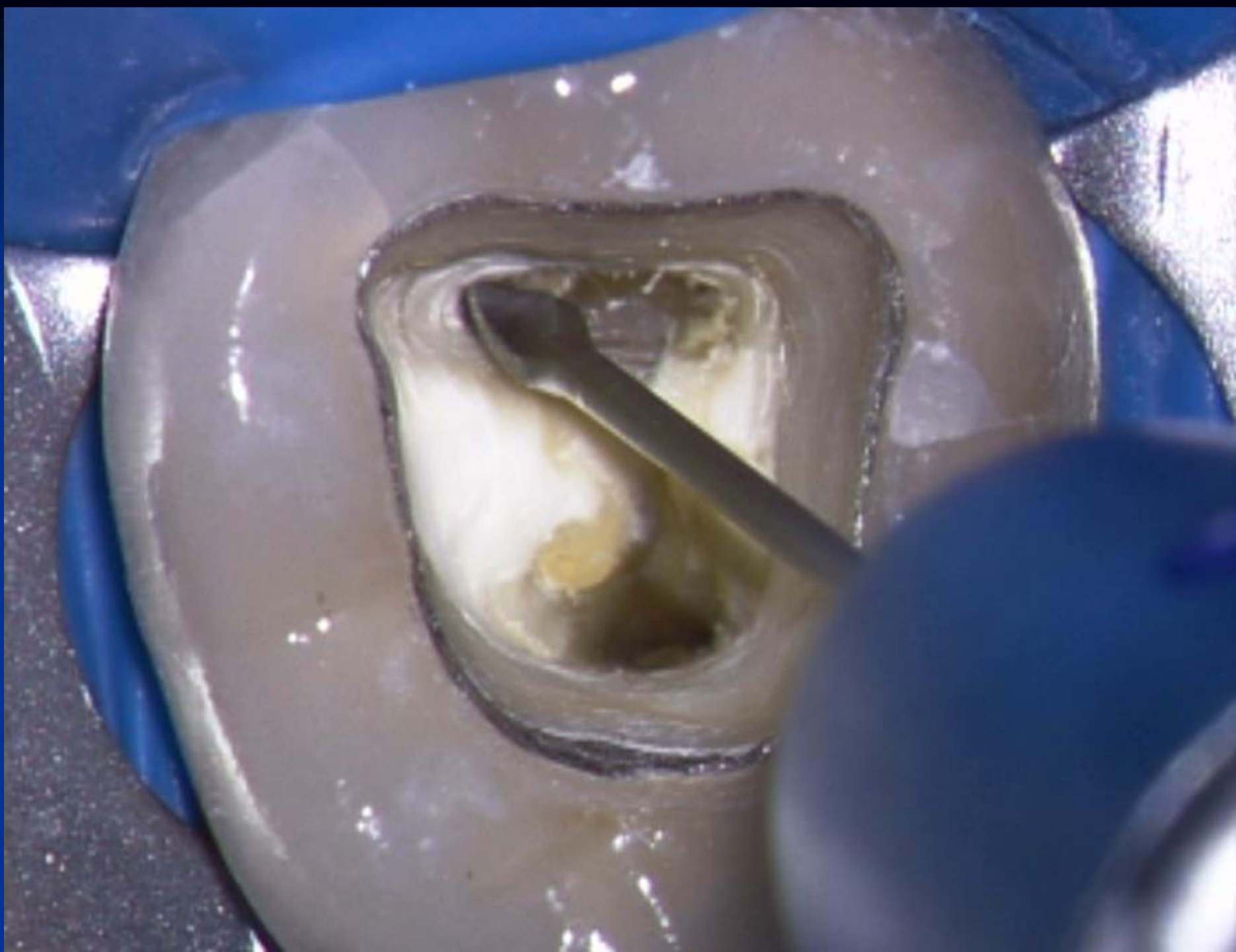


Gates – Glidden:
Tupá, neaktivní vodící špička
Naprogramované místo
zlomu



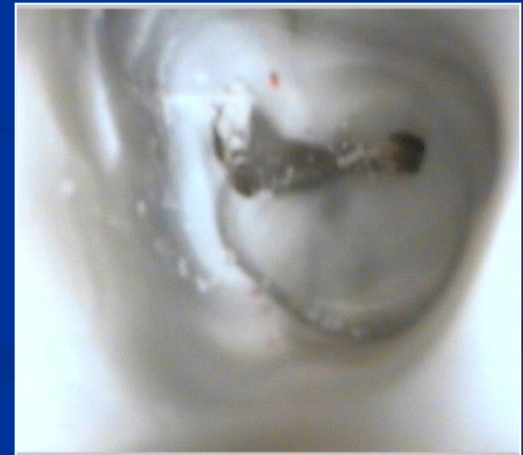
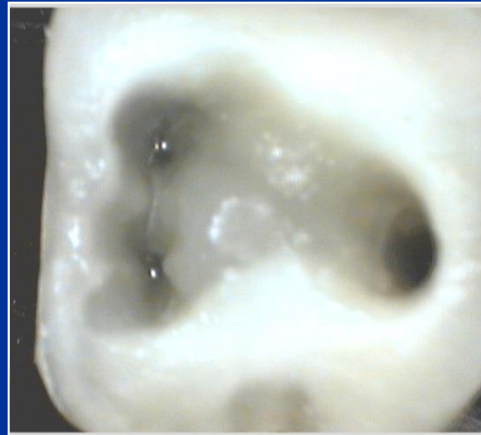
X-GATES

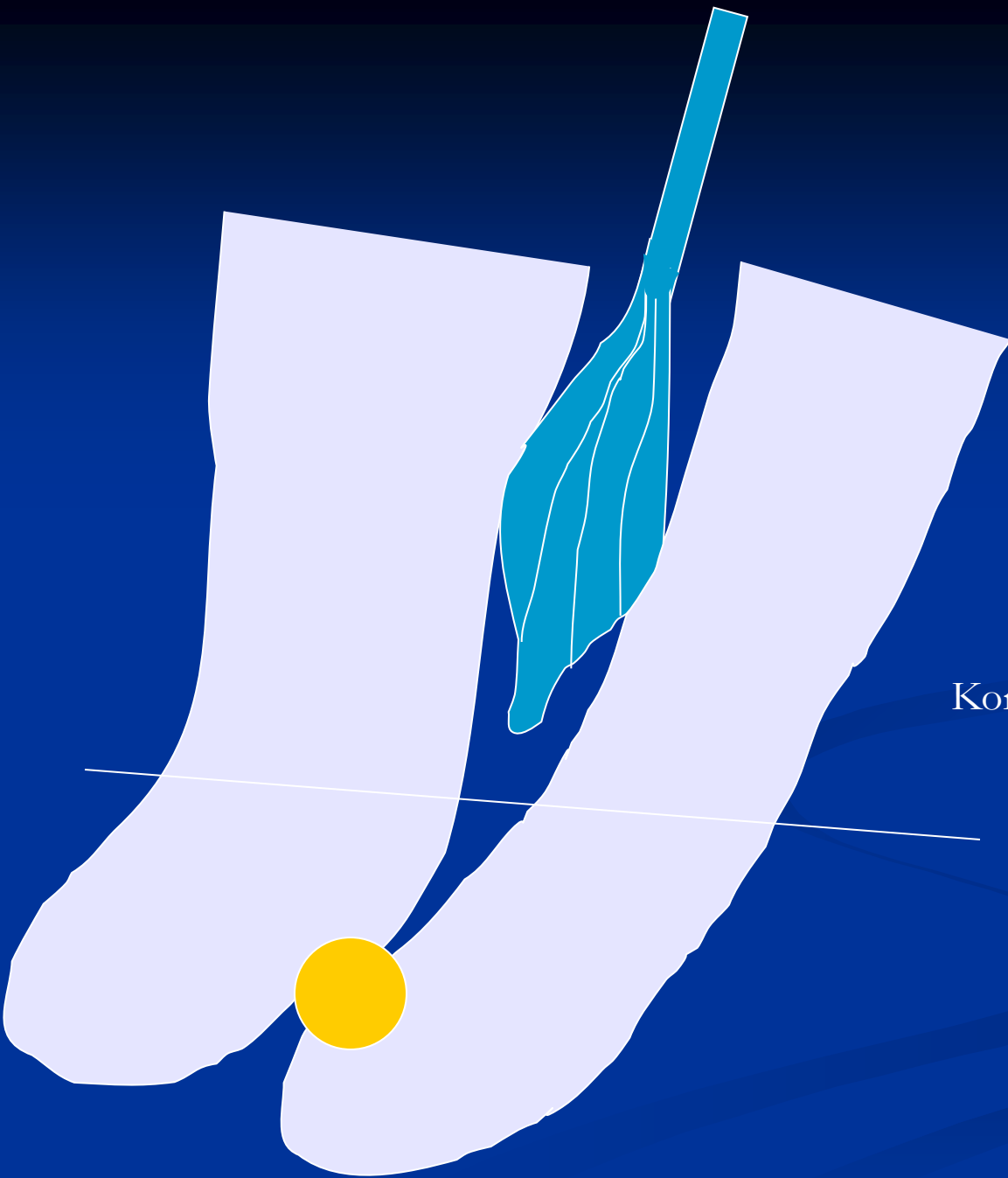






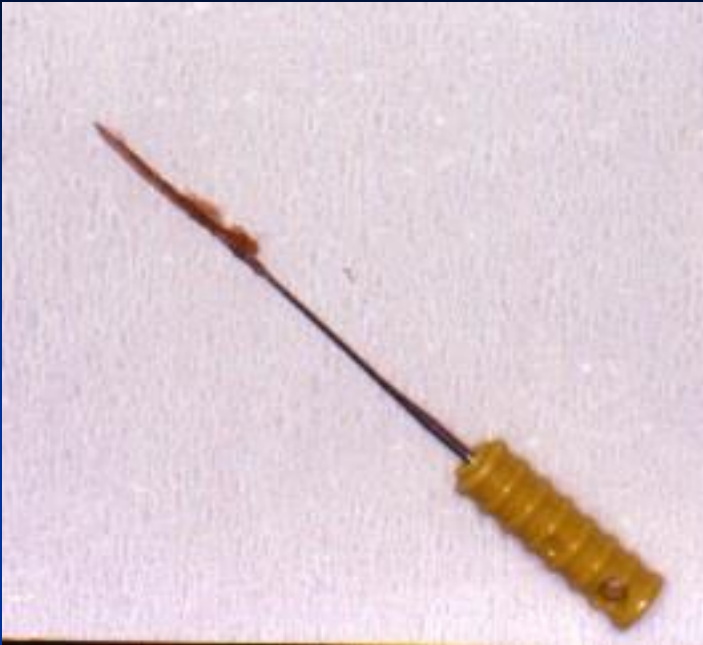
Nalezení a rozšíření vstupu do kořenových kanálků





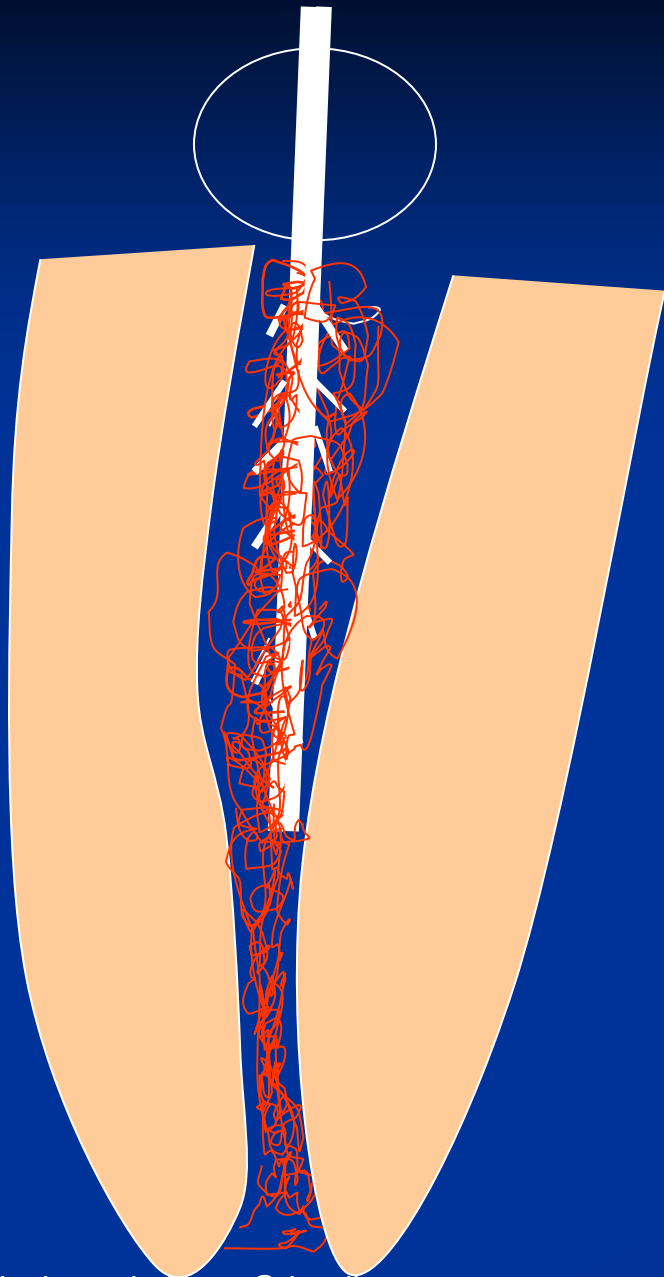
Koronální flaring

Extraction of the content of the root canal - exstirpation



Pulpextraktor – made of soft wire





➤ Rotation and exstirpation!

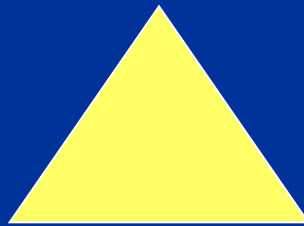
Canal shaping

➤ Reamers

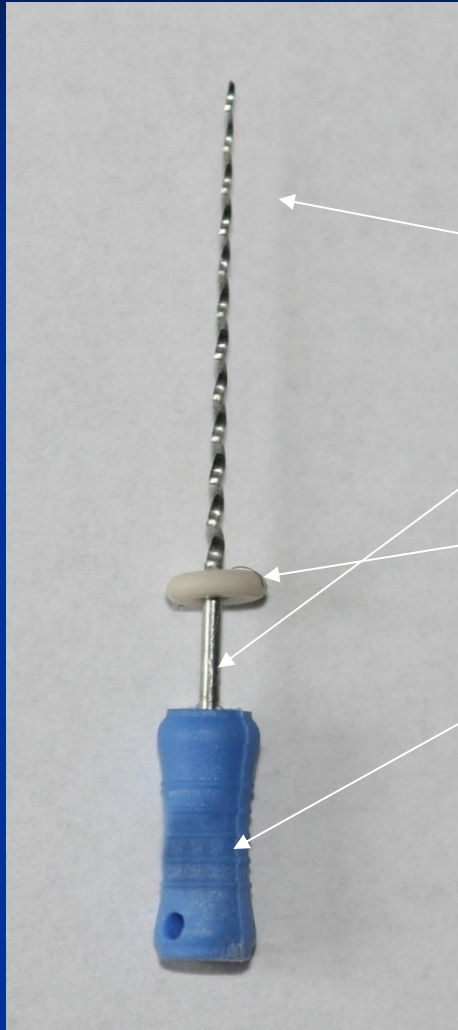
➤ Files

Reamer

- **K -reamer**



Reamer



Working –cutting part

Shank

Stopper

Grip

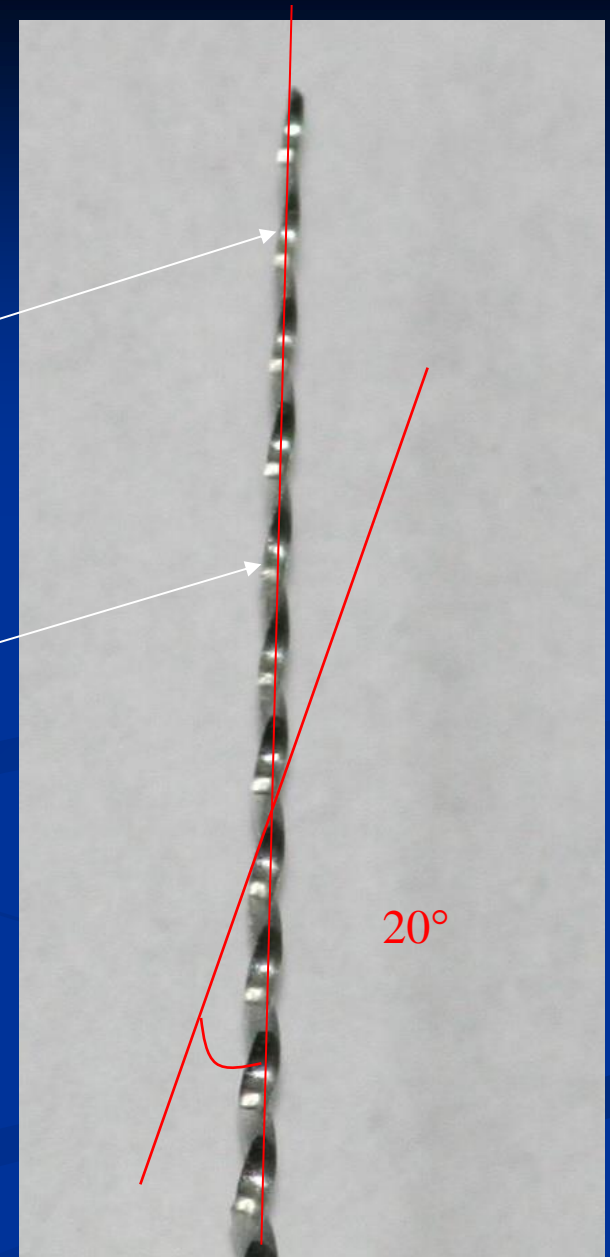


Reamer

Cutting edges

Space for chips

Clockwise rotation



Files

1. K-file
2. K-flexofile, flexicut, flex-R - file
3. K-flex
4. H-file, S-file

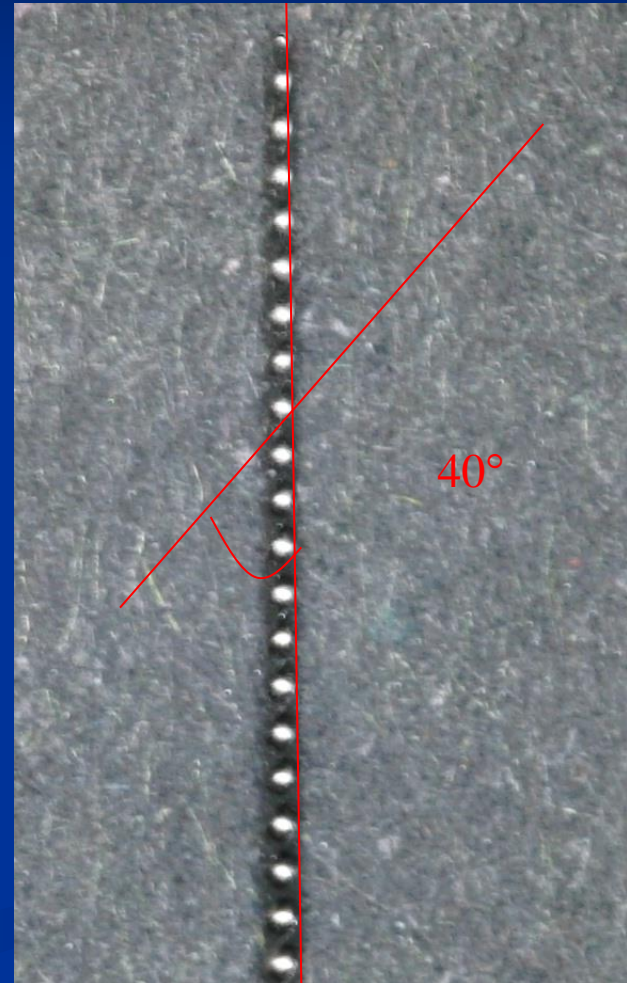
K file



K-file

Filing and (or) rotation

Straight canals 45° - 90°

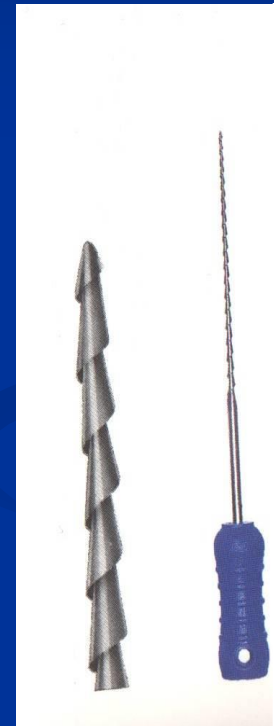
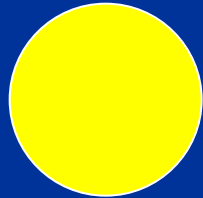


K-file x reamer



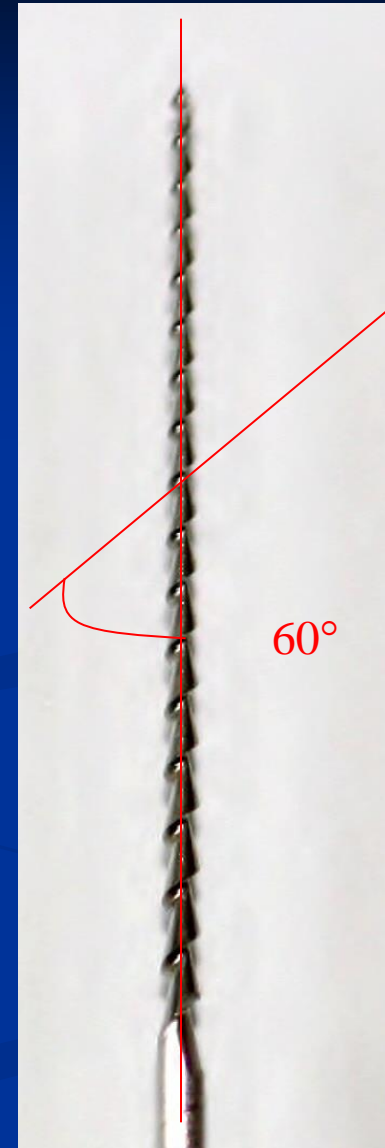
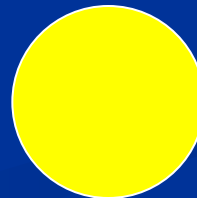
H-file

= Hedström file



H- file

Filing only!!!!



ISO norma

- Diameter
- Length of the cutting part
- Taper



06 pink

08 gray

10 purple

15 white

20 yellow

25 red

30 blue

35 green

40 black

45 white

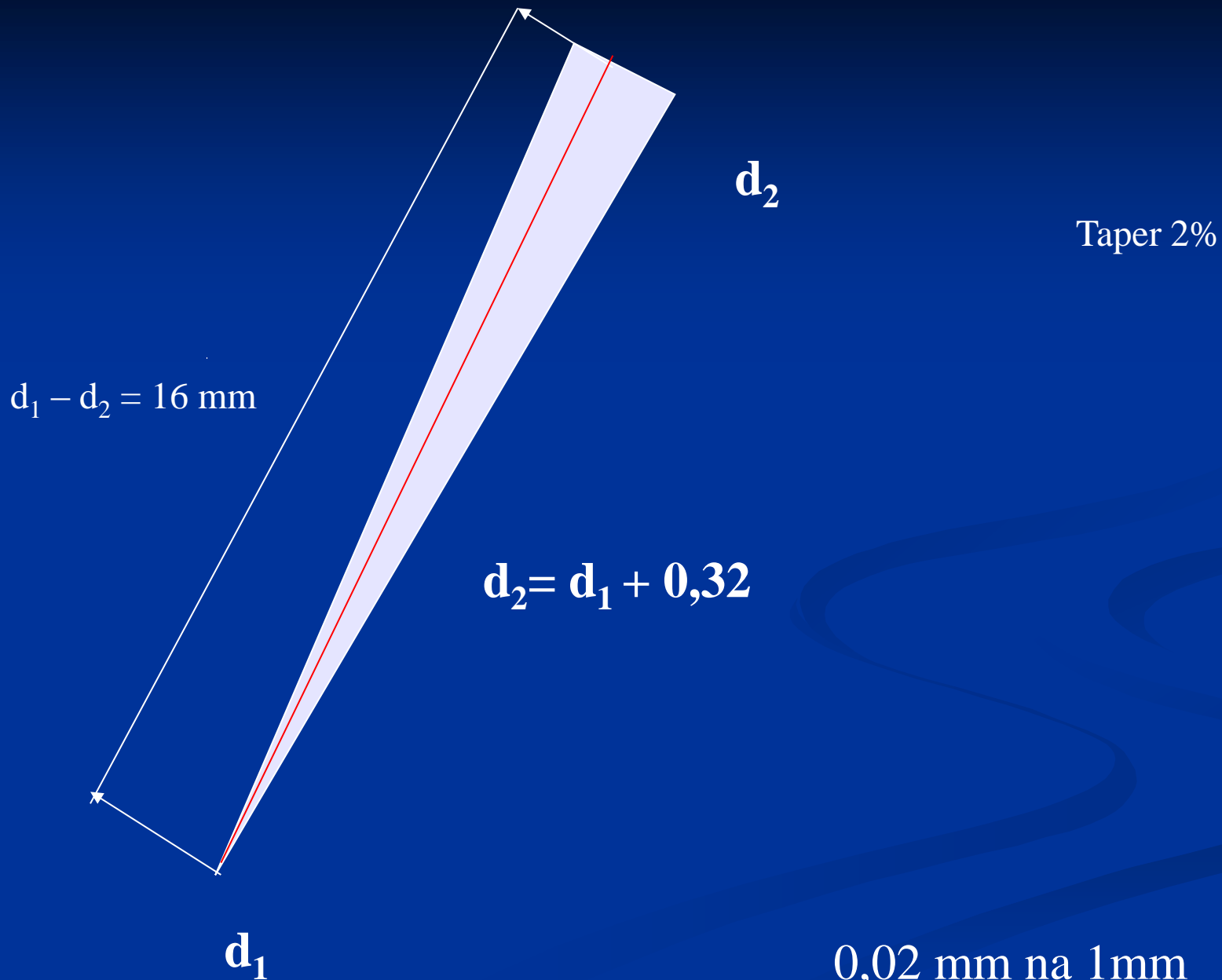
50 yellow

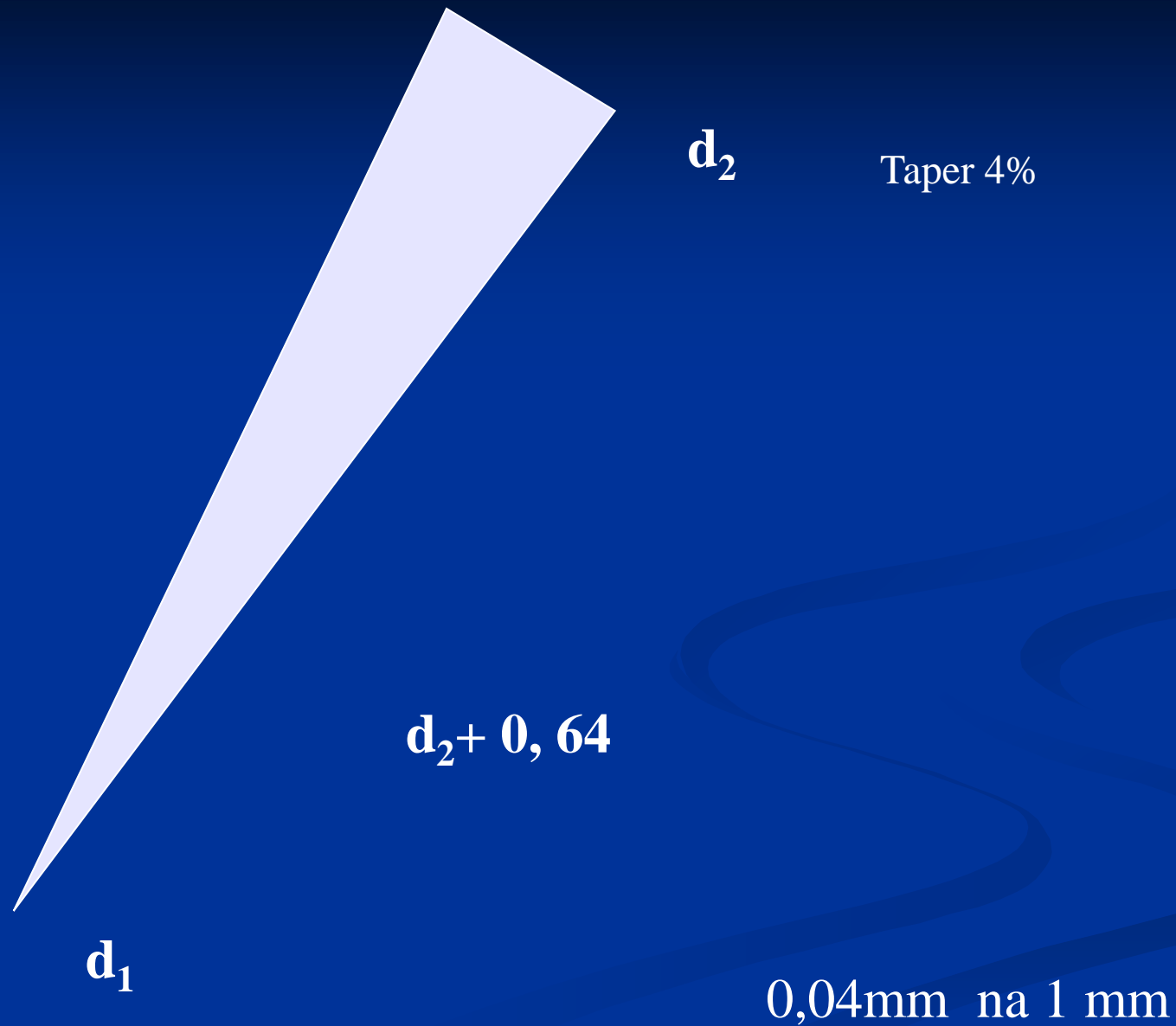
55 red

60 blue

70 green

80 black





Taper 4%

d_2

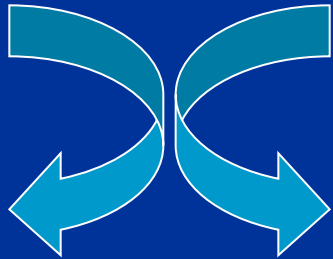
$$d_2 = d_1 + 0,96$$

d_1

0,06mm na 1 mm

Instrumentation

- Rotace tam a zpět – 45°

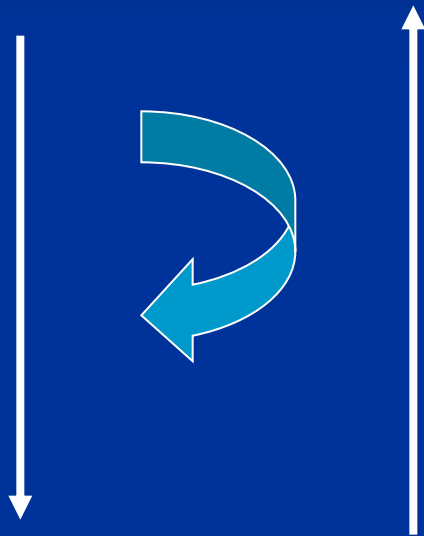


K – reamer

K- file

Instrumentation

Rotation

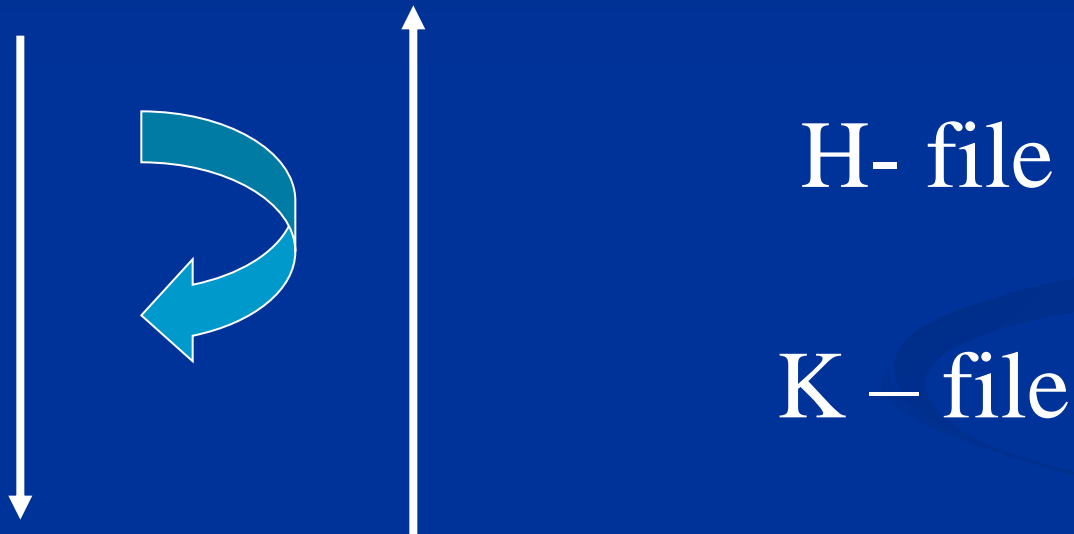


K – reamer

K- file

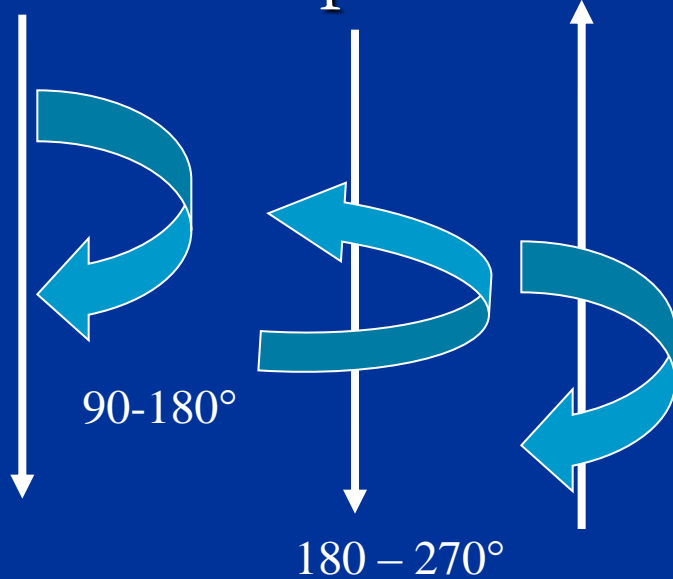
Instrumentation

- Filing



Instrumentation

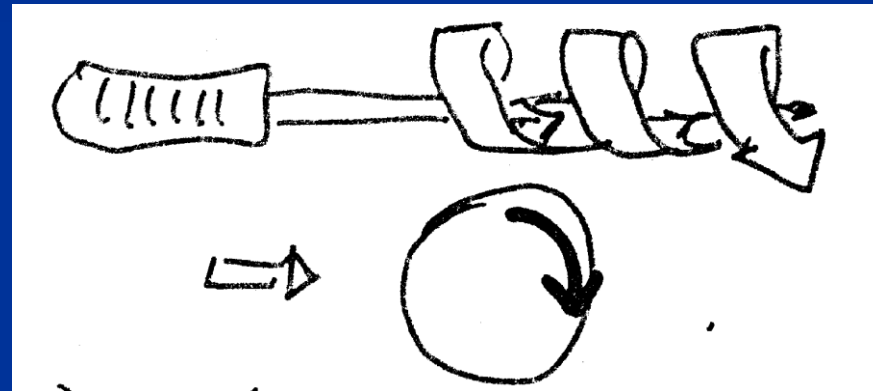
- Ttechnika balancované síly – nástroj o 1 číslo větší než apikální velikost



K- flexofile

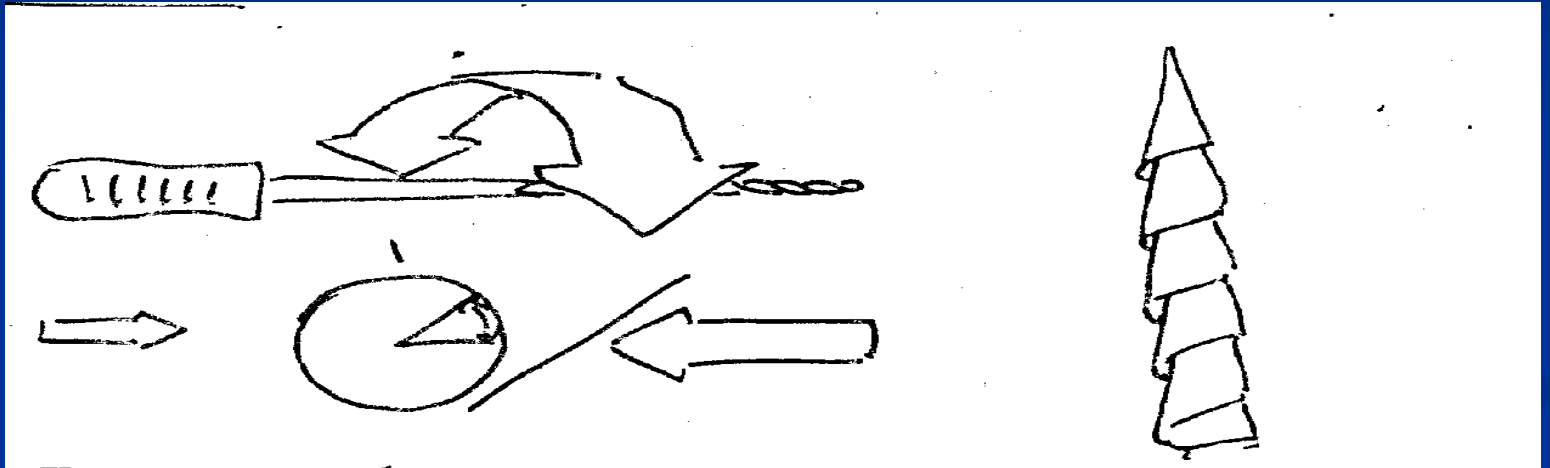
K – file (?)

Reaming

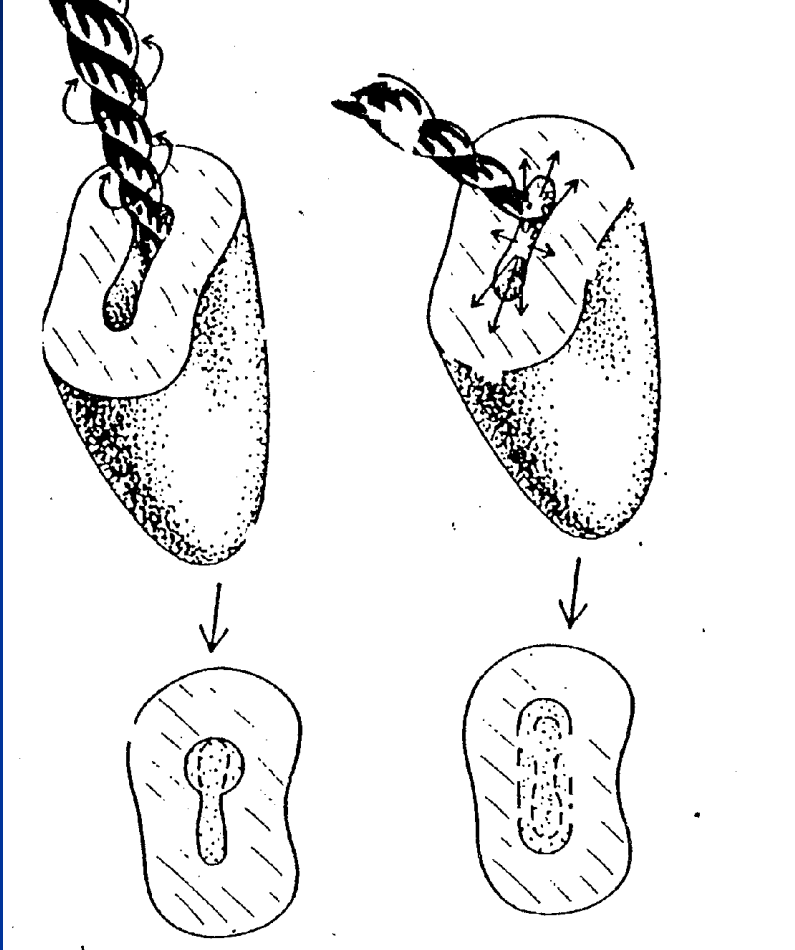


Simple clockwise rotation

Filing



Circumferential filing



H -file

Introduction of the root canal instrument
root canal.

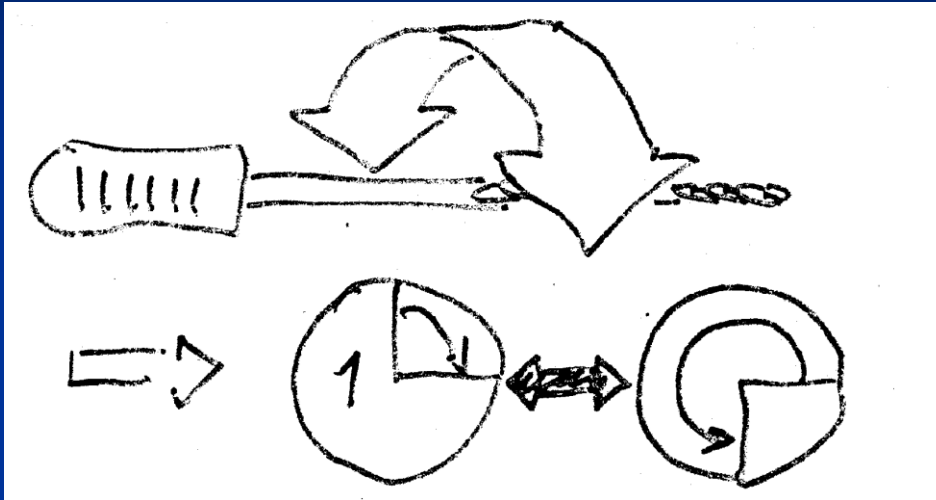
Pull motion – action.

Staying in contact with the root canal wall

Rotate without any action

Go in and pull with action.

Balance forced technique



K- file
Flex O file
Flex R file

Go into the root canal rotating clockwise
90 – 180°
Until the contact
Slight pressure and rotate
Contra-clockwise 270°
Pull out the instrument rotating clockwise again

