

Autonomic nervous system (ANS)

central compartment

peripheral compartment

sympathicus (pars sympathica)

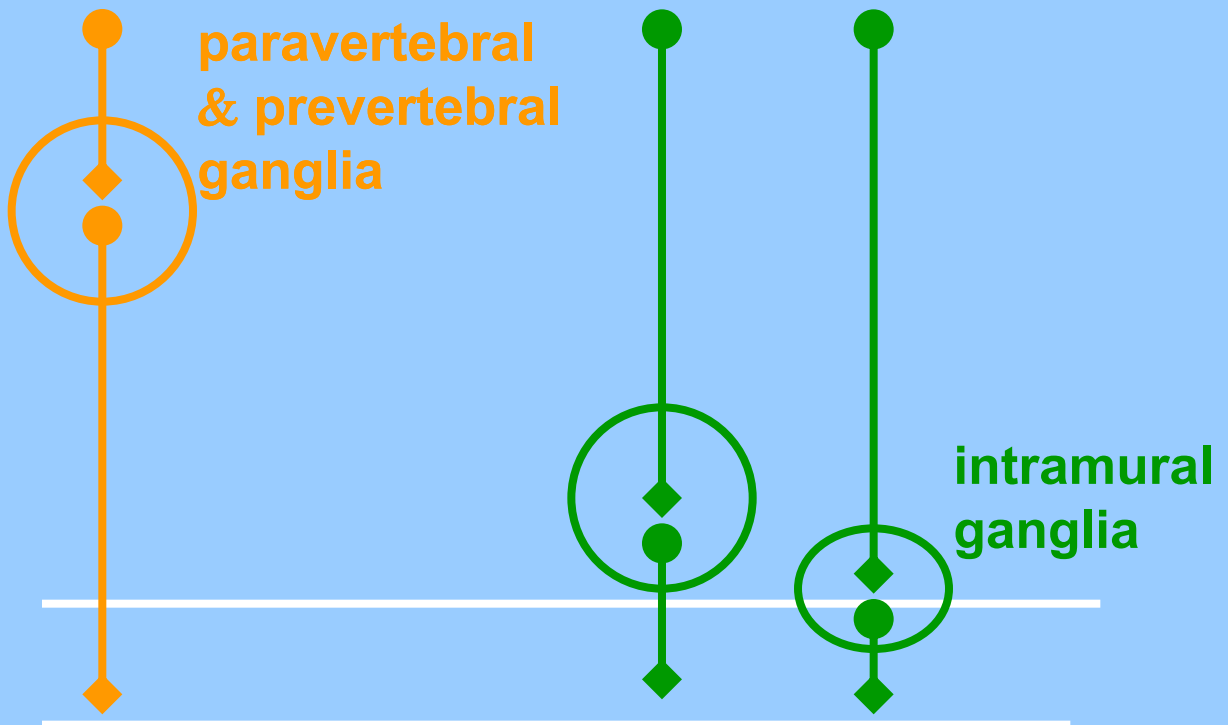
parasympathicus (pars parasympathica)

enteric system

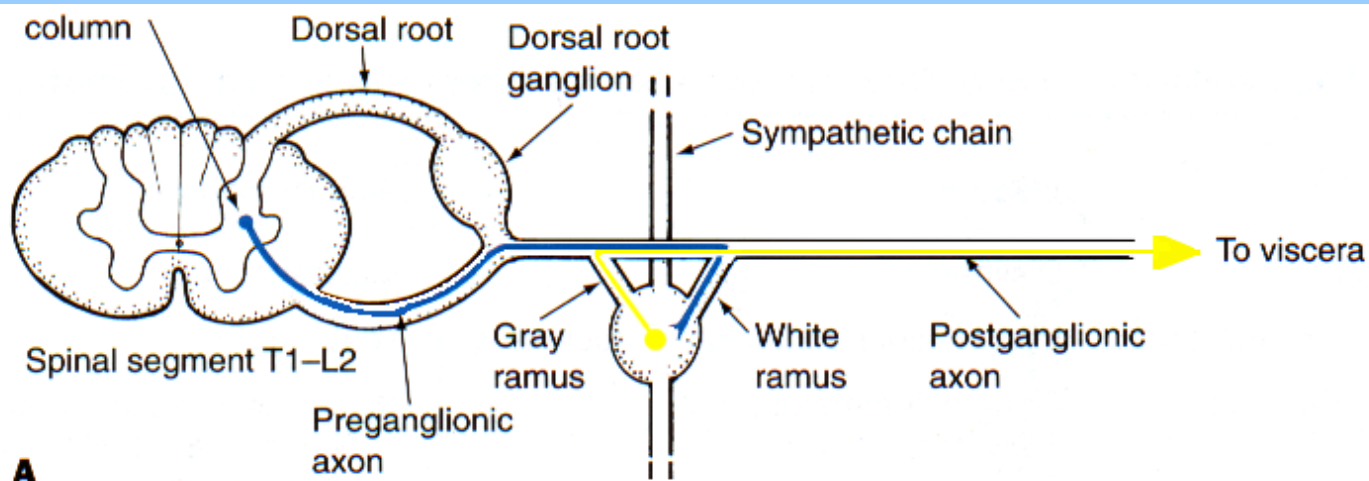
cranio-sacral system (parasympathicus)

thoraco-lumbal system (sympathicus)

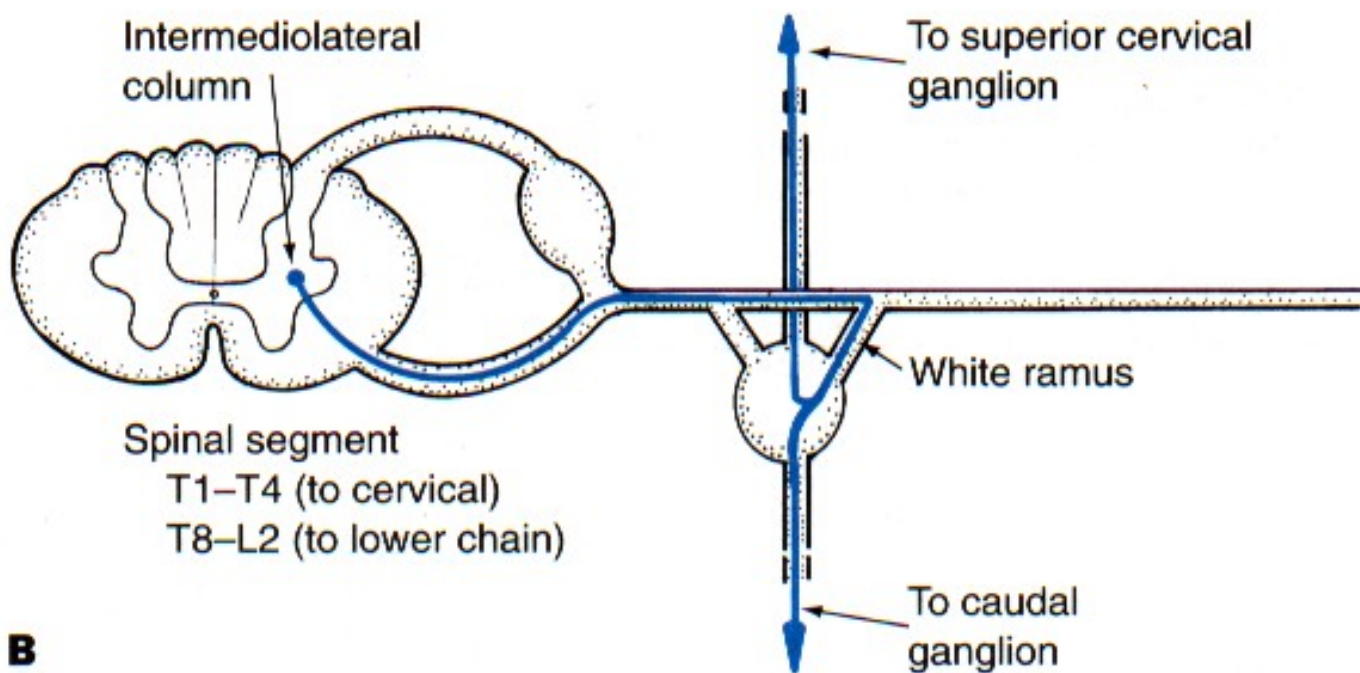
cranio-sacral system (parasympathicus)



A pattern of connections of sympathetic preganglionic axons I-II

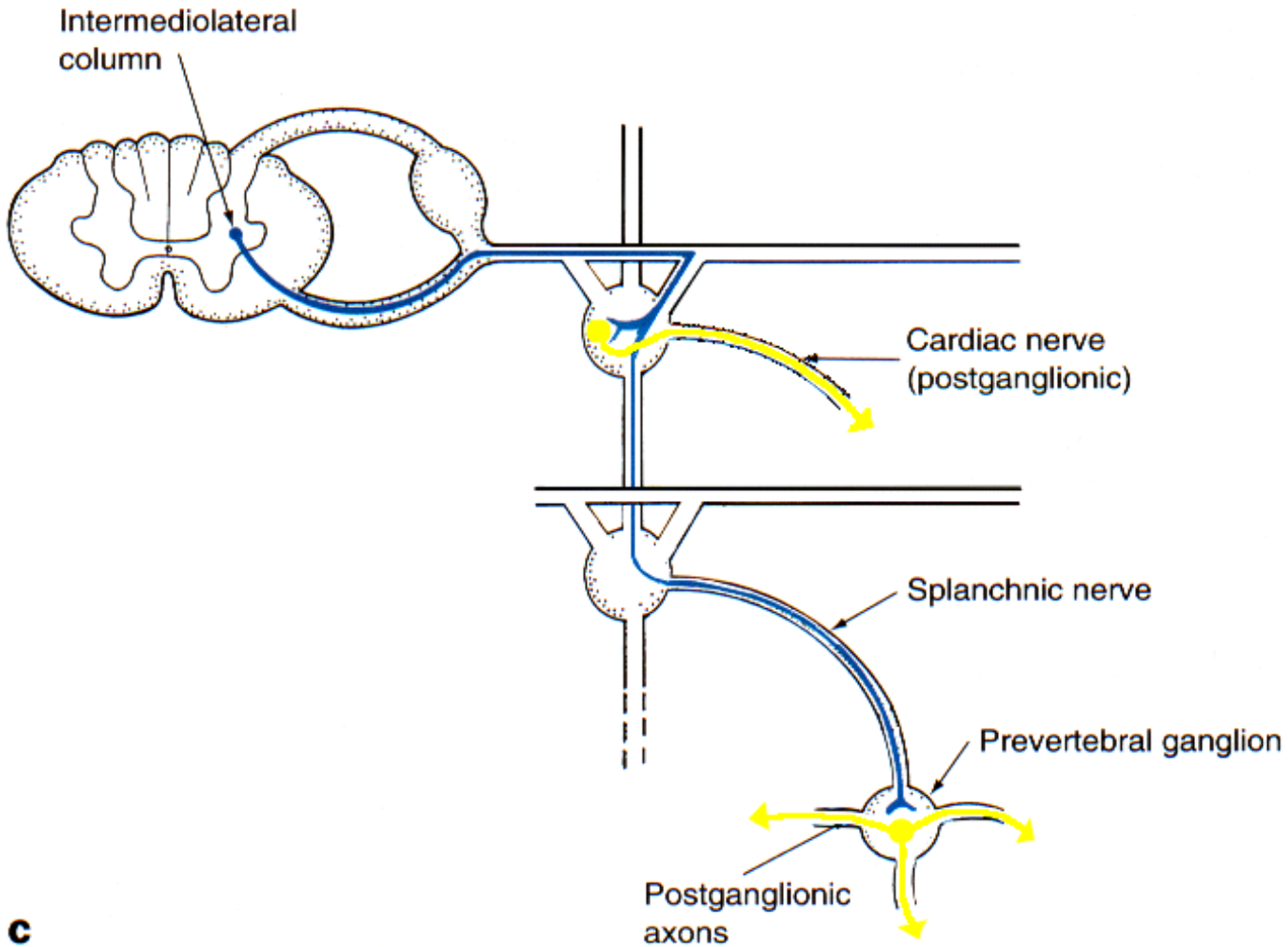


A

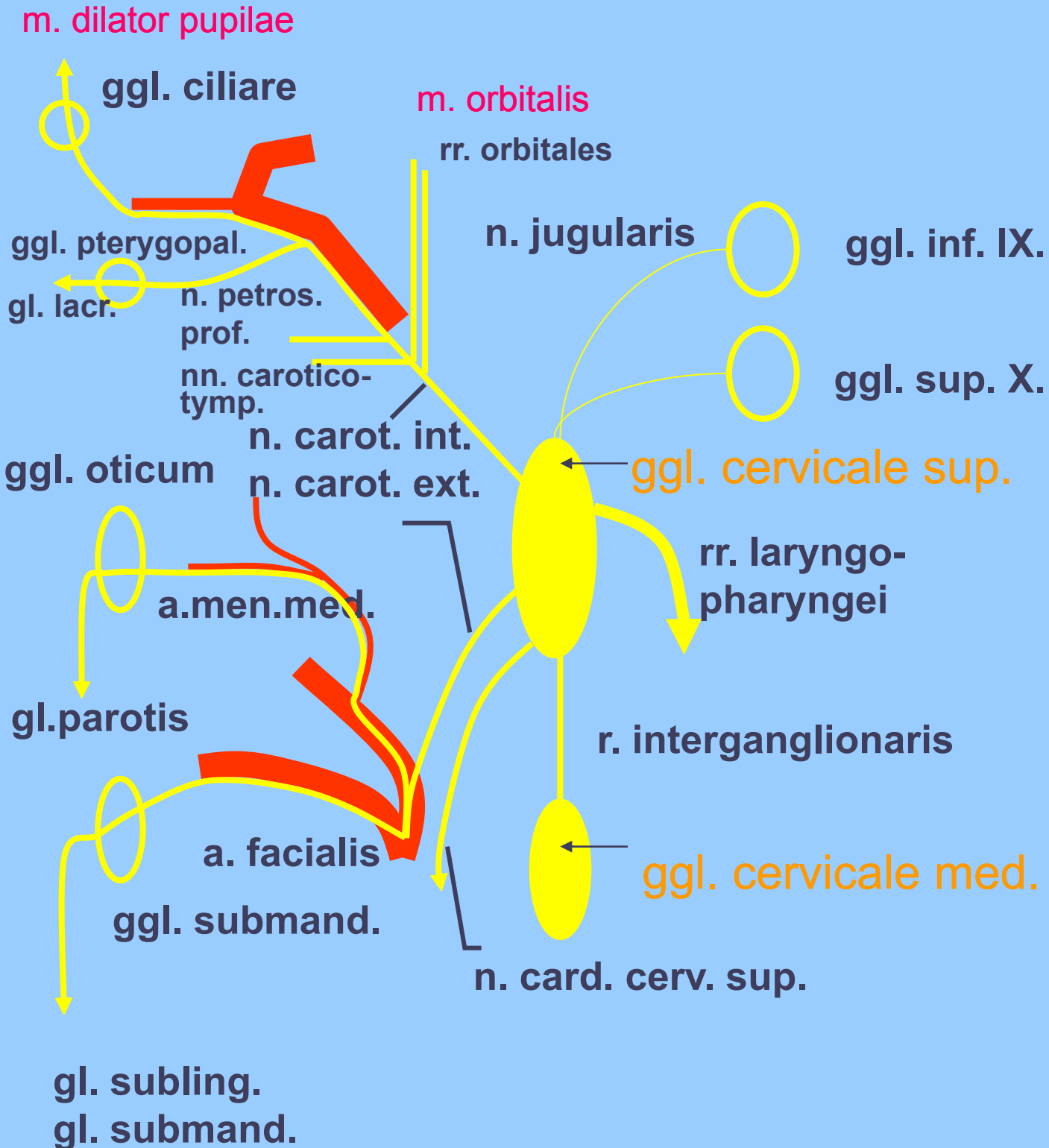


B

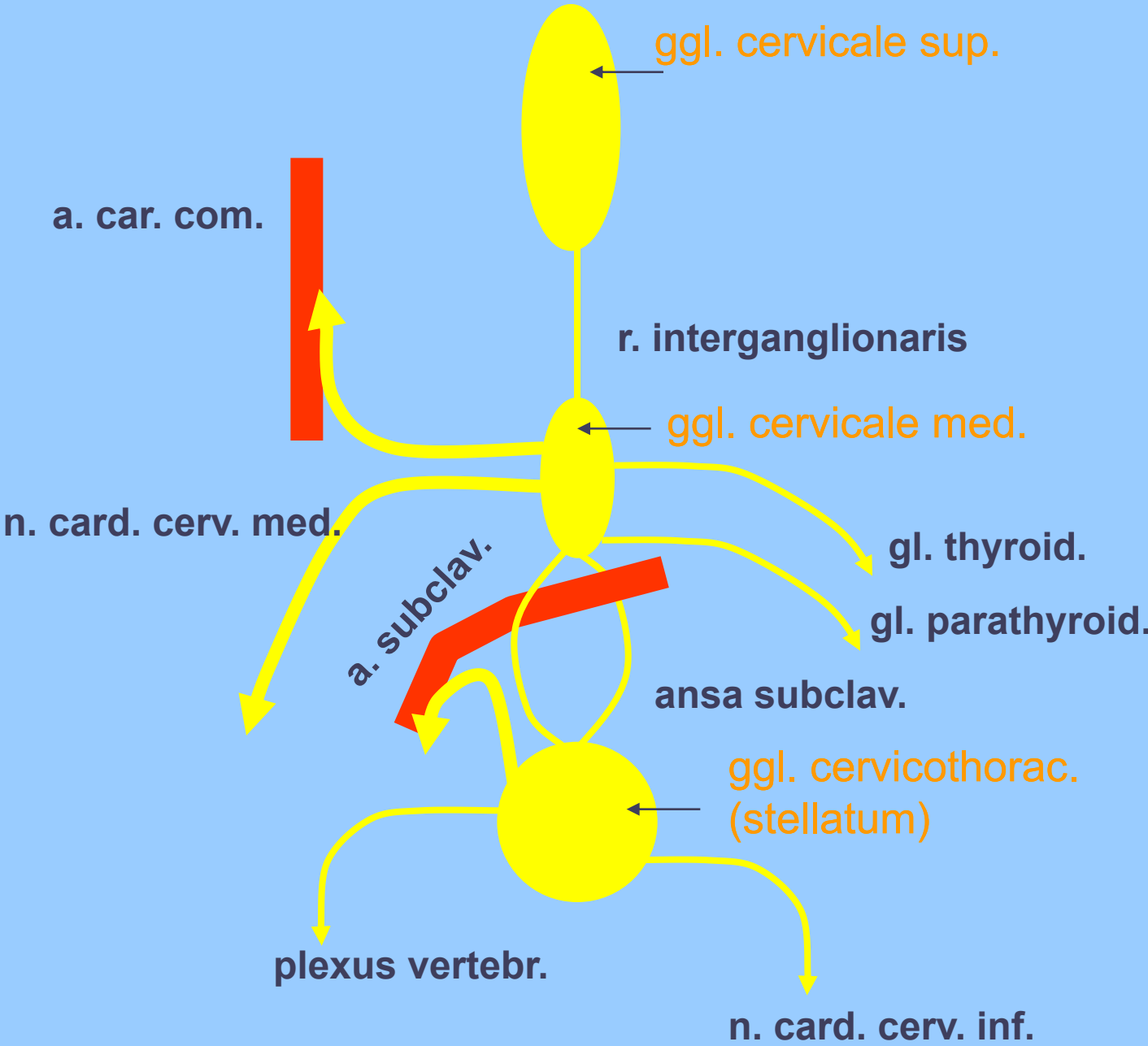
A pattern of connections of sympathetic preganglionic axons III



Ggl. cervicale sup.



Ggl. cervicale med. et stellatum



PARAVERTEBRAL GANGLIA

Th1

rr. vasculares
- from all ganglia

nn. cardiaci th.
rr. pulmonares th.
rr. oesophagei

Th6

rr. comm. grisei
- from all ganglia

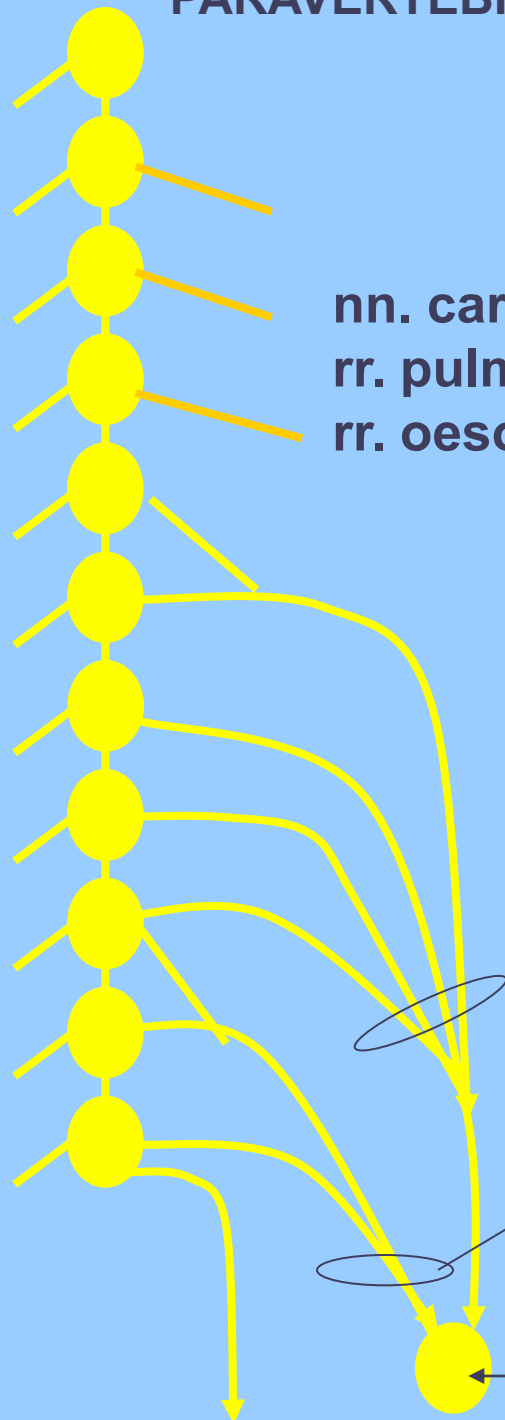
Th9

n. splanchnicus
major

n. splanchnicus
minor

ggl. coeliacum
(prevertebral ggl.)

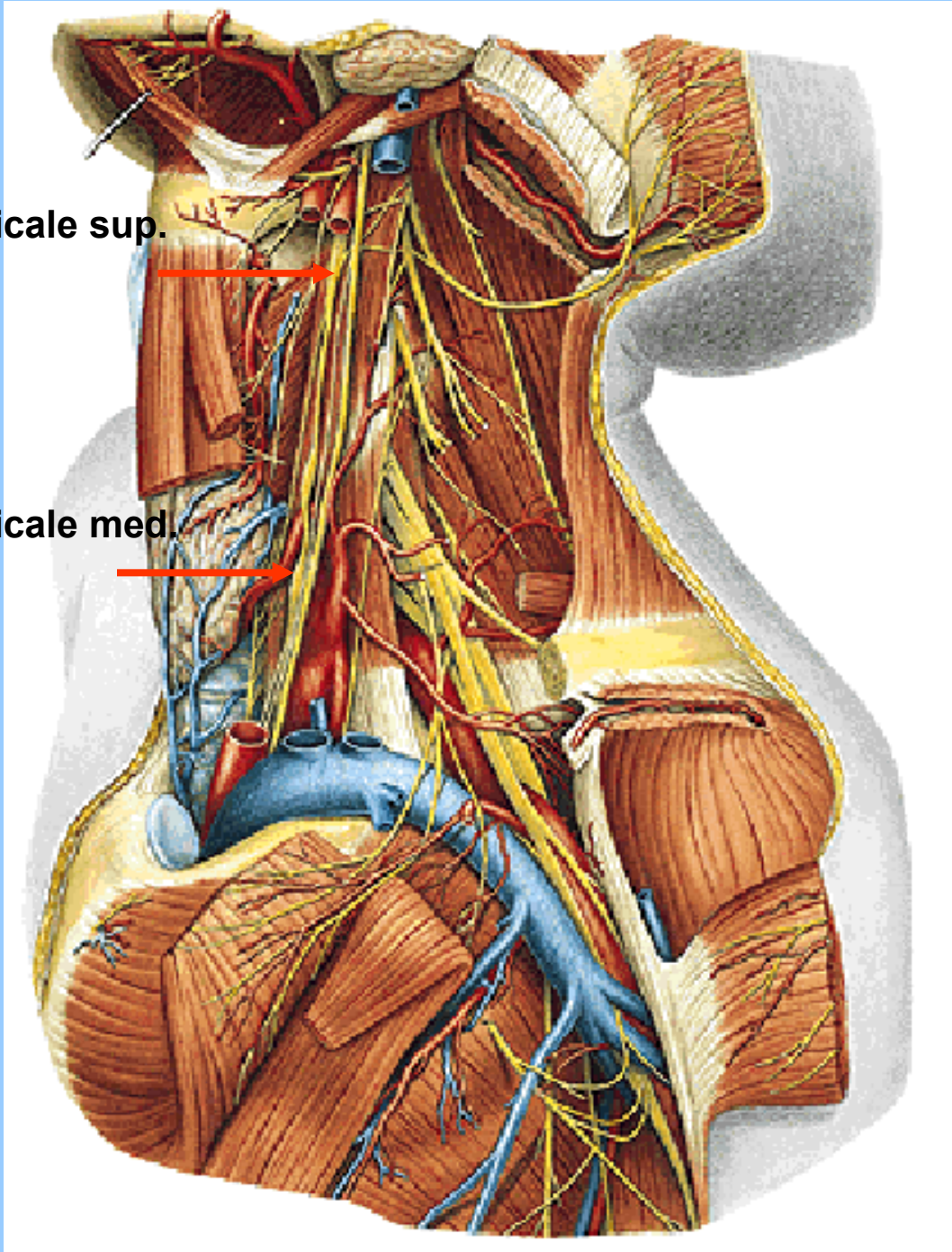
n. splanchnicus
imus (1/3)



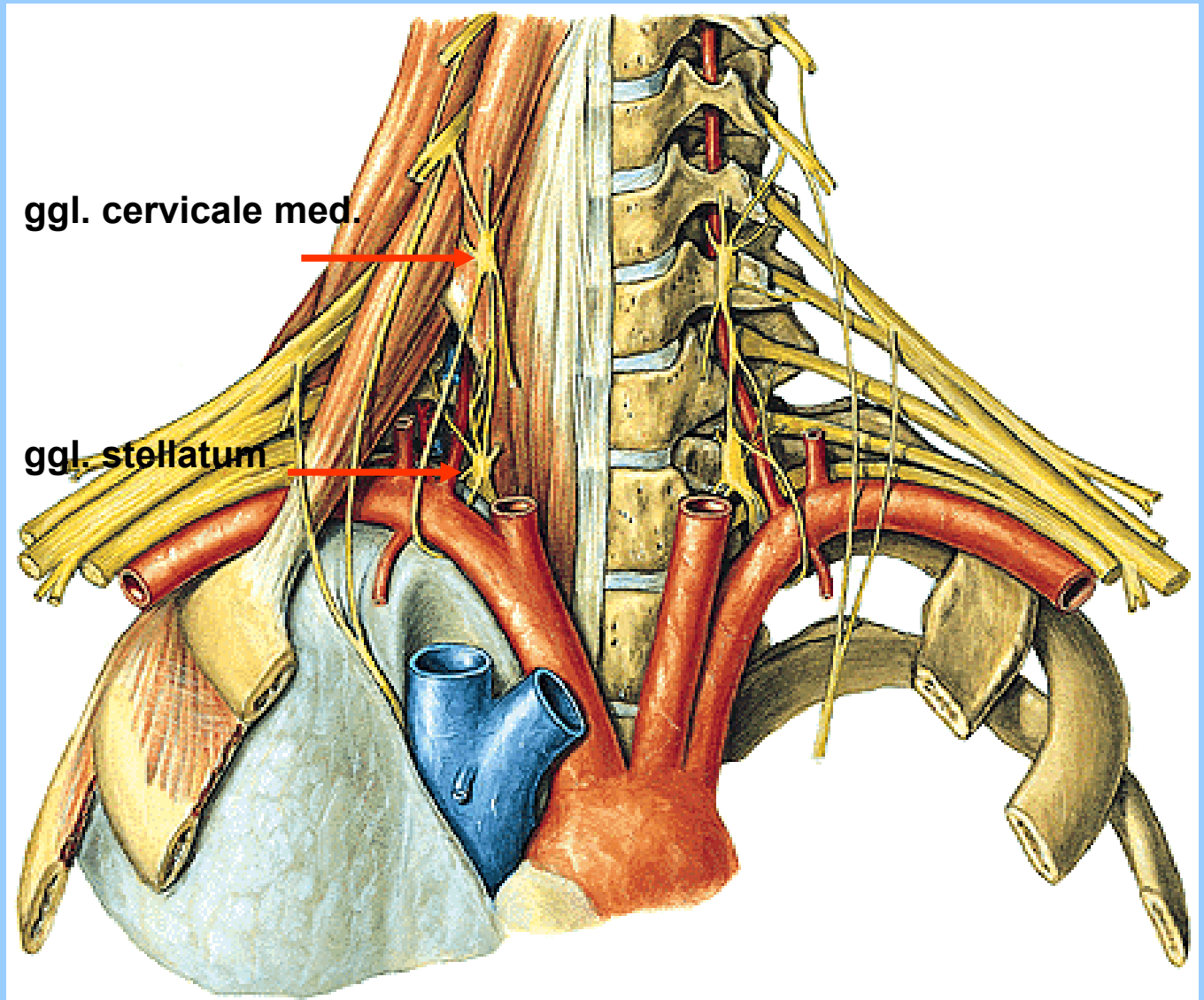
Ganglion cervicale sup. et med.

ggl. cervicale sup.

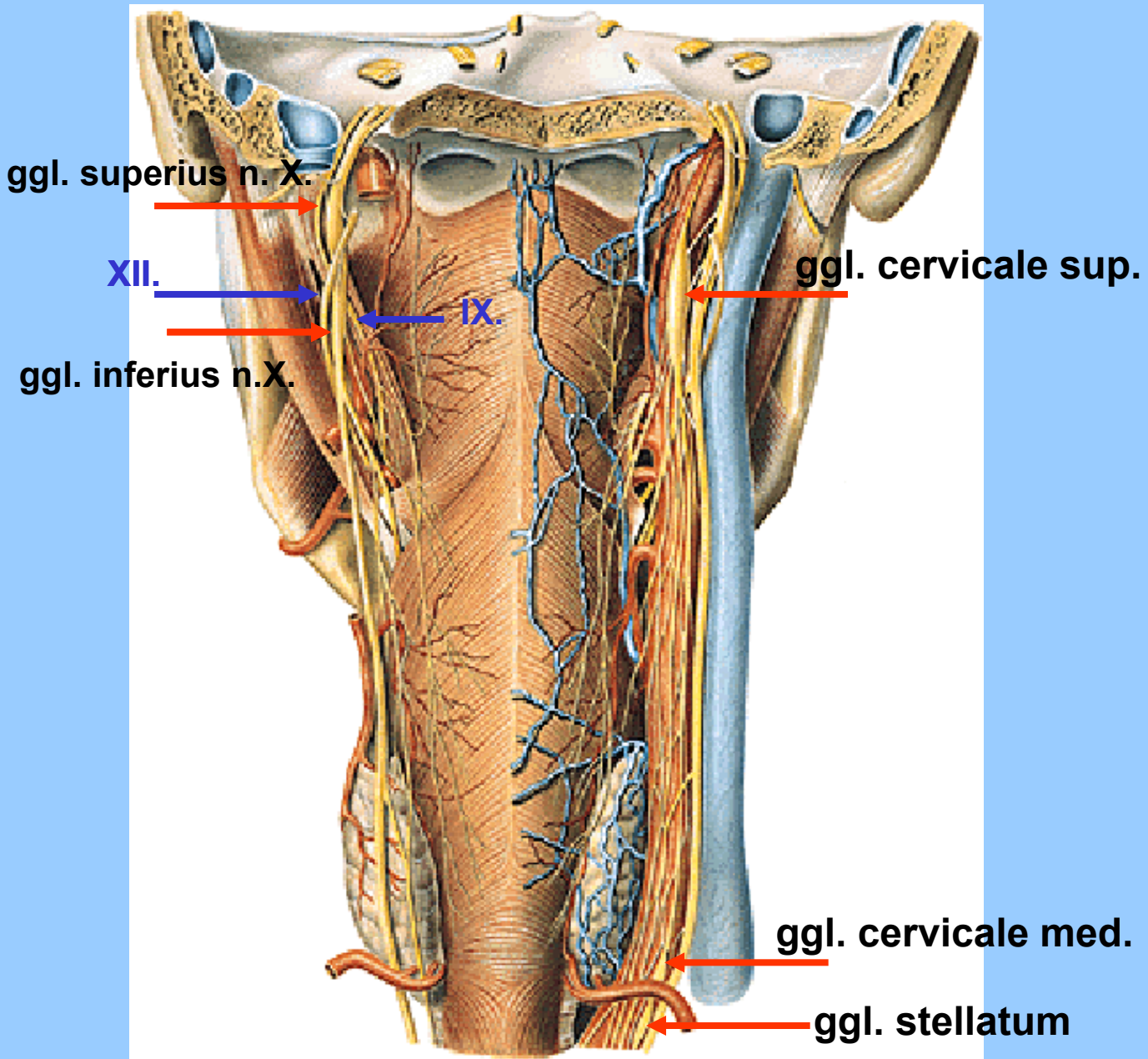
ggl. cervicale med.



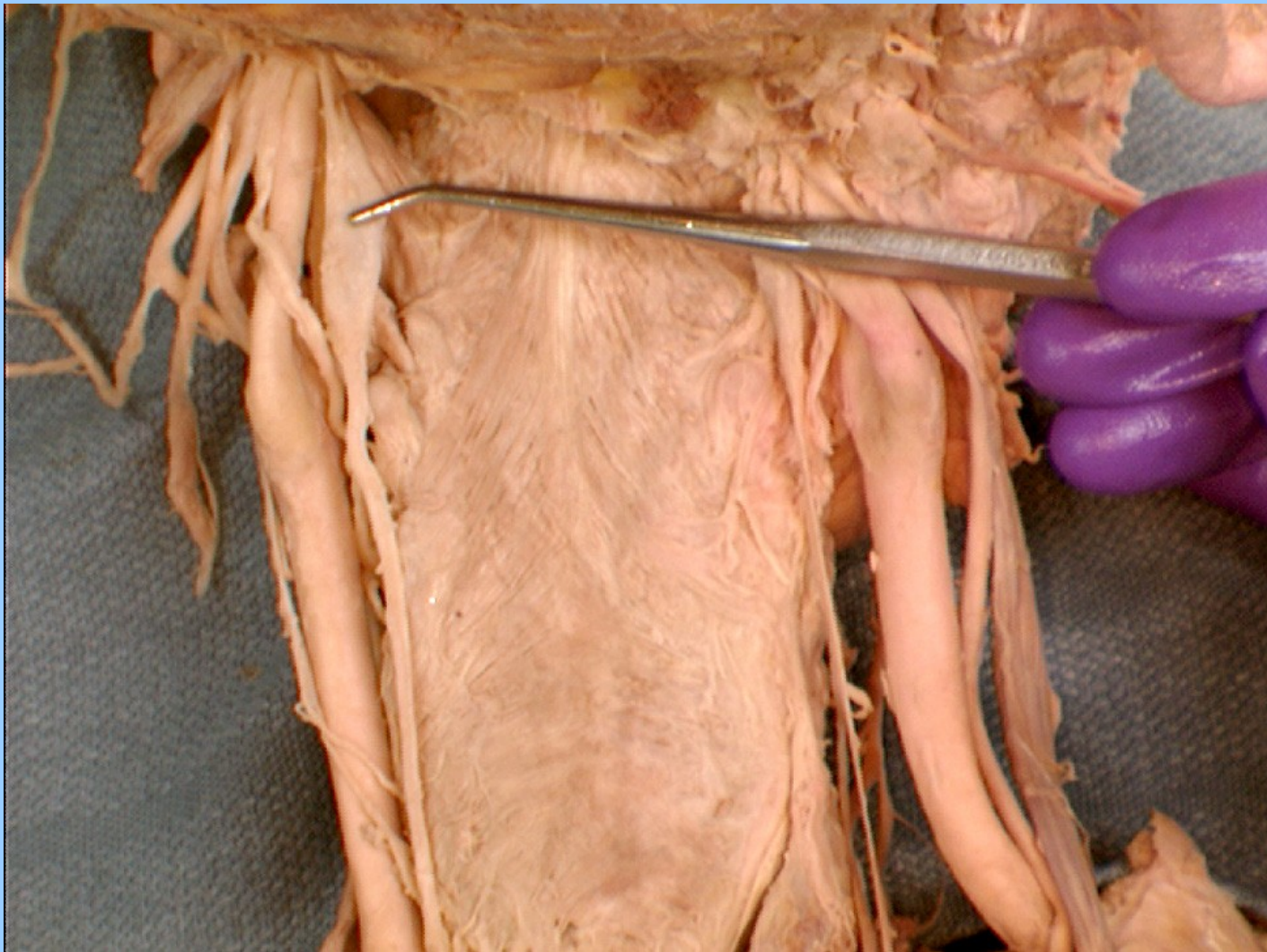
Ganglion cervicale med. et stellatum



Ganglion cervicale sup. et med.



GANGLION CERVICALE SUP.



INNERVATION OF THE HEART

ggl. cervicale sup.



ggl. cervicale med.



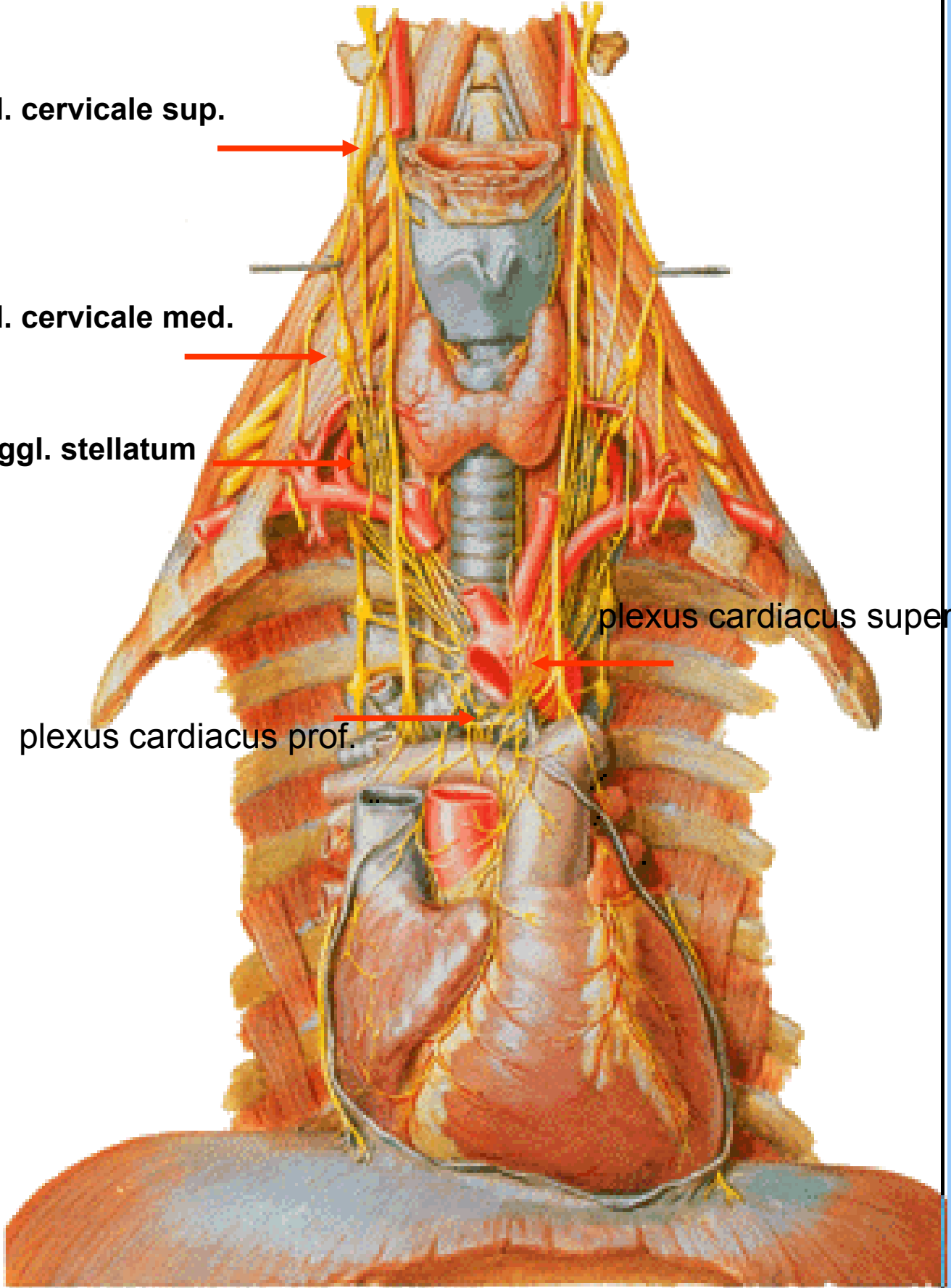
ggl. stellatum

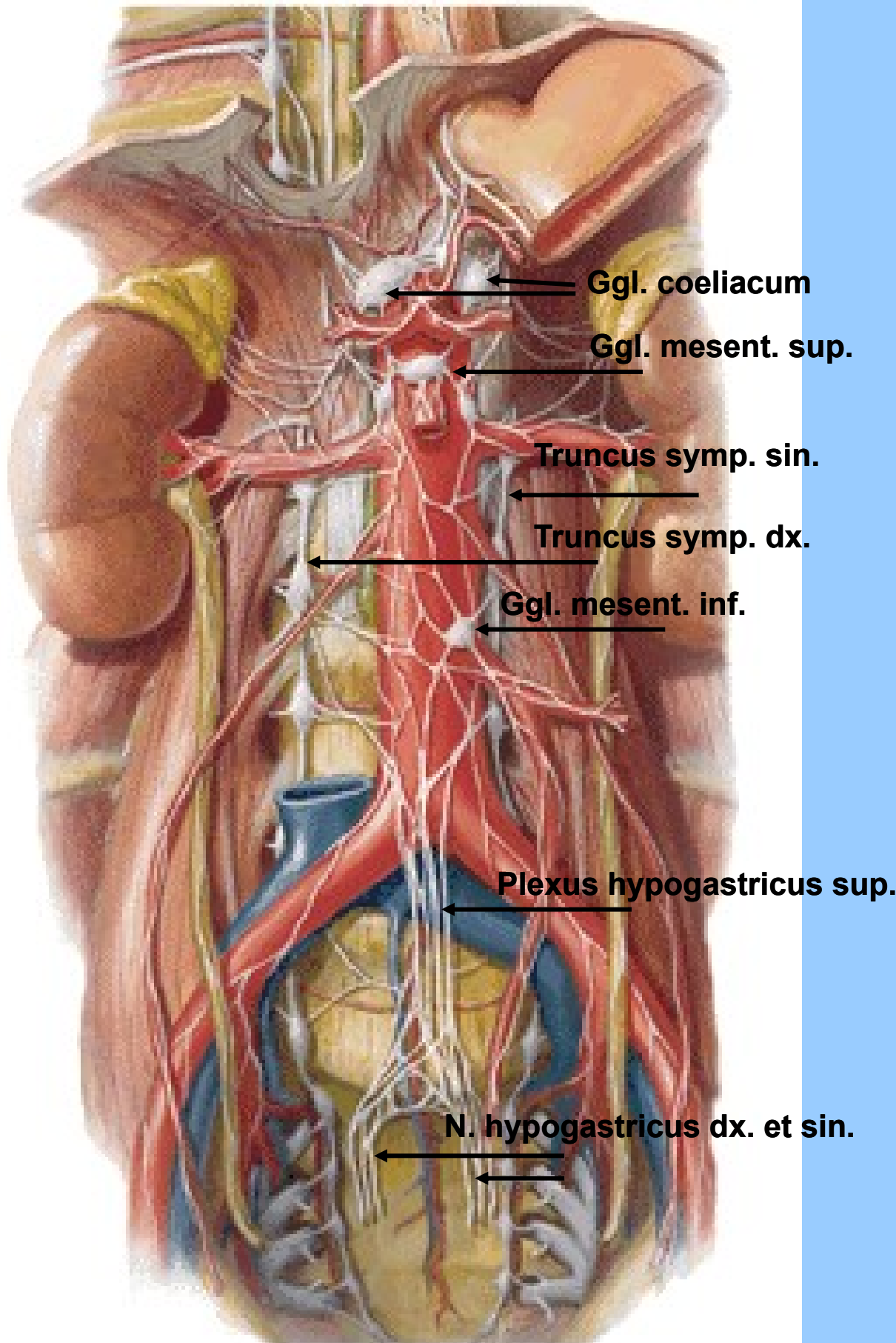


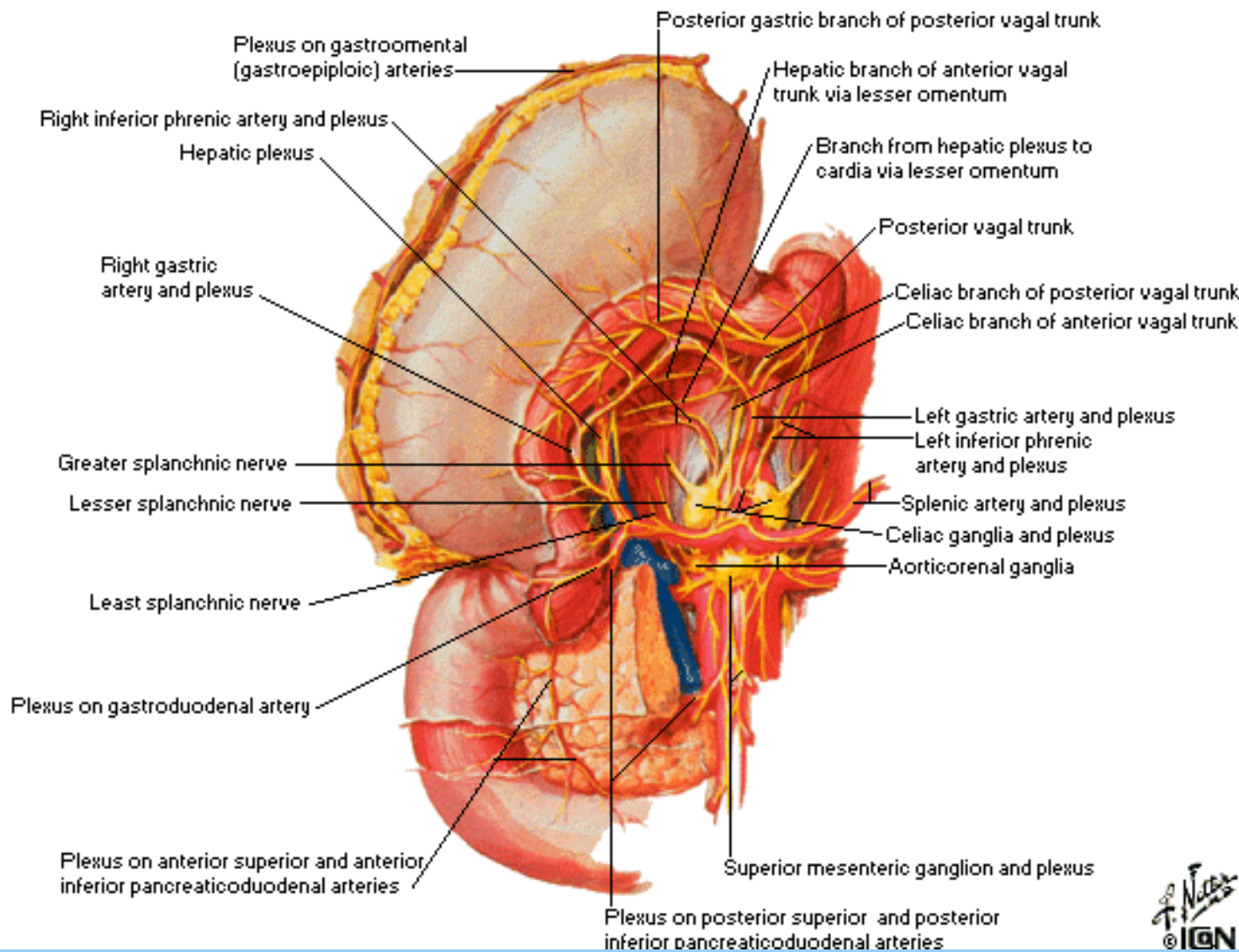
plexus cardiacus superf.

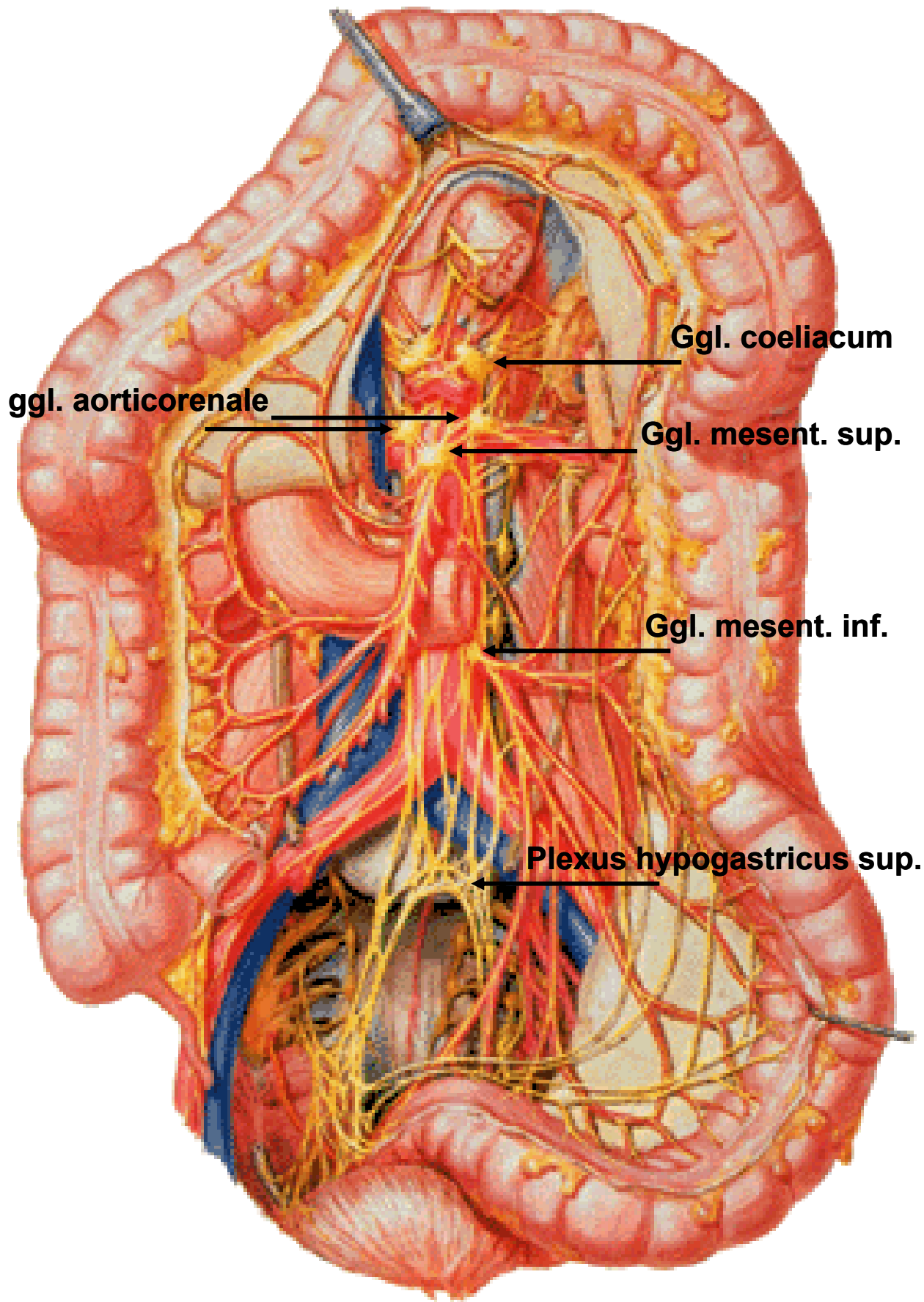


plexus cardiacus prof.









Prevertebral ganglia

ggl. coeliacum

ggl. mesentericum superius

ggl. mesentericum inferius

ggl. aorticorenale

Plexus aorticus lumbalis

ggl./plexus coeliacus

plexus gastricus dx., sn.

plexus hepaticus

plexus lienalis

plexus duodenalis

plexus pancreaticus

plexus uretericus

plexus testicularis/ovaricus

ggl. mesentericum superius

plexus mesentericus superior

ggl. mesentericum inferius

plexus mesentericus inferior

plexus rectalis superior

Plexus hypogastricus superior et inferior

modulation by
sympath. &
parasympath.
fibers

stratum longitudinale

Auerbach's
network

stratum circulare

Meissner's
network

I. muscularis

mucosae



enteric motor (parasympath.) neuron



enteric interneuron



enteric viscerosensory neuron

