

**PROJECTION OF ORGANS
ONTO THE THORACIC WALL**

**Regio infraclavicularis
(trig. deltopectorale)**

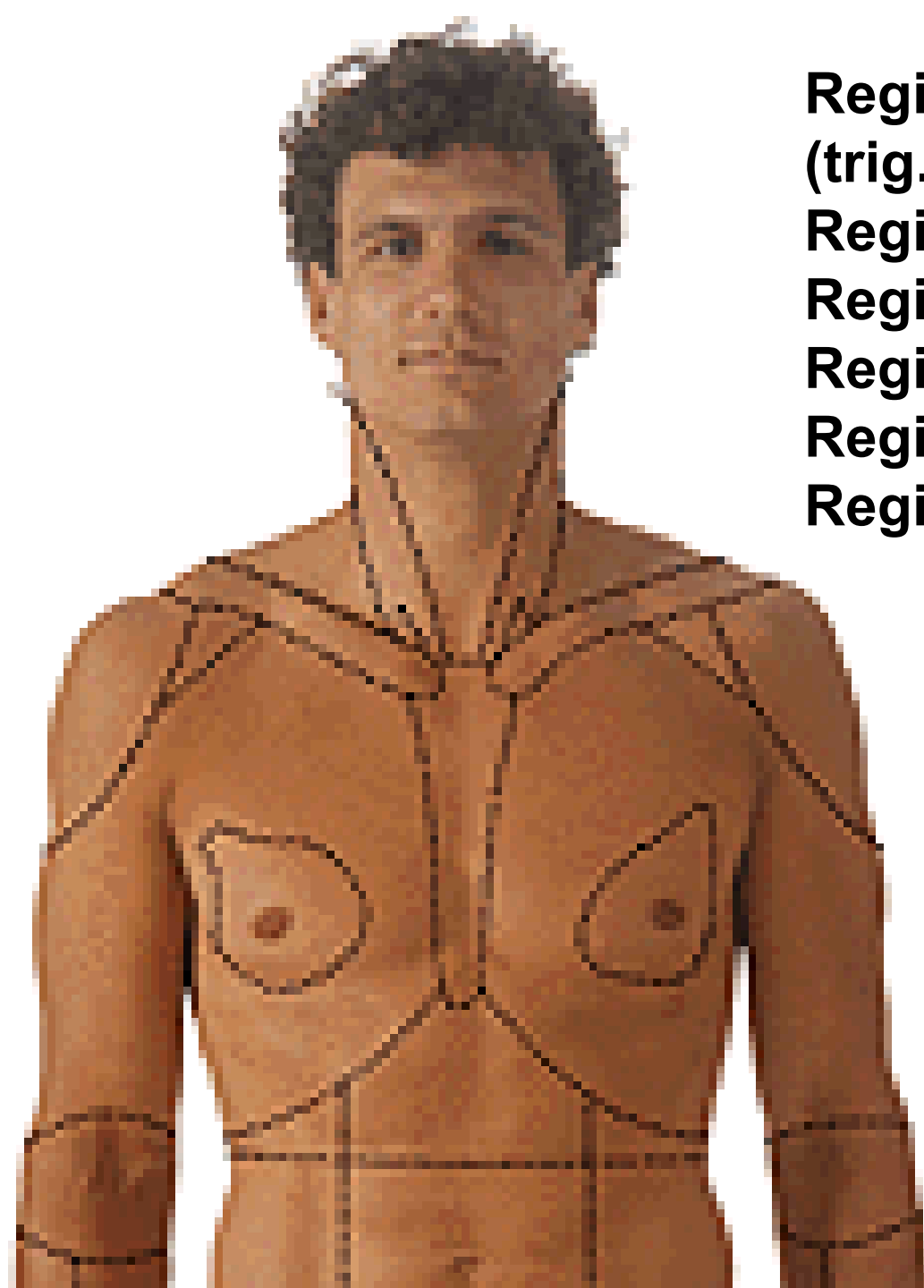
Regio pectoralis

Regio axillaris

Regio mammaria

Regio sternalis

Regio hypochondriaca dx. et sin.





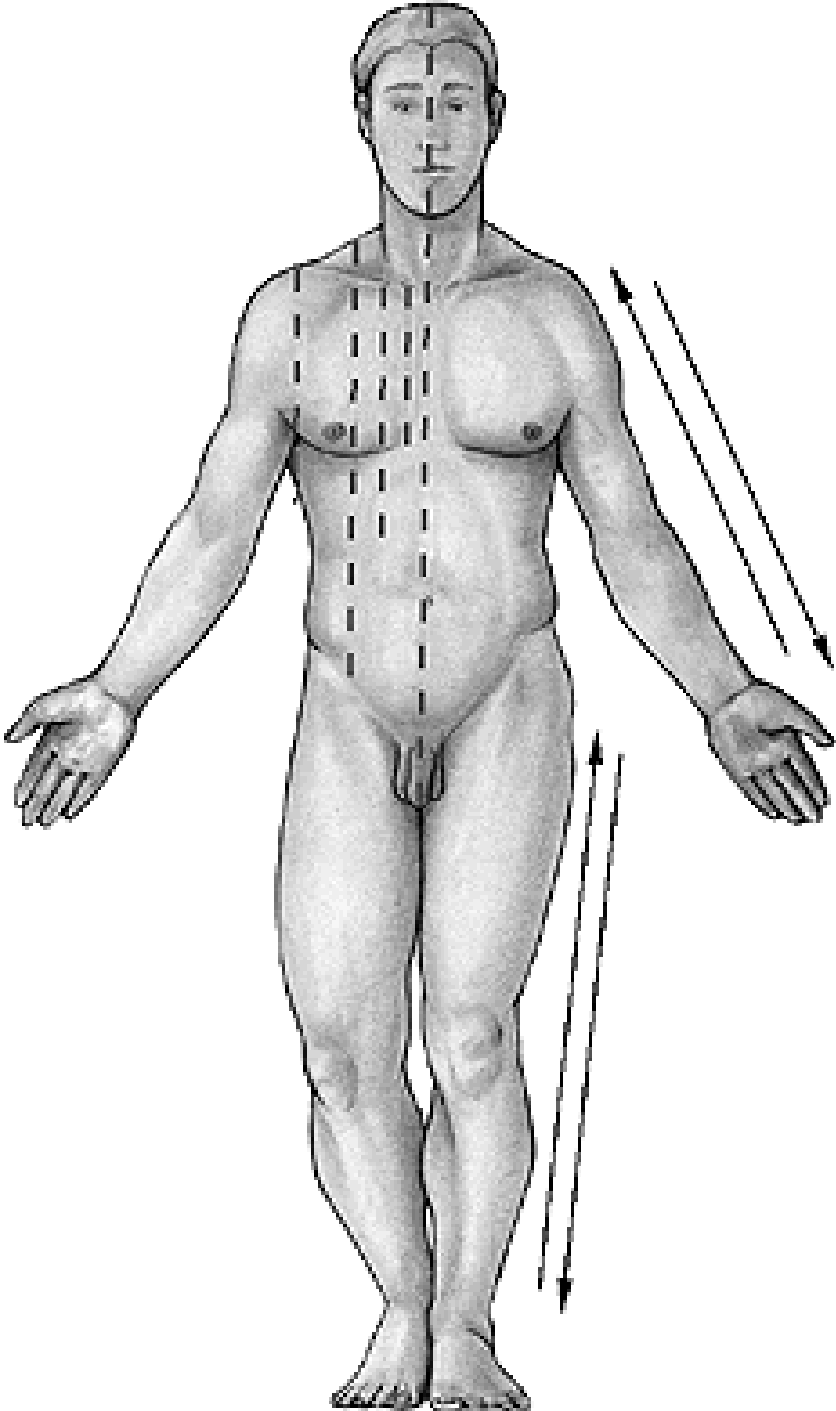
Regio vertebralis

Regio suprascapularis

Regio scapularis

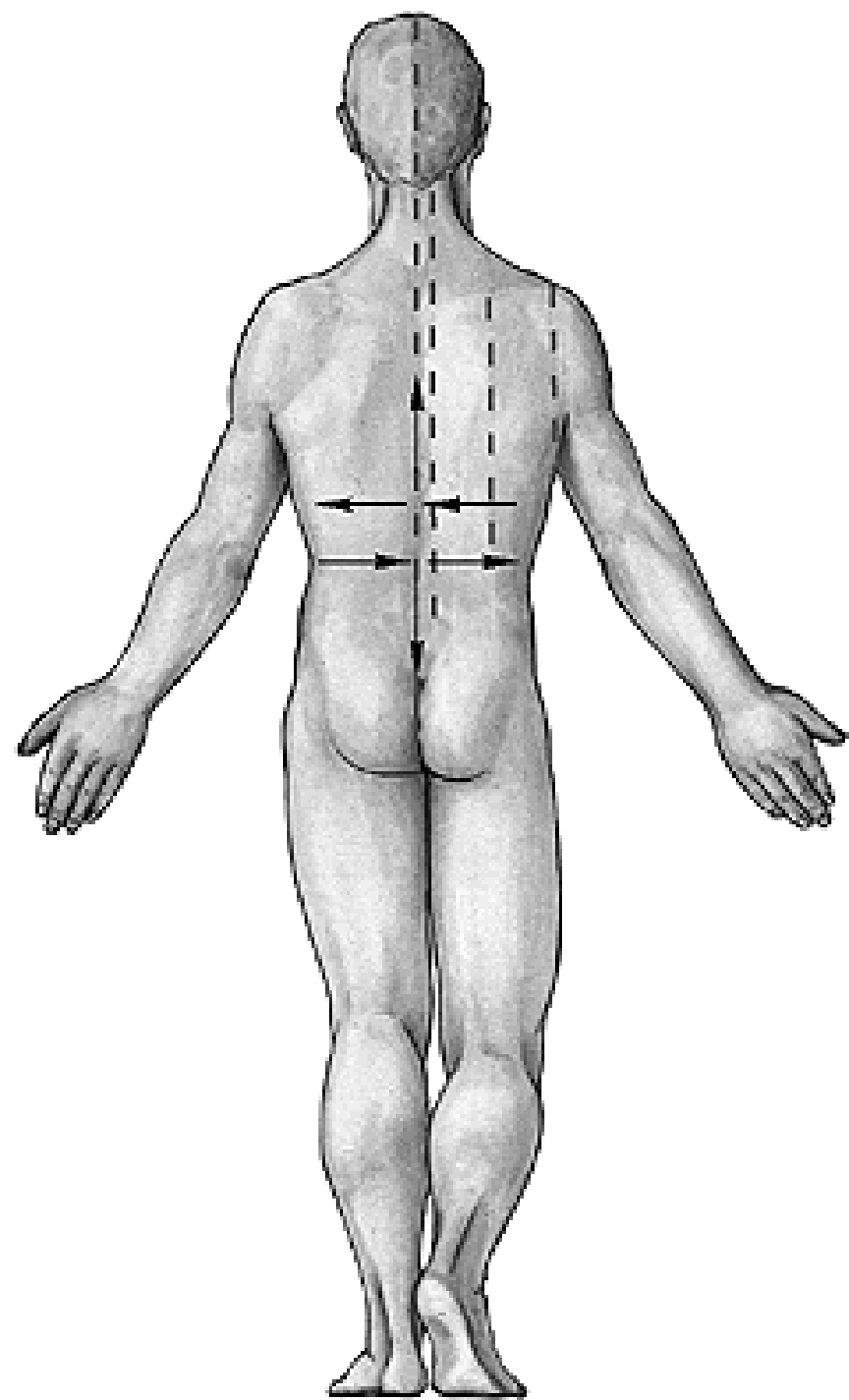
Regio infrascapularis

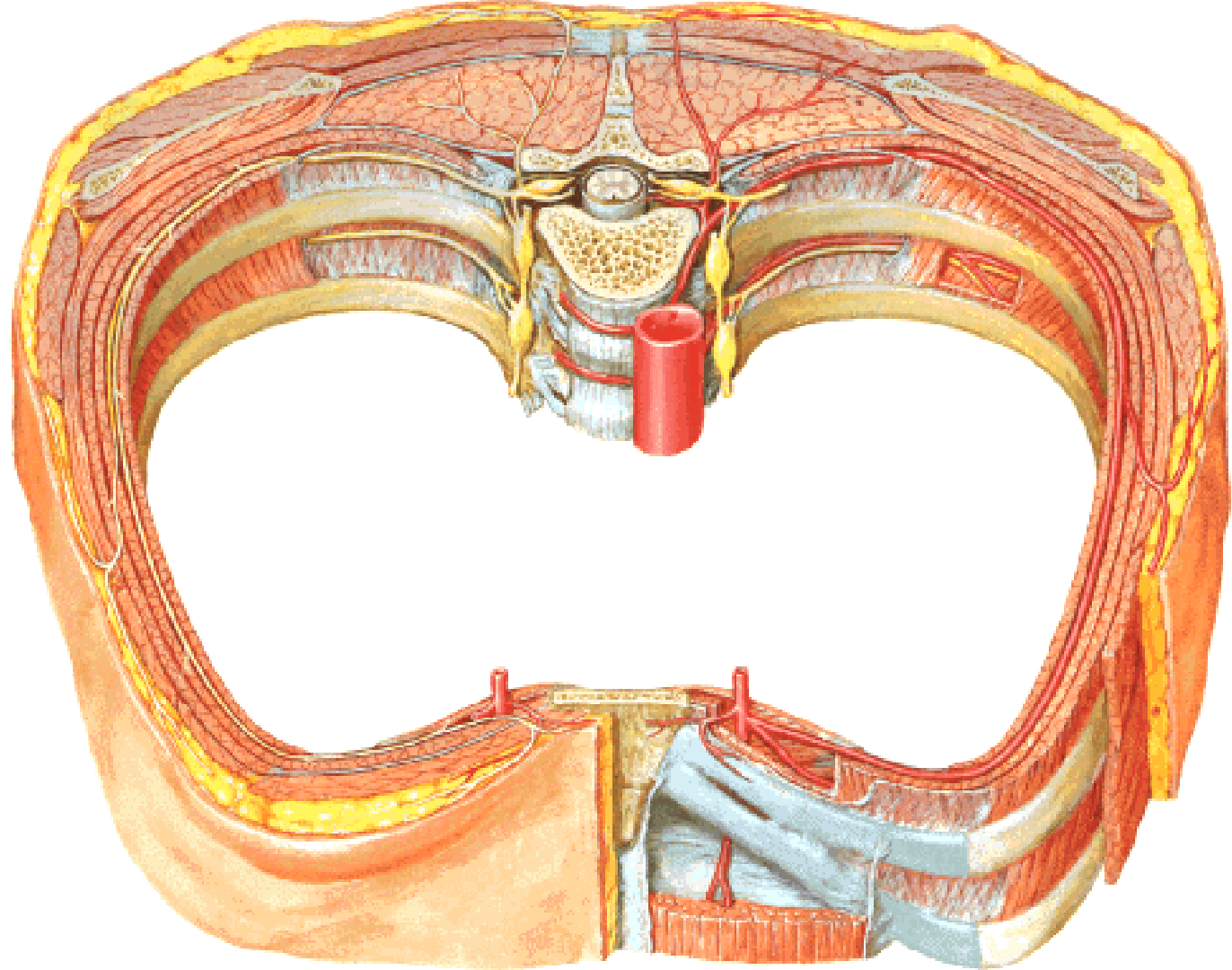
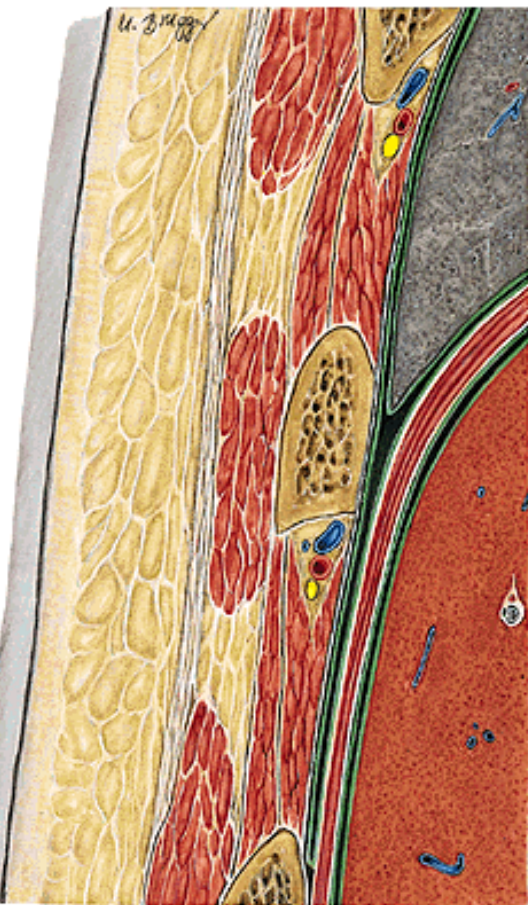
Regio axillaris

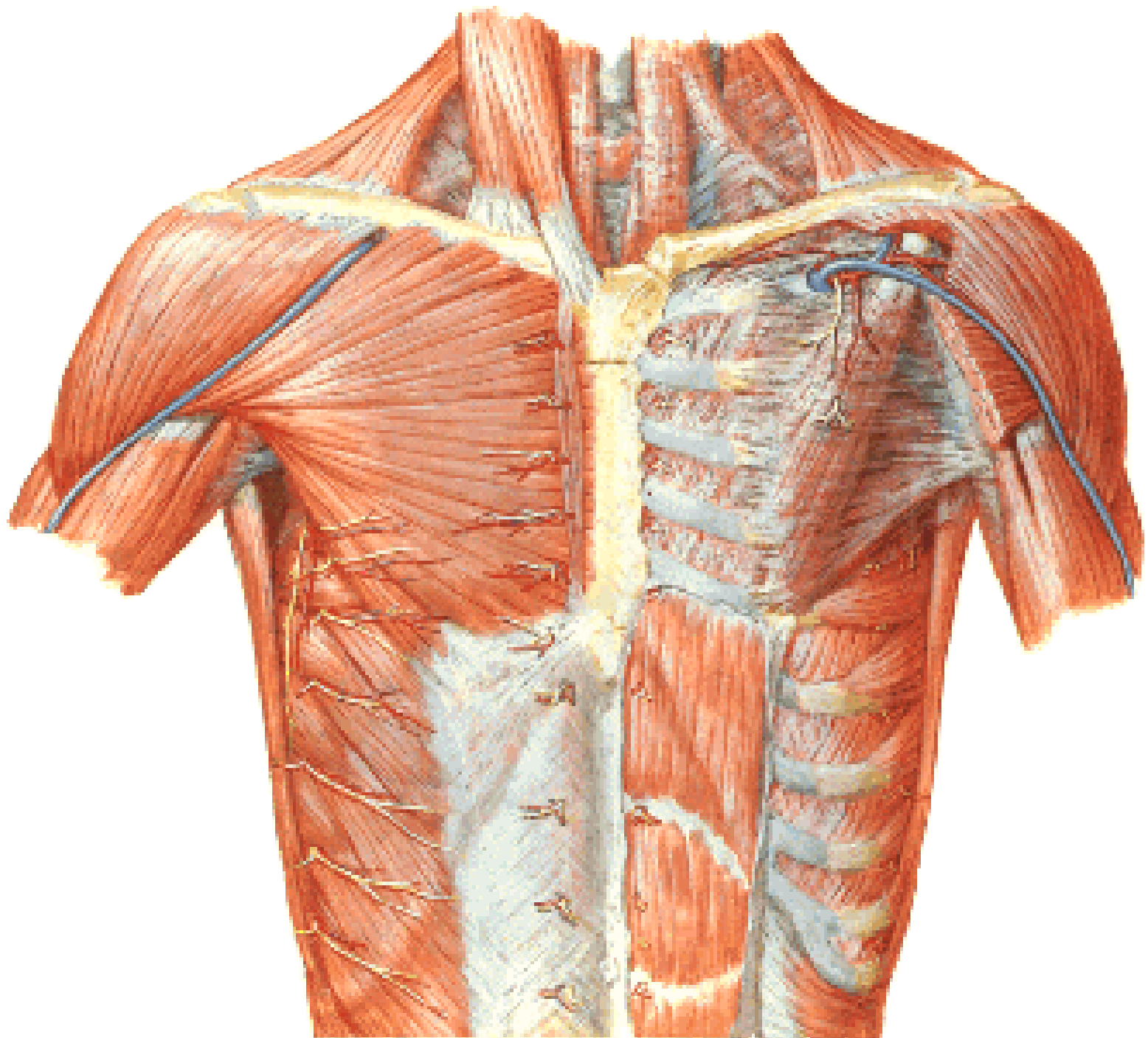


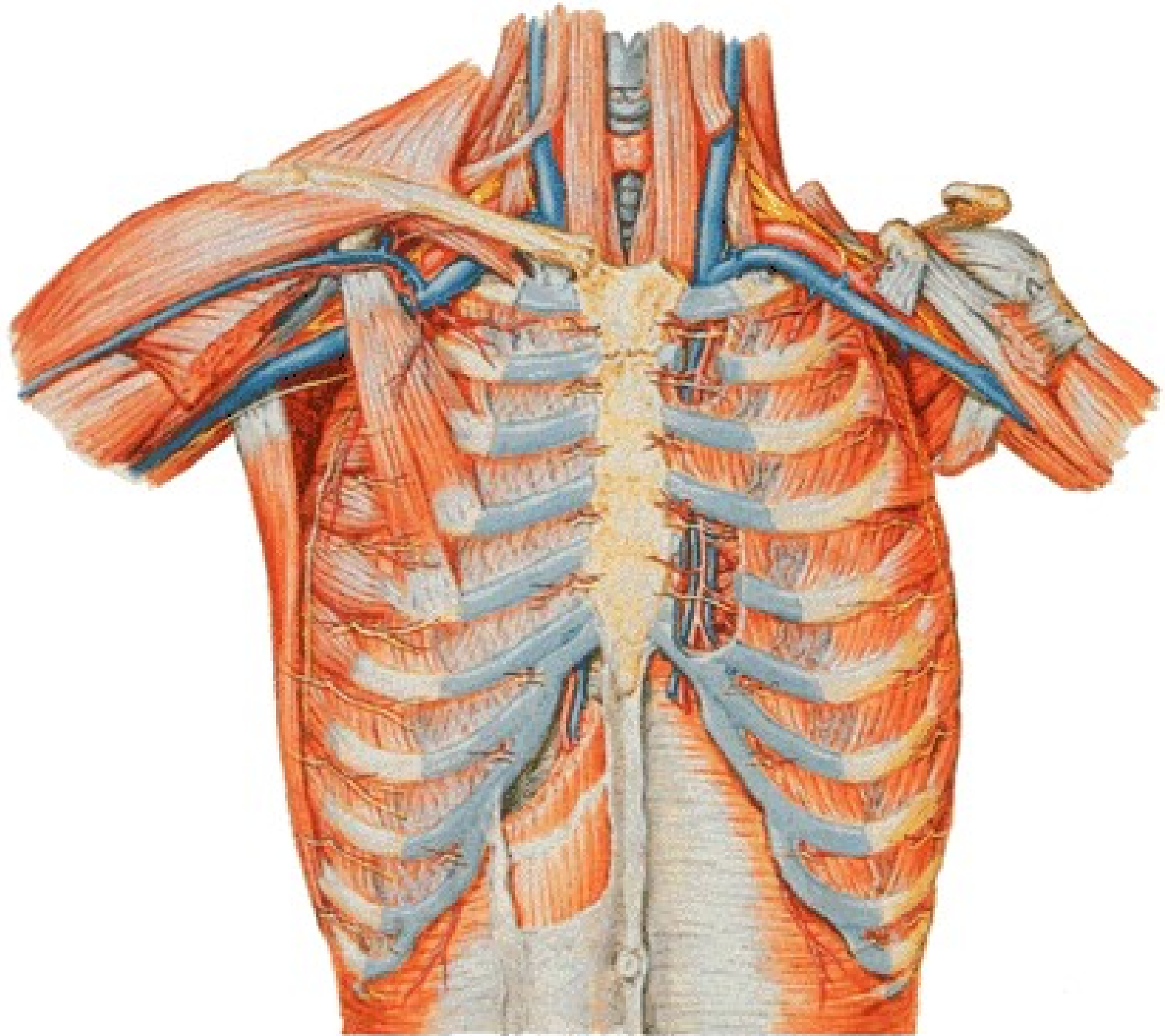
- Linea mediana anterior**
- Linea sternalis**
- Linea parasternalis**
- Linea medioclavicularis**
- Linea axillaris ant.**
- Linea axillaris media**

Linea axillaris post.
Linea scapularis
Linea paravertebralis
Linea mediana post.

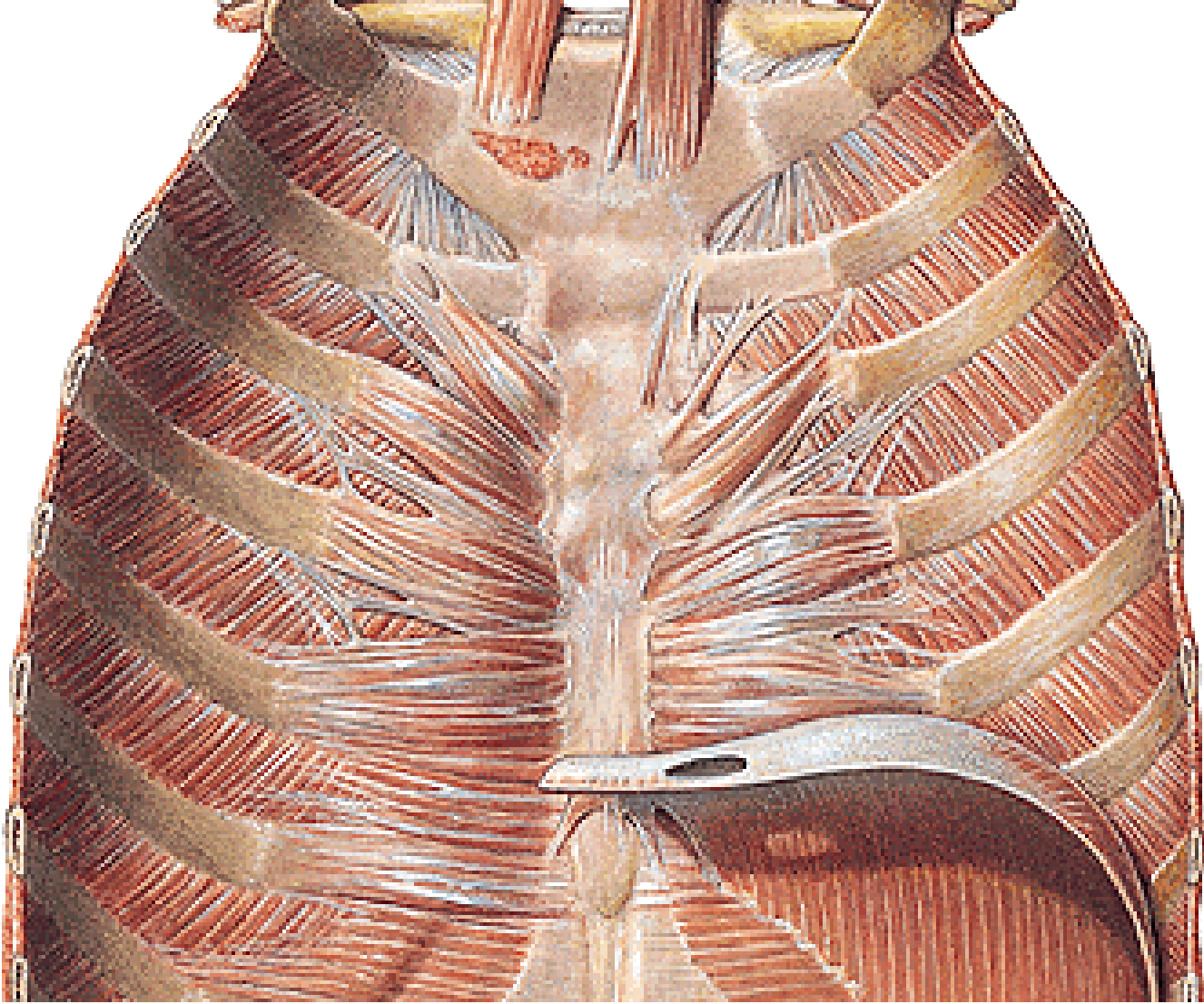


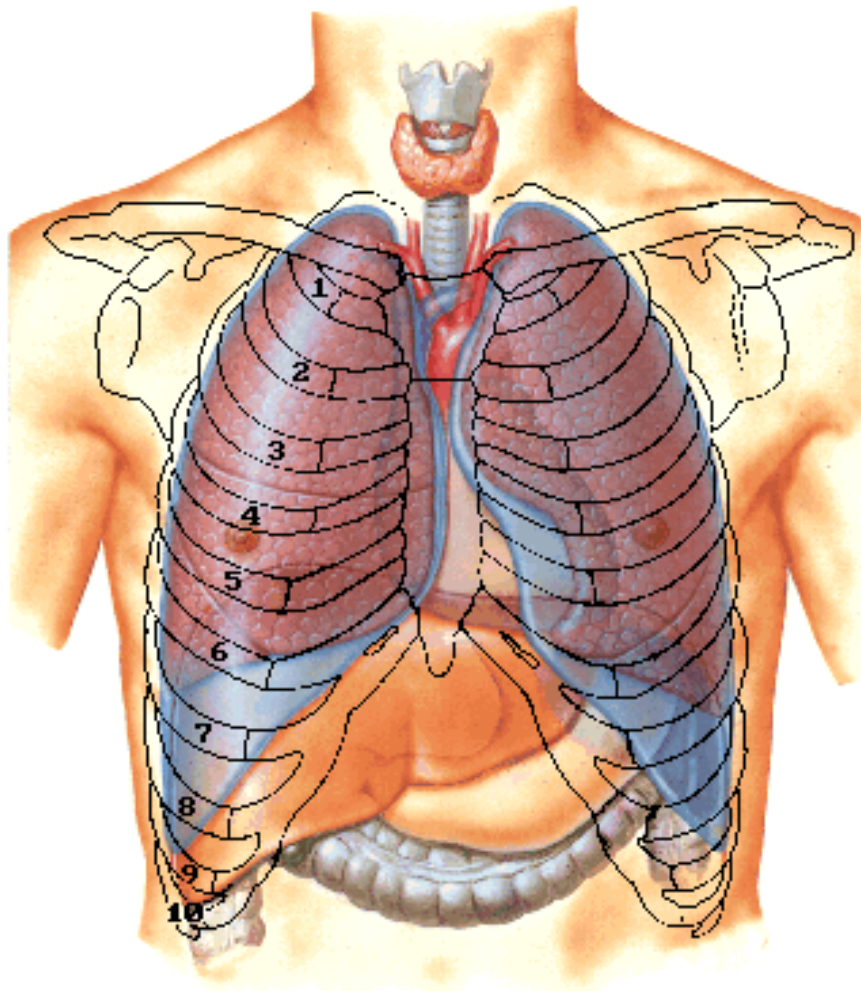






VAN

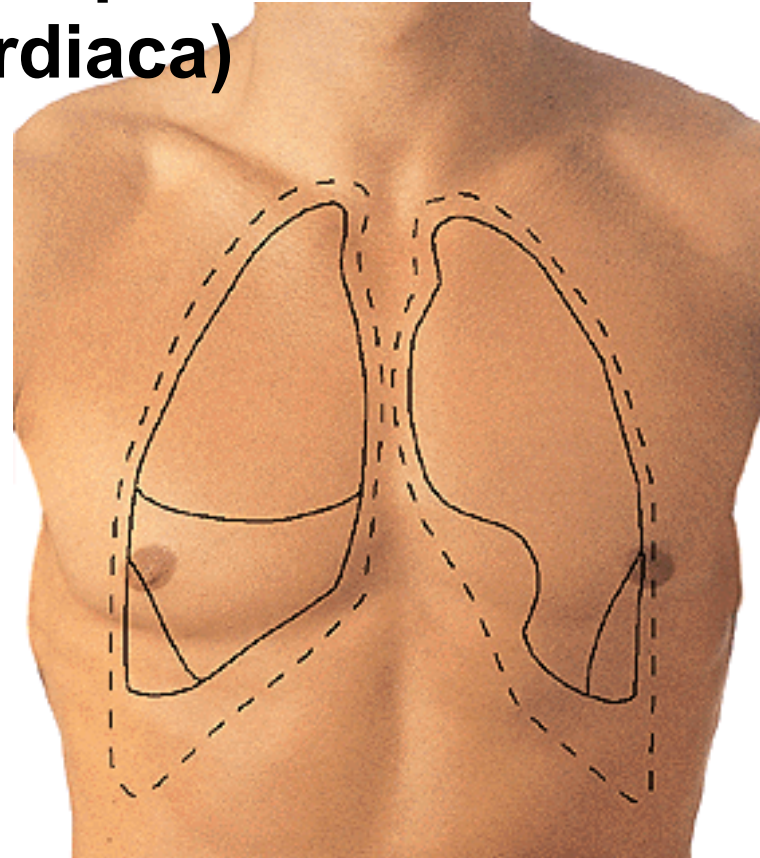


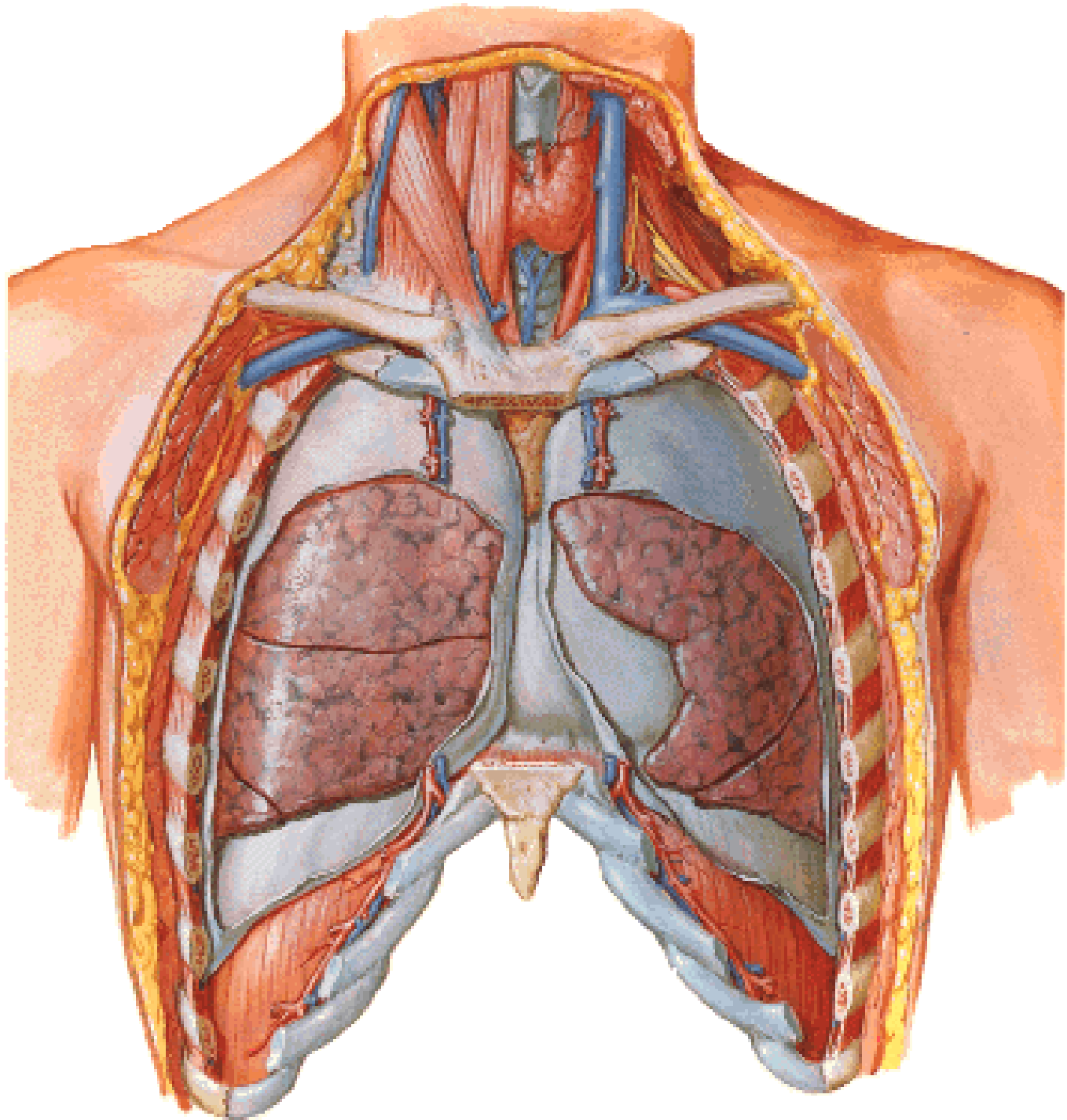


**Cupula pleurae
= Apex pulmonis**

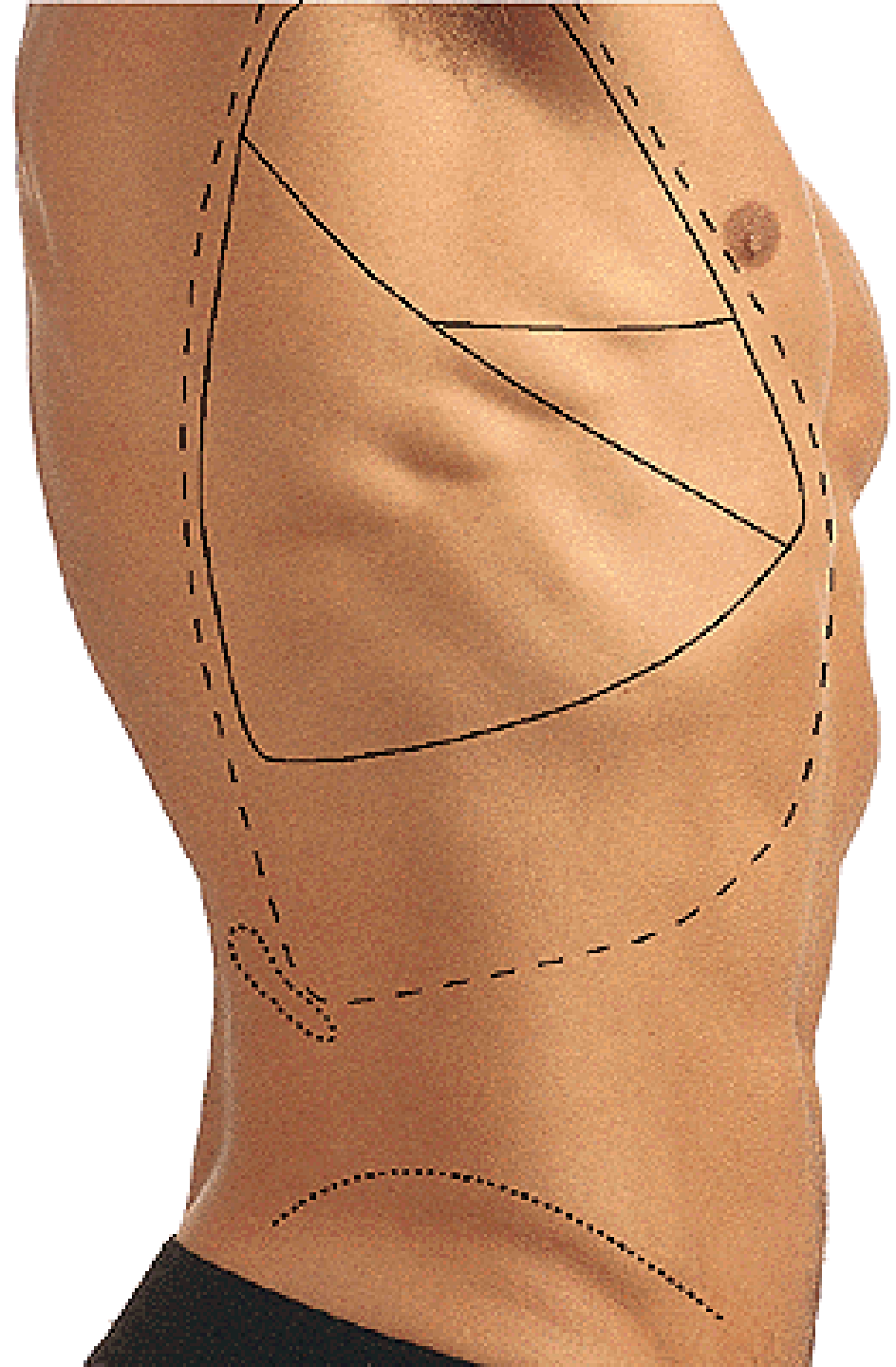
**Area interpleuralis sup.
(thymica)**

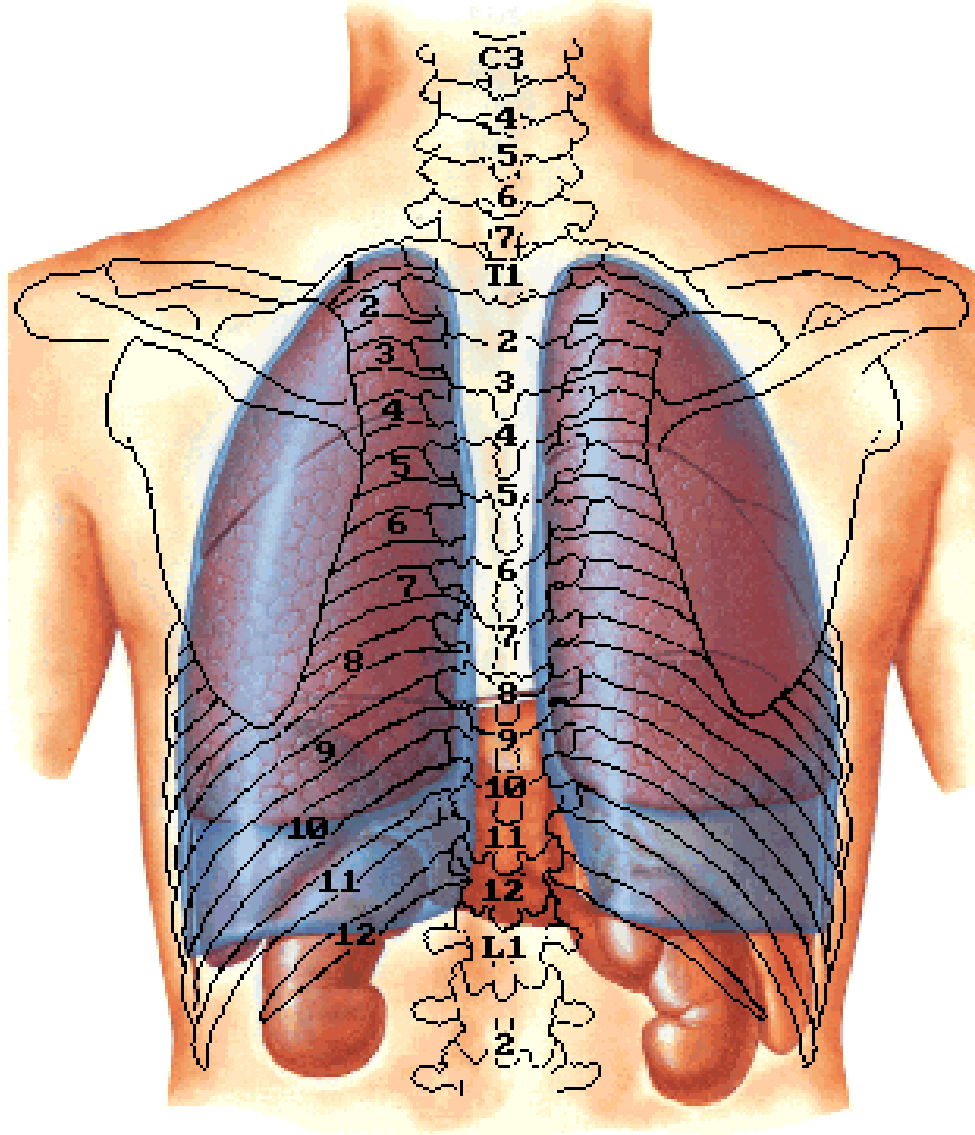
**Area interpleuralis inf.
(pericardiaca)**

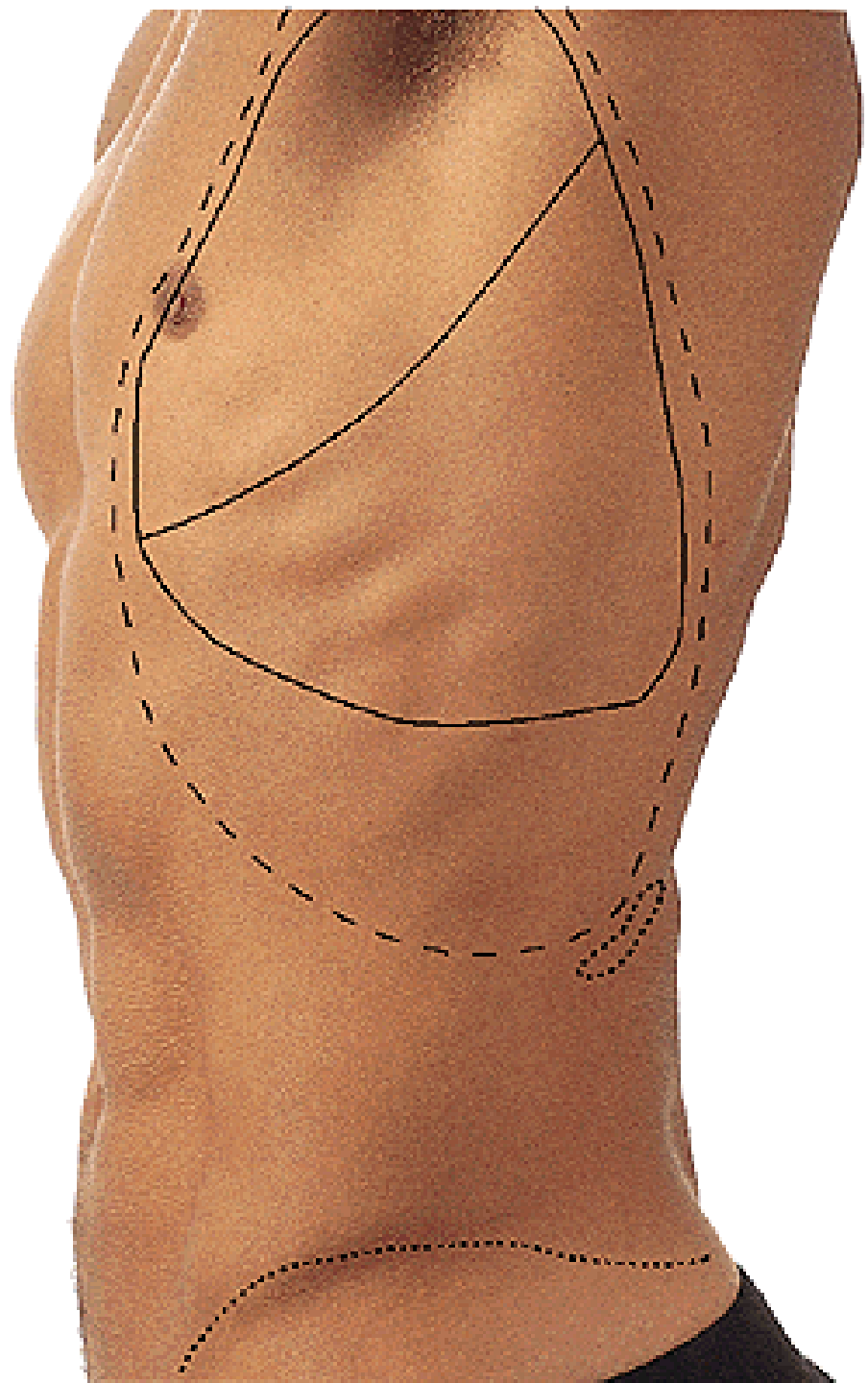


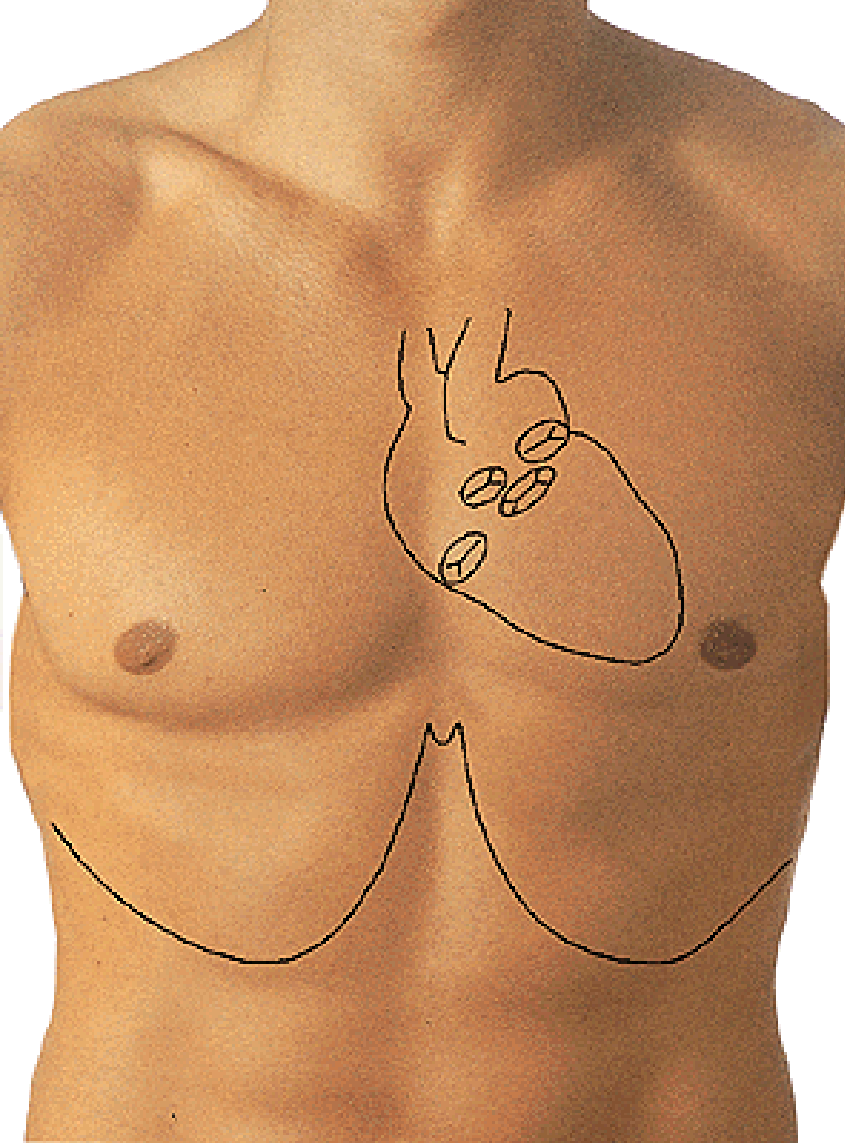


Fissura obliqua
Fissura horizontalis







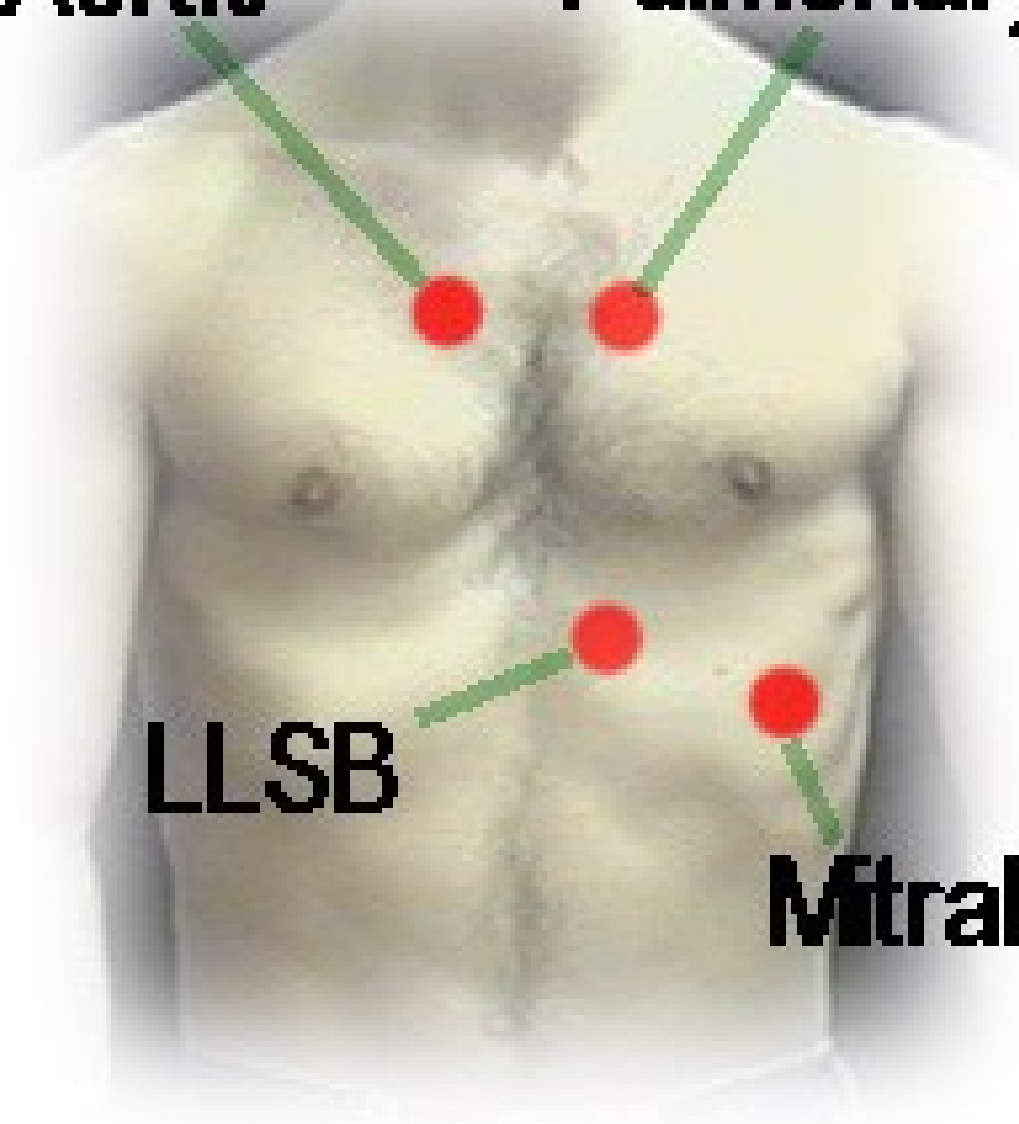


Aortic

Pulmonary

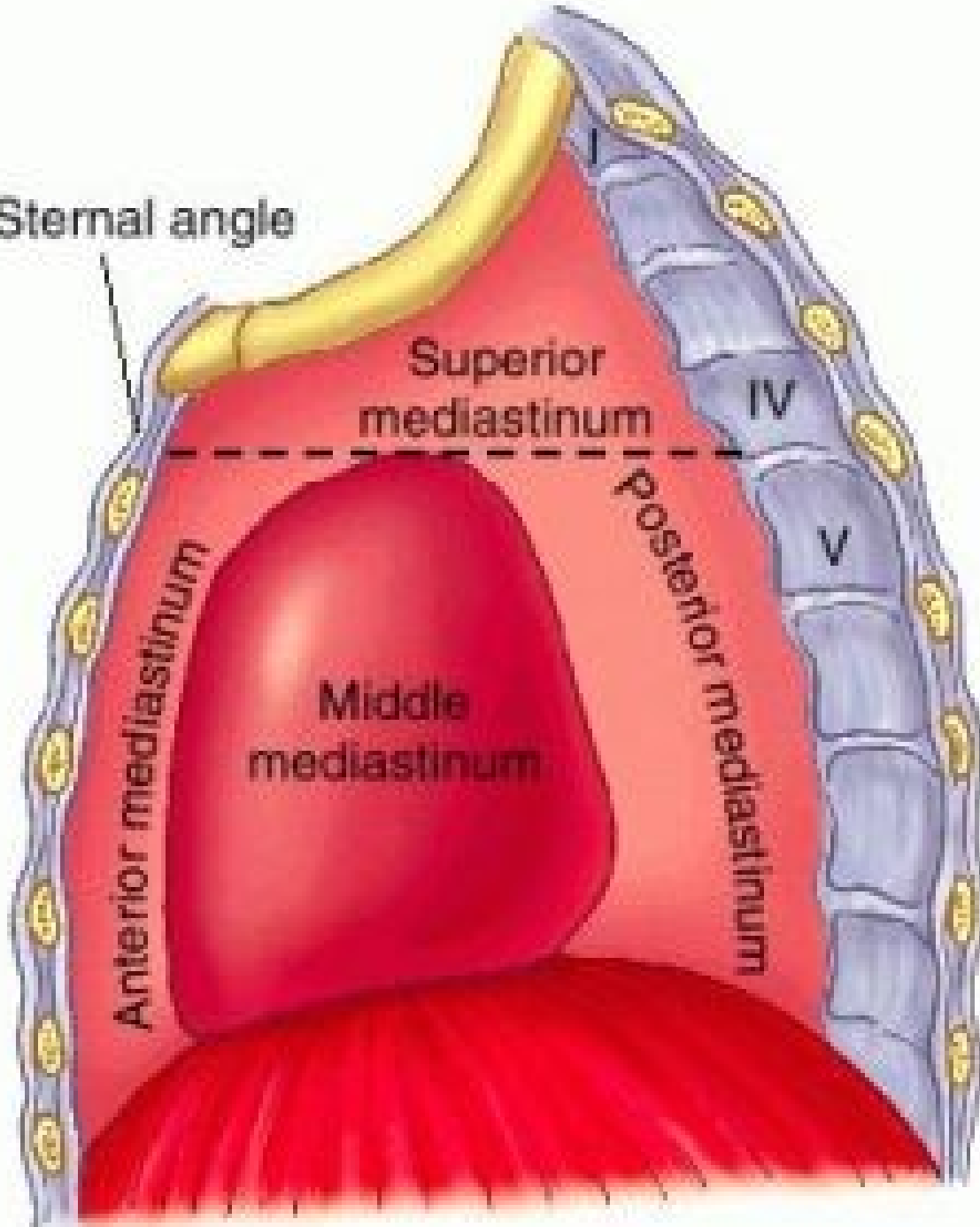
LLSB

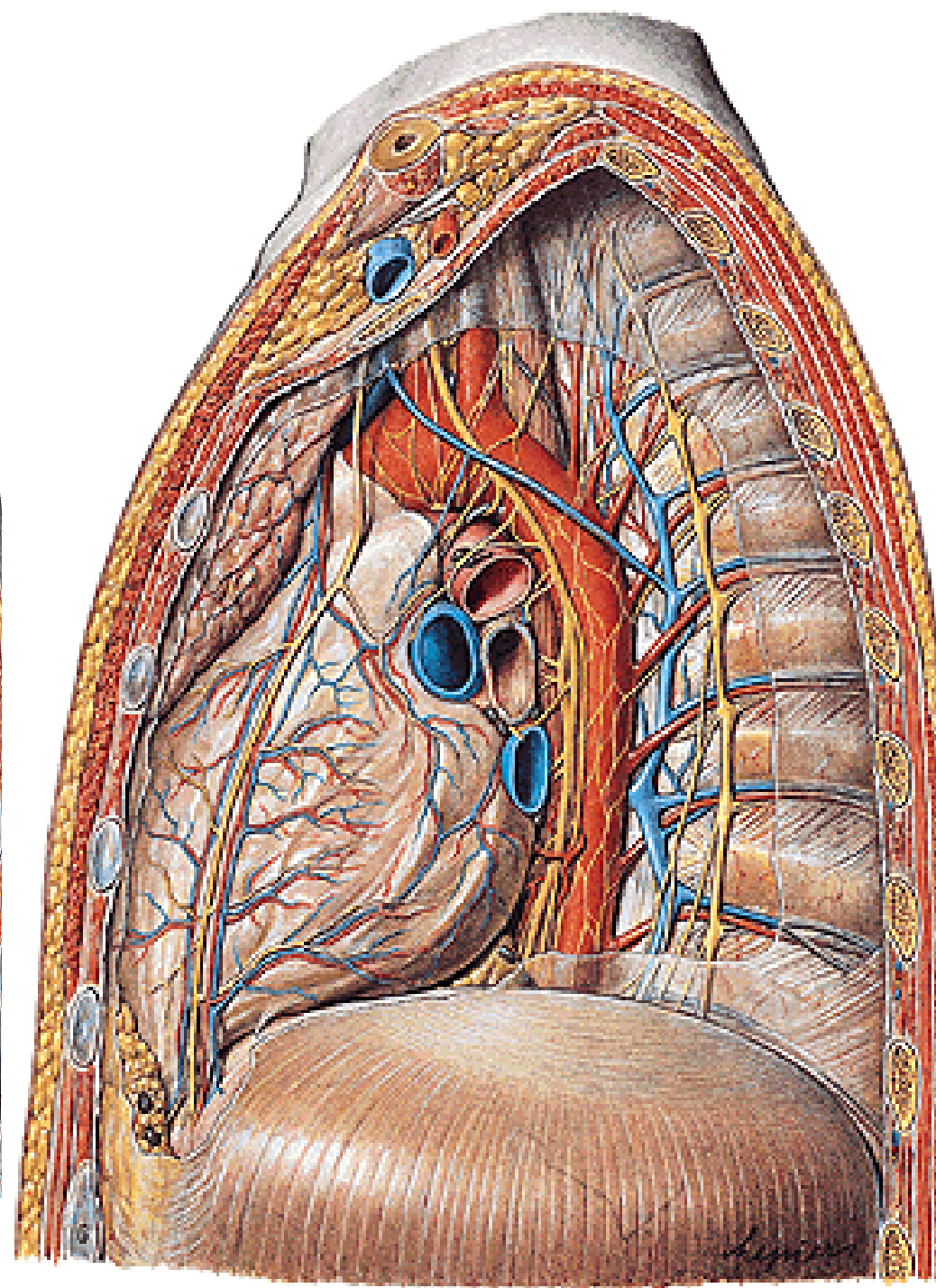
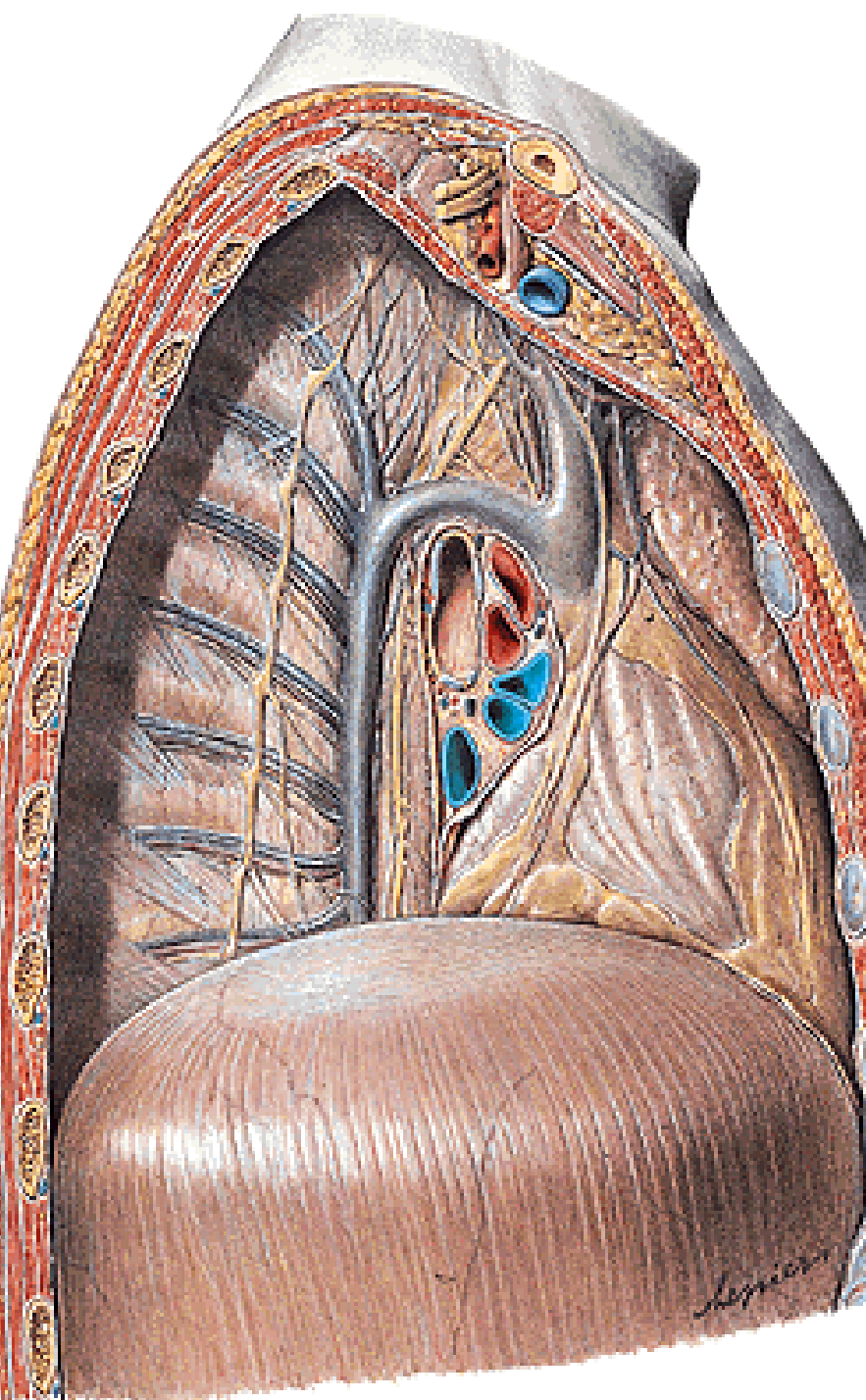
Mitral

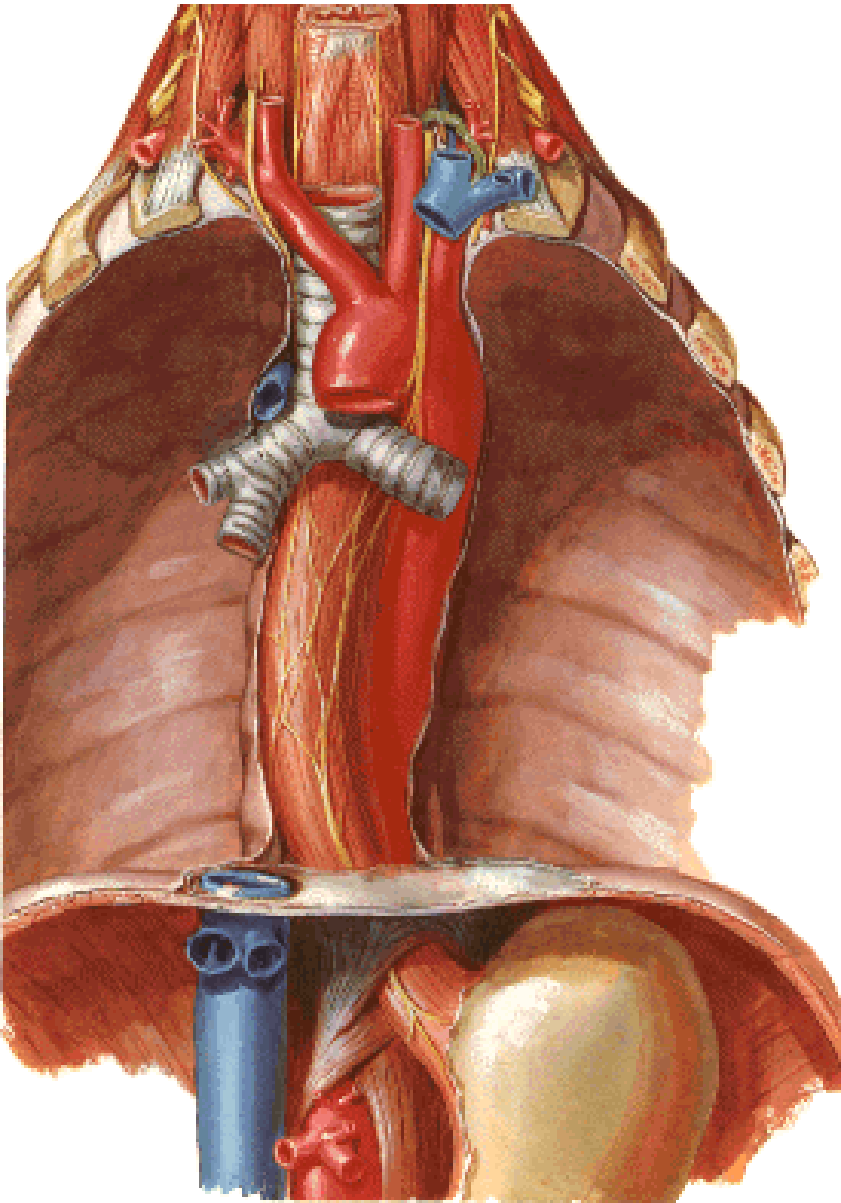


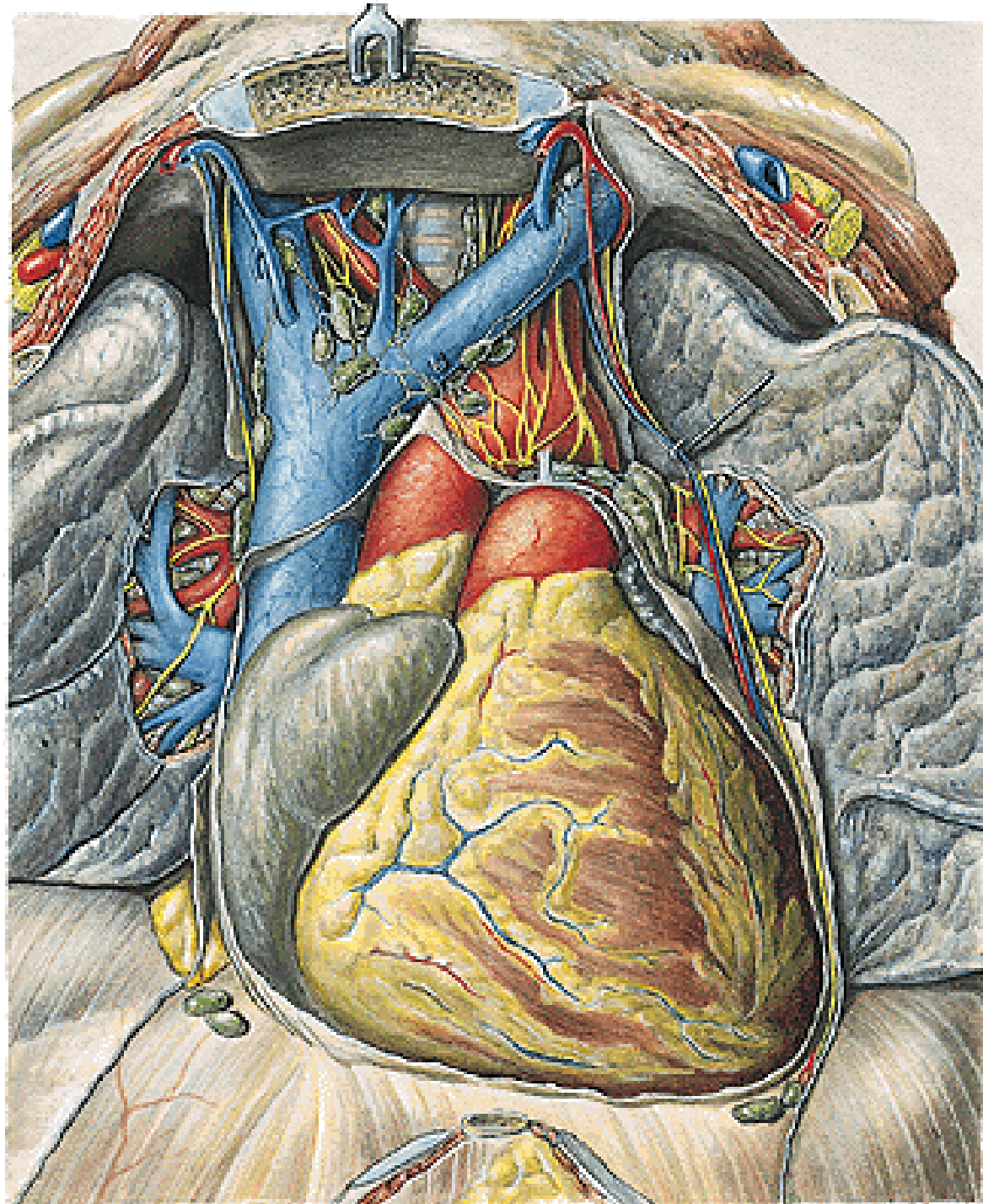
MEDIASTINUM

Sternal angle









**Illustrations were copied from:
Atlas der Anatomie des Menschen/Sobotta.
Putz,R., und Pabst,R. 20. Auflage. München:
Urban & Schwarzenberg, 1993**