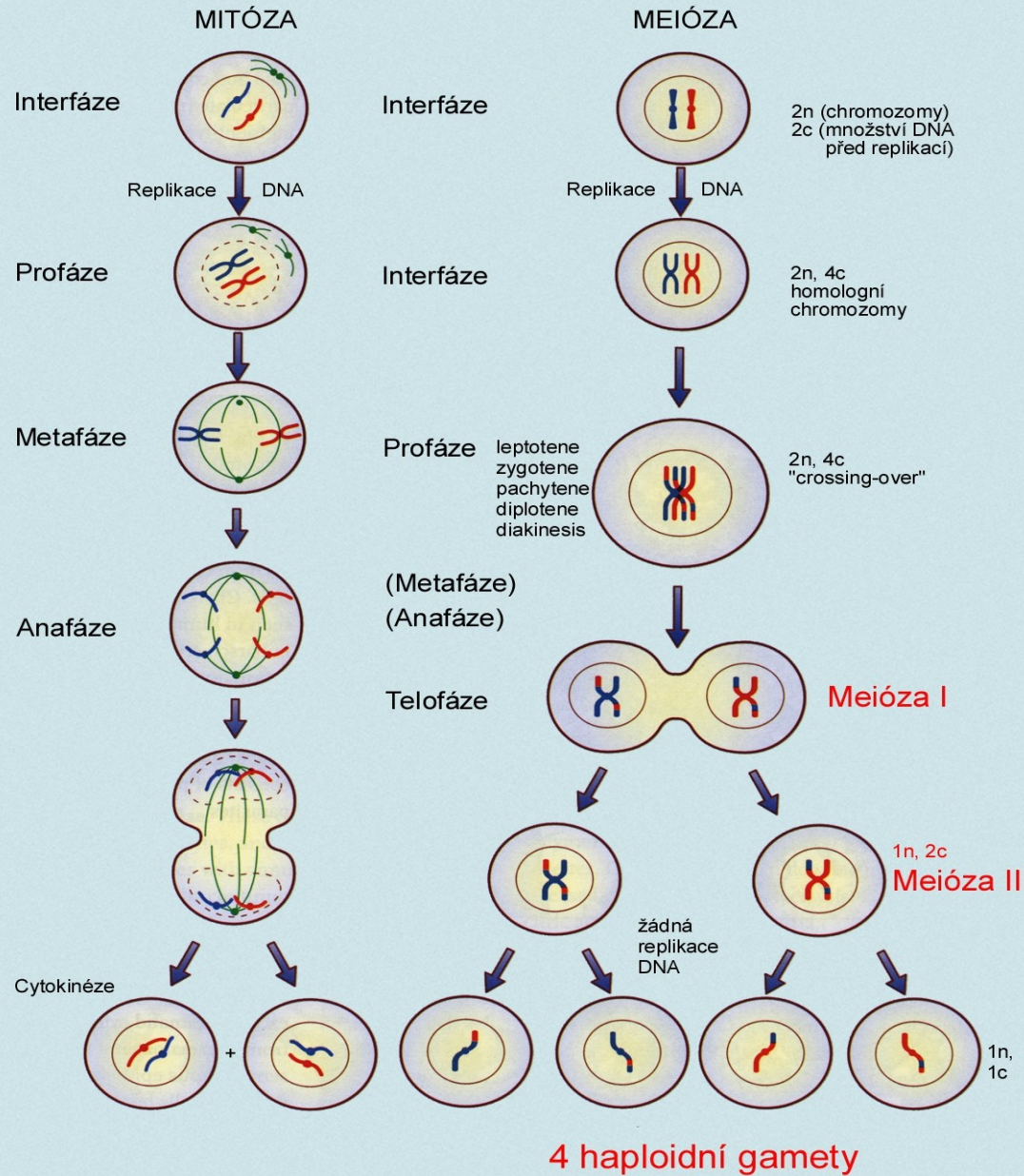




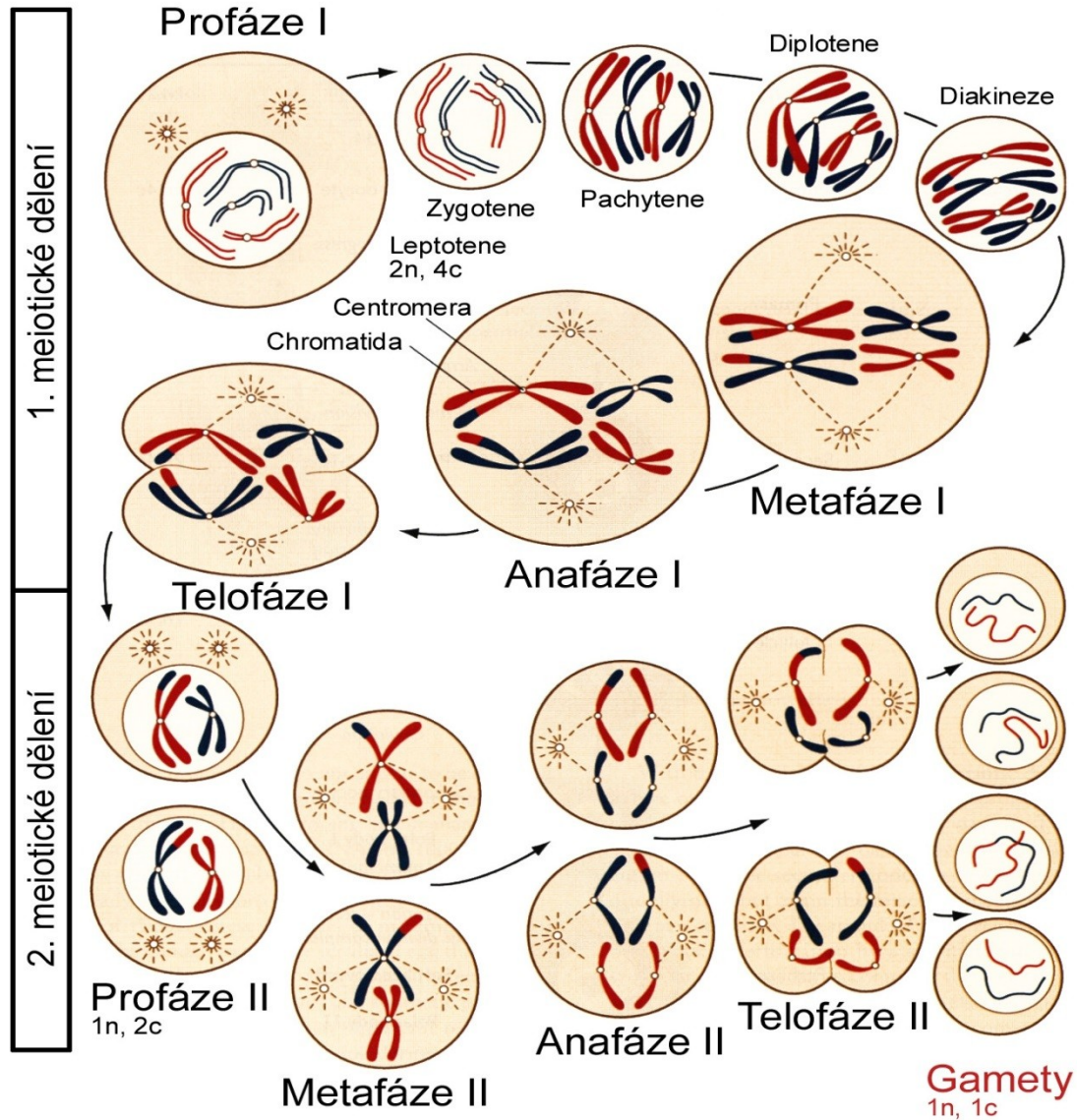
GENERAL EMBRYOLOGY 1

- Meiosis. Development of gamets (spermatogenesis and oogenesis). Fertilization. Cleavage.
- Implantation. Changes in blastocyst during implantation.
- Differentiation of embryoblast.
- Germ disc. Development and differentiation of intraembryonic mesoderm, notochord. Development of somites. The other axial organs of embryo.
- Flexion of embryo. Development of the umbilical cord.

POROVNÁNÍ MITÓZY A MEIÓZY



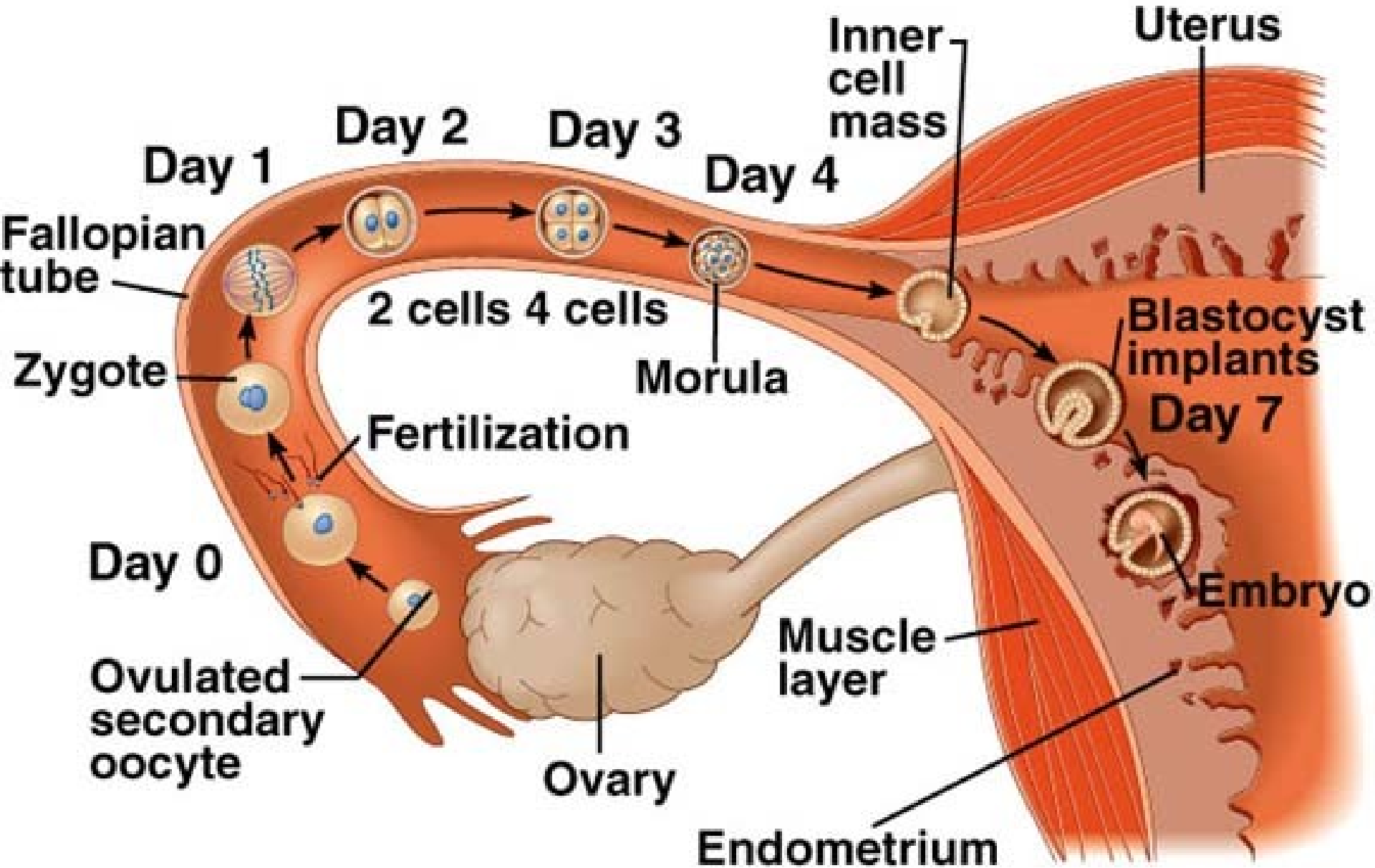
MEIÓZA



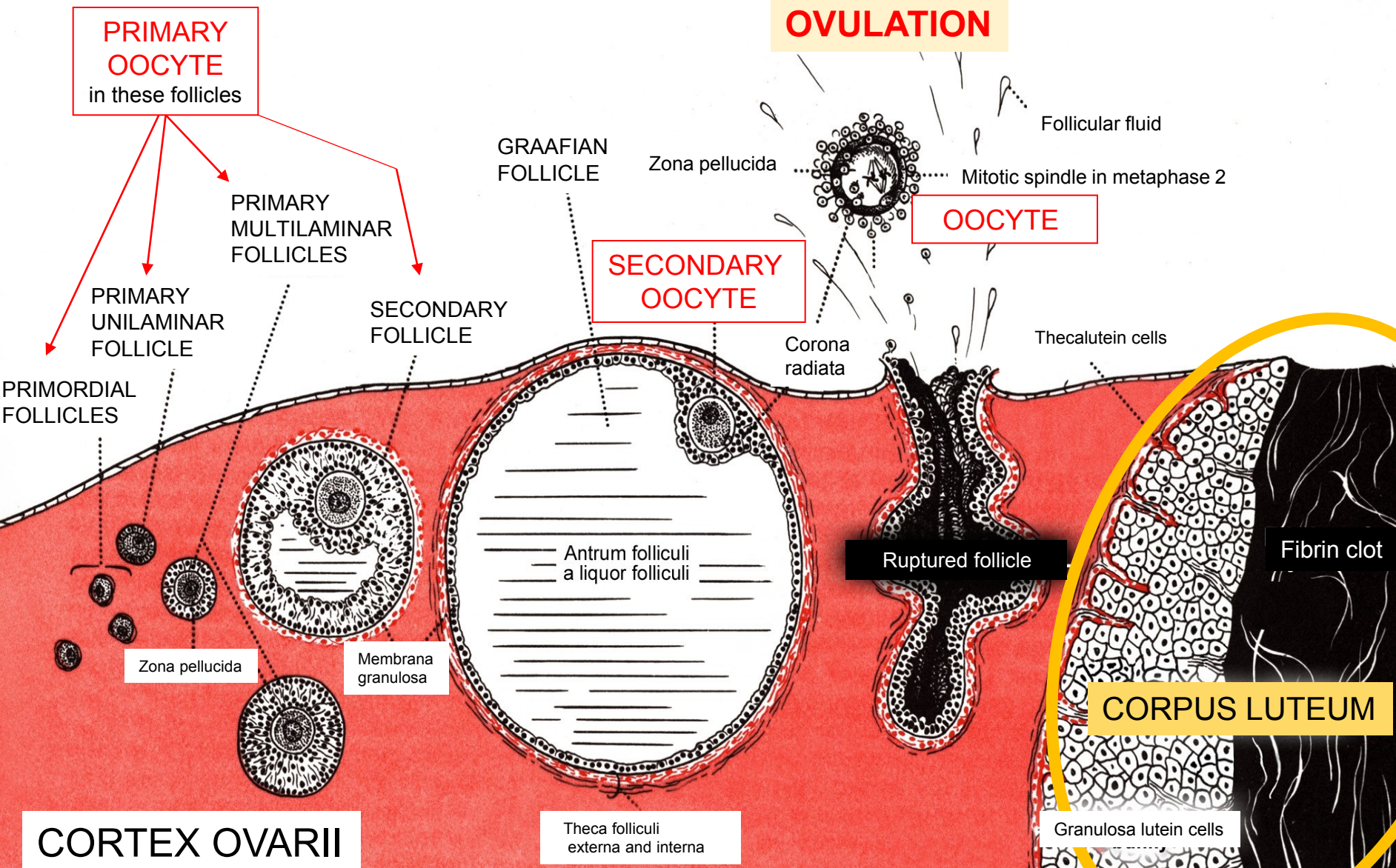
n = haploidní počet chromosomů

c = množství DNA před replikací

From ovulation to implantation



GROWTH AND MATURATION OF OVARIAN FOLLICLES



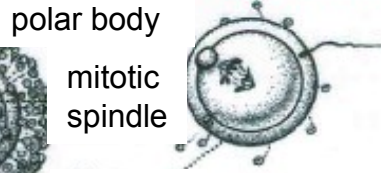
FERTILIZATION AND IMPLANTATION

oocyte II



cumulus oophorus

sperm penetration



zona pellucida

ovum



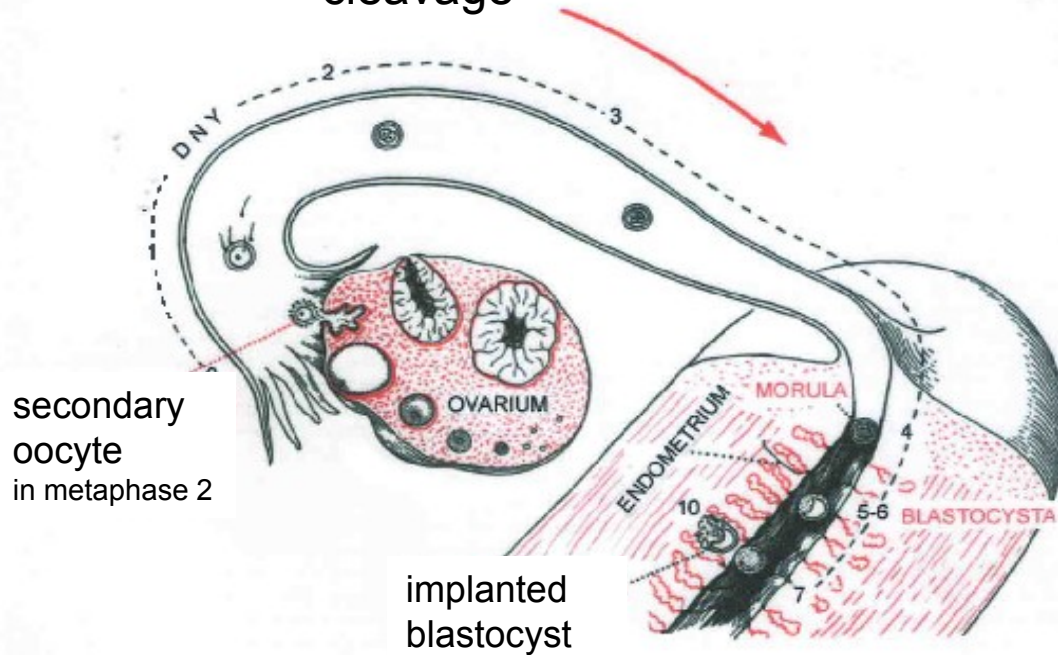
pronuclei

beginning of cleavage



diploid set of chromosomes

cleavage



FERTILIZATION

Zygote

– 18 h after fertilization



24 h



45 h



72 h

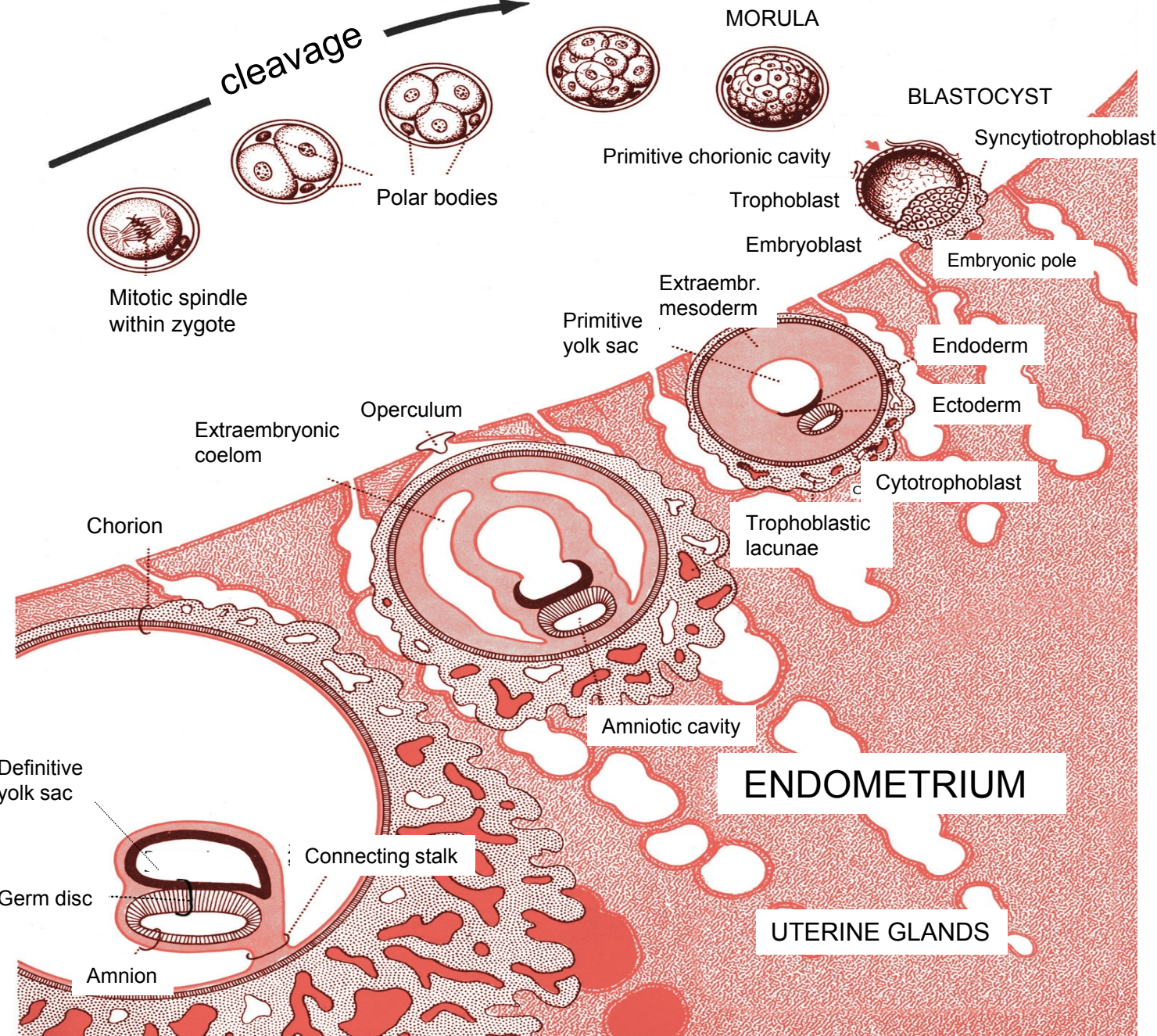


Morula – 96 h

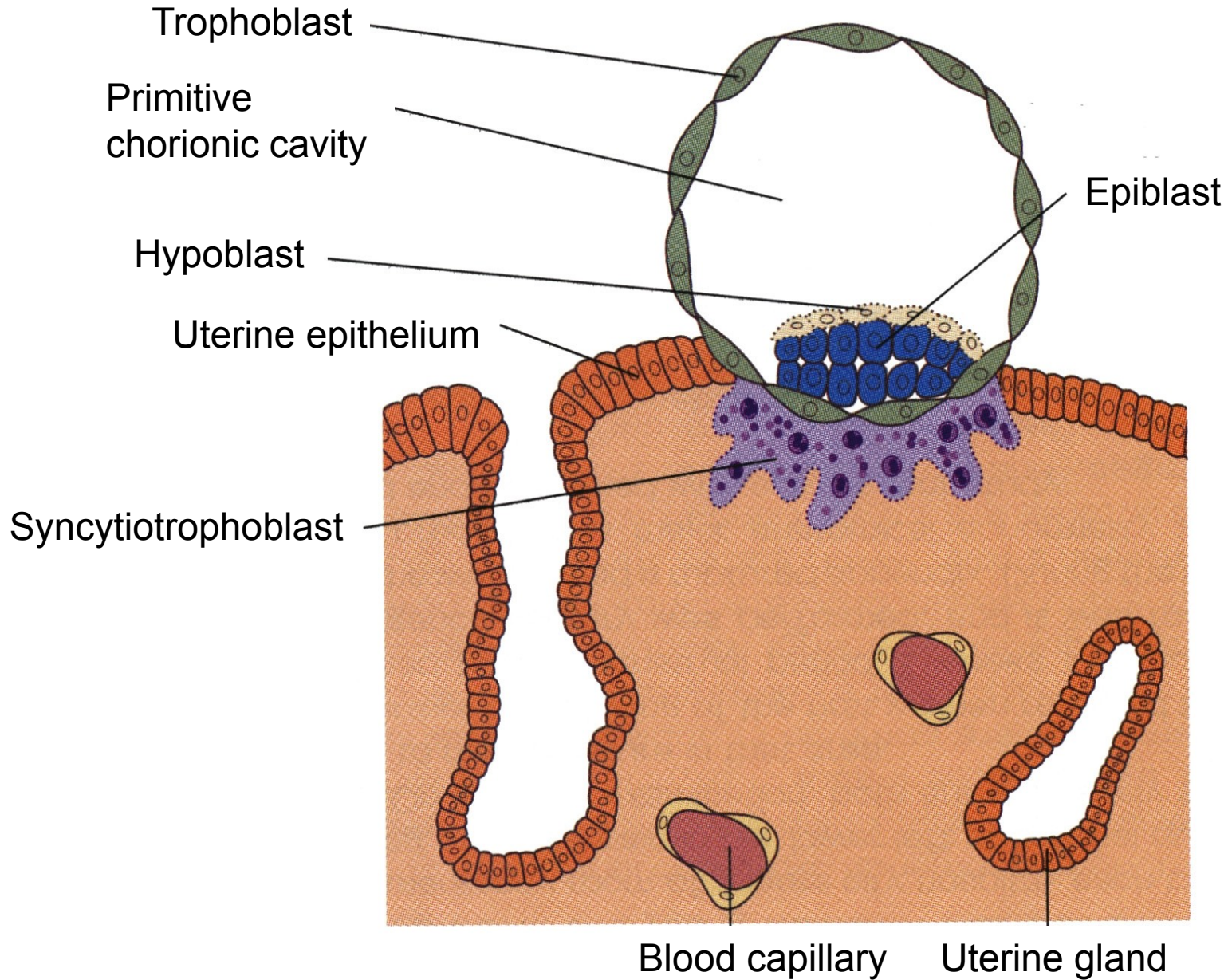


Blastocyst

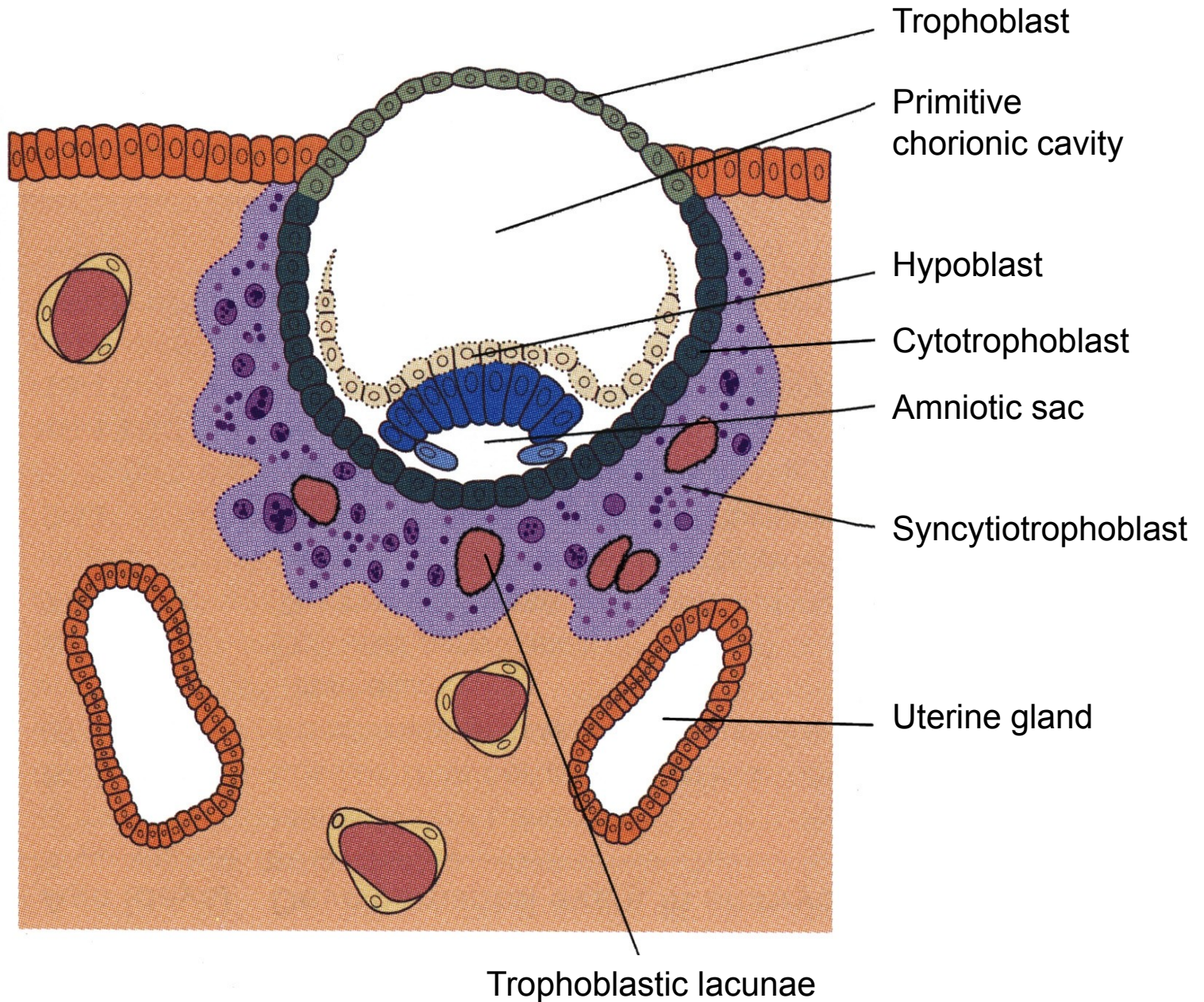
CLEAVAGE AND IMPLANTATION



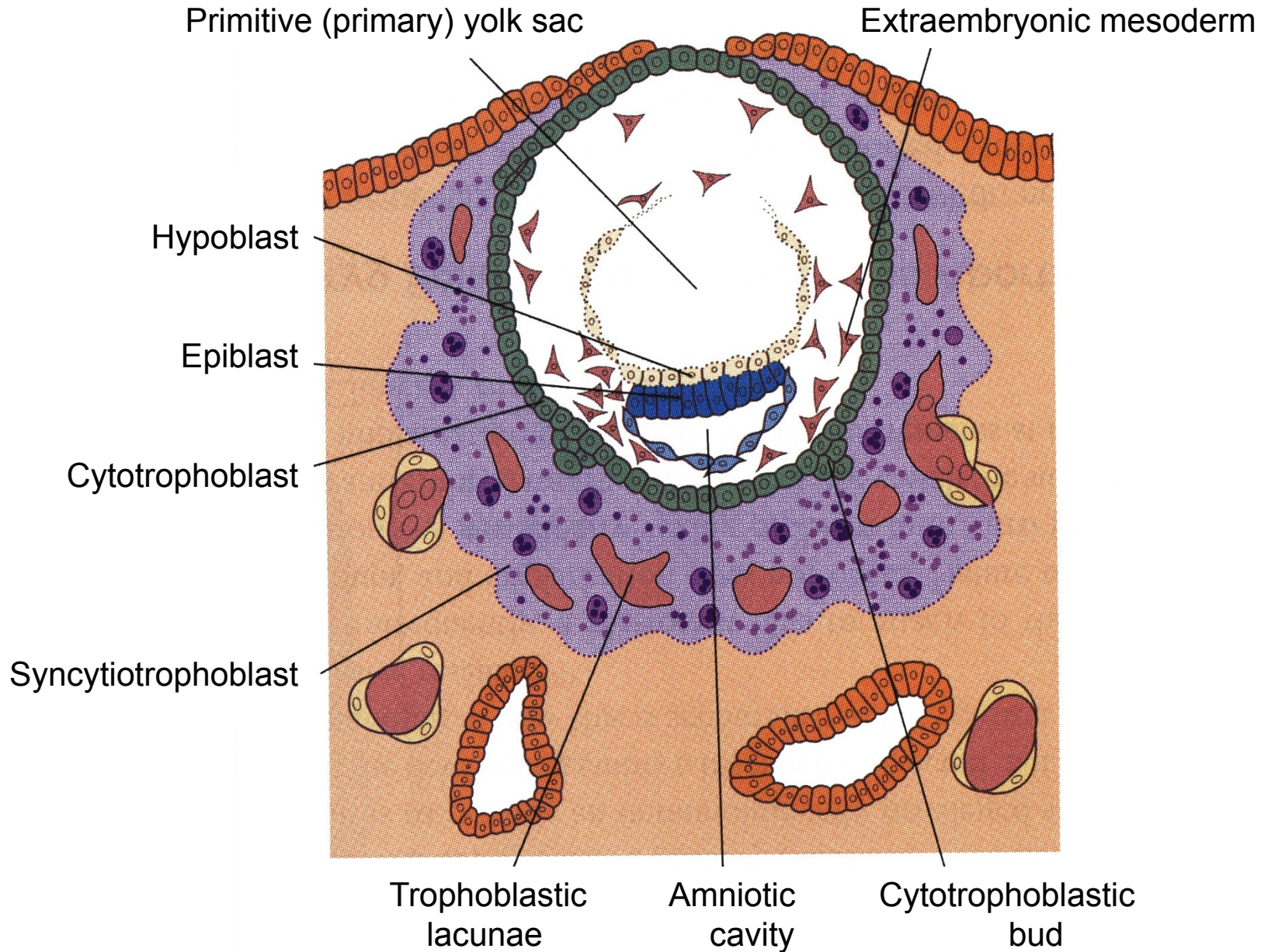
IMPLANTATION – DAY 7



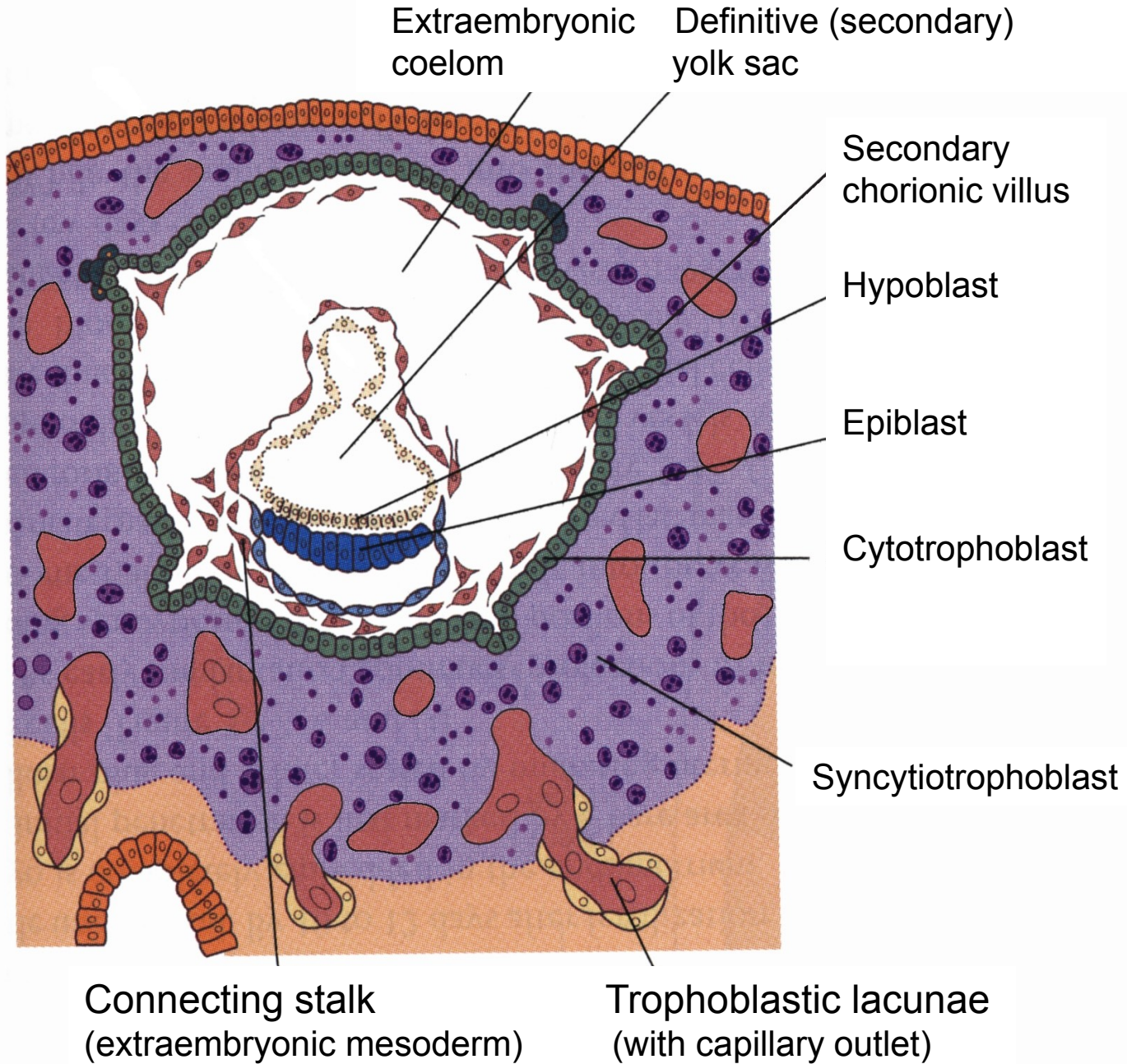
IMPLANTATION – DAY 8 1/2



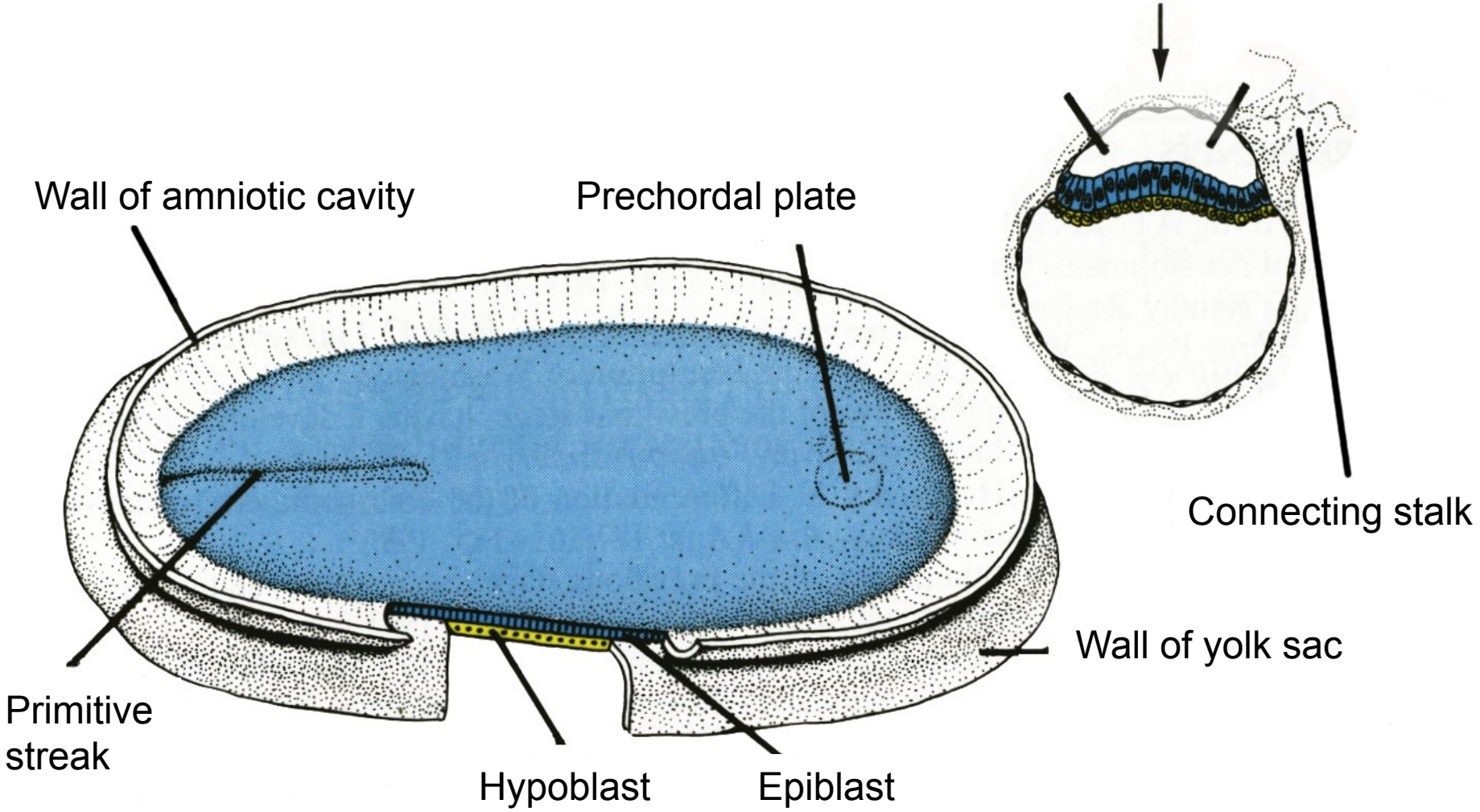
IMPLANTATION – DAY 10



IMPLANTATION – DAY 13

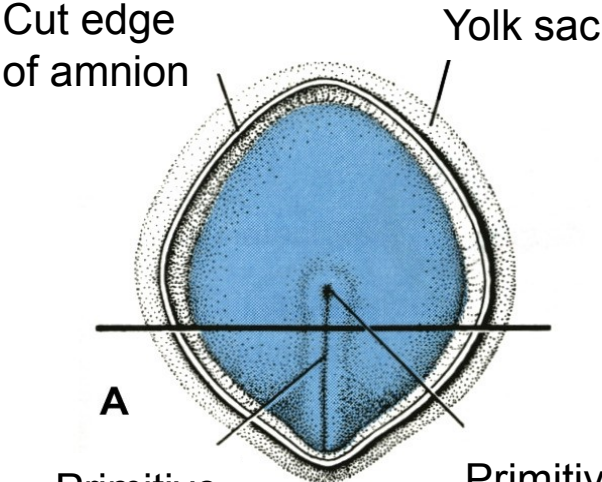


DORSAL SIDE OF GERM DISC – DAY 14

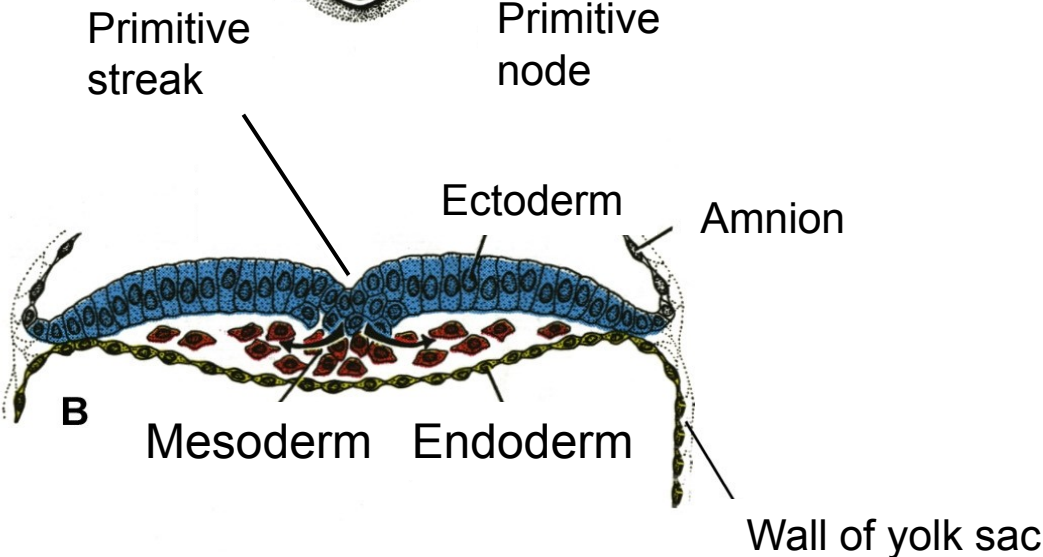


GERM DISC - DAY 16

A – view on dorsal side:



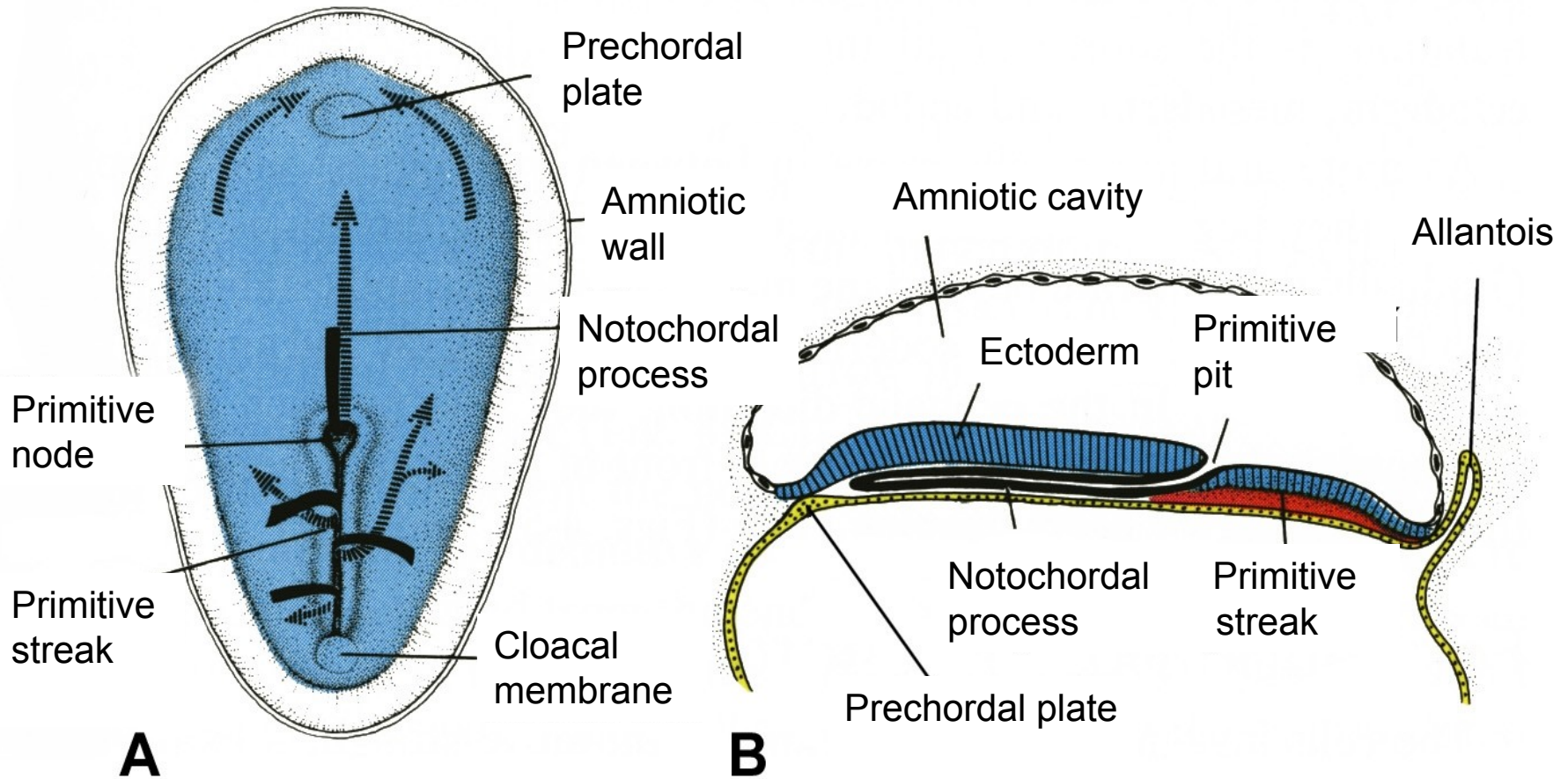
B – transverse section through germ disc:



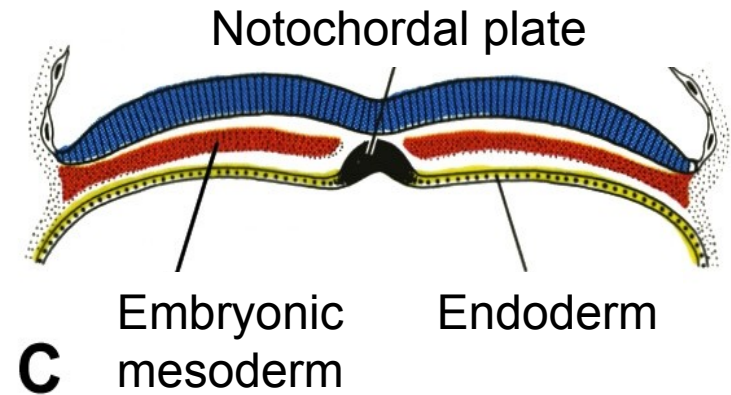
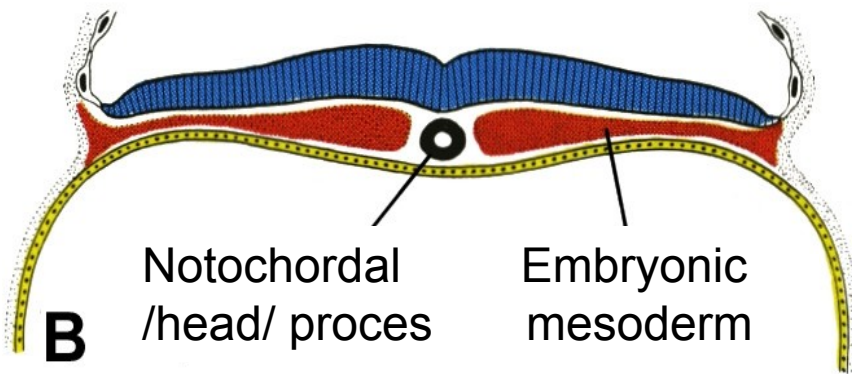
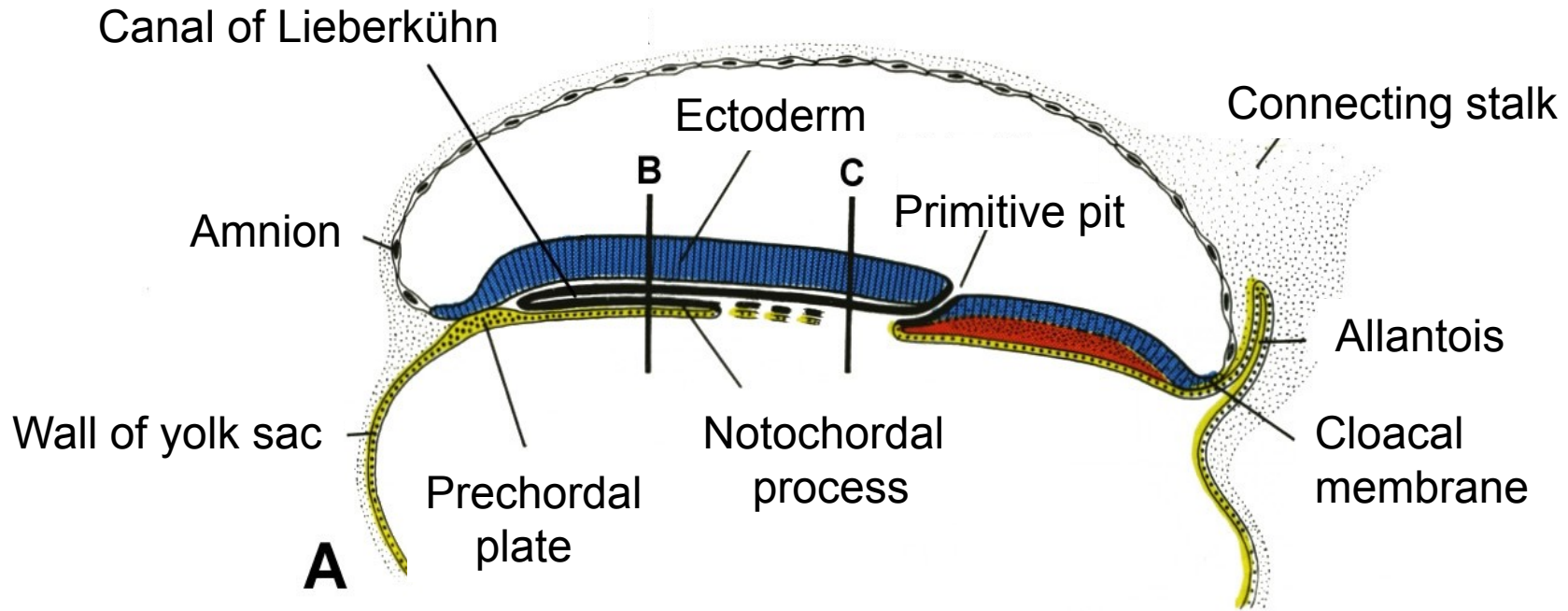
GERM DISC - DAY 16

A – view on dorsal side

B – longitudinal section

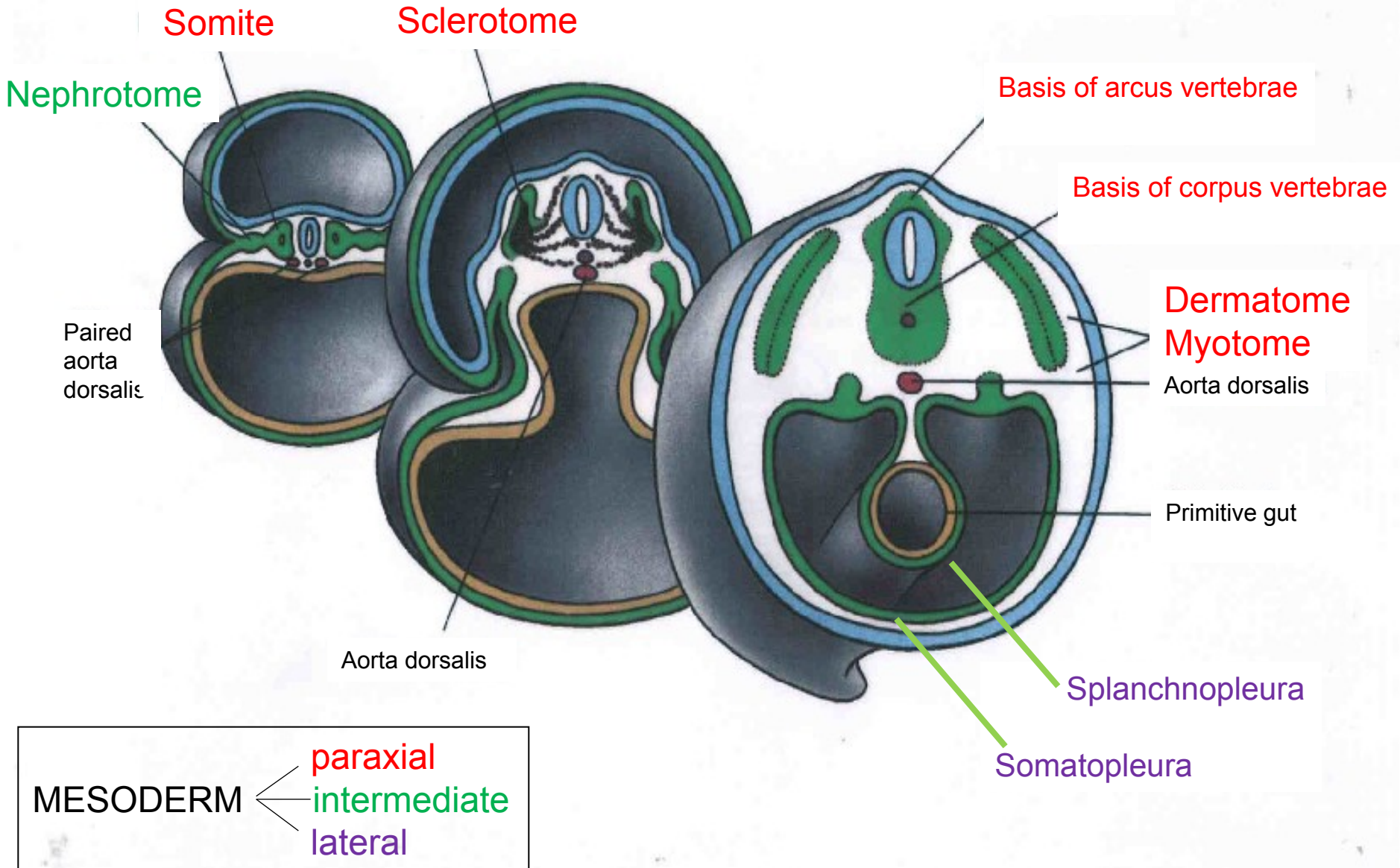


GERM DISC - DAY 17

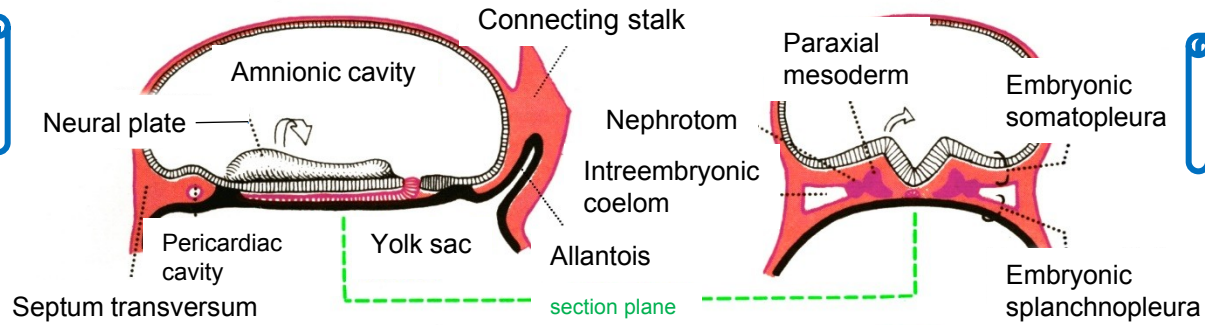


A – longitudinal section, **B**, **C** – transversal sections

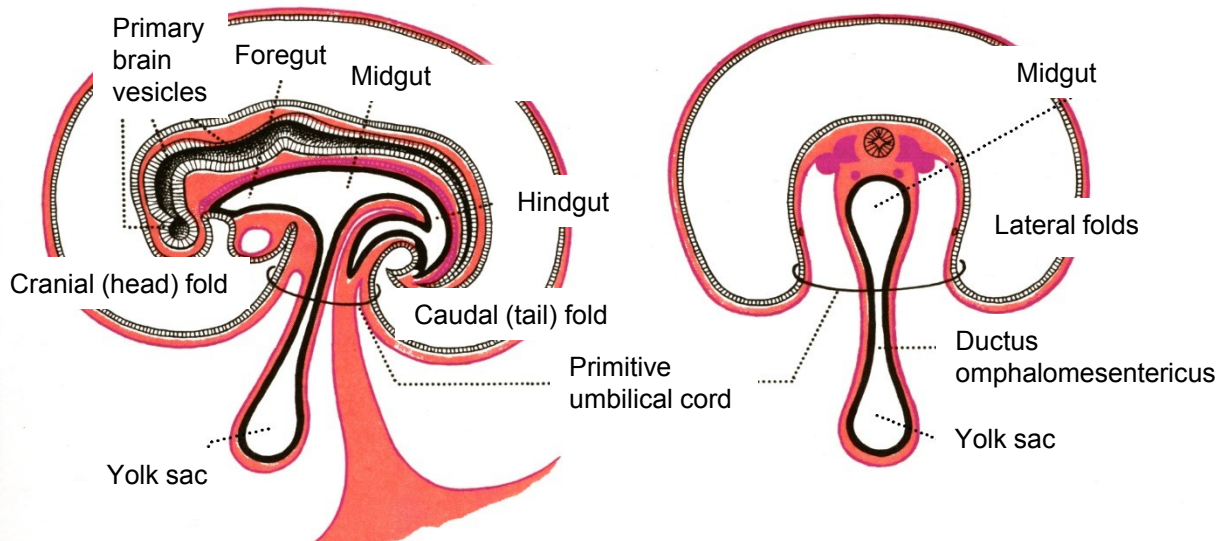
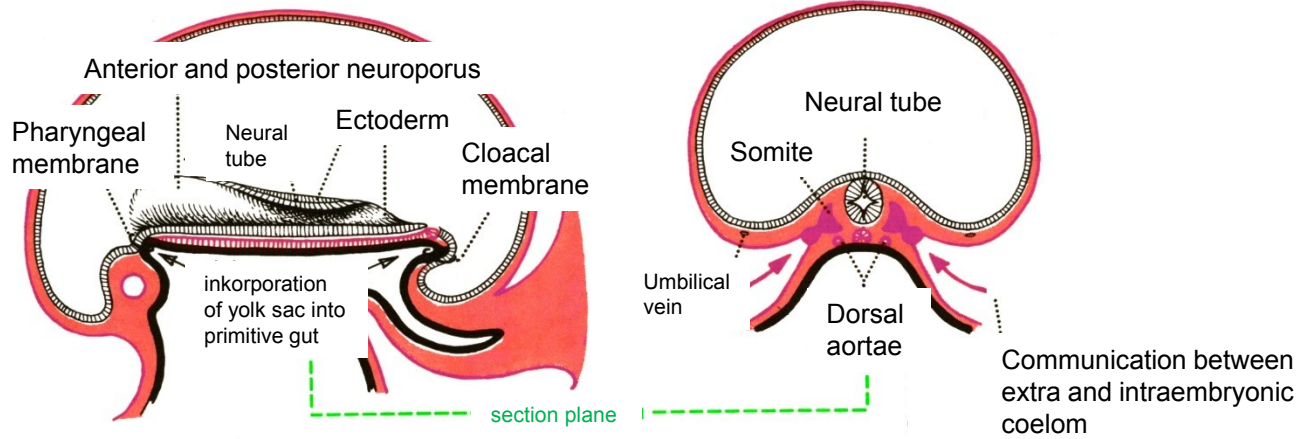
DIFFERENTIATION OF MESODERM



EMBRYO



FLEXION





EMBRYOLOGY

Set of embryological pictures I, II