



PREFIXES + SUFFIXES



DERIVE ADJECTIVE USE *-ARIS, E* OR *-ALIS, E*

ACROMION

OS (mouth)

OCCIPUT

DIGITUS

MAXILLA

STERNUM

DENS

CAPUT

INTESTINUM

CELLULA

FEMUR

PATELLA

TIBIA

FIBULA

PALMA

CAPUT

SCAPULA

CLAVICULA

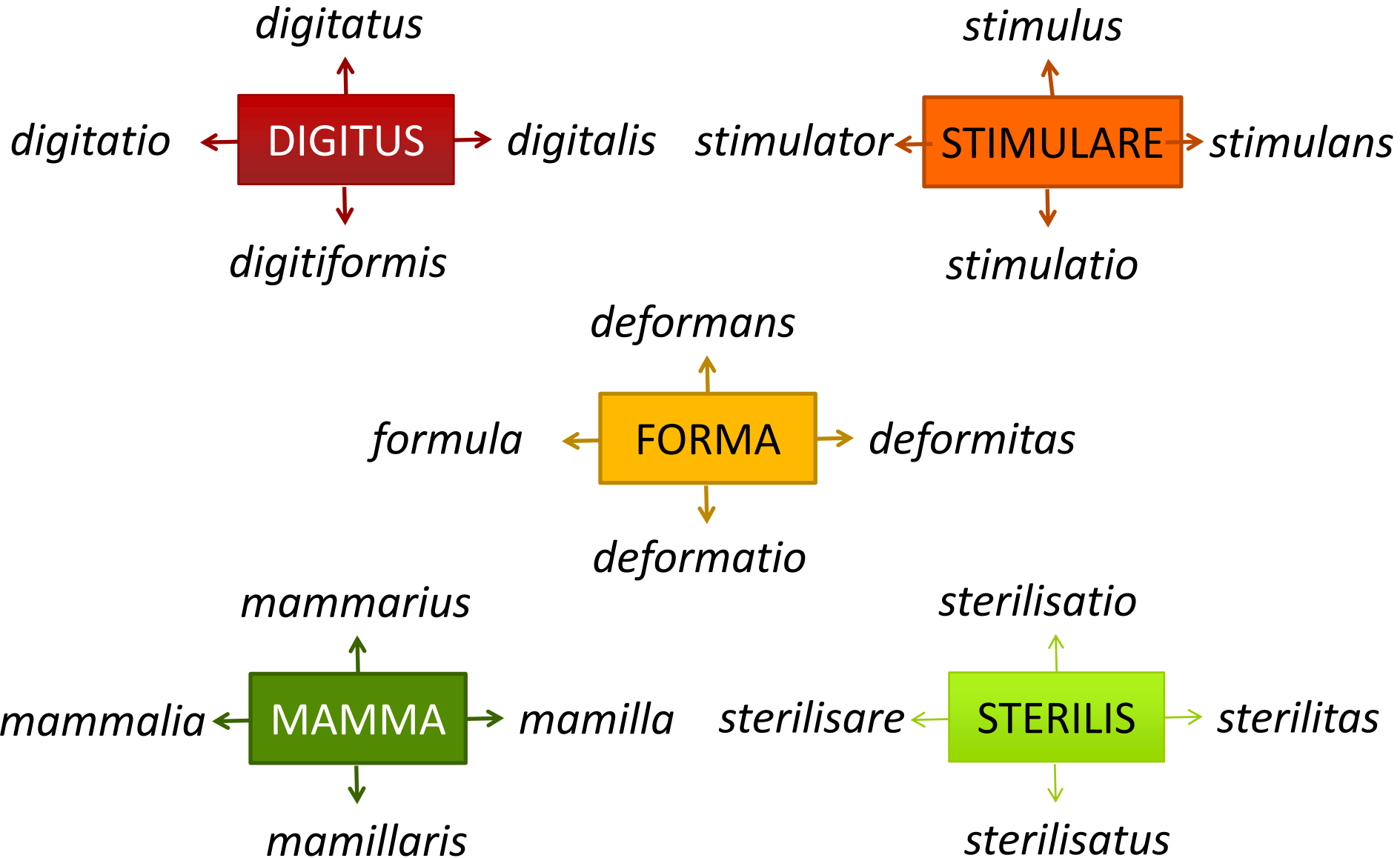
TRACHEA

DUODENUM

MANUS

DORSUM

EXPLAIN THE MEANING OF WORDS DERIVES BY PREFIXES AND SUFFIXES



IDENTIFY THE SUFFIX, EXPLAIN ITS MEANING



strictura

caudatus

circulatio

aciditas

lacteus

hepaticus

foramen

lobulus

ligamentum

latitudo

adductor

obesitas

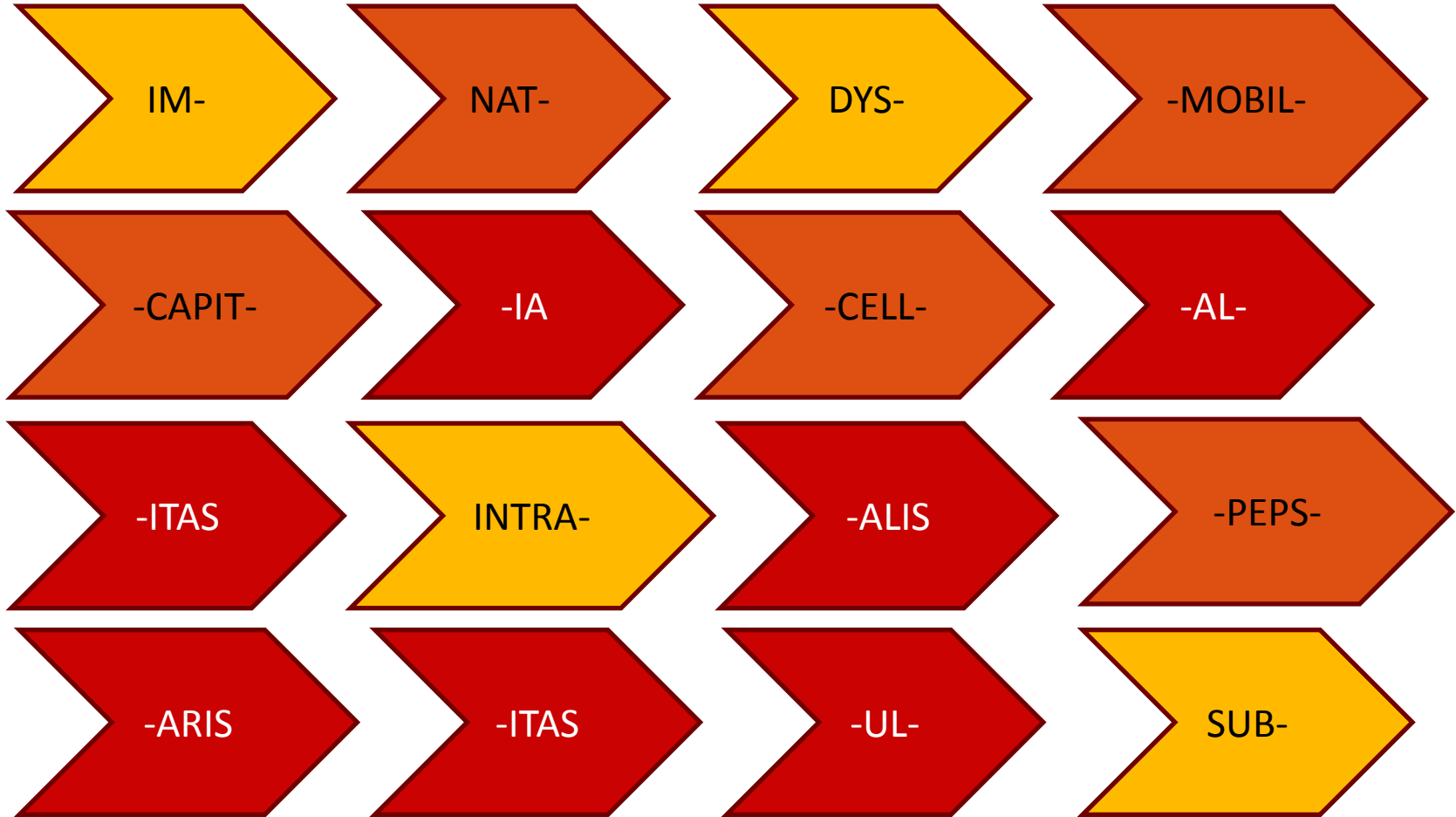
cerebellum

tuberculum

arteriola

ventralis

FORM FIVE TERMS BY COMBINING THE FOLLOWING PREFIXES/ROOTS/SUFFIXES:



1: LABEL FOLLOWING STRUCTURES/ORGANS IN LATIN

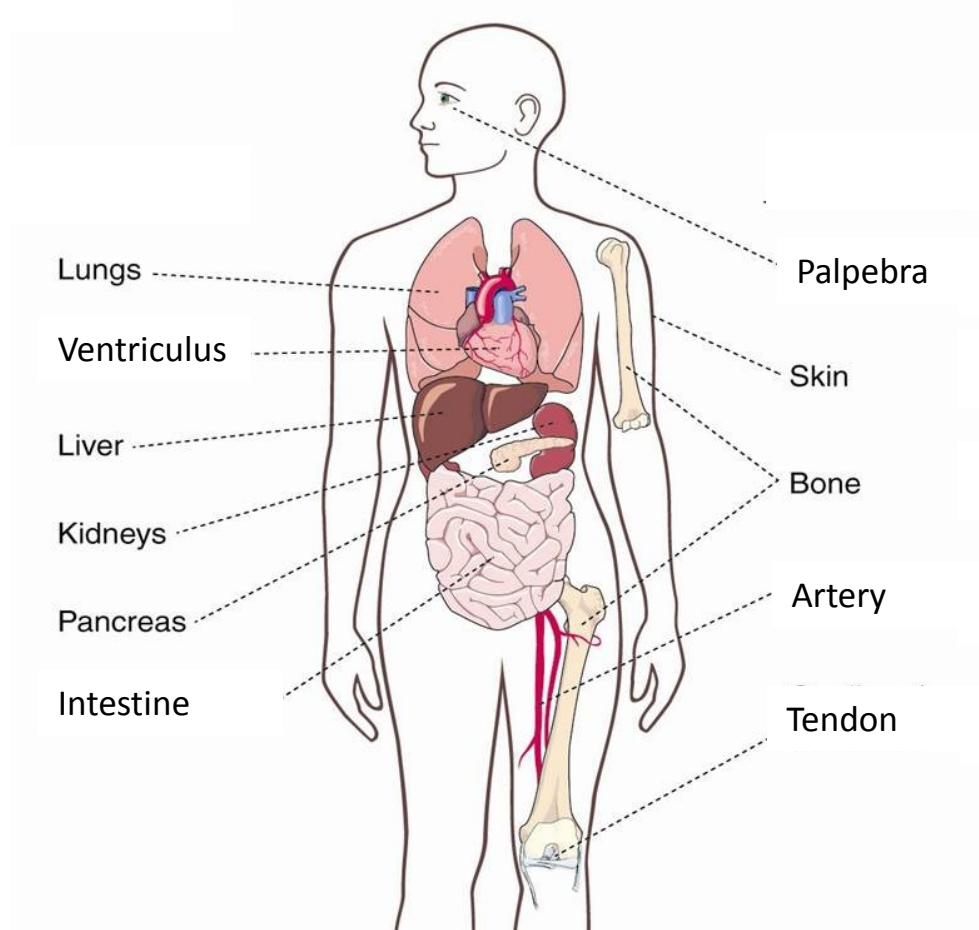
2: DERIVE ADJECTIVES USING THE FOLLOWING ENDINGS:

a) -eus, a, um (3x)

b) -aris, e (1x)

c) -icus, a, um (2x)

d) -alis, e (5x)



1: LABEL FOLLOWING STRUCTURES/ORGANS IN LATIN

2: DERIVE ADJECTIVES USING THE FOLLOWING ENDINGS:

a) -eus, a, um (3x)

b) -aris, e (1x)

c) -icus, a, um (2x)

d) -alis, e (5x)

Pulmonalis, e

Ventricularis, e

Hepaticus, a, um

Renalis, e

Pancreaticus, a, um

Intestinalis, e

Lungs

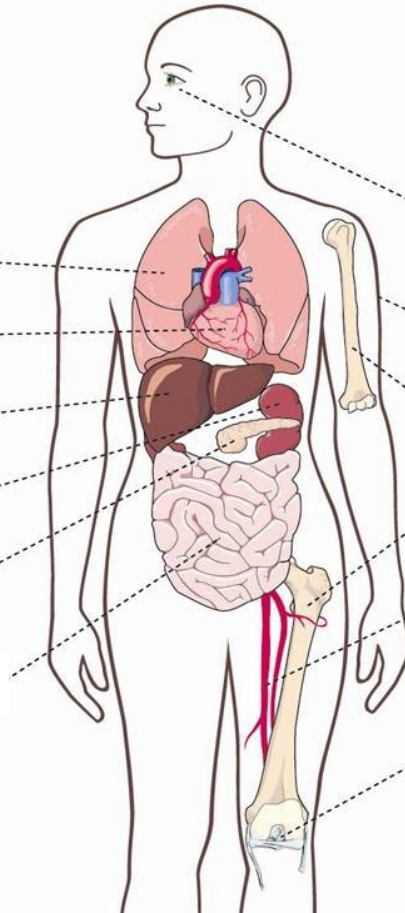
Ventriculus

Liver

Kidneys

Pancreas

Intestine



Palpebra

Skin

Bone

Artery

Tendon

Palpebralis, e

Cutaneus, a, um

Osseus, a, um

Arterialis, e

Tendineus, a, um

TO DESIGNATE DIFFERENT MUSCLES USE PREFIXES AND SUFFIXES:

SUB-

AB-

-ILIS

-OR

-ATUS

-OIDEUS

It is a flat, quadrilateral skeletal muscle located on the posterior side of the hip joint, besides other functions it also acts to stabilize the femoral head in the acetabulum, it is called *musculus* _____

In English this muscle is called slender muscle of the thigh, what should be its name in Latin? *Musculus* _____


A long, heavy triangular muscle of the medial aspect of the thigh which acts to pull a thigh away from the body is: *musculus* _____
magnus

A large triangular muscle that covers the shoulder joint and serves to abduct, flex, extend and rotate the arm is: *musculus* _____

This muscle is of triangular shape and it is placed under the collar bone, it is: *musculus* _____

NAME ANATOMICAL STRUCTURES ON THE BASE OF DEFINITIONS AND/OR IMAGES:

The angle between the right and left costal arch which is measured under the sternum is called *angulus* _____

Small branches of *aorta thoracica* that supply the posterior wall of the pericardium are named *rami* _____ 

Rough bony area between external lip of the iliac crest (*labium externum ossis ilii*) and internal lip of the iliac crest (*labium internum ossis ilii*) is labeled as *linea* _____

The Latin name for ligaments which are lying outside a joint capsule is *ligamenta* _____

The delicate moveable layer of loose connective tissue between the external surface of the sclera and the fascial sheath of the eyeball should be called *lamina* _____

Autonomic nerve plexus around the subclavian artery is labelled as *plexus* _____