

PELVIC FLOOR

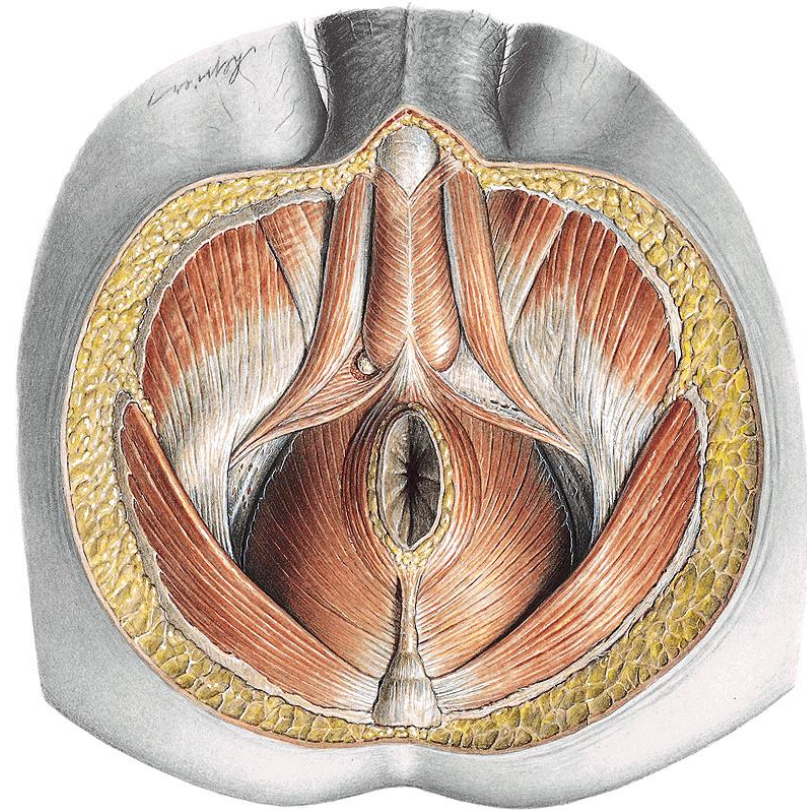
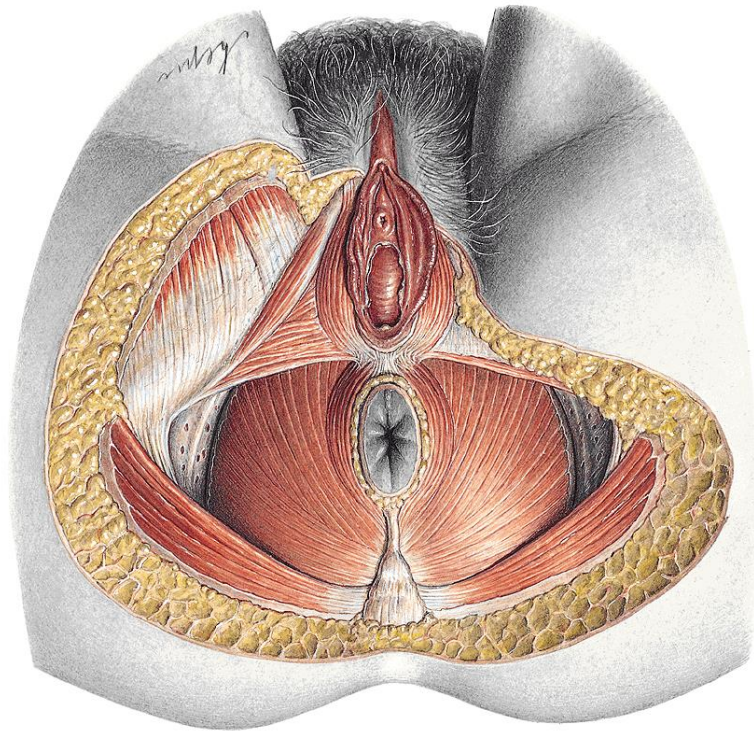
General medicine, aVLANII, spring 2017

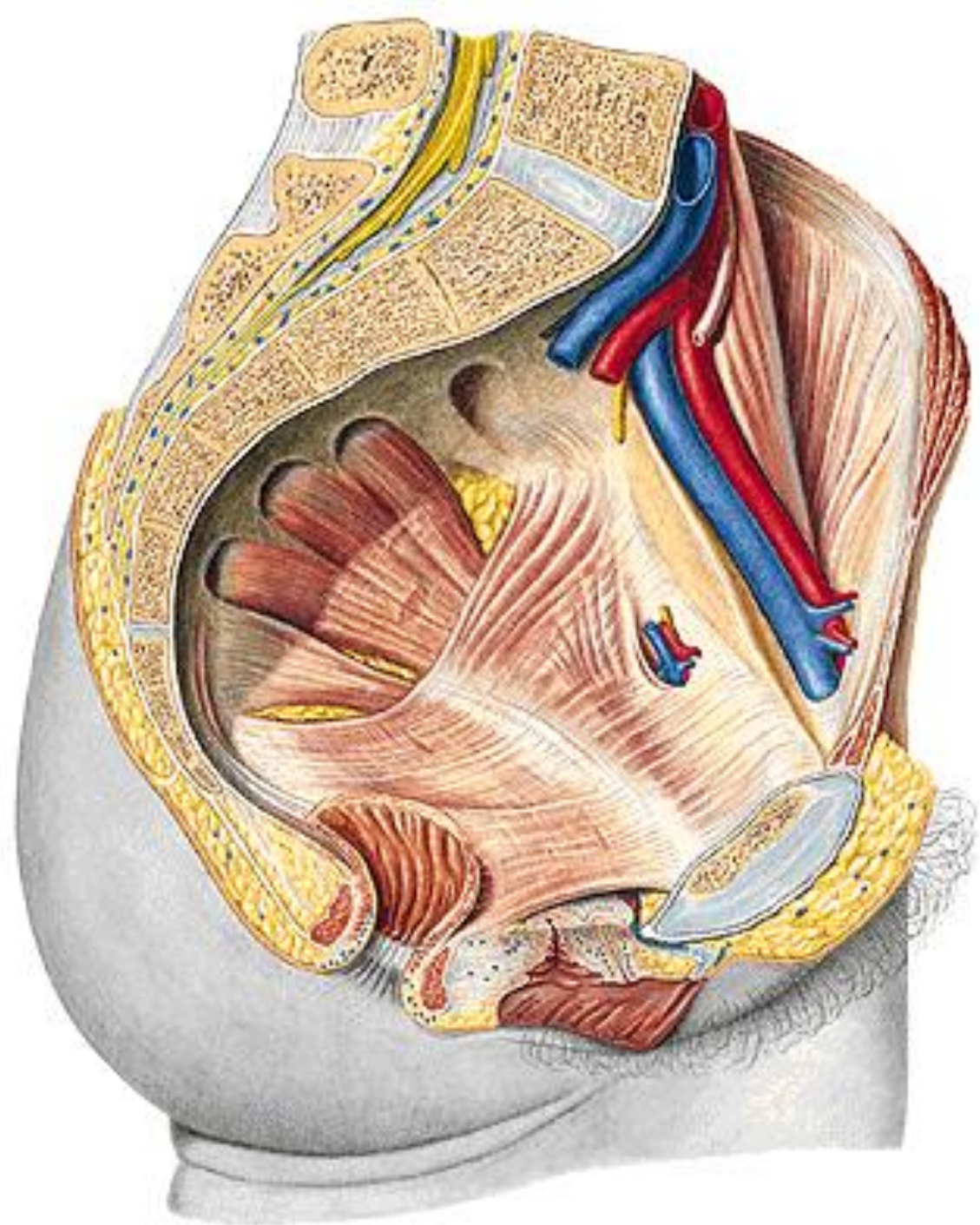


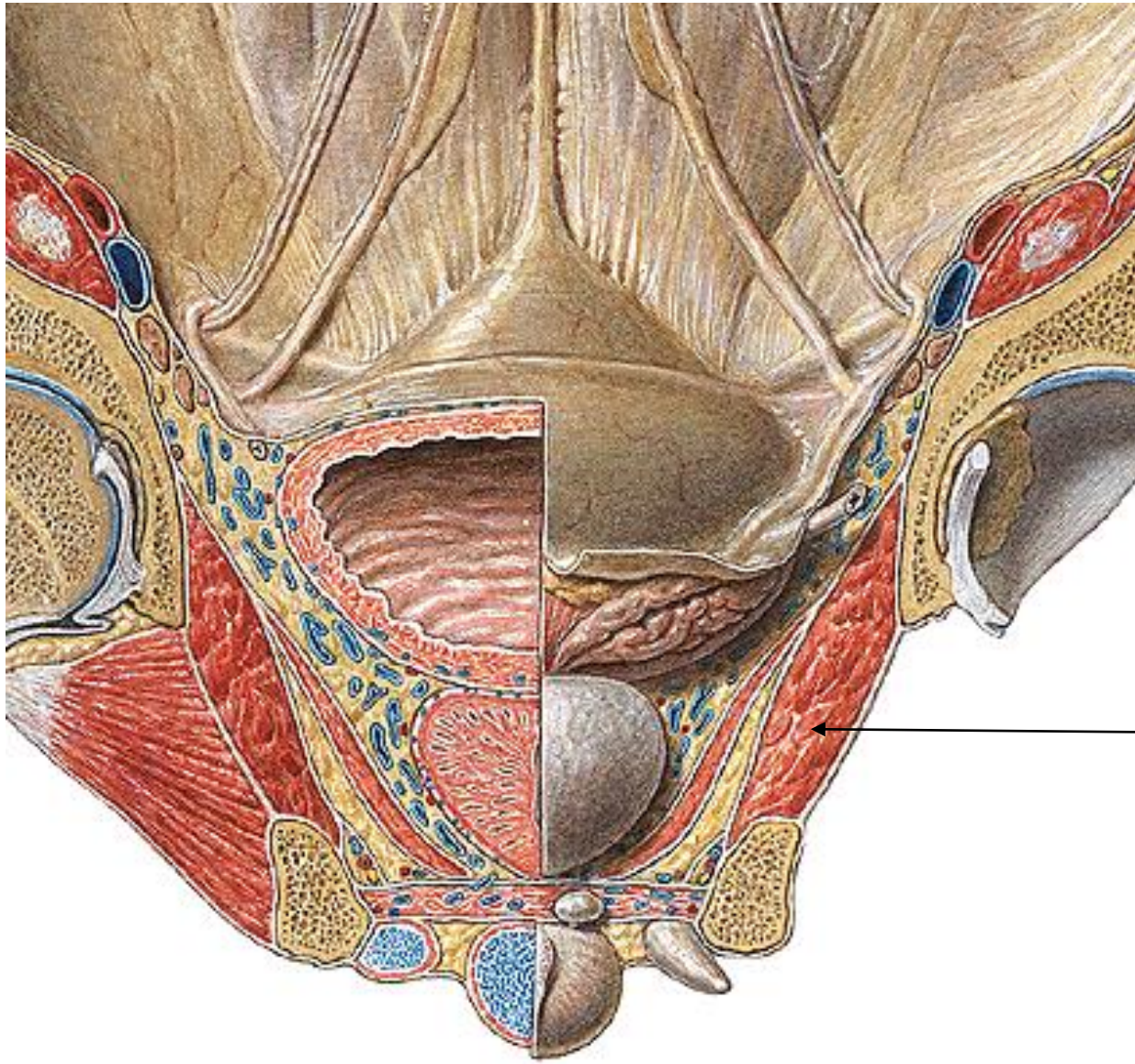
Department of Anatomy
MU Brno, Czech Republic



- **Diaphragma pelvis**
- **Perineal membrane (Deep perineal pouch (diaphragma urogenitale))**
- **Superficial perineal pouch**
- **Ischiorectal fossa**
- **Fascias**



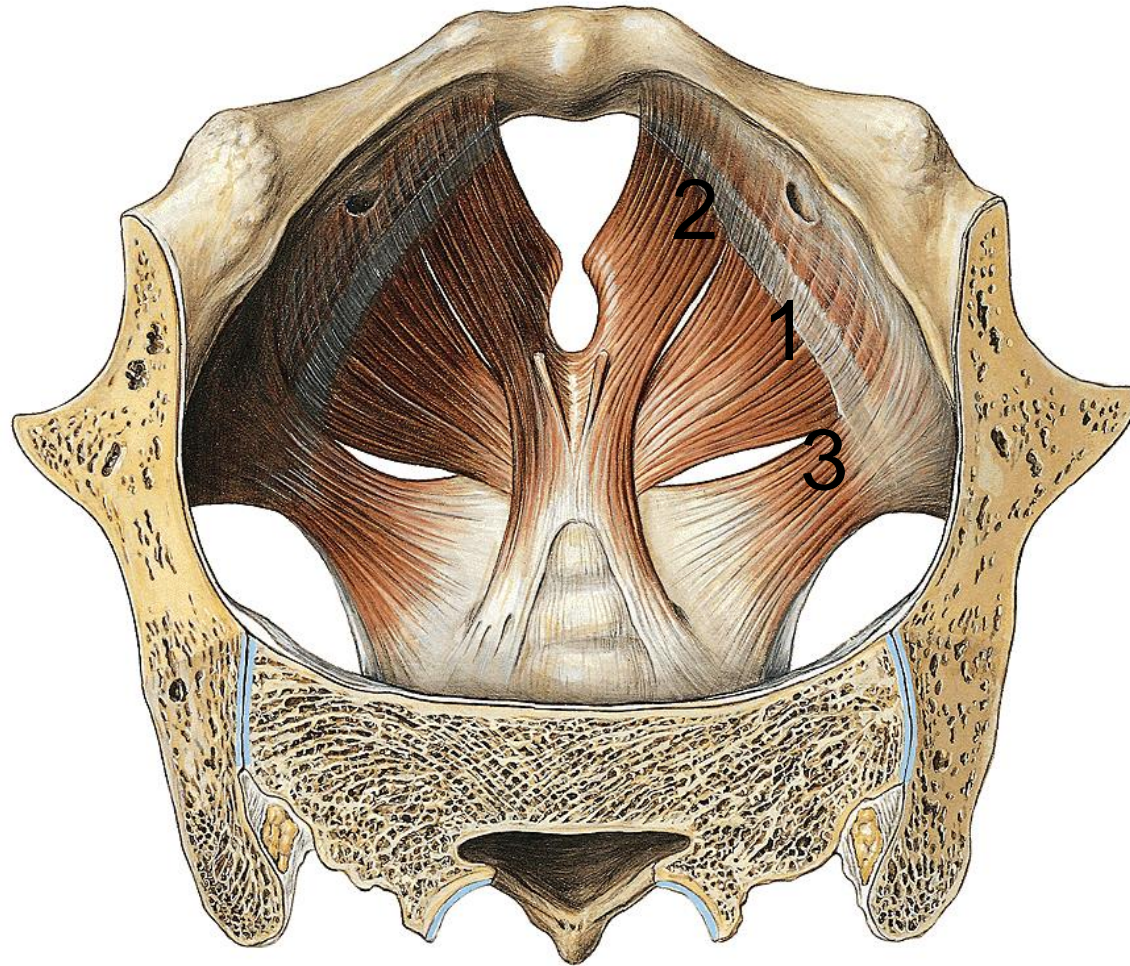




m. obturatorius int.

MUSCLES OF THE PELVIC DIAPHRAGMA

Diaphragma pelvis



M. levator ani

1 pars iliaca

2 pars pubica

Hiatus urogenitalis
opening for rectum

3 M. coccygeus

Fascia diaphragmatis pelvis
sup. et inf.

Innervation: *sacral plexus*

Support the pelvic viscera, assist in the constriction of the rectum and vagina

M. levator ani

1 pars iliaca (iliococcygeus)

O: *arcus tendineus m.levatoris ani*

I: *anococcygeal lig., coccyx*

2 pars pubica (pubococcygeus PC)

O: *ramus sup. ossis pubis*

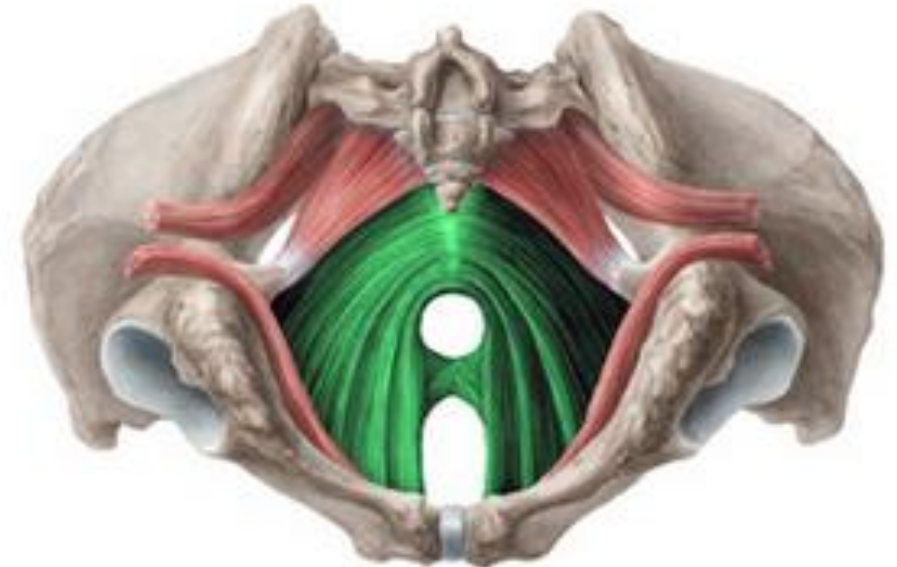
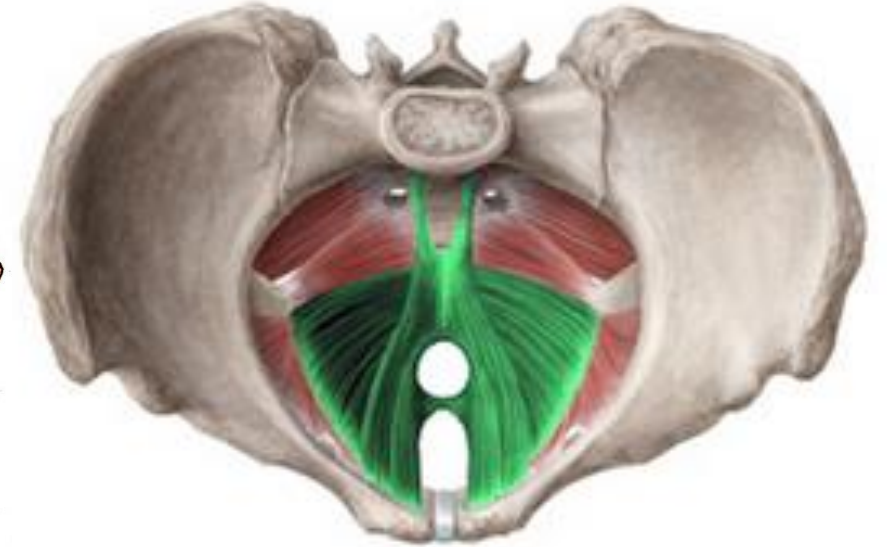
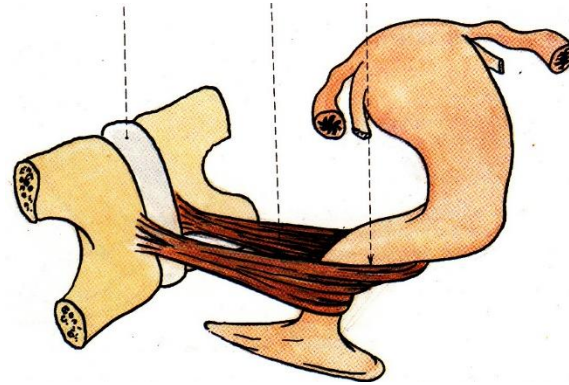
I: *coccyx, ventral sacrococcygeal lig.*

Medial part of PC - **M. levator prostatae, M. pubovaginalis**

PERINEAL BODY – fibromuscular node between A and UG

Intermediate part of PC – **M. puborectalis** – blends with the deep external anal sphincter

Innervation: *sacral plexus*

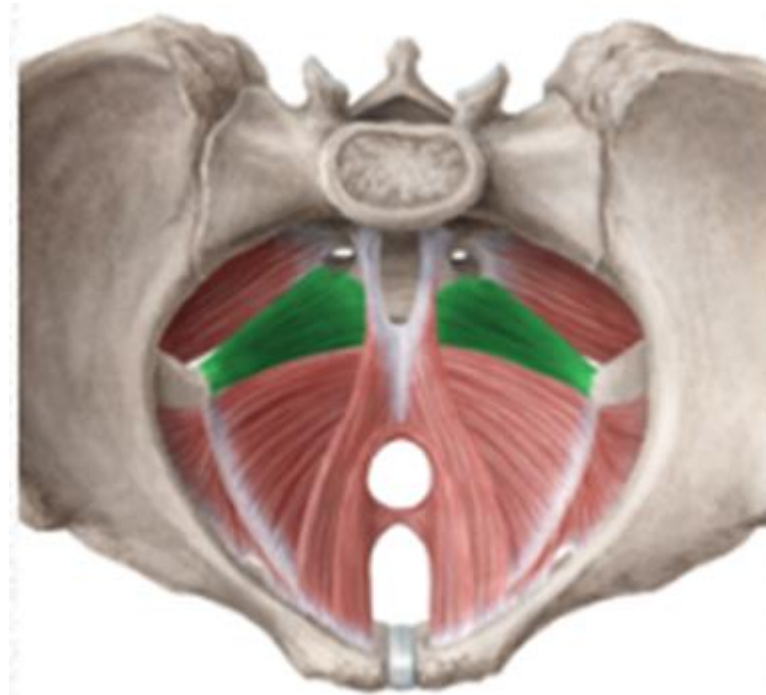


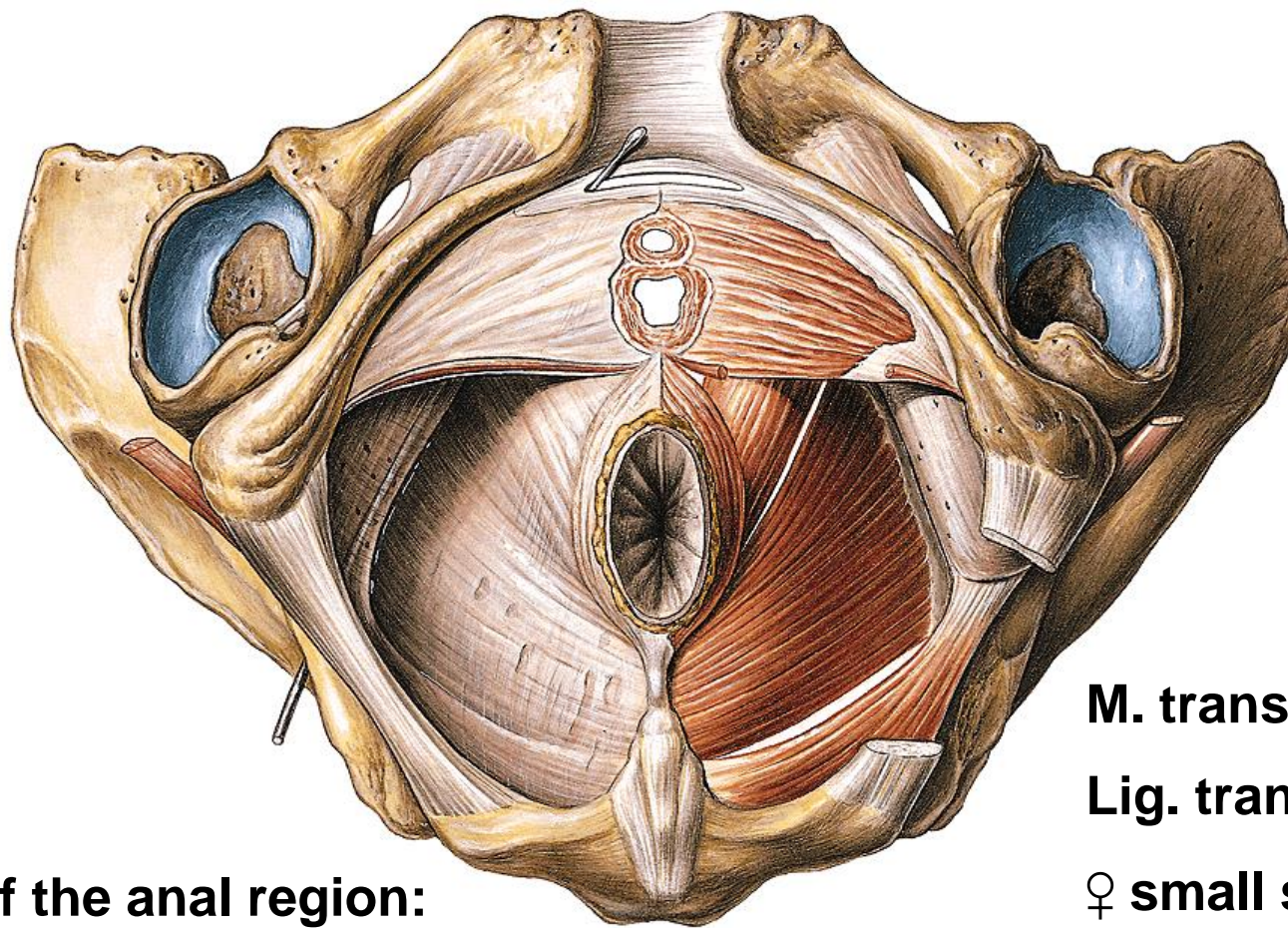
M. coccygeus

O: *spina ischiadica*

I: *lateral parts of the coccyx and sacrum*
(*lies on the sacrospinal lig.*)

Innervation: *sacral plexus*





Muscles of the urogenital region:

**Urogenitale diaphragma
= deep perineal pouch**

Muscles of the anal region:

M. sphincter ani externus

Sacral plexus

Lig. anococcygeum

Fascia diaphragmatis urogenitalis

sup. et inf. –pelvic membrane

M. transversus perinei prof.

Lig. transversum perinei in ♂ anteriorly

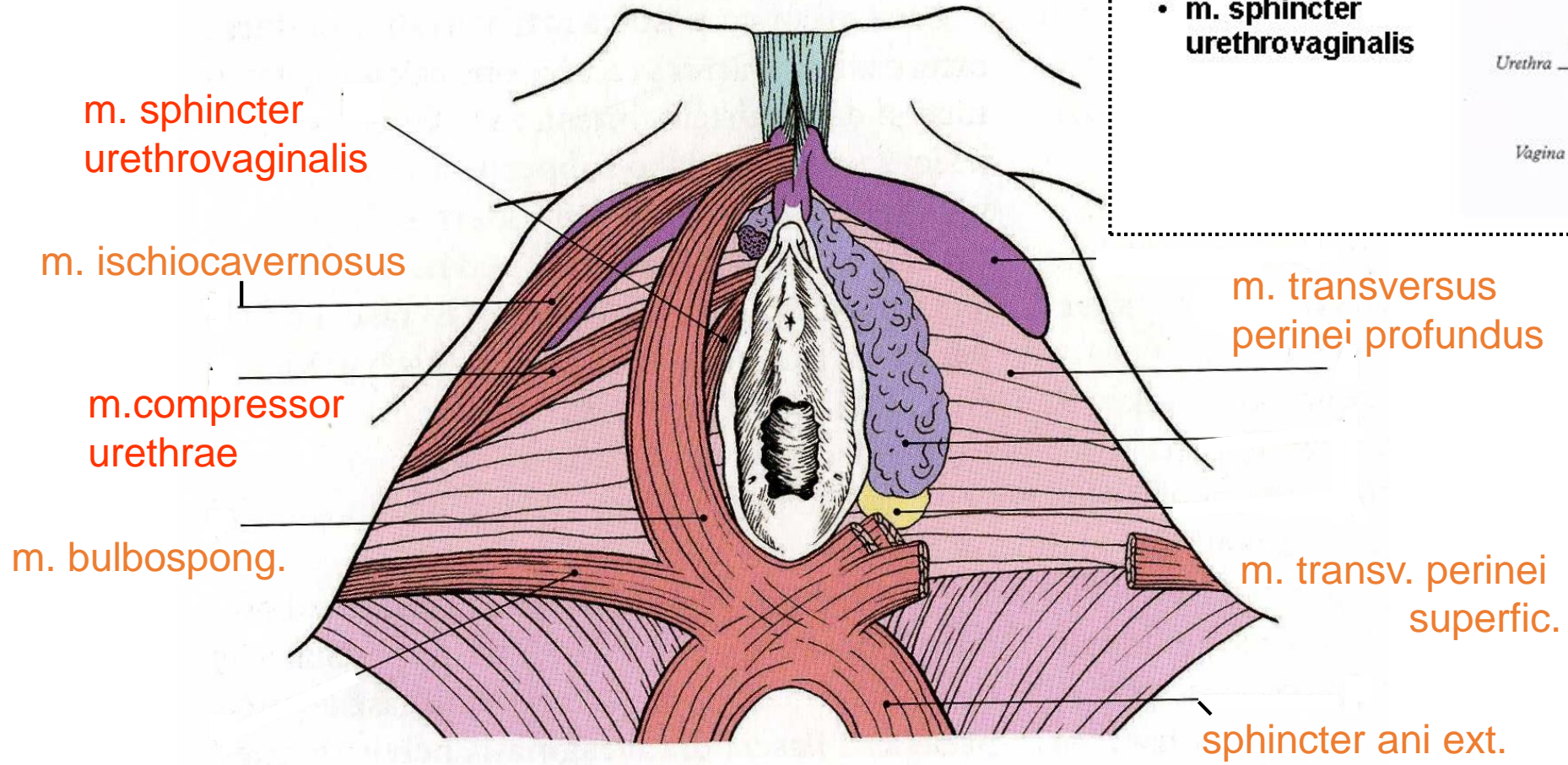
♀ small smooth muscles posteriorly

M. sphincter urethrae externus

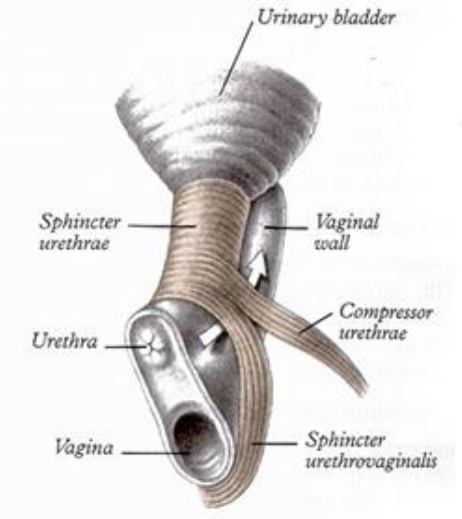
(in ♀ m. sphincter urethrovaginalis)

M. compressor urethrae in ♀ only

Inn. N. pudendus



- m. sphincter urethrae
- m. compressor urethrae
- m. sphincter urethrovaginalis



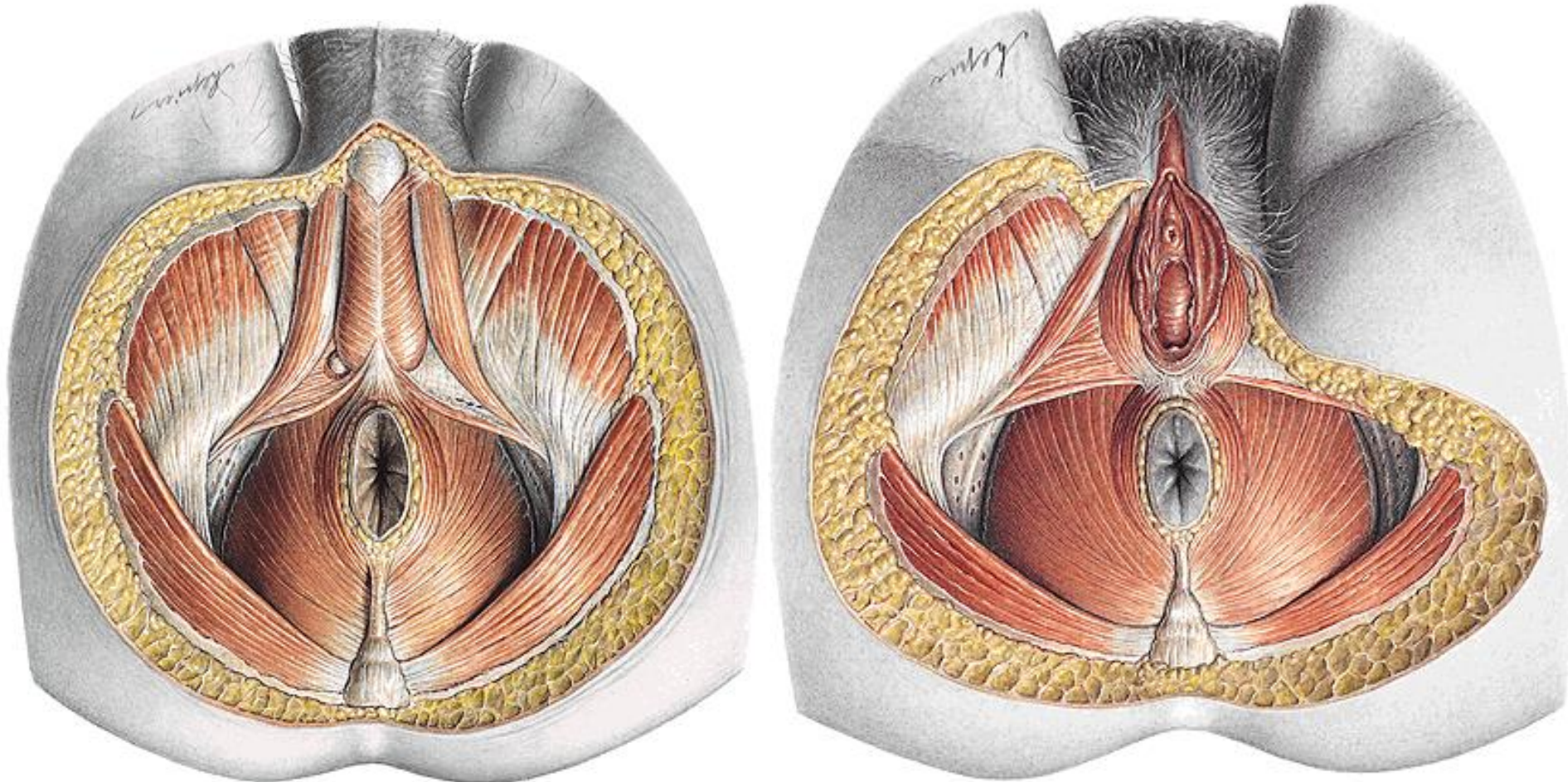
Superficial perineal pouch

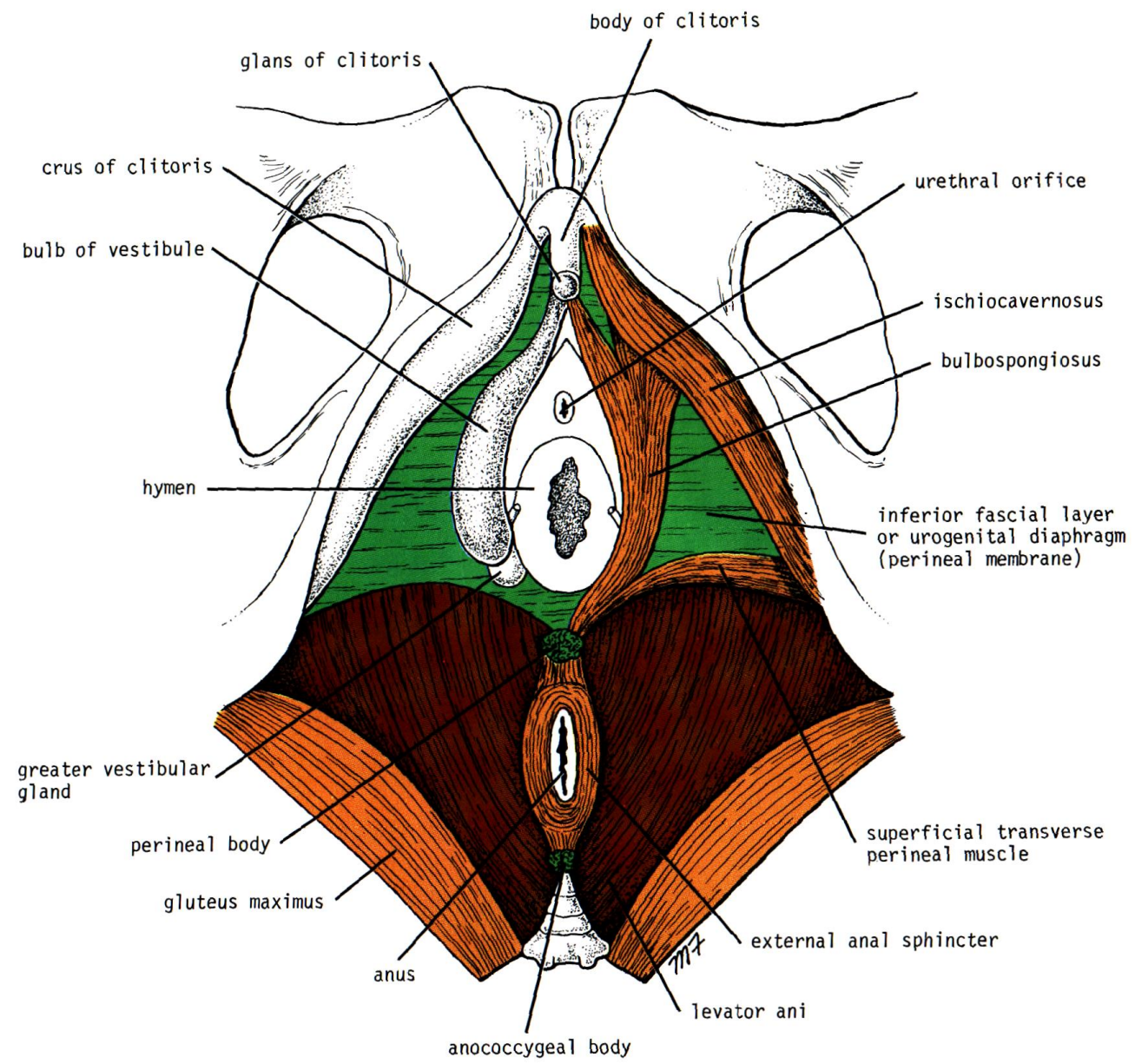
Below the perineal membrane
n. pudendus
Fascia perinei

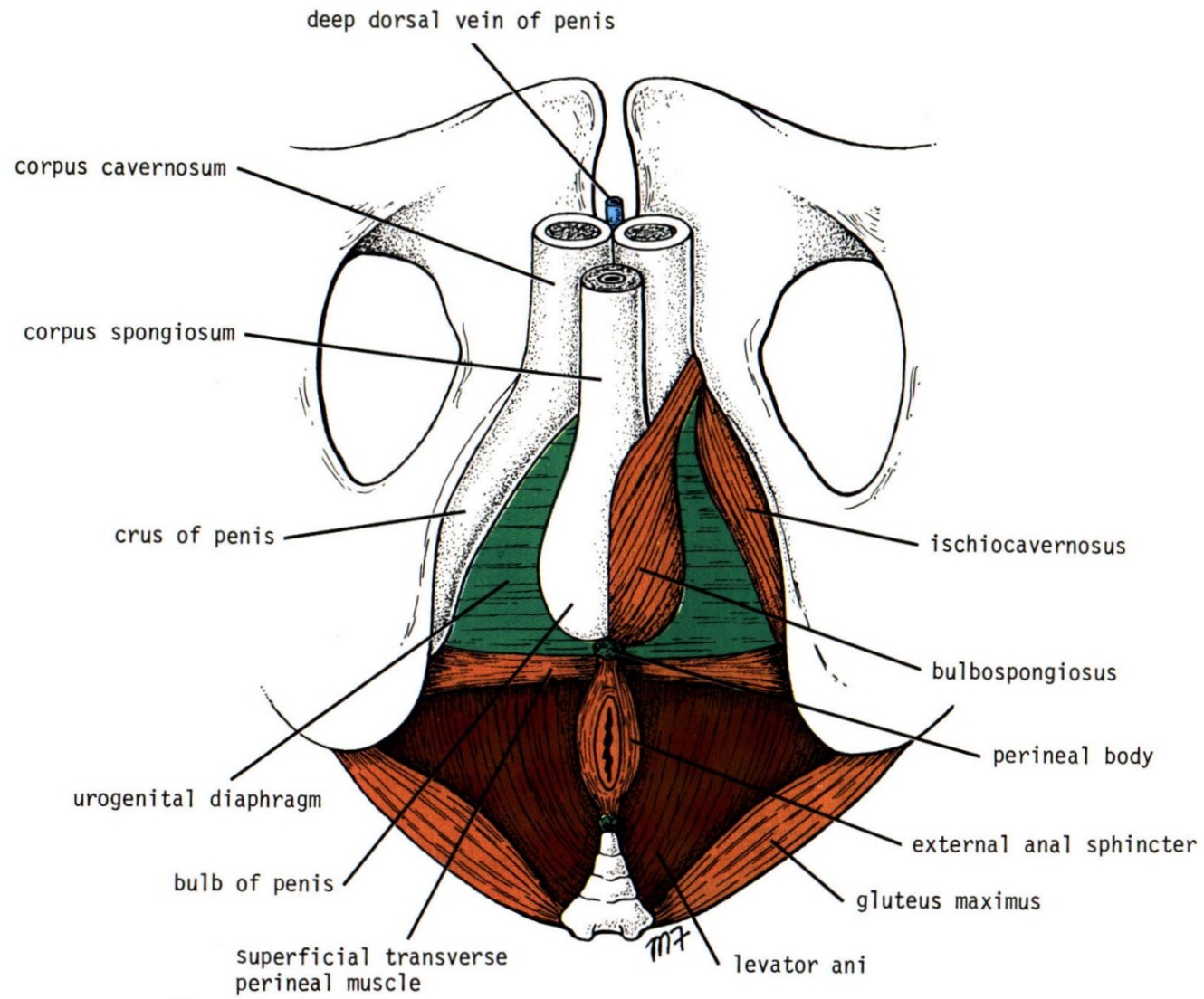
M. ischiocavernosus

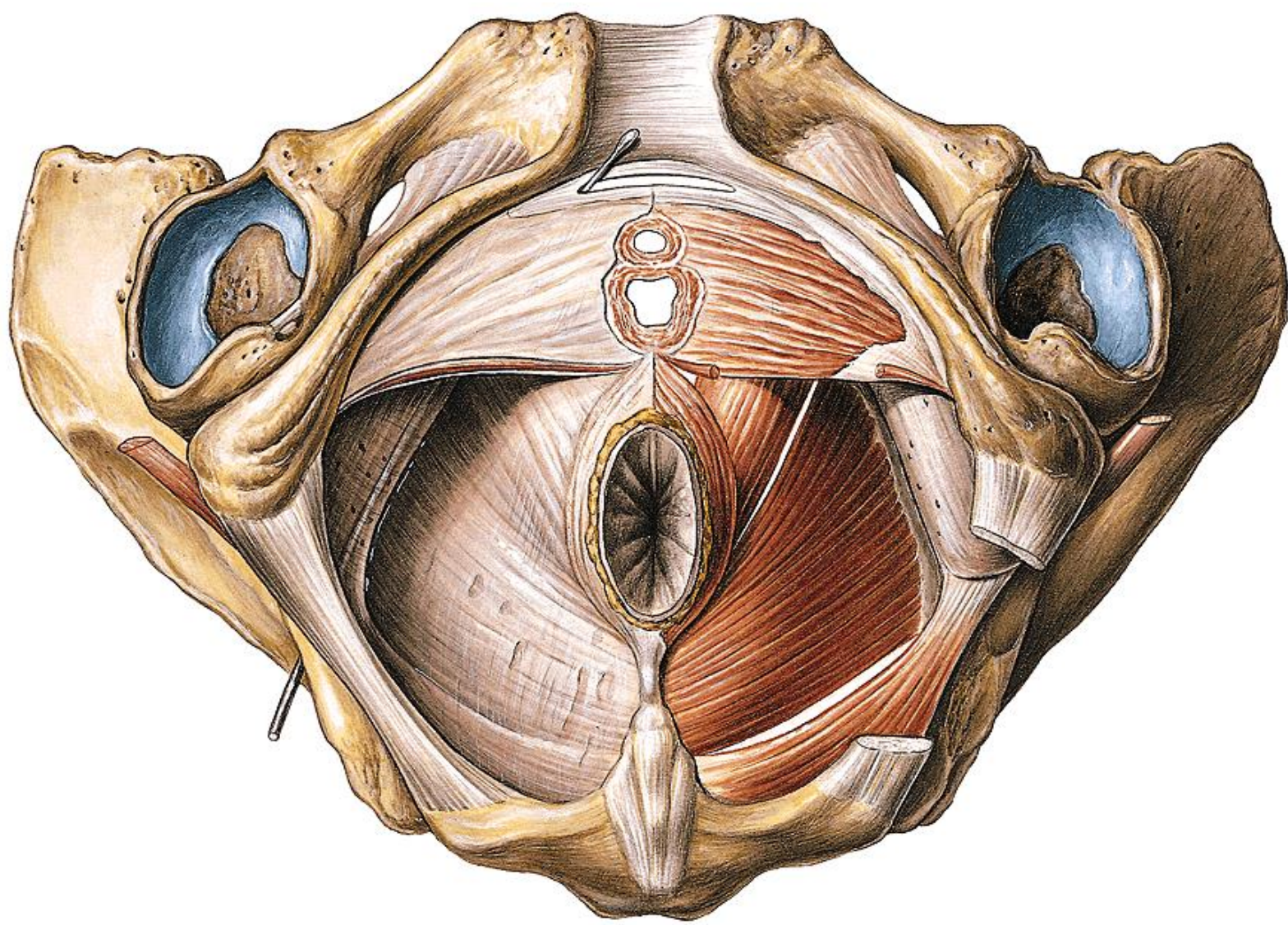
M. bulbospongiosus (M. constrictor cunni)

M. transversus perinei superf.





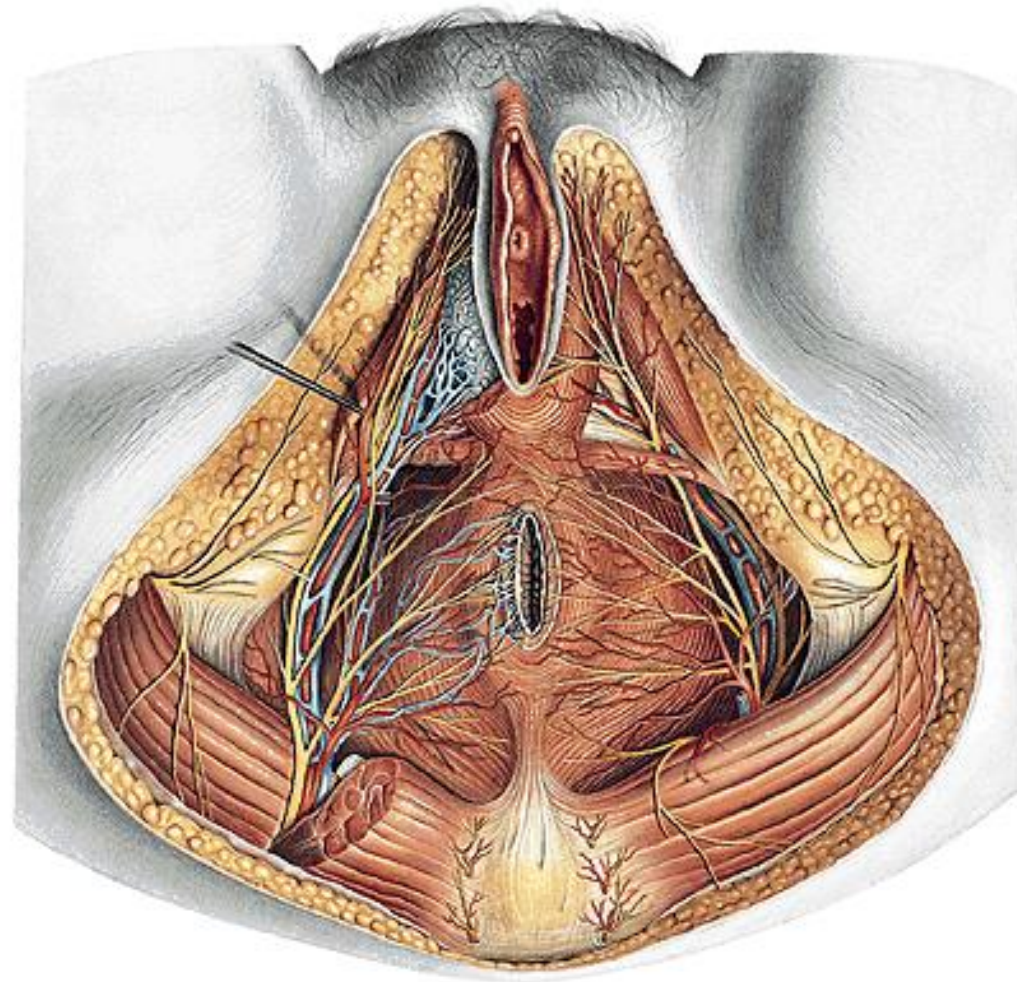
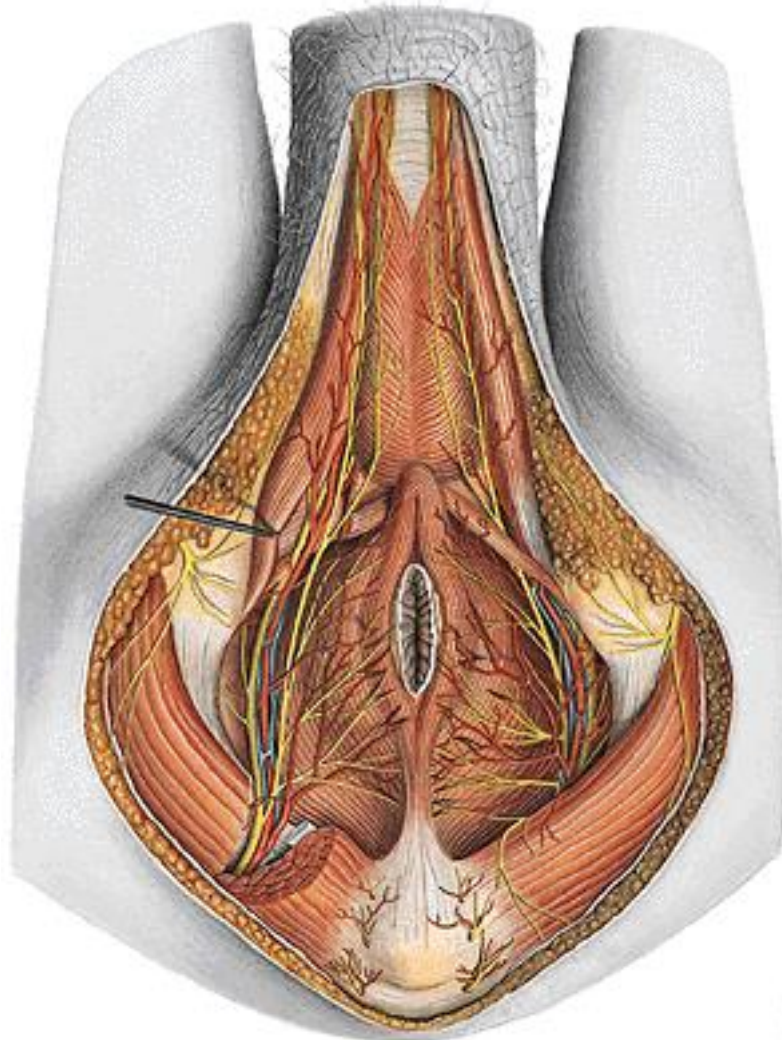




ISCHIORECTAL – ISCHIOANAL - FOSSA

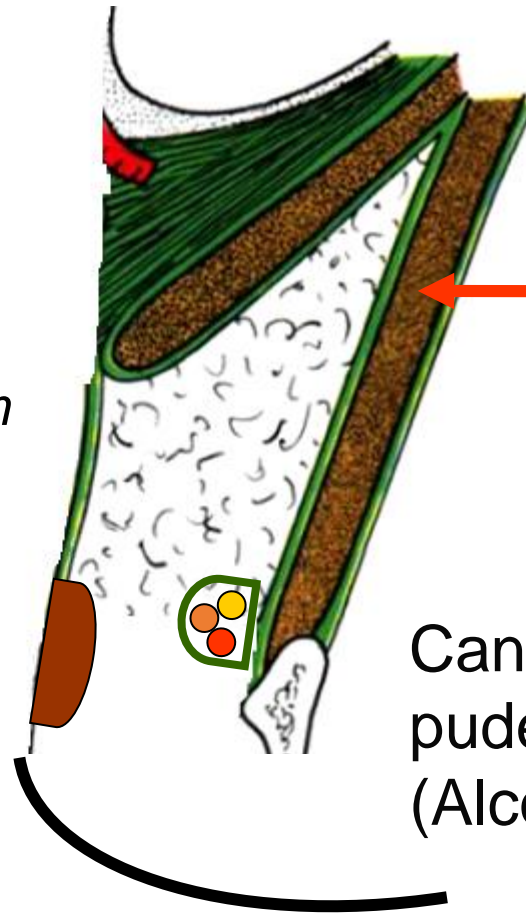
FOSSA ISCHIORECTALIS – recessus pubicus

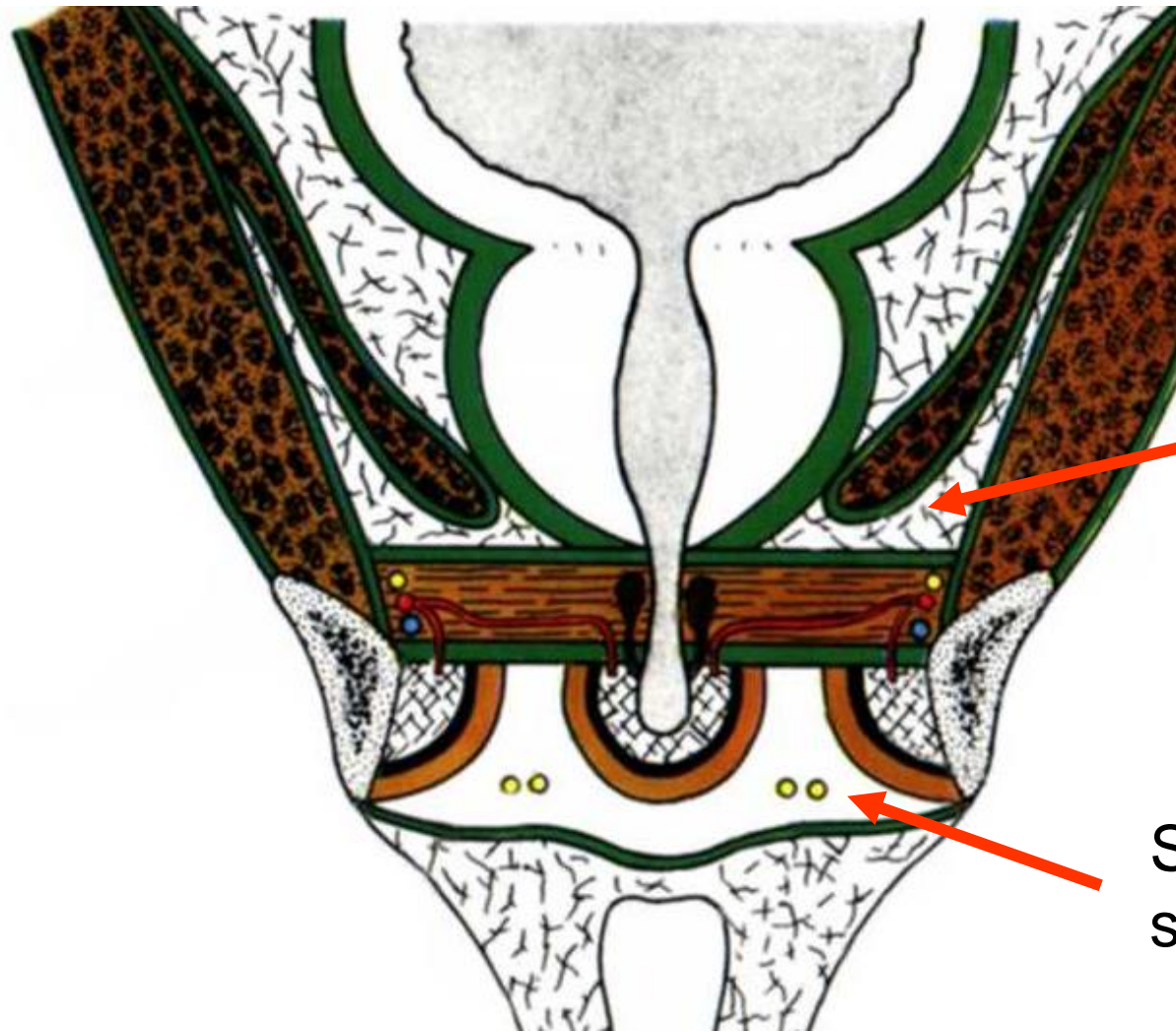
- et v. pudenda interna, n. pudendus – canalis pudendalis
Aa., vv. et nn. rectales inf.





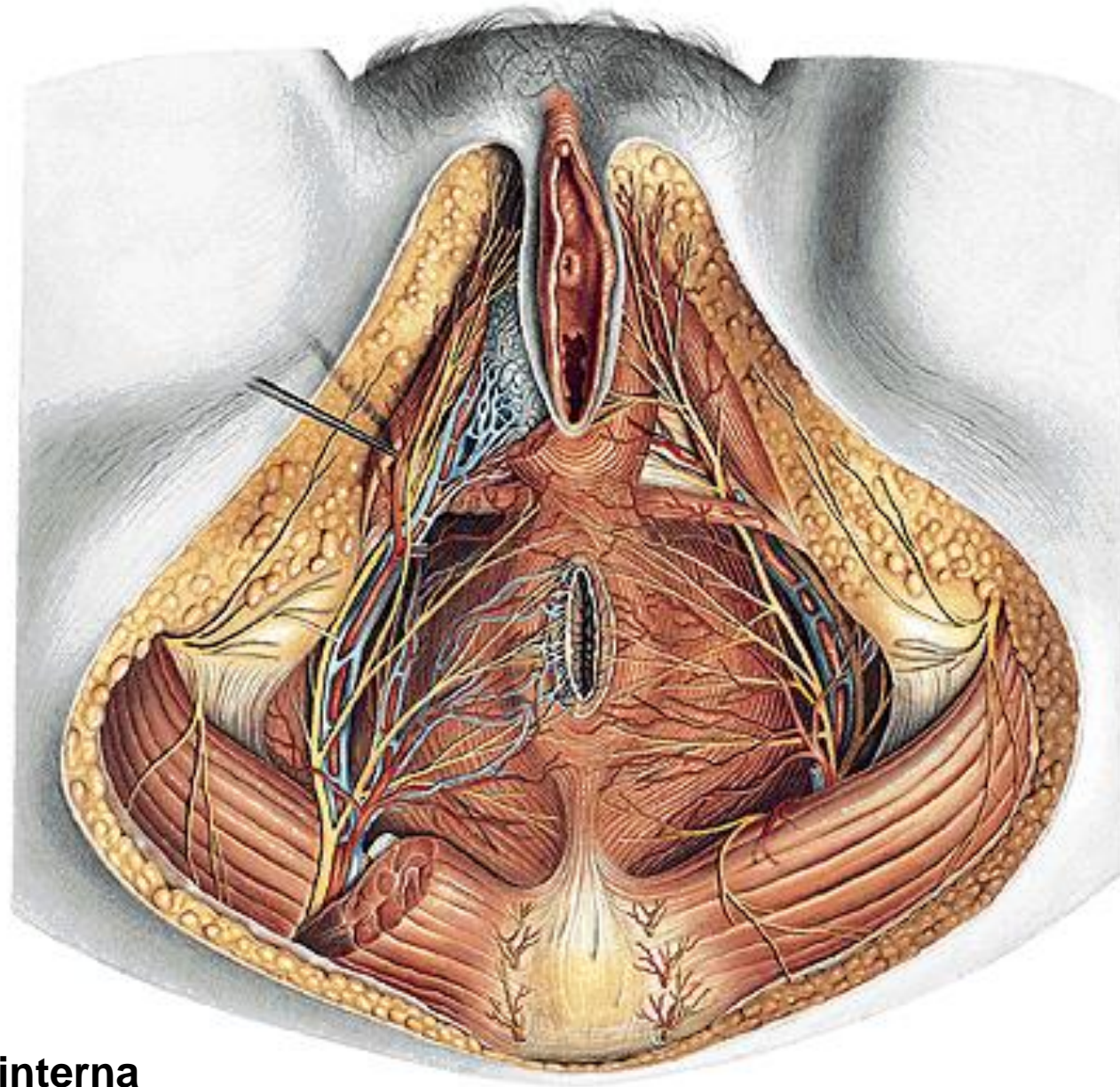
Rectum





Recessus
pubicus

Spatium perinei
superficiale

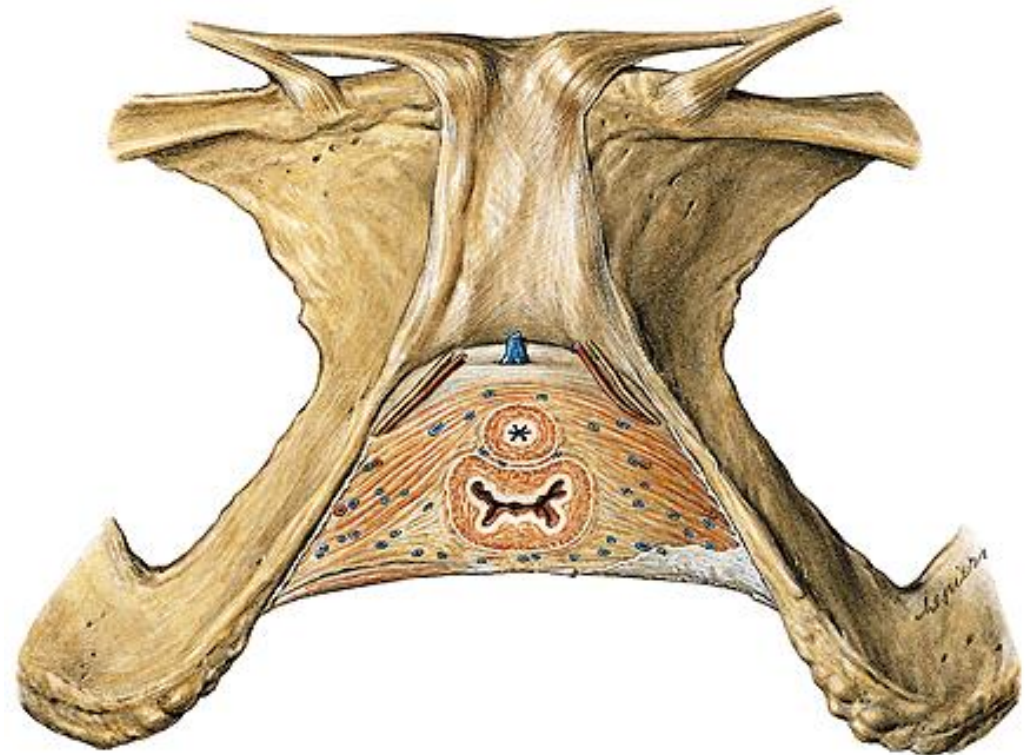
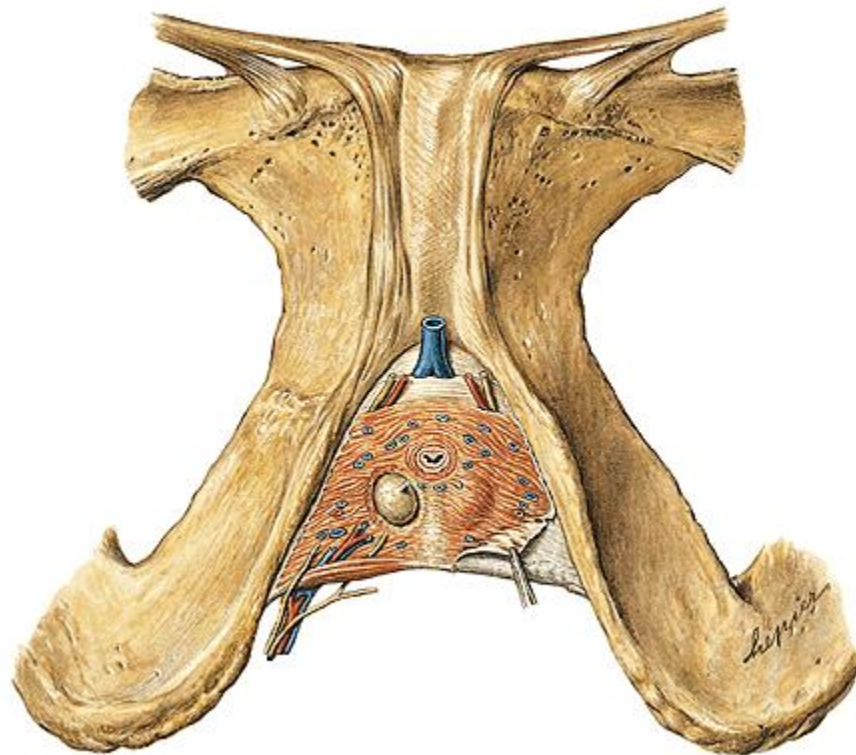


N. pudendus

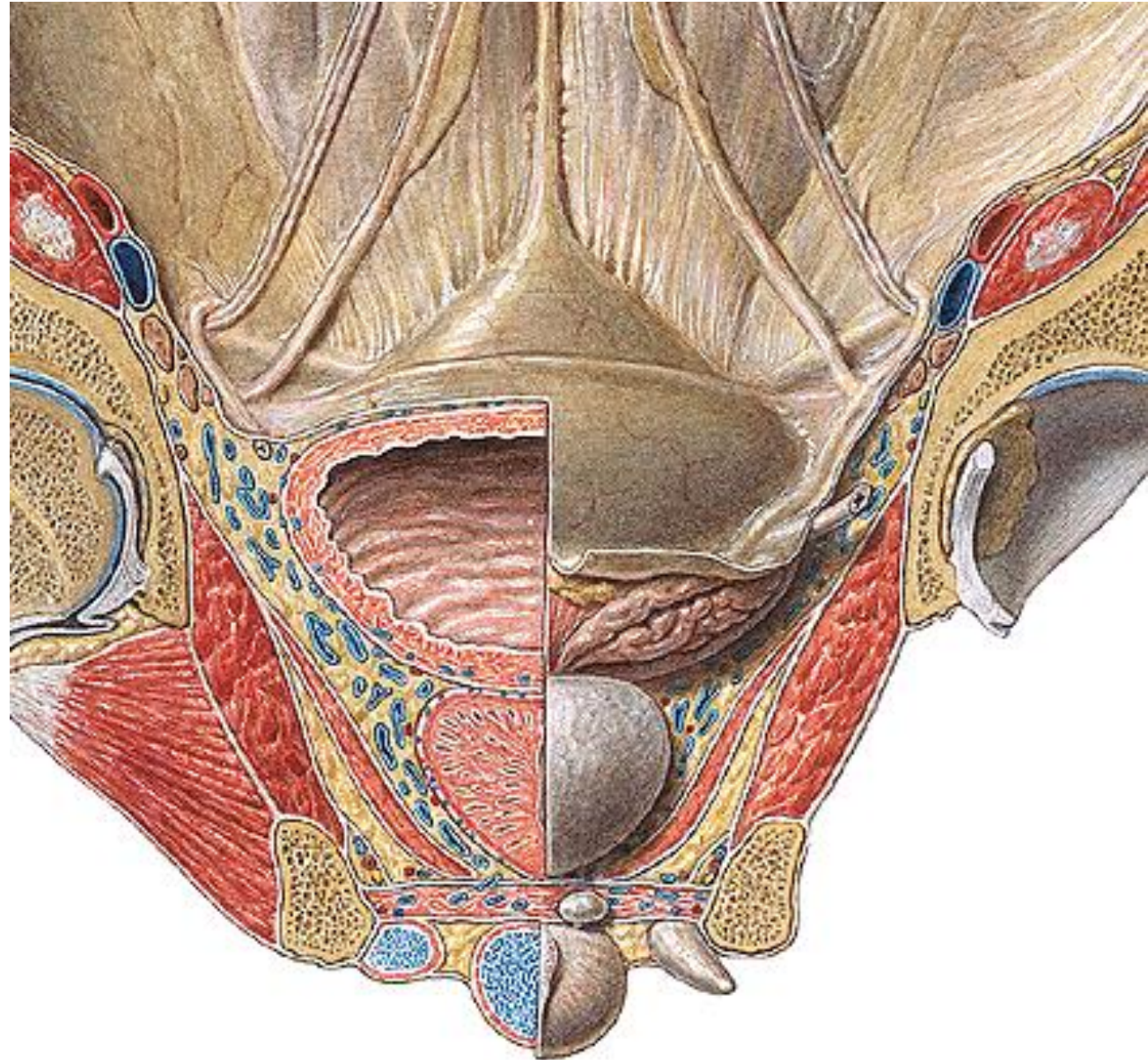
A. et v. pudenda interna

N. cutaneus femoris post. (rr. perineales)

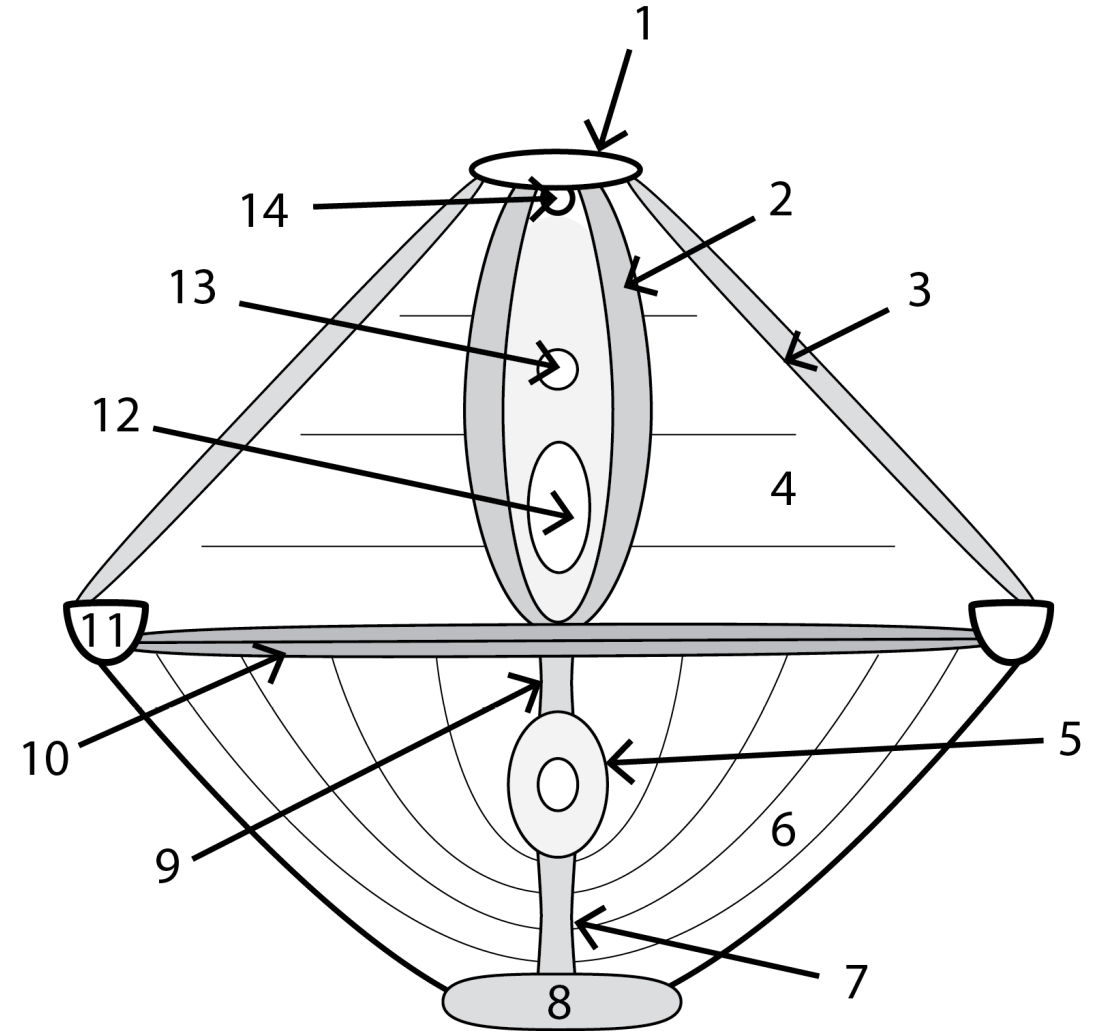
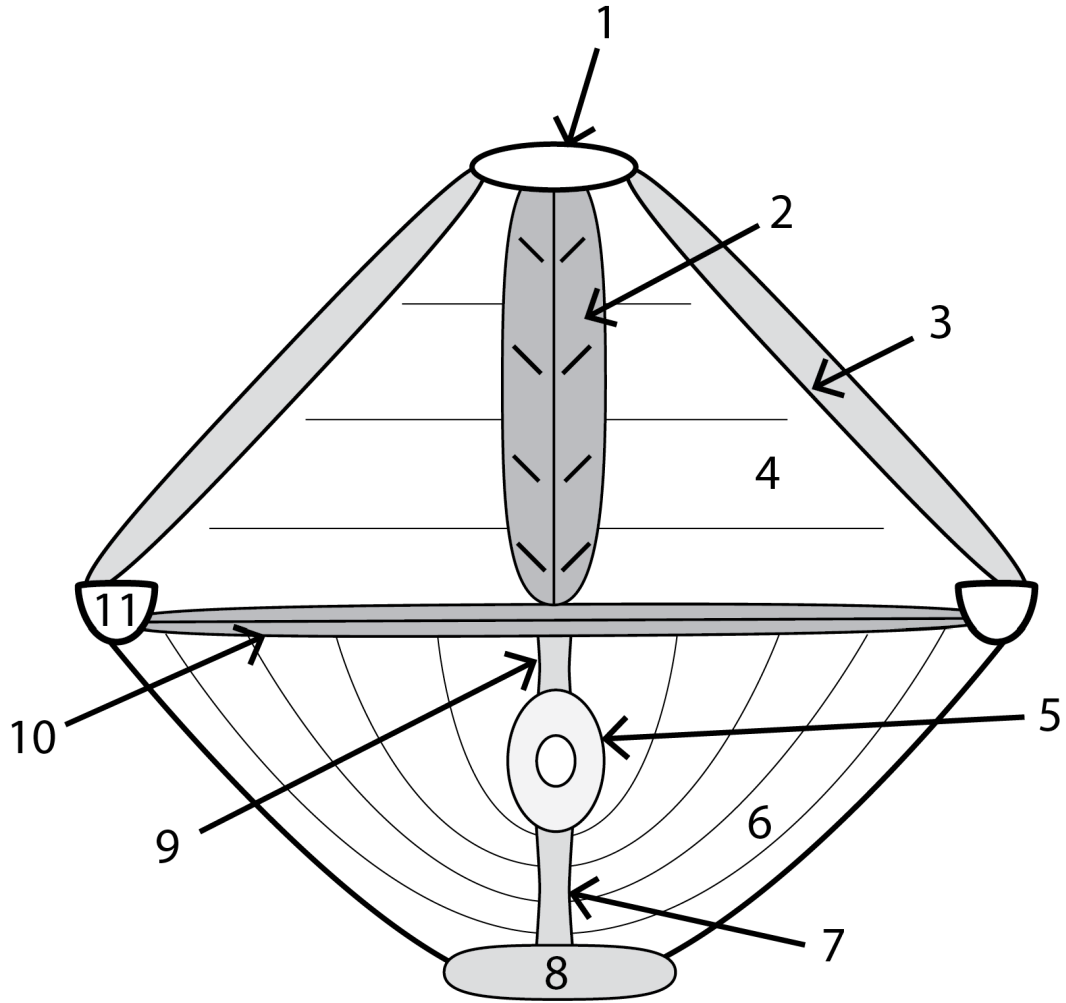
A. dorsalis penis (clitoridis)
N. dorsalis penis (clitoridis)
V. dorsalis penis (clitoridis) profunda
A.,v. et n. perinealis
Gl. bulbourethralis



Fascia diaphragmatis urogenitalis sup. et inf.
Spatium perinei profundum
Fascia perinei spf.
Spatium perinei spf.
Recessus pubicus
fossae ischio-
rectalis



To review:



Any questions?



Thank you for your attention



Department of Anatomy
MU Brno, Czech Republic



Illustrations and photographs were copied from:
Atlas der Anatomie des Menschen/Sobotta.
Putz,R., und Pabst,R. 20. Auflage. München:
Urban & Schwarzenberg, 1993
Netter: Interactive Atlas of Human Anatomy.
Windows Version 2.0
Čihák R: Anatomie 2 (Splanchnologia). Avicenum,
zdravotnické nakladatelství, Praha, 1988.