

ORGANUM VESTIBULOCOCHLEARE

Auris externa, media et interna

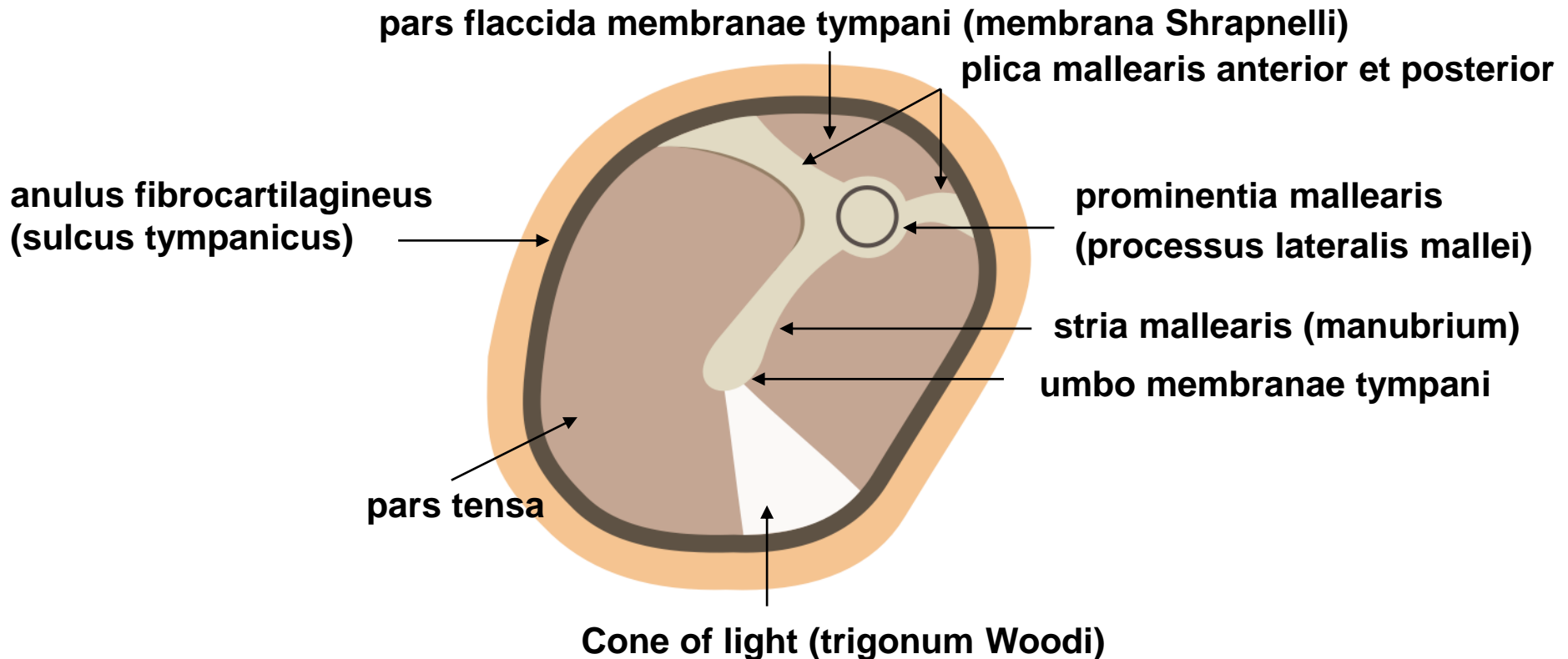
Auris externa	Auricula Meatus acusticus externus Membrana tympani
Auris media	Cavitas tympani Ossicula auditus Tuba auditiva
Auris interna	Labyrinthus osseus Labyrinthus membranaceus

MEMBRANA TYMPANI

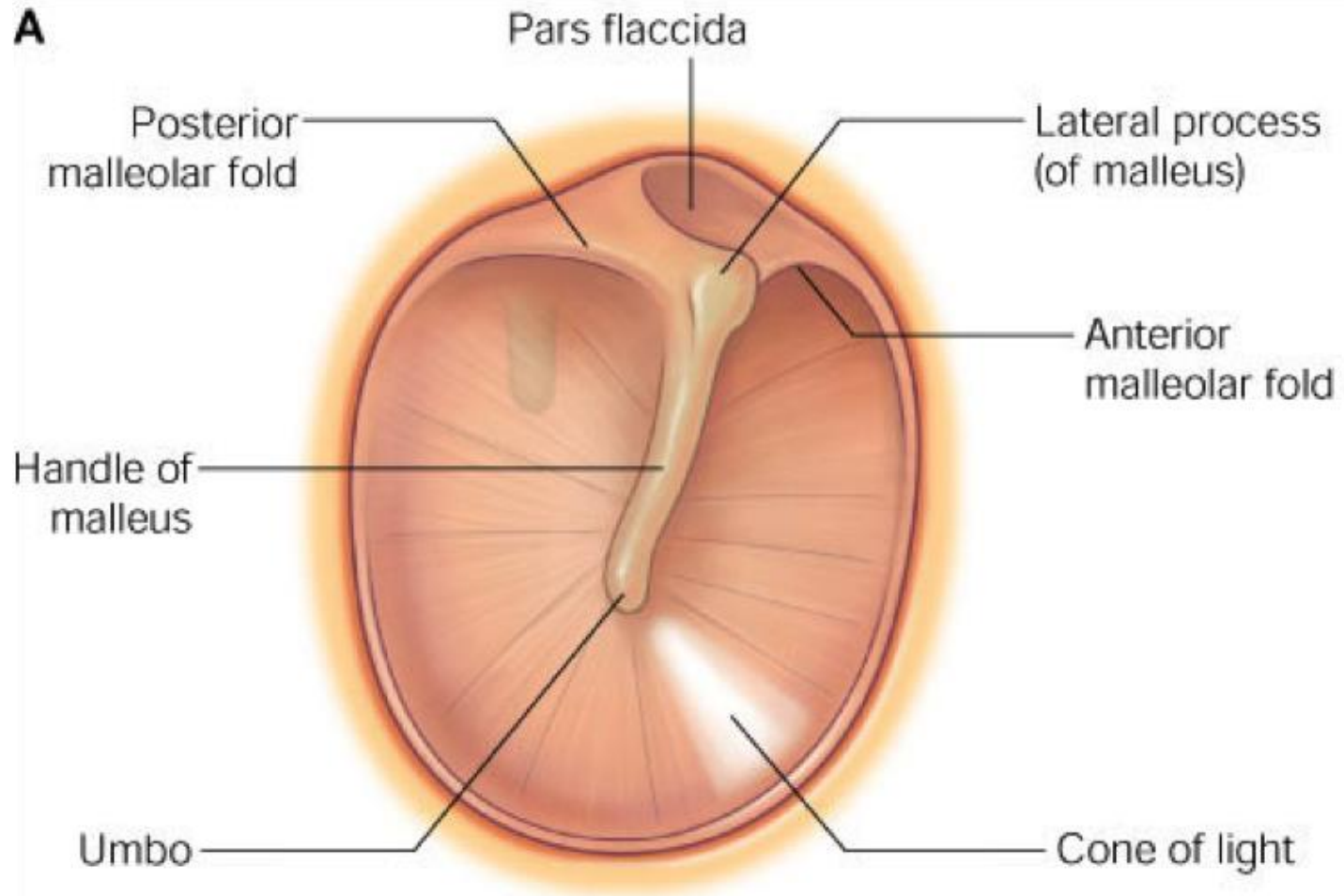
Middle connective tissue layer – stratum membranaceum

External layer - stratum cutaneum

Internal layer - stratum mucosum



A



Copyright © 2005 by Elsevier, Inc.

CAVITAS TYMPANI (eardrum)

paries membranaceus

- bubínek

paries labyrinthicus

- promontorium
- fenestra vestibuli
- fenestra cochleae

paries jugularis

- apertura externa canaliculi tympanici

paries tegmentalis

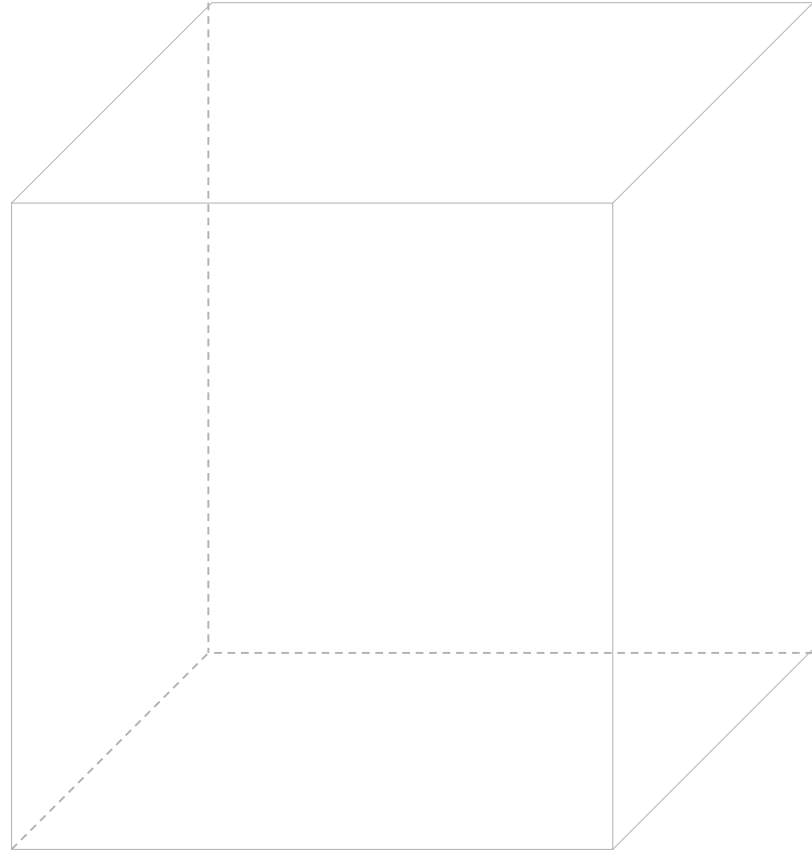
- hiatus canalis nervi petrosi minoris

paries caroticus

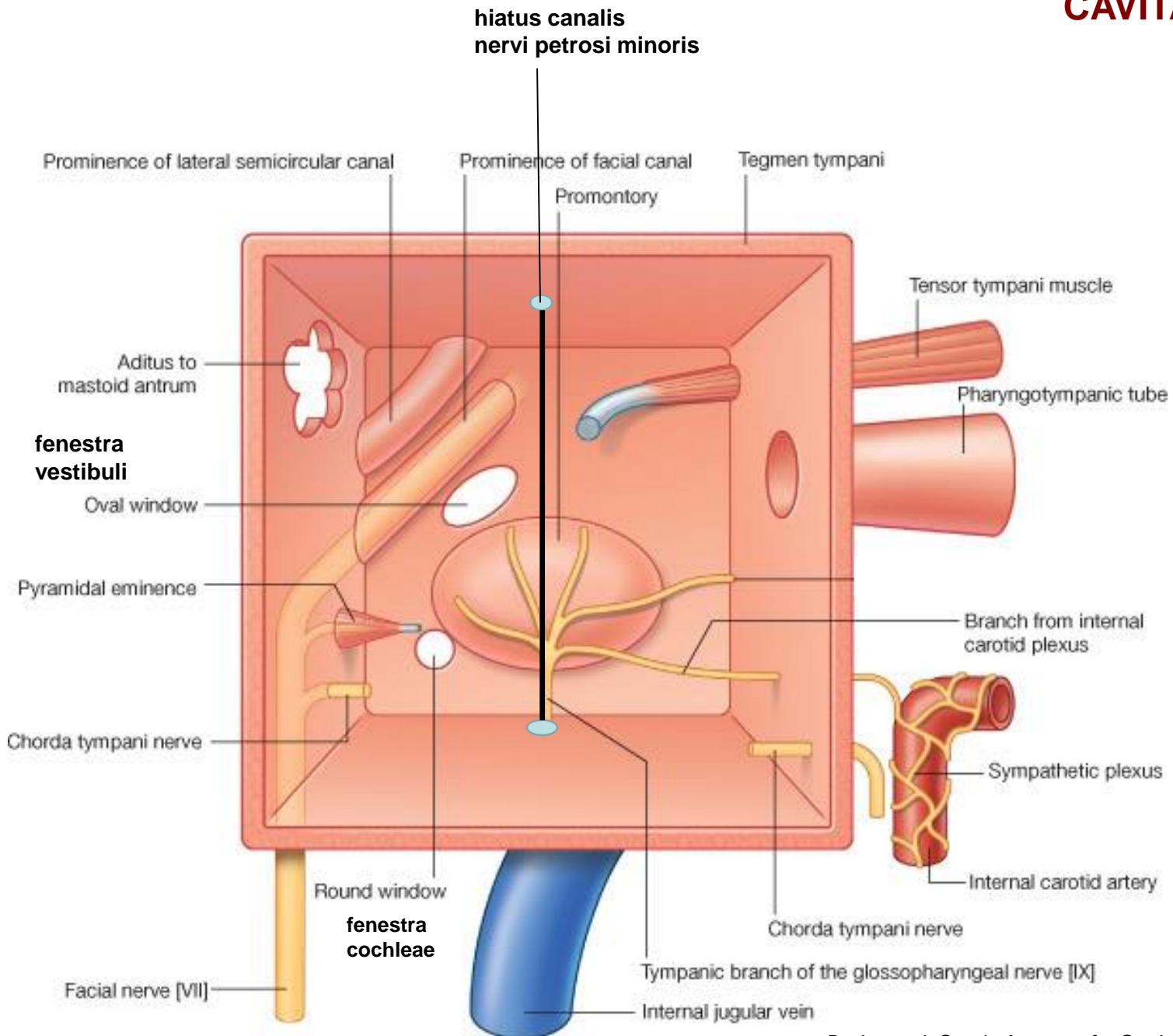
- canaliculi caroticotympanici
- canalis musculotubarius
 - semicanalis musculi tensori tympani*
 - semicanalis tubae auditivae*

paries mastoideus

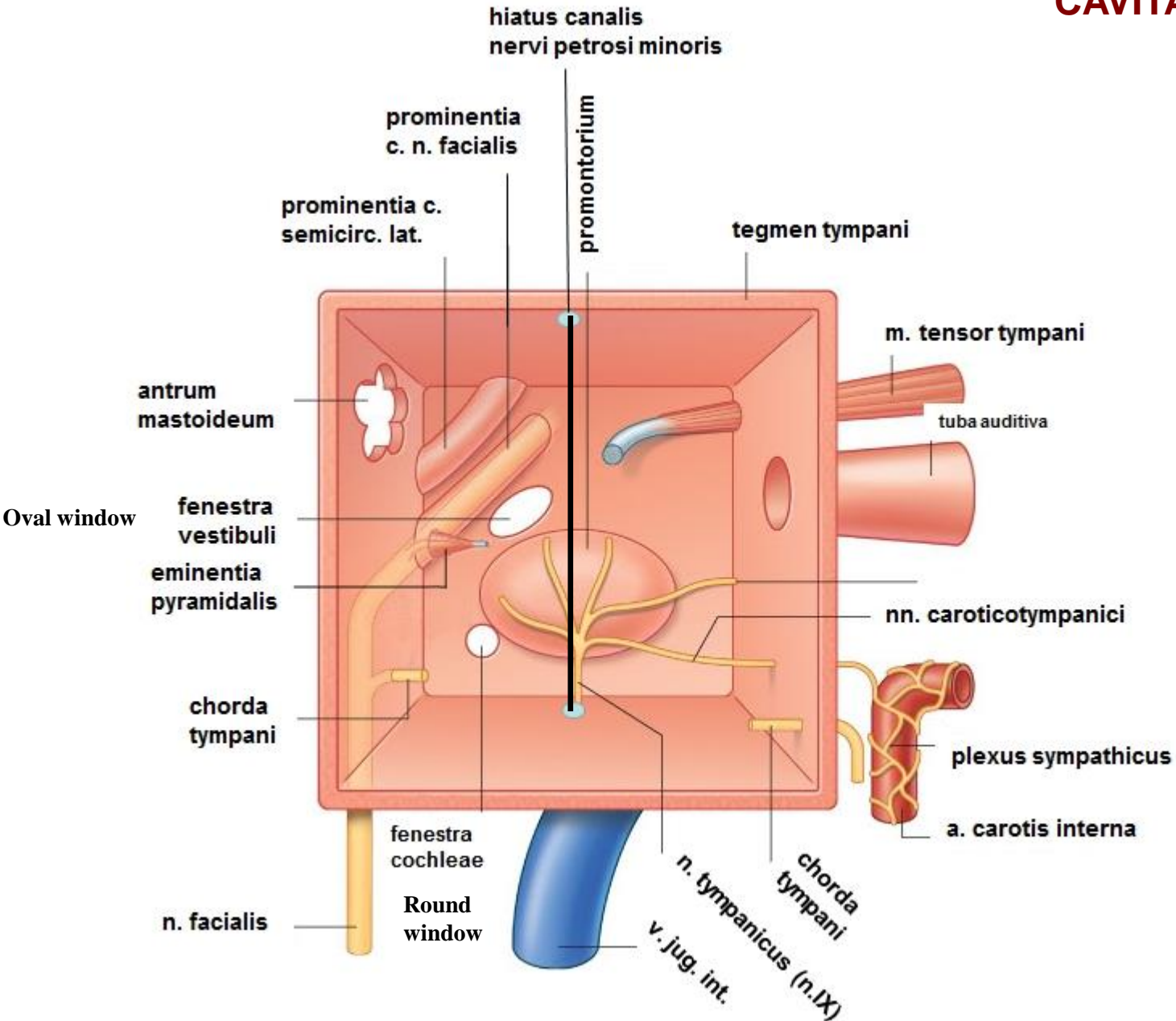
- antrum mastoideum



CAVITAS TYMPANI



CAVITAS TYMPANI



OSSICULA AUDITUS

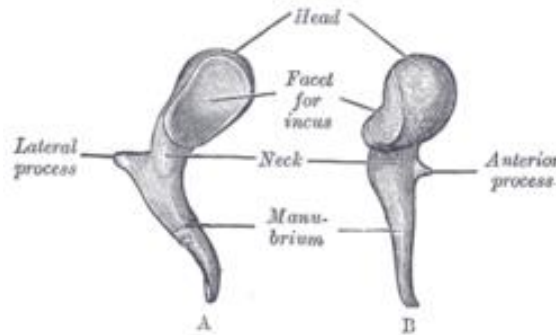
Malleus

Caput mallei

Manubrium mallei

Processus lateralis

Processus anterior



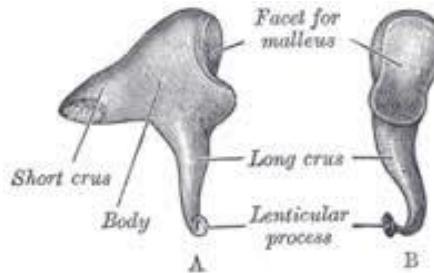
Art. incudomallearis

Incus

Corpus incudis

Crus longum

Crus breve



Art. incudostapedialis

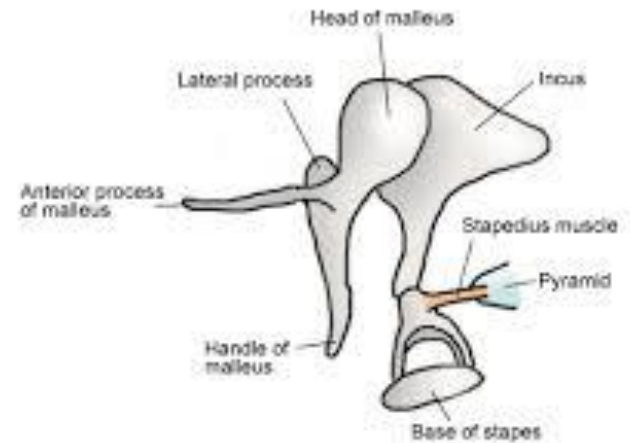
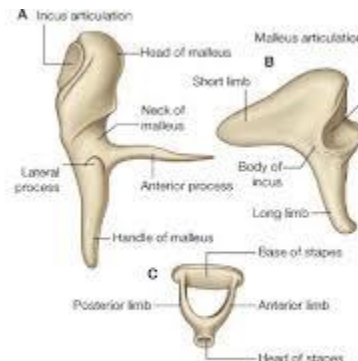
Stapes

Caput stapedis

Crus anterius

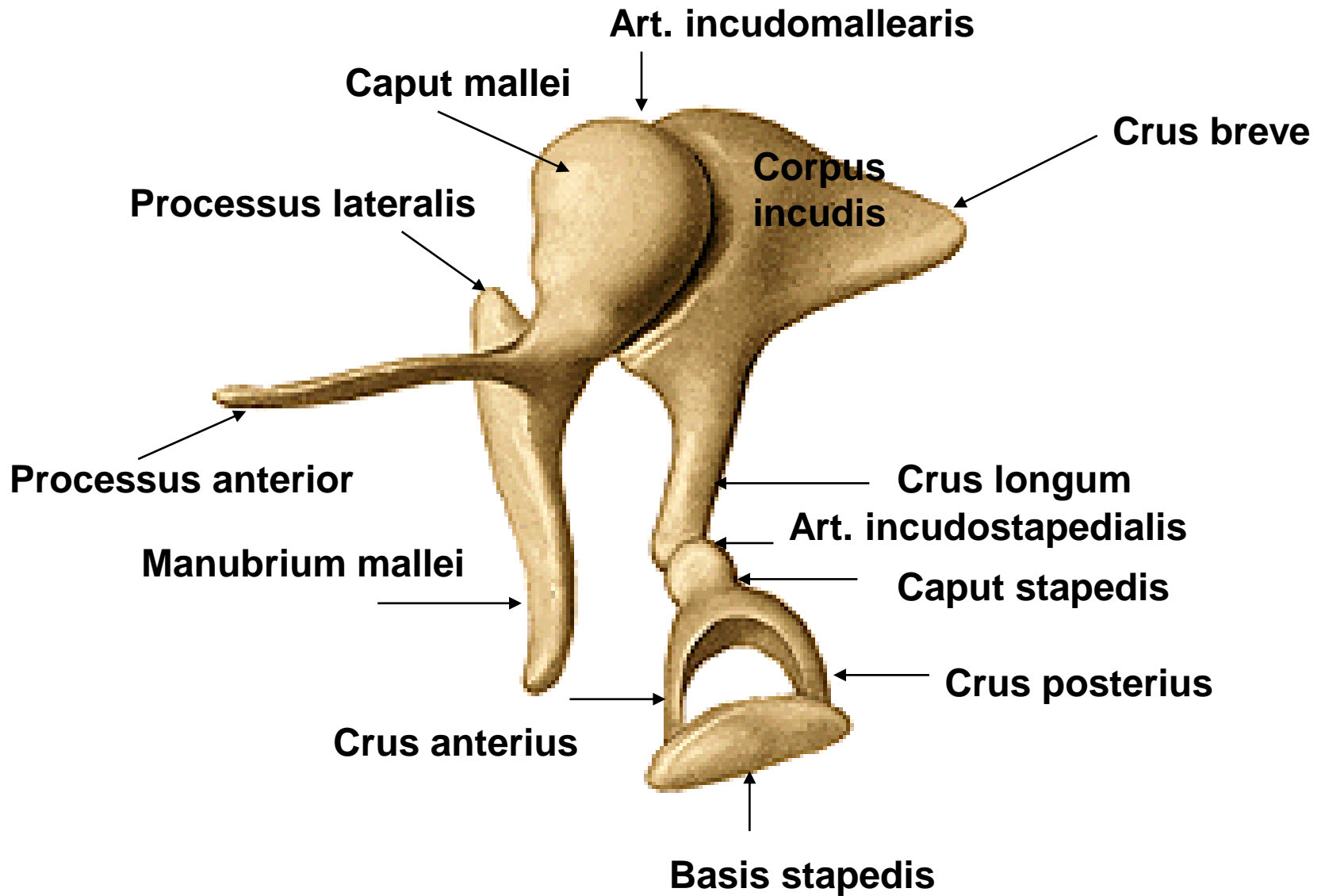
Crus posterius

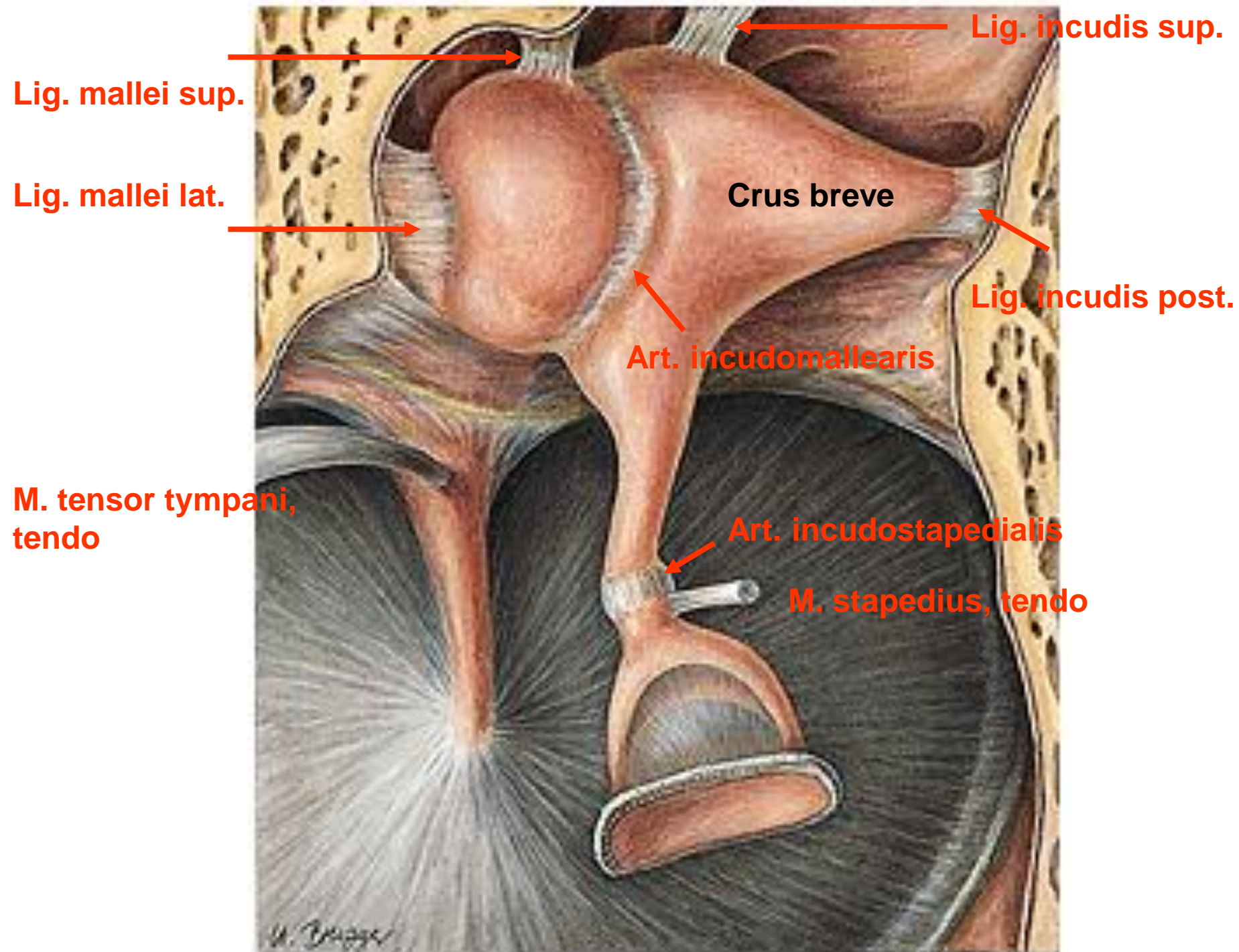
Basis stapedis

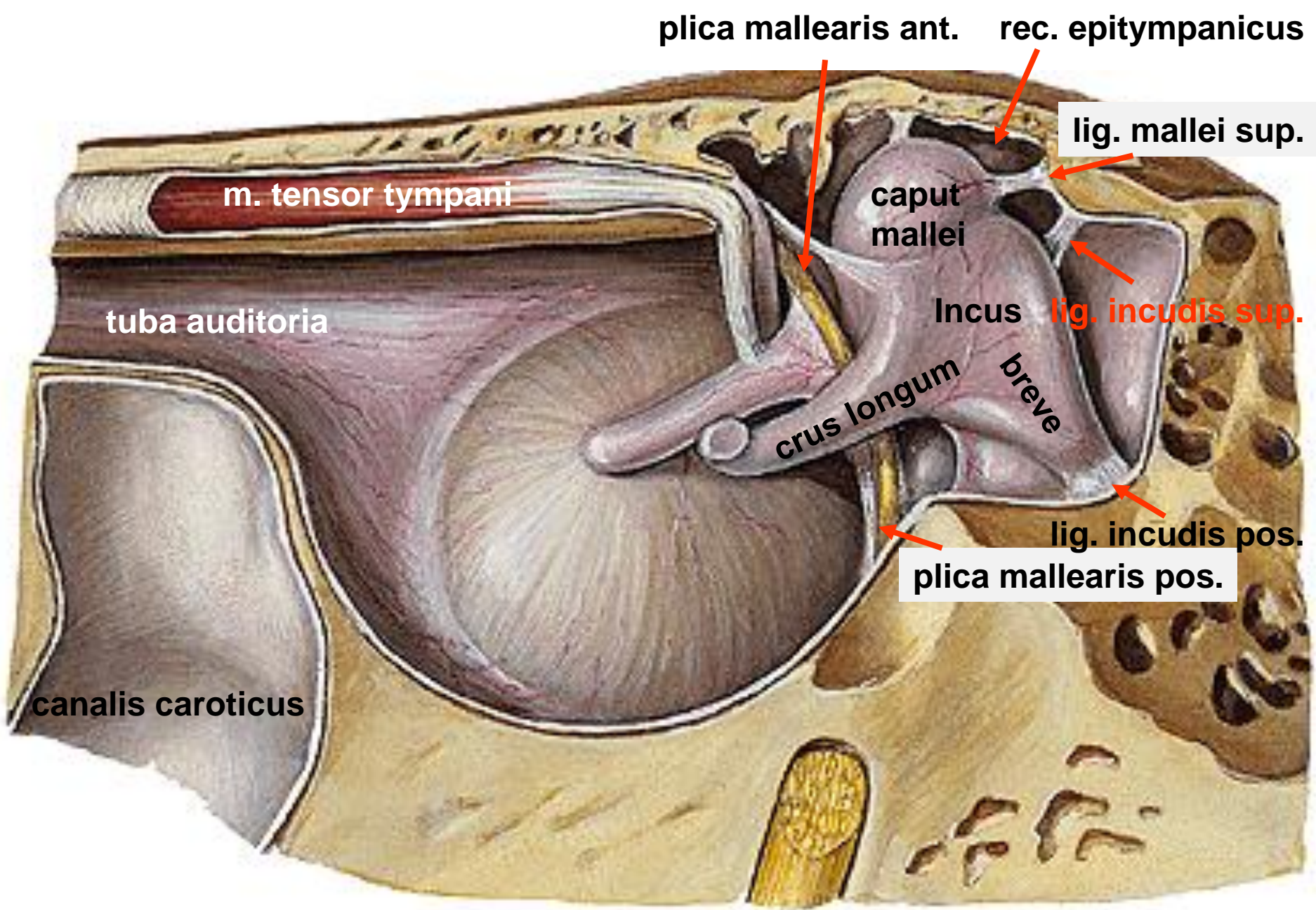


©2006 St. George's, University of London

OSSICULA AUDITUS







plica mallearis ant.

rec. epitympanicus

m. tensor tympani

lig. mallei sup.

caput mallei

tuba auditoria

Incus

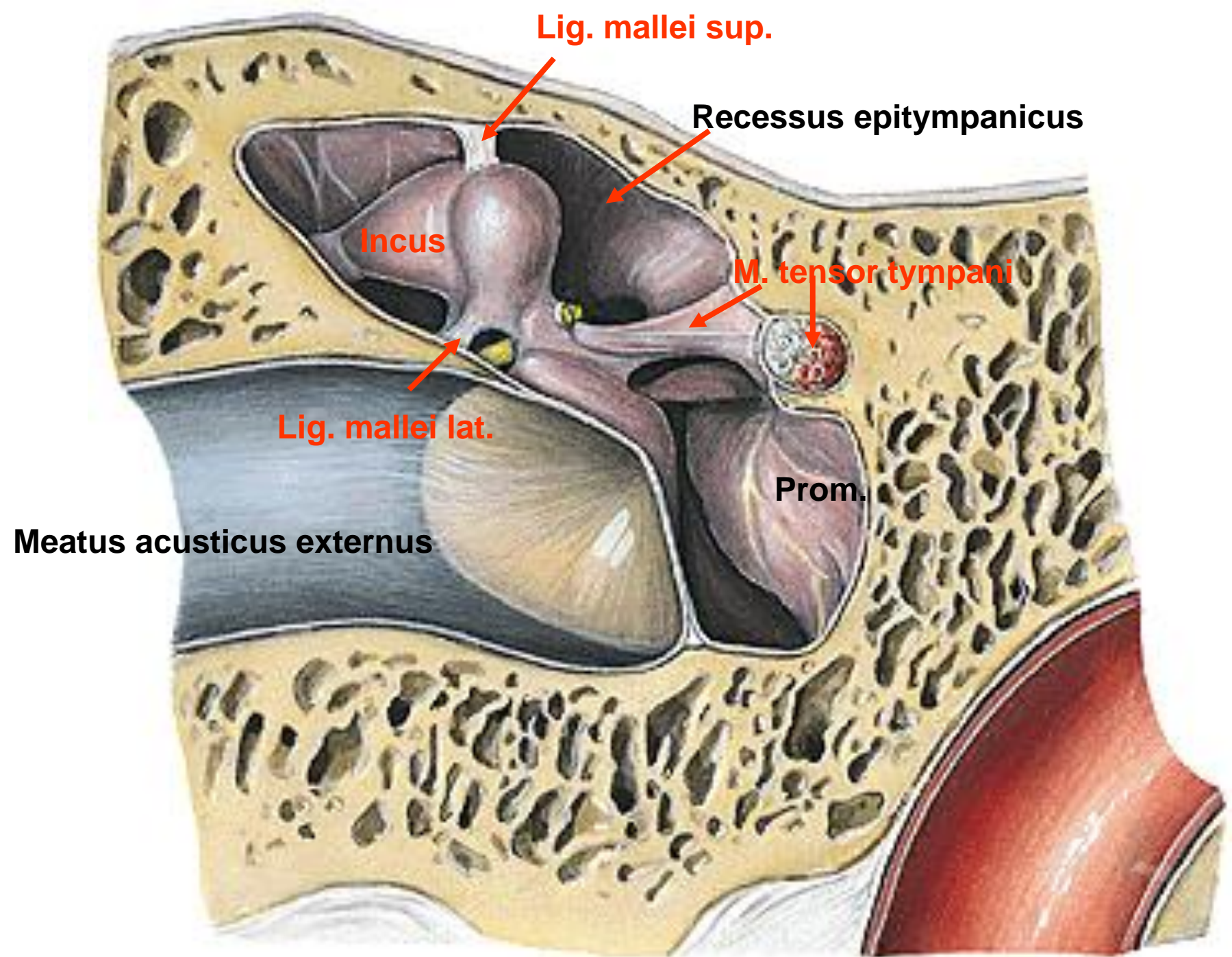
lig. incudis sup.

crus longum

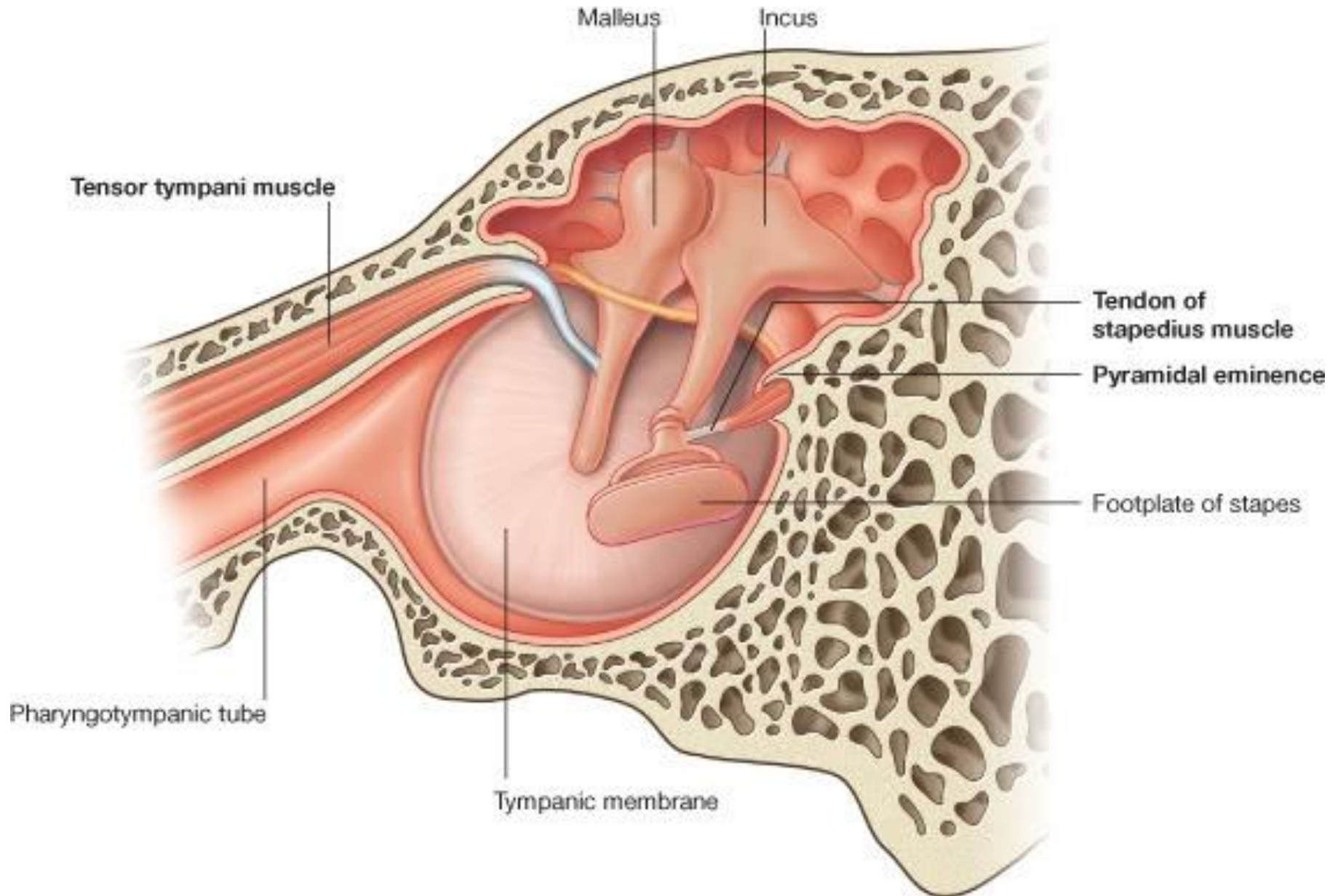
breve

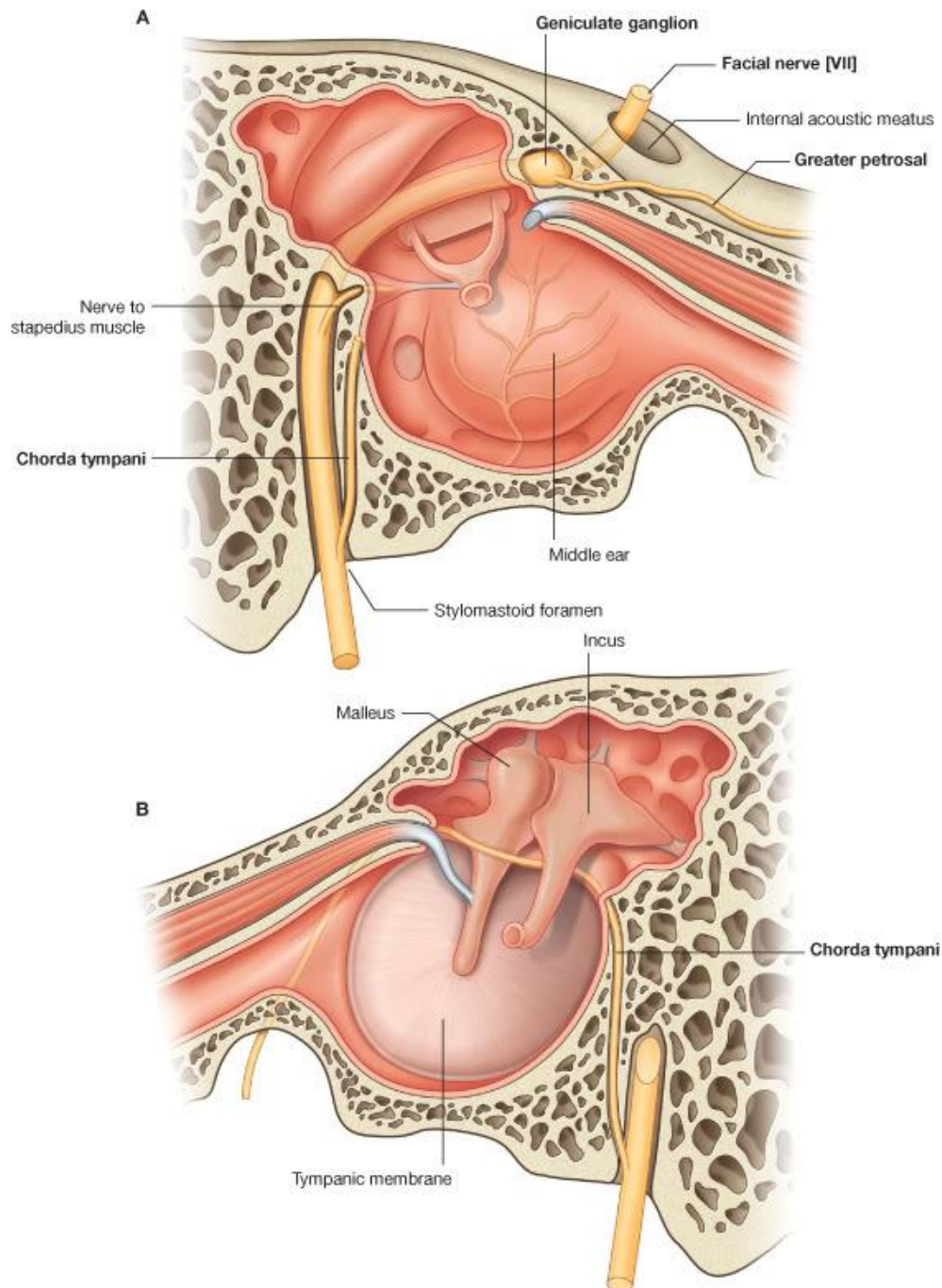
canalis caroticus

lig. incudis pos.
plica mallearis pos.



Ossicular chain





TUBA AUDITIVA, EUSTACHIAN TUBE

pars ossea tubae auditivae (10mm)

ostium tympanicum tubae auditivae

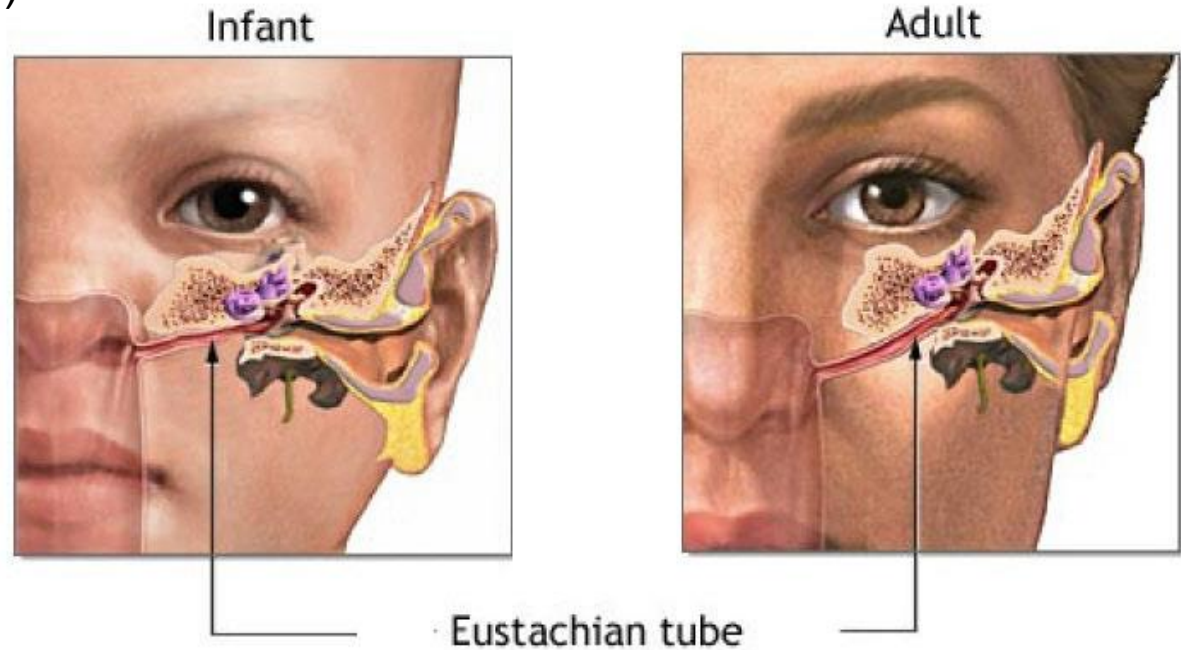
pars cartilaginea tubae auditivae (25 mm)

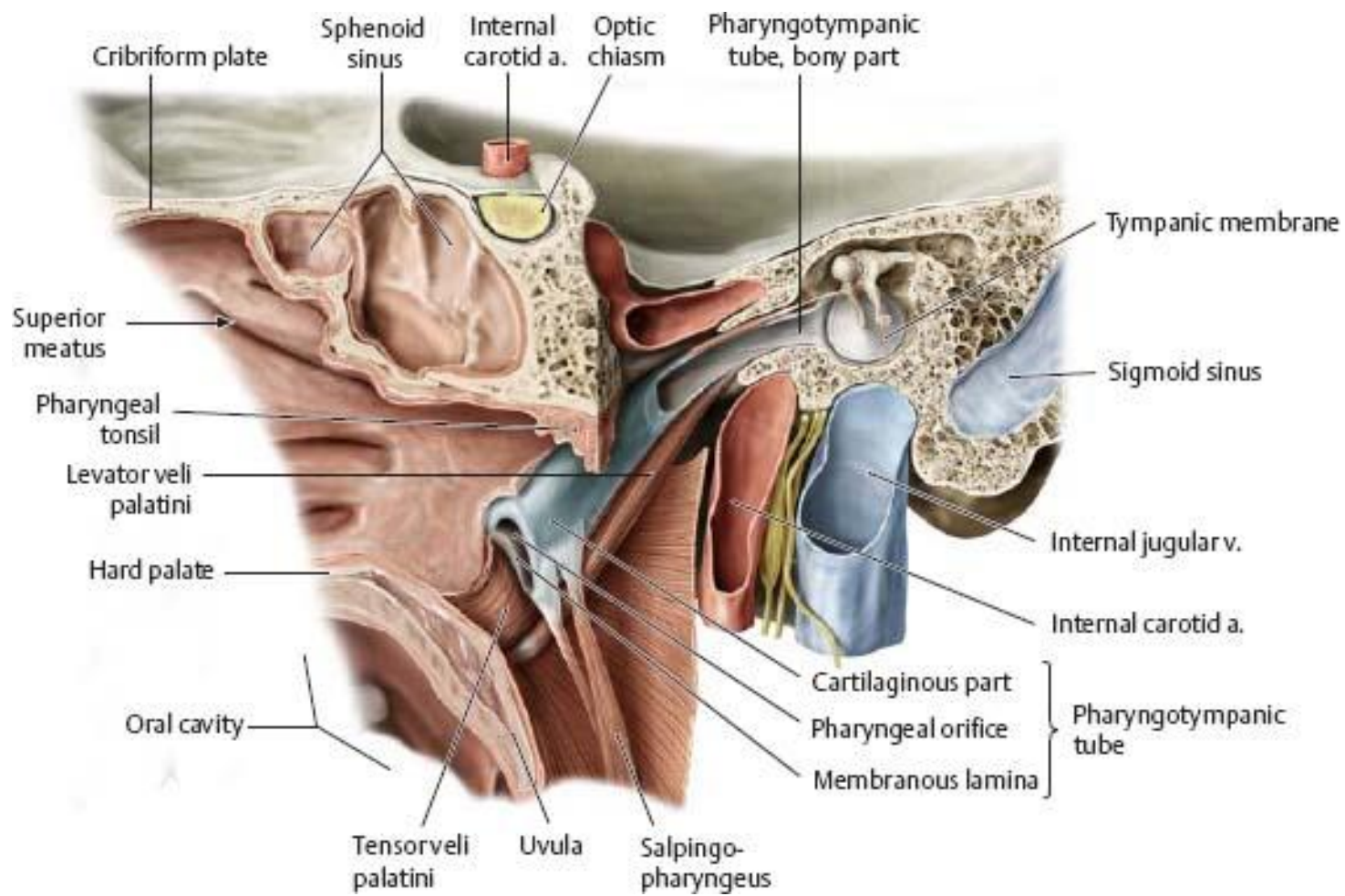
lamina medialis et lateralis

ostium pharyngeum tubae auditivae

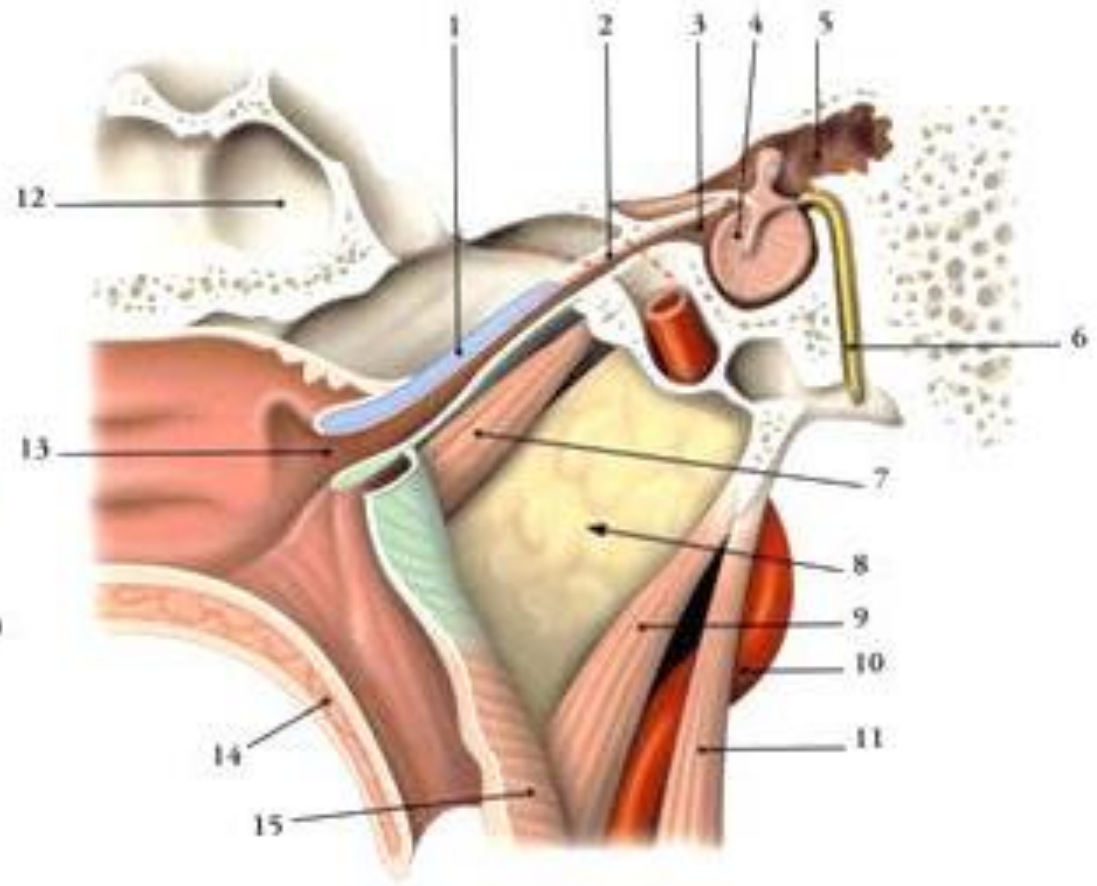
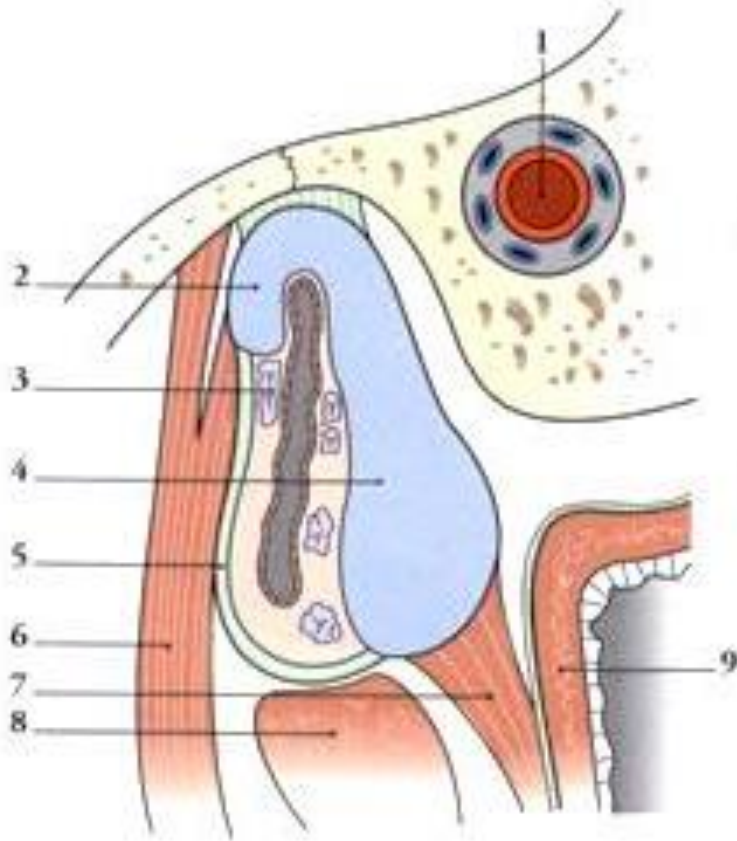
torus tubarius

lymph tissue (tonsilla tubaria)



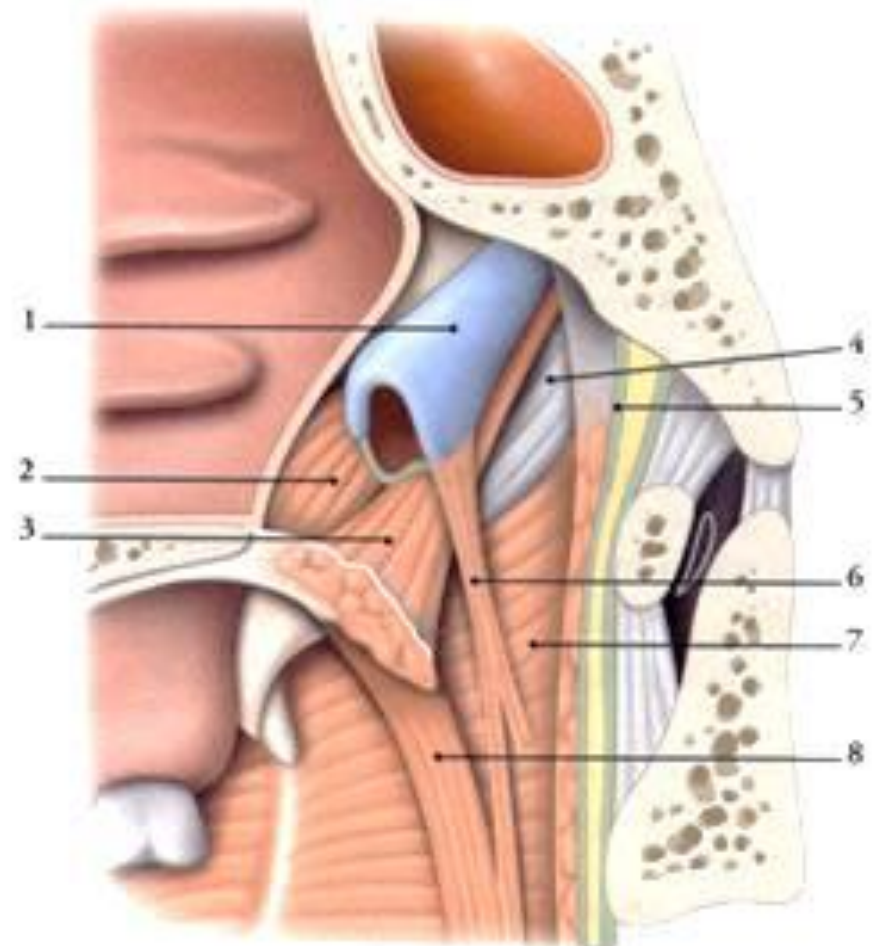
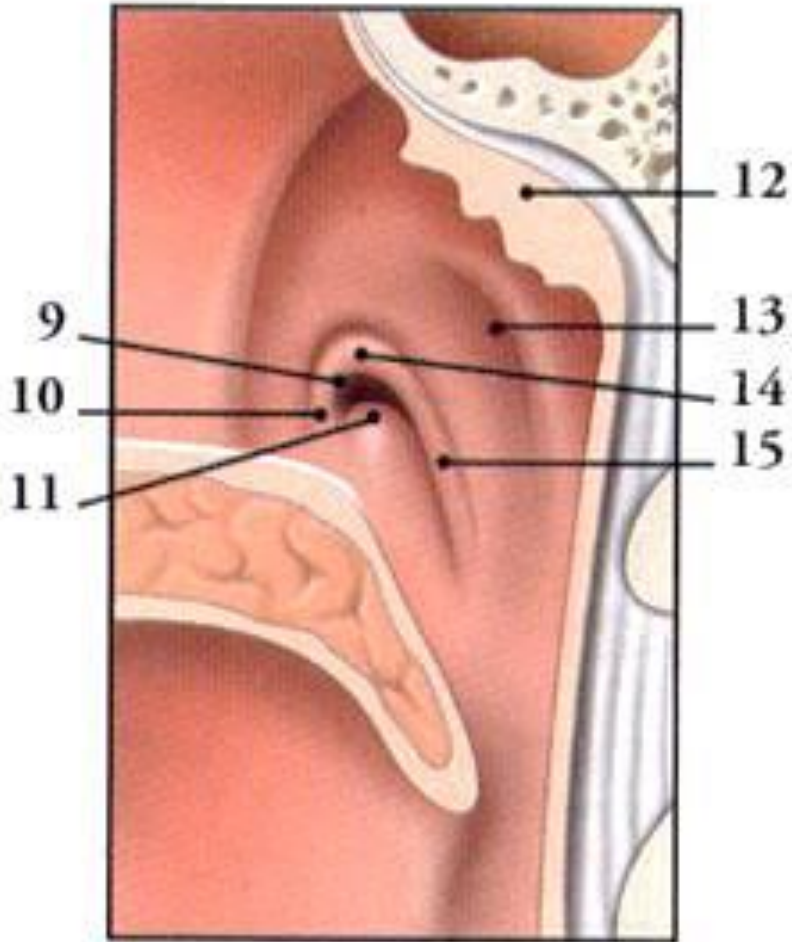


TUBA AUDITIVA, EUSTACHIAN TUBE

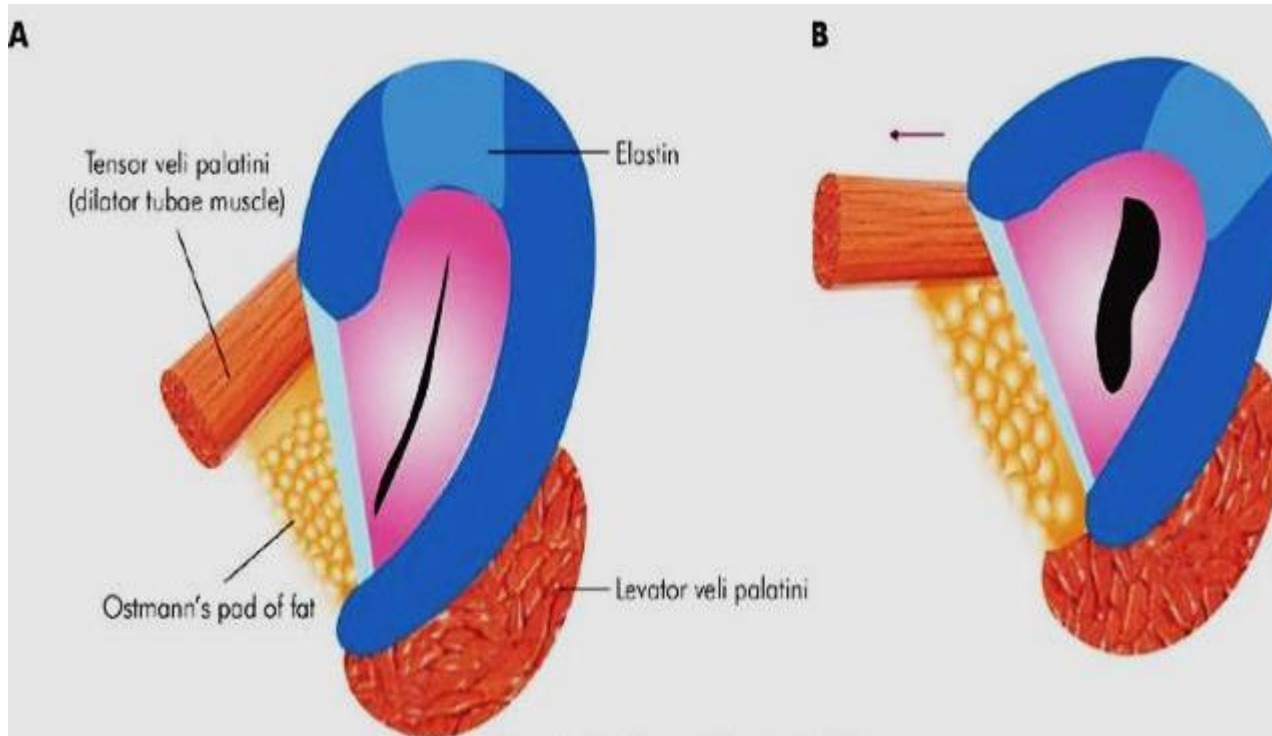


- 1- a. carotis int.;
- 2-lamina lateralis et 4-medialis;
- 6 – m. tensor veli palatini;
- 7- m. salpingopharyngeus;
- 8-m. levator veli palatini;
- 9-nasopharynx;

TORUS TUBARIUS, torus levatorius, plica salpingopharyngea

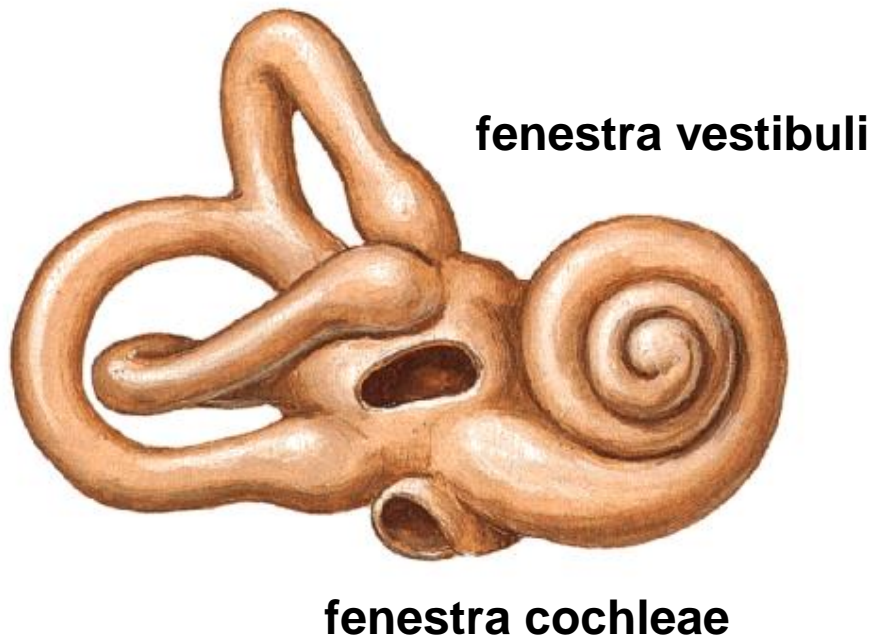


2- m. tensor v.p.; 3- m.levator v.p;
6- m. salpingopharyngeus



AURIS INTERNA - LABYRINTHUS OSSEUS

Right Osseous Labyrinth
Anterolateral View



- vestibulum

-canales semicirculares ossei

anterior

posterior

crus communae

ampulla ossea

lateralis

crus simplex

- cochlea

COCHLEA

modiolus

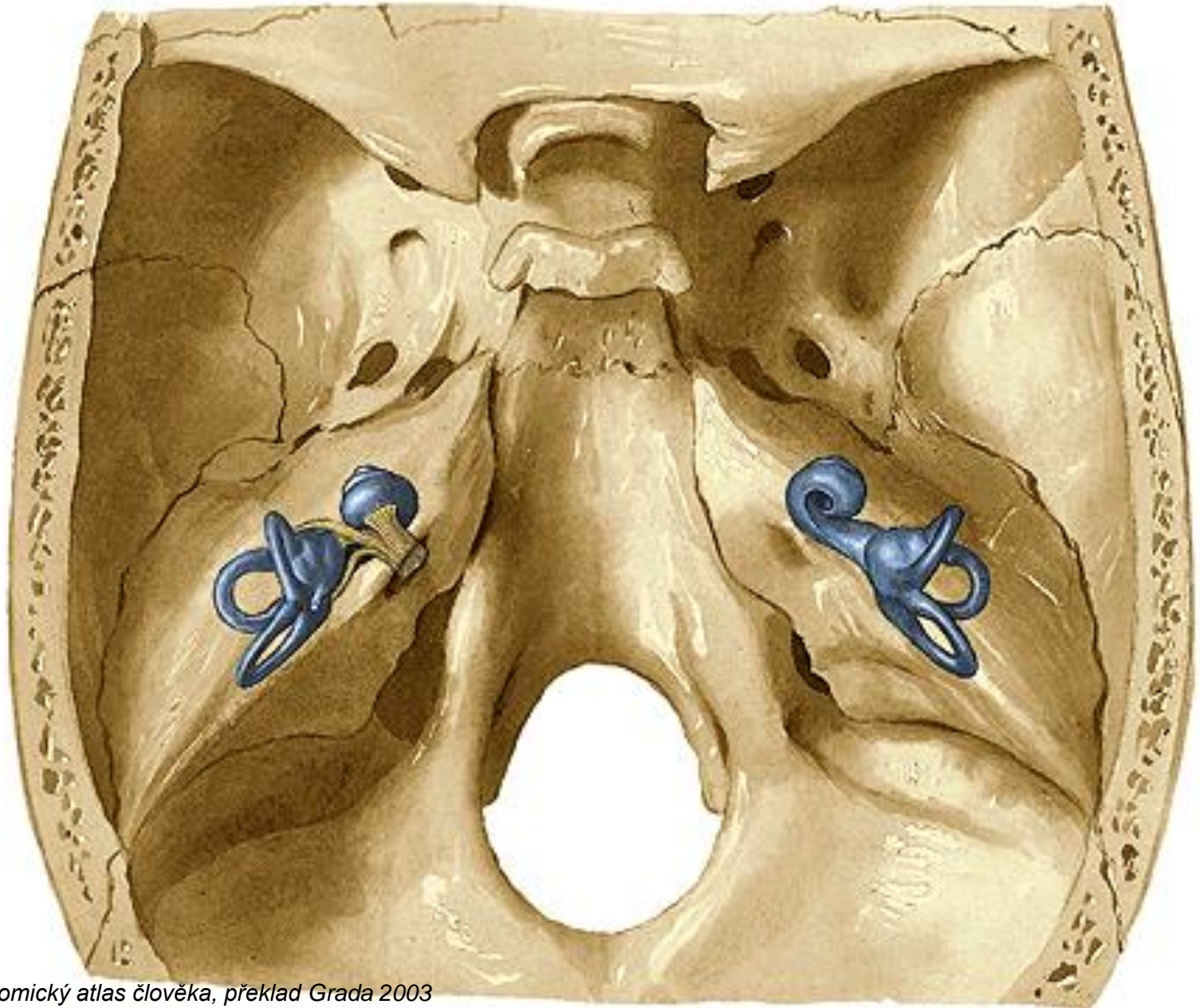
lamina spiralis ossea

canalis spiralis osseus

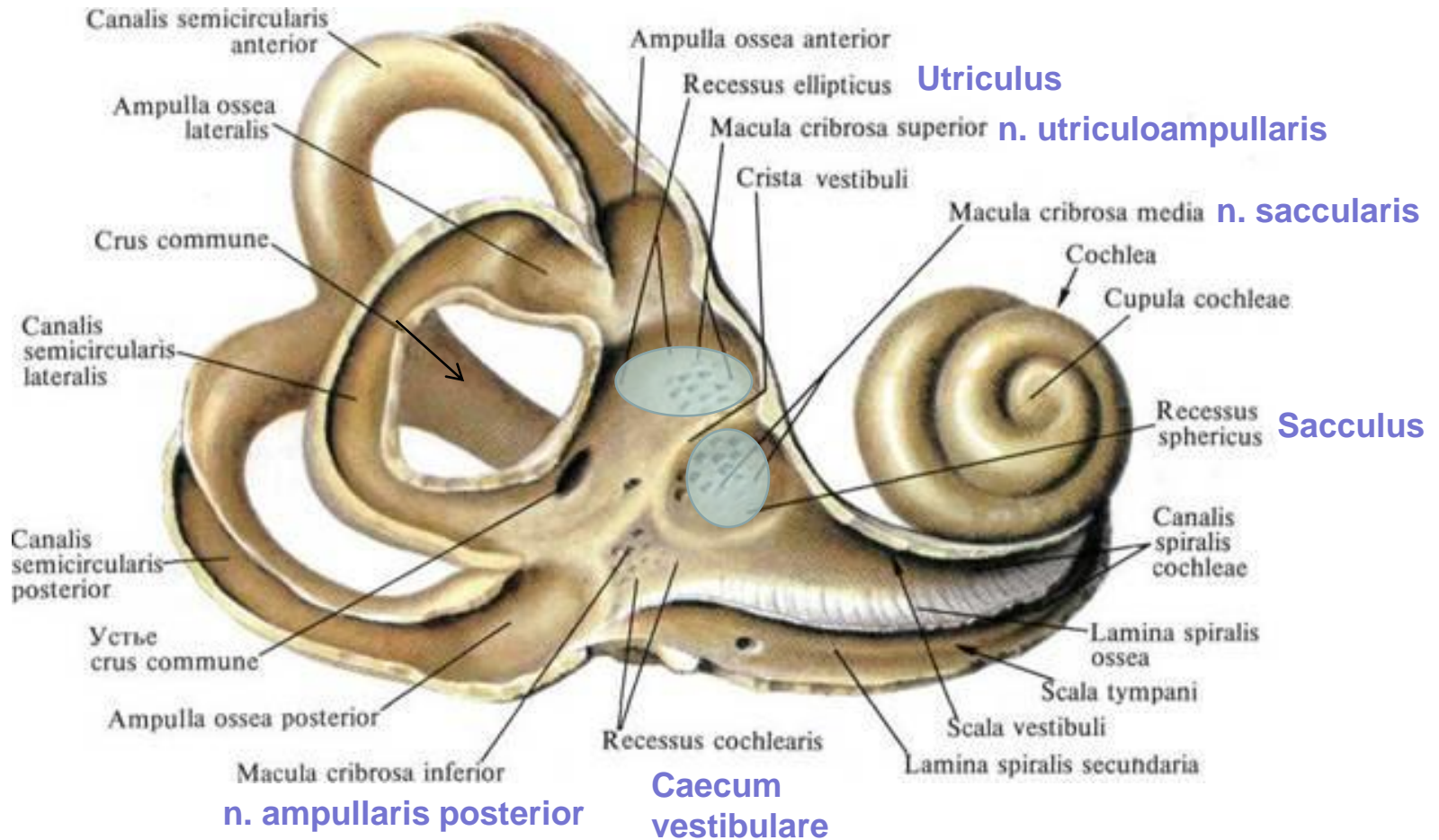
canales longitudinales

tractus spiralis foraminosus

AURIS INTERNA



VESTIBULUM



LABYRINTHUS MEMBRANACEUS

labyrinthus vestibularis

- utriculus et sacculus
- d. utriculosaccularis → d. endolymphaticus (aqueductus vestibuli) → saccus endolymph.
- ductus semicirculares

macula statica utriculi et sacculi

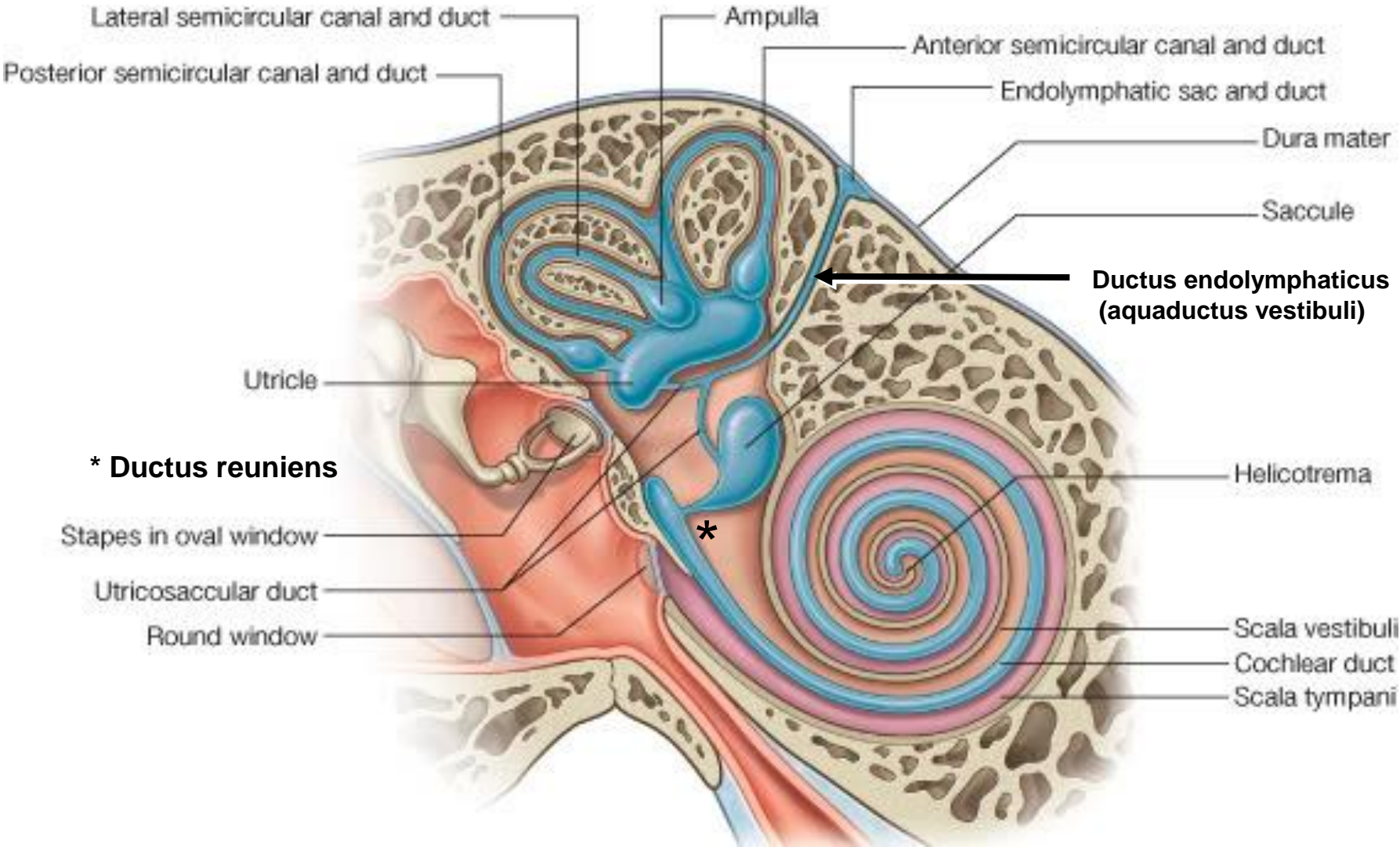
cristae ampullares

labyrinthus cochlearis

- ductus cochlearis *lamina basilaris*
 membrana vestibularis Reissneri
 wall of bony canal

organum spirale Corti membrana tectoria

LABYRINTHUS MEMBRANACEUS



LABYRINTHUS MEMBRANACEUS

Saccus endolymphaticus (*fossa subarcuata*)

Ductus endolymphaticus
(aqueductus vestibuli)

ant.

Ductus semicircularis

post.

lat.

Ductus cochlearis

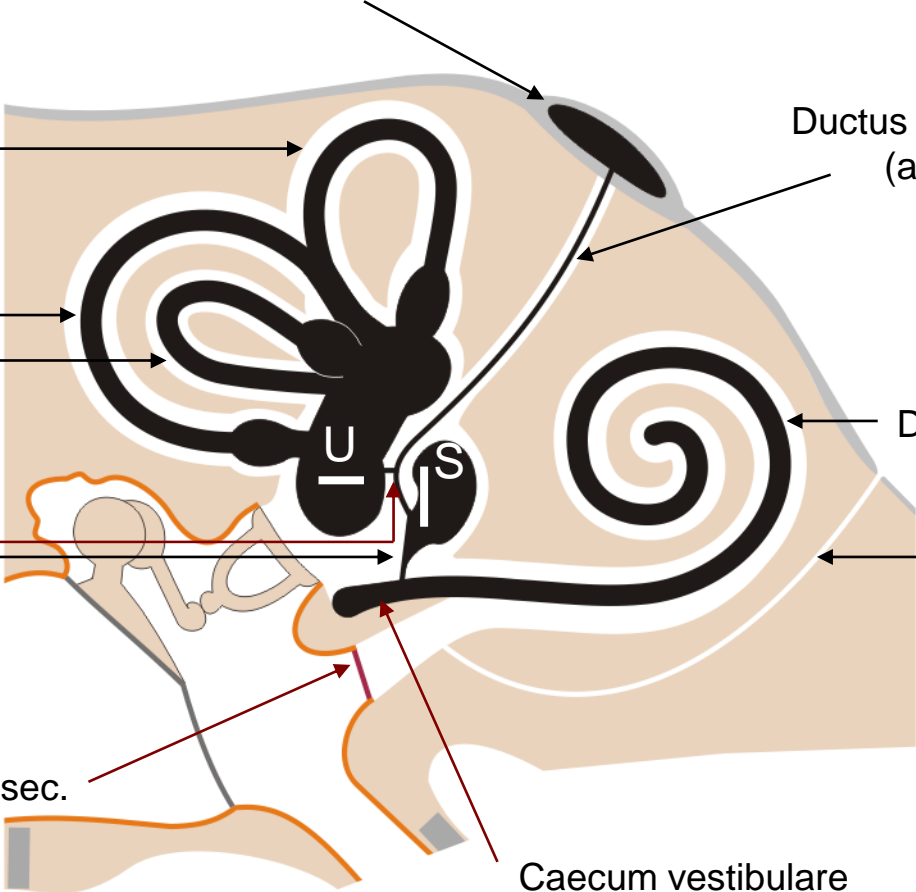
Ductus utriculosaccularis

Ductus reuniens

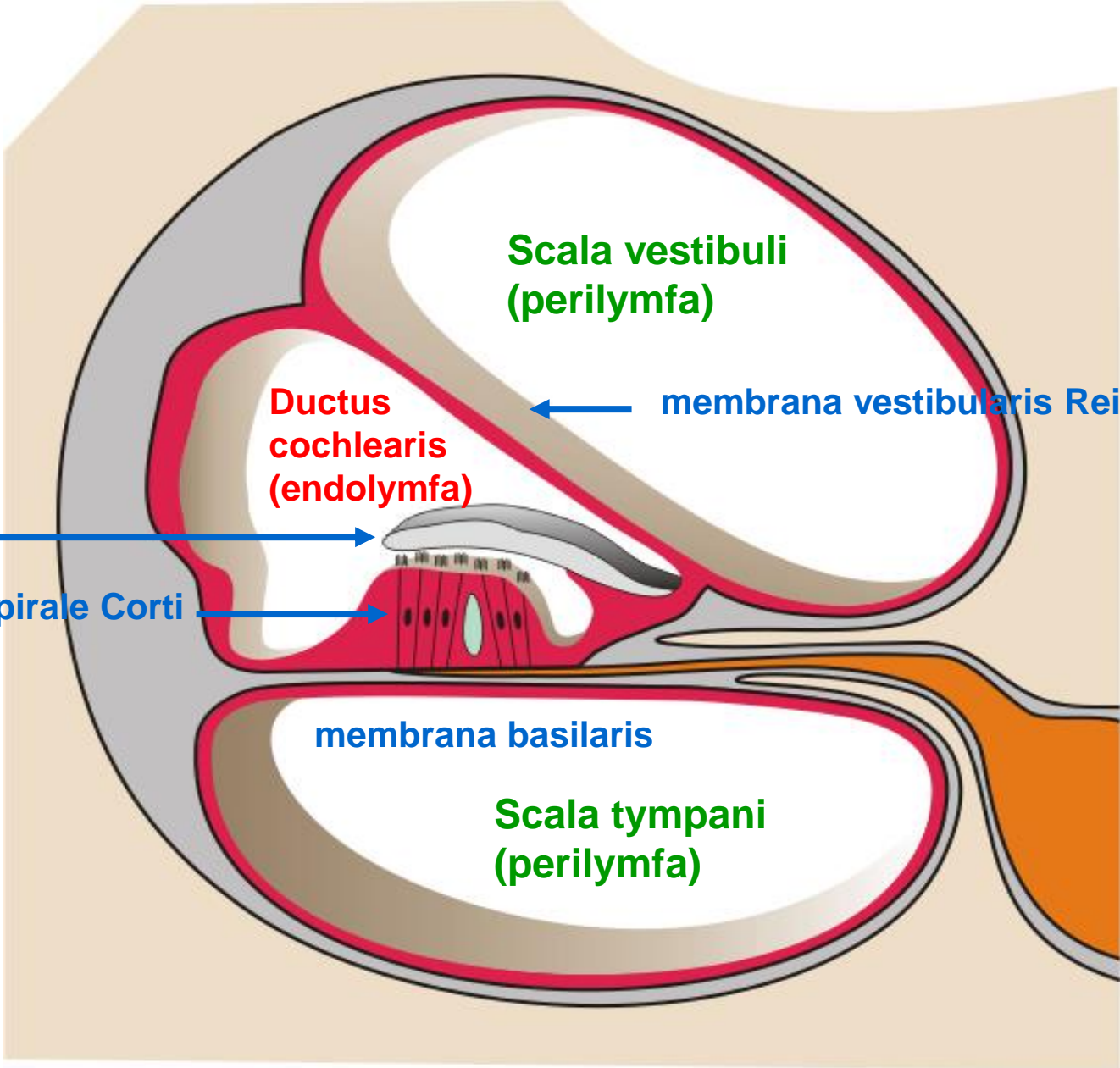
Canaliculus cochleae
(*apertura externa
canaliculi cochlae*)

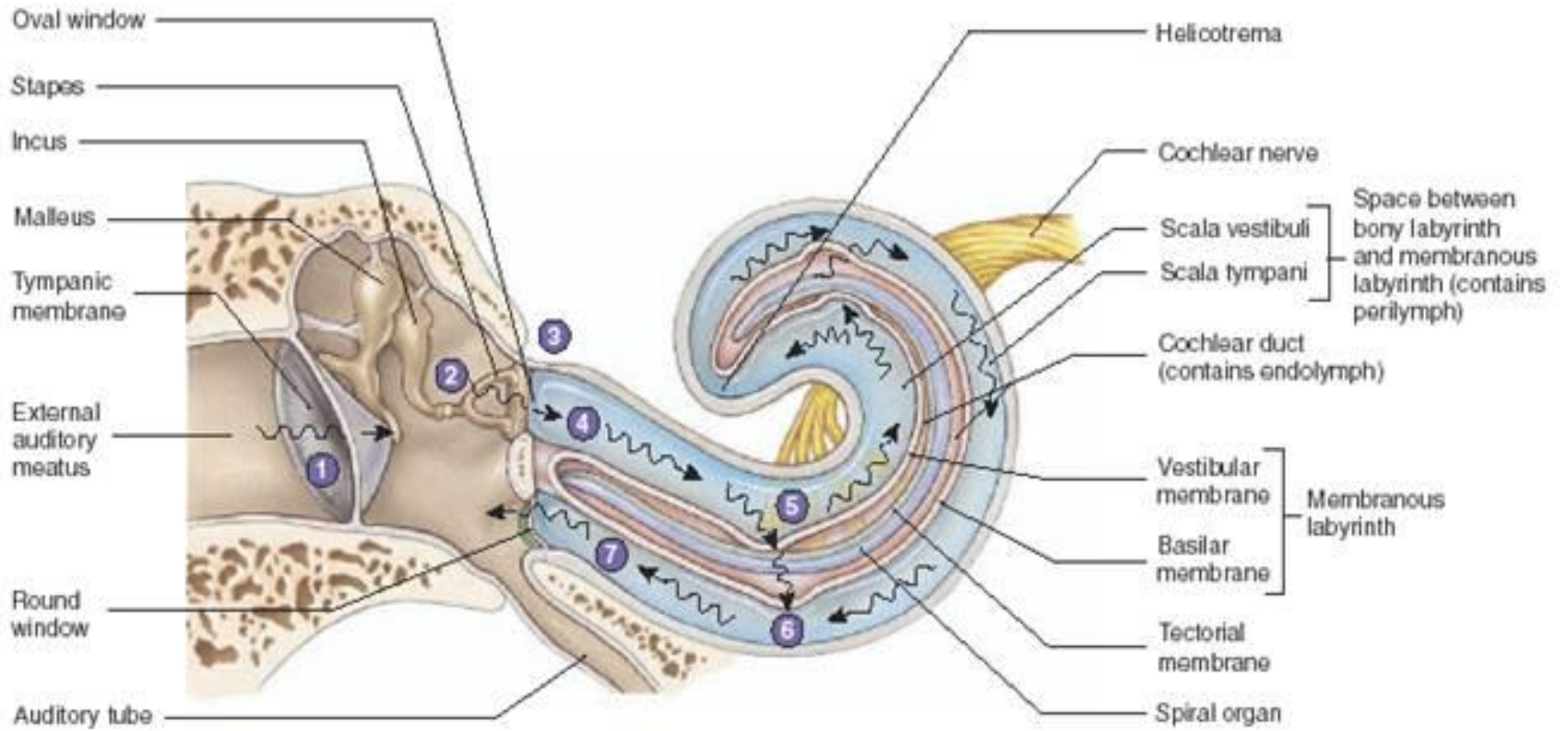
Membrana tympani sec.

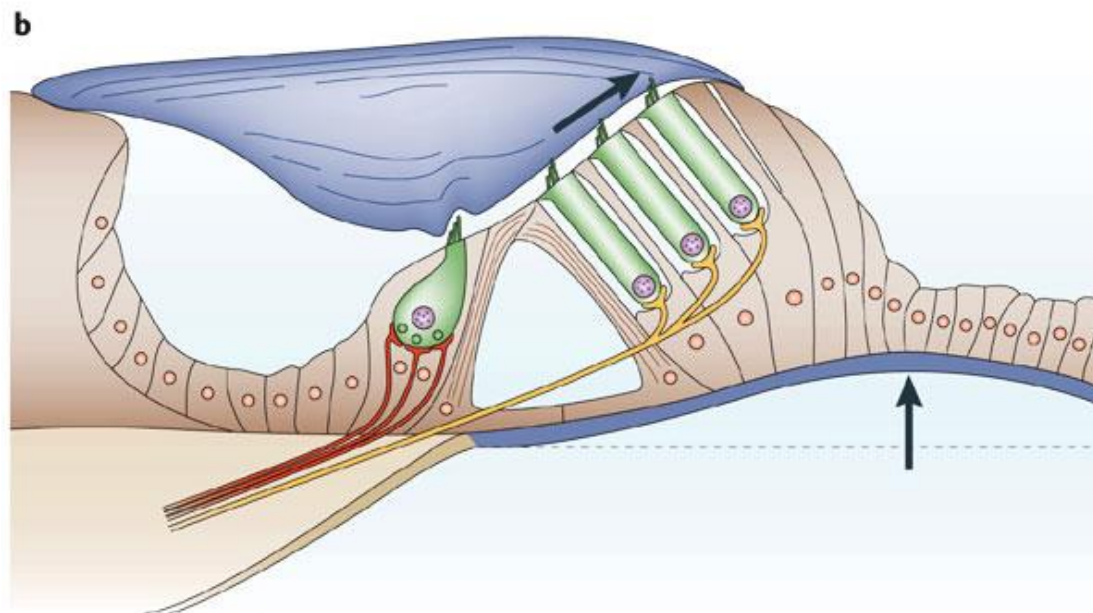
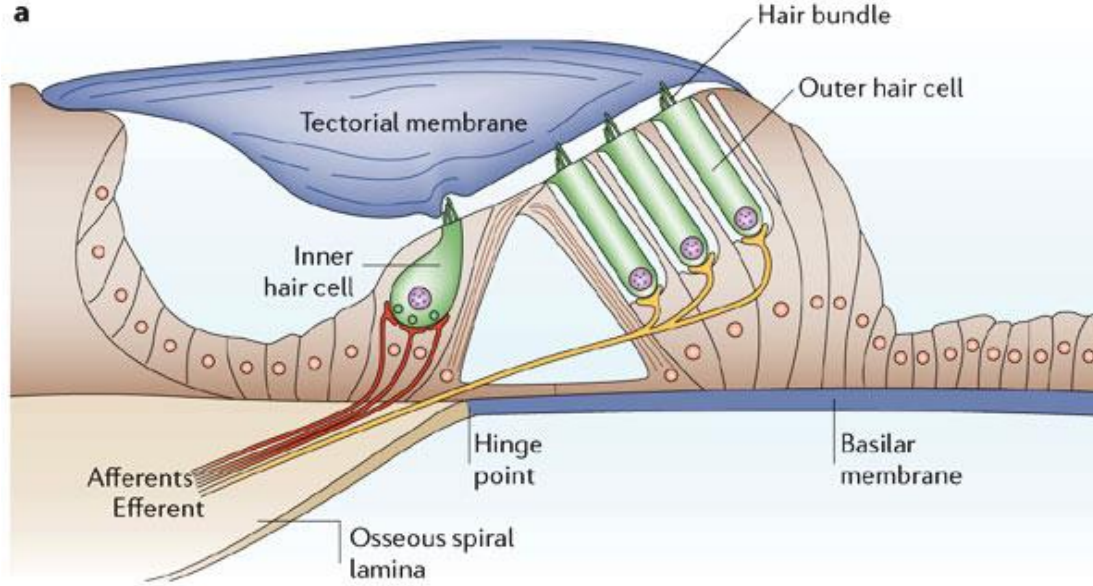
Caecum vestibulare



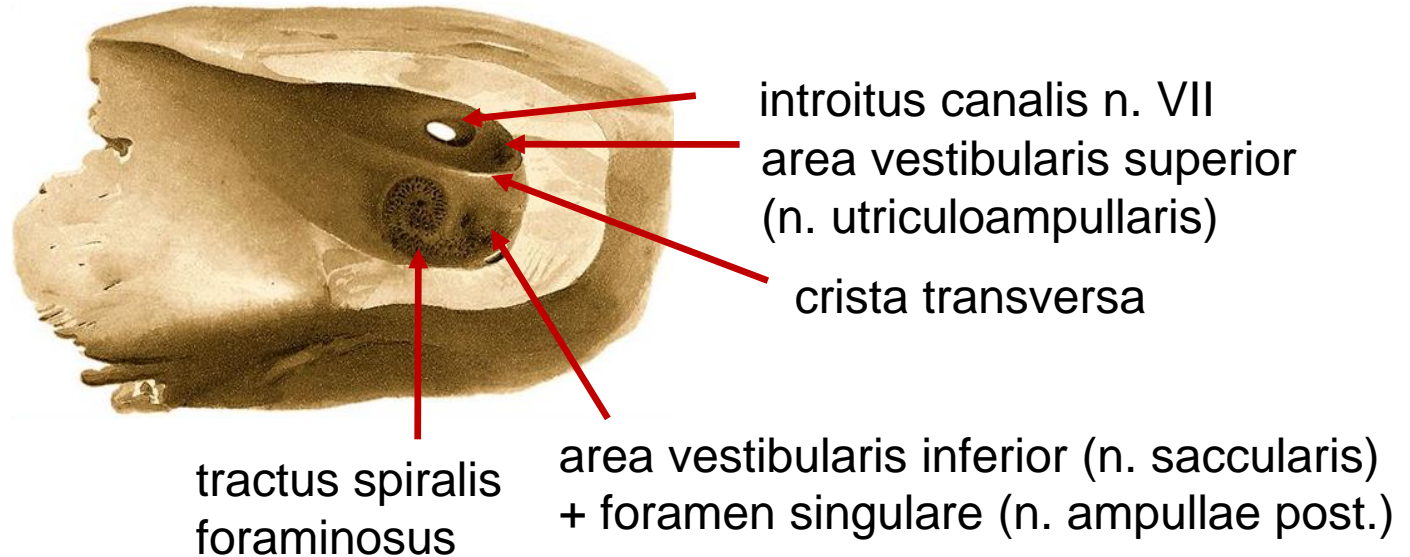
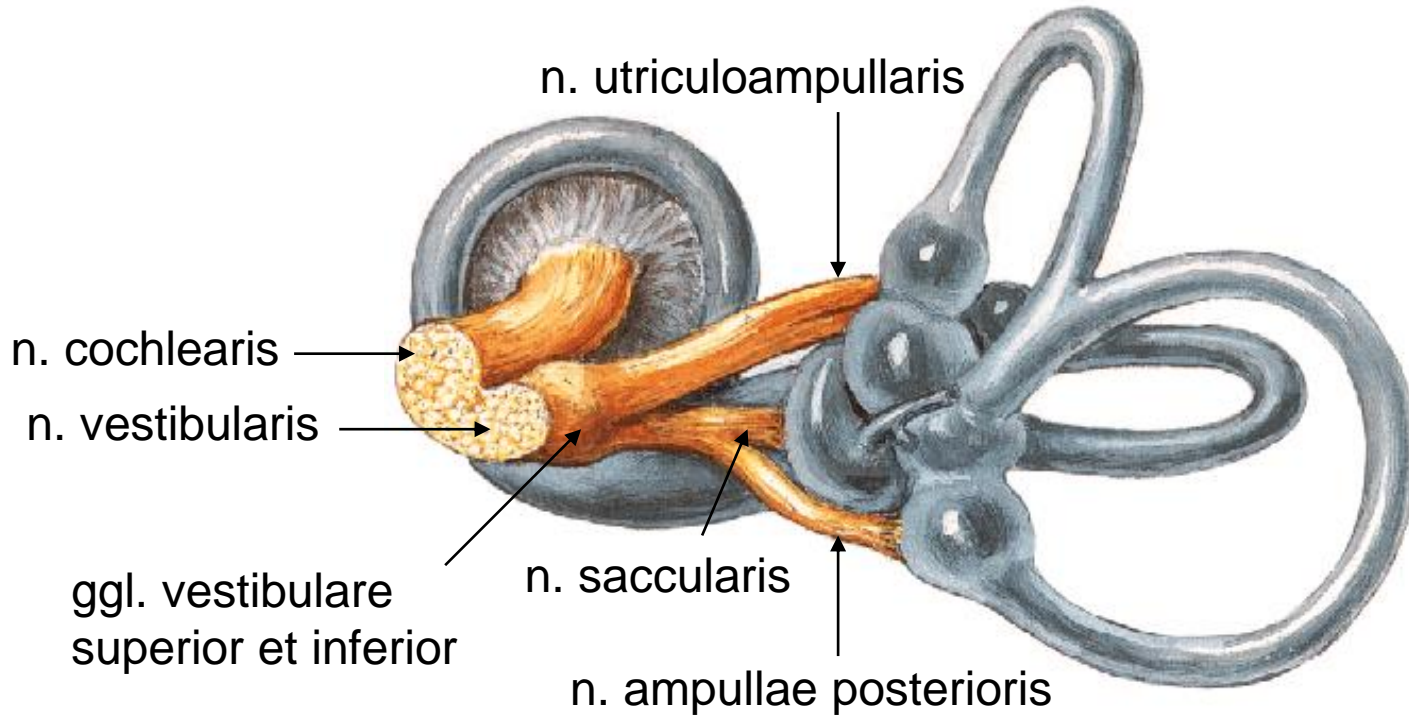
DUCTUS COCHLEARIS

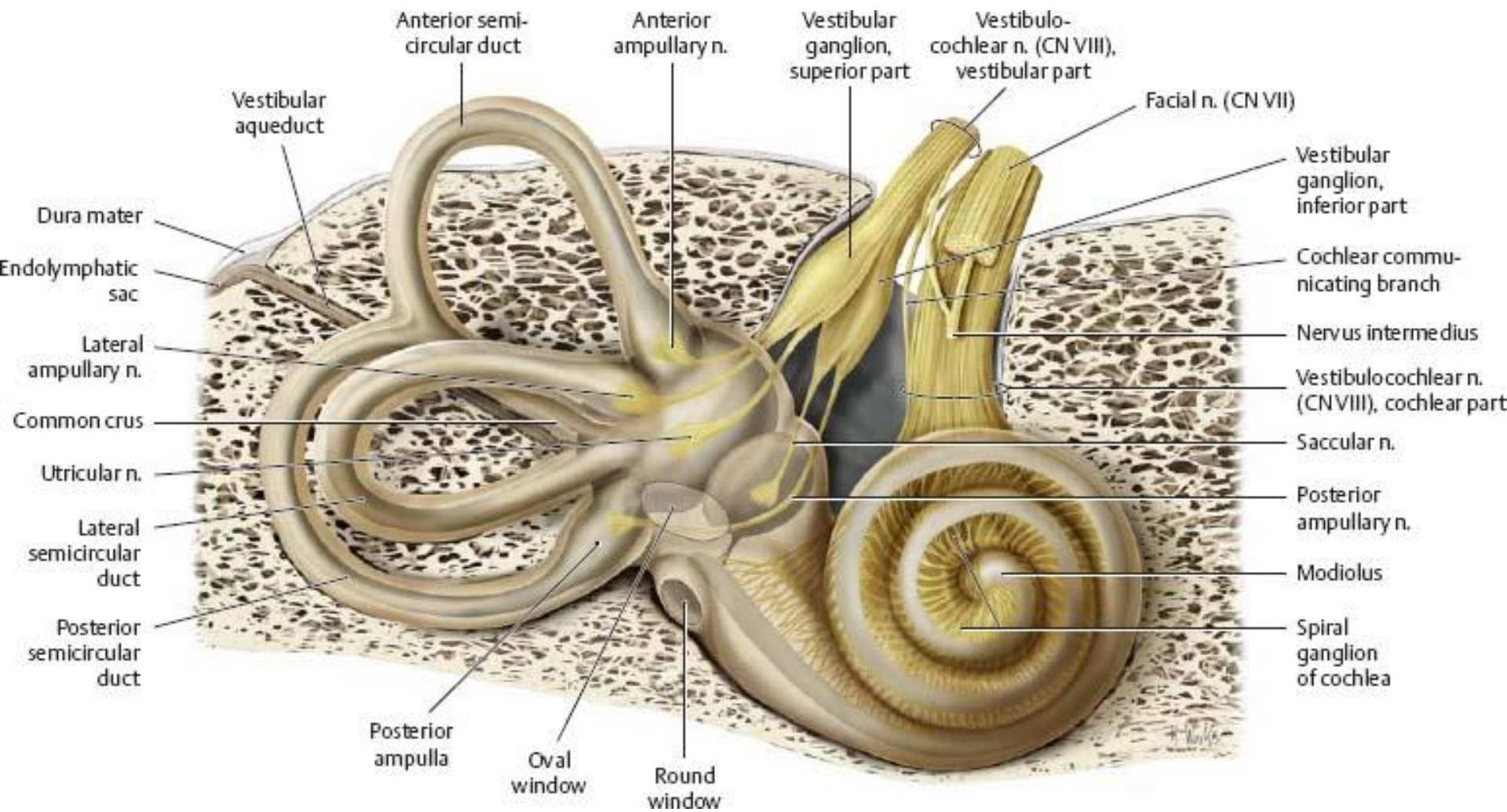






NERVUS VESTIBULOCOCHLEARIS





Fundus meatus acustici interni

