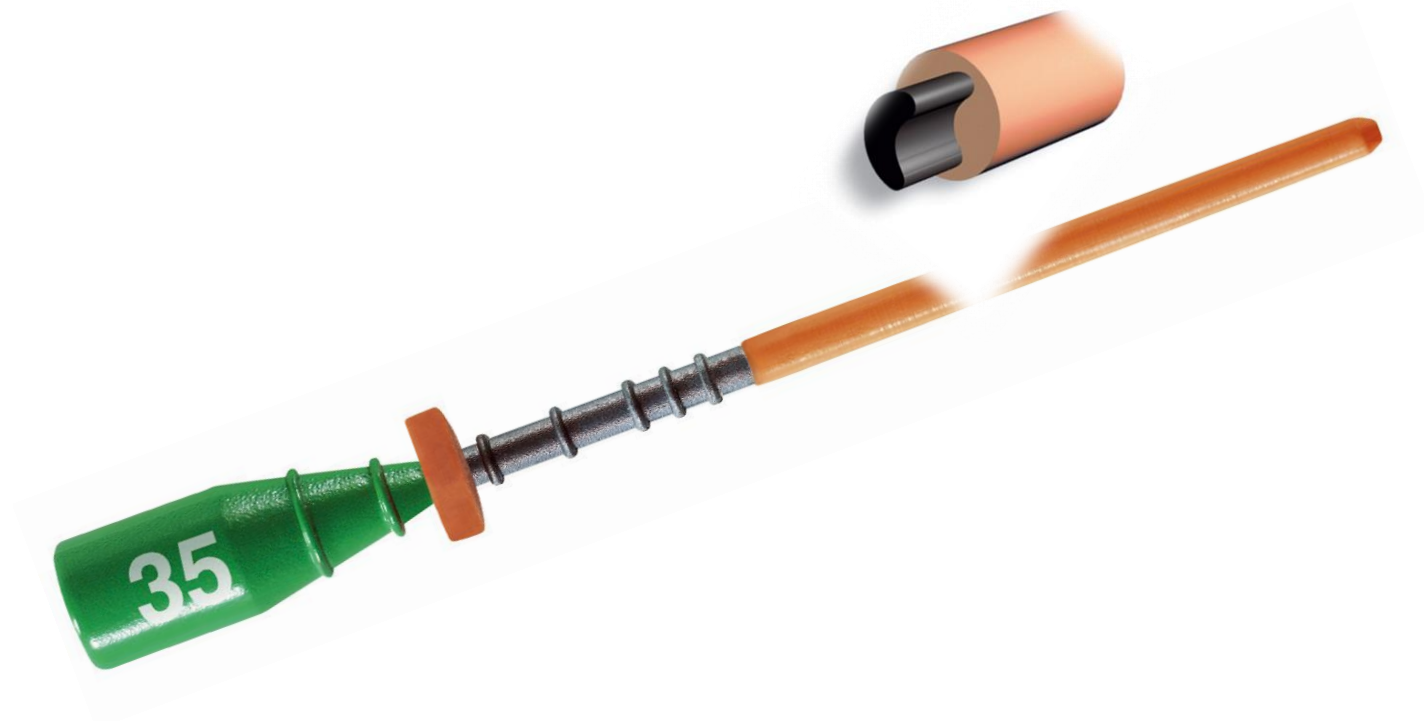


THERMAFIL[®]

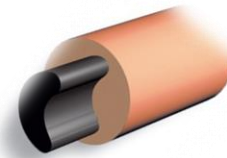
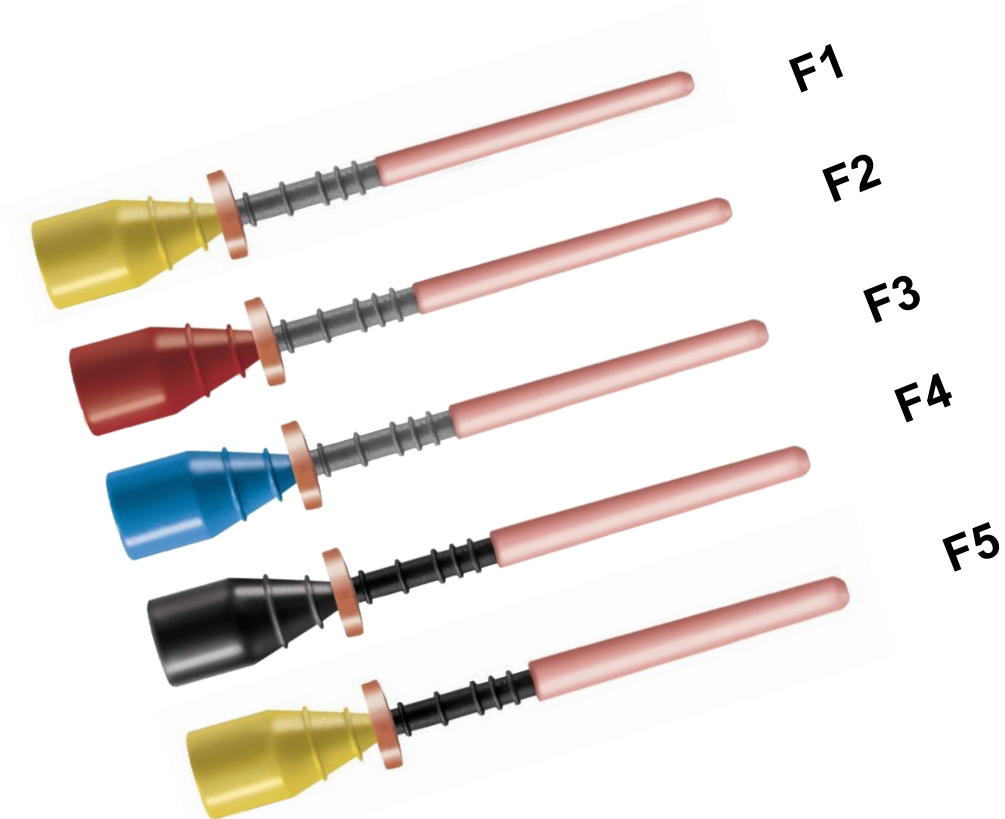
Core-Carrier (PP) - Gutta-Percha
Filling Technique

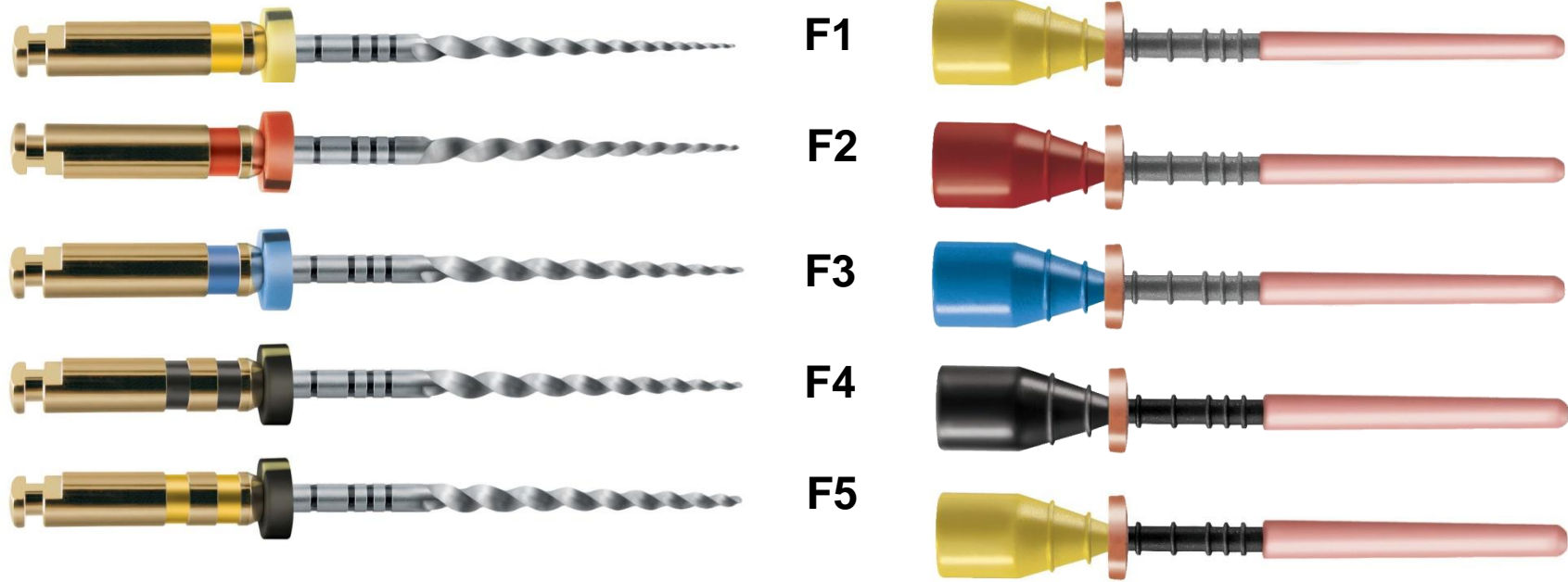




Obturators PROTAPER

Core-Carrier Gutta-Percha Filling Technique





F1

F2

F3

F4

F5

Obturators - Protaper sizes

F1

F2

F3

F4

F5

Paper points - Protaper sizes

ProTaper Obturator calibrated to each Finishing File



F1

F2

F3

F4

F5

3D Filling of the Root-Canal System with THERMAFIL Or PROTAPER OBTURATOR



Thermaprep Oven



Size verifier to measure the apical size



Thermacut bur



Post space bur

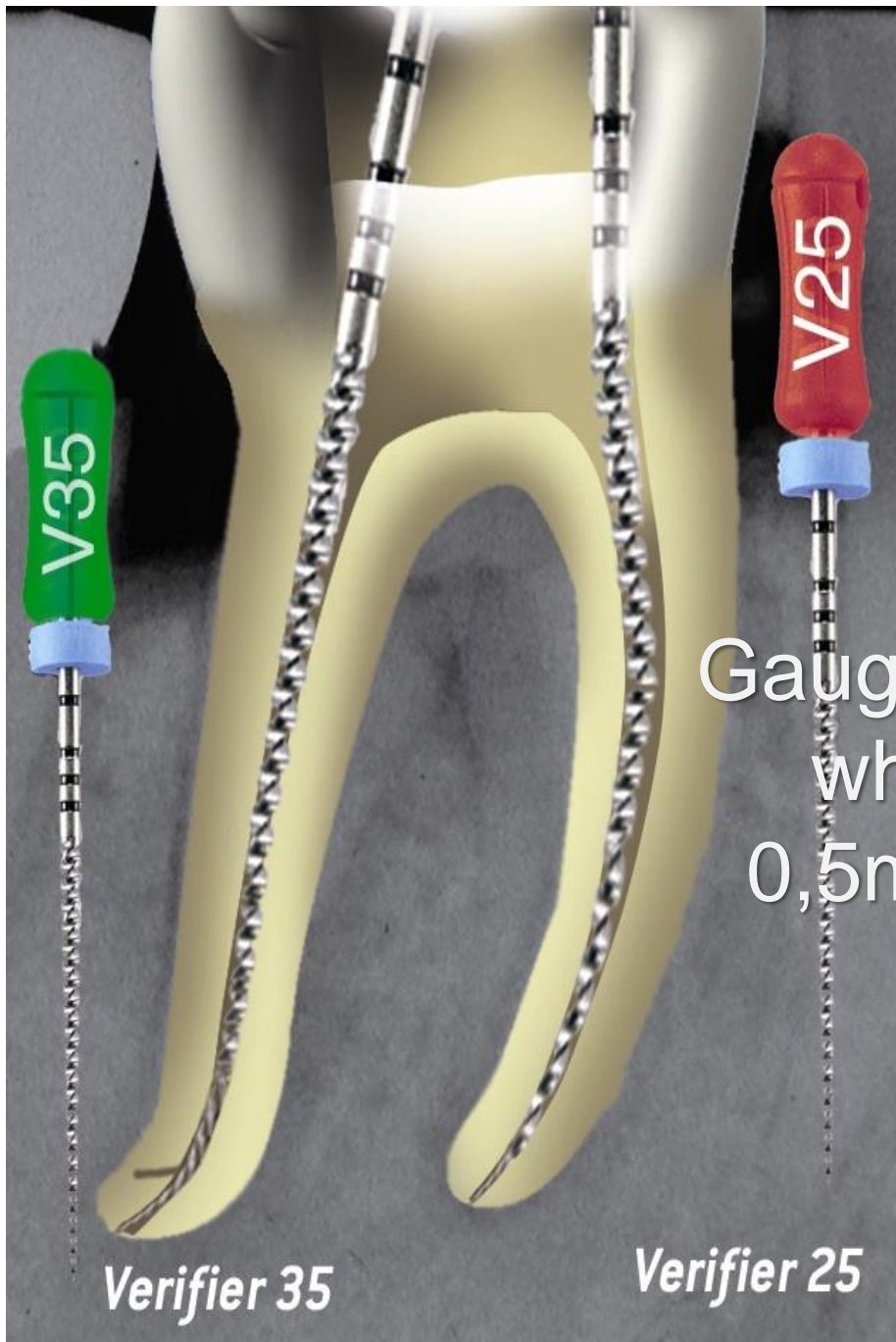
Core-Carrier Obturator Technique



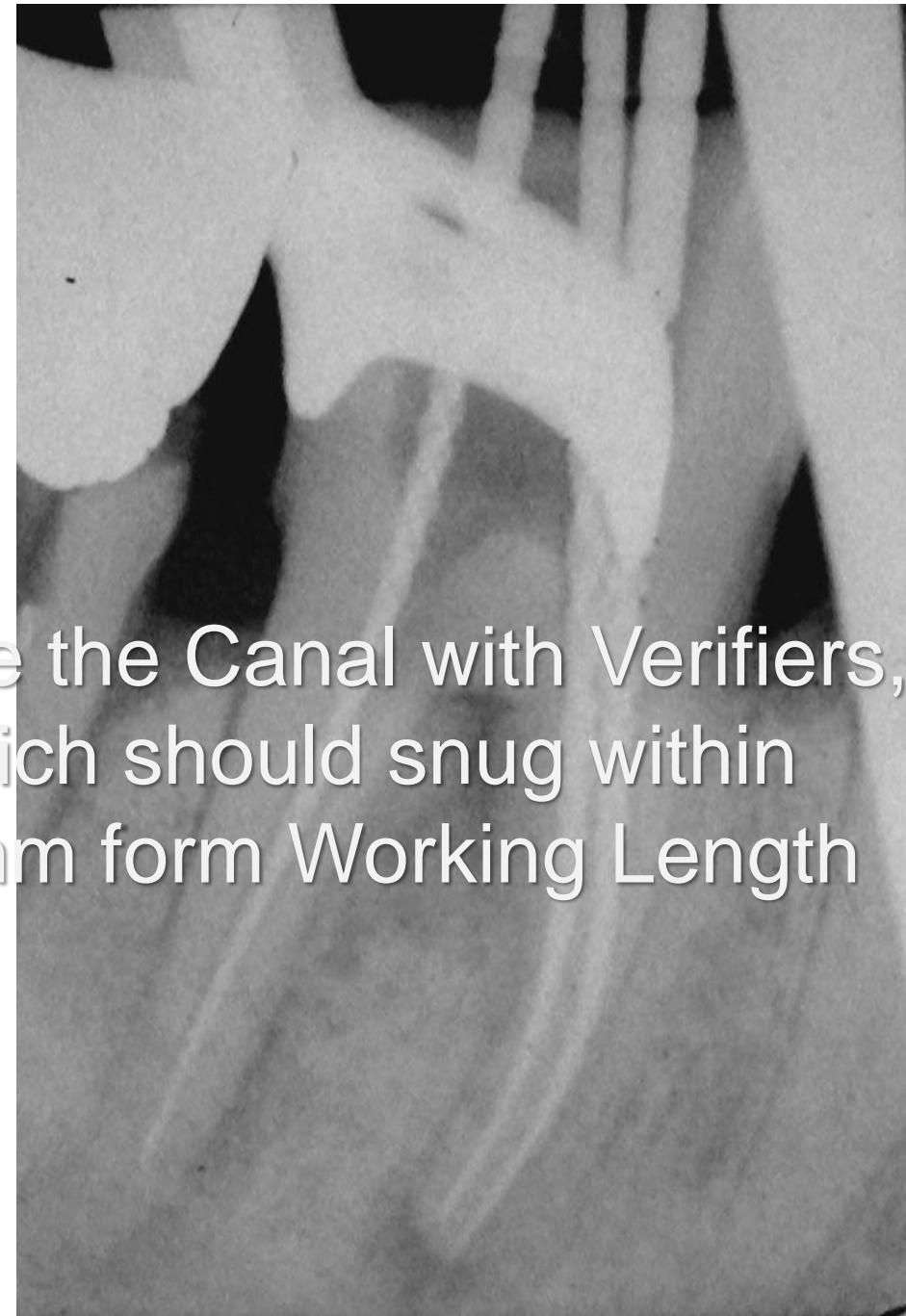
1st step :

Opening
cleaning

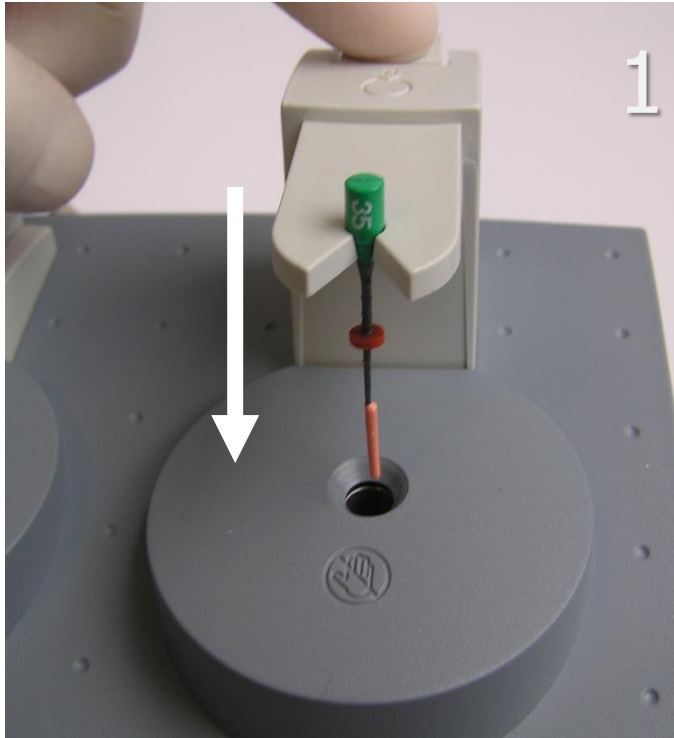
Shaping ...



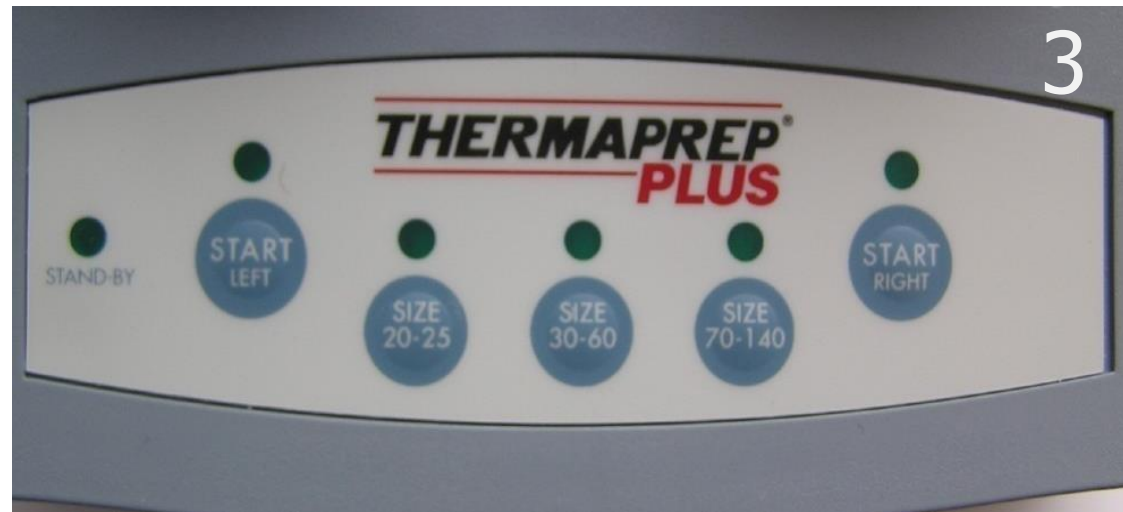
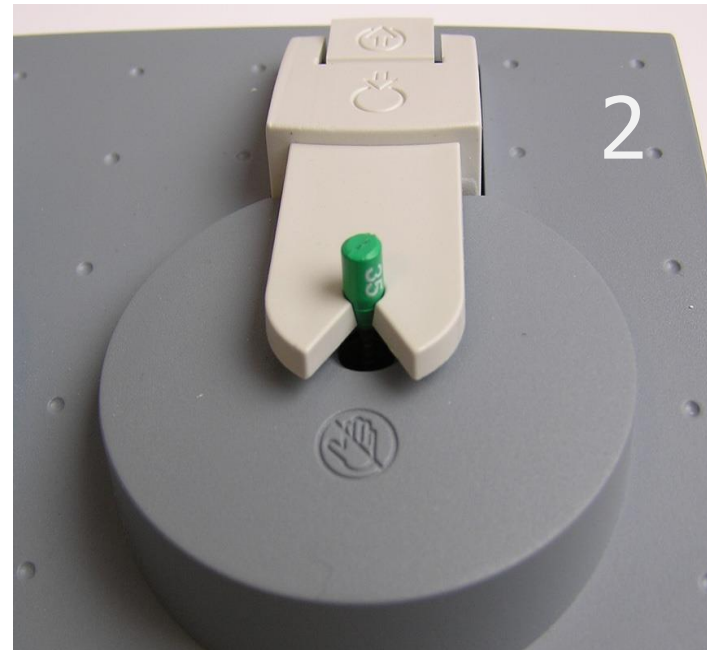
Gauge the Canal with Verifiers,
which should snug within
0,5mm from Working Length



Place the Obturators

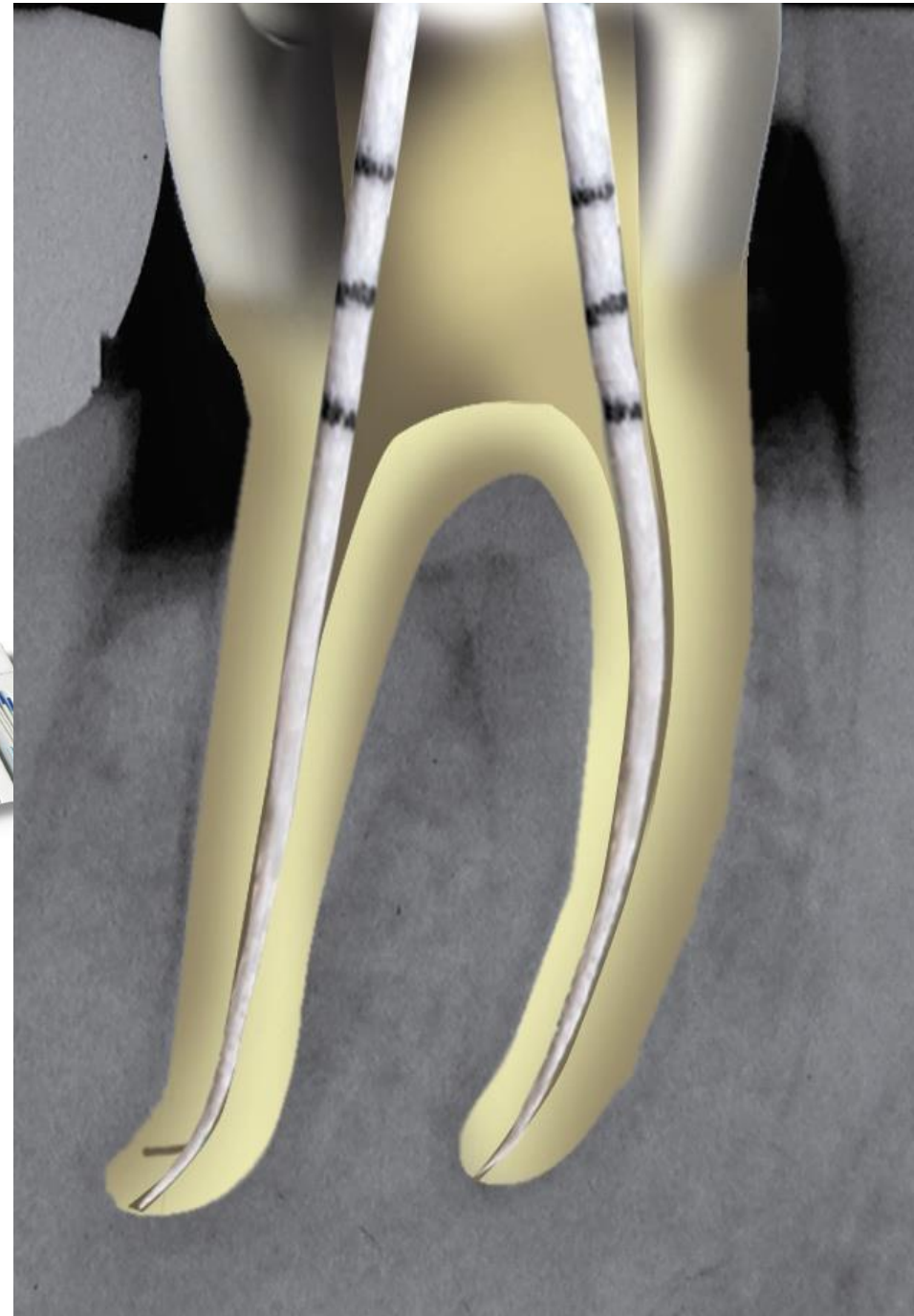


Heat The
Obturator



Select the right
size and start

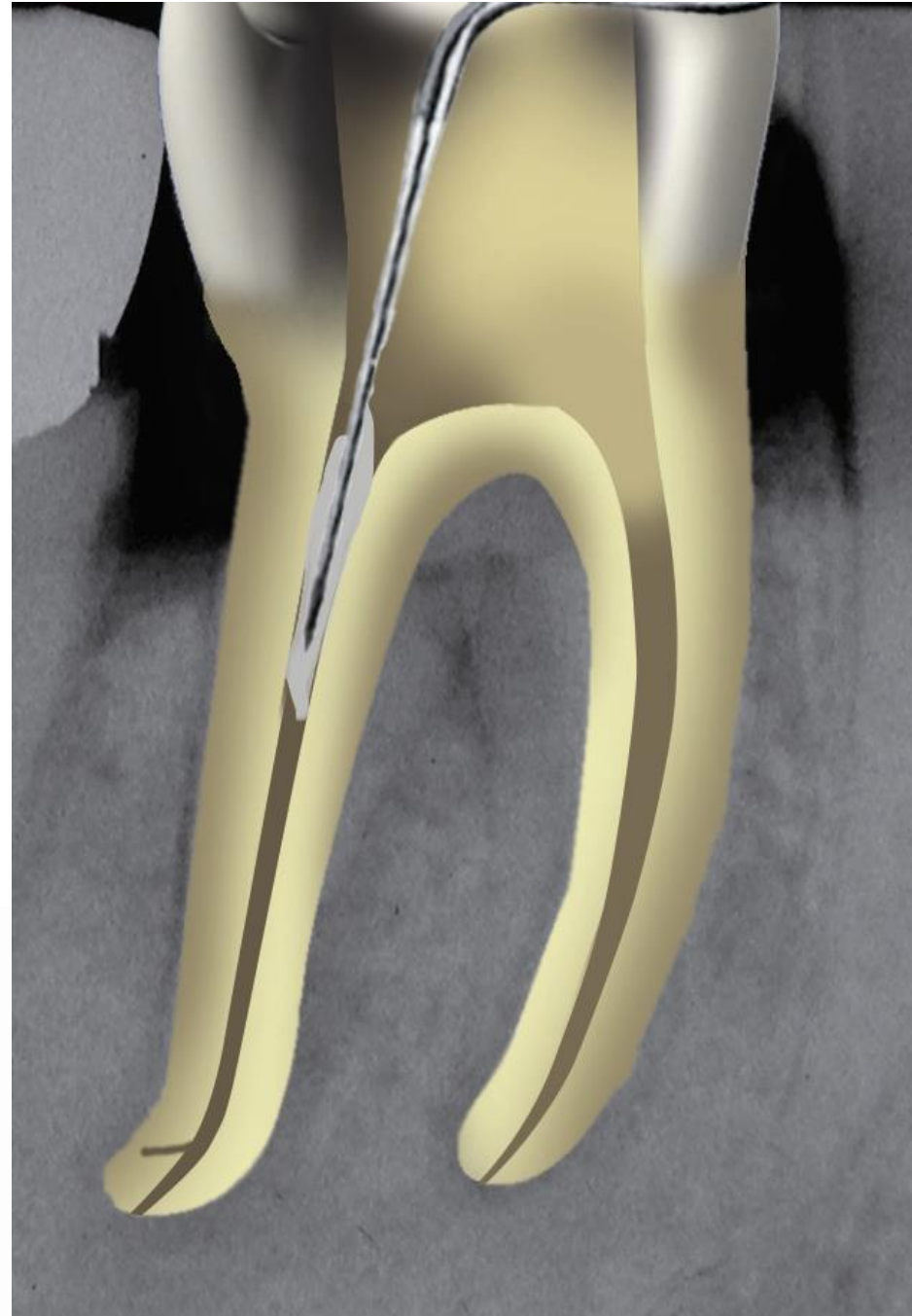
Dry the Canals with Sterile Paper Points

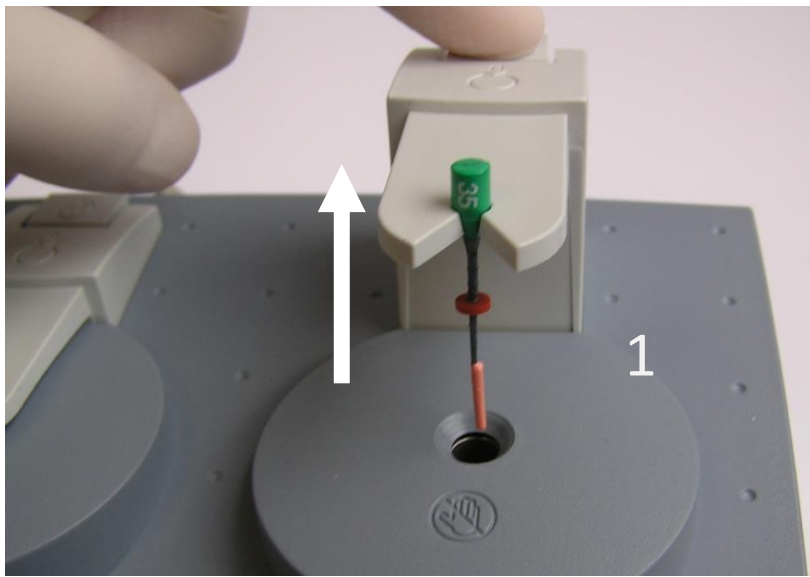


**Mix the Sealer and coat
thewalls of the canal with a
thin layer using a Probe or a
paper point**

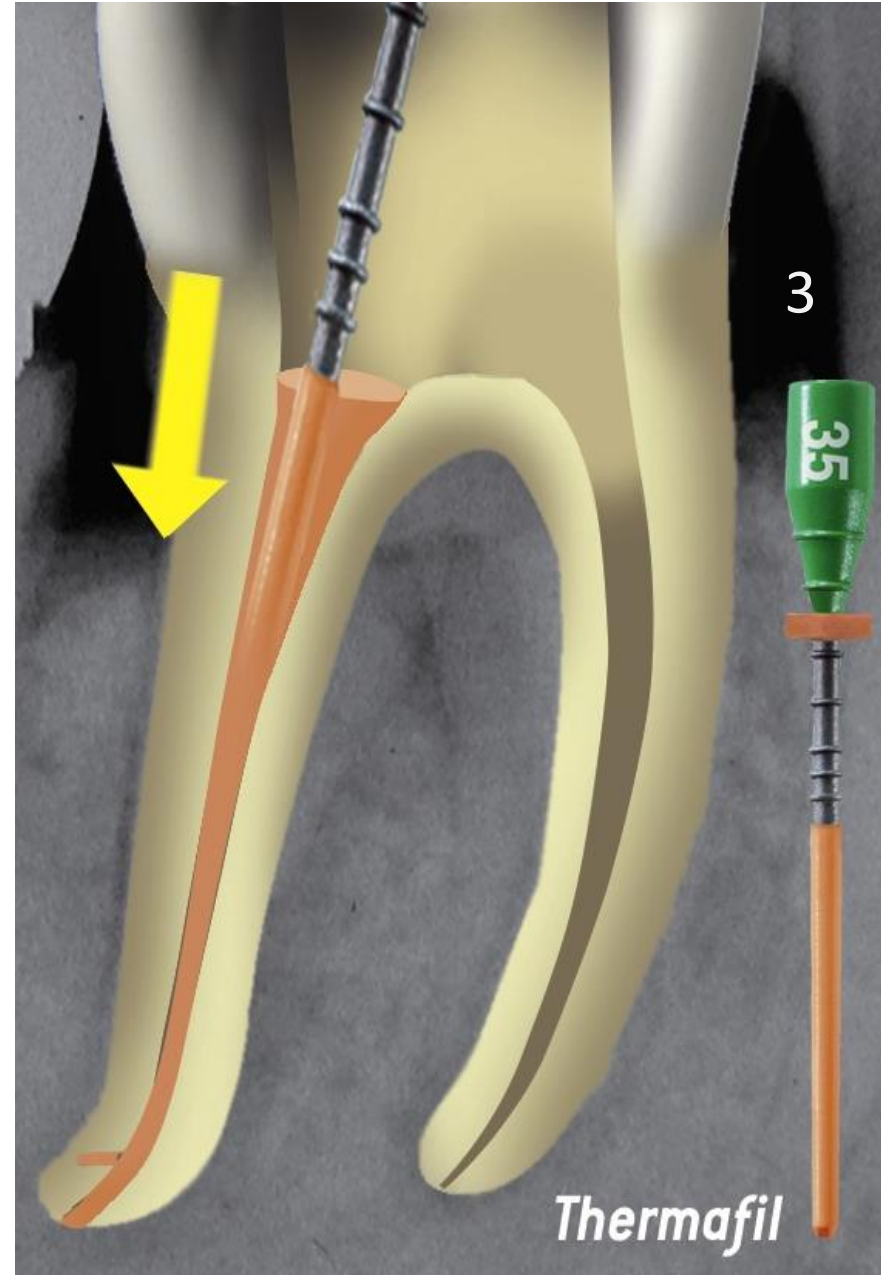
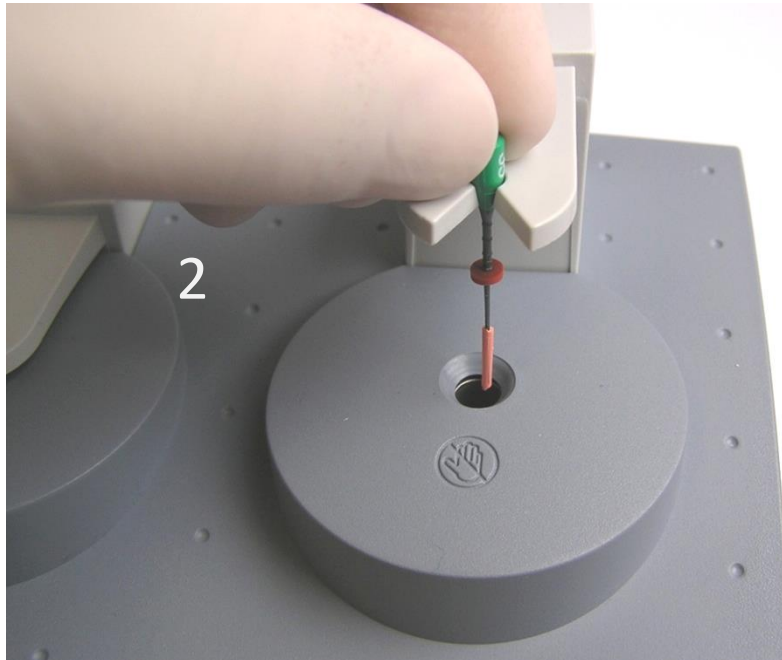


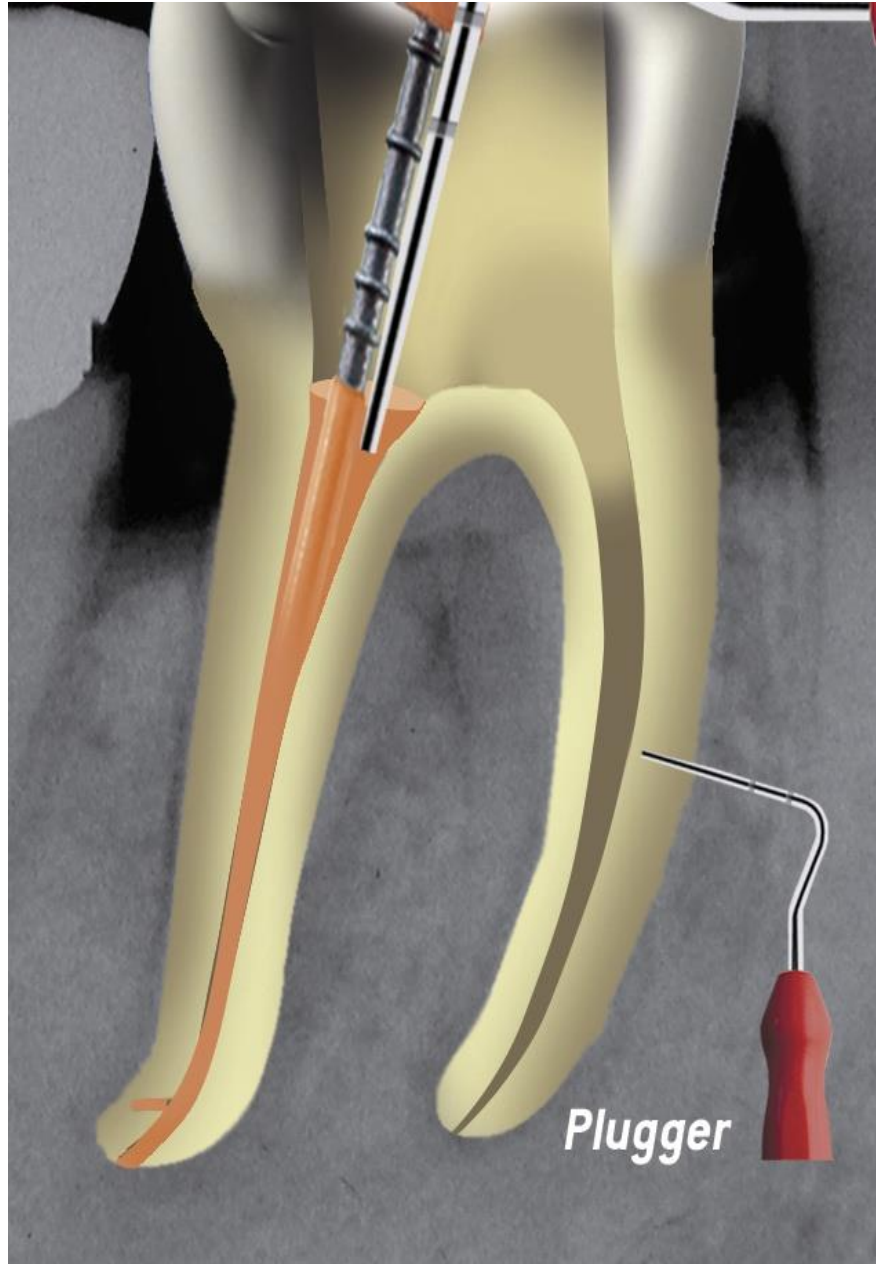
Topseal MIX



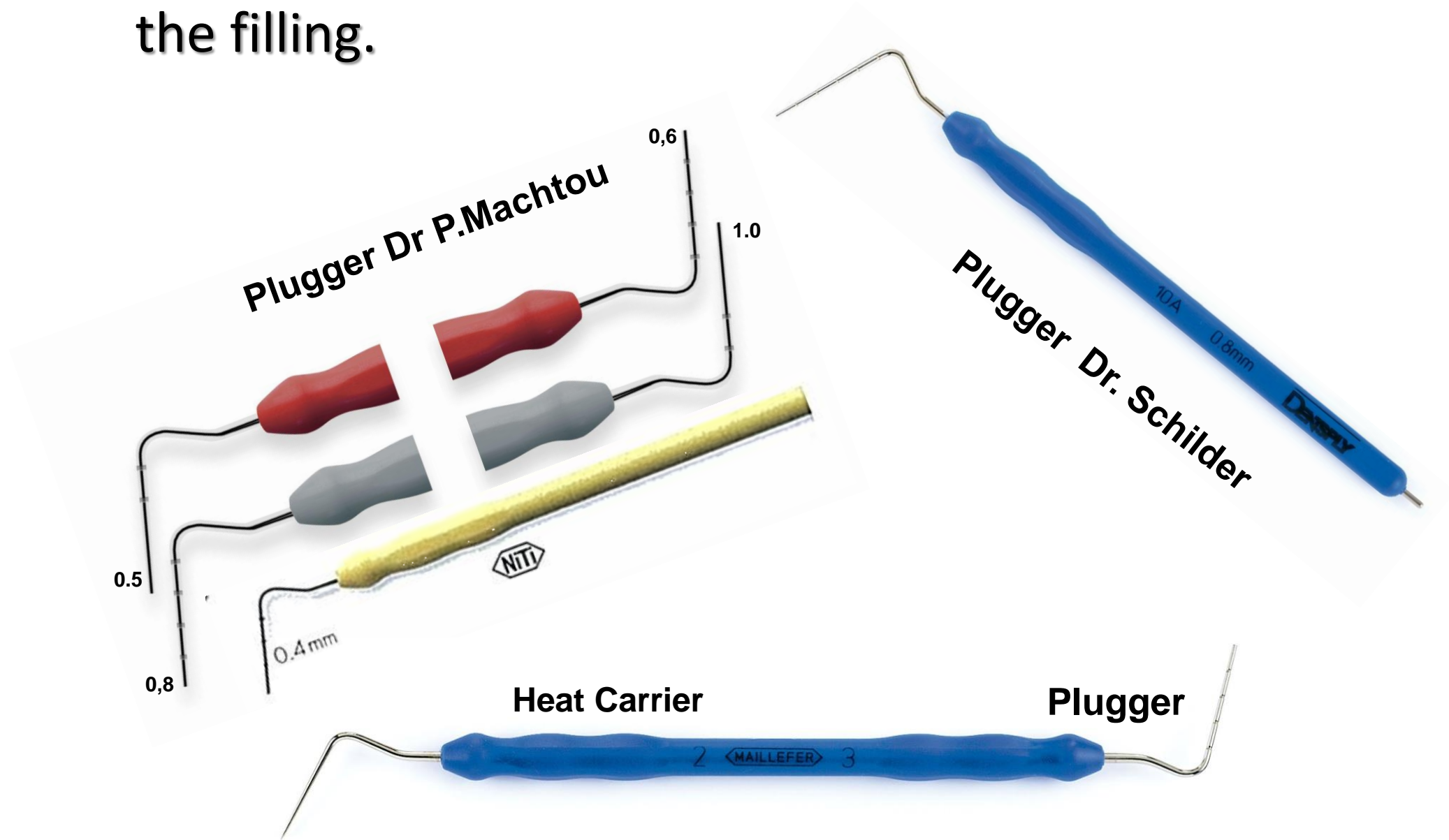


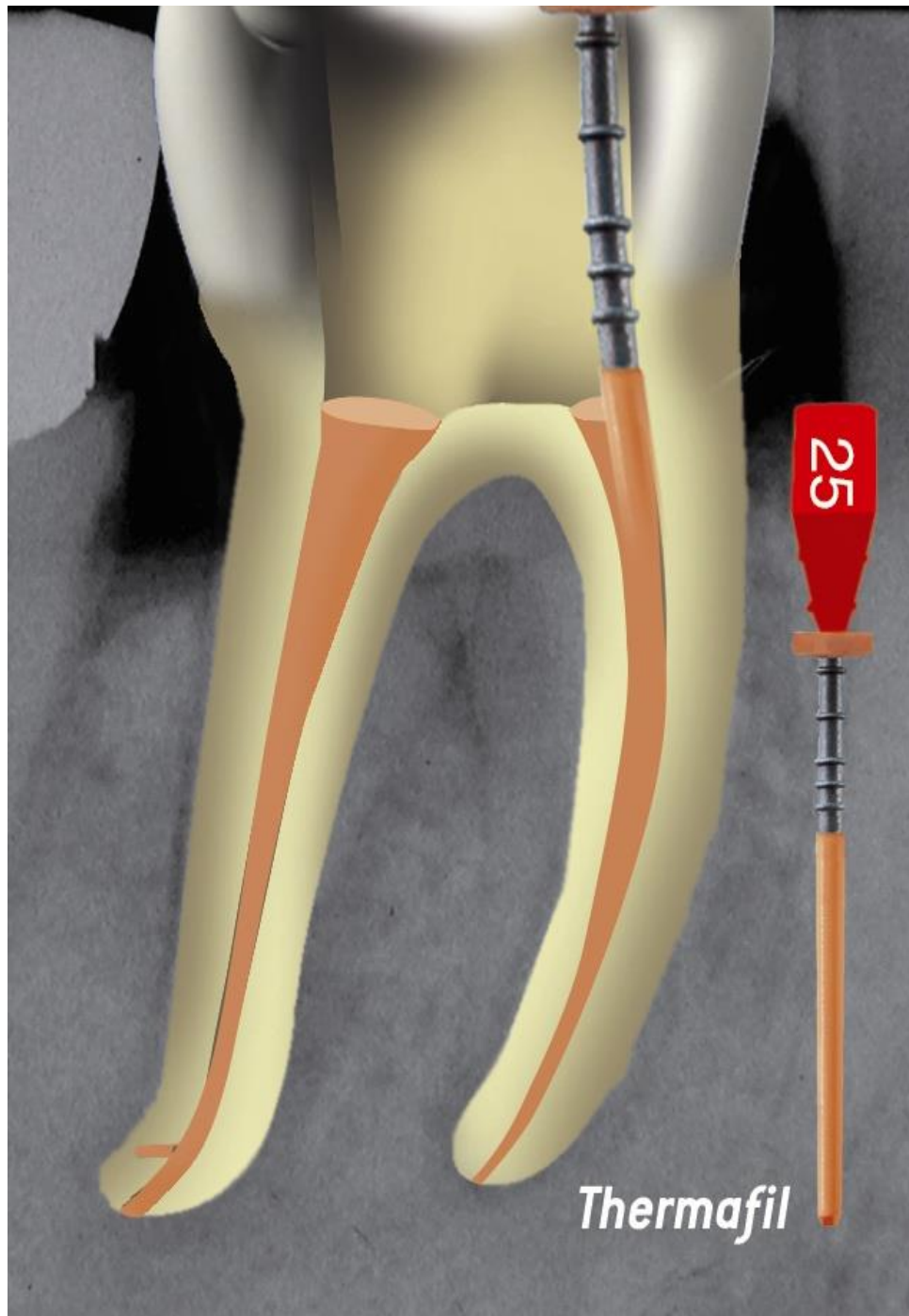
**Take it out
and insert it in the canal**

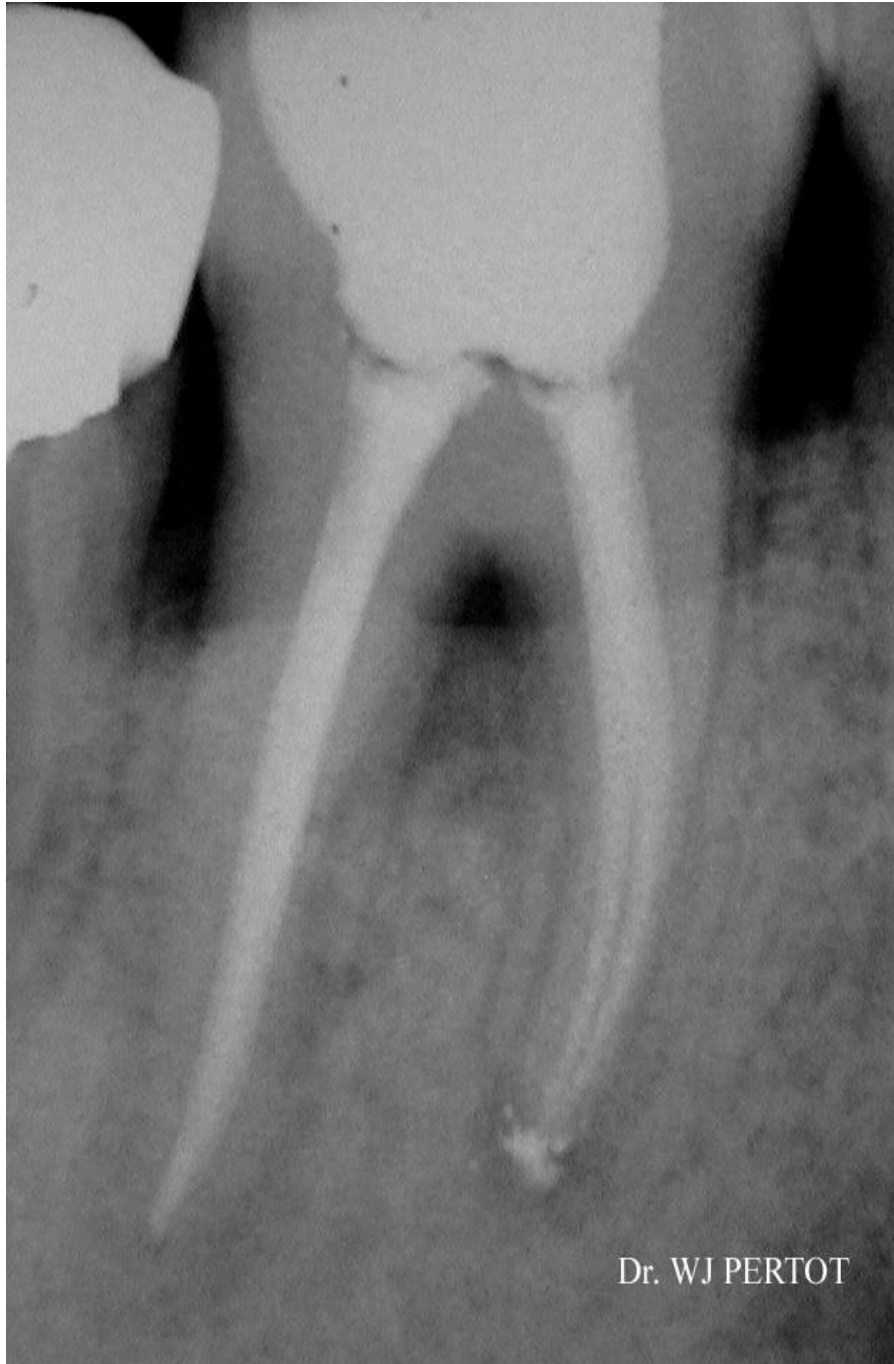




Use of a selected Plugger to ensure homogeneity of the filling.







DENTSPLY

MAILLEFER



Shaping with GT

Series X

Obturators GTX



MODULE 6

DENTSPLY

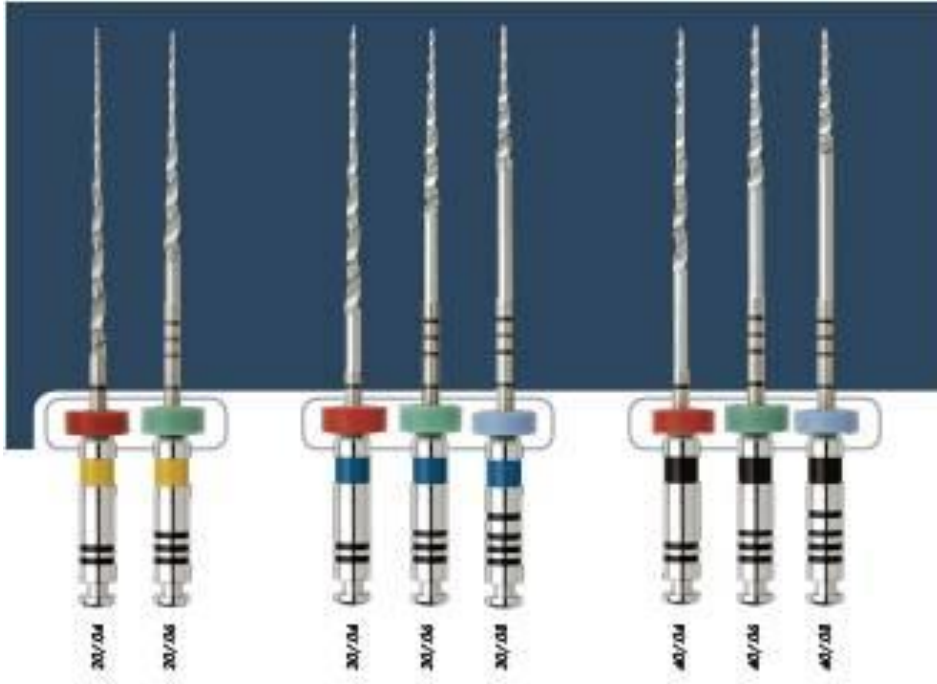
MAILLEFER



GT[®] SERIES
ROTARY FILES



m-wire[™]
nickel titanium



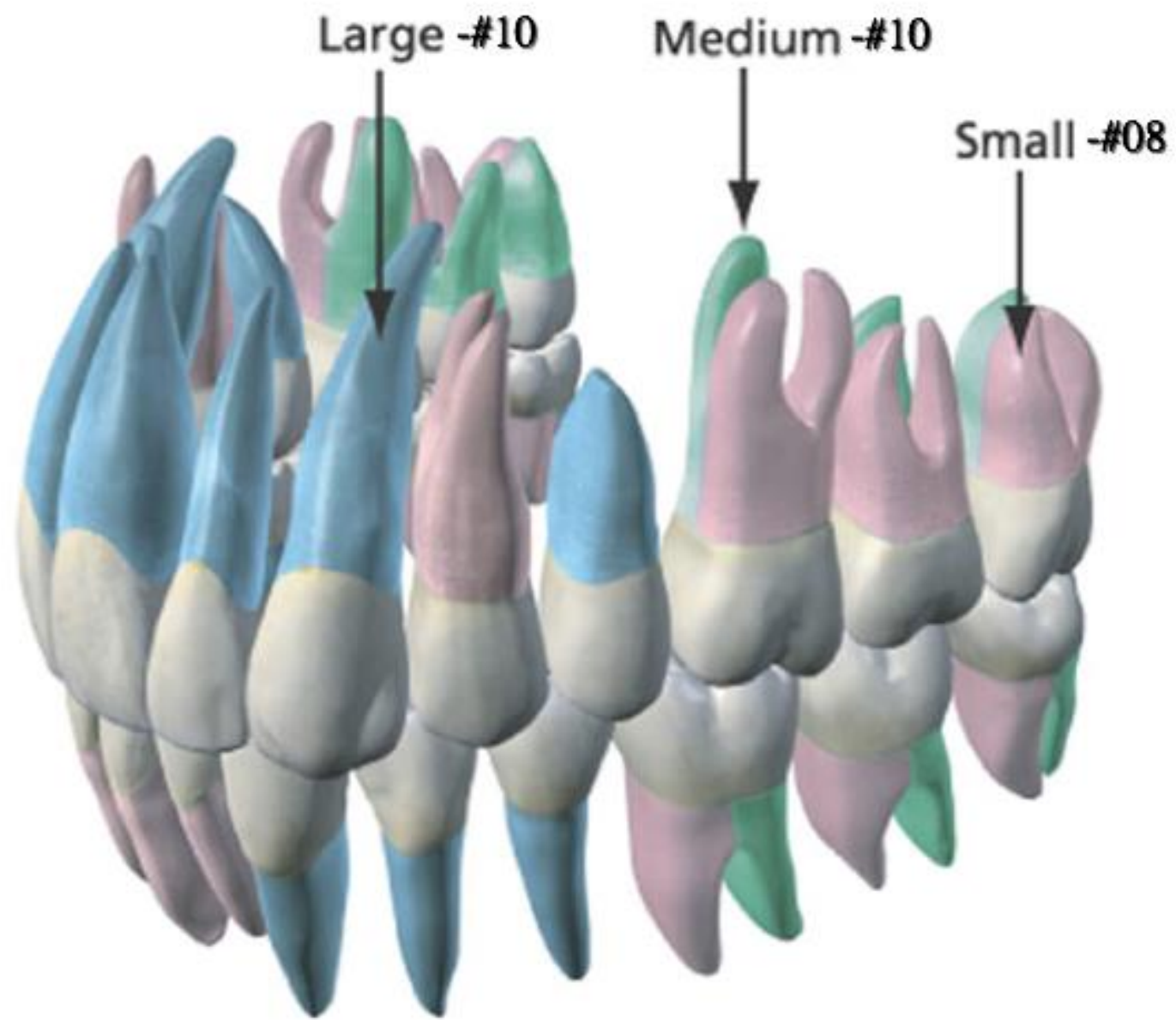
GT[®] Series X Instrumentation Guidelines

Clean tip: Incomplete apical shape



Debris-filled tip: Completed apical shape





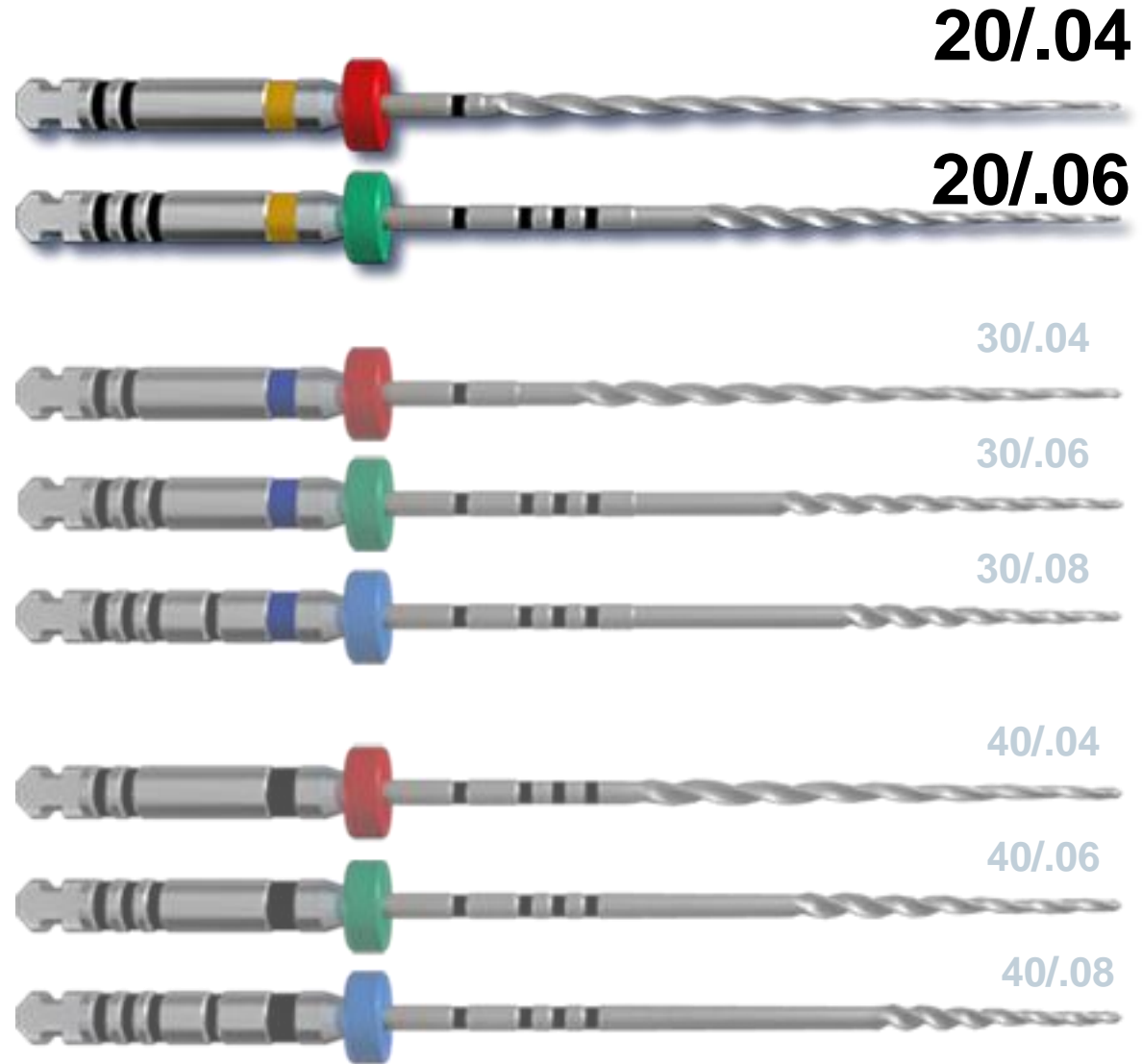
GT[®] Series X Instrumentation Guidelines

For Small roots



GT[®] Series X Instrumentation Guidelines

For Severely curved canals



20/.04

20/.06

30/.04

30/.06

30/.08

40/.04

40/.06

40/.08

GT[®] Series X Instrumentation Guidelines

For Large canals



20/.04



20/.06



30/.04



30/.06

30/.08



40/.04



40/.06



40/.08



Combined Safety and Efficiency



GT® Series X Feature: Variable Radial Lands along the flute



**Wide mid-file lands
(where big canal
curvature and high file
stiffness)**

**Benefit: Reduces risk of
transportation, ledging and
perforation**

**Narrow lands in tip
region (+ shank
end)
(where little
curvature)**

**Benefit: Higher cutting
efficiency**

Faster Cutting and Exceptional Debris Removal



GT® Series X Feature: Large flute spacing

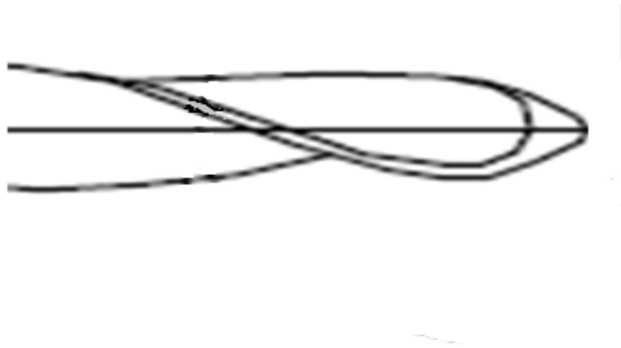


Flat helical angles

Benefit: Faster cutting and exceptional debris removal

Safe for the canal path

GT® Series X Feature: rounded safe ended tip



Benefit: Reduces the risk for:

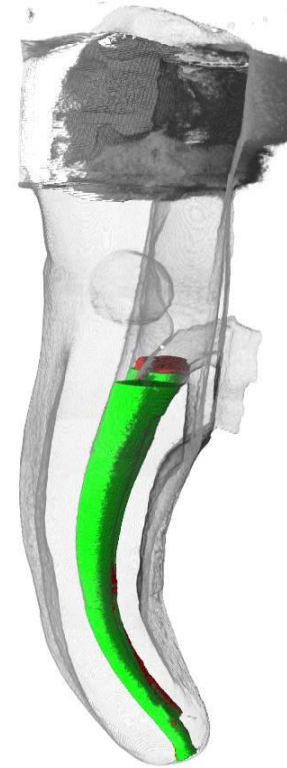
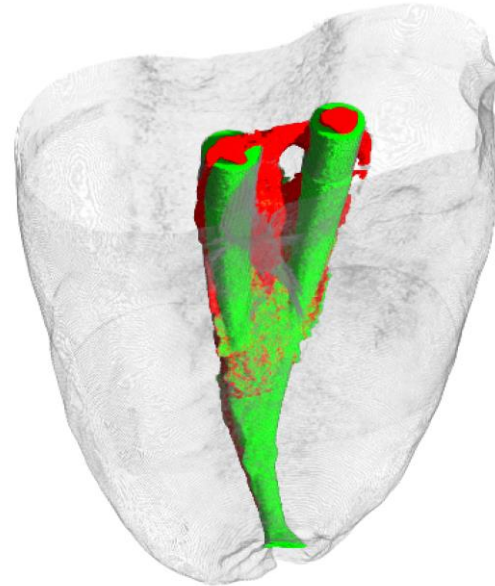
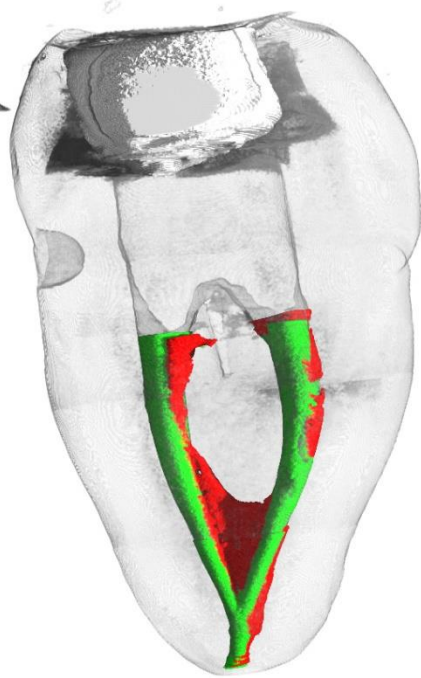
- Perforations
- Transportation
- Ledging

Safe for the canal path

Teeth, with slight to severe apical curvature, instrumented by Dr. Jim Gutmann.

Red is the original morphology.

Green is the path GT® Series X made.



Research with Micro-CT scanning shows that there is virtually no transportation of severely curved canals despite the high cutting efficiency.

DENTSPLY
MAILLEFER



GT[®]SERIES
ROTARY FILES



DENTSPLY
MAILLEFER

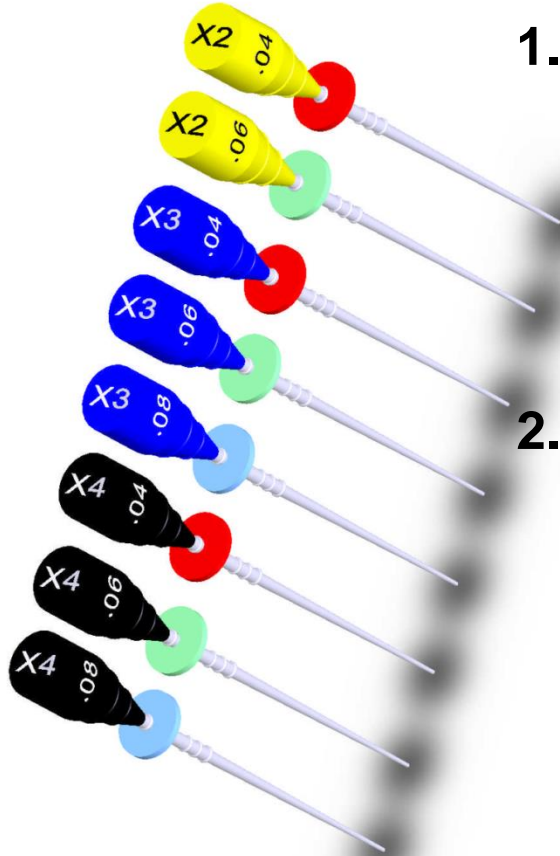


GT[®] Series X Obturators



GT[®] Series X Obturators

Same tapers as GT and differentiated by:



1. X = GT Series X

a) 2 = .20

b) 3 = .30

c) 4 = .40

2. Stoppers are colored to indicate the taper:

a) Red = .04

b) Green = .06

c) Blue = .08

Same Technique as for obturators (thermafil type)

