

# **Central Nervous System Congenital Abnormalities**

Eva Brichtova

# Neural tube defects:

## Dysraphism:

uncomplete neural tube closure with possible herniation

1. Cranial dysraphism
2. Spinal dysraphism

Total dysraphism – craniorachischisis: non developed calvarium with complete spinal canal splitting (mostly abortus)

# 1. Cranial dysraphism:

uncomplete neural tube closure with „cranial bifidum“  
(middleline calvaria defect) with possible cephalocele.

## Cephalocele:

- a) cranial meningocele - dura mater and CSF herniation
- b) encephalocele – cerebral tissue herniation
- c) anencephaly - open dysraphism, without calvaria bones

Localisation: middle line, frontal, parietal or occipital

Diagnosis: X-rays skull and spine - skeleton defects  
Ultrasound – hernia content  
CT or MRI – detailed information

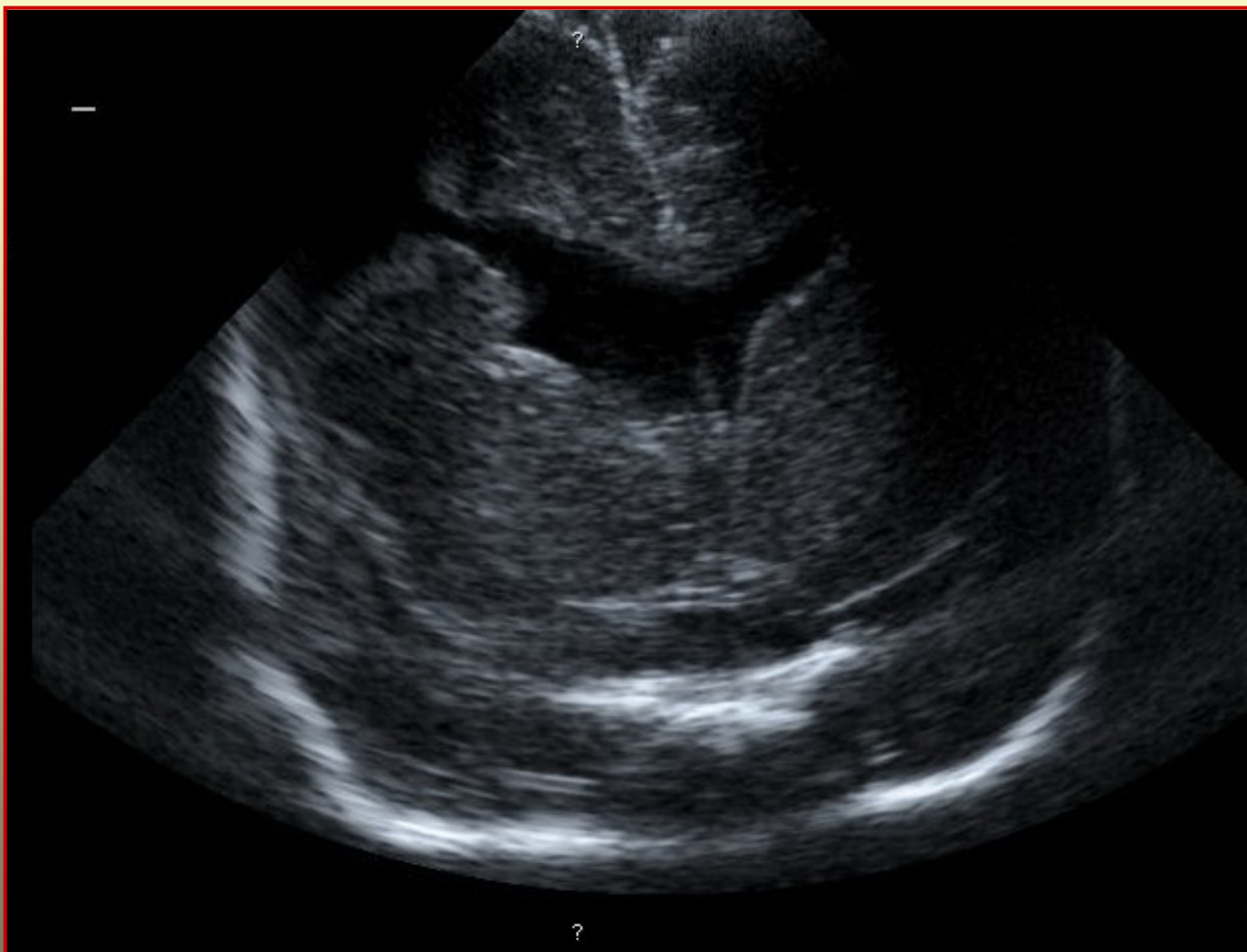
Cranial meningocele mostly has a good prognosis.

Encephalocele is mostly accompanied by hydrocephalus, mikrocephaly, mental retardation, epileptic seizures.



- a) microcephalia
- b) hydranencephalia - a loss of almost all cerebral tissue
- c) holoprosencephalia – hemispherical development disturbance
- d) lissencephalia - severe disturbance of neural tissue migration
  - agyria – completely smooth cerebral surface
  - pachygyria – few flat gyruses
  - polymicrogyria – small gyruses, shallow sulci (similar to pachygyria)
- e) porencephalia
- f) agenesis of corpus callosum
- g) Dandy-Walker syndrom (cerebellar hypoplasia)
- h) macroencephaly - megalencephaly
- i) schizencephaly

## Schizencephalia



## 2. Spinal dysraphism - spina bifida

### a) Spina bifida occulta:

congenital absence of processus spinosi and vertebral arches changes  
cutaneous changes in middle lumbosacral region:

- hypertrichosis
- lipoma
- dyscoloration
- dermal sinus (cave infectious complications)

Serious conditions associated:

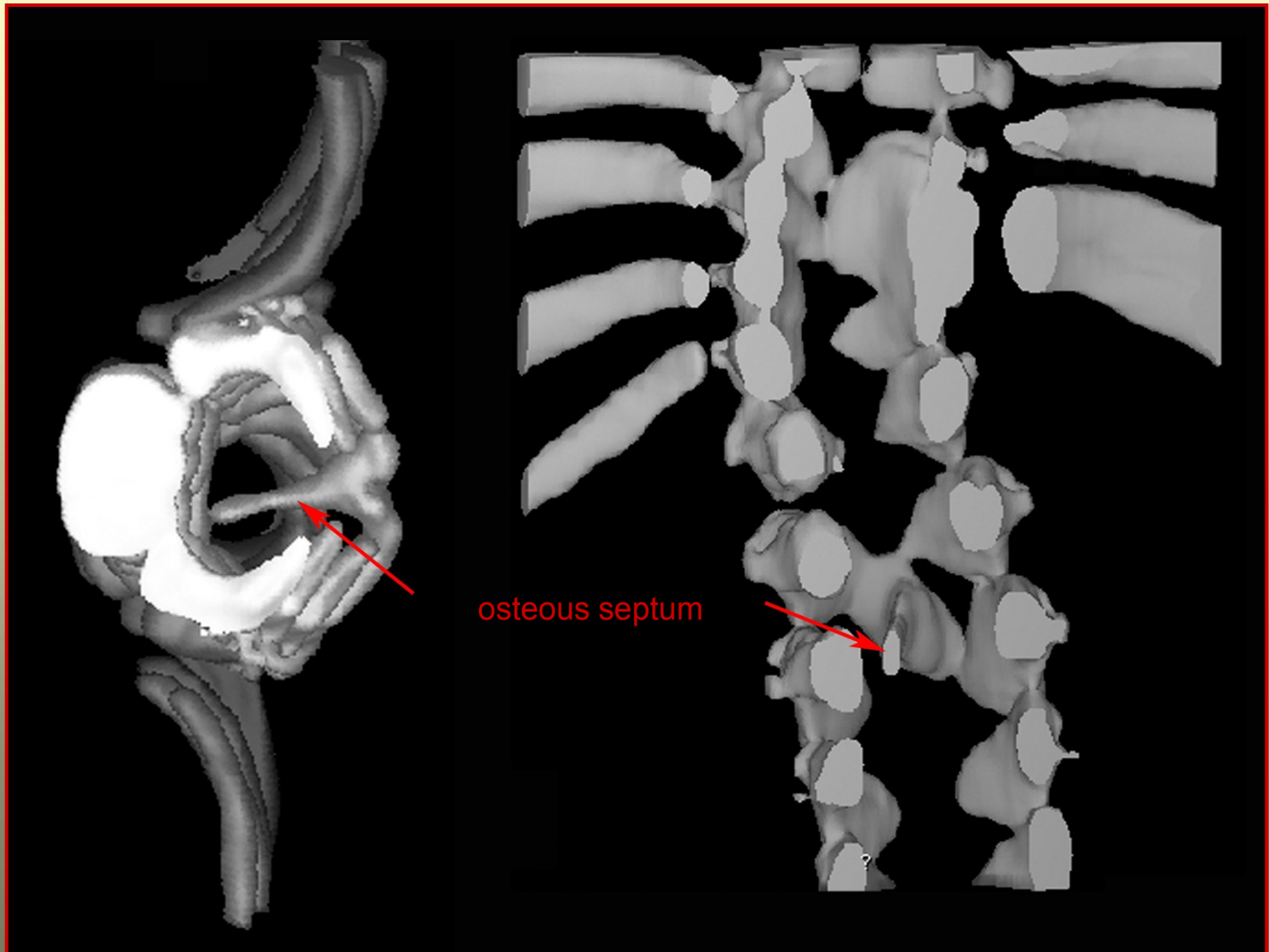
Syringomyelia

Diastematomyelia

Tethered cord syndrom

X-rays diagnosis: L5-S1 level – dorsal part of spinal canal - closure defect

## Diastematomyelia in CT 3D





## b) Spina bifida aperta seu spina bifida cystica:

meningocele – vertebral arches defect, meningeal cyst,  
in 1/3 neurological deficit

myelomeningocele - vertebral arches defect, meningeal cyst,  
structural and functional nervous tissue abnormalities

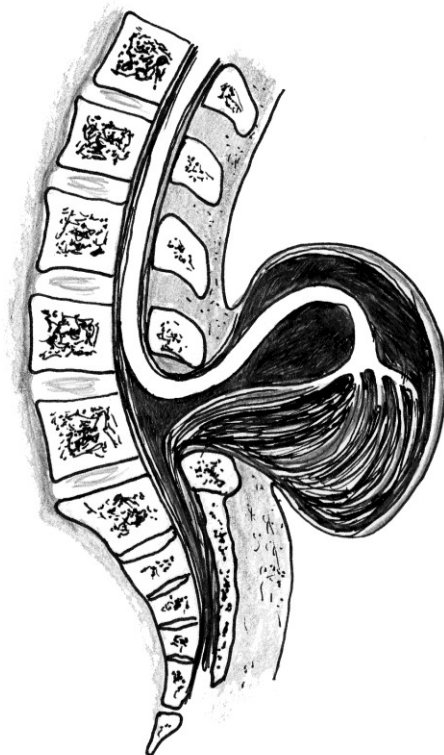
Myelomeningocele epidemiology: 1 from 1000 newborns

Clinical features: lower extremities paresis  
proprioceptive reflexes disturbance  
incontinence

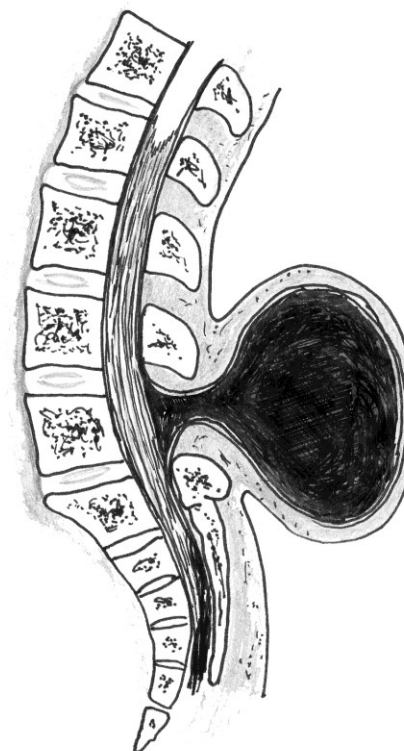
Associated conditions: hydrocephalus (in 65 – 85%)  
Chiari malformation (in 80%)

## Spinal dysraphism

Myelomeningokéla



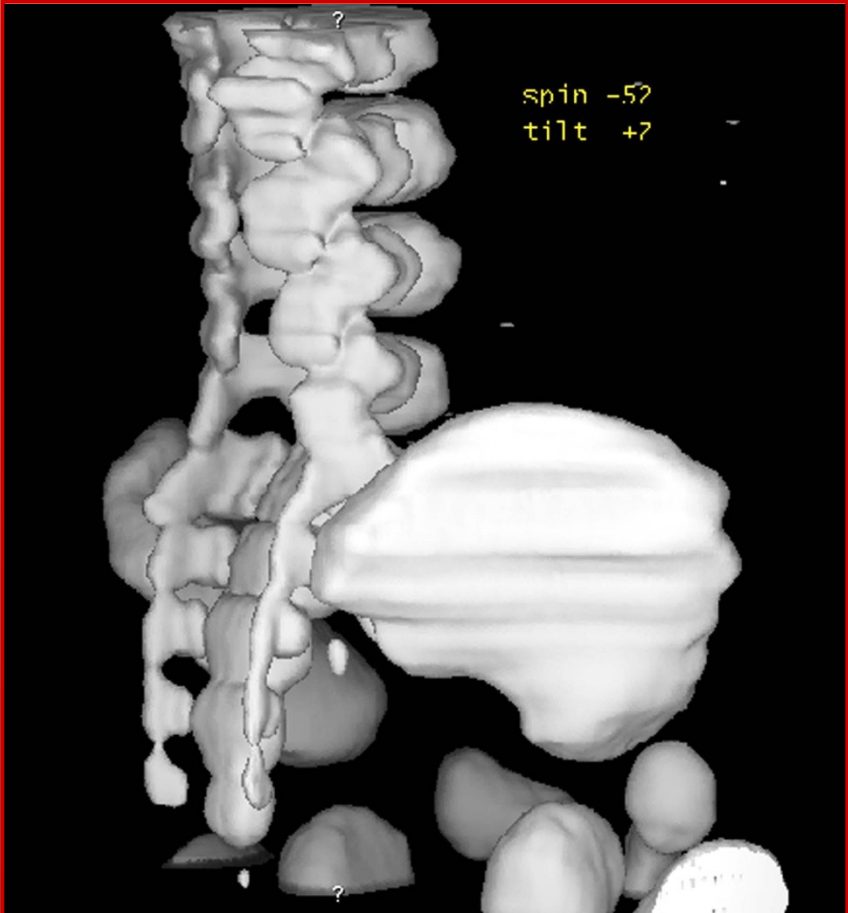
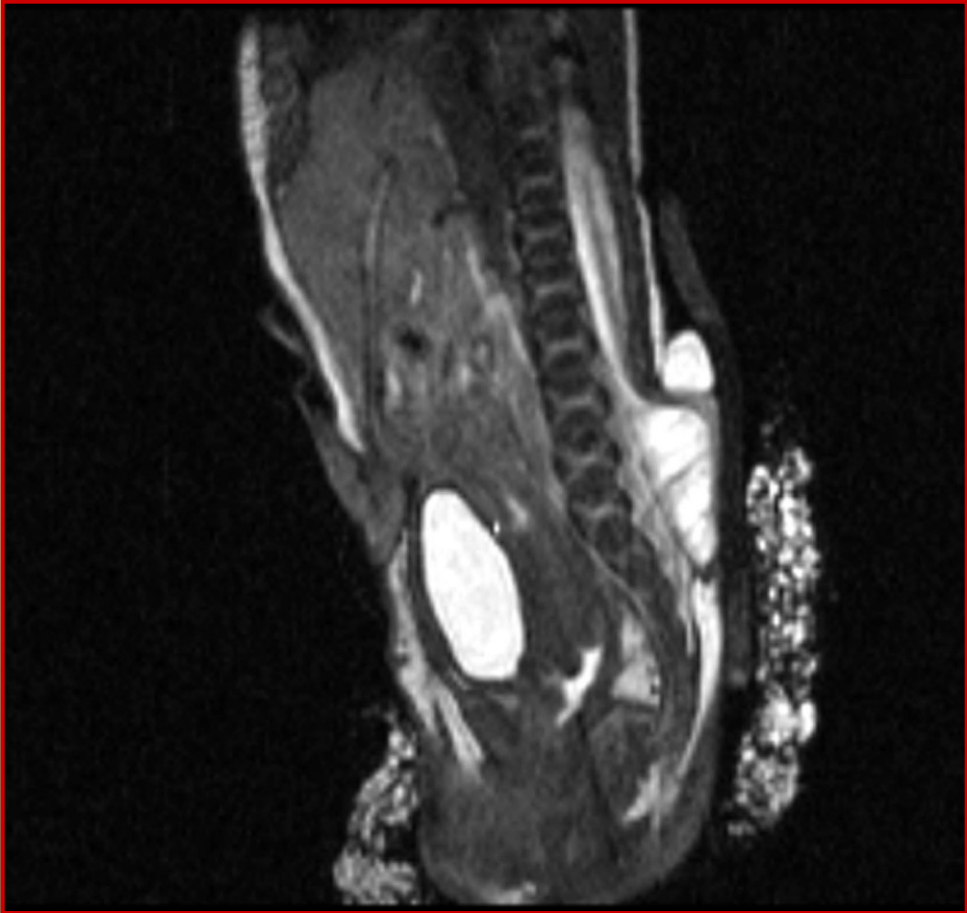
Meningokéla



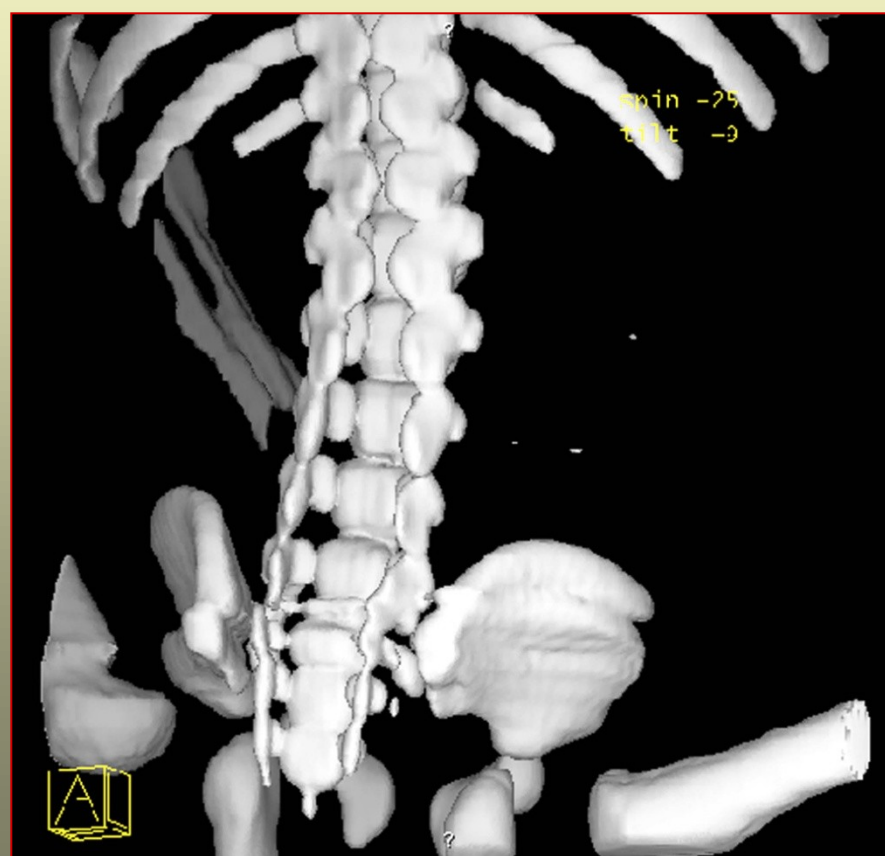
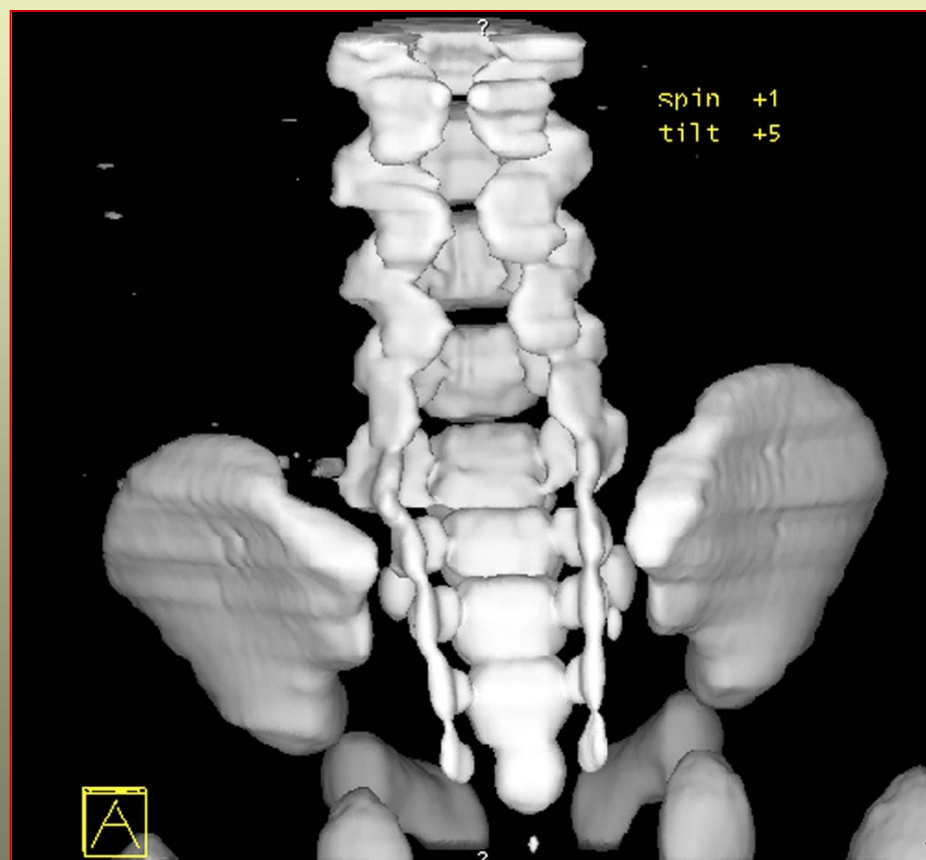
## Spinal dysraphism



# Spinal dysraphism



## Spinal dysraphism



# Spinal dysraphism



## Spinal dysraphism



## Spinal dysraphism





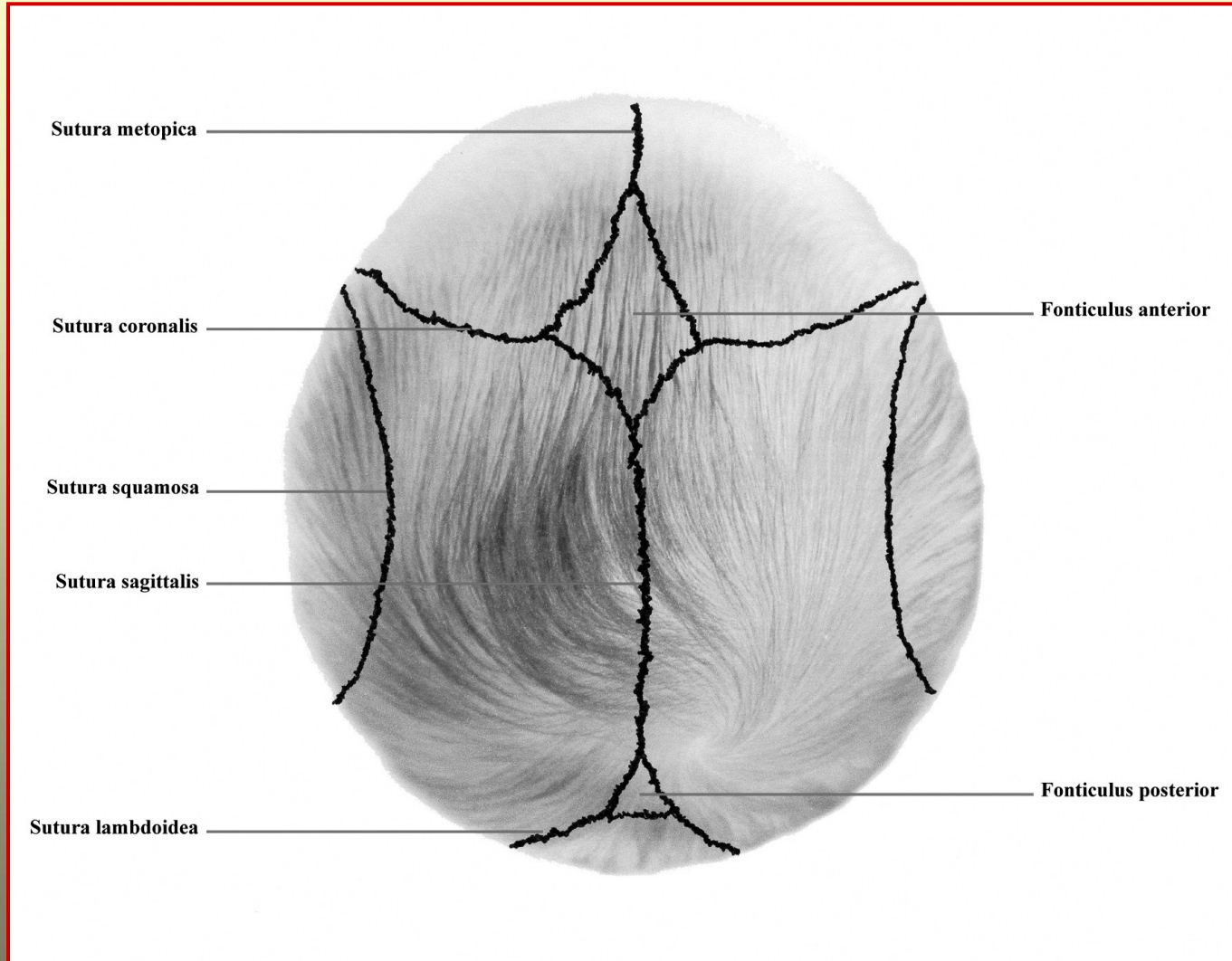
# **Craniostenosis (caniosynostosis)**

Premature skull sutures synostosis.

1852 Rudolf Virchow

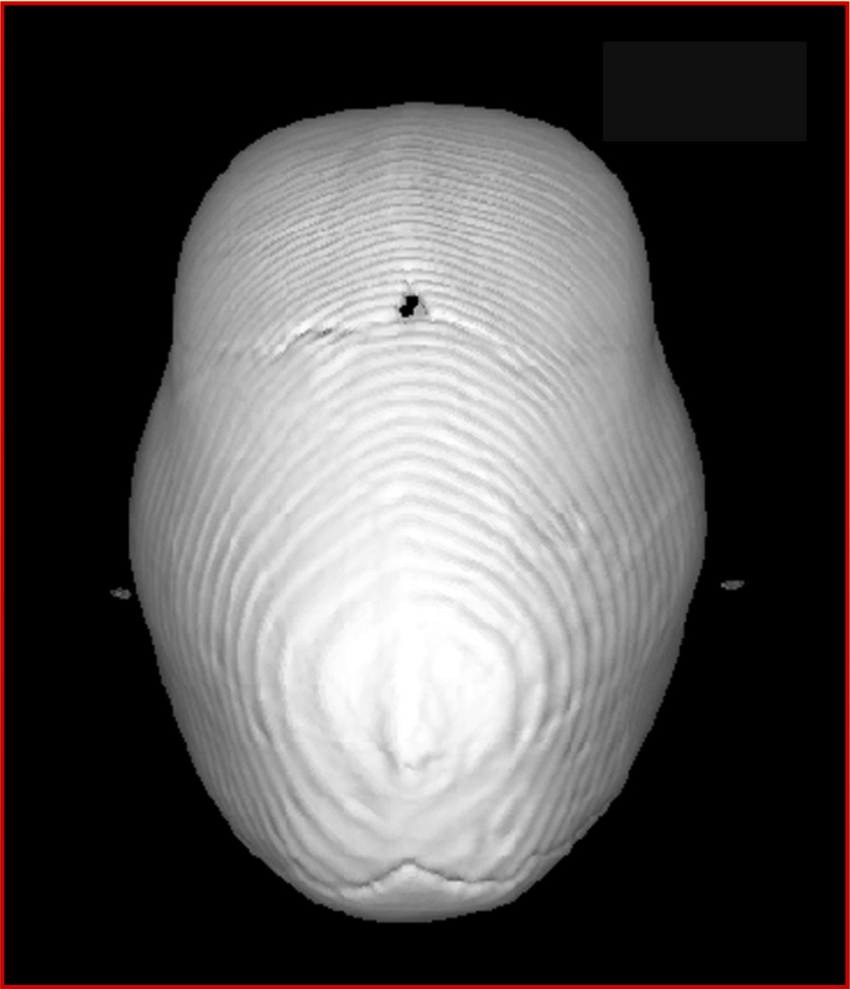
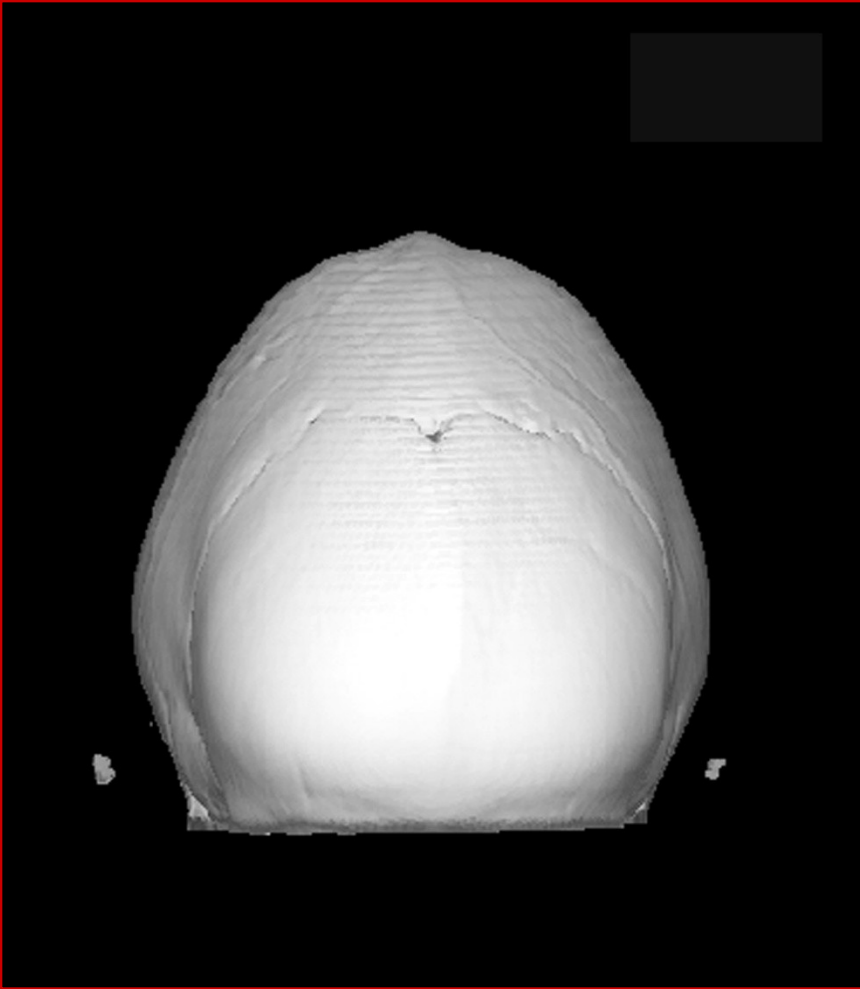
1 from 2100 children

# Sutures of the skull





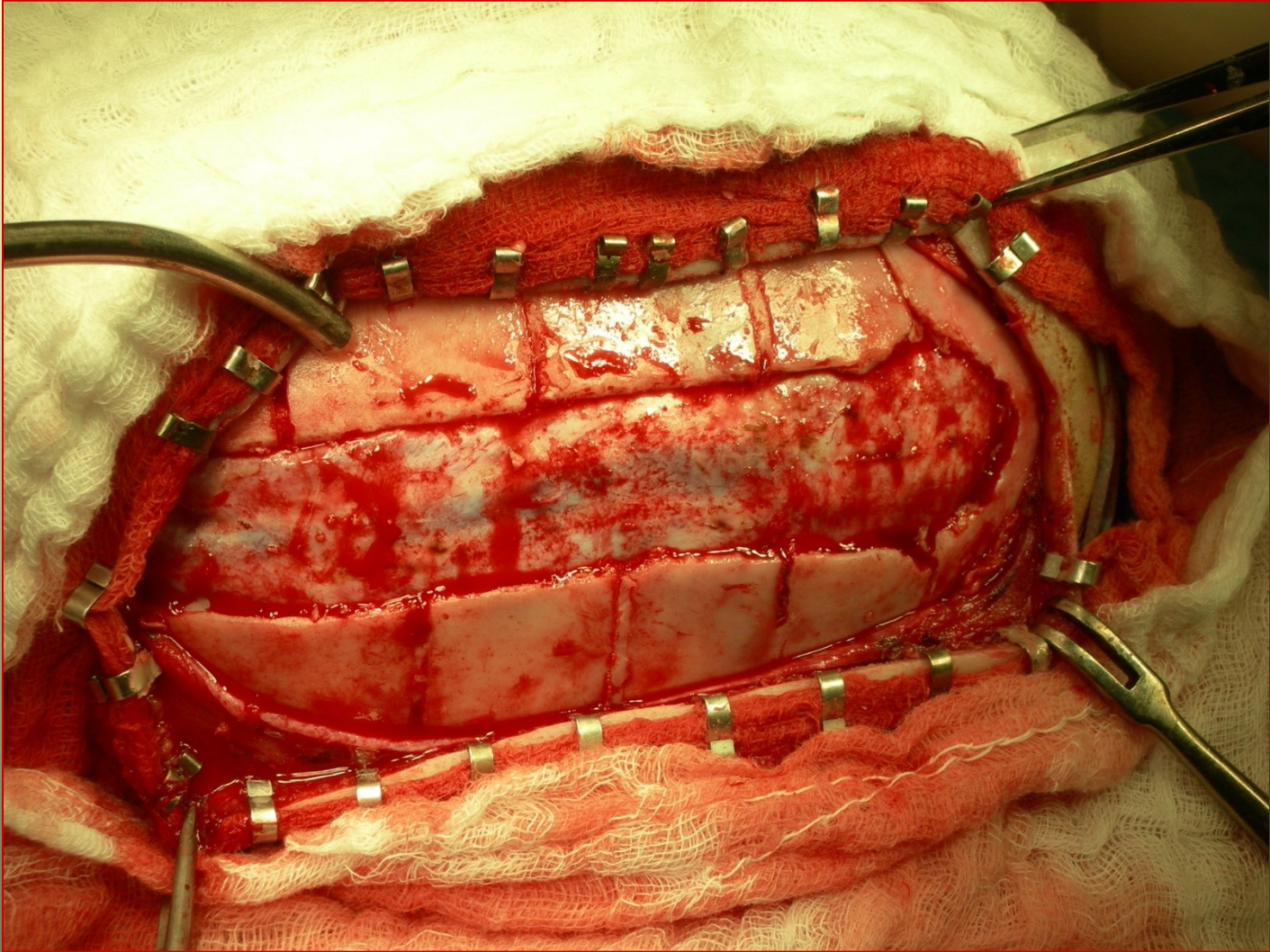
Skaphocephalia - dolichocephalia



## Skaphocephalia - dolichocephalia



Skaphocephalia - dolichocephalia



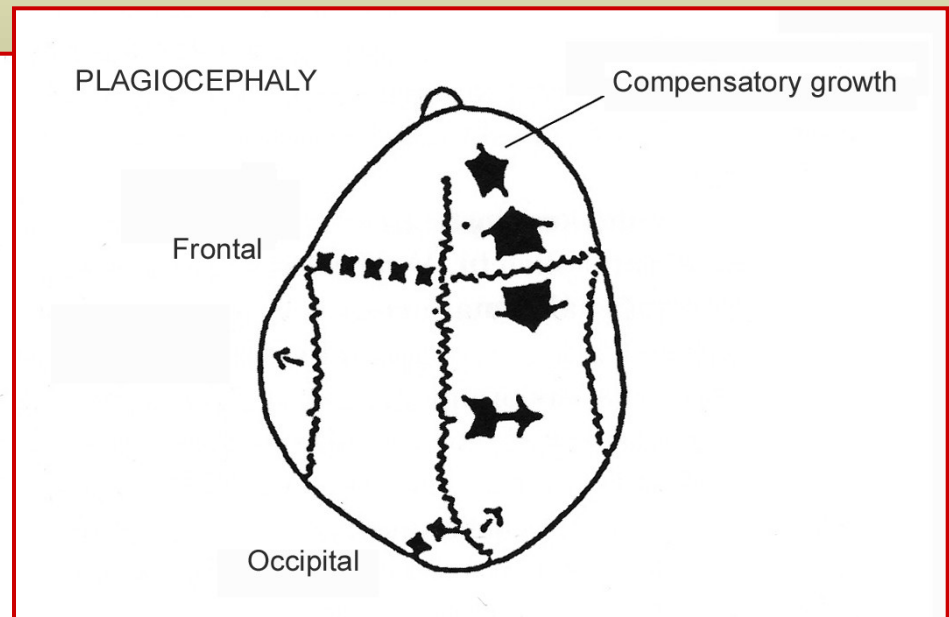
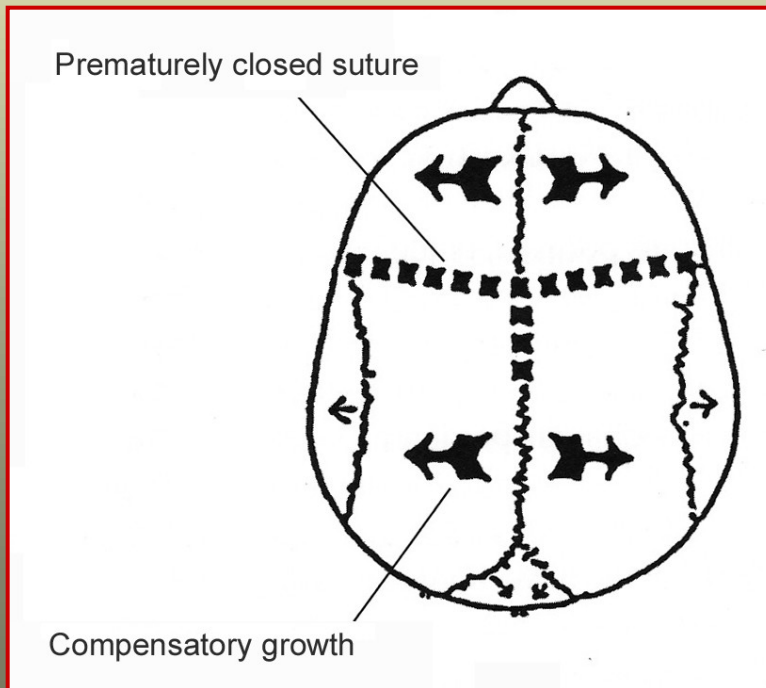
## 2. Brachycephalia

Premature coronar suture synostosis

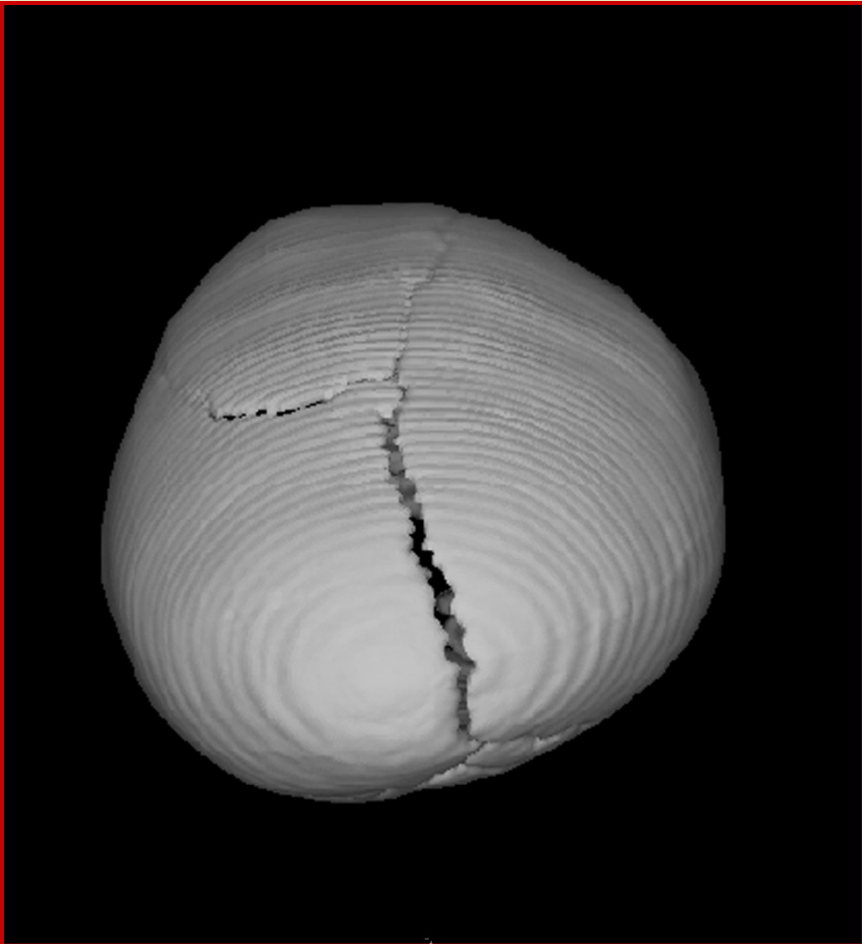
20-30%

a) **Frontal plagiocephalia** – one side coronar suture

b) **Occipital plagiocephalia** – one side lambdoid suture

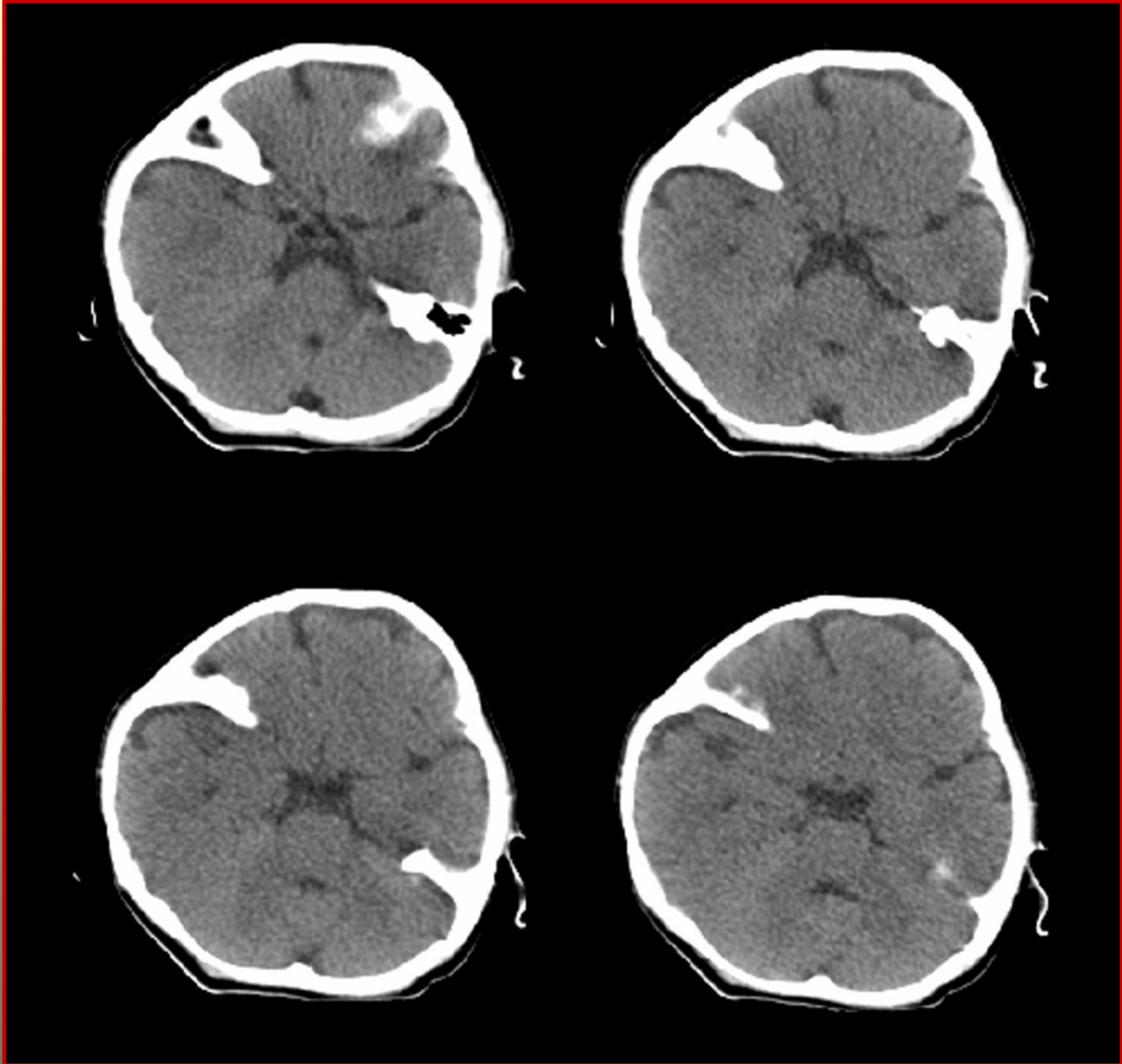


Brachycephalia





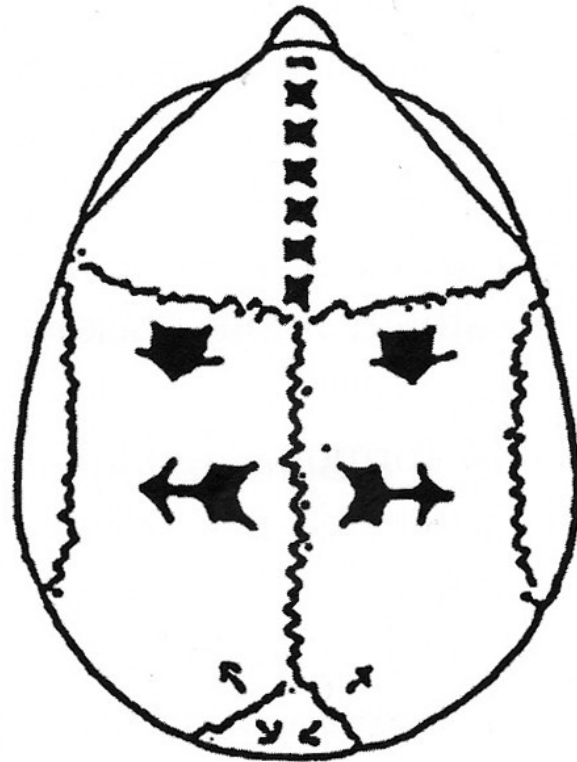
Brachycephalia



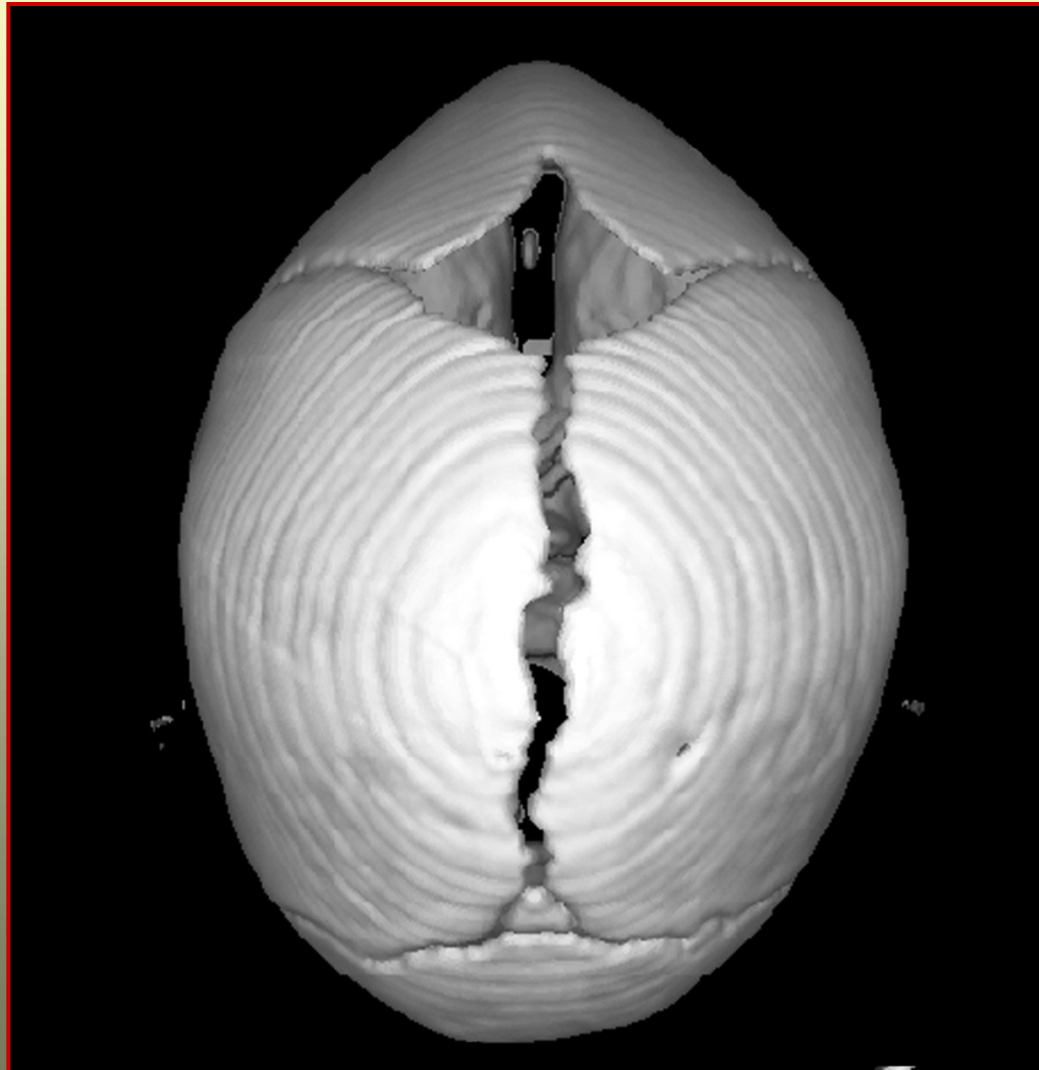
### 3. Trigonocephalia

Premature sutura metopica synostosis

10%



# Trigonocephalia



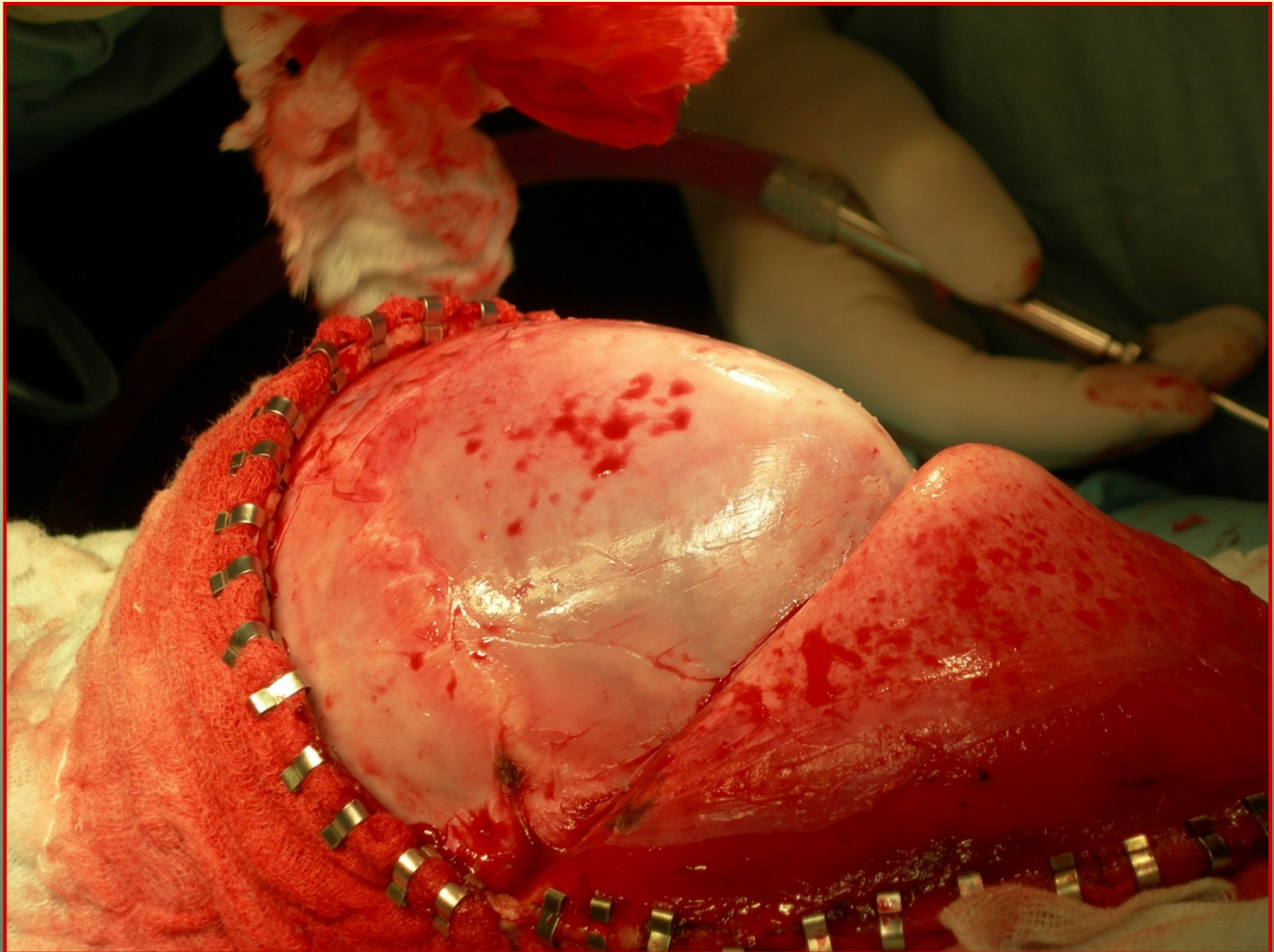
# Trigonocephalia



# Trigonocephalia



# Trigonocephalia



# Trigonocephalia



# Trigonocephalia





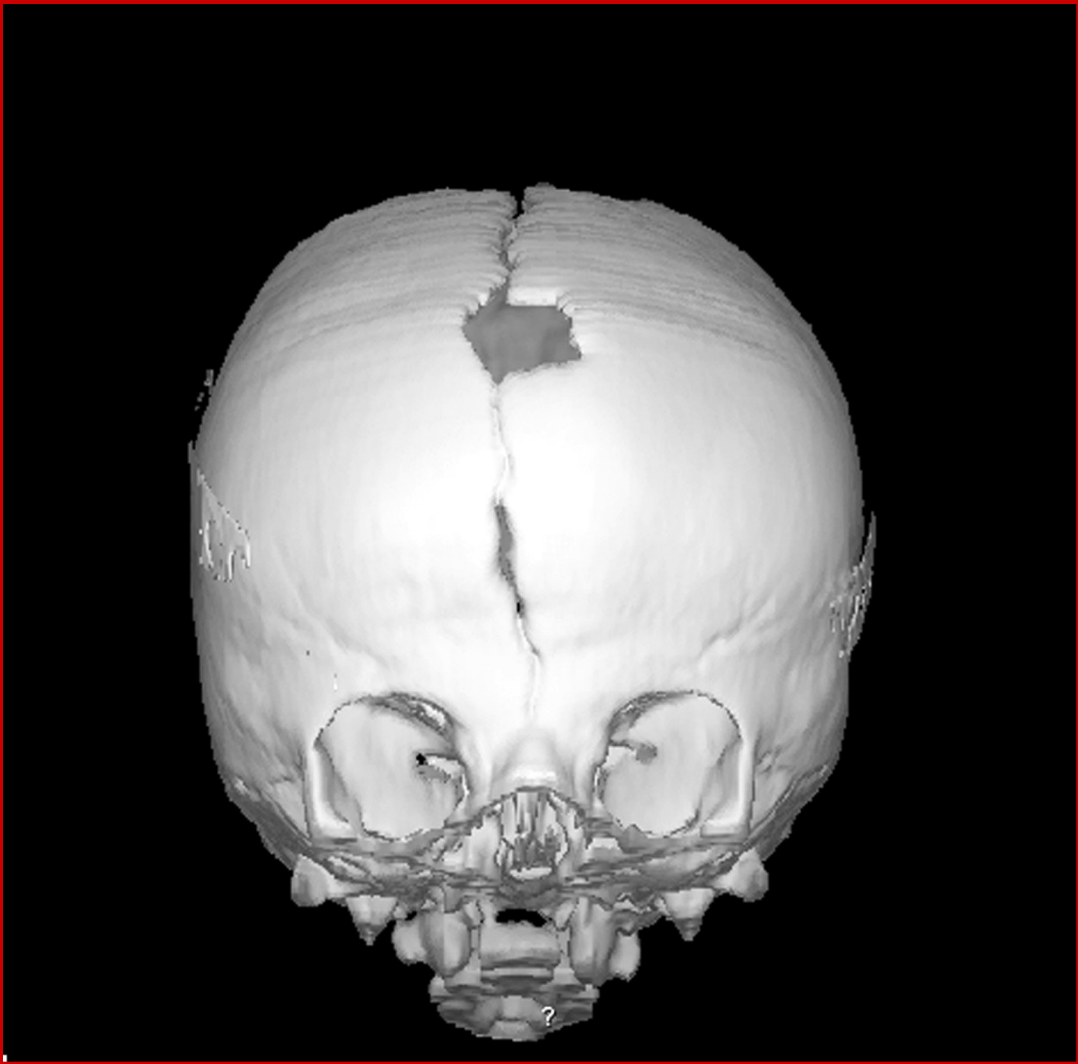
## 4. Morbus Crouzon – dysostosis craniofacialis

(1912)

- turicephaly
- shallow orbits
- exophthalmos
- hypertelorism
- hypoplasia of middle facial skelet

1 from 25 000 children

Morbus Crouzon



Morbus Crouzon



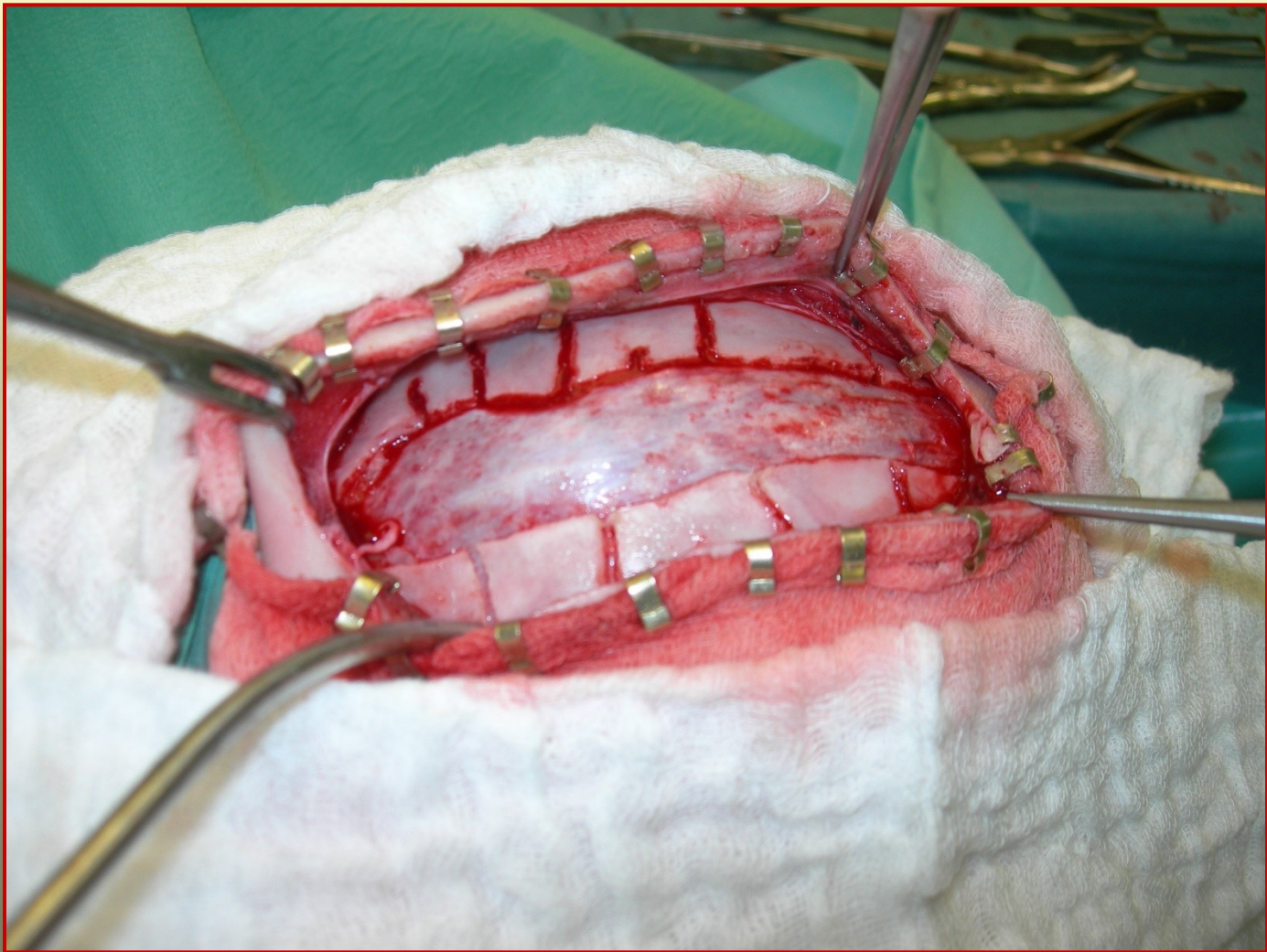
Morbus Crouzon



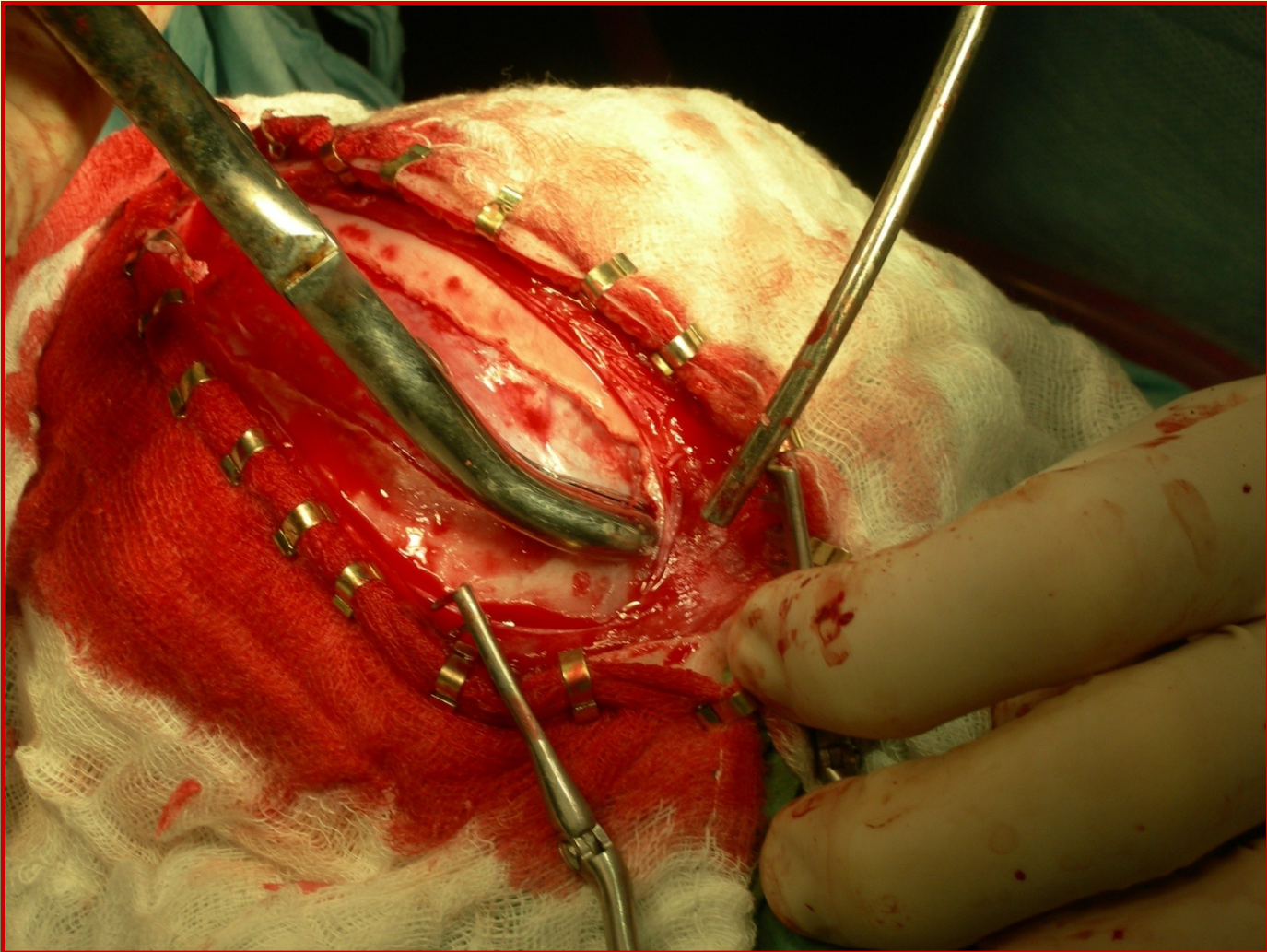
Morbus Crouzon



Morbus Crouzon



Morbus Crouzon



## Post surgery care – preventive protective helmets

