

Telencephalon

MUDr. Marek Joukal, Ph.D.

Department of Anatomy



TELENCEPHALON

Hemisphaeria cerebri

Fissura longitudinalis cerebri

Cortex cerebri

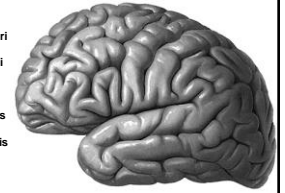
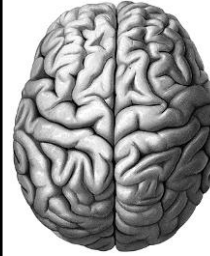
Sulci cerebri

Gyri cerebri

Polus frontalis

Polus occipitalis

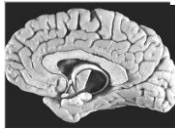
Polus temporalis



Hemisphaeria cerebri



facies superolateralis (convexa)



facies medialis



facies inferior

Margins: margo superior

margo inferior

margo medialis



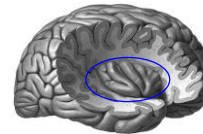
Division to the lobes:

Sulcus lateralis
ramus ant., ascen., post.

Sulcus centralis

Sulcus parietooccipitalis

Incisura praecipitalis
(impresio petrosa)



Lobus frontalis

Lobus parietalis

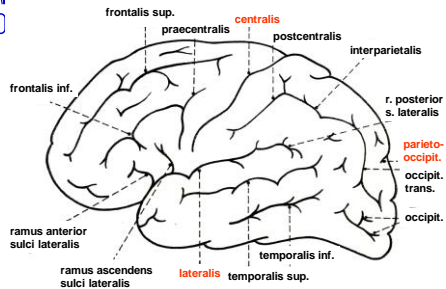
Lobus occipitalis

Lobus temporalis

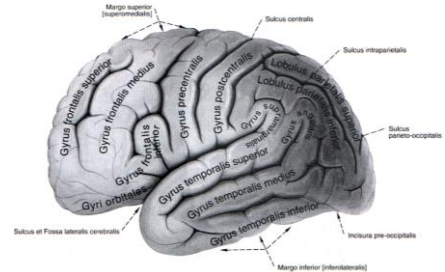
Lobus insulae

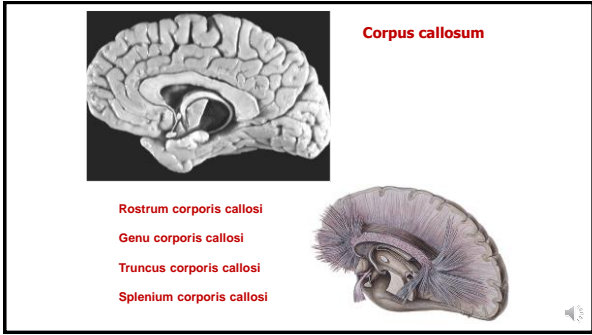
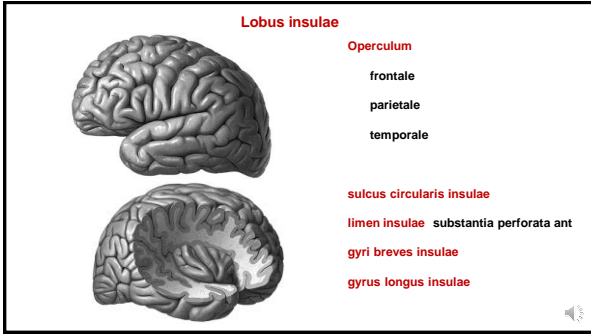
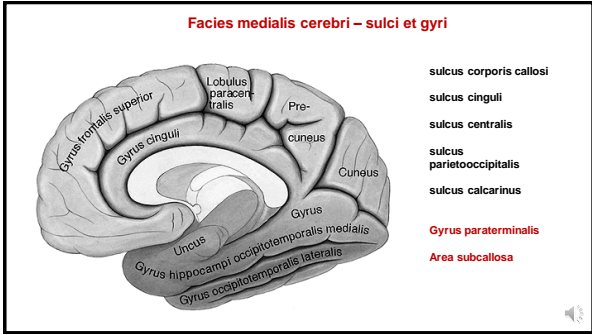
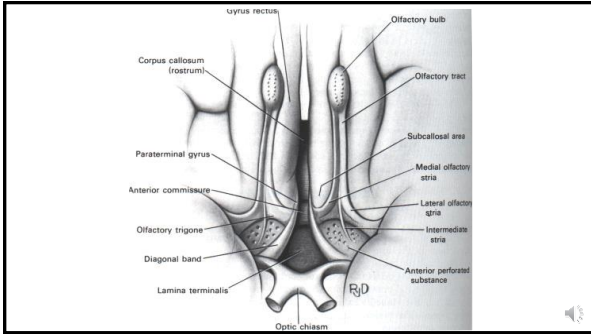
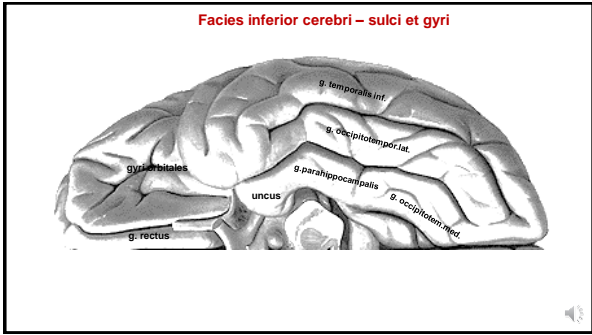
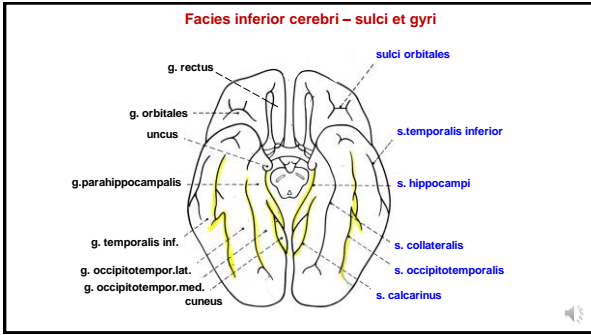


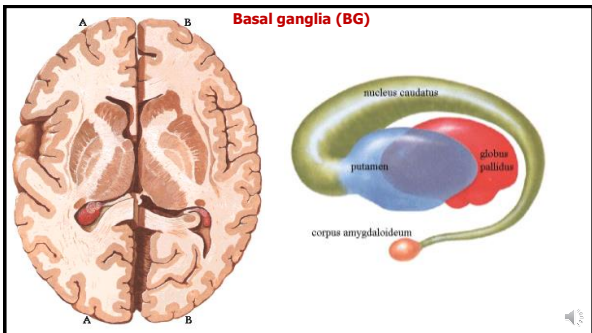
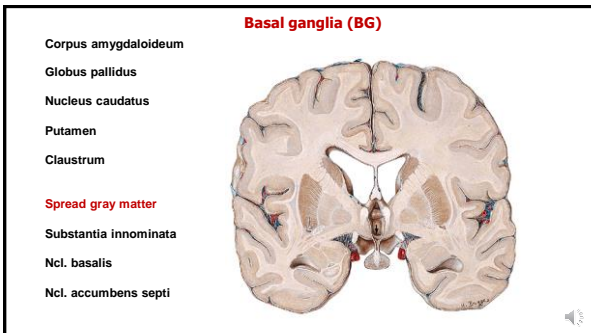
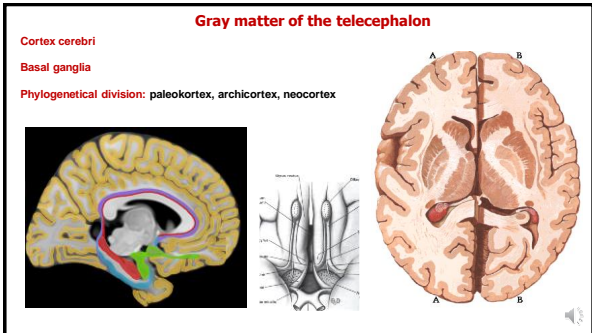
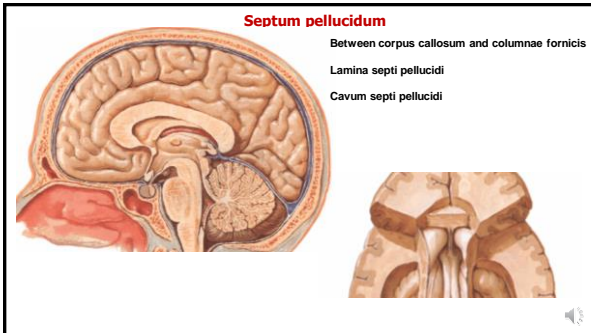
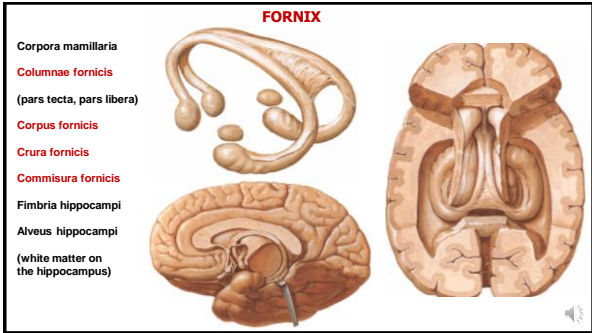
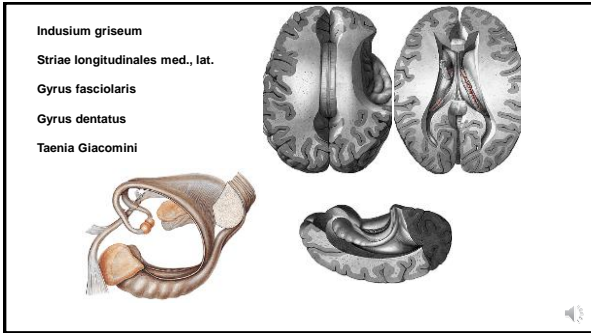
Facies superolateralis cerebri – sulci

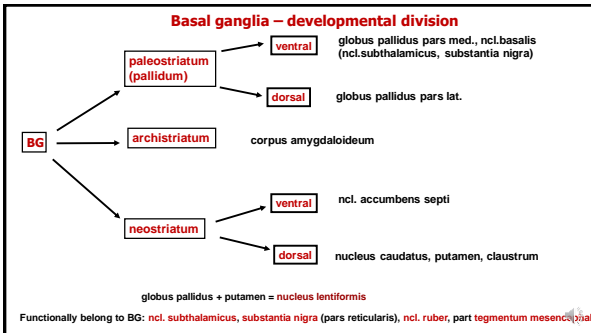


Facies superolateralis cerebri – gyri



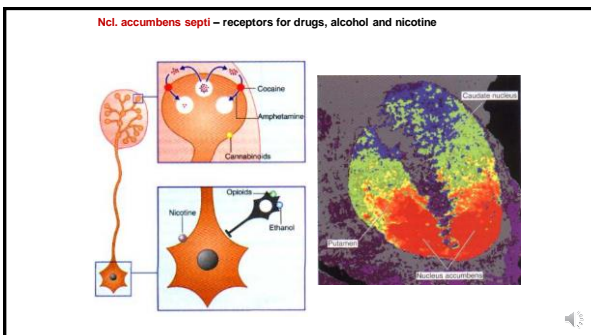
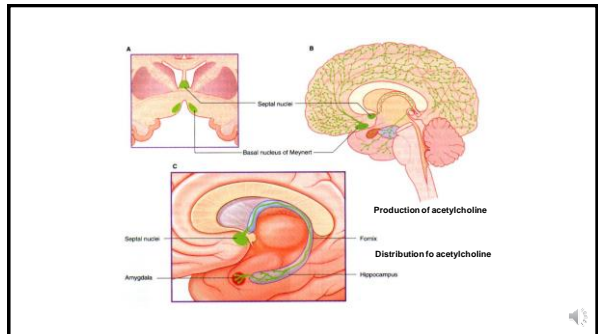
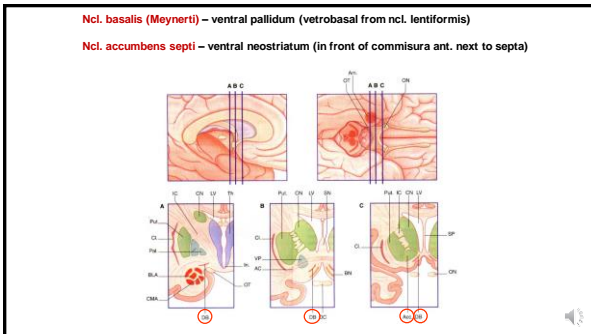






Basal telencephalon

- Substantia innominata (Reichert)**
 Ventral pallidum – Ncl. basalis (Meynerti)
 Ventral neostriatum – ncl. accumbens
- Septal area**
 Precommissural part (connection with LS)
 Septal nuclei
 Supracommissural pars (septum pellucidum)



Cortex cerebri

Area	Primary somatosensory cortex	Primary and secondary auditory cortex
3, 2, 1	Primary somatosensory cortex	41, 42
4	primary motor cortex	17
6	secondary motor cortex and premotor cortex	18, 19
		43

Taste

White matter of telencephalon

Substantia alba – fills a gap between BG and cortex

Commissural pathways

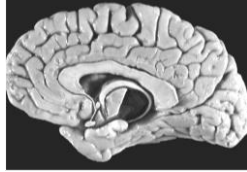
Connections of the cortical centers between right and left hemisphere

Projection pathways

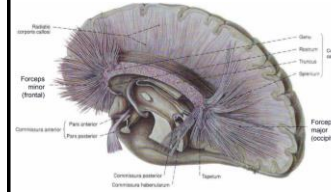
Ascending and descending connections of appropriate parts of the CNS

Association pathways

Connects cortical centers within the hemisphere



Commissural pathways



Corpus callosum

commissure of neocortex (200 mil. fibers)

forceps minor, forceps major

Commissura anterior

pars ant. - commissure of paleocortex

pars post. – commissure of neocortex

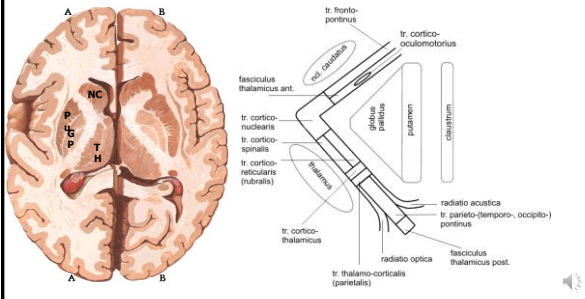
Commissura fornicis

Commissure of archicortex (LS)

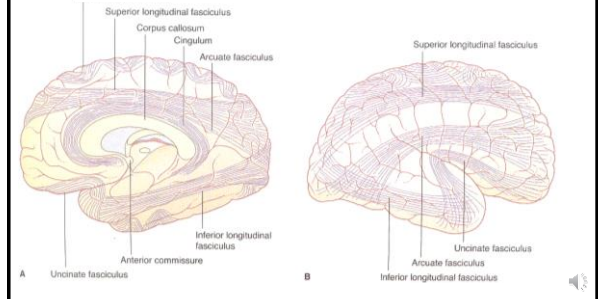
Commissural pathway also in lower parts of the CNS (e.g. diencephalon):

Commissura posterior, commissura habentularum, adhesio interthalamica

Projection pathways – capsula interna



Association pathways



References

Dubový, P., Jančálek, R.: Základy neuroanatomie a nervových drah I. Masarykova univerzita Brno, 2013
 Dokládai, M., Páč, L.: Anatomie člověka III. Masarykova univerzita v Brně, 1995.
 Čihák, R.: Anatomie 3. Praha, Grada, 2001, 2004
 Sobotta, J.: Atlas of Human Anatomy Vol1 –2 Munich, Urban und Schwarzenberg, 1993
 Páč, L., Vargová, L., Čuta, M.: Anatomie pro antropology III. Nadace universitas, Akademické nakladatelství CERM. Masarykova univerzita 2013.
 Williams, P. & Warwick, R.: Gray's Anatomy, 37 ed, Churchill Livingstone, 1996
 Netter, F.: Atlas of Human Anatomy, 4th ed., Elsevier, USA, 2006