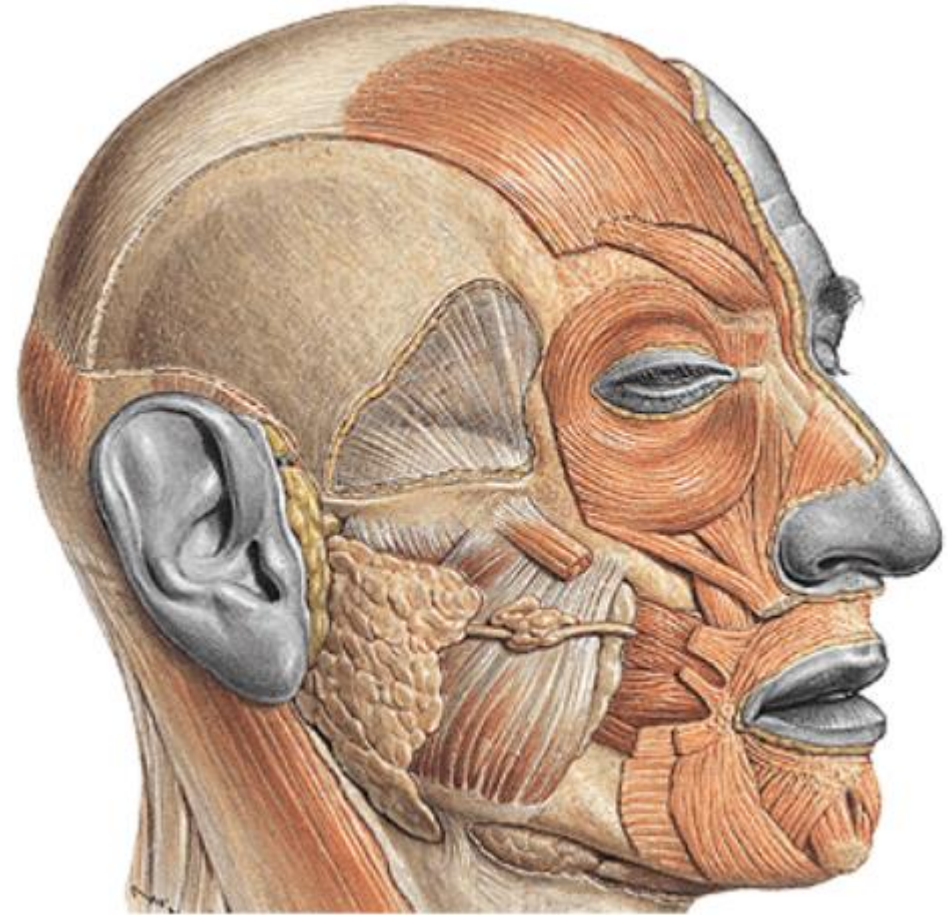


Fossa temporalis, fossa  
infratemporalis, fossa  
pterygopalatina

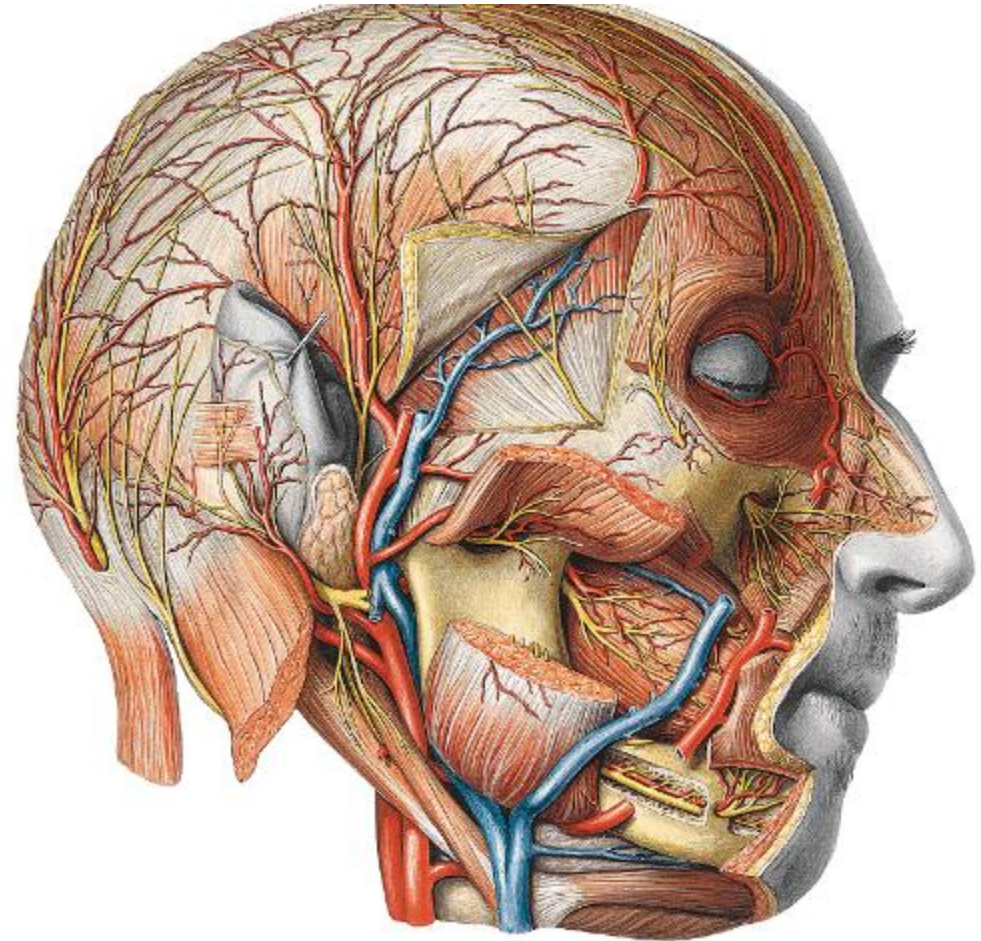
# Fossa temporalis

- Borders:  
linea temporalis sup.,  
arcus zygomaticus

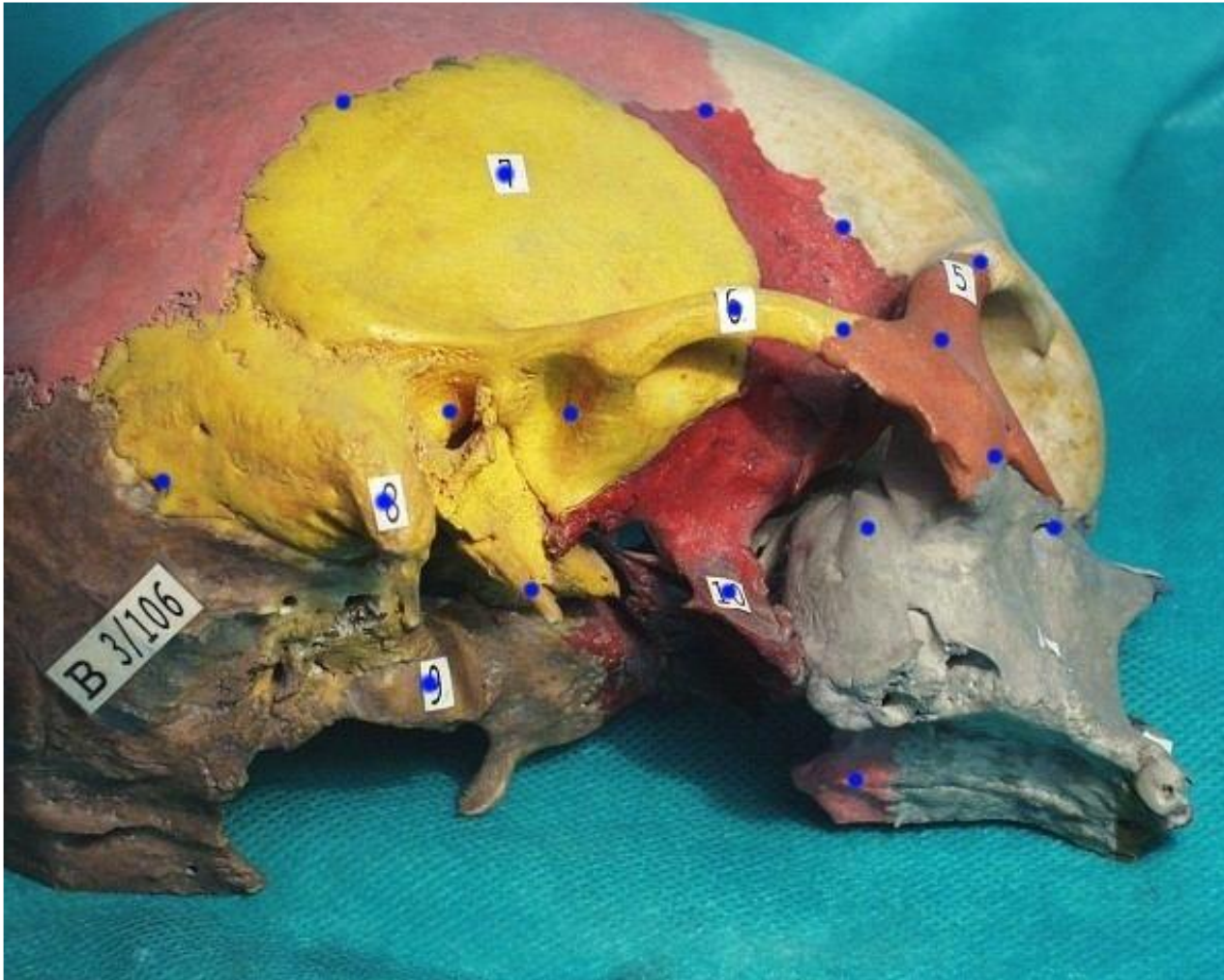


# Fossa temporalis - content

- skin
- n. auricularis magnus
- m. temporoparietalis (n.VII.)
- a., v. temporalis spf. (v. retromandibularis)
- n. auriculotemporalis
- fascia temporalis (two laminae)
- m. temporalis
- a.,v., n. temporalis prof.



# Fossa infratemporalis



## **Borders:**

Upper: crista infratemporalis  
alae majoris ossis

sphenoidalis

Ventral: facies

infratemporalis corporis  
maxillae

Lateral: ramus mandibulae

Medial: lamina lat. proc.  
pterygoidei

Dorsal: missing, styloid  
septum

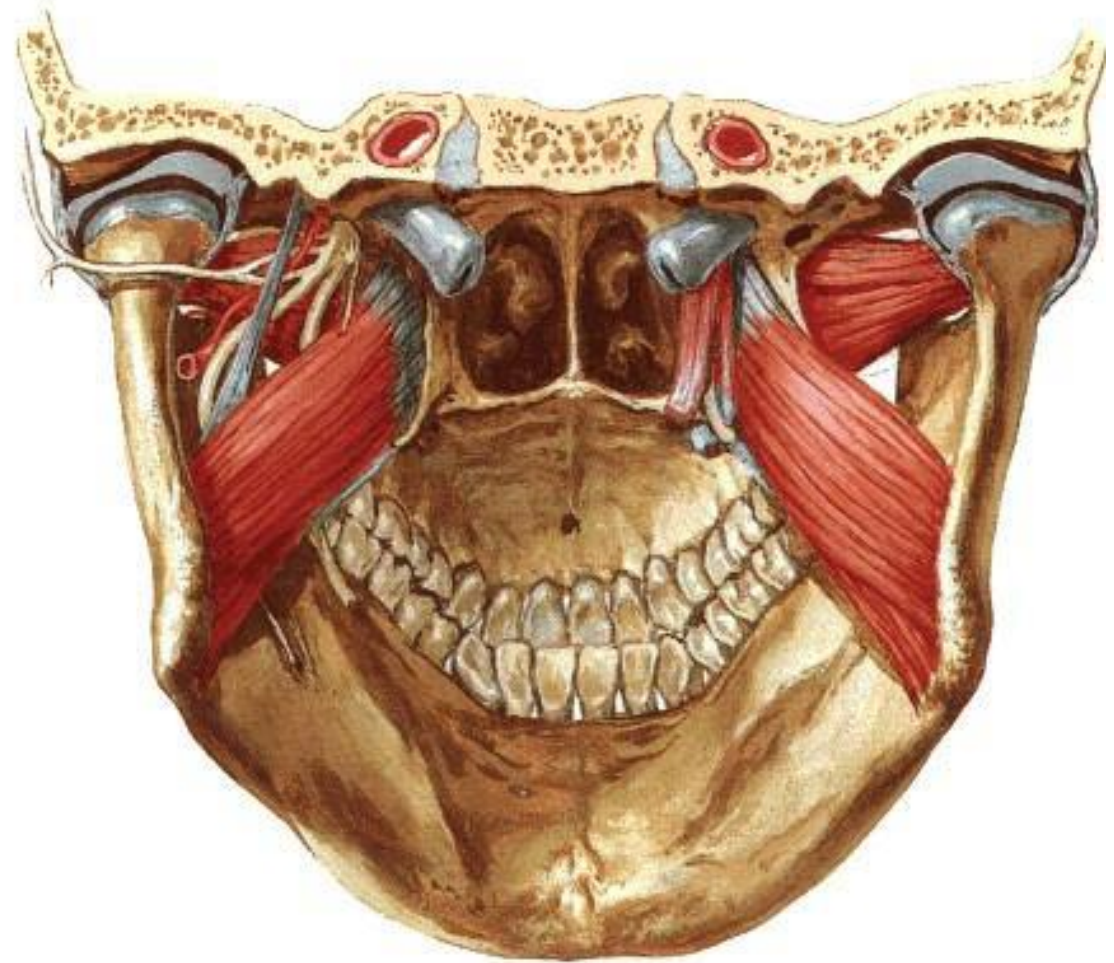
# Fossa infratemporalis - content

## **Mm. pterygoidei**

**A. maxillaris**

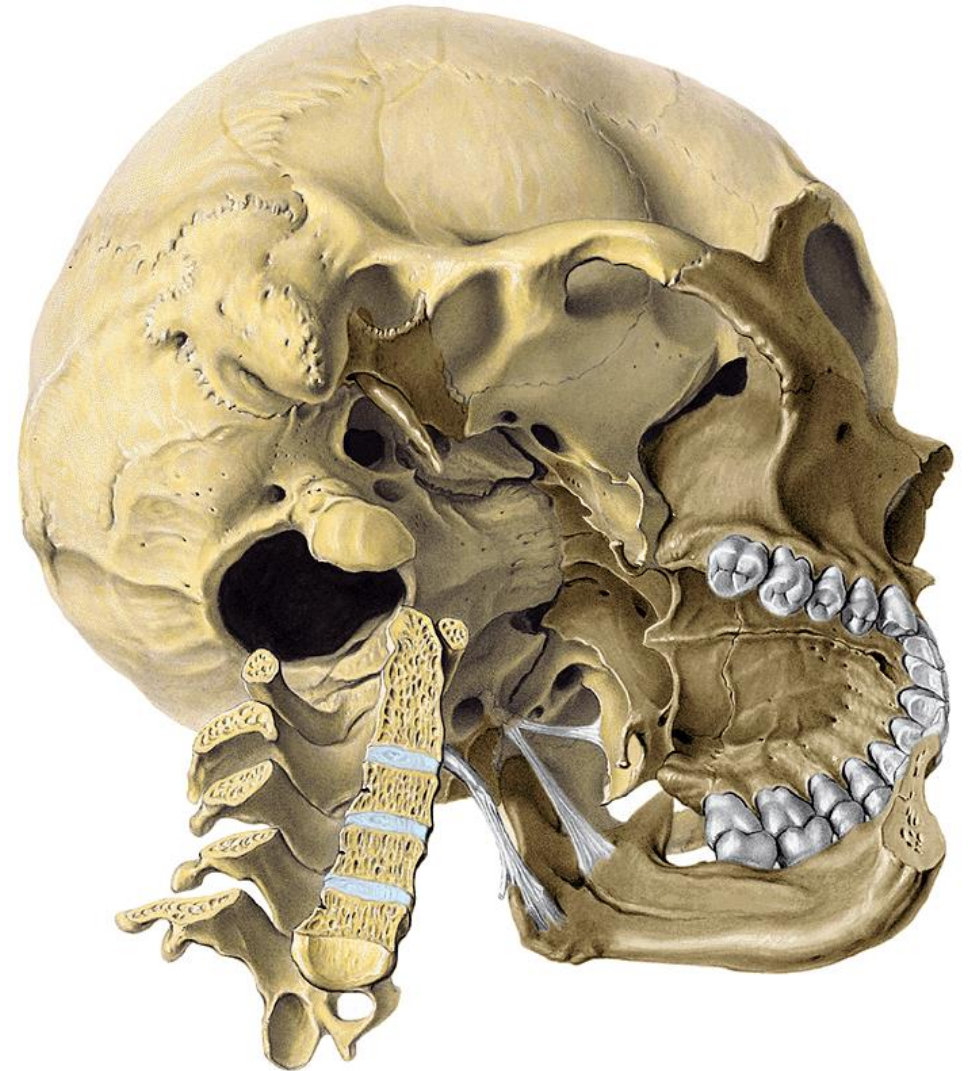
N. mandibularis

Plexus pterygoideus



# Fossa infratemporalis

- v.ophthalmica inf. (fissura orbitalis inf.)
- n.mandibularis (foramen ovale)
- a.meningea media (foramen spinosum)
- n.alveolaris inf. (canalis mandibulae)
- n.mylohyoideus (sulcus mylohyoideus)



# A.maxillaris in fossa infratemporalis

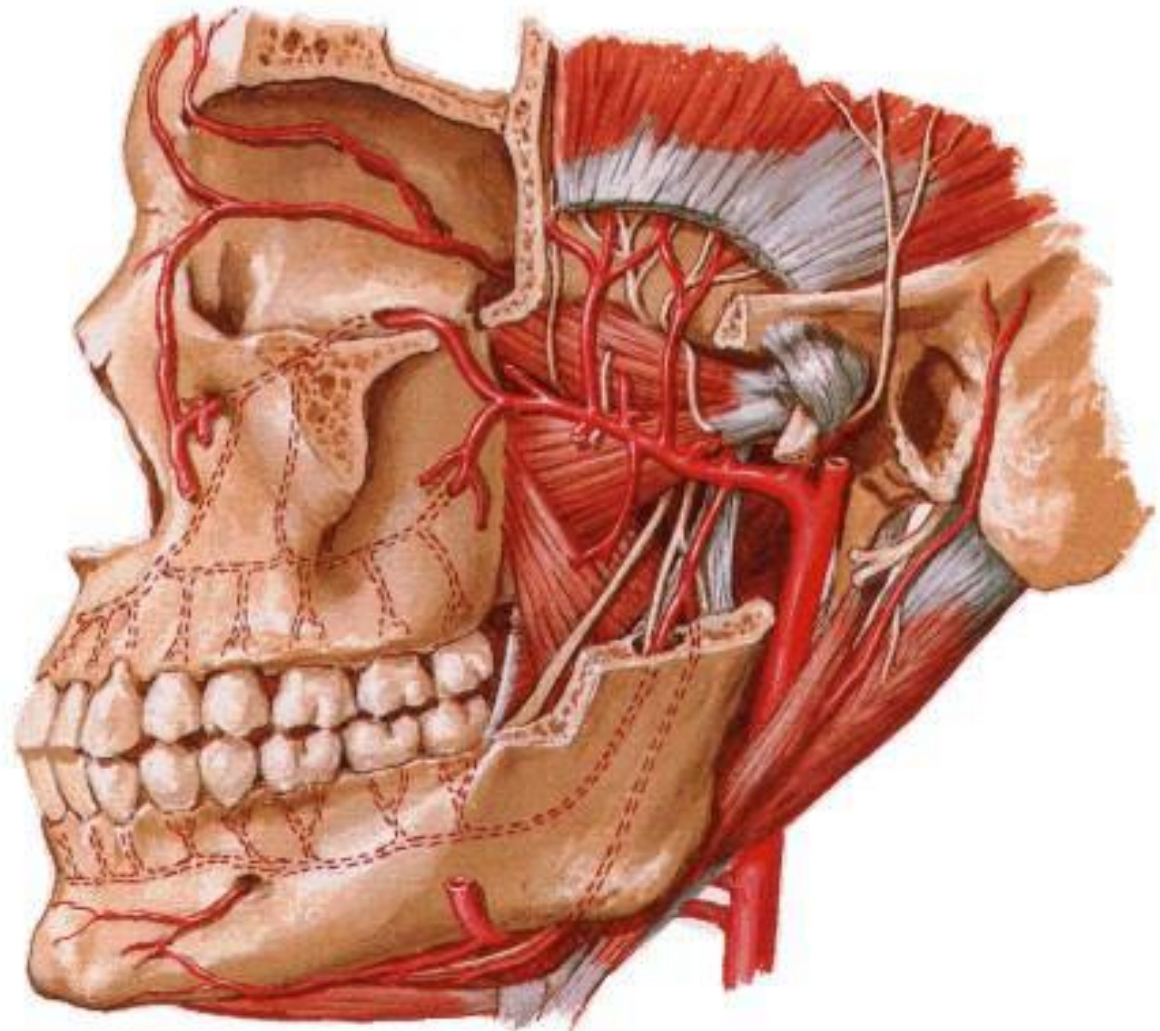
## Pars pterygoidea

arteria masseterica

arteriae temporales prof.

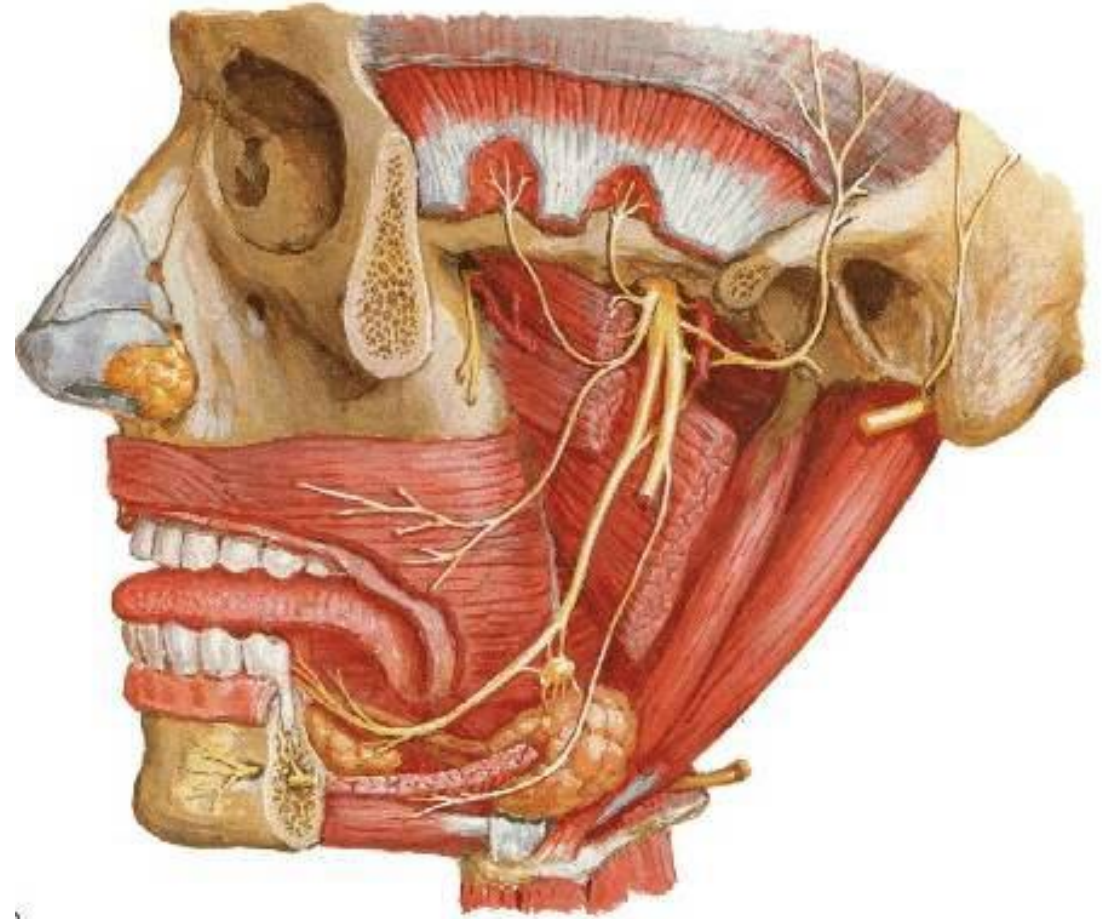
rr. pterygoidei

arteria buccalis



# Branches of the mandibular nerve in the infratemporal fossa

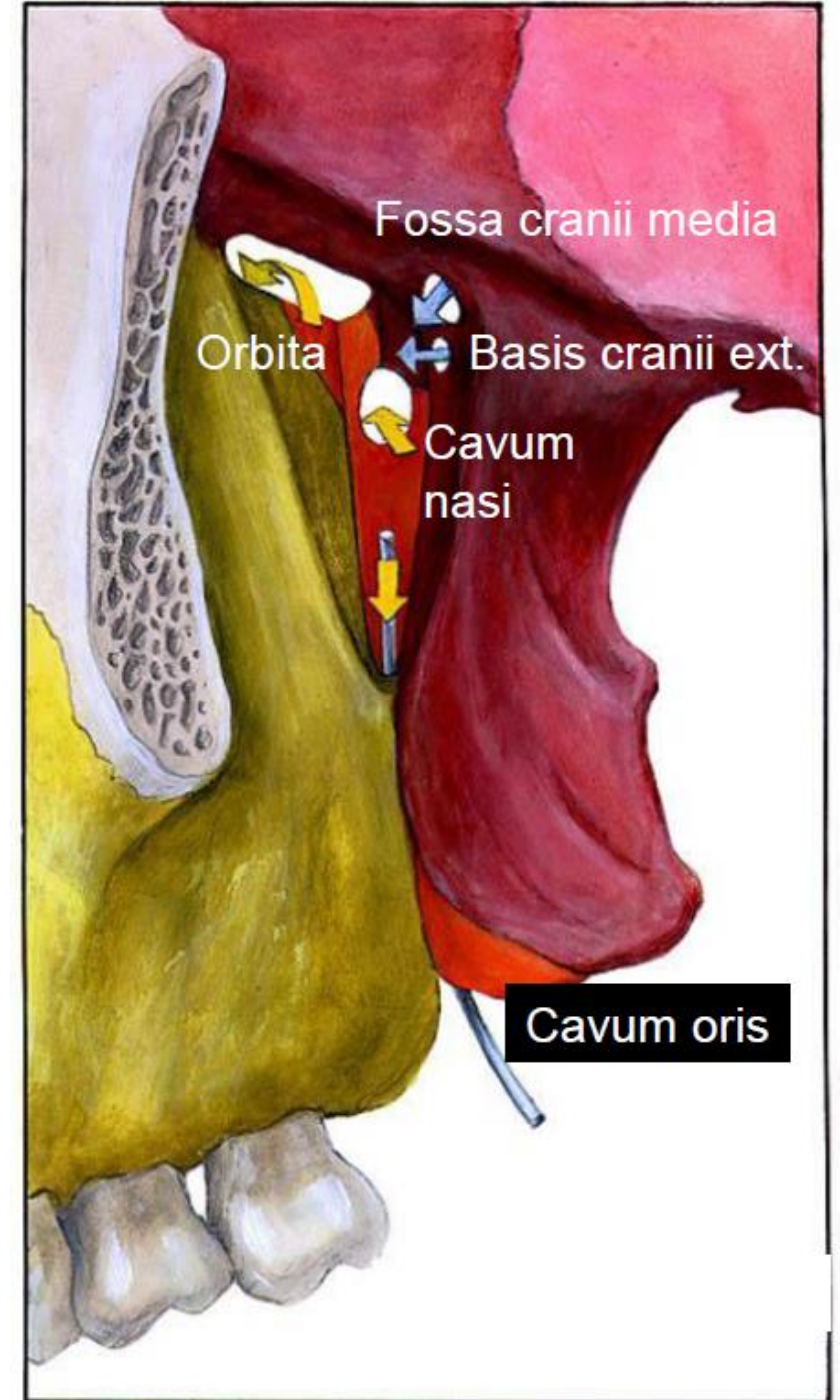
- **N. mandibularis**
- **N. buccalis**
- **N. lingualis**
- **N. alveolaris inf.**
- **n. mentalis**
- **R. mylohyoideus**
- **N. auriculotemporalis**

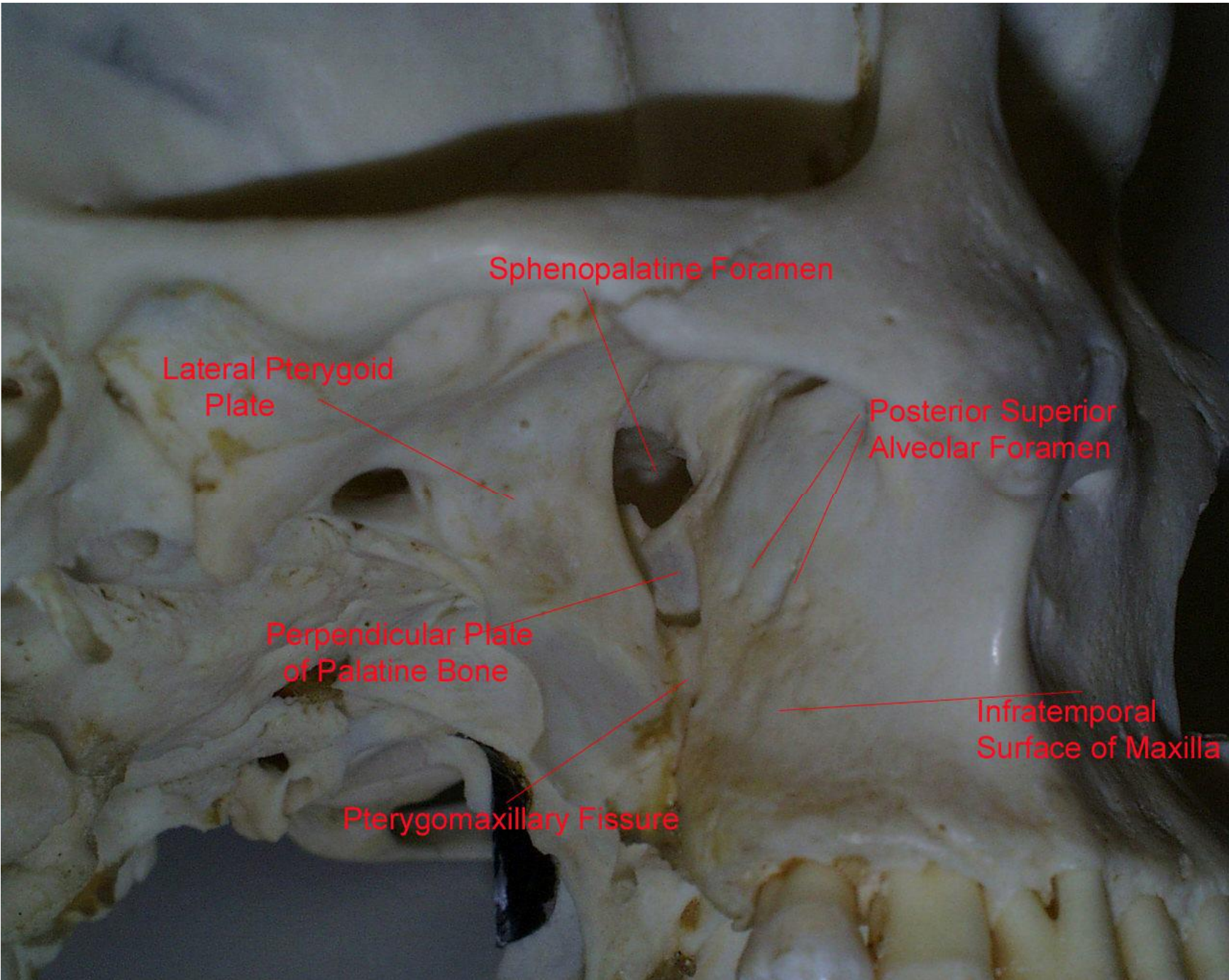




# Fossa pterygopalatina

- Upper wall
  - Facies maxillaris alae majoris ossis sphenoidalis
  - Foramen rotundum (fossa cranii media)
  - Fissura orbitalis inferior (orbita)
- Medial wall
  - lamina perpendicularis ossis palatini
  - Foramen sphenopalatinum (cavum nasi osseum)
- Ventral wall
  - tuber maxillae (foramina alveolaria)
- Dorsal wall
  - Processus pterygoideus ossis sphenoidalis
  - canalis pterygoideus (basis cranii externa)
- Caudally:
  - Canalis palatinus major (cavum oris)





# Branches of a. maxillaris – pars pterygopalatina

## Pars pterygopalatina

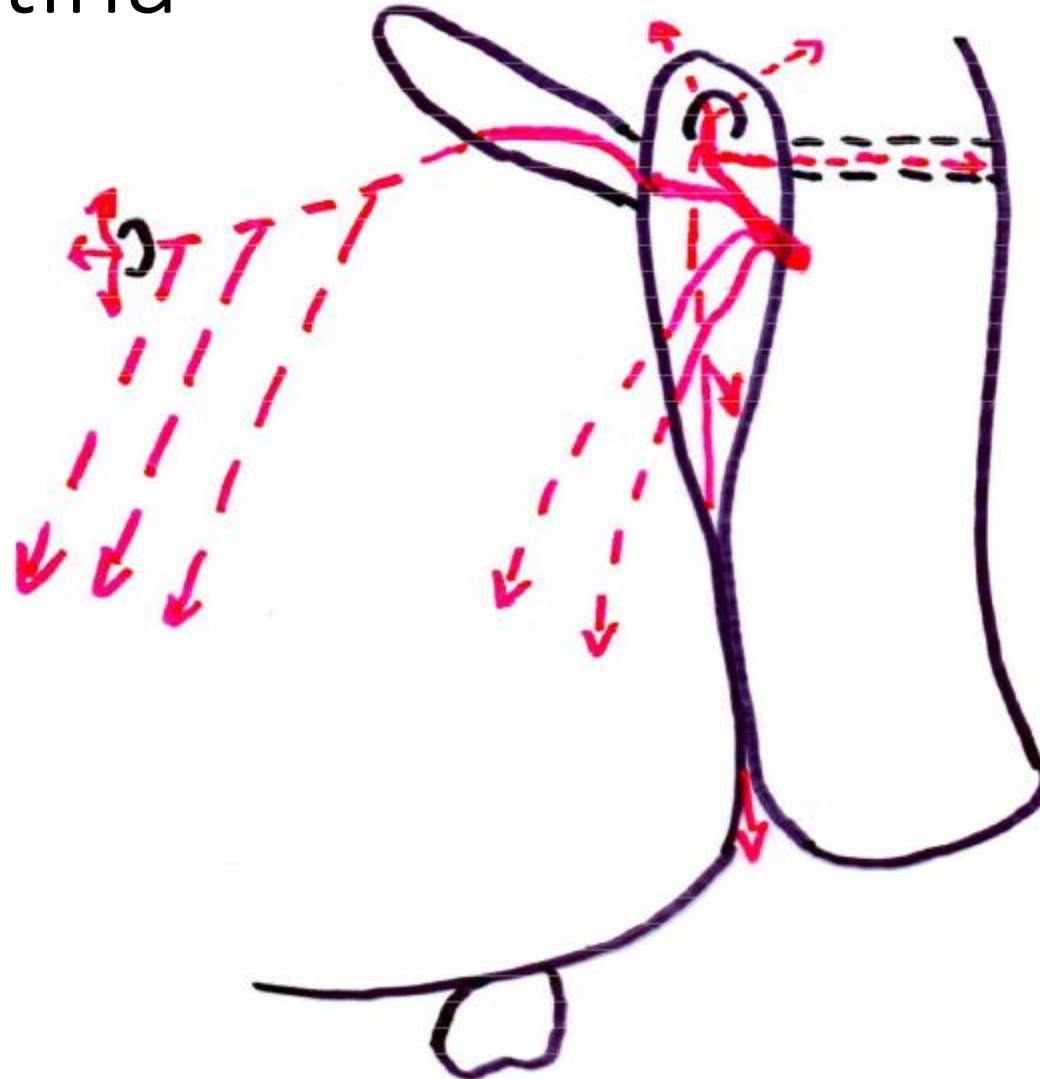
a. infraorbitalis

a. alveolaris sup. post.

a. palatina descendens

a. canalis pterygoidei

a. sphenopalatina



# Side view of fossa pterygopalatina (passages of nerves)

