

Orthodontics

Anomalies
of

Teeth

Groups of teeth

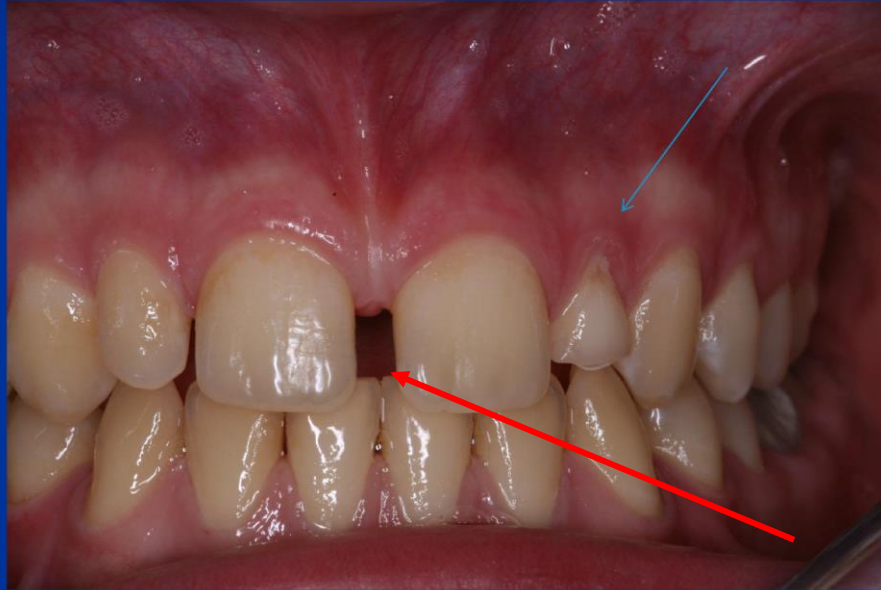
Jaws

Intermaxillary relation

Anomalies of tooth number

- Hypodontics (hypodontia) – the tooth (or teeth are missing)
- Third molars (if third molars are missing –it is not hypodontia), second premolars, upper lateral incisor
- Hyperodontics (hyperodontia) supernumerary teeth
- Anodontics (anodontia)

Anodontia 22, persistency 62



Diastema

Anomalies
of tooth size
(dimension)

Microdontics (microdontia)
– small teeth, spaces
between teeth

Macrodontics
(macrodontia) – big teeth,
crowding

Anodontia od 12, cone tooth 22



Anomalies of tooth position

Inclination

Rotation

Transposition

Infraocclusion

Supraocclusion

Vestibular, oral eruption

Diastema

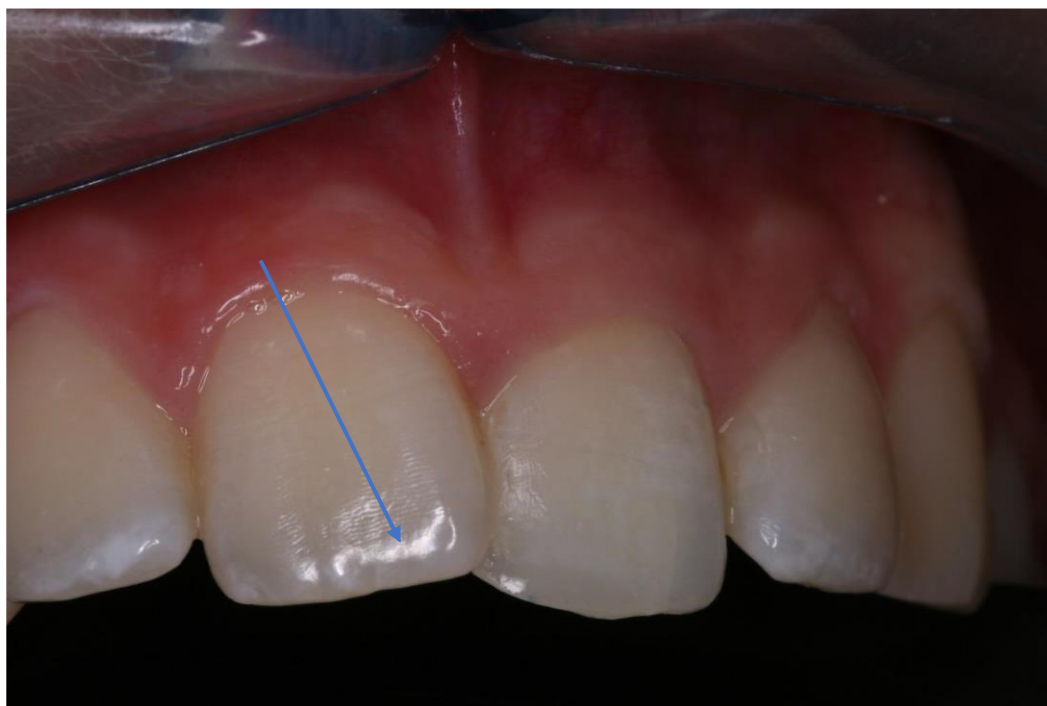


Inclination

Mesioinclination: the long axis is inclined mesially

Distoinclination: the long axis is inclined distally

Inclination



Inclination





Rotation

The tooth is rotated around the long axis:

-Mesiorotation – the vestibular surface is rotated mesially

- Distorotation – the vestibular surface is rotated distally

Rotation



Rotation

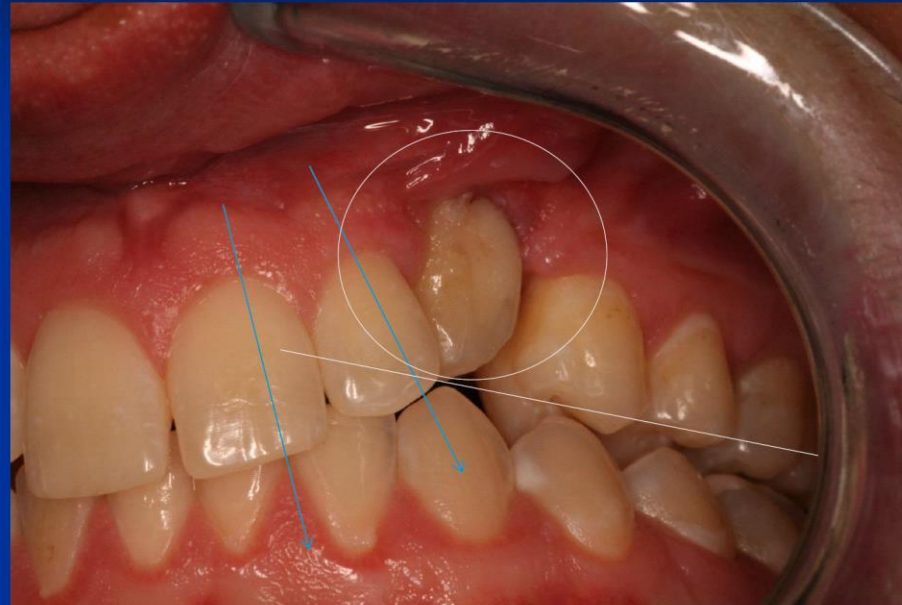


Supraocclusion



Infraocclusion

**Distoinclination 21, 22,
infraocclusion 23**



Vestibular eruption



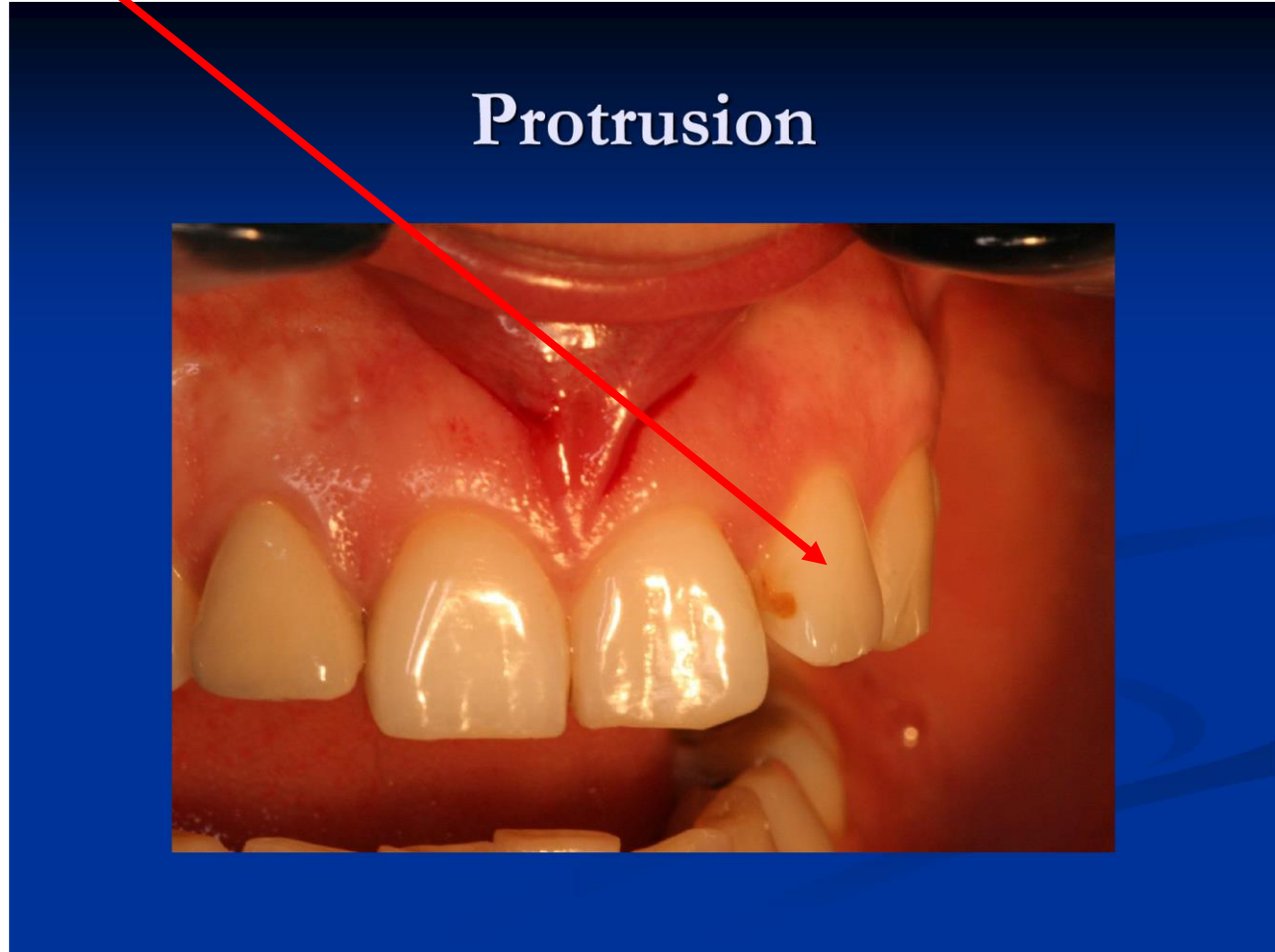
Diastema





Protrusion

The tooth is
declinated
vestibularly



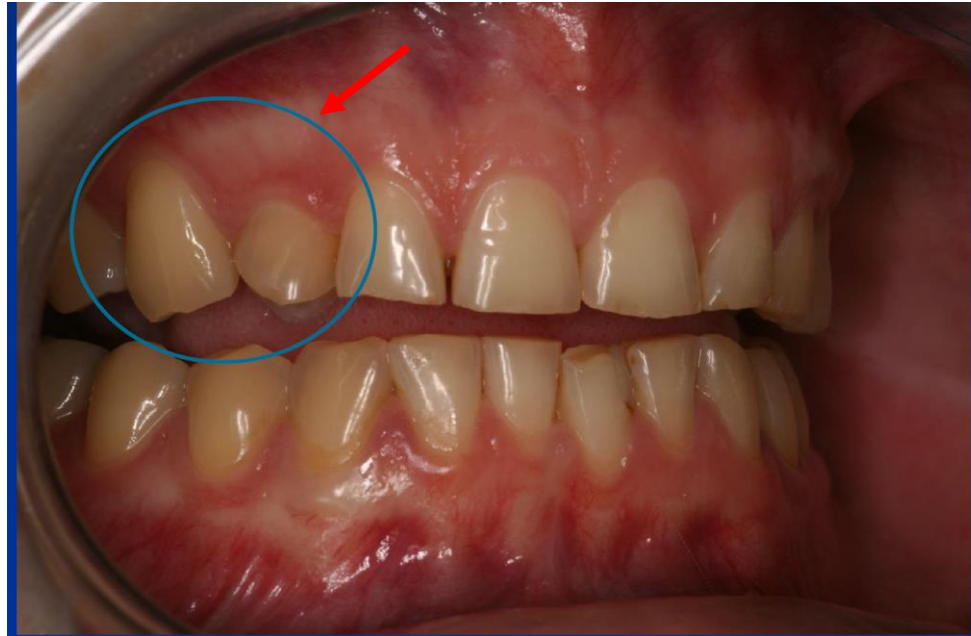
Retrusion



The tooth is
declinated orally

Transposition

- The position of teeth is exchanged



- Crowding

Is the result of lack of space in the dental arch

- Spacing

Is the result of excess of space in the dental arch

- Wide interdental spaces

Diastema

Space between the two central incisors

- Rotation

- The tooth is rotated in the longitudinal axis

Spacing – trema,

diastema



Crowding



Intermaxillary relationships

- Key of occlusion acc to Angle – position of first molars – maxillary and mandibular

Key of
occlusion
acc. to
Angle

Normoocclusion
(normoocclusia)

Distoocclusion – mandible is in
posterior position (distoocclusia)

Mesioocclusion – mandible is in
anterior position (mesioocclusia)

Angle class I

- The mesiobuccal cusp of the maxillary first molar lies in the mesiobuccal groove of the mandibular first molar, but the other teeth may have other anomalies such as spacing, crowding, open bite etc

Angle

Class I

The mesiobuccal cusp of the maxillary first molar lies in the mesiobuccal groove of the mandibular first molar, but the other teeth may have other anomalies such as spacing, crowding, open bite etc.



Angle class II

The mesiobuccal cusp of the upper molar is situated anterior to the mesiobuccal groove

Two subdivisions exist: n Division 1 (II/1) --> Anterior teeth protrude, increased overjet n

Division 2 (II/2) --> Central incisors retrude, lateral incisors protrude

Angle class II.



Class II/1



Class II/2

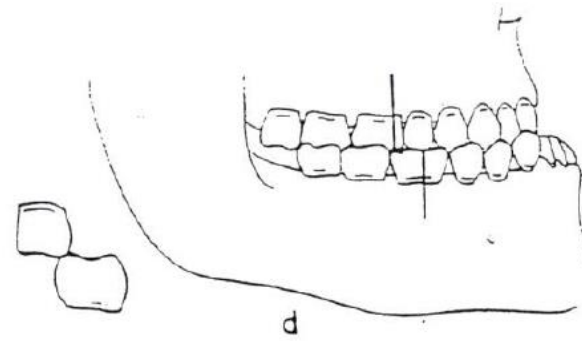
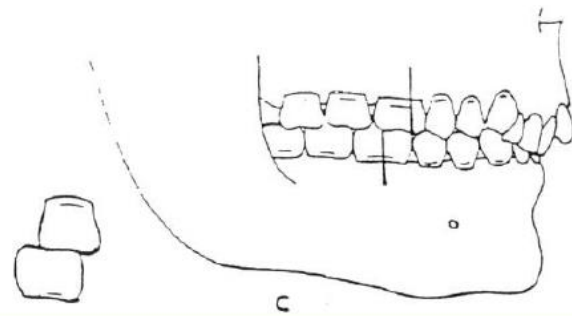
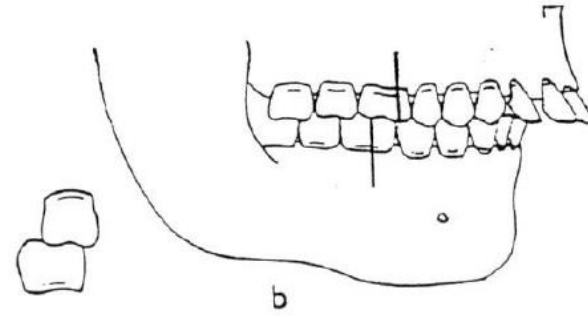
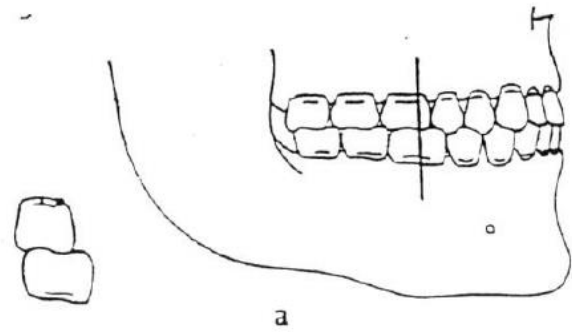
Angle class III.

- The mandible is in anterior position

- Class III
- Is also called Mandibular Prognathism
- The mesiobuccal cusp of the upper molar lies posteriorly to the mesiobuccal groove of the first mandibular molar



Class III



Overjet

- Is the distance between the tip of the upper and the tip of the lower incisors in the horizontal plane
- The normal distance is $\sim 1.5-2.5$ mm
- We distinguish two types of overjet:
- Positive overjet \rightarrow Distance >2.5 mm
- Negative overjet (anterior cross bite) \rightarrow Distance <1.5 mm

Positive overjet

Negative overjet



Anterior cross bite



Overbite

- Normally the upper centrals should cover between $1/3$ - $1/4$ of the anterior surface of the lower centrals
- Any disturbance in this coverage can result in:
 - Open Bite
 - Deep Bite

Deep bite



Open bite



**Mandibular prognatism, inverted
bite, infraocclusion, crowding,
open bite**



Scissor Bite

- Is a rather rare orthodontic malocclusion, where the palatal surface of the upper molars rest laterally from the buccal surface of the mandibular molars



Posterior Cross Bite

- In this malocclusion the buccal cusps of the upper molars lie in the opposing central fossa of the mandibular molars (in physiological conditions the **palatal cusps** of the upper molars lie in the opposing central fossa)



Mesioocclusion, posterior cross bite



Midline Deviation

- Occurs when the midline of the upper jaw doesn't coincide with that of the lower jaw



Prevention of orthodontic anomalies

Reasons

- Genetic factors
- Loss of primary teeth
- Persistency of primary teeth
- Insufficient function of masticatory apparatus
- Mouth breathing
- Parafunctions (sucking of thumb, dummy, put the lip between teeth etc.)

Prevention of orthodontic anomalies

Prevention

- Natural food admission (nursing, later chewing)
- Care for primary dentition
- Avoid parafunction

Therapy Orthodontic appliances

- Passive (functional – always removable)

Enable the change of position of jaws and teeth through the function.

- Active

Affect active forces on teeth (removable, fixed)

- Removable – desk appliances (active components- e.g. screws)
- Fixed (brackets, wire)

