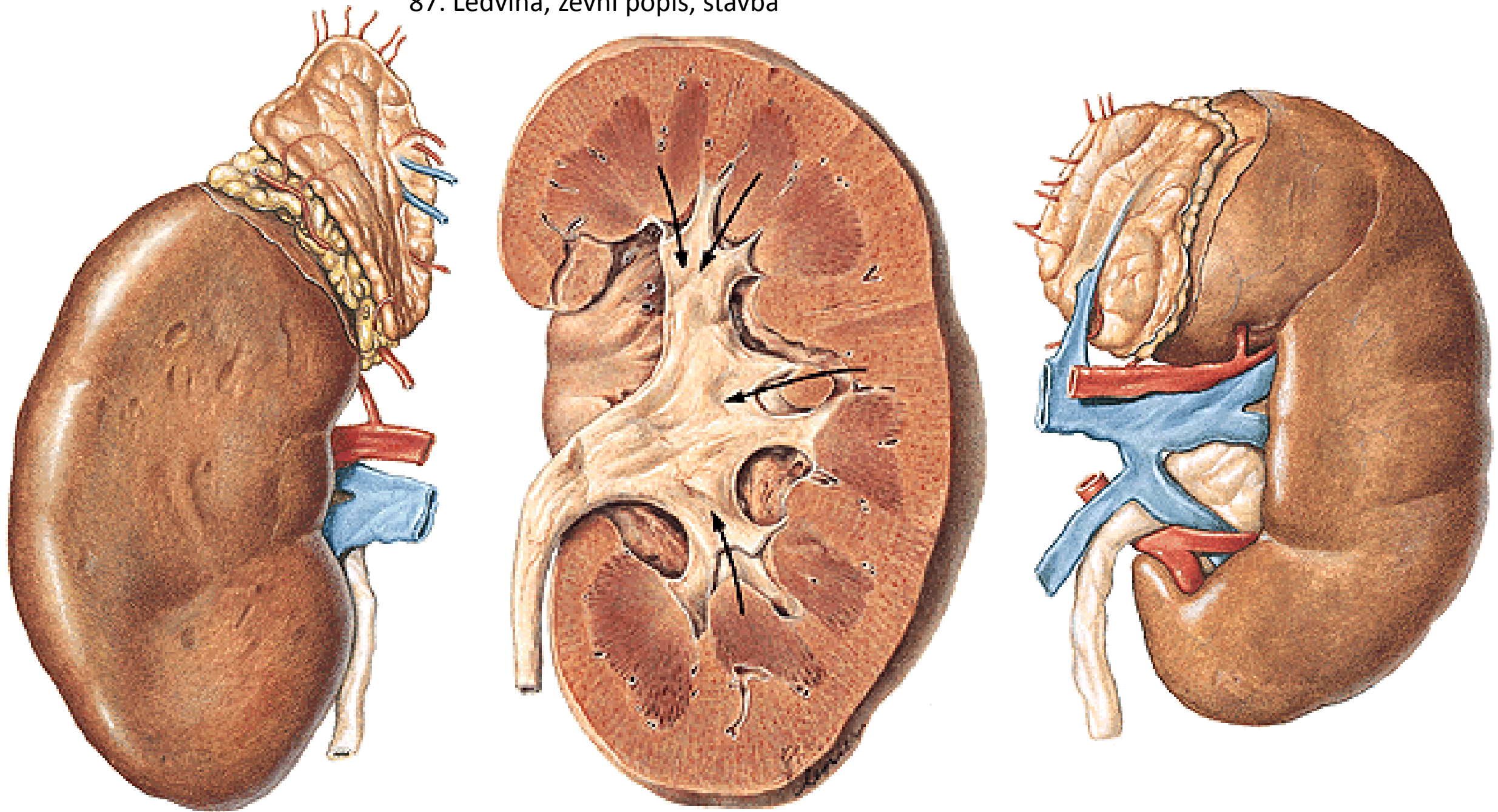
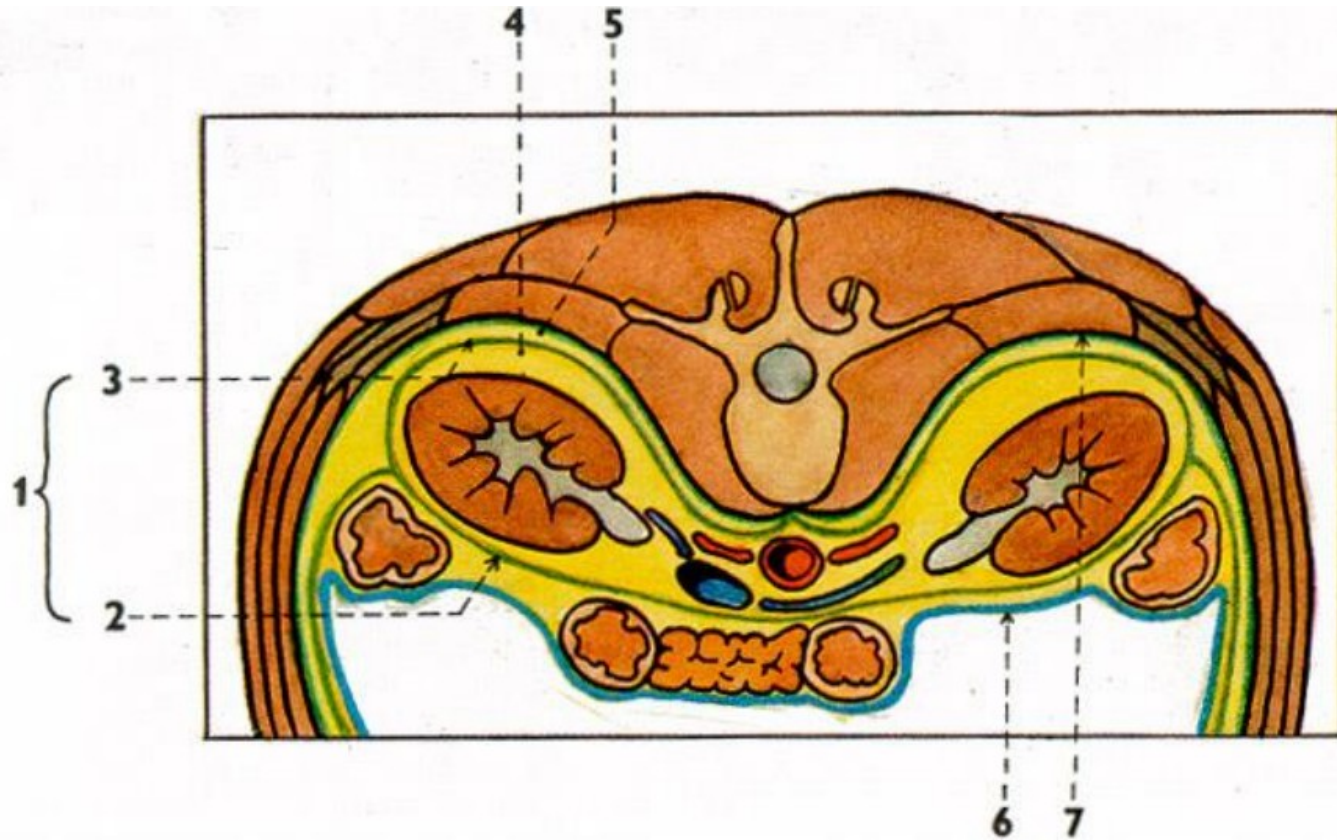


MOČOVÝ A MUŽSKÝ POHLAVNÍ SYSTÉM

87. Ledvina, zevní popis, stavba

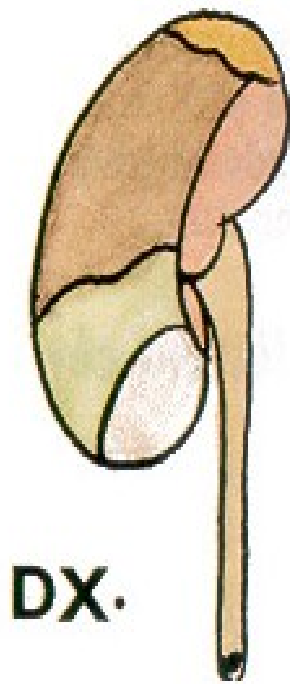


89. Syntopie ledvin, obaly a fixace

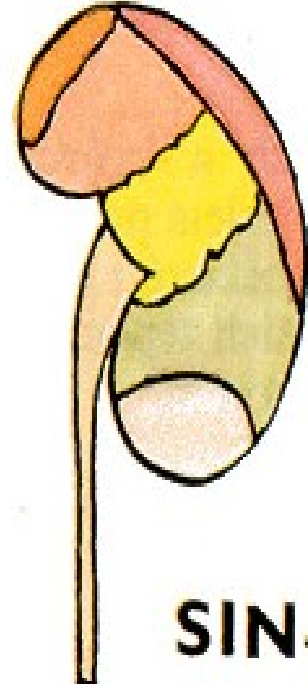


- 1 - fascia renalis *Gerotae*
- 2 - lamina prerenalis *Toldtii*
- 3 - lamina retrorenalis *Zuckermandeli*

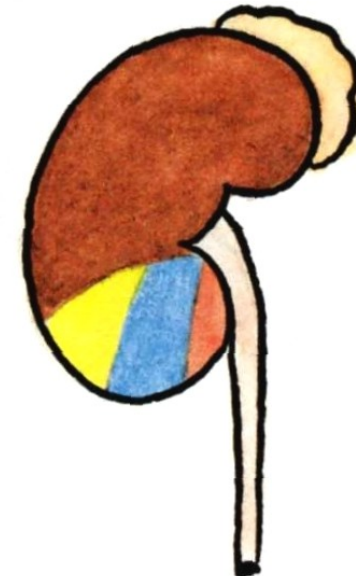
- 4 - corpus adiposum perirenale
- 5 - corpus adiposum pararenale
- 6 - peritoneum
- 7 - fascia transversalis



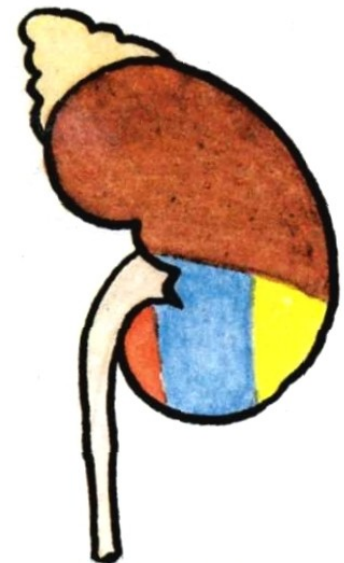
DX.



SIN.

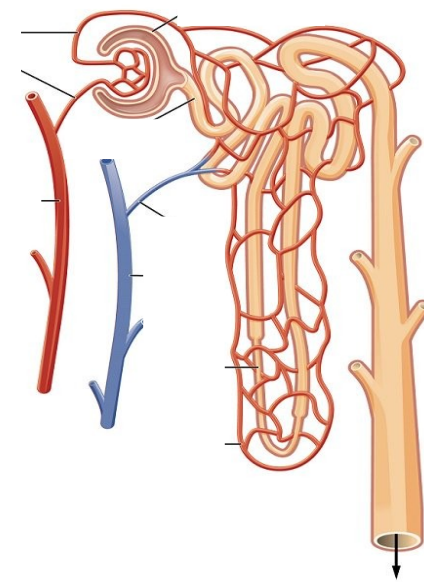
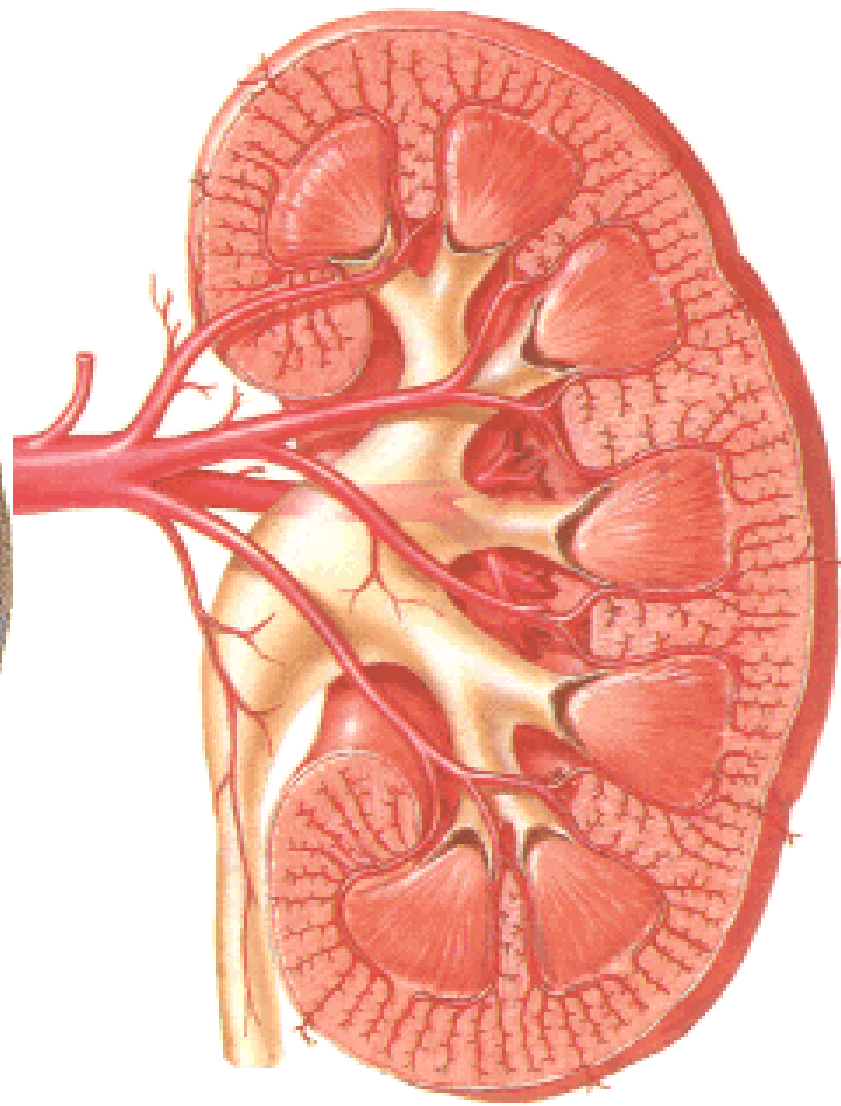
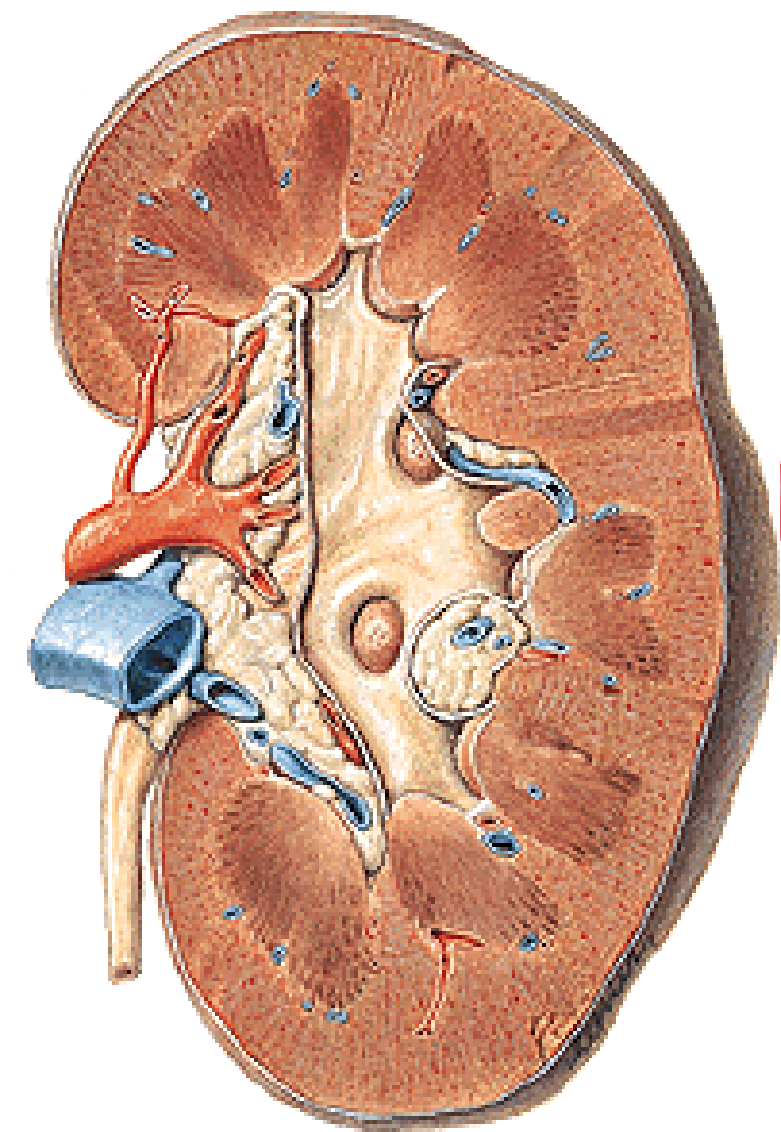


SIN.

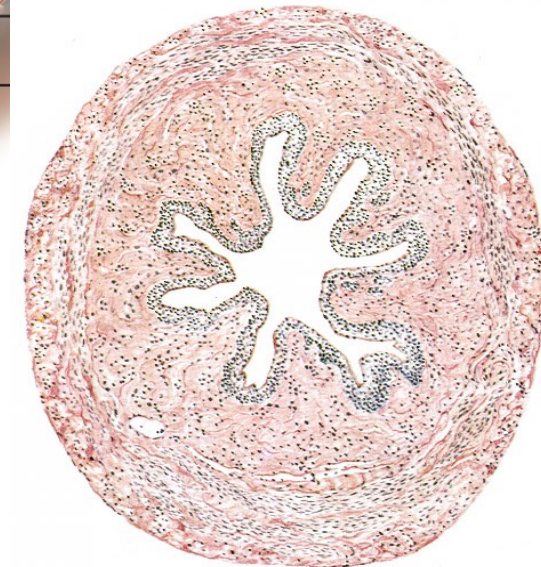
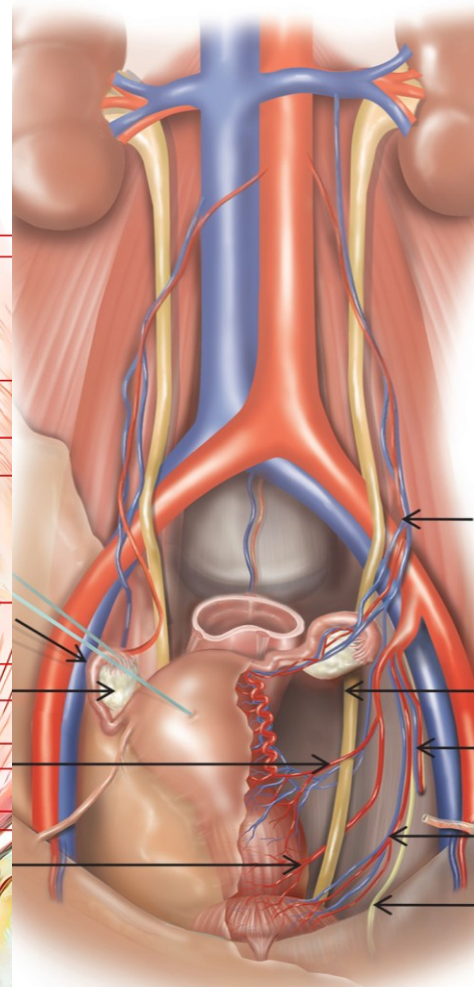
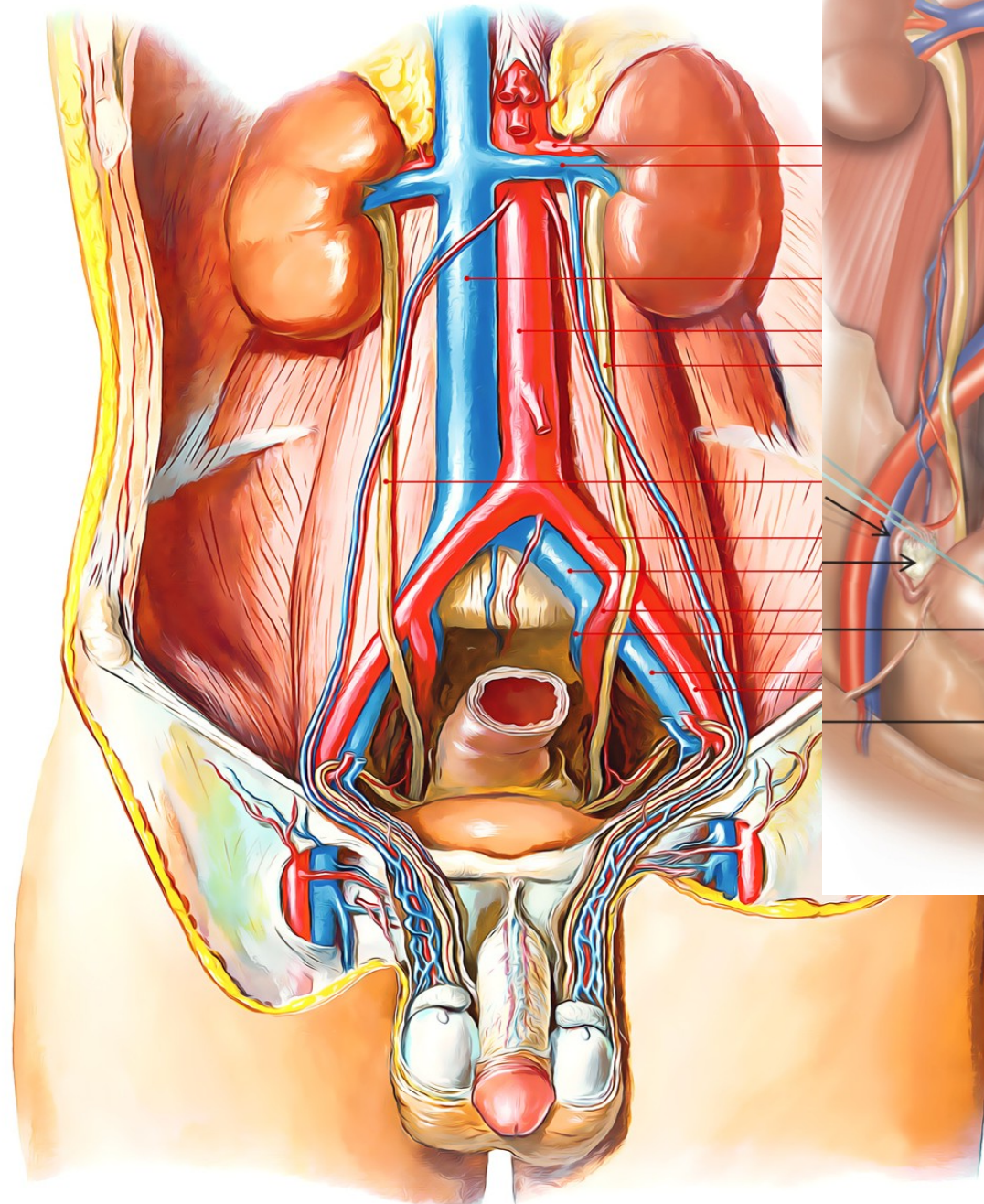
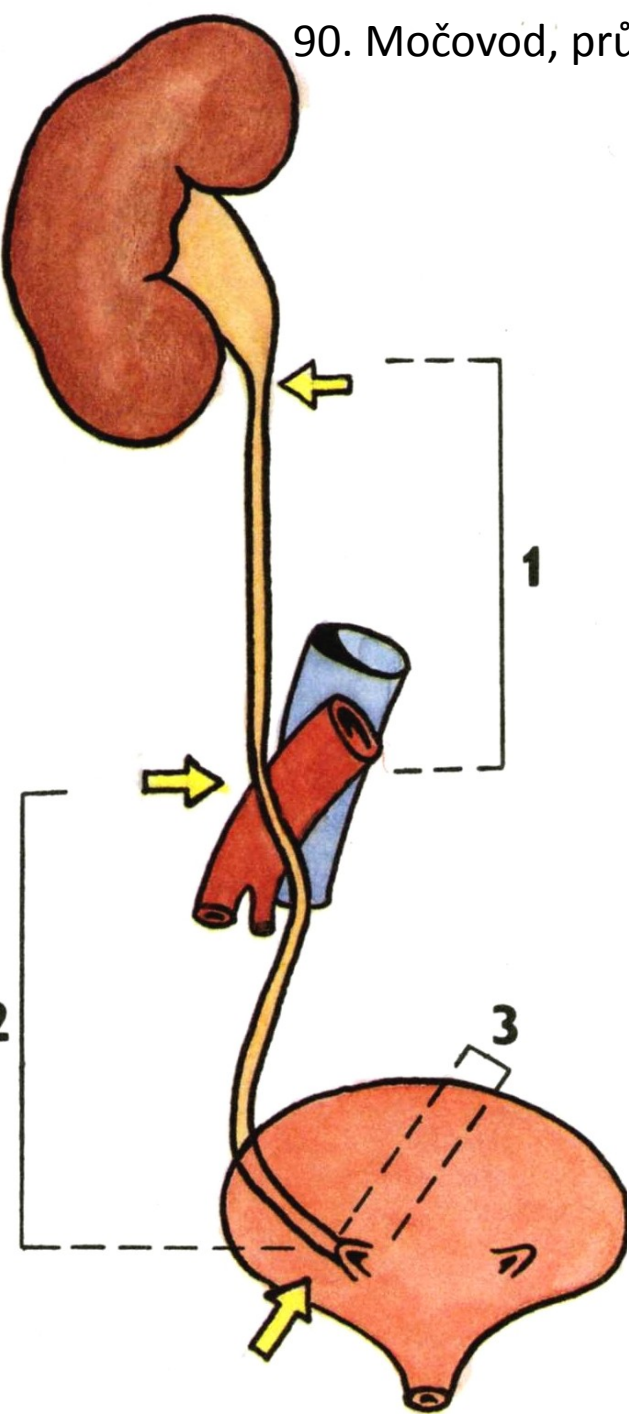


DX.

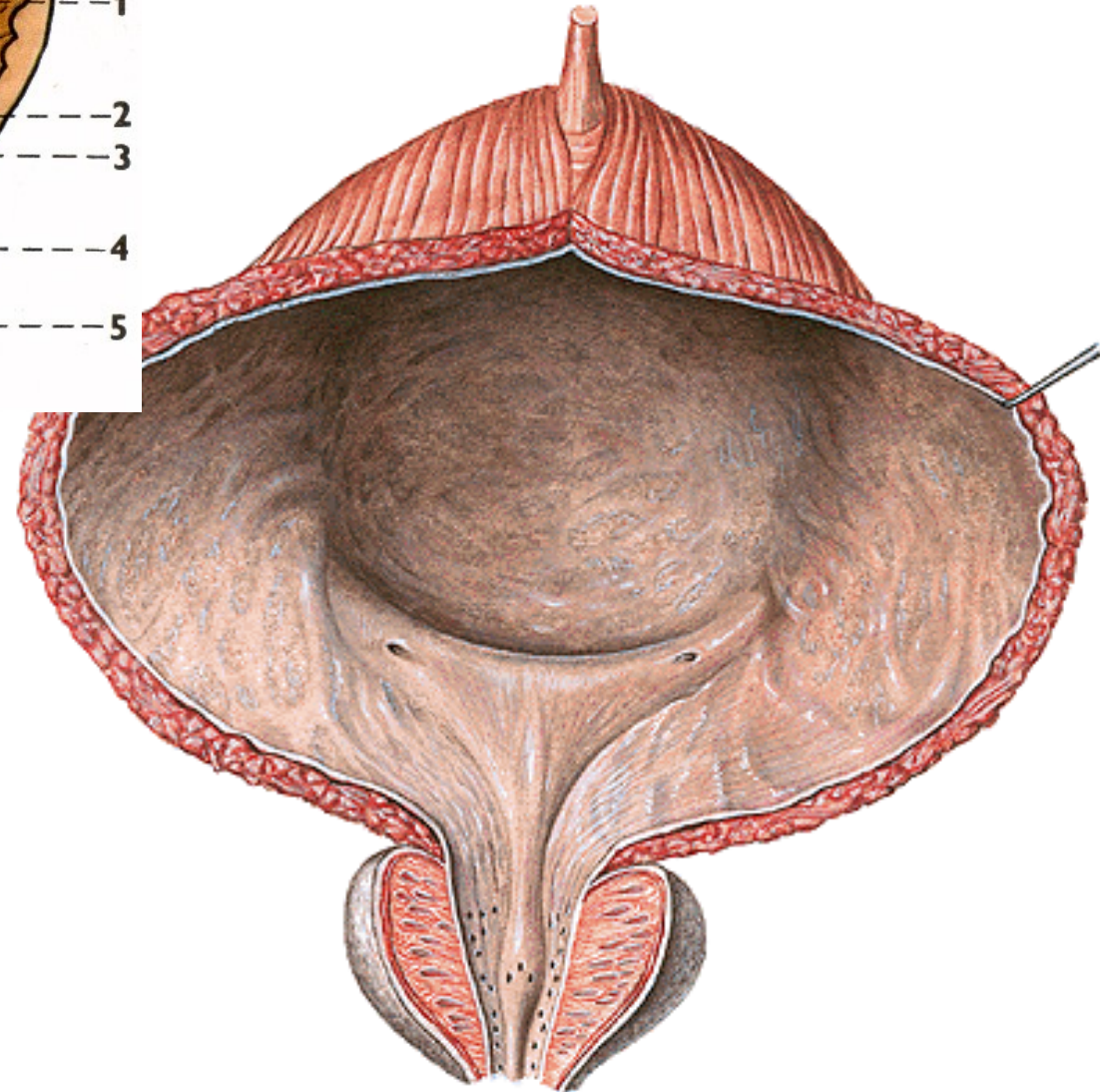
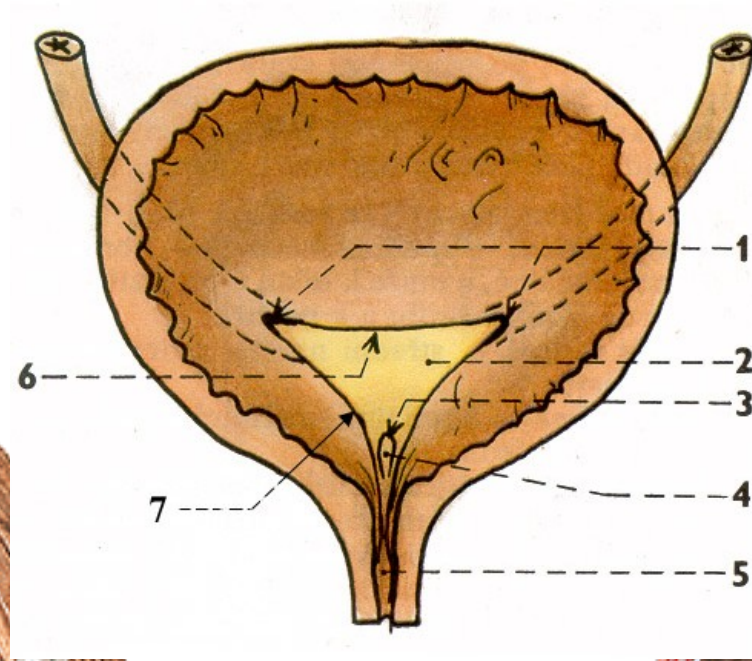
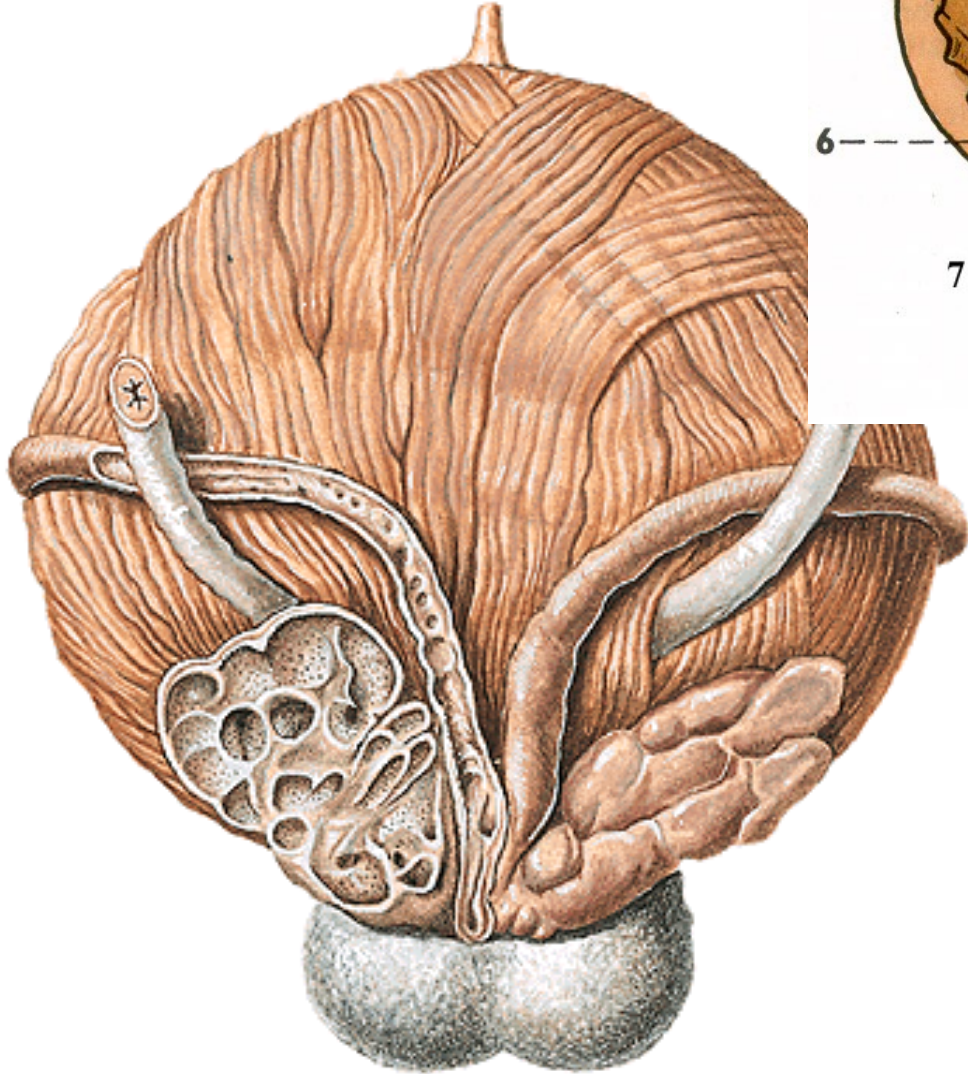
88. Ledvinné kalichy, ledvinná pánevka, vaskularizace ledvin

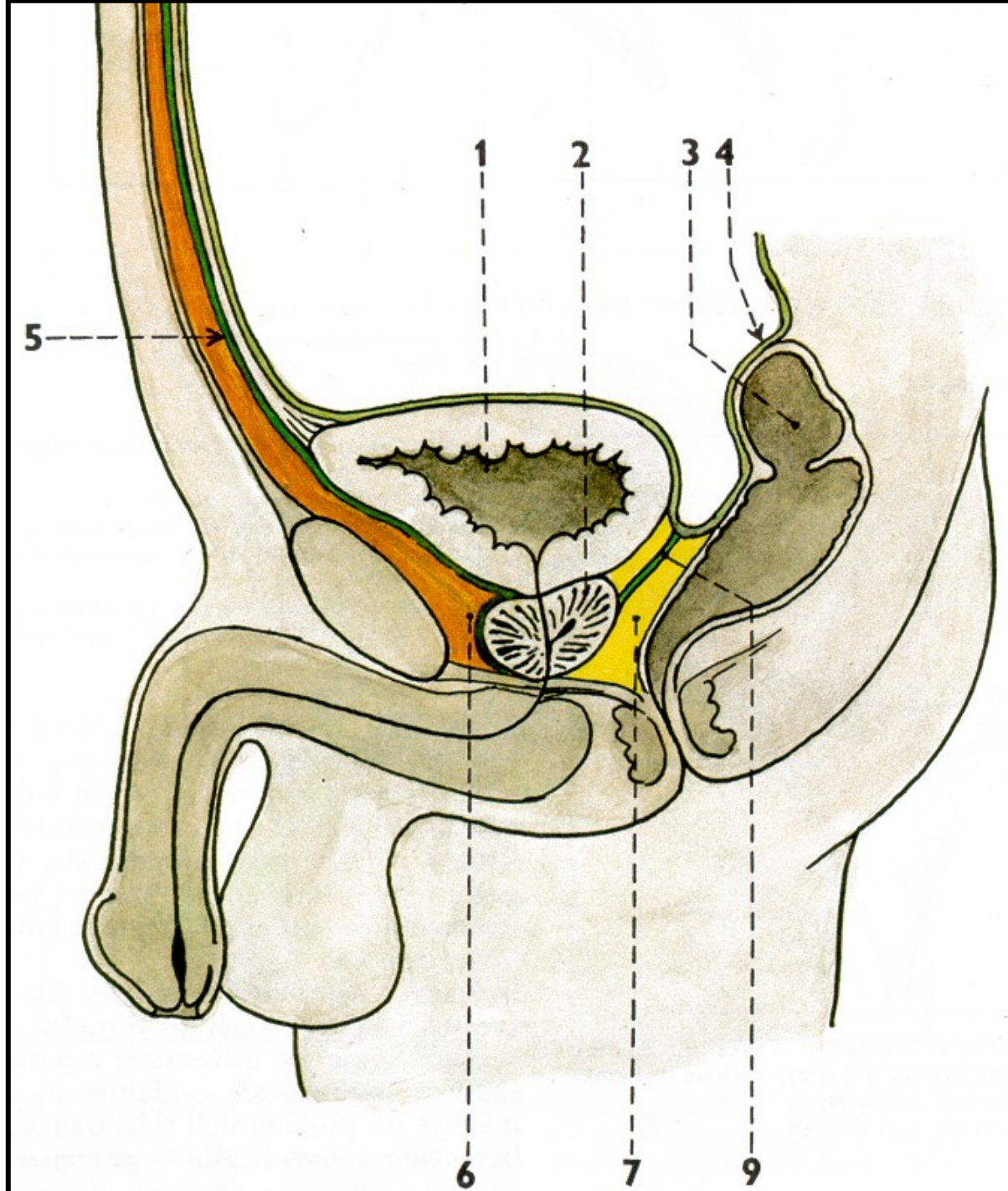
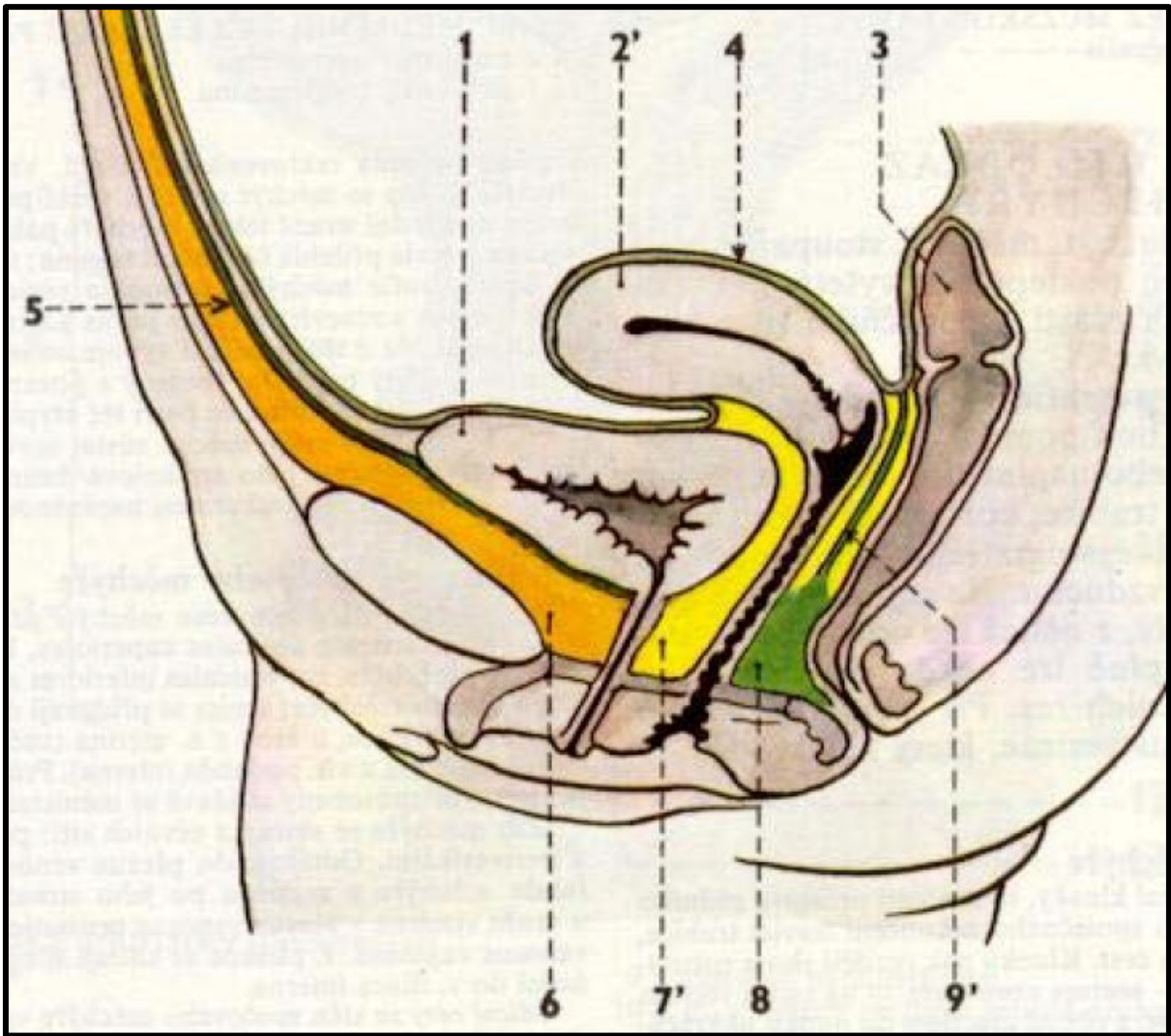


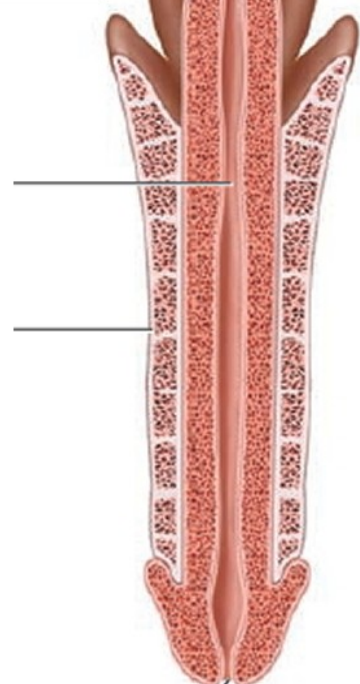
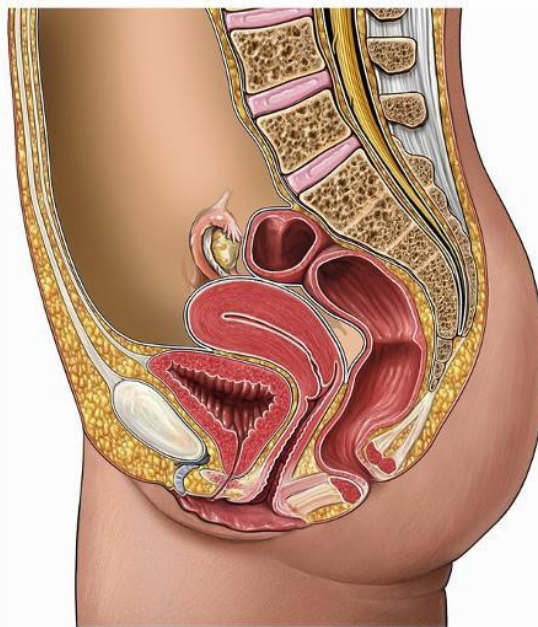
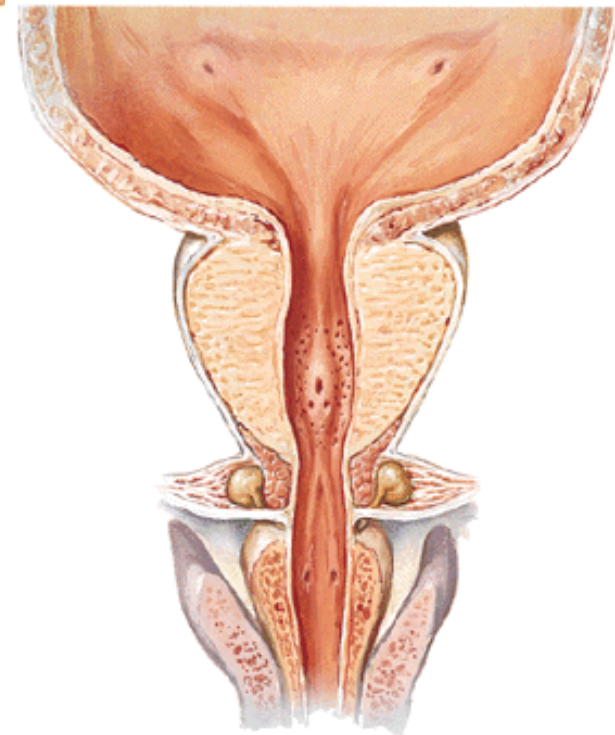
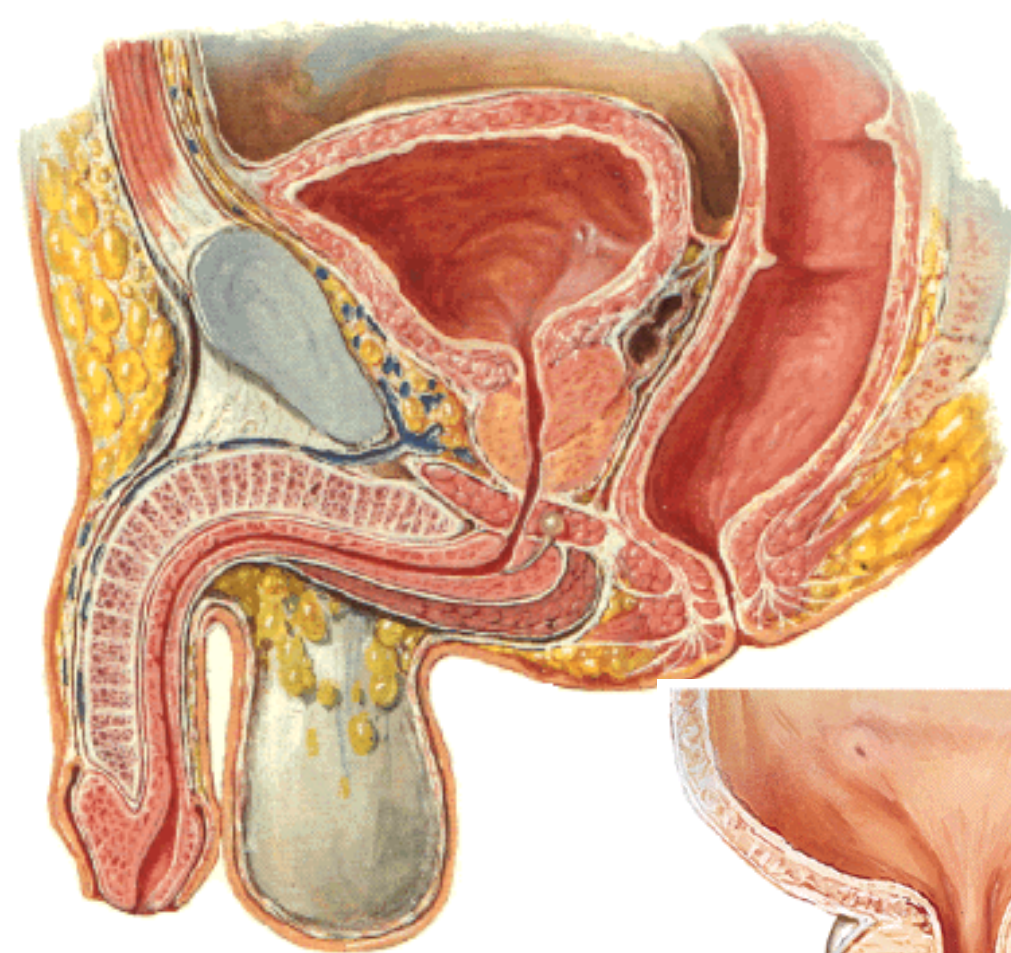
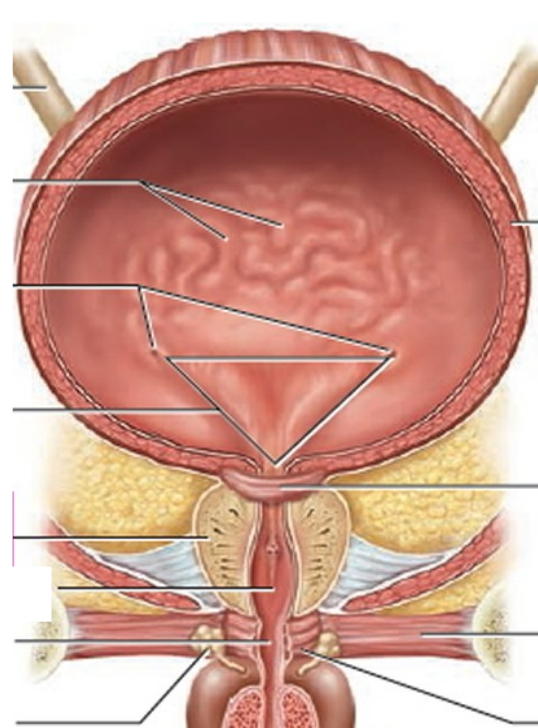
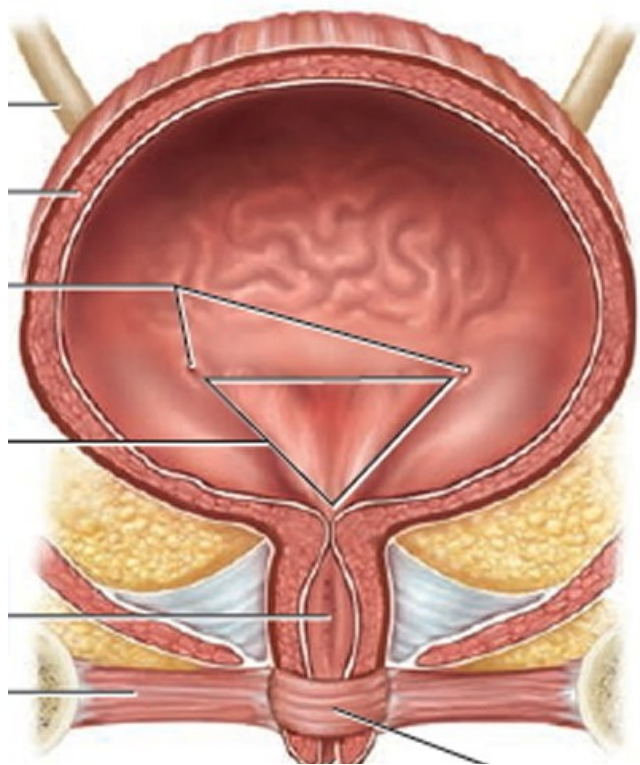
90. Močůvod, průběh, syntopie, zůžení



91. Močový měchýř, popis, syntopie





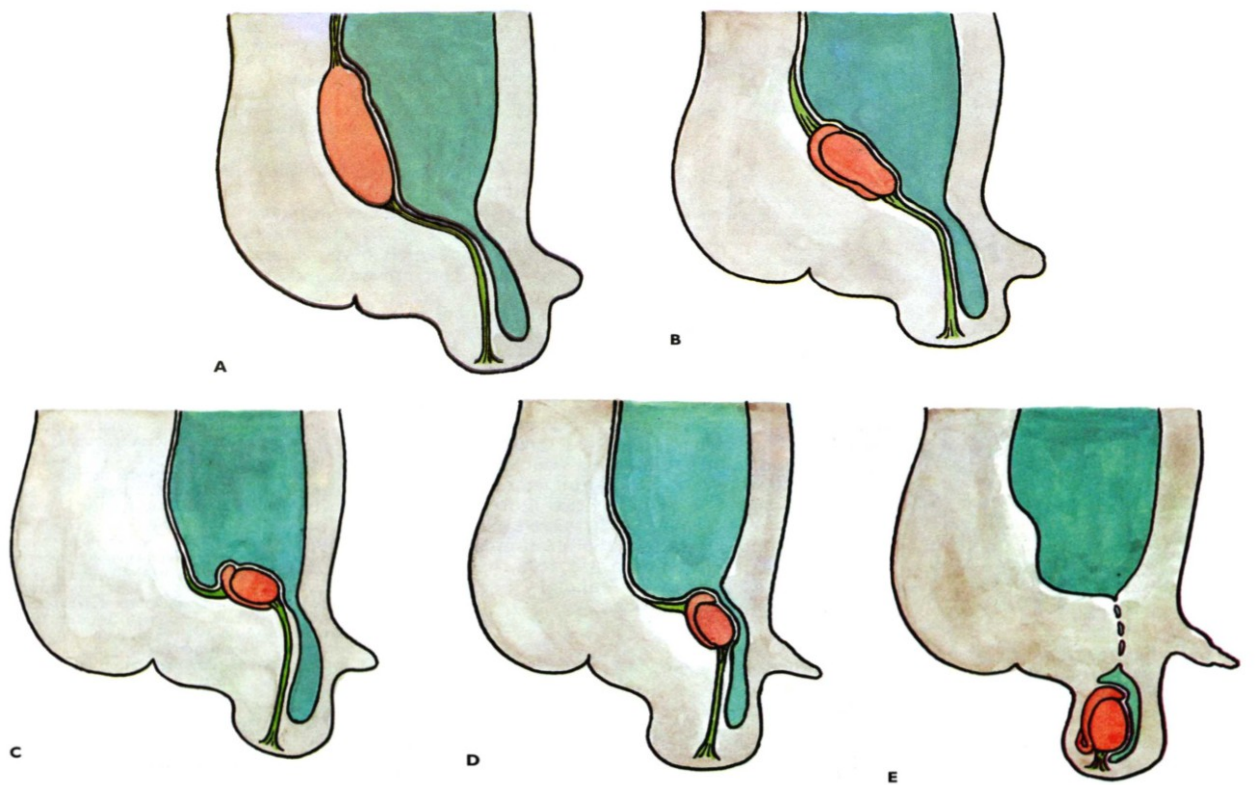
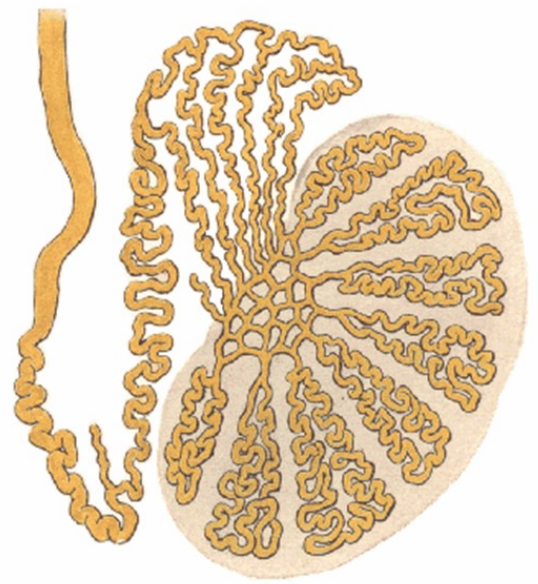
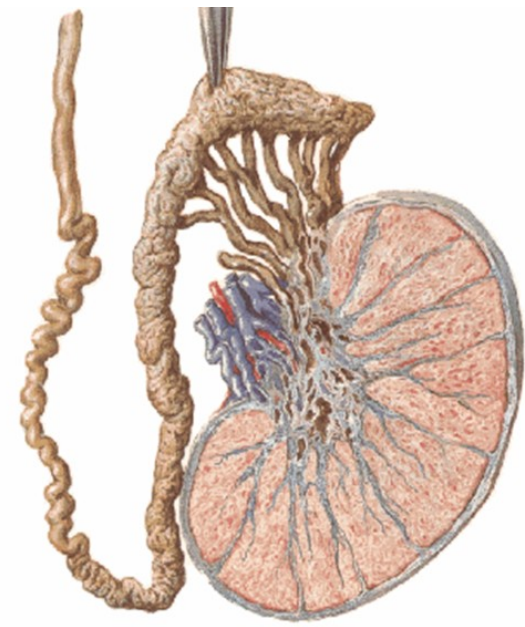
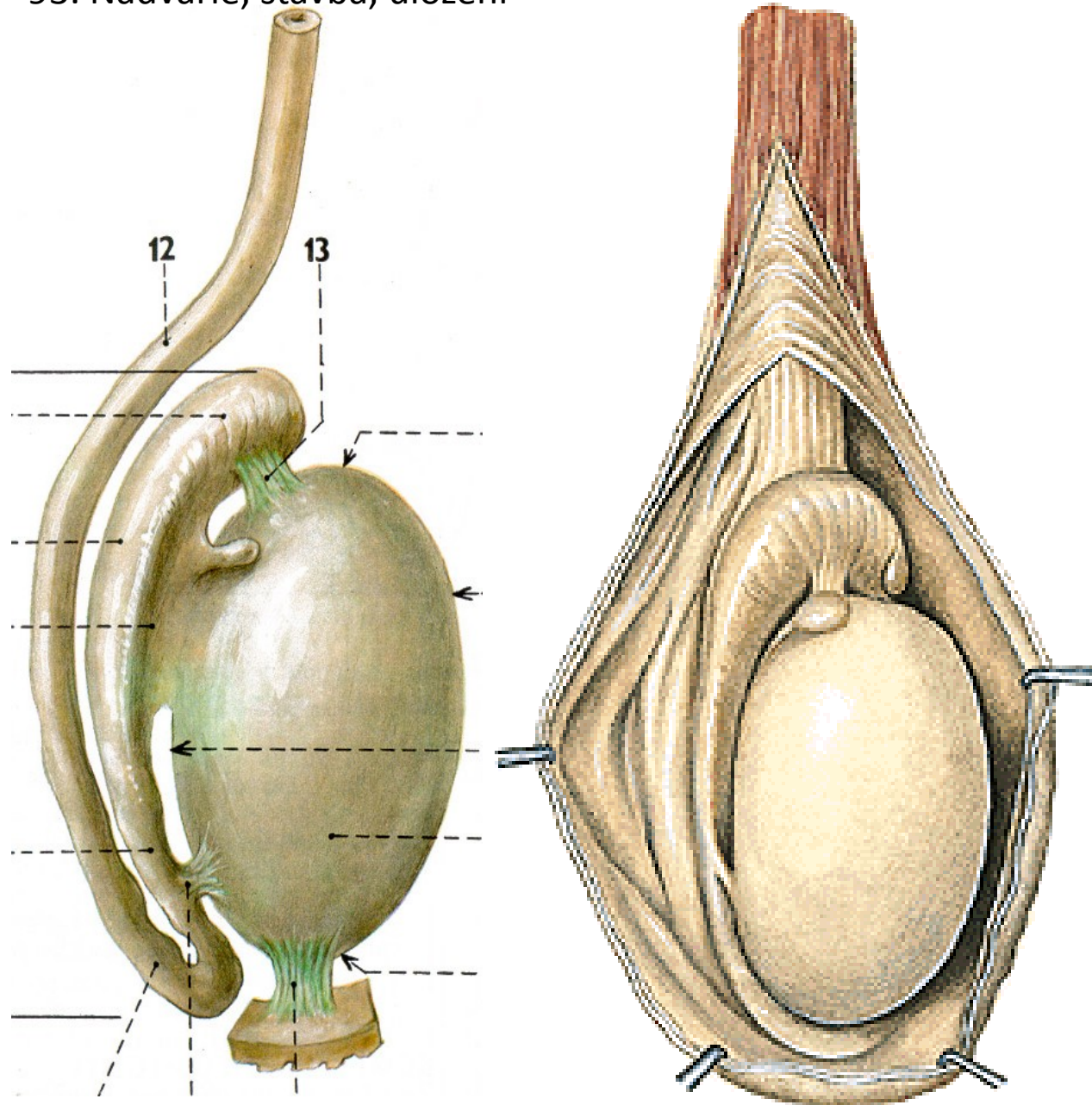


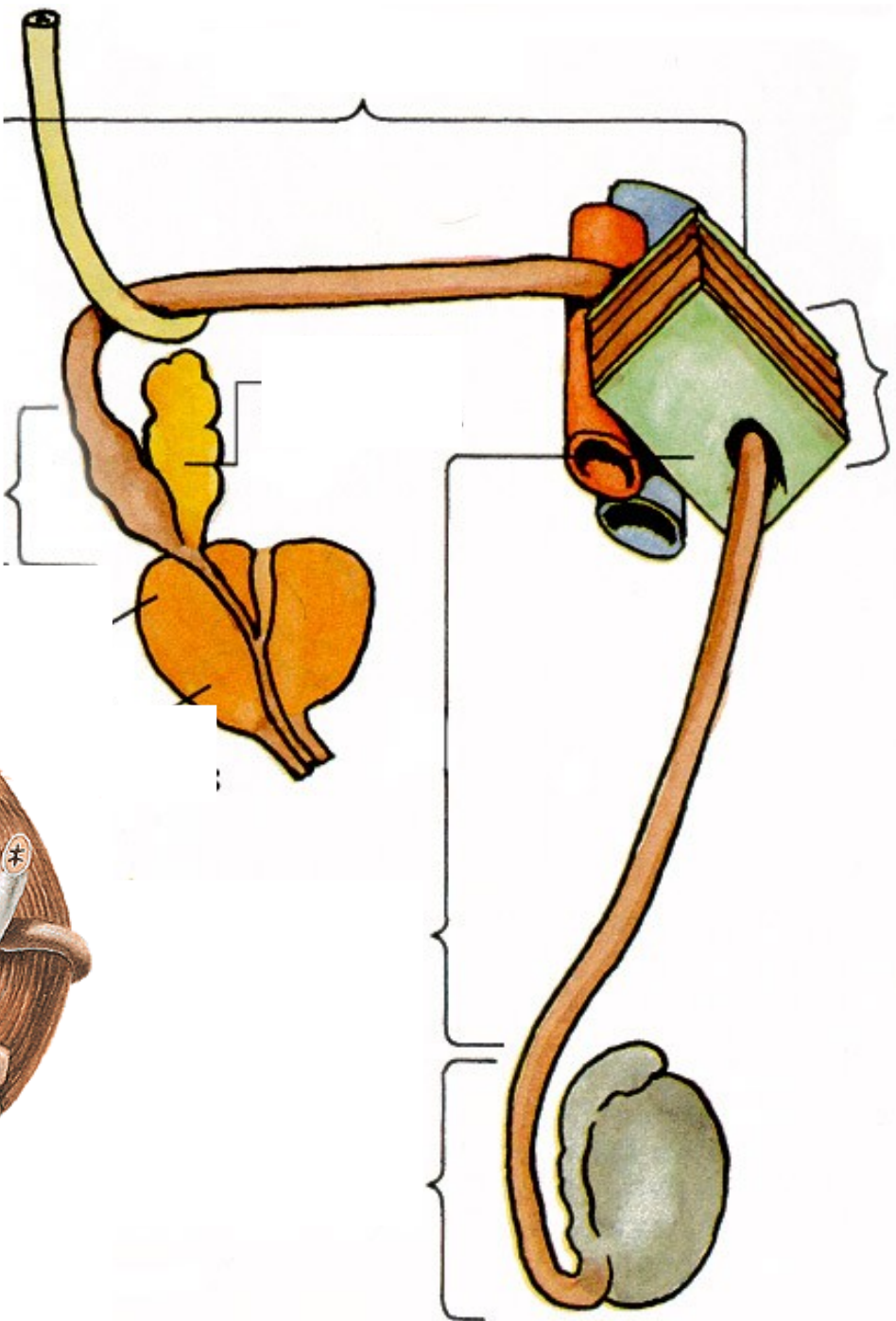
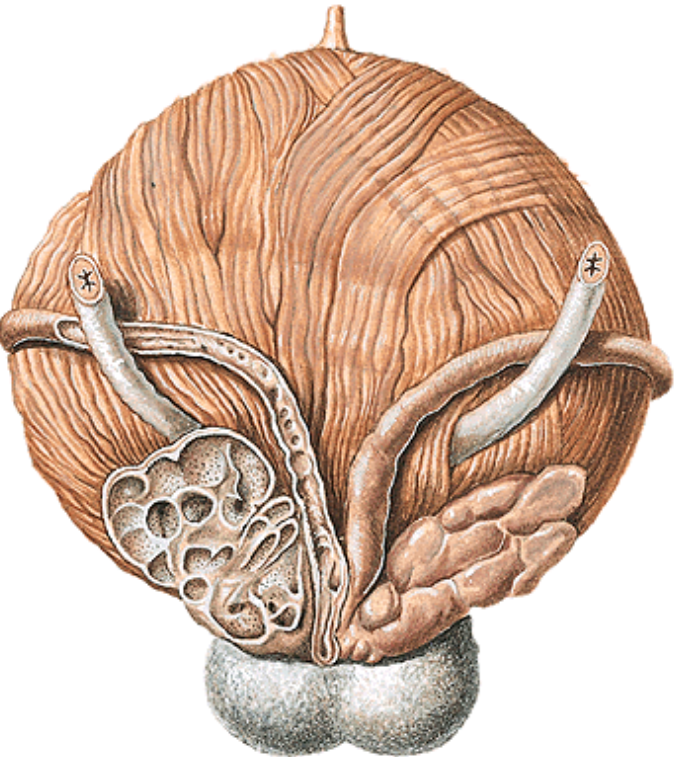
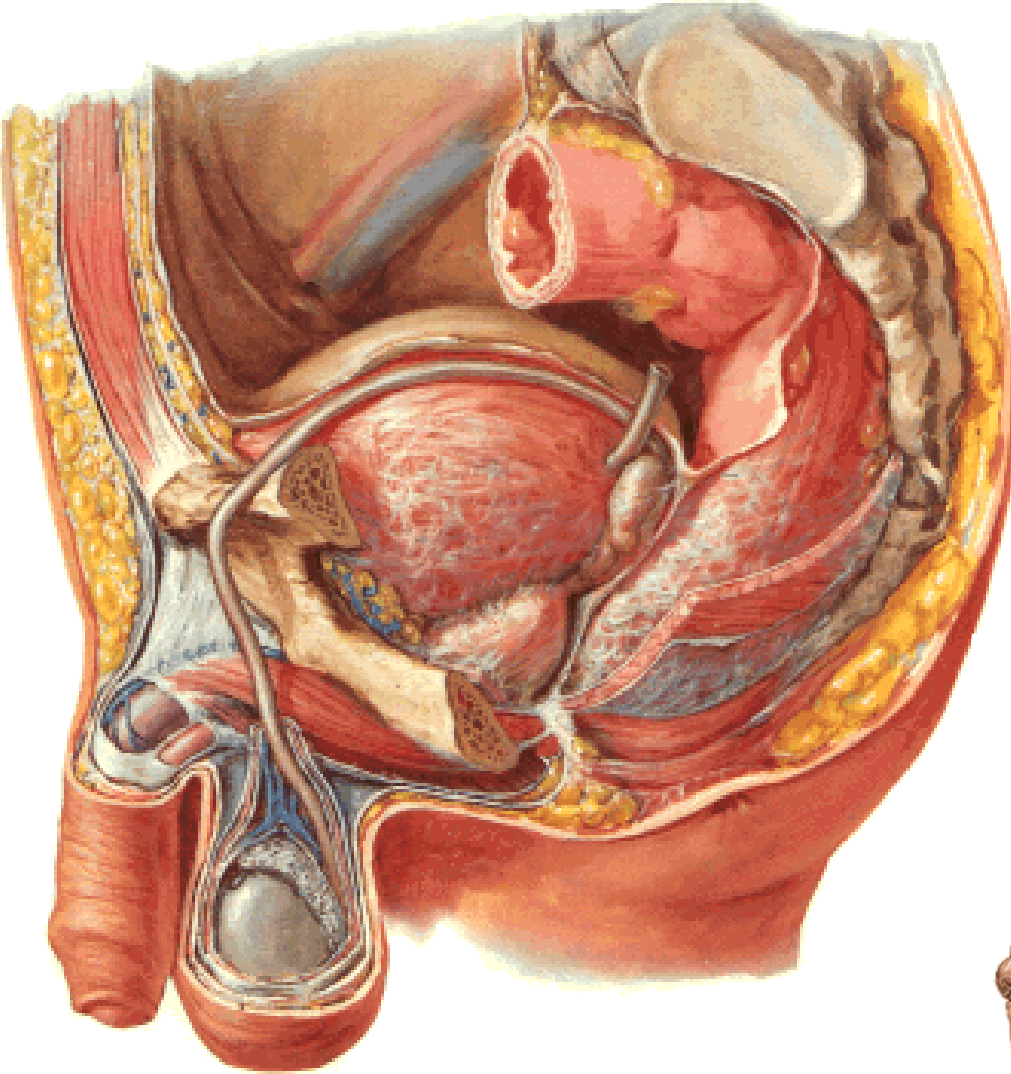
99. Mužská močová trubice

106. Ženská močová trubice

92. Varle, descensus testis

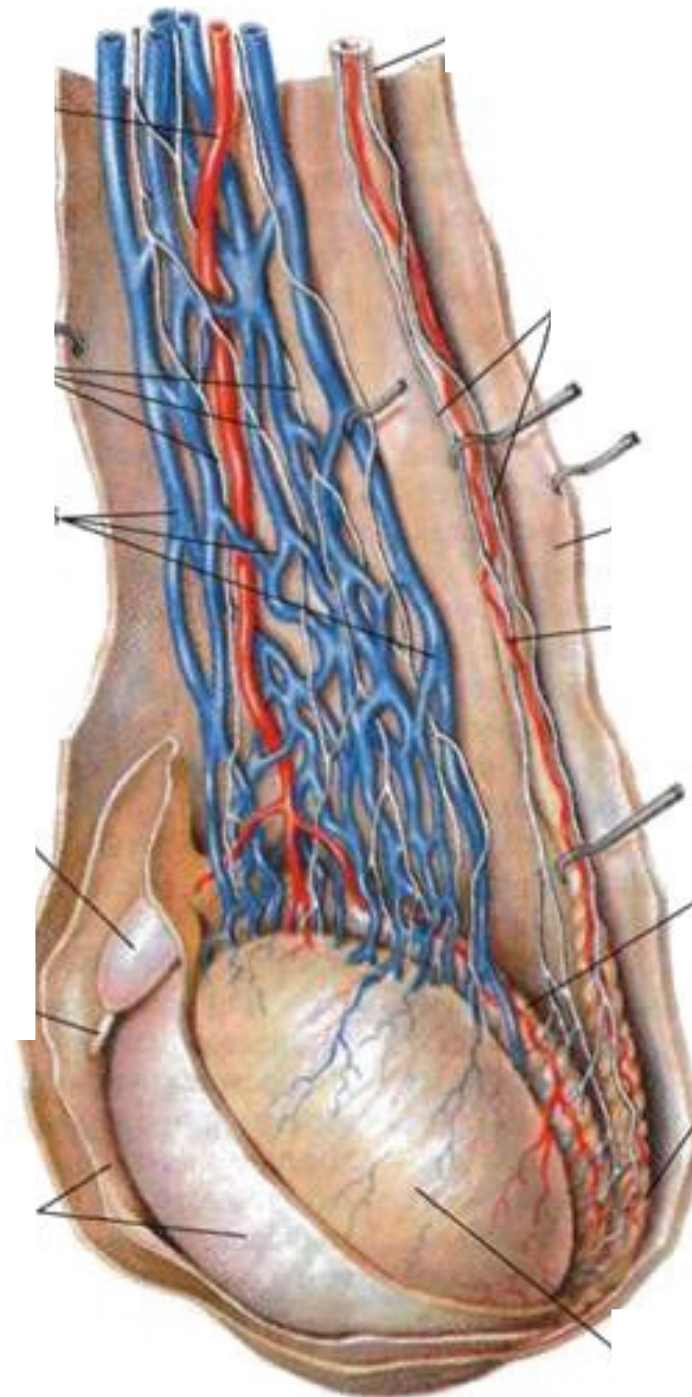
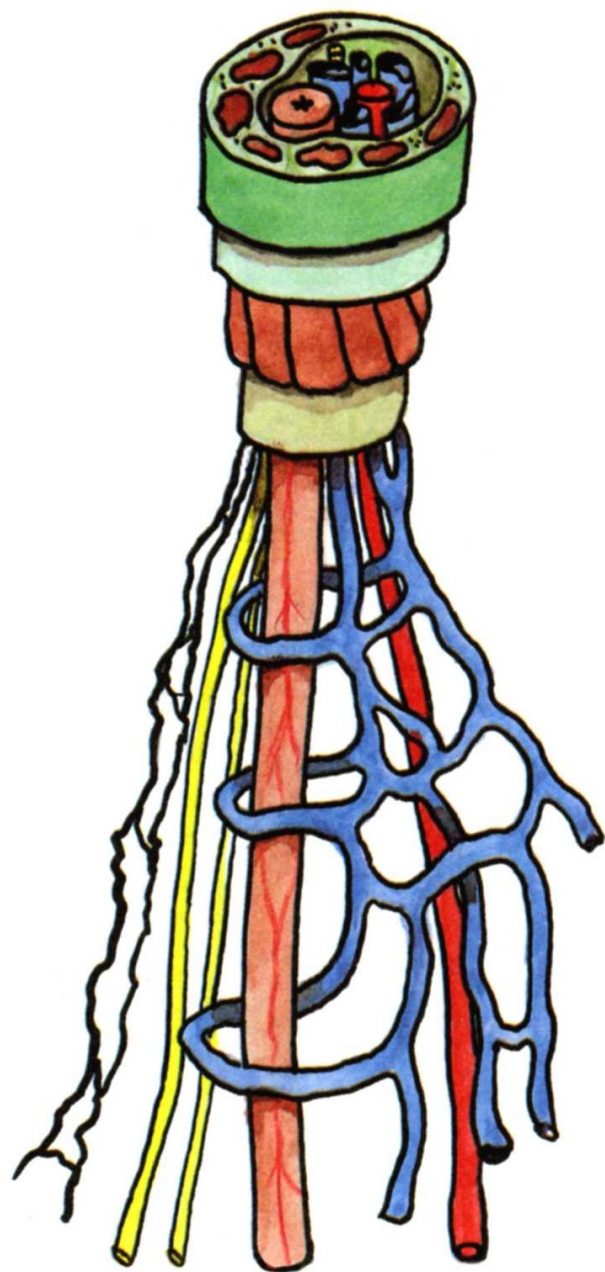
93. Nadvarle, stavba, uložení





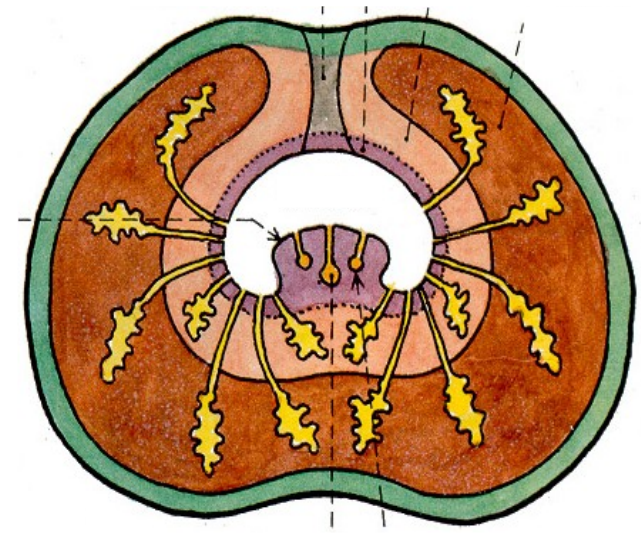
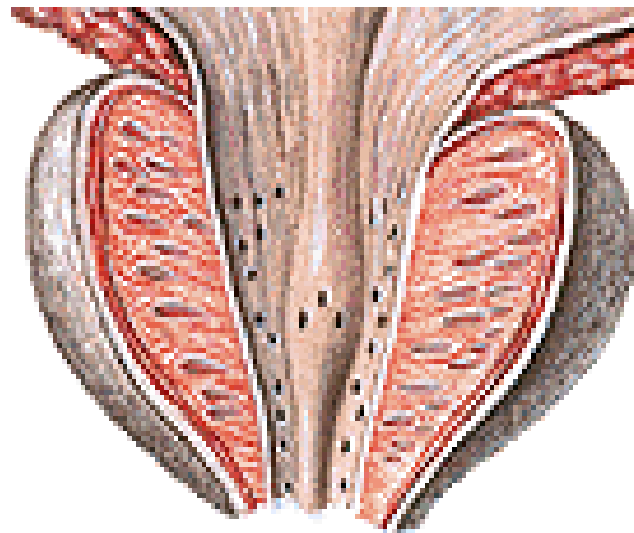
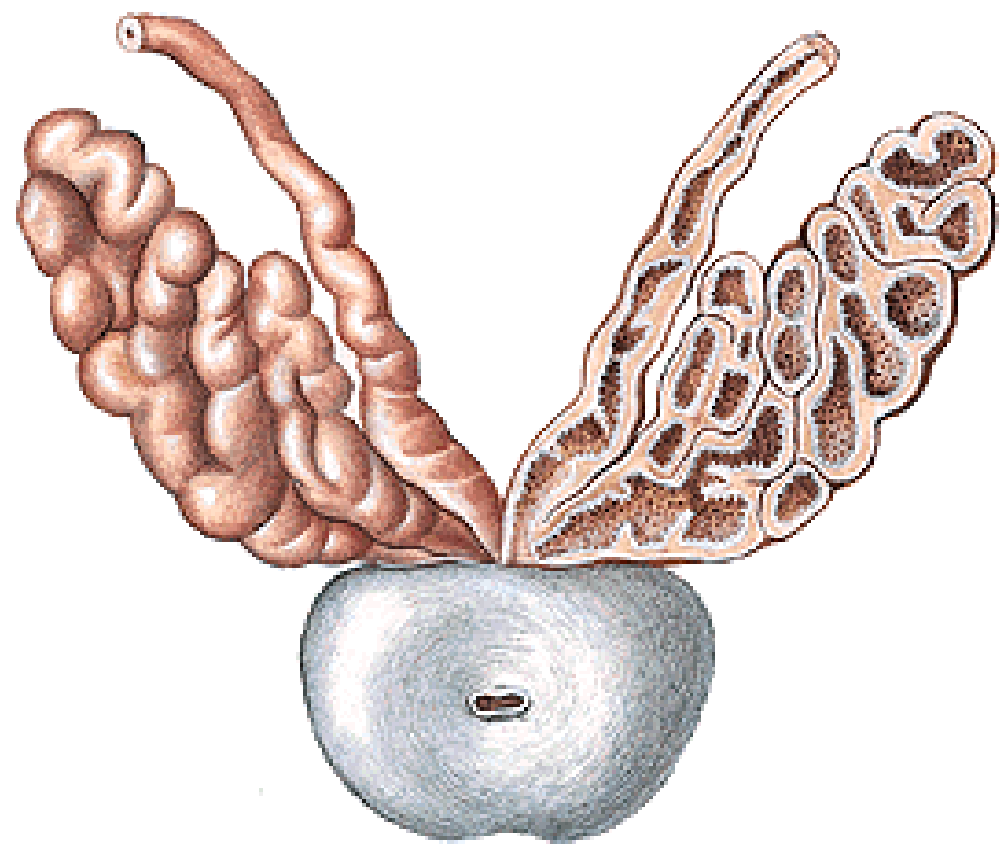
96. Ductus deferens, stavba, uložení

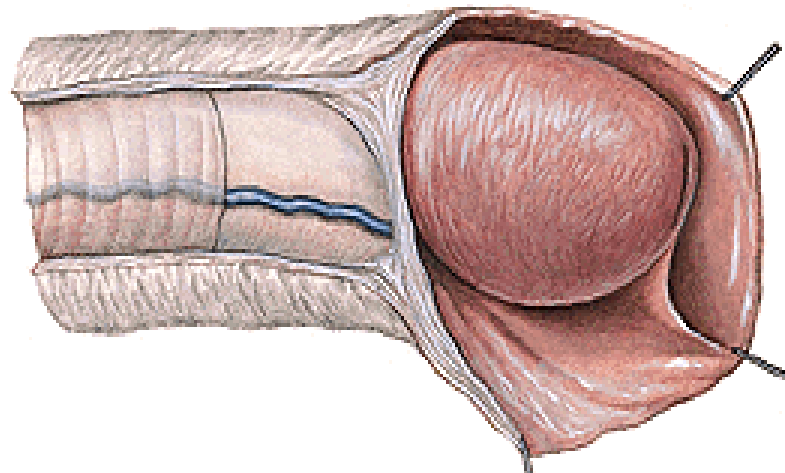
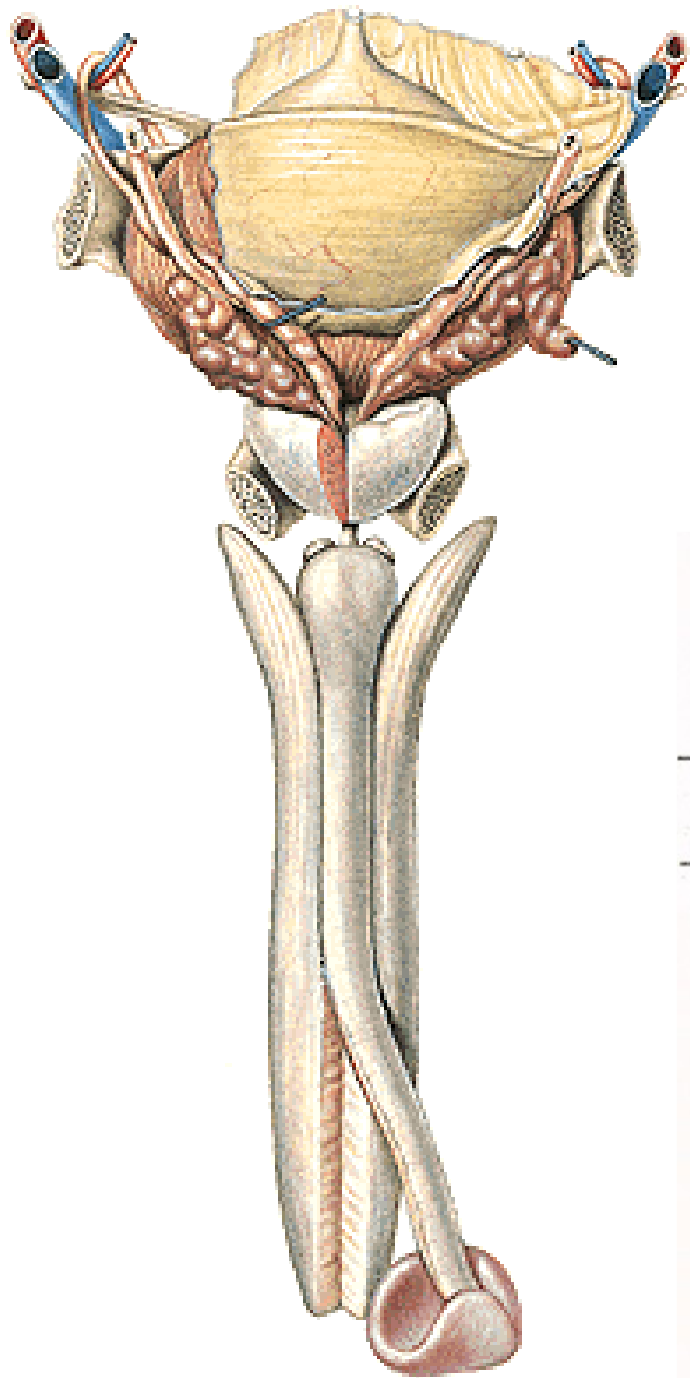
94. Provazec semenný



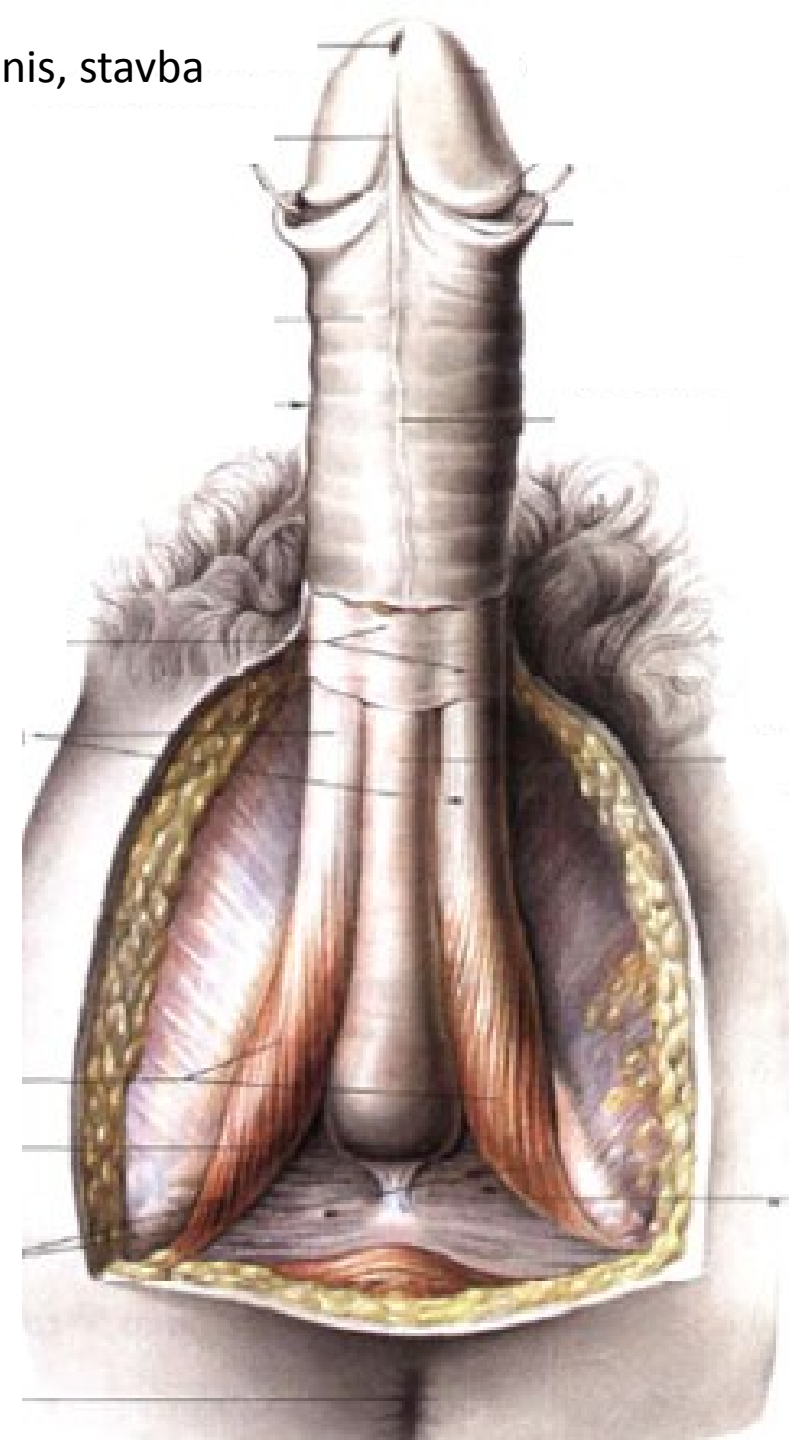
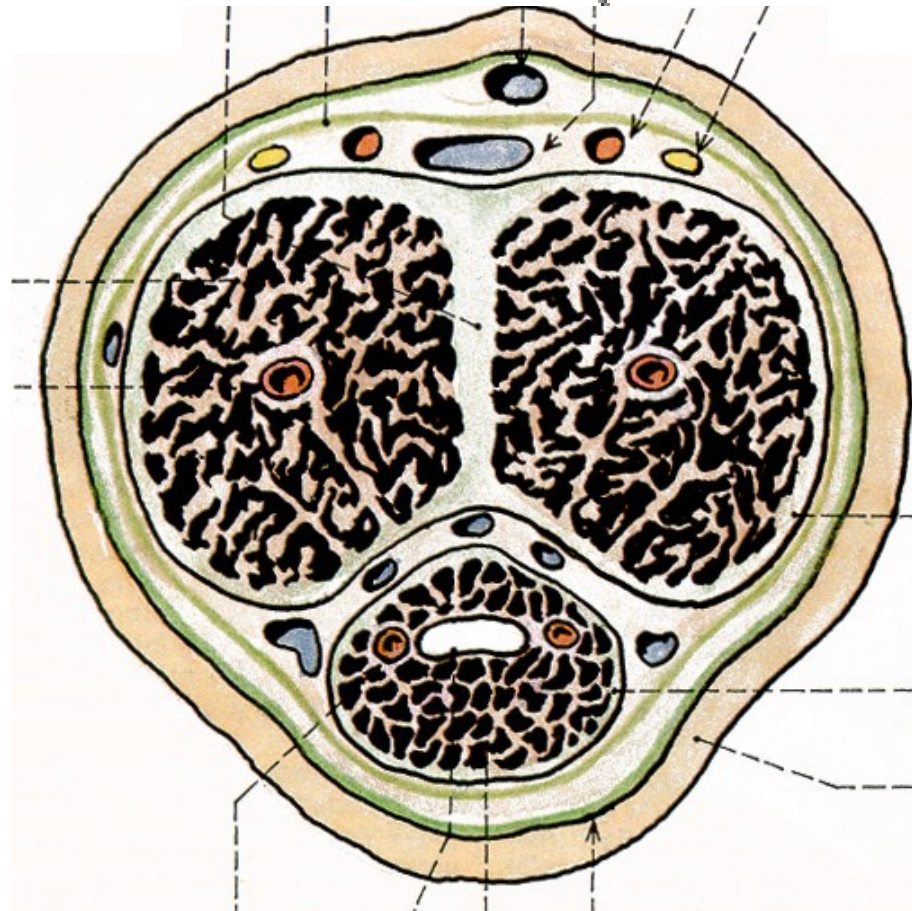
97. Vesiculae seminales

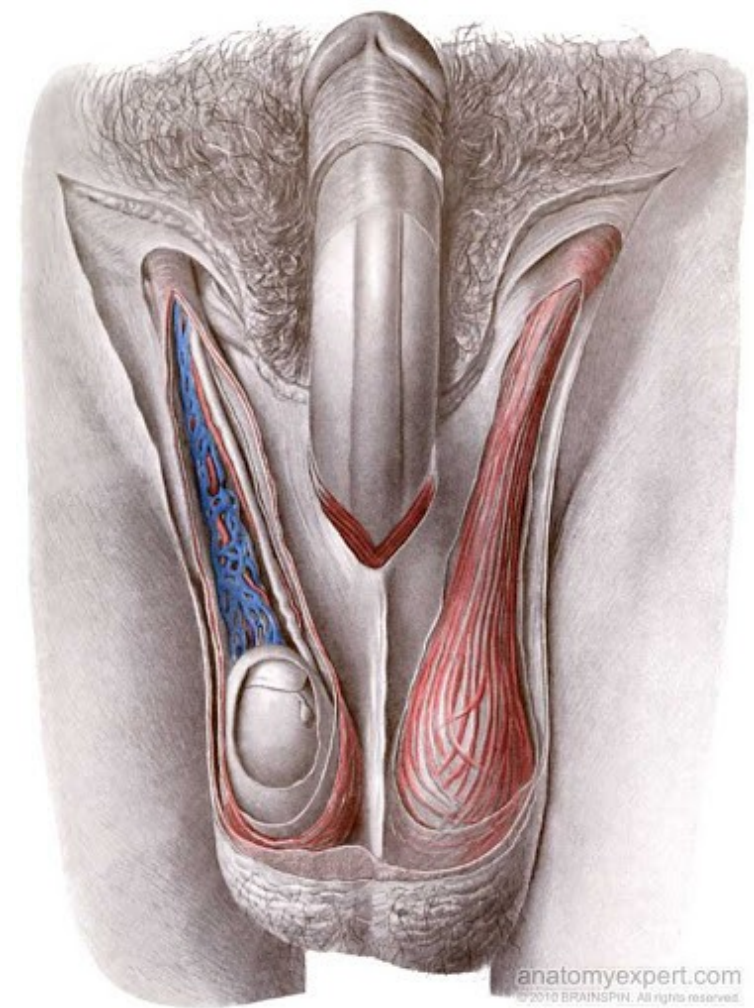
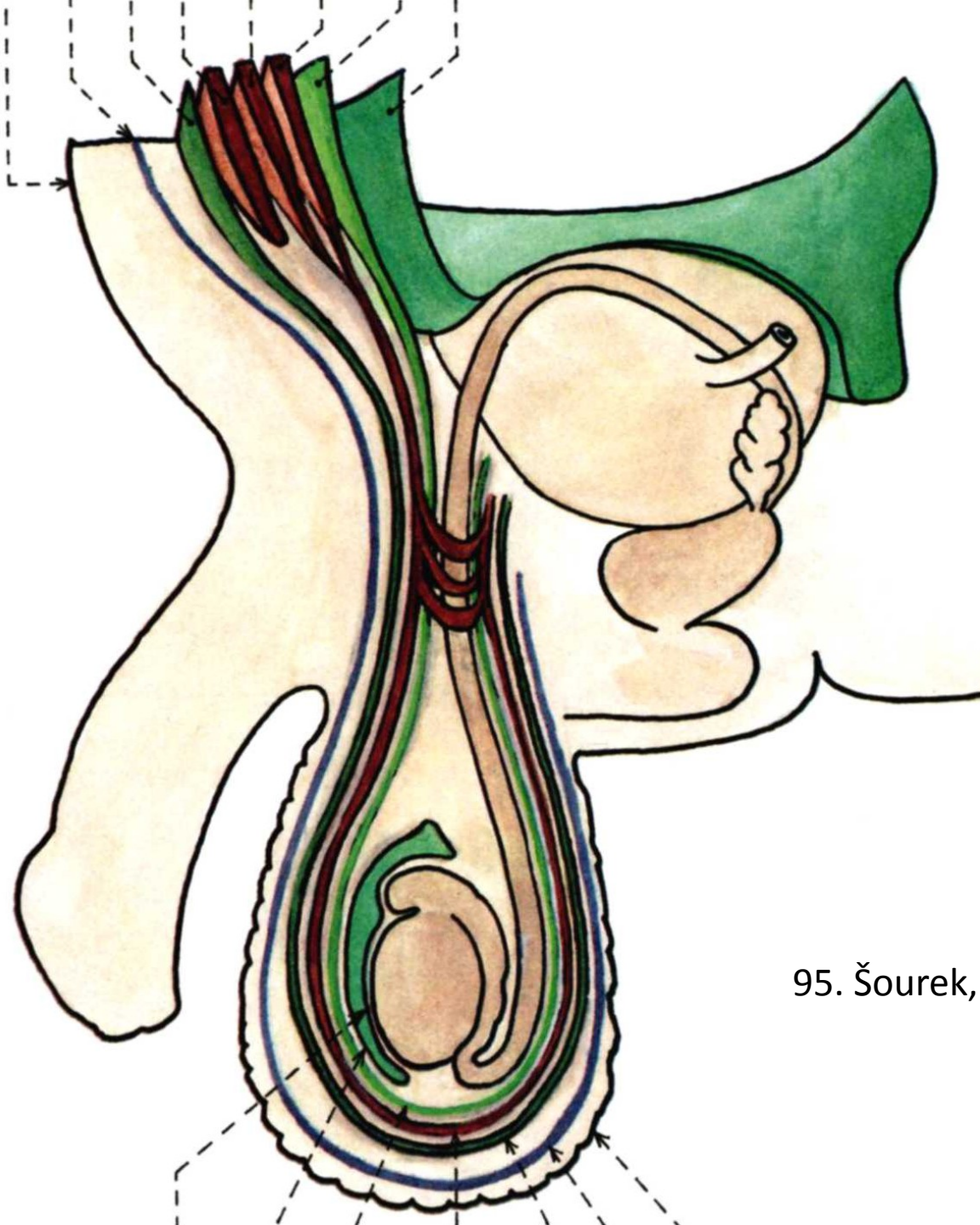
98. Prostata, popis, laloky, syntopie





100. Penis, stavba





95. Šourek, vrstvy skrota

108. Diaphragma urogenitale masculinum, svaly zevních pohlavních orgánů muže

110. Diaphragma pelvis

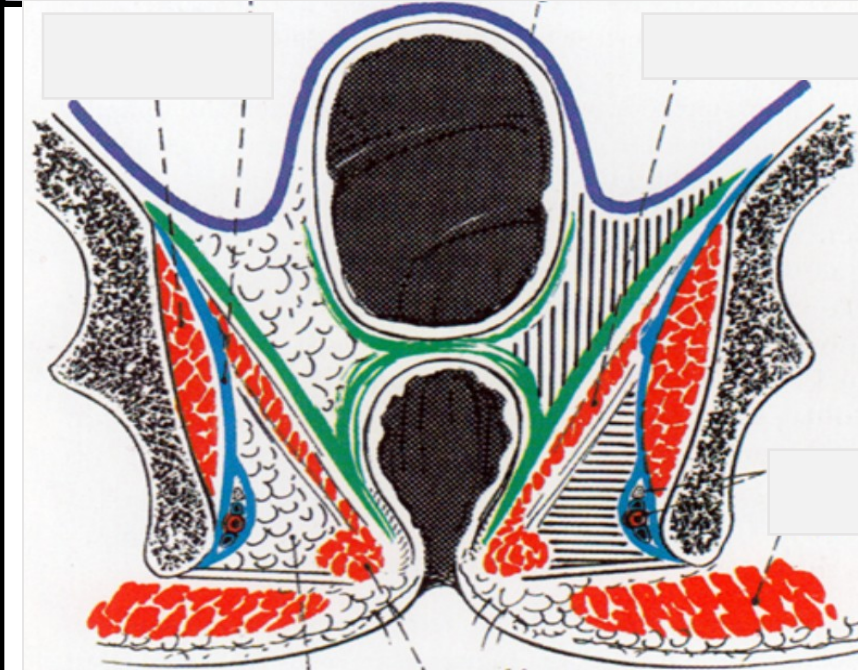
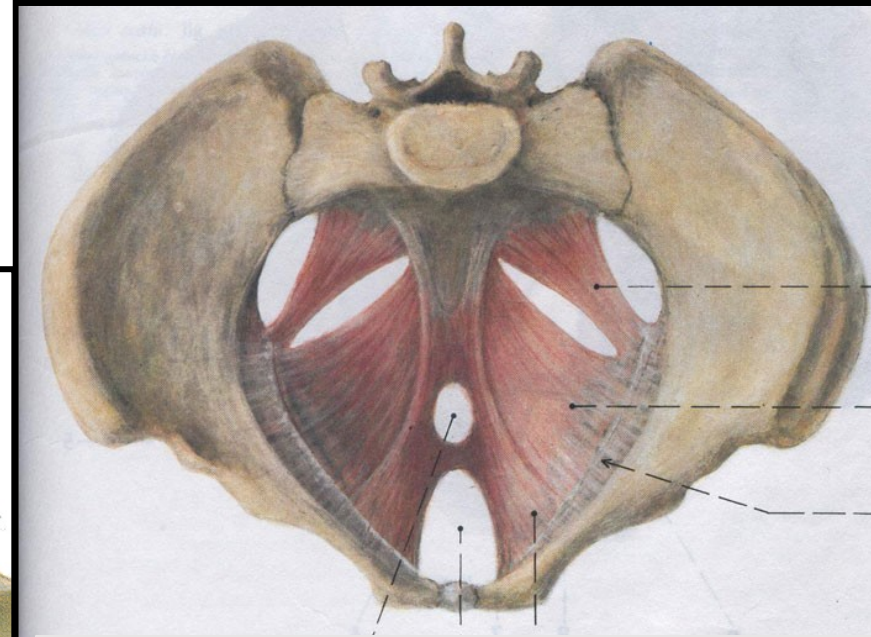
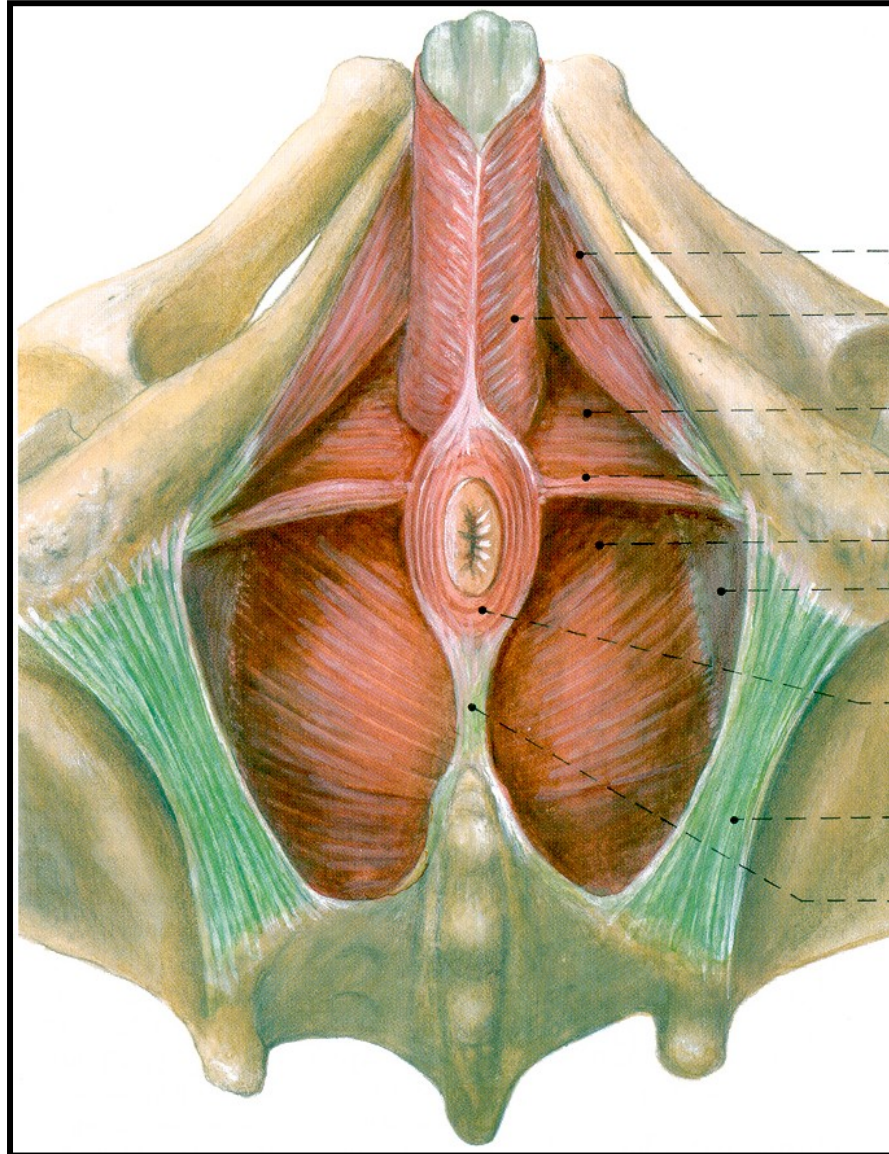
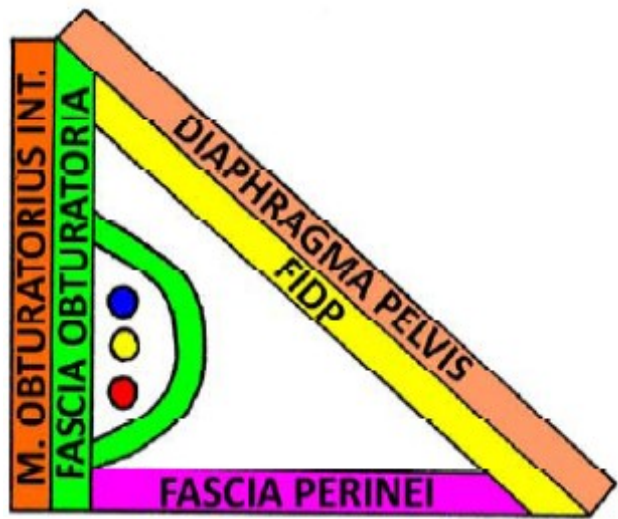
42. Povrchová a vnitřní hranice malé a velké pánve

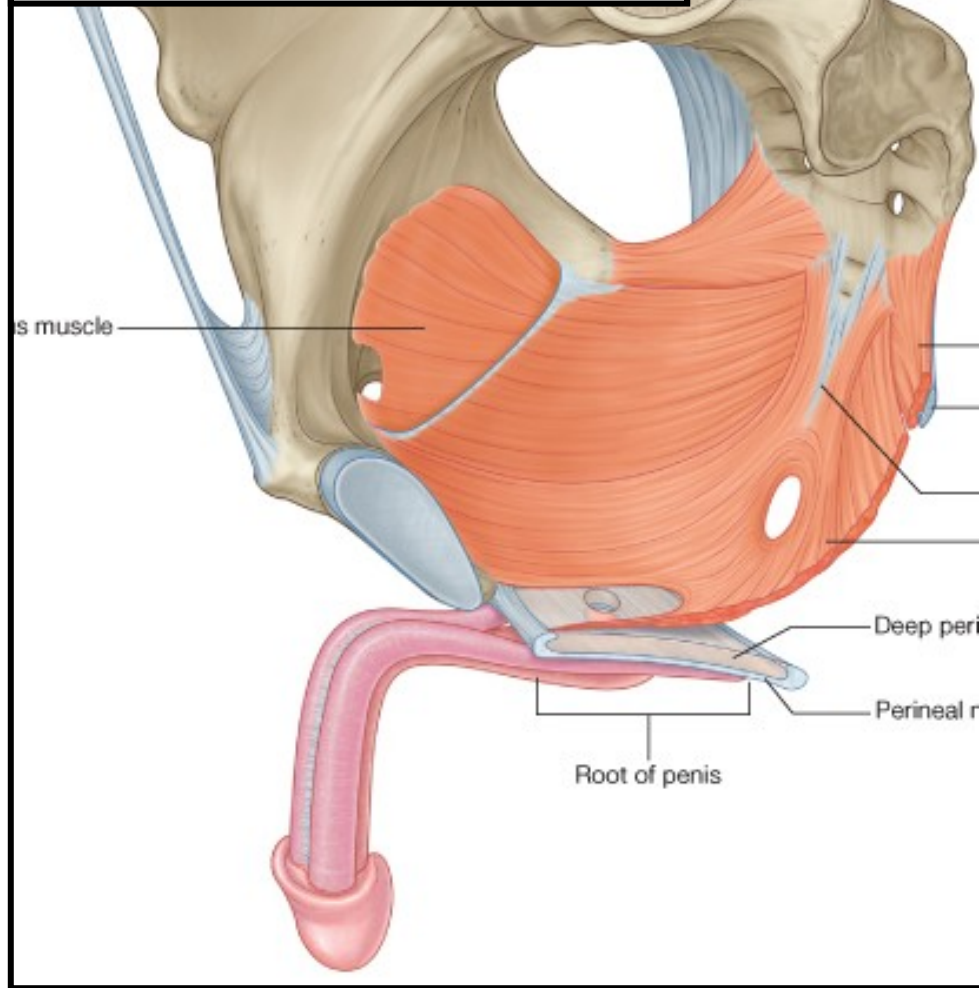
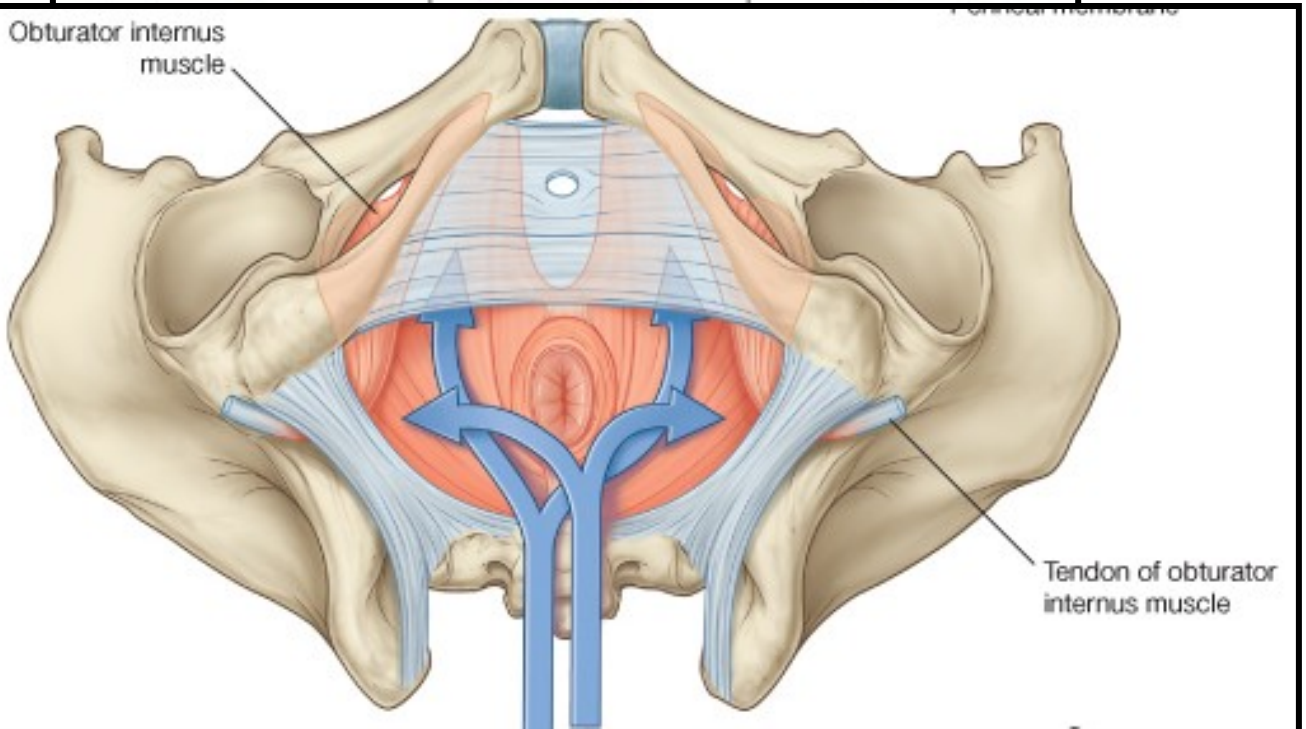
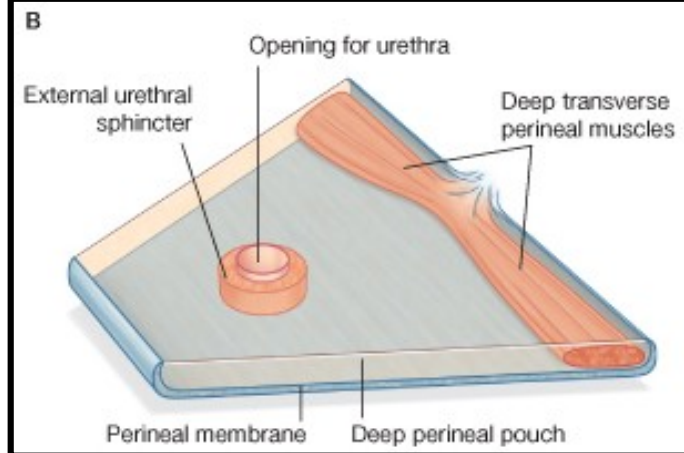
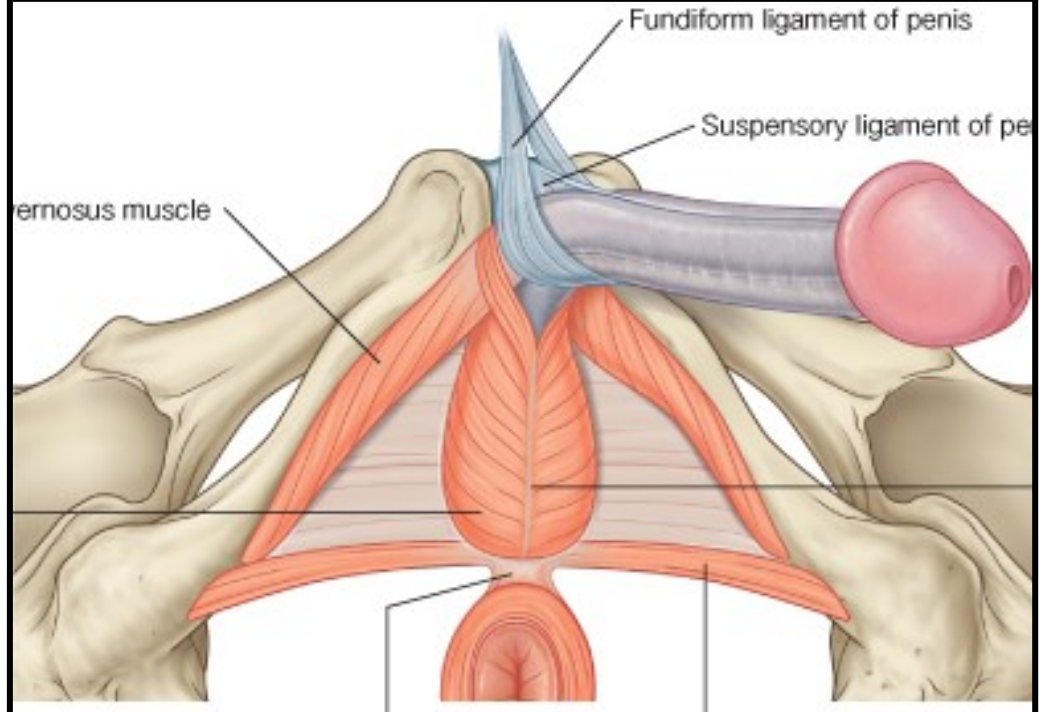
43. Fossa ischiorectalis

44. Reg. urogenitalis muže

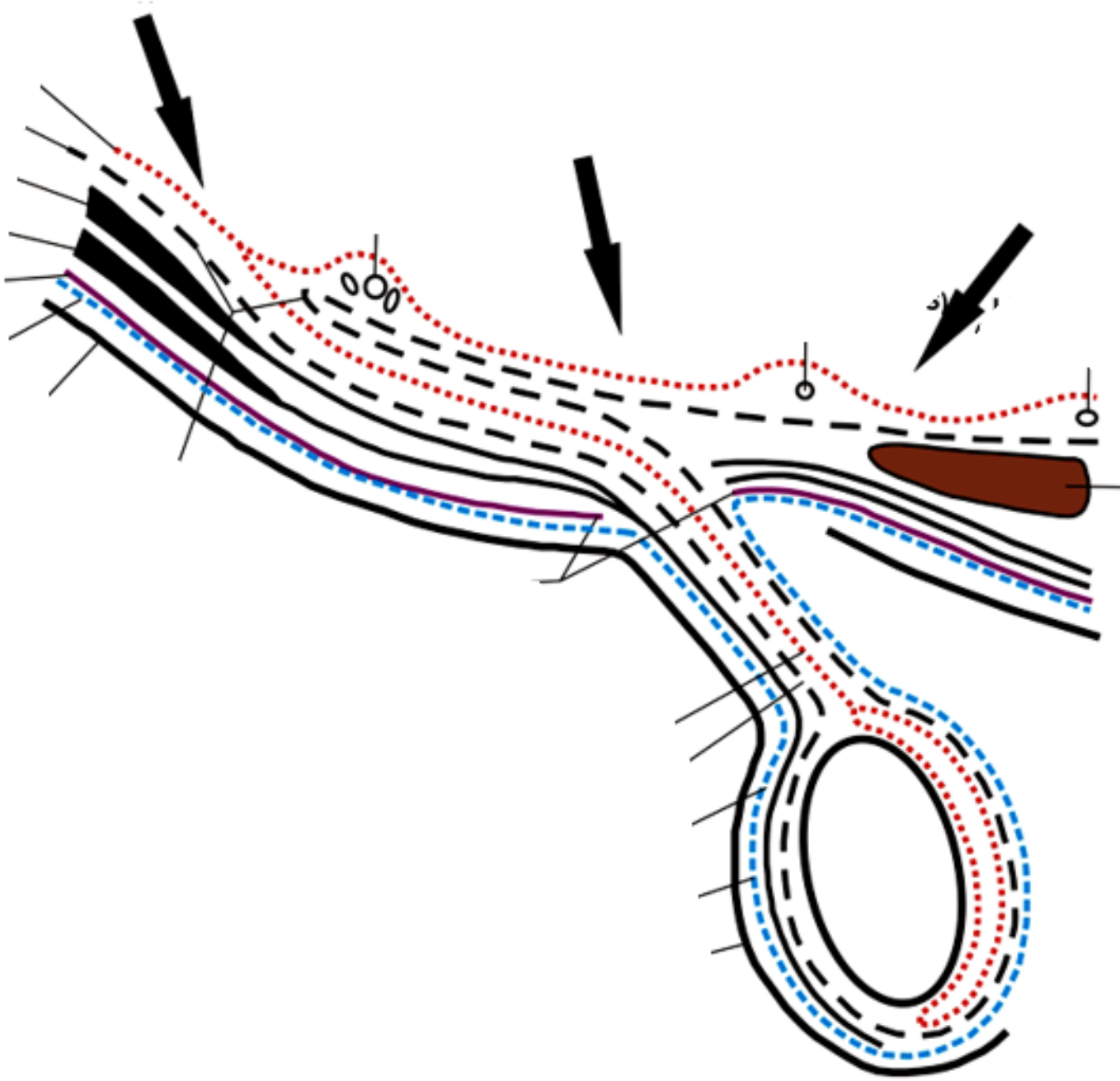
46. Reg. analis

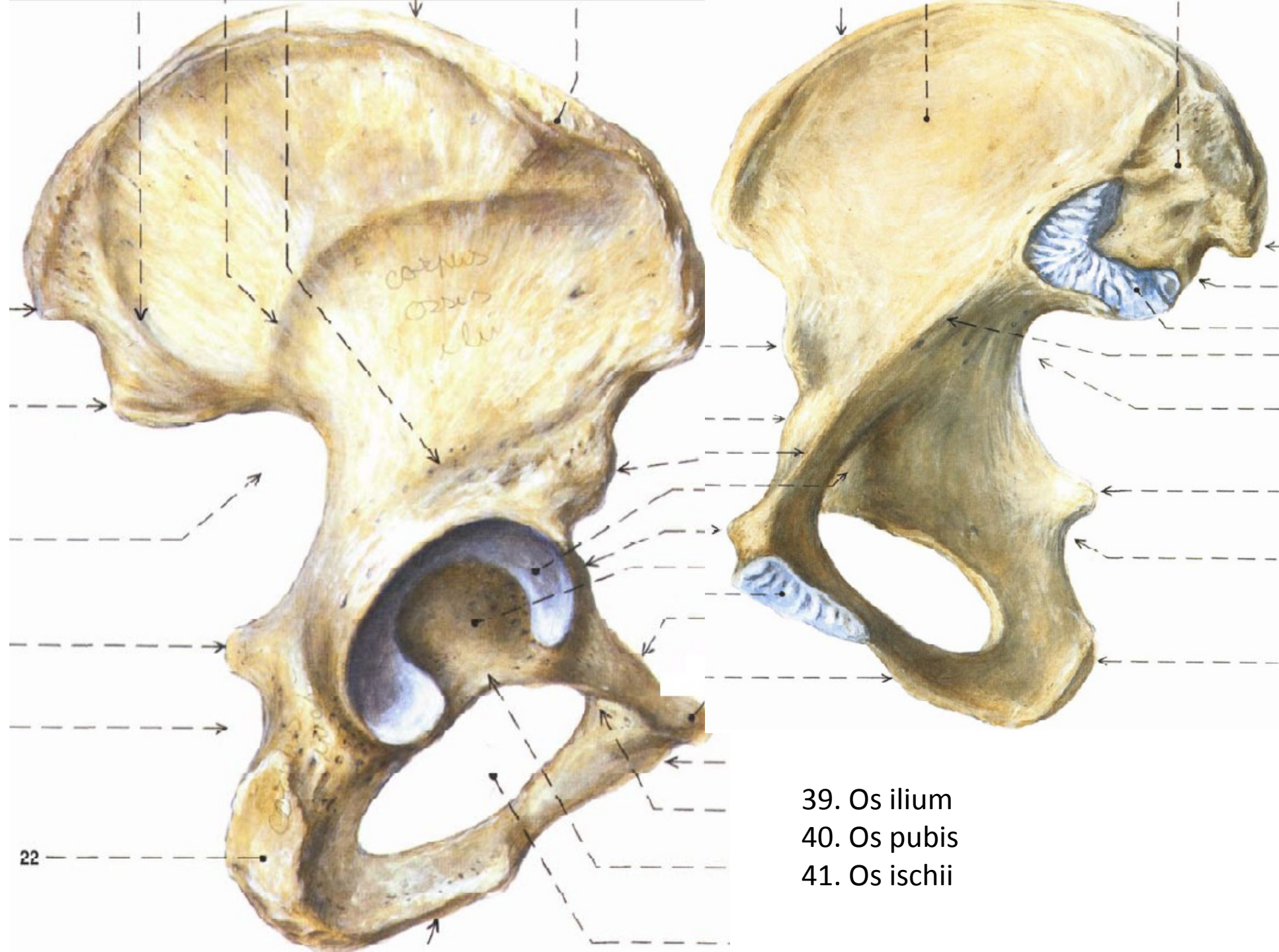
47. Cavum pelvis infraperitoneale muže





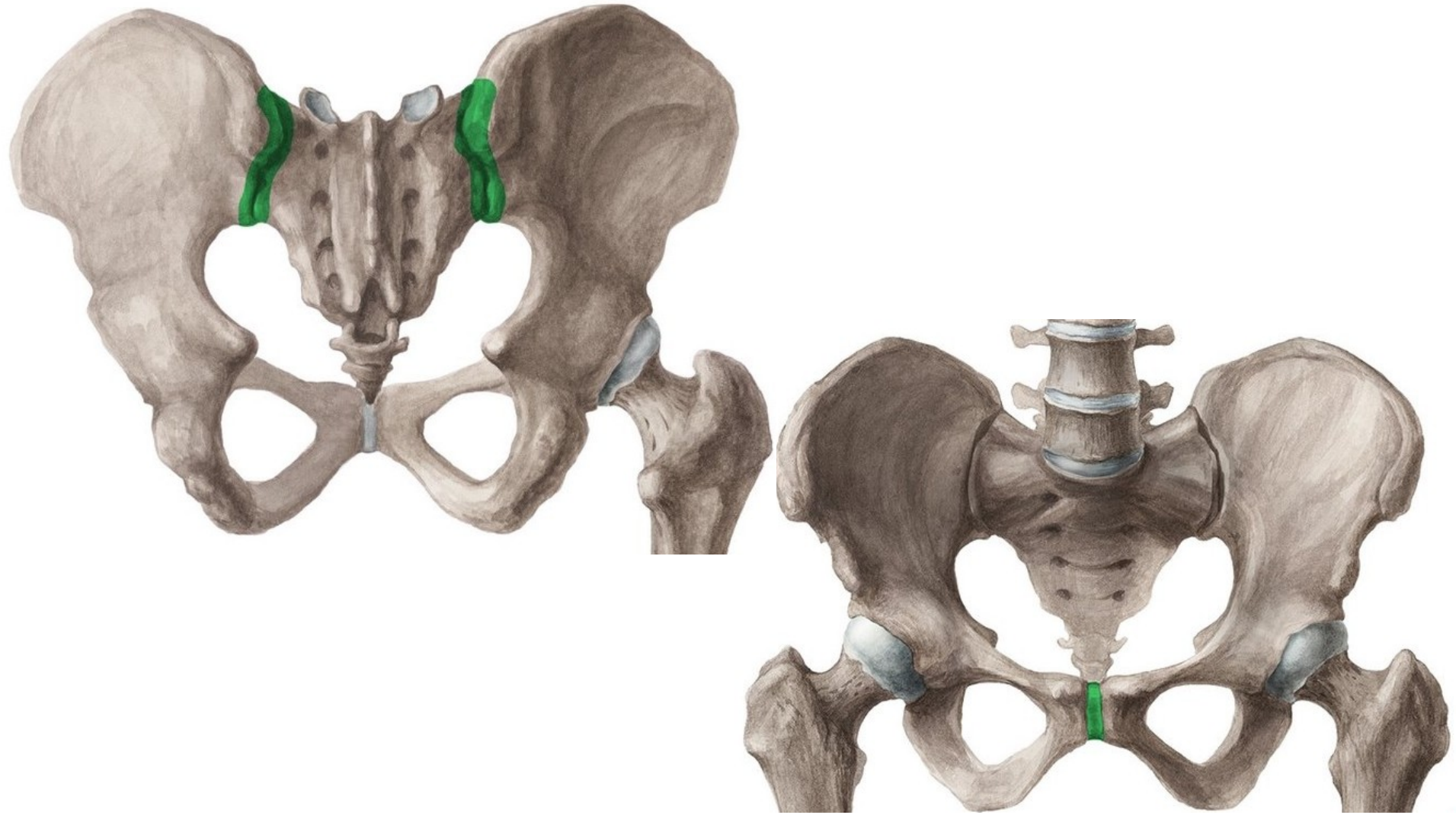
Popište obrázek 😊

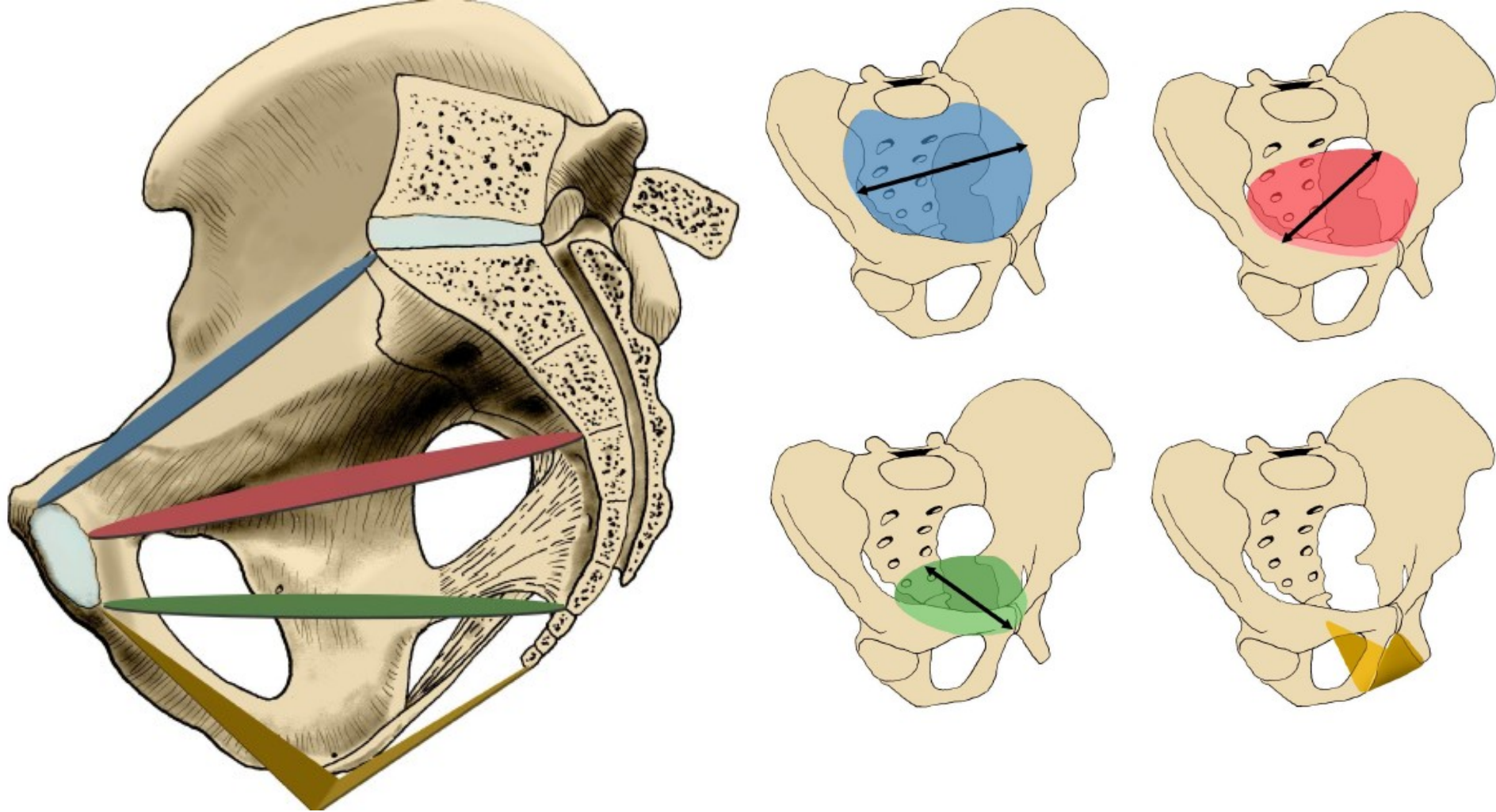




120. Art. sacroiliaca a syndesmózy na pánvi

121. Art. coxae





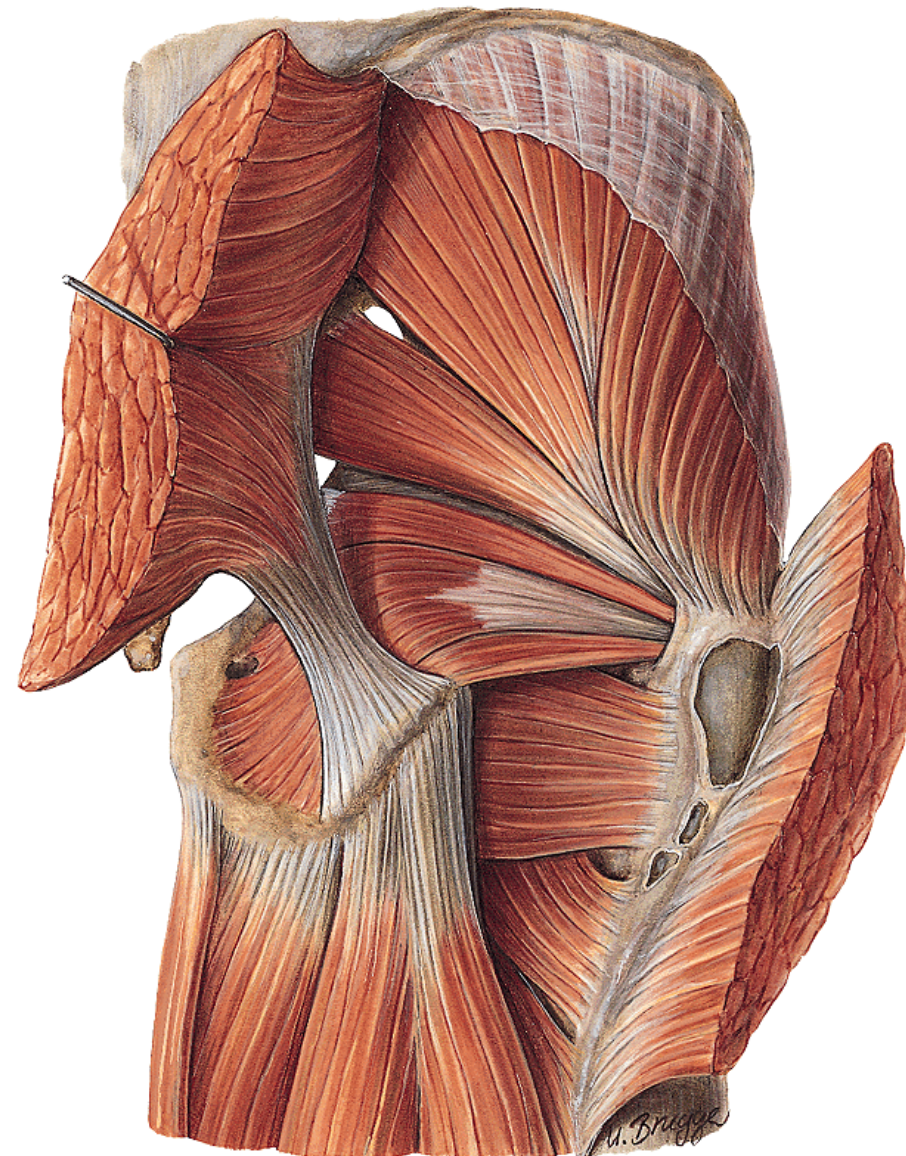
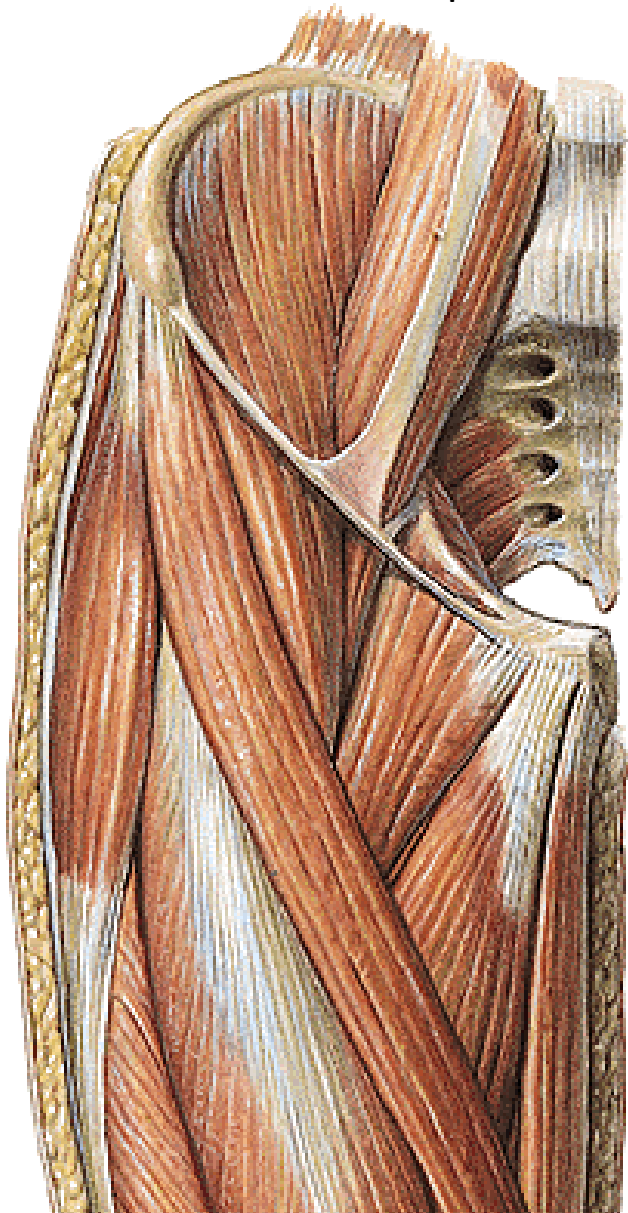
122. Roviny pánevní 1 – aditus et amplitudo pelvis

123. Roviny pánevní 2 – angustia et exitus pelvis

82. Mm. coxae – přední skupina

83. Mm. coxae – zadní skupina, povrchová vrstva (mm. glutei)

84. Mm. coxae – zadní skupina, hluboká vrstva (pelvitrochanterické svaly)



69. Canalis inguinalis

18. Arteria iliaca communis, Arteria iliaca interna, průběh, základní větve a oblast zásobení

19. Arteria iliaca externa

