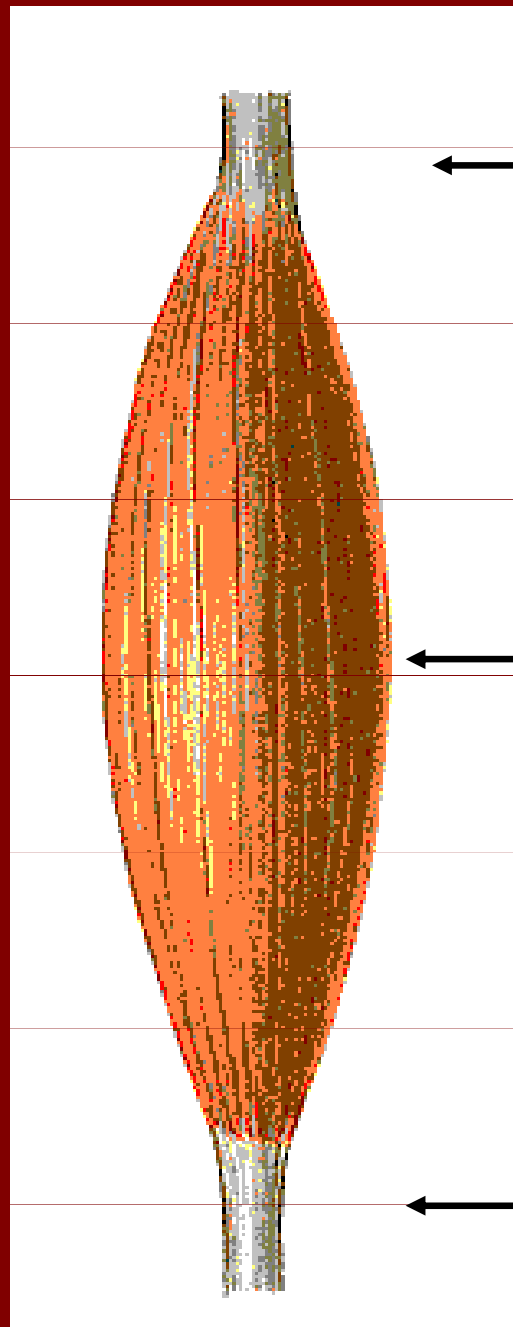


Obecná myologie

Obecná stavba svalu

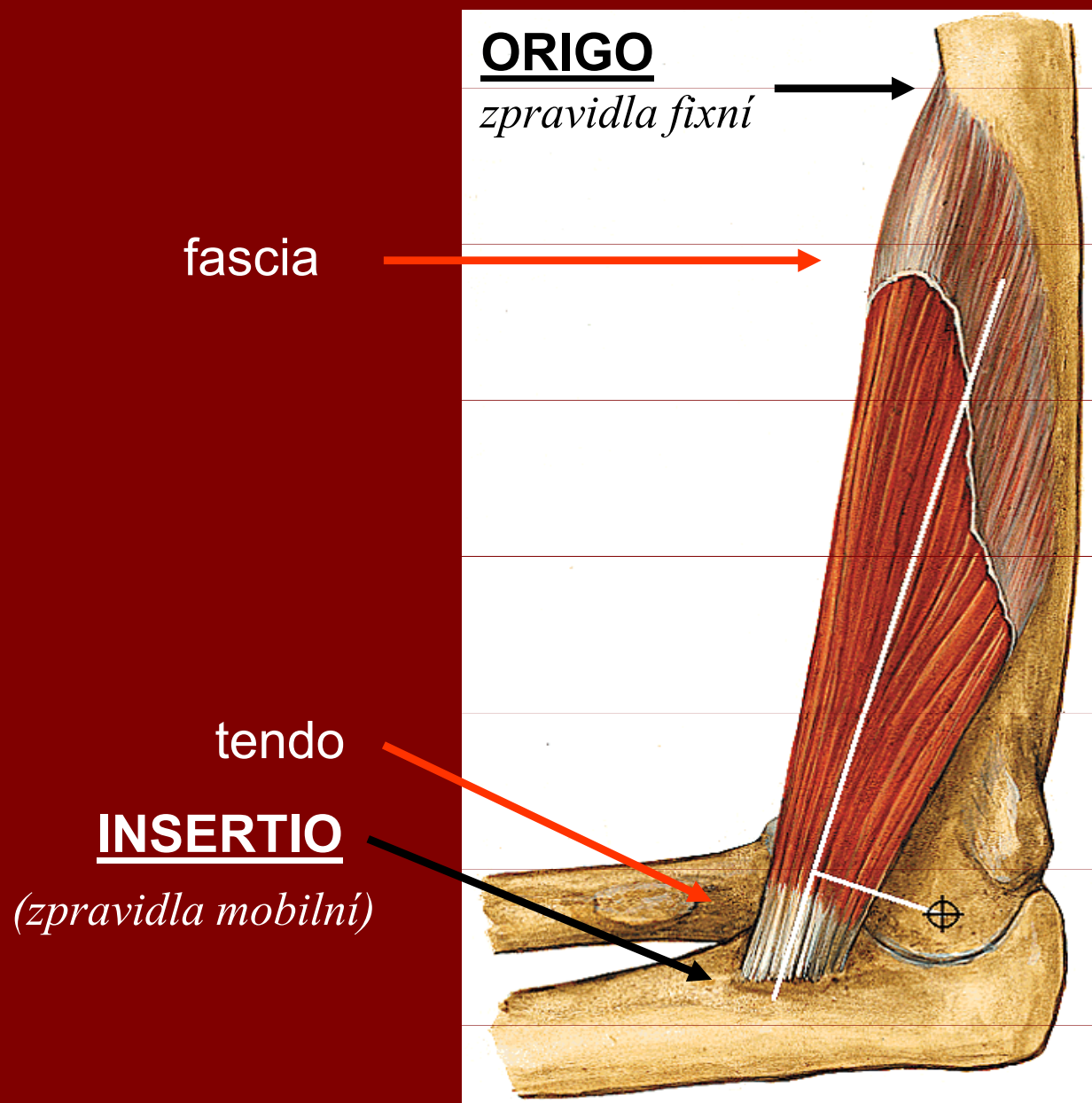


caput

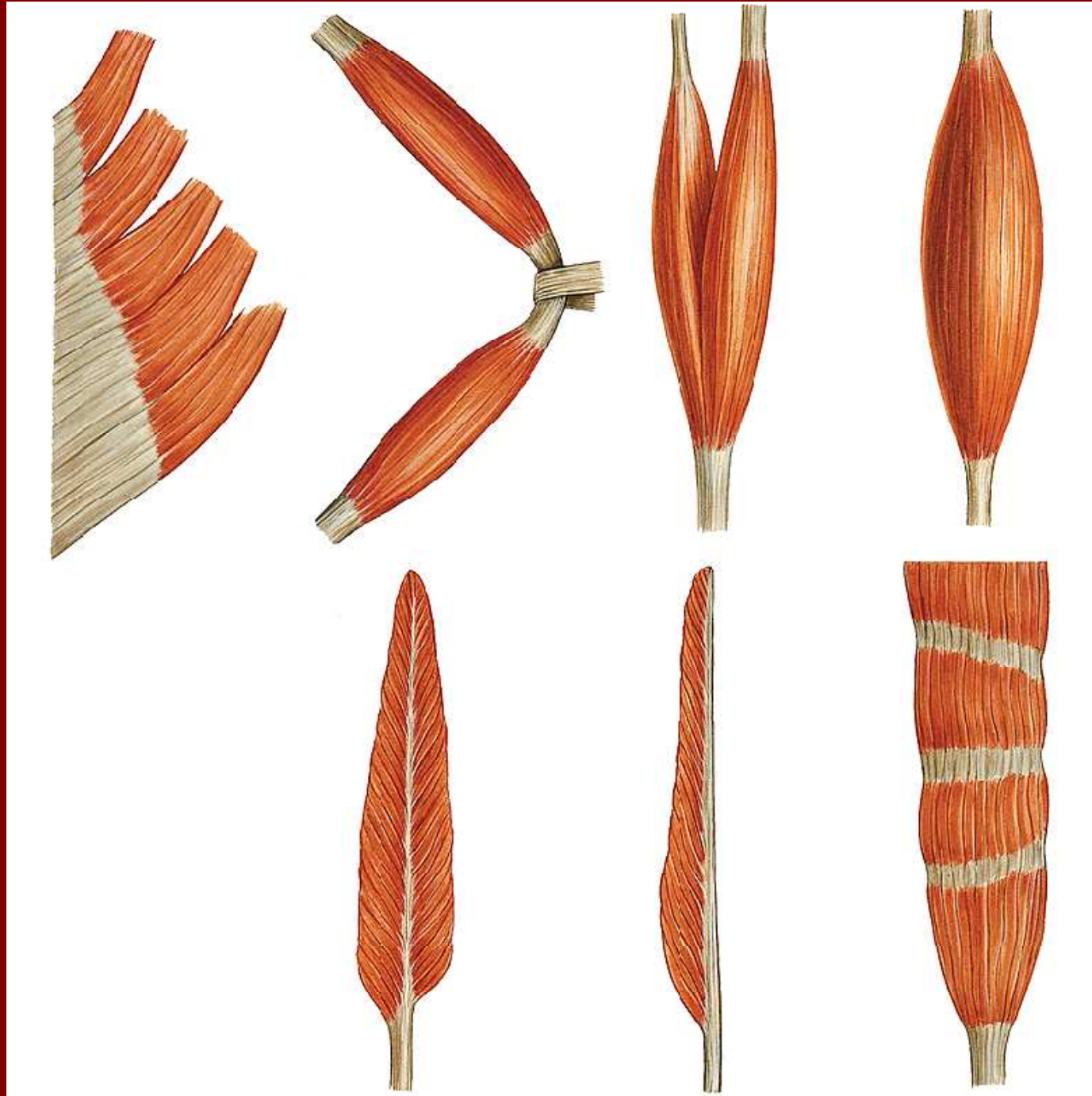
venter

cauda

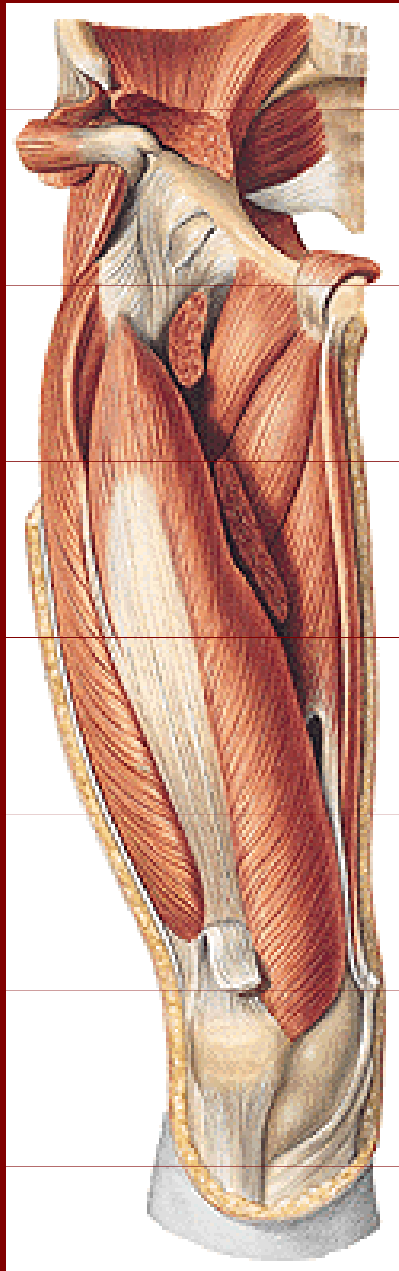
Funkční uspořádání svalu



Rozdělení svalů podle tvaru



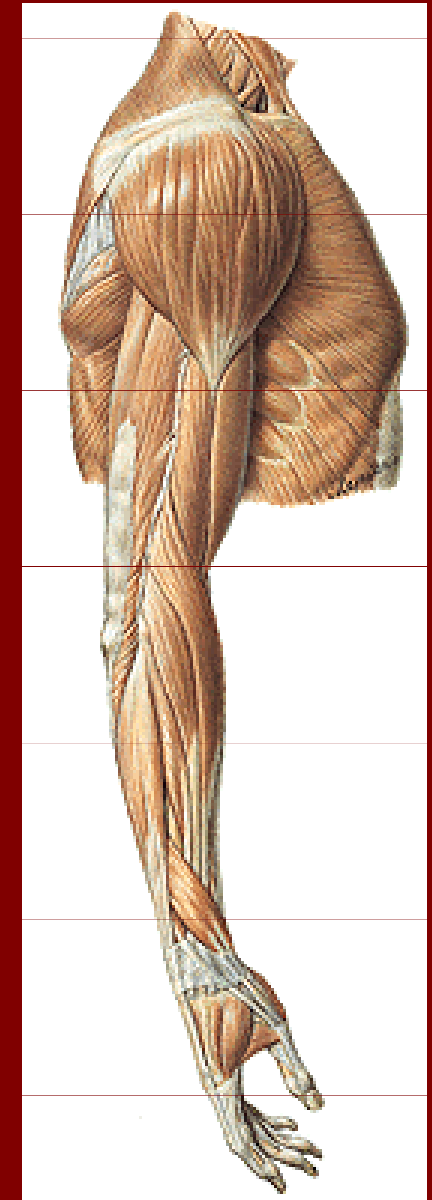
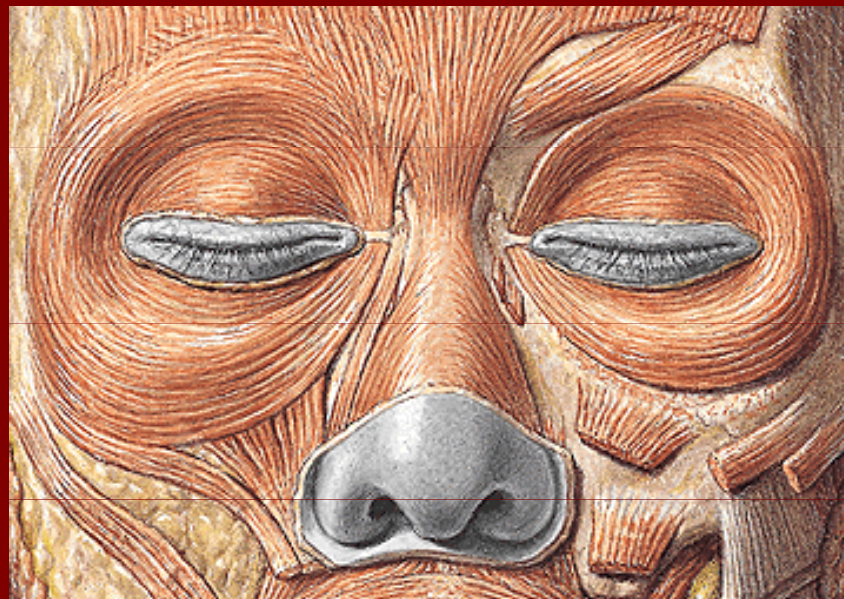
Rozdělení svalů podle funkce



flexory x extenzory

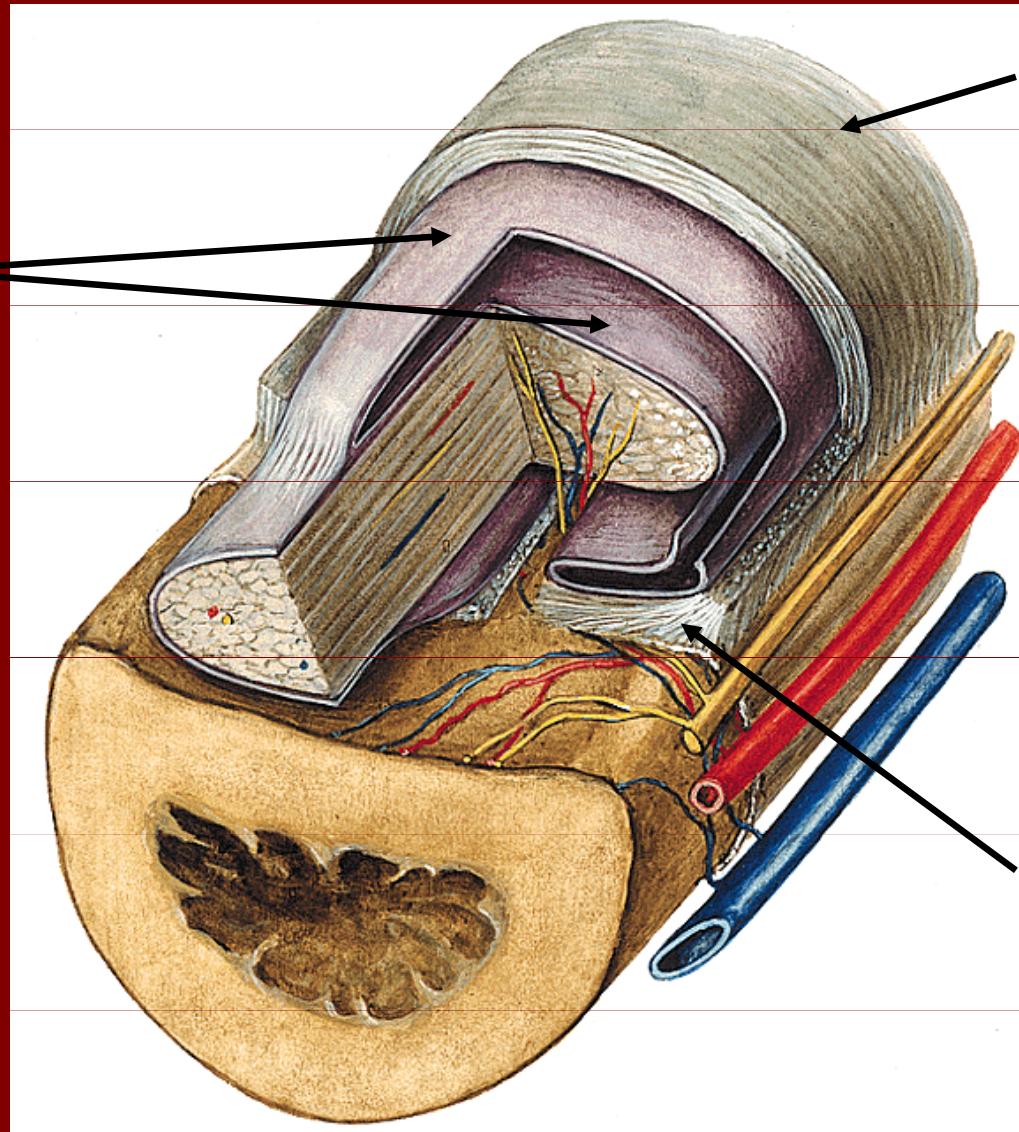
abduktory x adduktory

dilatátory x sfinktery



Pomocné zařízení svalové – šlachová pochva

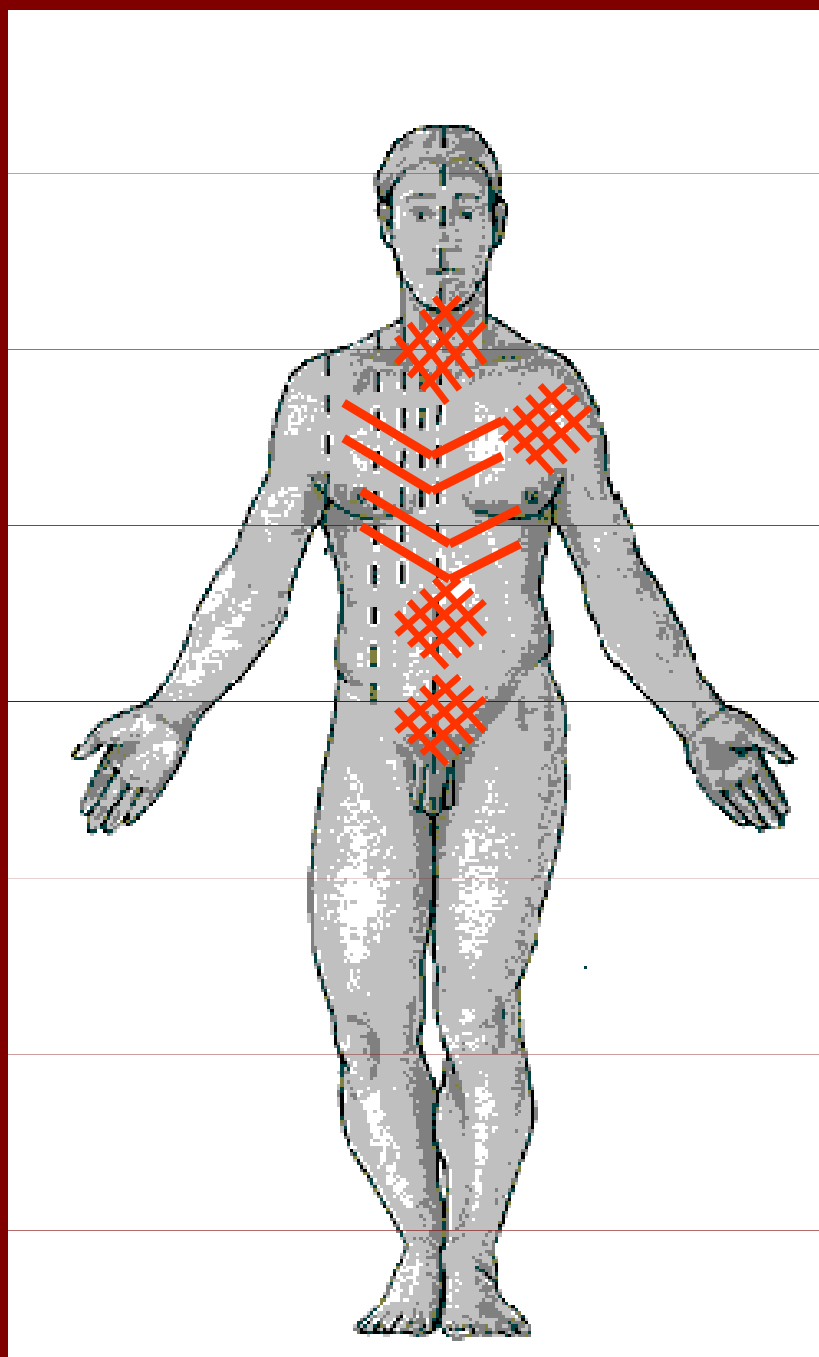
stratum
synoviale (2 listy)



stratum fibrosum

mesotendineum

Inervace svalů



Hlavové nervy (III. – XII.)

plx. cervicalis

plx. brachialis

nn. intercostales

plx. lumbalis

plx. sacralis

Míšní nervy (31)

zadní větve
(hřbet)

přední větve
> pleteně

Speciální myologie

Svaly hlavy

kosterní

kožní

orgánové

Svaly krku

povrchová vrstva

hluboká vrstva

Svaly hrudníku

povrchové

hluboké

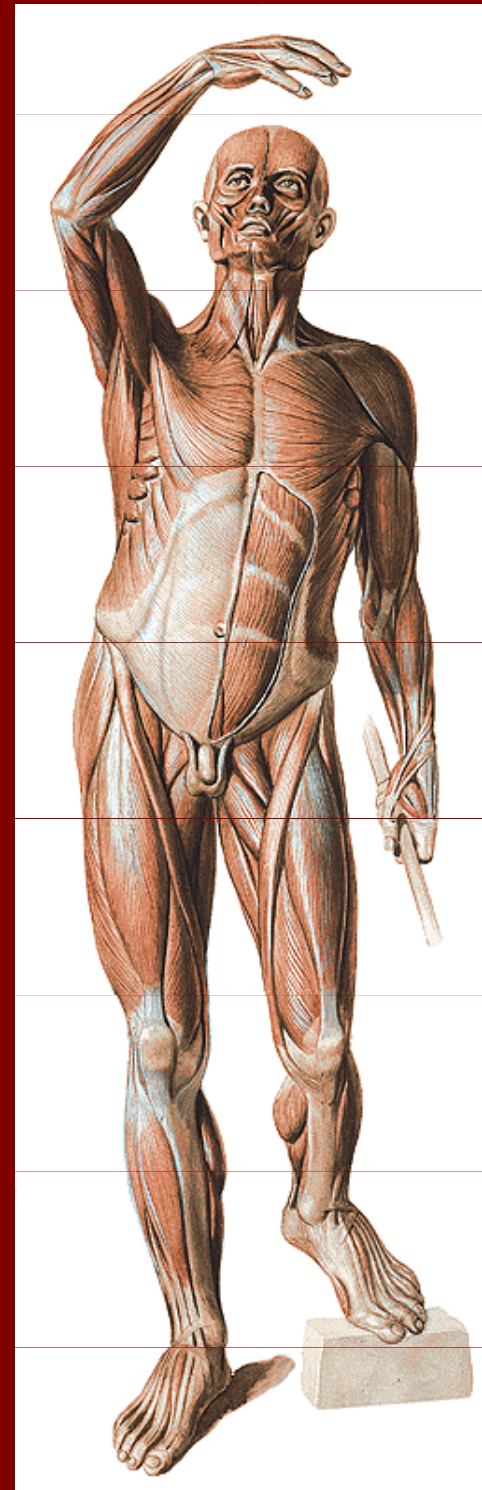
Svaly břicha

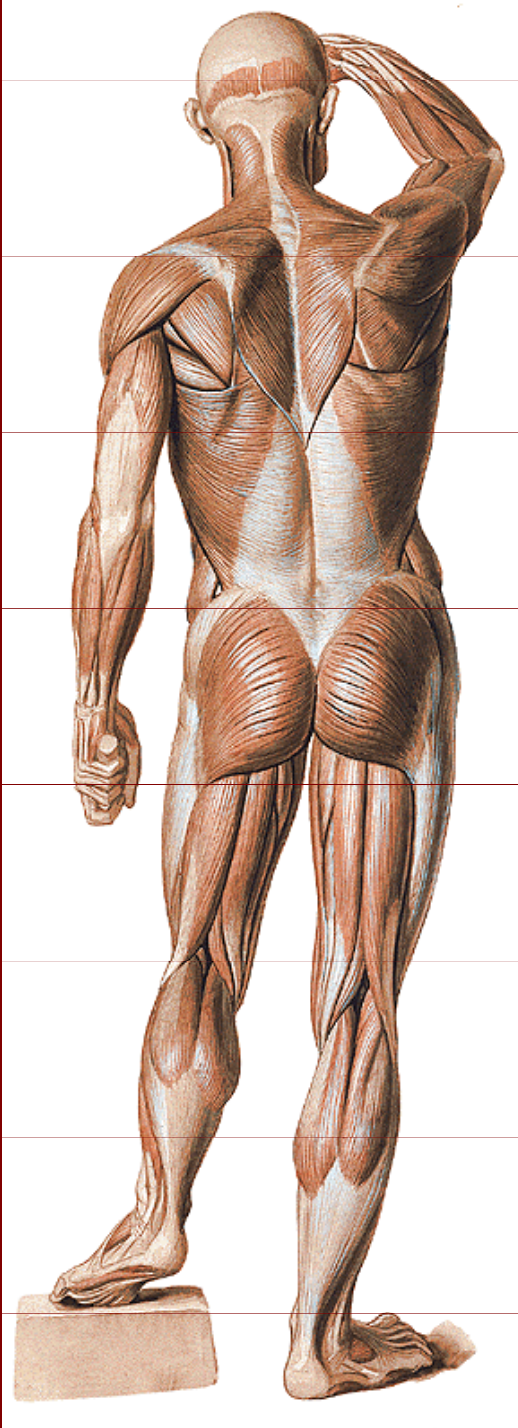
přední skupina

boční skupina

zadní skupina

Svaly hráze





Svaly hřbetní

povrchová vrstva

hluboká vrstva

Svaly horní končetiny

ramenní

pažní

předloktí

ruky

Svaly dolní končetiny

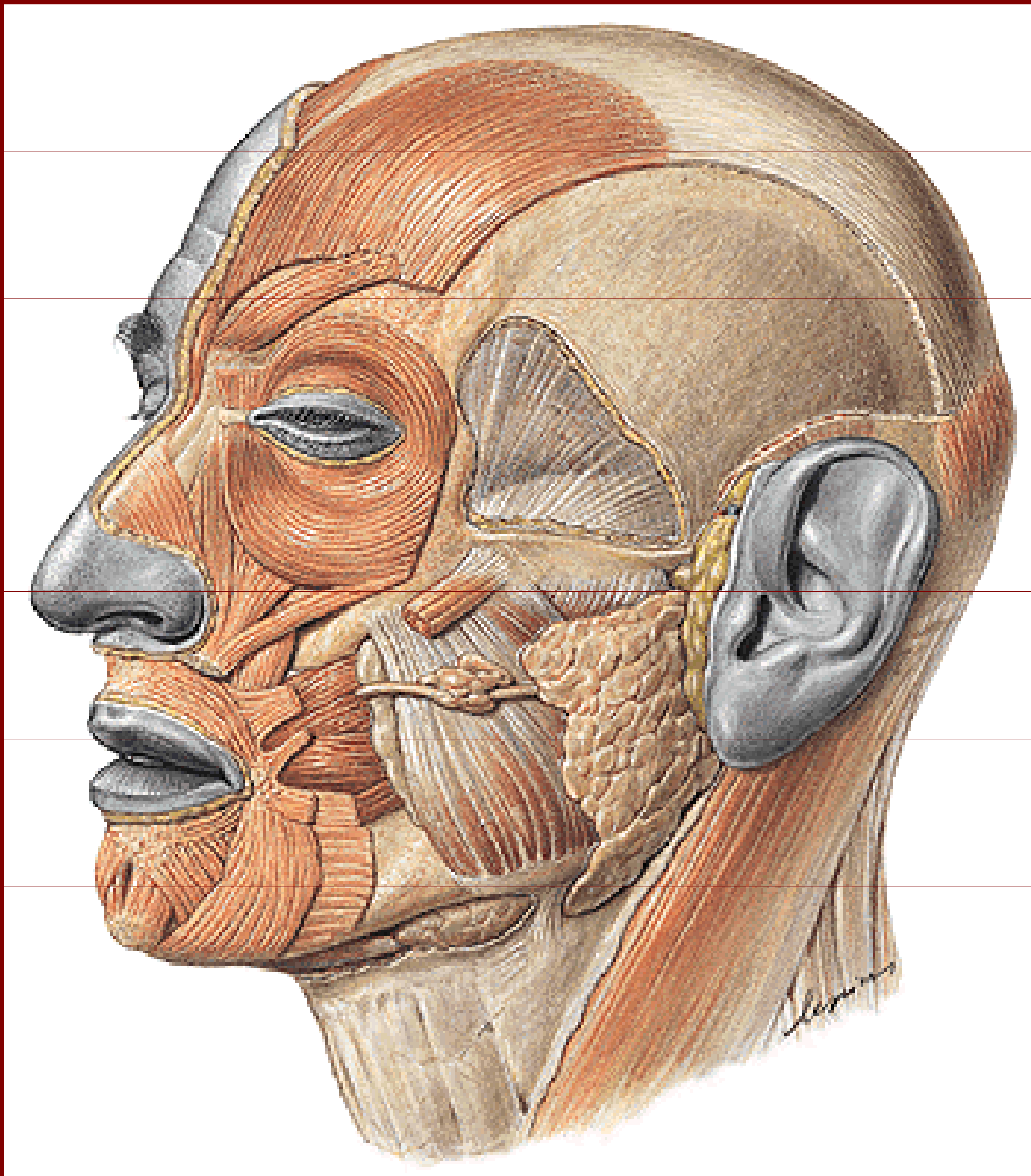
kyčelní

stehenní

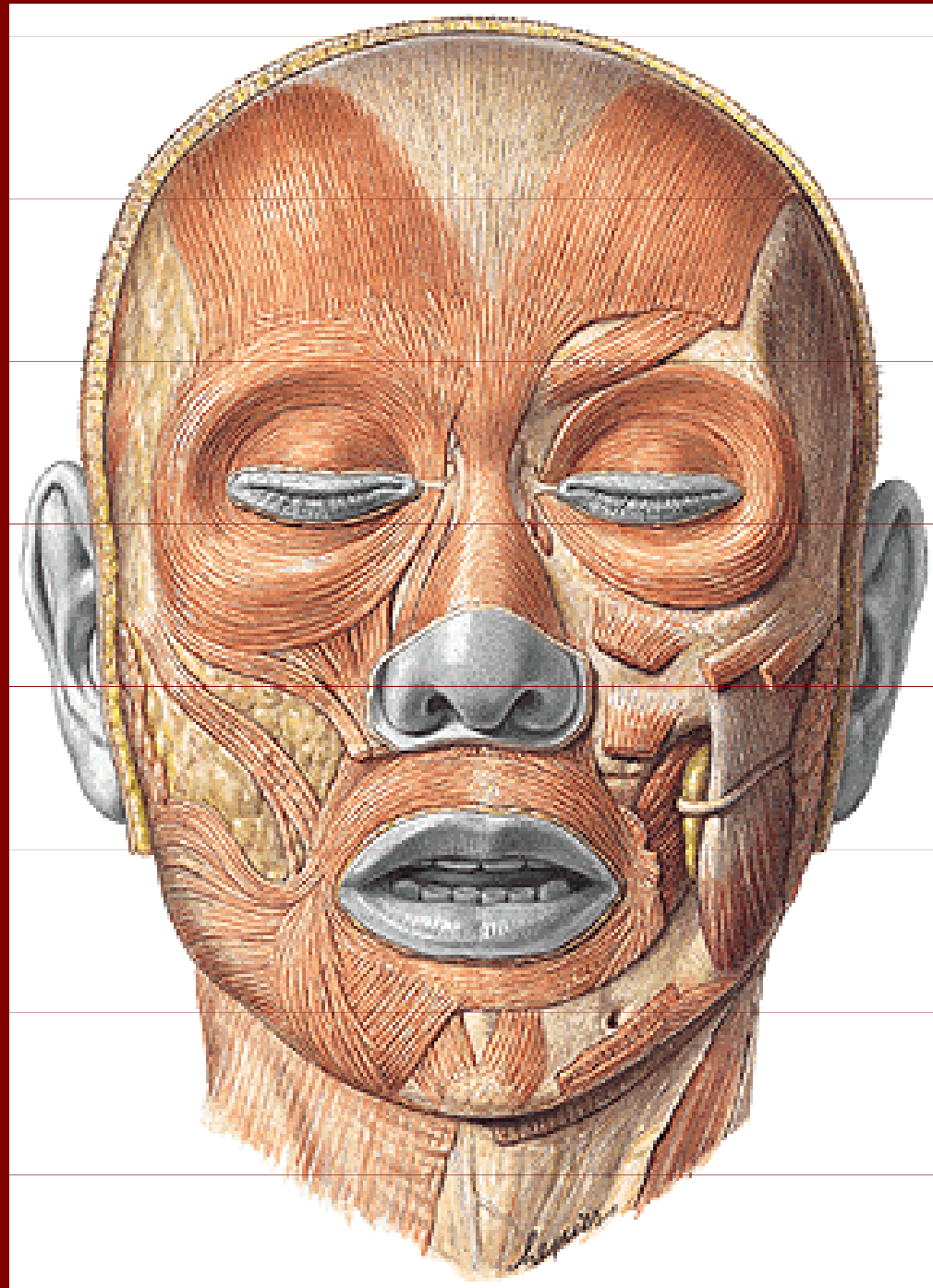
bércové

nohy

Přehled svalů hlavy

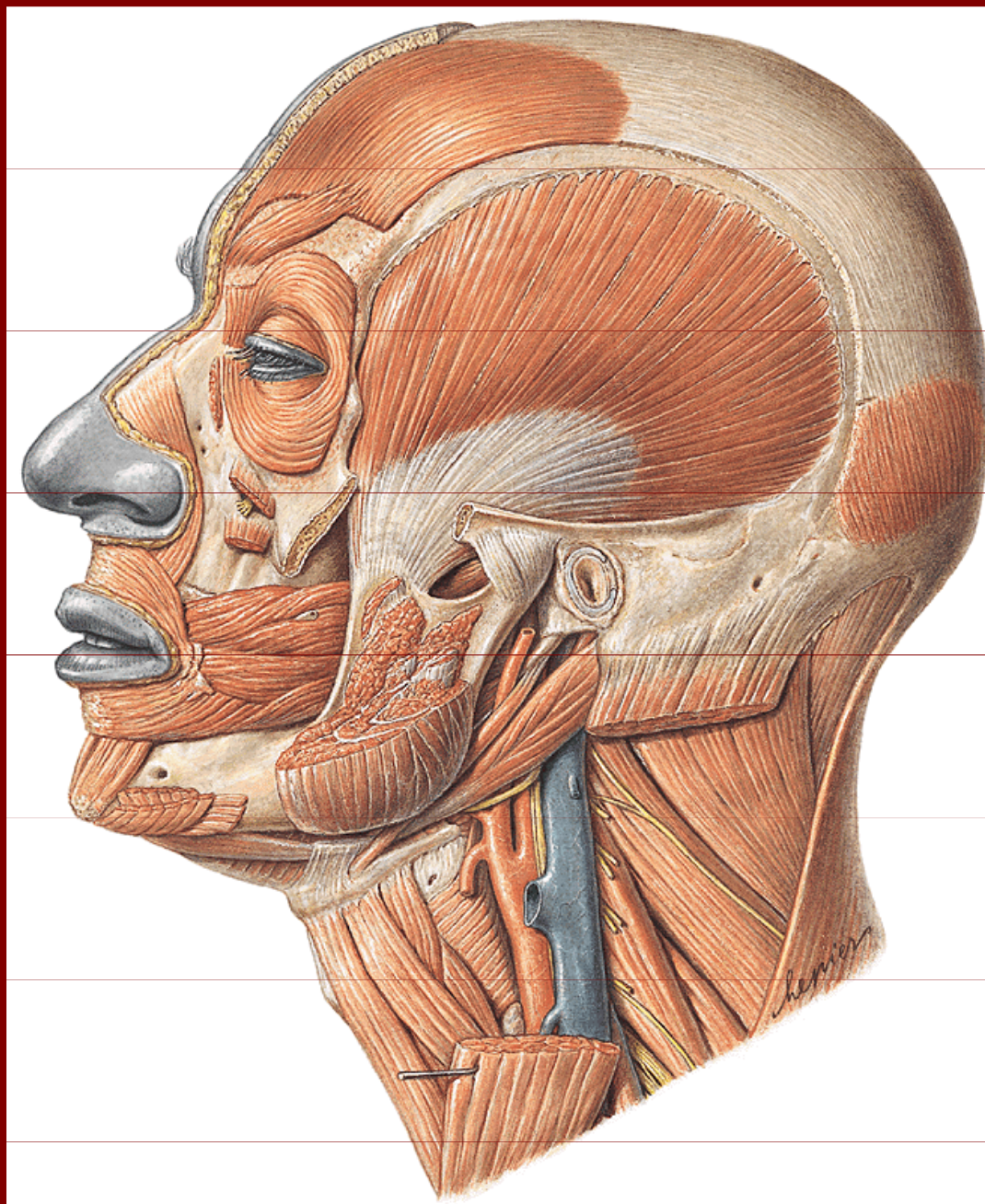


Přehled svalů hlavy



Svaly hlavy – žvýkací (N.V)

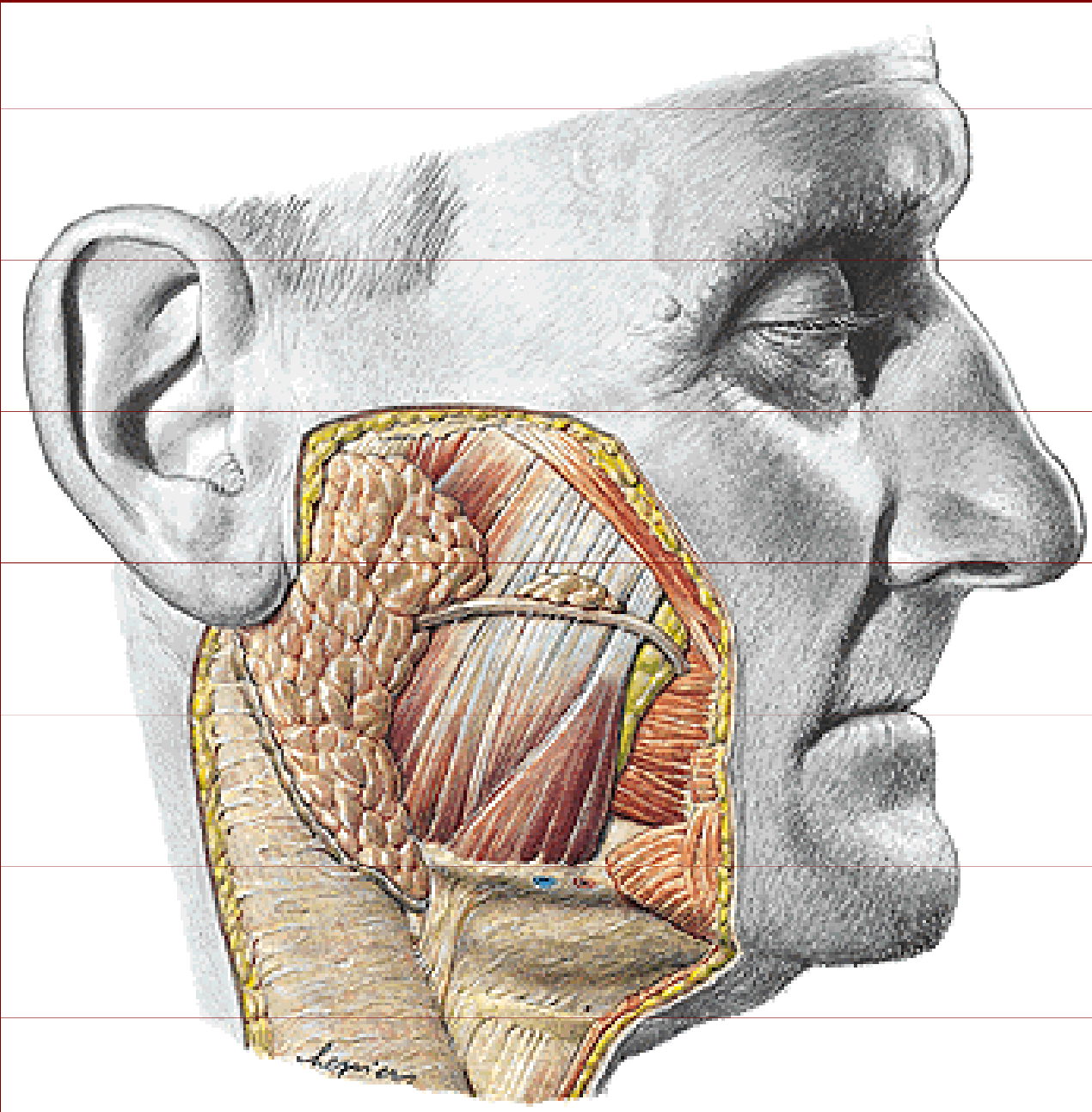
M. temporalis



Fascia parotideomasseterica

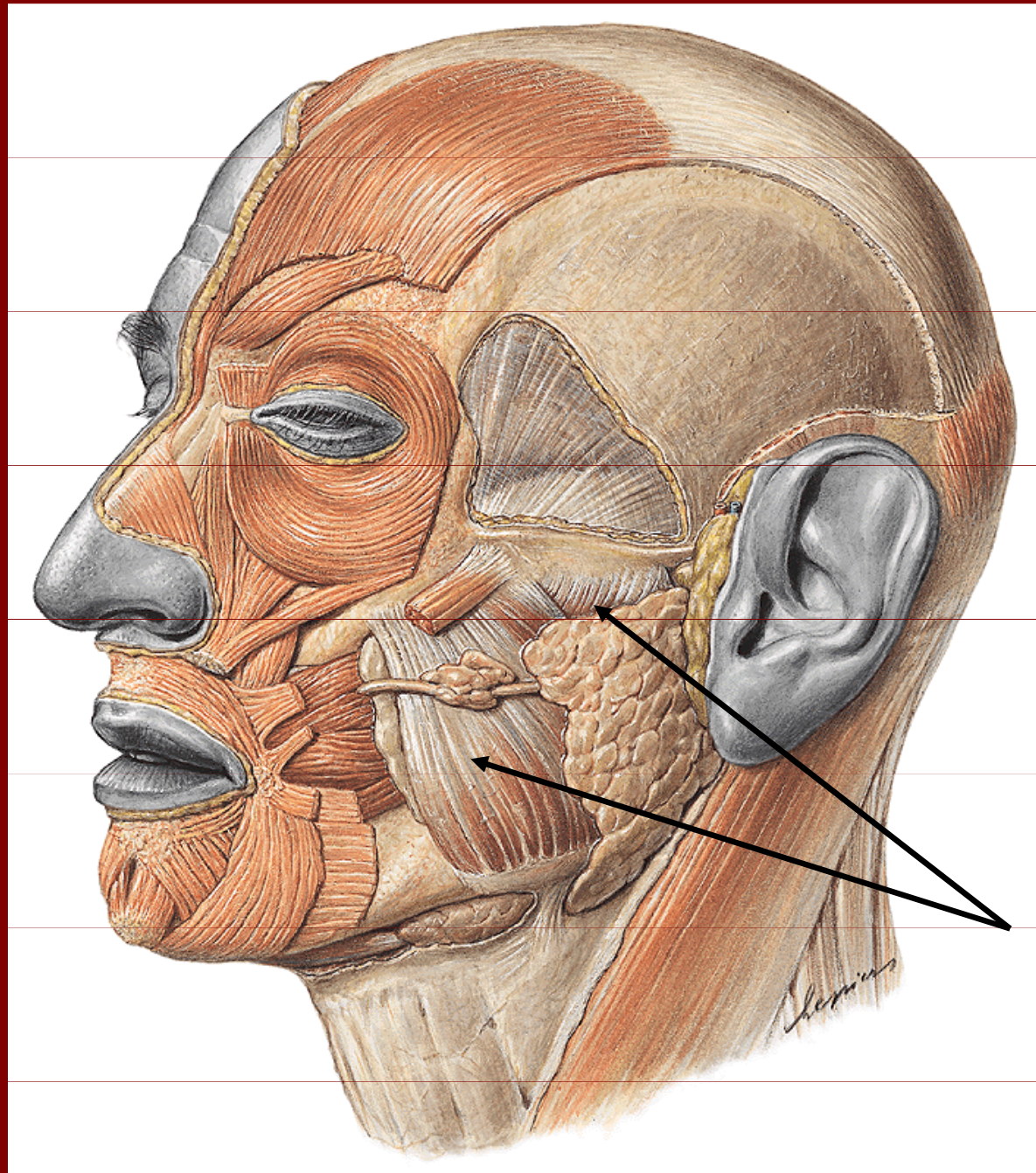
Glandula
parotis

Ductus
parotideus

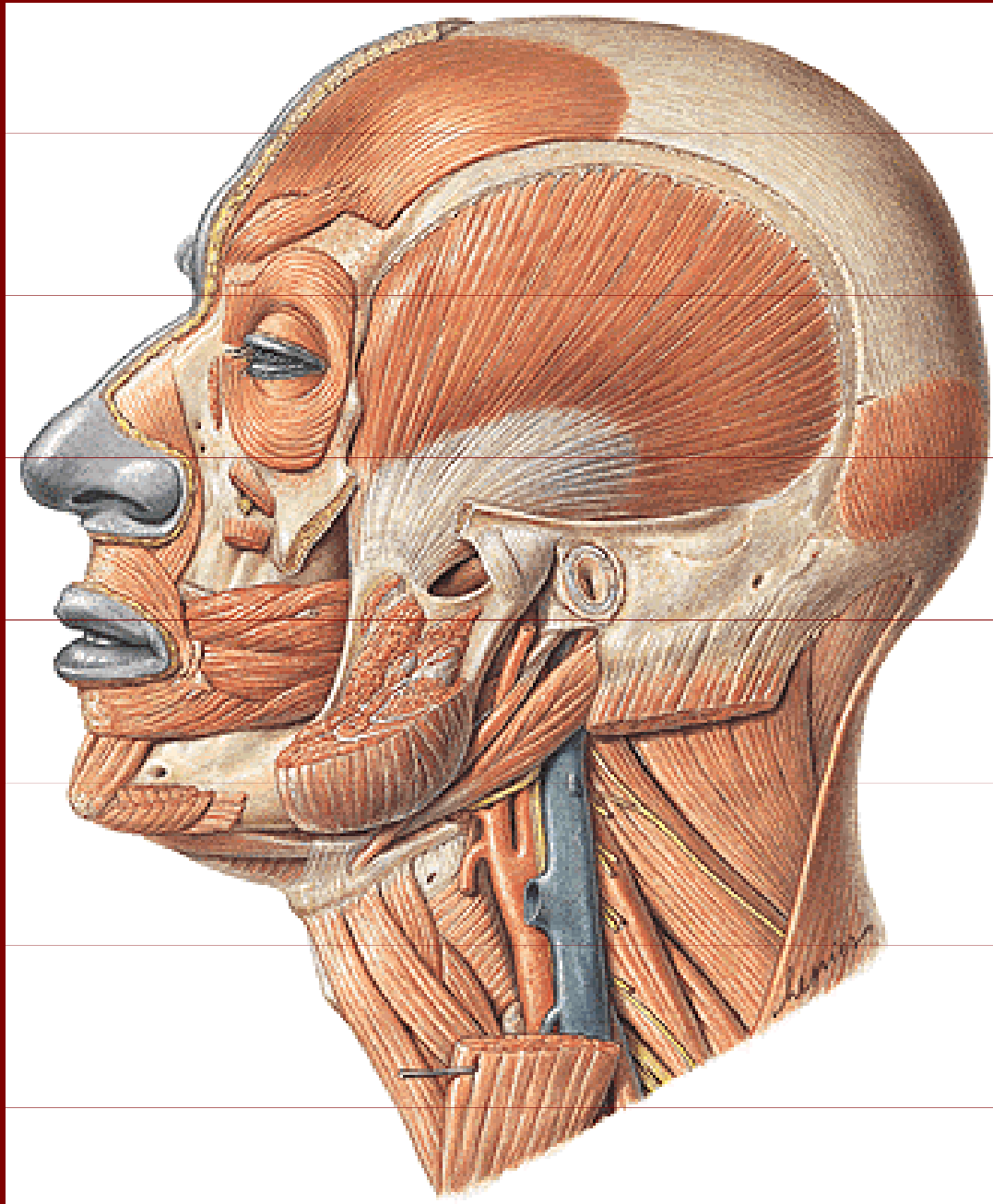


Svaly hlavy – žvýkací (N.V.)

M. masseter



Svaly žvýkací (N.V.)



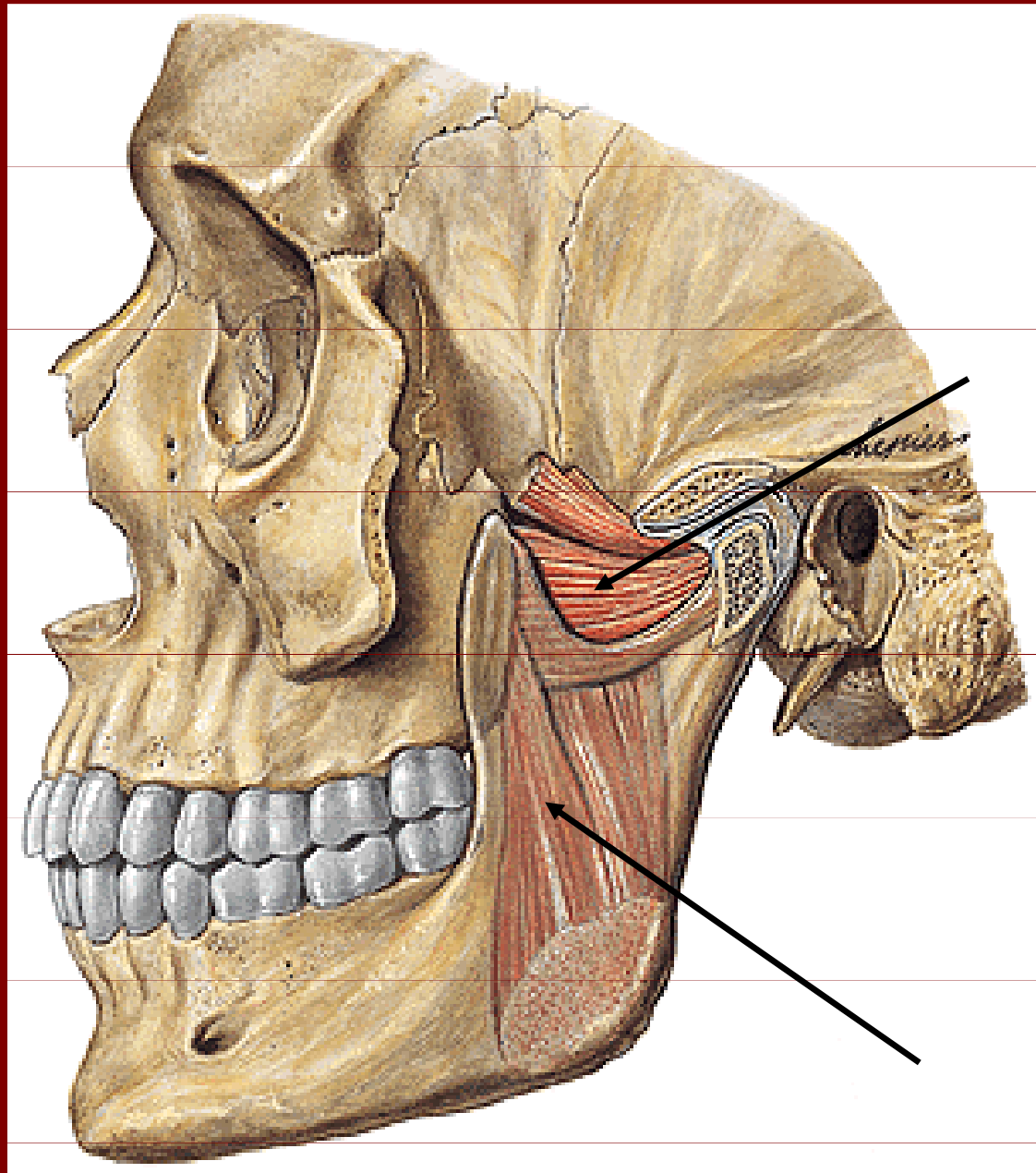
M.temporalis:

elevace mandibuly, retruze

M.masseter:

elevace mandibuly, protruze

Svaly hlavy – žvýkací (N.V.)



Mm. pterygoidei

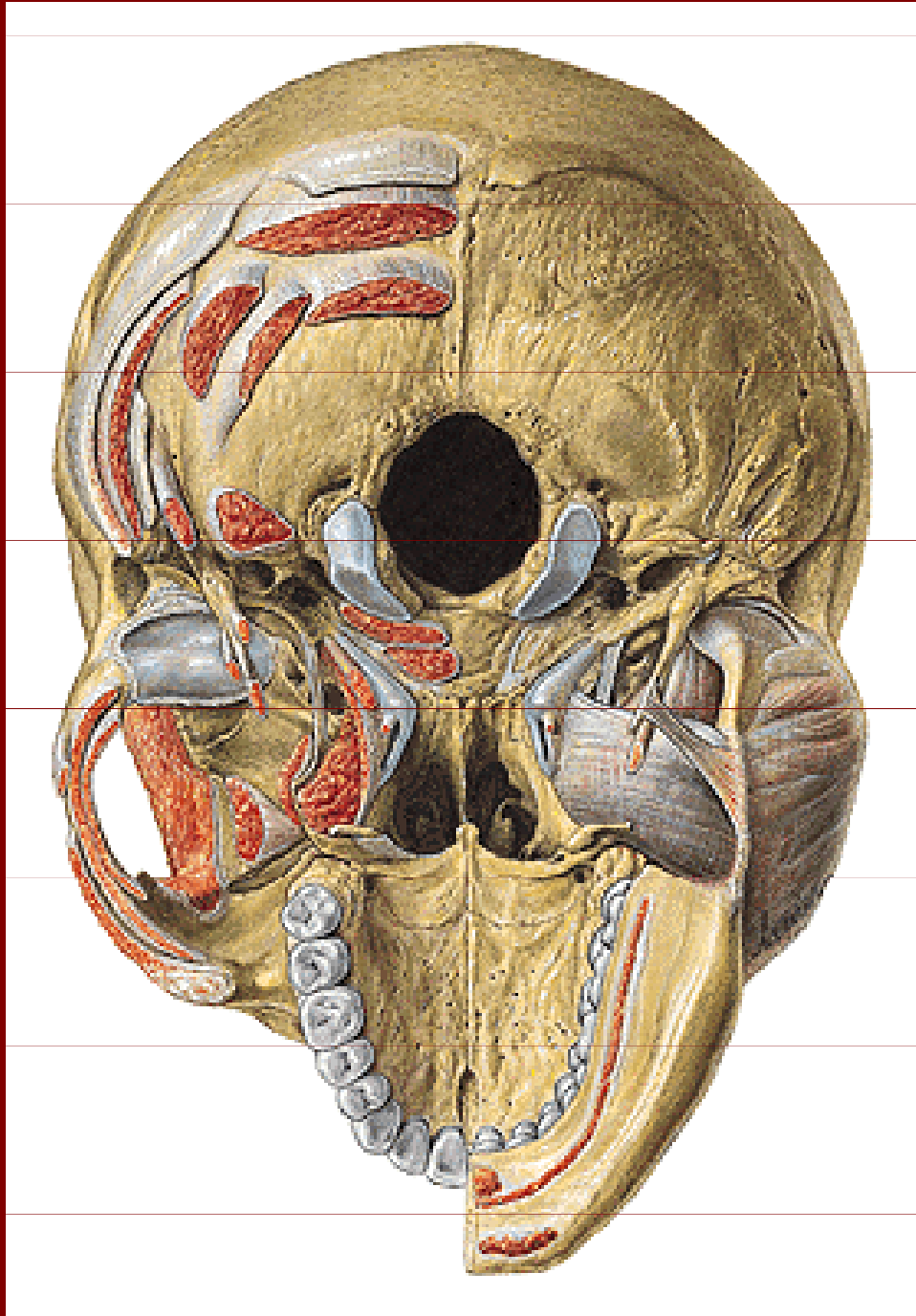
M. pterygoideus
lateralis :

Protruze mandibuly

M. pterygoideus
medialis:

lateropulze

Žvýkácí svaly

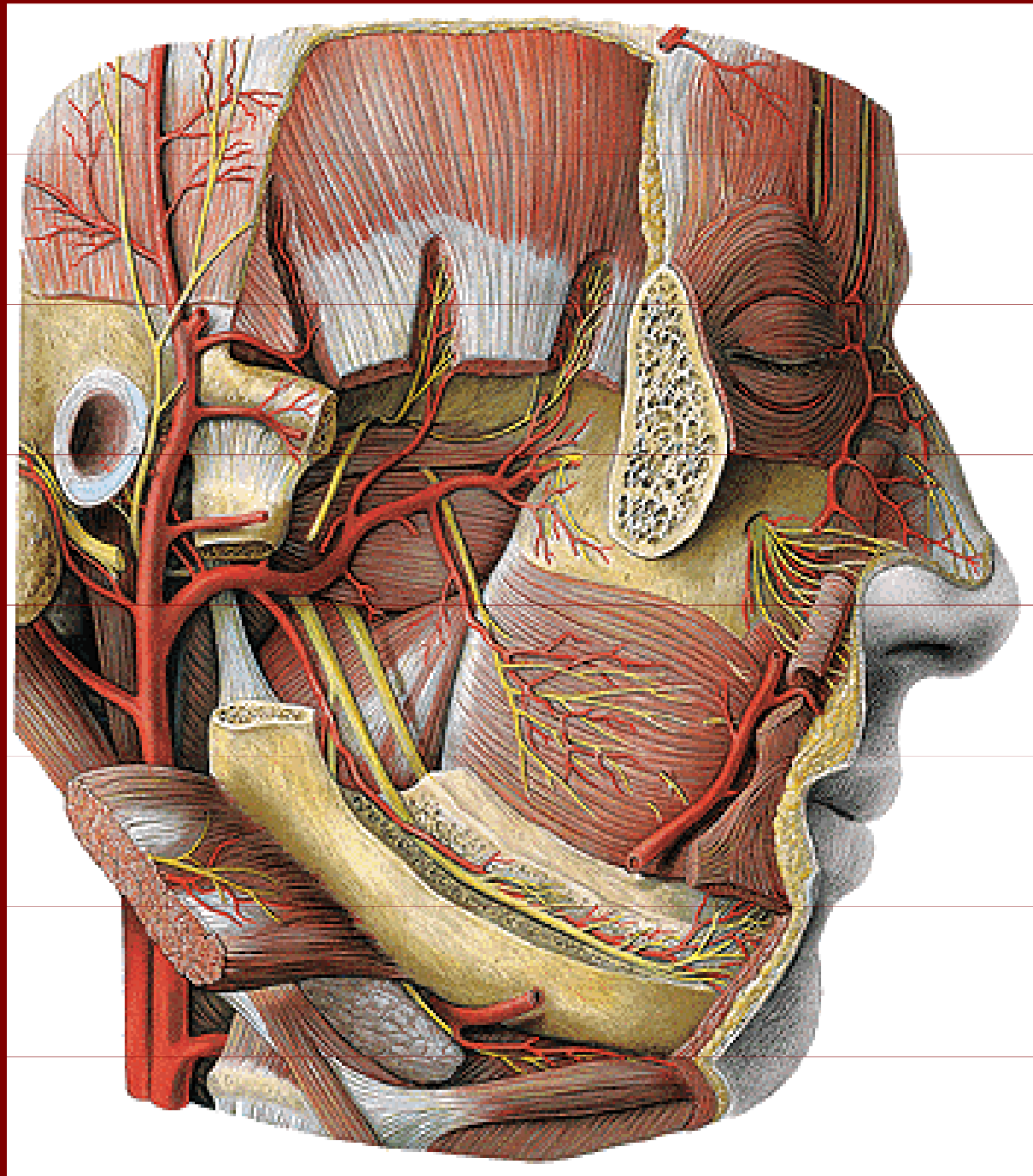


m.masseter

m.pterygoideus lateralis

m.pterygoideus
medialis

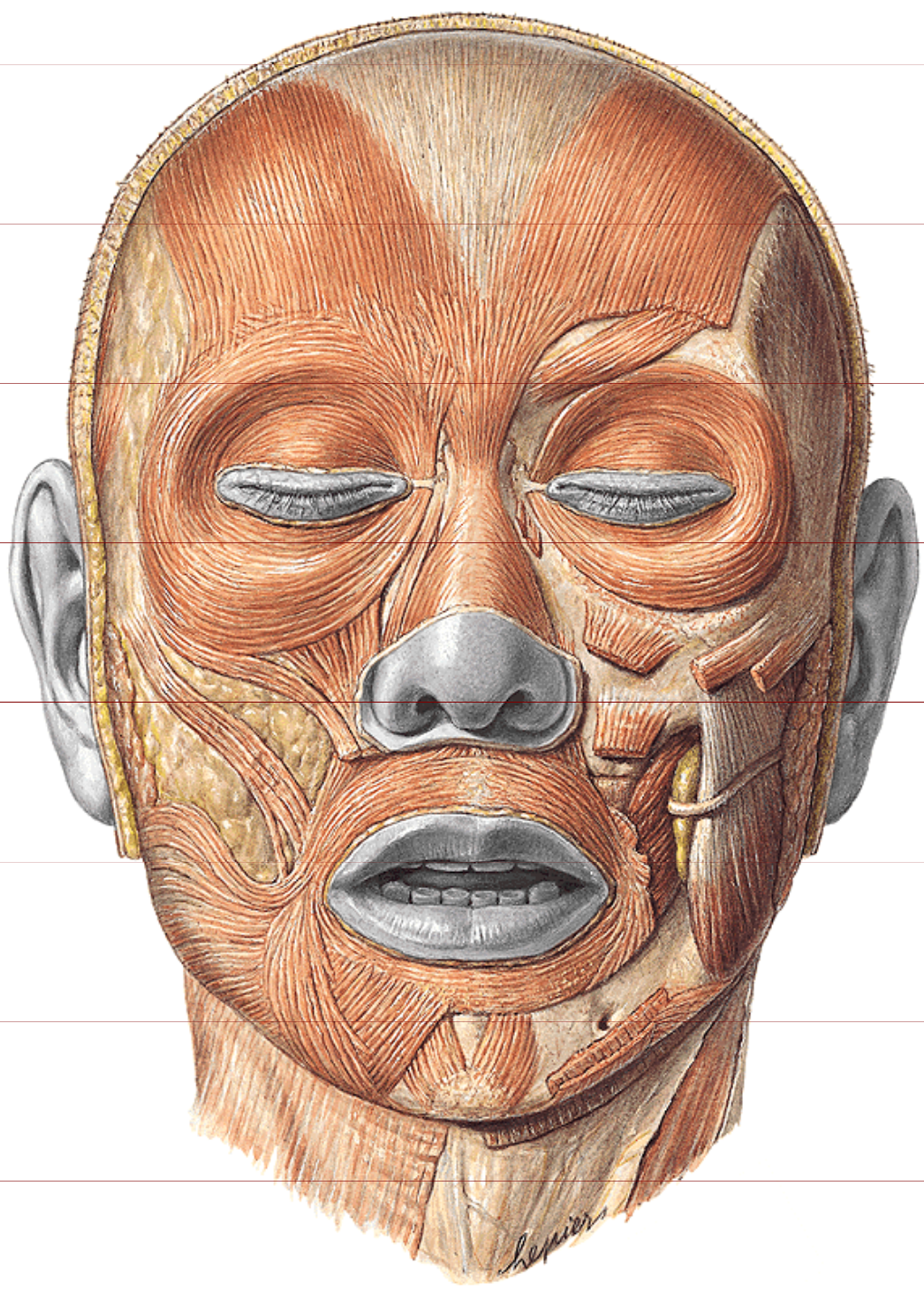
Pohled do fossa infratemporalis



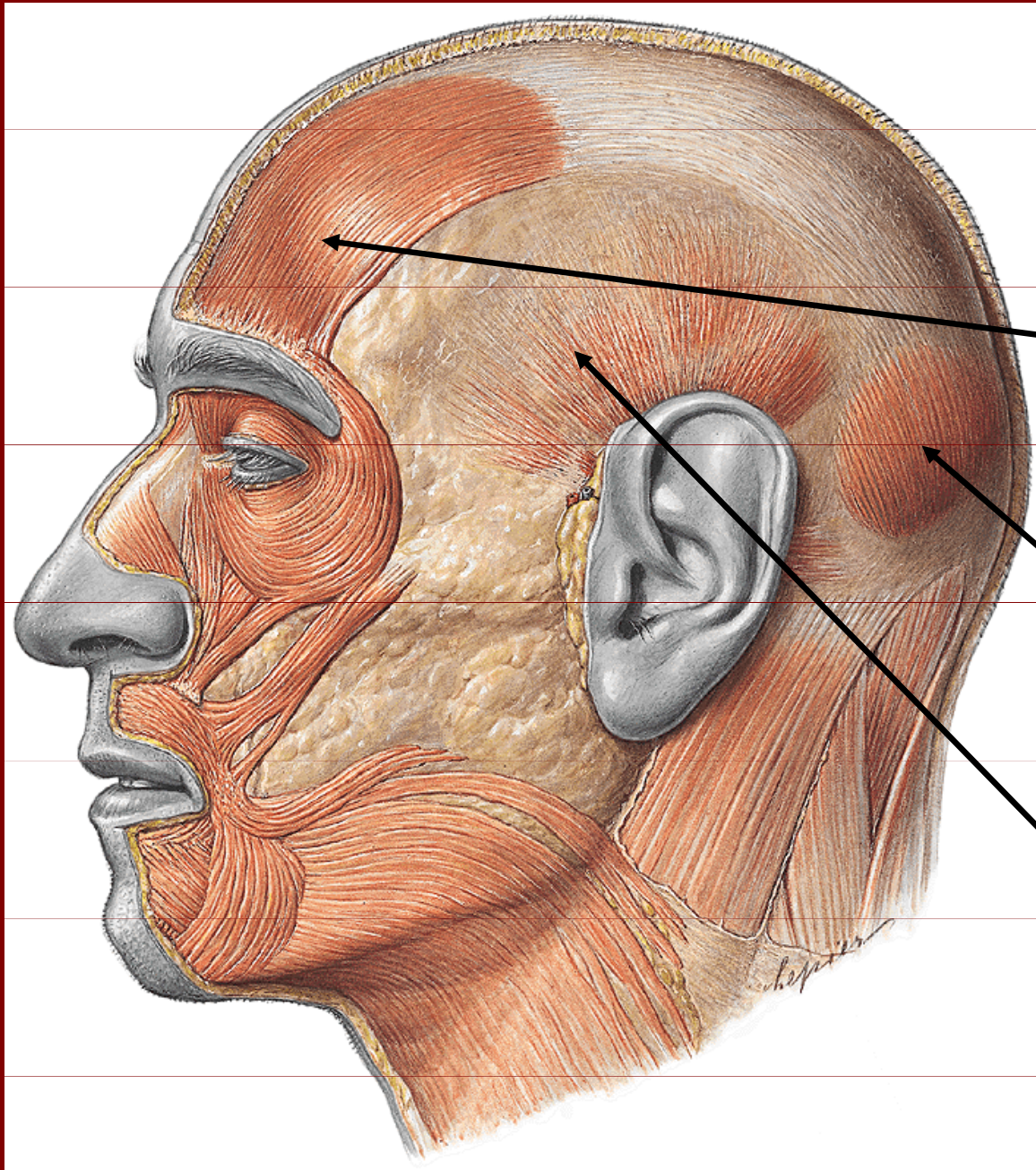
Svaly hlavy – mimické (N.VII.)

Svaly:

- klenby lební
- štěrbiny oční
- štěrbiny ústní
- nosu
- zevního ucha



Svaly klenby lebni (m.epicranius)



M.occipitofrontalis:

venter frontalis

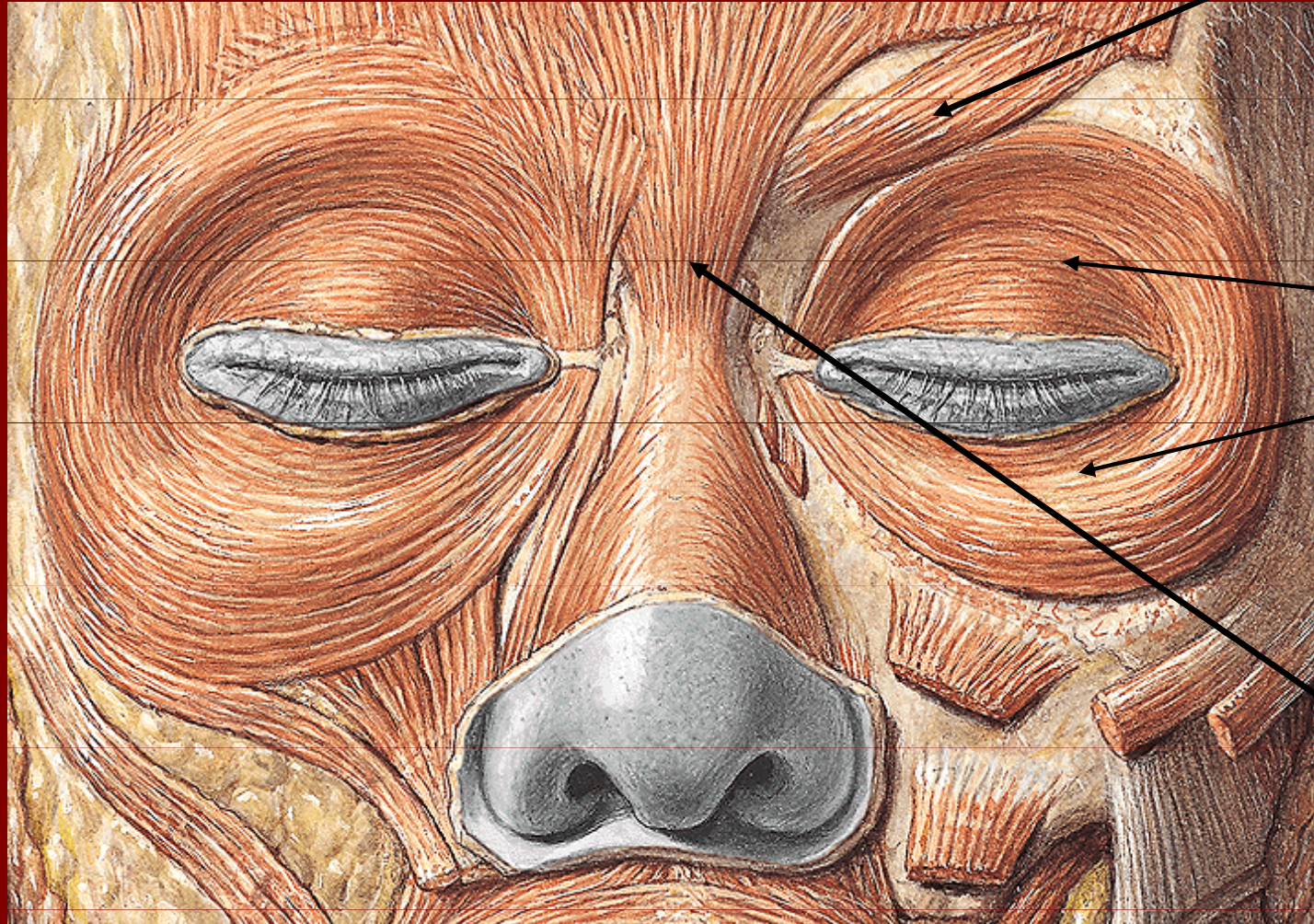
galea

aponeurotica

venter occipitalis

M.temporoparietalis

Svaly štěrbiny oční



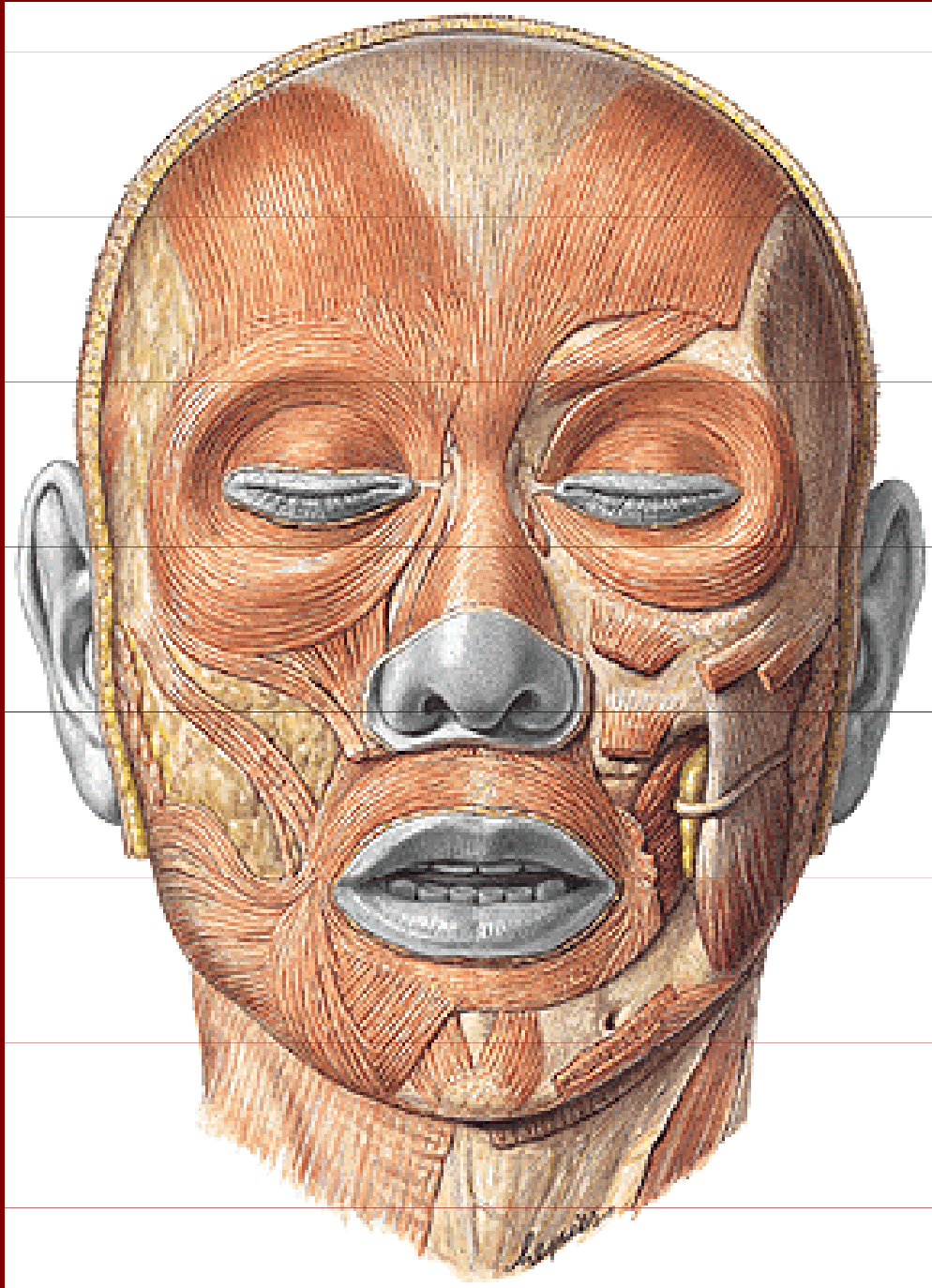
M. corrugator
supercilii

M. orbicularis
oculi:

pars palpebralis

pars orbitalis

M. procerus



Svaly štěrbiny ústní

m.orbicularis oris

m.zygomaticus major

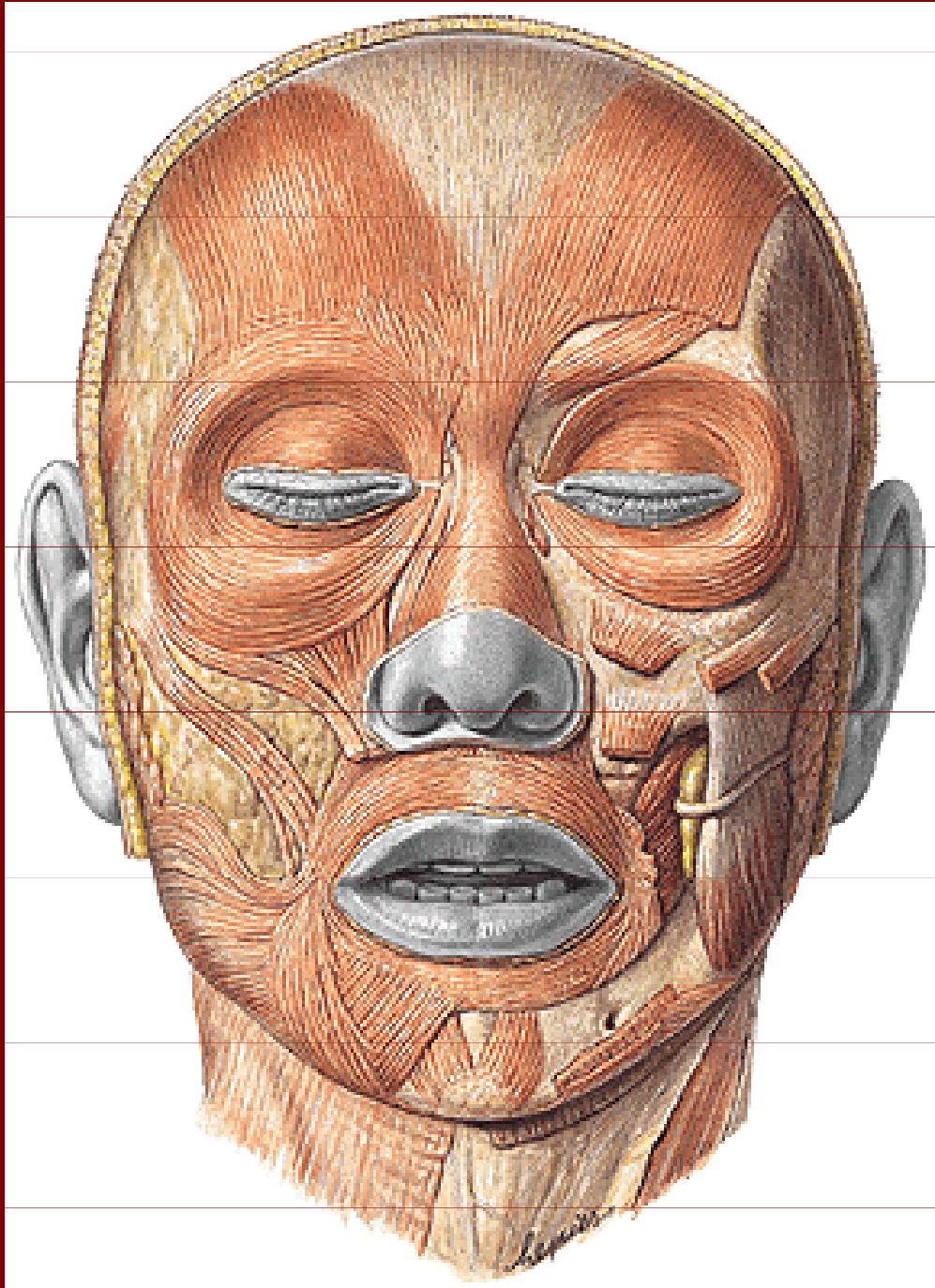
m.zygomaticus minor

m.levator labii sup.

m.levator anguli oris

m.nasalis

m.levator labii sup.



Svaly šterbiny ústní

m.buccinator

m.risorius

m.platysma

m.depresor labii inf.

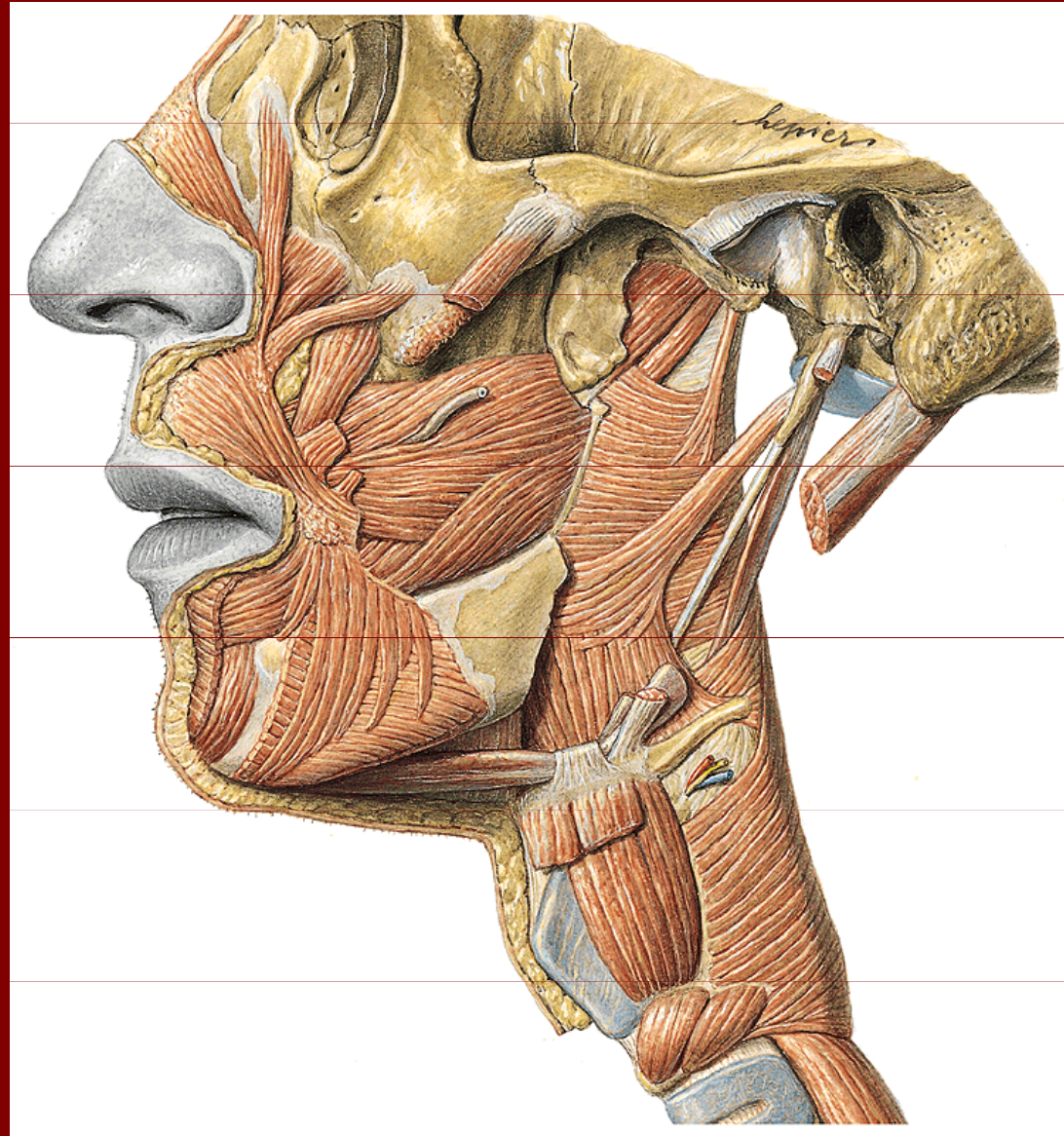
m.depresor labii inf.

m.mentalis

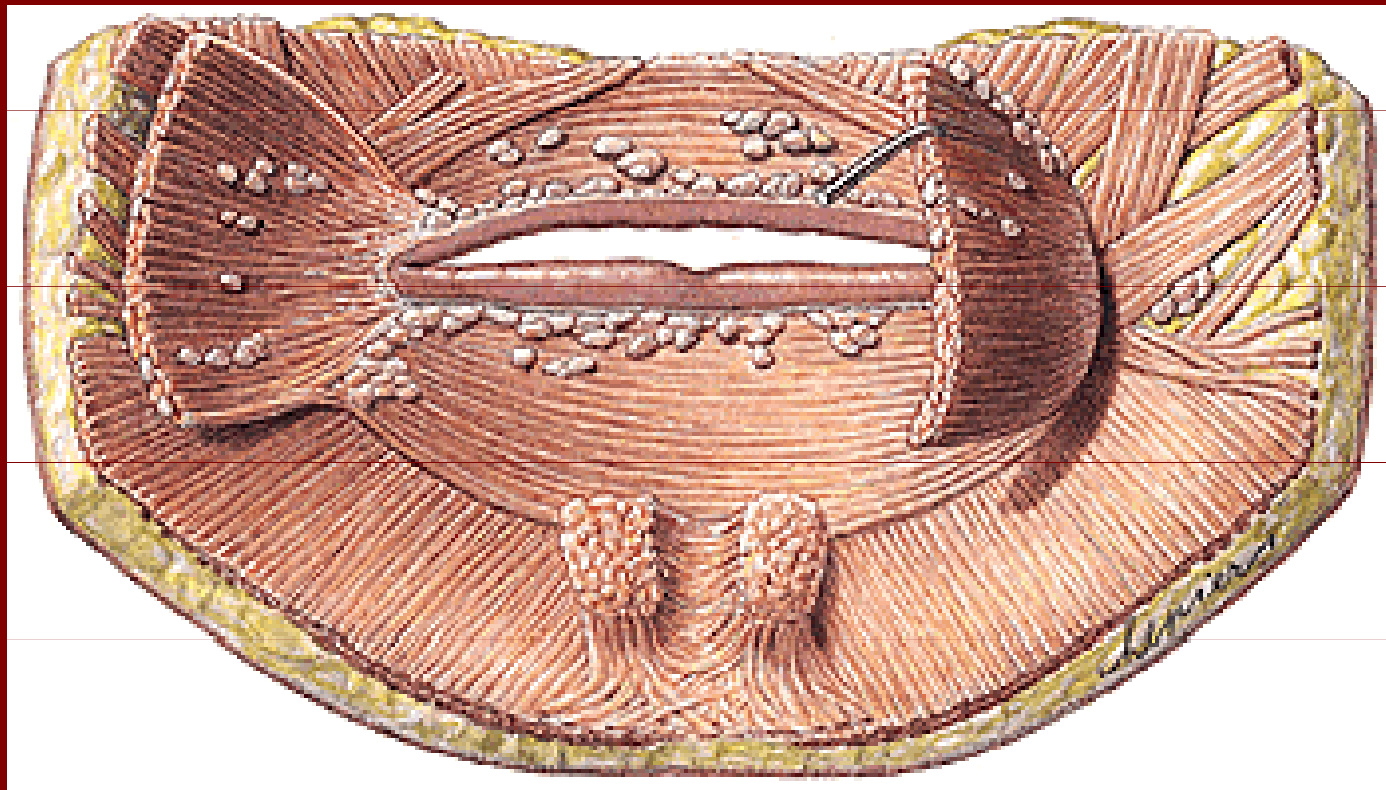
Svaly hlavy – mimické (VII)

Hluboké:

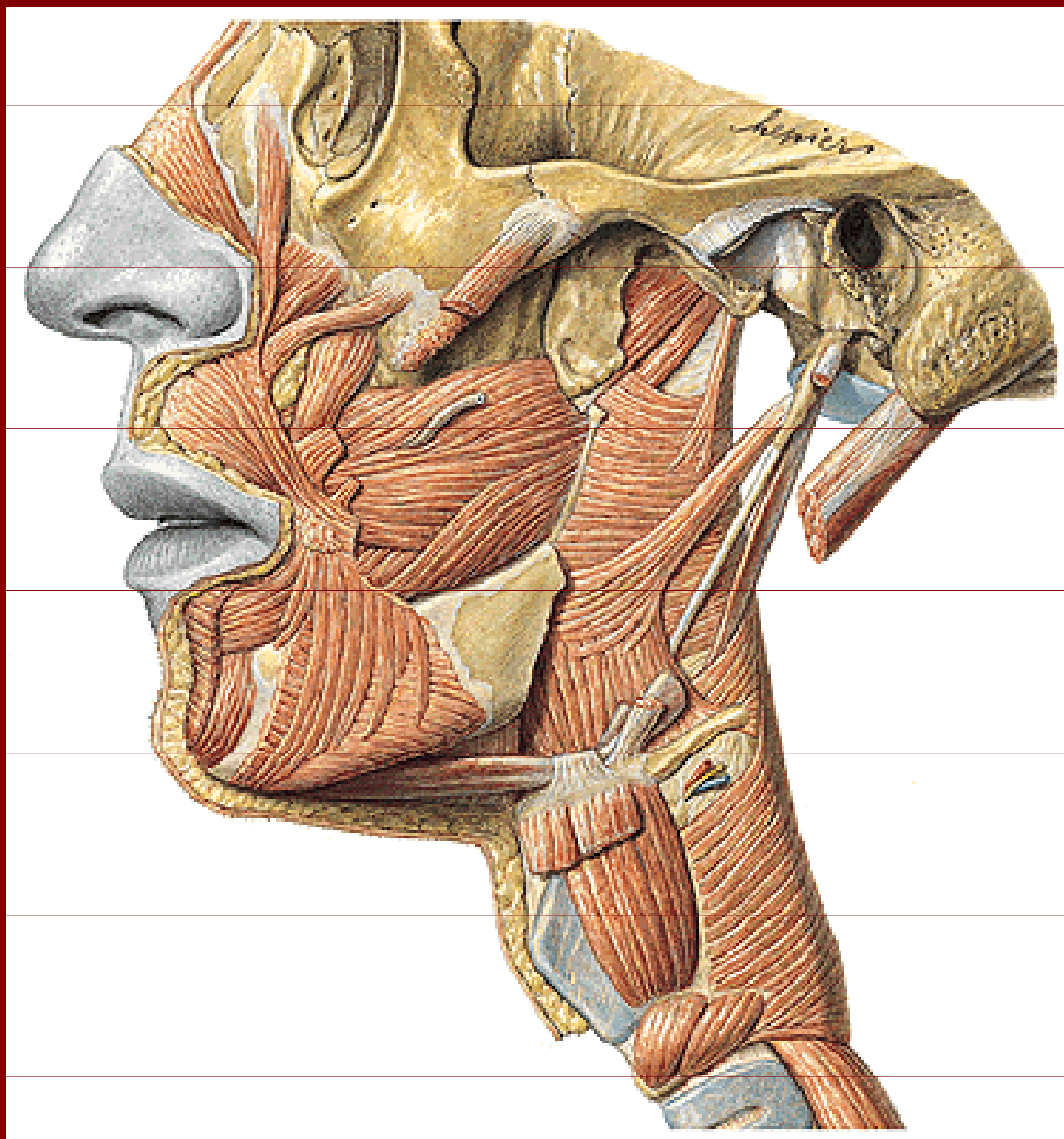
m. buccinator



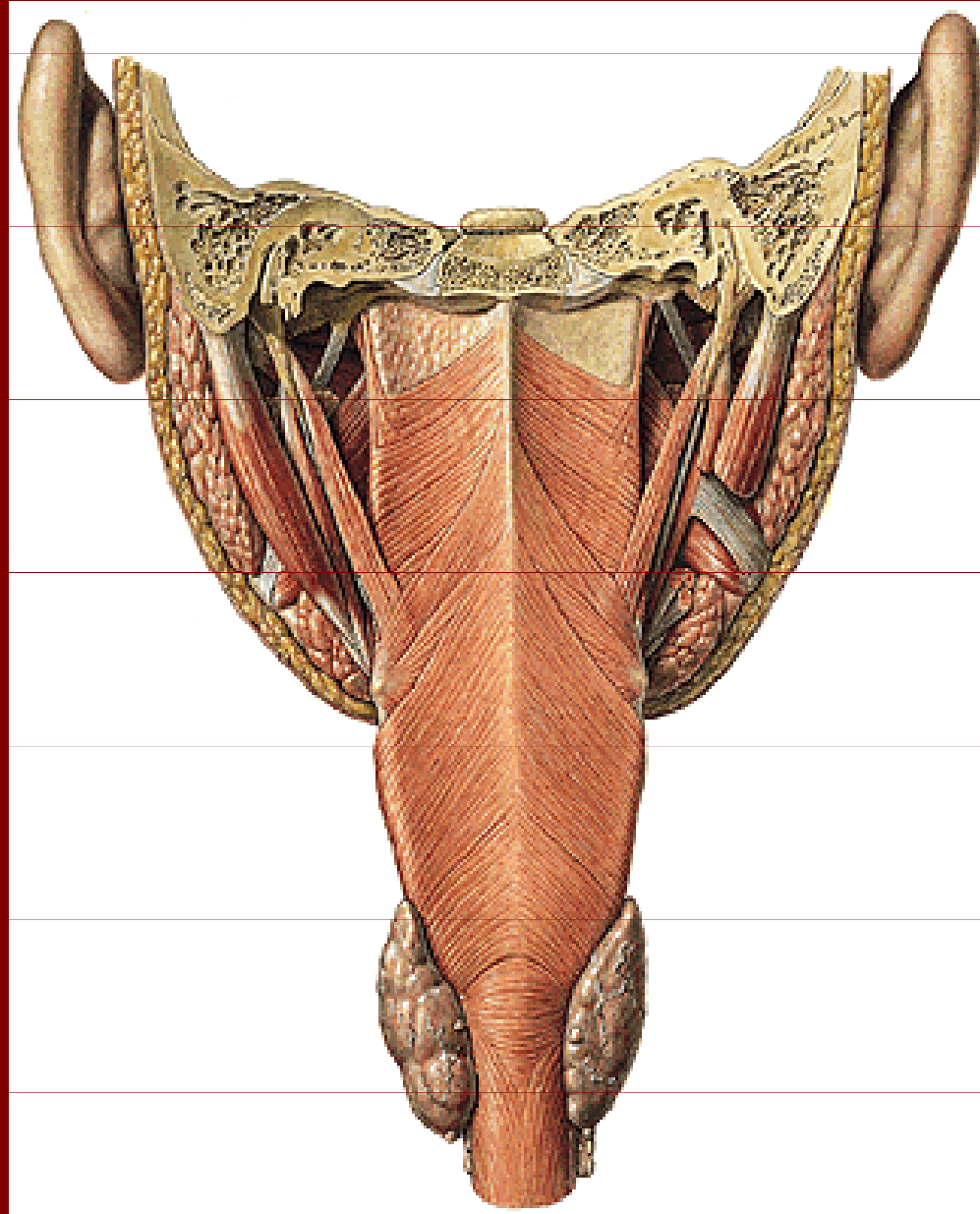
Svaly mimické

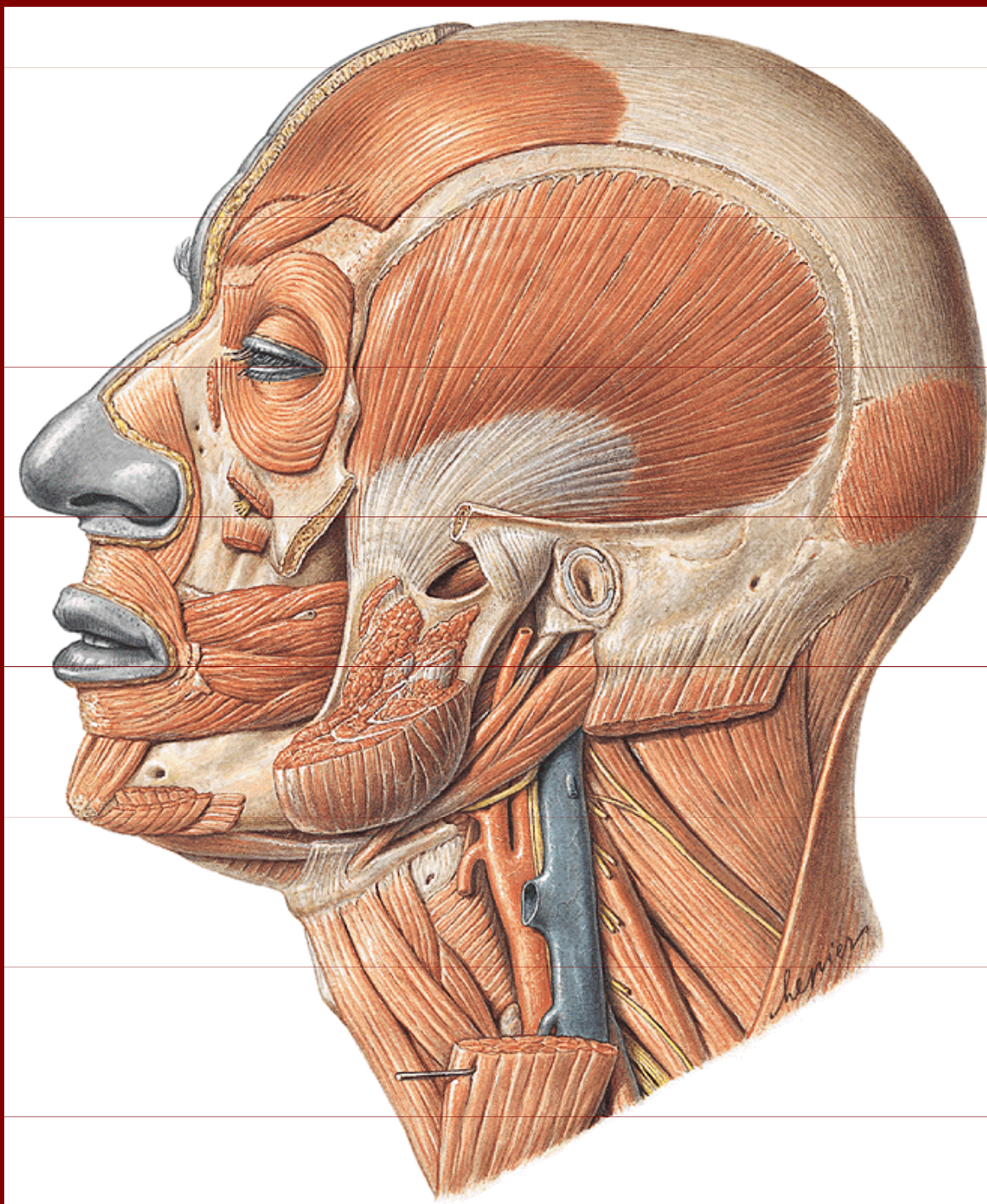


Svaly mimické



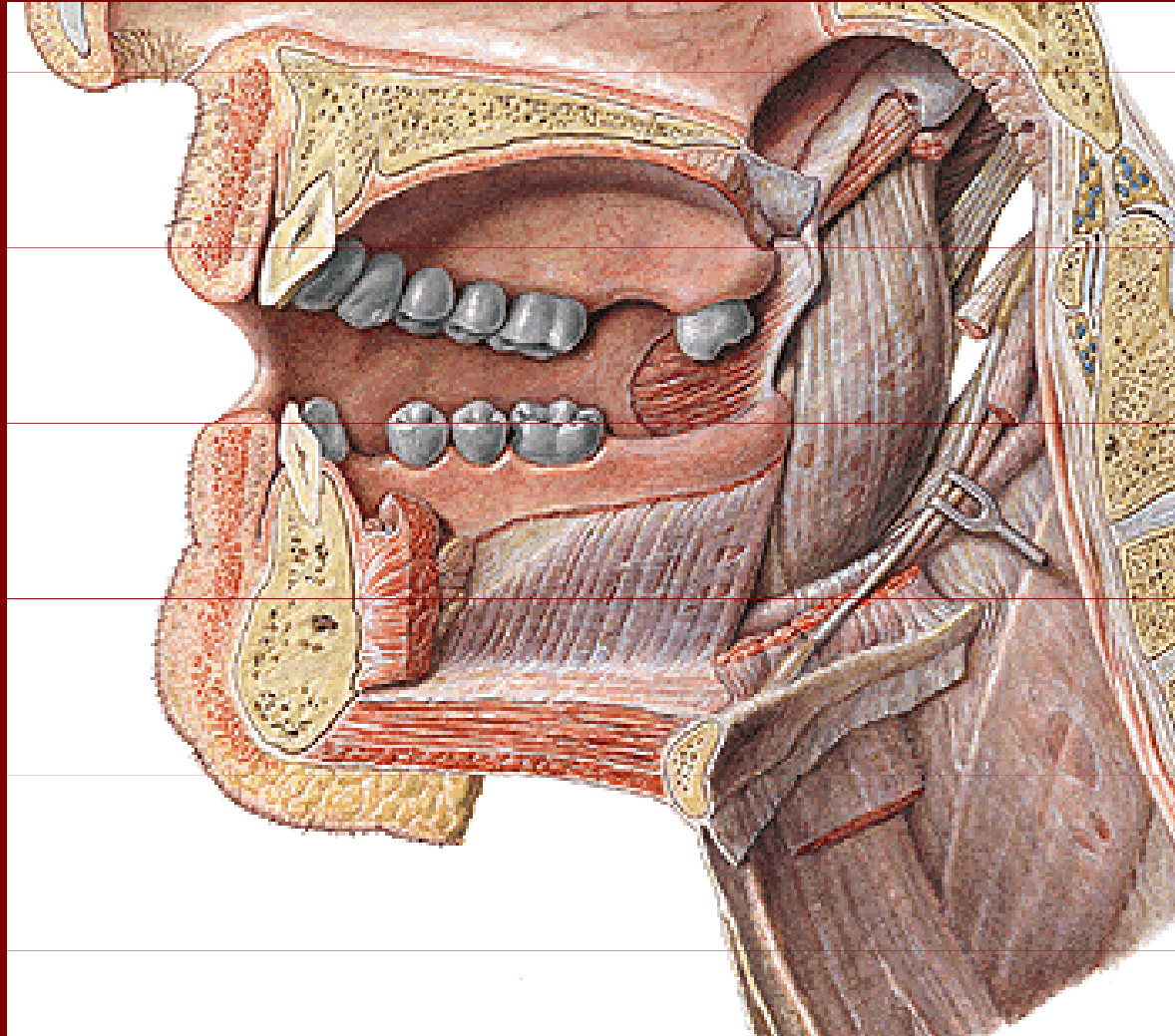
m.stylohyoideus



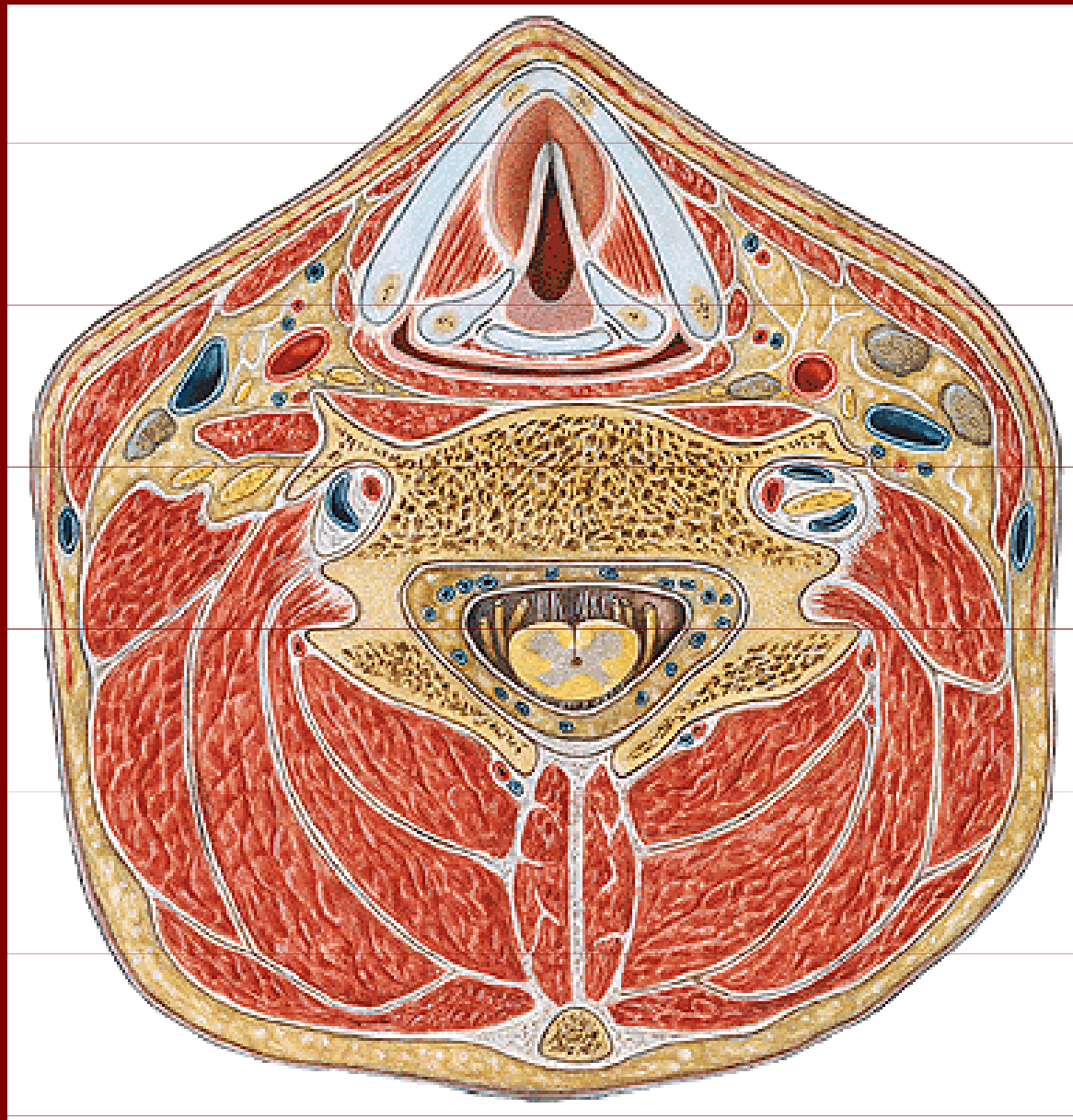


Přehled
hlubokých
svalů
mimických

Svaly tváře

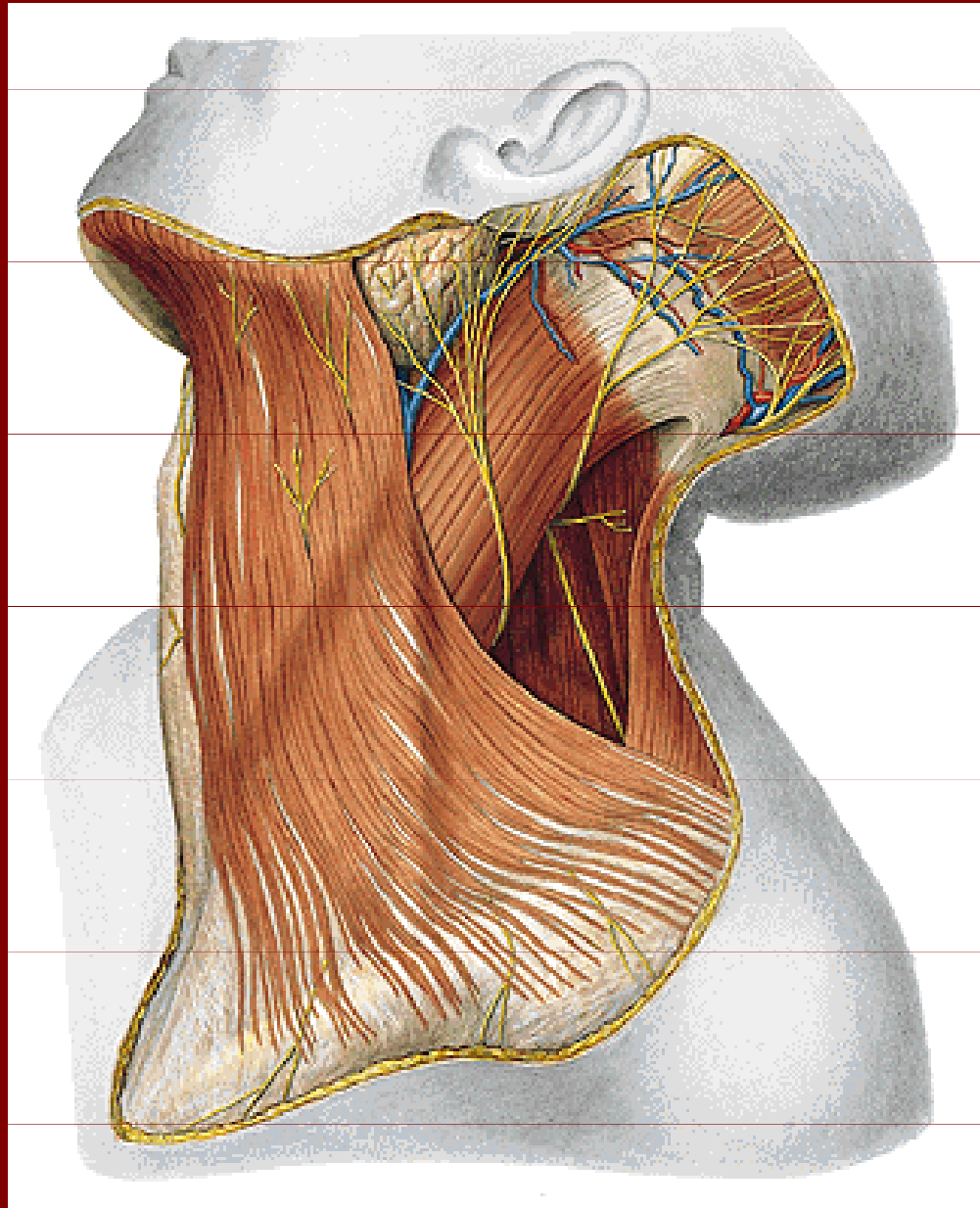


Svaly krku - přehled

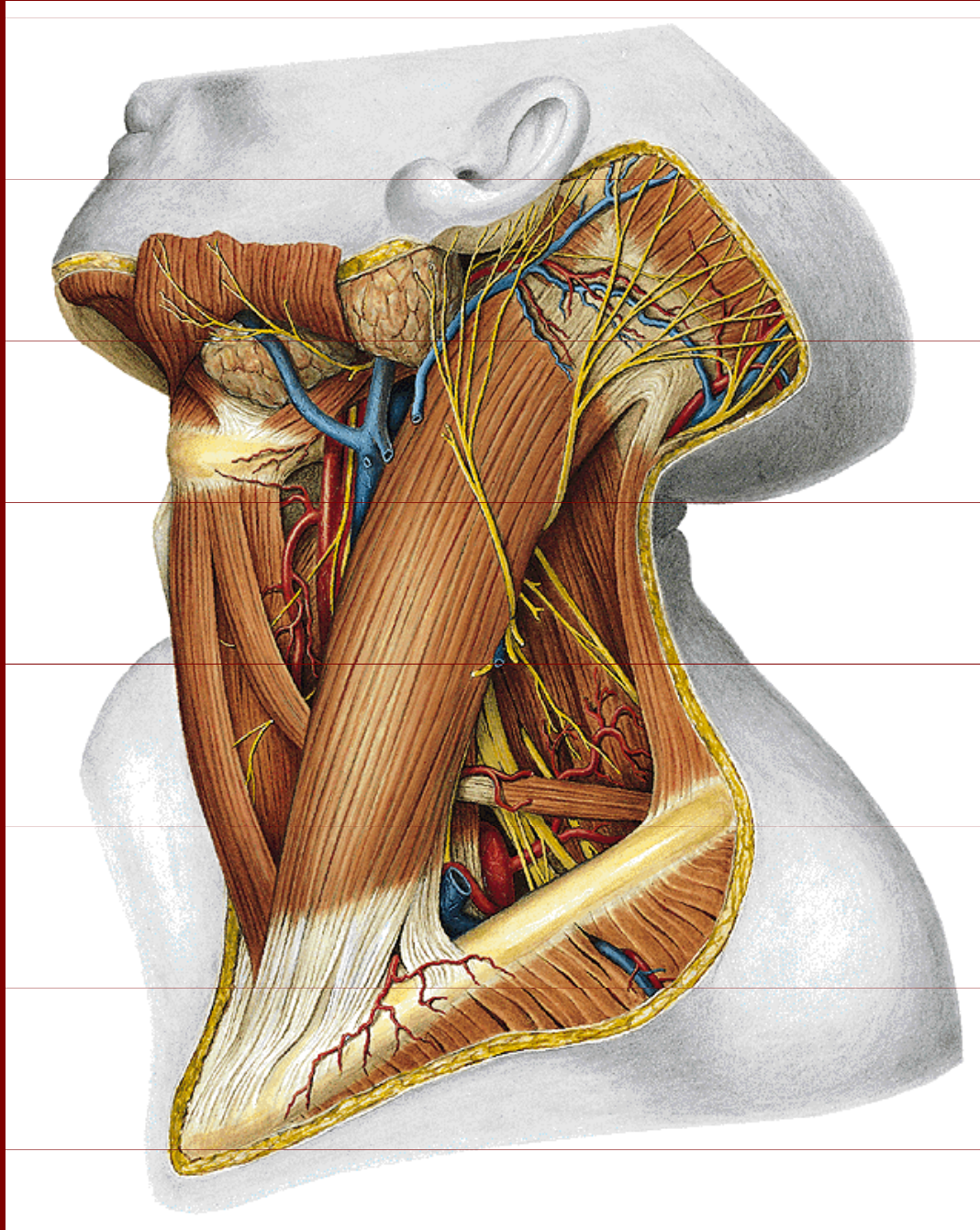


Svaly krku – povrchová vrstva

M. platysma



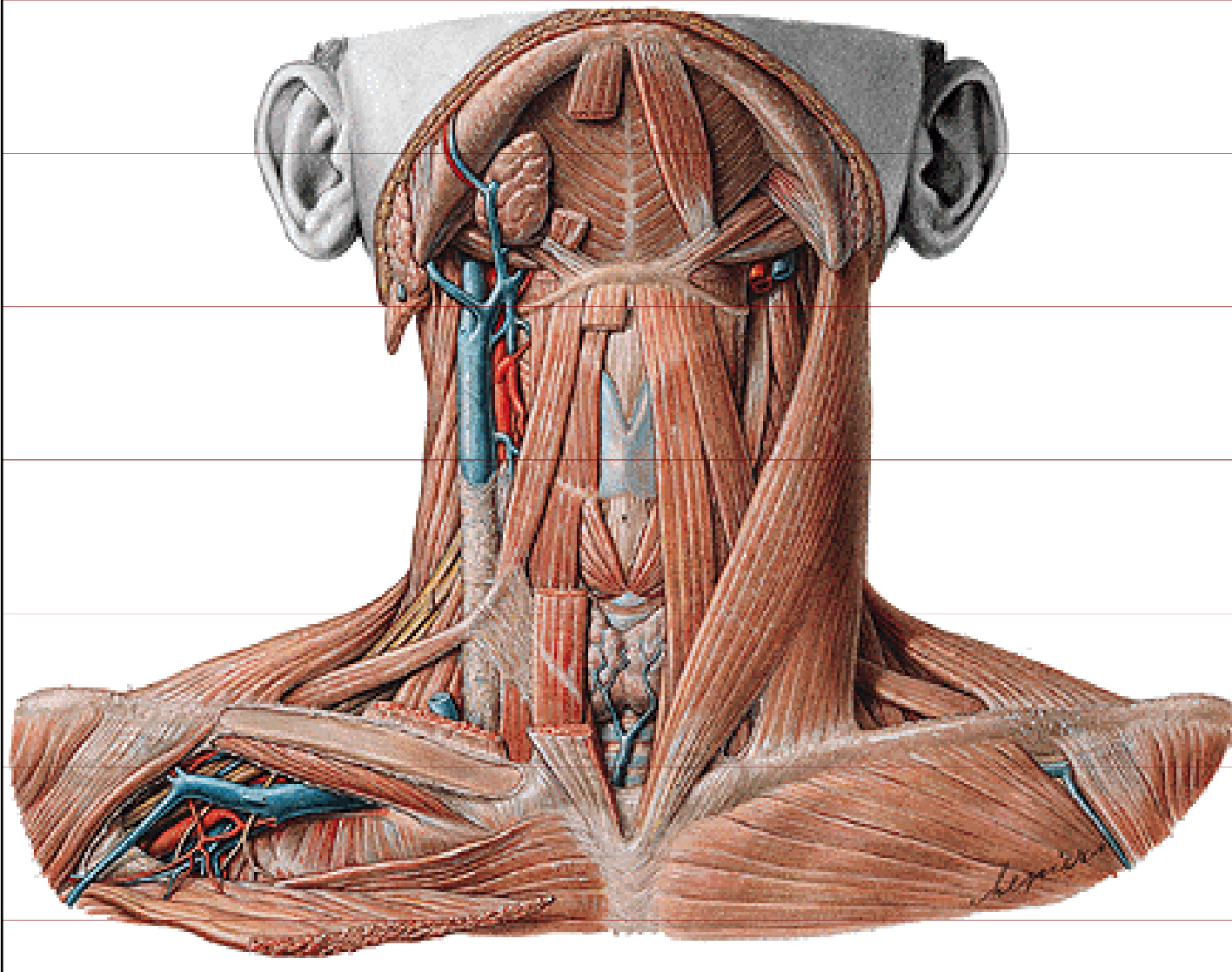
Svaly krku – povrchová vrstva



M. sternocleidomastoideus

- pars sternalis
- pars clavicularis

Svaly krku – povrchová vrstva



Mm.suprahyoidei:

m.digastricus

m.mylohyoideus

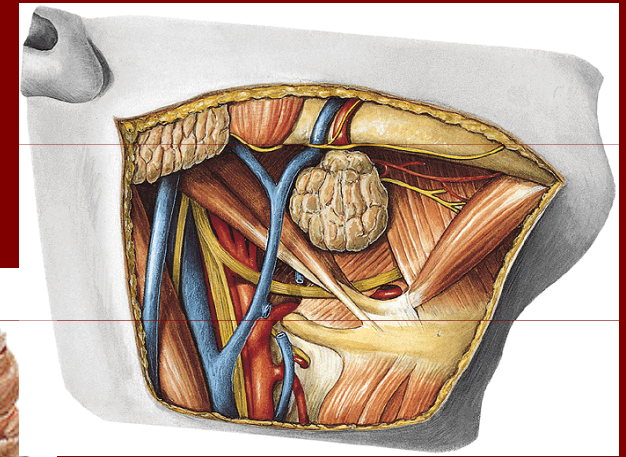
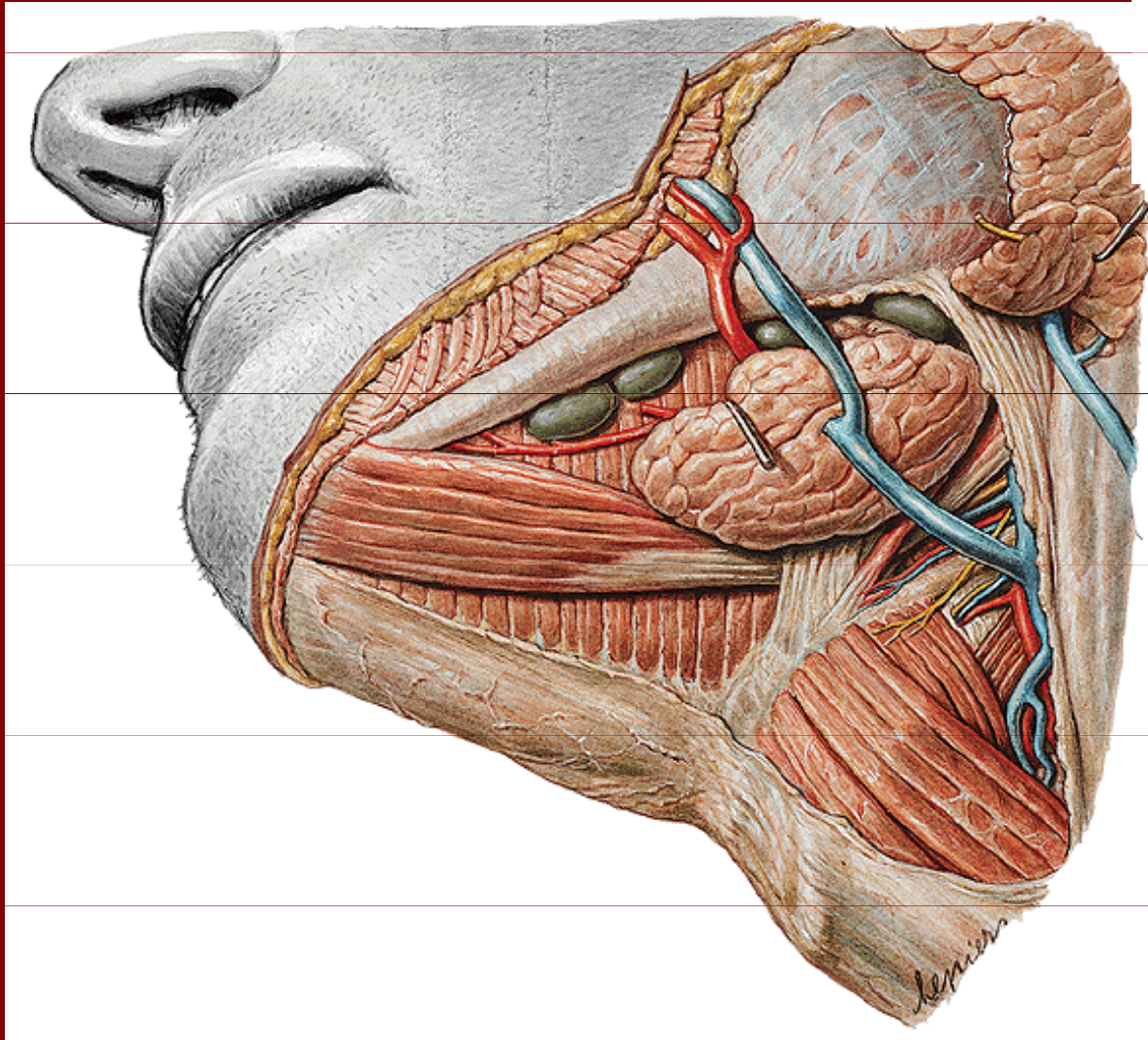
m.geniohyoideus

m.stylohyoideus

Svaly krku

Mm. suprahyoidei

(*m. digastricus*
m. mylohyoideus)

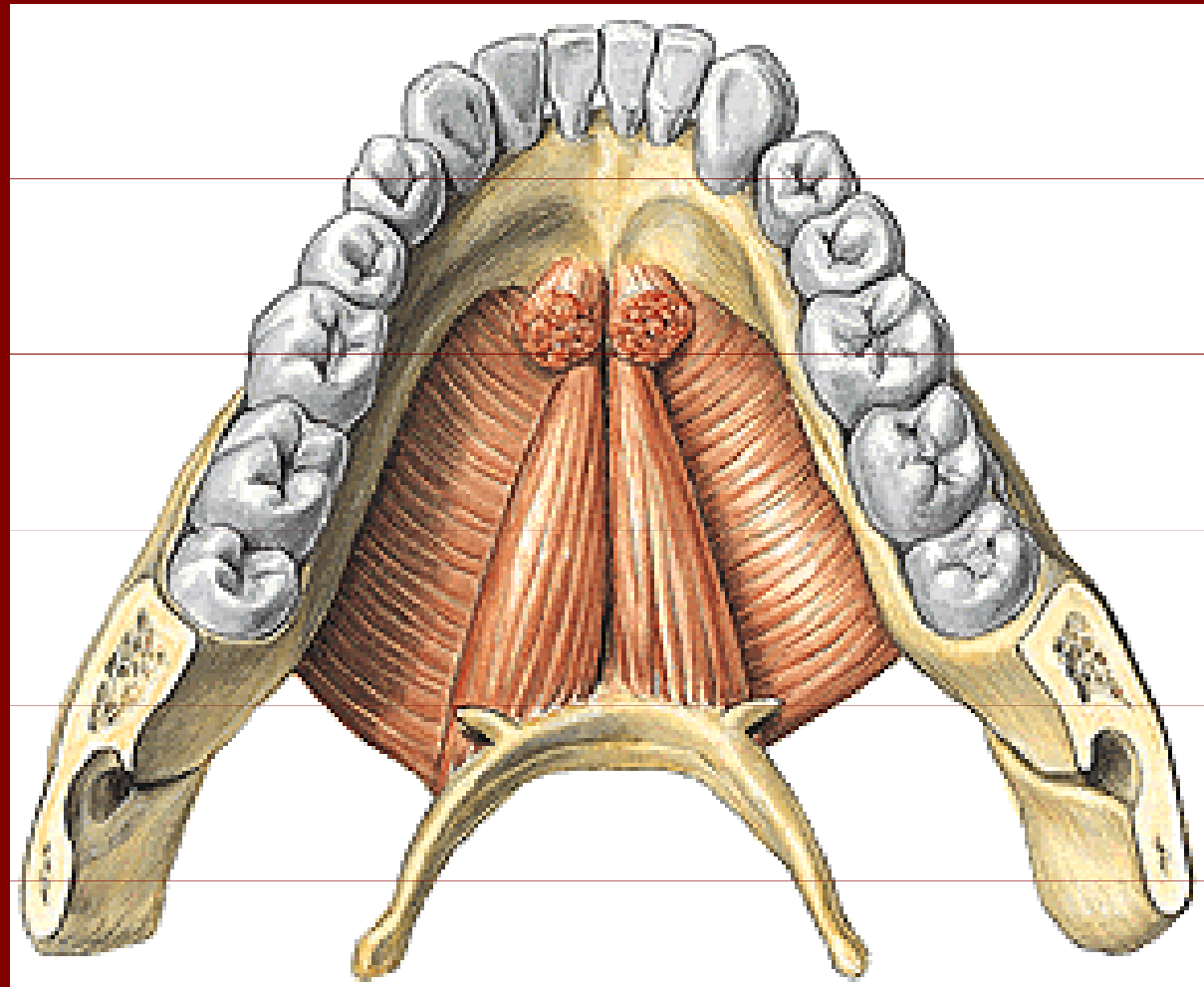


Svaly krku

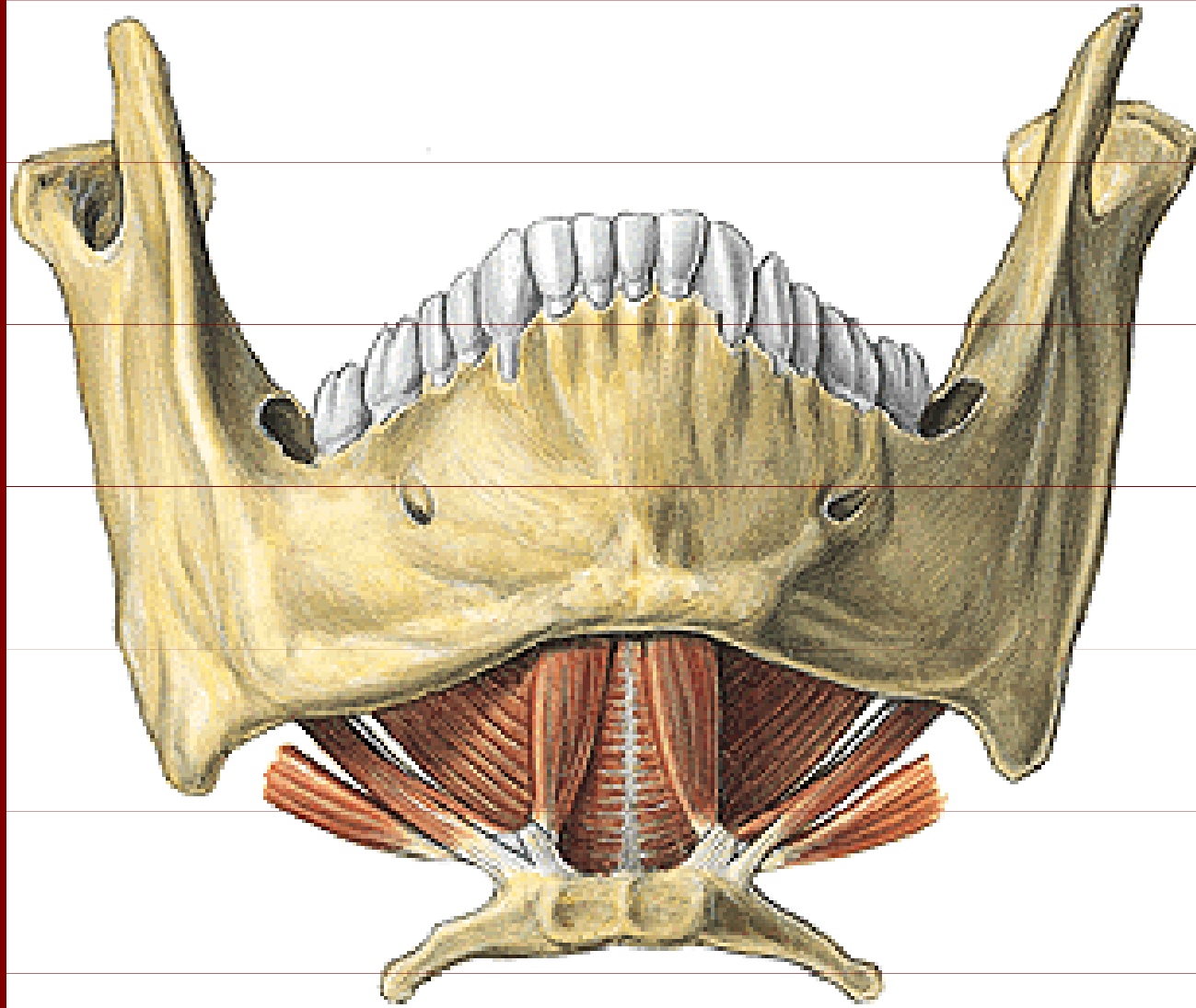
Mm. suprahyoidei:

m. mylohyoideus

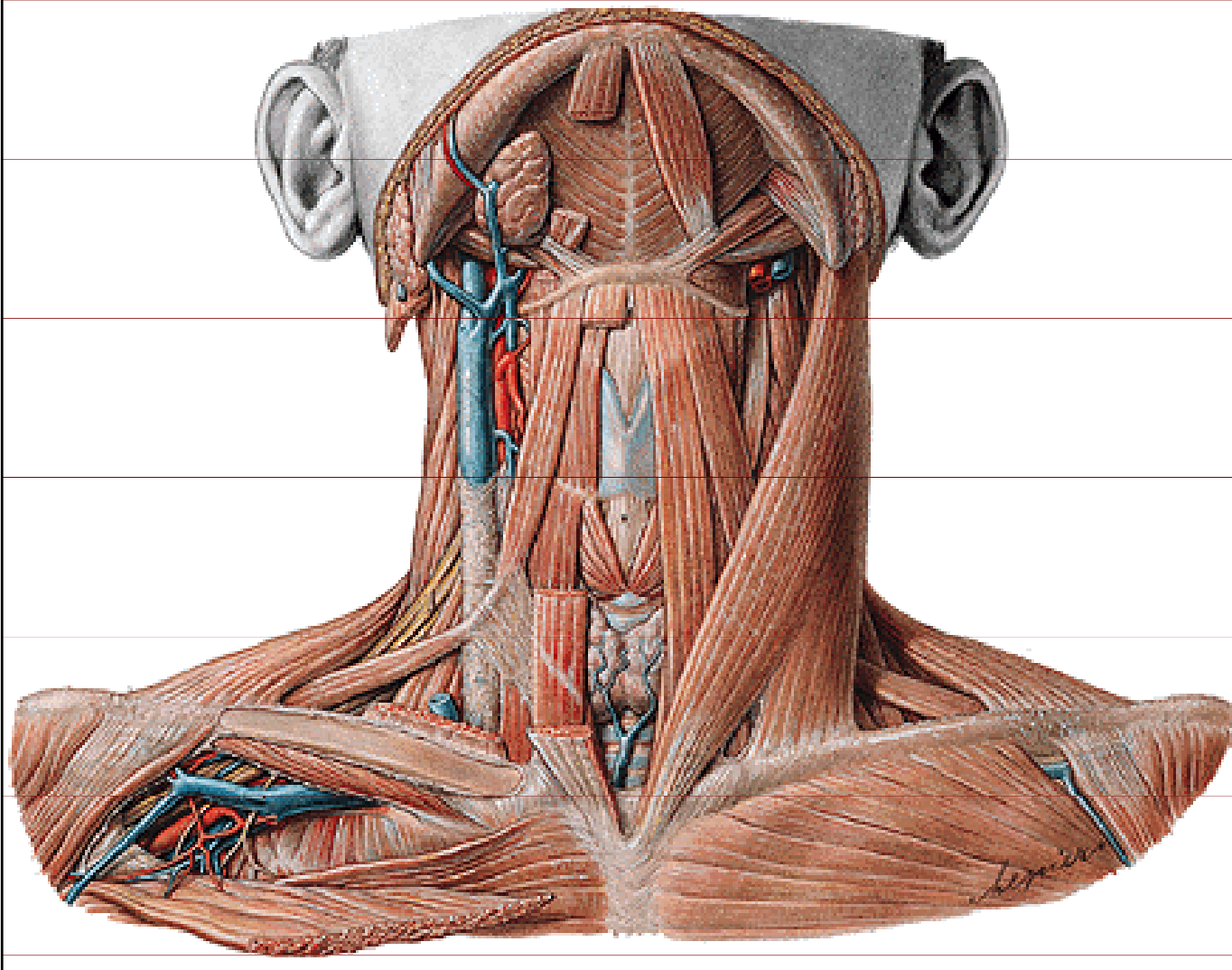
m. geniohyoideus



Svaly suprahyoidní



Svaly krku – povrchová vrstva



Mm.infrahyoidei:

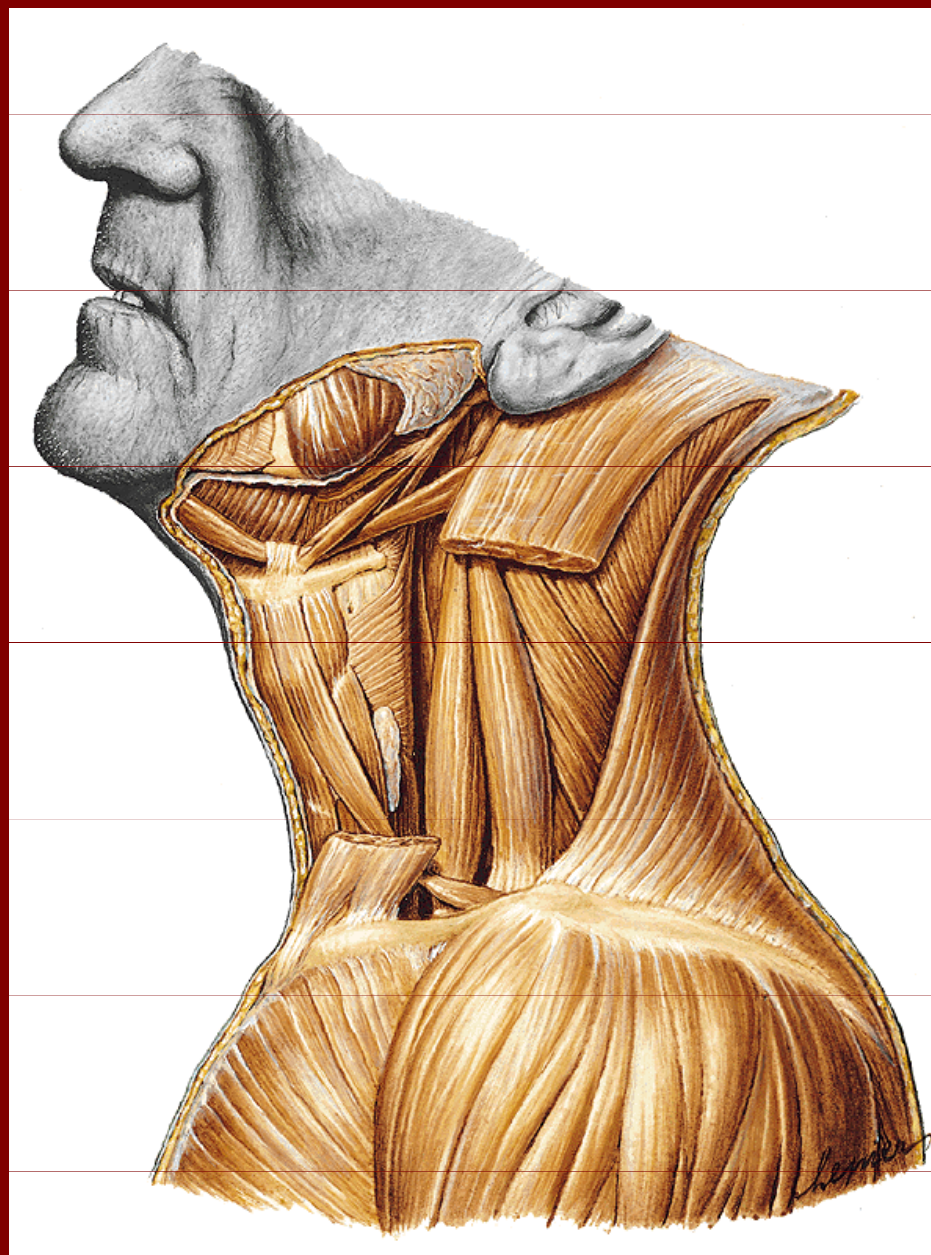
m.sternohyoideus

m.sternothyreoideus

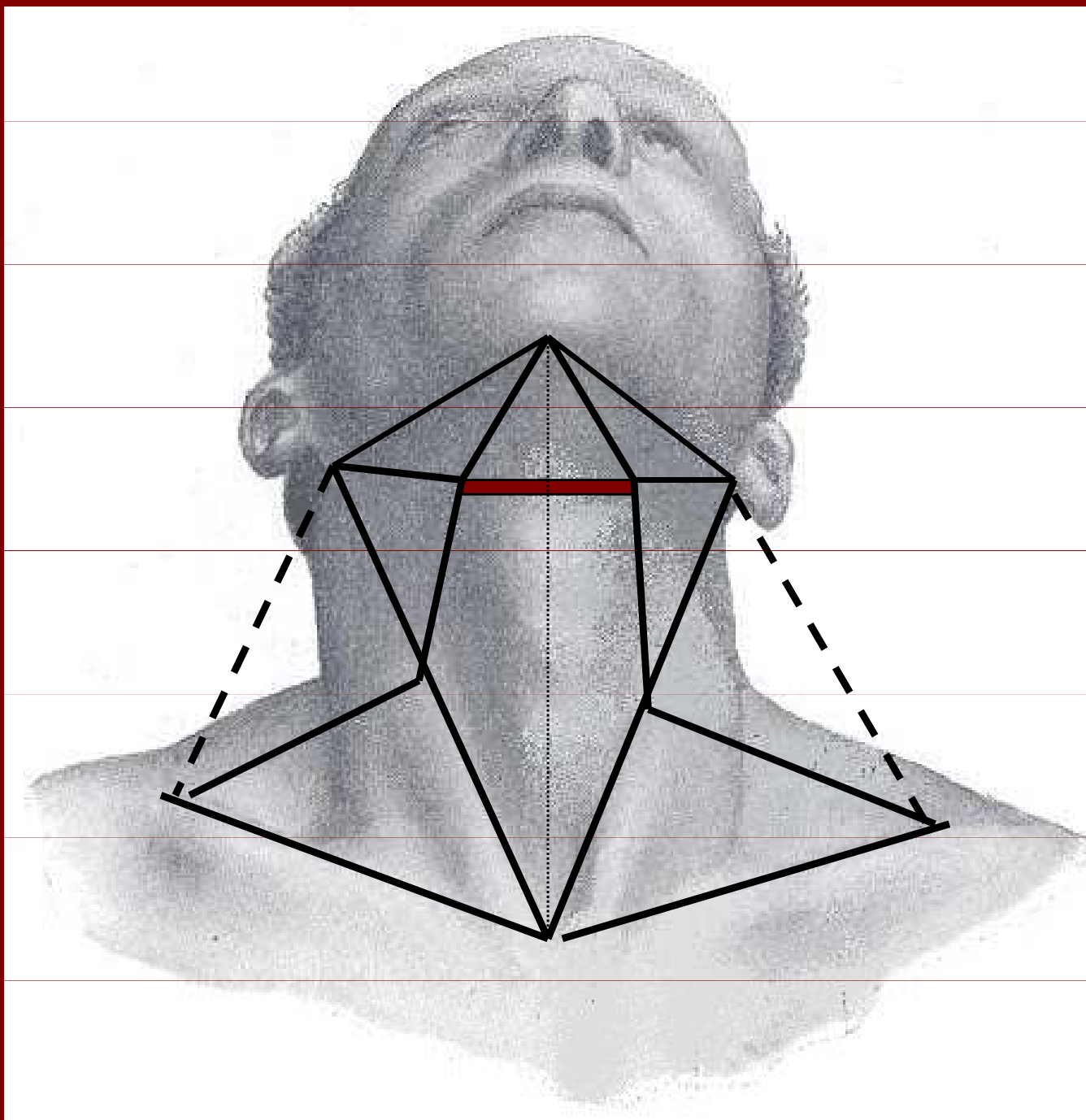
m.thyreochoideus

m.omohyoideus

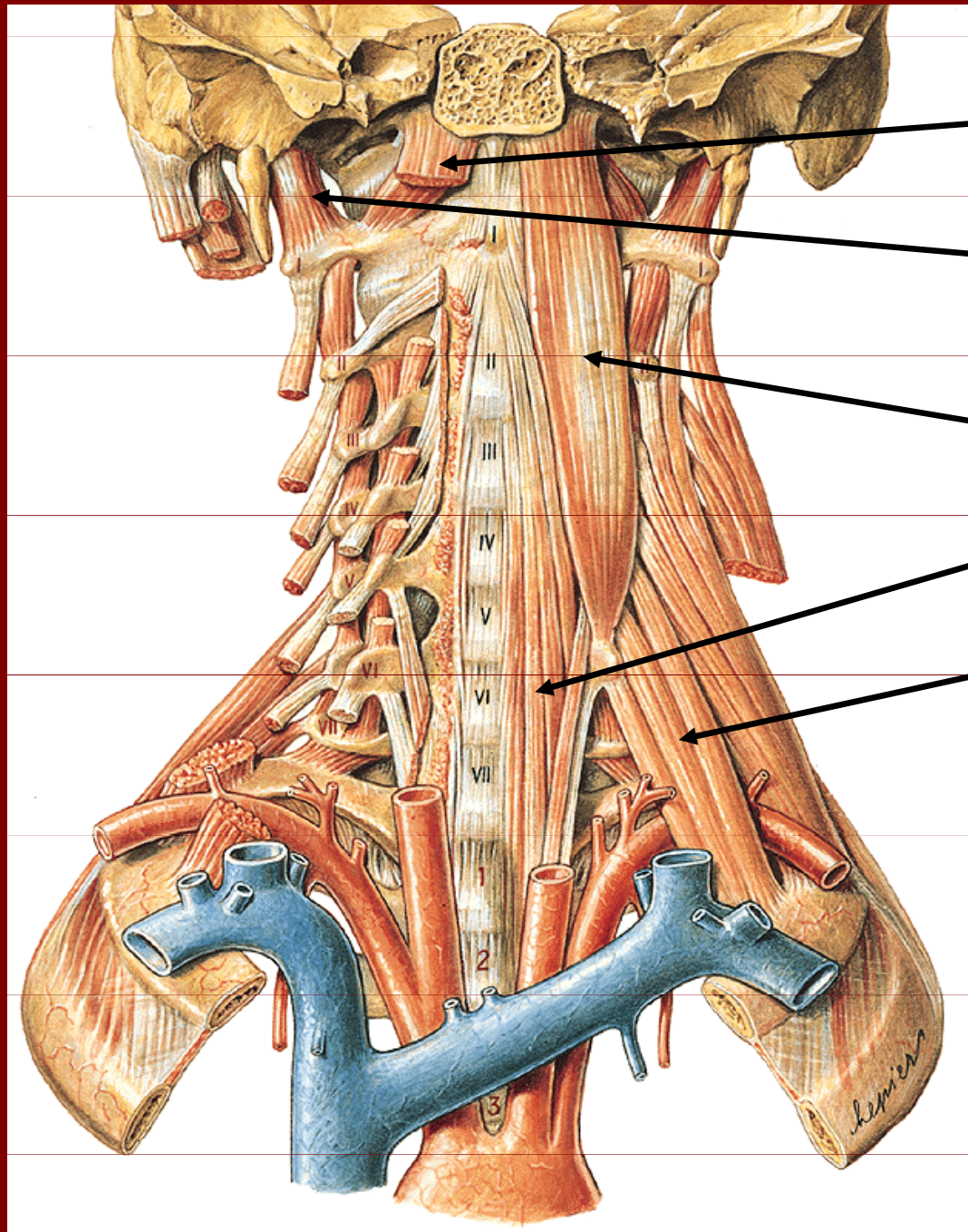
Svaly krku



Trojúhelníky na krku



Svaly krku – hluboká vrstva



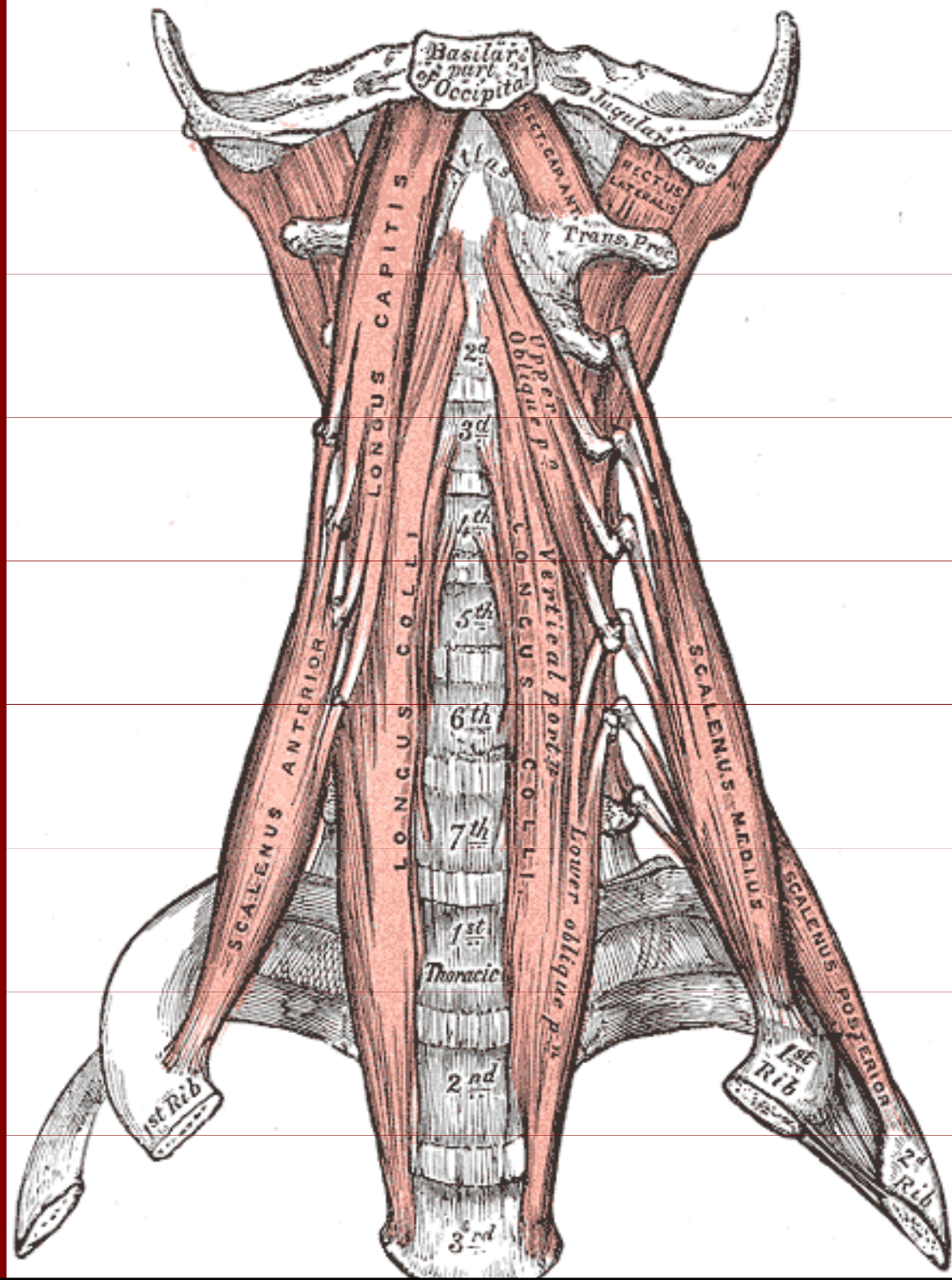
m.rectus capitis ant.

m.rectus capitis
lateralis

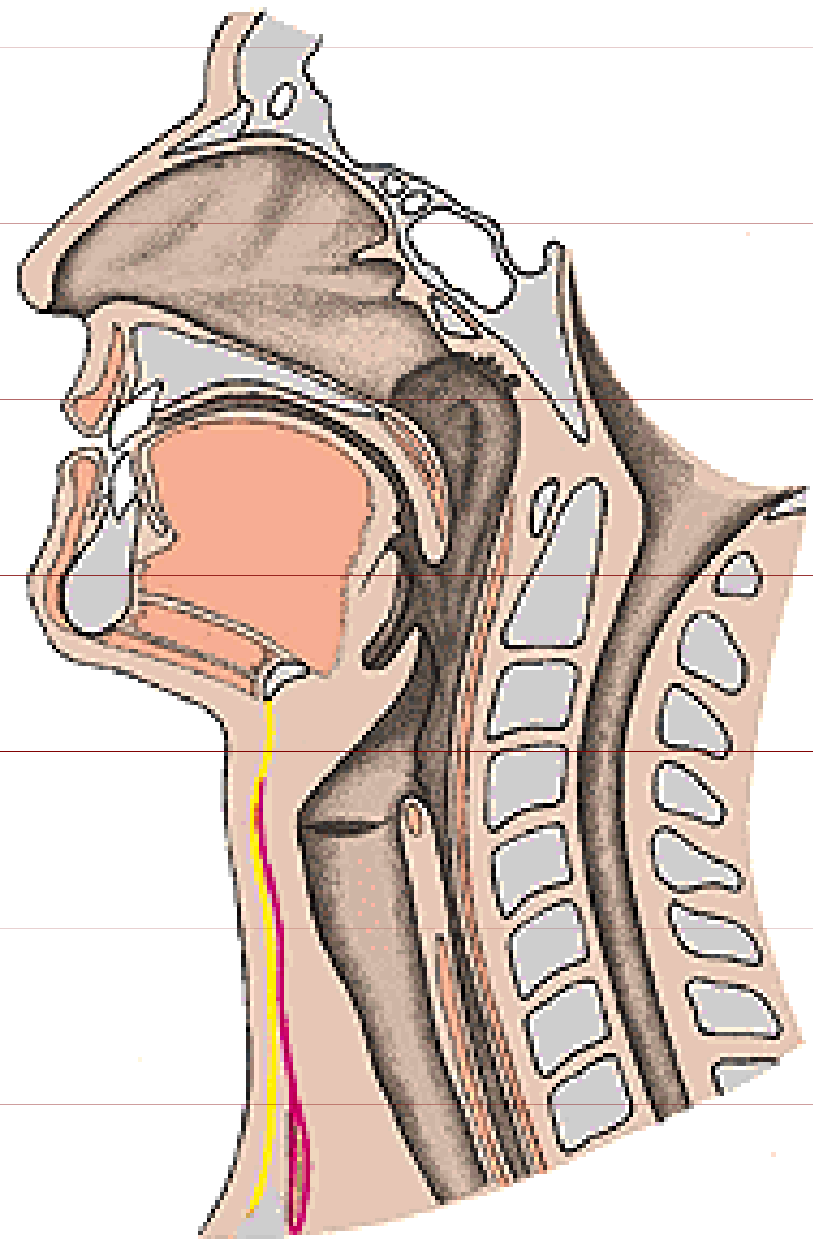
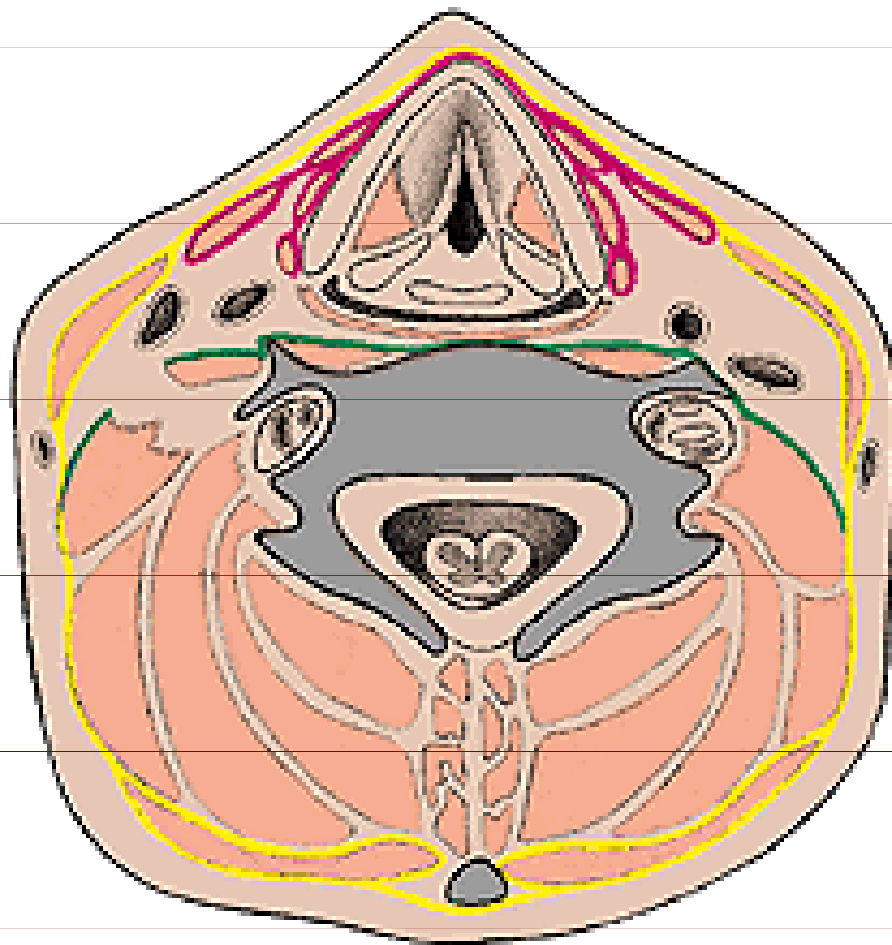
m.longus capitis

m.longus colli

mm.scaleni



Fascie krku



Poděkování

Pro tuto přednášku byly použity obrázky z
Atlas of Human Anatomy od Sobotty ,
z Gray's Anatomy a z
Anatomie 1 od Čiháka