

Class III. cavity preparation

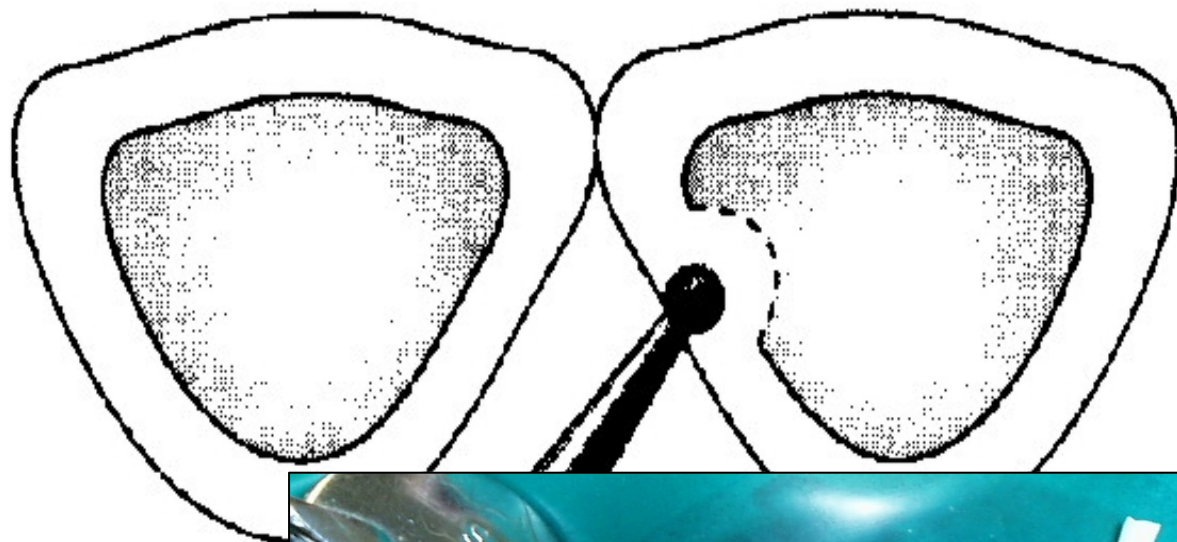
Proximal surface of frontal teeth (incisors and canines) without loss of incisal edge



Access to the cavity

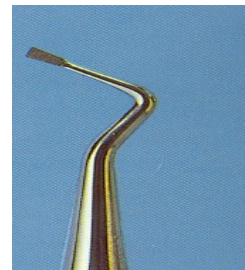


- **Through the enamel from the oral surface**
- **Removal of old filling**
- **Separation of teeth - wedges**
- **Removal of hyperplastic gingiva**



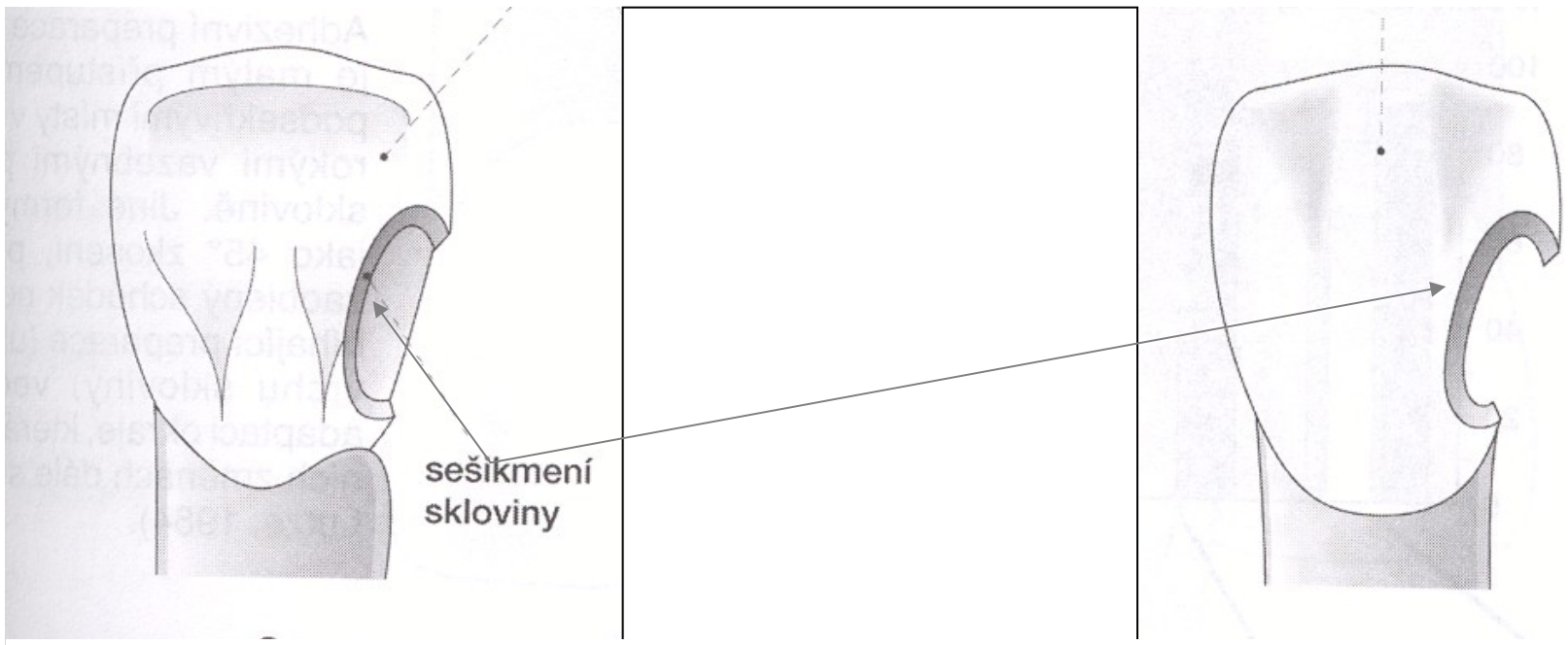
Cavity borders

- The size of the cavity depends on dental caries, do not extend!!!
- Excavation of carious dentin



Retention

- Retentive border for composites



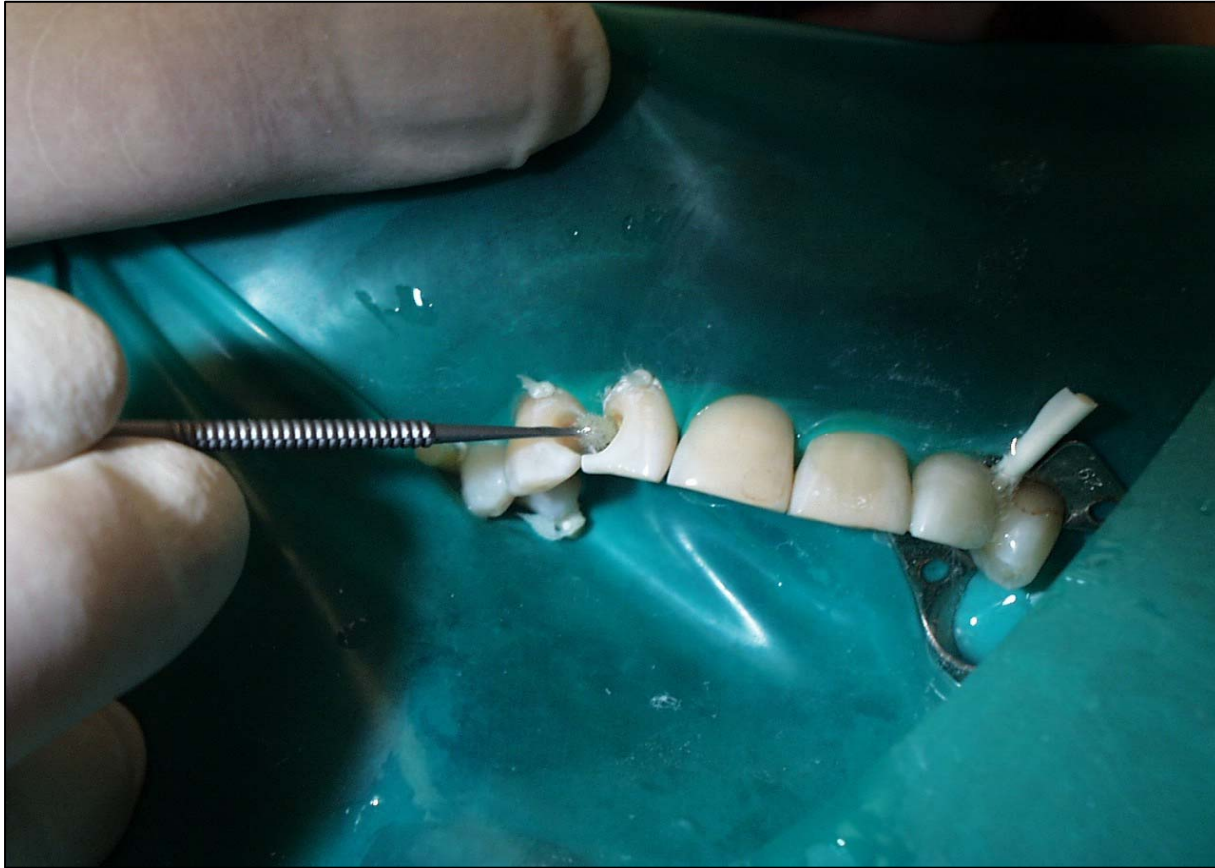
Dry field!!!!



Etching of enamel and dentin



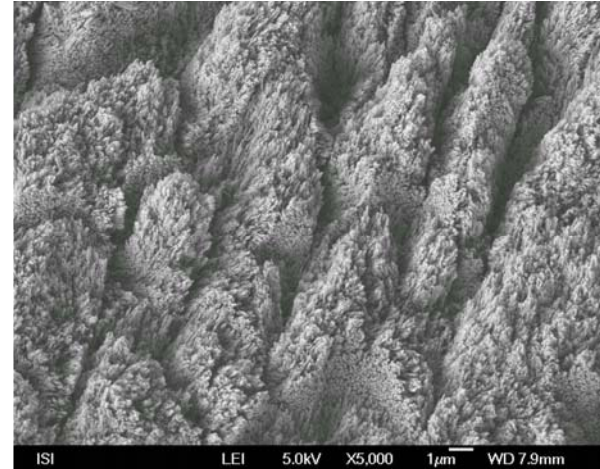
Bonding



Surface Morphology for Adhesion

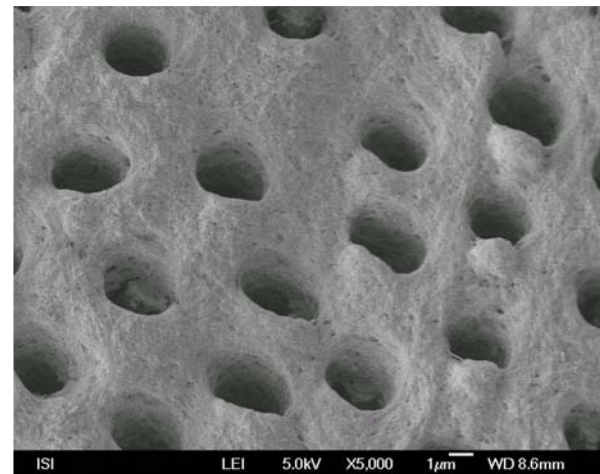
➤ Enamel

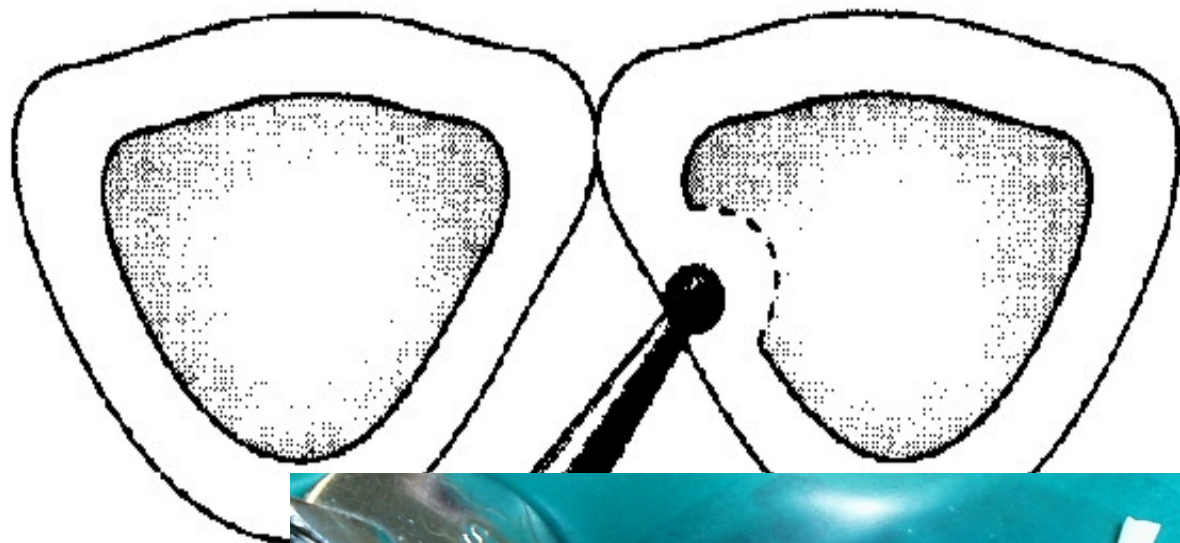
- regular surface with opened inter/intraprismatic spaces



➤ Dentin

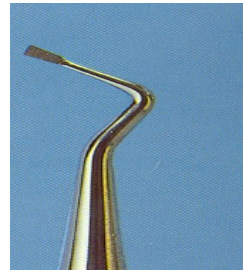
- no smear layer
- opened dentinal tubules
- collagen network available

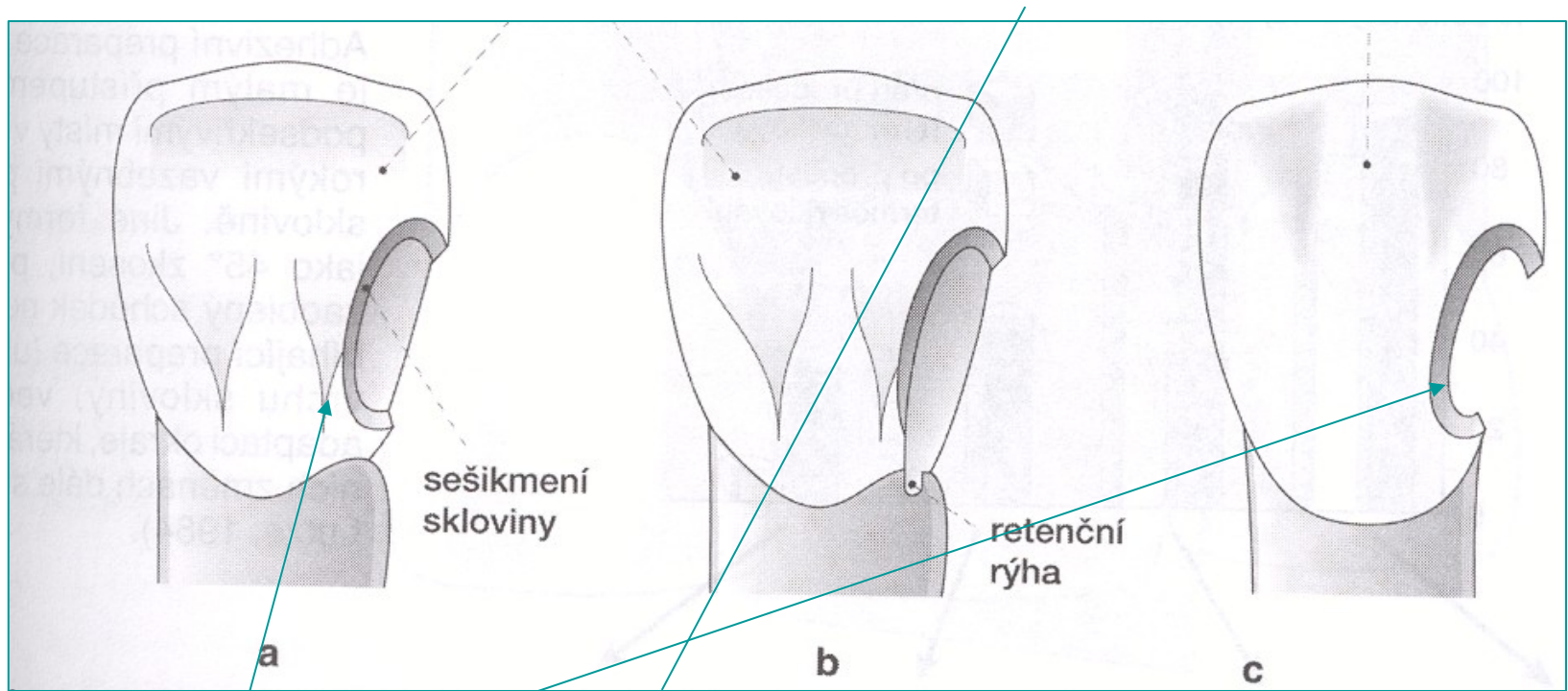




Outlines

- Depend on size of dental caries or old filling





Retentive border



Preparation of of borders

- Retentive border in enamel
- No retentive border in cementum

Control of cavities



Etching, rinsing, drying



Bonding



Cleaning of teeth



Cavity preparation



Etching



Matrix and wedge, bonding



Layering of composite



Layering of composite



Almost finished



Matrix has been removed



Finishing



Polishing



Finished filling



