

# Class III. cavity preparation

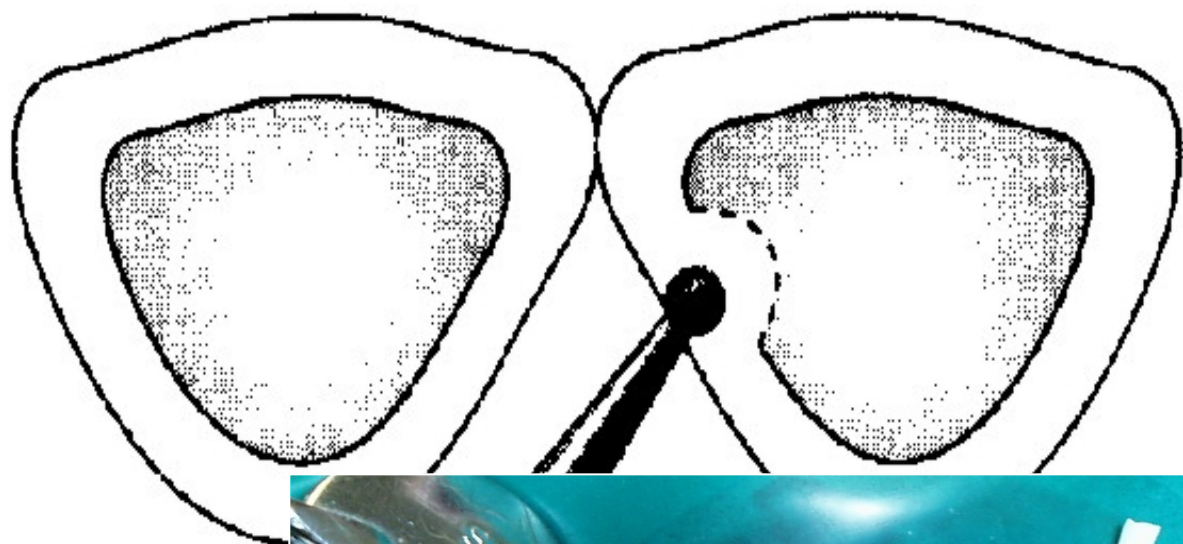
Proximal surface of frontal teeth (incisors and canines) without loss of incisal edge



# Access to the cavity

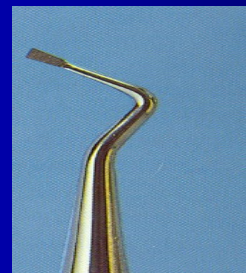


- **Through the enamel form the oral surface**
- **Removal of old filling**
- **Separation of teeth - wedges**
- **Removal of hyperplastic gingiva**



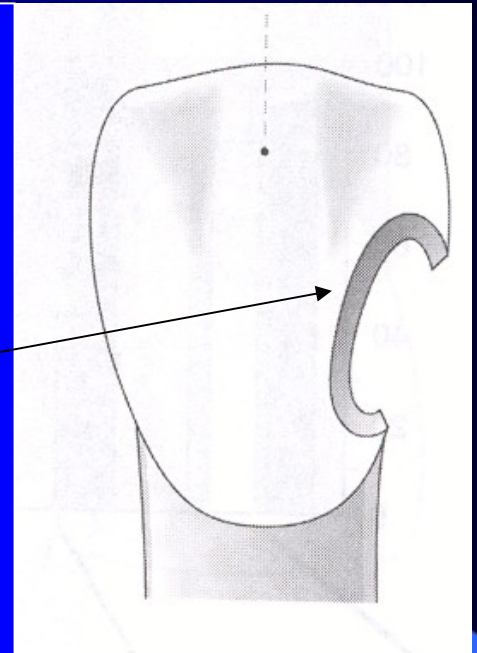
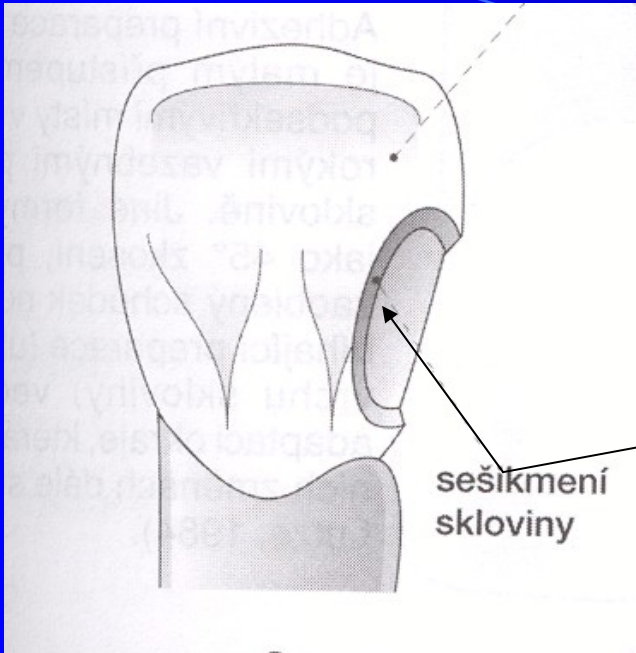
# Cavity borders

- The size of the cavity depends on dental caries, do not extend!!!
- Excavation of carious dentin



# Retention

- Retentive border for composites



**Dry field!!!!**



## Etching of enamel and dentin





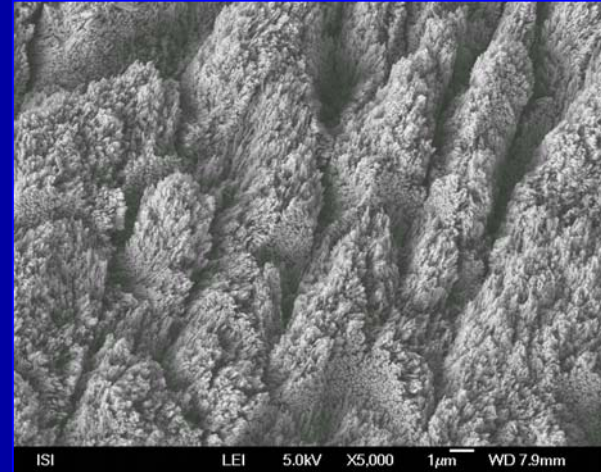
# Bonding



# Surface Morphology for Adhesion

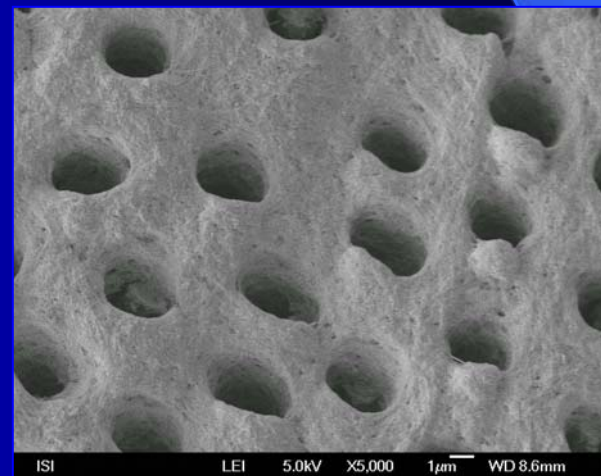
## ➤ Enamel

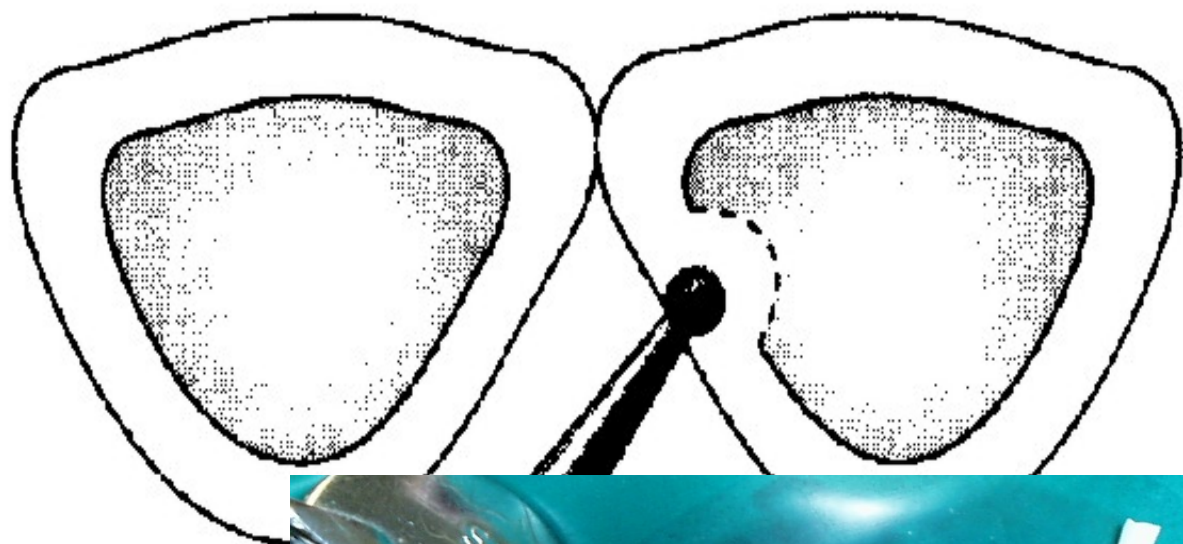
- regular surface with opened inter/intraprismatic spaces



## ➤ Dentin

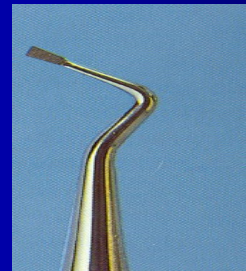
- no smear layer
- opened dentinal tubules
- collagen network available

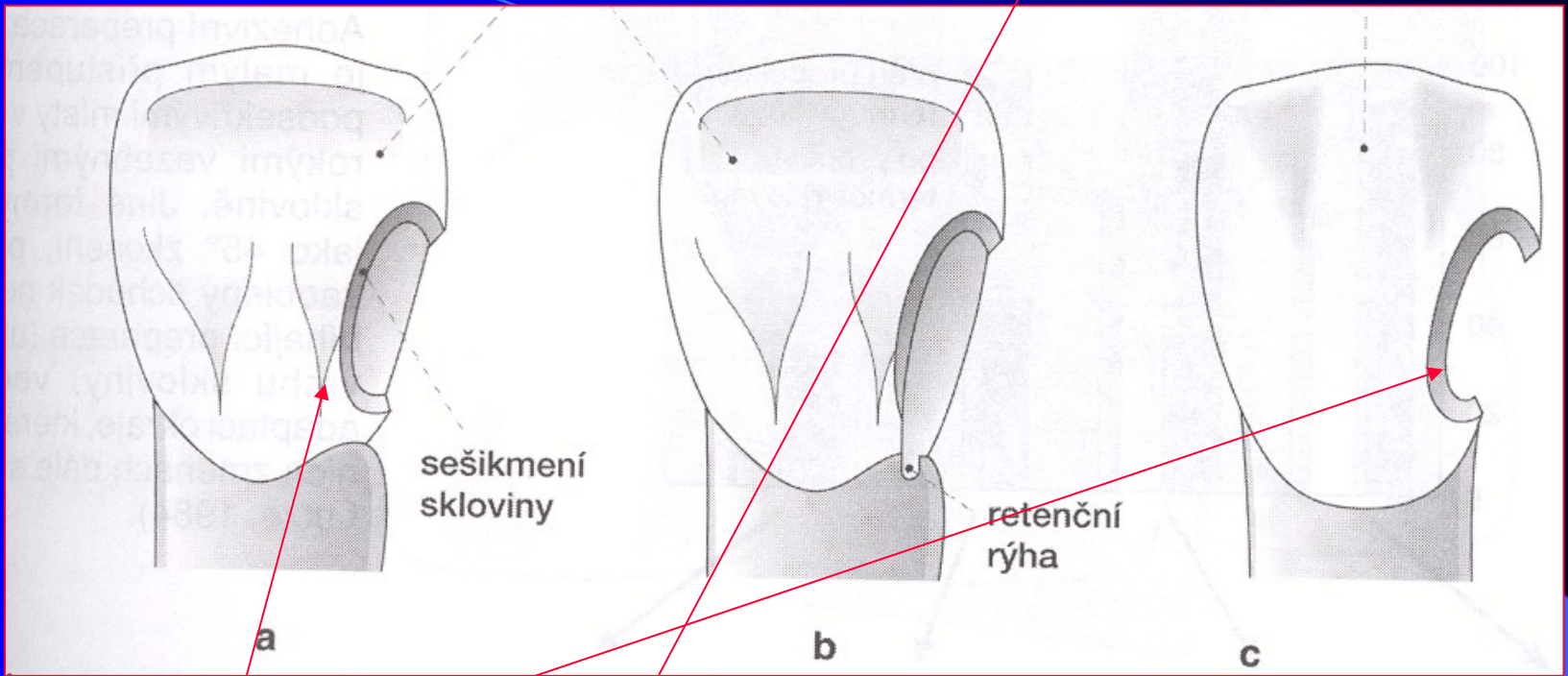




# Vytvoření obrysu kavity

- Kavitu preparujeme co nejmenší – v rozsahu kazivého ložiska nebo stávající výplně
- Nepreparujeme na rybinu – je to obsolentní – obětujeme tak mnoho zdravé tkáně!!!
- Odstranění kariézního dentinu





Retentive border



# Úprava sklovinných stěn a hran

- Retenční pruh – šikmení skloviny – nejčastějším materiálem je kompozit

# Toaleta a konečná kontrola kavity



**suché pole !!!**

## Leptání skloviny, oplachování a sušení





## Nanášení adheziva



# **Nanesení bondu, vrstvení kompozitu, jeho polymerace, opracování**

**-dia brousky**

-nízké otáčky

-chlazení

**-flexibilní disky**

-nízké otáčky, přerušovaná preparace

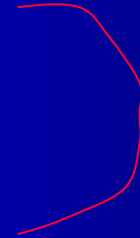
**-gumové leštící pomůcky různého tvaru**

-nízké otáčky, chlazení

**-speciální kartáče a platěné kotouče**

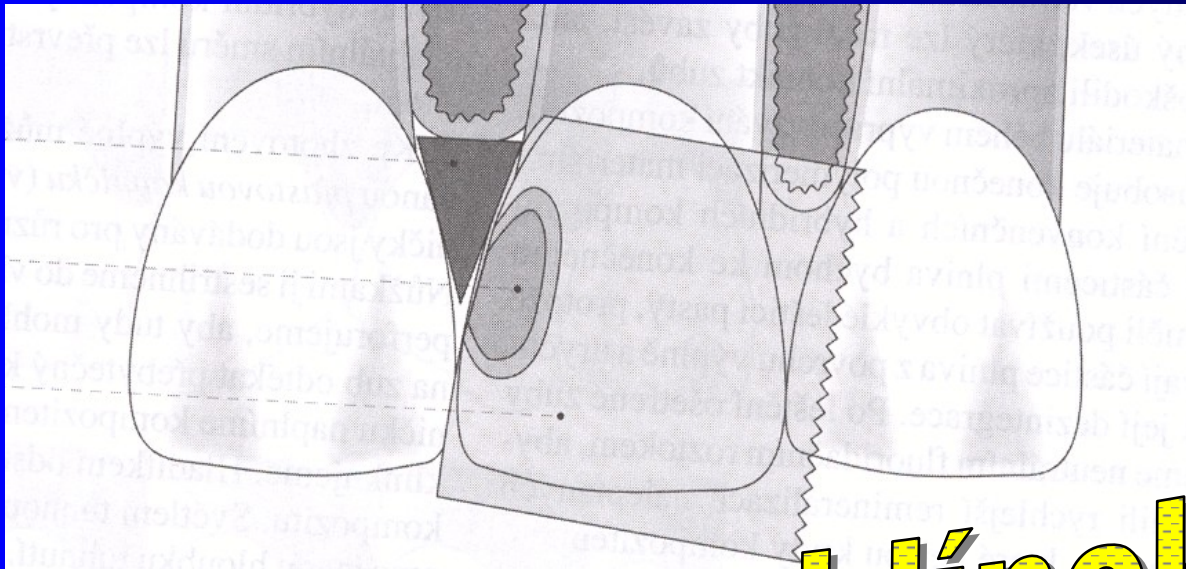
# Cleaning of teeth

# Preparation of the cavity



Etching

# Matrix and wedge



**matrice, klínek**

# Layering of composite







# Removing of matrix

**Finishing**

The background is a solid blue color with a subtle gradient. A thin, light blue curved line starts from the top left and arcs towards the right. On the right side, there is a light blue, semi-transparent shape that looks like a stylized arrow or a decorative element pointing towards the right edge.

**Polishing**

# Finished filling



