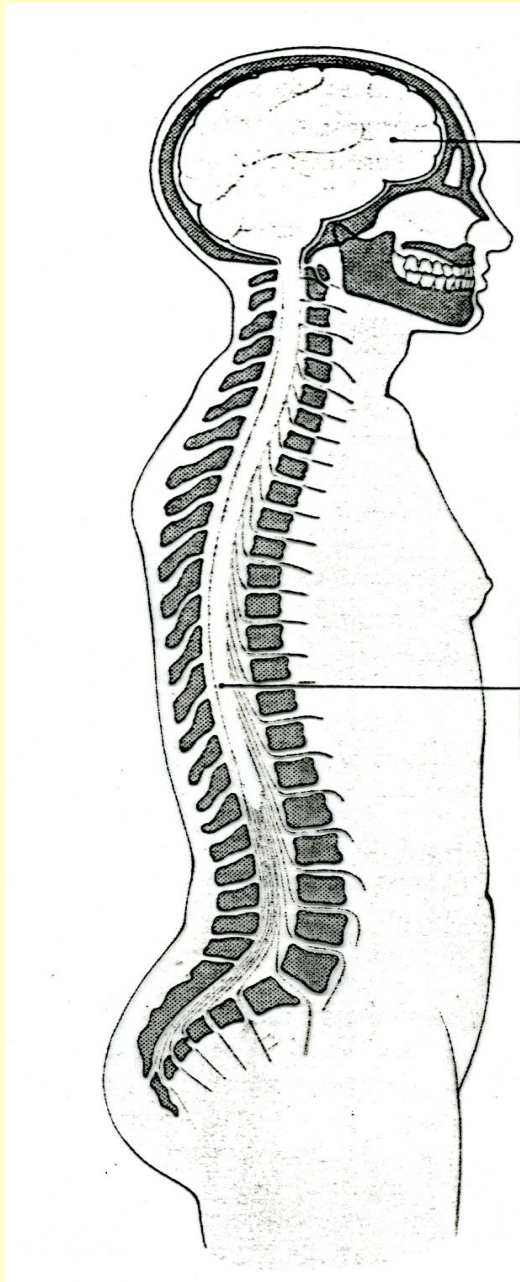


NEURON



Mozek

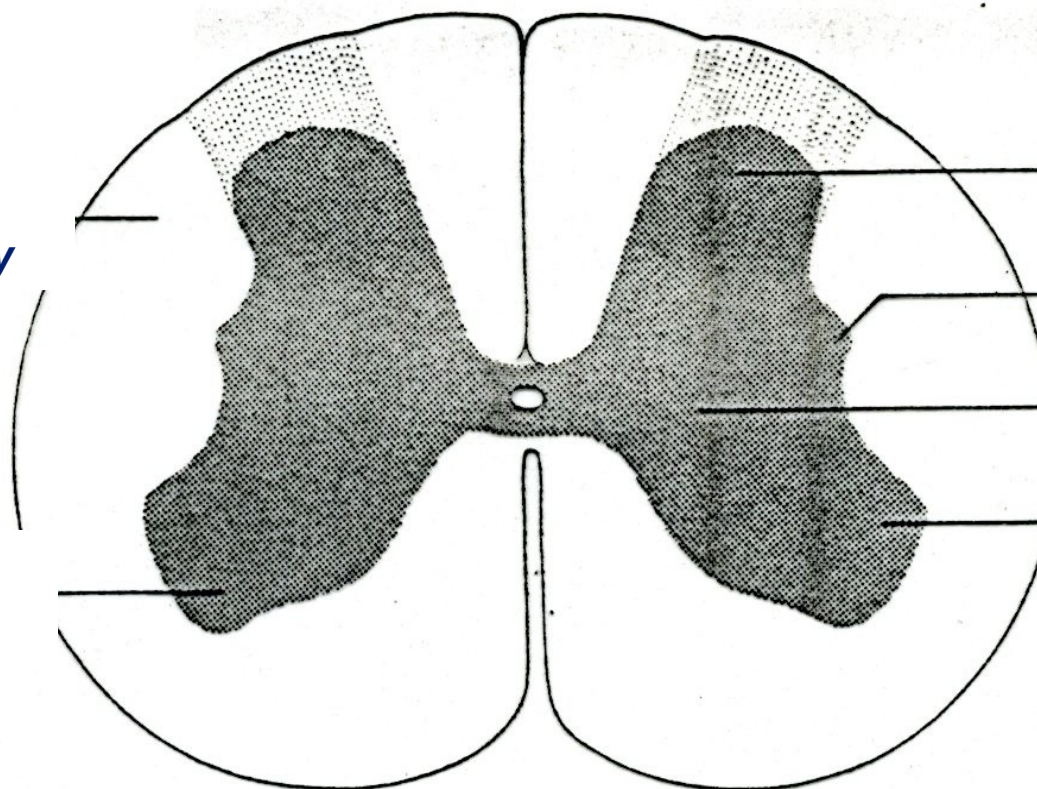
Spinální mícha

CNS

zadní část - dorzální

**bílá hmota
vzestupné
a sestupné dráhy**

**šedá hmota
neurony**



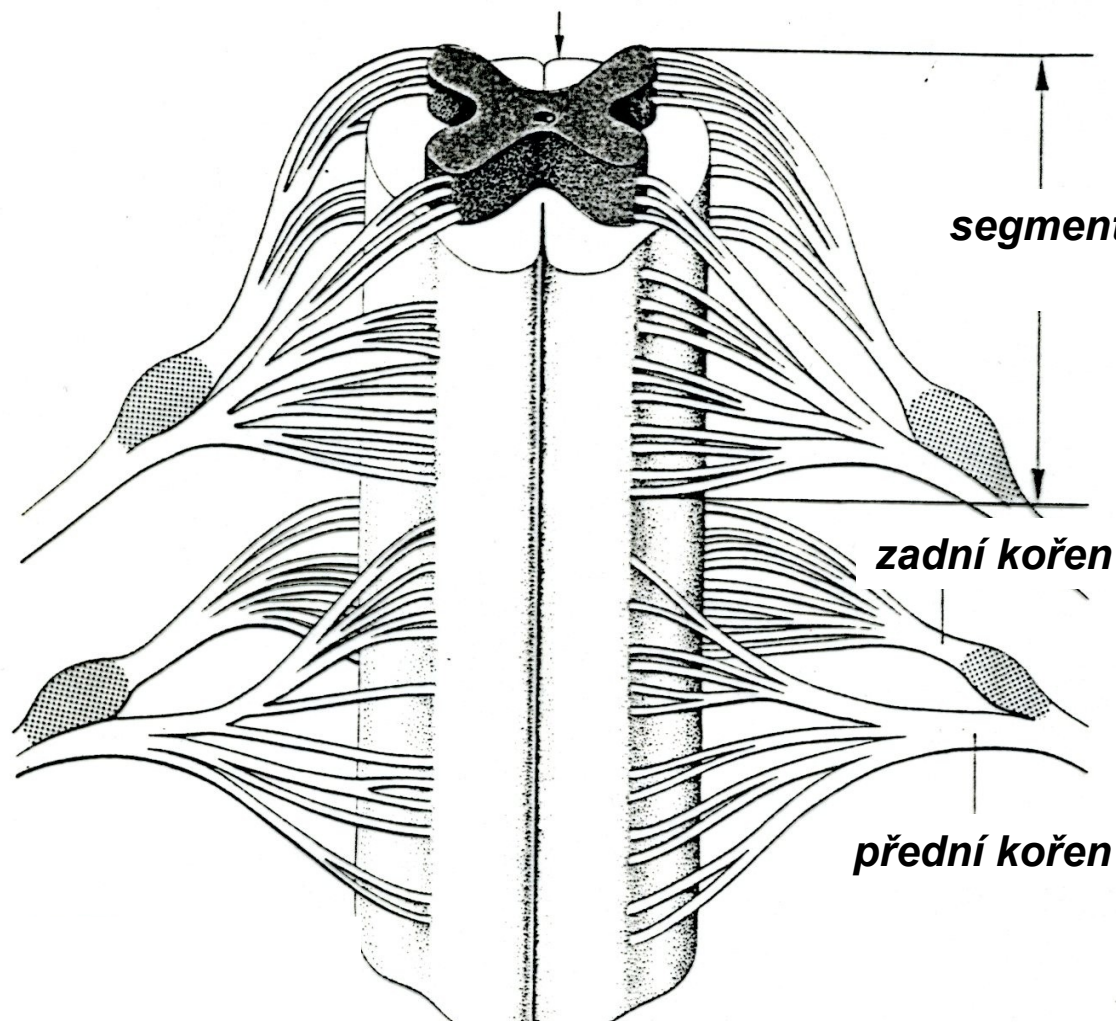
zadní roh

boční roh

oblast mezirohy

přední roh

přední část - ventrální

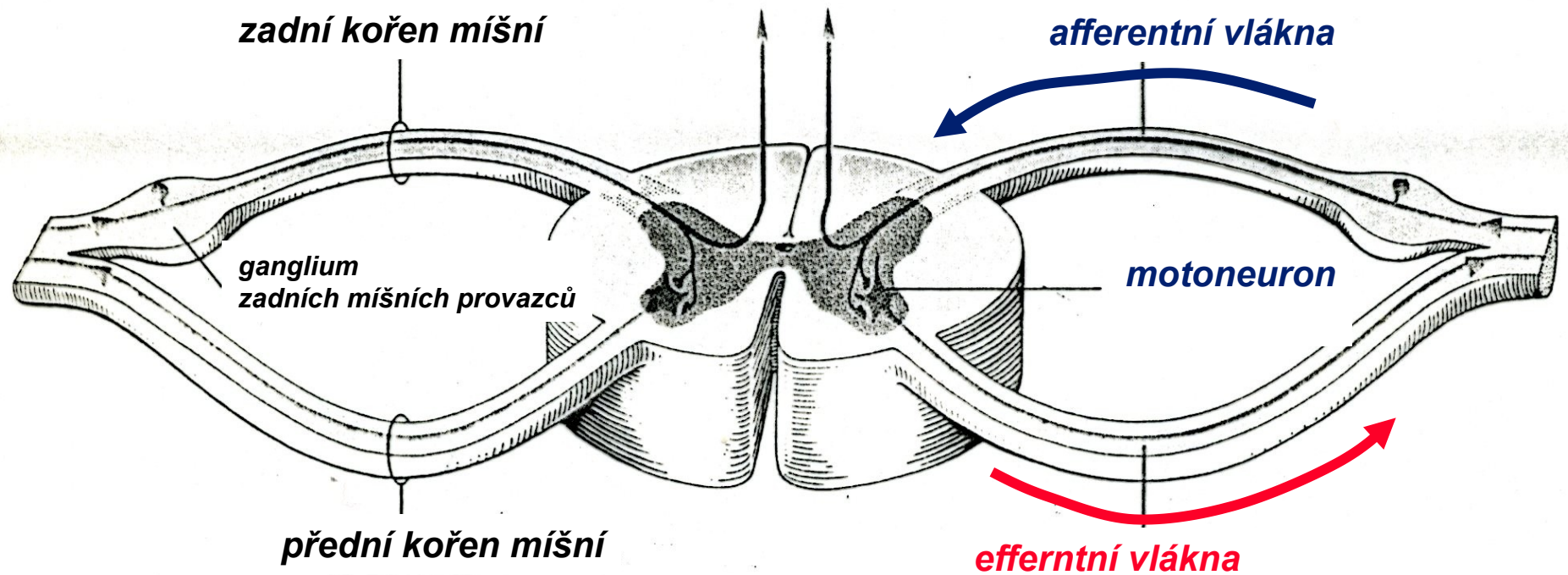


segment spinální míchy

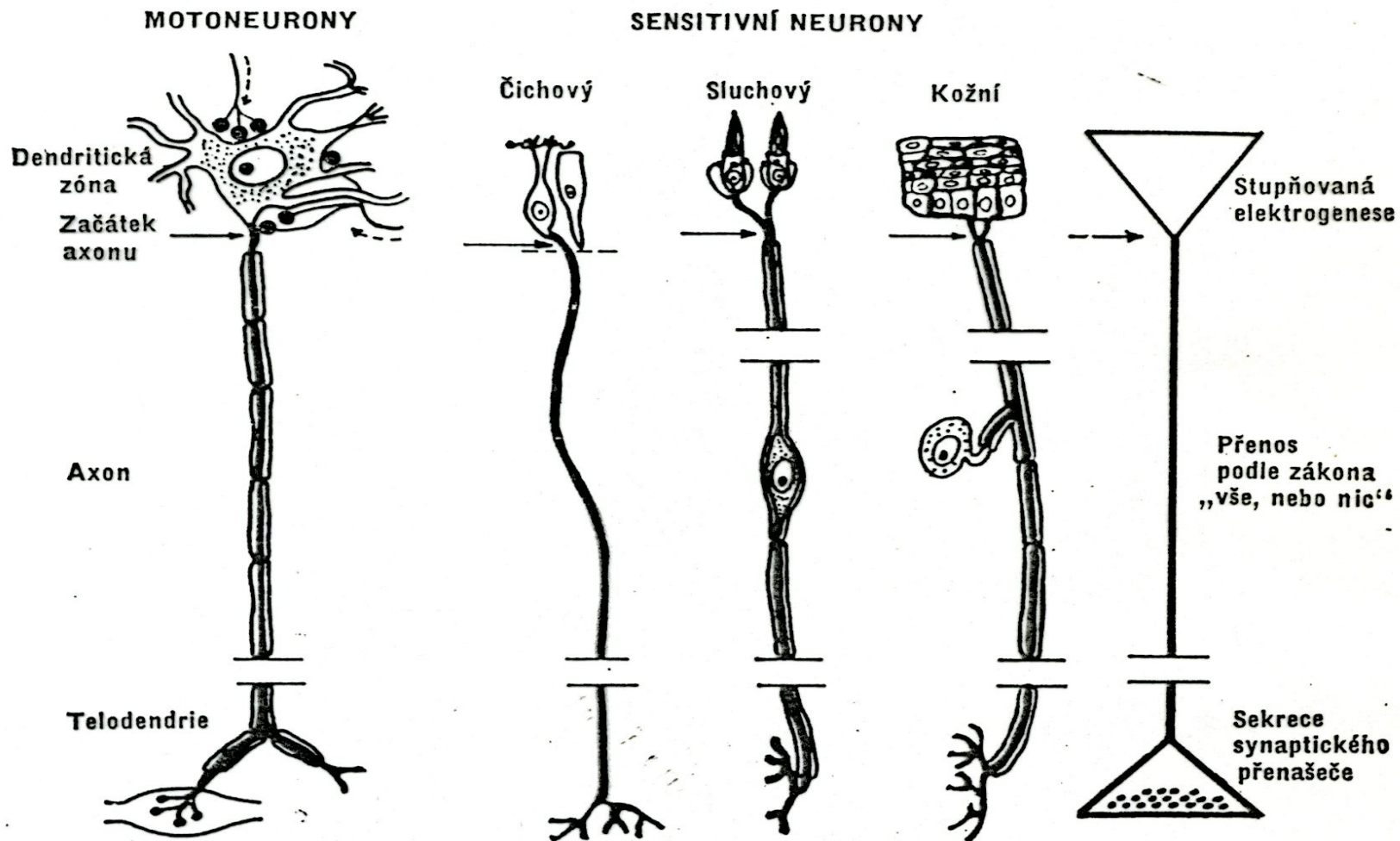
zadní kořen

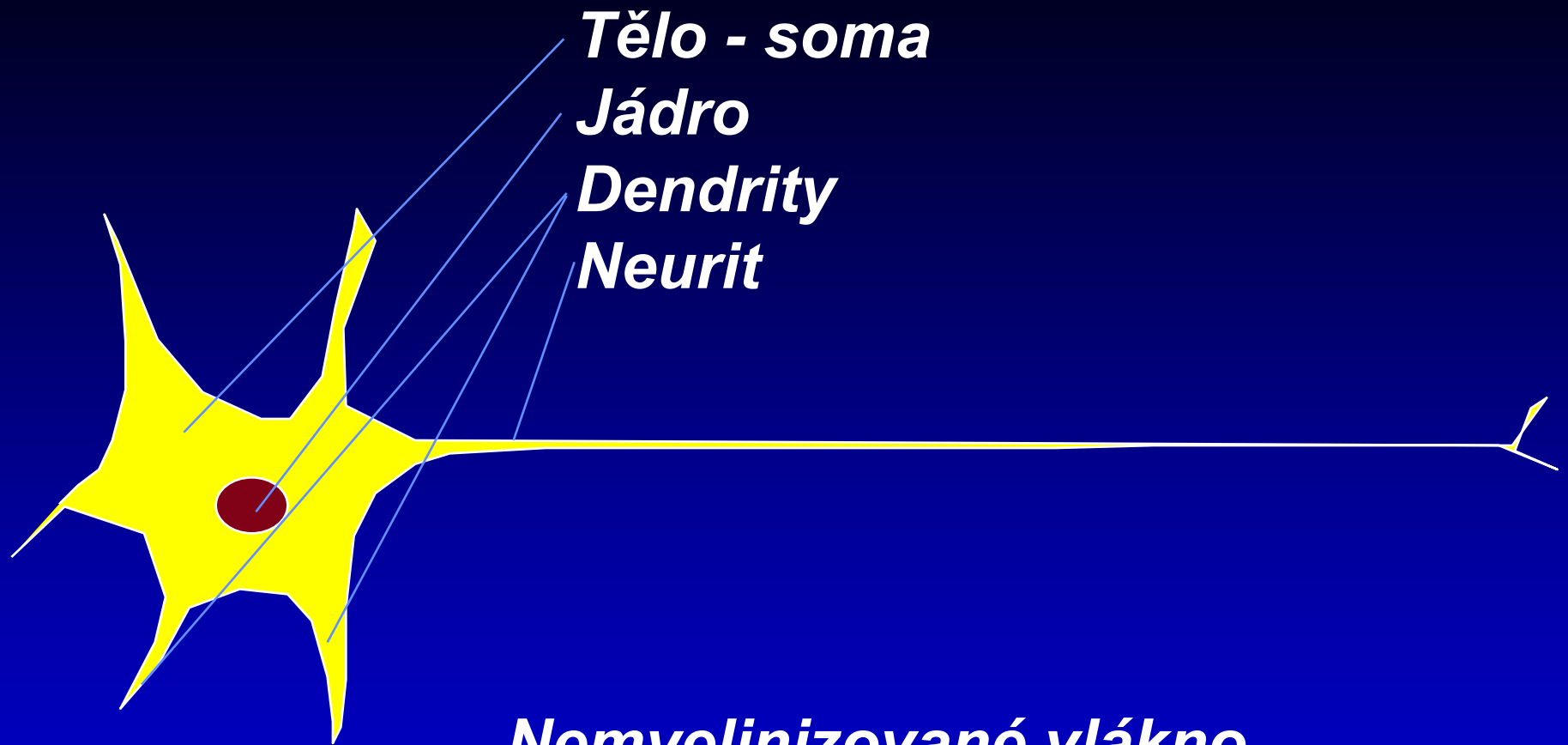
přední kořen

ventrální část



Funkční úseky neuronu





Tělo - soma

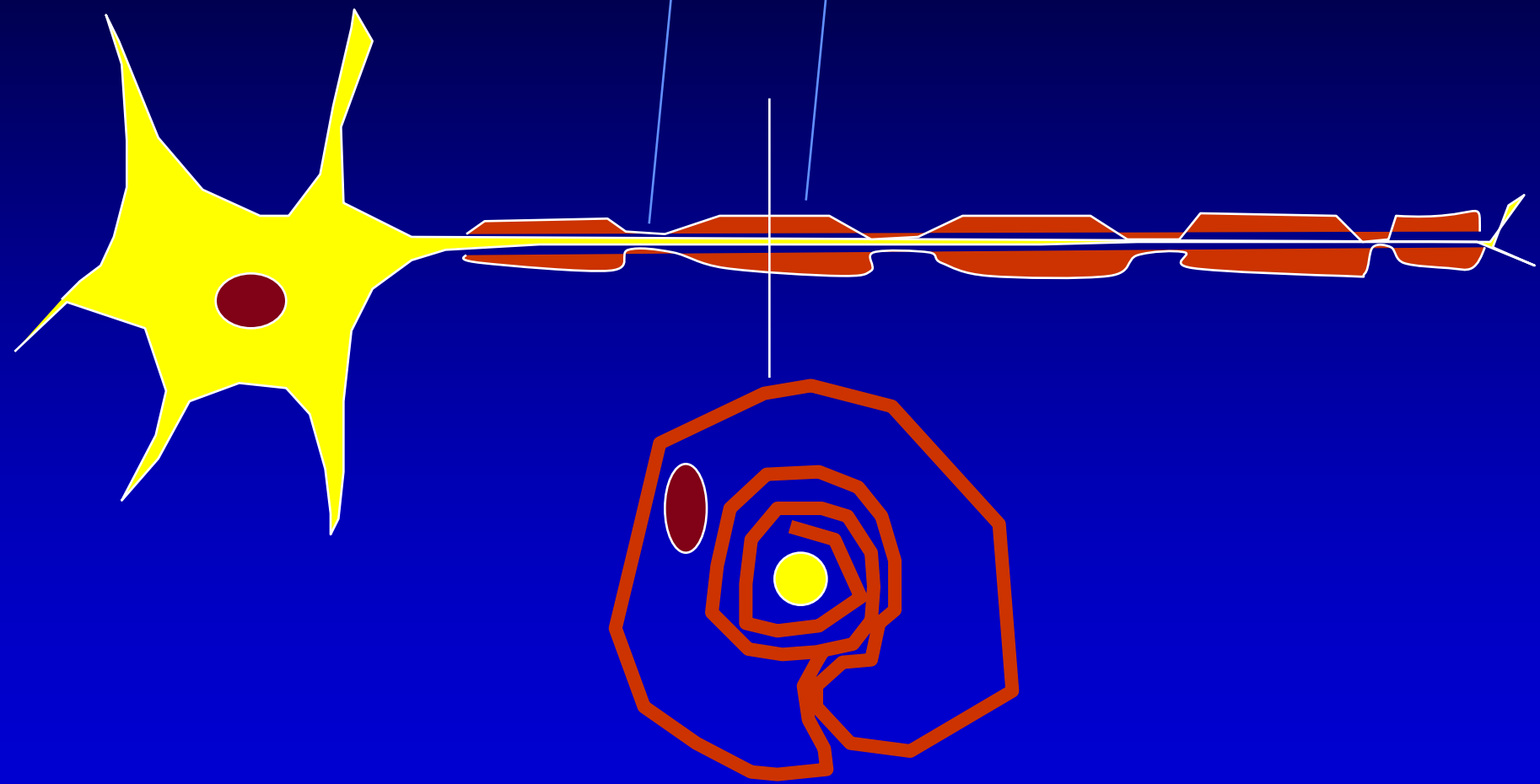
Jádro

Dendrity

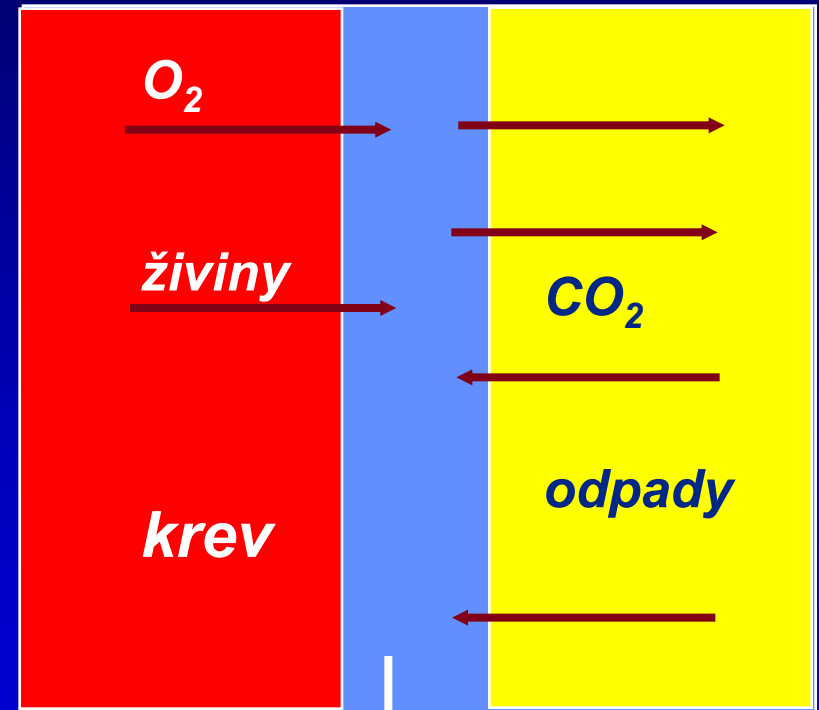
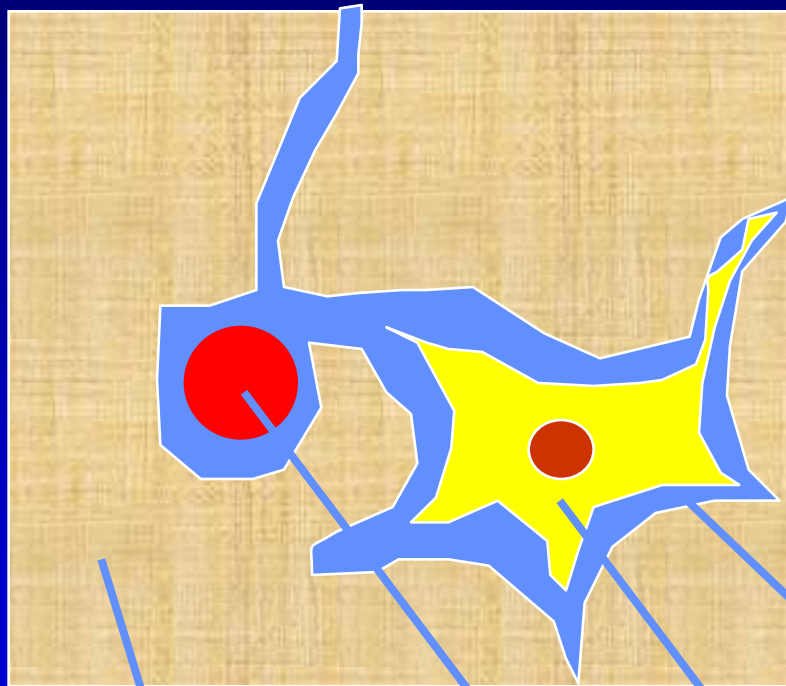
Neurit

***Nemyelinizované vlákno
(velmi dobrá regenerace)***

Ranvierův zářez
Schwanova buňka

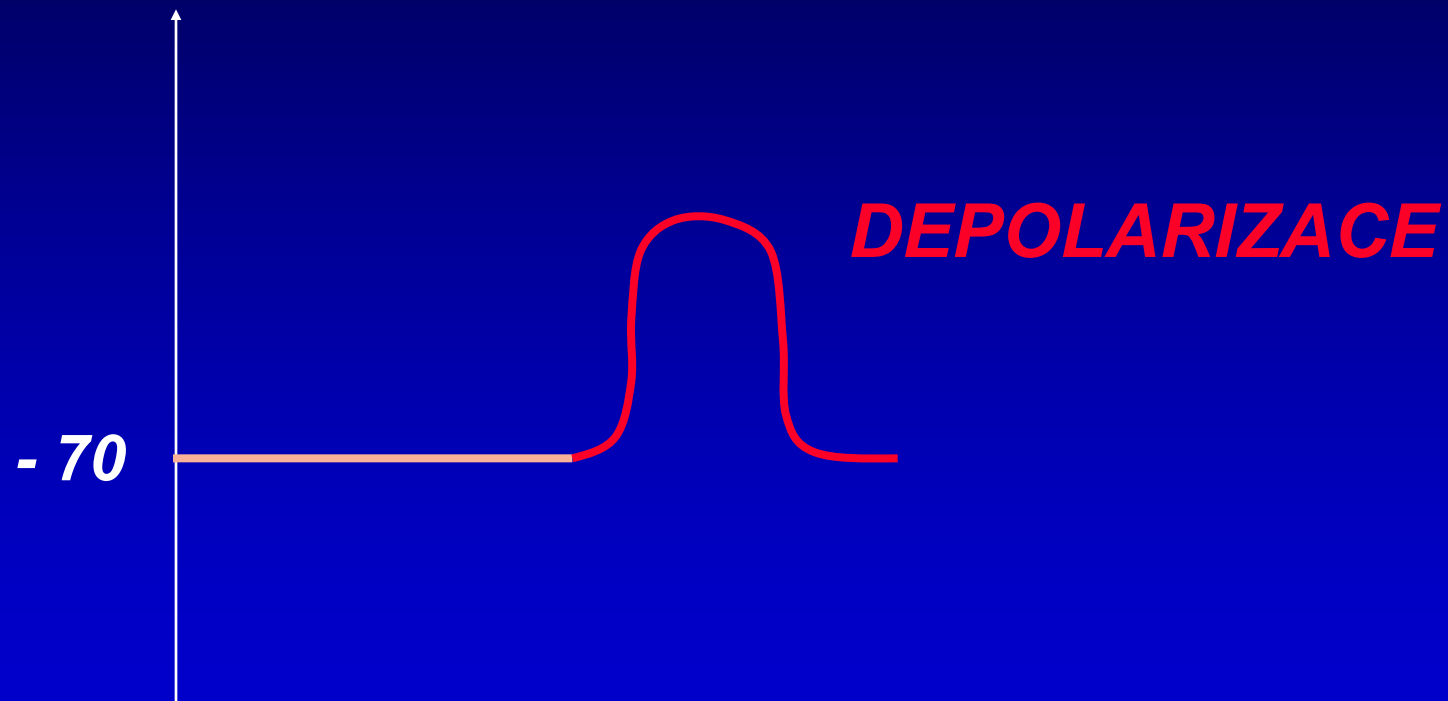


Vztah mezi neuronem, kapilárou, gliovou buňkou a extracelulárním prostorem

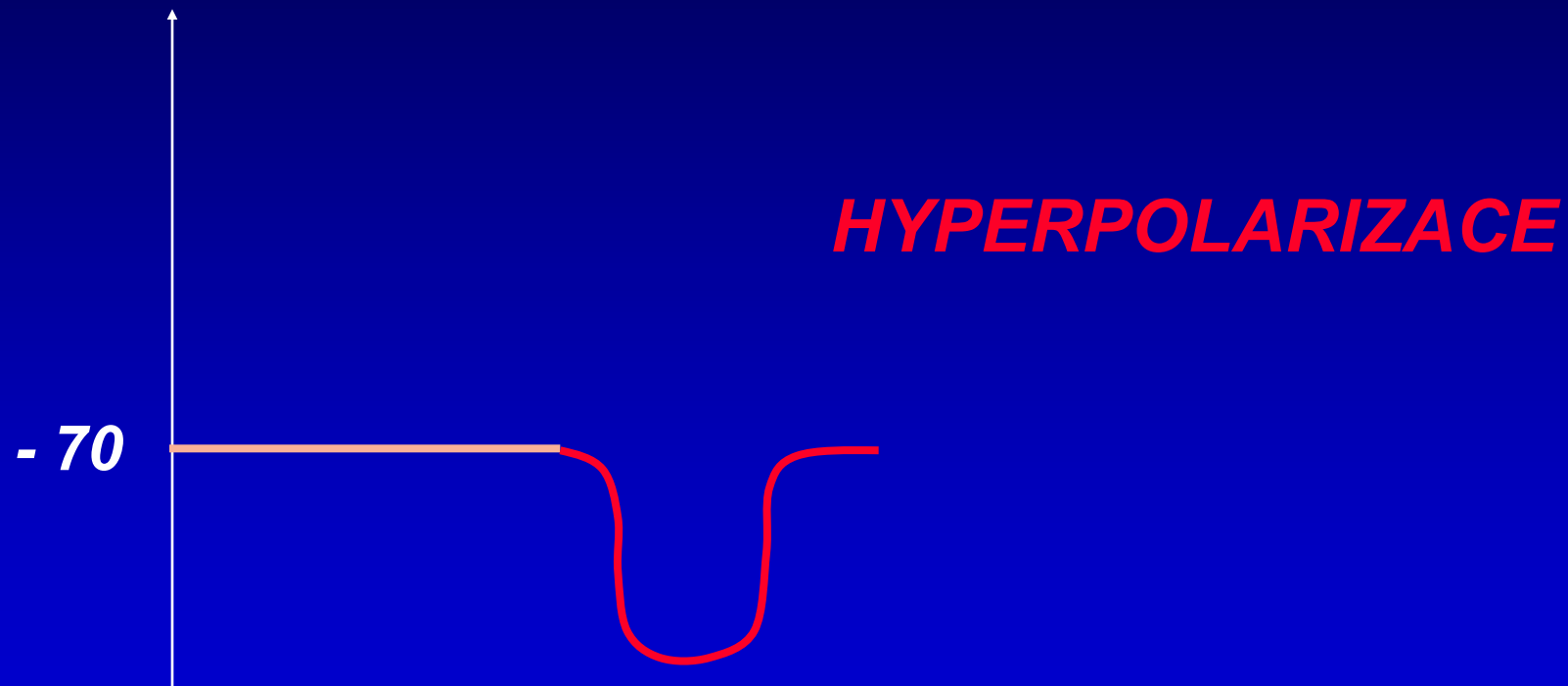


gliová buňka kapilára neuron extracelulární prostor

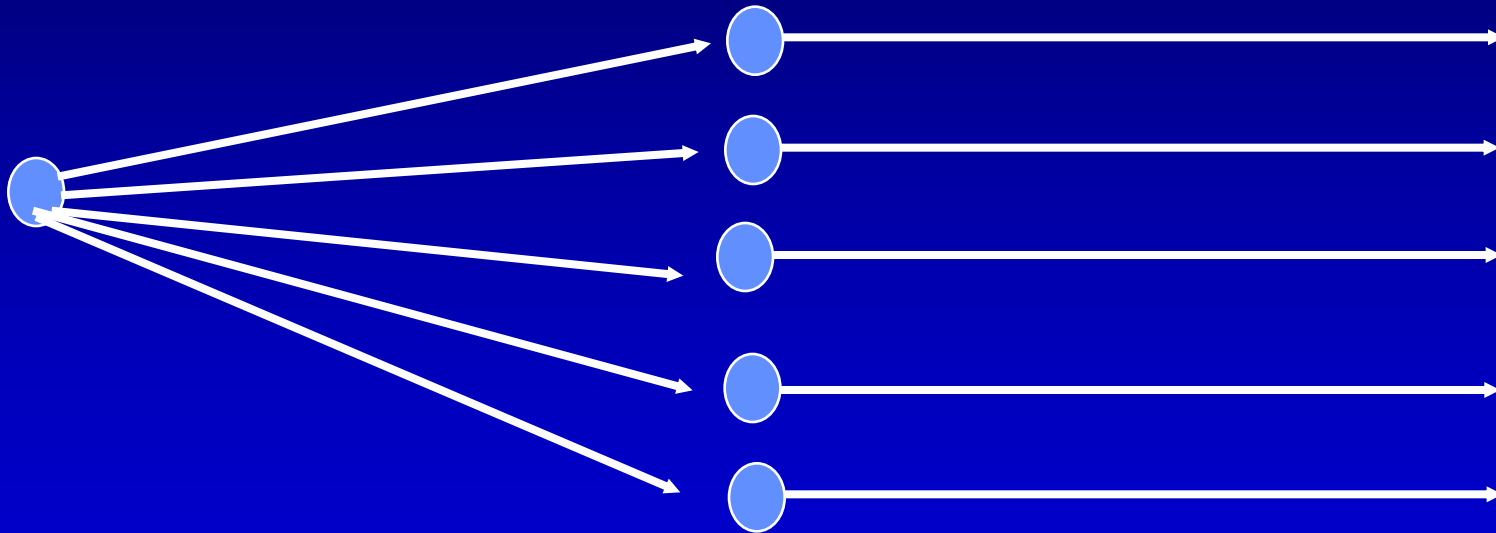
Excitační postsynaptický potenciál EPSP



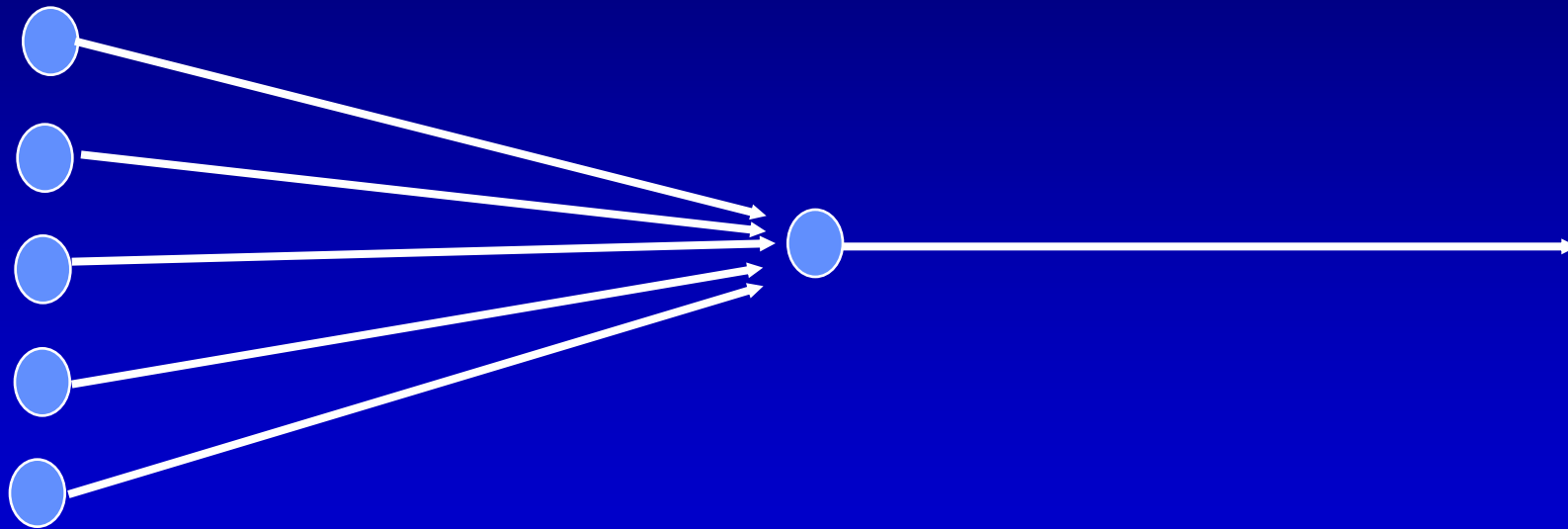
Inhibiční postsynaptický potenciál IPSP



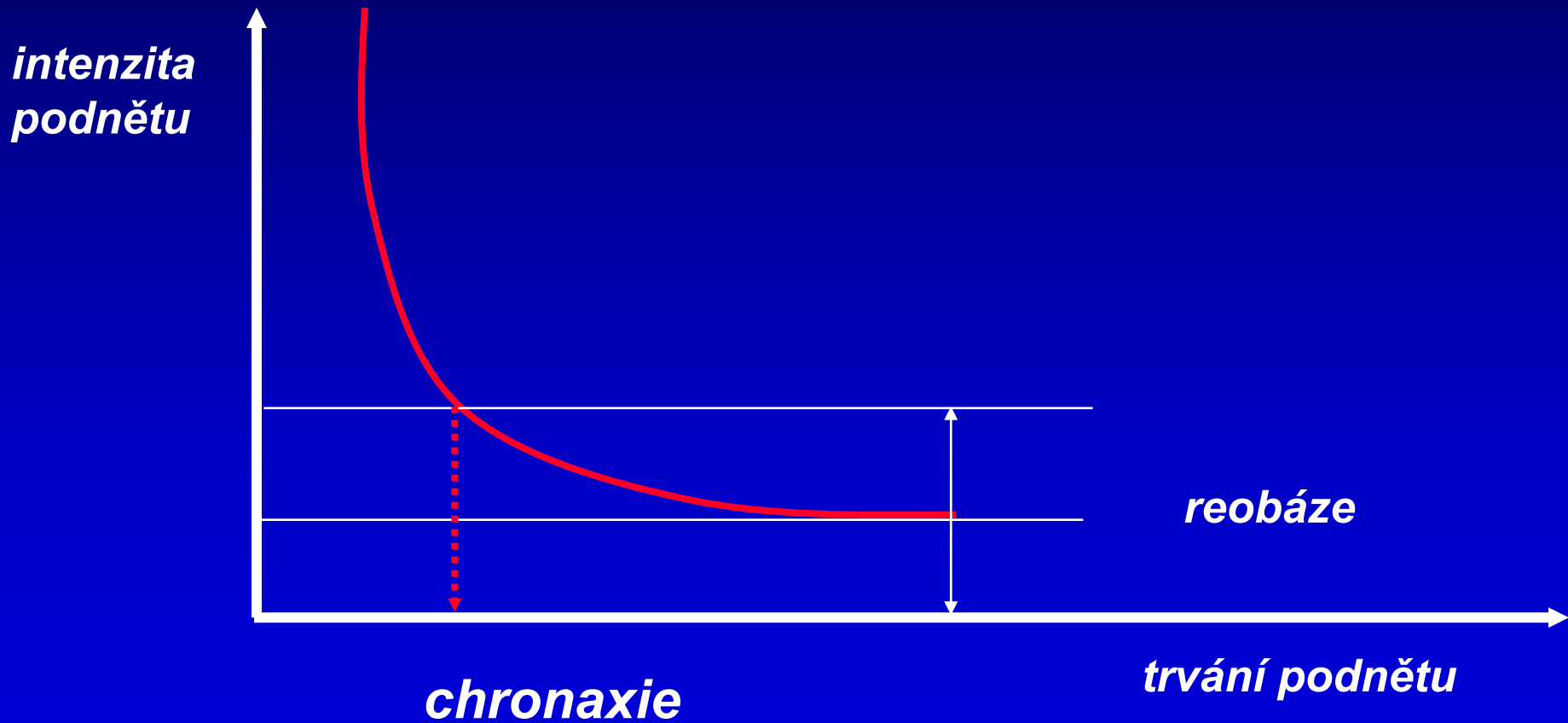
Princip divergence



Princip konvergence

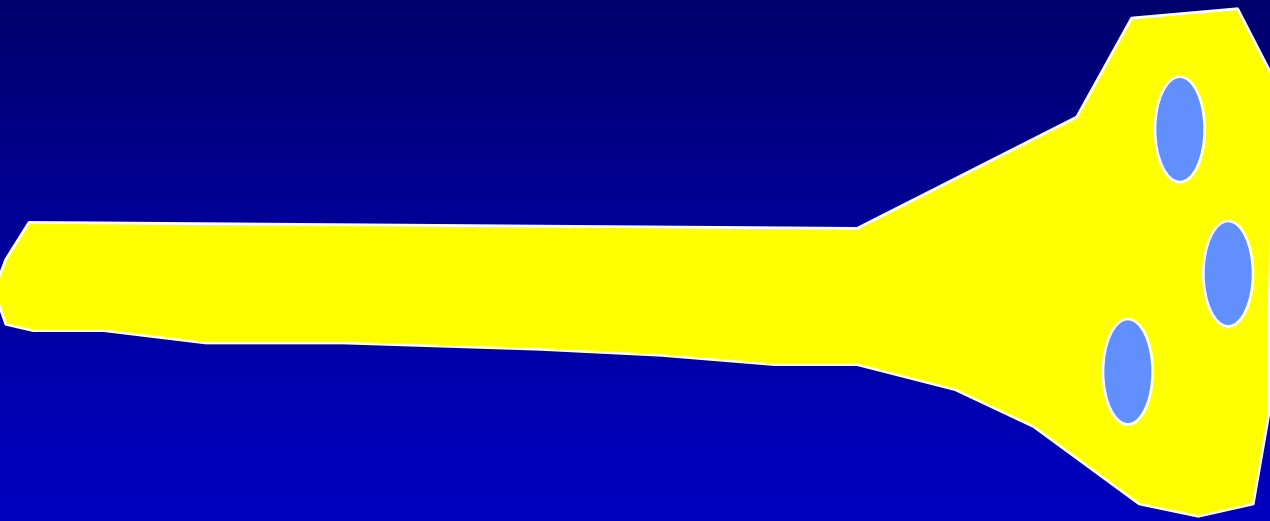


PODNĚT a INTENZITA

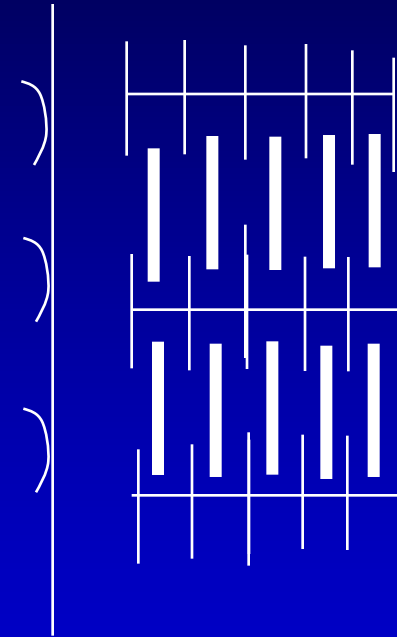


SYNAPSE

SYNAPSE

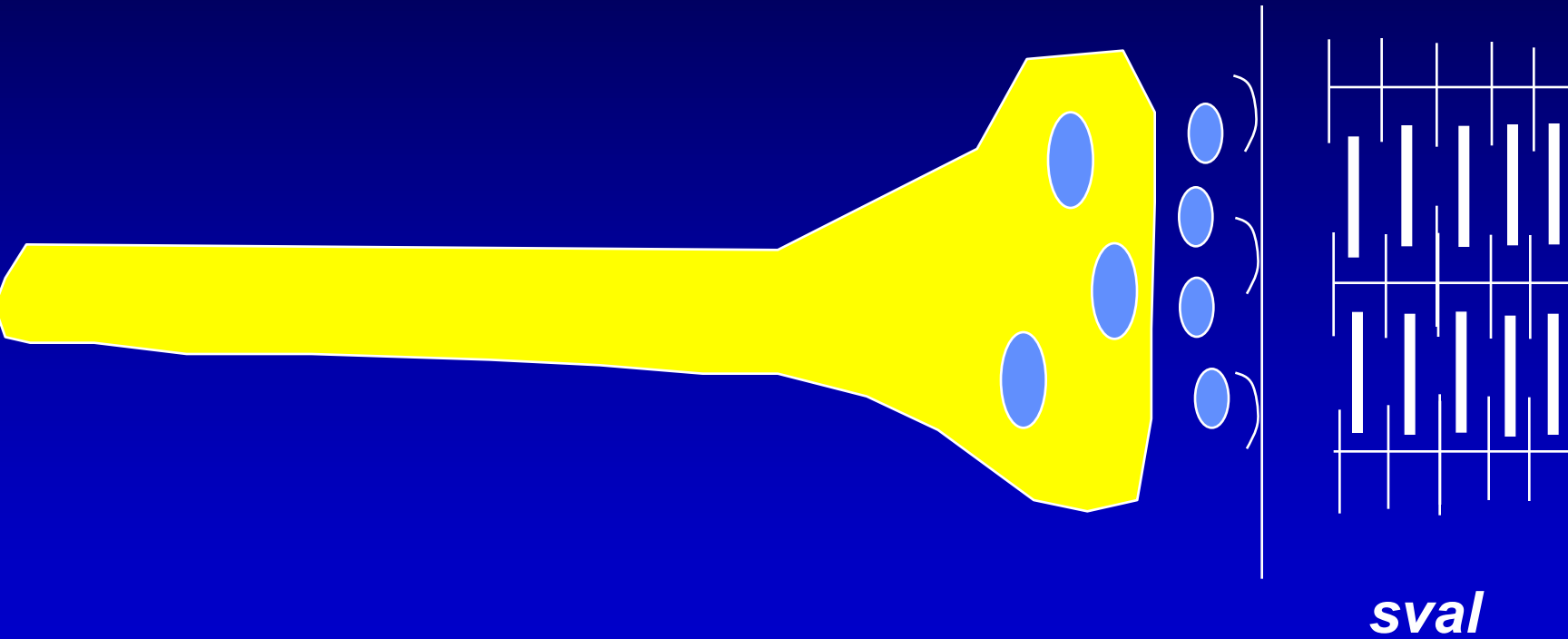


acetylcholin

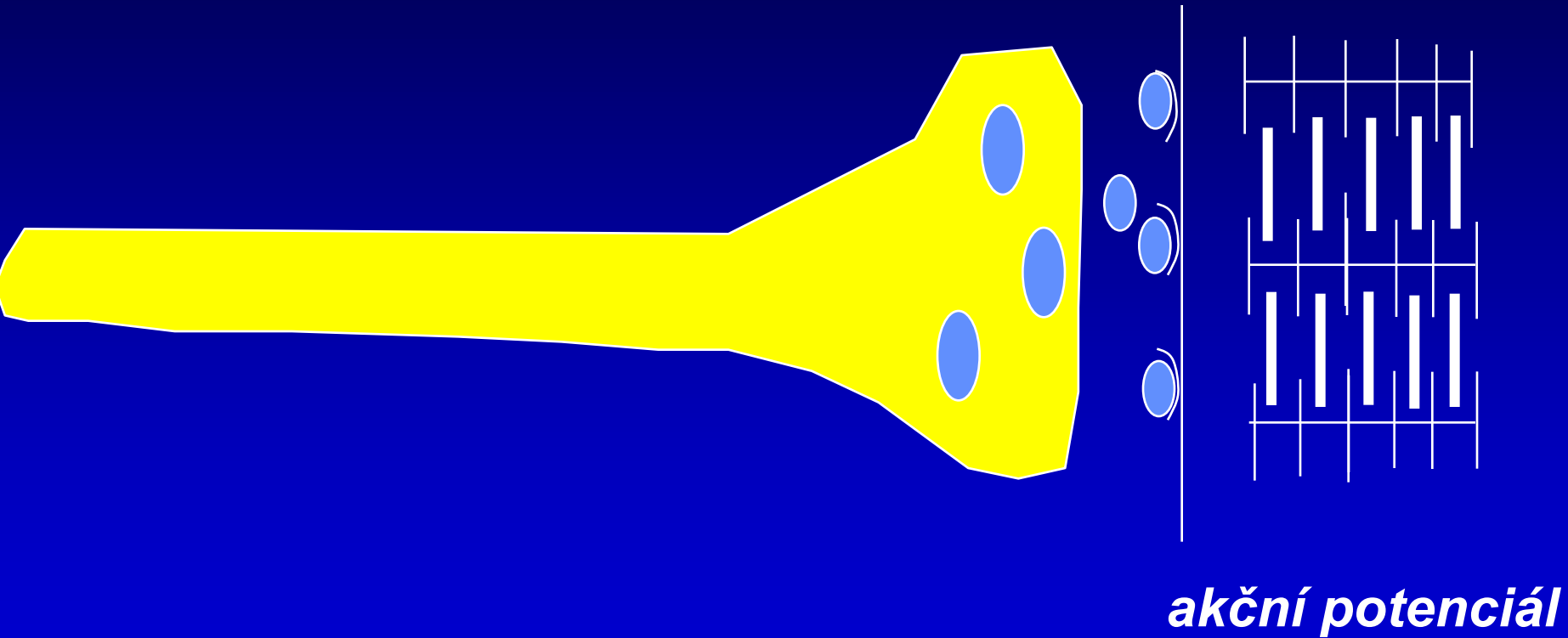


receptor

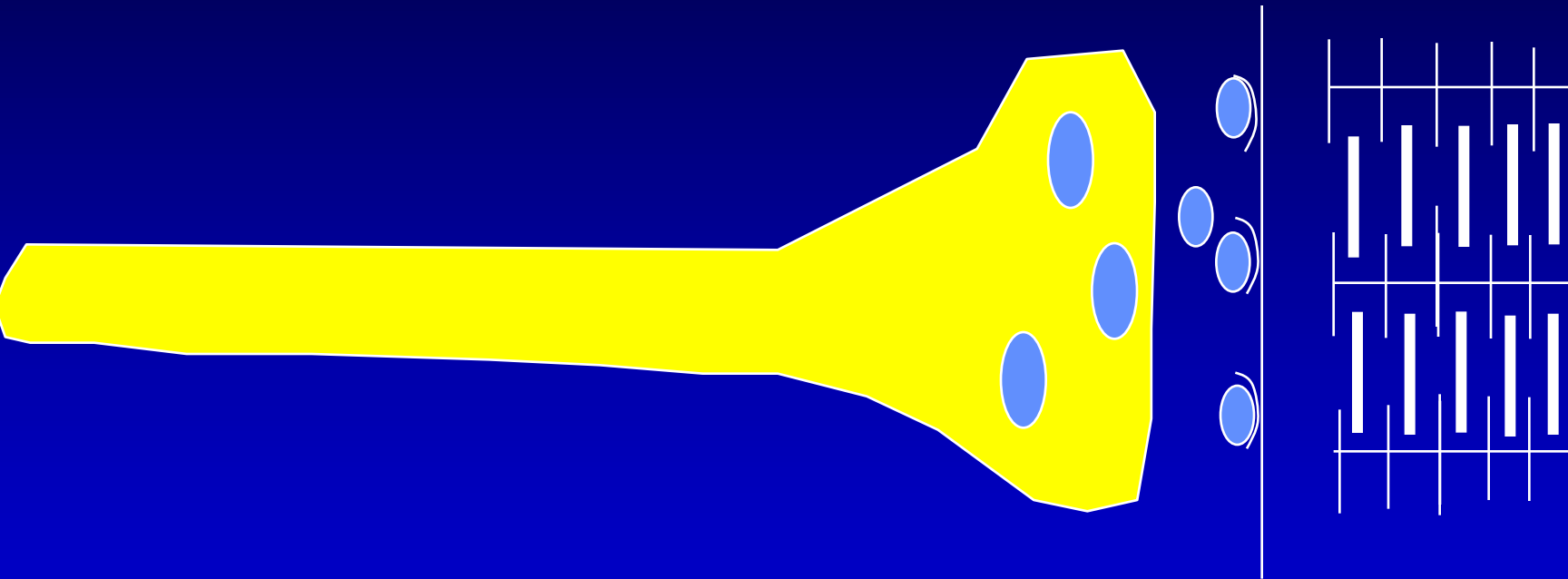
SYNAPSE



SYNAPSE

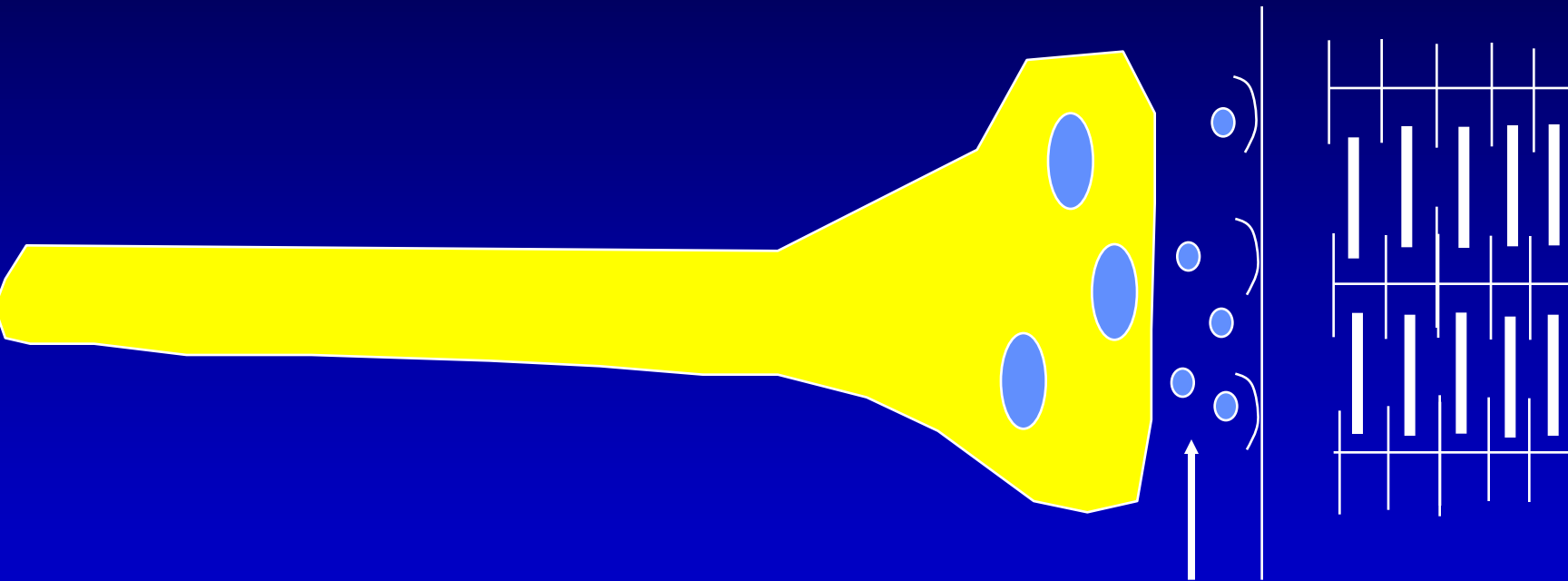


SYNAPSE



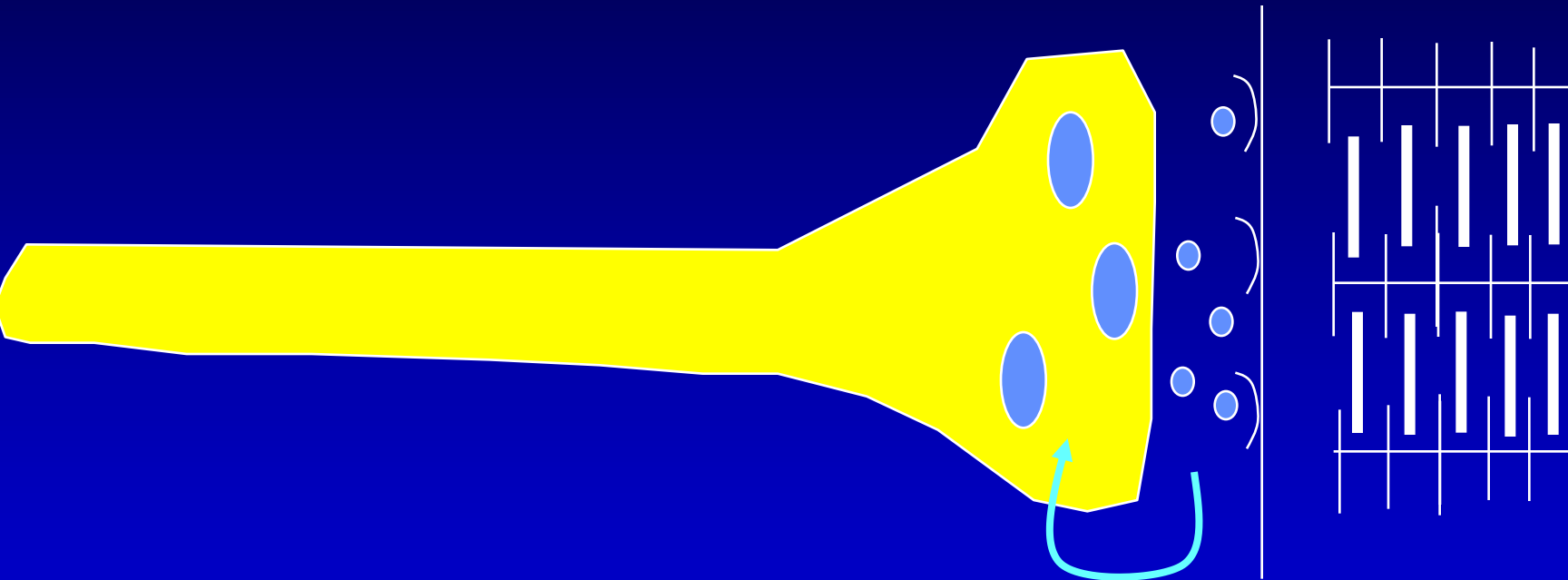
kontrakce

SYNAPSE



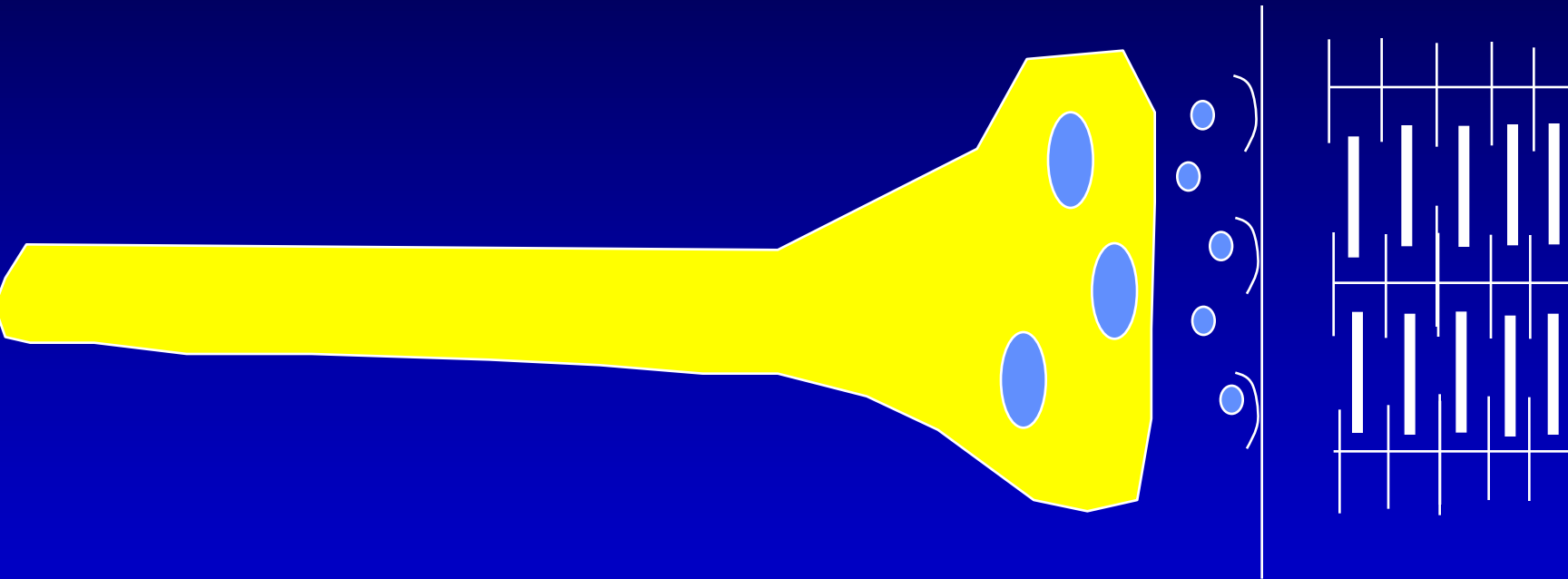
acetylcholinesteráza

SYNAPSE



resyntéza

SYNAPSE



acetyl + cholin