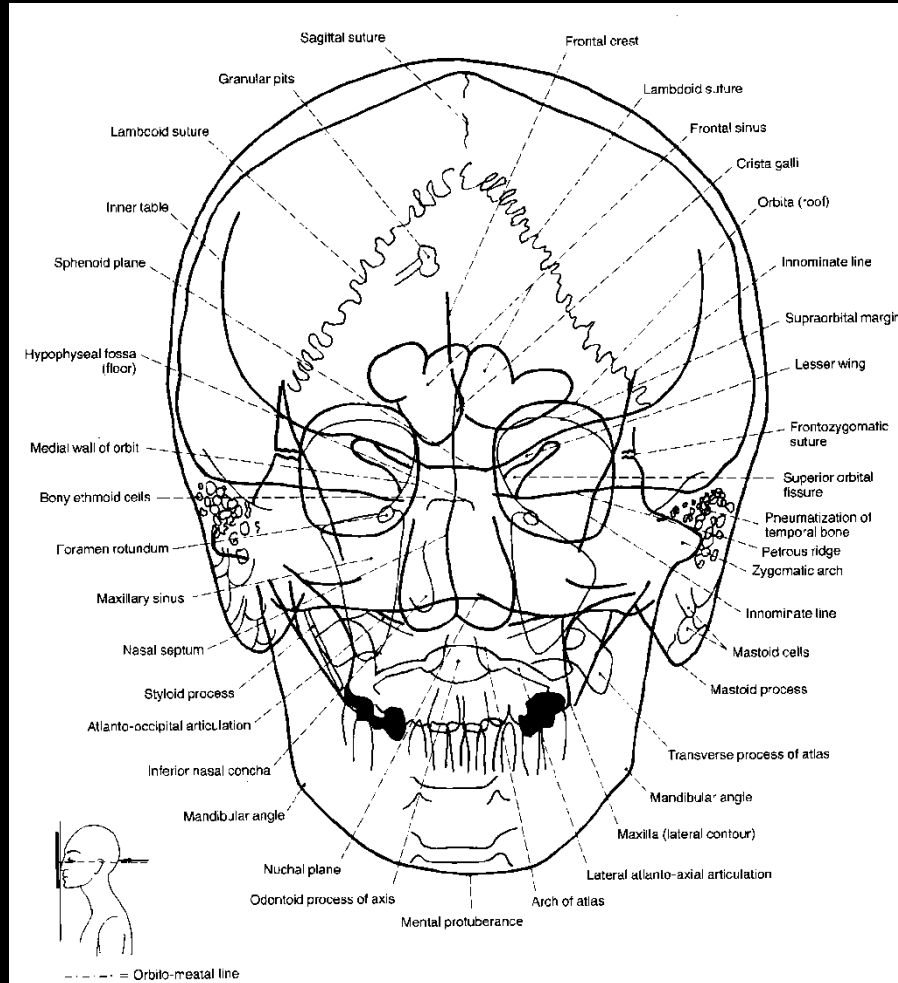
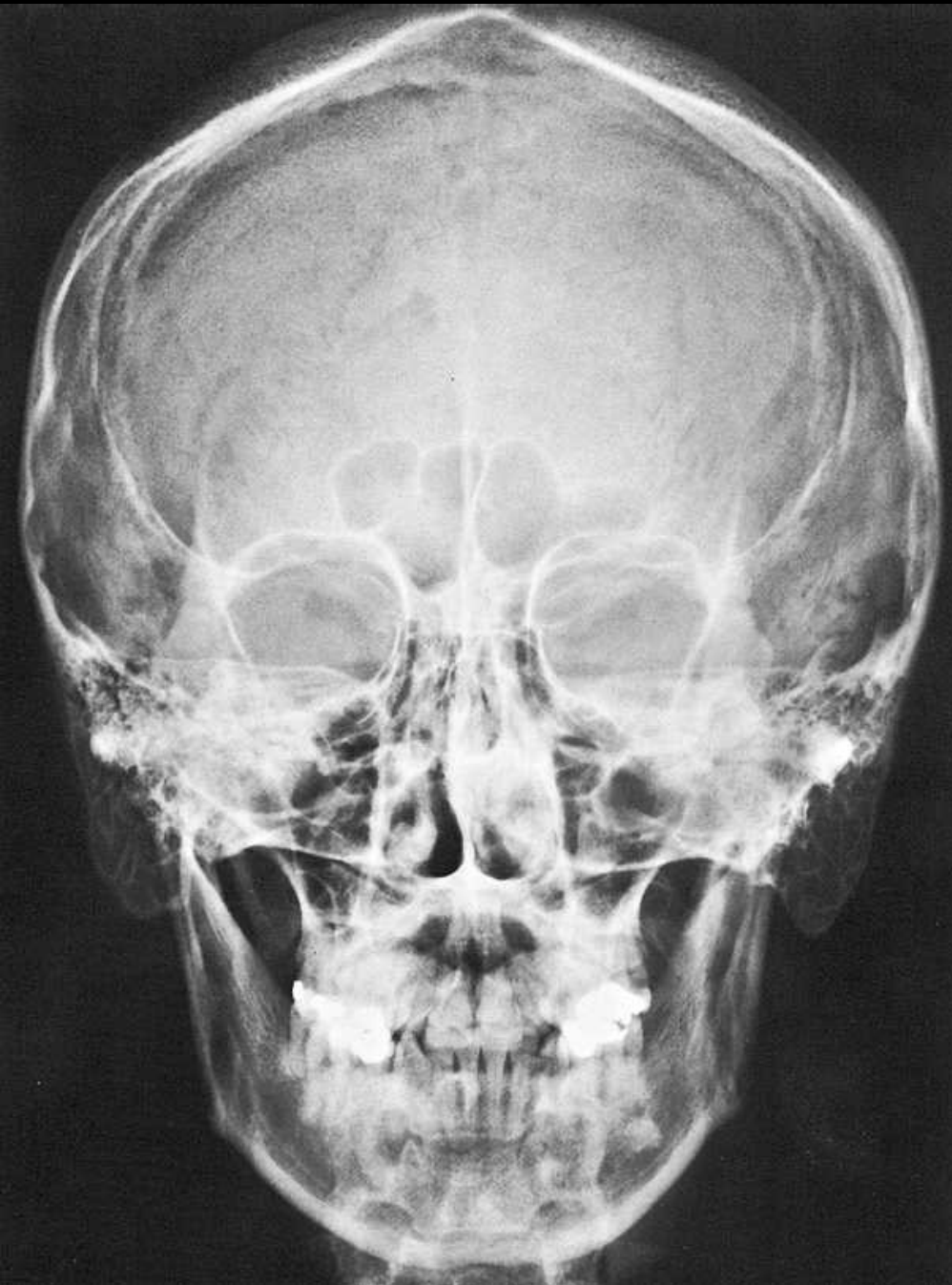
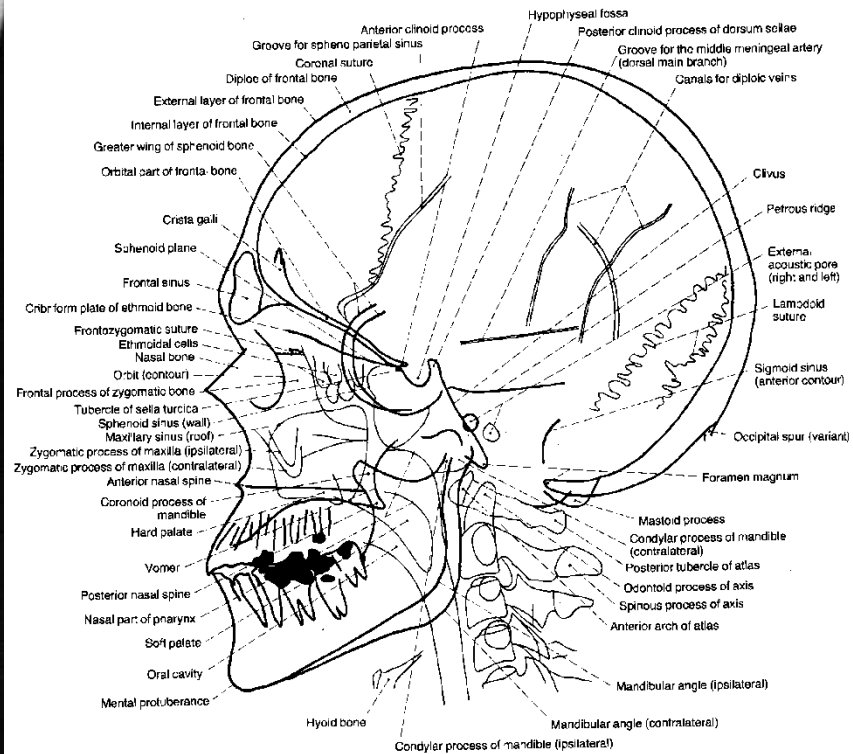
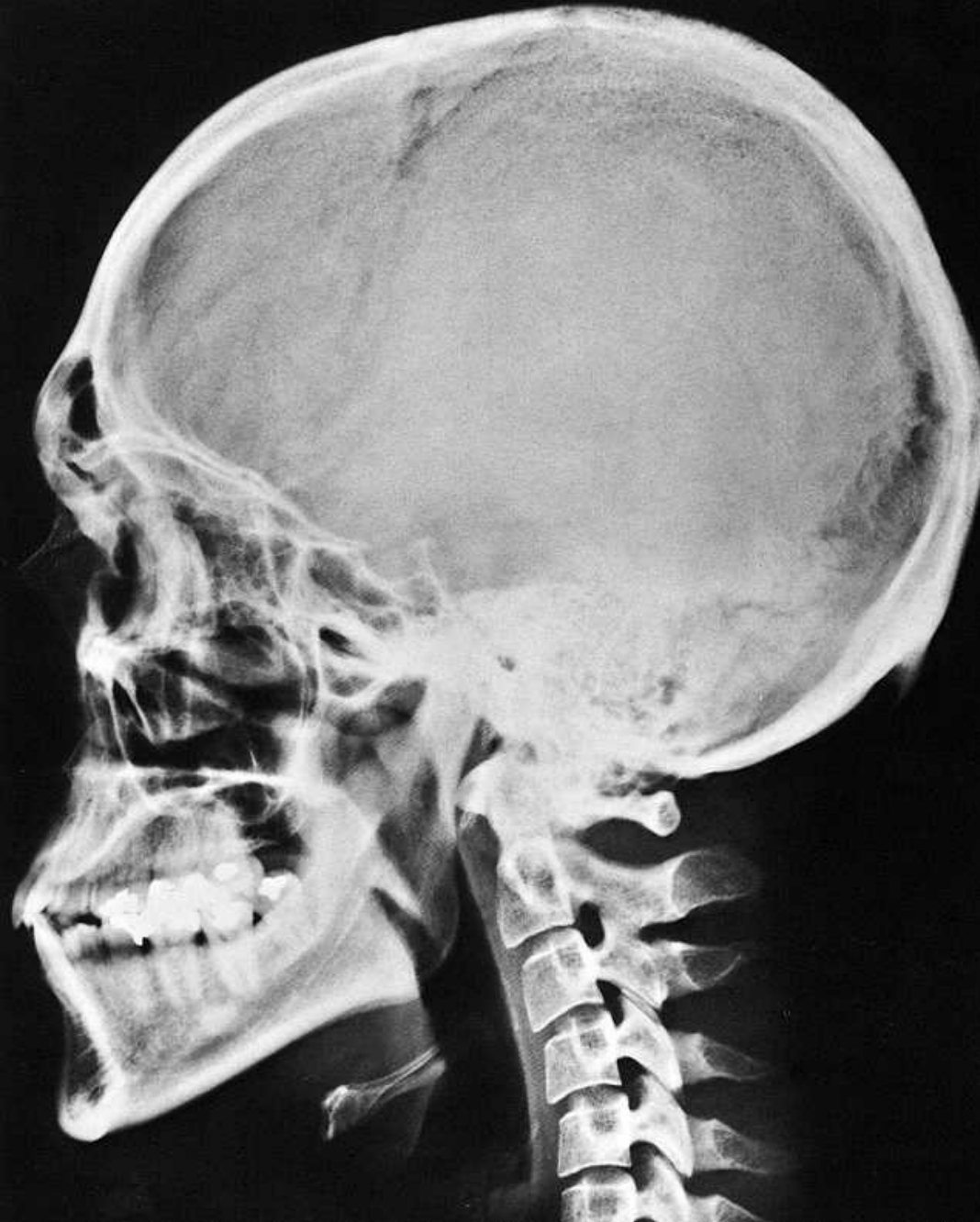


PA XR- Plain Film



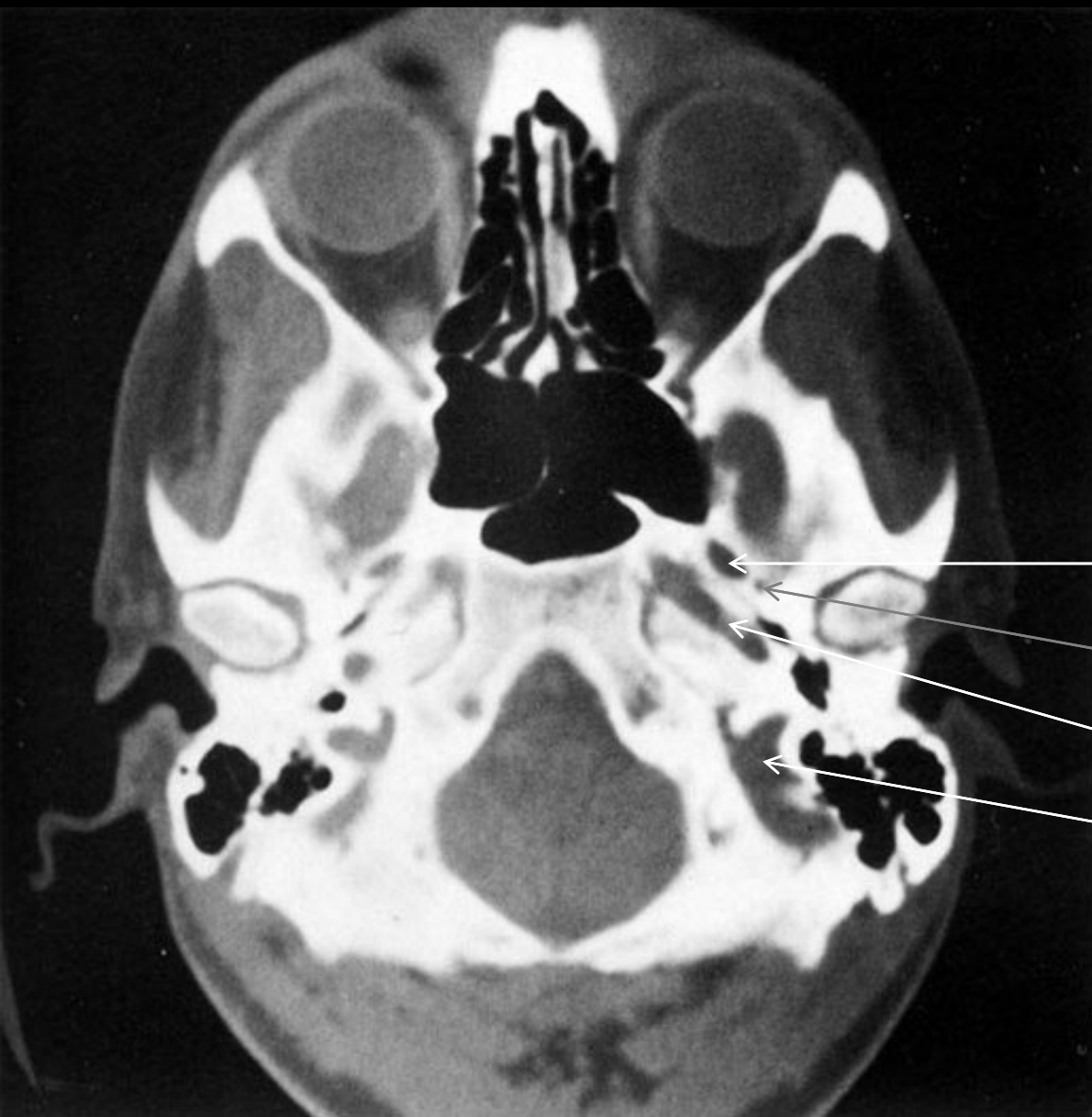
Lateral XR – Plain Film



SEMIAXIAL XR – Plain Film



BASE OF SKULL – AXIAL CT



For. ovale

For. spinosum

Canalis caroticus

For. jugulare

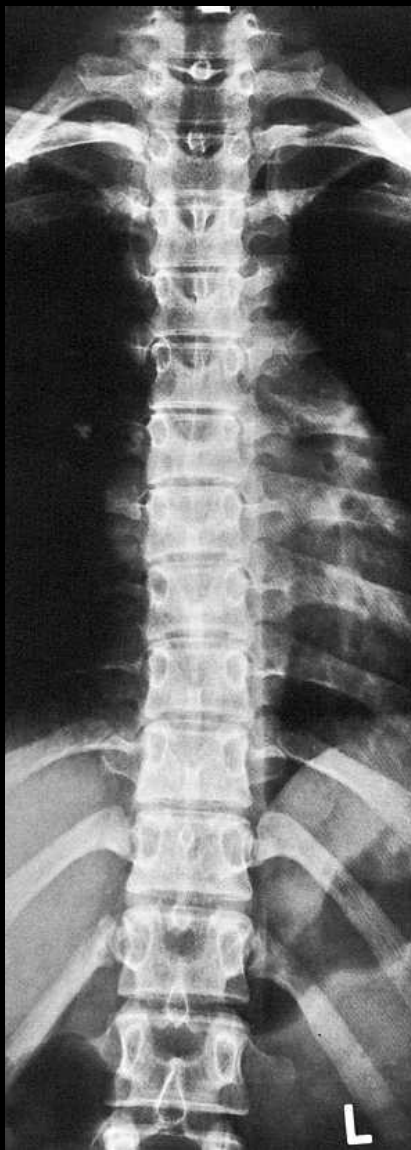
C spine – AP XR - plain



C spine – Lateral XR - plain



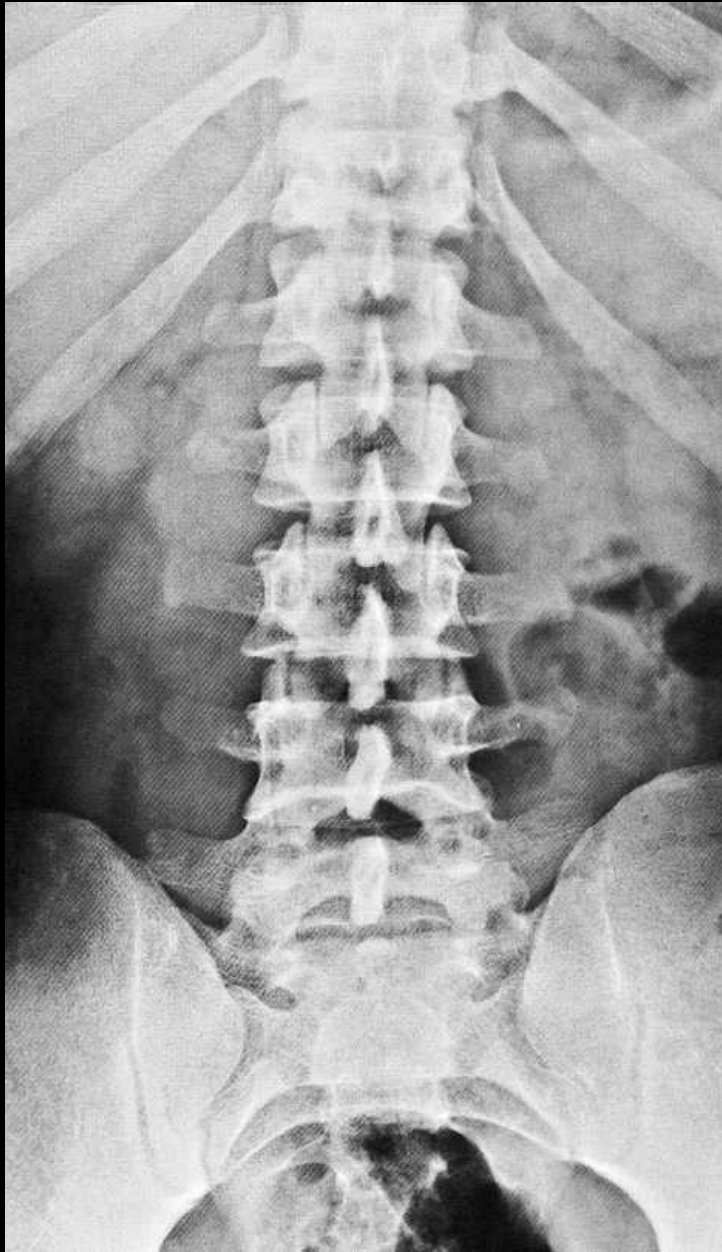
T spine – AP: XR - plain



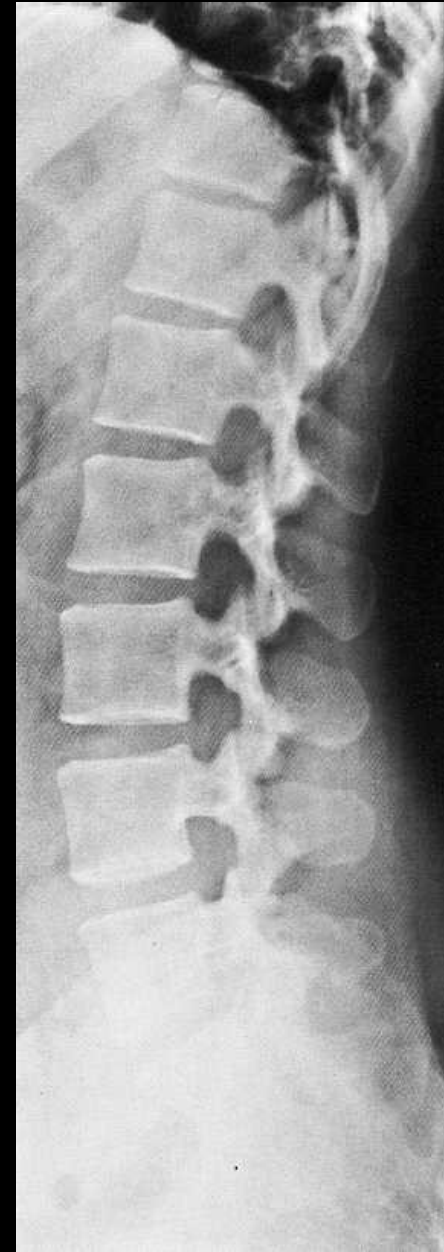
T spine – Lateral: XR - plain



L spine – AP: XR - plain



L spine – Lateral: XR - plain



Glenohumeral Joint – PA XR – Plain Film



Right Elbow - AP XR - Plain



Right Hand- AP XR - Plain



Pelvis – AP XR – Plain Film



ART. GENUS – AP XR-Plain Film



Lateral XR-Plain Film

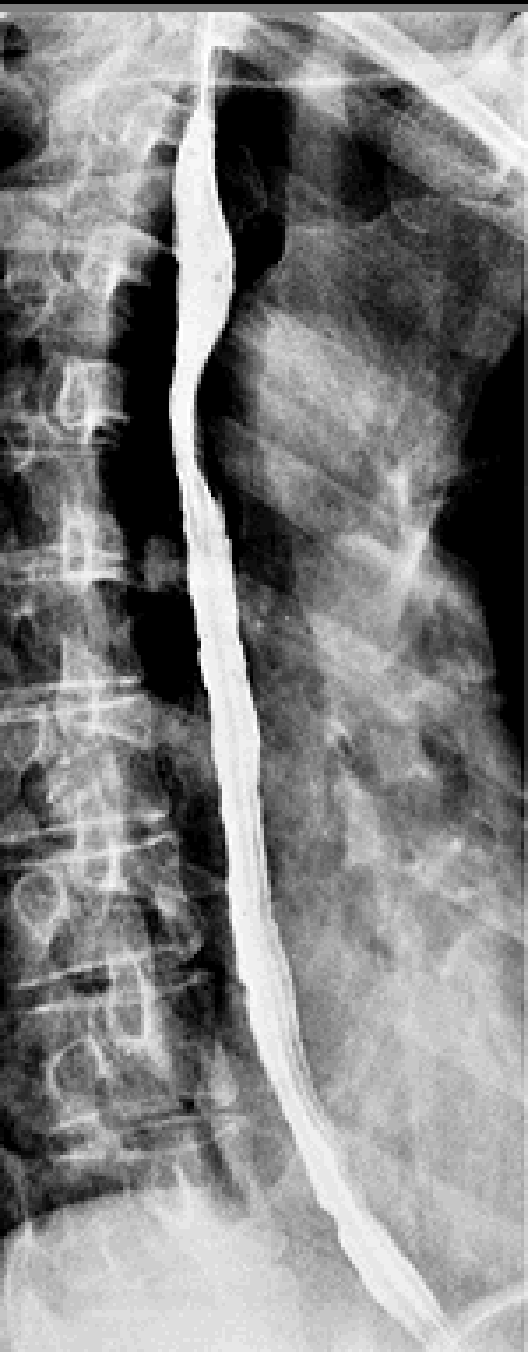




Lateral XR - Plain Film



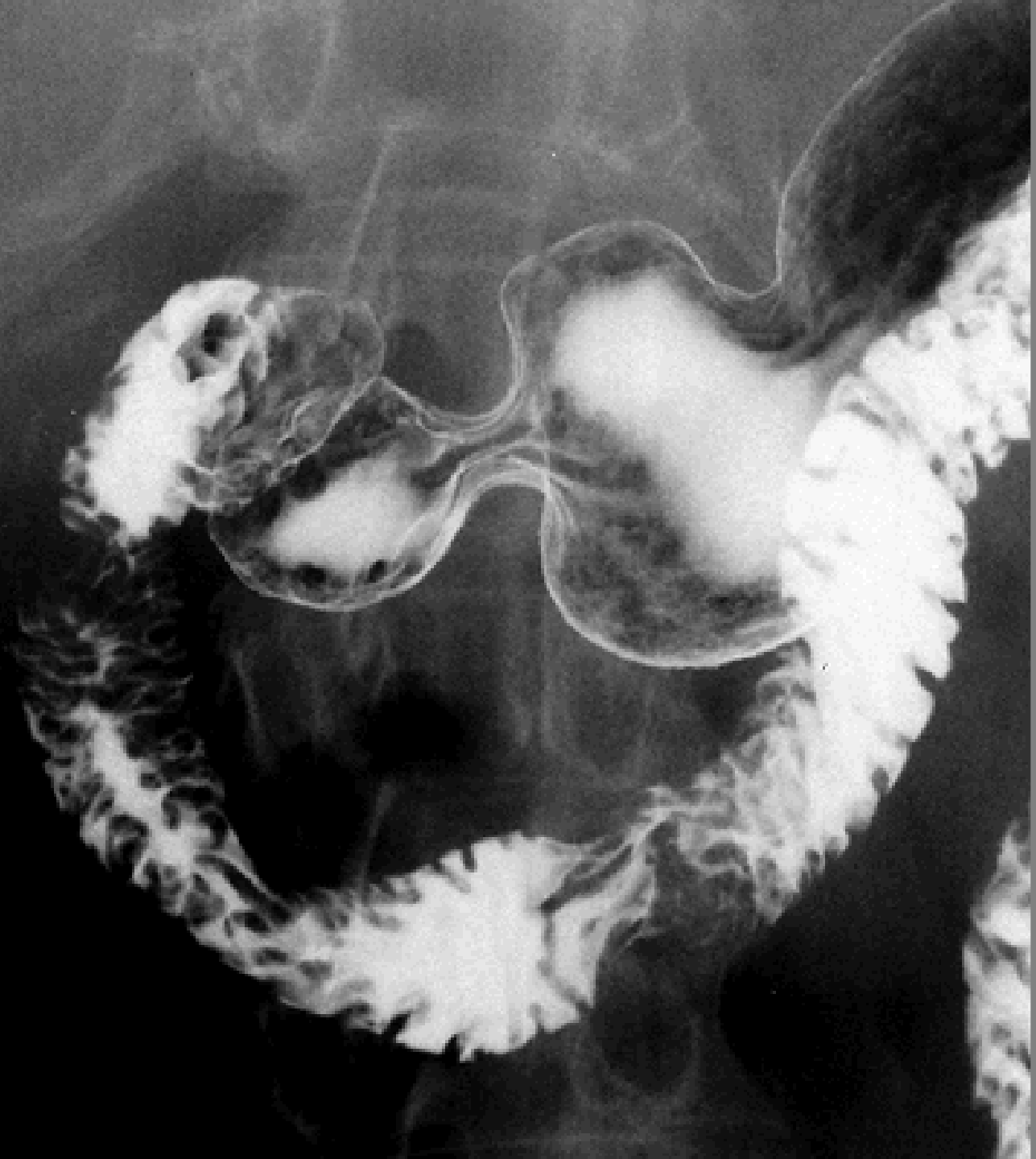
OESOPHAGOGGRAPHY



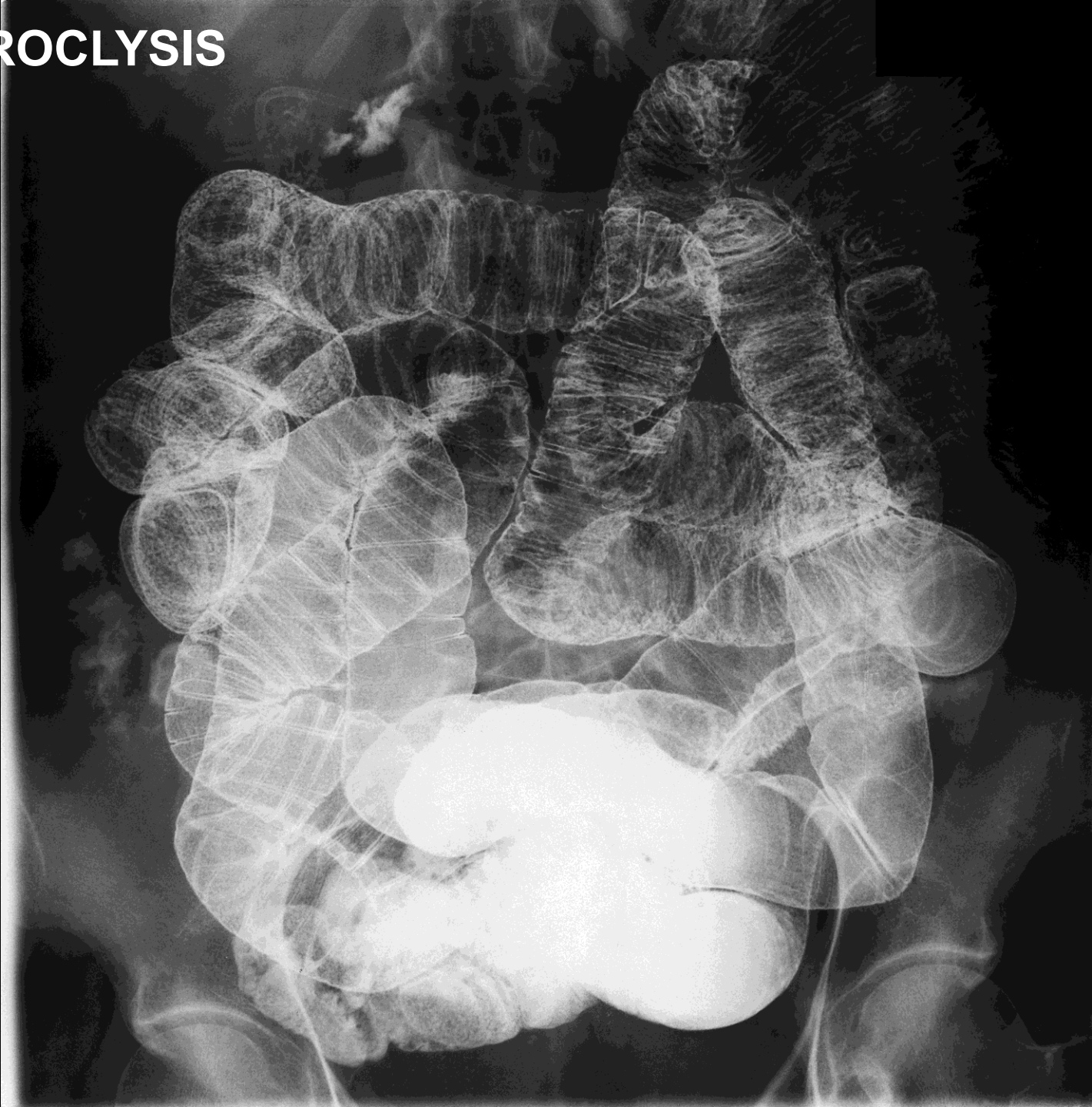
GASTROGRAPHY







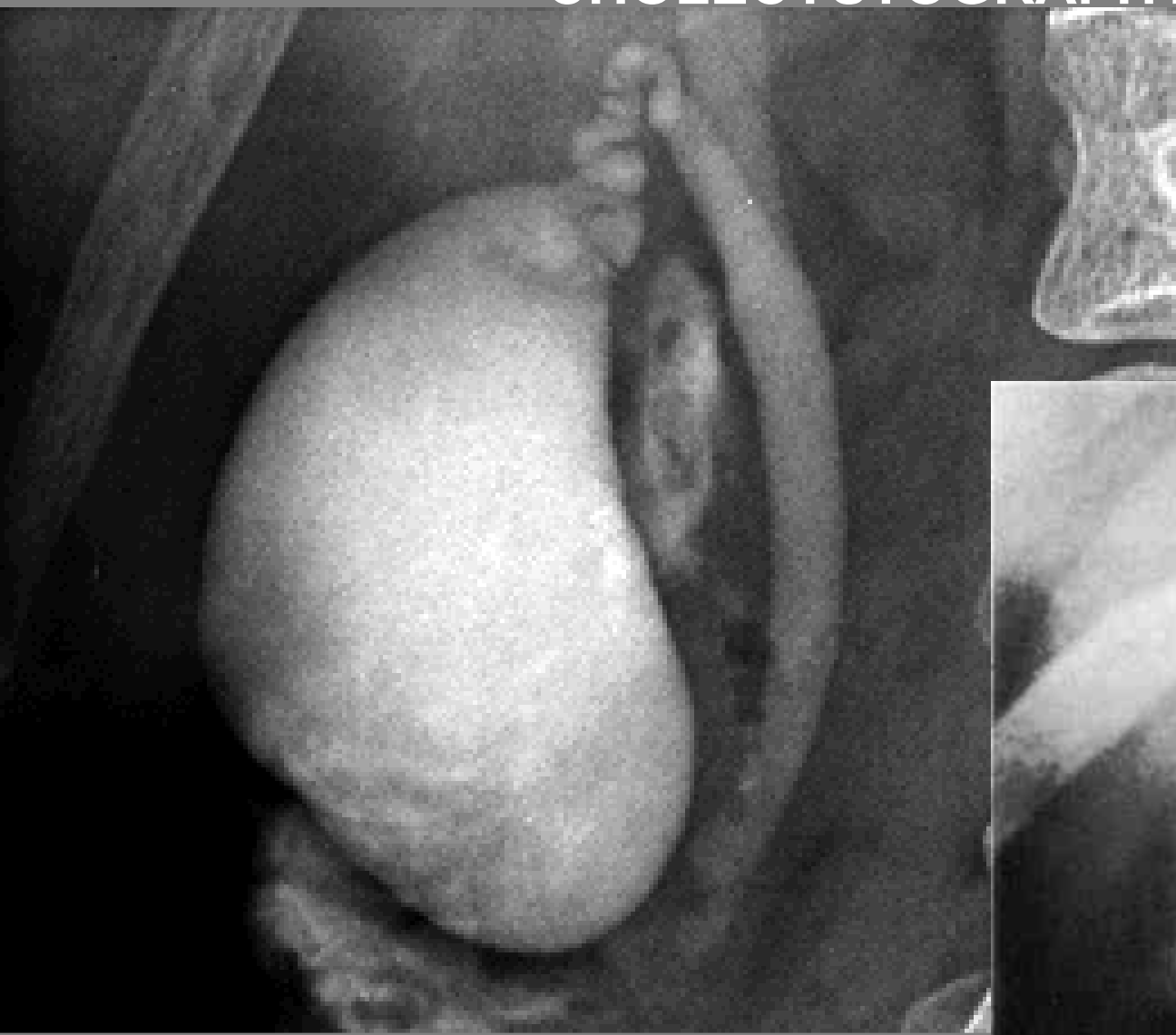
ENTEROCYCLYSIS



IRIGOGRAPHY (BARIUM ENEMA)



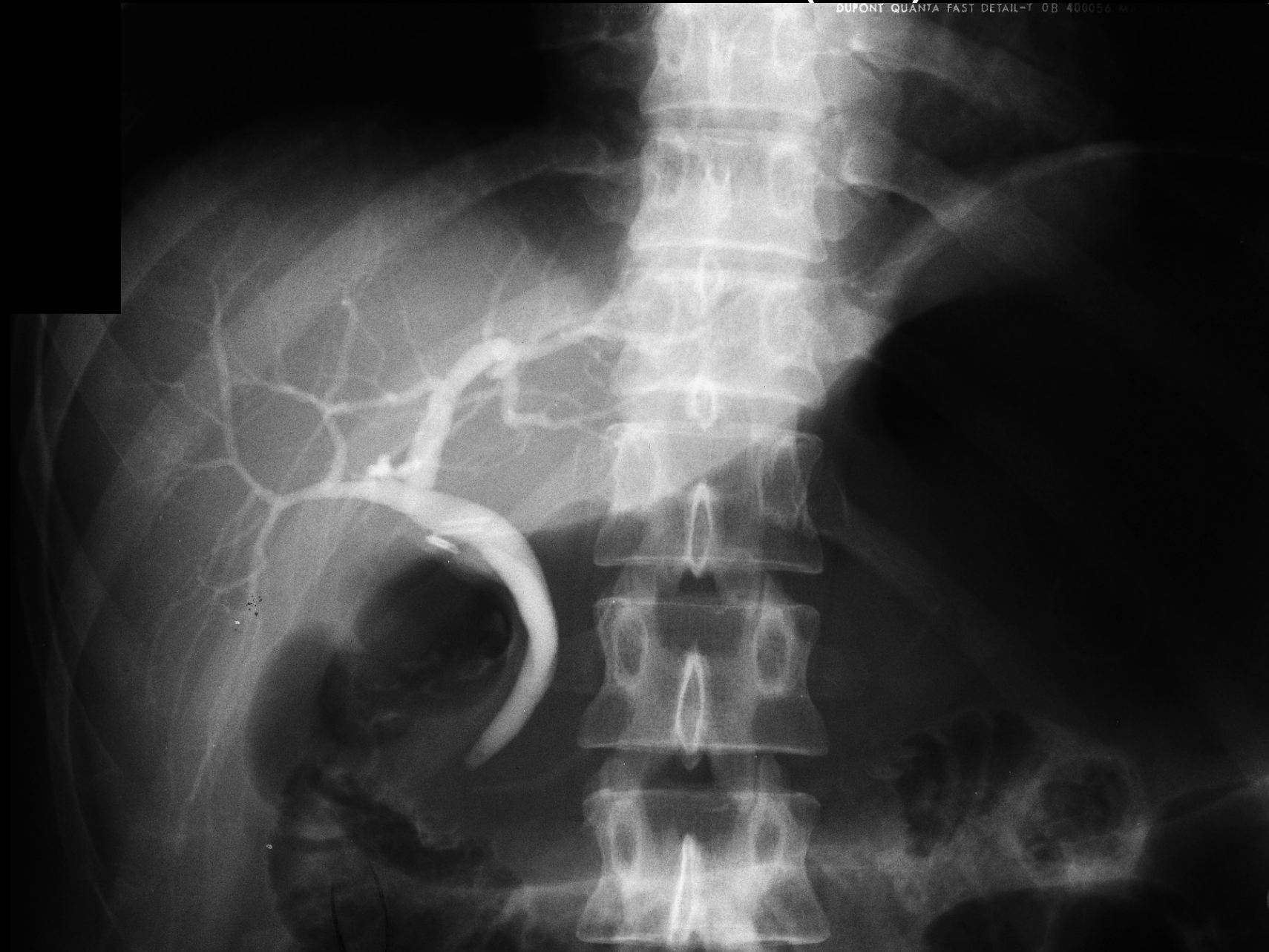
CHOLECYSTOGRAPHY

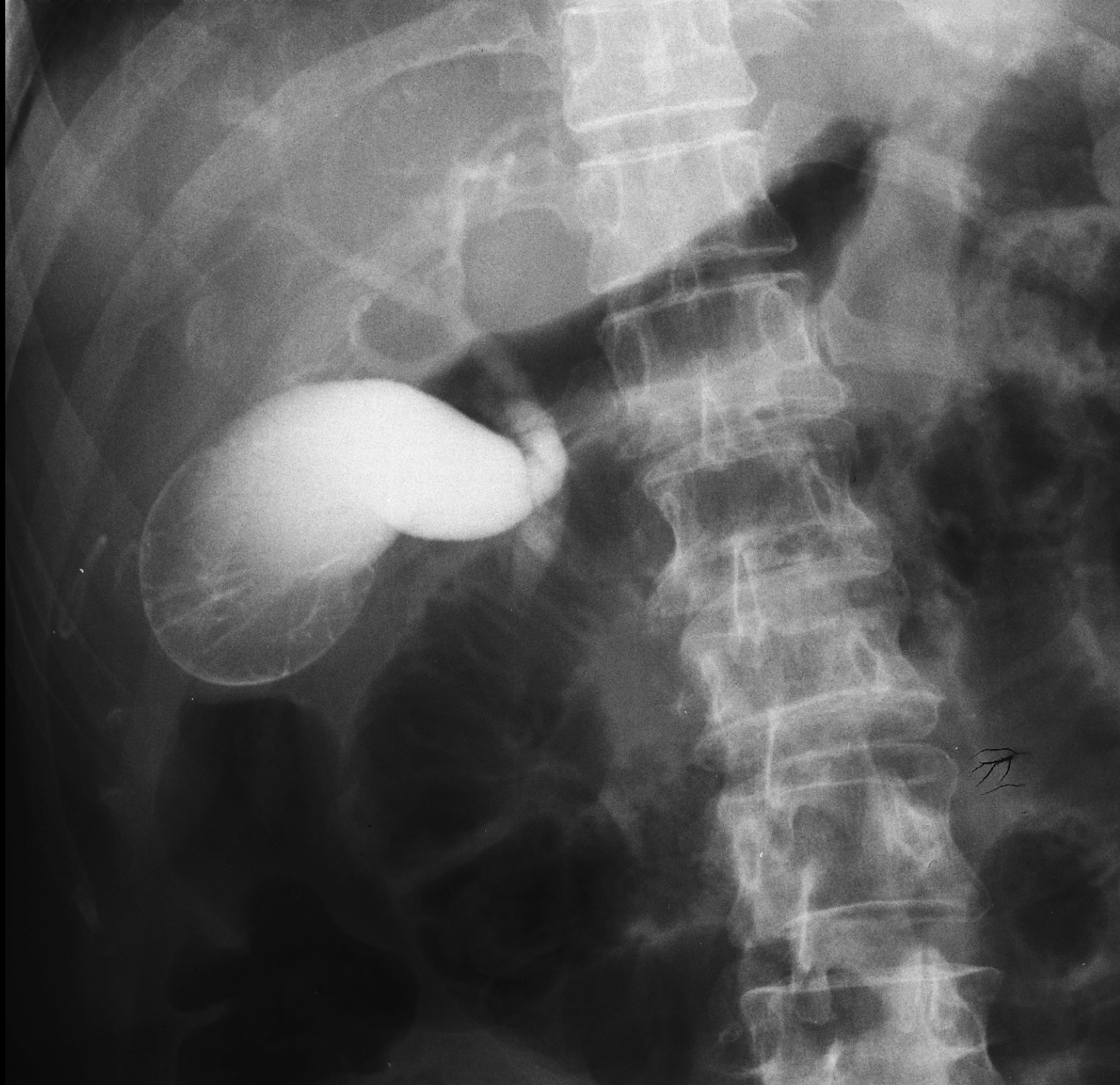


CHOLANGIOGRAPHY (PTC)

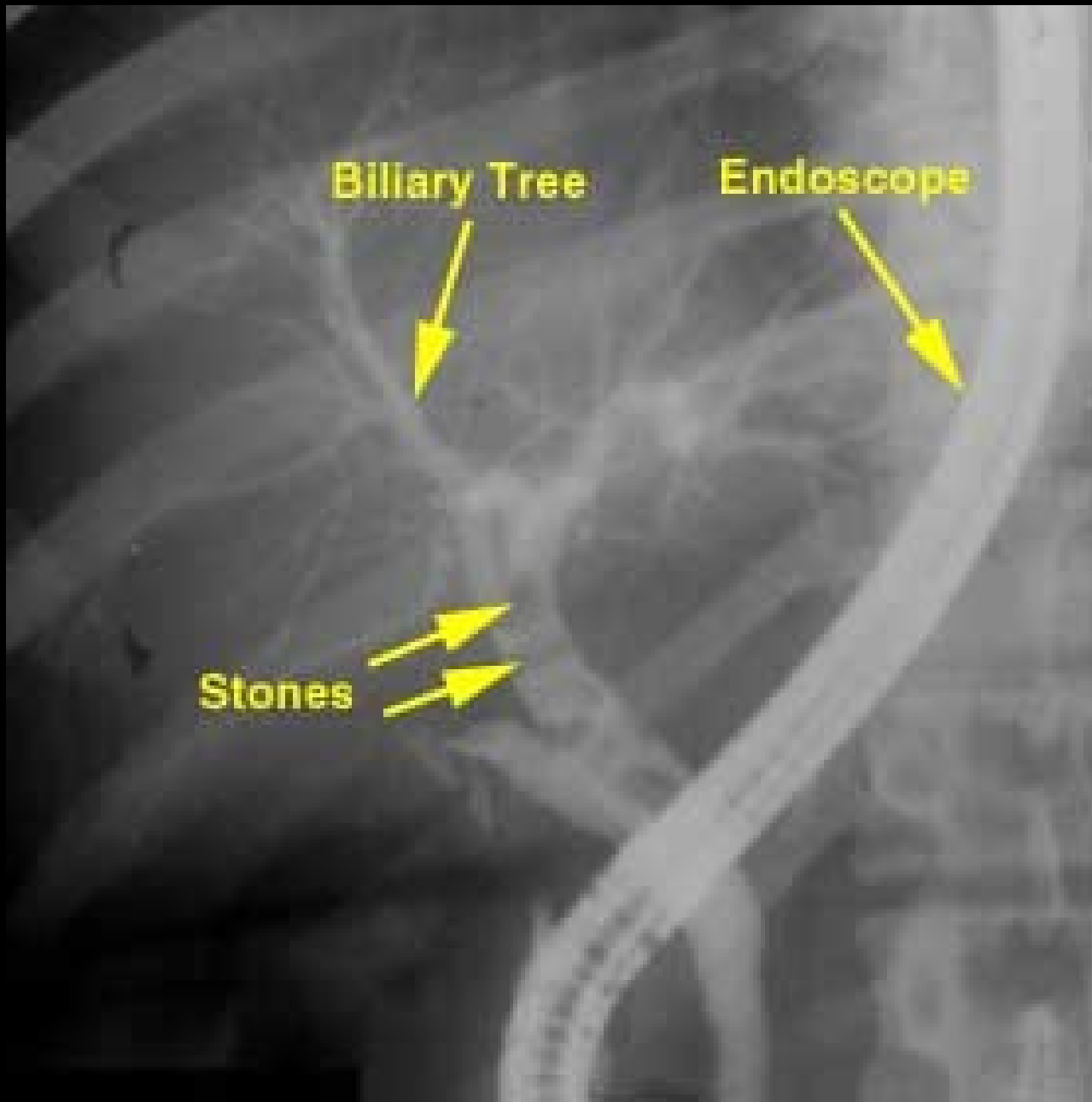
DUFONT QUANTA FAST DETAIL-T 0B 400056

DUFONT QUANTA FAST DETAIL-T 0B 400056

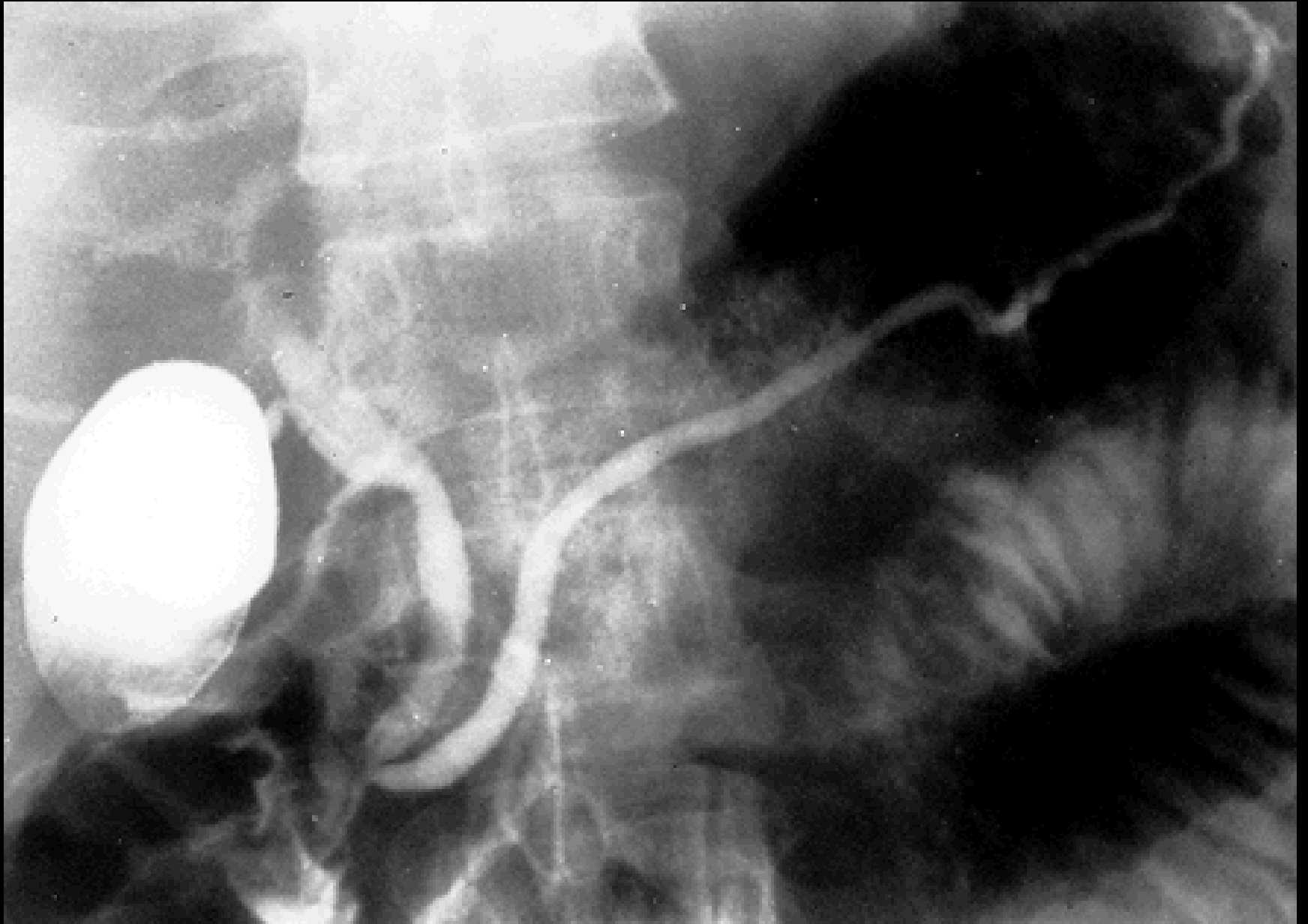




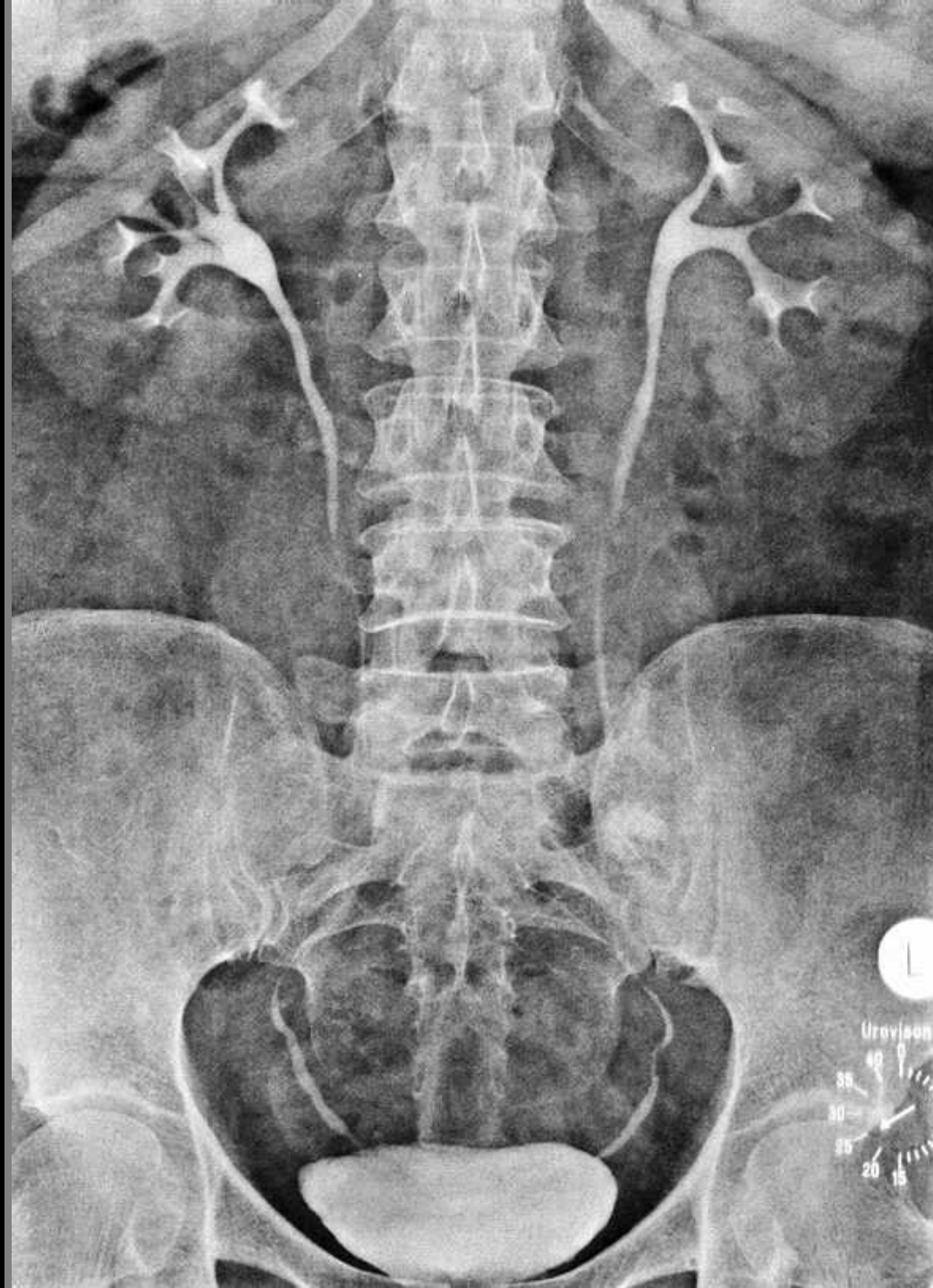
ENDOSCOPIC RETROGRADE CHOLEDOCHOGRAPHY



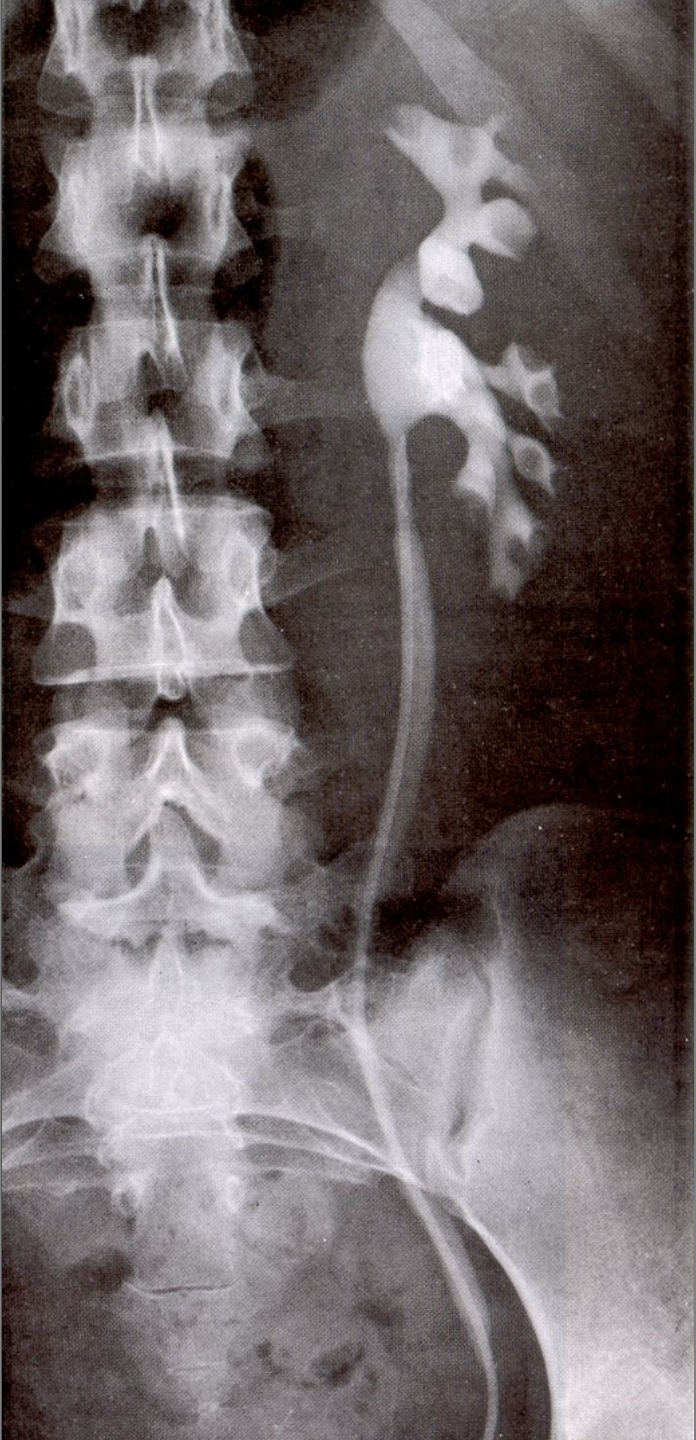
ERCP – endoscopic retrograde cholangiopancreatography



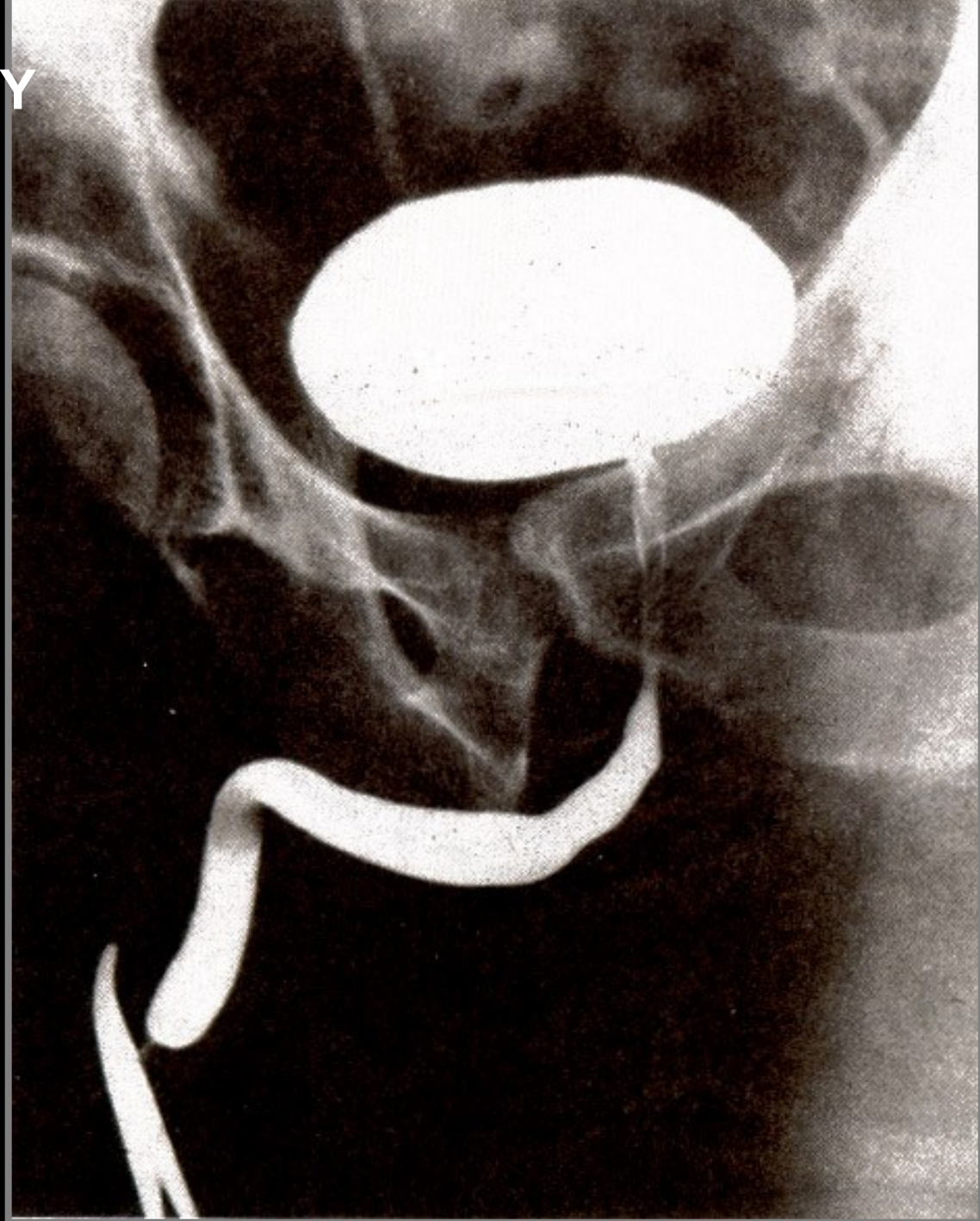
**INTRAVENOUS
UROGRAPHY
(PYELOGRAPHY)**



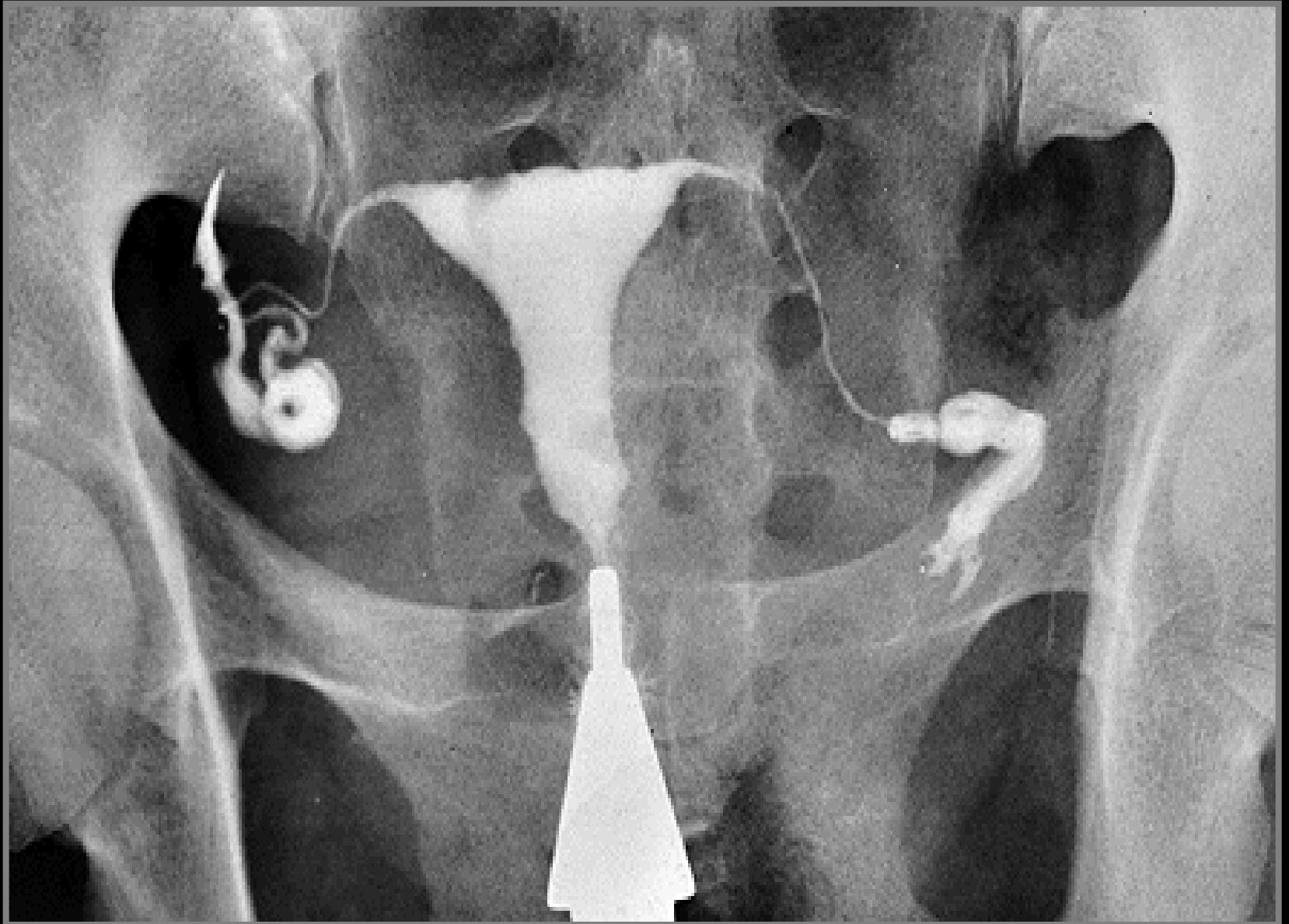
**ASCENDING
(RETROGRADE)
PYELOGRAPHY**



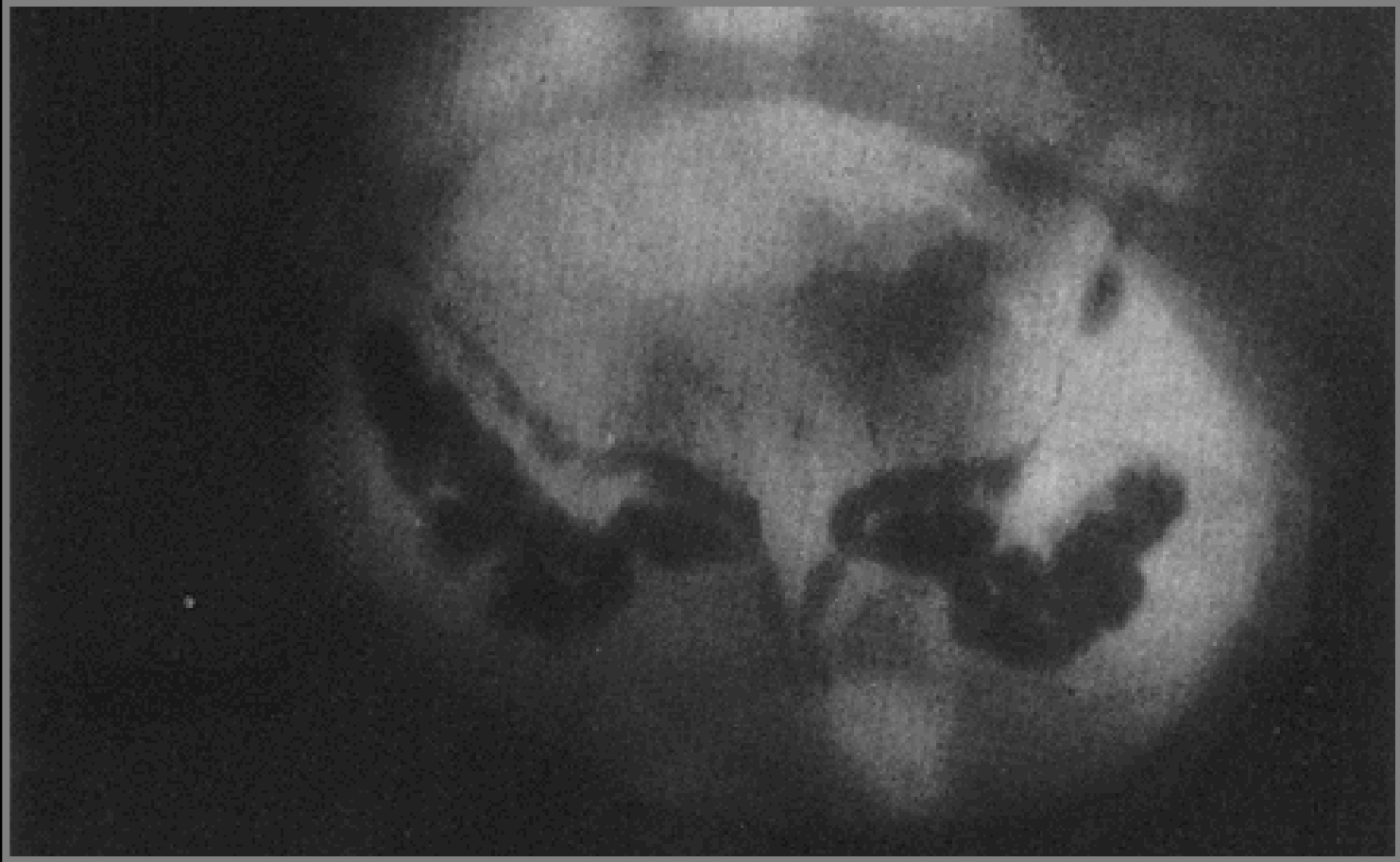
CYSTOGRAPHY

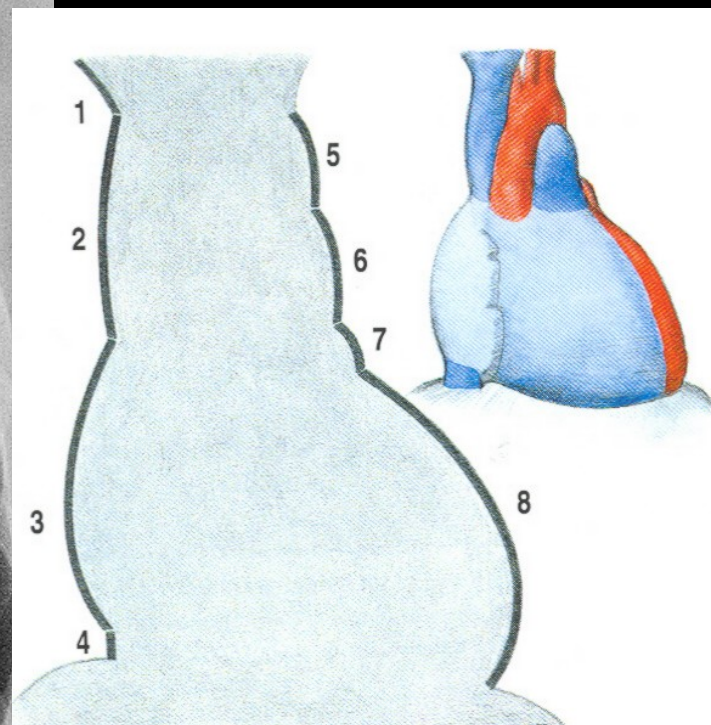
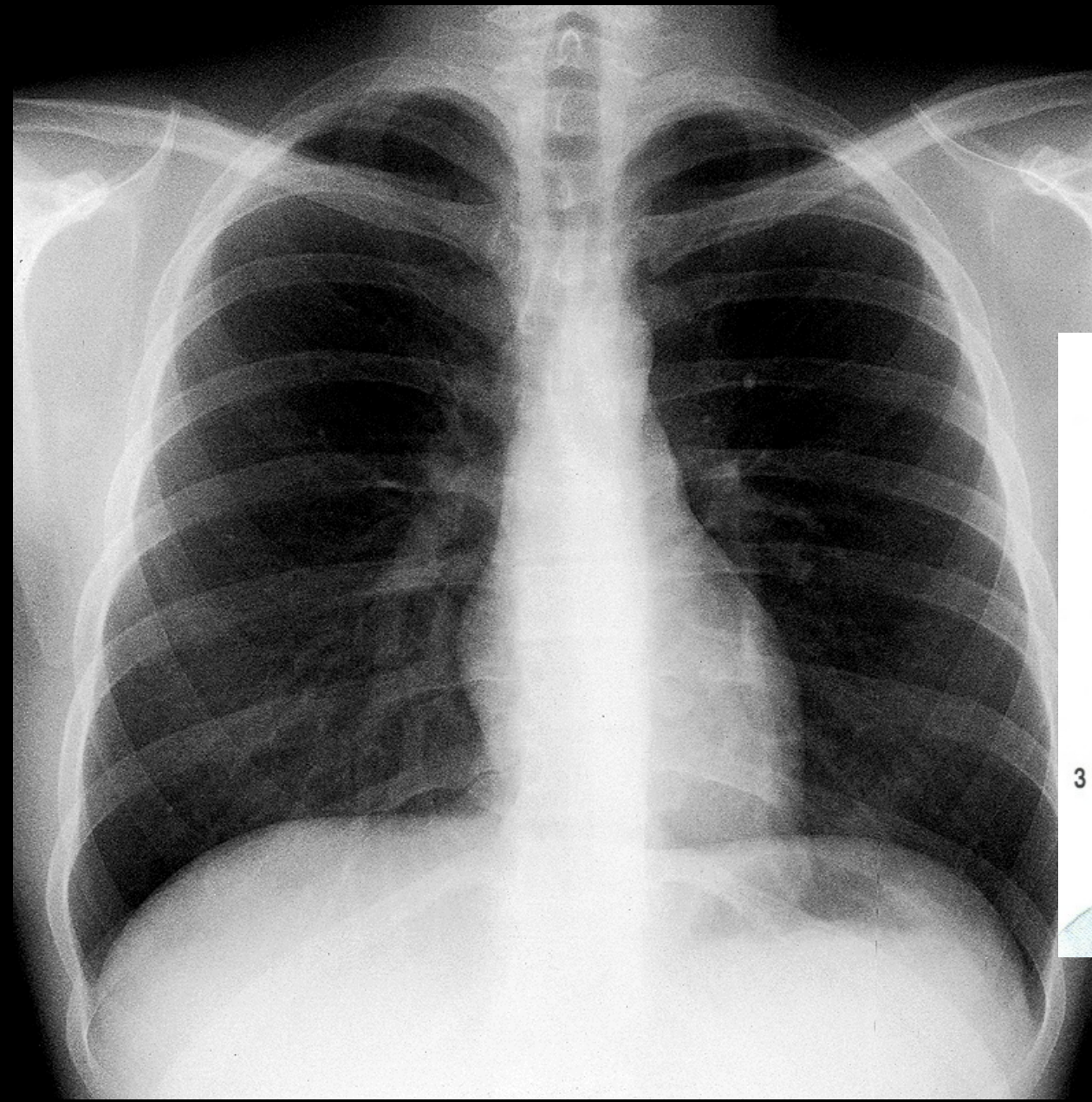


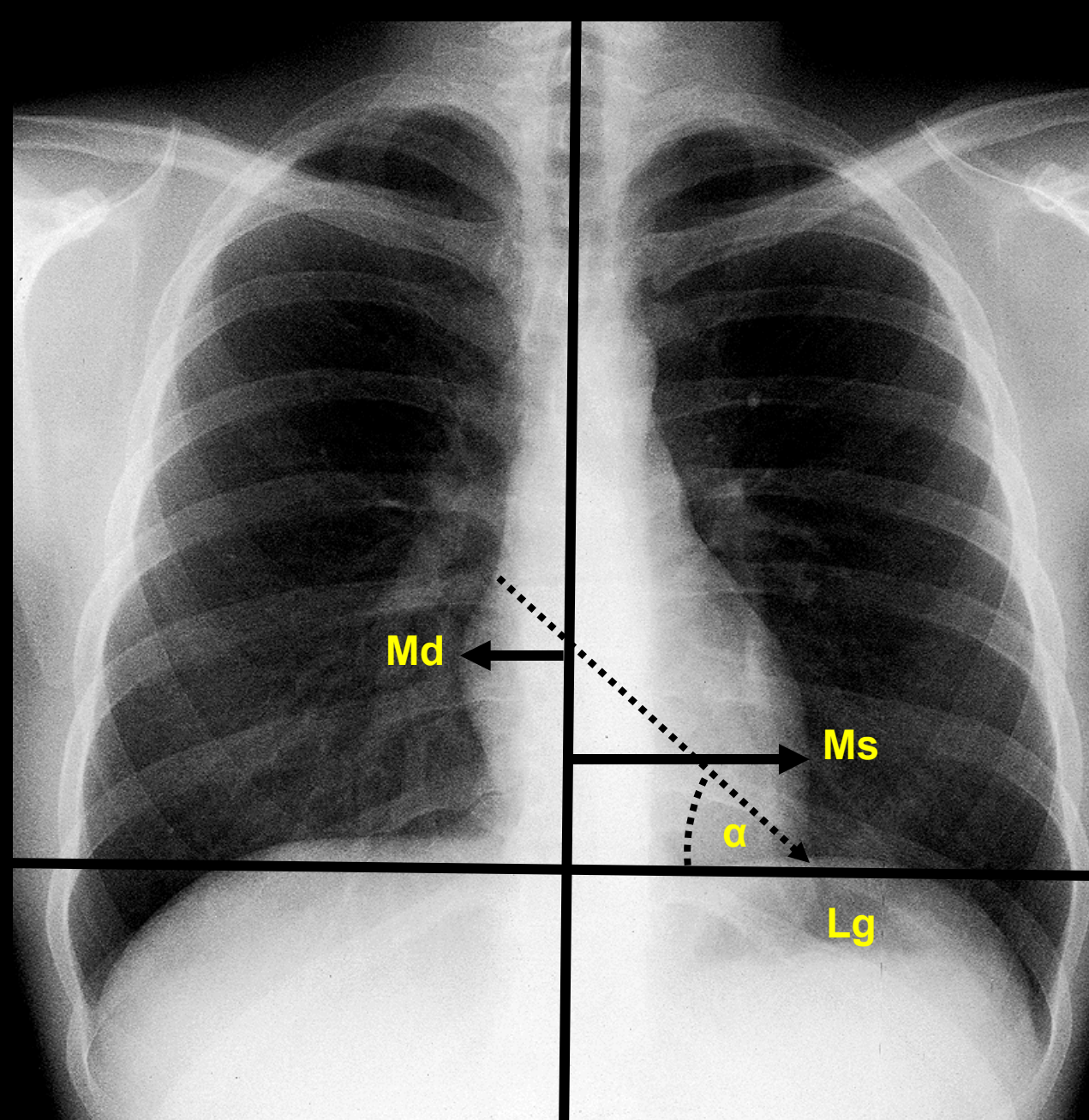
HYSTEOSALPINGOGRAPHY



SEMINAL VESICULOGRAPHY







Md - distantia mediodextra
4 - 4,5 cm

Ms - distantia mediosinistra
8 - 9 cm

Transverse line of the heart
 $Md + Ms = 15 \text{ cm}$

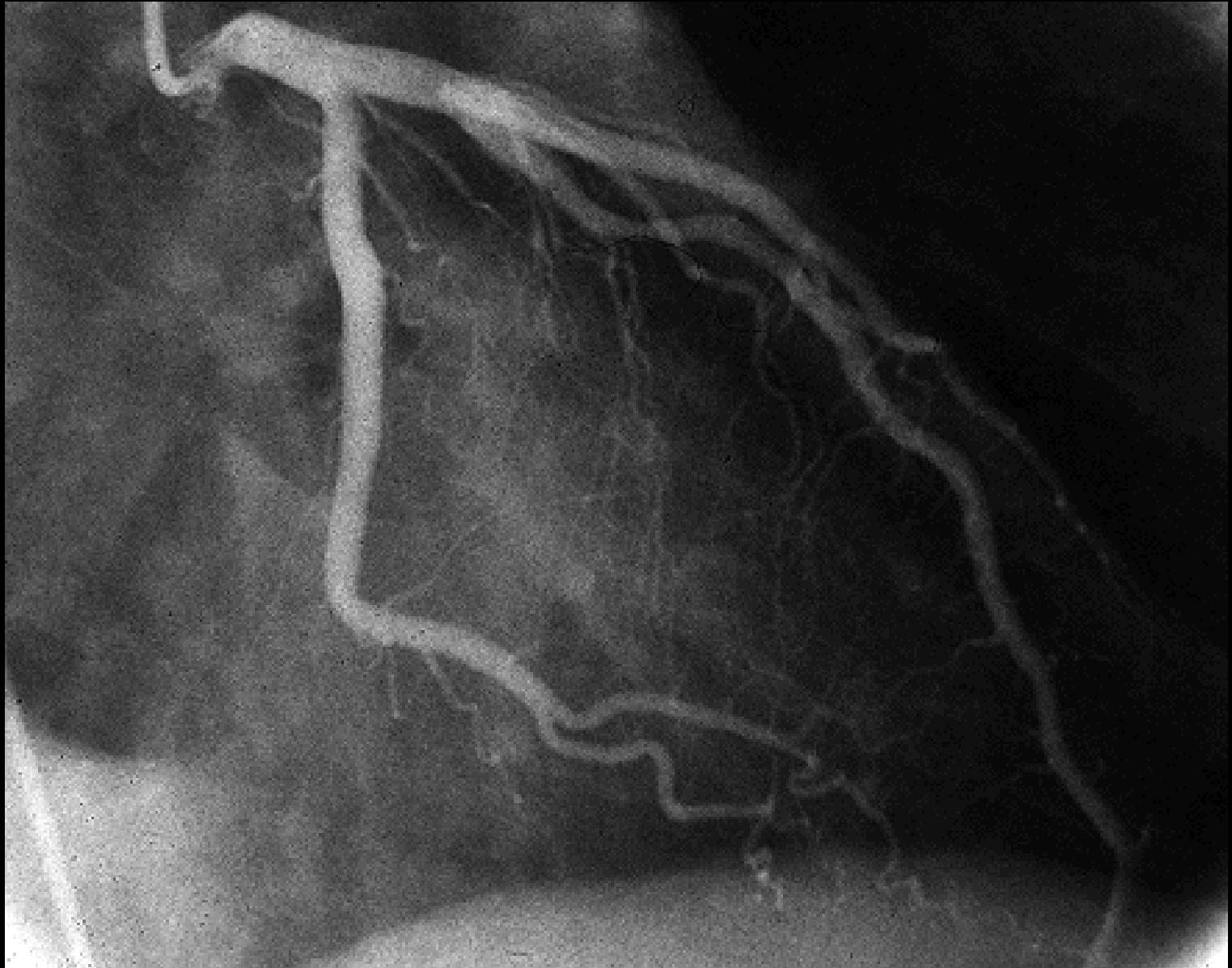
Lg (longitudo) - length of the heart

α - inclination of the heart
 $= 45^\circ$

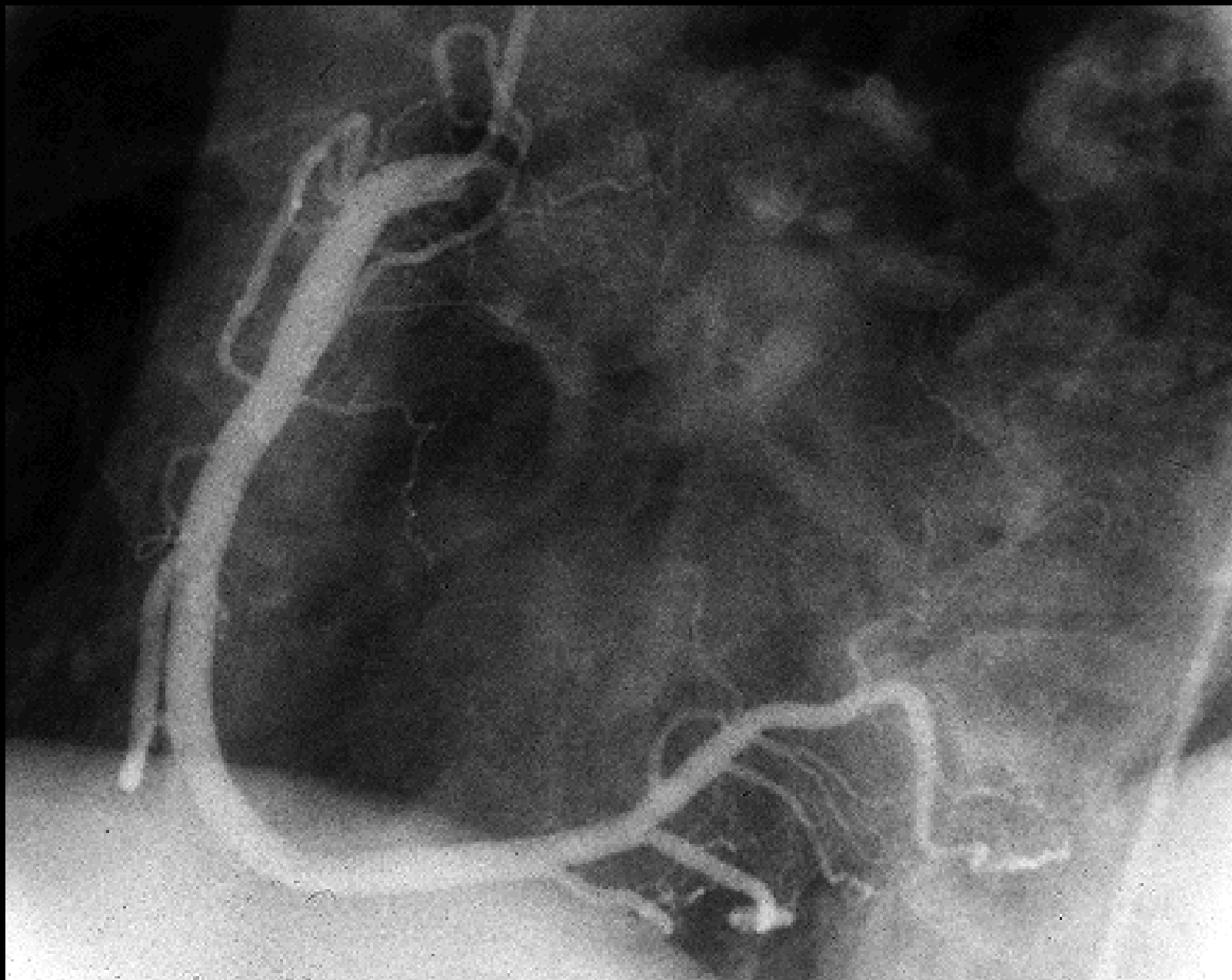
horizontal line

median plane

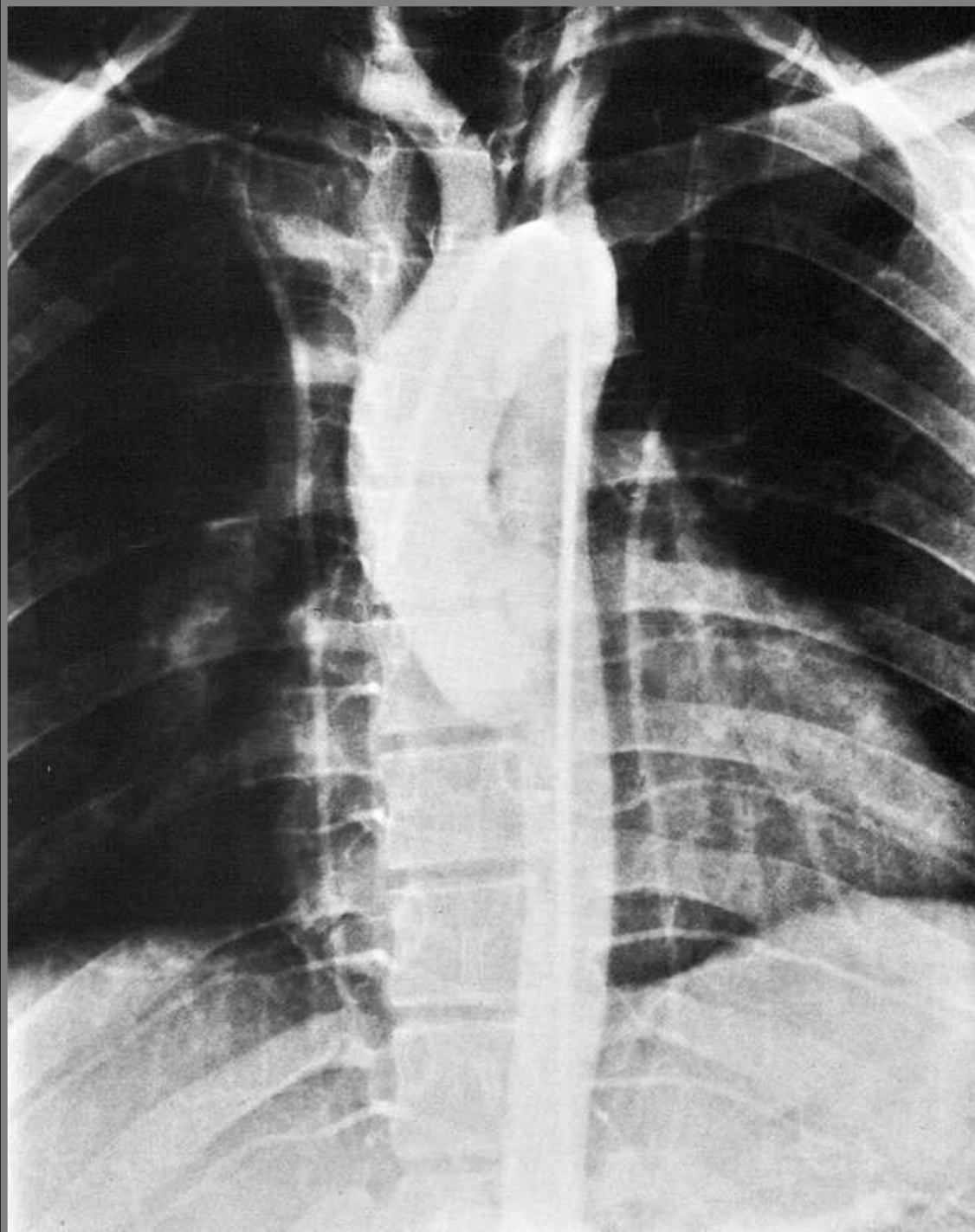
LEFT CORONARY ARTERY – RIGHT ANTERIOR OBLIQUE VIEW



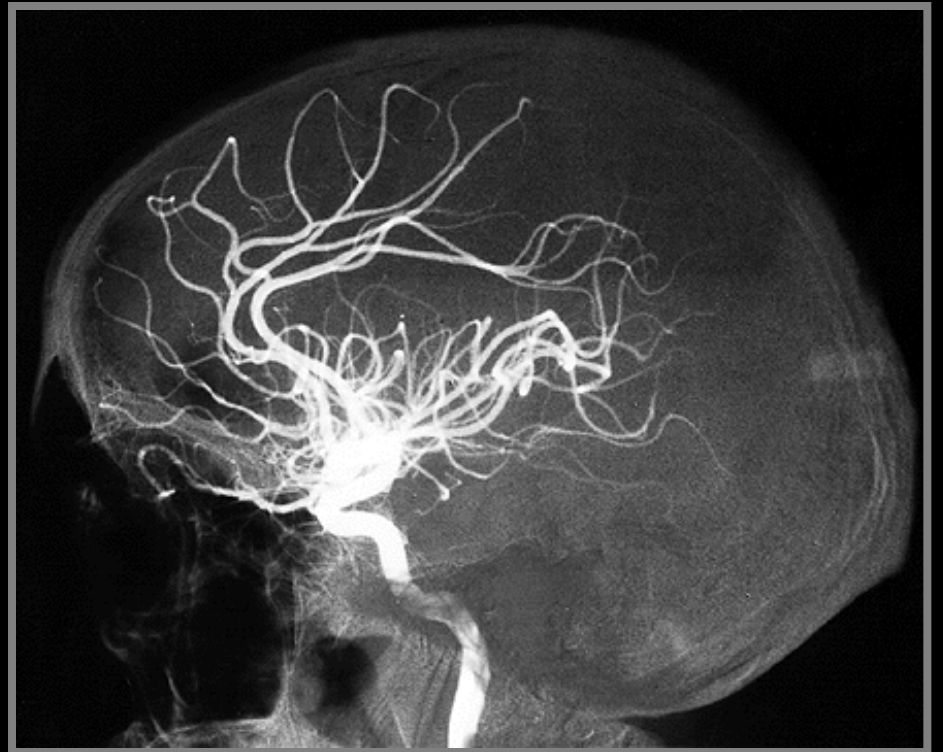
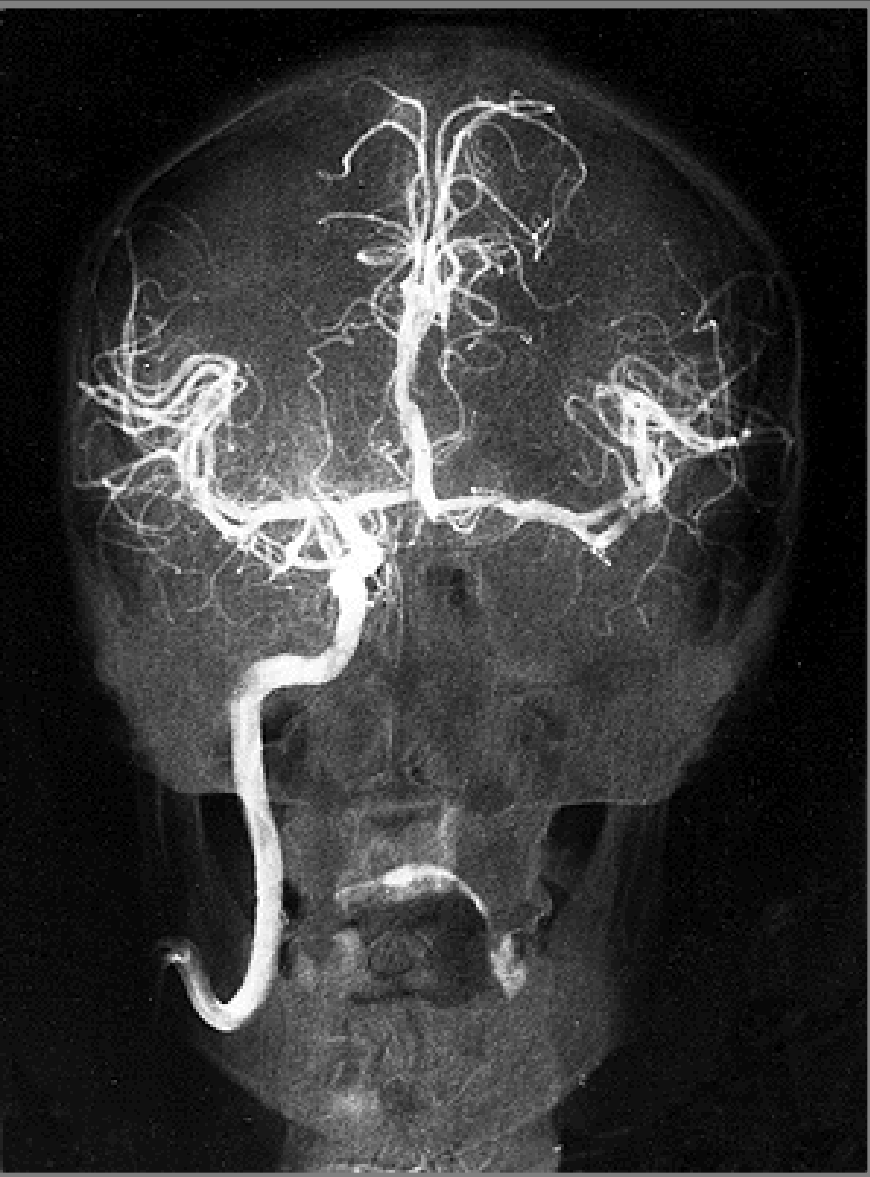
RIGHT CORONARY ARTERY – LEFT ANTERIOR OBLIQUE VIEW



AORTOGRAPHY



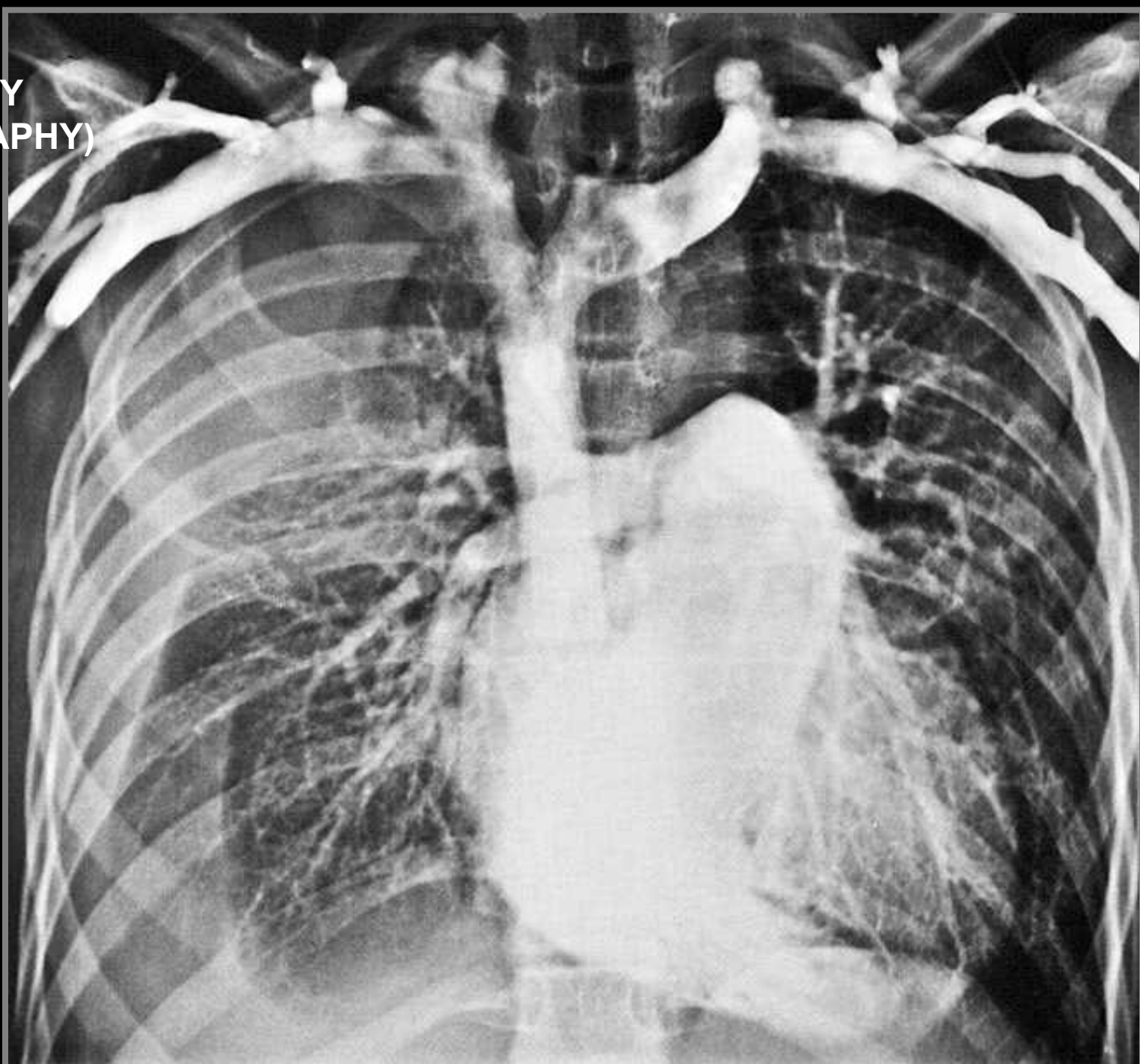
CAROTID ANGIOGRAPHY

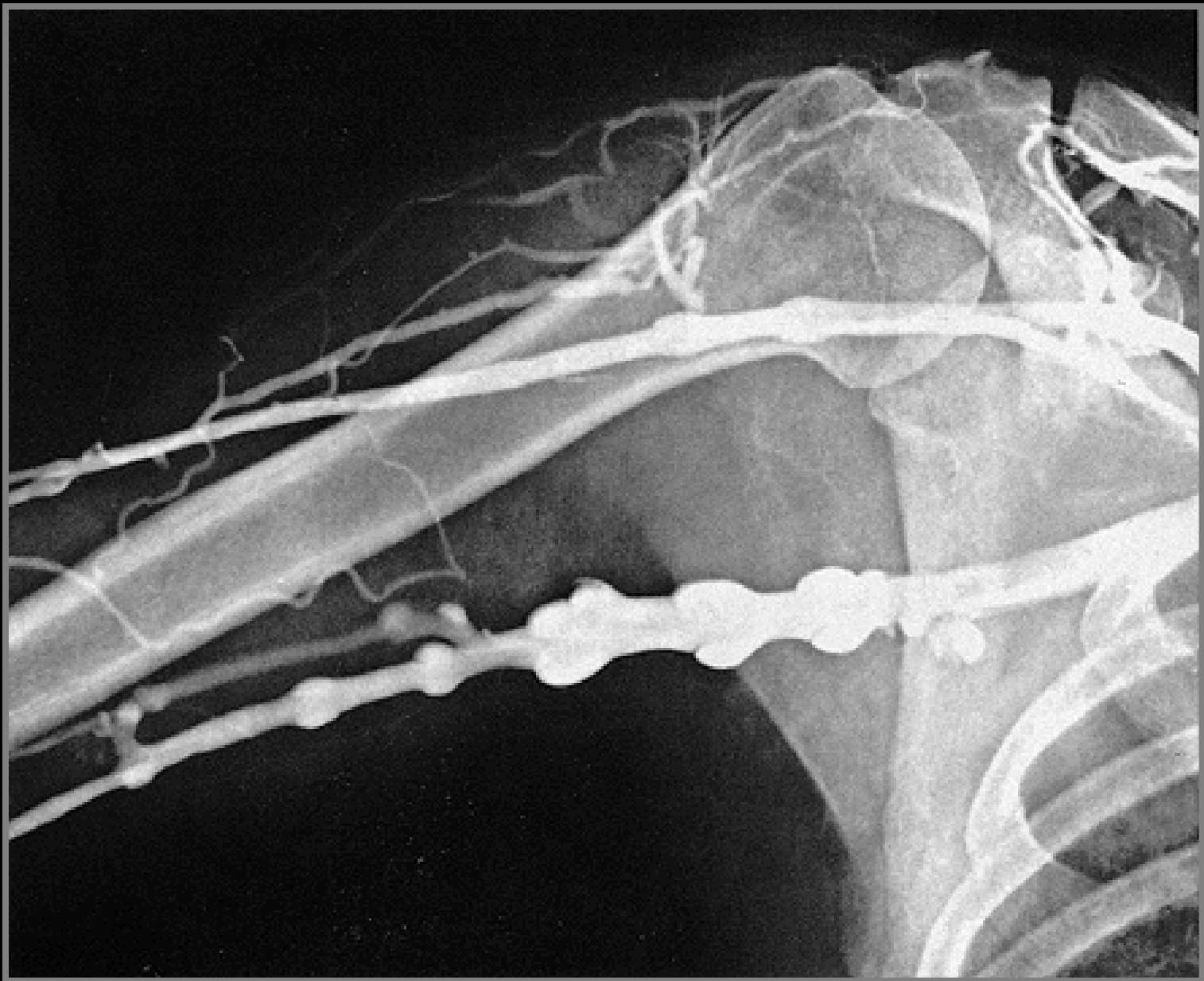


VERTEBRAL ANGIOGRAPHY



**VENOGRAPHY
(PHLEBOGRAPHY)**

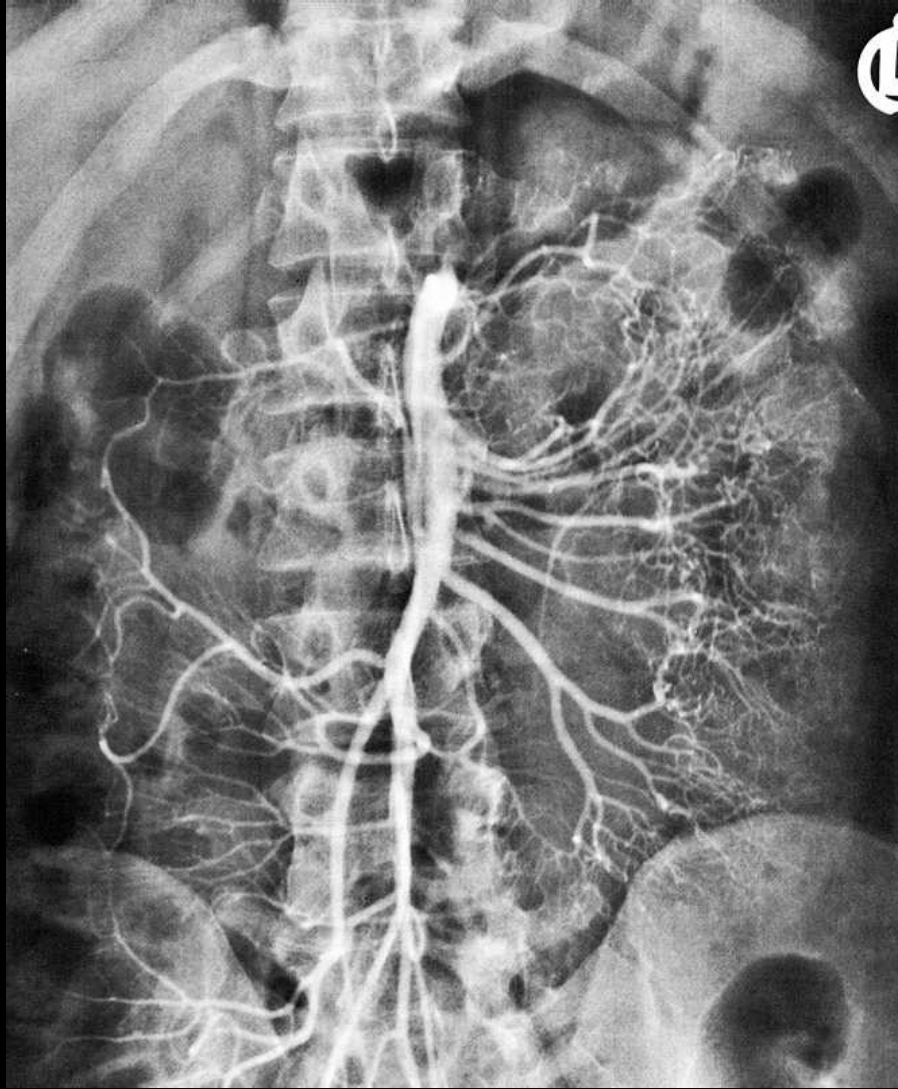




LYMPHOGRAPHY



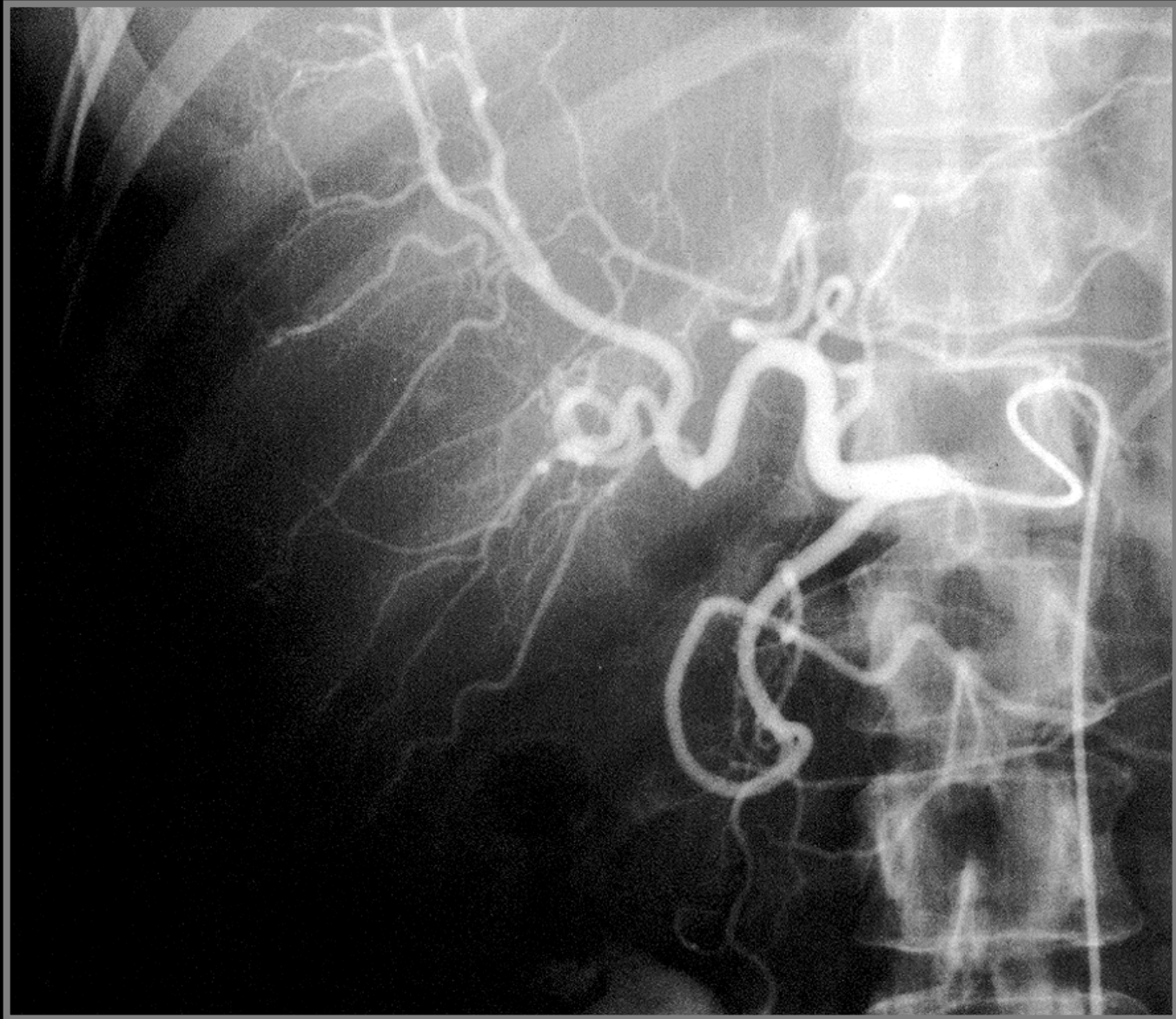
ANGIOGRAPHY



A. mesenterica superior

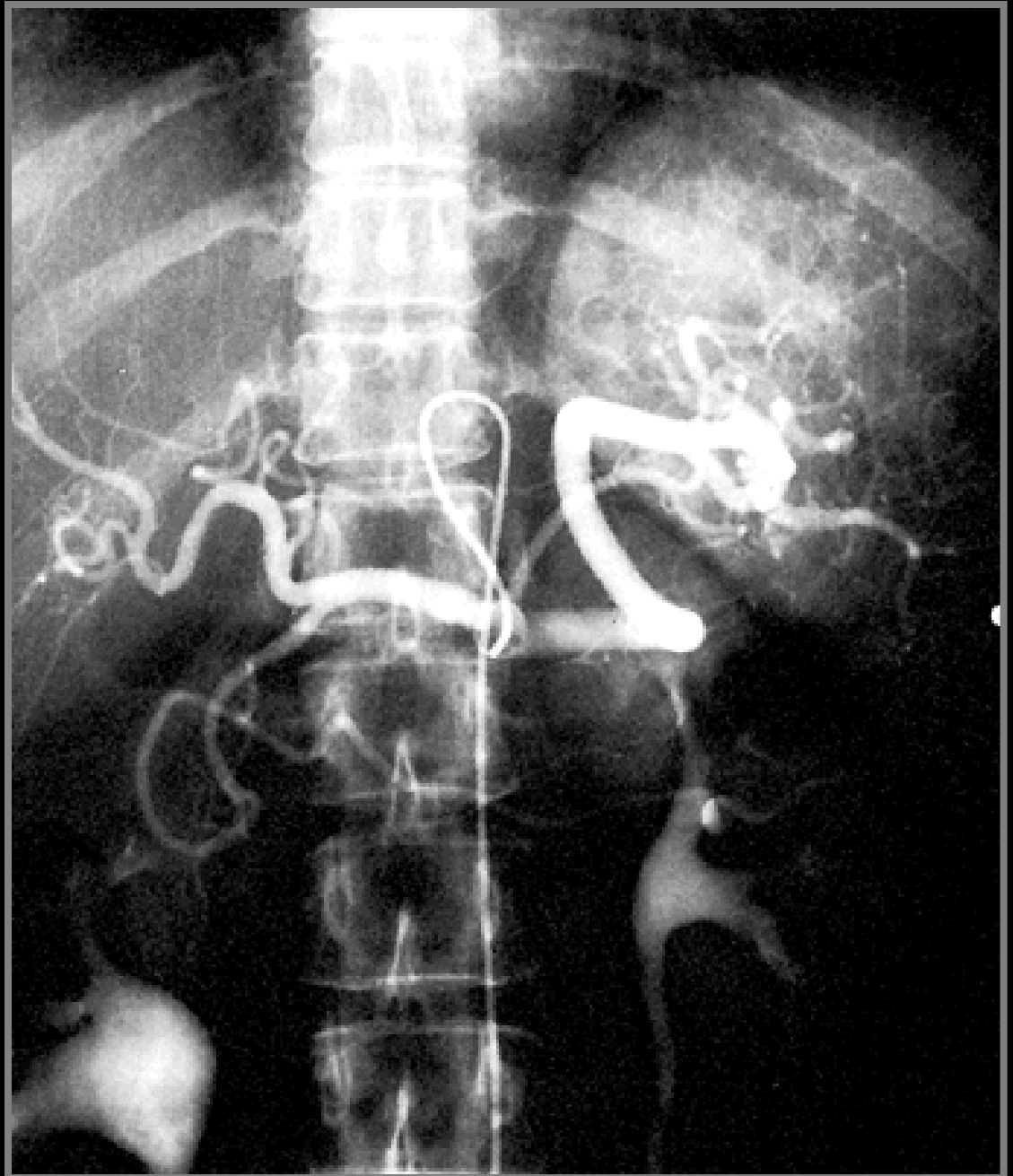
A. mesenterica inferior



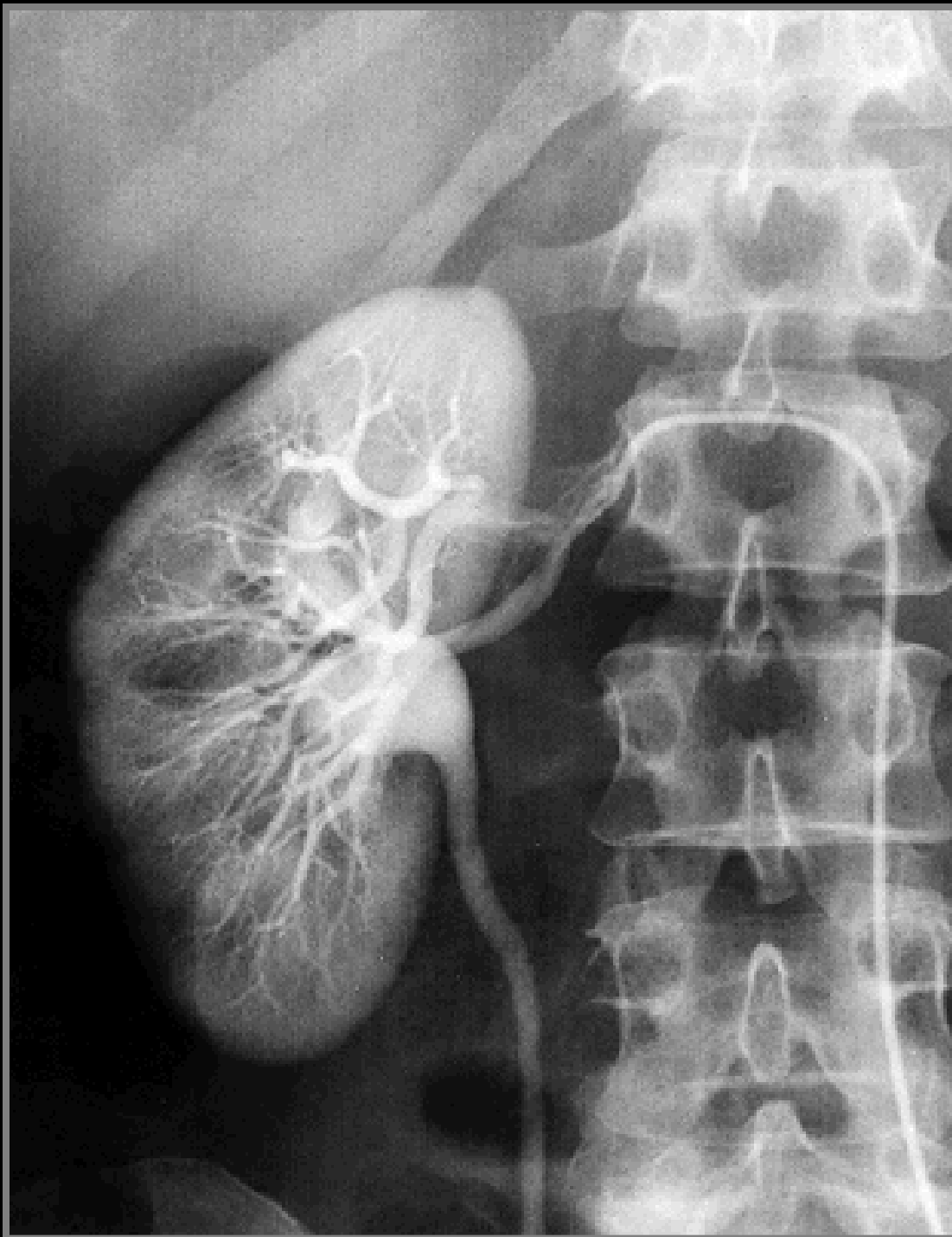


Common hepatic artery

TRUNCUS COELIACUS



A. RENALIS



AA. ILIACAE

