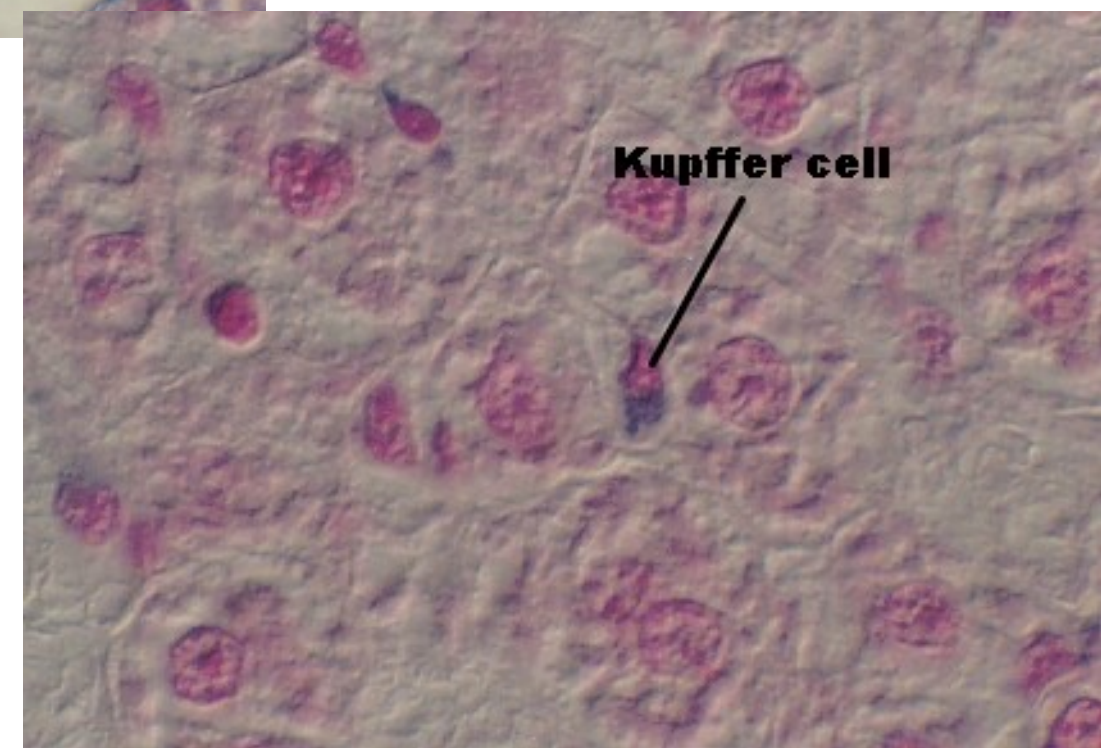
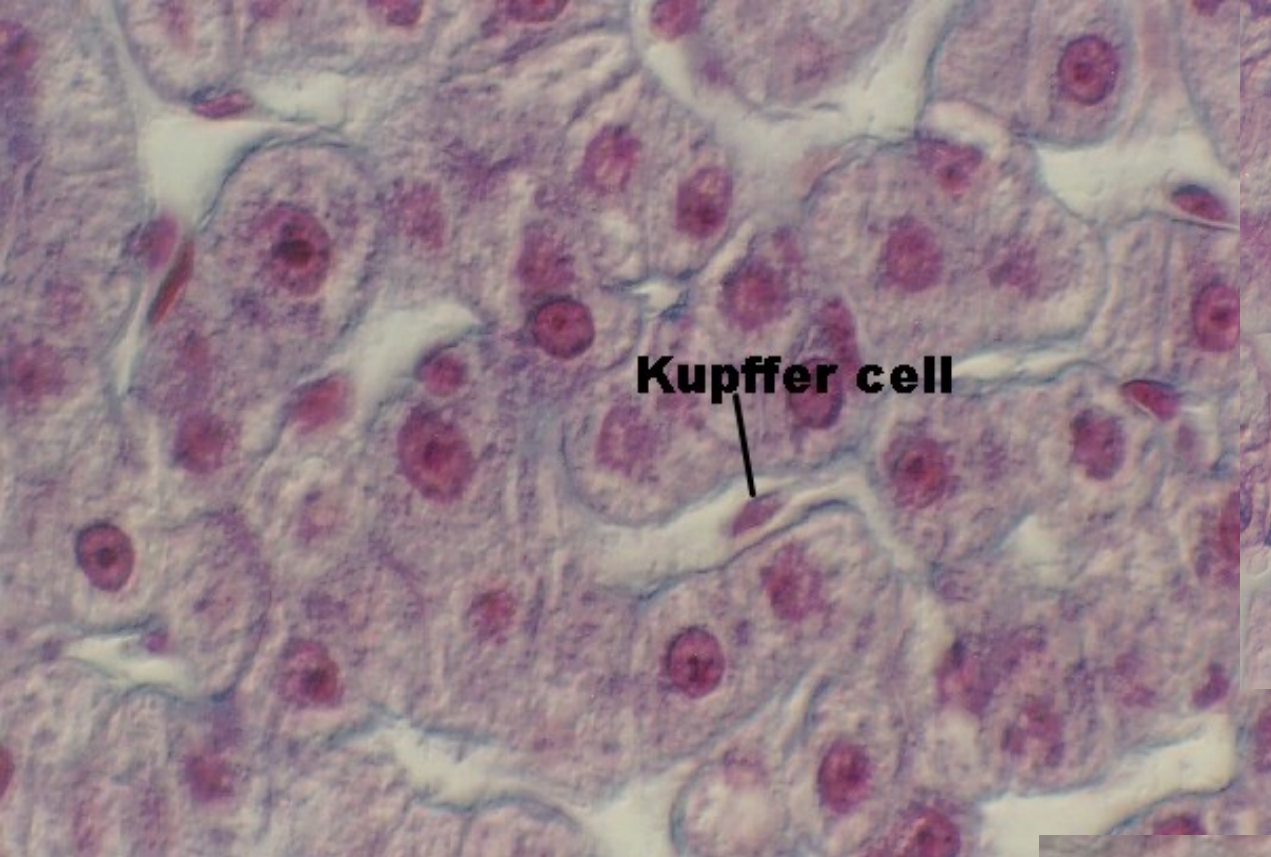
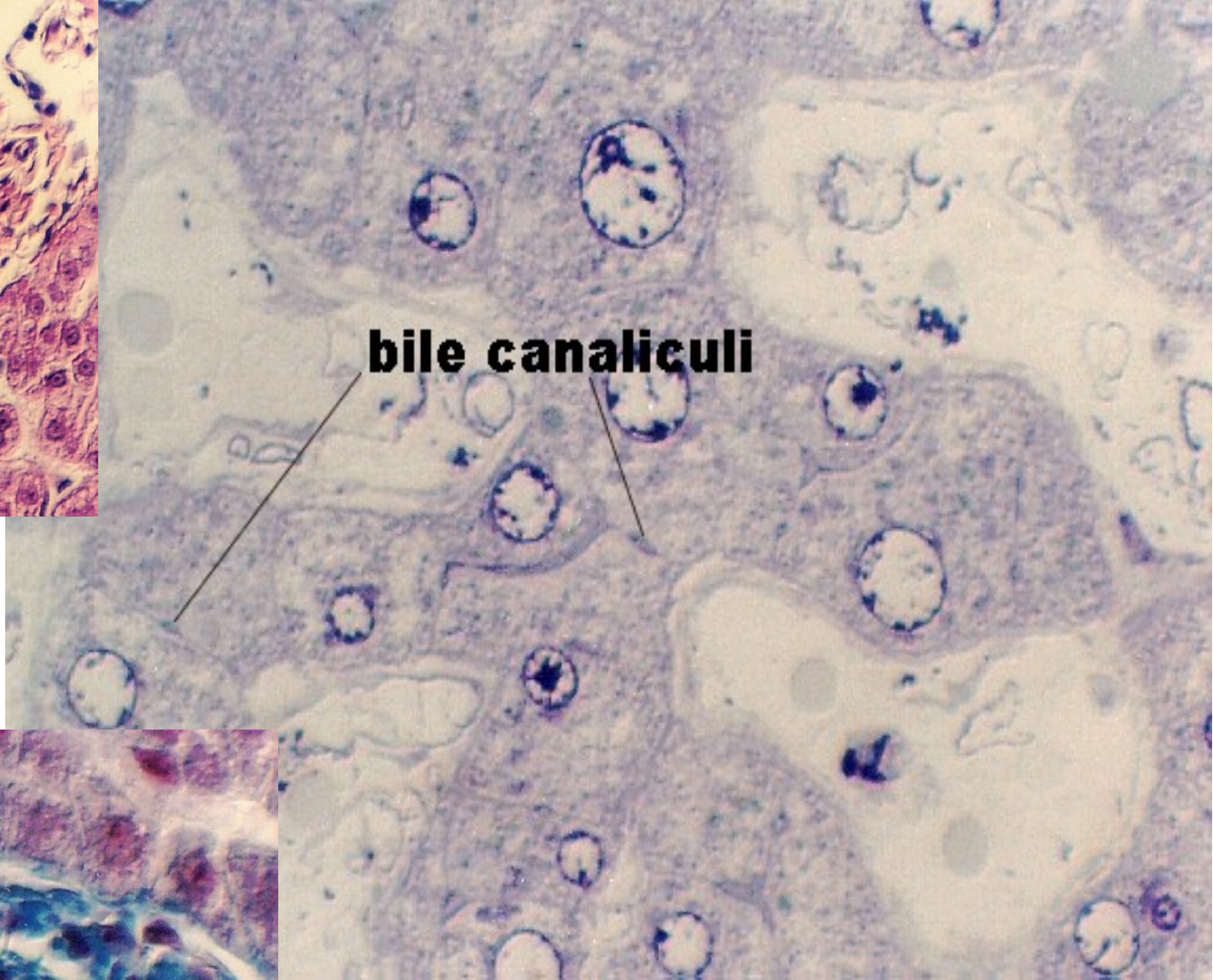
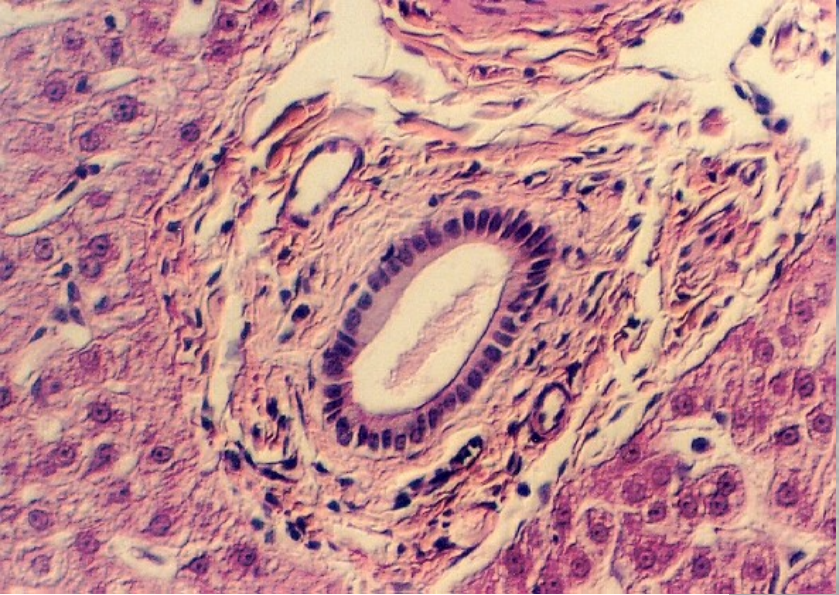
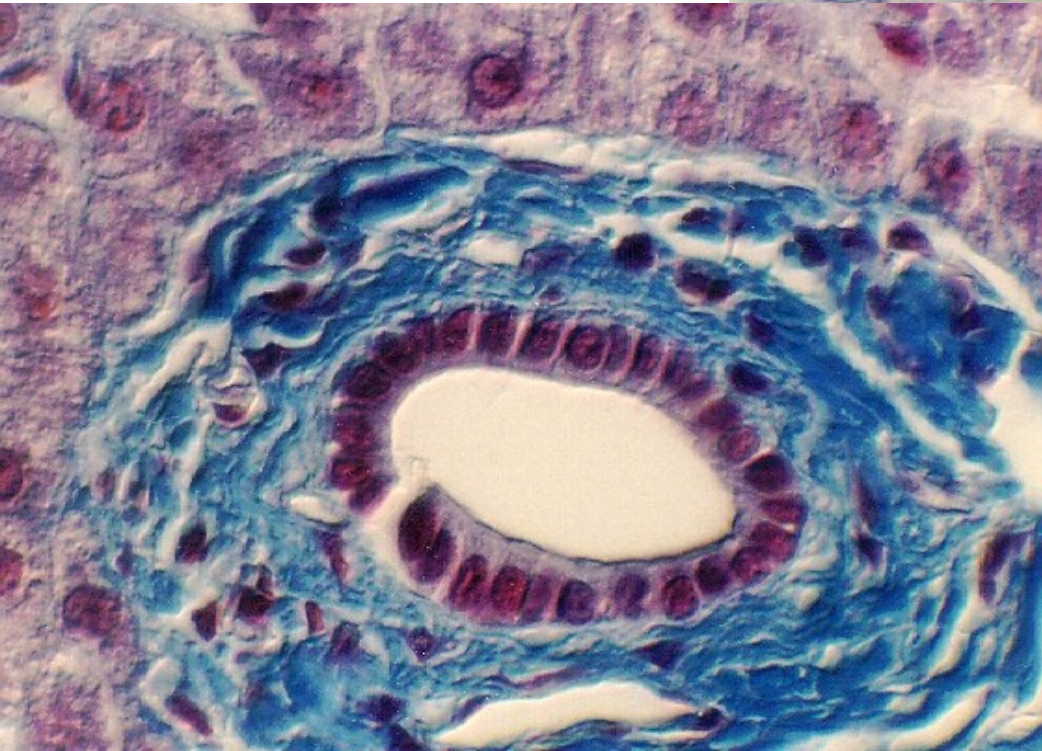


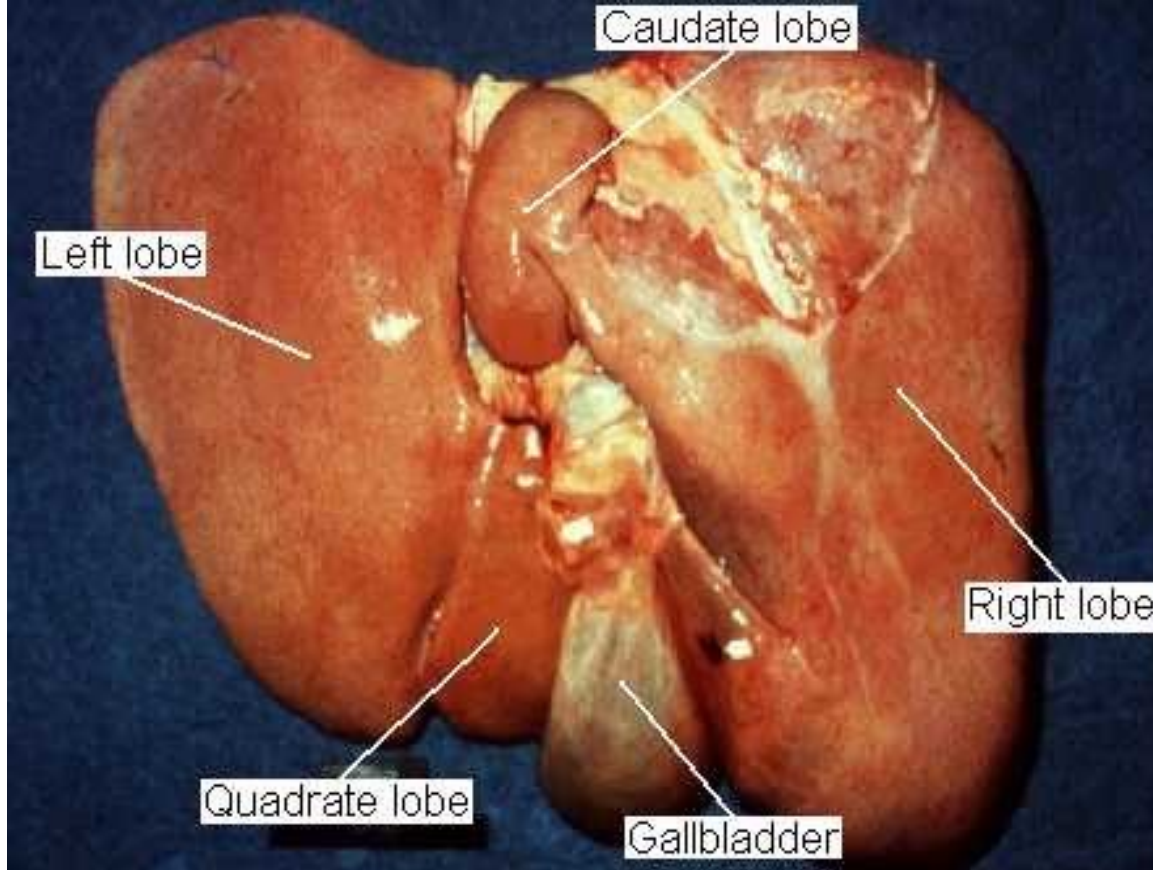
http://cellbio.utmb.edu/microanatomy/Digestive/Liver_and_pancreas.htm
(+ 2 následující slajdy)



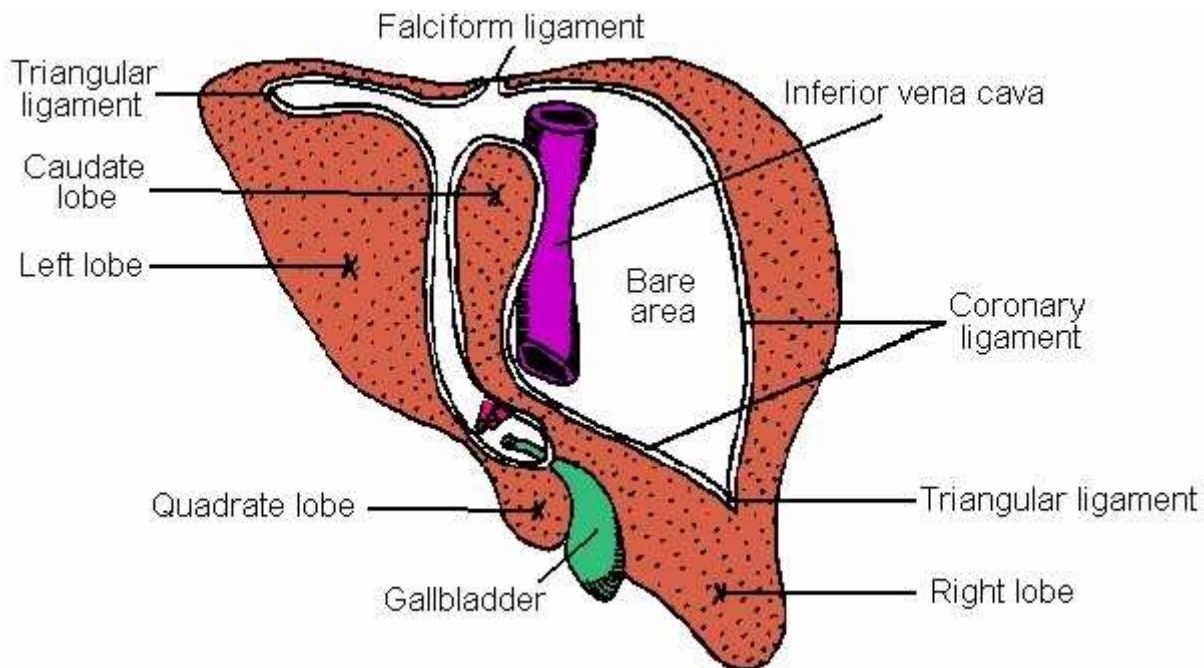


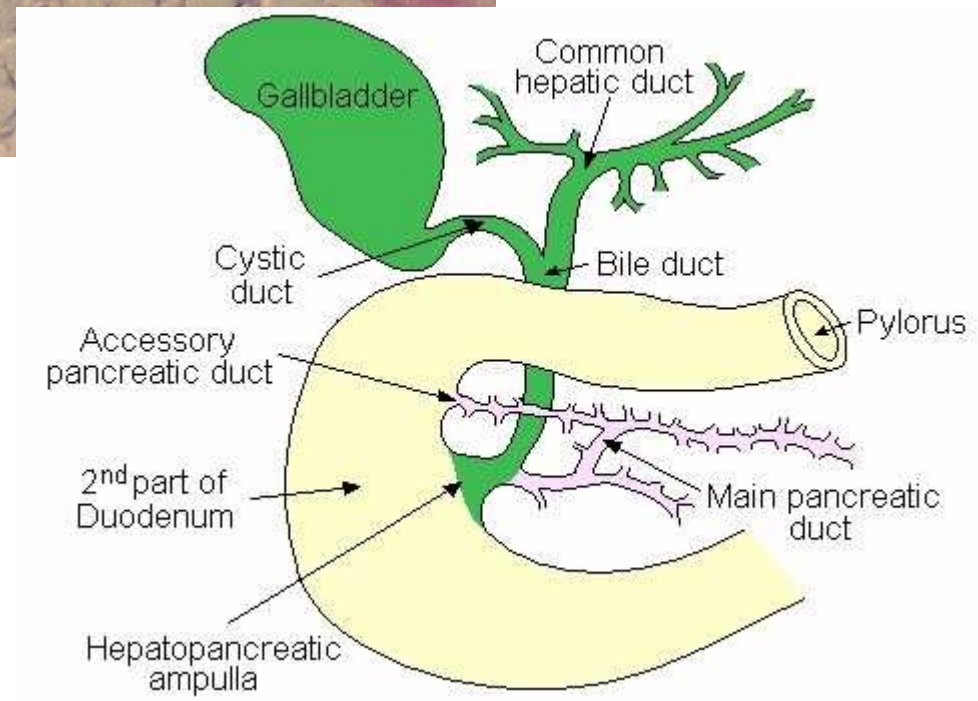
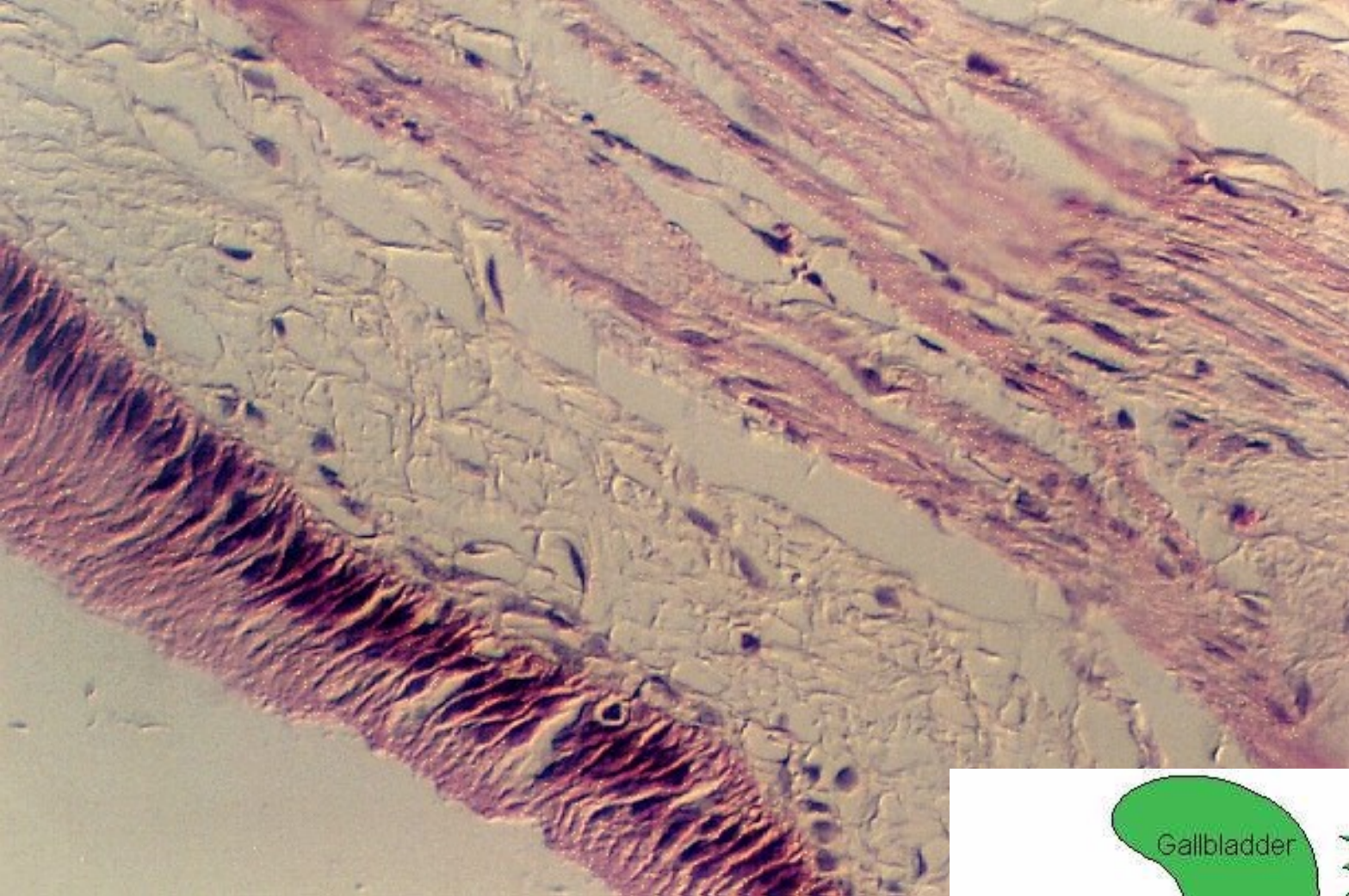
bile canaliculi



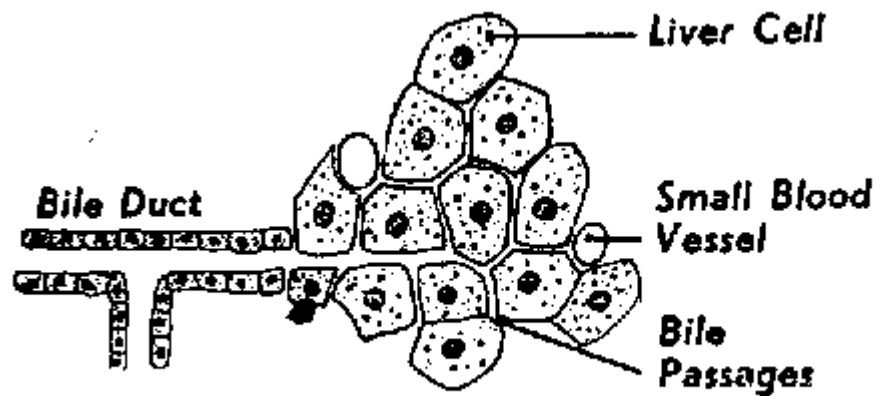


<http://137.222.110.150/calnet/git/page3.htm>

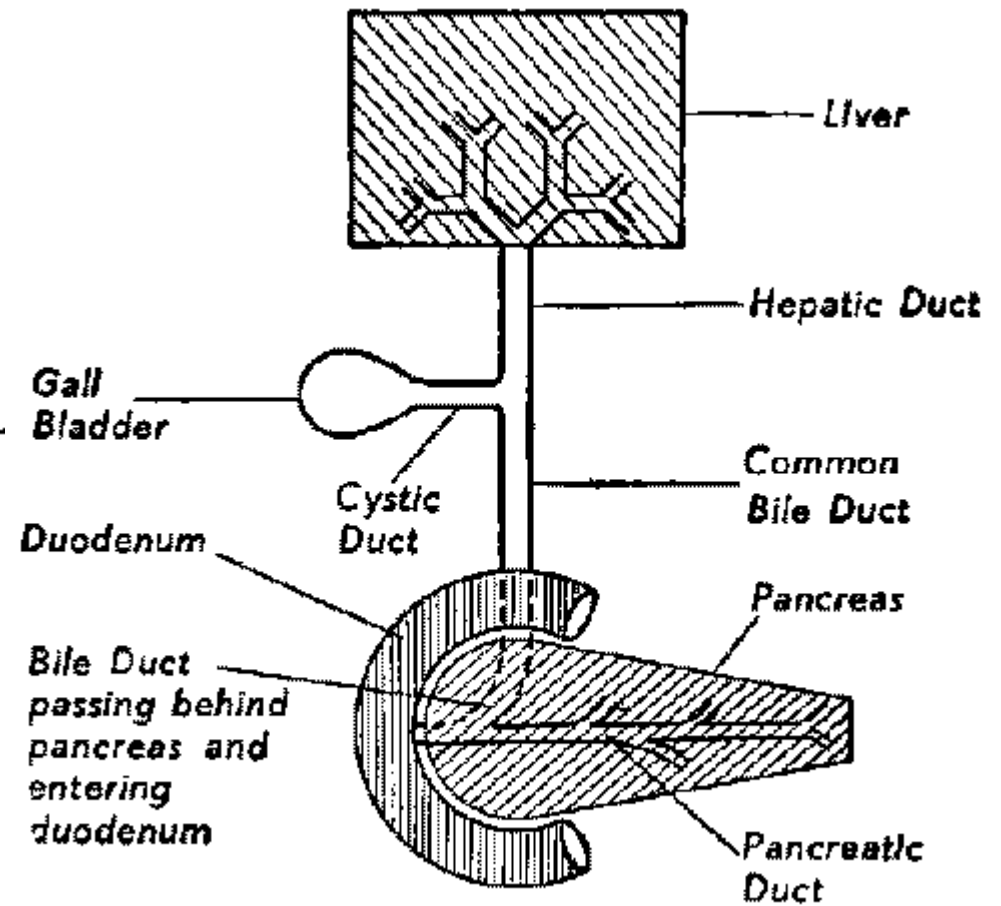




http://cellbio.utmb.edu/microanatomy/Digestive/Liver_and_pancreas.htm
<http://137.222.110.150/calnet/git/page3.htm#section4>



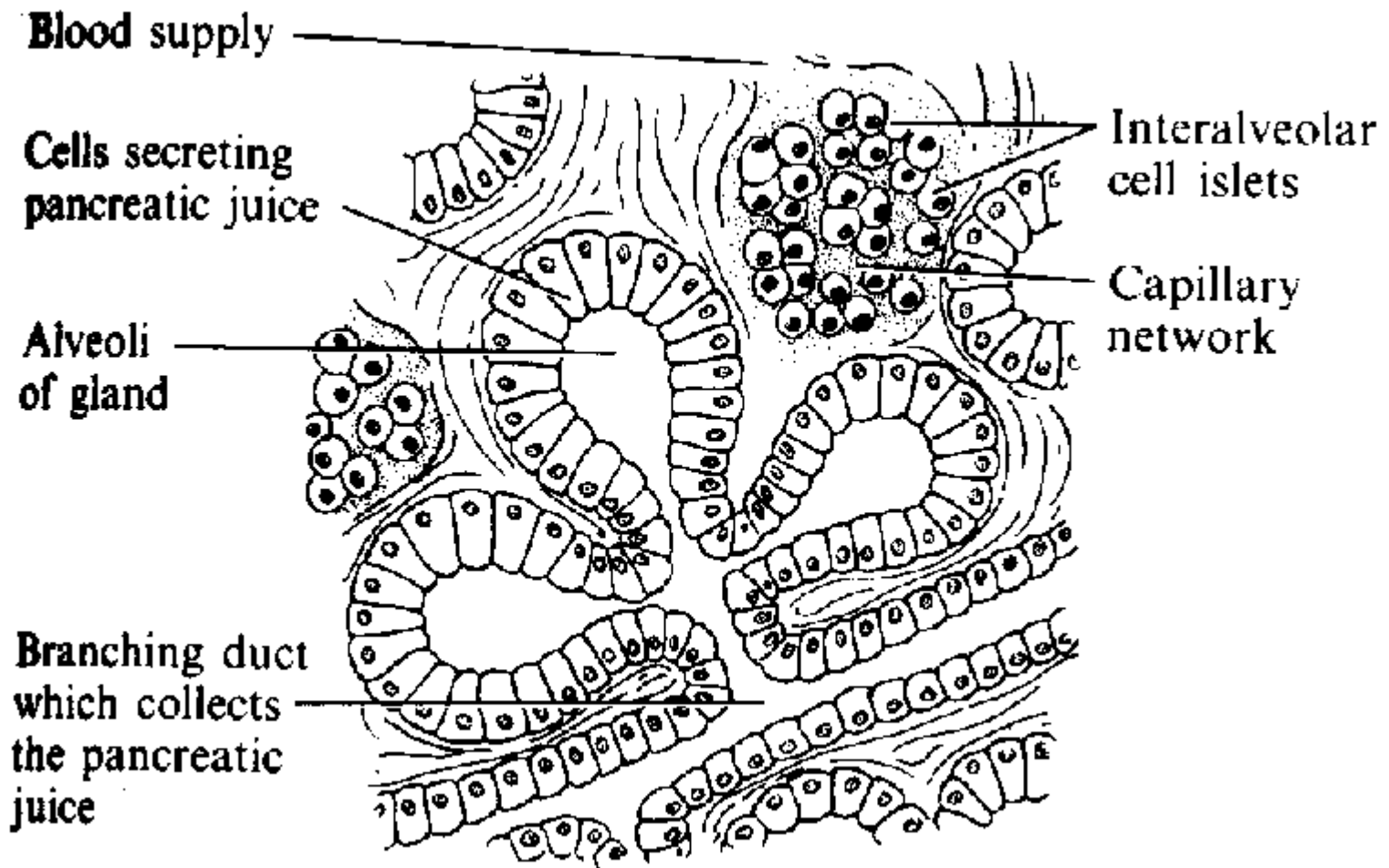
Termination of a Bile Duct at edge of L



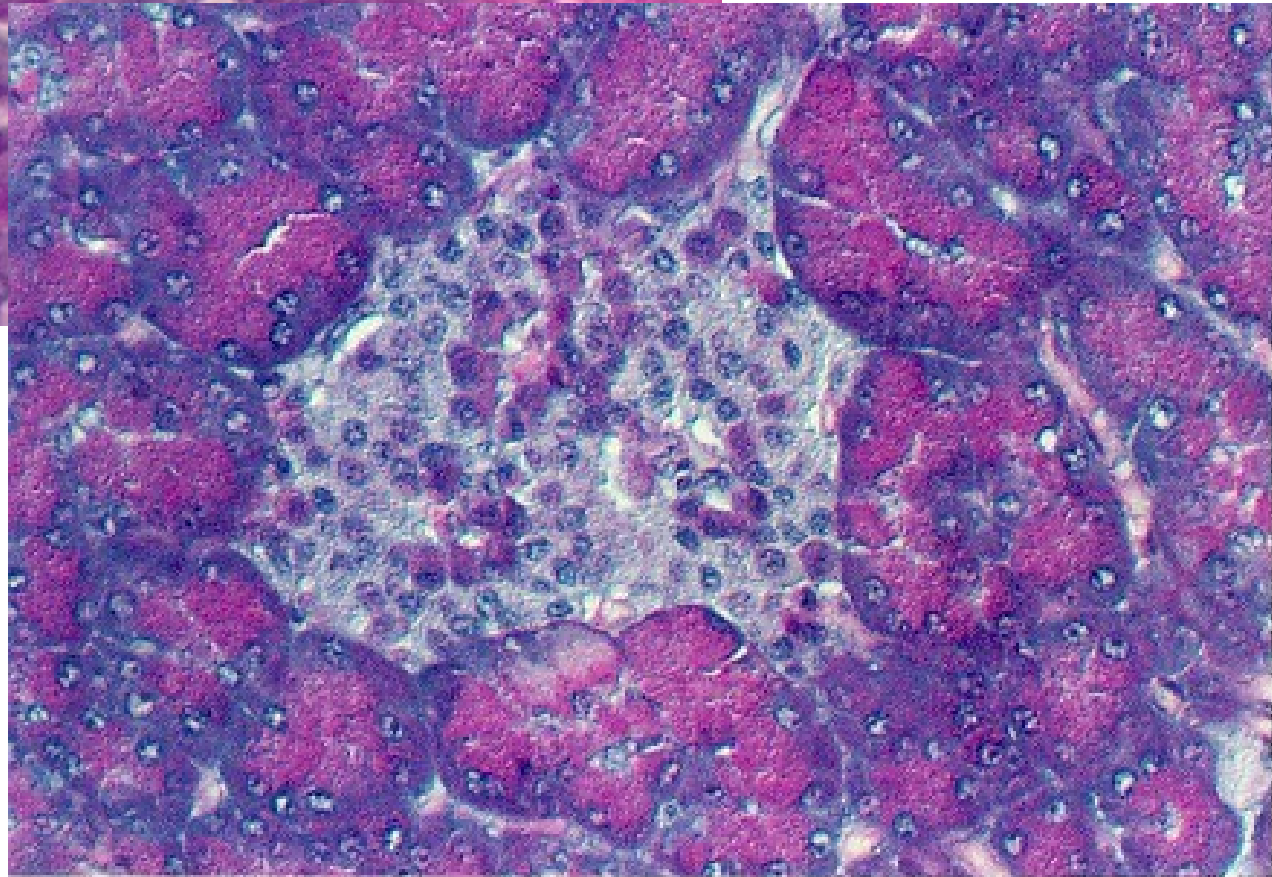
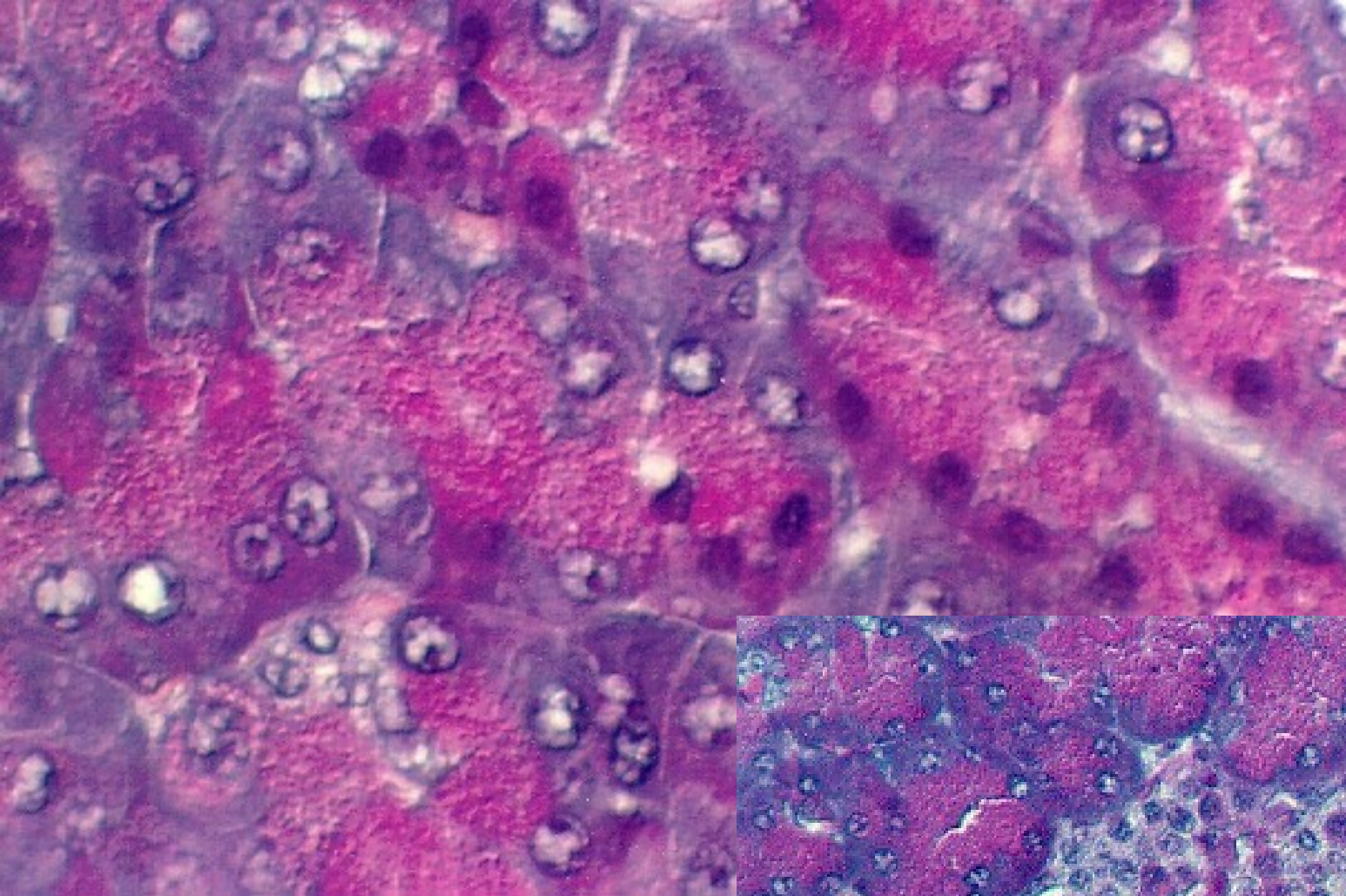
-Diagram illustrating the Biliary Apparatus.

<http://www.arthursclipart.com/medical/digesbw/bileduct.gif>

<http://www.arthursclipart.com/medical/digesbw/billiary.gif>



<http://www.arthursclipart.com/medical/digesbw/PANSREAS.gif>



[http://cellbio.utmb.edu/
microanatomy/Digestive/
Liver_and_pancreas.htm](http://cellbio.utmb.edu/microanatomy/Digestive/Liver_and_pancreas.htm)