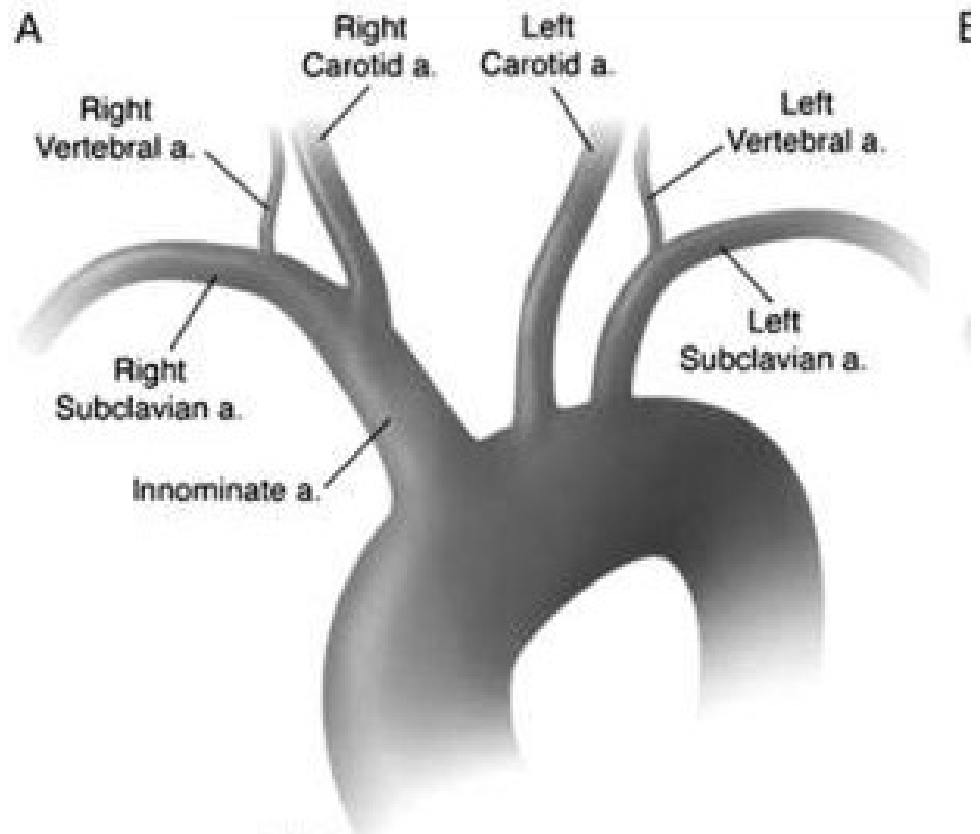
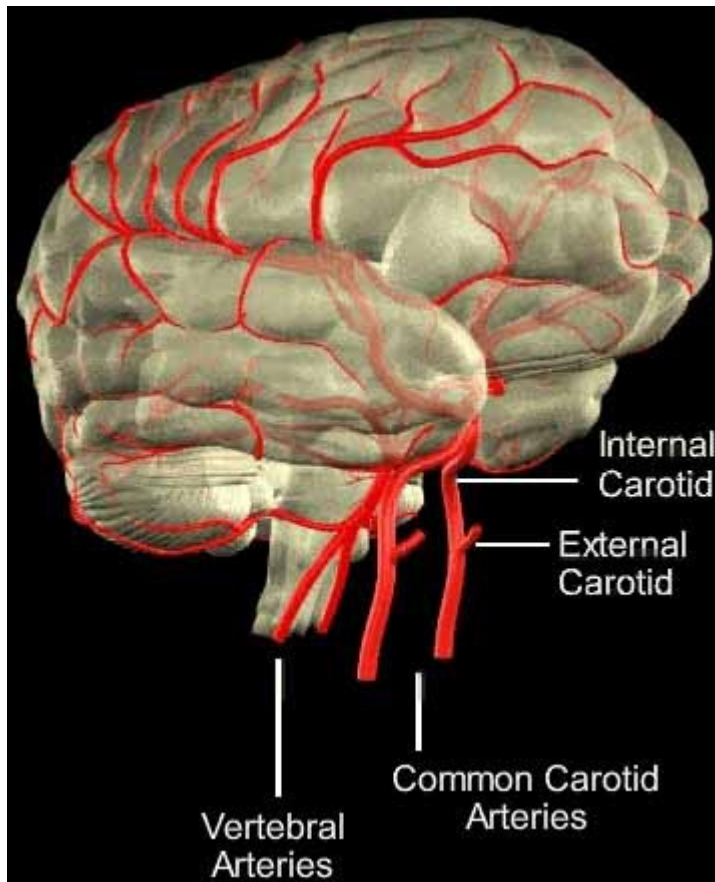


Cévní zásobení mozku

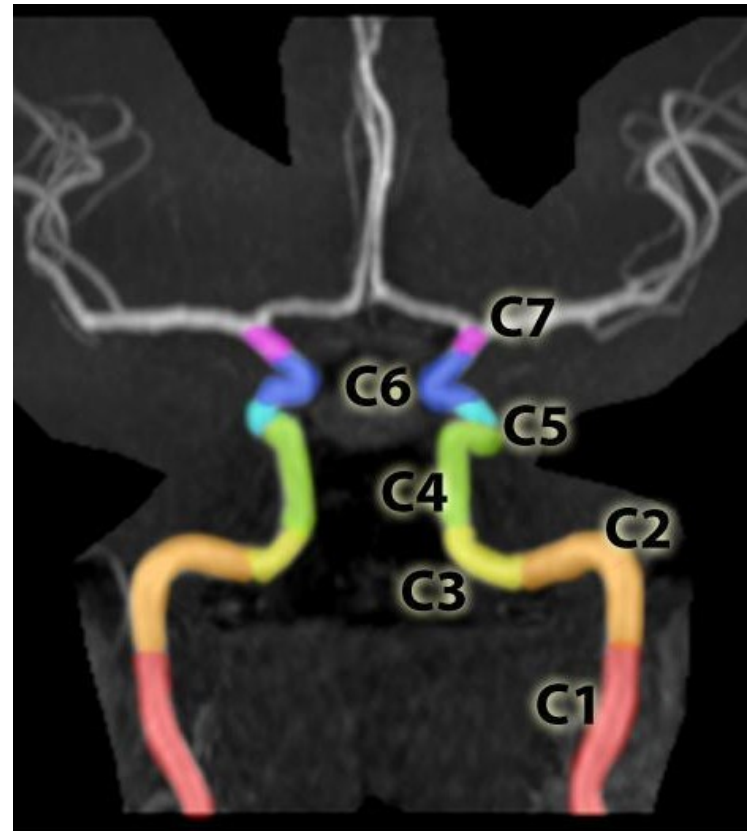
Petrášová Hana

Magistrální mozkové tepny



ACI

- **Cervical segment, or C1** - none
- **Petrous segment, or C2** - Caroticotympanic arteries, Artery of pterygoid canal
- **Lacerum segment, or C3** - none
- **Cavernous segment, or C4** - Tentorial basal branch, Tentorial marginal branch, Meningeal branch - helps supply blood to the meninges of the anterior cranial fossa, Clivus branches - tiny branches that supply the clivus, Inferior hypophyseal artery, Capsular branches - supplies wall of cavernous sinus, Branches to trigeminal ganglion - provide blood to trigeminal ganglion, Artery of the foramen rotundum, Branches to nerves
- **Clinoid segment, or C5** - none
- **Ophthalmic, or C6** - Ophthalmic artery, Superior hypophyseal artery
- **Communicating, or C7** - Posterior communicating artery, Anterior choroidal artery, Anterior cerebral artery, Middle cerebral artery



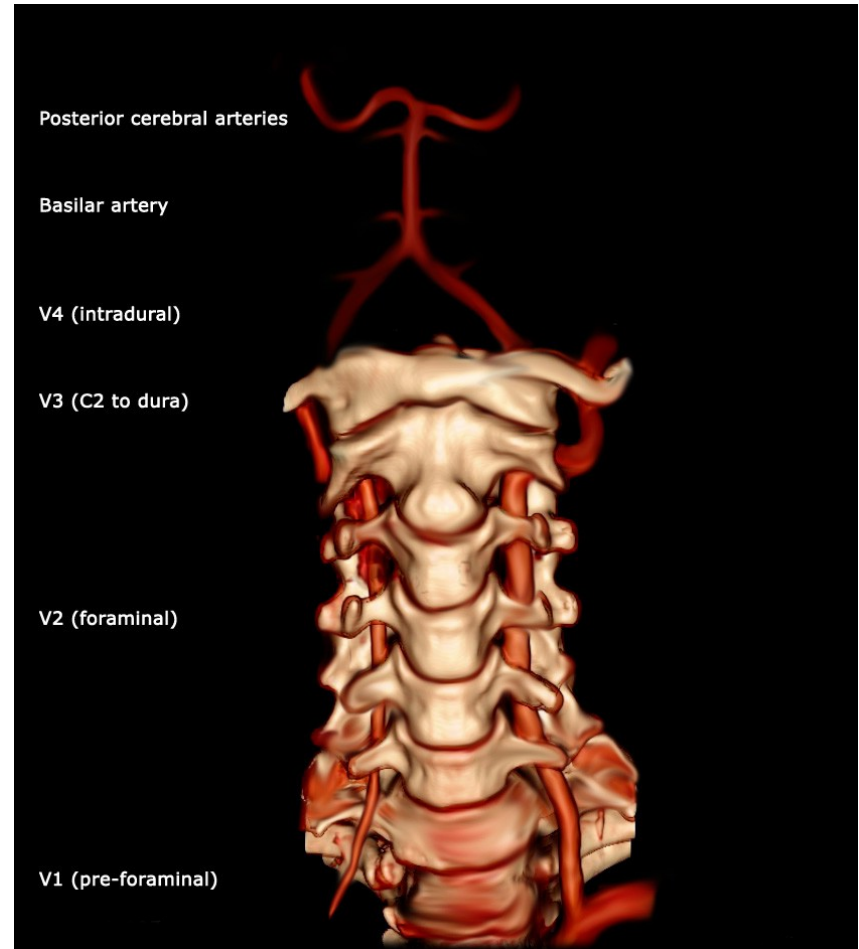
AV

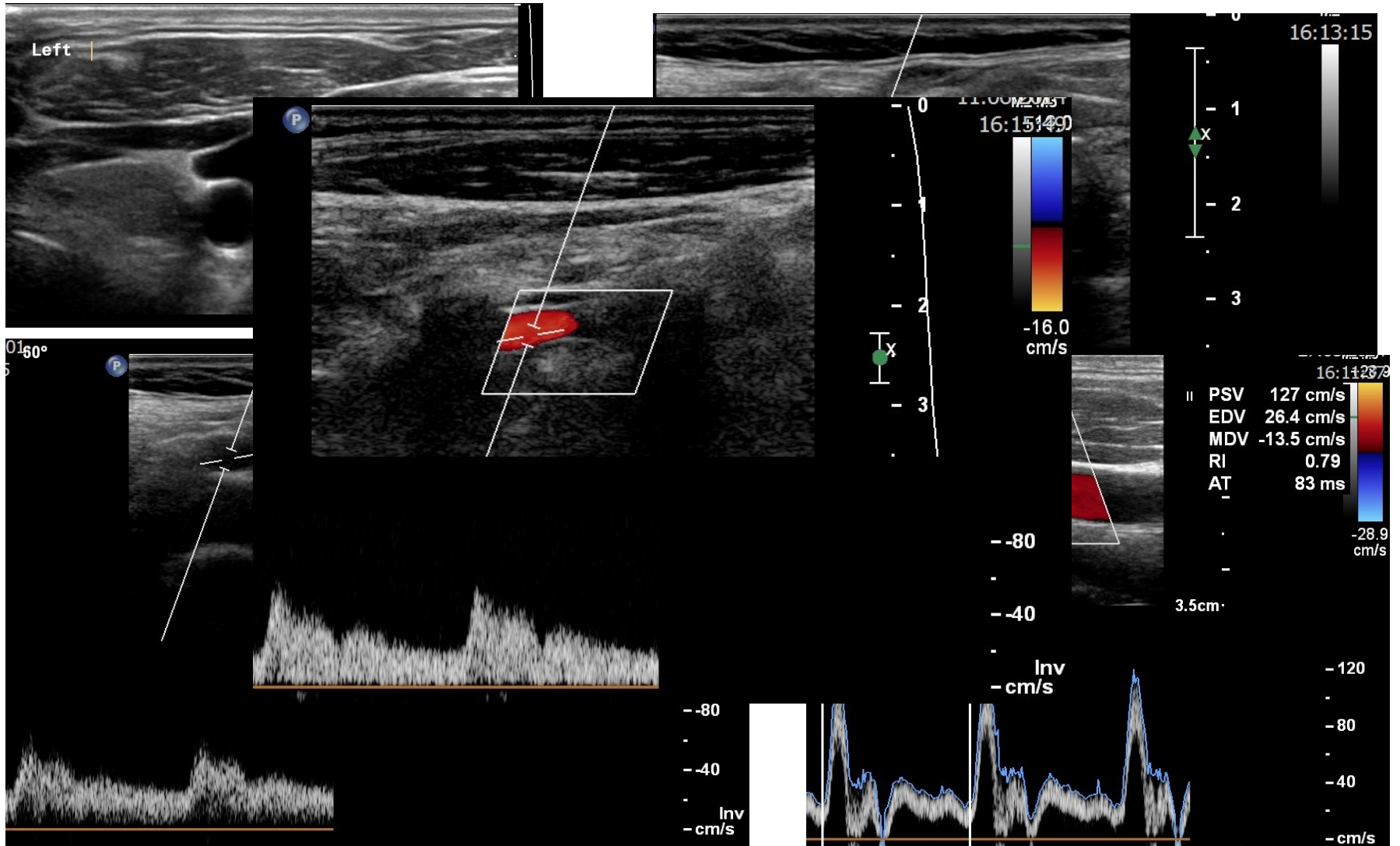
First part- V1

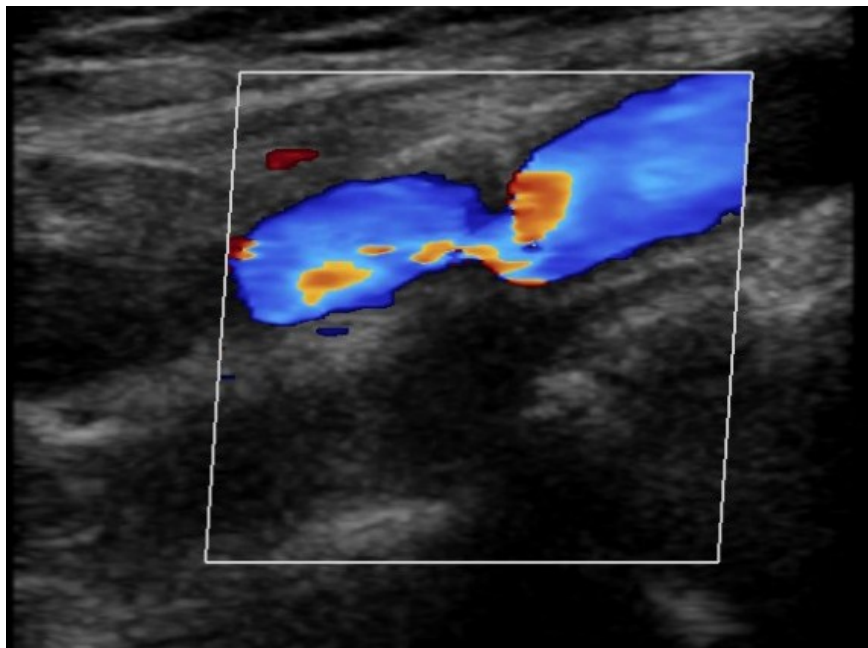
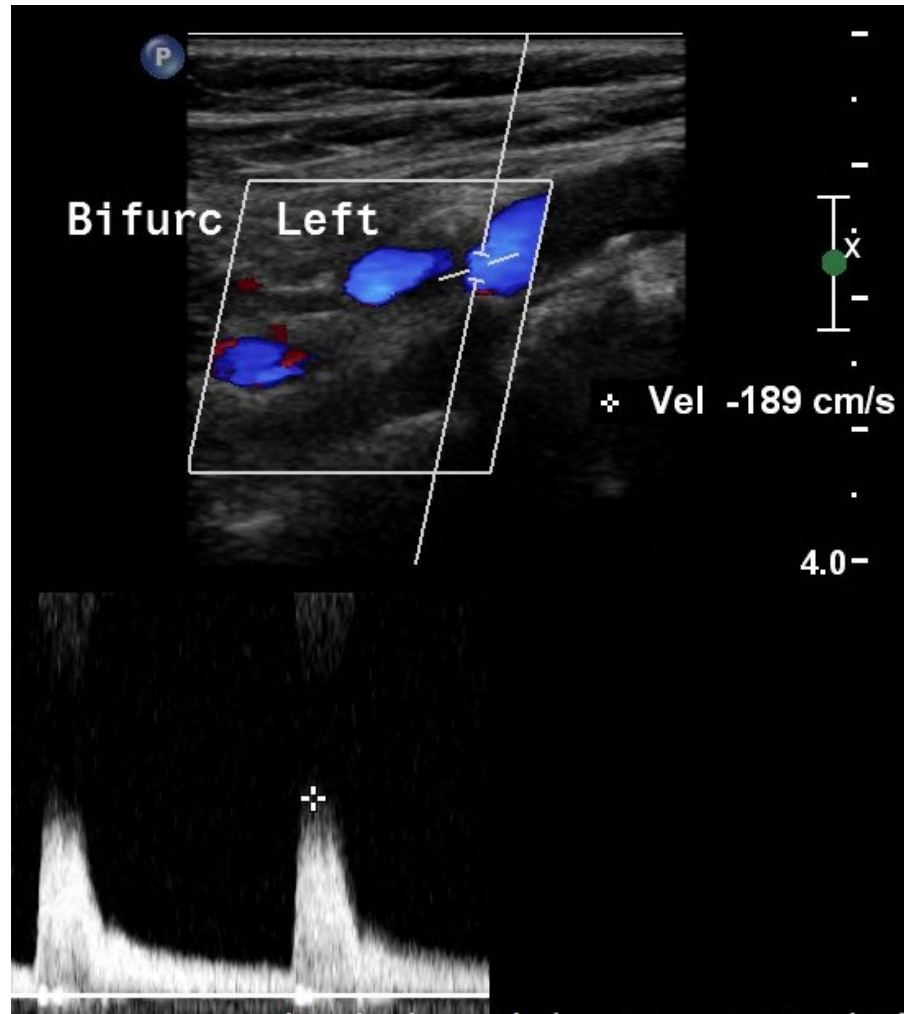
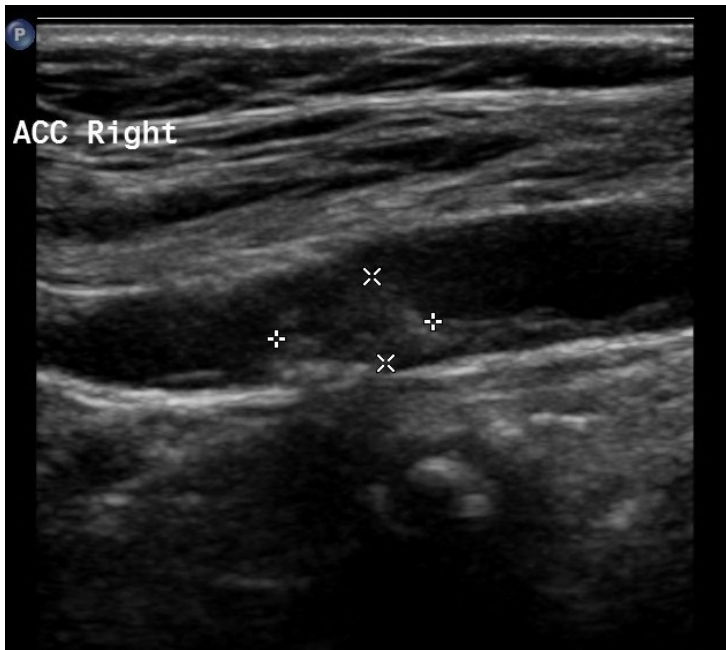
Second part- V2 through the [foramina](#) in the [transverse processes](#) of the C6 to C2 vertebrae

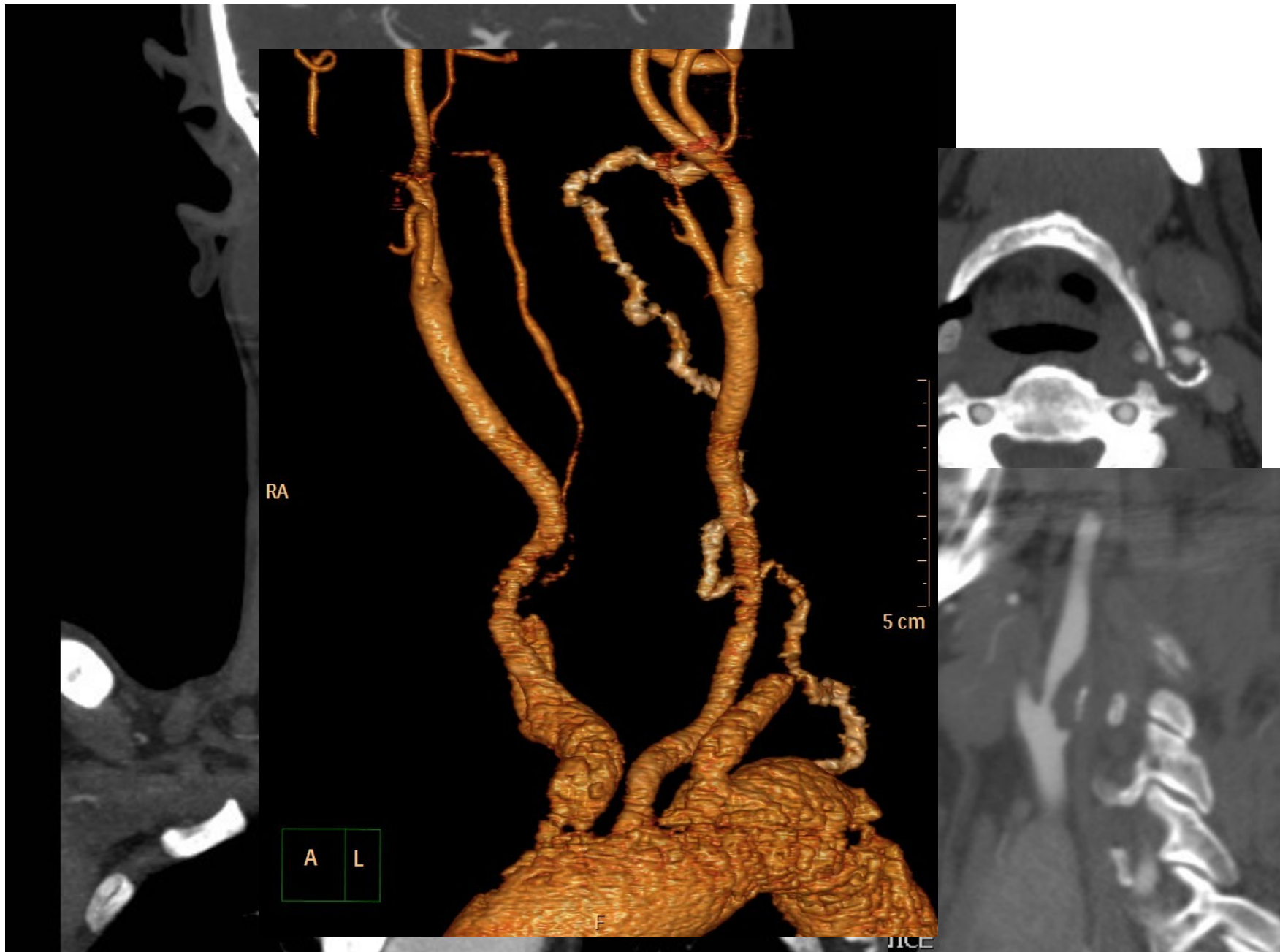
Third part- V3 from the C2 foramen transversarium, entering the foramen transversarium of C1, behind the superior articular process of the atlas and enters the vertebral canal.

Fourth part- V4 intradural

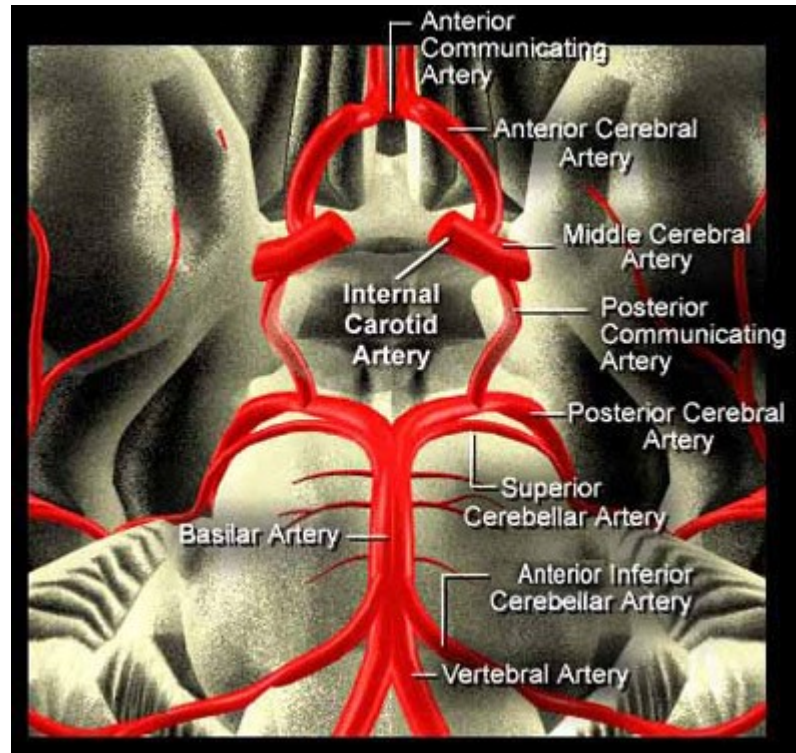




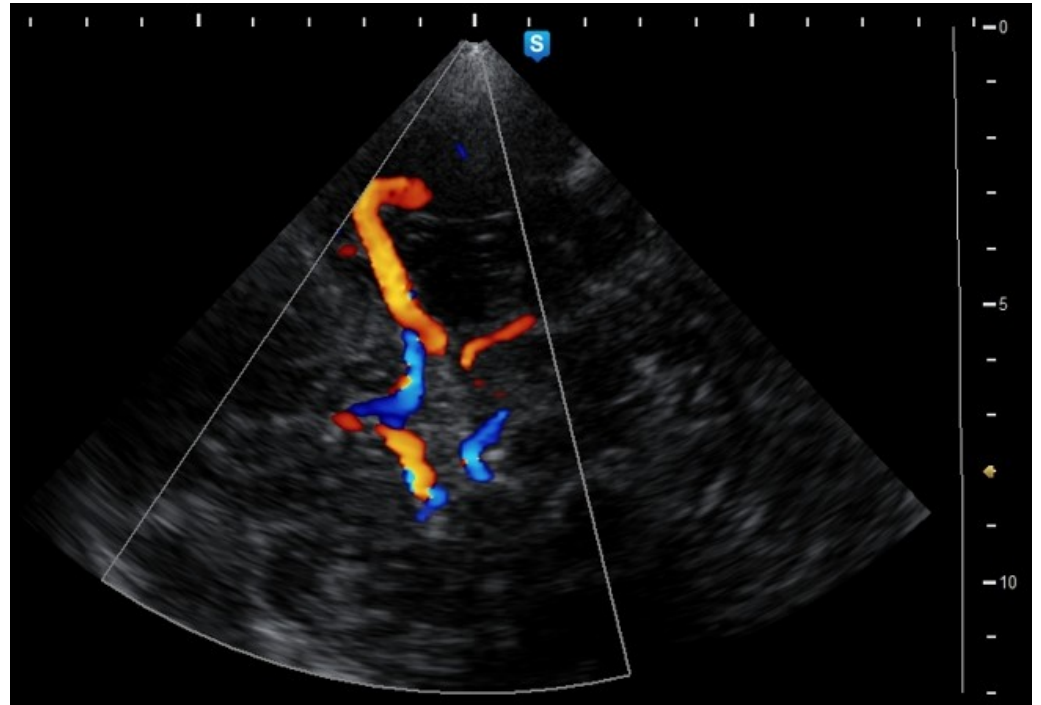
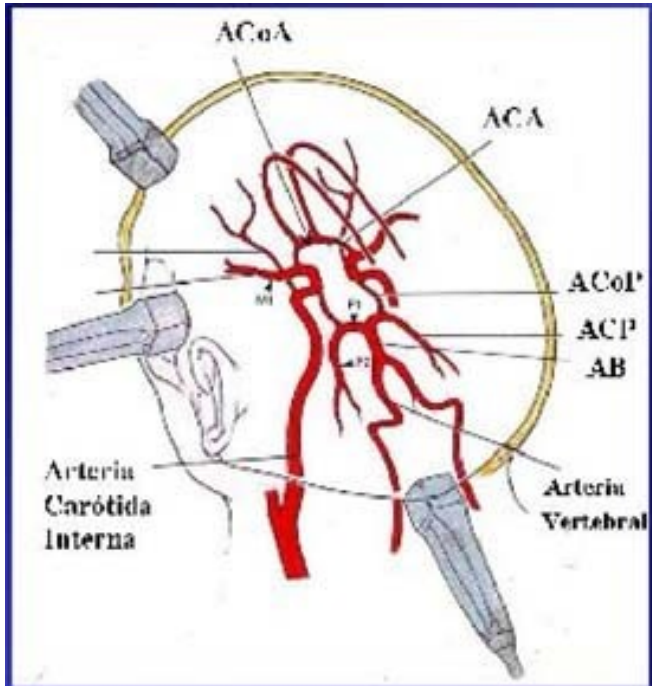


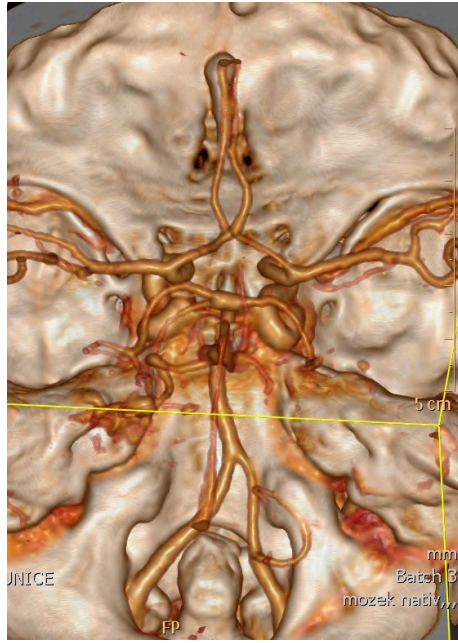
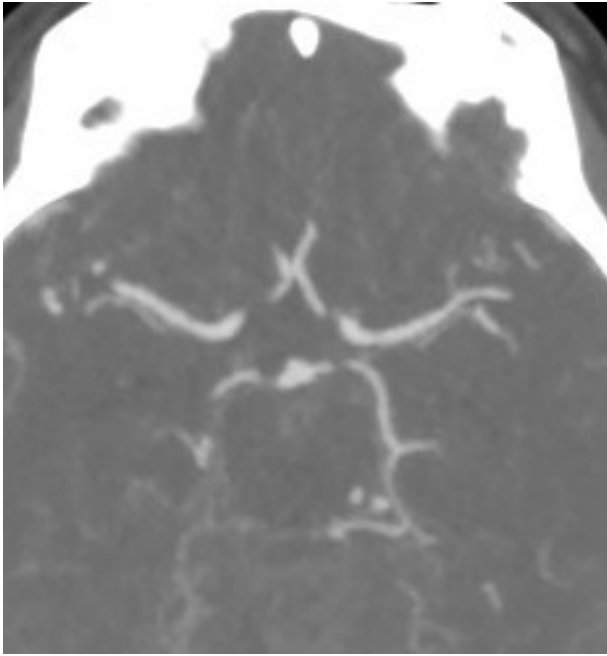


Willisův okruh

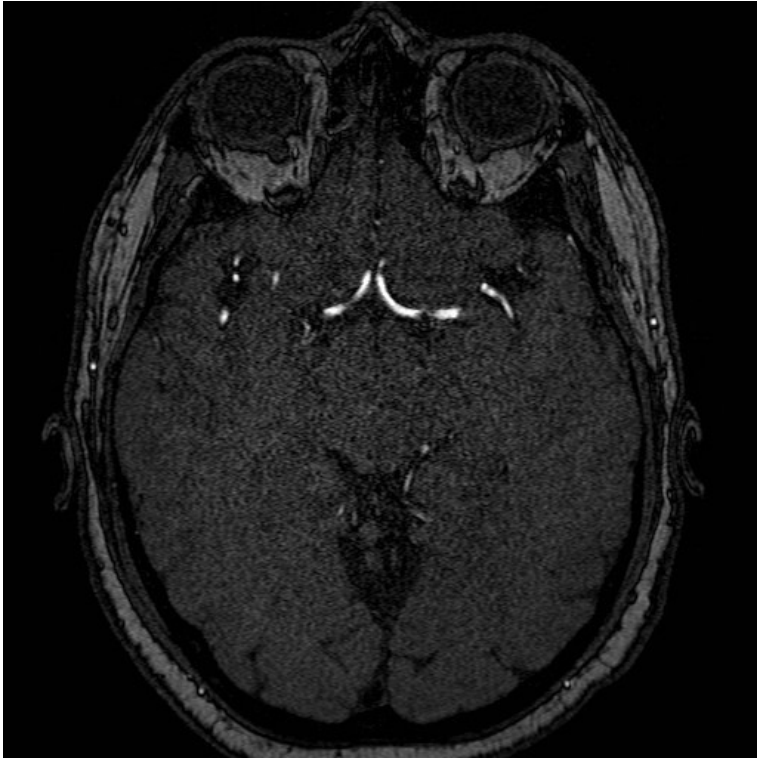


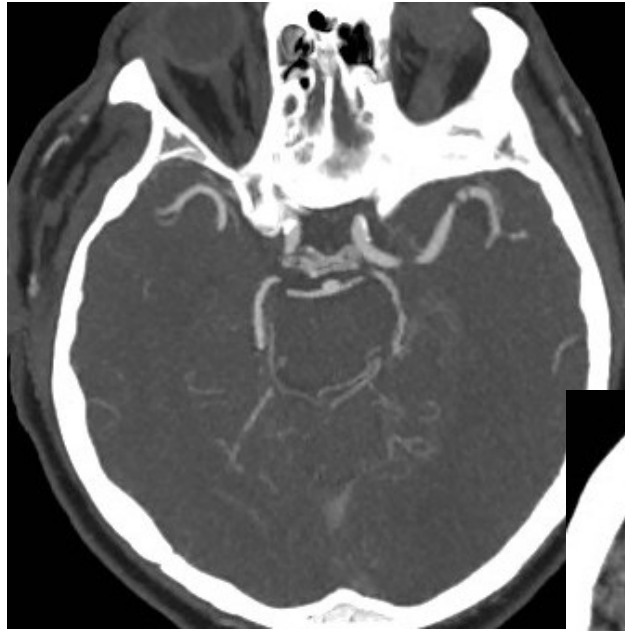
TCD

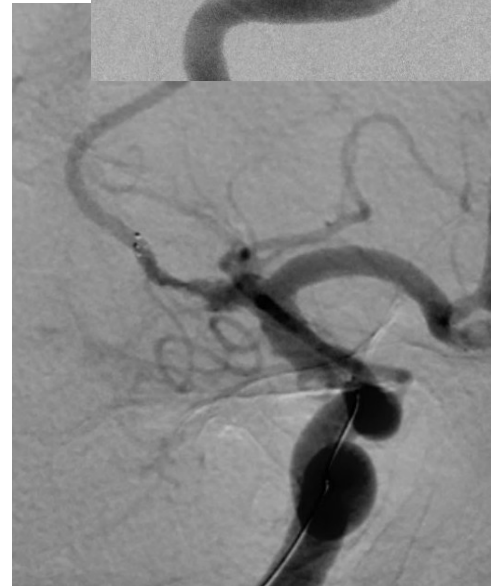
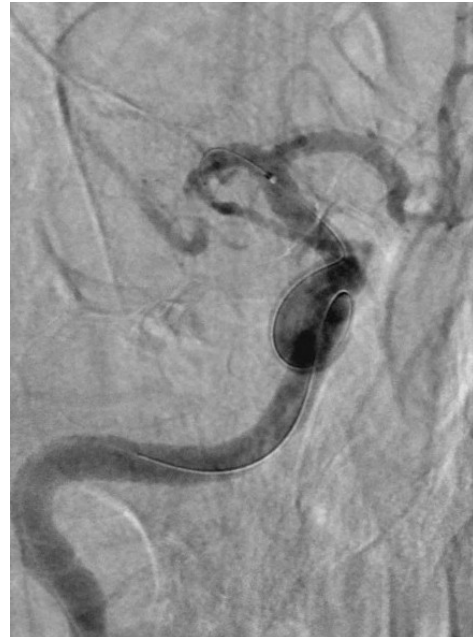
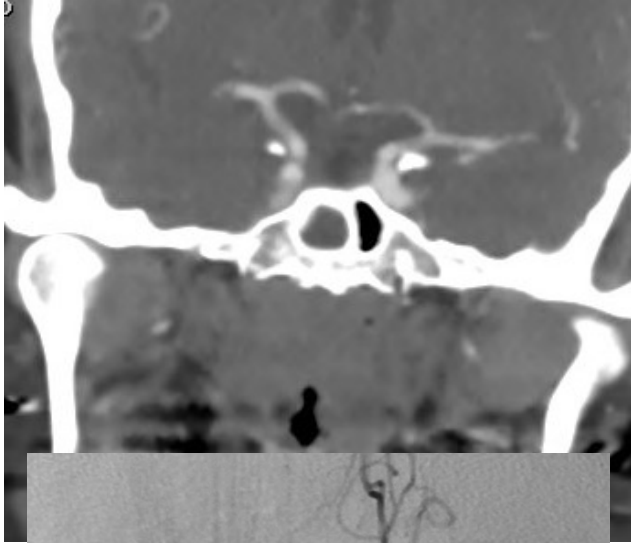


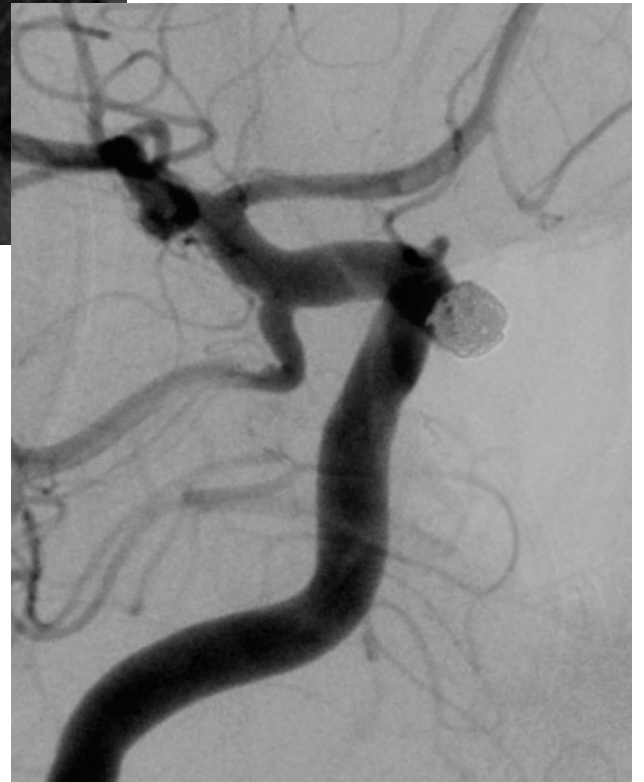
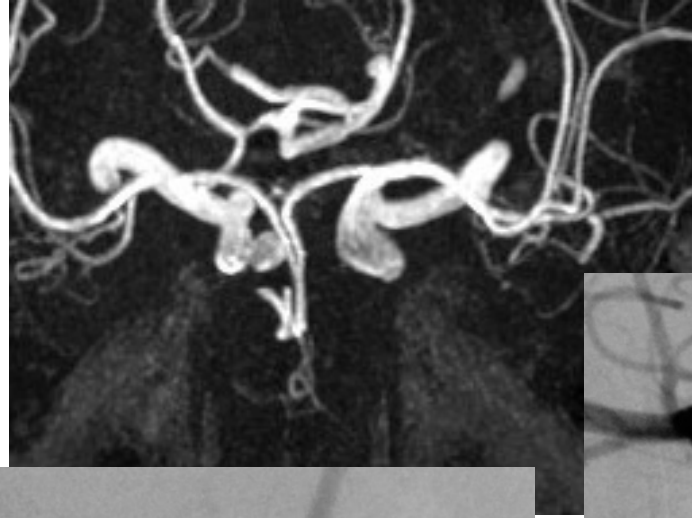


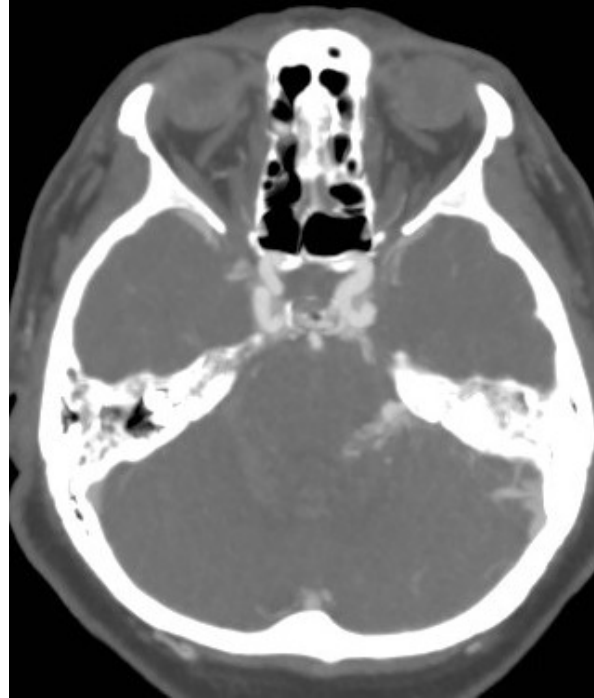
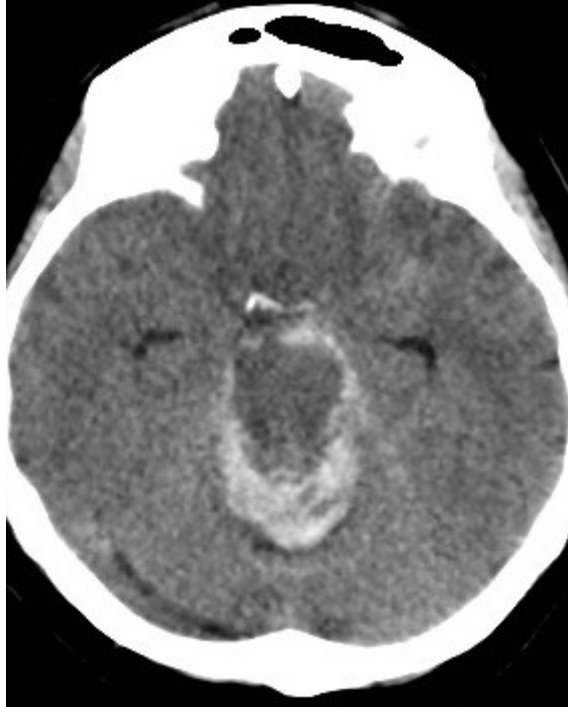
MRAG



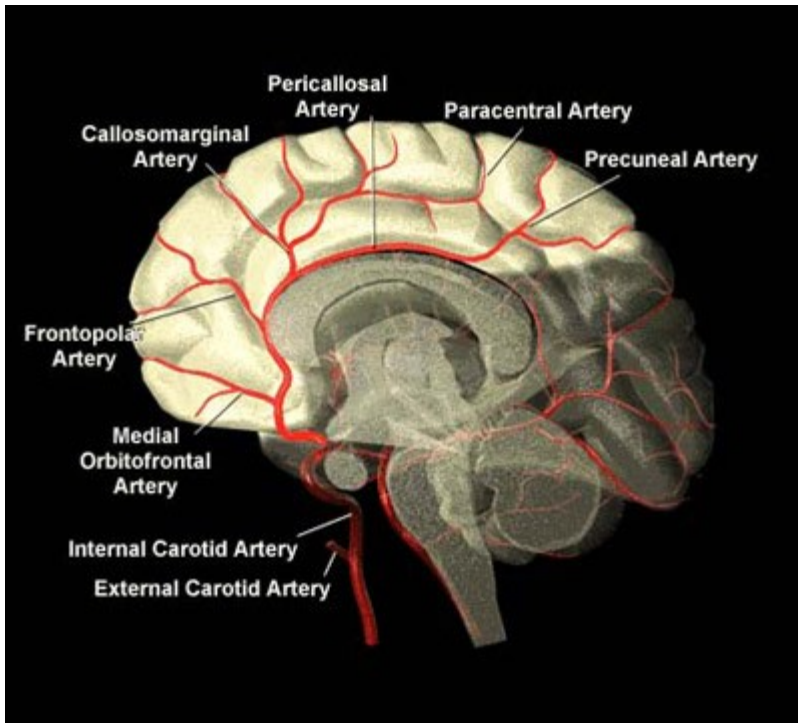




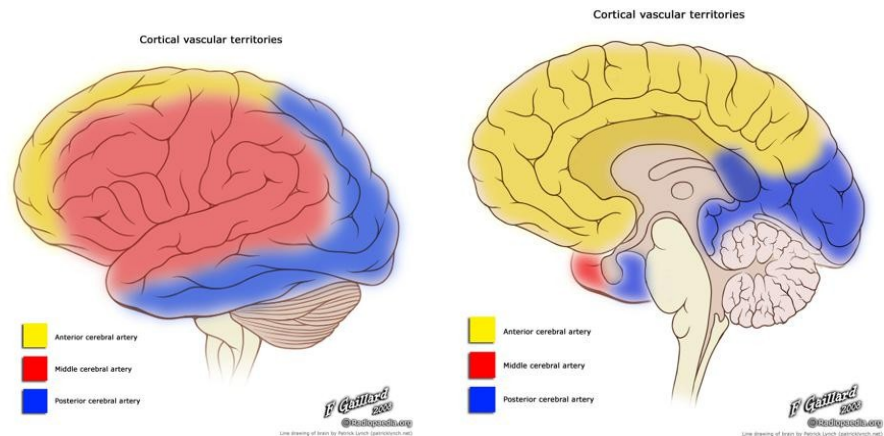




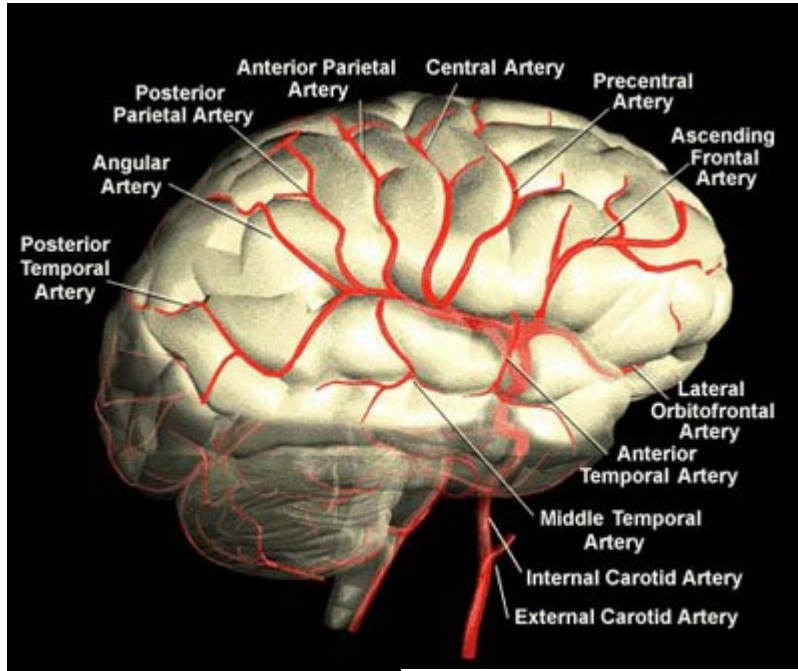
ACA



The ACA is divided into three segments:
A1: origin from the ICA to the [anterior communicating artery \(ACOM\)](#).
A2: from ACOM to the origin of the [callosomarginal artery](#)
A3: distal to the origin of the callosomarginal artery

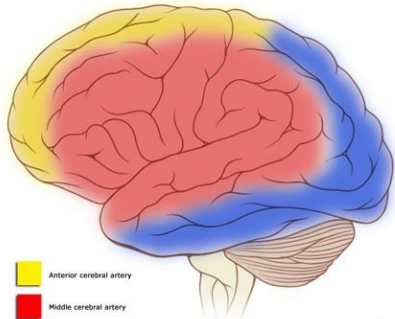


ACM



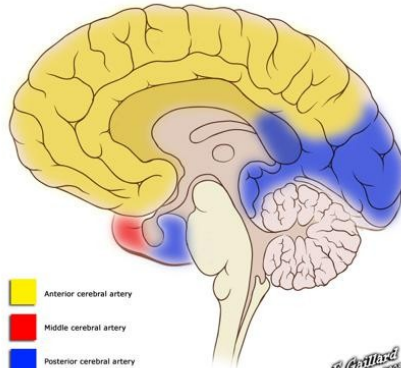
Cortical vascular territories

Cortical vascular territories



■ Anterior cerebral artery
■ Middle cerebral artery
■ Posterior cerebral artery

©Castro2000.org



■ Anterior cerebral artery
■ Middle cerebral artery
■ Posterior cerebral artery

©Castro2000.org

The MCA is divided into M1, M2, M3 and M4 segments:

M1: from the origin to bifurcation/trifurcation (the limen insulae); also known as horizontal segment

M2: from bifurcation to origin of cortical branches (circular sulcus of insula); also known as insular segment

M3: opercular branches (those within the sylvian fissure); also known as opercular segment

M4: branches emerging from the sylvian fissure onto the convex surface of the hemisphere; also known as cortical segment

ACP

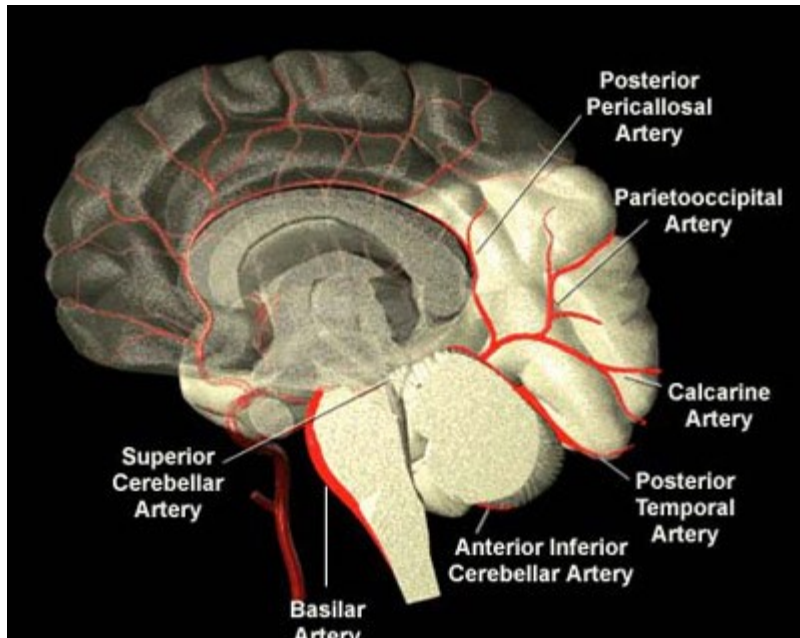
The PCA is divided into four segments named P1 to P4:

P1: from its origin at the termination of the basilar artery to posterior communicating artery (PCOM), within interpeduncular cistern.

P2: from the PCOM around the mid-brain, is within crural cistern and ambient cistern

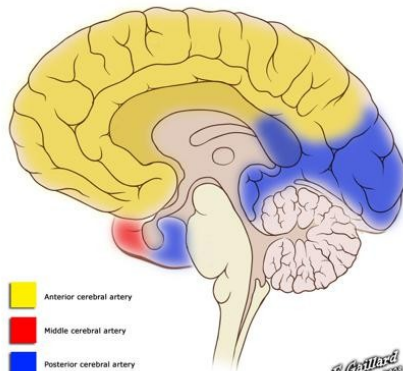
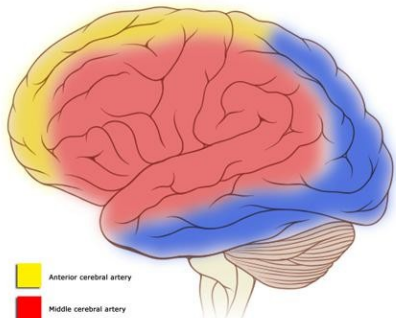
P3: quadrigeminal segment (segment with the quadrigeminal cistern)

P4: cortical segment (e.g., calcarine artery, within the calcarine fissure)



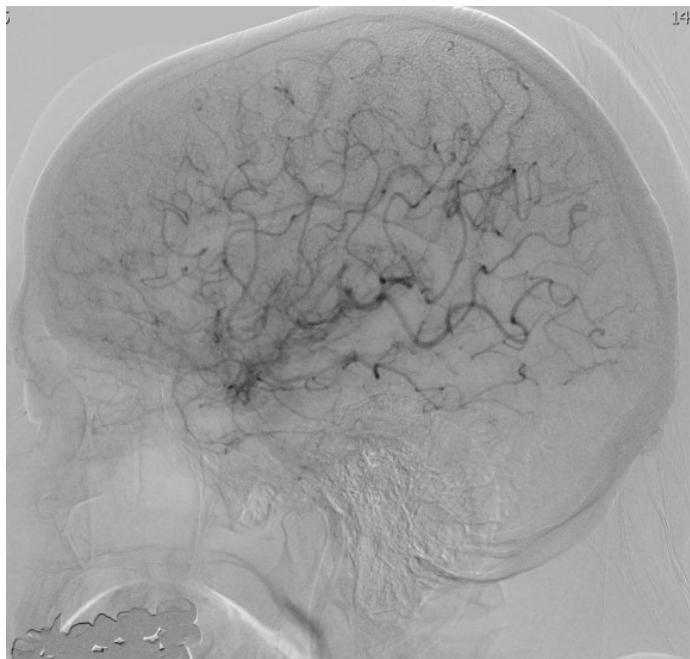
Cortical vascular territories

Cortical vascular territories

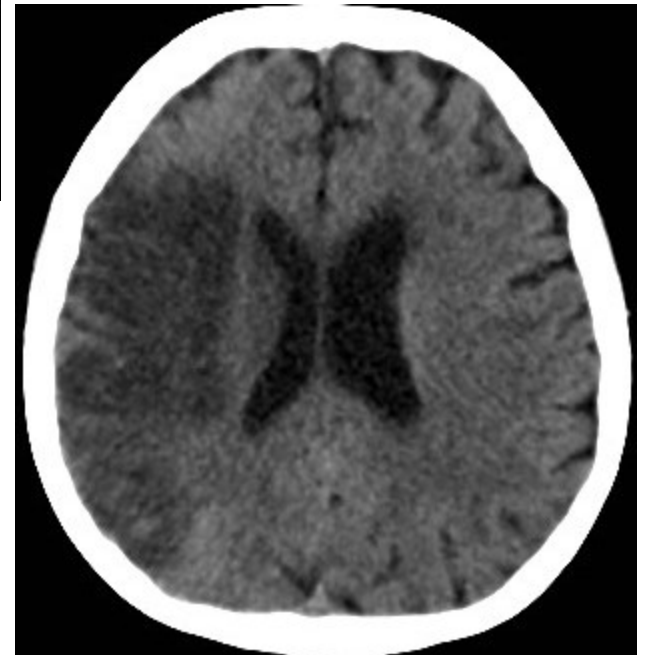
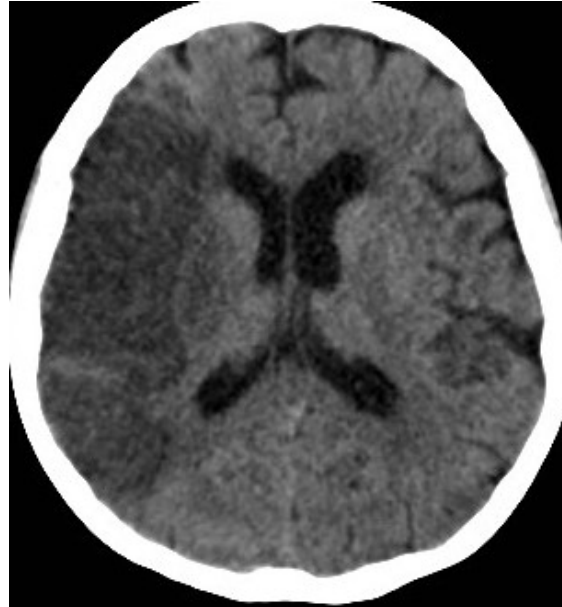
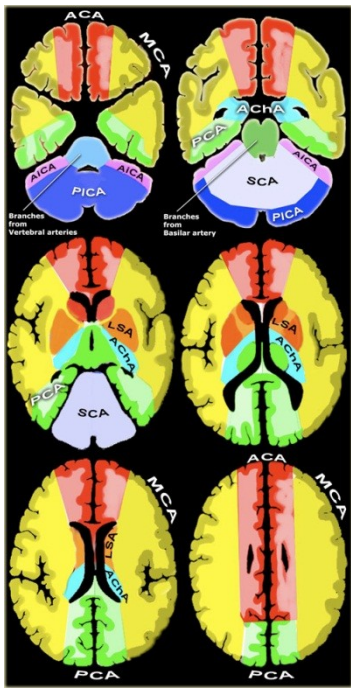


- Anterior cerebral artery
- Middle cerebral artery
- Posterior cerebral artery

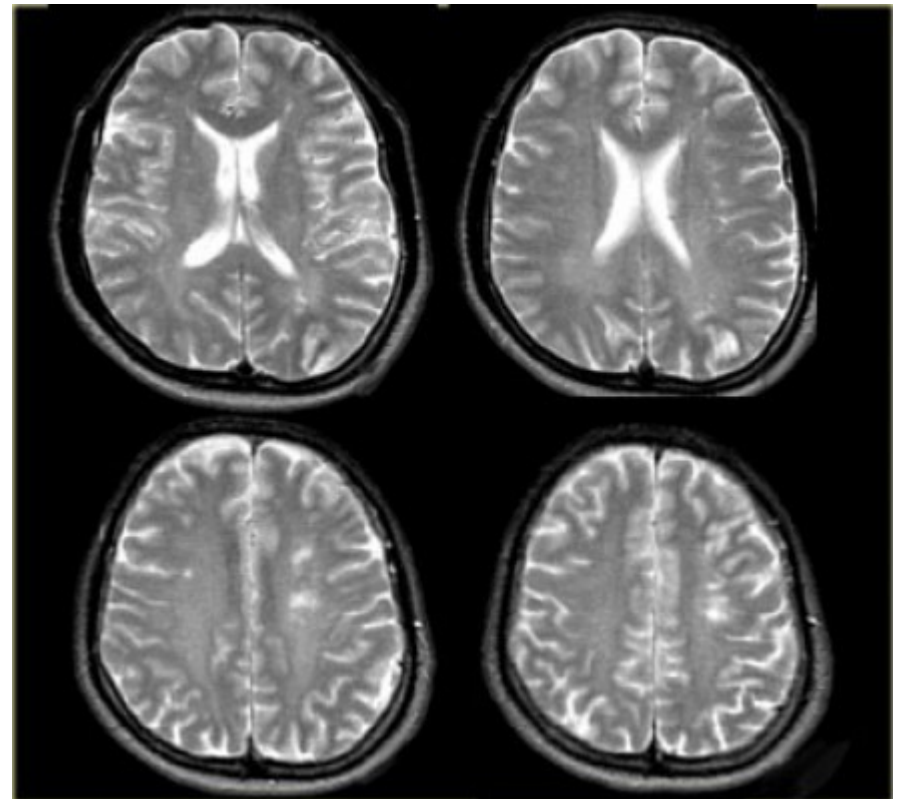
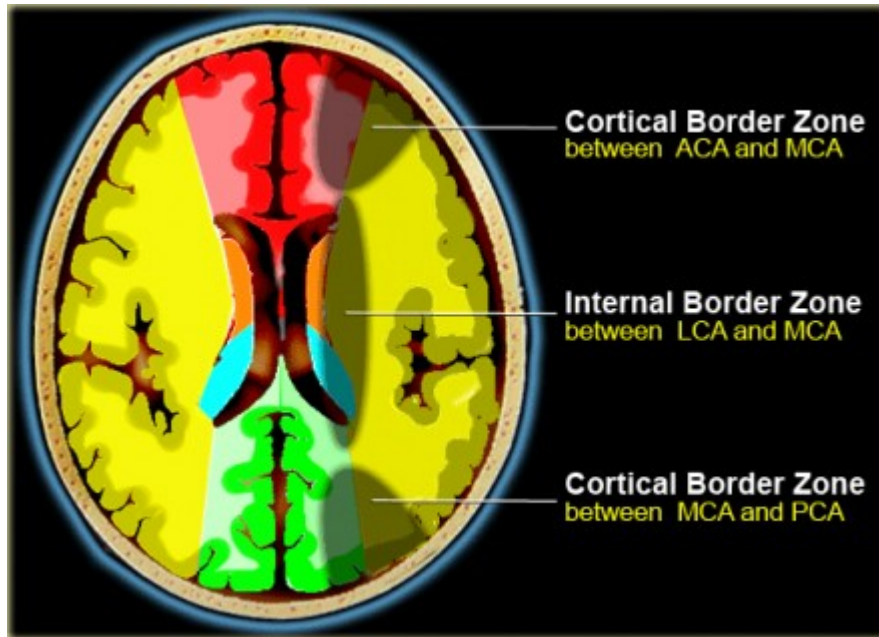
- Anterior cerebral artery
- Middle cerebral artery
- Posterior cerebral artery



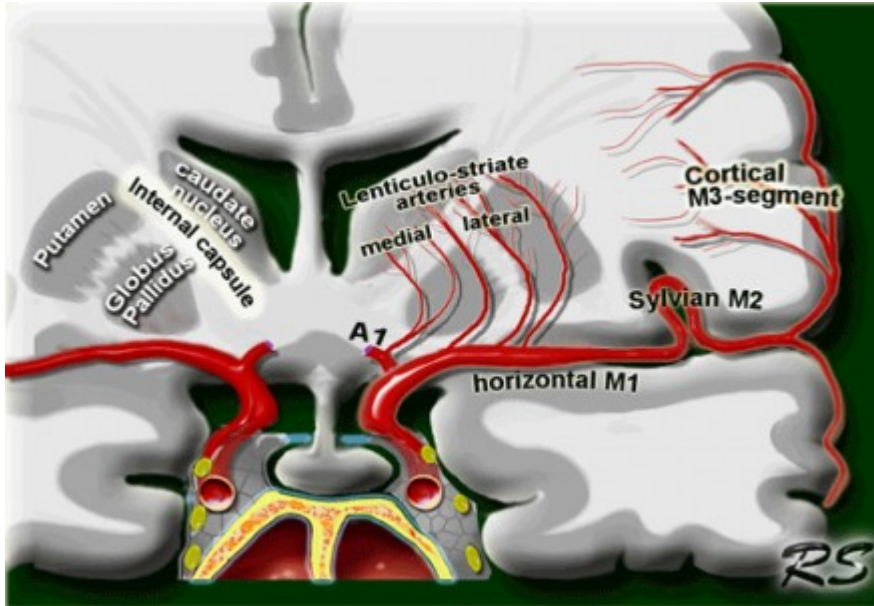
Teritoriální infarkt

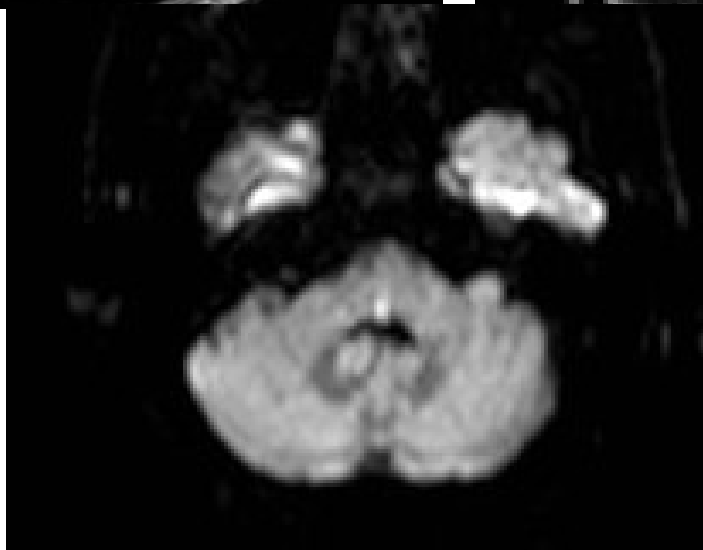
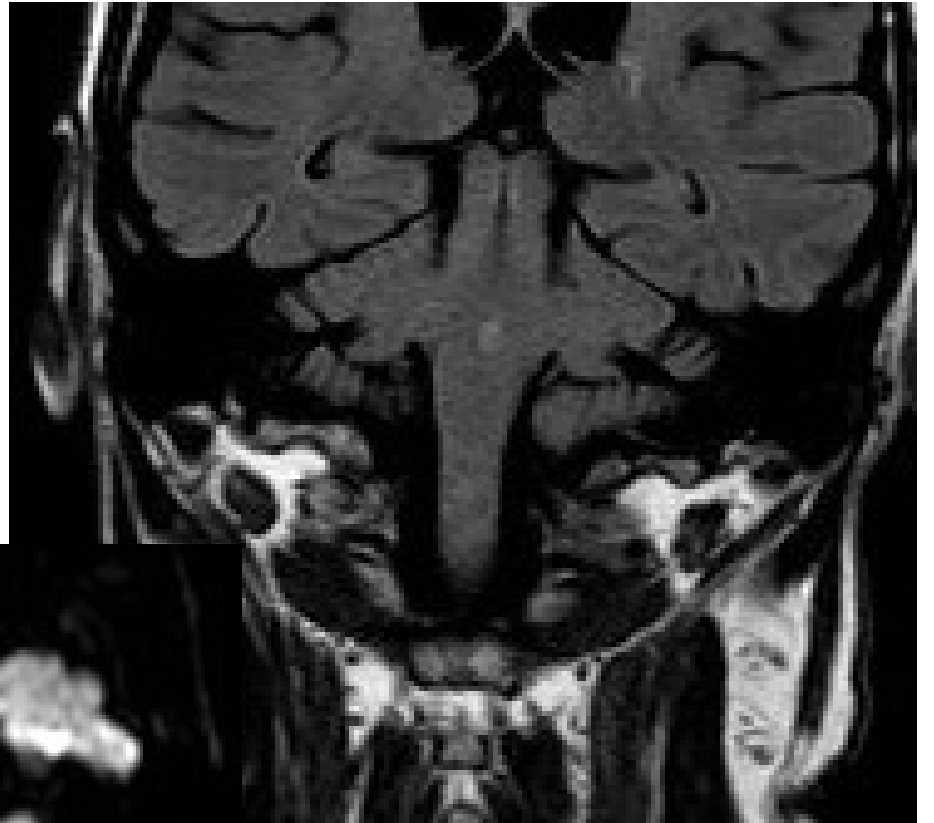
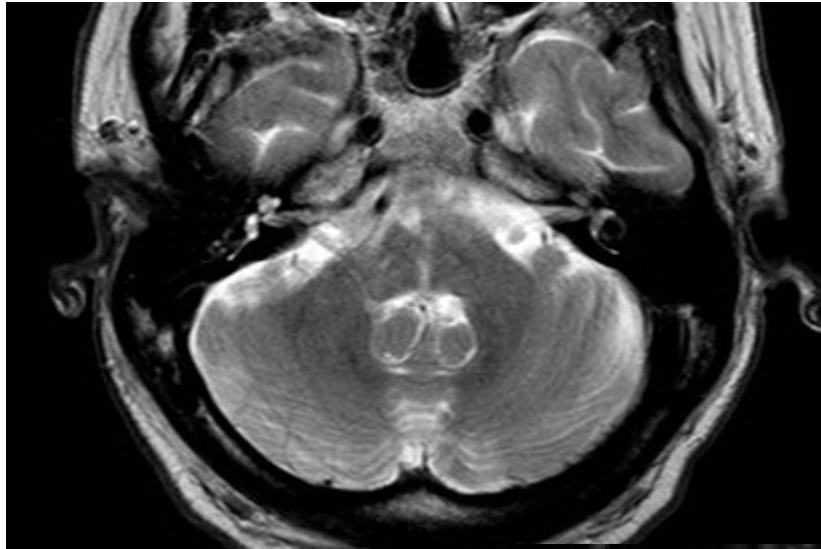


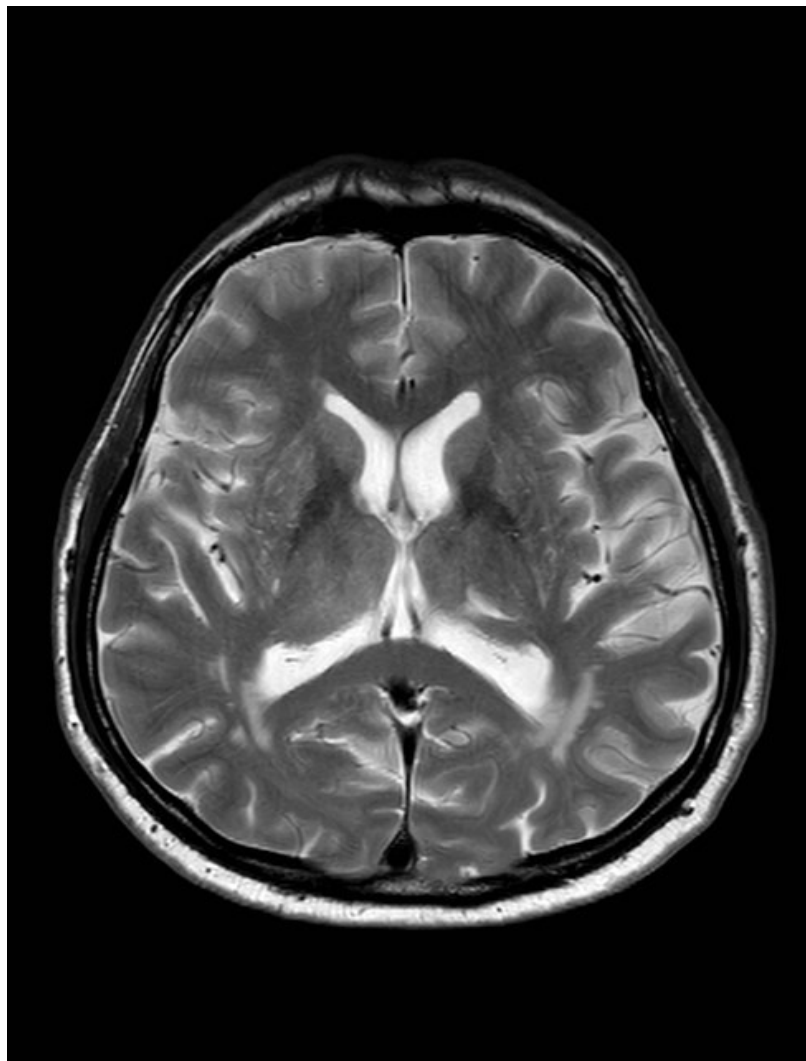
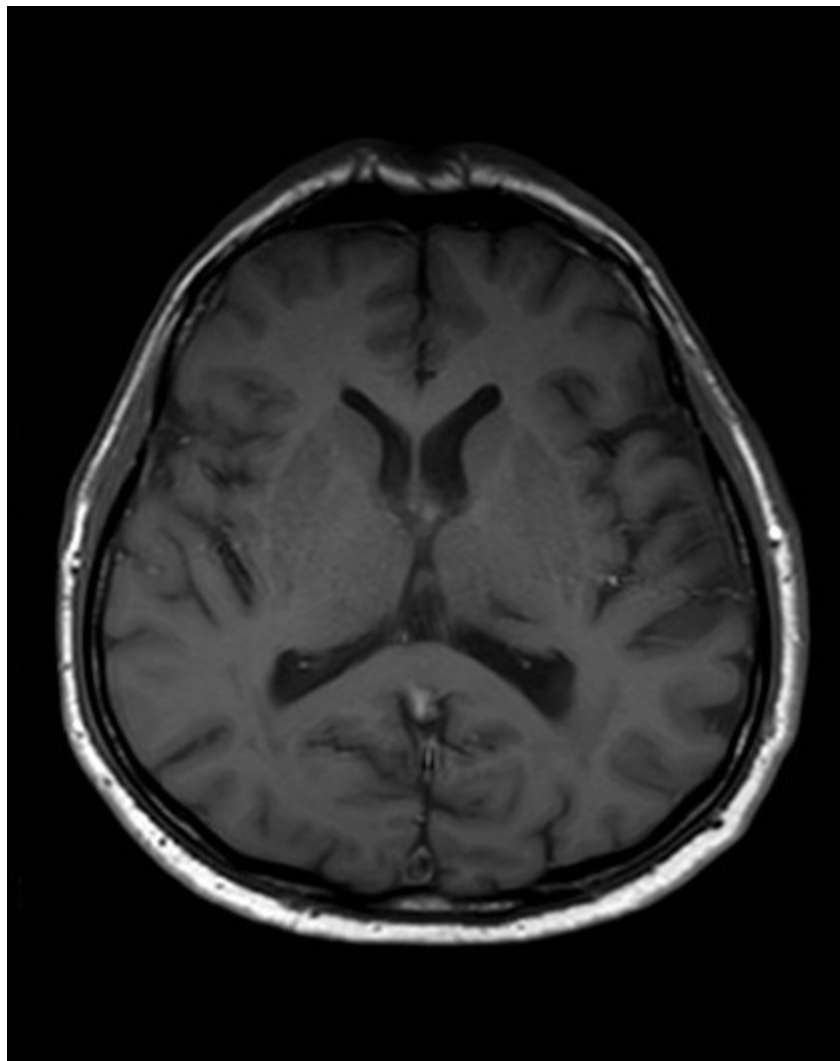
Interterritoriální infarkt



Lakunární infarkt







- <http://www.strokecenter.org/professionals/brain-anatomy/blood-vessels-of-the-brain/>
- <http://www.radiologyassistant.nl/en/p484b8328cb6b2/brain-ischemia-vascular-territories.html>
- <http://radiopaedia.org/articles/middle-cerebral-artery>