

**4**

# **Hierarchy and evolution of nervous system I**

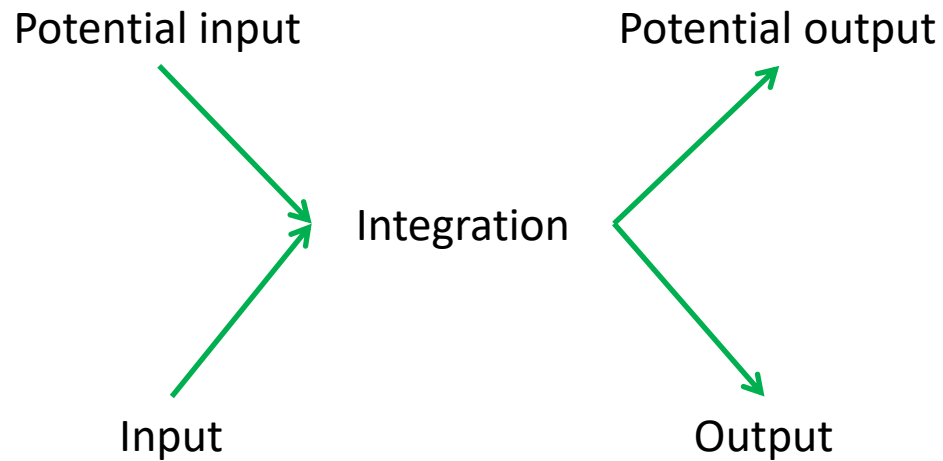
**Evolutionary approach**

**Evolution is not revolution**



# The role of nervous system

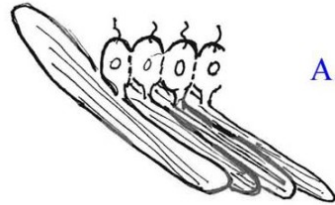
**ANTICIPATION**



**REGULATION**

# Evolution of the nervous system

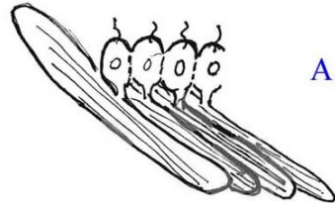
Input → Integration → Output



A. Myoepithelium:  
contractile epithelial cells  
responding to stimulation and  
interconnected by electrical  
synapses (gap junctions)

# Evolution of the nervous system

Input → Integration → Output



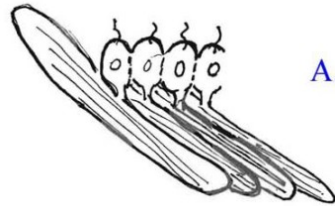
A. Myoepithelium:  
contractile epithelial cells  
responding to stimulation and  
interconnected by electrical  
synapses (gap junctions)



B. Protomyocytes separate  
from sensory epithelium,  
all connected by electrical  
synapses

# Evolution of the nervous system

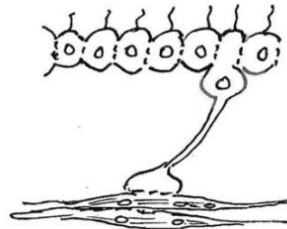
Input → Integration → Output



A. Myoepithelium:  
contractile epithelial cells  
responding to stimulation and  
interconnected by electrical  
synapses (gap junctions)



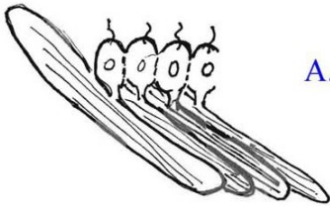
B. Protomyocytes separate  
from sensory epithelium,  
all connected by electrical  
synapses



C. Protoneurons appear,  
sensory and connected to  
separate contractile cells

# Evolution of the nervous system

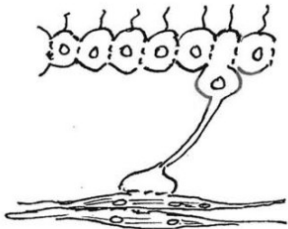
Input → Integration → Output



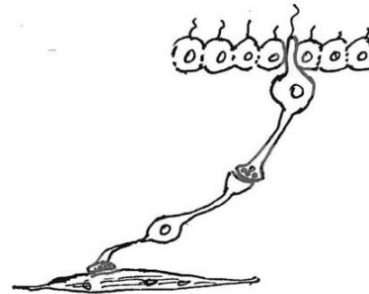
A. Myoepithelium:  
contractile epithelial cells  
responding to stimulation and  
interconnected by electrical  
synapses (gap junctions)



B. Protomyocytes separate  
from sensory epithelium,  
all connected by electrical  
synapses



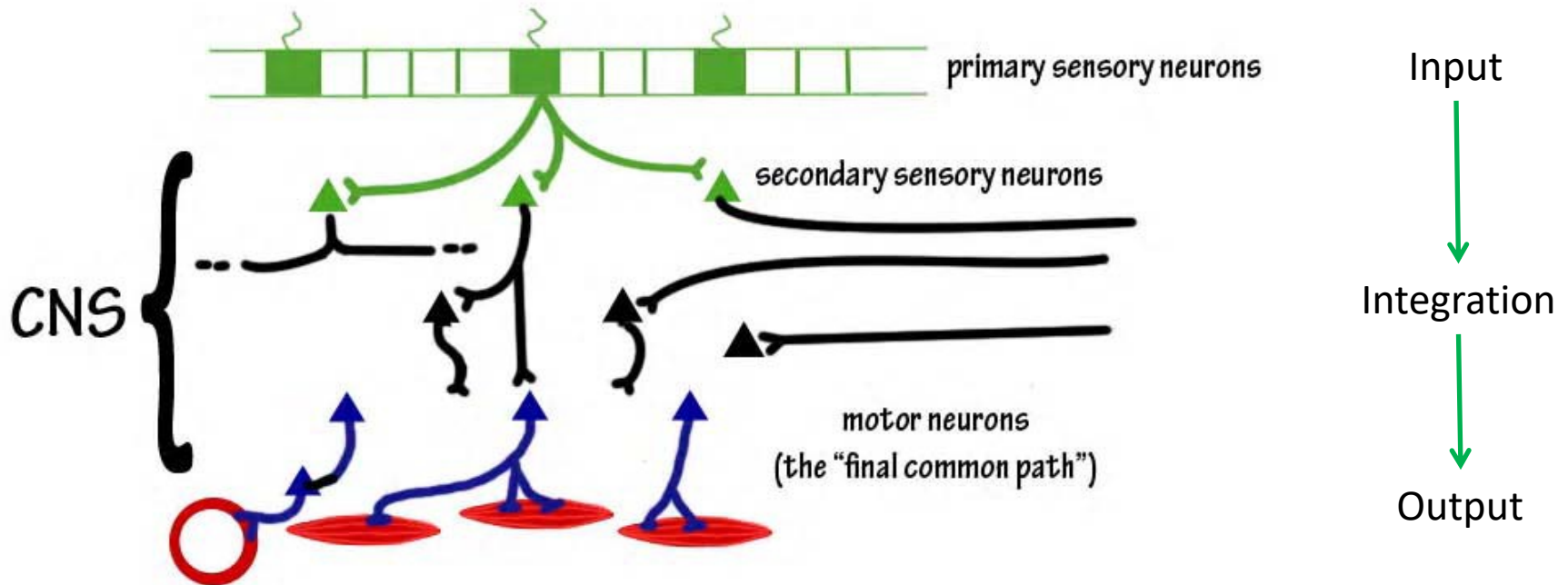
C. Protoneurons appear,  
sensory and connected to  
separate contractile cells



D. Neurons appear, separate  
from both neurosensory cells  
and contractile cells.  
Chemical synapses appear.



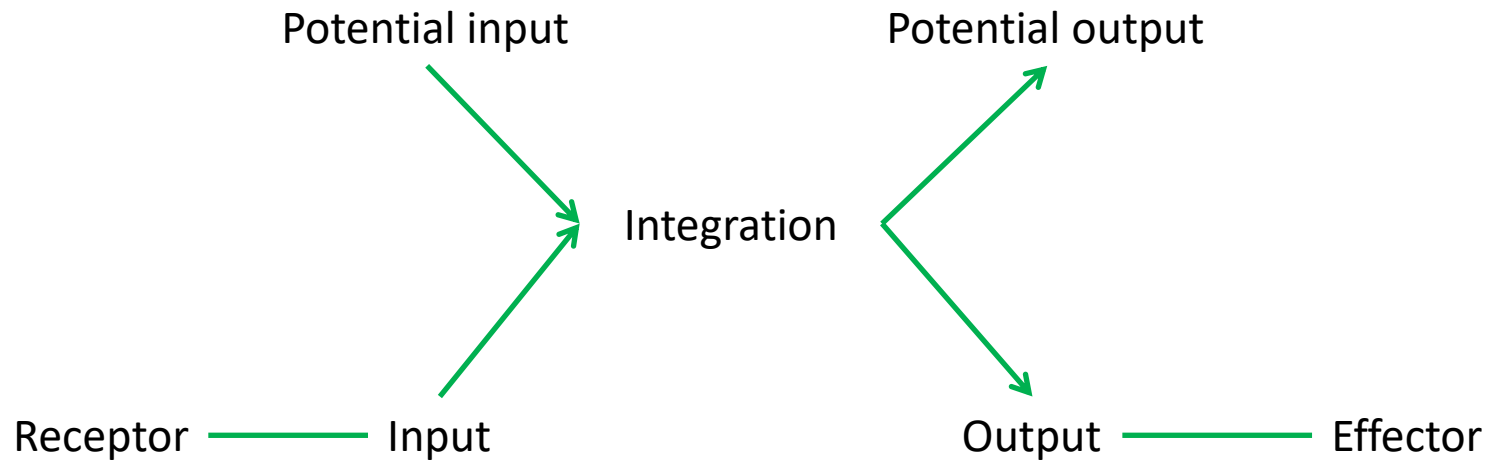
# Evolution of the nervous system





# The role of nervous system

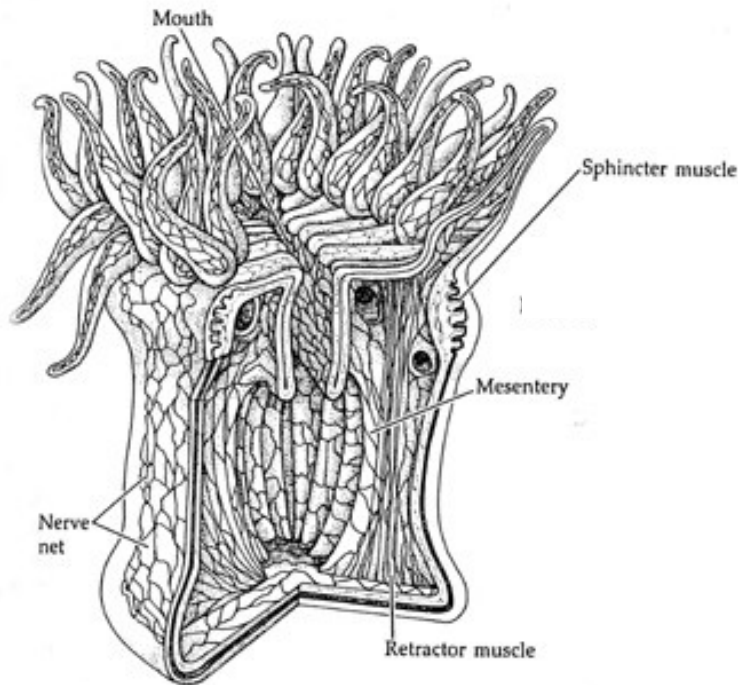
**ANTICIPATION**



**REGULATION**

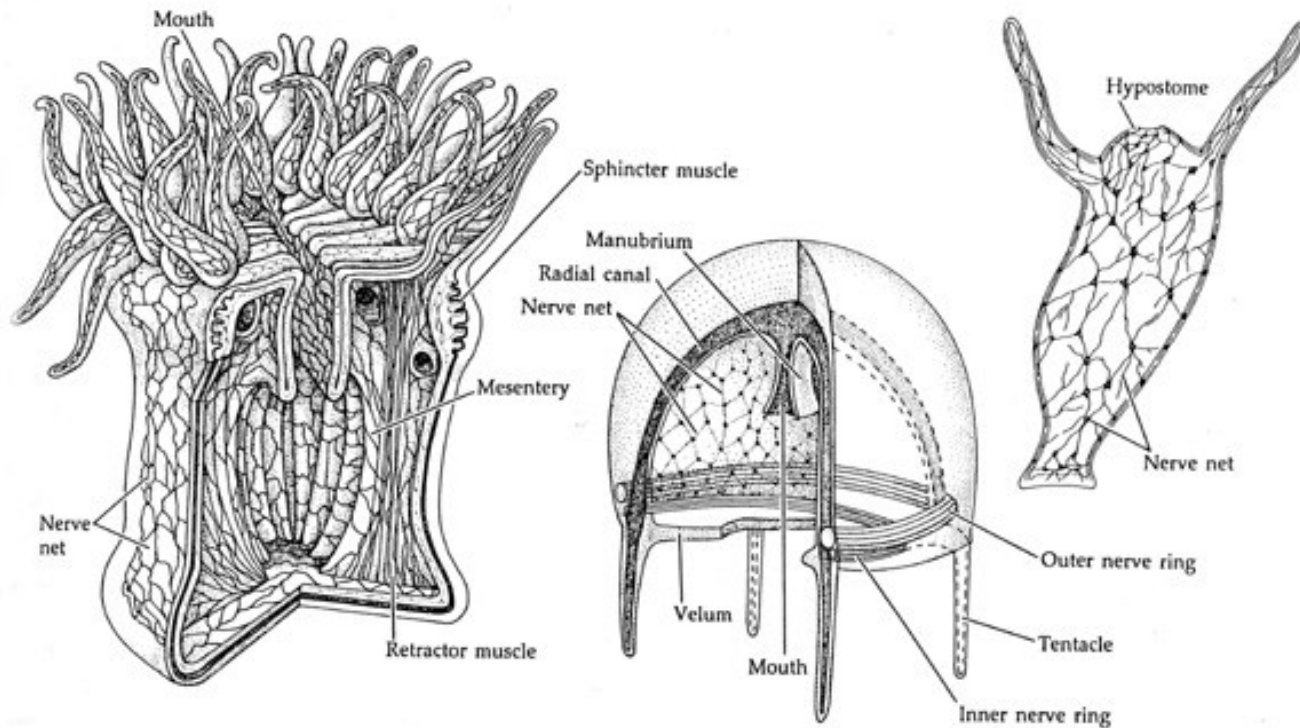
# Evolution of the nervous system

- Polyp
  - Reticular NS
  - Nonspecific reaction on irritation



# Evolution of the nervous system

- Jellyfish
  - Around propulsion part is nervous system into the ring
  - Coordinated contraction – coordinated movement

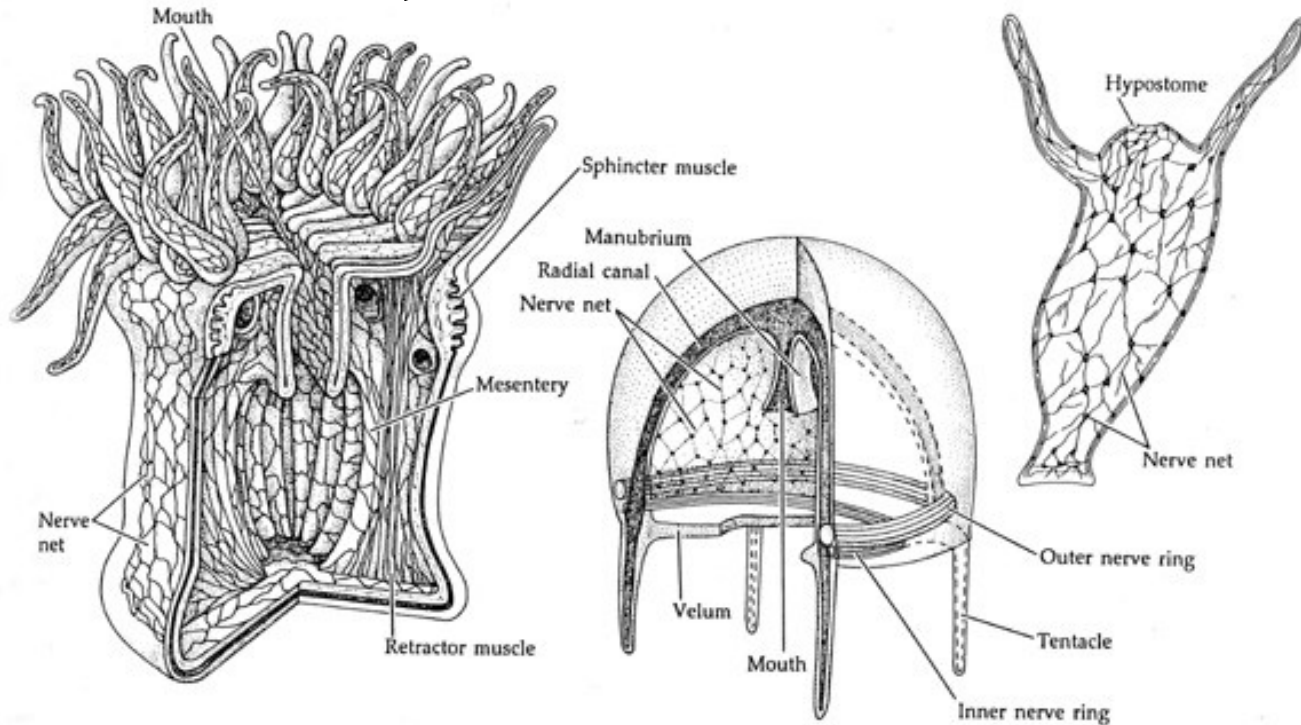


# Evolution of the nervous system

- Jellyfish

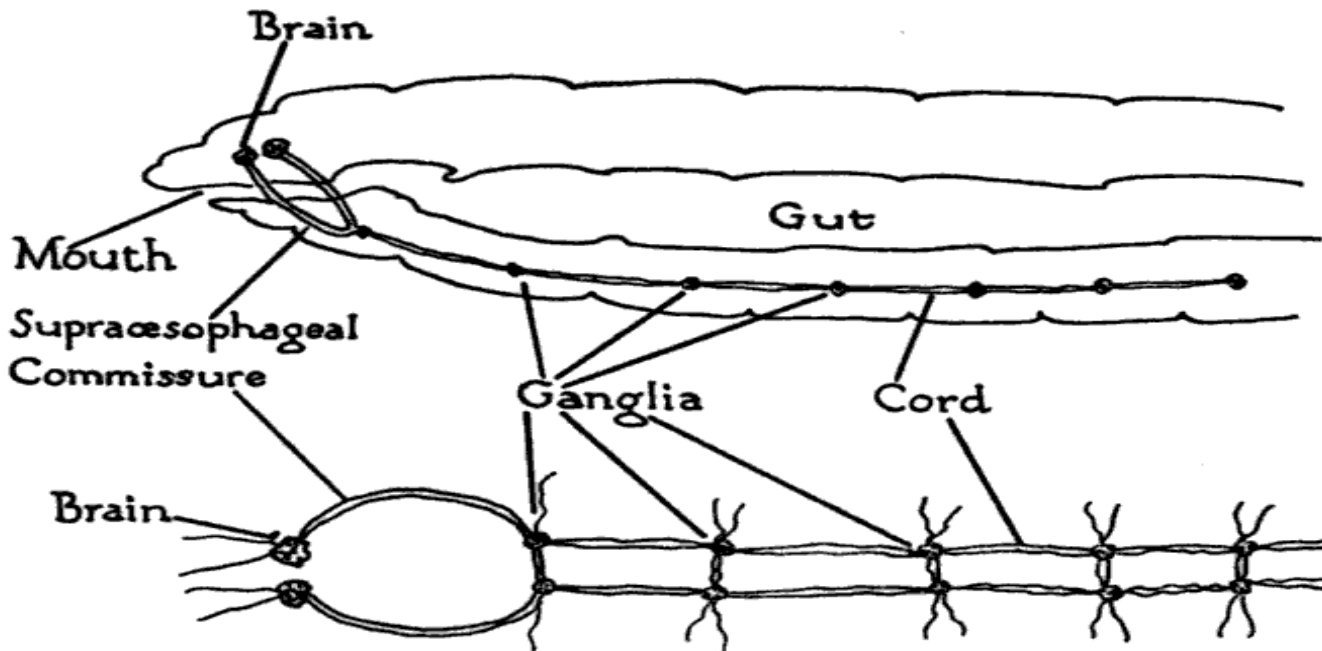
- Around propulsion part of nervous system into the ring
- Coordinated contraction of body for coordinated movement

**FOTORECEPTION**



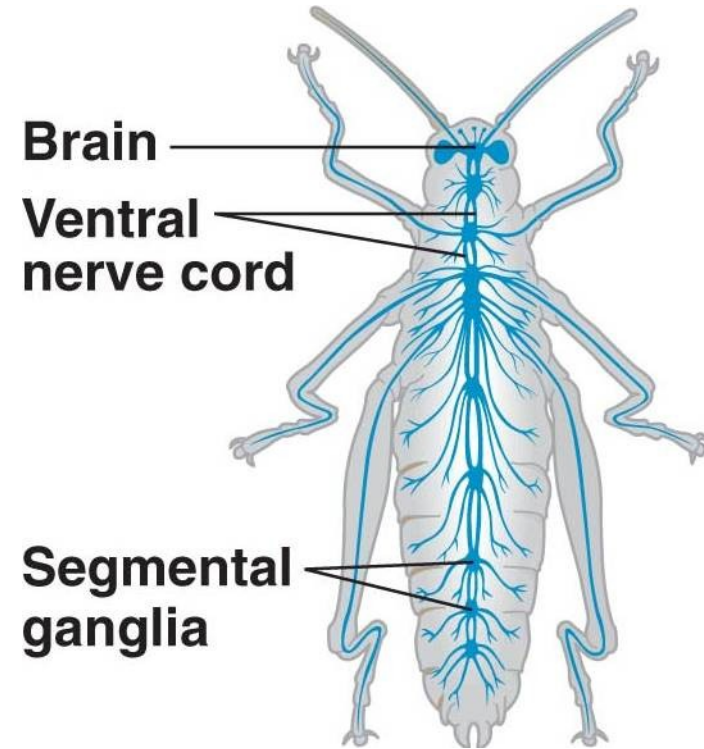
# Evolution of the nervous system

- Worms
  - Segmented nervous system
  - Left – right coordination
  - Ganglia
  - „Brain“ ganglion – head – forward locomotion – food intake



# Evolution of the nervous system

- Insect
  - „Sophisticated“ NS
  - Coordinated movement
  - „Developed“ senses
  - Communication skills (bee)



# Basics of behavior enabling survival

- **Multipurpose movements**
  - The most basic actions of individual organisms
  - ***Locomotion***: to approach or to avoid something
  - ***Orienting***: towards or away from something
  - ***Exploring/foraging/seeking*** (includes the first two plus motivation)



# Basics of behavior enabling survival

- **Multipurpose movements**
  - The most basic actions of individual organisms
  - ***Locomotion***: to approach or to avoid something
  - ***Orienting***: towards or away from something
  - ***Exploring/foraging/seeking*** (includes the first two plus motivation)
- **Background (maintenance) activity**
  - respiration, temperature regulation, postural reflexes

# Basics of behavior enabling survival

- **Multipurpose movements**
  - The most basic actions of individual organisms
  - ***Locomotion***: to approach or to avoid something
  - ***Orienting***: towards or away from something
  - ***Exploring/foraging/seeking*** (includes the first two plus motivation)
- **Background (maintenance) activity**
  - respiration, temperature regulation, postural reflexes
- **Motivation**

# Head receptors and forward locomotion - sophisticated sensorimotor abilities

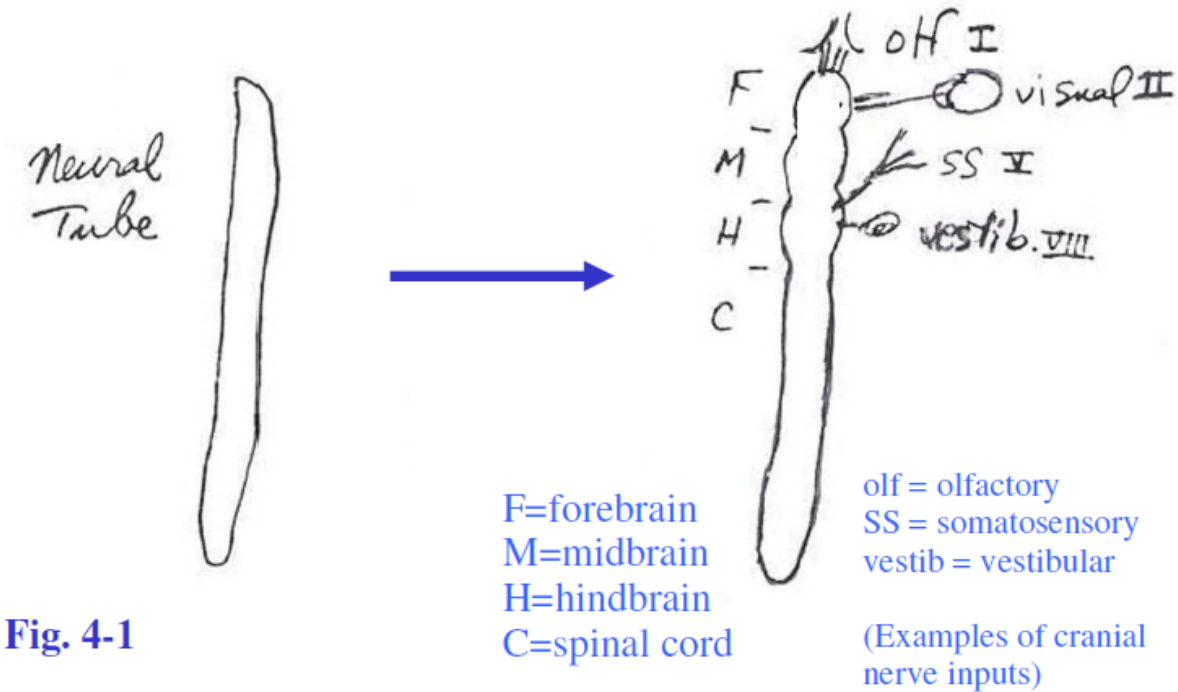
- **Sensory analyzing mechanisms**
  - Connected to inputs from cranial nerves

# Head receptors and forward locomotion - sophisticated sensorimotor abilities

- **Sensory analyzing mechanisms**
  - Connected to inputs from cranial nerves
- **Associated motor apparatus**
  - For directing the receptors (orienting movements)
  - For controlling alterations in posture and locomotion under guidance from these receptors

# Evolution of the brain

- Neural tube
- Locomotion
- Rostral receptors



# Evolution of the brain

- **Expansion of hindbrain**

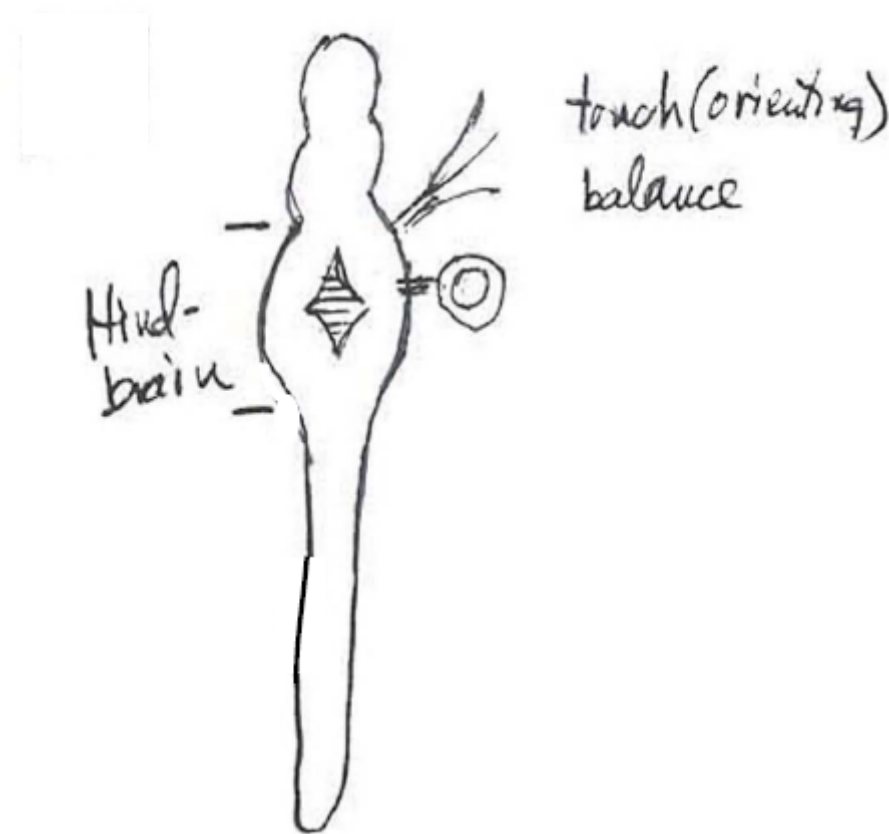
(Rhombencefalon - Medula oblongata, pons Varoli, cerebellum)

- **Input**

– Information from head sensors

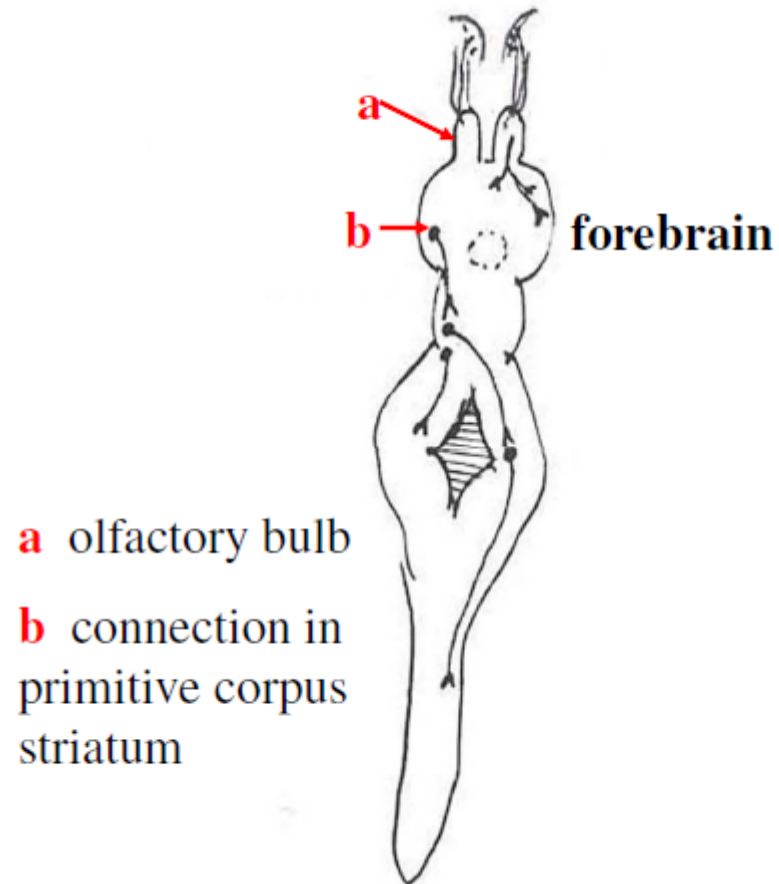
- **Output**

– Motor system  
(Fixed action pattern - reflex/instinct behavior)



# Evolution of the brain

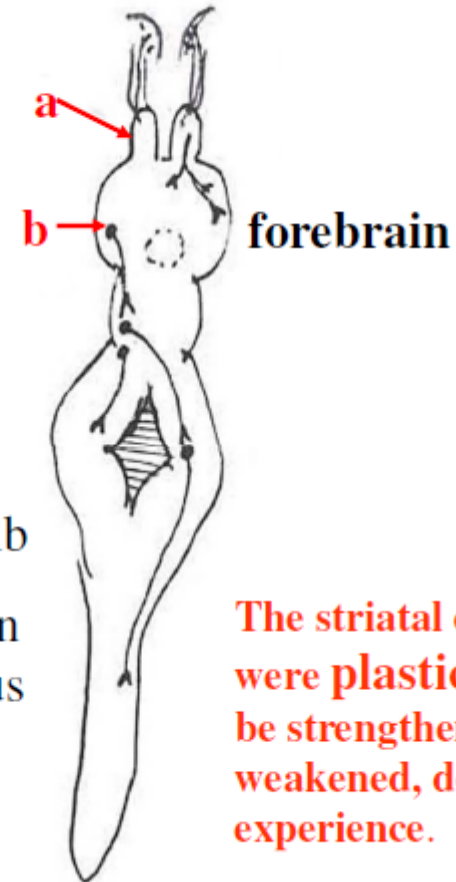
- **Expansion of forebrain 1**  
(Prosencephalon - diencephalon, telencephalon)  
(simultaneously with hindbrain)
- **Input**
  - Olfaction  
(Approach/avoidance)
- **Output**
  - Motor system  
(via corpus striatum)





# Evolution of the brain

- **Expansion of forebrain 1**  
(Prosencephalon - diencephalon, telencephalon)  
(simultaneously with hindbrain)
- **Input**
  - Olfaction  
(Approach/avoidance)
- **Output**
  - Motor system  
(via corpus striatum)

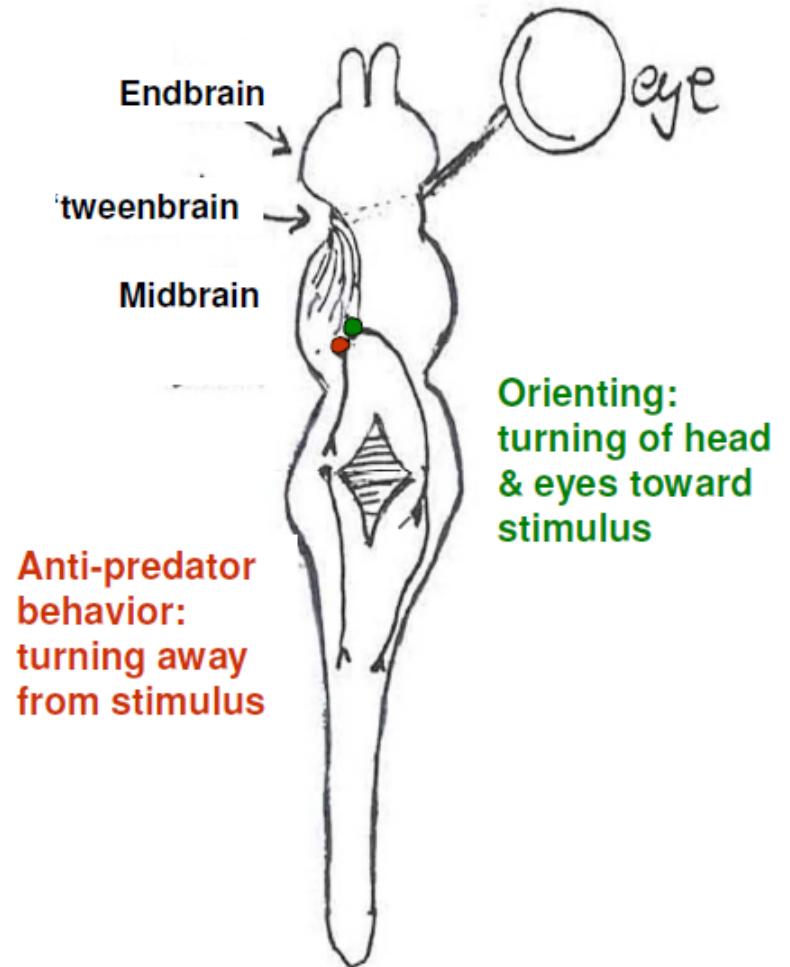


**a** olfactory bulb  
**b** connection in primitive corpus striatum

**The striatal connections were plastic: They could be strengthened or weakened, depending on experience.**

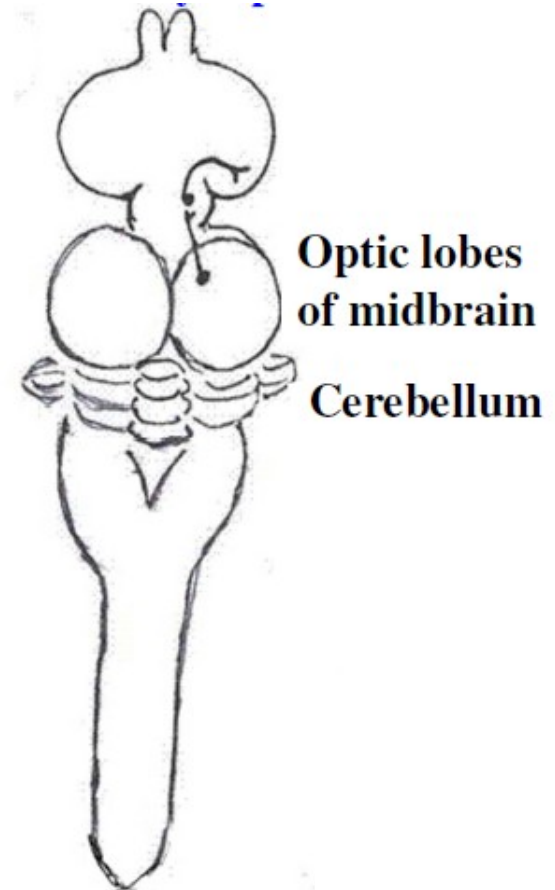
# Evolution of the brain

- **Expansion of midbrain**
- **Input**
  - Vision, sense of hearing (distant senses)
- **Output**
  - Motor system (Approach – contralateral m.) (Avoidance – ipsilateral m.)
- **Advantage**
  - Speed
  - Acuity



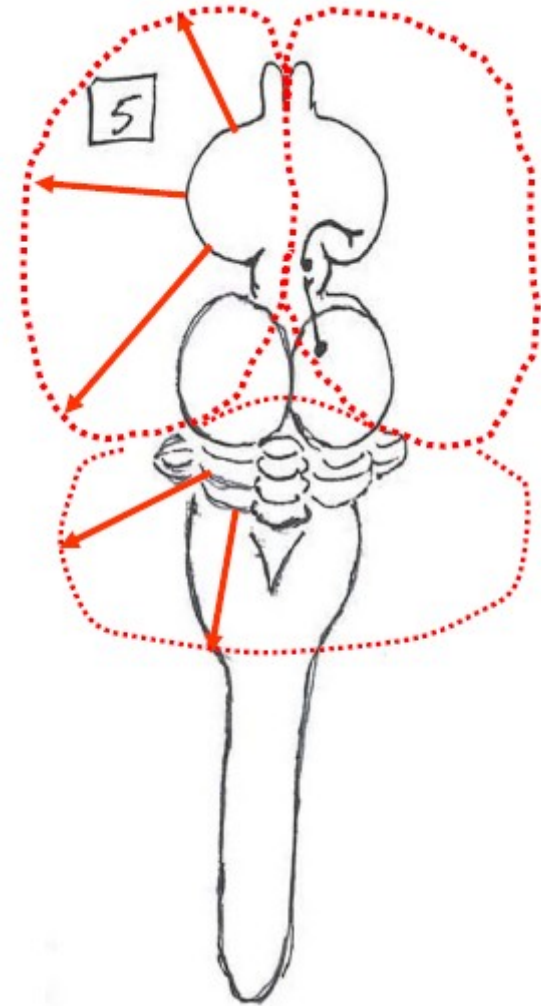
# Evolution of the brain

- **Expansion of forebrain 2**  
(Prosencephalon - diencephalon, telencephalon)
- **Input**
  - Nonolfactory systems connected to forebrain
  - Mainly vision and hearing
- **Advantage**
  - Plastic connections of forebrain
- **Thalamus**
  - Gating  
(Corpus striatum and cortex)



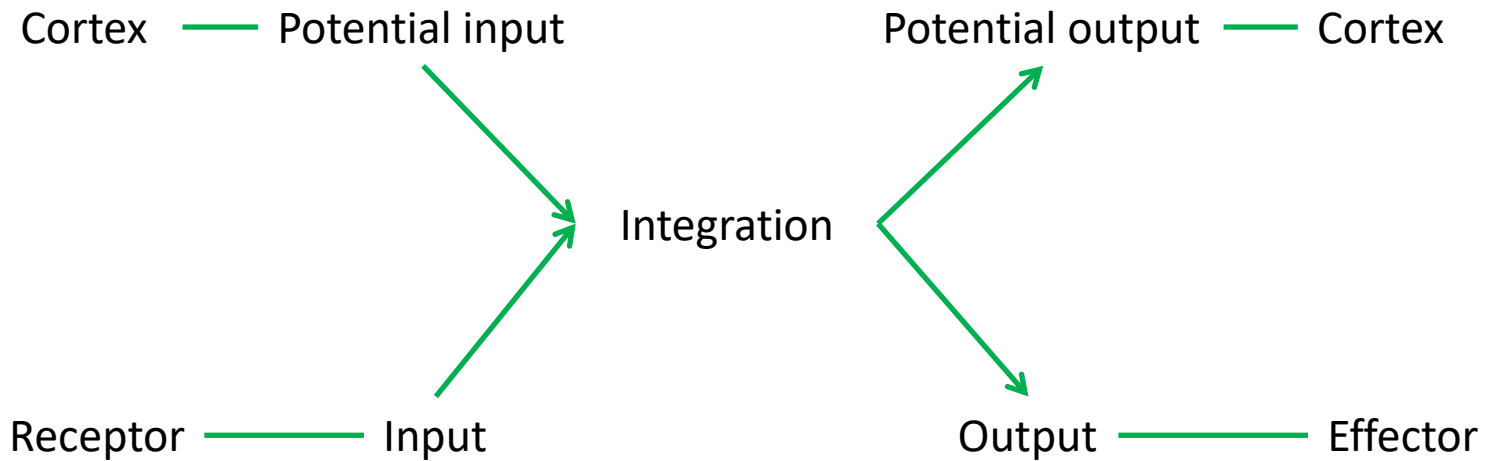
# Evolution of the brain

- Expansion of forebrain 3
- Neocortical expansion
- Simultaneous expansion of
  - Neostriatum
  - Neocerebellum
- Advantage
  - „High resolution“ information processing
  - Anticipation



# The role of nervous system

**ANTICIPATION**

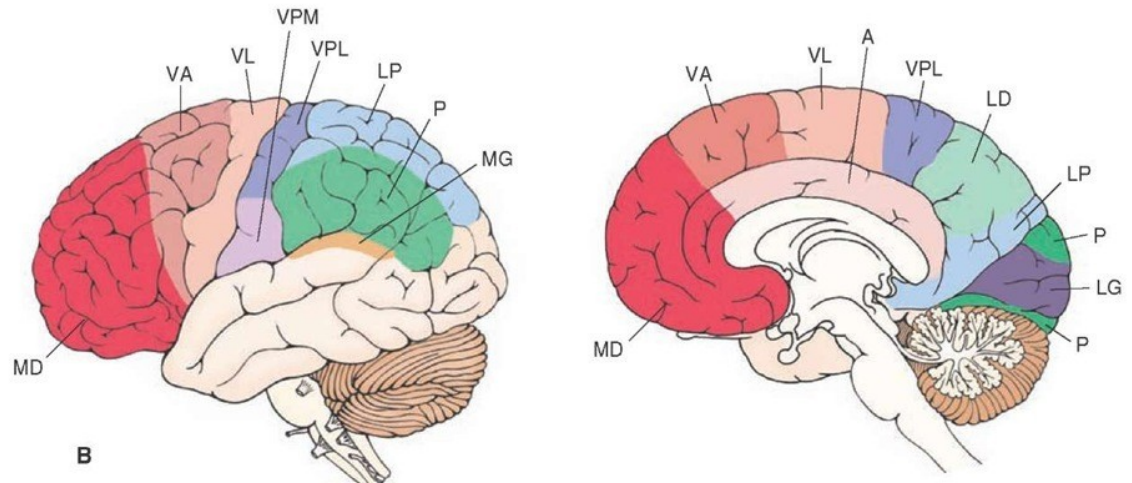
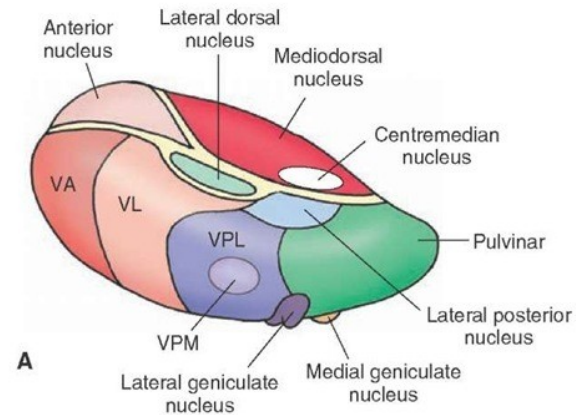


**REGULATION**

# Thalamus and neocortex

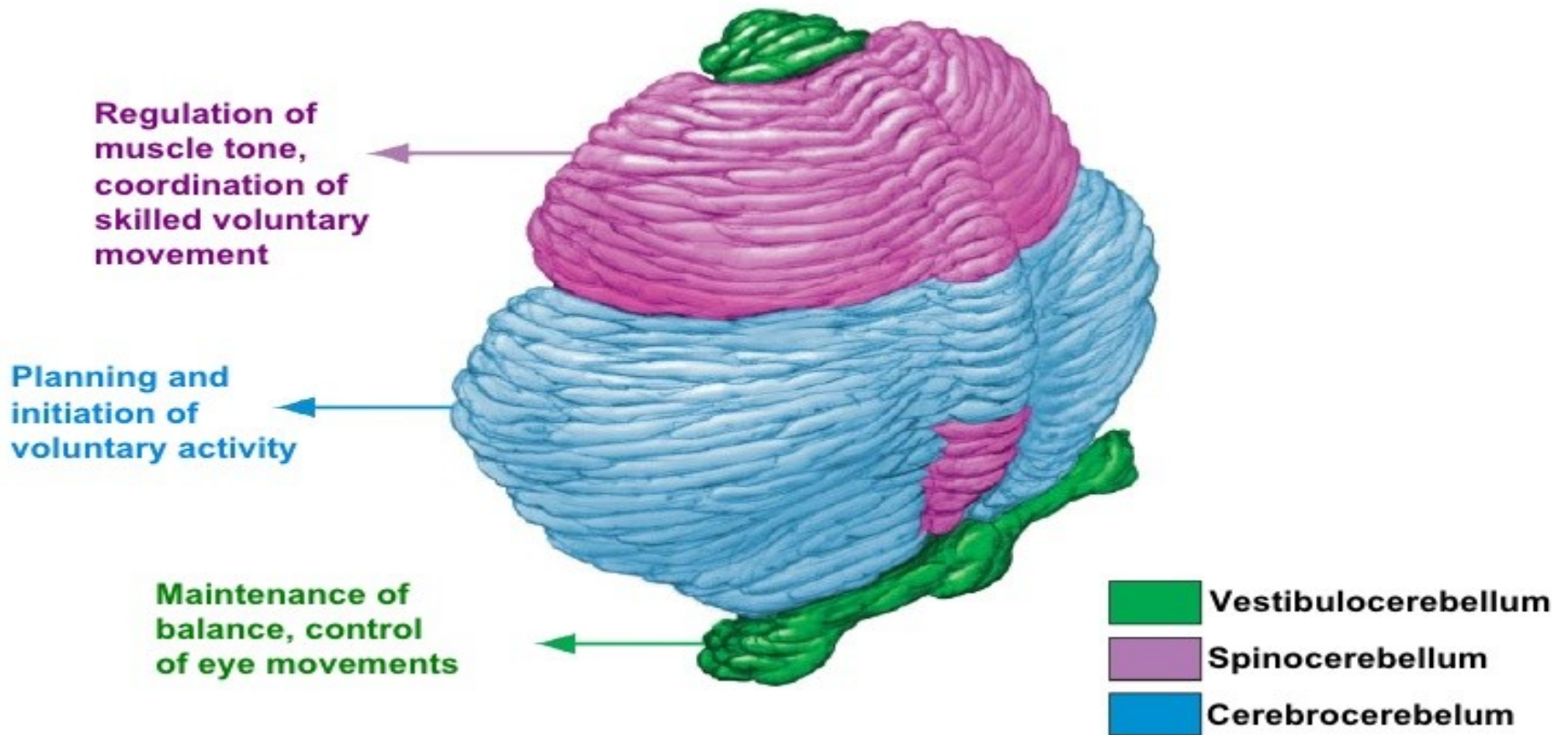
## Gating

- Thalamic nuclei
  - Nonspecific
  - Specific
- Reciprocal connections between thalamus and neocortex



# Cerebellum

## Coordination





# Hierarchy of central nervous system

