

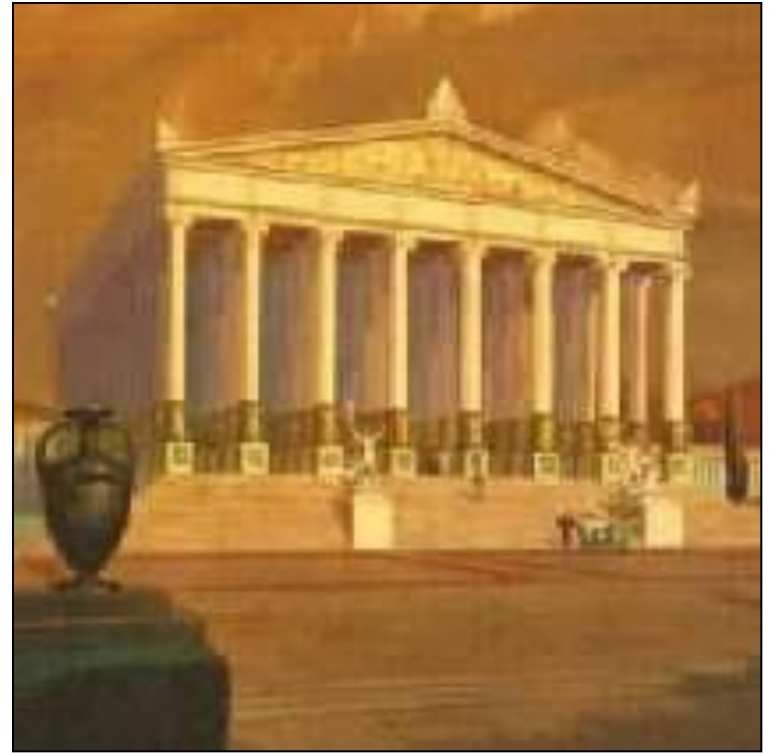
Aesthetics is a science about beauty.
It is connected with sensual perception.
Rules are changing during the time and there
are differences in various regions. .



???

???







„Penta en arithmo“

(Pythagoras)

$$1/1,618 = 0,618$$

Golden cut

Perception of the object

- Composition
- Single items
- Harmony
- Symetry
- Dominanca
- Lines



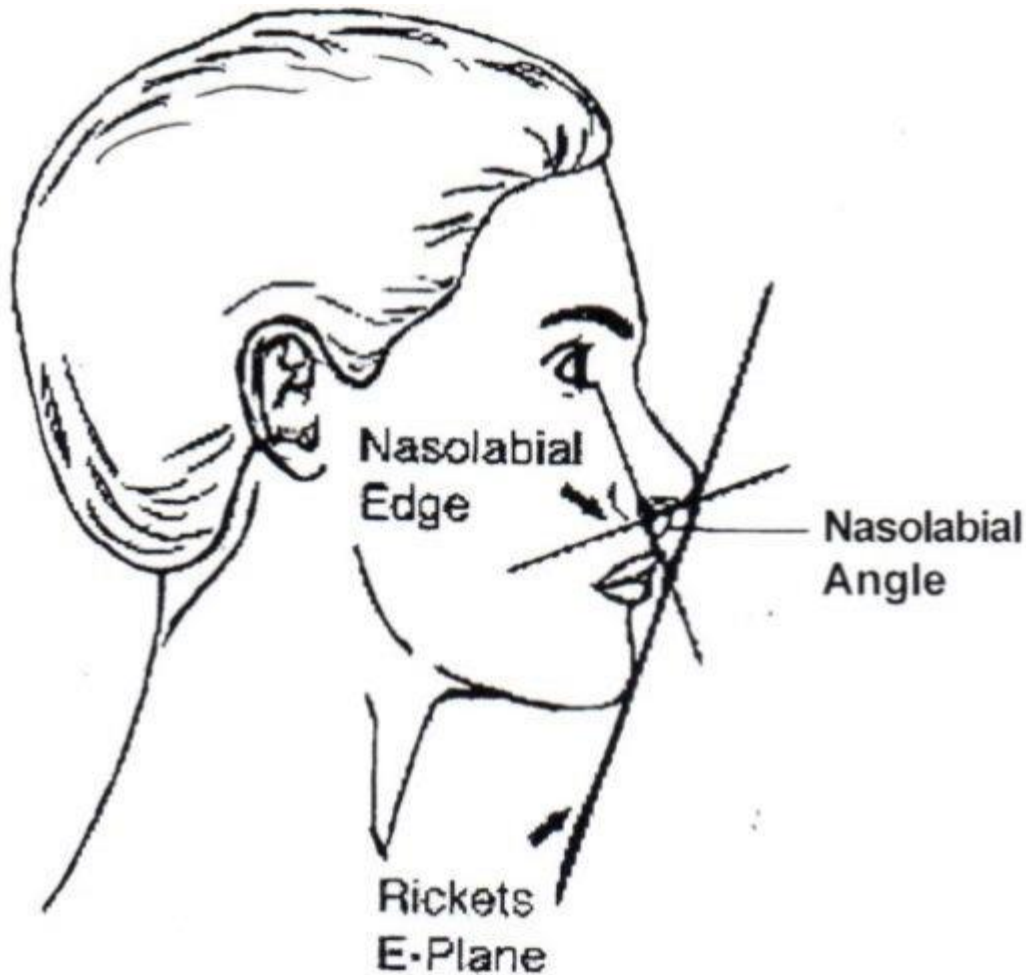
Dentofacial harmony

- Imaginary lines – structures must have harmonious relation to them
- Teeth are in harmony with the face, they can attract our attention and distract it from other structures

Horizontální
a vertikální linie
Symetrála



Profile:



Balance of lip, nose and chin.

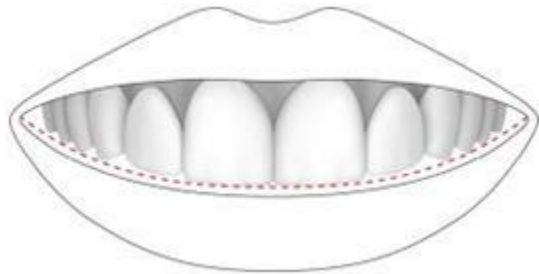
Nasolabial angle:
90° – 95 °men
100° - 106° women

Ricketts line:
4 mm before upper
2 mm before lower lip

Line of smile

- Connects incisal edges of upper frontal teeth and touches cusos of upper molars. Lower border is lower lip. Line of lower lip is parallel to line of smile.
- Upper central incisors should be in touch with wett part of upper lip.

Line of smile



**Bilaterální
negativní prostor:**



Normální



Zvětšený

Bilateral negative space





C3 – 1,5 W 10% voda, 8 % vzduch

Dentál harmony

Inclination of long axis

Slight mesial inclination of long axis

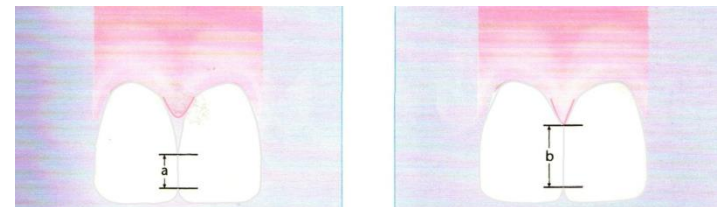
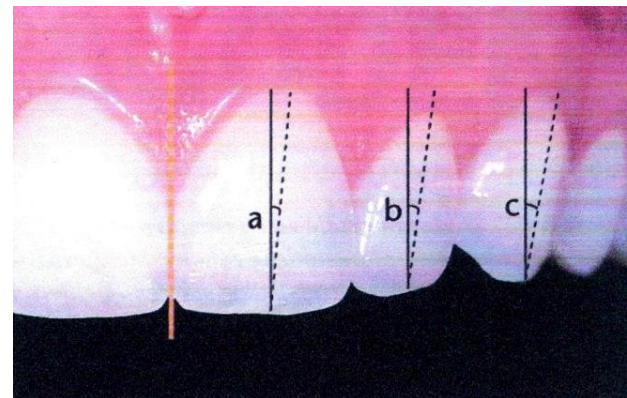
Slight inclination vestibulary

Position of contact points:

They become smaller and move apically

(50:40:30)

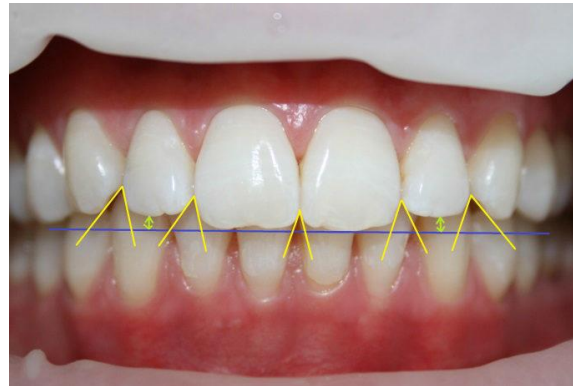
Their elongation can optically widen teeth



Dental harmony

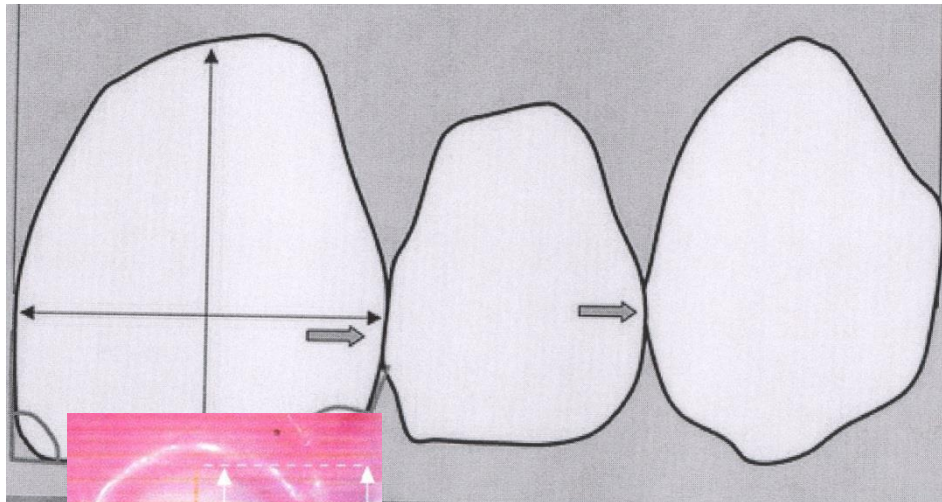
Interincisal spaces become smaller in distal direction

They become smaller in younger individuals

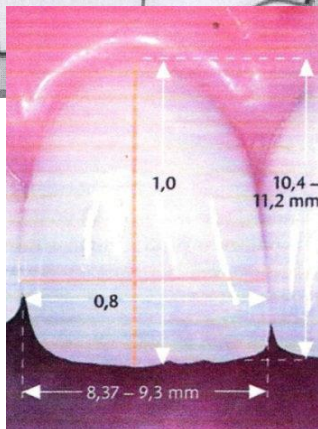




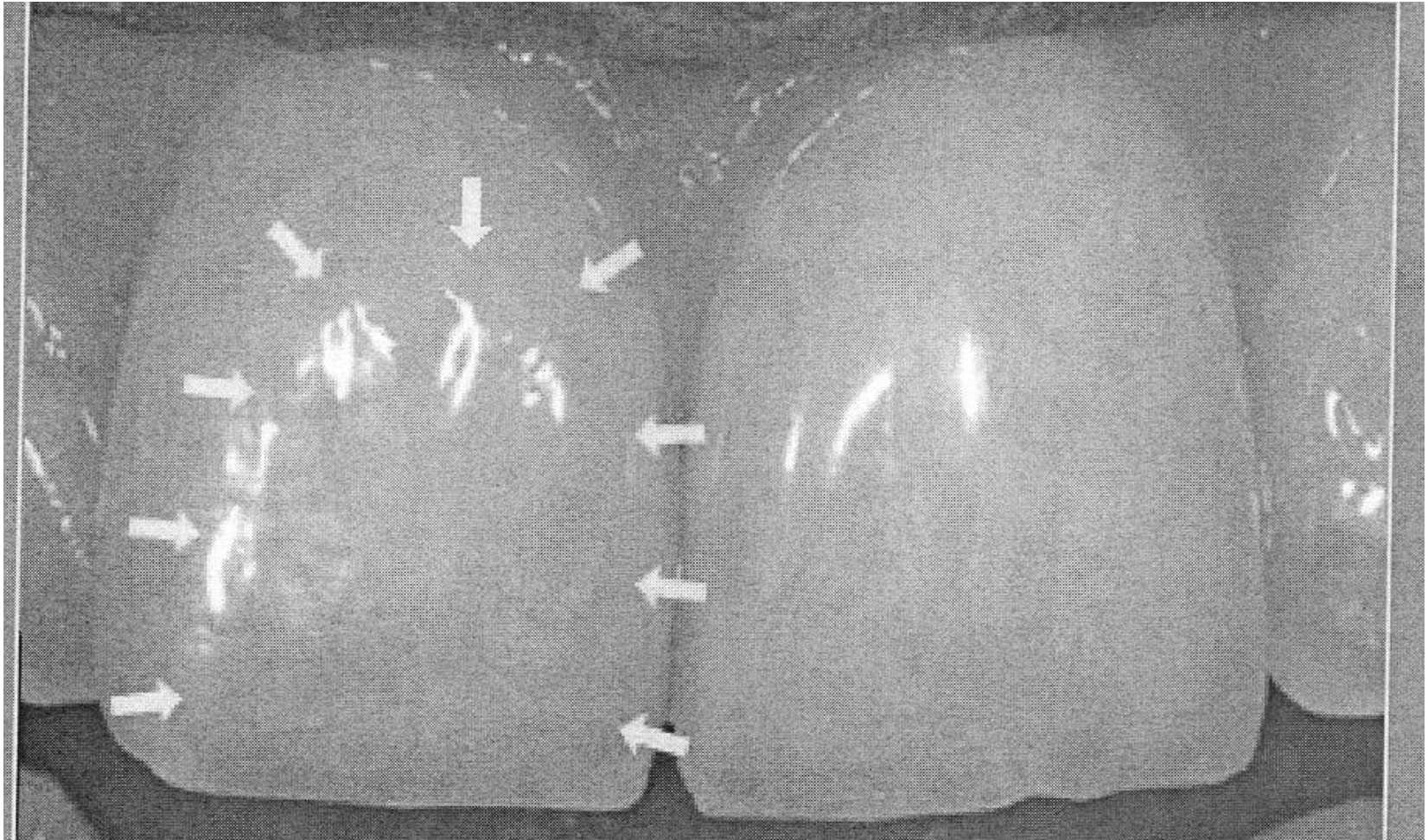
Relation between width and height



Width of upper central incisor is 70 – 80% its height



Optical width



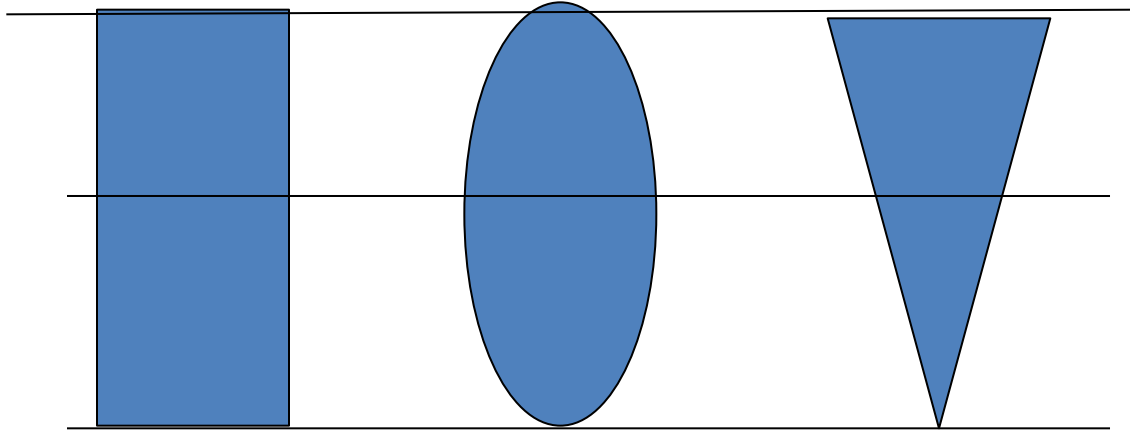
Golden cut

$$\frac{\text{Width}}{\text{Height} + \text{Width}} = 0,618$$

Decreasing of width 40% in distal direction

Shape of crown principally corresponds to shape of the face

- Shape of the face:
angular, oval a triangular
- Corresponding shapes of teeth



Front

Zygomatic line

Mandibular line

Curvature of labial surface - reflection



Reflexe světla