

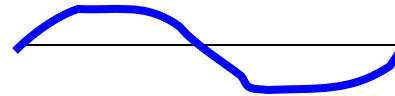
Light

- Electromagnetic radiation

-Wavelength

-Amplitude

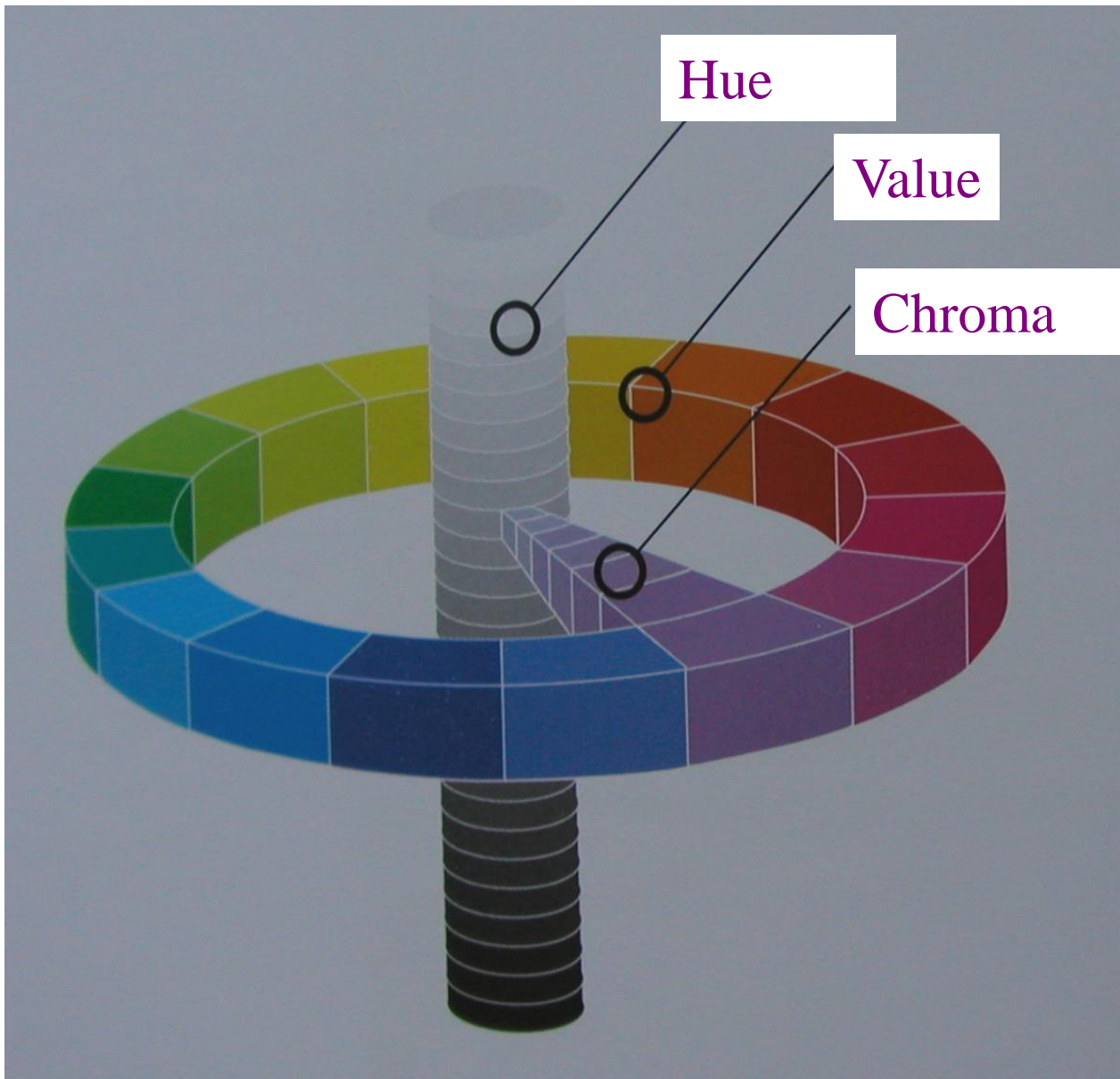
Photons



Beam

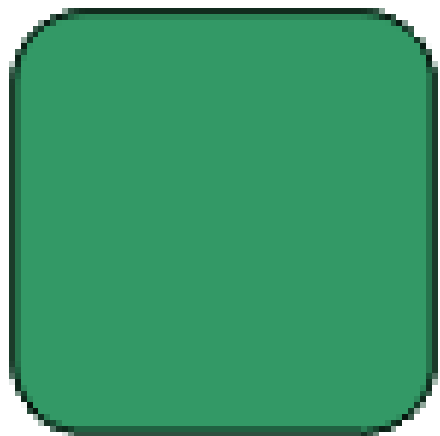
- **Reflection**

- **deflection**

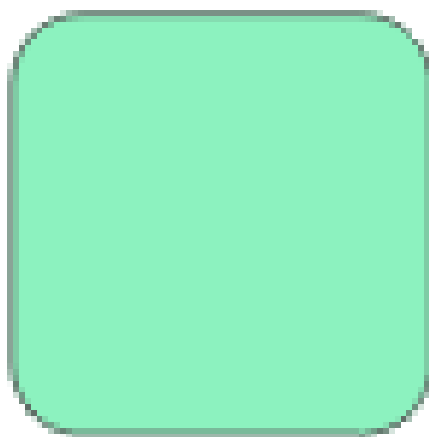


Three variables
of colour

Chroma

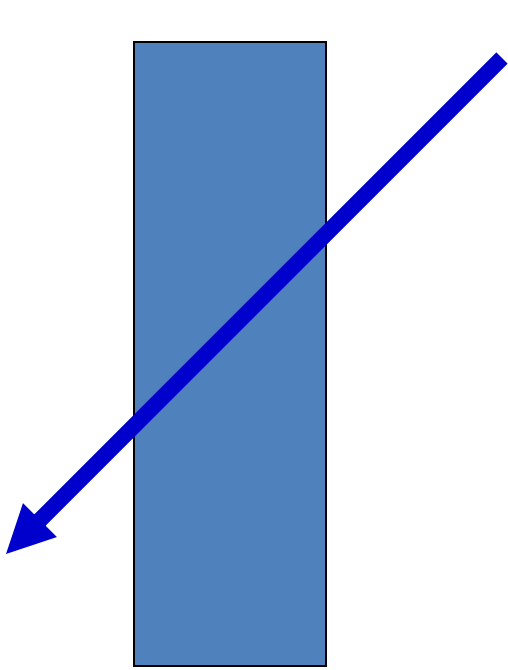


Hue

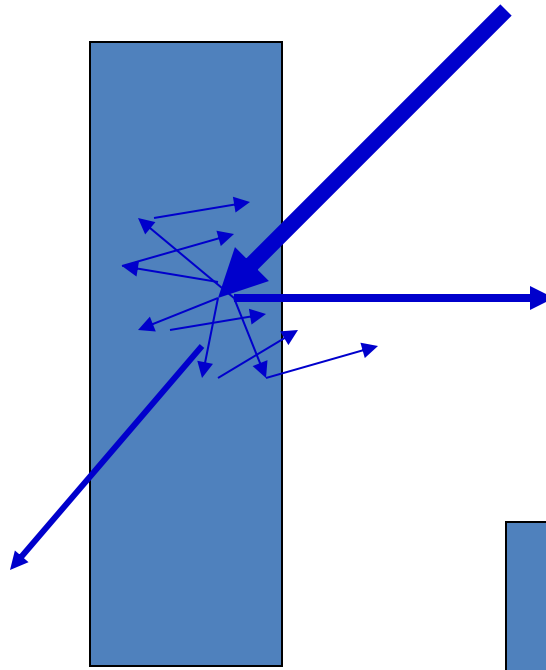


Value

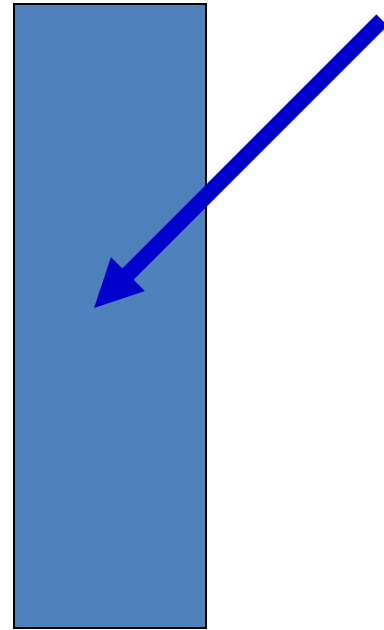




Transparency



Translucency



Opacity



Dentin is more opaque than enamel
Enamel is more translucent than dentin
The colour of dentin is the same – the difference is in hue



1

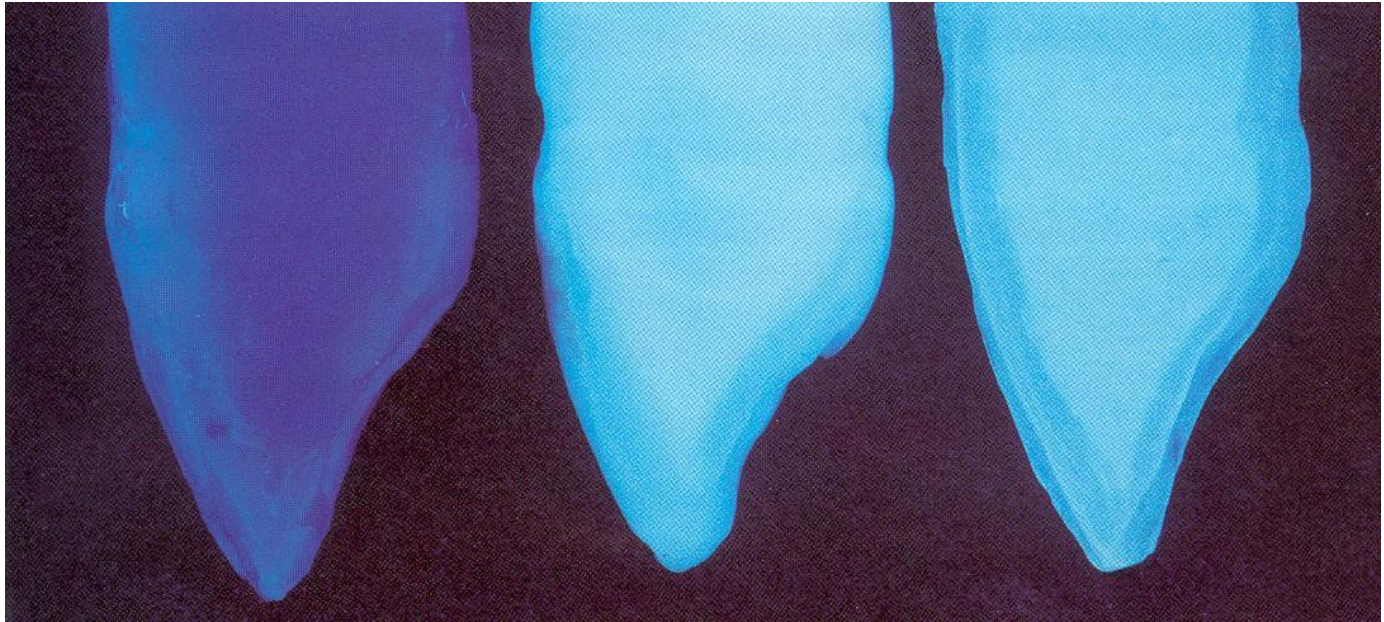


2

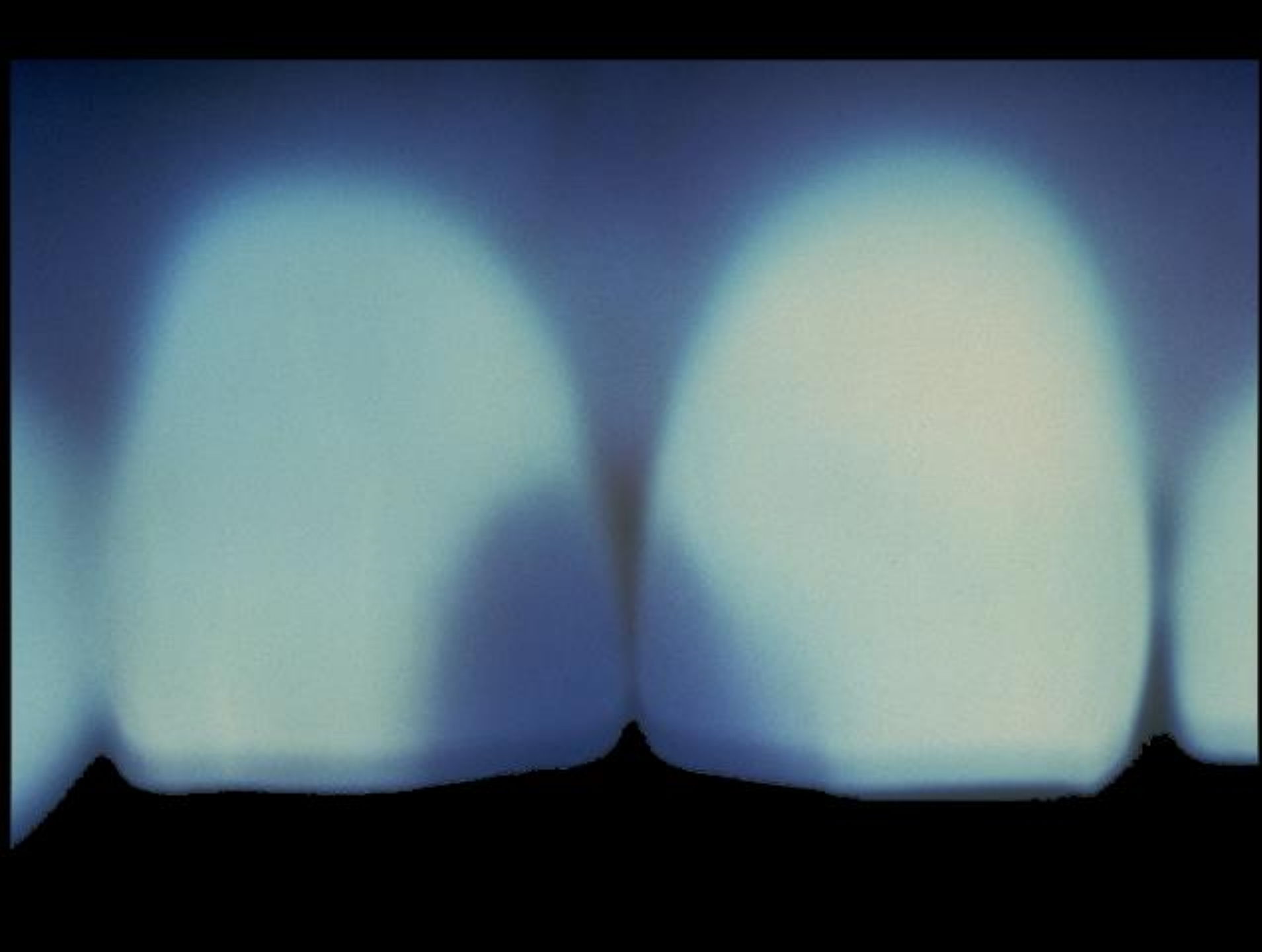


3

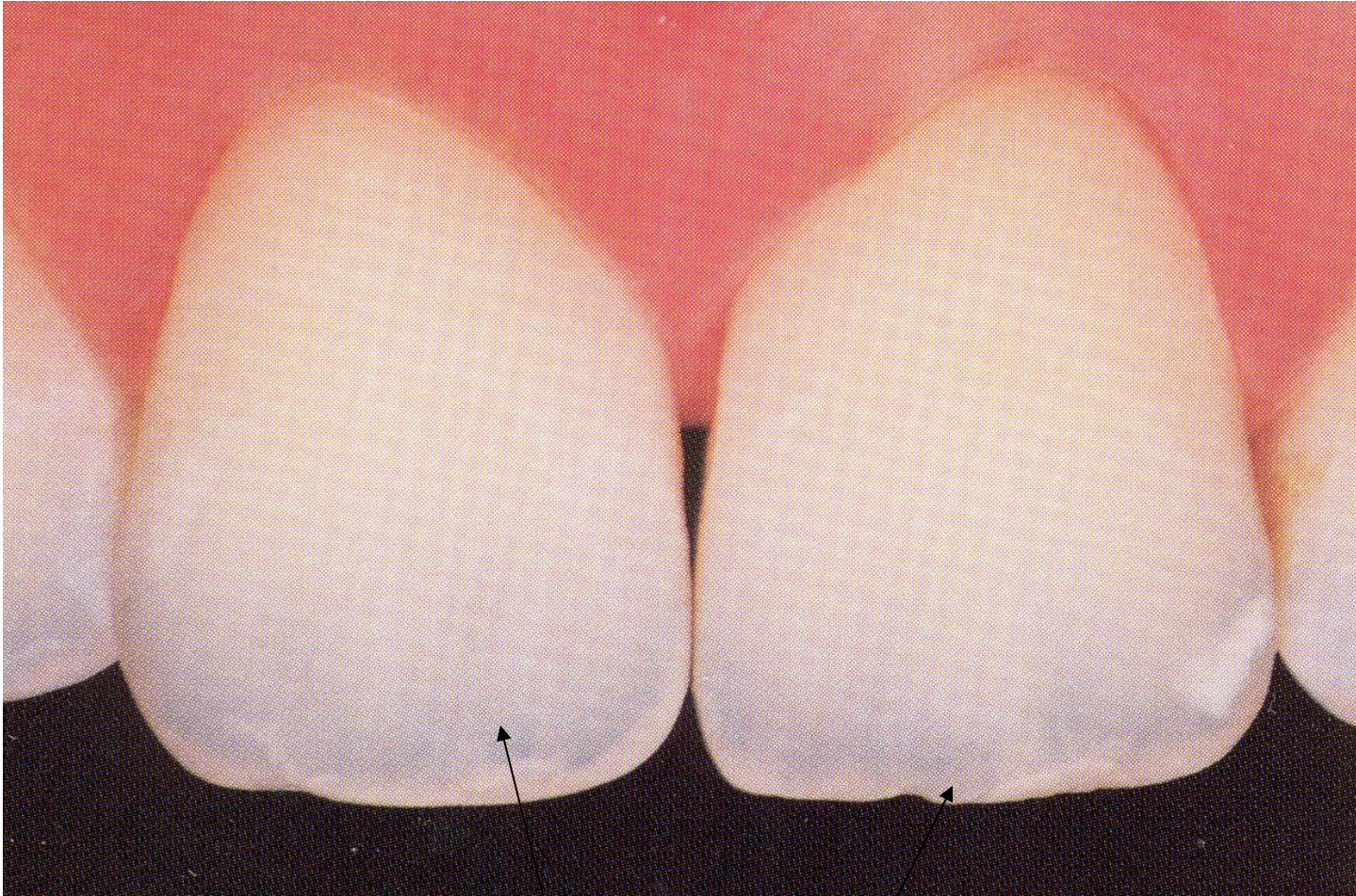
Translucency



Fluorescence

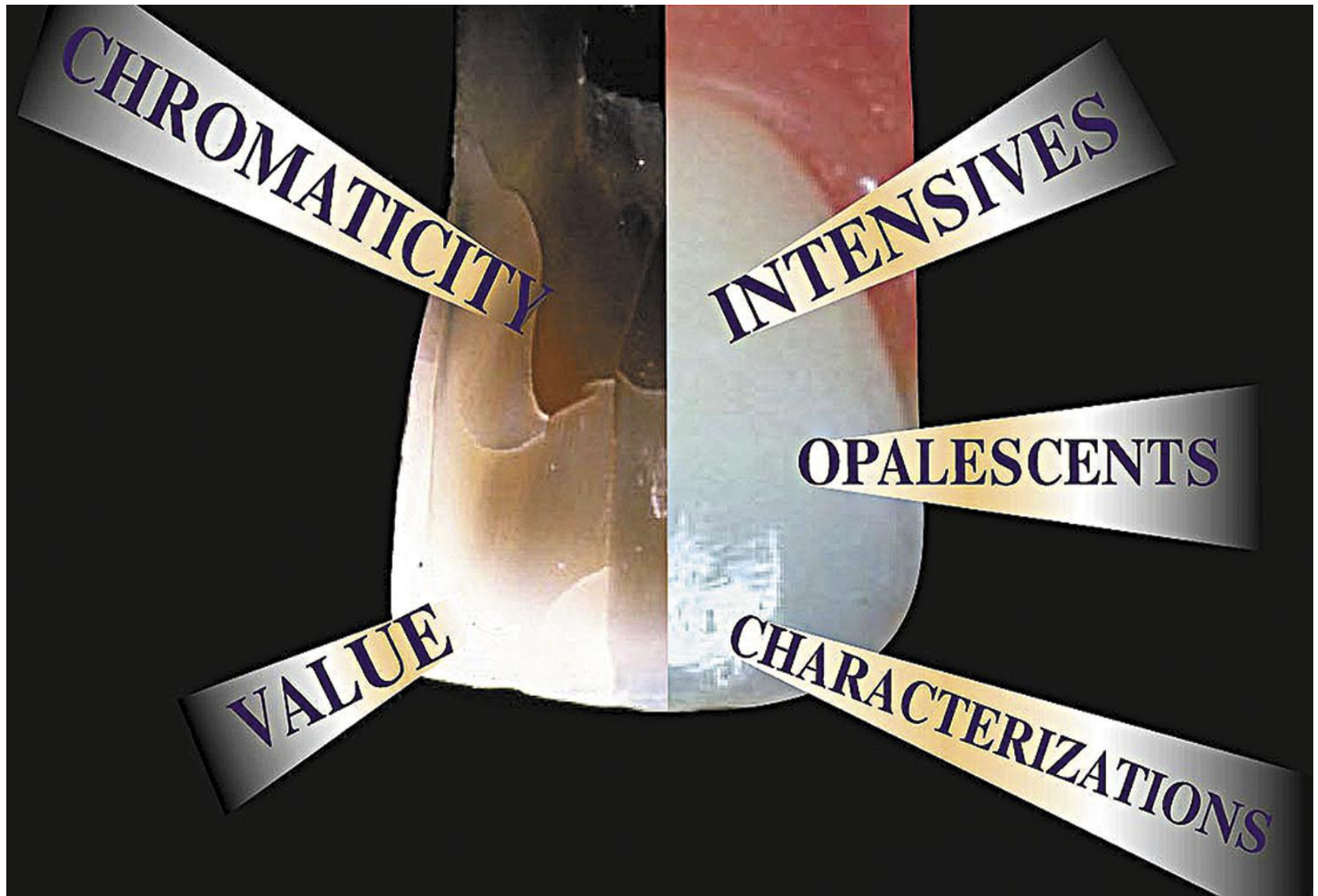






Opalescence





CHROMATICITY

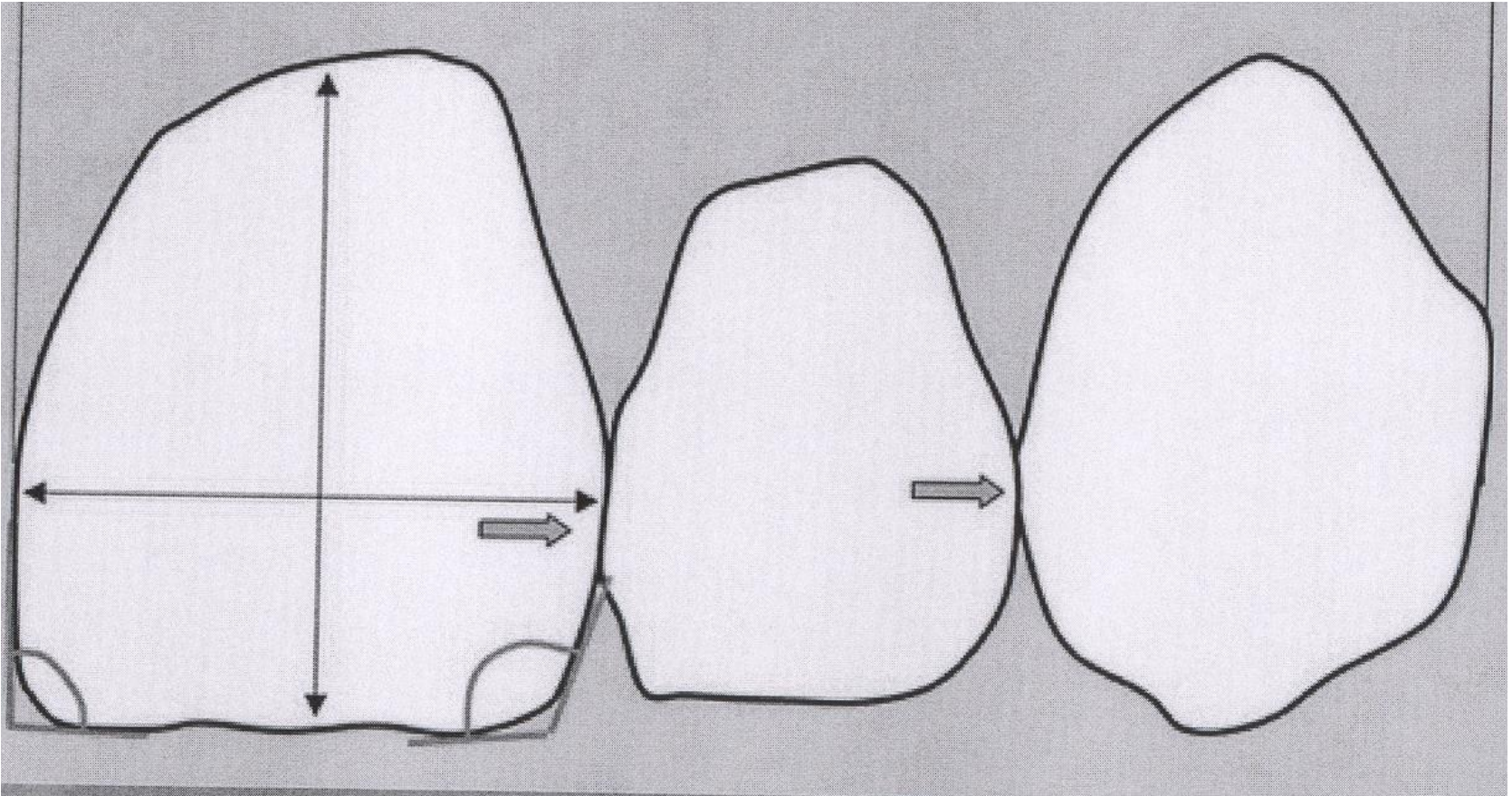
INTENSIVES

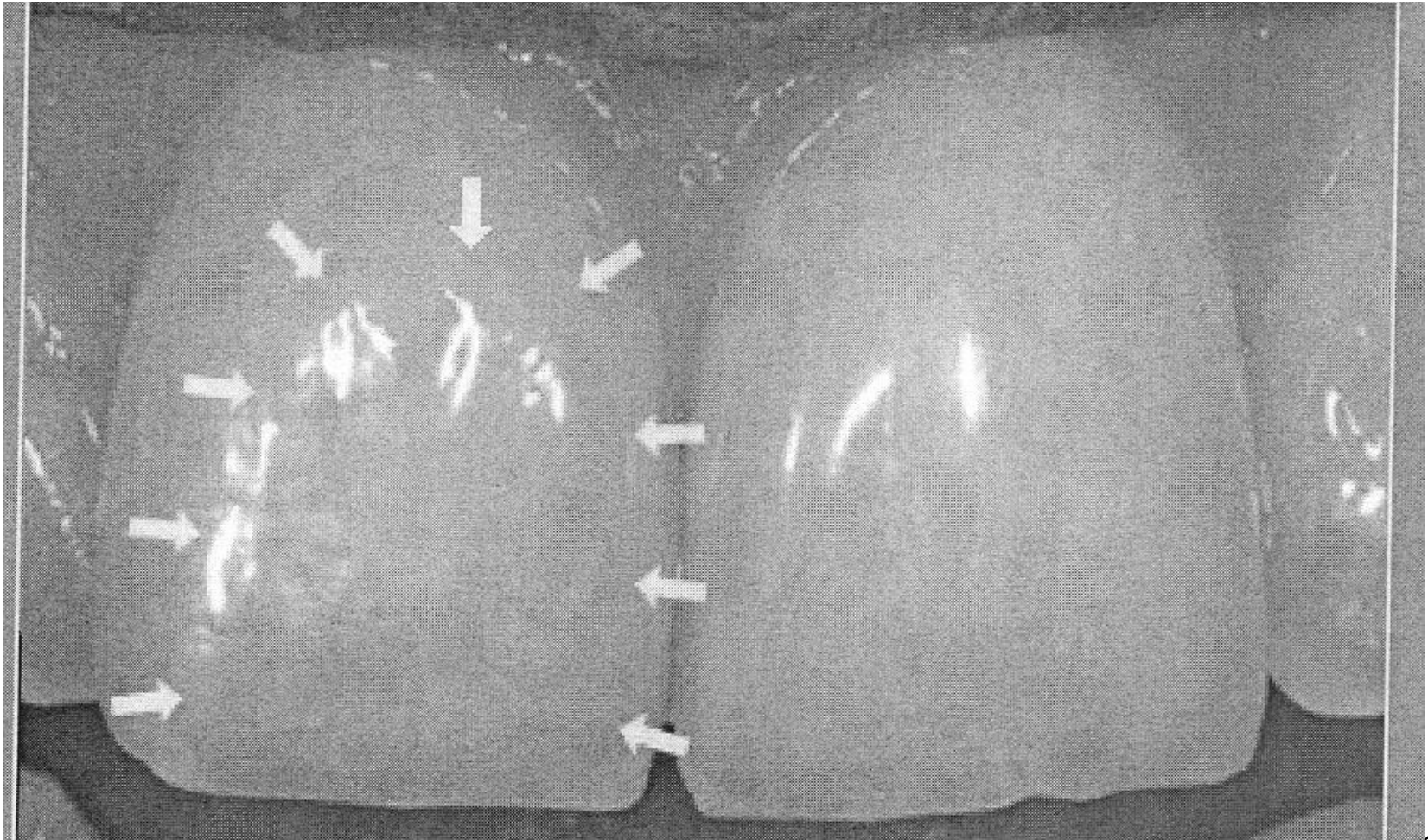
OPALESCENTS

VALUE

CHARACTERIZATIONS

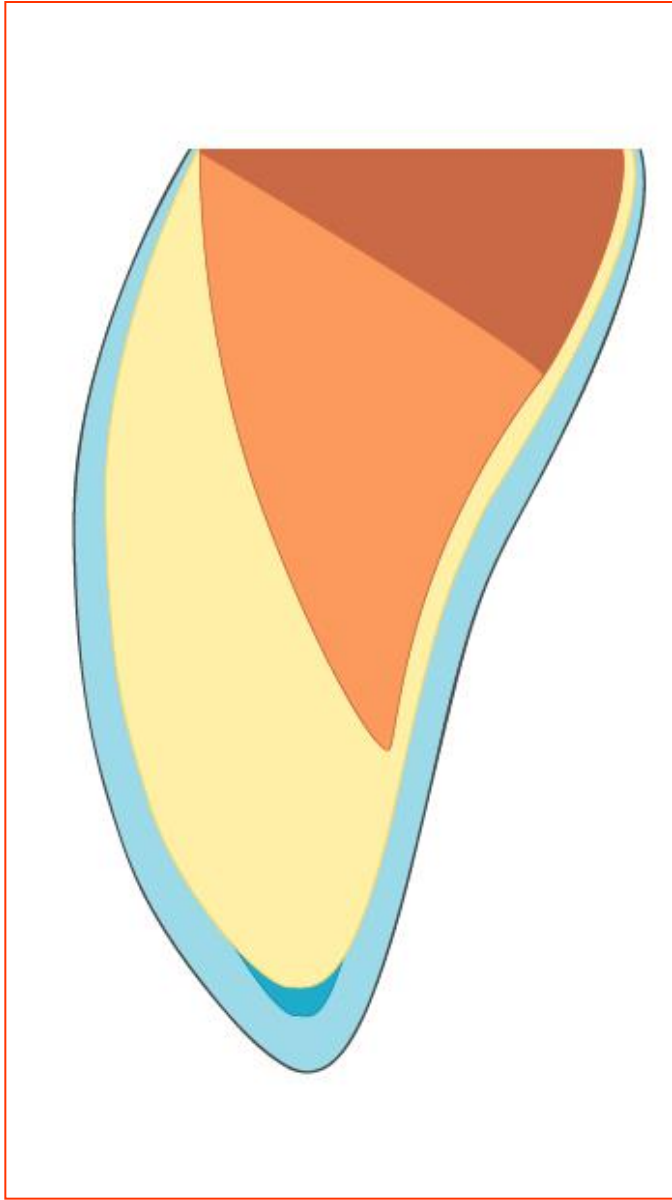
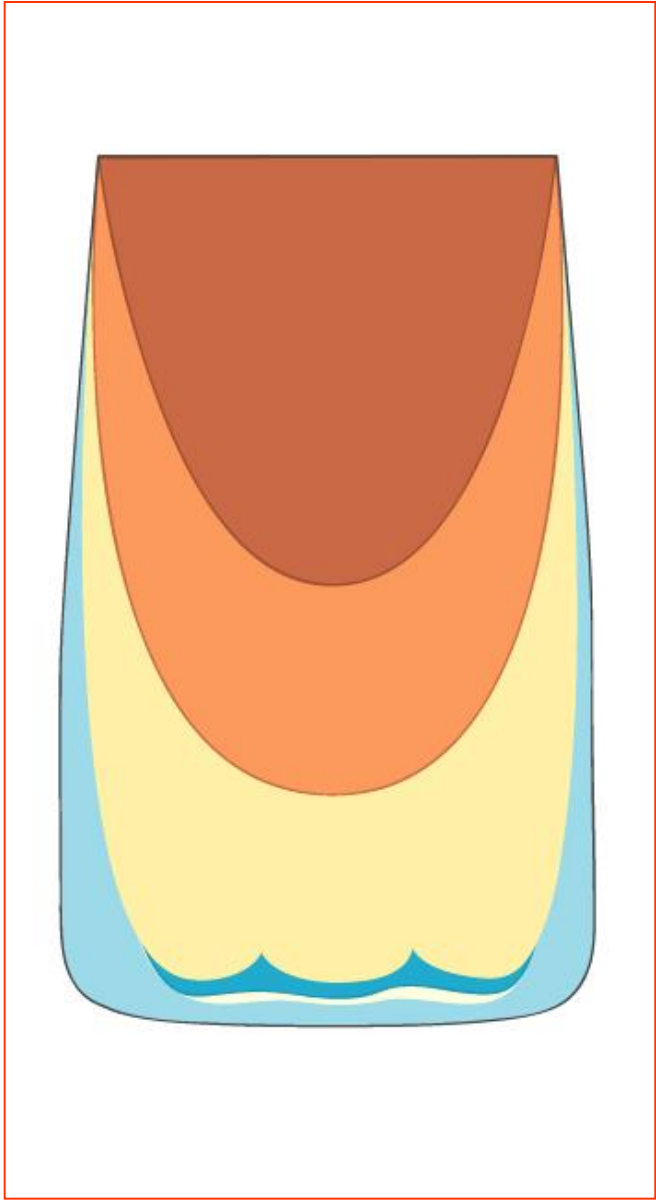
Optical size

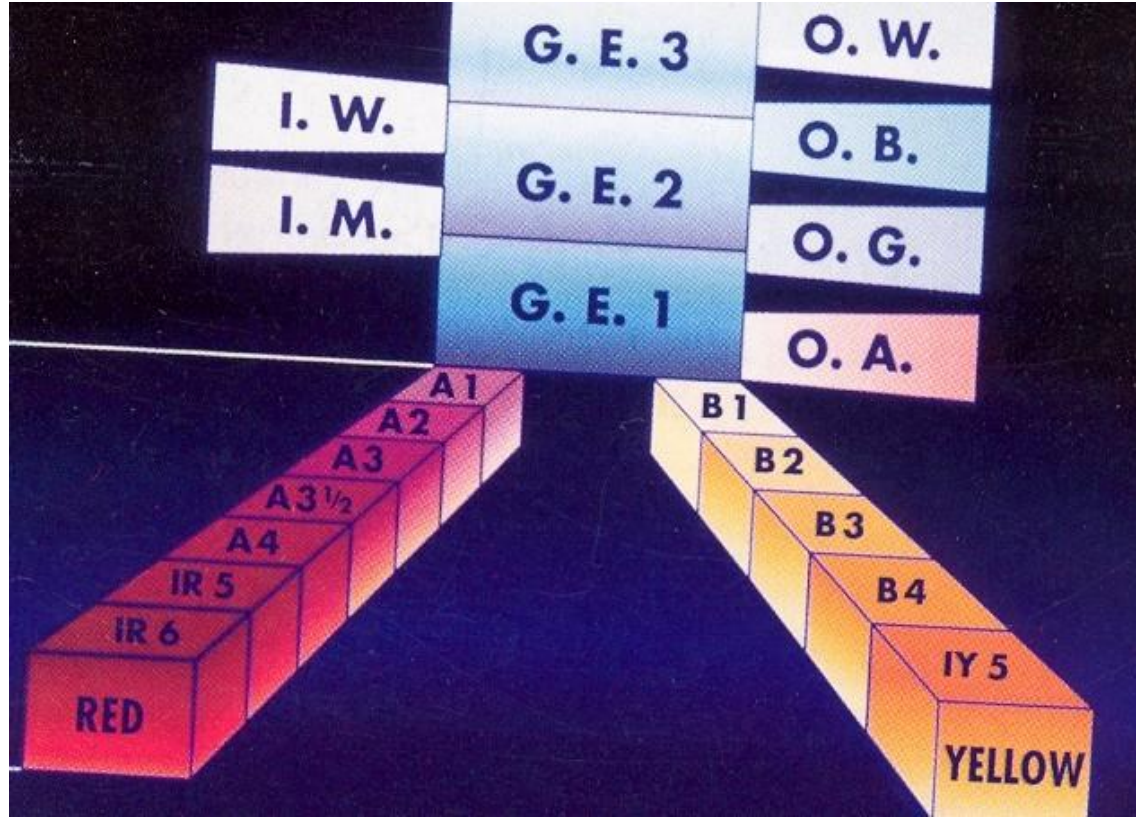




Surface texture







}

**E
N
A
M
E
L

D
E
N
T
I
N**



Chromatic chart

Age

Tooth

Date

BC: 1-2-3-4

V: 1-2-3

I: 1-2-3-4

w-m

O: 1-2-3-4-5

b-g-a

C: 1-2-3-4-5

w-a-y-b

UD 1 2 3 3,5 4 5 6

GE1 GE2 GE3

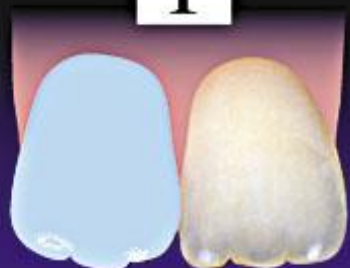
IW IM

OBN OG OA

OW IW IM OA SW SY SB

INTENSIVES

1



2



3



4



OPALESCENTS

1



2



3



4



5



CHARACTERIZATIONS

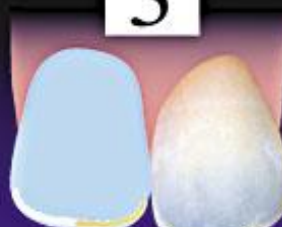
1



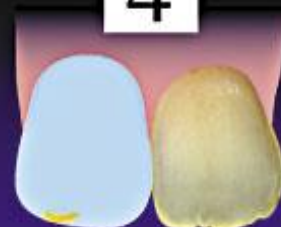
2



3



4

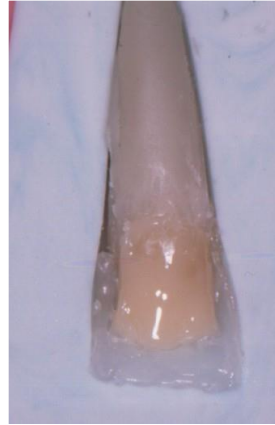


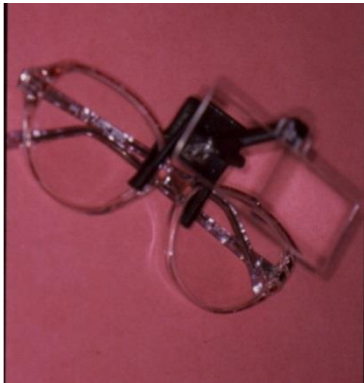
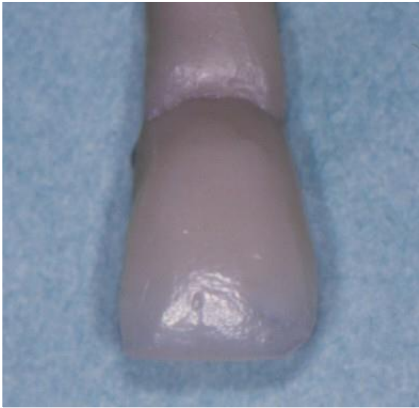
5



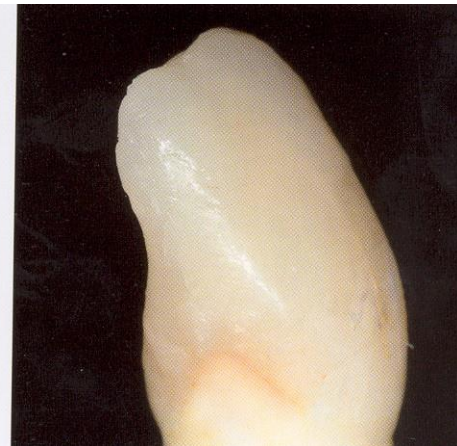
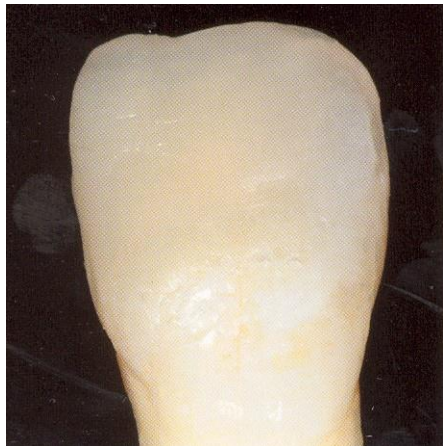


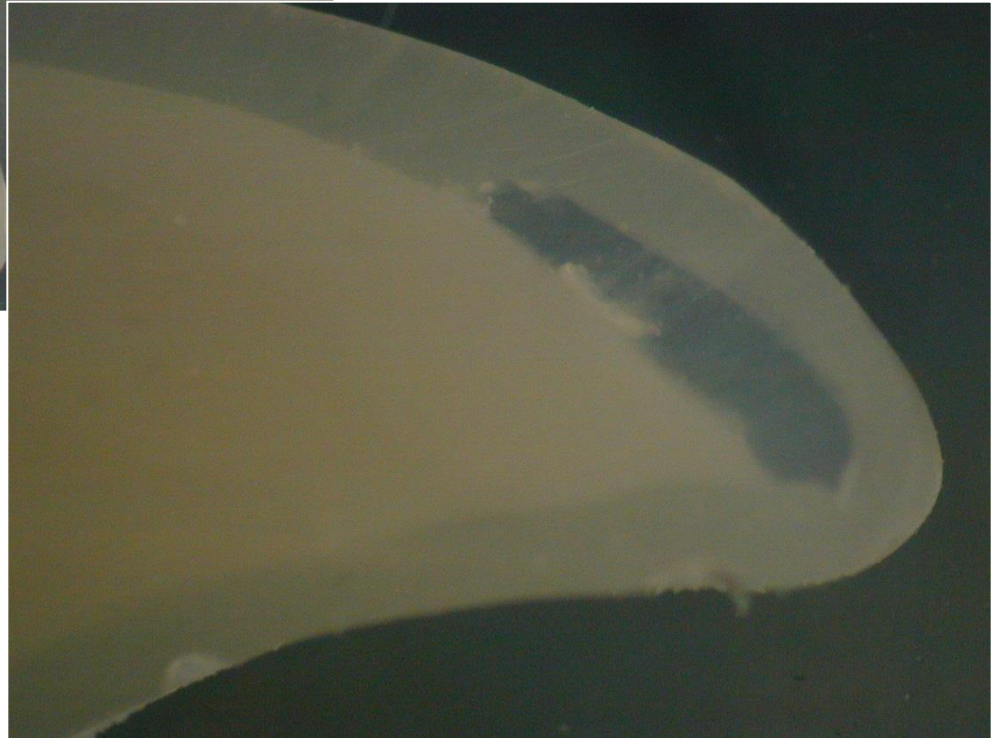
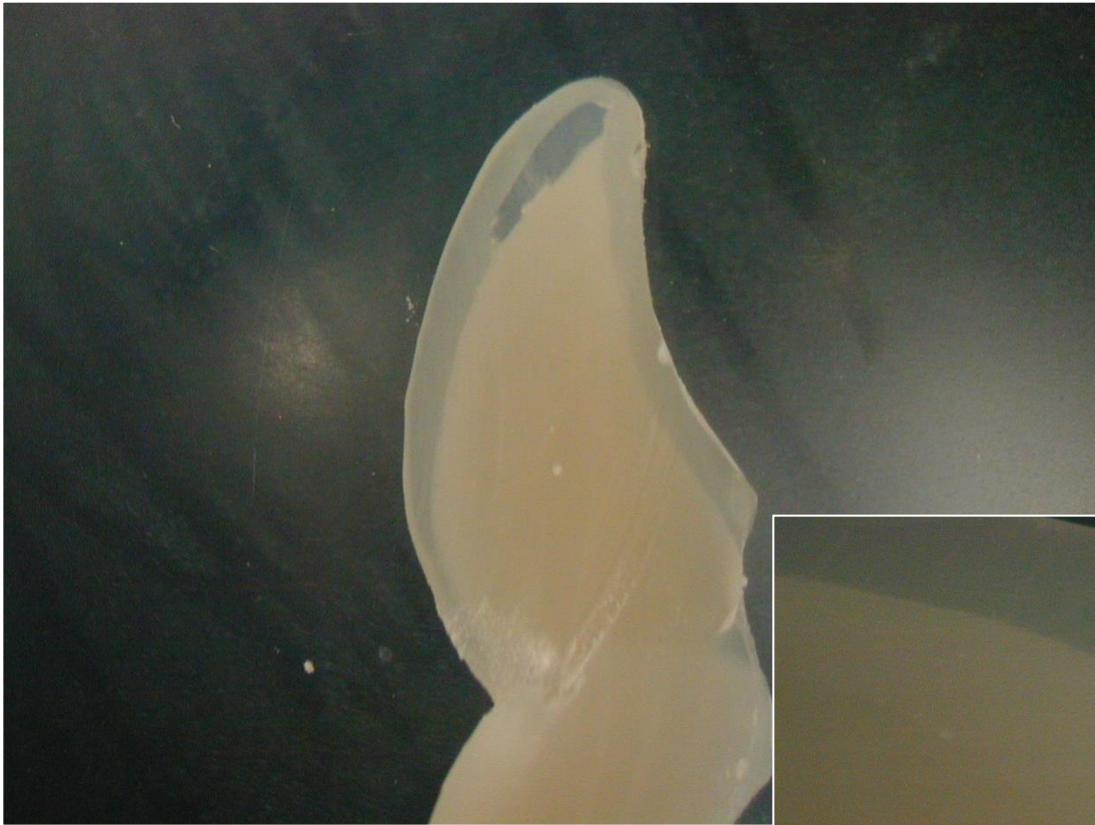


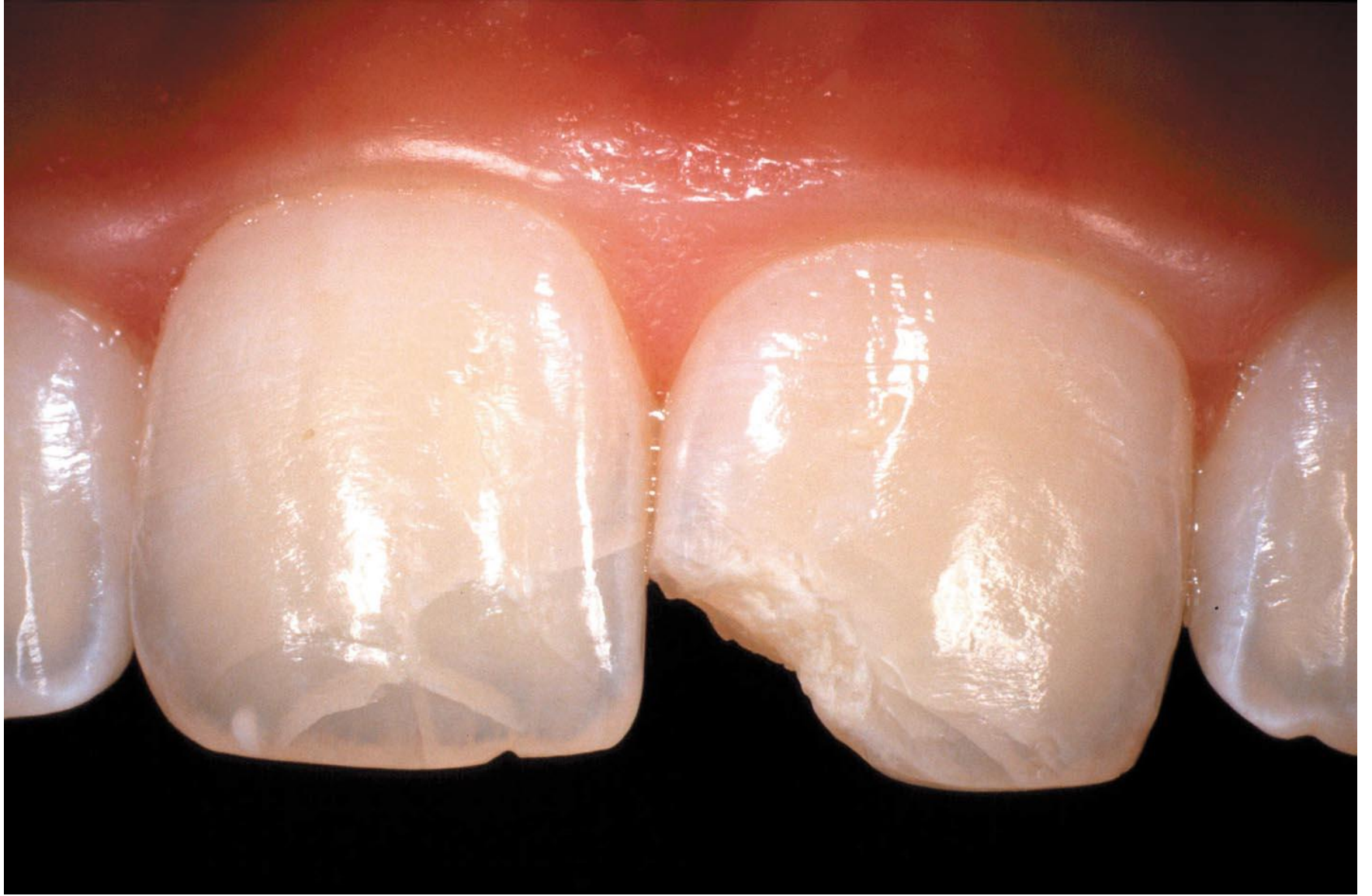














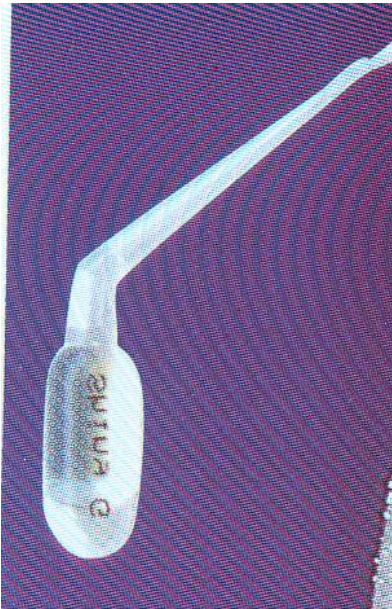






Surface texture, finishing





Polishing

