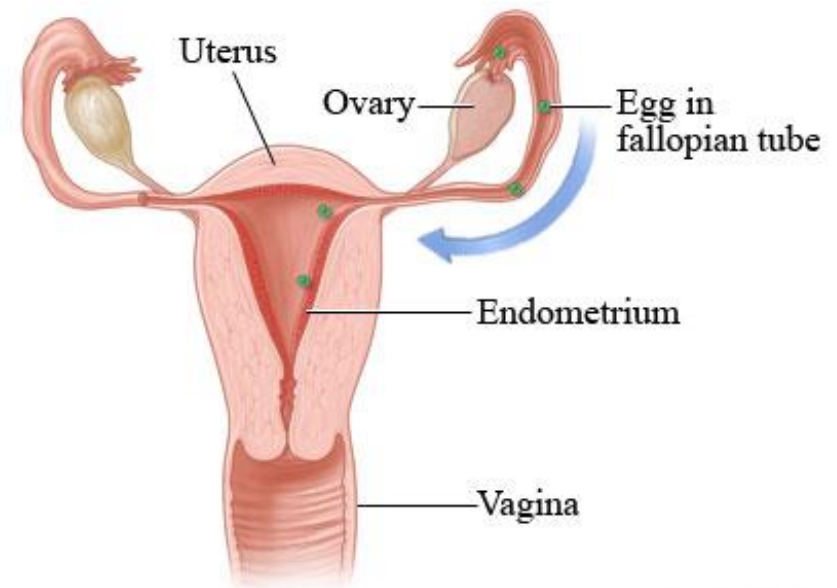


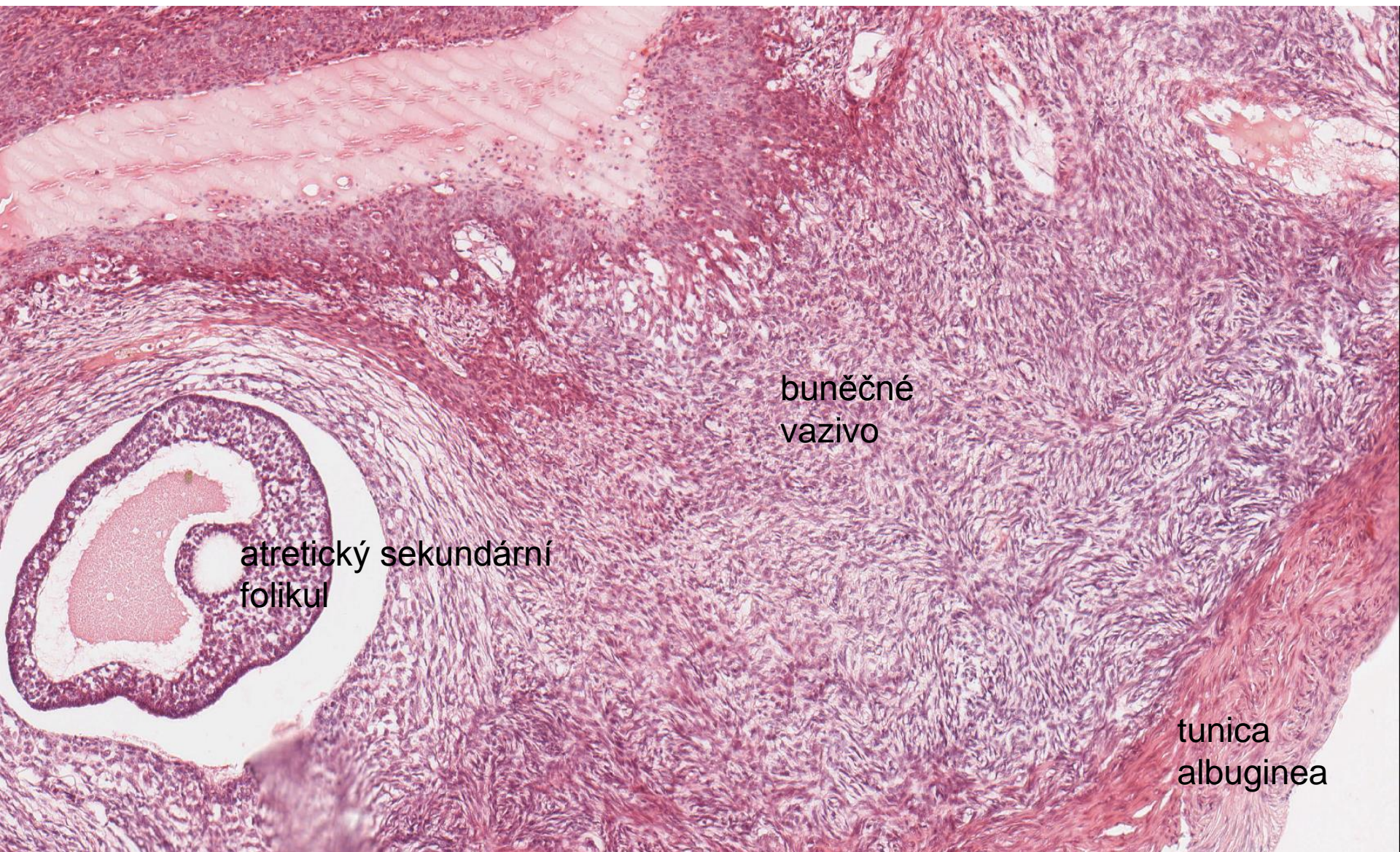


ŽENSKÝ POHLAVNÍ SYSTÉM I

- **vaječník** (ovarium, oophoron)
- **vejcovod** (tuba uterina, tuba Fallopii, salpinx)
- **děloha** (uterus, metra, hystera)



ovarium-člověk

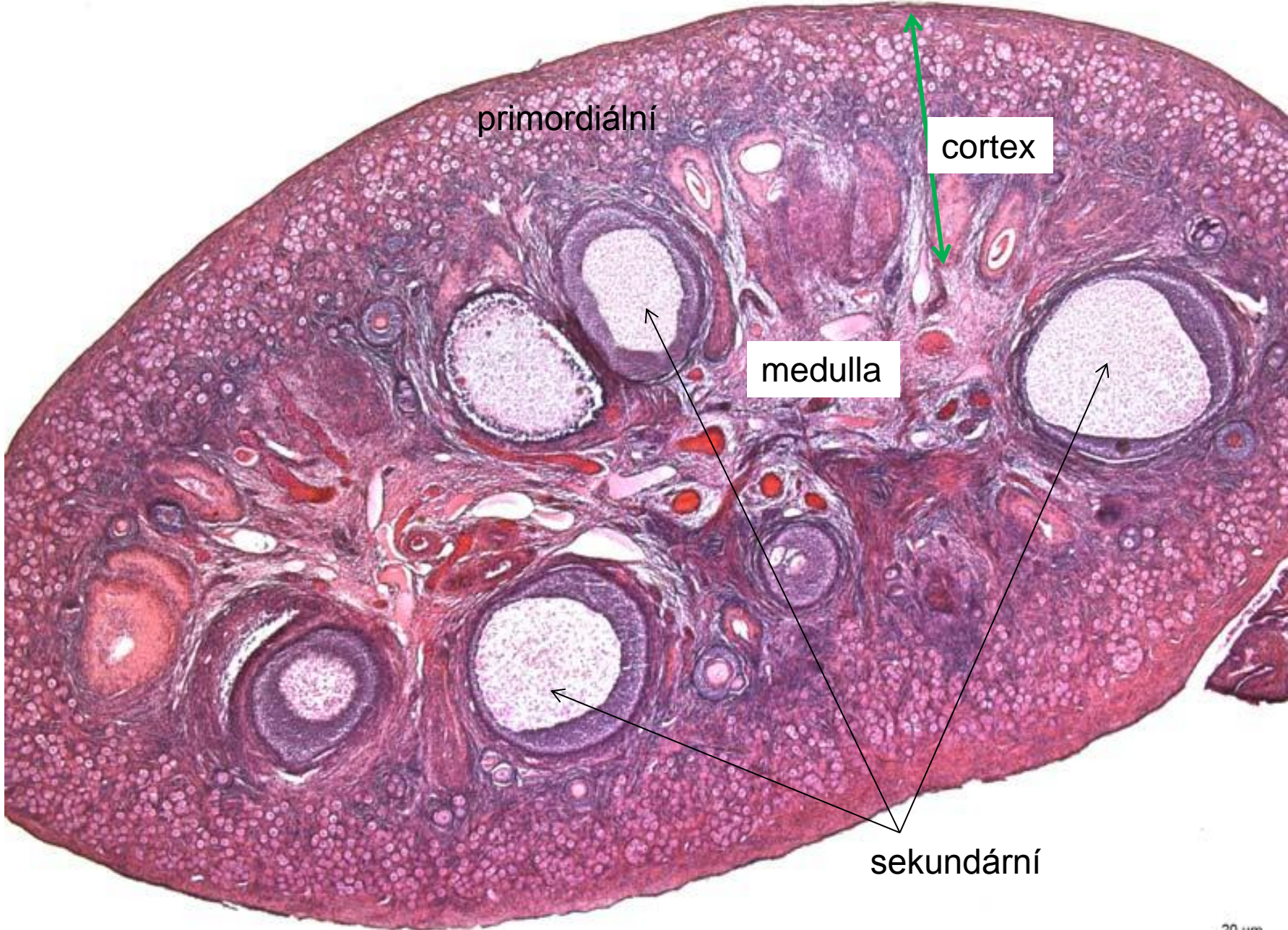


atretický sekundární
folikul

buněčné
vazivo

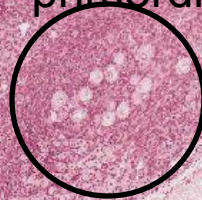
tunica
albuginea

ovarium-kočka



ovarium-kočka

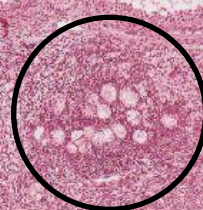
primordiální



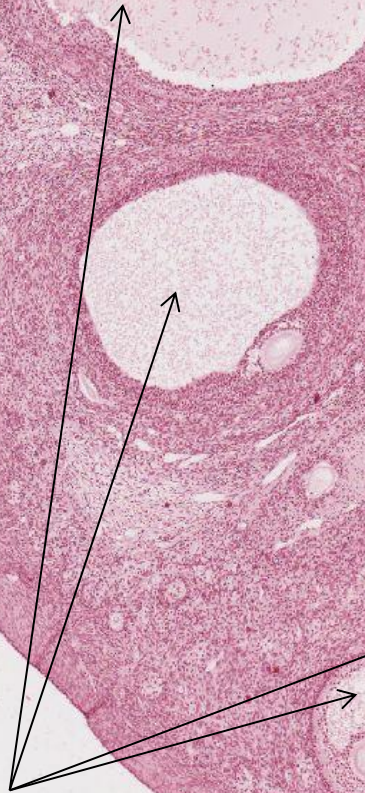
atretický



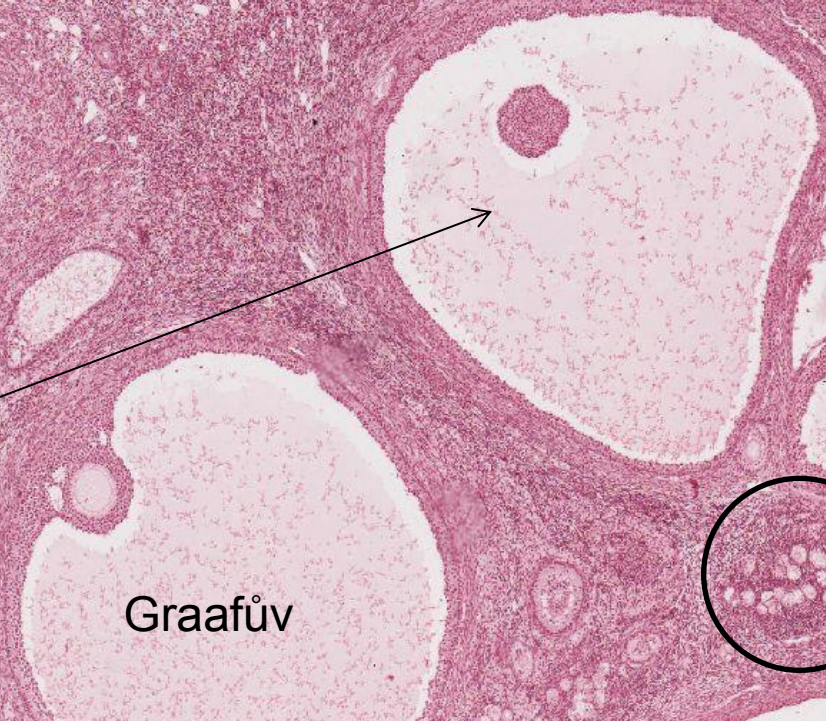
primordiální



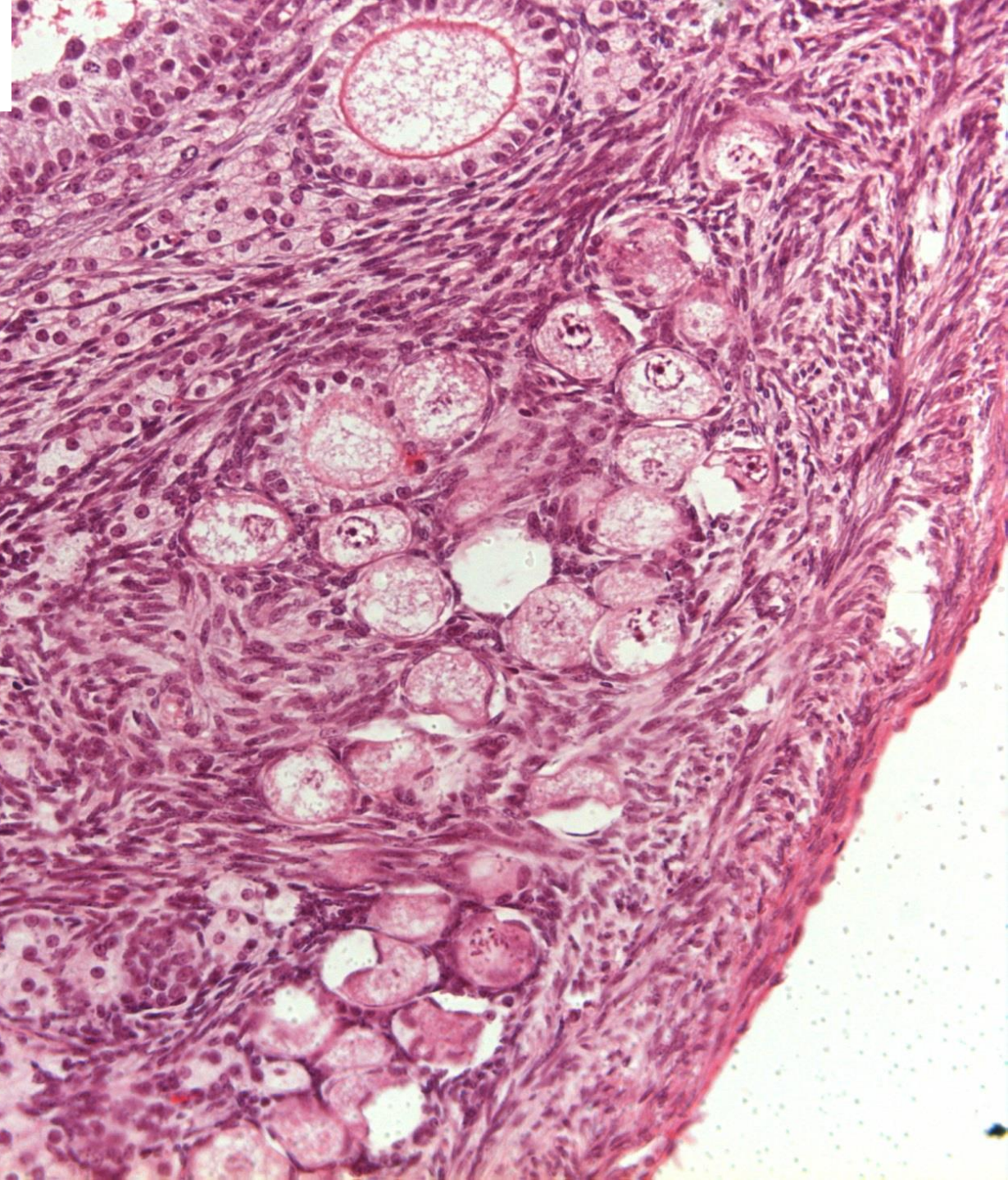
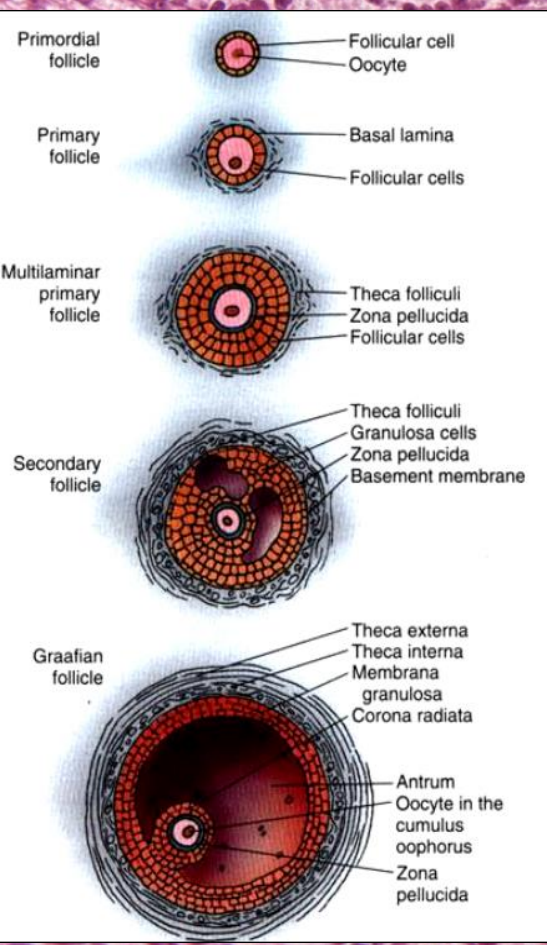
sekundární



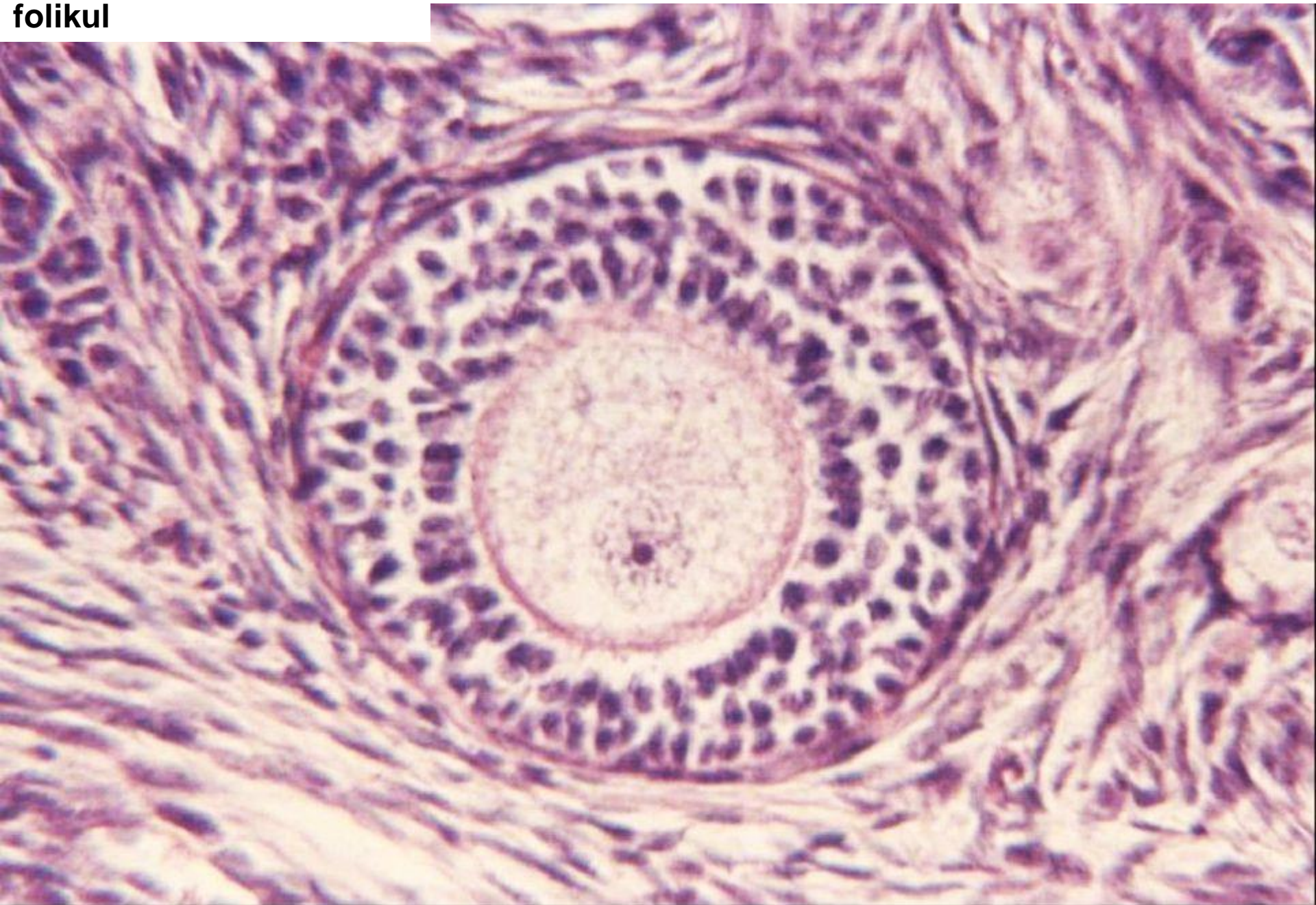
Graafův



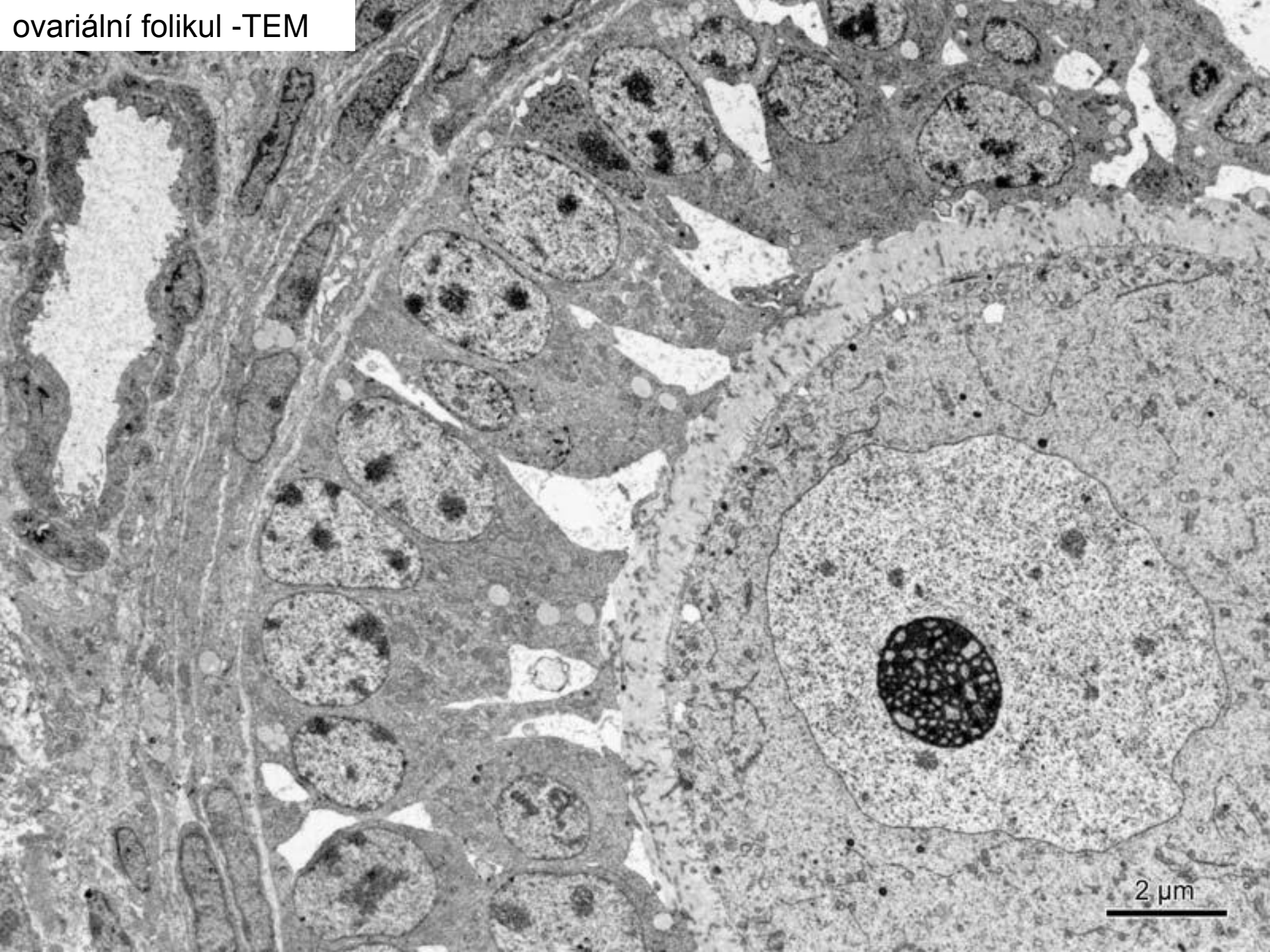
primordiální a primární unilaminární folikuly



**primární multilaminární
folikul**

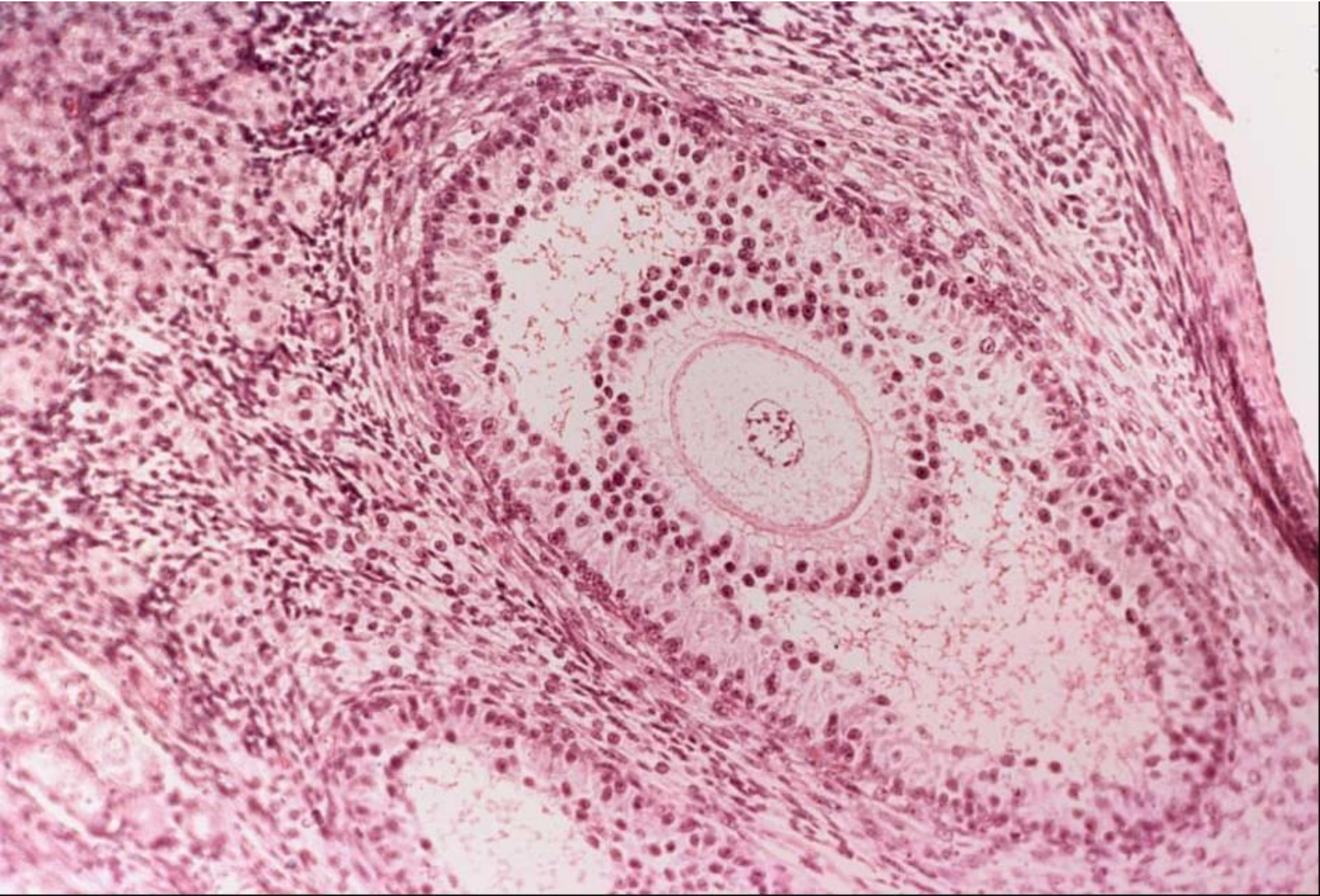


ovariální folikul -TEM

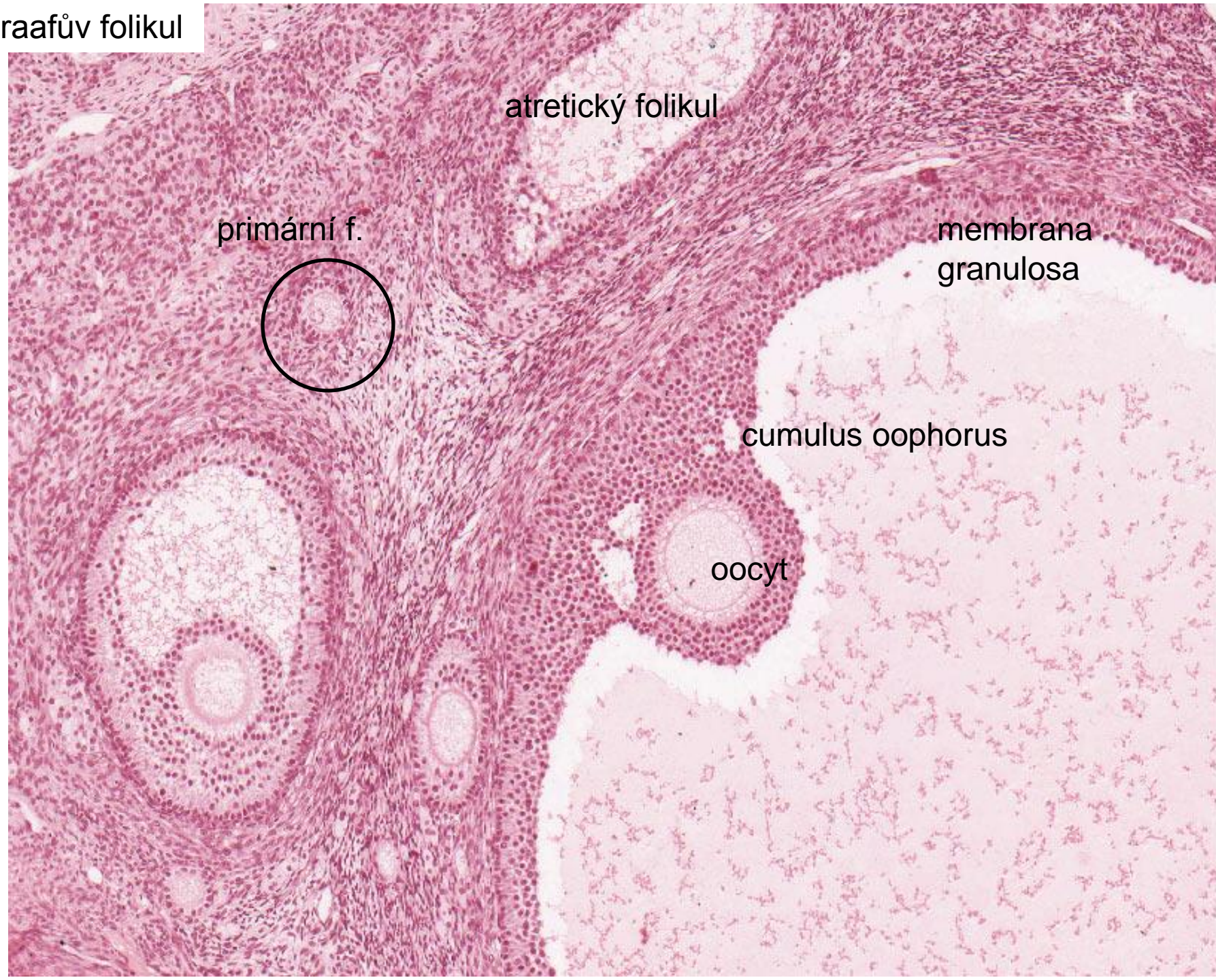


2 μm

sekundární folikul

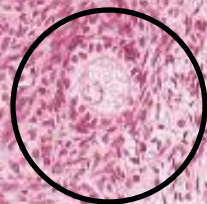


Graafův folikul



atretický folikul

primární f.



membrana
granulosa

cumulus oophorus

oocyt

zárodečný epitel

tunica albuginea

theca f. externa

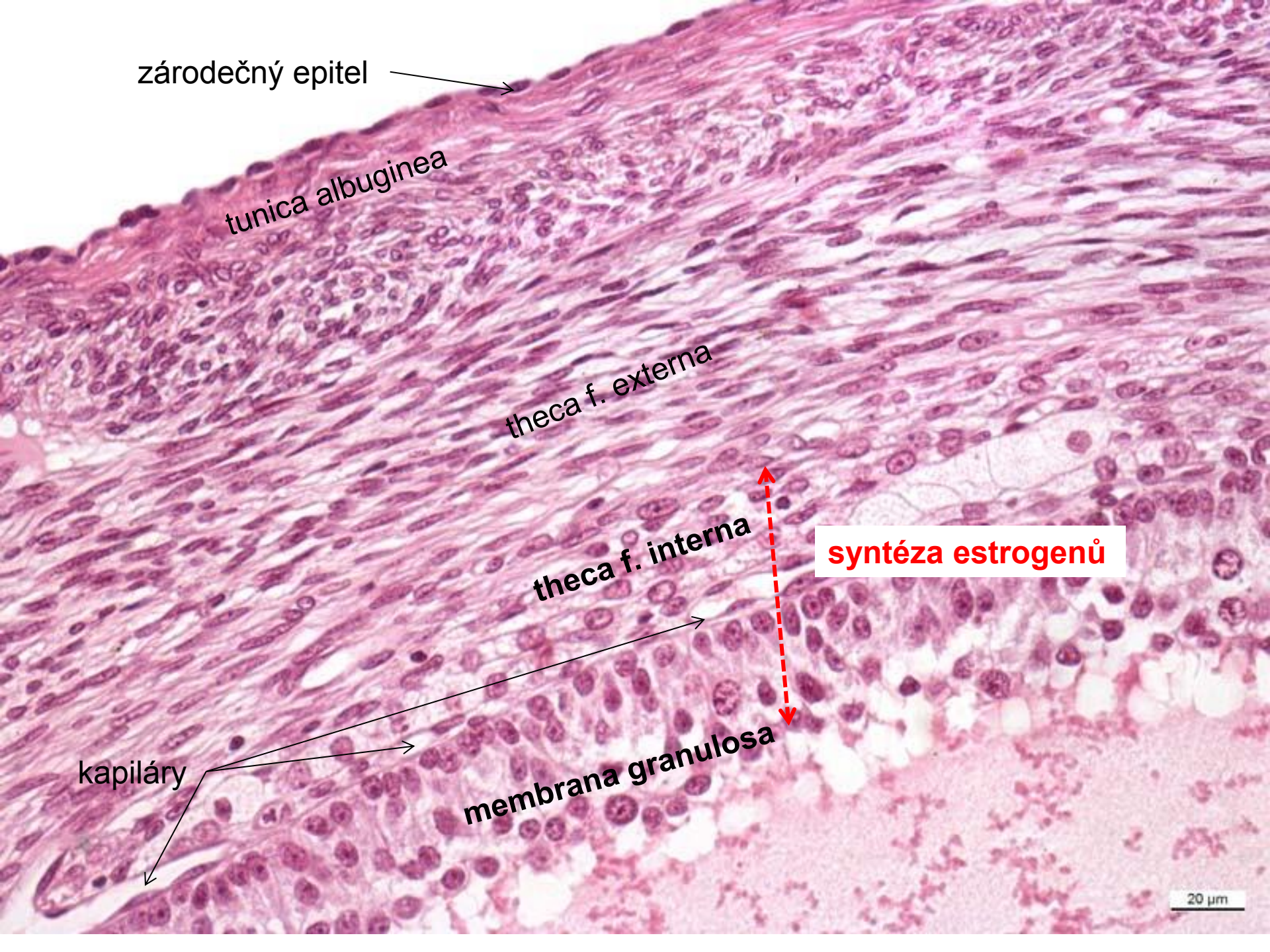
theca f. interna

syntéza estrogenů

kapiláry

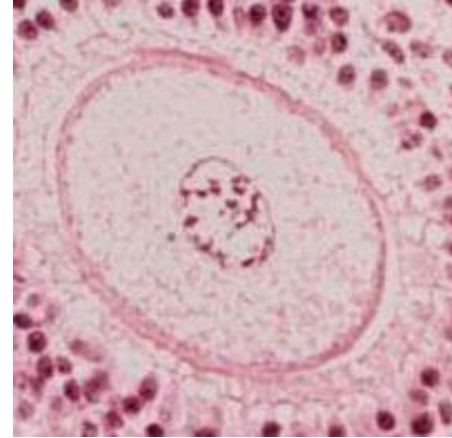
membrana granulosa

20 μm



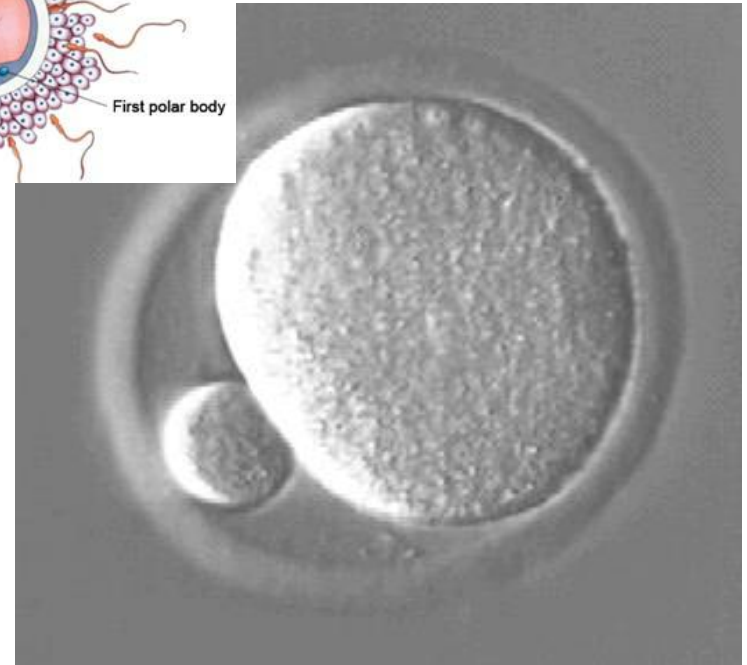
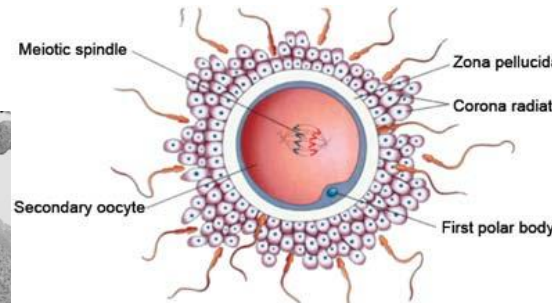
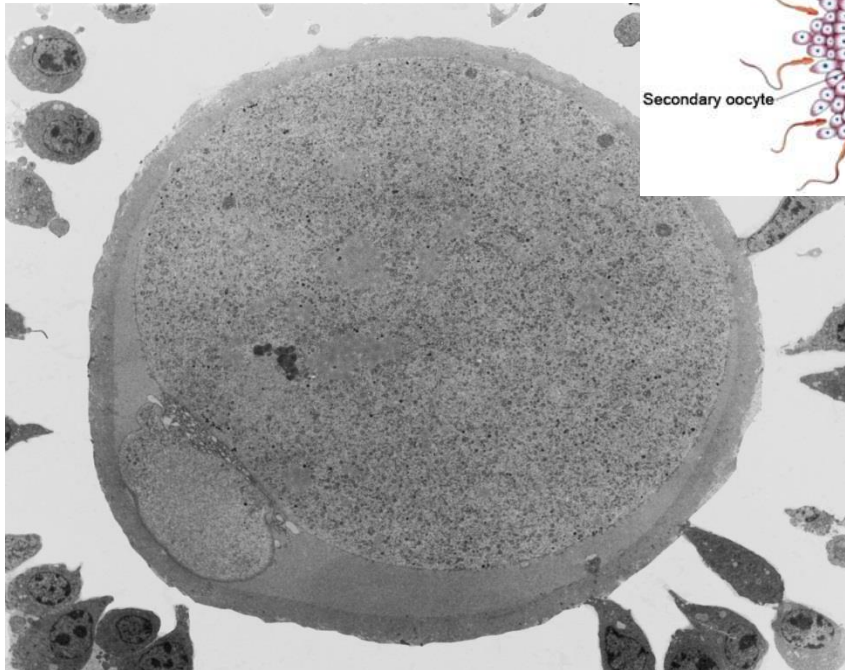
oocyt v průběhu 1. meiotického dělení

30 μm



130 μm

oocyt během ovulace



ovarium-corpora luteum



ovarium-corpus luteum

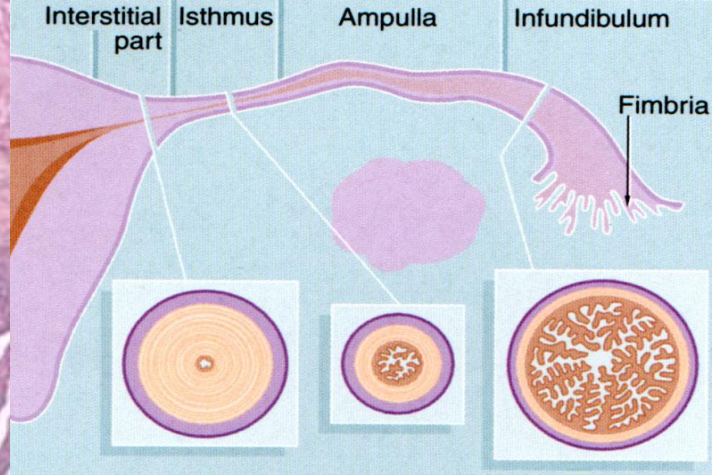


krevní
koagulum

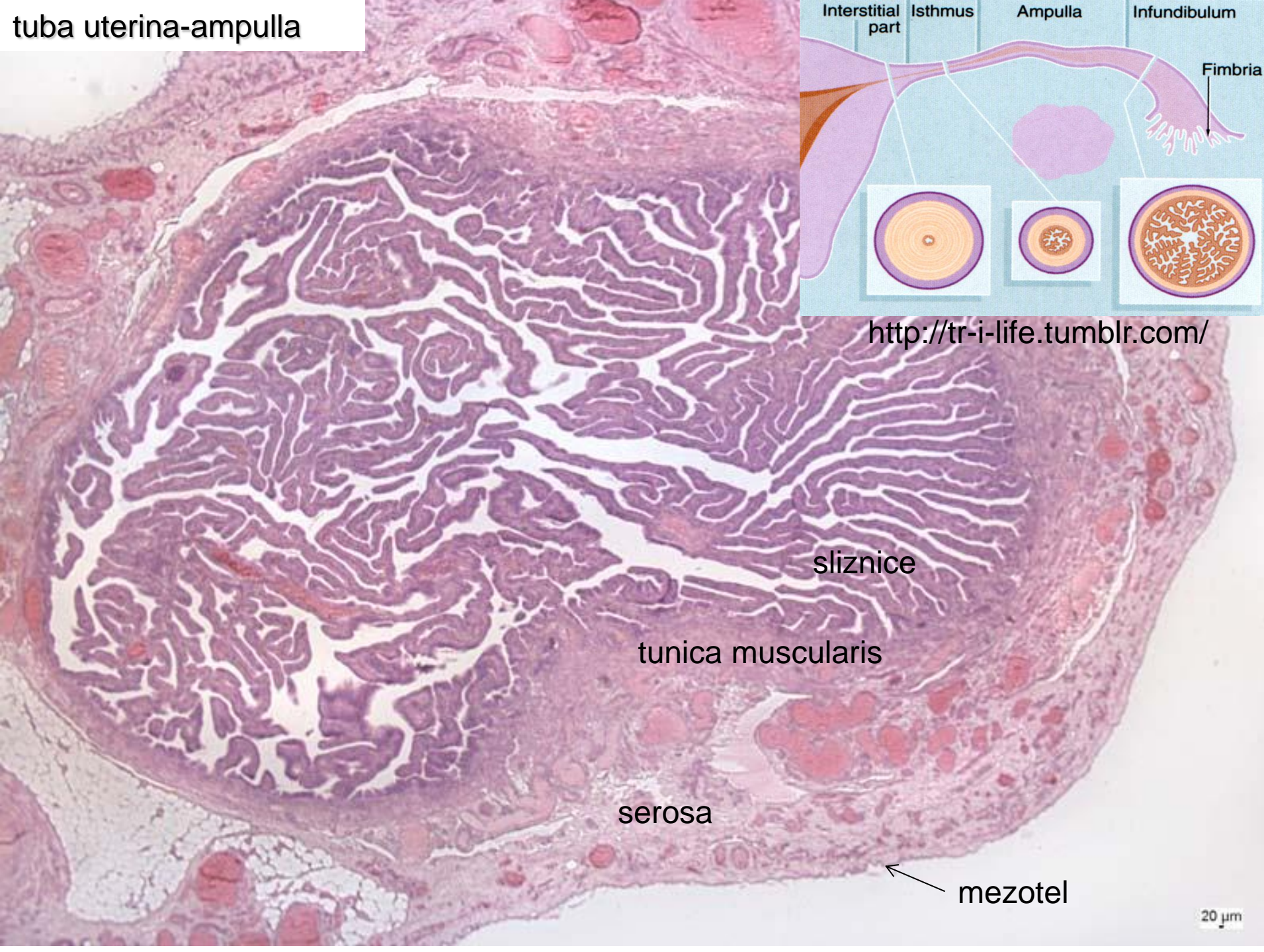
granuloza-
luteinové buňky

theca-luteinové
buňky

tuba uterina-ampulla



<http://tr-i-life.tumblr.com/>



sliznice

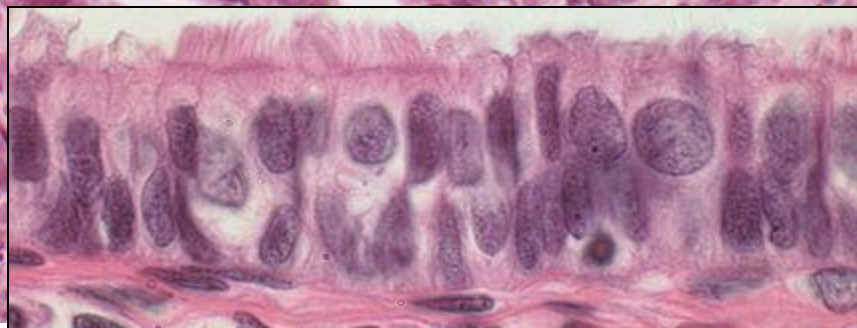
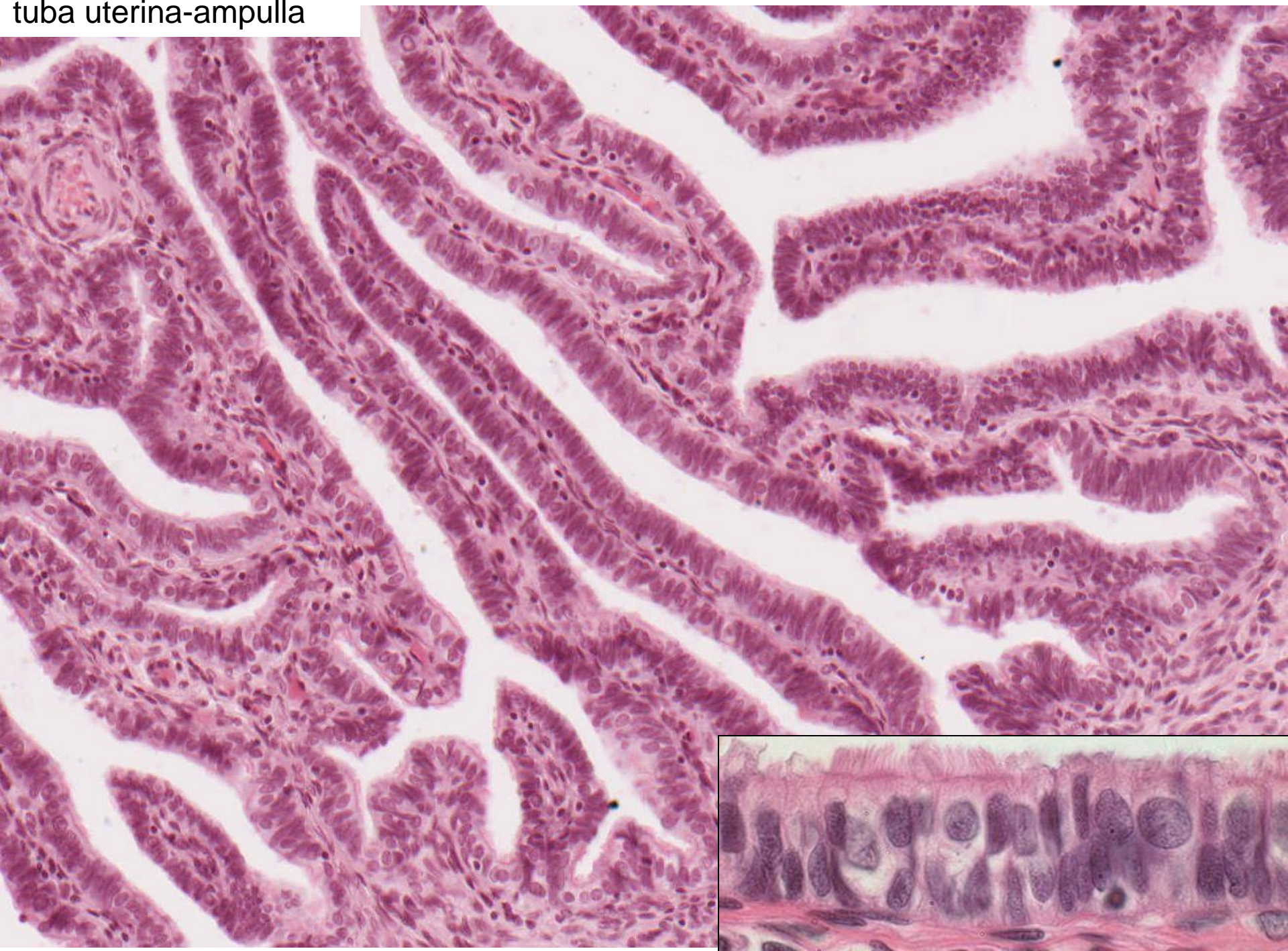
tunica muscularis

serosa

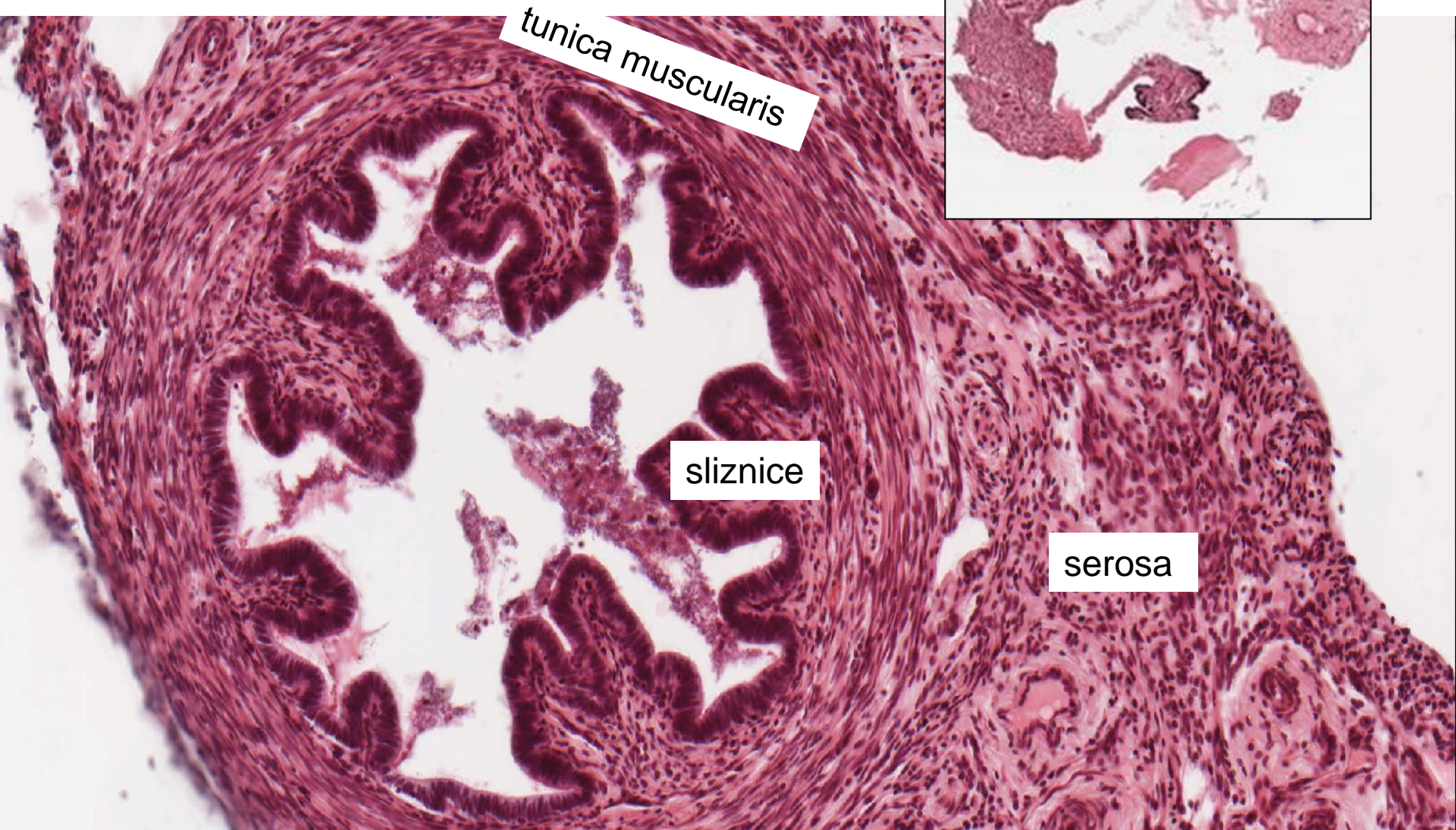
mezotel

20 μm

tuba uterina-ampulla



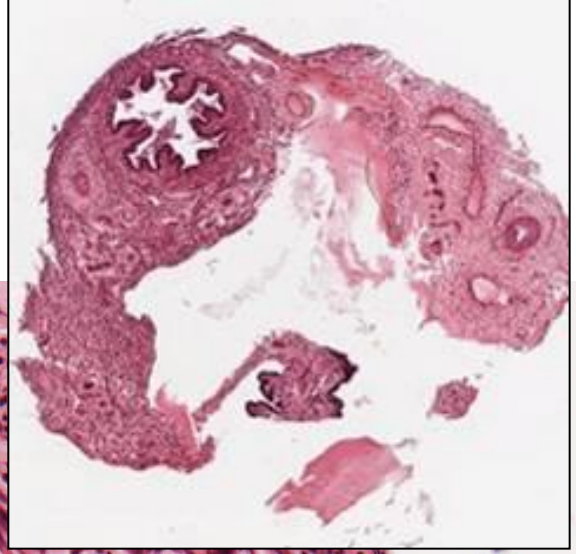
tuba uterina-isthmus



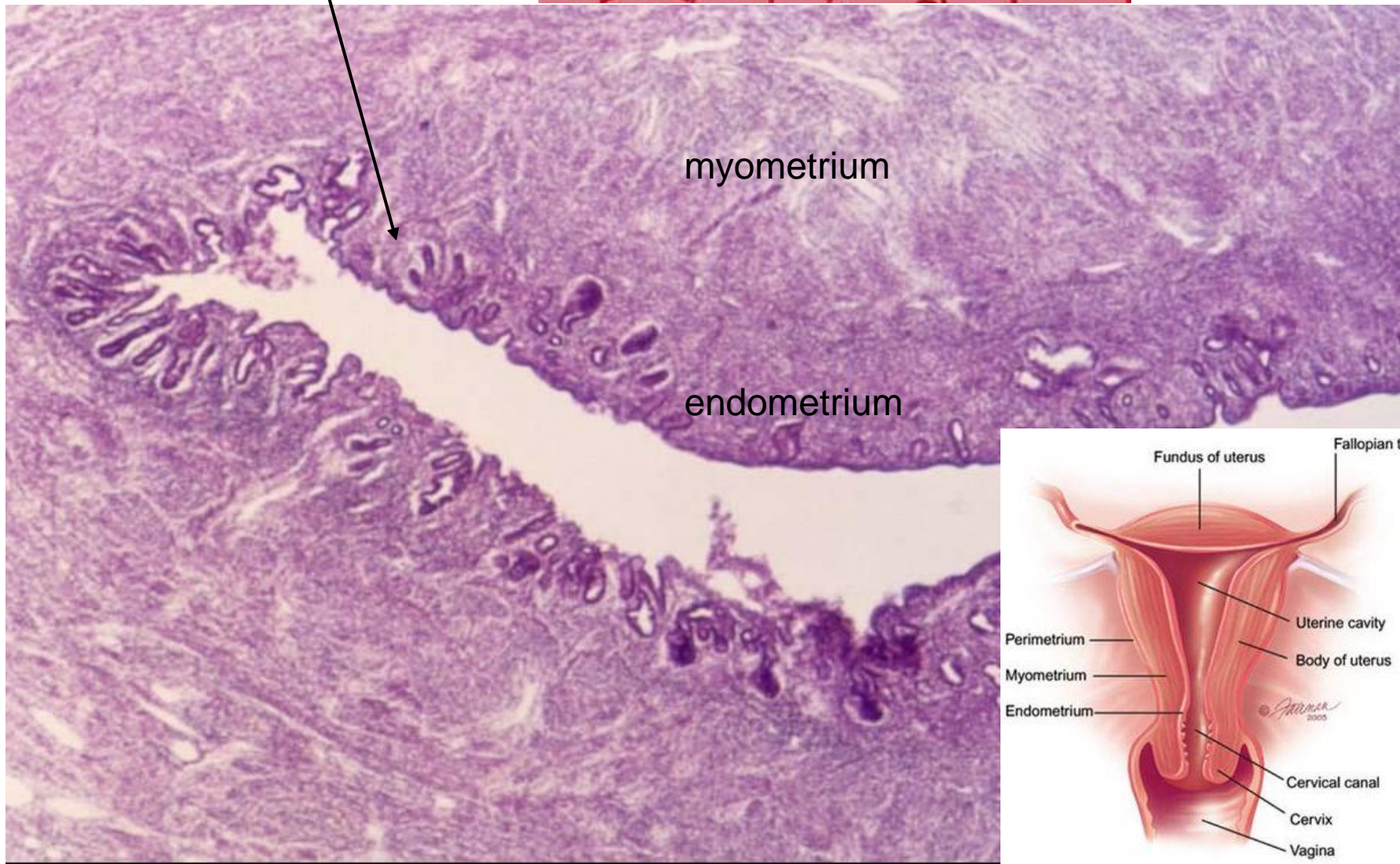
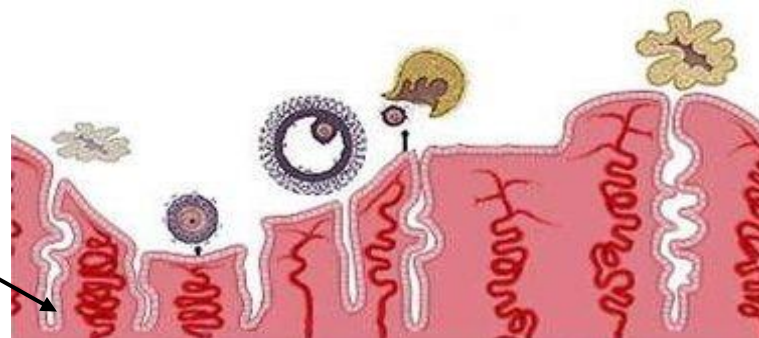
tunica muscularis

sliznice

serosa

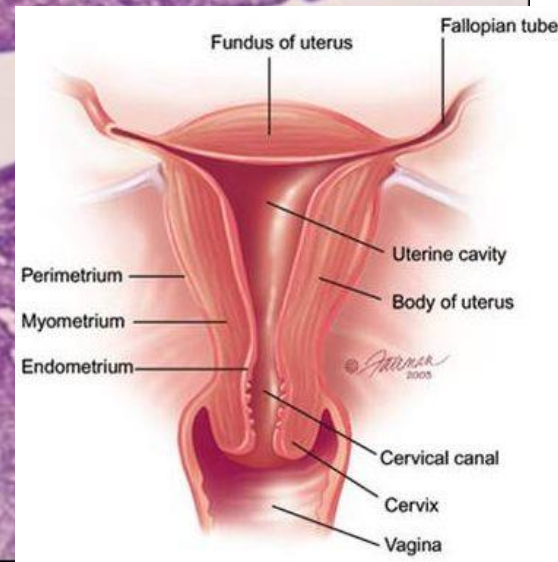


Ovariální a menstruační cyklus



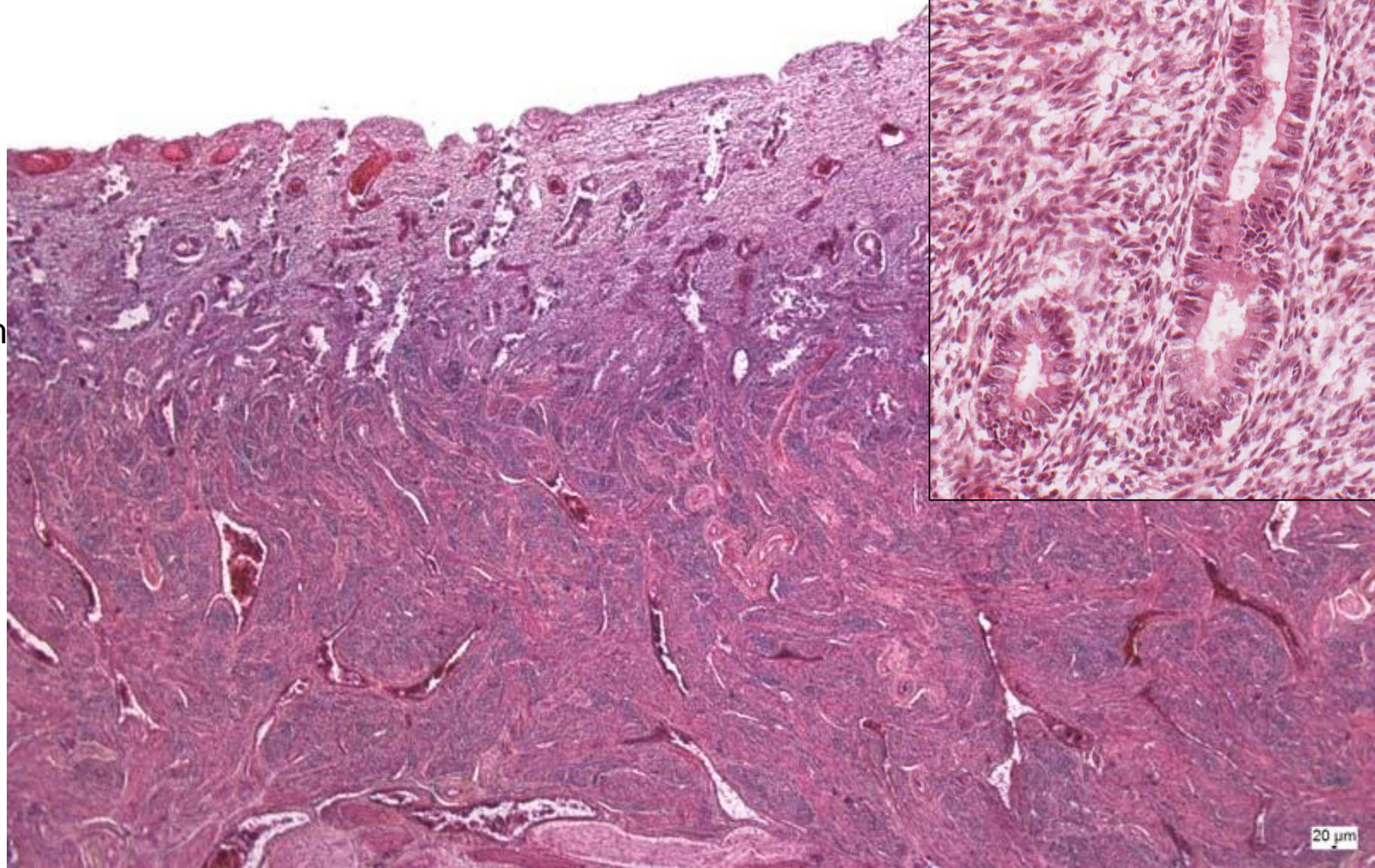
myometrium

endometrium



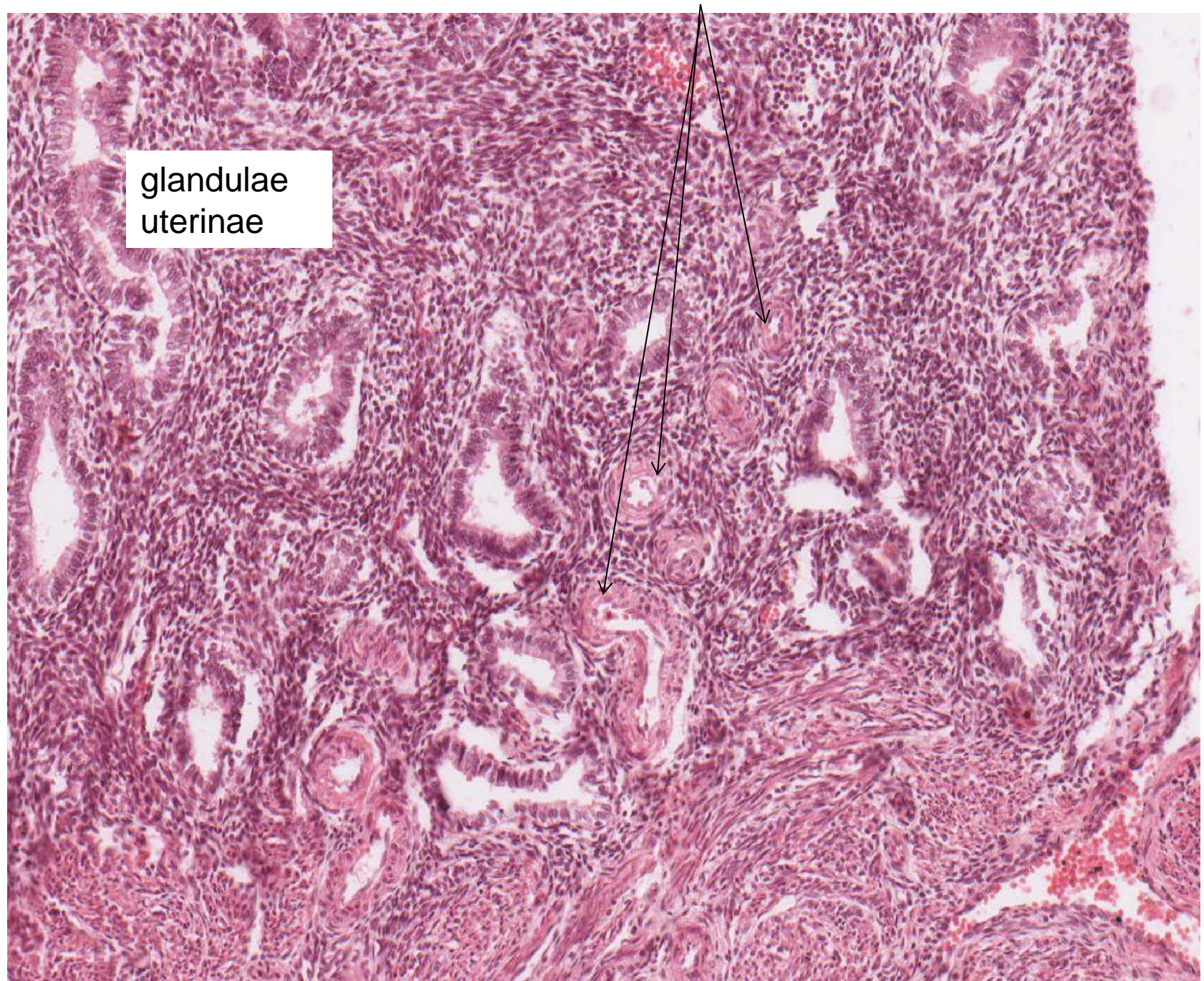
**Endometrium – proliferační fáze
– glandulae uterinae**

3-4
mm



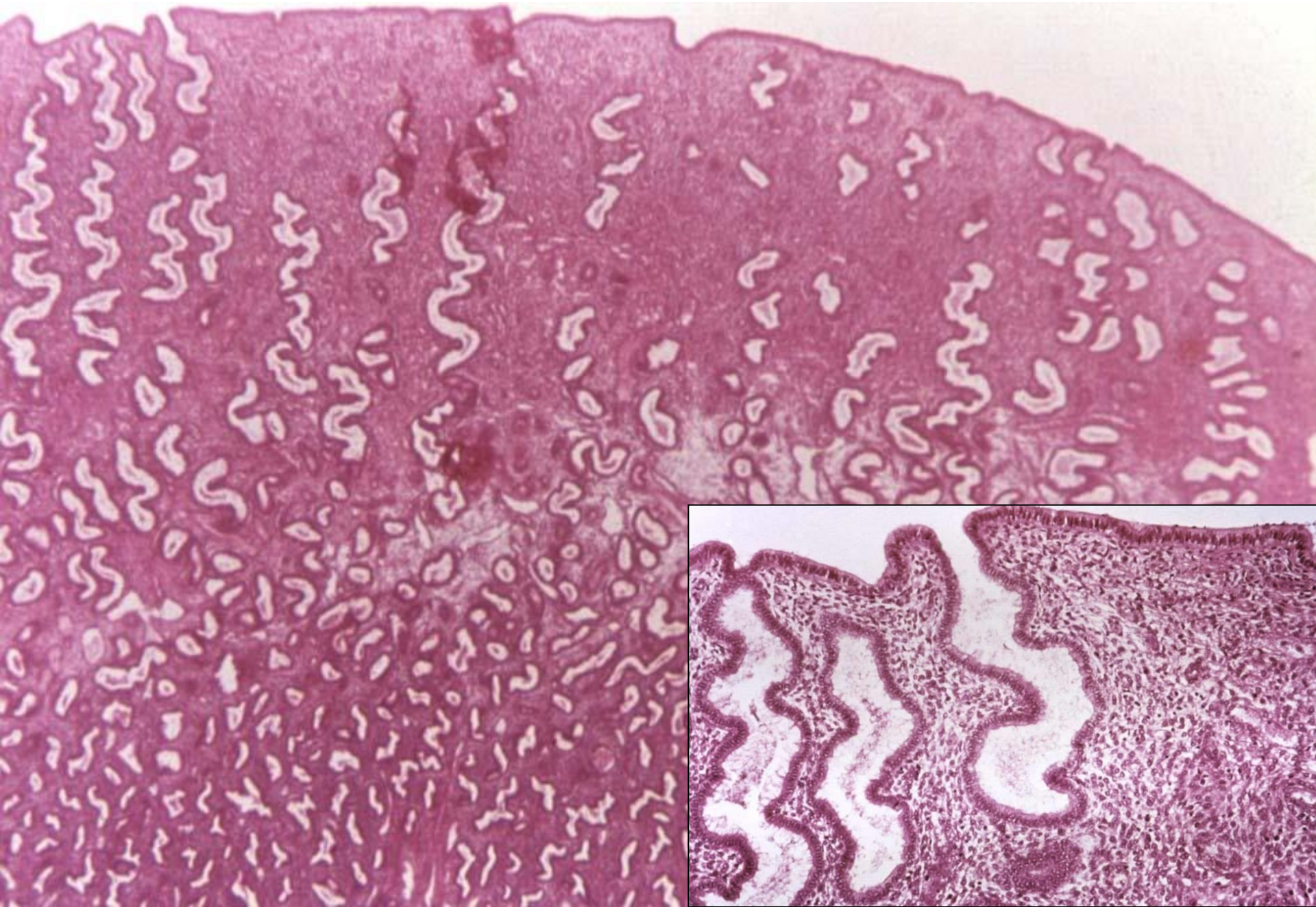
20 μm

Endometrium – proliferační fáze – arteriae helicinae, buněčné vazivo



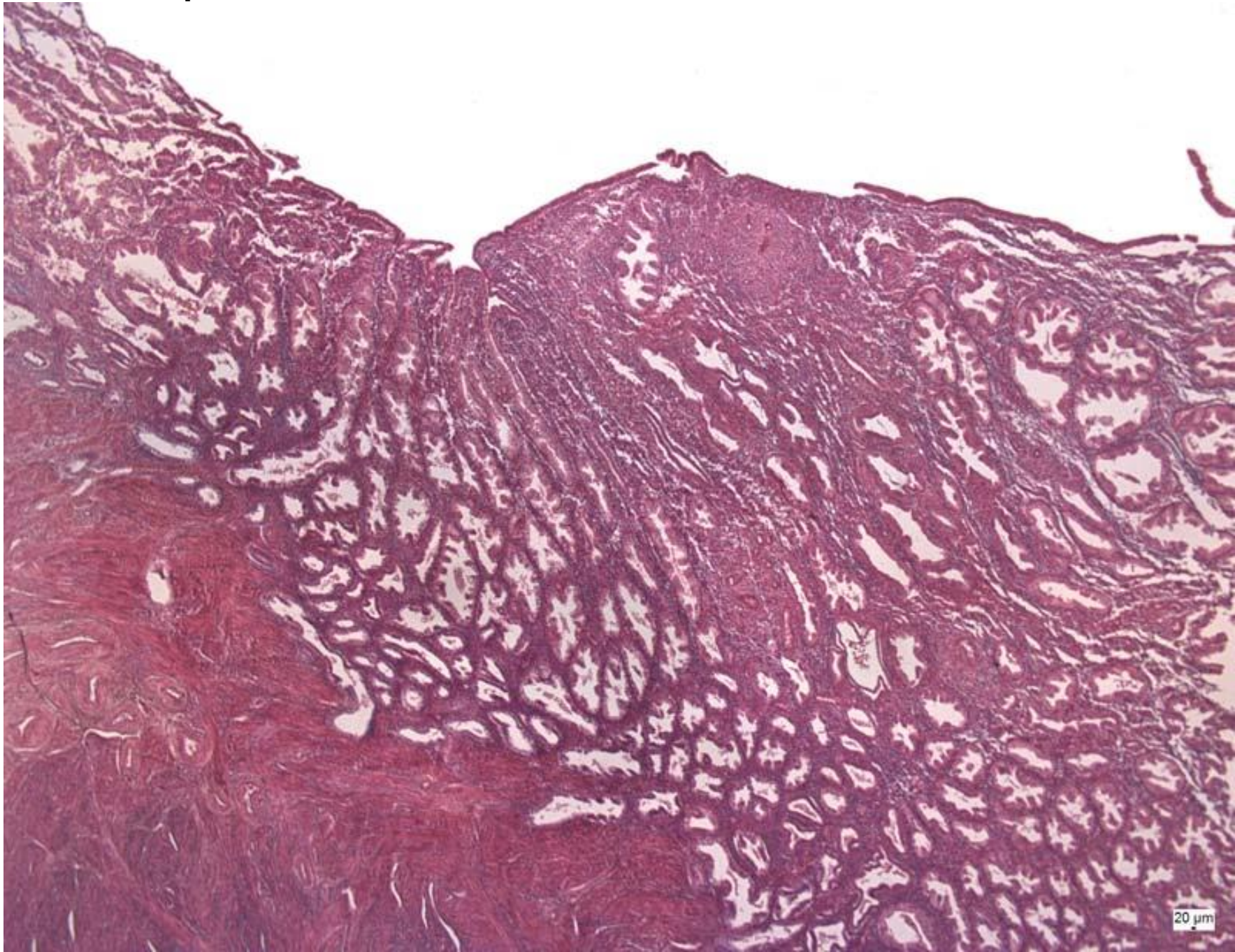
glandulae
uterinae

Endometrium – začátek sekreční fáze



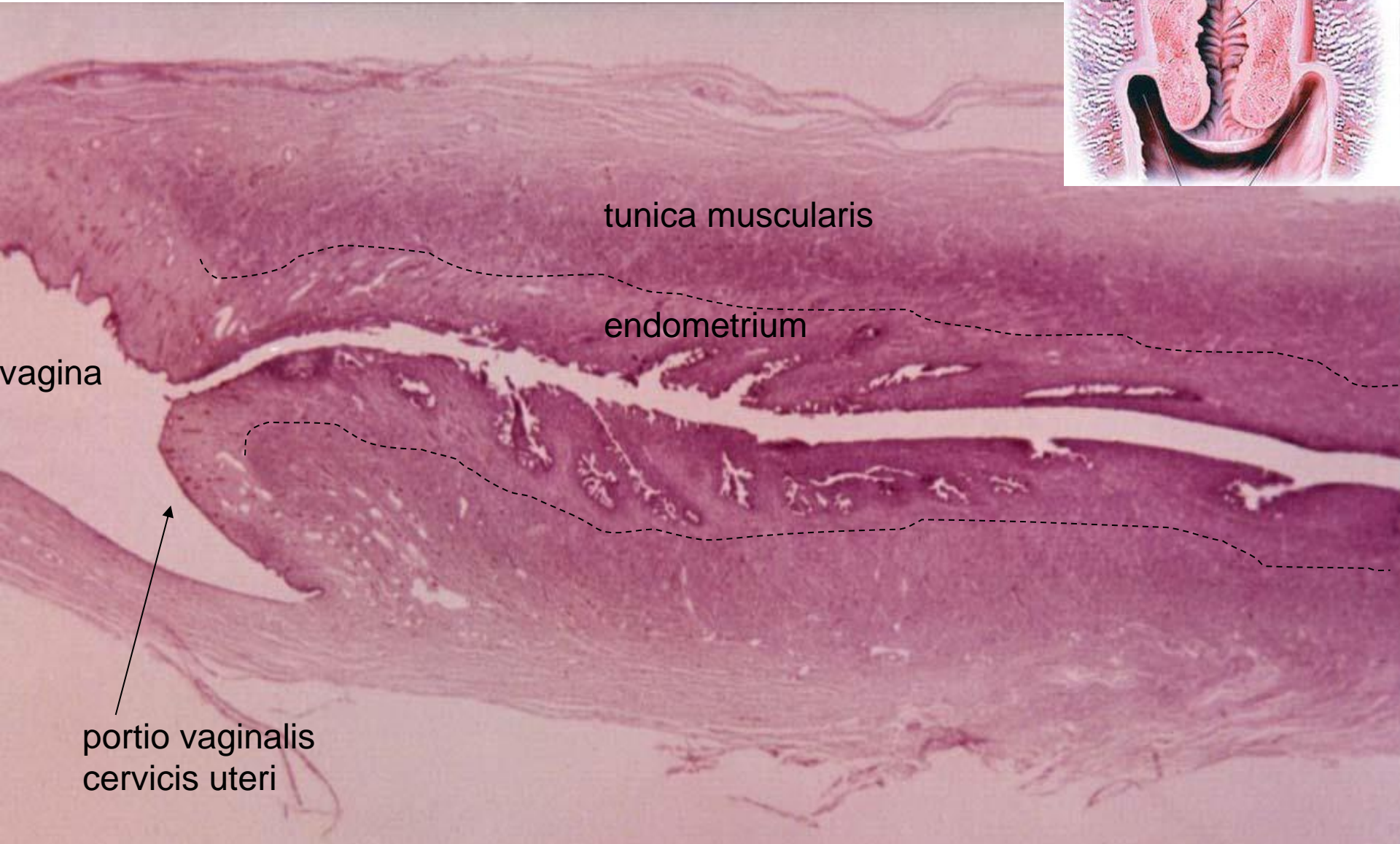
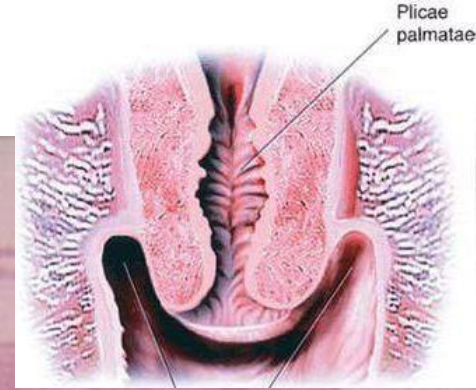
Endometrium – pokročilá sekreční fáze

5-7
mm



20 μ m

Cervix uteri



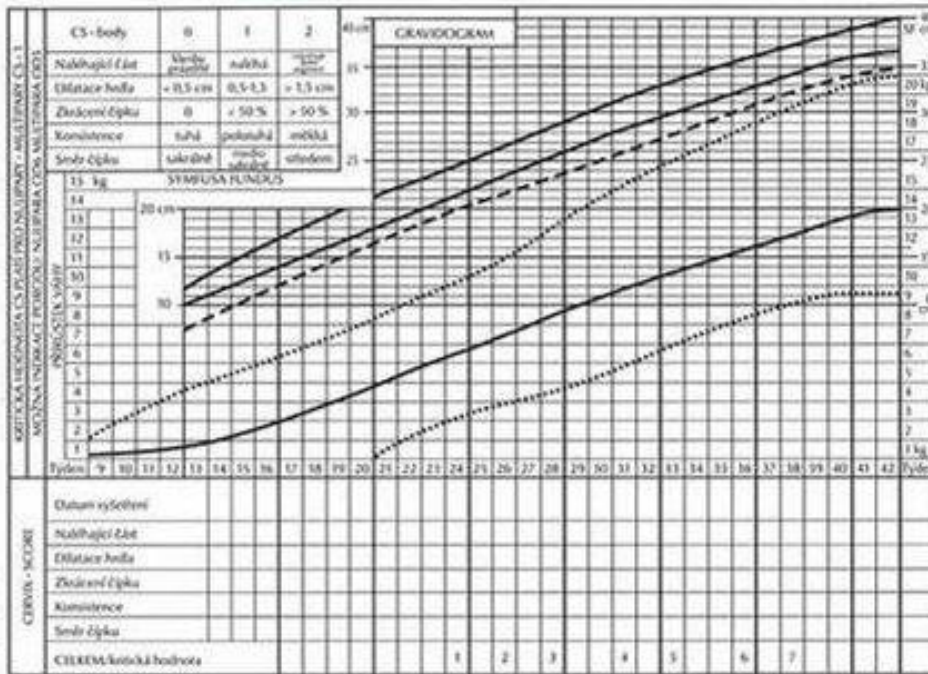
glandulae cervicales – cervikální hlen

Portio vaginalis cervicis uteri - přechod epitelů

jednovrst.cyl.epi (endocervix)

vrst.dlažd.epi (ektocervix)





Cervix uteri – specifická konsistence - **cervix-skóre**

Vnitřní porodnické vyšetření

Bishop (cervix)-skóre (CS) a jeho hodnocení (tab. 1)

Cervix-skóre body	0	1	2															
Naléhající část	klenby prázdné	naléhá (klenba plná nevyvinutá)	rozvinuje dolní děložní segment (klenba plná vyvinutá)															
Dilatace hrdla	< 0,5 cm	0,5 – 1,5 cm	> 1,5 cm															
Zkrácení čípku	0	< 50%	> 50%															
Konzistence čípku	tuhá	polotuhá	měkká															
Lokalizace čípku	sakrálně	mediosakrálně	ventrálně (středem)															
Hodnocení:																		
Týden gravidity	8-23	24	25	26	27	28	29	30	31	32	33	34	35	36	37	38	39	> 39
Kritická hodnota		1	2	3	4	5	6	7	8	9	10							

Kritická hodnota CS platí pro nulipary, pro multipary platí CS +1



ŽENSKÝ POHLAVNÍ SYSTÉM I

Preparáty:

- 42. Ovarium
- 43. Ovarium – kočka
- 44. Corpus luteum
- 45. Tuba uterina – ampulla
- 46. Tuba uterina – isthmus
- 47. Uterus – proliferativní fáze
- 48. Uterus – sekreční fáze

Atlas EM:

Ovariální folikul (1)

Vejcovod - epitel (26, 29, 30)