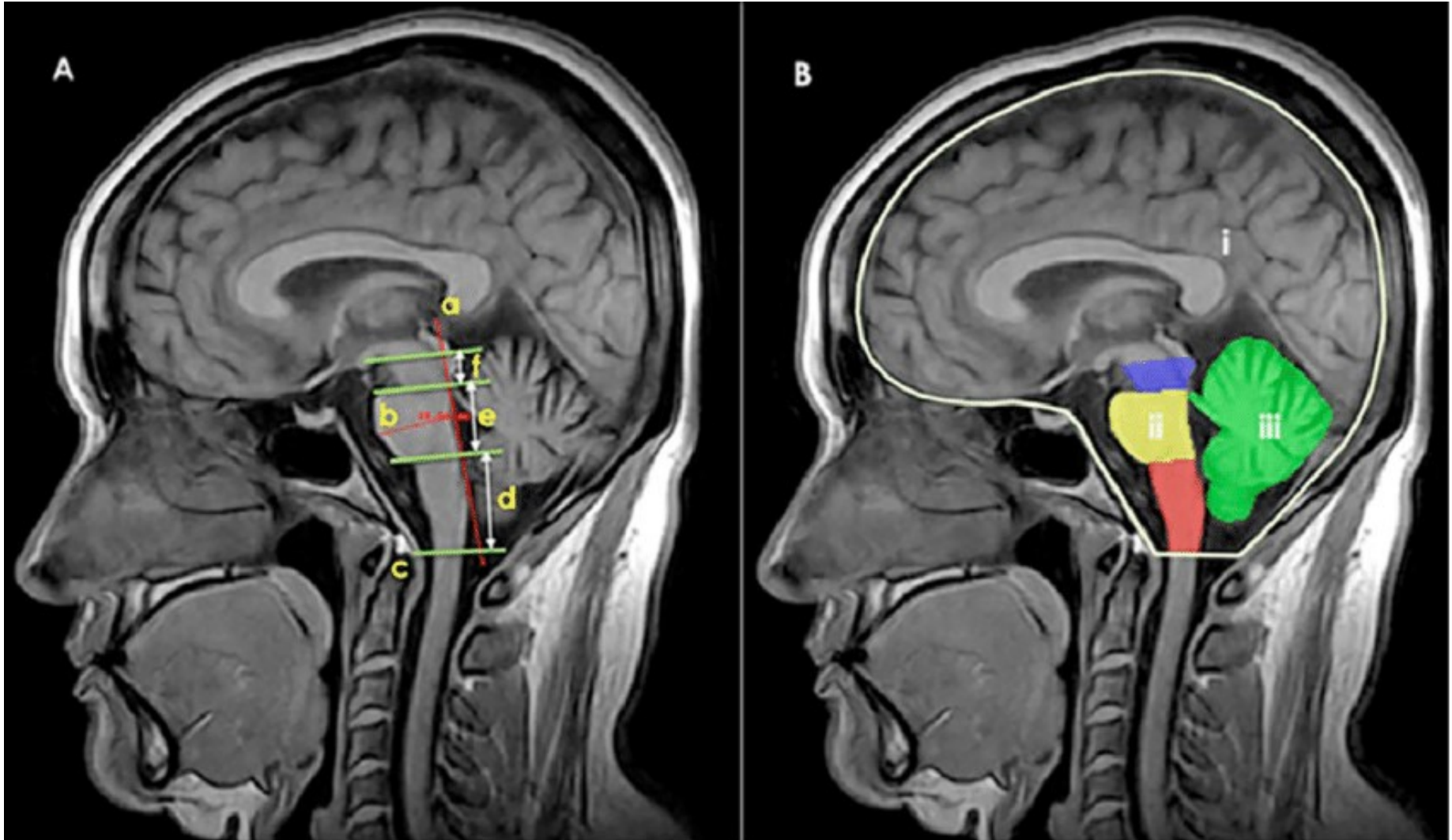
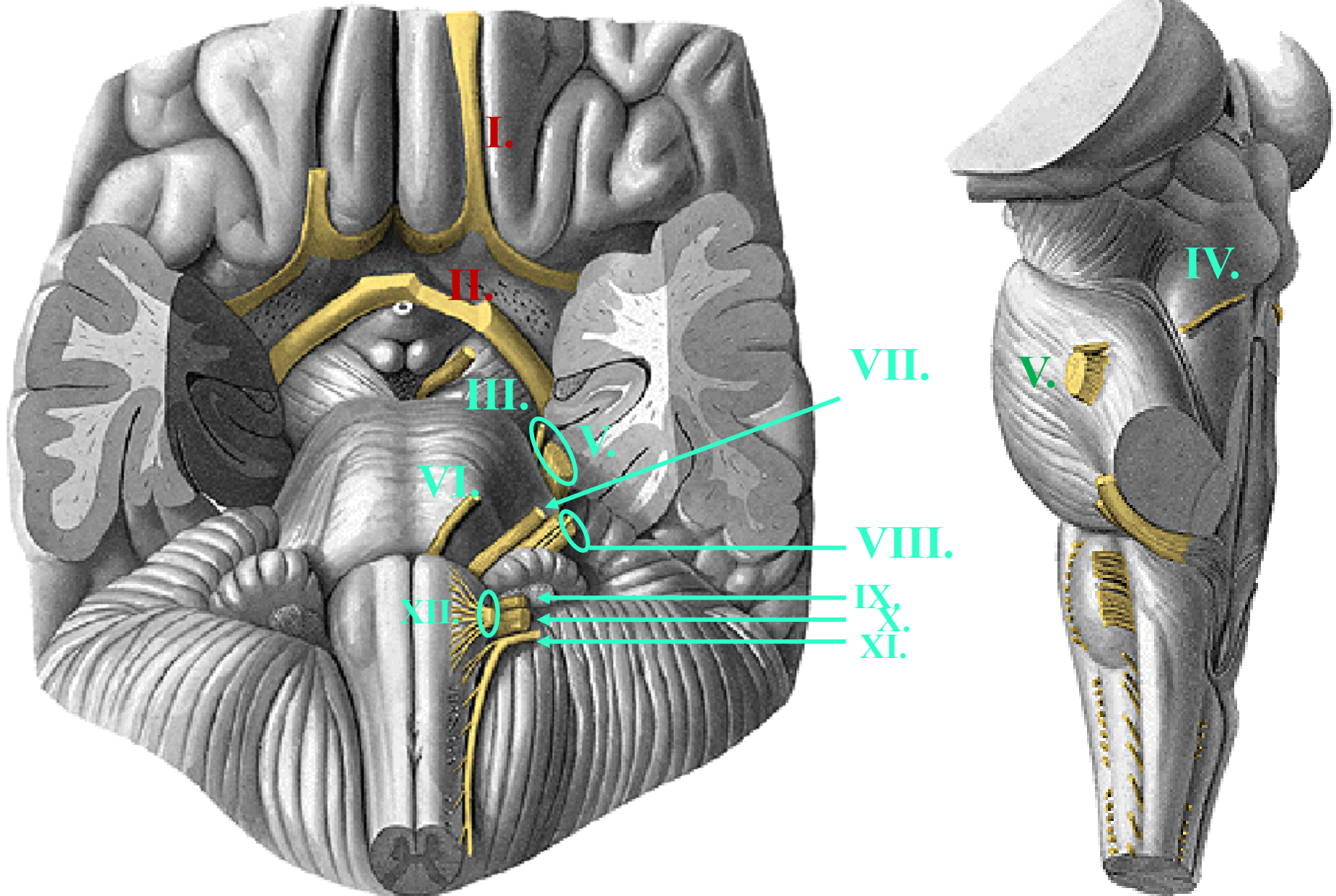
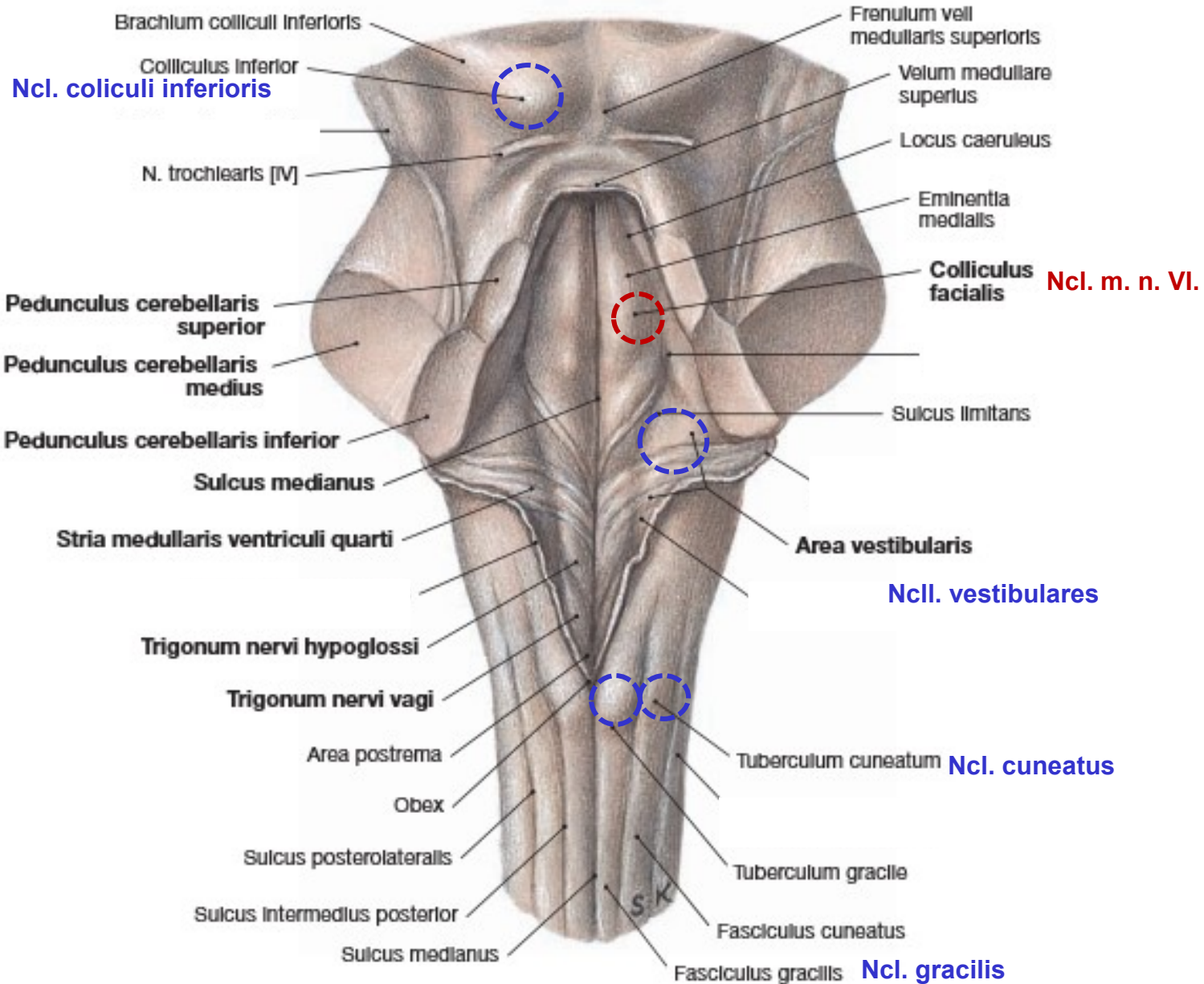


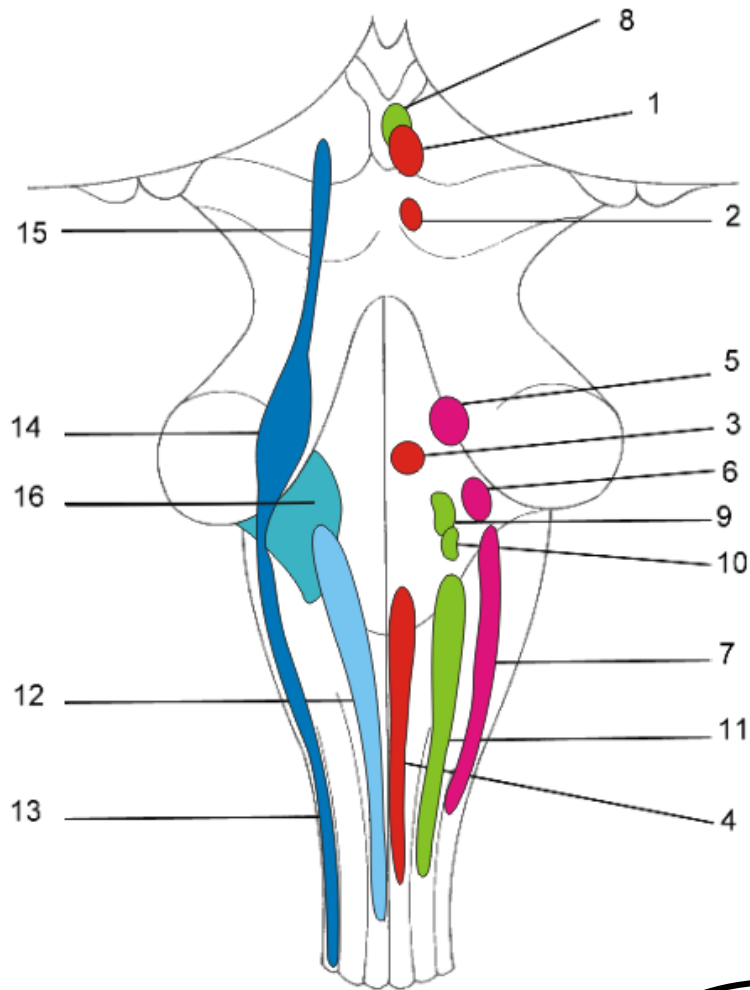
# MOZKOVÝ KMEN



# MOZKOVÝ KMEN – Odstupy hlavových nervů







**SM**

- 1 - ncl. motorius (originis) n. III.
- 2 - ncl. motorius (originis) n. IV.
- 3 - ncl. motorius (originis) n. VI.
- 4 - ncl. motorius (originis) n. XII.

**BM**

- 5 - ncl. motorius (masticatorius) n. V.
- 6 - ncl. motorius (originis) n. VII.
- 7 - ncl. motorius (originis) n. IX., X., et XI (ncl. ambiguus)

**VM**

- 8 - ncl. parasympathicus n. III (ncl. E.W.)
- 9 - ncl. parasympathicus n. VII.
- 10 - ncl. parasympathicus n. IX.
- 11 - ncl. parasympathicus n. X.

**VS**

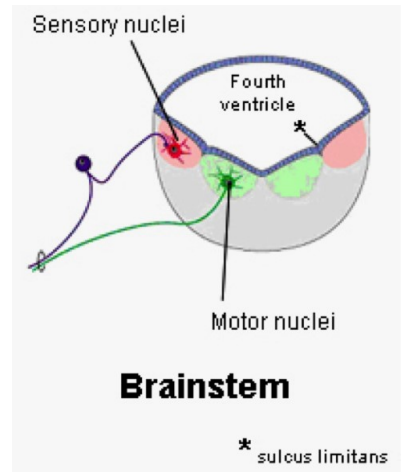
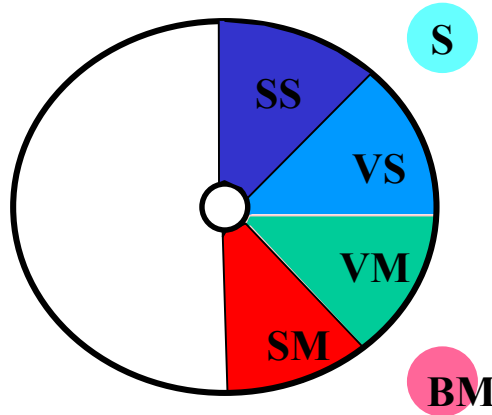
- 12 - ncl. solitarius

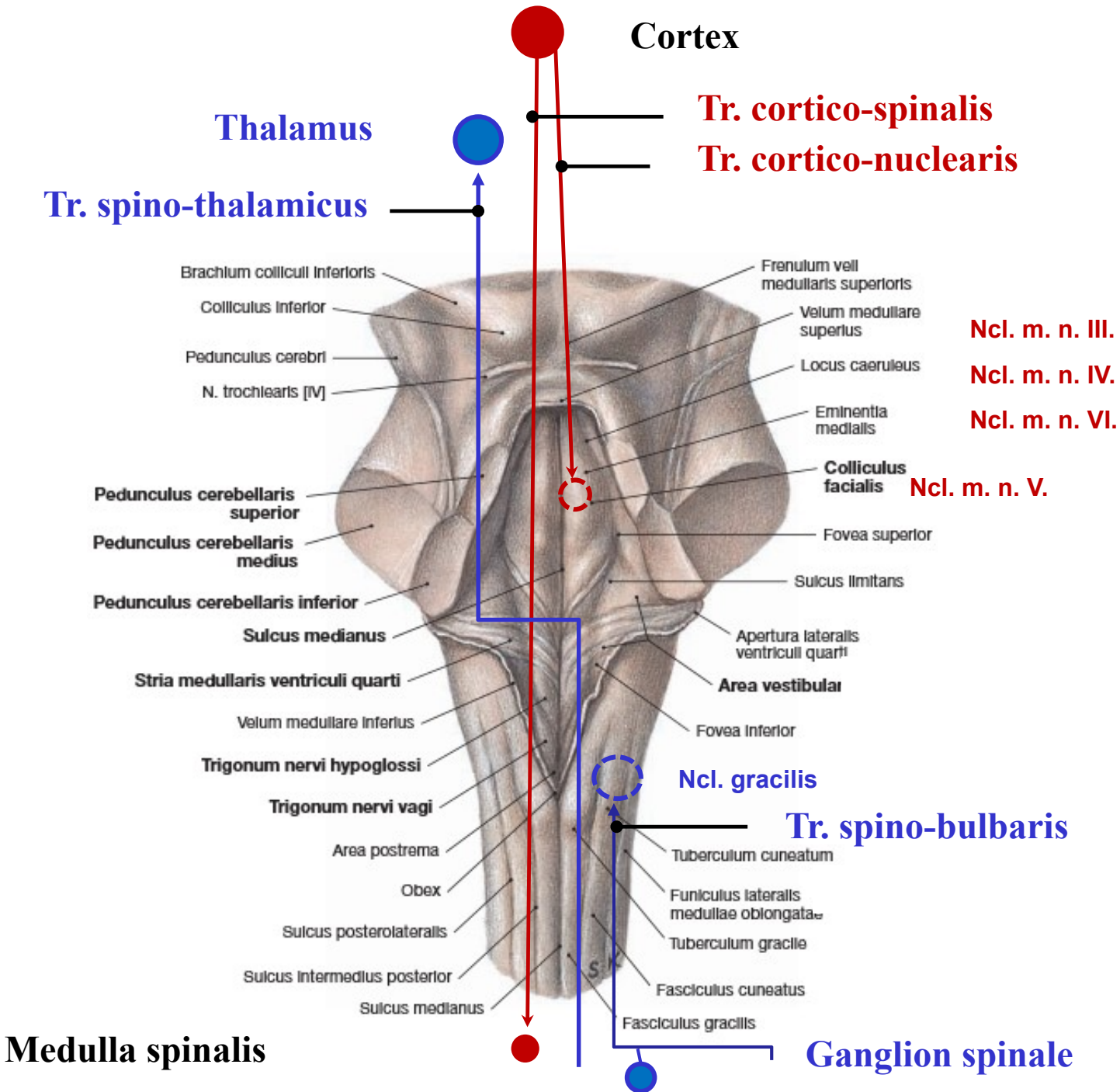
**SS**

- 13 - ncl. spinalis n. V.
- 14 - ncl. principalis n. V.
- 15 - ncl. mesencephalicus n. V.

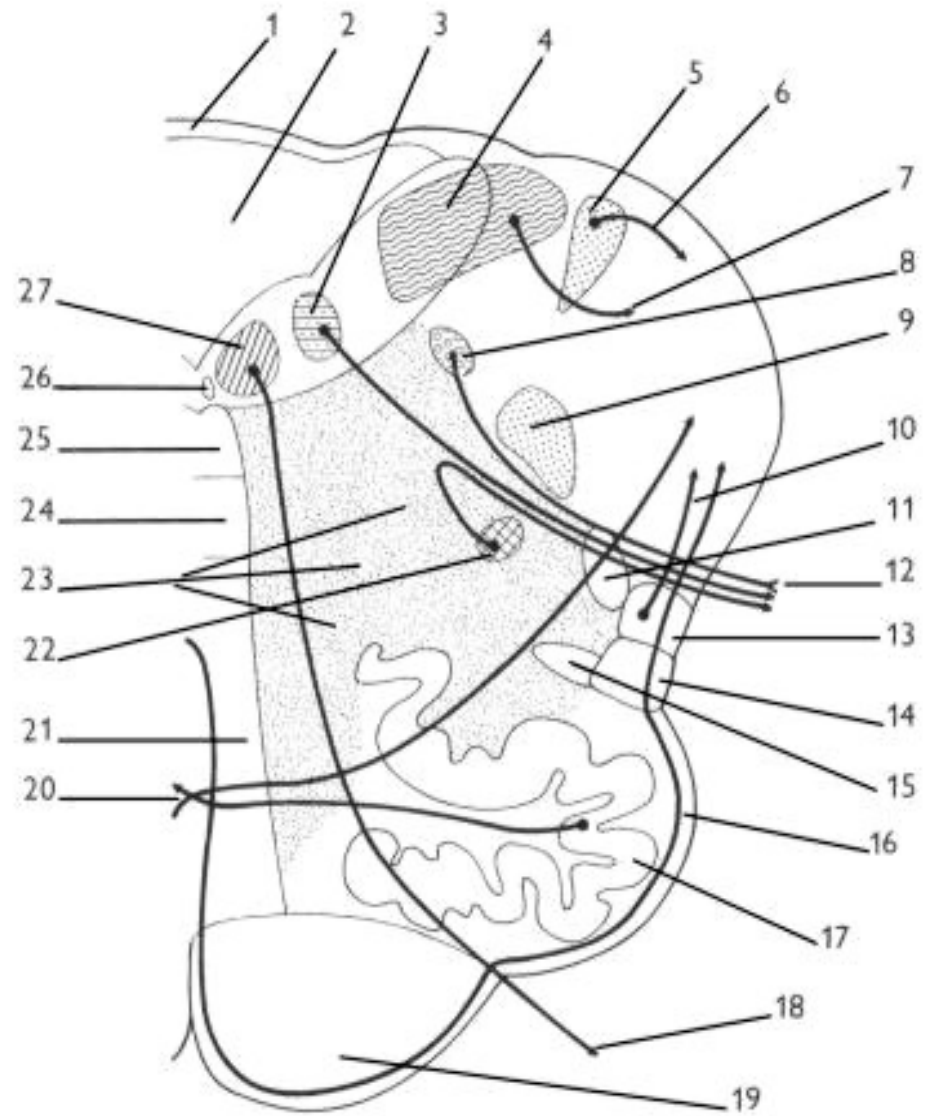
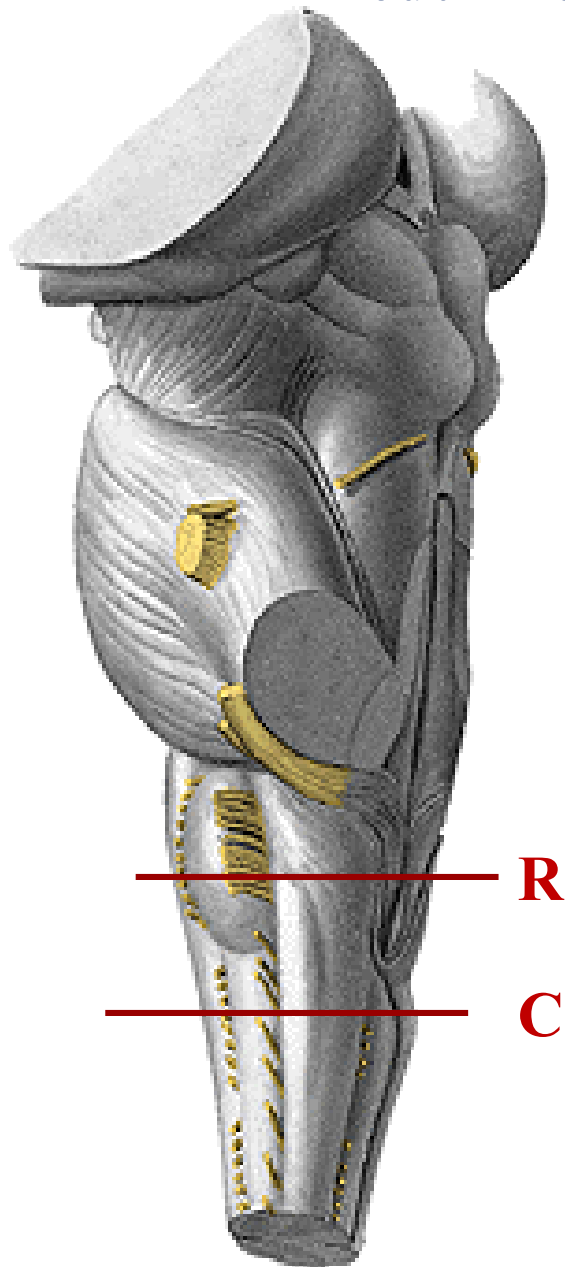
**S**

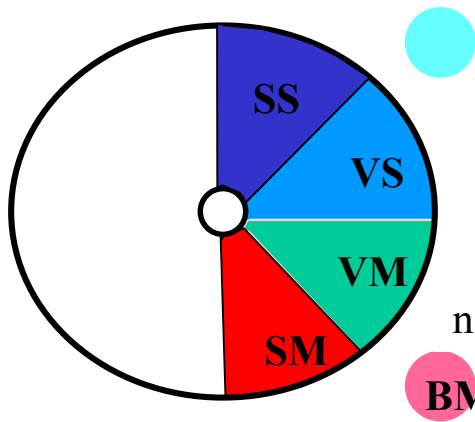
- 16 - ncl. cochleares et vestibulares





# Medulla oblongata – representativní řezy





ncl. et tr. solitarius

ncl. parasymp. n. X

BM

ncl. originis n. XII

22

FR

18

16

ncl. originis n. XI

tr.tecto-spinalis

tr. spino-c.post.

tr.cortico-spinalis lat.

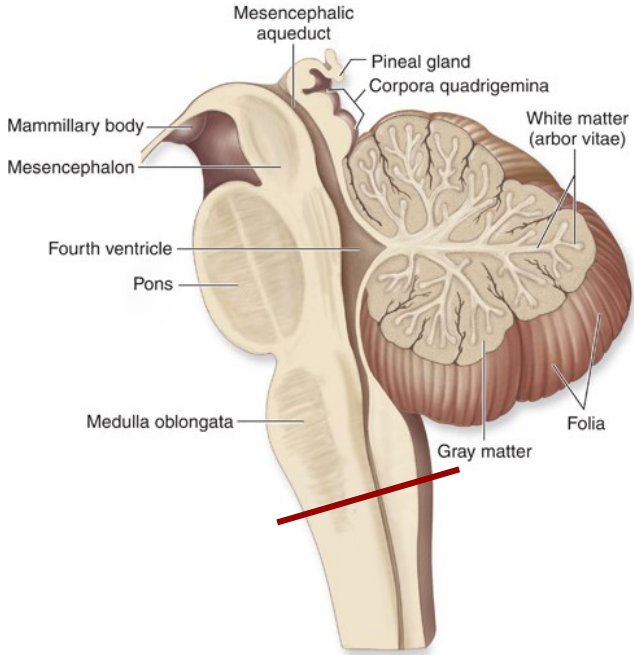
tr. spino-c.ant.

tr.rubro-spinalis

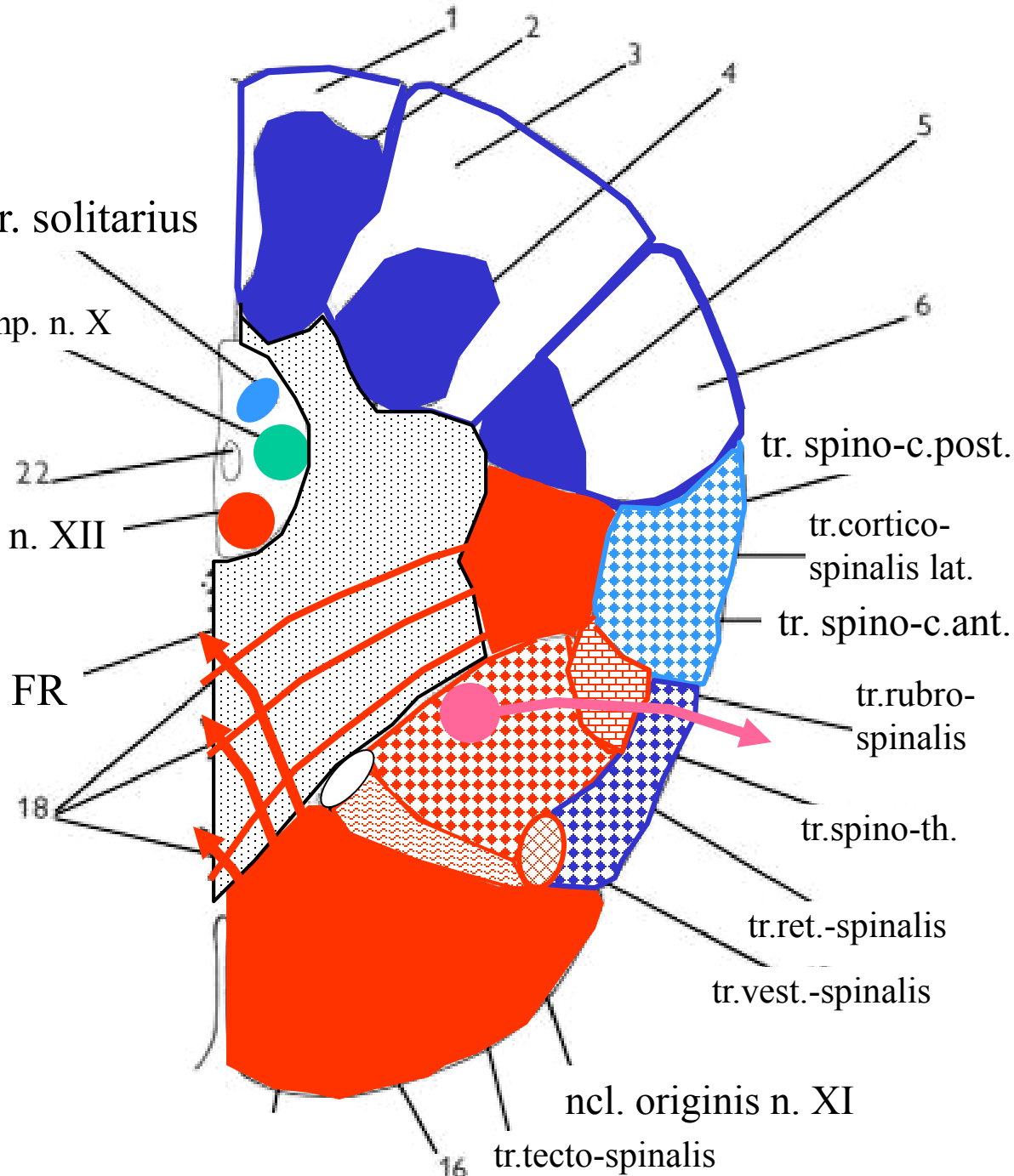
tr.spino-th.

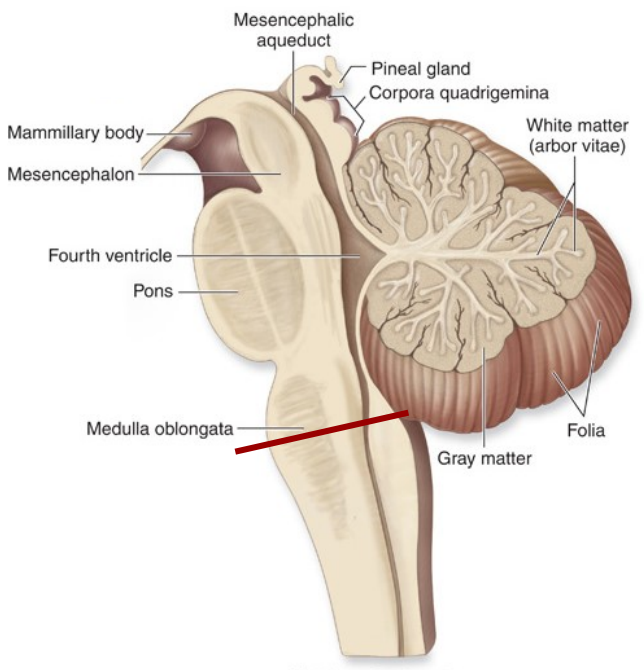
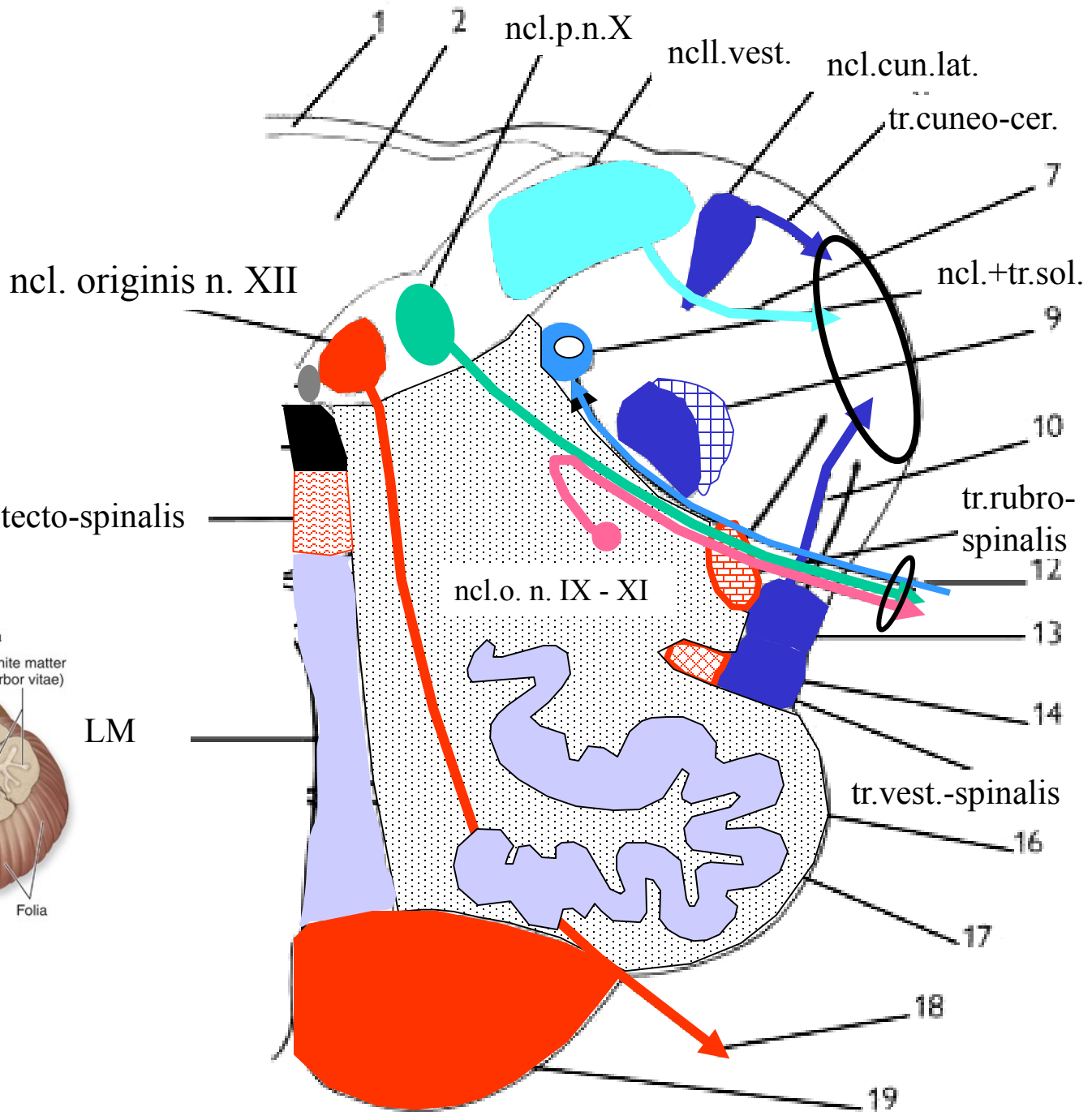
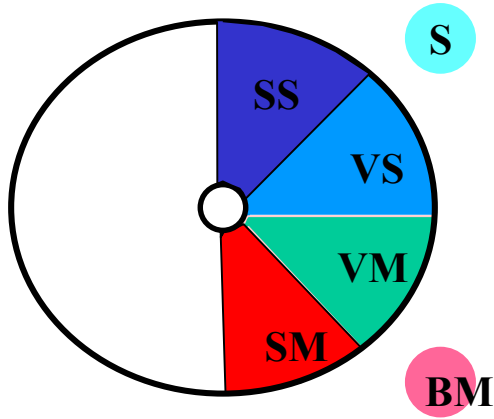
tr.ret.-spinalis

tr.vest.-spinalis



(a) Midsagittal section





(a) Midsagittal section

LM



# Medulla oblongata – rekapitulace

## Strukturální charakteristika

Decussatio pyramidum

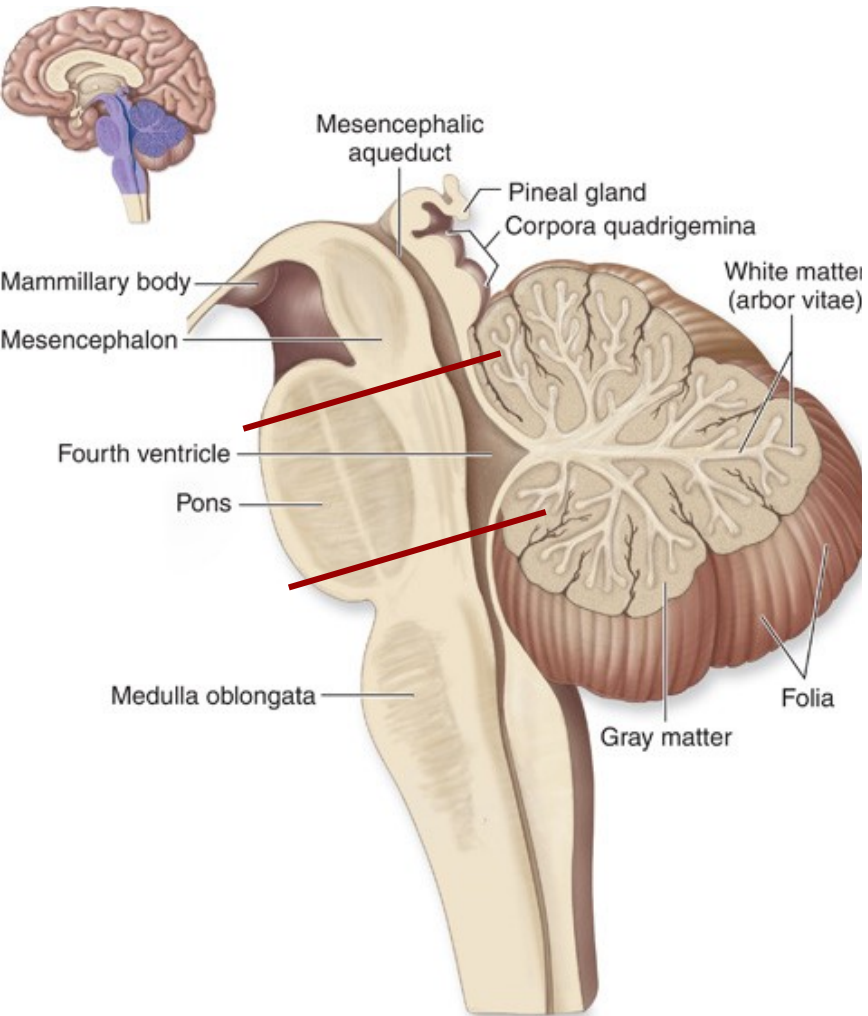
Oliva (ncl. Olivae, olivární jádro)

Odstup XII.- IX. hlavového nervu

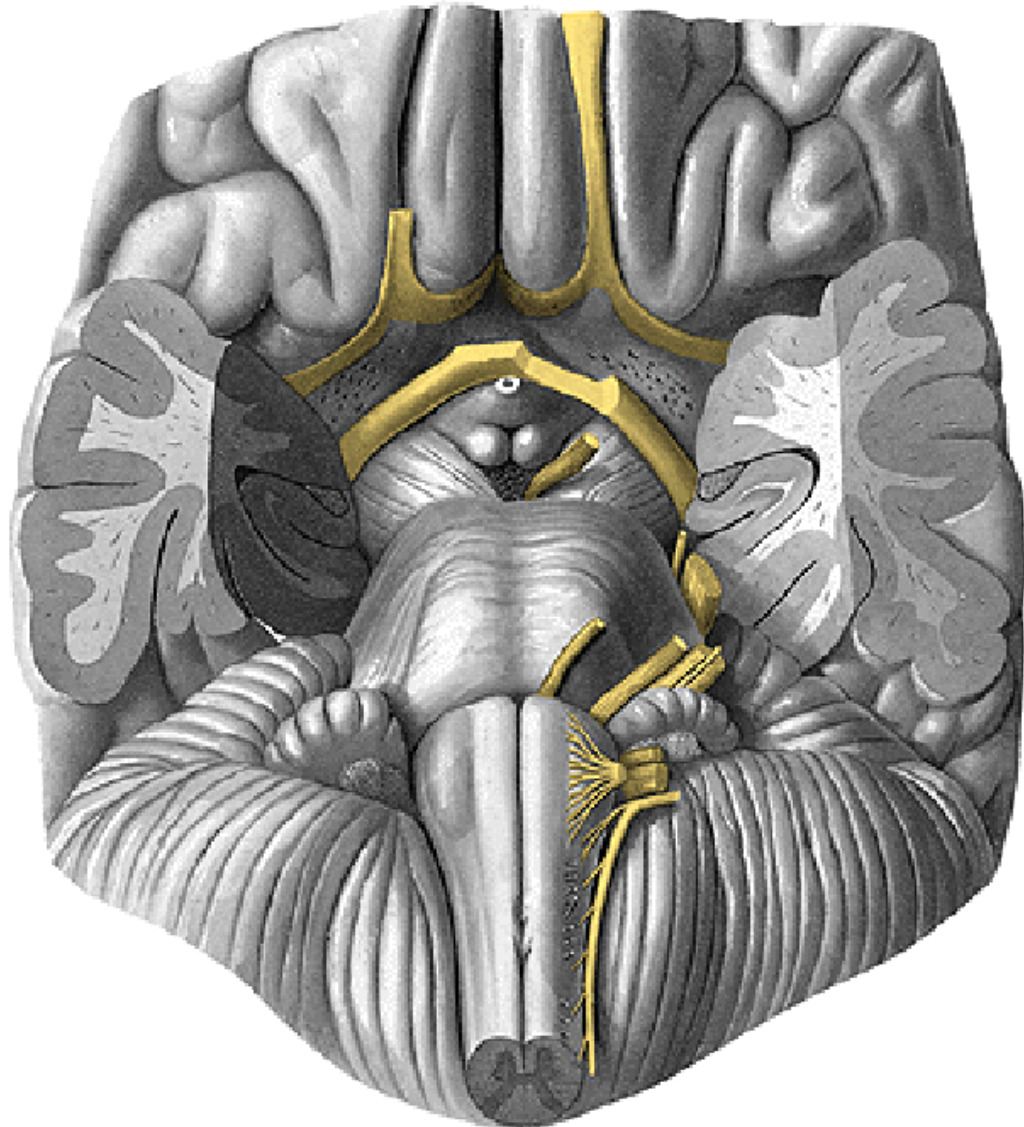
Uložení odpovídajících jader hl. nervů

Ncl. et tractus spinalis nervi V.

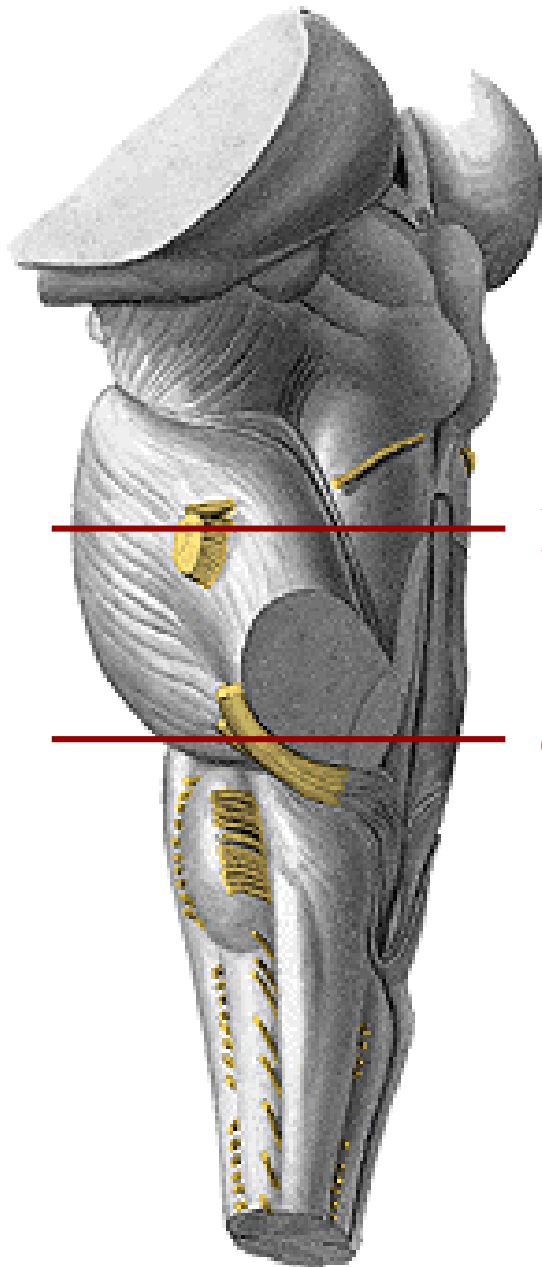
# MOZKOVÝ KMEN - Pons



(a) Midsagittal section

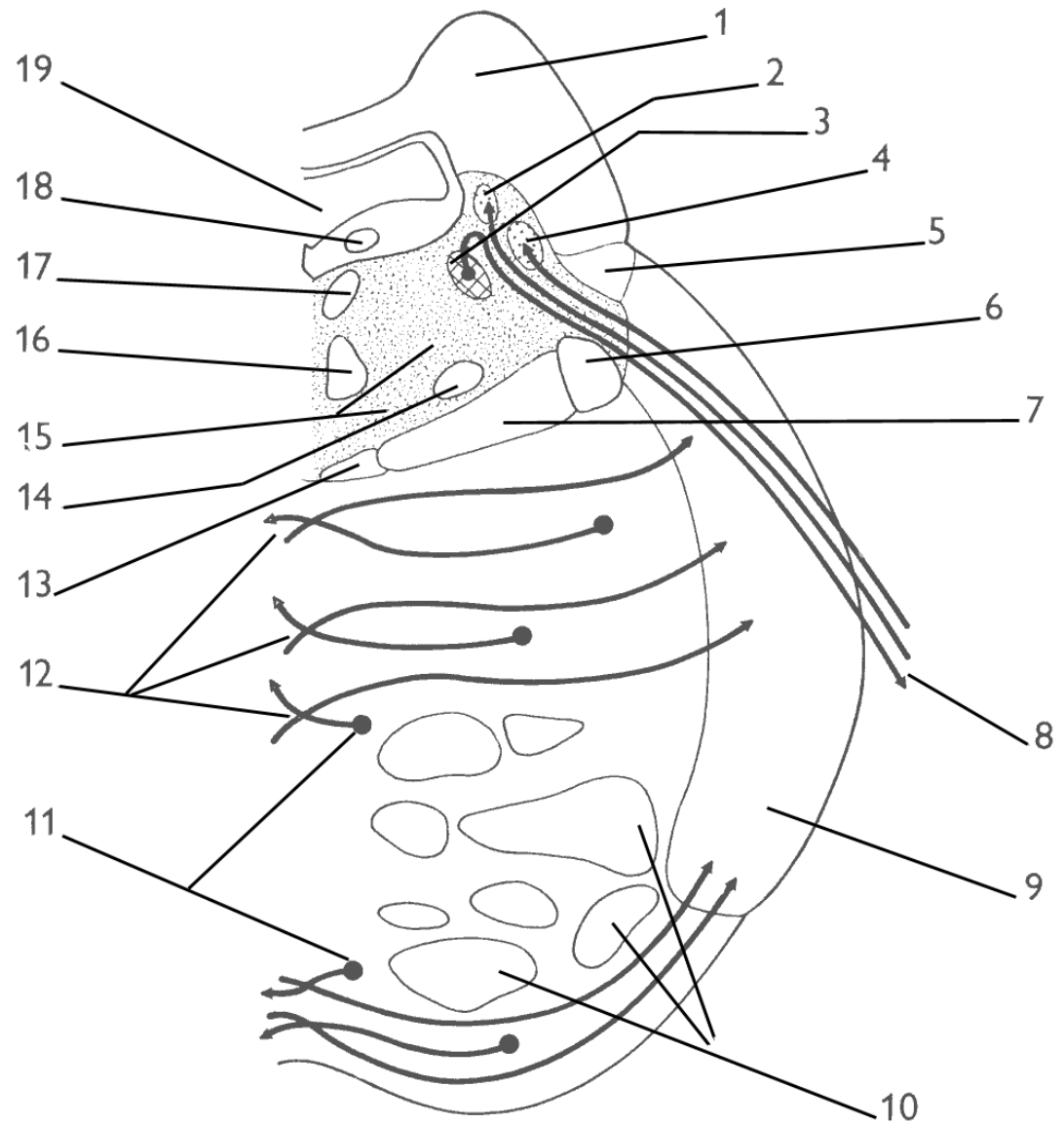


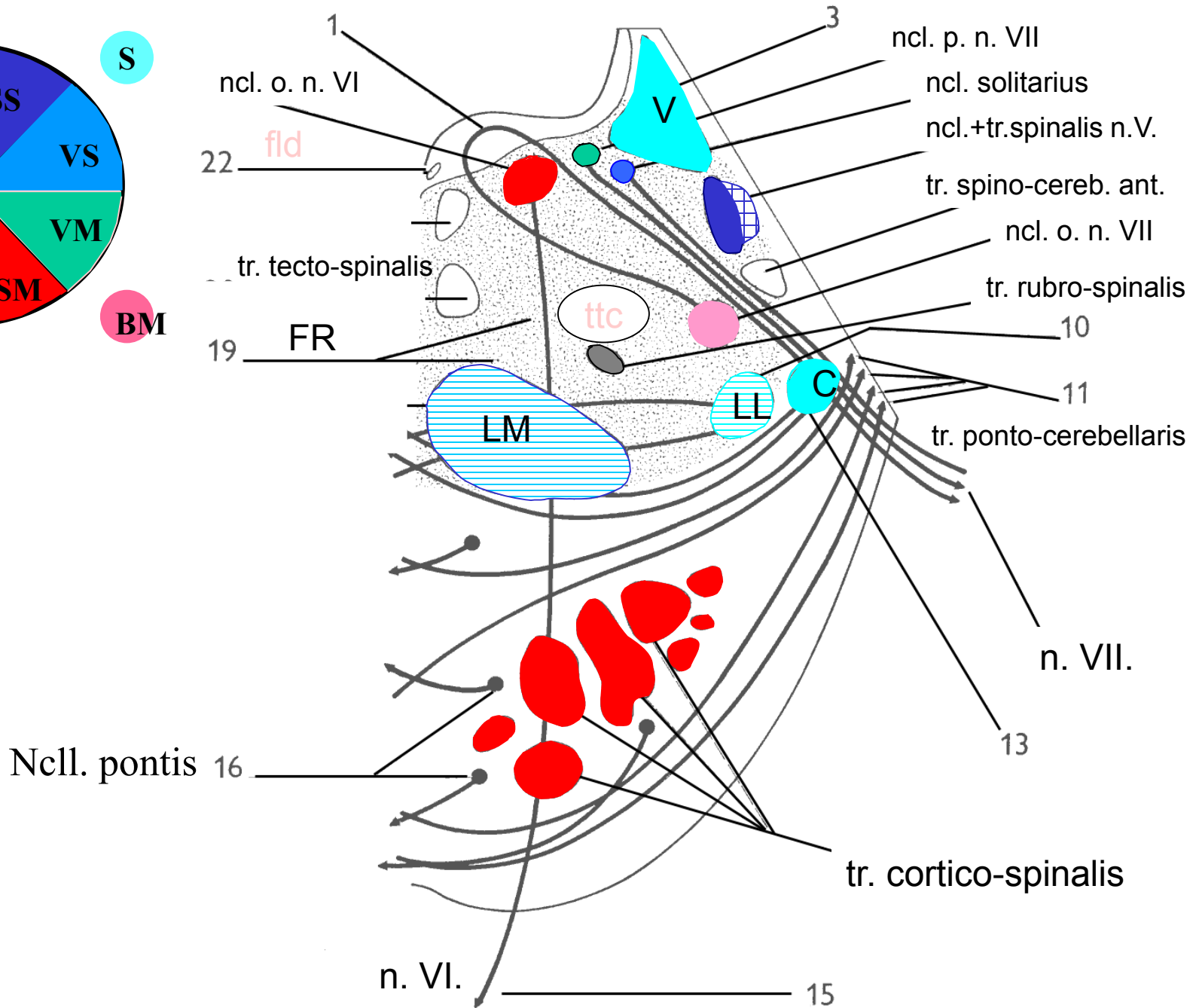
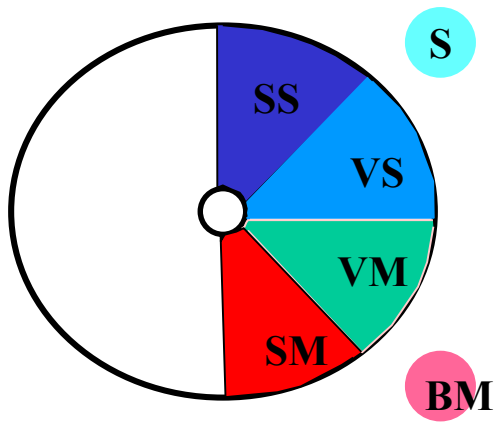
# Pons – representativní řezy

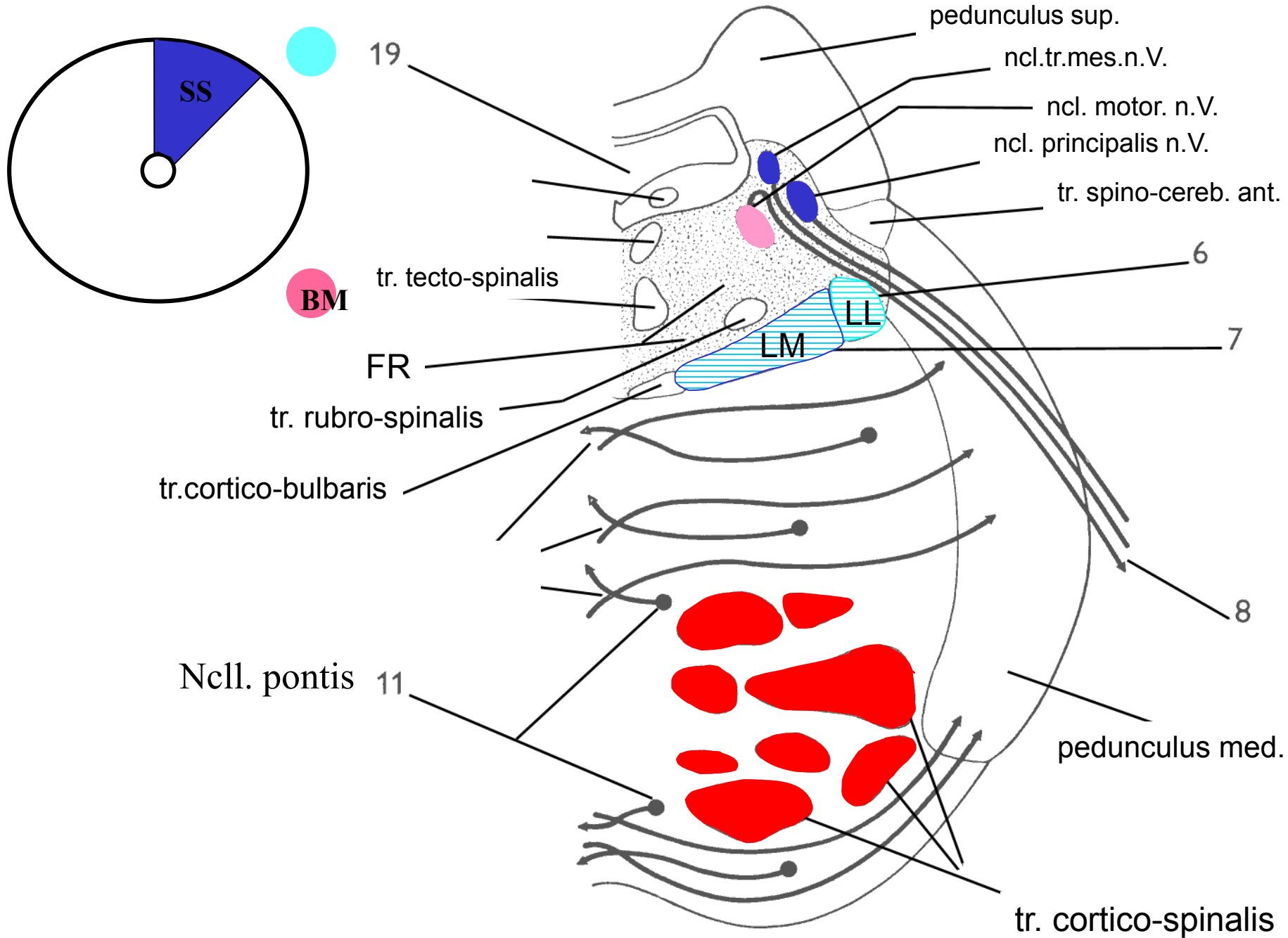


**R**

**C**







# Pons – rekapitulace

## Strukturální charakteristika

Ventrálně výrazná bílá hmota – tr. cortico-spinalis + tr. ponto-cerebellaris (z ncl. pontis ), laterálně pedunculus cerebellaris medius

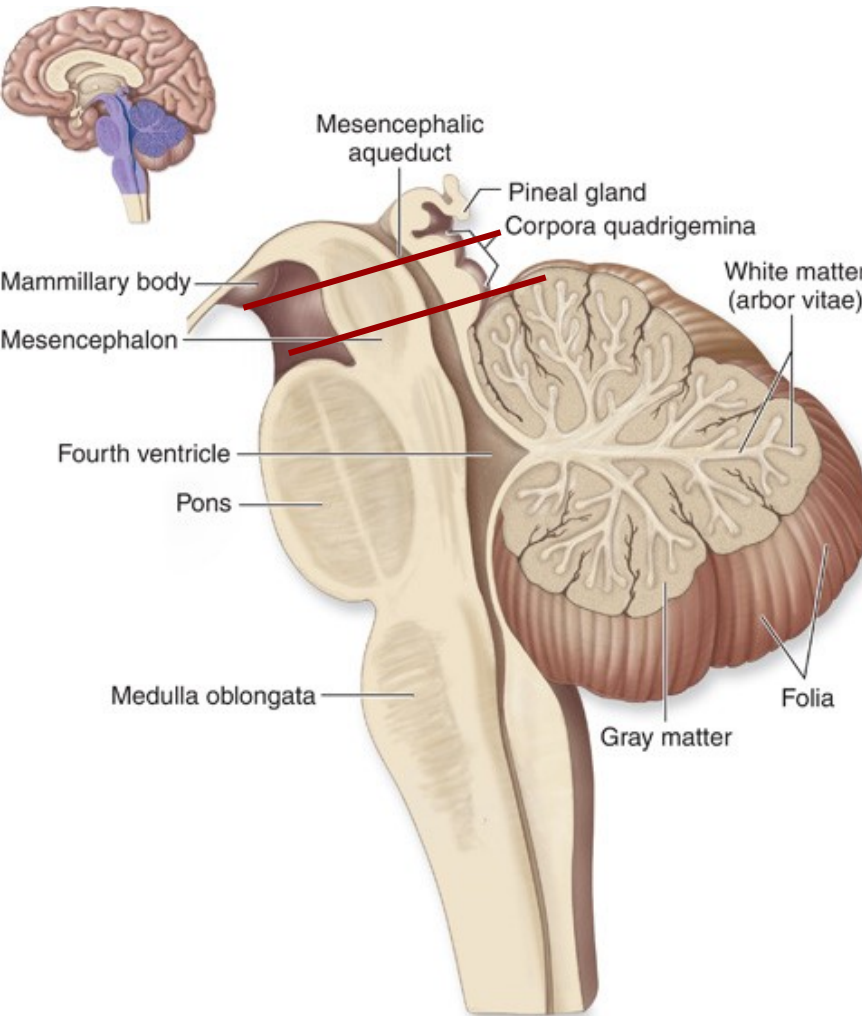
Odstup VIII.-V. hl nervu (ncl. principalis et motorius n. V.)

Uložení odpovídajících jader hl. nervů

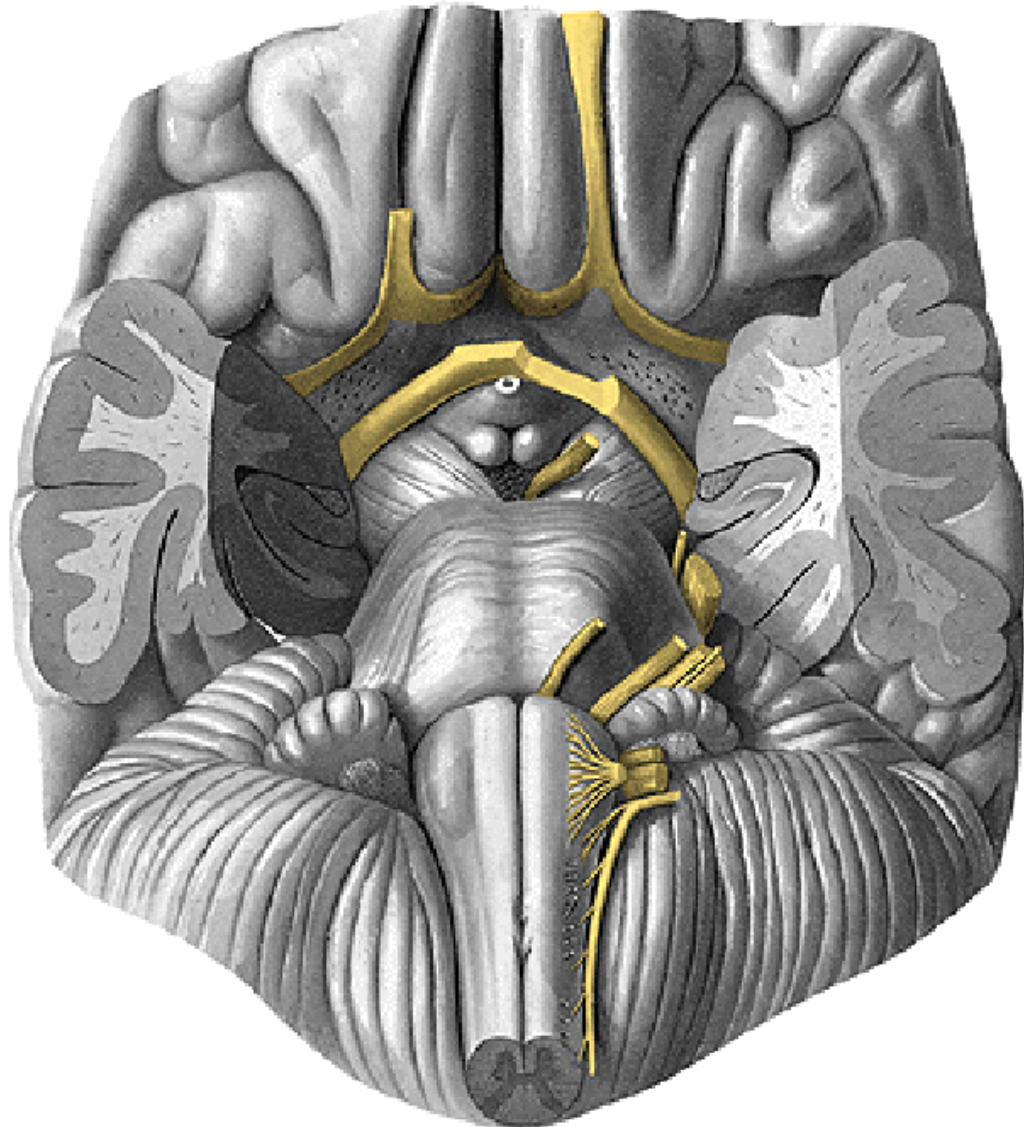
Genu internum n.VII.

LM, LL

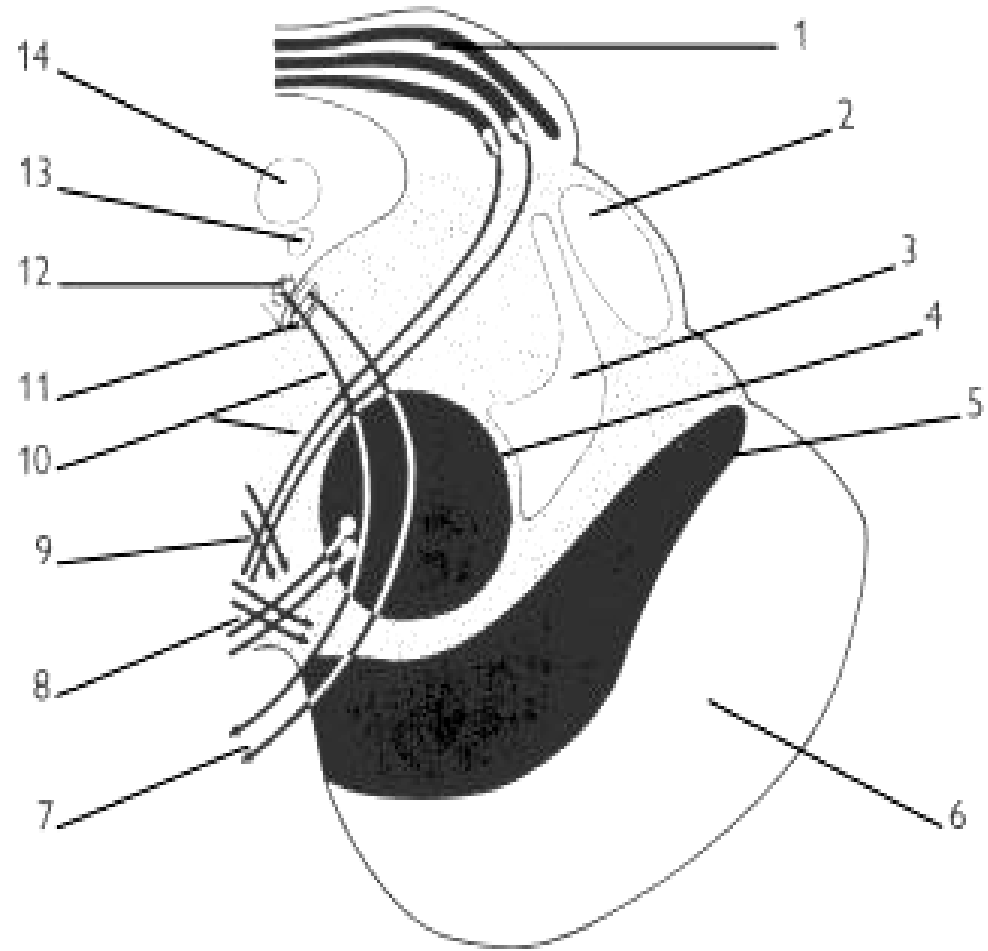
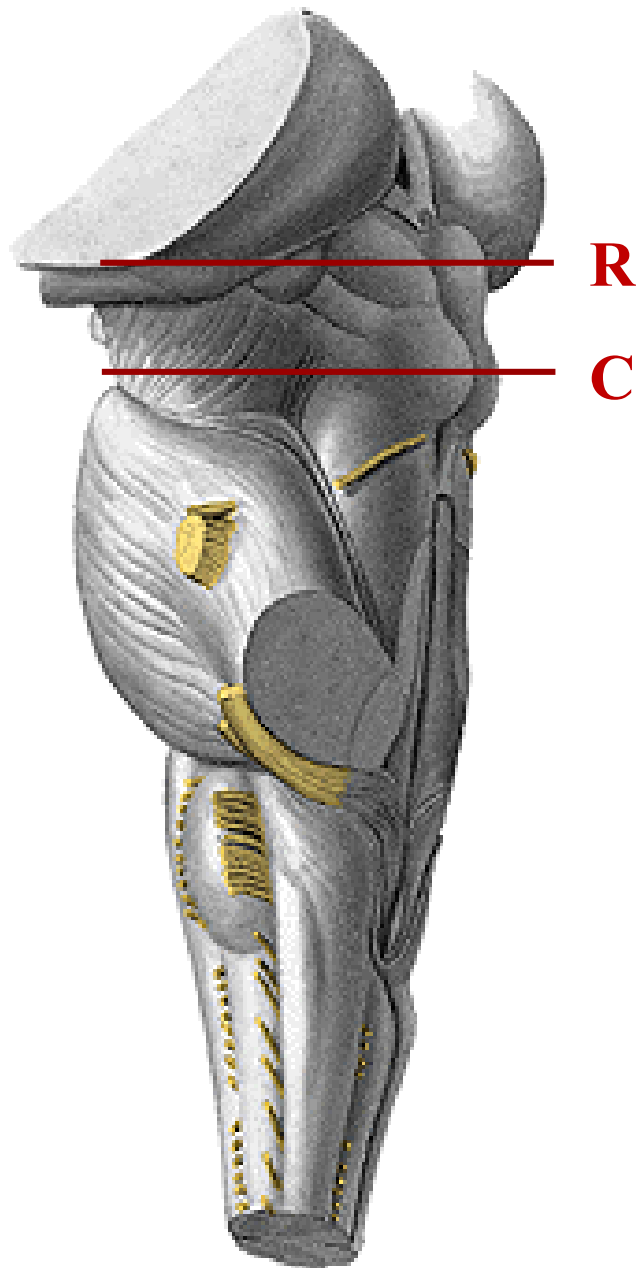
# MOZKOVÝ KMEN – Mesencephalon



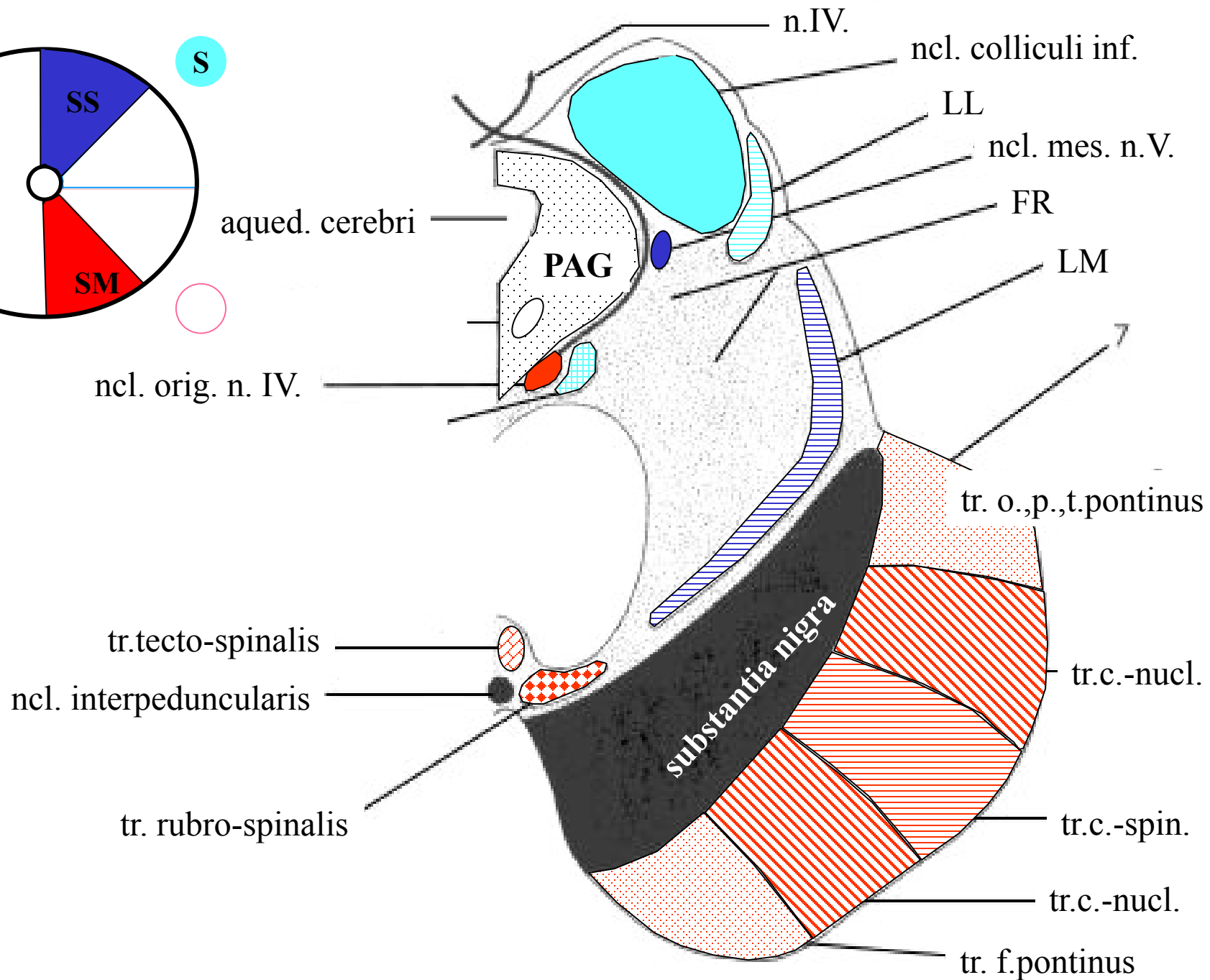
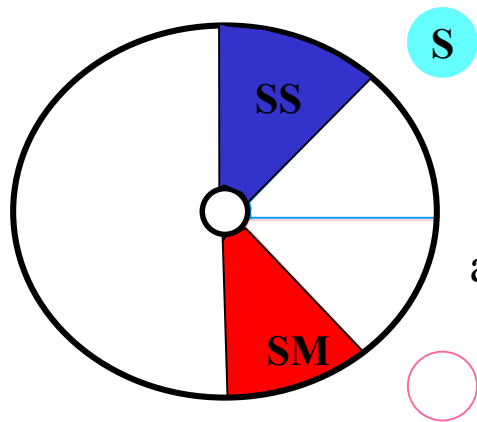
(a) Midsagittal section

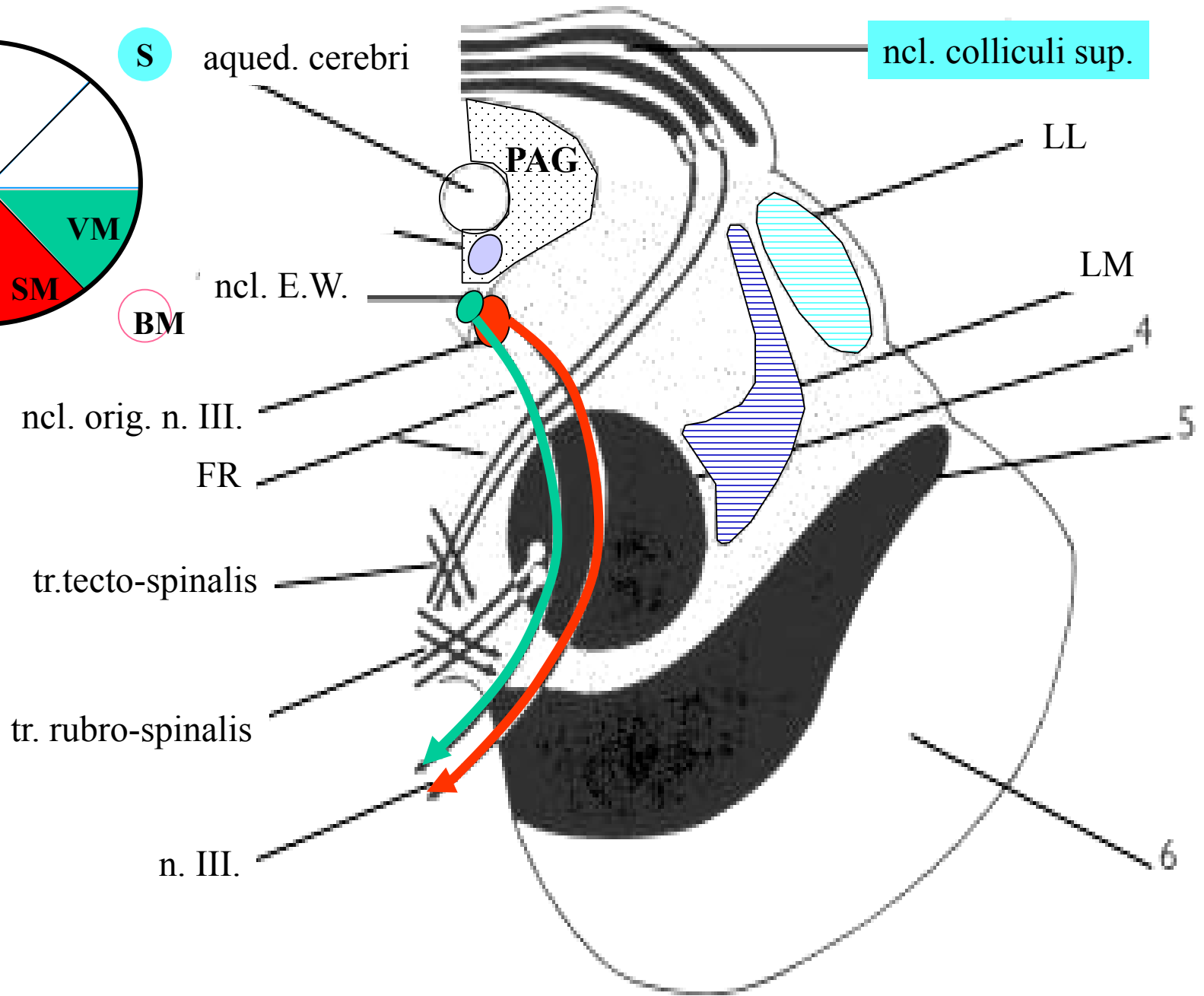
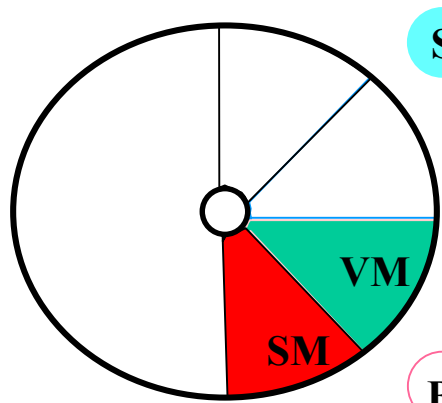


# Mesencephalon – representativní řezy









# Mesencephalon – rekapitulace

## Strukturální charakteristika

Pedunculi cerebri (fossa interpeduncularis) – na řetu crus cerebri

Aqueductus cerebri (Sylvii)

Ncl. colliculi superioris et inferioris

Hlavní strukturální oddíly: tectum, tegmentum (FR), crura cerebri

Rozsáhlá retikulární formace (FR) – periaqueduktální šedá hmota (PAG)

Substantia nigra, ncl. Ruber

Odstupy IV. a III. hl. nervu

Uložení odpovídajících jader hl. nervů

Ncl. mesencephalicus n. V.