

ORGANUM VESTIBULOCOCHLEARE

Auris externa, media et interna

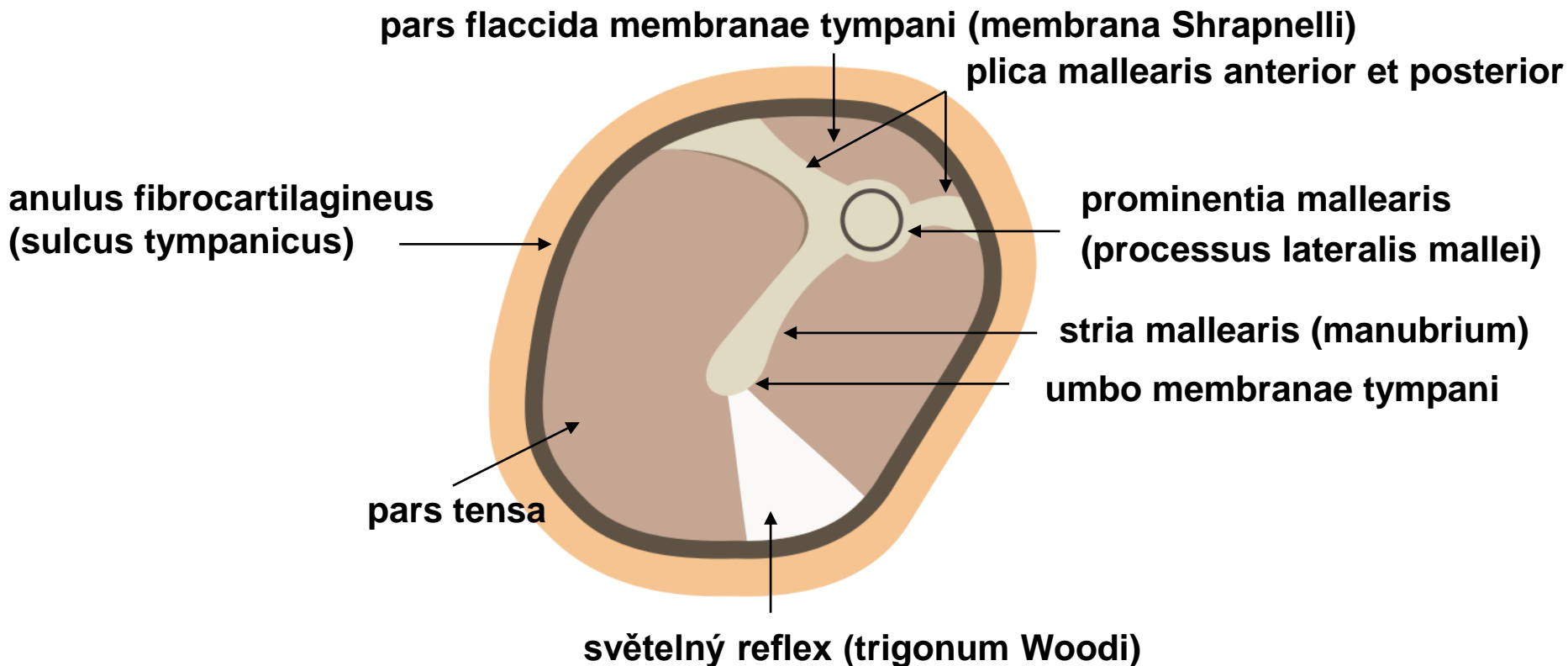
Auris externa	Auricula Meatus acusticus externus Membrana tympani
Auris media	Cavitas tympani Ossicula auditus Tuba auditiva
Auris interna	Labyrinthus osseus Labyrinthus membranaceus

MEMBRANA TYMPANI

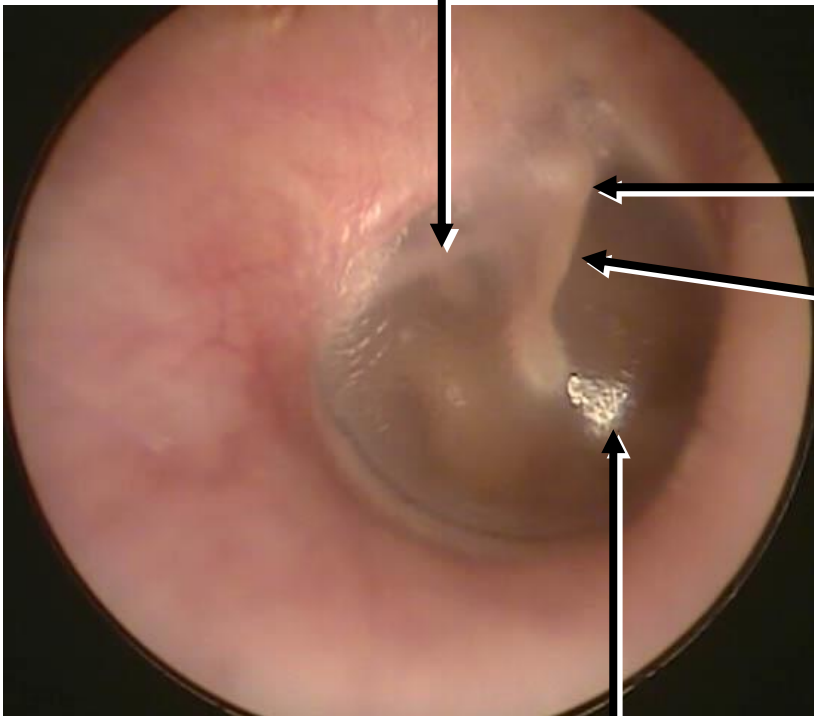
střední vazivová vrstva – stratum membranaceum

zevní vrstva - stratum cutaneum

vnitřní vrstva - stratum mucosum



plica mallearis posterior



**prominentia mallearis
(processus lateralis mallei)**

stria mallearis (manubrium)

světelný reflex (trigonum Woodi)



CAVITAS TYMPANI

paries membranaceus

- bubínek

paries labyrinthicus

- promontorium
- fenestra vestibuli
- fenestra cochleae

paries jugularis

- apertura externa canaliculi tympanici

paries tegmentalis

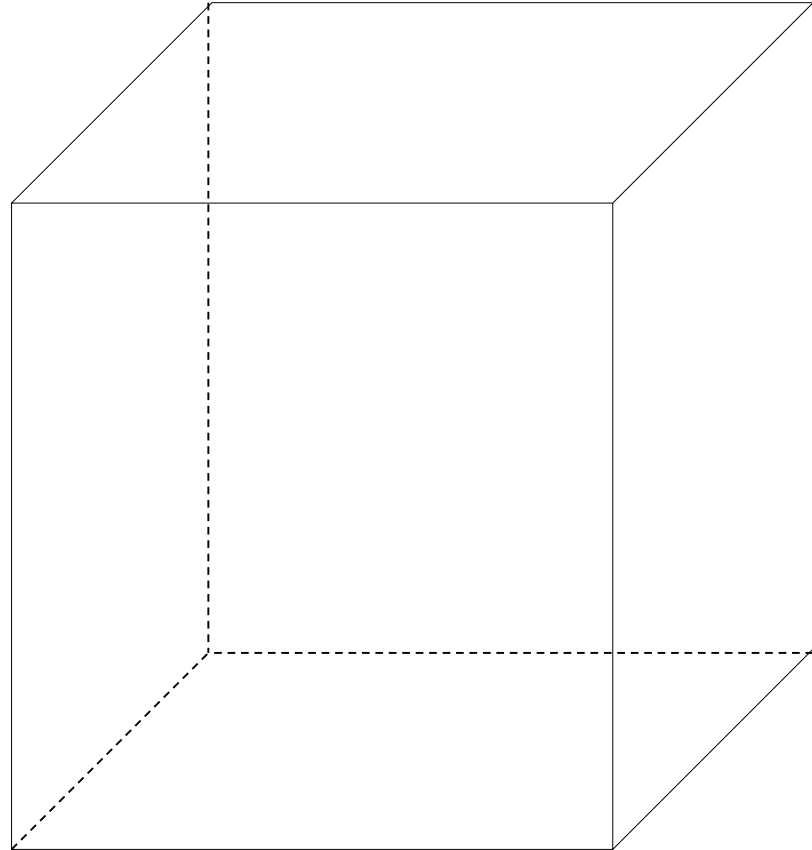
- hiatus canalis nervi petrosi minoris

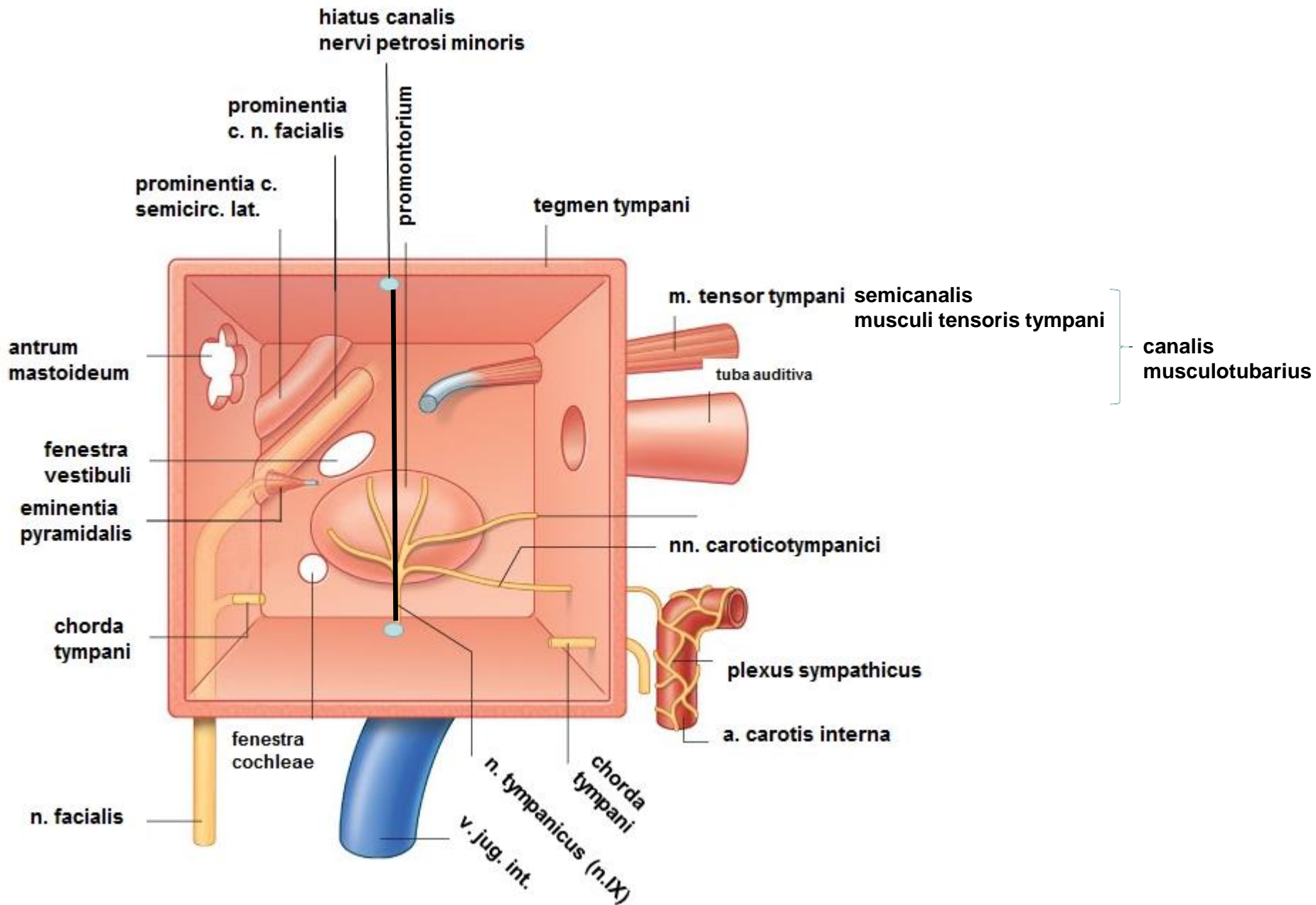
paries caroticus

- canaliculi caroticotympanici
- canalis musculotubarius
 - semicanalis musculi tensori tympani*
 - semicanalis tubae auditivae*

paries mastoideus

- antrum mastoideum





OSSICULA AUDITUS

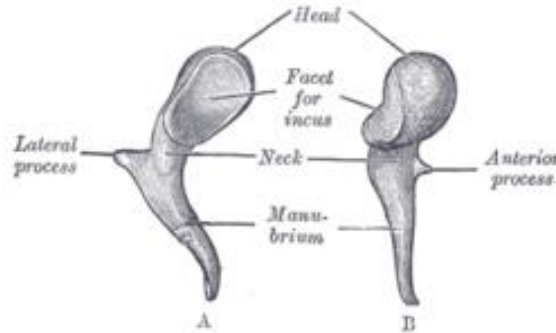
Malleus

Caput mallei

Manubrium mallei

Processus lateralis

Processus anterior



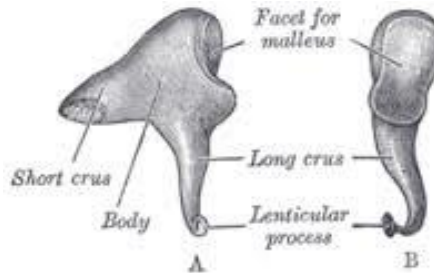
Art. incudomallearis

Incus

Corpus incudis

Crus longum

Crus breve



Art. incudostapedialis

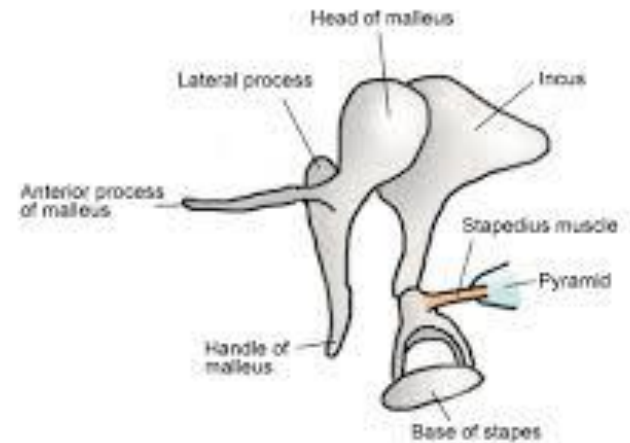
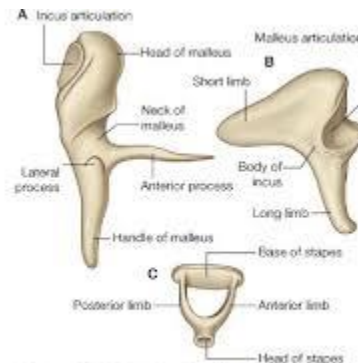
Stapes

Caput stapedis

Crus anterius

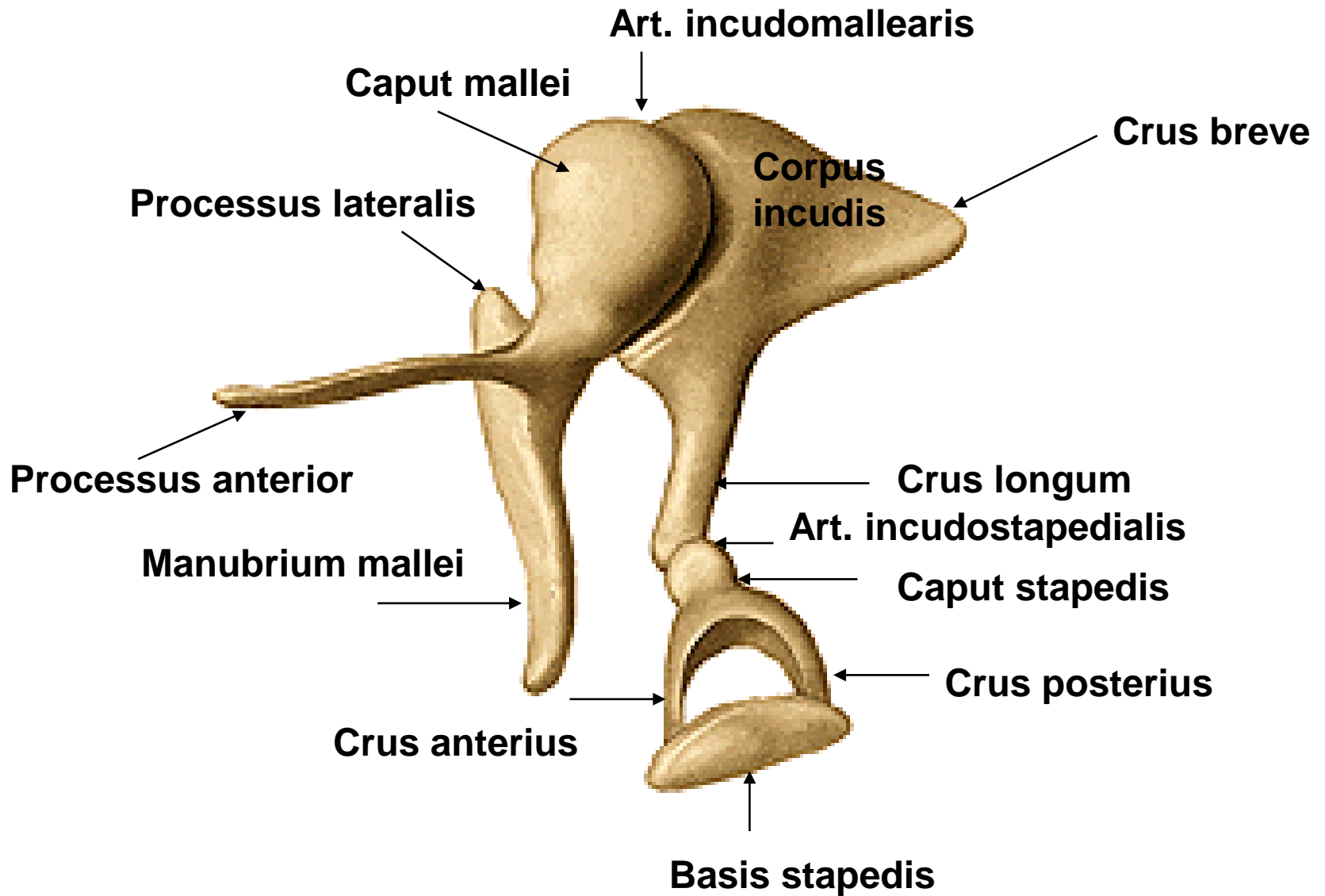
Crus posterius

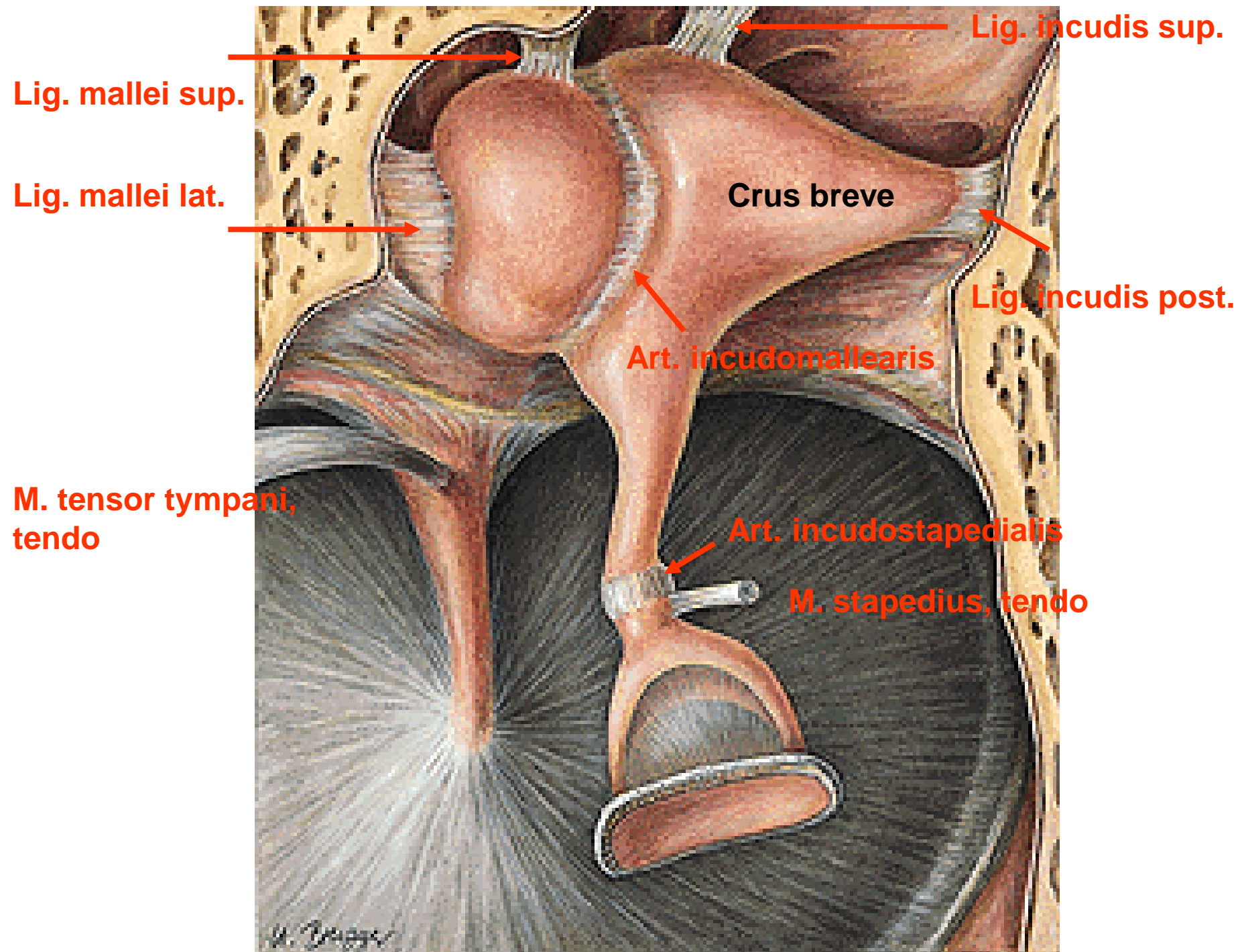
Basis stapedis

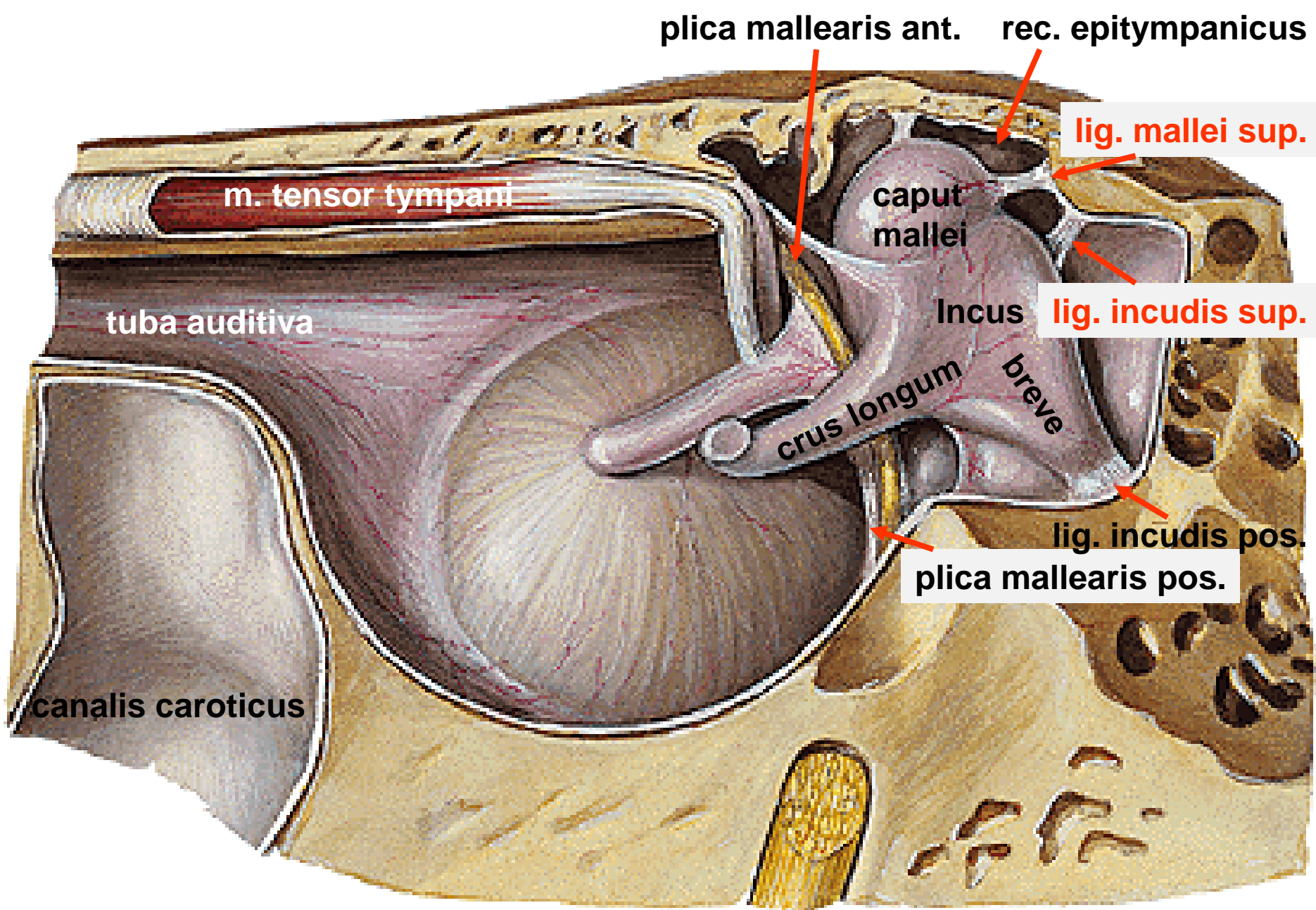


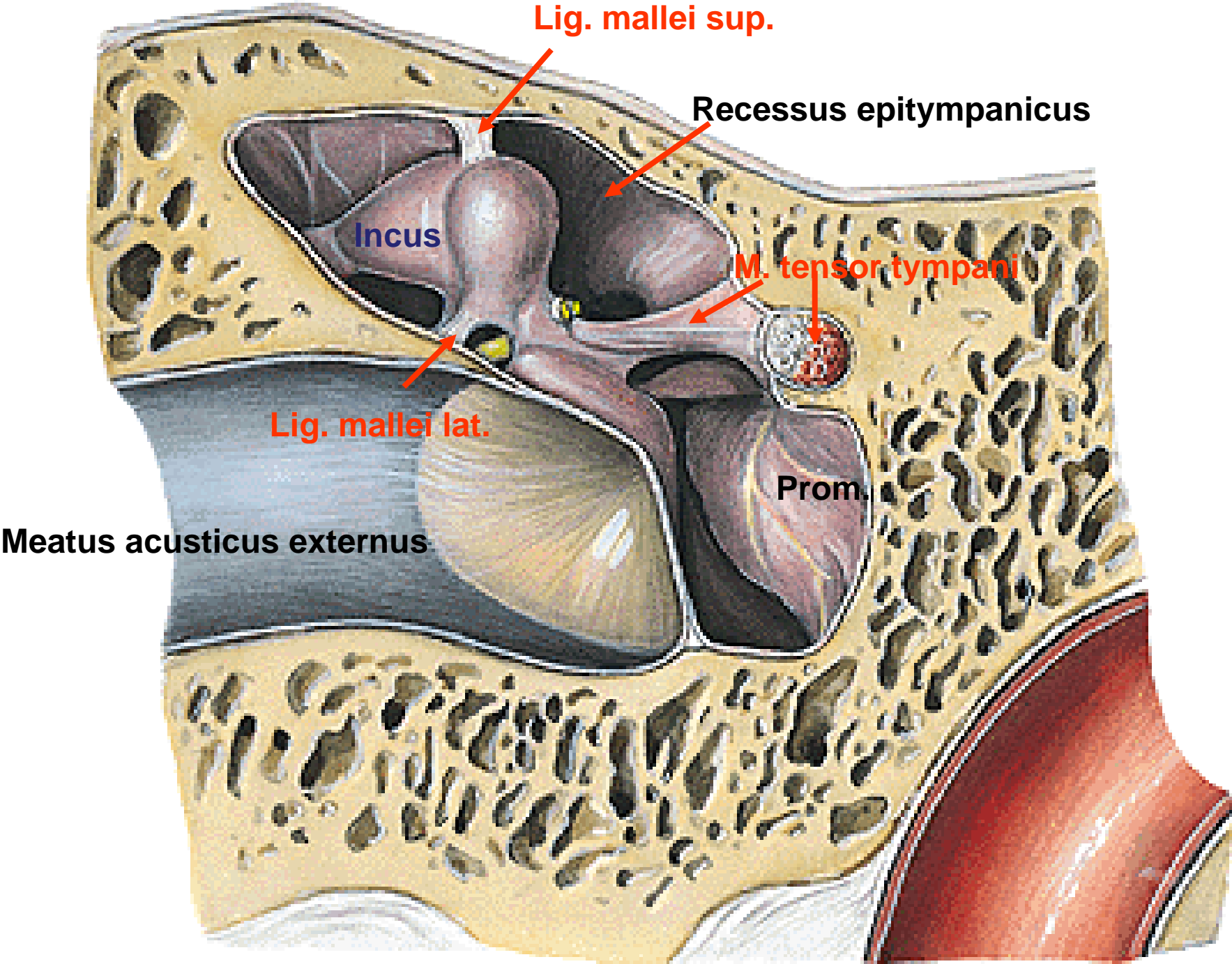
©2006 St. George's, University of London

OSSICULA AUDITUS









Lig. mallei sup.

Recessus epitympanicus

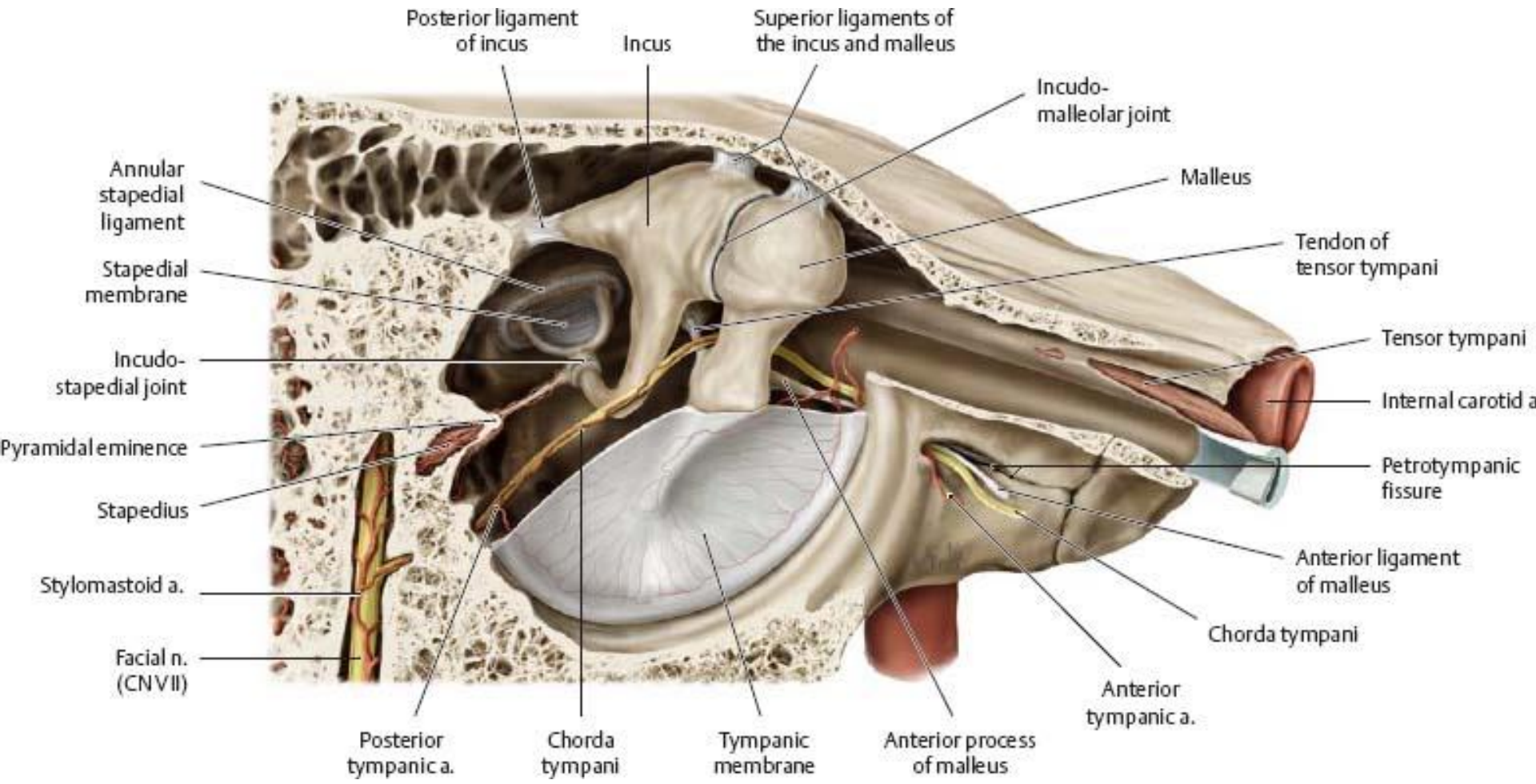
Incus

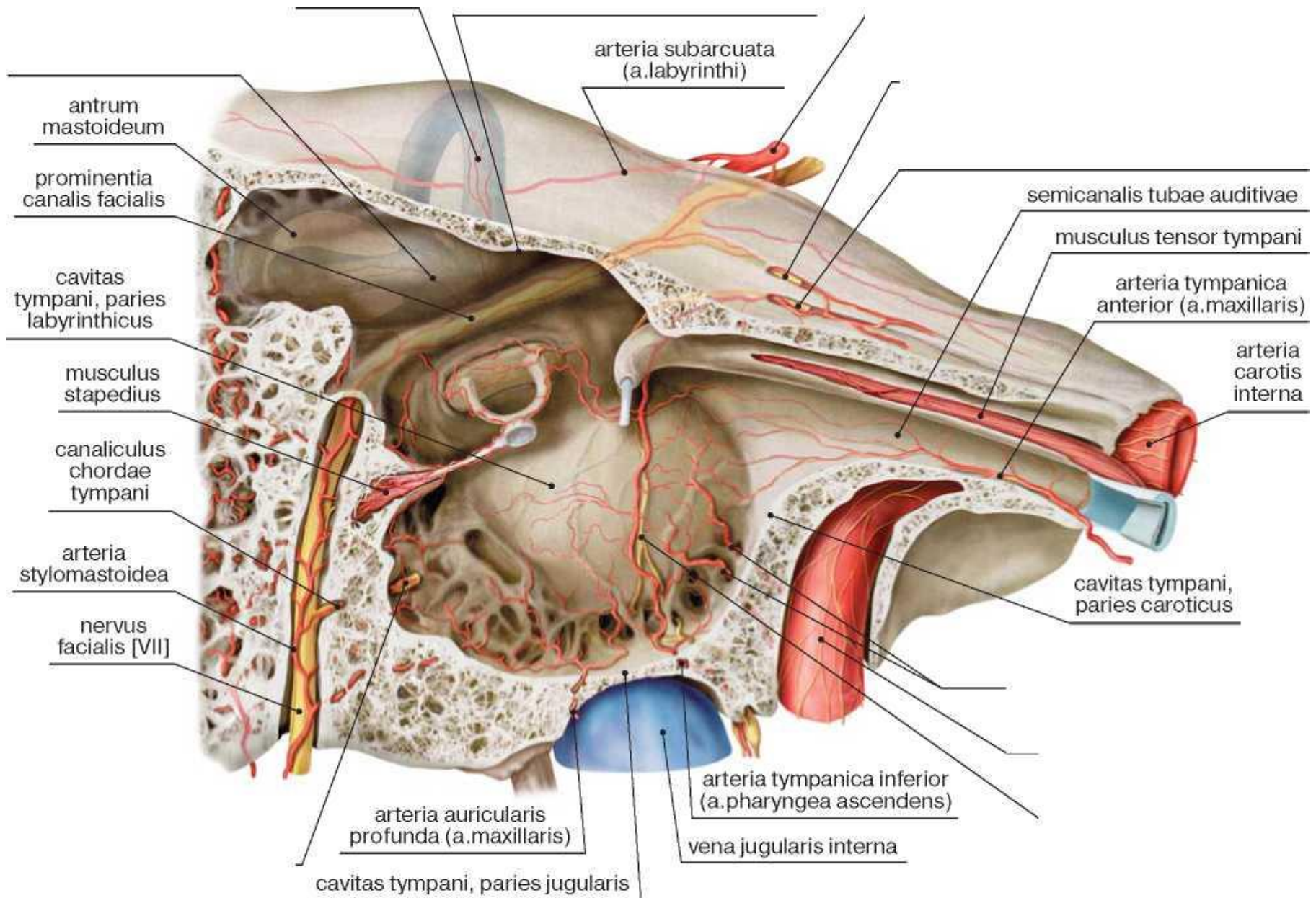
M. tensor tympani

Lig. mallei lat.

Prom.

Meatus acusticus externus





TUBA AUDITIVA, SLUCHOVÁ (EUSTACHOVA) TRUBICE



pars ossea tubae auditivae (10mm)

ostium tympanicum tubae auditivae

pars cartilaginea tubae auditivae (25 mm)

lamina medialis et lateralis

ostium pharyngeum tubae auditivae

torus tubarius

lymfatická tkáň (tonsilla tubaria)

TUBA AUDITIVA, SLUCHOVÁ (EUSTACHOVA) TRUBICE

ostium tympanicum tubae auditivae

pars ossea tubae auditivae (10mm)

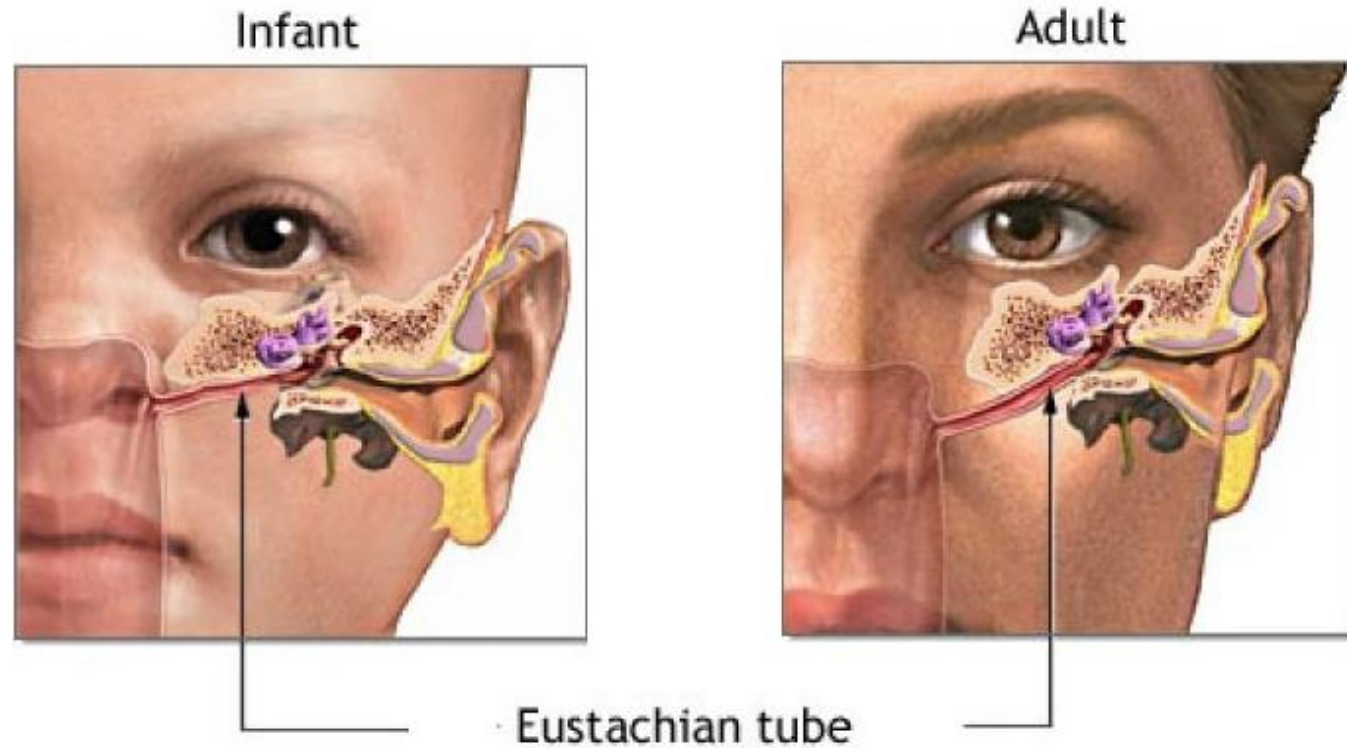
pars cartilaginea tubae auditivae (25 mm)

lamina medialis et lateralis

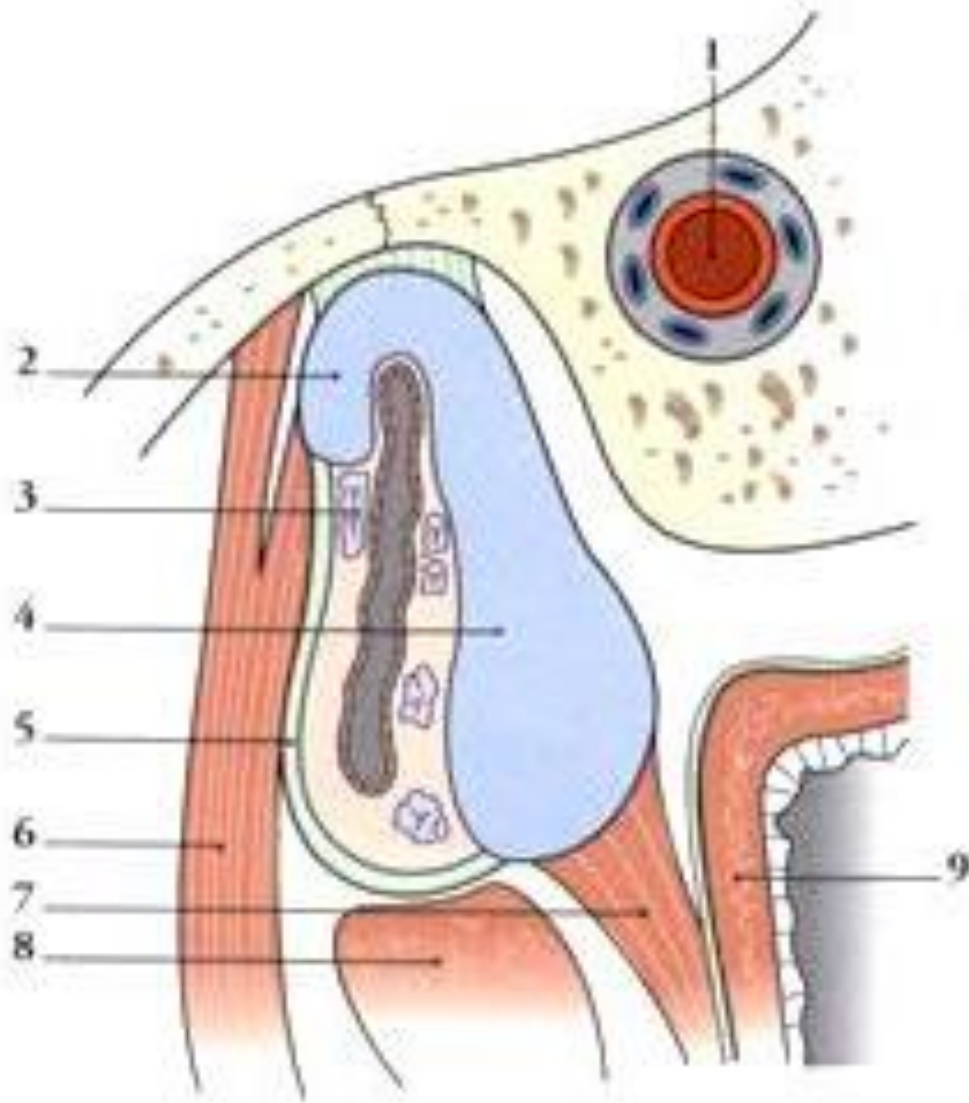
ostium pharyngeum tubae auditivae

torus tubarius

lymfatická tkáň (tonsilla tubaria)



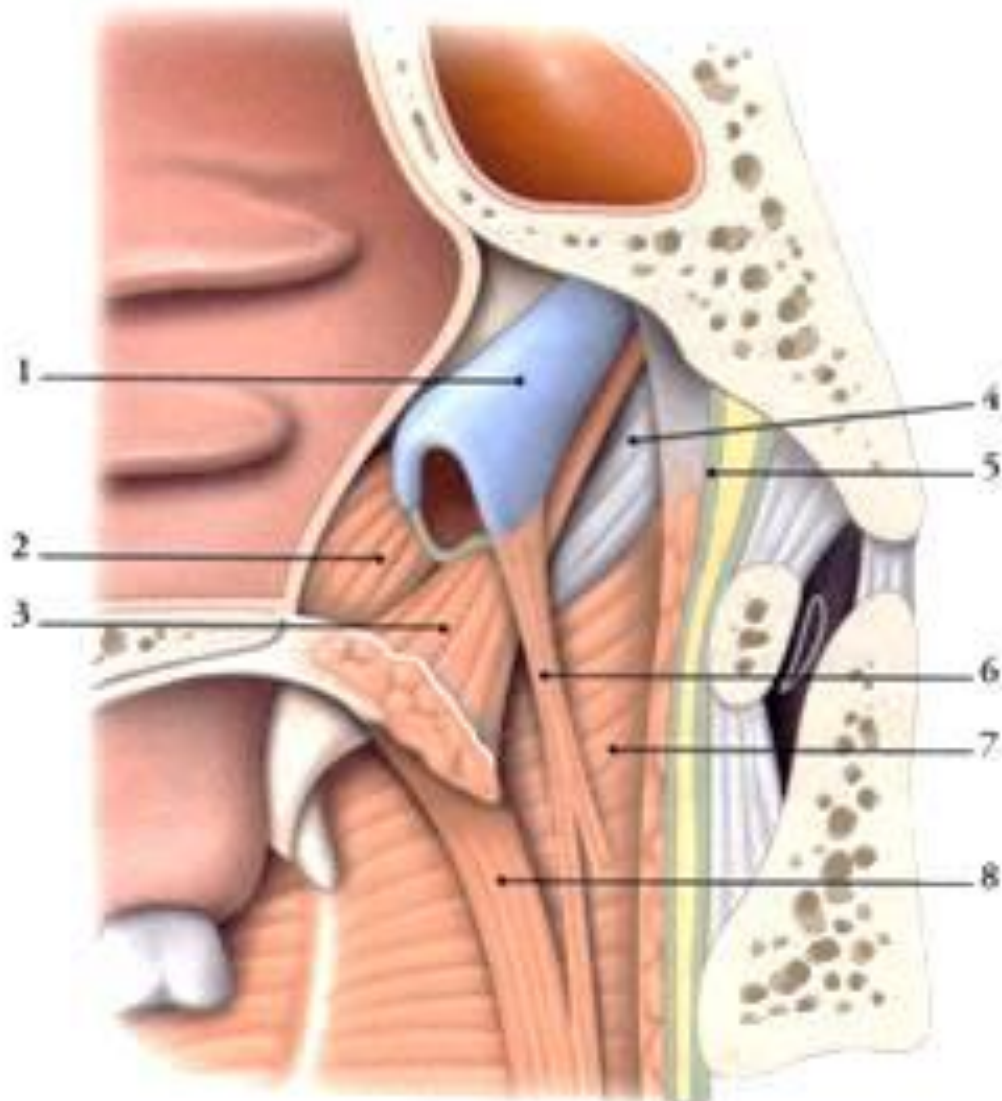
TUBA AUDITIVA, SLUCHOVÁ (EUSTACHOVA) TRUBICE



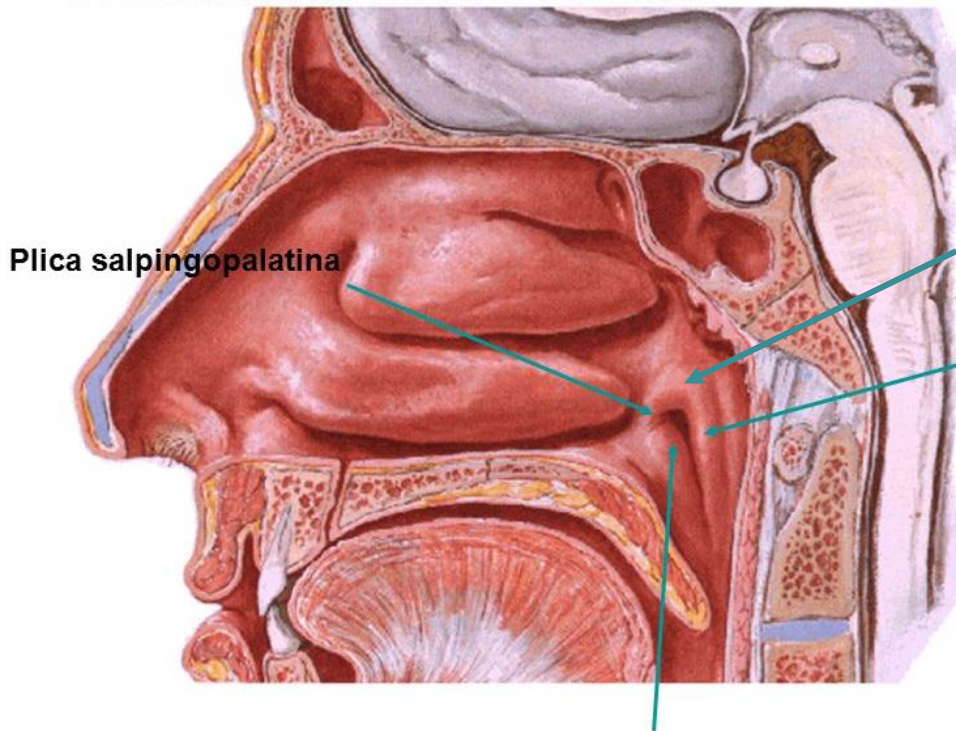
- 1- a. carotis int.;
- 2-lamina lateralis et 4-medialis;
- 6 – m. tensor veli palatini;
- 7- m. salpingopharyngeus;
- 8-m. levator veli palatini;
- 9-nasopharynx;

TORUS TUBARIUS, torus levatorius, plica salpingopharyngea

2- m. tensor v.p.; 3- m.levator v.p;
6- m. salpingopharyngeus; 8-m.palatopharyngeus

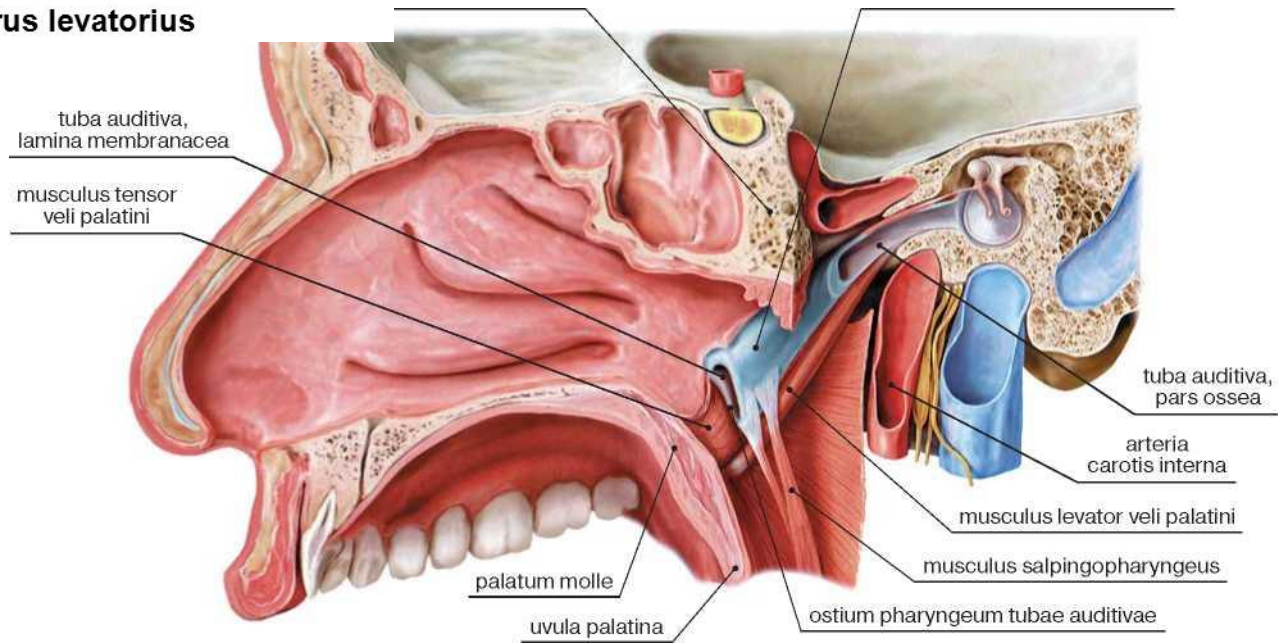


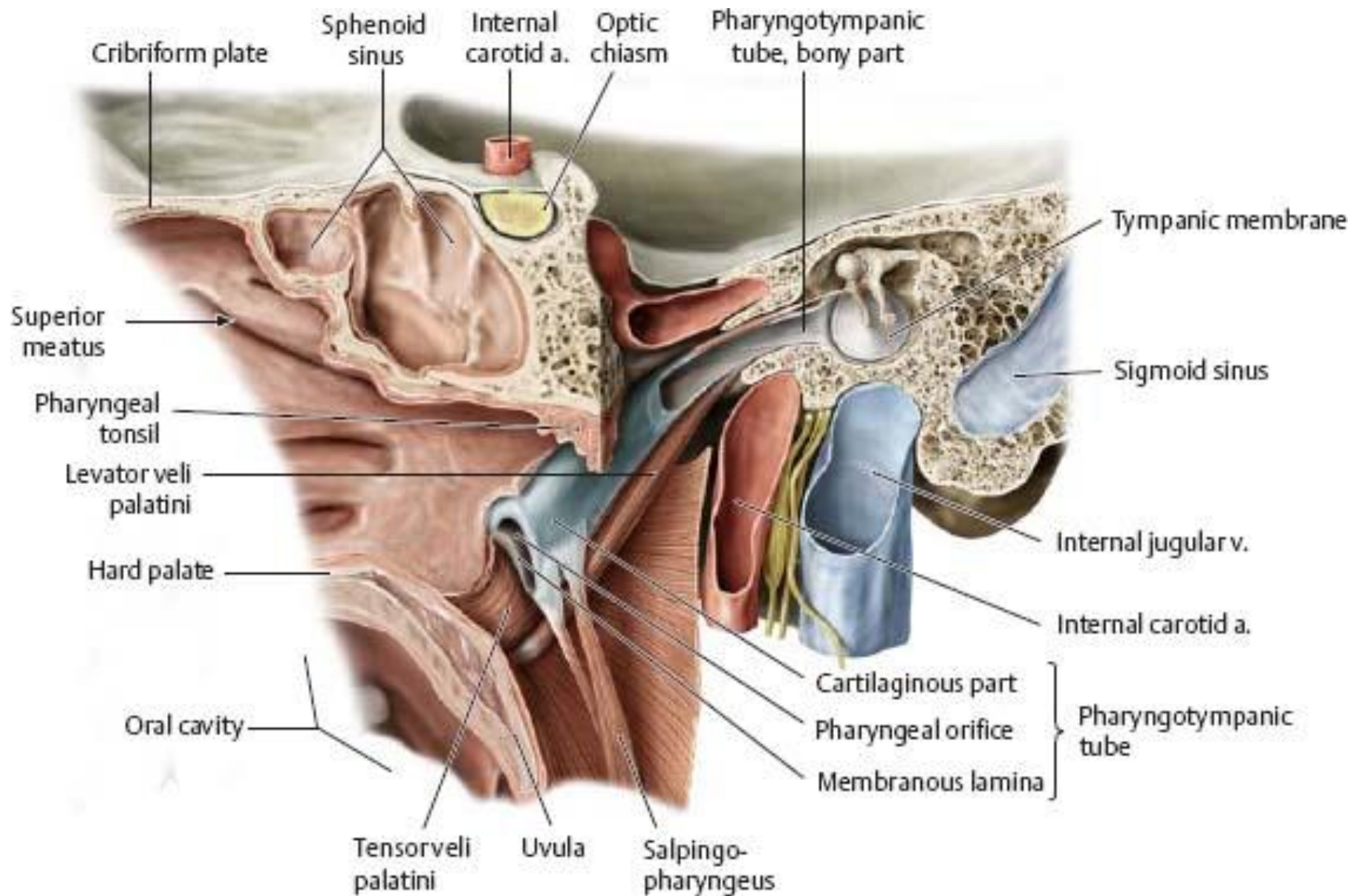
OSTIUM PHARYNGEUM TUBAE AUDITIVAE

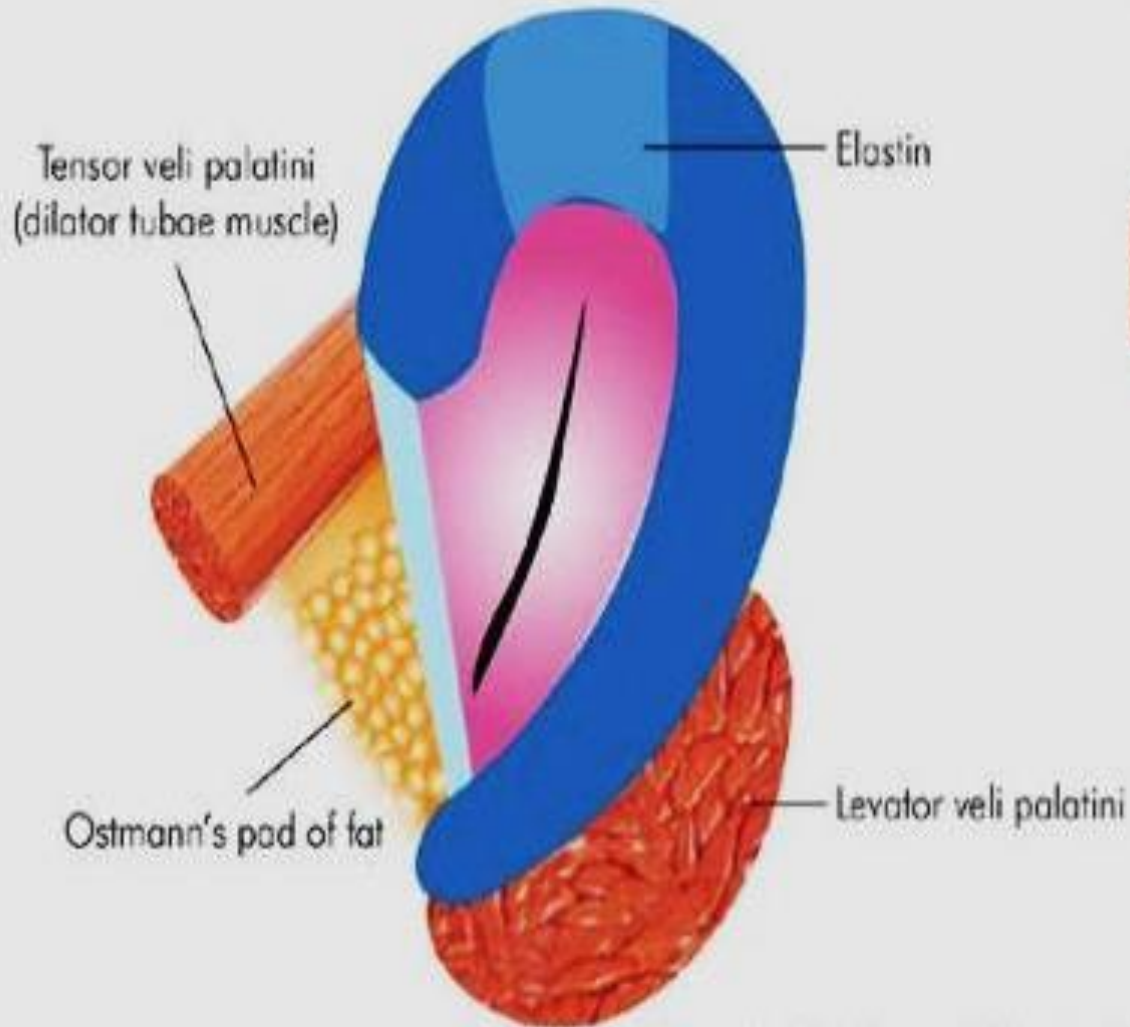


Tonsila tubaria

Torus levatorius

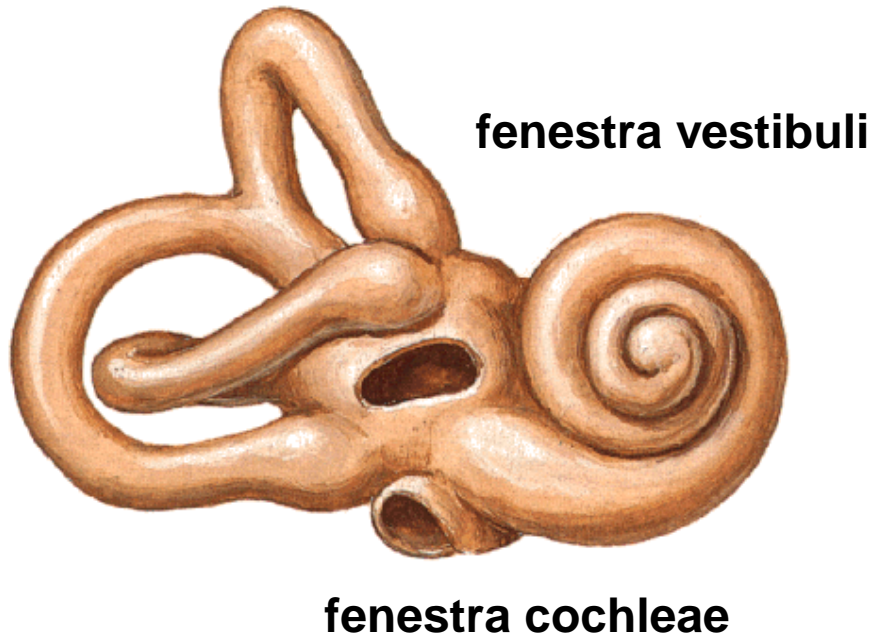




A**B**

AURIS INTERNA - LABYRINTHUS OSSEUS

Right Osseous Labyrinth
Anterolateral View



- vestibulum

-canales semicirculares ossei

anterior

posterior

crus communae

ampulla ossea

lateralis

crus simplex

- cochlea

COCHLEA (KOSTĚNÝ HLEMÝŽĎ)

modiolus

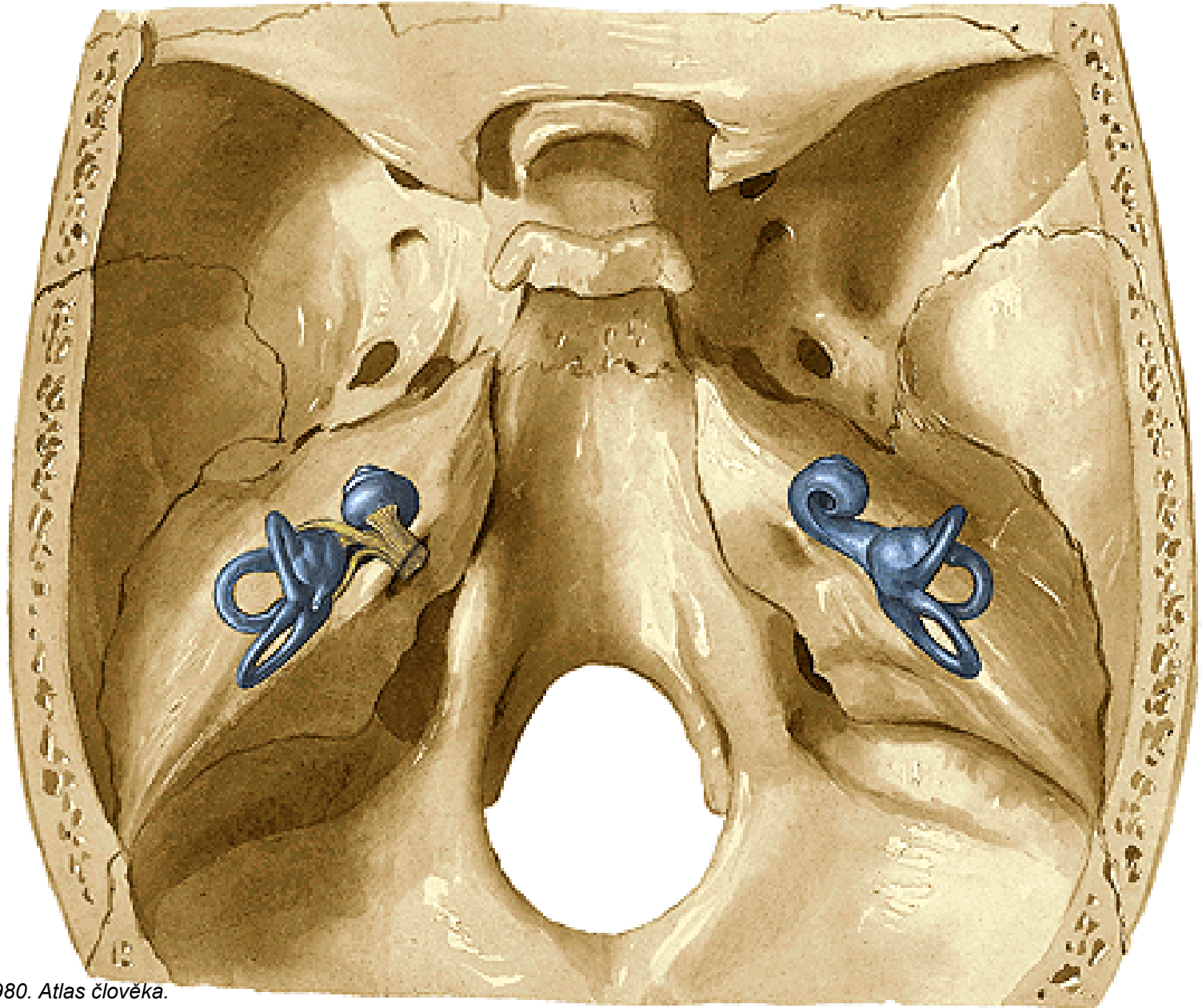
lamina spiralis ossea

canalis spiralis osseus

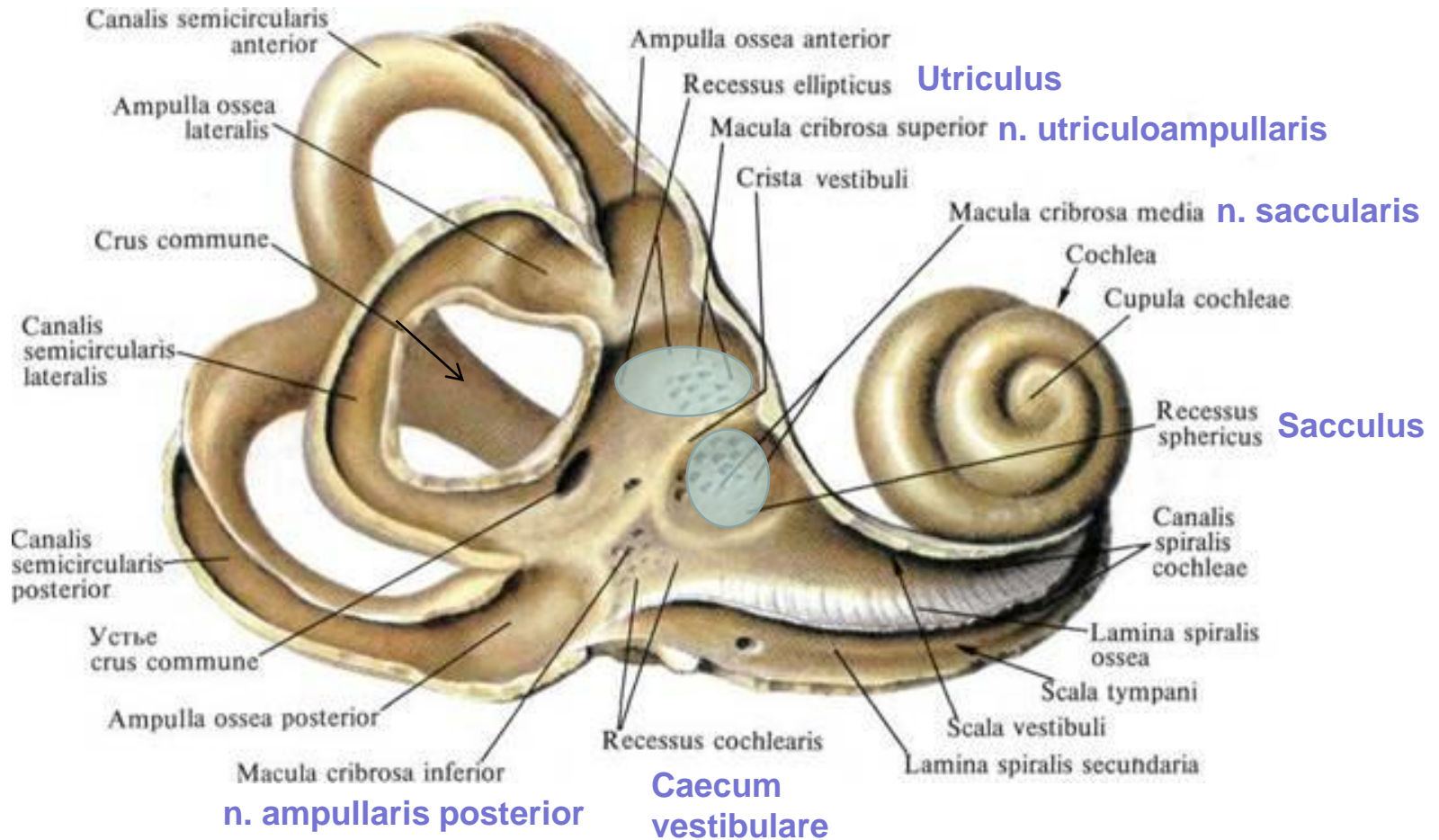
canales longitudinales

tractus spiralis foraminosus

AURIS INTERNA



VESTIBULUM



LABYRINTHUS MEMBRANACEUS

labyrinthus vestibularis

- utriculus et sacculus
- d. utriculosaccularis → d. endolymphaticus (aqueductus vestibuli) → saccus endolymph.
- ductus semicirculares

macula statica utriculi et sacculi

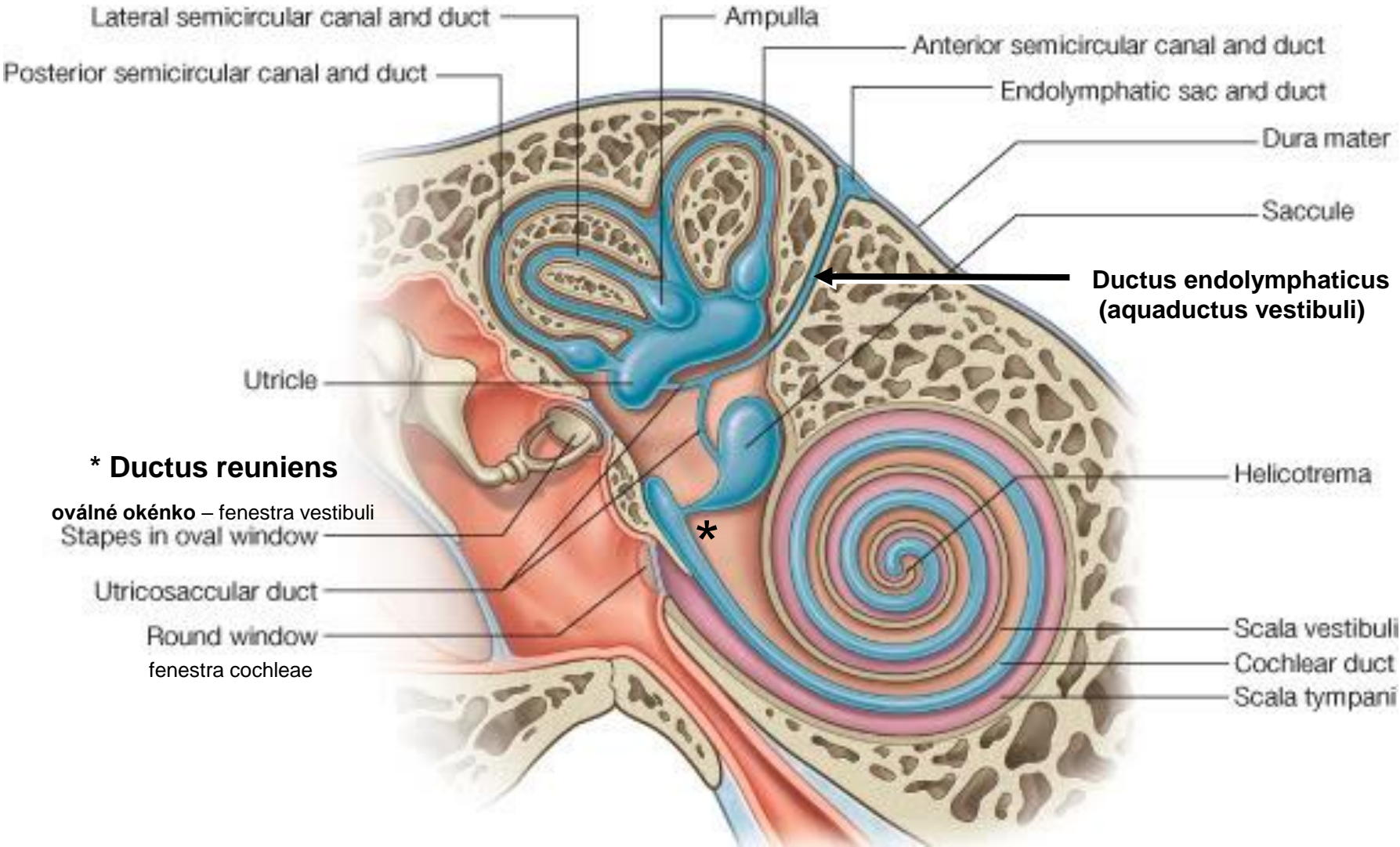
cristae ampullares

labyrinthus cochlearis

- ductus cochlearis *lamina basilaris*
 membrana vestibularis Reissneri
 stěna kostěného kanálku

organum spirale Corti *membrana tectoria*

LABYRINTHUS MEMBRANACEUS



Lateral semicircular canal and duct

Ampulla

Anterior semicircular canal and duct

Posterior semicircular canal and duct

Endolymphatic sac and duct

Dura mater

Sacculle

Ductus endolymphaticus (aqueductus vestibuli)

Utricle

*** Ductus reuniens**

oválné okénko – fenestra vestibuli
Stapes in oval window

*

Helicotrema

Utricossaccular duct

Round window
fenestra cochleae

Scala vestibuli
Cochlear duct
Scala tympani

LABYRINTHUS MEMBRANACEUS

Saccus endolymphaticus (*fossa subarcuata*)

Ductus endolymphaticus
(aquaductus vestibuli)

ant.

Ductus semicircularis

post.

lat.

Ductus cochlearis

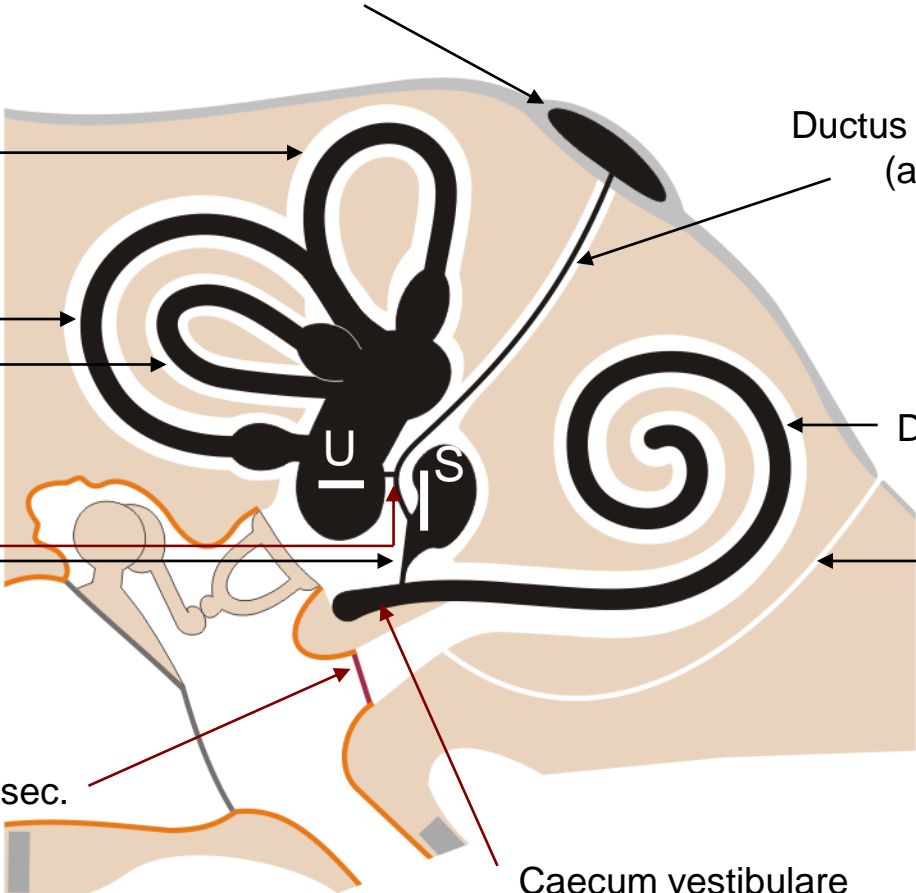
Ductus utriculosaccularis

Ductus reuniens

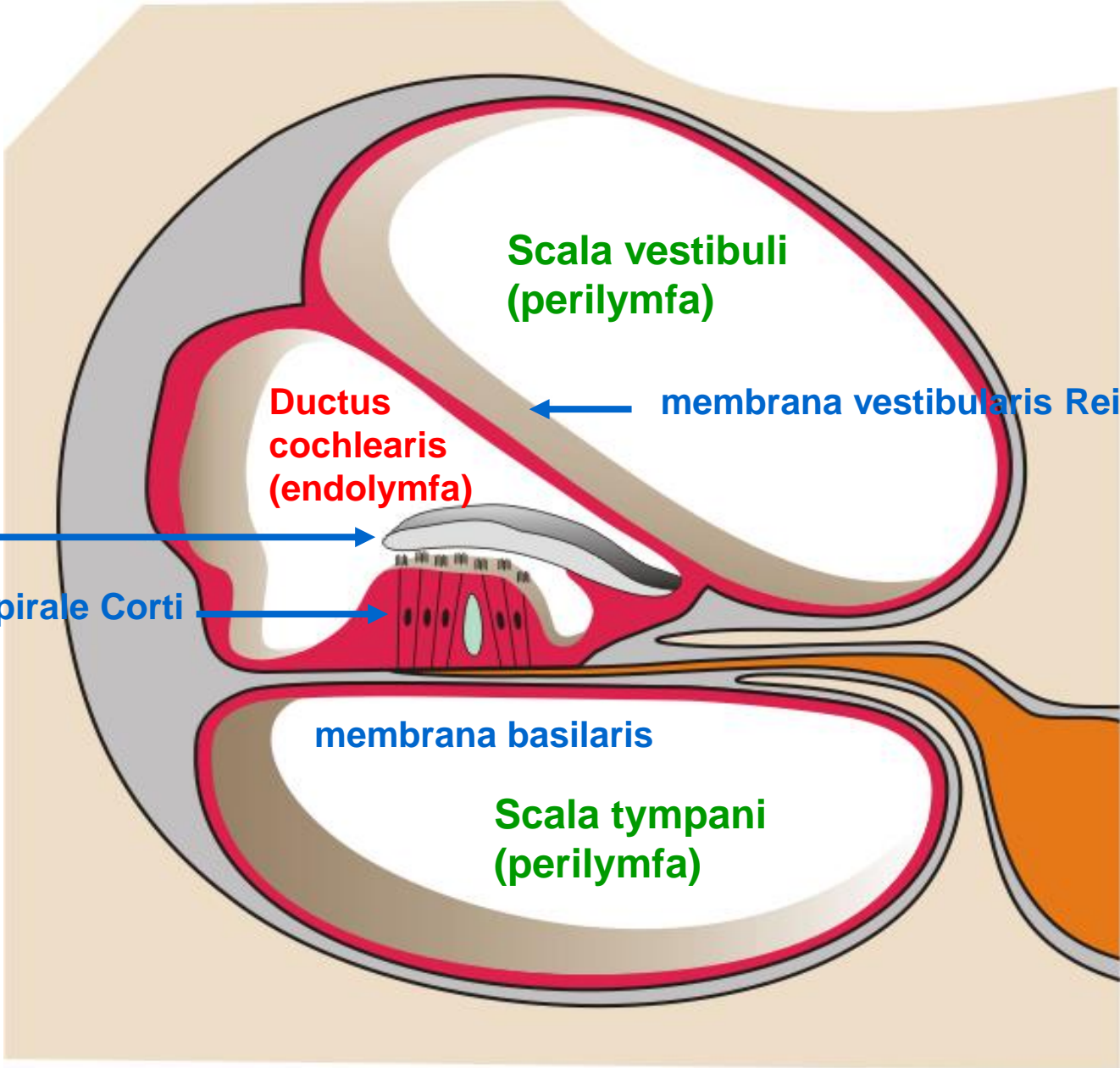
Canaliculus cochleae
(*apertura externa
canaliculi cochlae*)

Membrana tympani sec.

Caecum vestibulare



DUCTUS COCHLEARIS



Scala vestibuli
(perilymfa)

Ductus
cochlearis
(endolymfa)

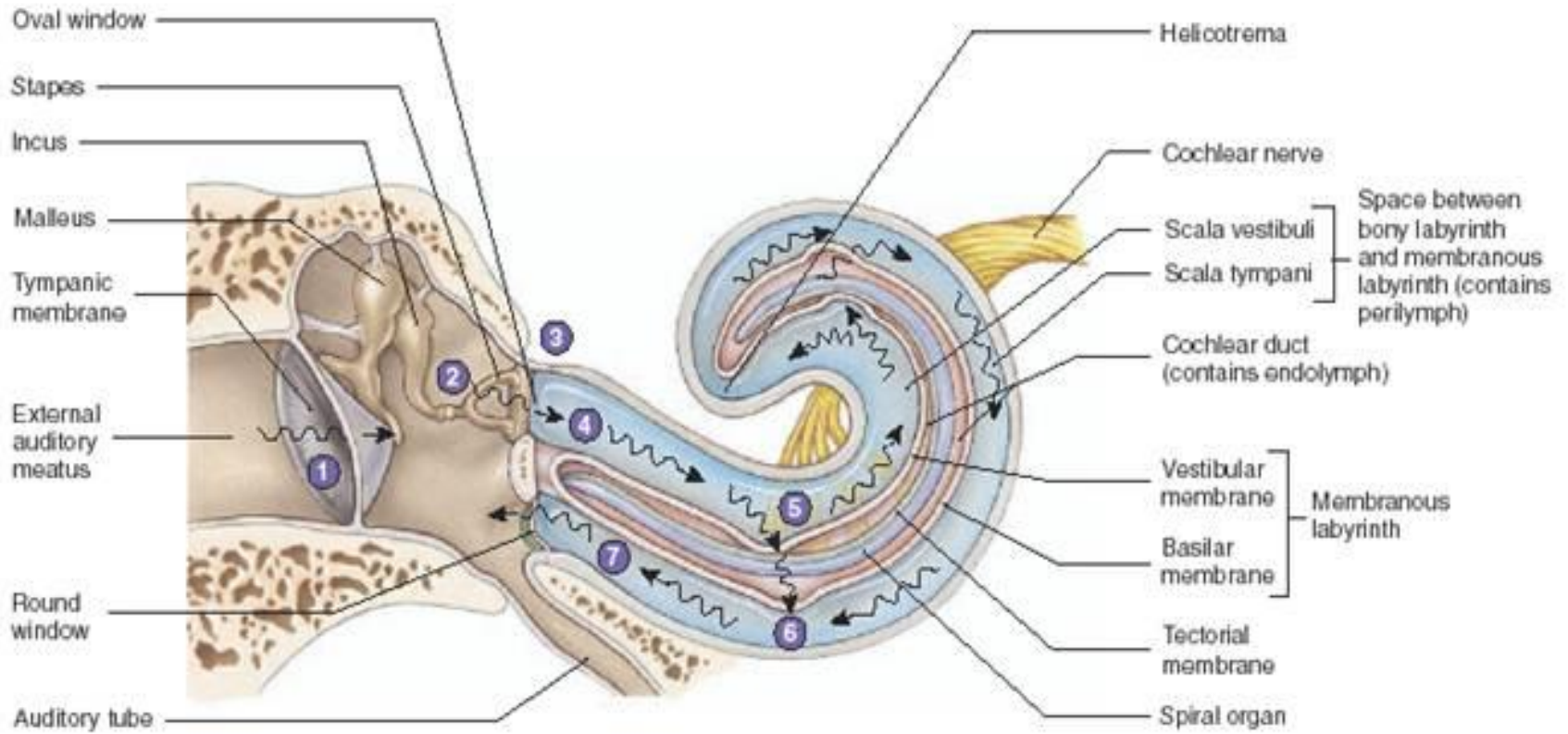
membrana vestibularis Reissneri

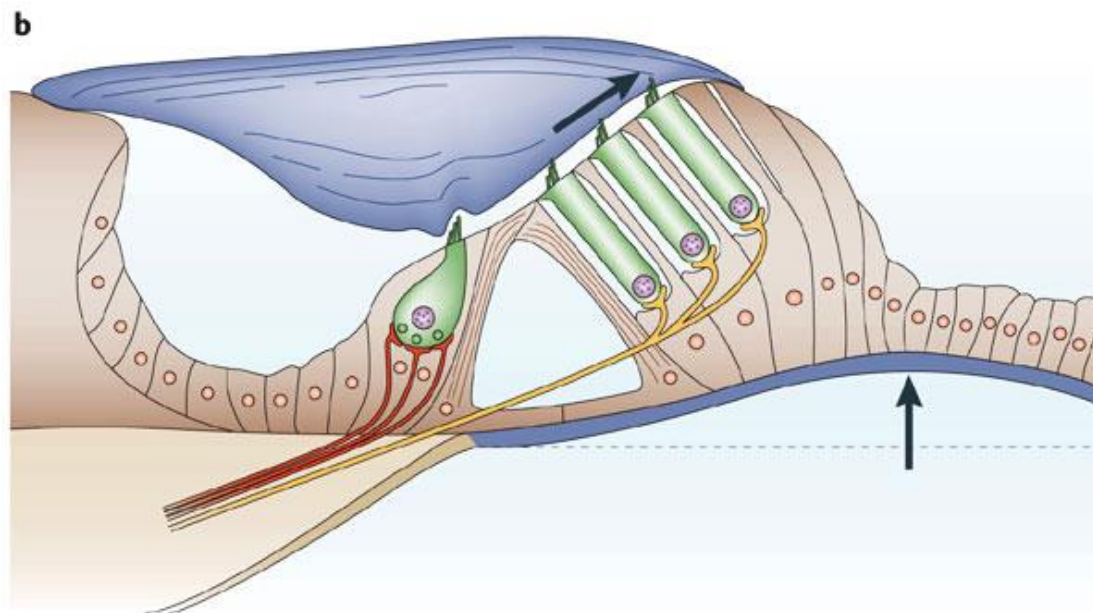
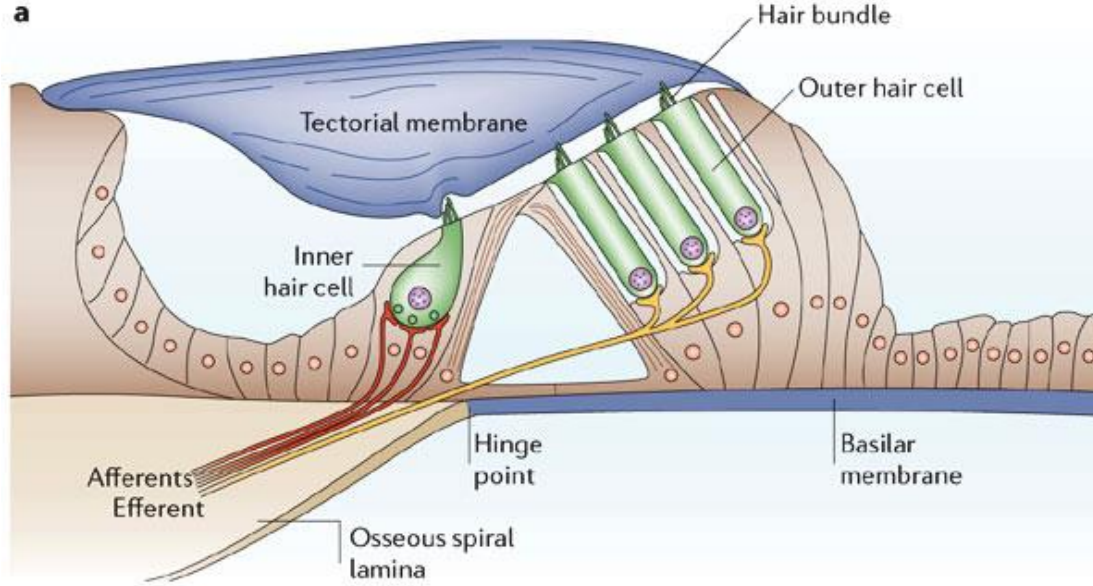
membrana
tectoria

organum spirale Corti

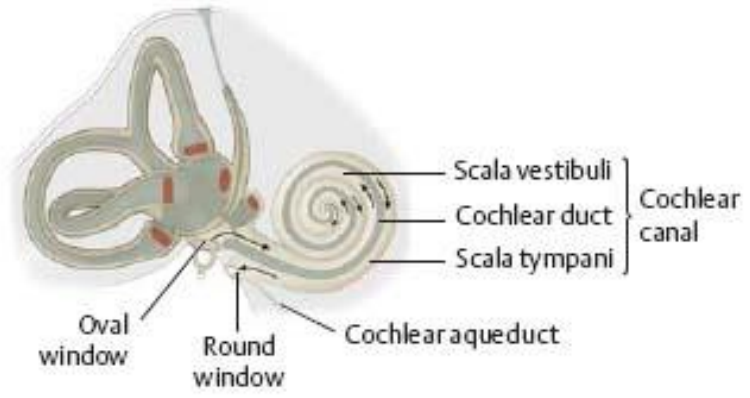
membrana basilaris

Scala tympani
(perilymfa)

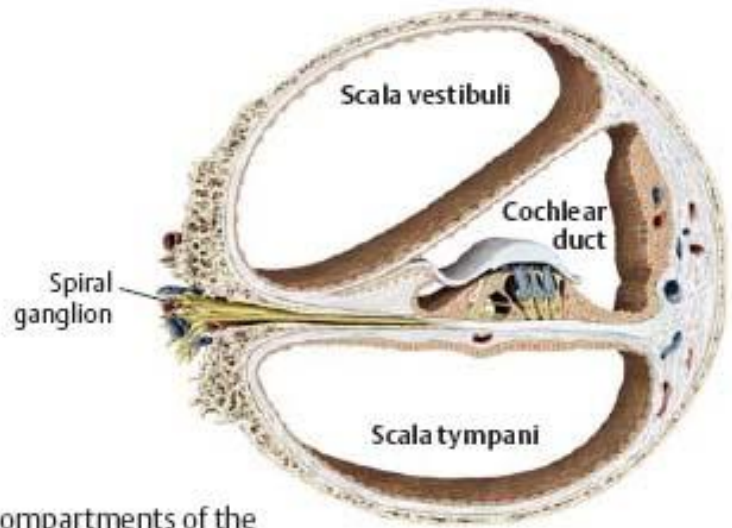




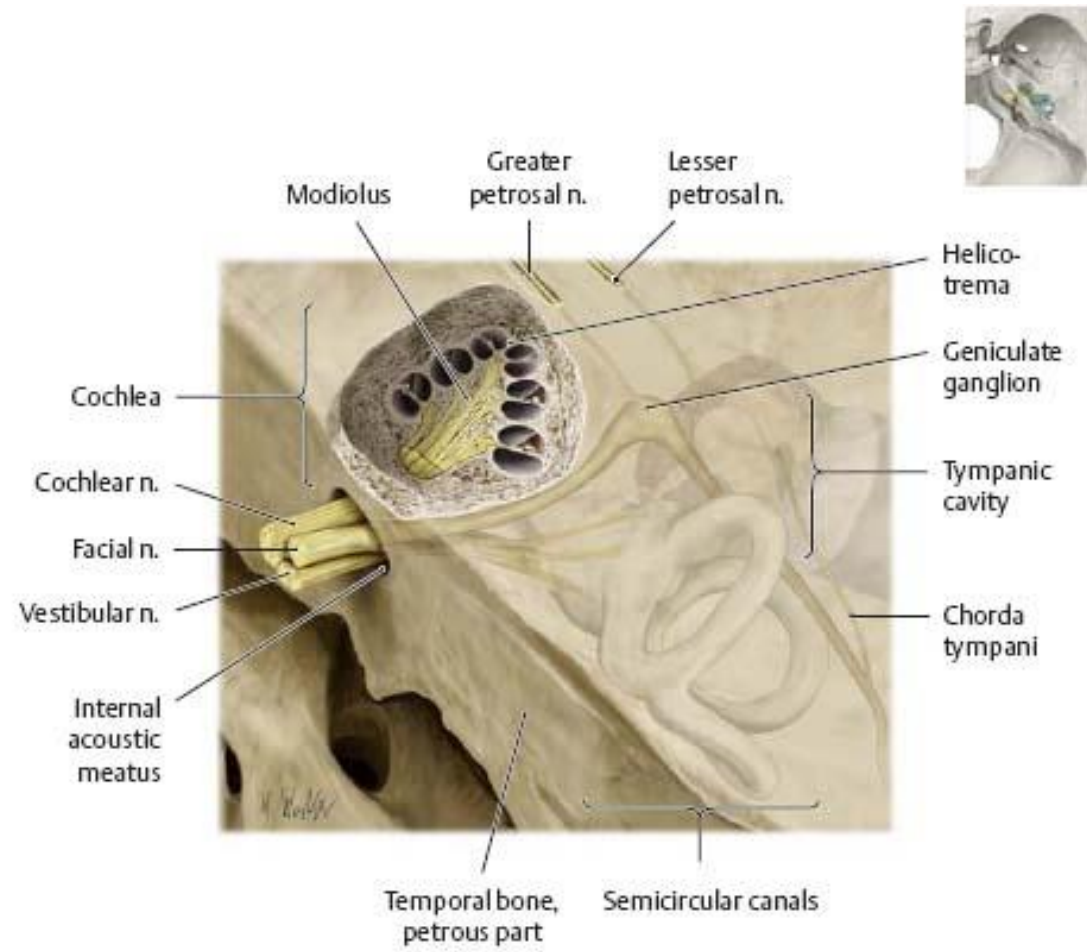
NERVUS VESTIBULOCOCHLEARIS



A Schematic.



B Compartments of the cochlear canal, cross section.



C Location of the cochlea. Superior view of the petrous part of the temporal bone with the cochlea sectioned transversely. The bony canal of the cochlea (spiral canal) makes 2.5 turns around its bony axis (modiolus).

NERVUS VESTIBULOCOCHLEARIS

