

DIGESTIVE SYSTEM II.

1

INTESTINE (SMALL, LARGE)

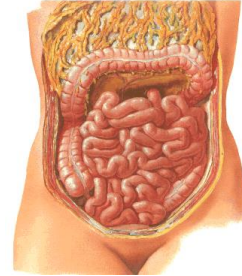
SMALL INTESTINE

3-5 m, intestinal loops

DUODENUM

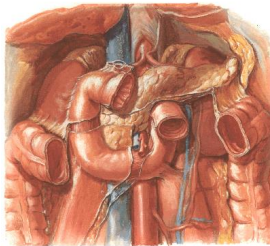
JEJUNUM

ILEUM



2

DUODENUM



Pars superior
(ampulla, bulbus duodeni)

Flexura duodeni sup.

Pars descendens

Flexura duodeni inf.

Pars horizontalis

Pars dextra et sinistra

Pars ascendens

Flexura duodenojejunalis

12 inches (25-30 cm)-Herofilos, makes the loop around L2

3

Plica longitudinalis duodeni

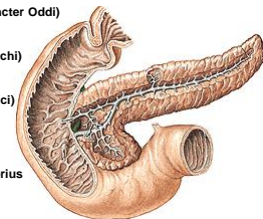
Papilla duodeni major (Vateri)

ampulla hepatopancreatica
(m. sphincter papillae
hepatopancreaticae, m. sphincter Oddi)

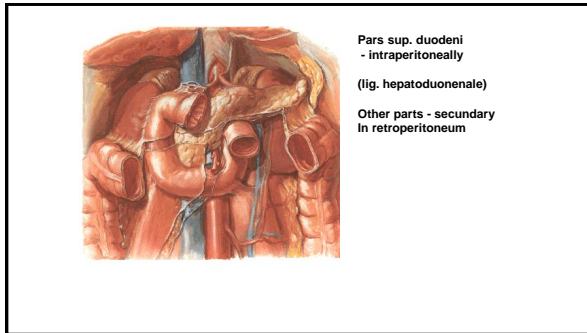
ductus choledochus
(m. sphincter ductus choledochi)

ductus pancreaticus major
(m. sphincter ductus pancreatici)

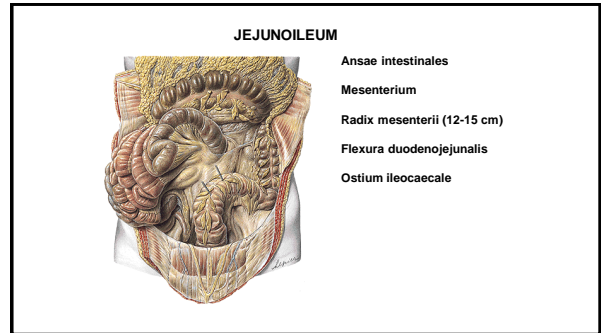
Papilla duodeni minor
ductus pancreaticus accessorius



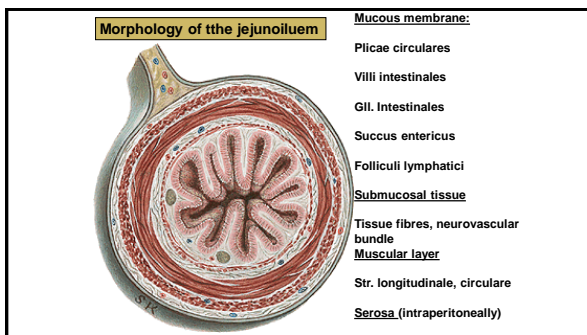
4



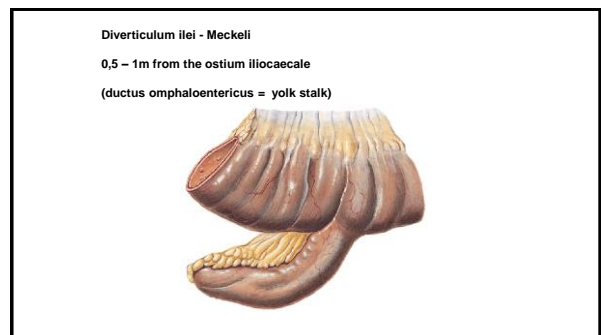
5



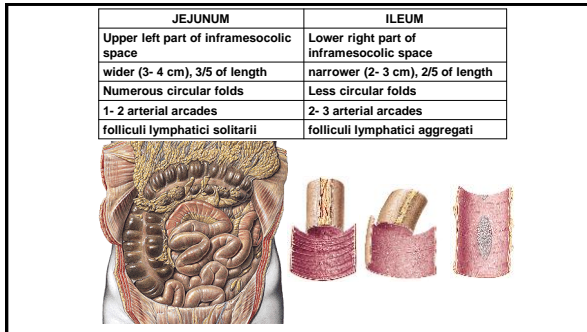
6



7



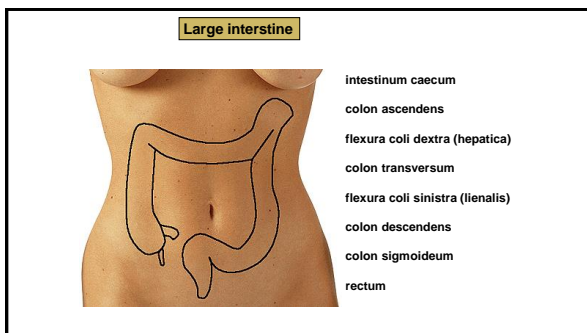
8



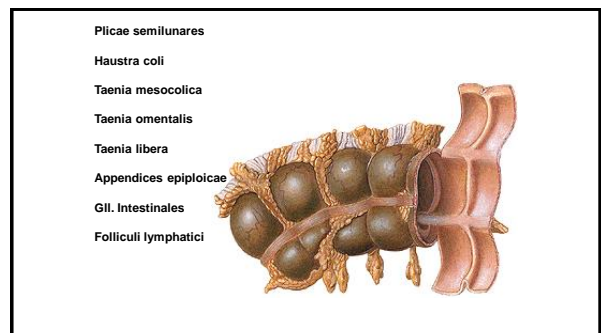
9



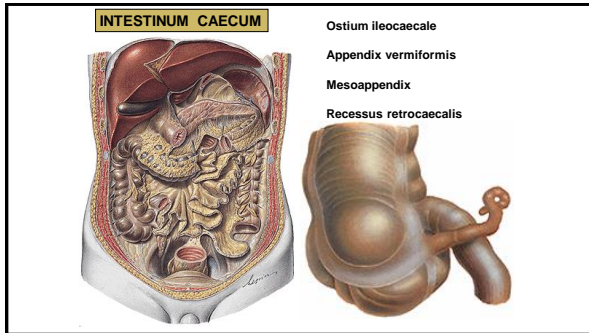
10



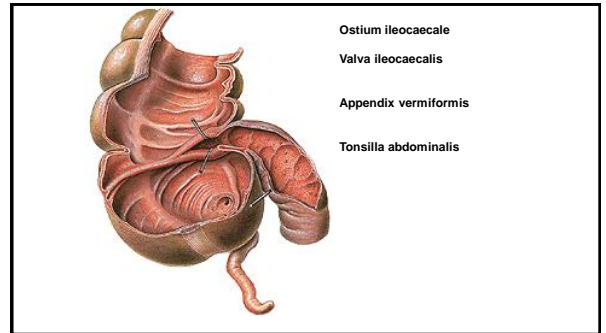
11



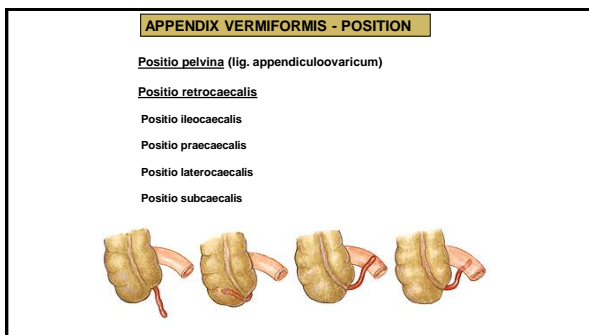
12



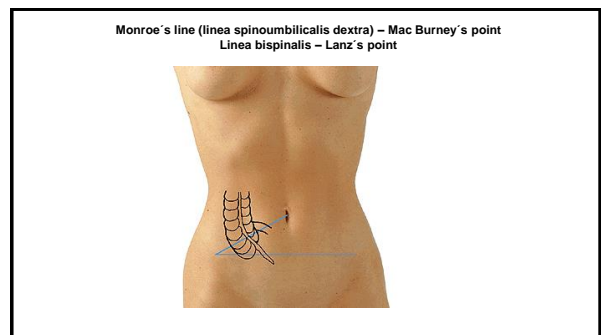
13



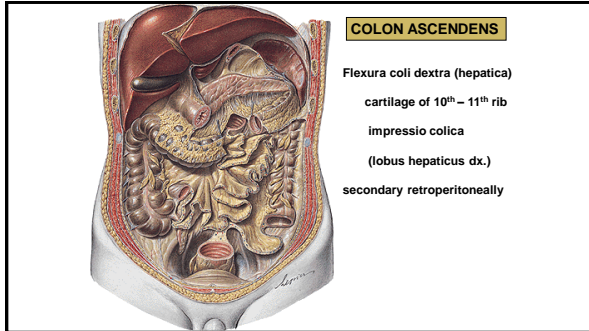
14



15



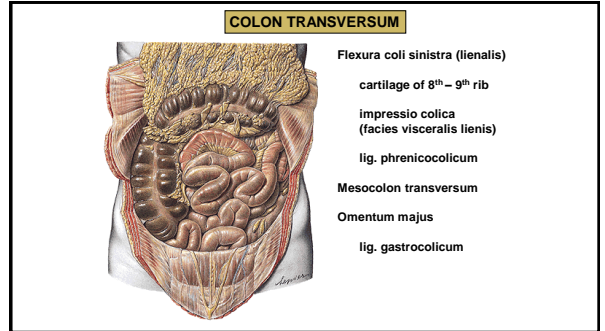
16



COLON ASCENDENS

Flexura coli dextra (hepatica)
 cartilage of 10th – 11th rib
 impressio colica
 (lobus hepaticus dx.)
 secondary retroperitoneally

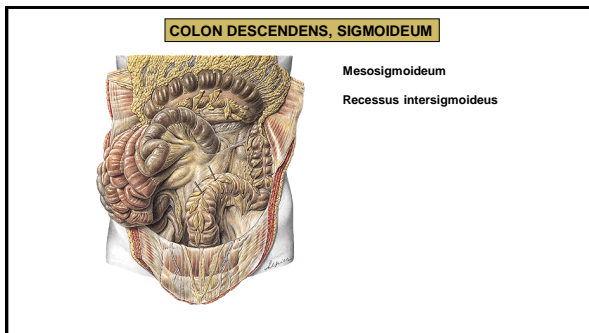
17



COLON TRANSVERSUM

Flexura coli sinistra (lienalis)
 cartilage of 8th – 9th rib
 impressio colica
 (facies visceralis lienis)
 lig. phrenicocolicum
 Mesocolon transversum
 Omentum majus
 lig. gastrocolicum

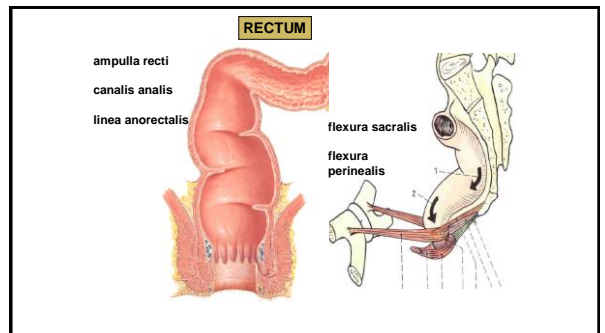
18



COLON DESCENDENS, SIGMOIDEUM

Mesosigmoidum
 Recessus intersigmoideus

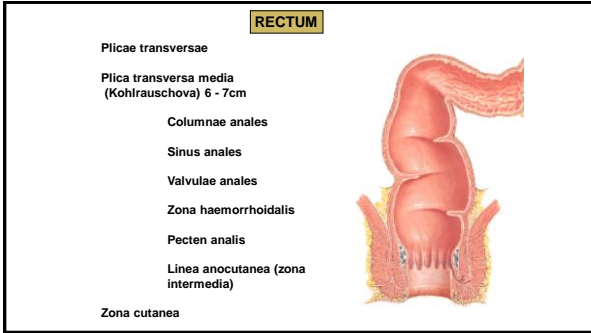
19



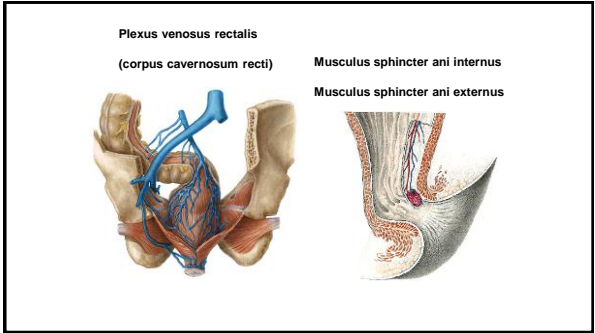
RECTUM

ampulla recti
 canalis analis
 linea anorectalis
 flexura sacralis
 flexura perinealis

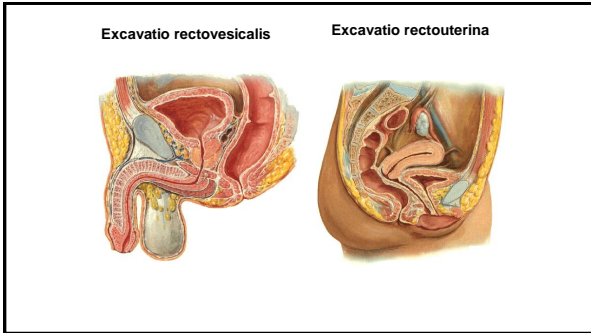
20



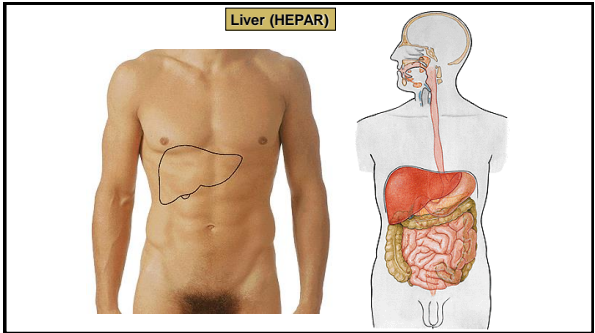
21



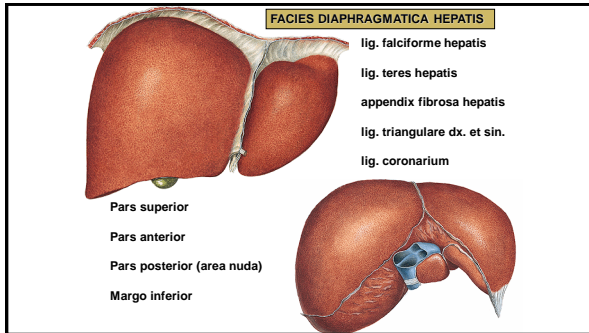
22



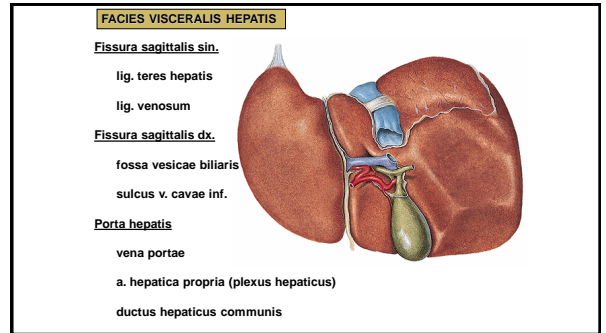
23



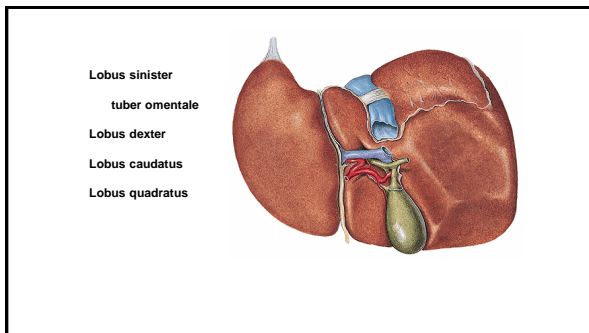
24



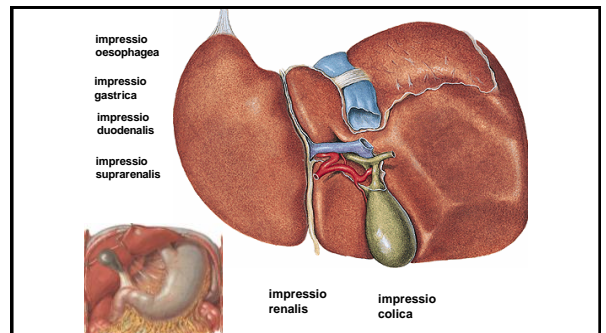
25



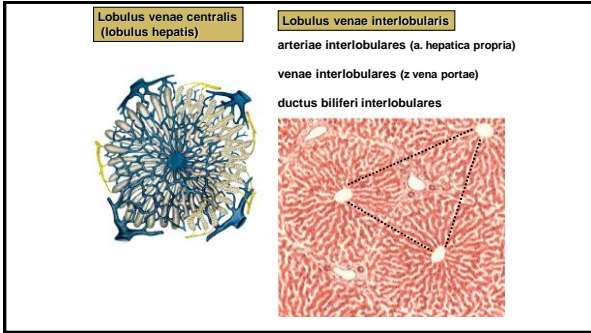
26



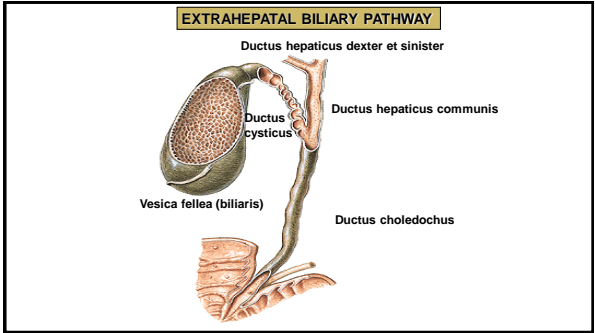
27



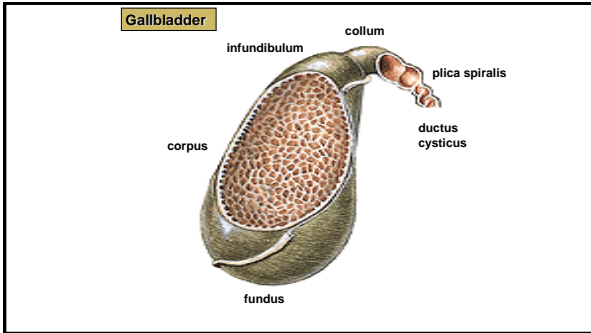
28



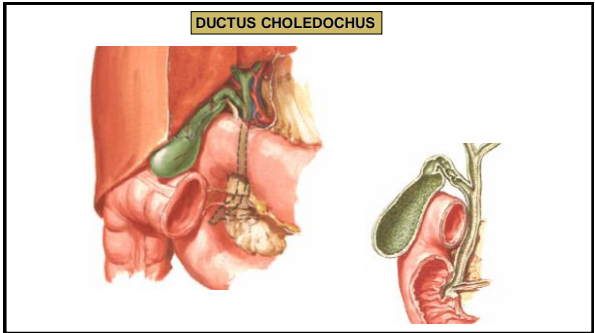
29



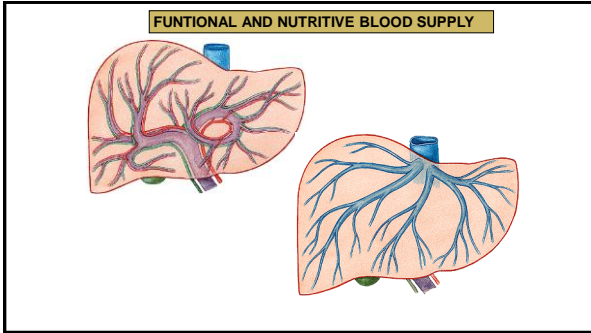
30



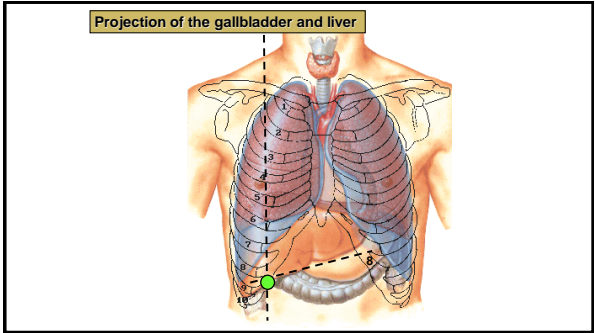
31



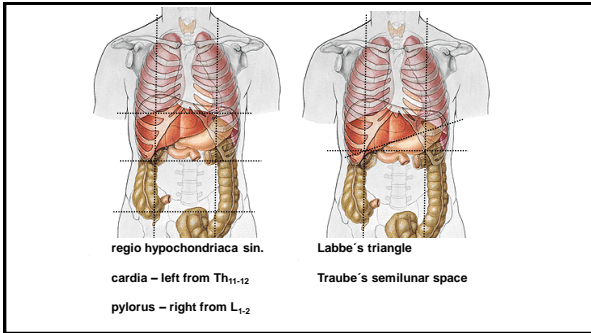
32



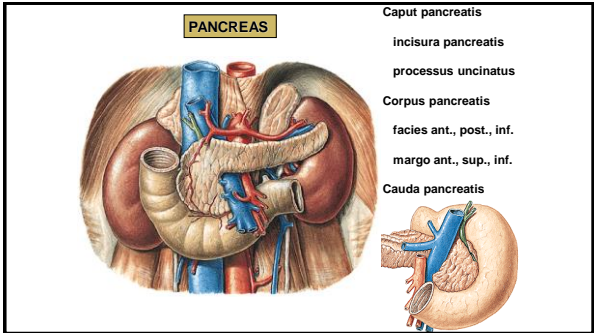
33



34



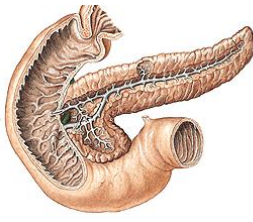
35



36

PARS EXOCRINA PANCREATIS

- Serous tuboalveolar gland
- Succus pancreaticus
- Capsula pancreatis
- Septa
- Lobi et lobuli pancreatis
- Intra- a interlobar ducts
- Ductus pancreaticus acces.
- Papilla duodeni minor
- Ductus pancreaticus
- Papilla duodeni major

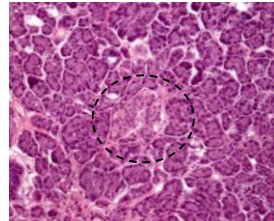


37

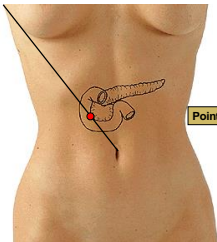
PARS ENDOCRINA PANCREATIS

Insulae pancreaticae – Islets of Langerhans

Insulin, glukagon



38

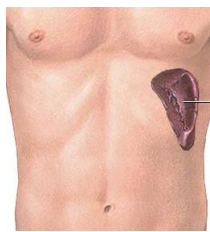


Point of Desjardin (6 cm from navel)

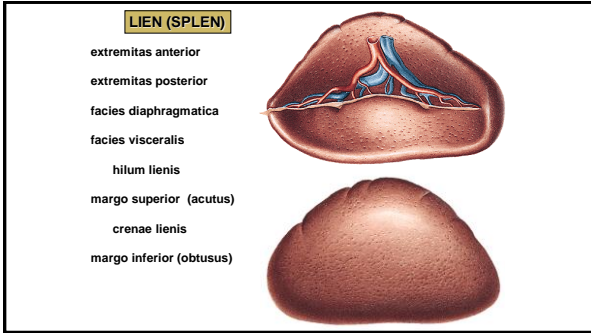
39

Spleen

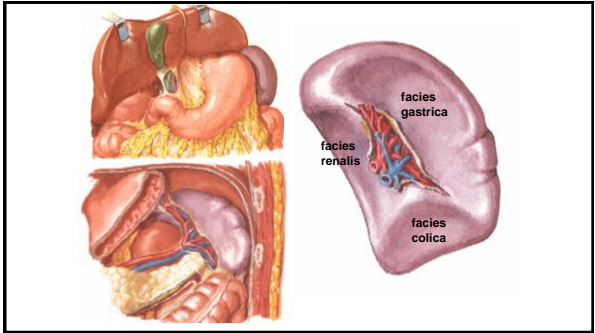
- Supramesocolic part of peritoneal cavity
- Storage of blood
- Erythrocyte degradation
- Production of lymphocytes
- Hematopoiesis (children)



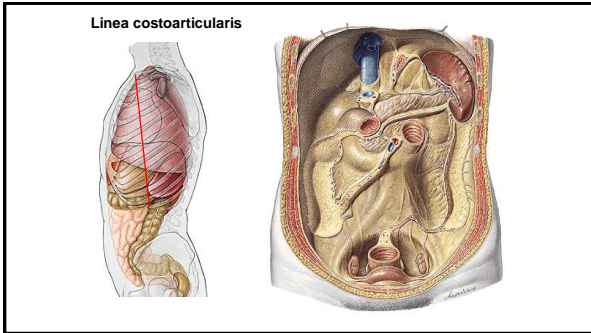
40



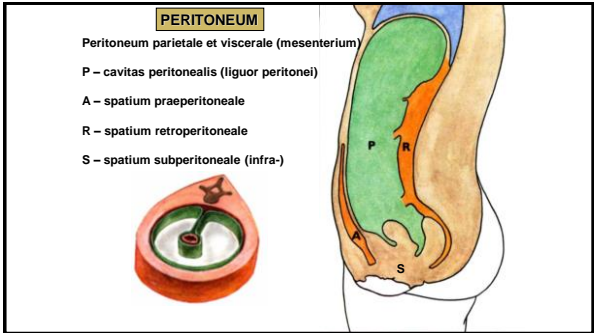
41



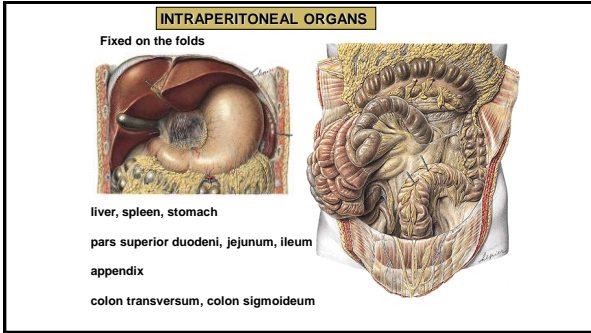
42



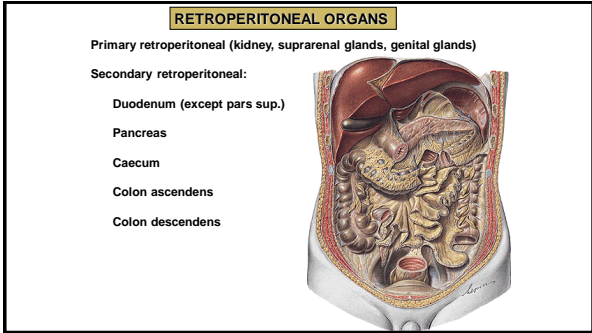
43



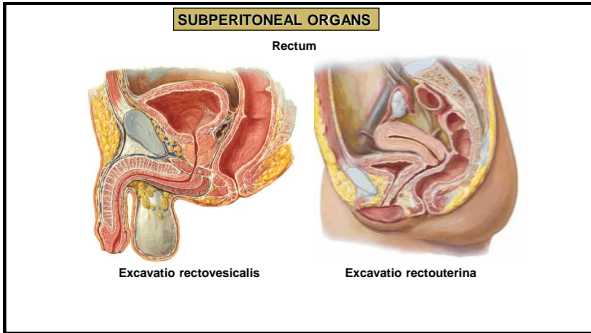
44



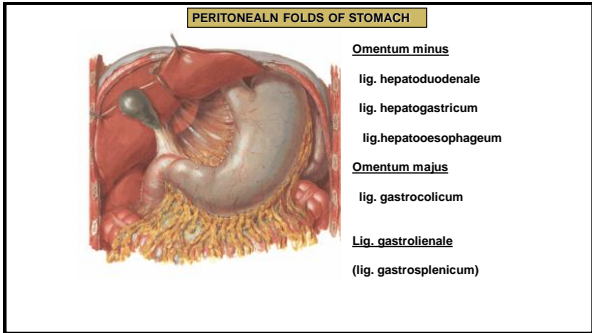
45



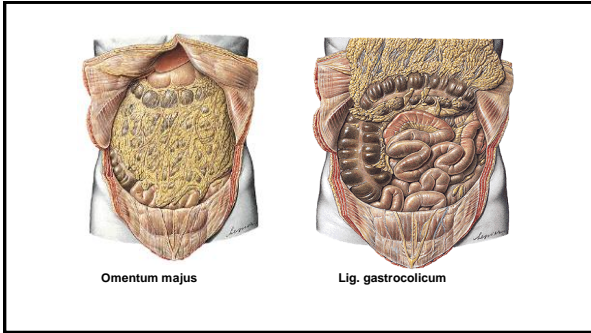
46



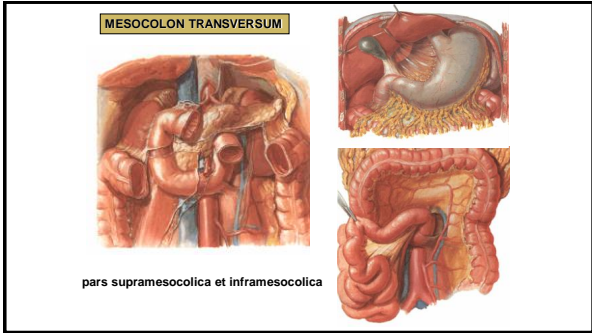
47



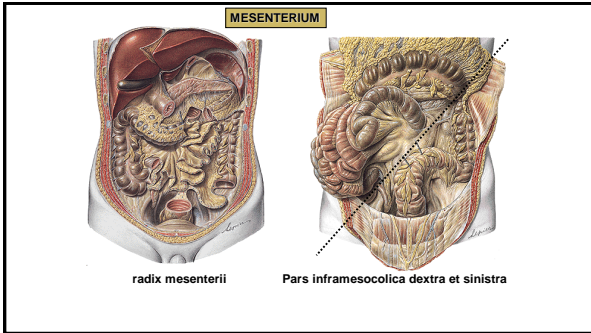
48



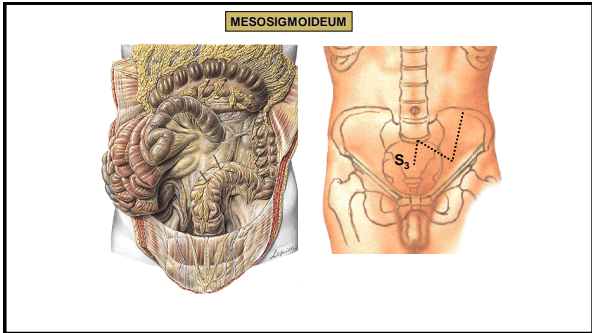
49



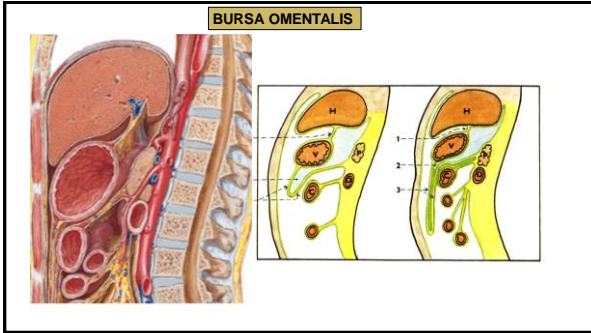
50



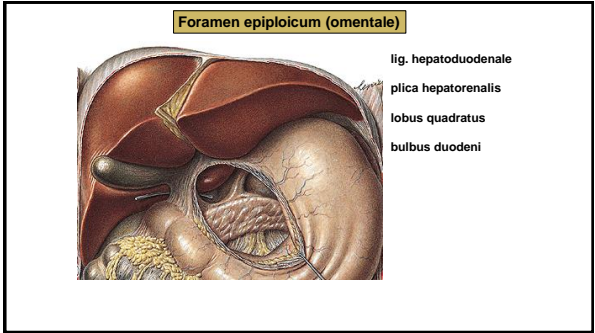
51



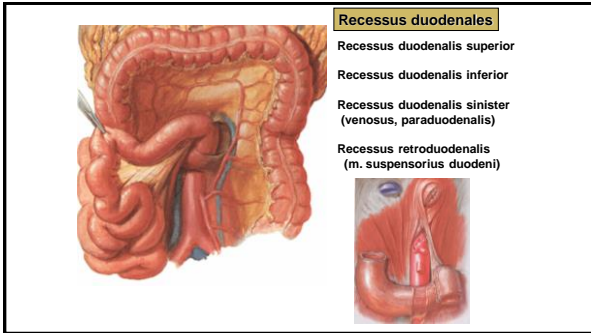
52



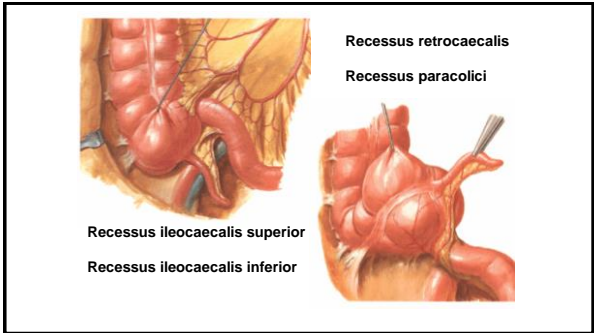
53



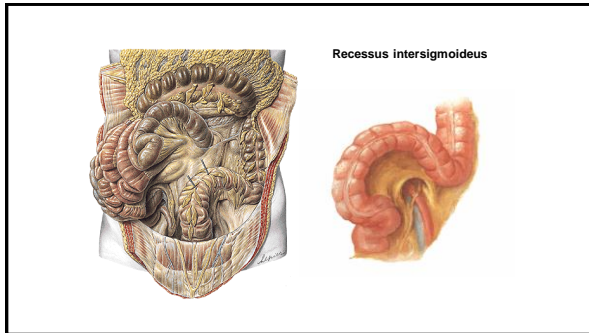
54



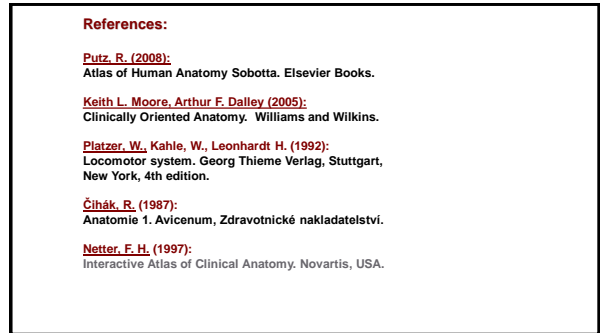
55



56



57



58