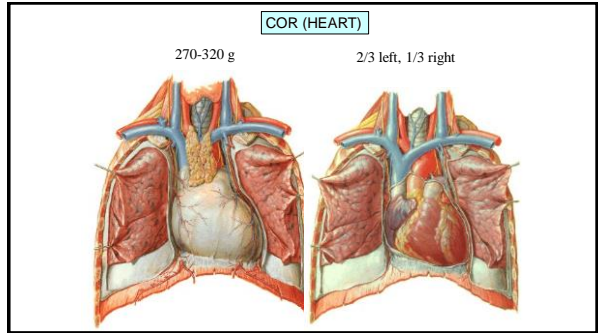
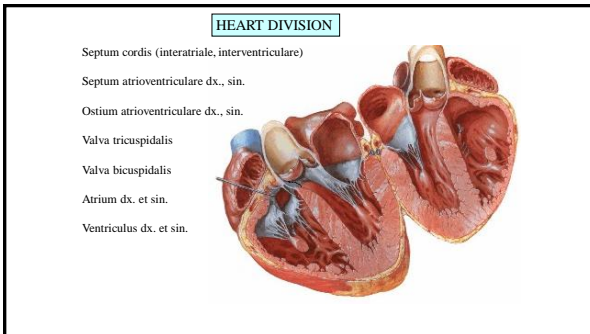


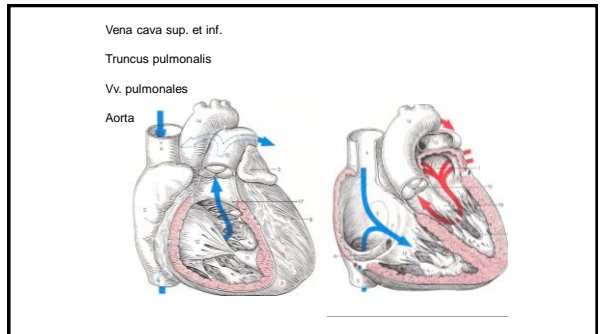
1



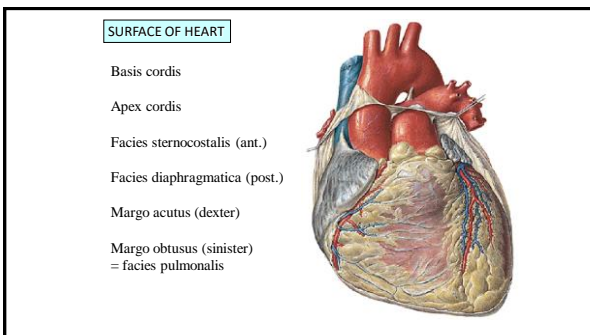
2



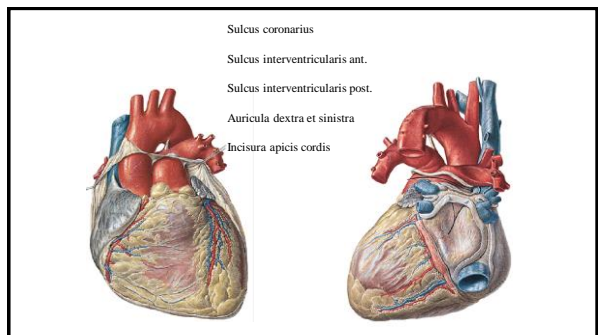
3



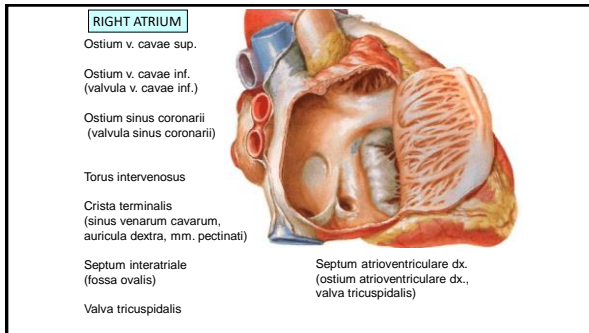
4



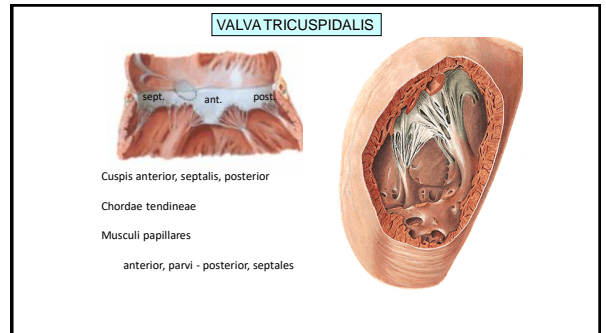
5



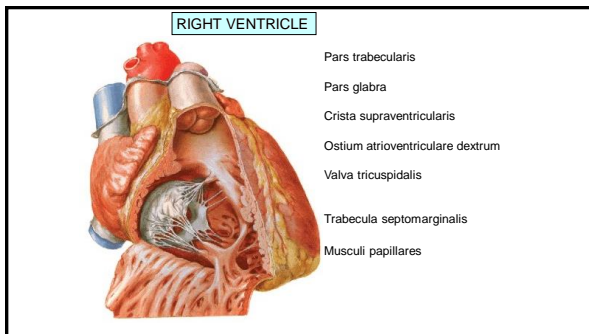
6



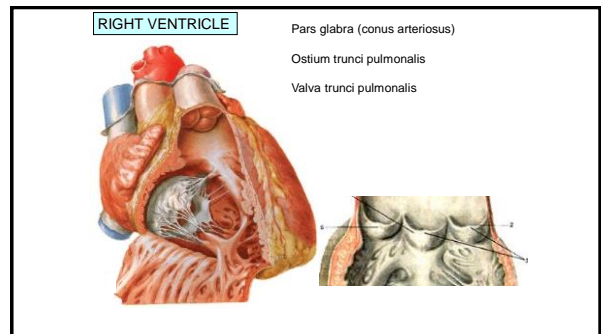
7



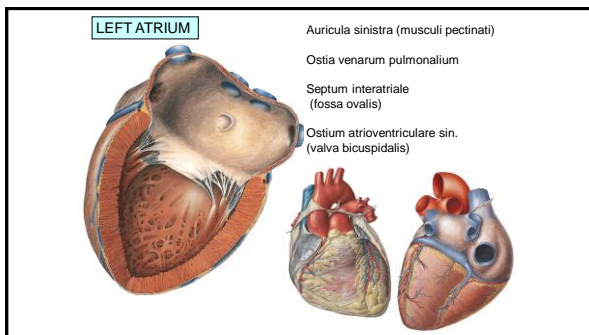
8



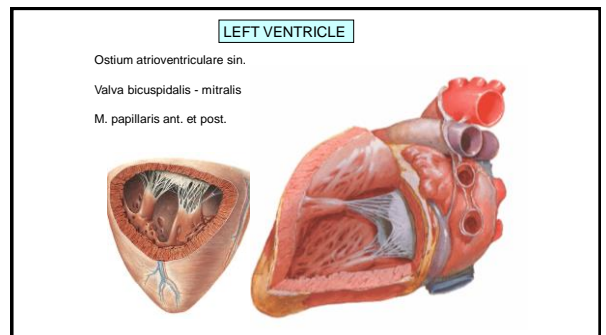
9



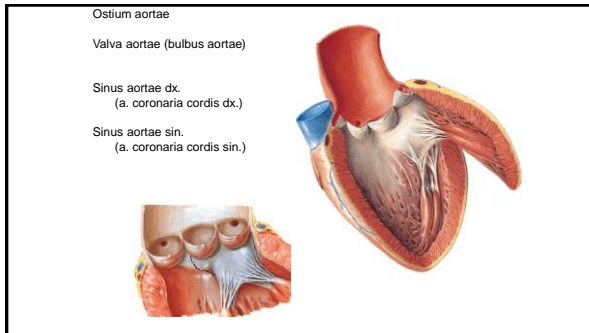
10



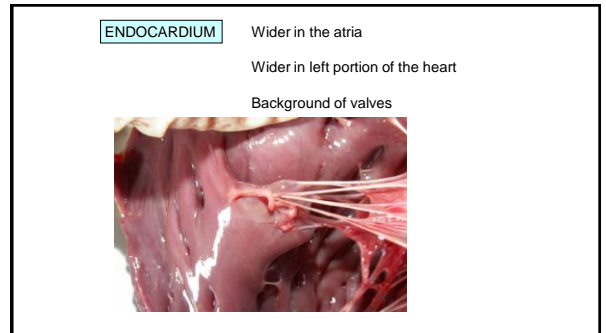
11



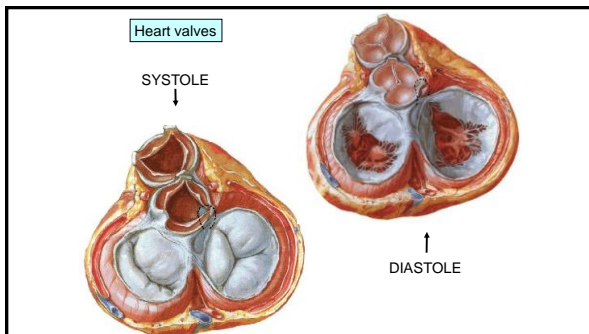
12



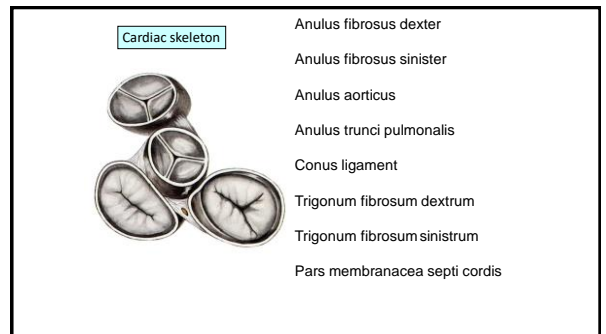
13



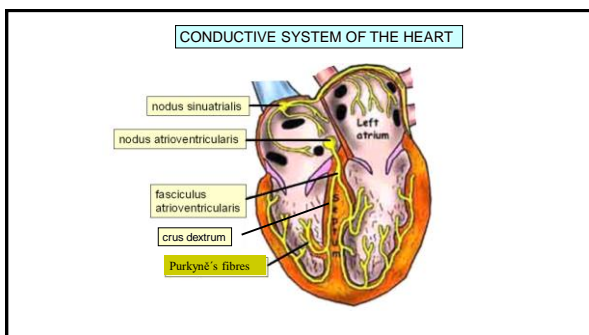
14



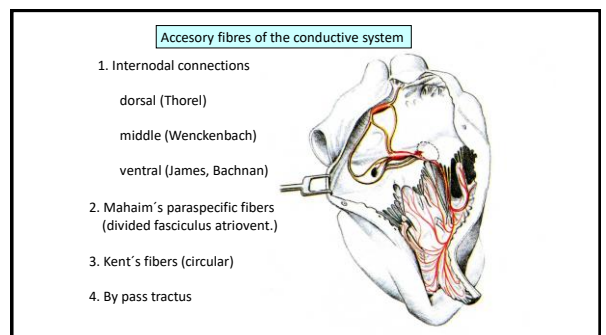
15



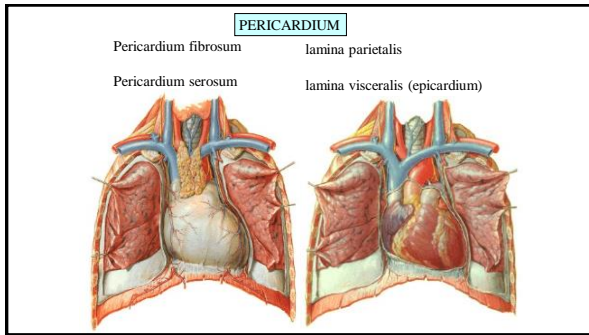
16



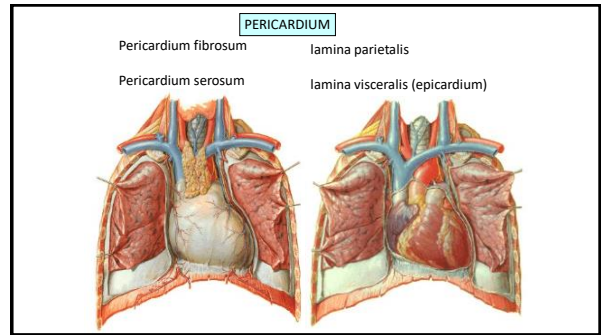
17



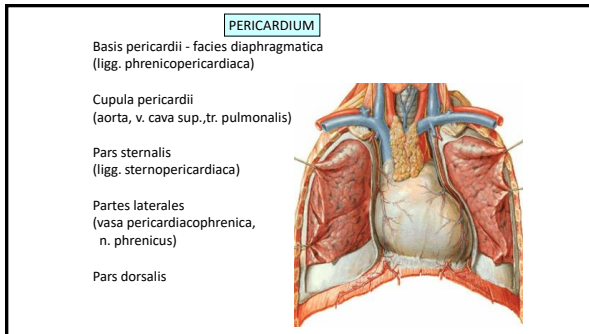
18



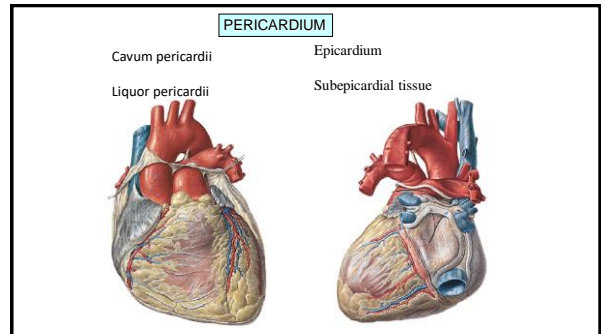
19



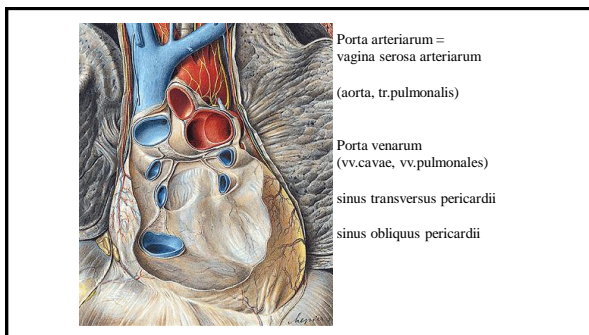
20



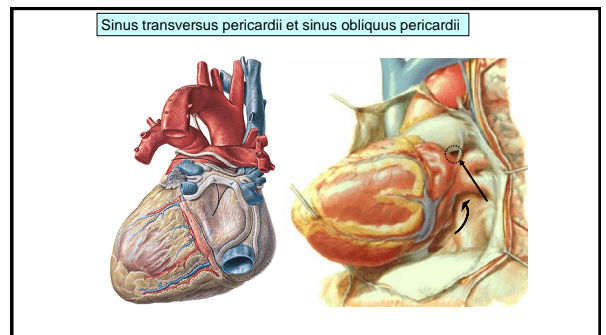
21



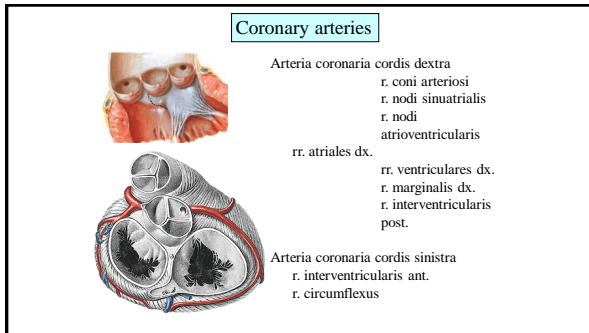
22



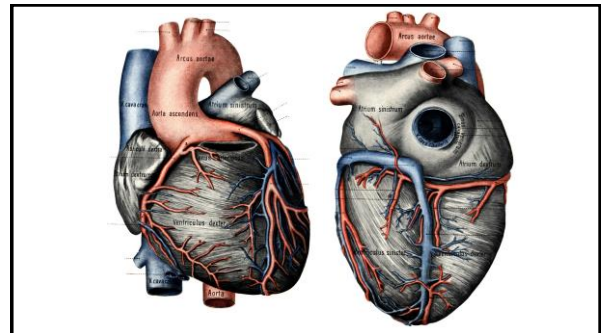
23



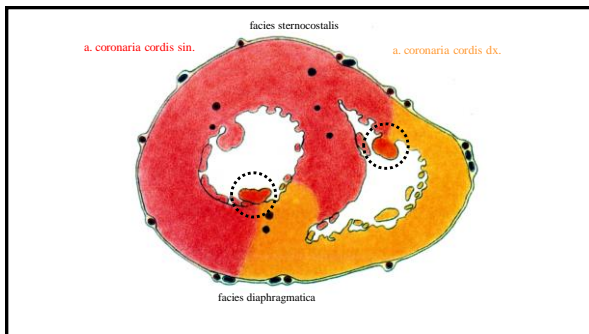
24



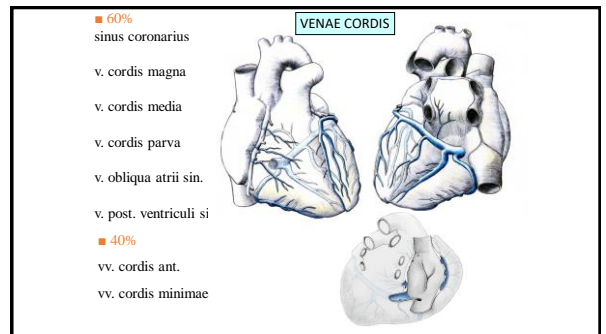
25



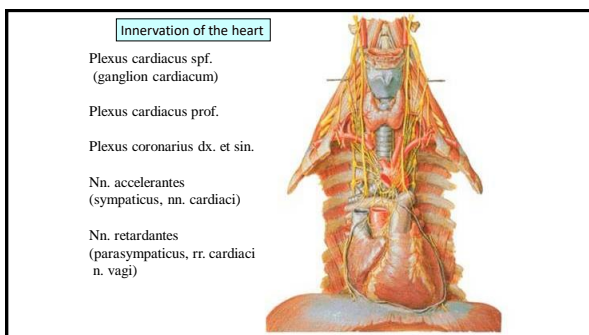
26



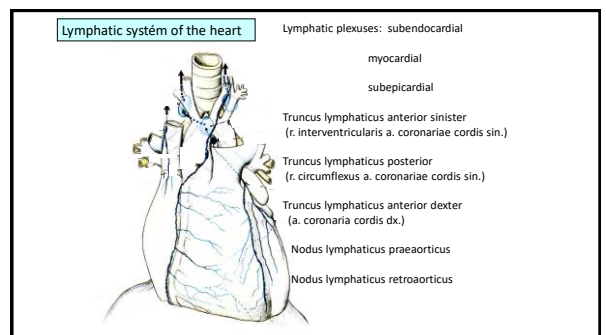
27



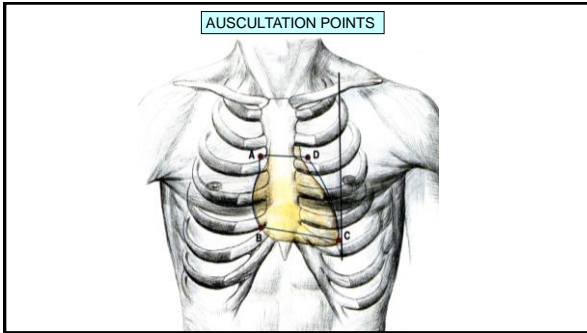
28



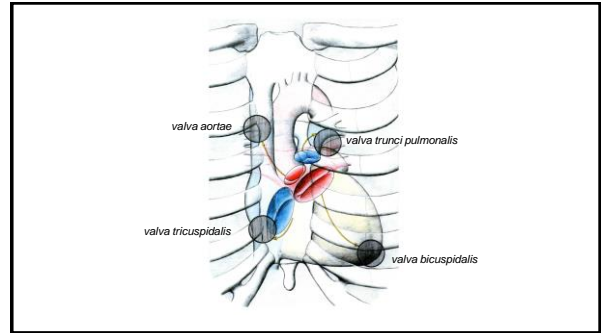
29



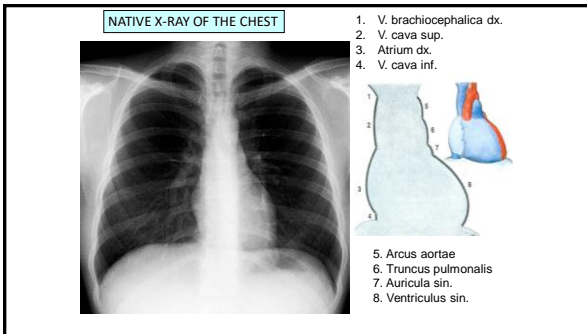
30



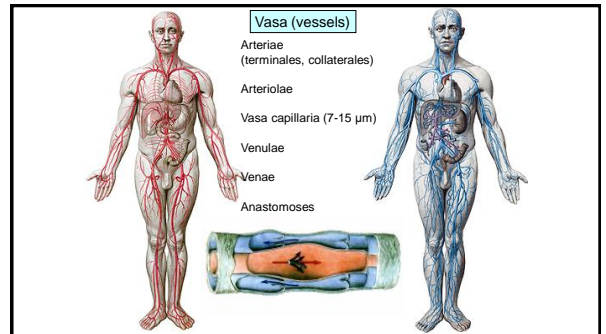
31



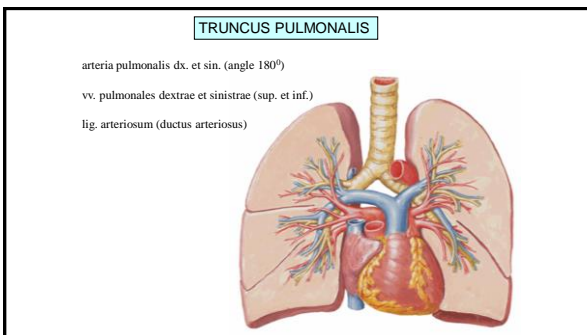
32



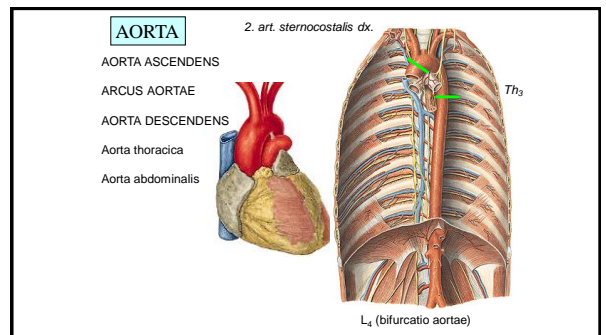
33



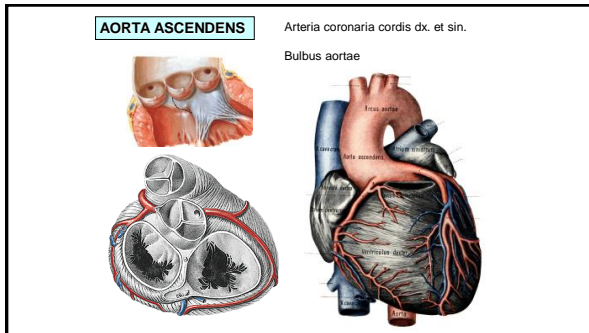
34



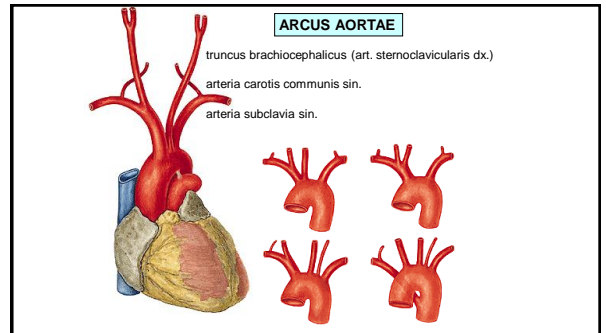
35



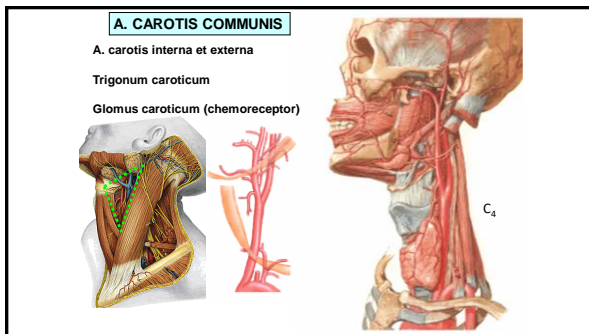
36



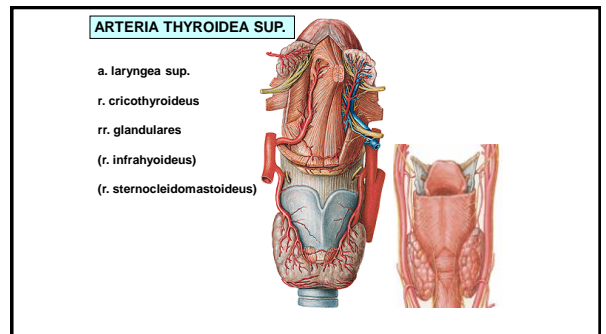
37



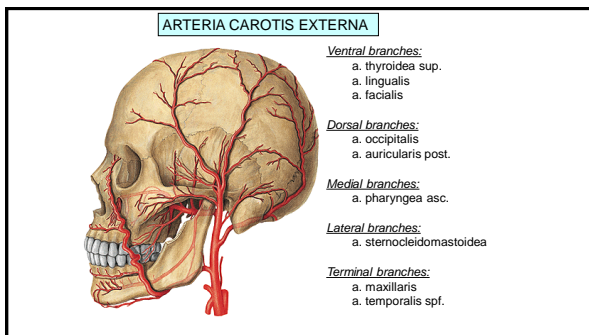
38



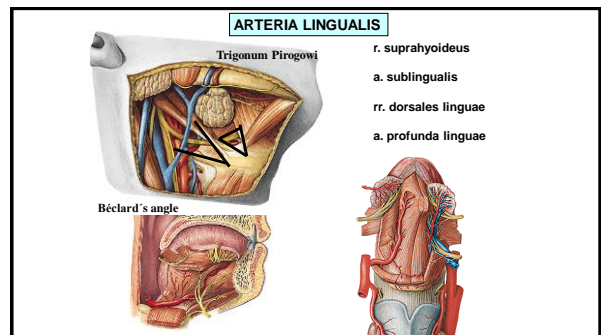
39



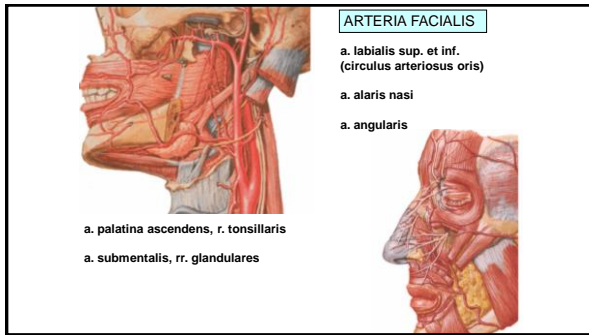
40



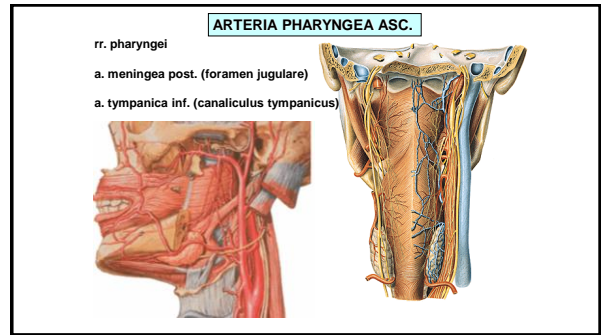
41



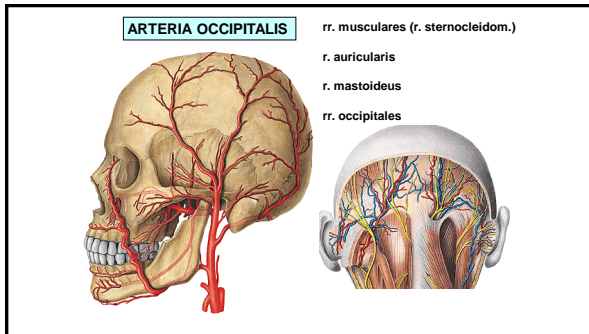
42



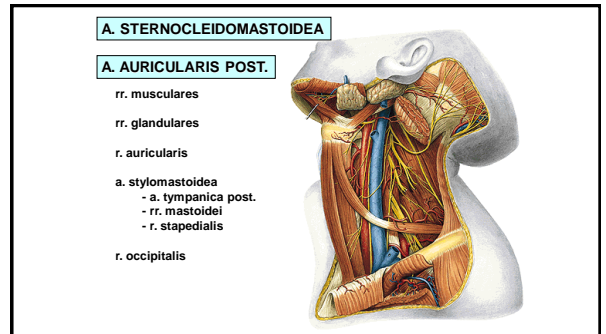
43



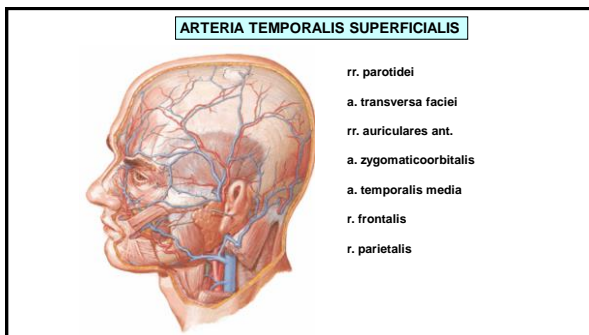
44



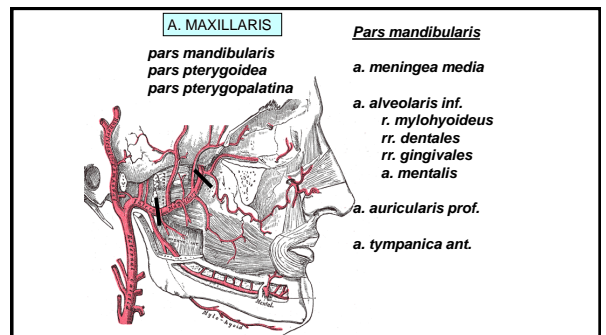
45



46

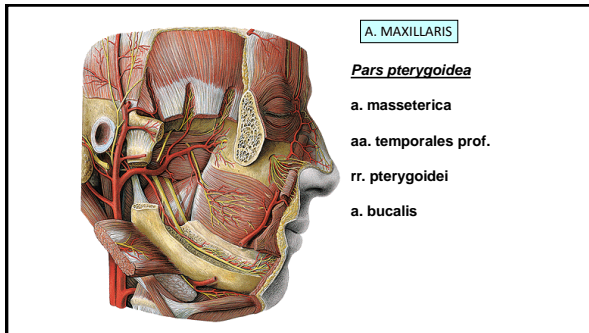


47

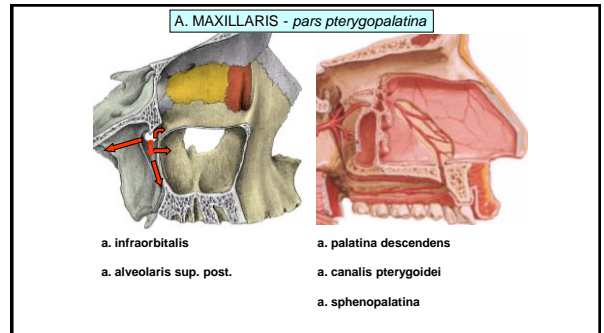


48

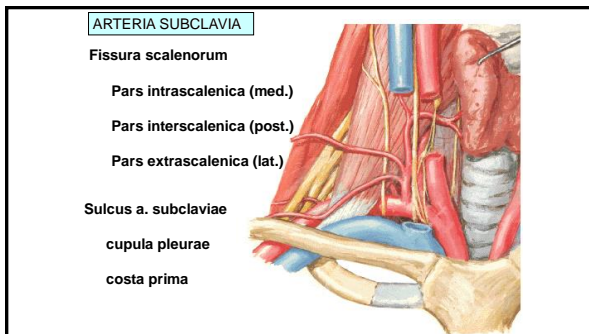




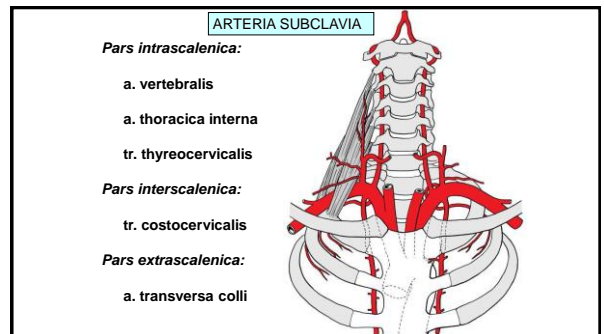
49



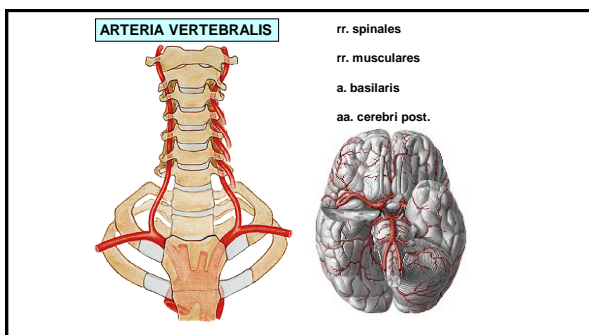
50



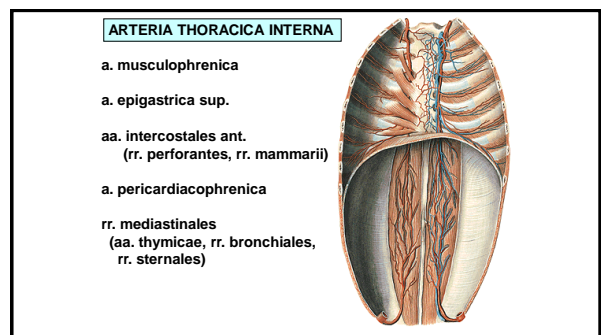
51



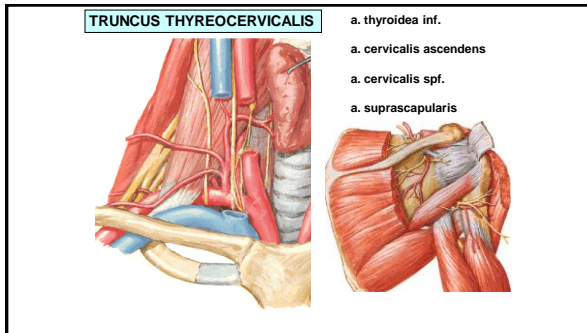
52



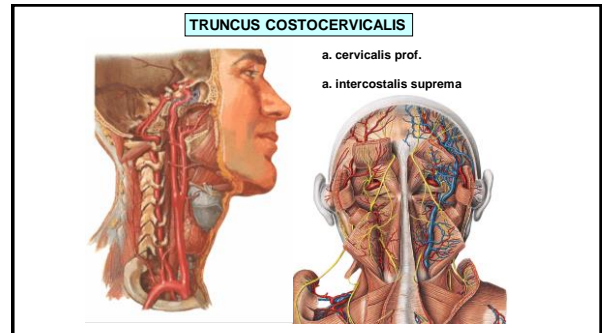
53



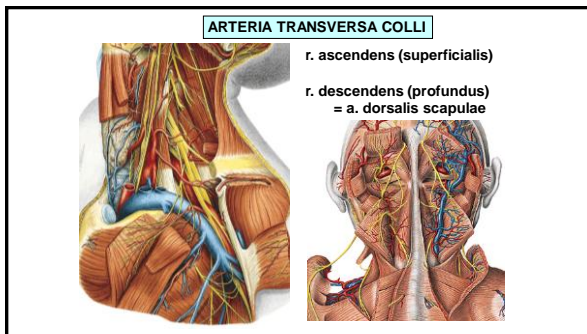
54



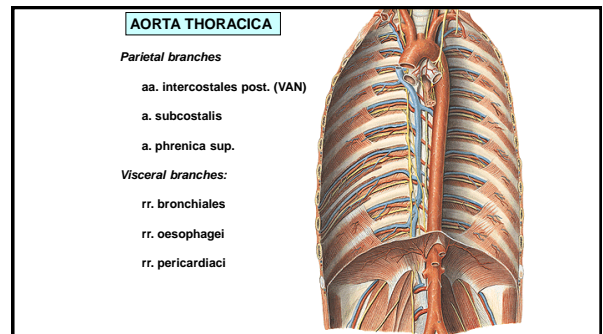
55



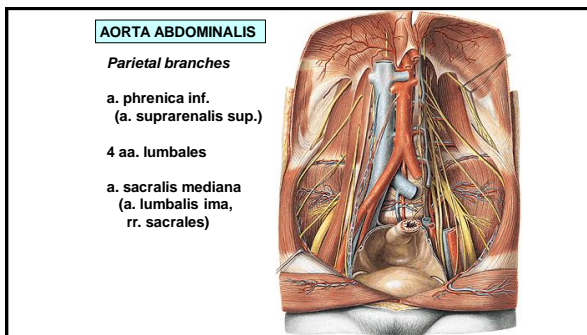
56



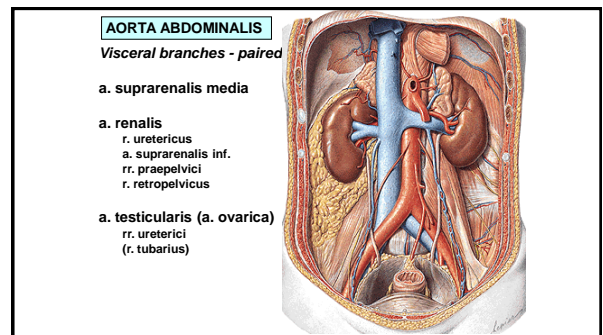
57



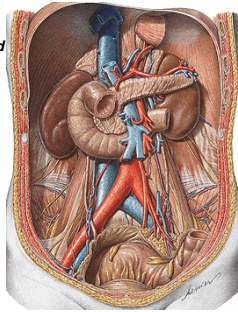
58



59



60

**AORTA ABDOMINALIS***Visceral branches – unpaired*truncus coeliacus Th<sub>12</sub>a. mesenterica sup. L<sub>1</sub>a. mesenterica inf. L<sub>3</sub>

61

**TRUNCUS COELIACUS**a. gastrica sin.a. hepatica communis

a. hepatica propria

a. gastrica dx.

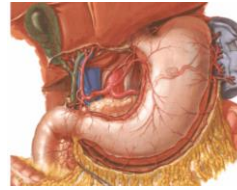
r. dexter (a. cystica)

r. sinister

a. gastroduodenalis

a. gastropiploica dx.

a. pancreaticoduodenalis. sup.

a. lienalis

62

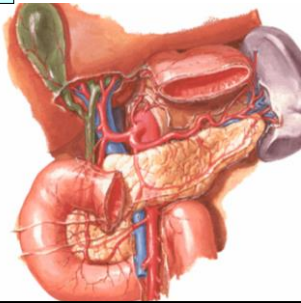
**ARTERIA LIENALIS**

rr. pancreatici

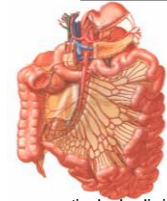
a. gastropiploica sin.

aa. gastricae breves

rr. lienales



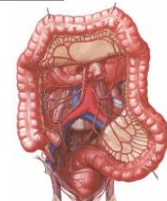
63

**ARTERIA MESENTERICA SUP.**

a. pancreaticoduodenalis inf.

aa. jejunales et ilei (10-18)

a. ileocolica



a. colica dx.

a. colica media

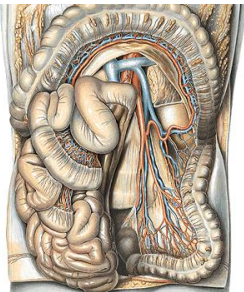
64

**ARTERIA MESENTERICA INFERIOR**

a. colica sinistra

aa. sigmoideae

a. rectalis sup.

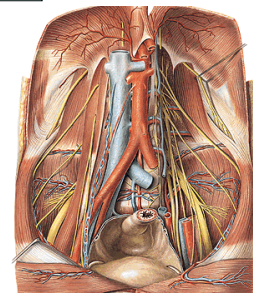
anastomosis magna  
(Halleri)

65

**ARTERIA ILIACA COMMUNIS**

A. iliaca externa

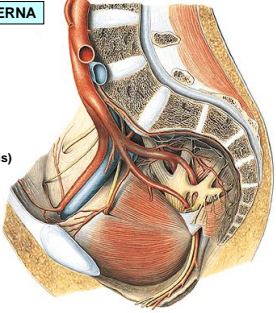
A. iliaca interna

(bifurcatio aortae L<sub>4</sub>)

66

**ARTERIA ILIACA INTERNA**  
*Parietal branches*

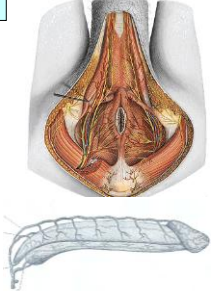
- a. iliolumbalis
- a. sacralis lat.
- a. obturatoria  
(r. pubicus - corona mortis)
- a. glutea sup.
- a. glutea inf.
- a. pudenda interna



67

**ARTERIA PUDENDA INTERNA**


- a. rectalis inf.
- a. perinealis – rr. scrotales post.  
(rr. labiales post.)
- a. penis (a. clitoridis)
  - a. profunda penis (clitoridis)
  - a. dorsalis penis (clitoridis)



68

**ARTERIA ILIACA INTERNA**  
*Visceral branches*

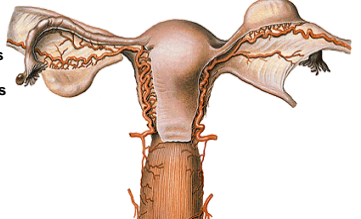
- aa. vesicales sup.  
(a. umbilicalis)
- a. vesicalis inf.
- a. rectalis media
- ♂ a. ductus deferentis
- ♀ a. uterina



69

**ARTERIA UTERINA**

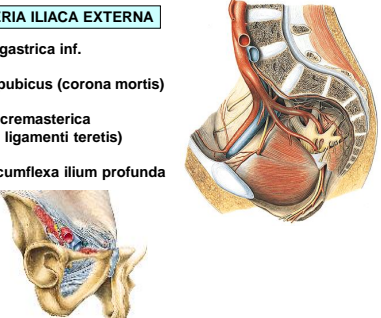
- r. uretericus
- a. vaginalis ant. et post.
- rr. uterini
- r. tubarius
- r. ovaricus



70

**ARTERIA ILIACA EXTERNA**


- a. epigastrica inf.
- r. pubicus (corona mortis)
- a. cremasterica  
(a. ligamenti teretis)
- a. circumflexa ilium profunda



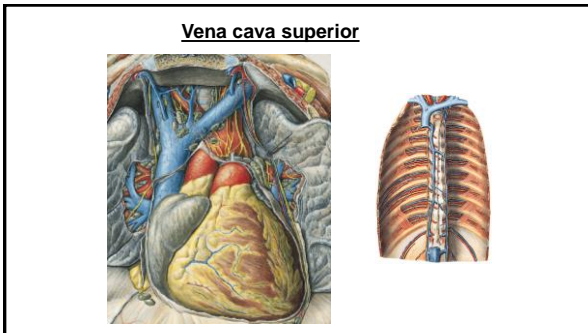
71

v. cava superior

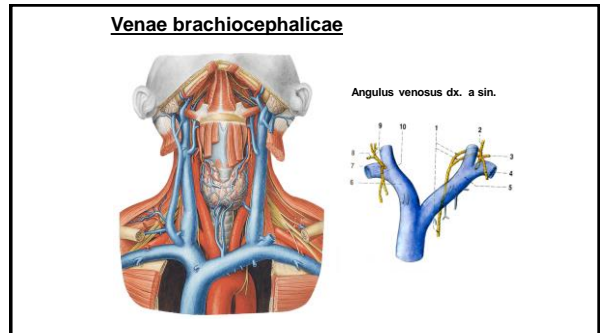
v. cava inferior



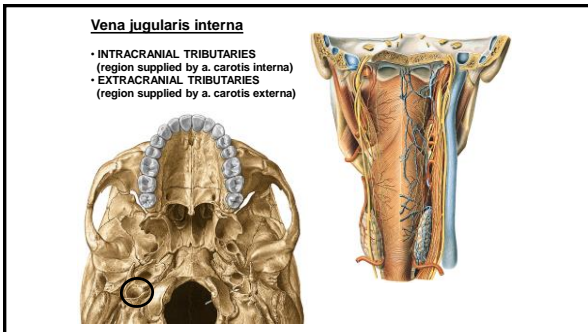
72



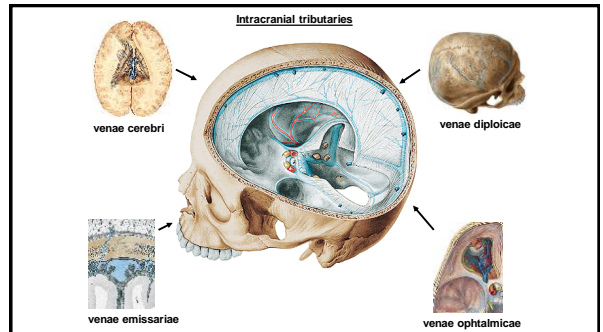
73



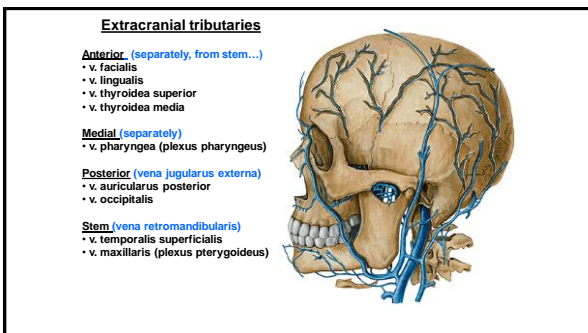
74



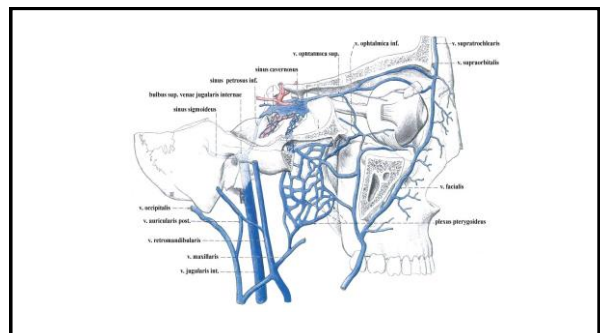
75



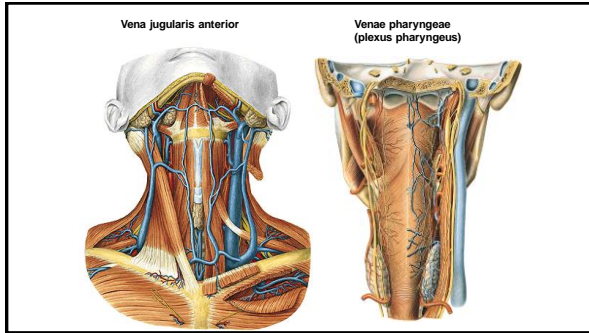
76



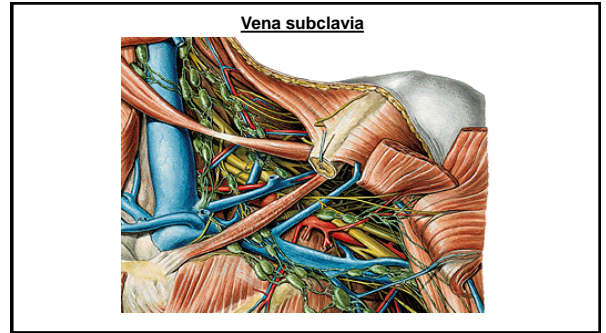
77



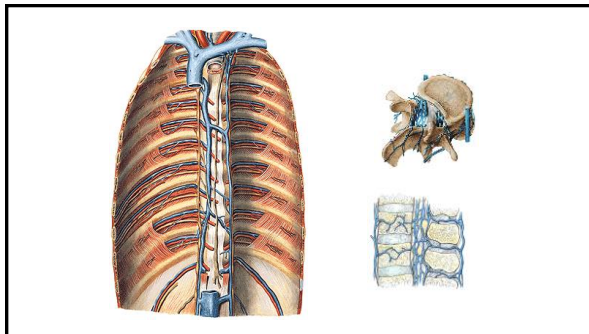
78



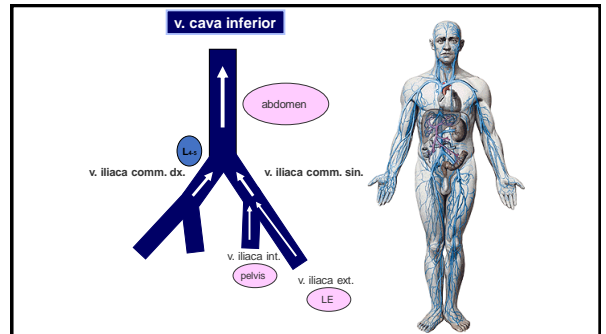
79



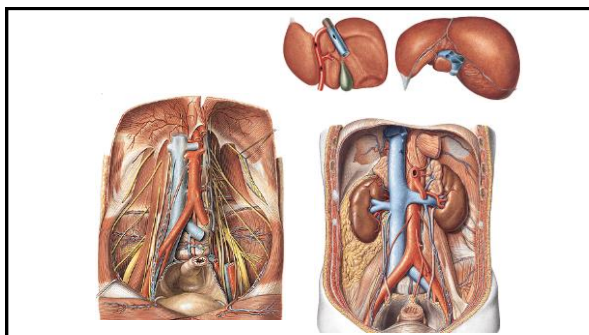
80



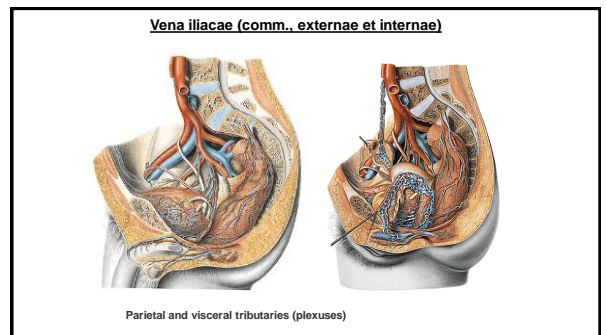
81



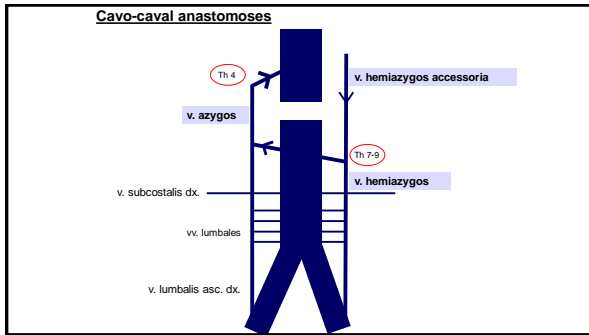
82



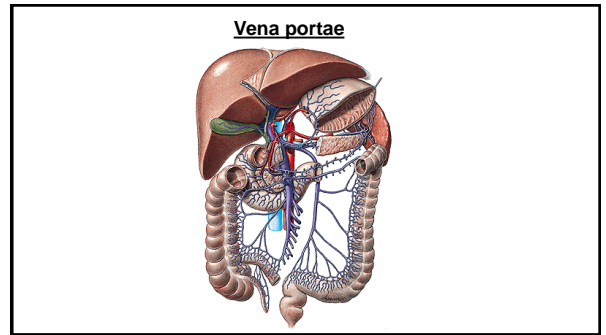
83



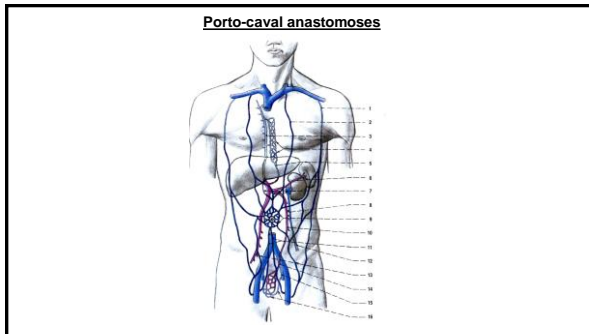
84



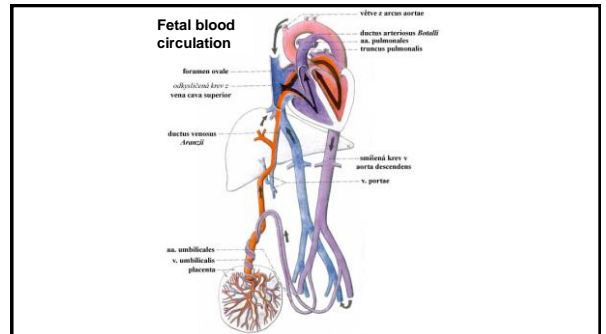
85



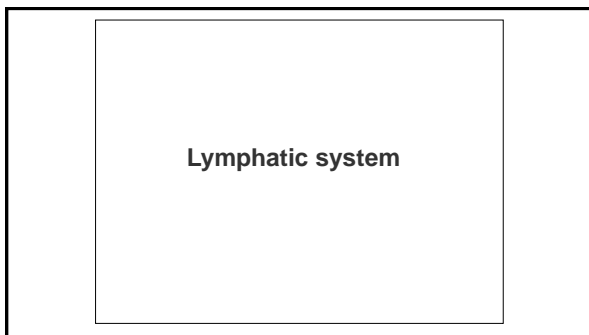
86



87



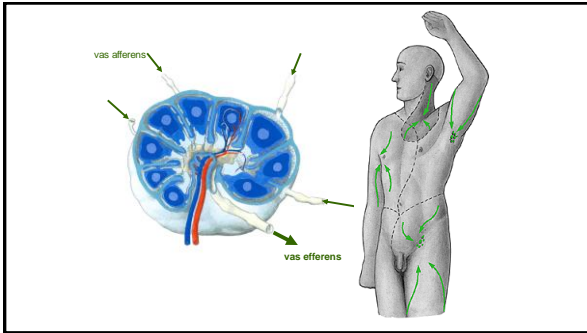
88



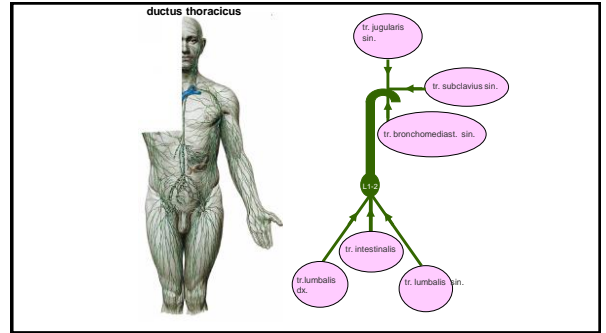
89

- lymph 1,5-2l/day
- lymphatic vessels (vasa lymphatica)
  - capillaries (vasa lymphocapillaria)
  - Lymphatic net (rete lymphocapillare)
  - collector vessels (collectores lymphatici)
  - trunks (trunci lymphatici)
- lymphatic nodes (nodi lymphatici)
- lymphatic organs
  - tonsillae
  - spleen
  - thymus

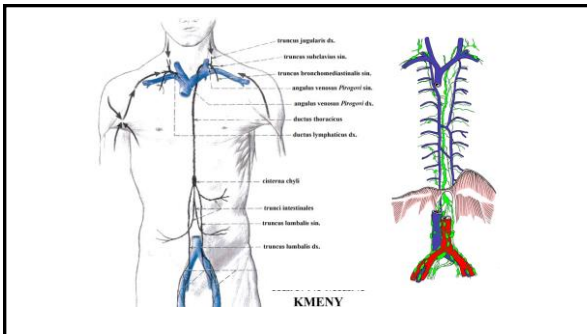
90



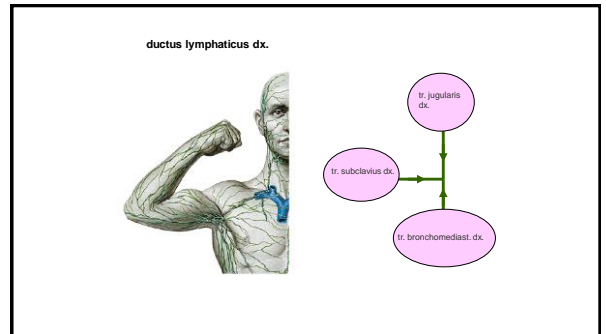
91



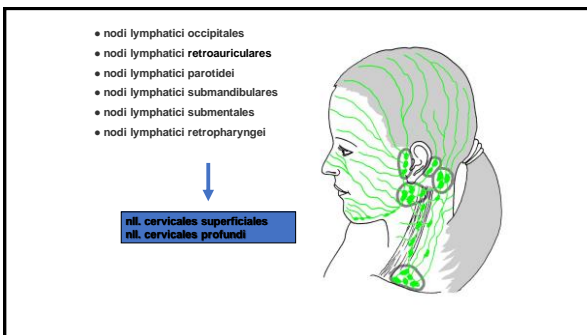
92



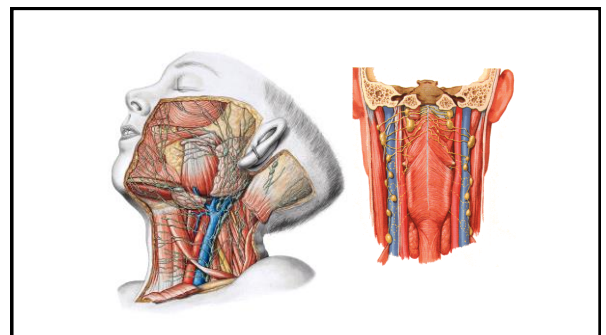
93



94



95



96



**Nodi lymphatici cervicales**

- **superficiales**  
alongside vena jugularis externa
- **profundi**  
alongside vena jugularis interna  
alongside nervus accessorius  
alongside arteria transversa coli (supraclavicular)
- **anteriores**  
superficial - alongside vena jugularis anterior  
deep - around larynx, trachea, thyroid gland

97

**Lymphatic vessels of the upper extremity**

- **superficial collectors**  
anterior  
lateral  
medial
- **deep collectors**  
n.l. cubitales prof.  
n.l. axillares

98

**n.l. axillares**

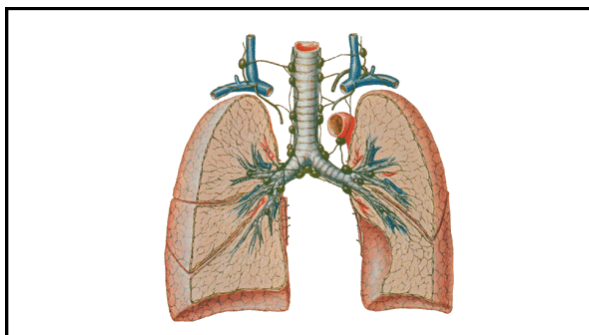
- n.l. laterales (brachiales)
- n.l. subscapulares
- n.l. pectorales (n.l. interpectorales)
- n.l. centrales
- n.l. apicales

↓  
**truncus subclavius**

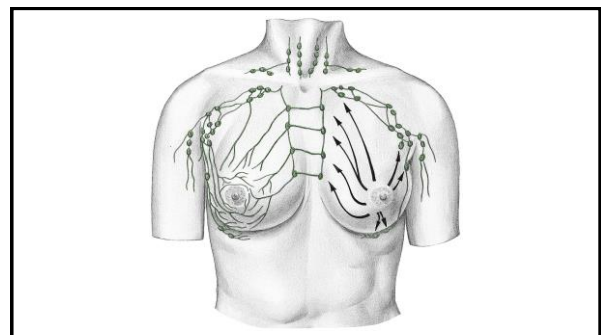
99

**Lymphatic vessels of the thorax**

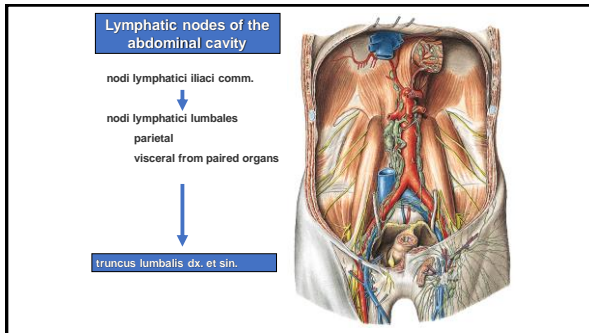
100



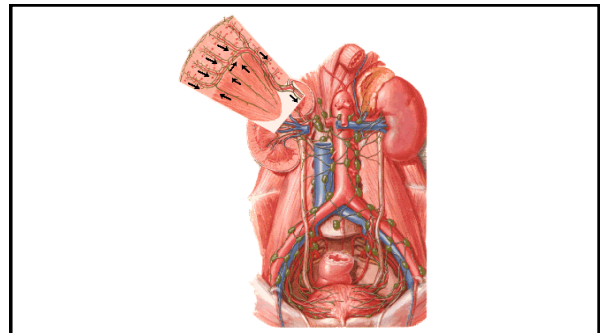
101



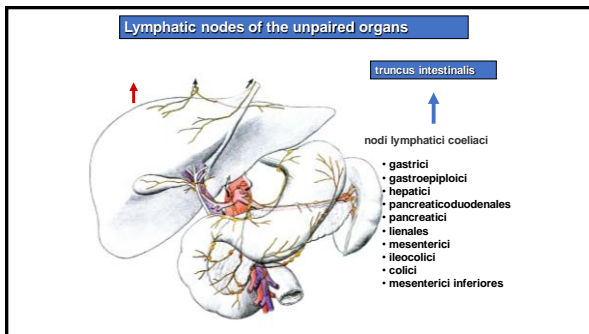
102



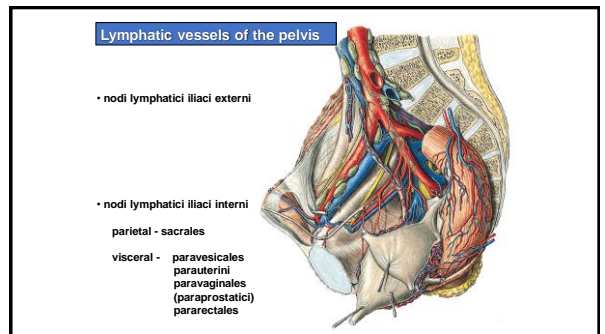
103



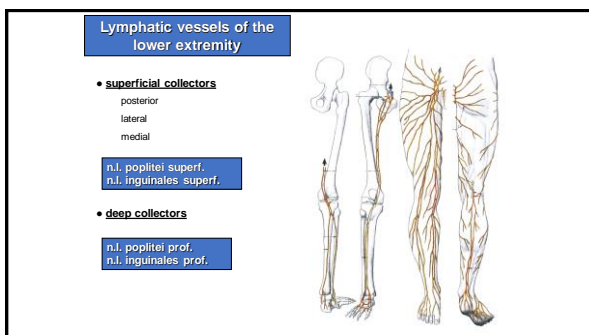
104



105



106



107