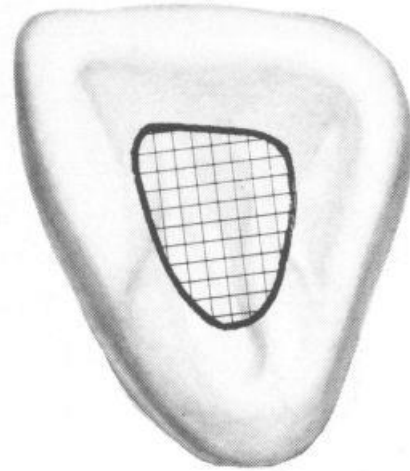
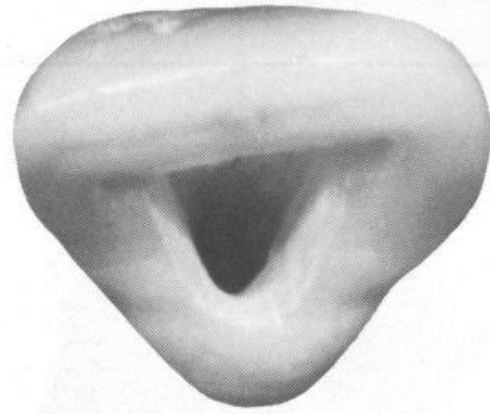
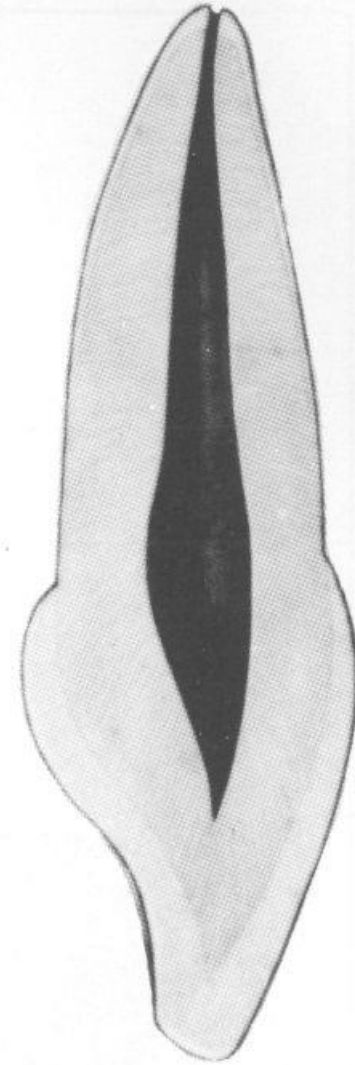


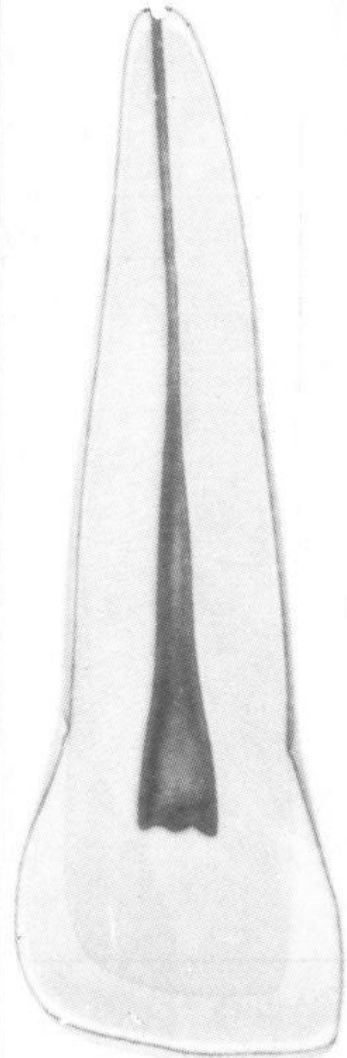
Labial



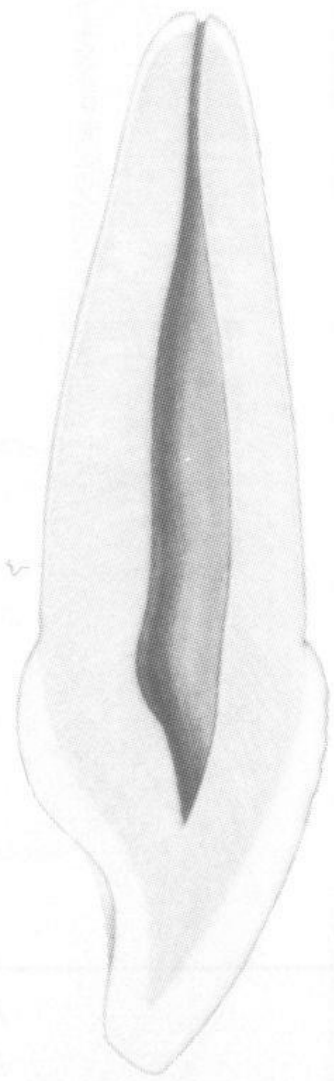
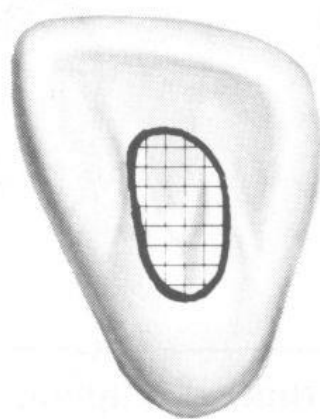
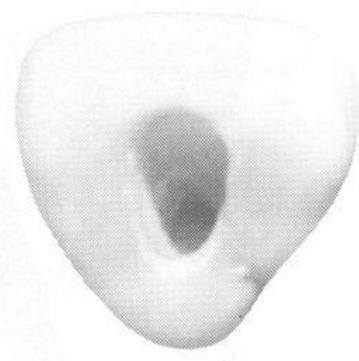
Lingual



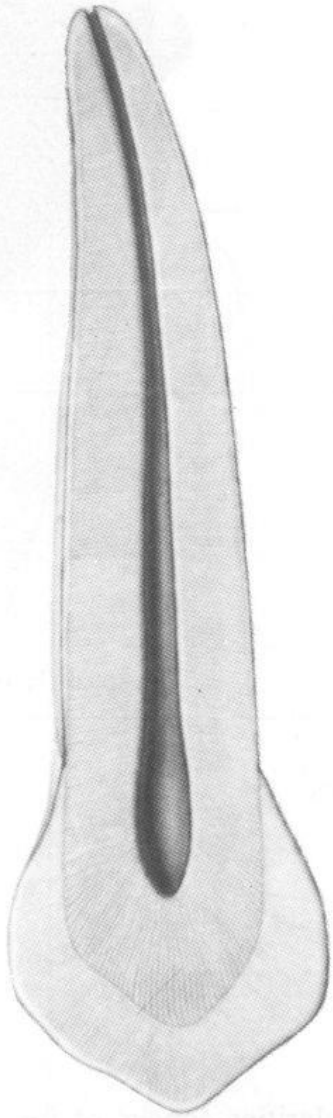
Distal



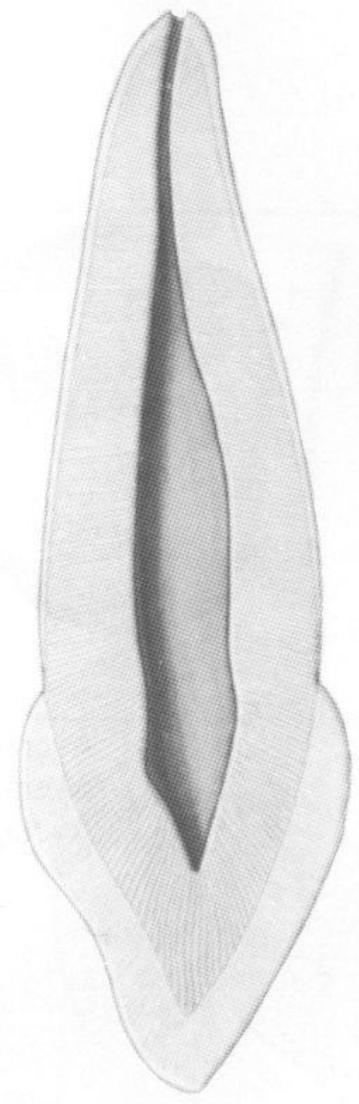
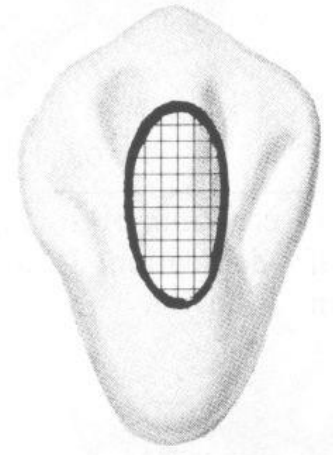
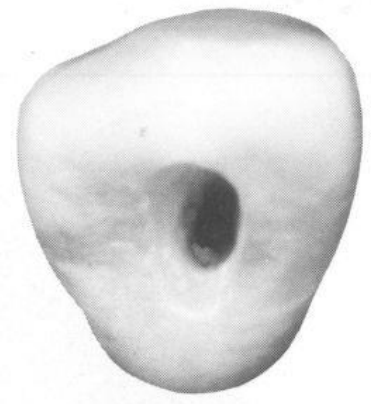
Labial



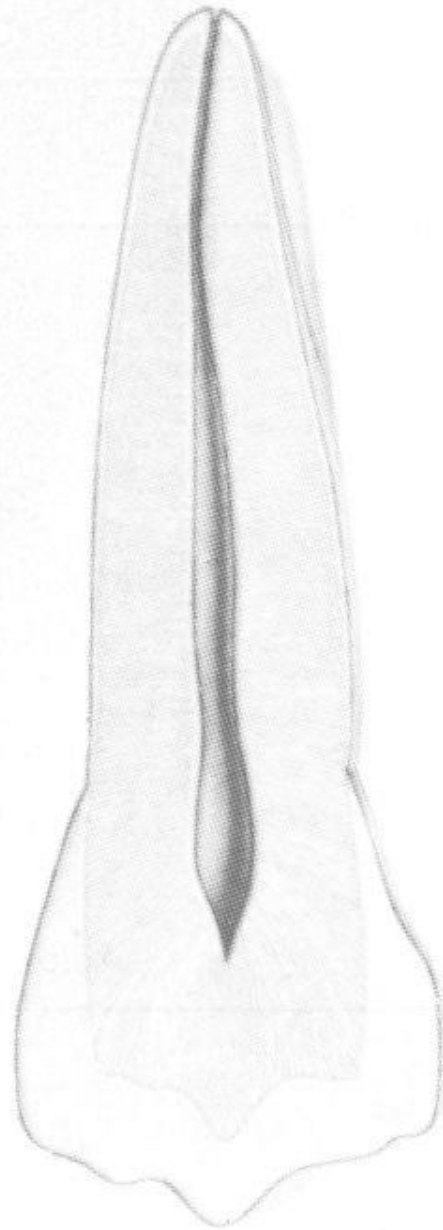
Distal



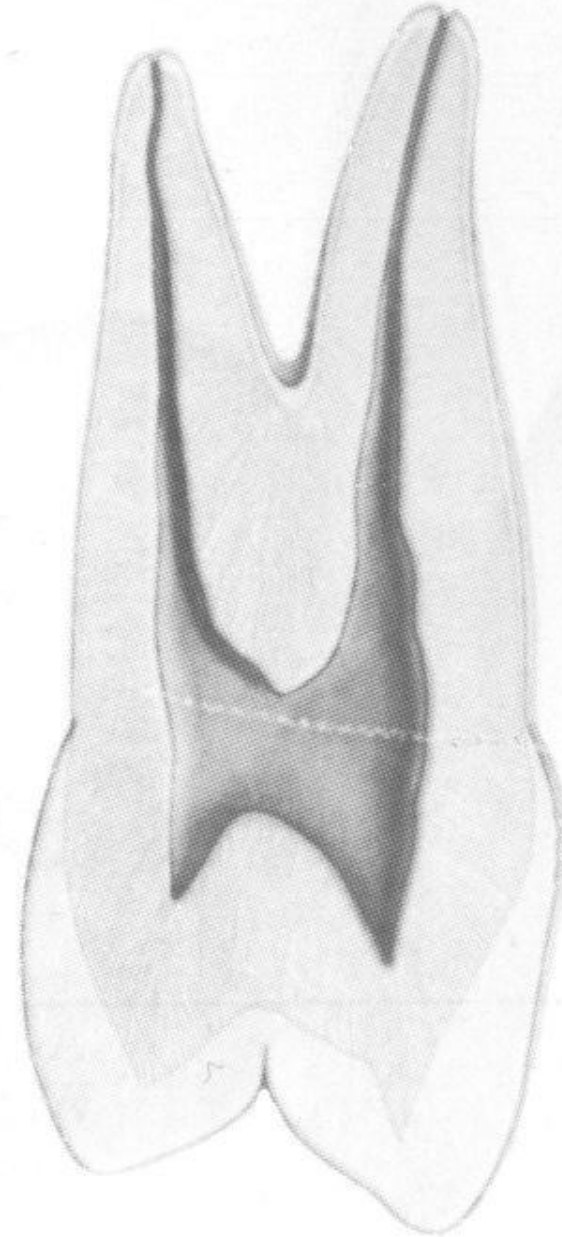
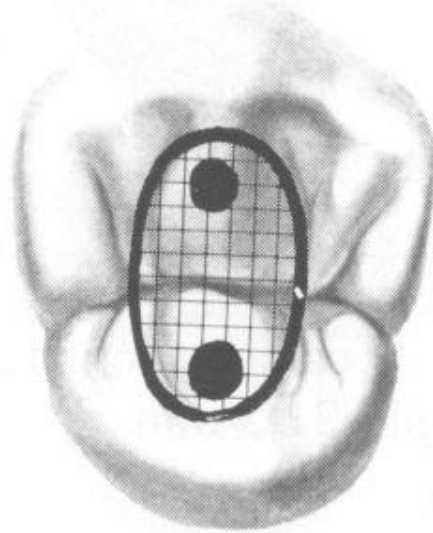
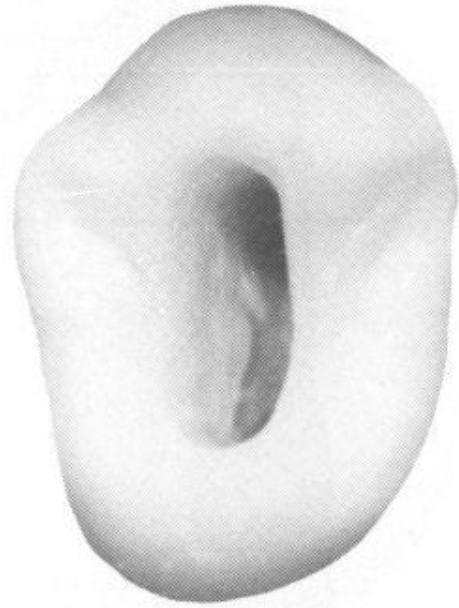
Labial



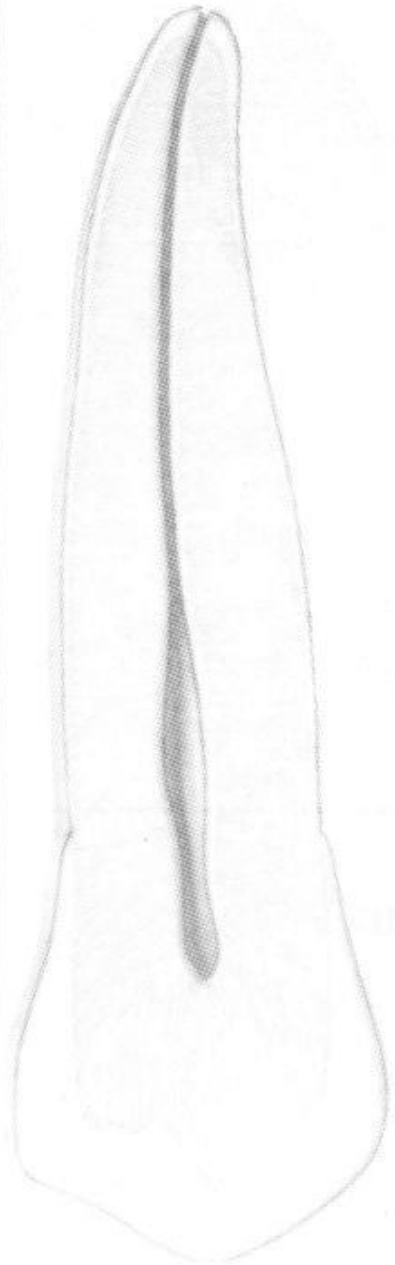
Distal



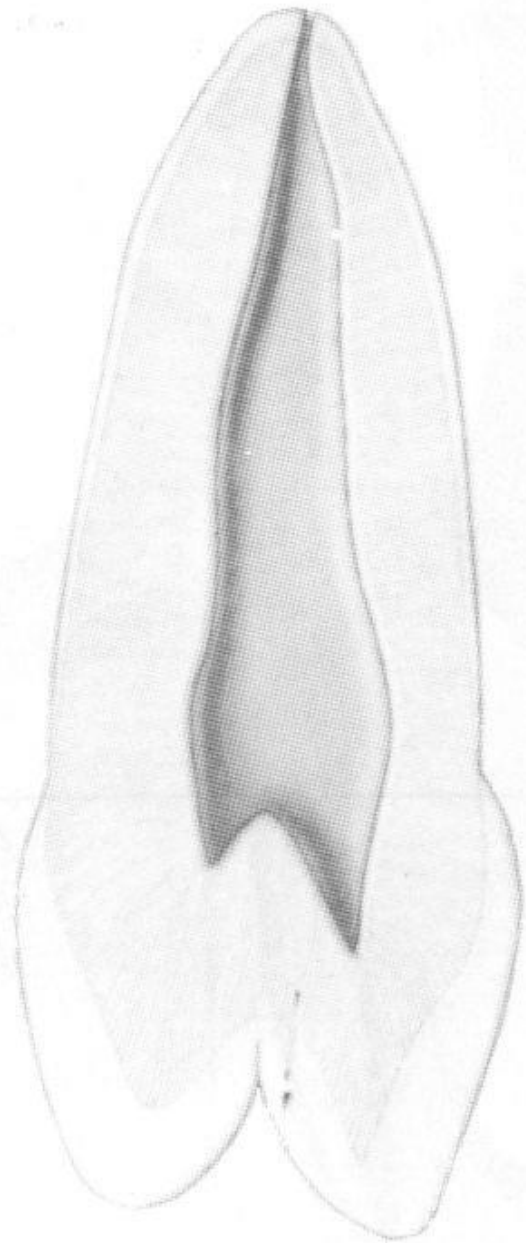
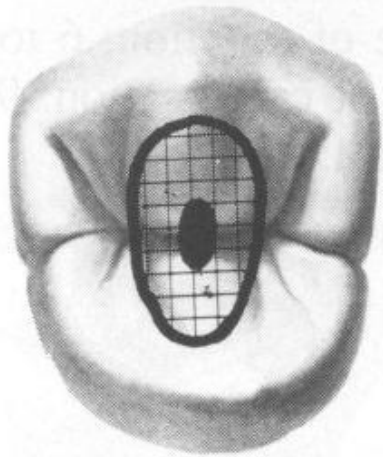
Buccal



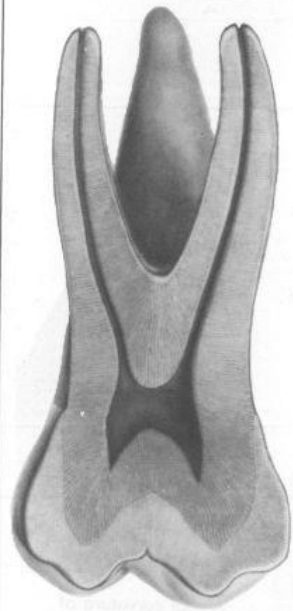
Distal



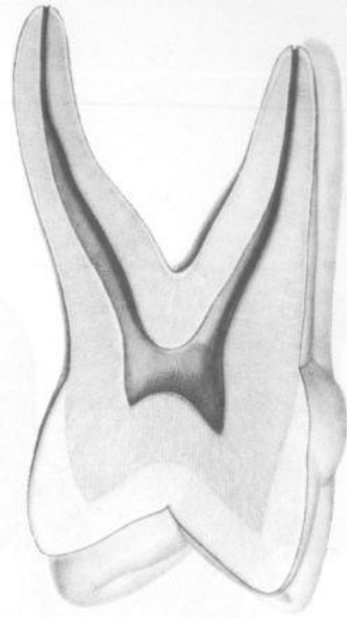
Buccal



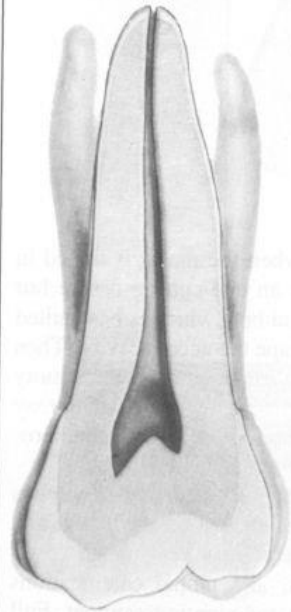
Distal



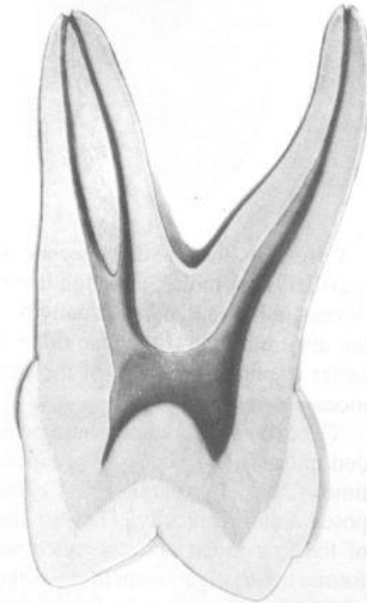
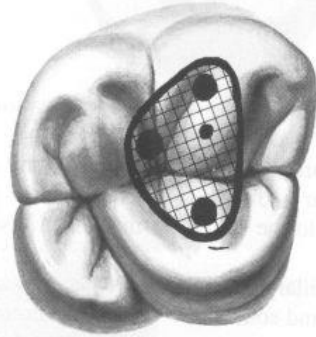
Buccal



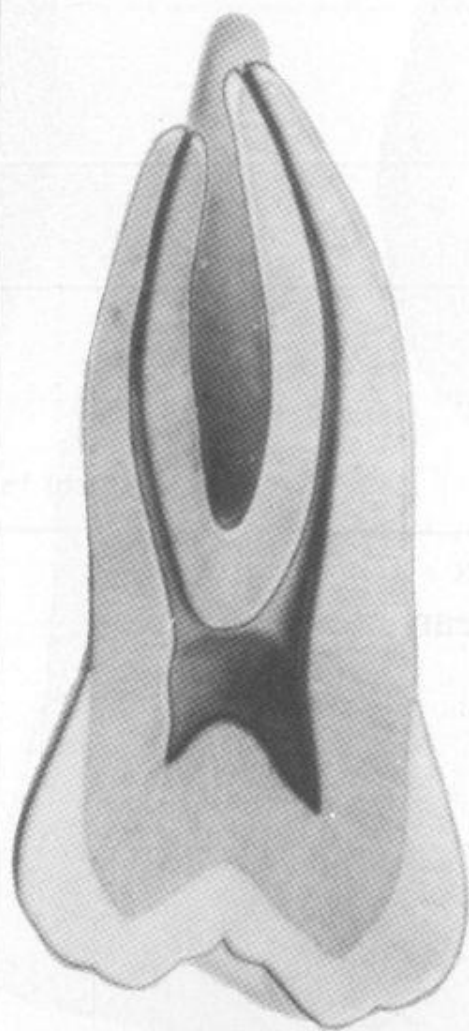
Distal



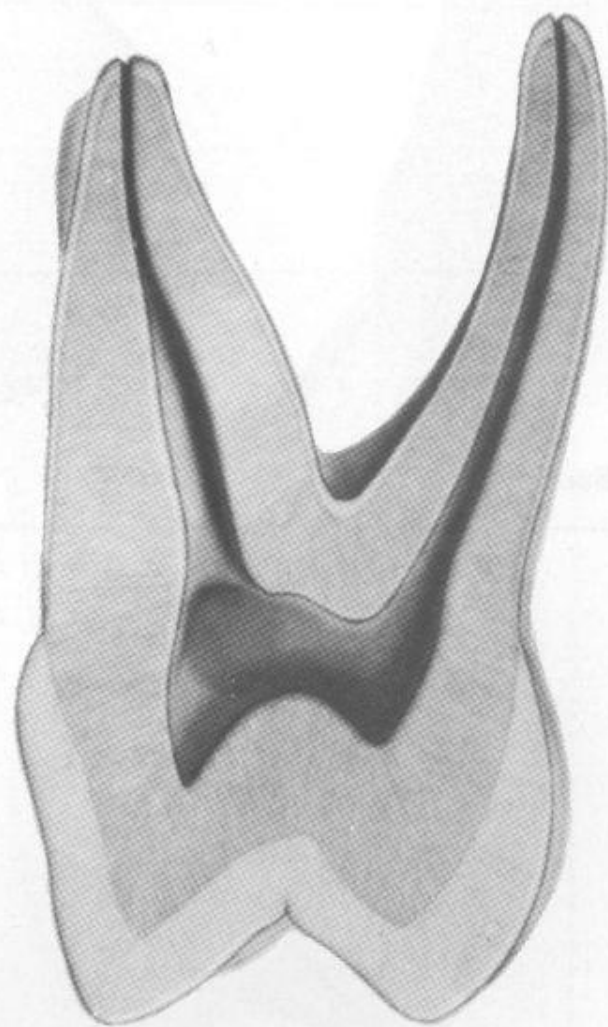
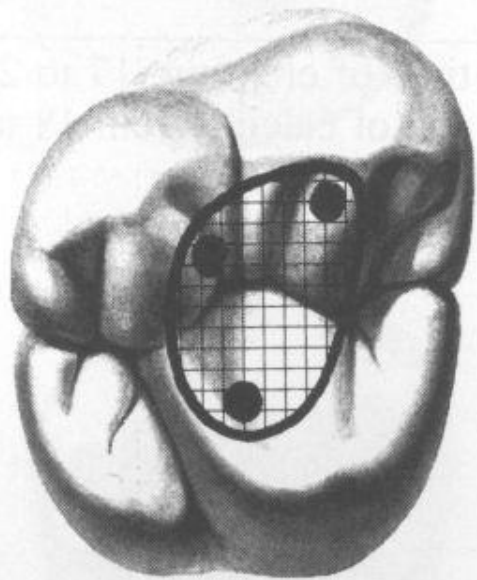
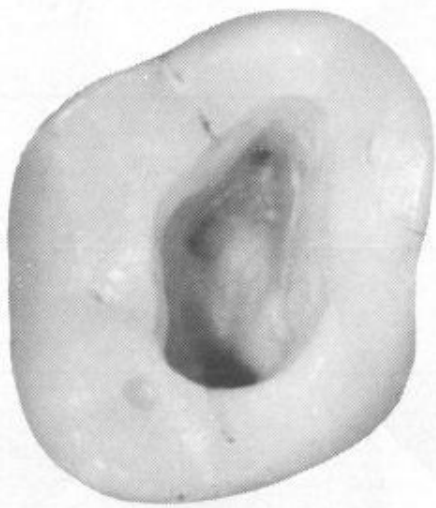
Palatal



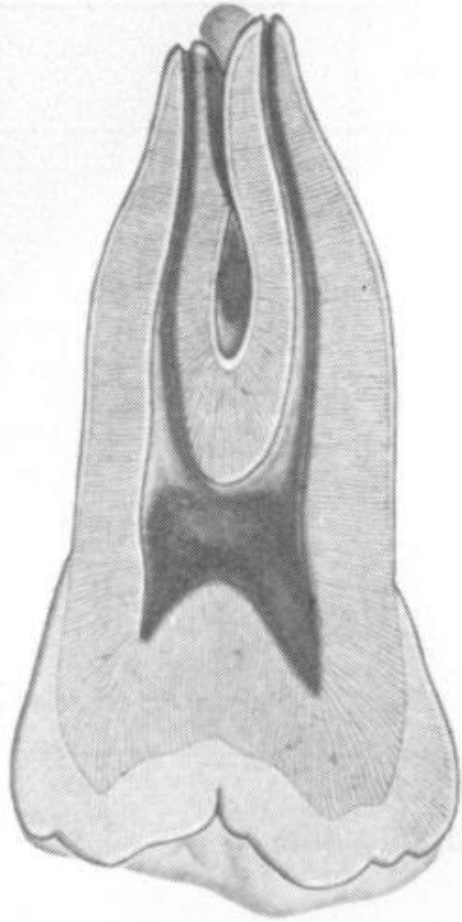
Mesial



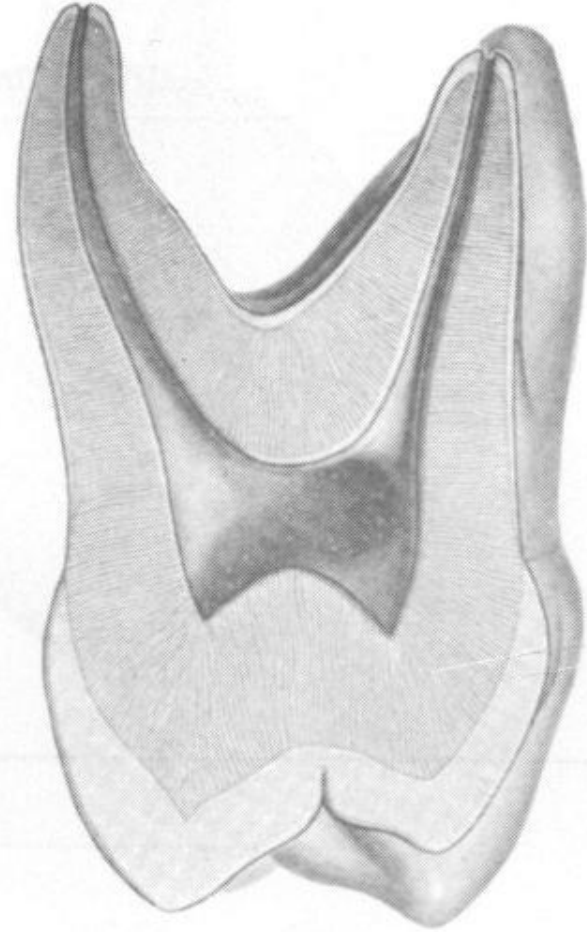
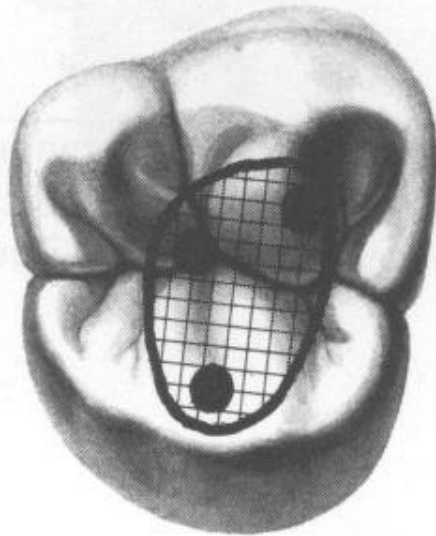
Buccal



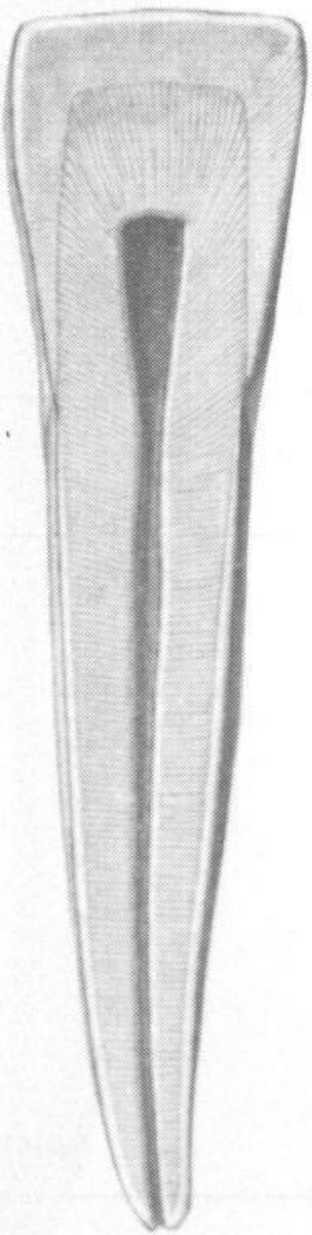
Mesial



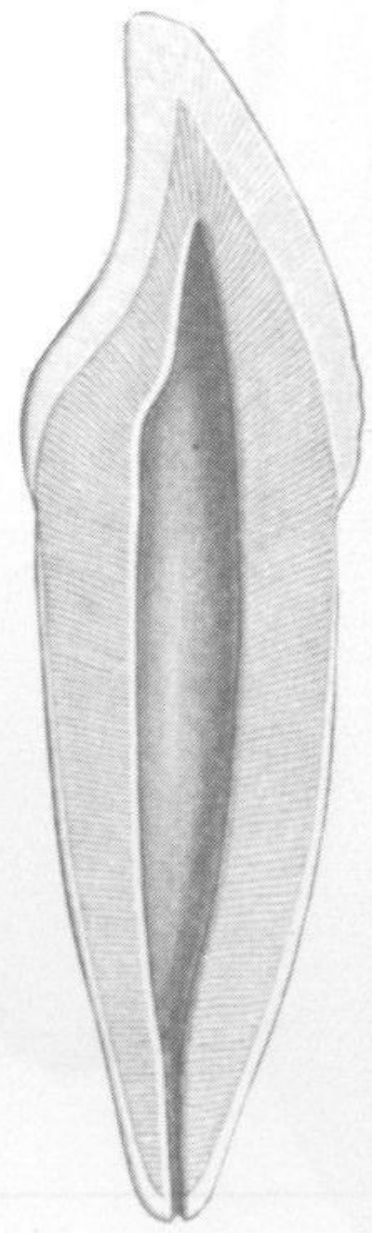
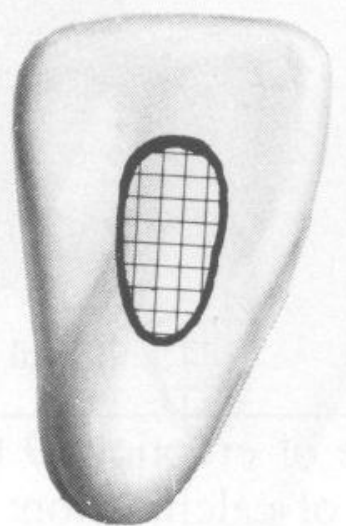
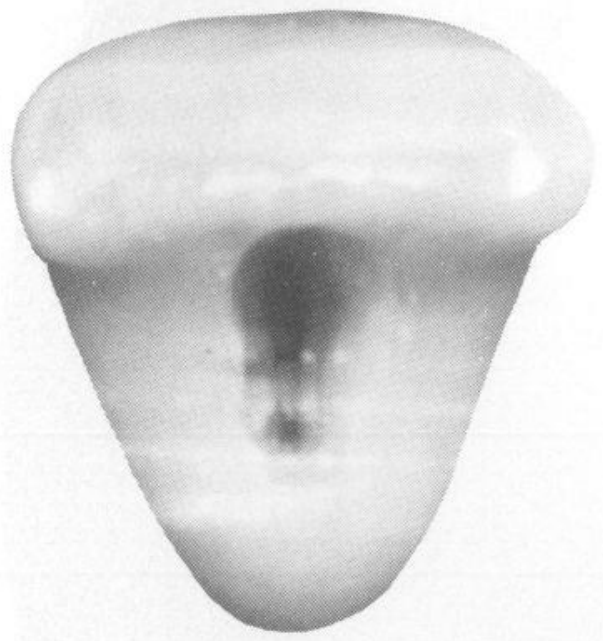
Buccal



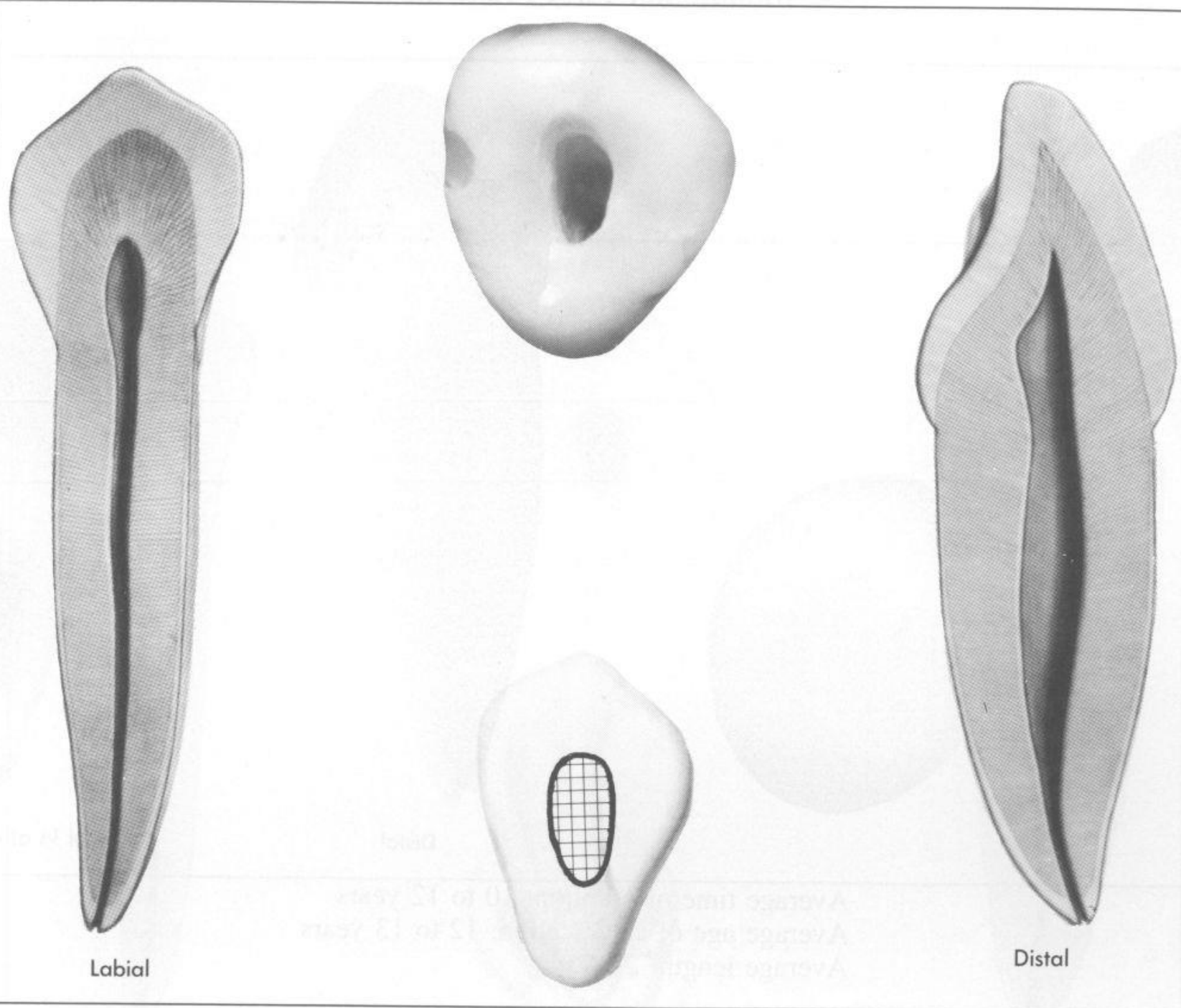
Distal



Labial

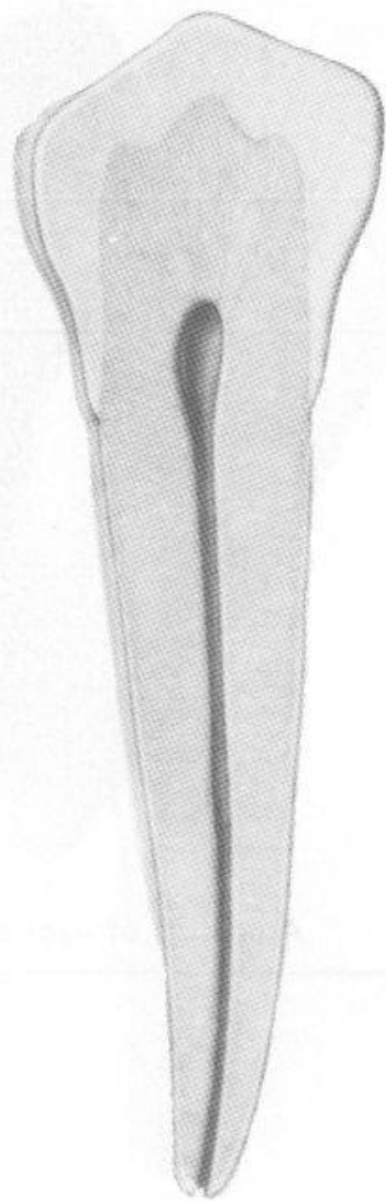


Distal

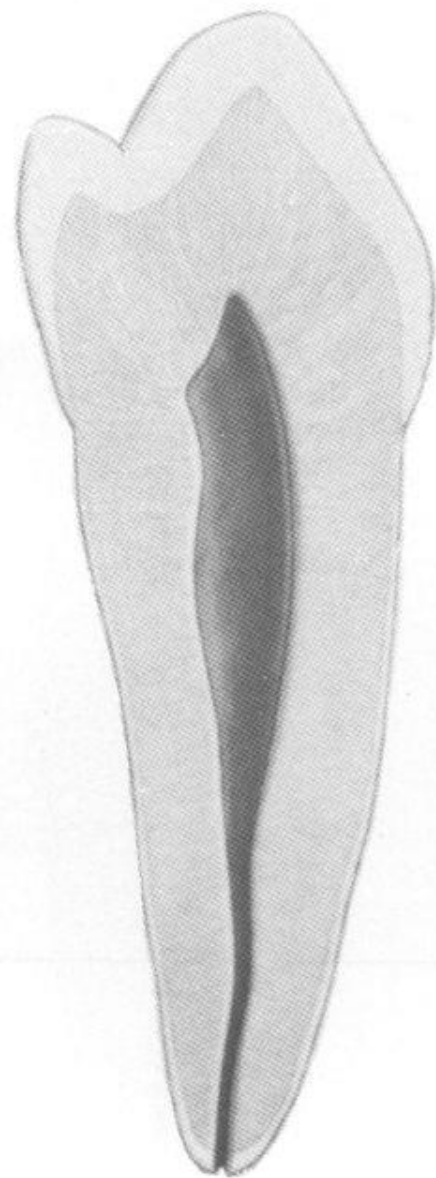
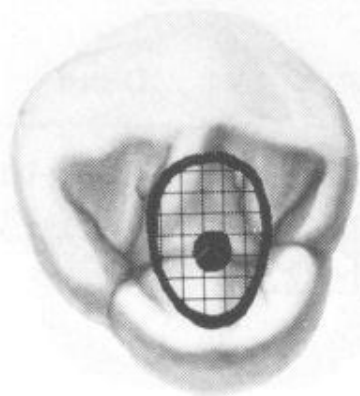


Labial

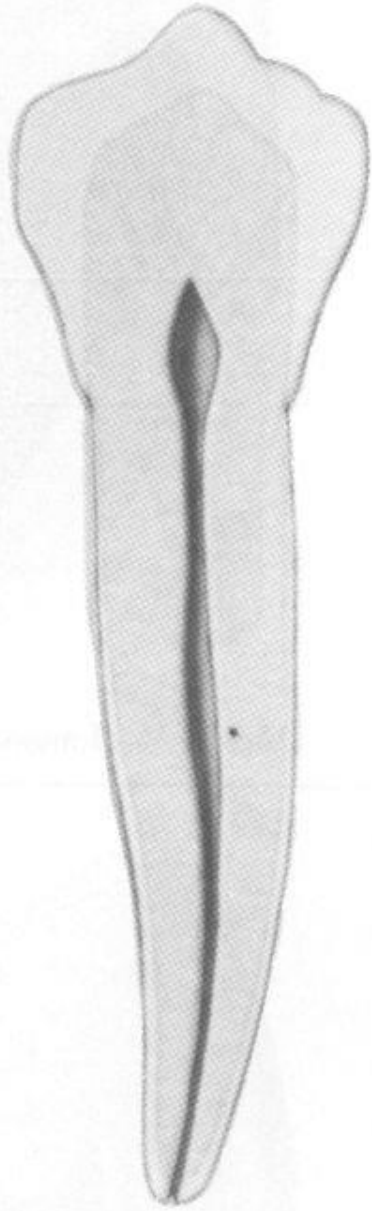
Distal



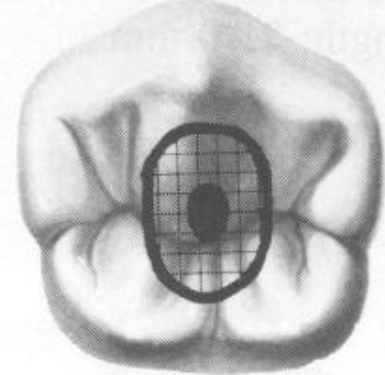
Buccal



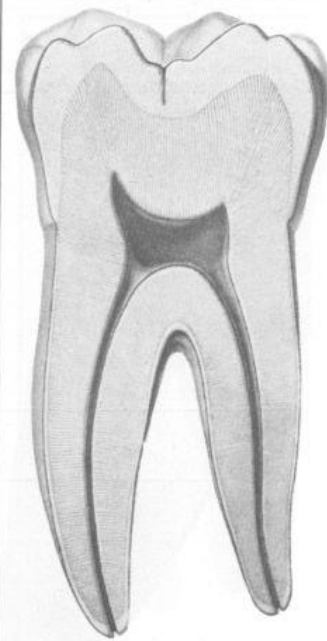
Distal



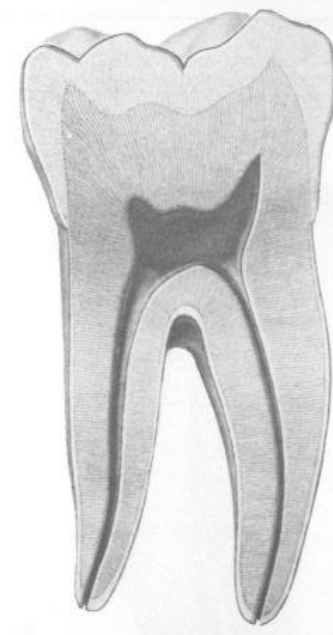
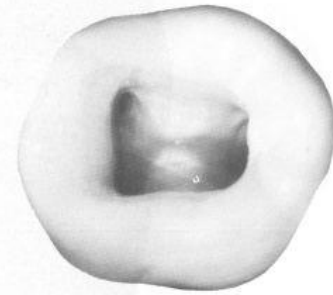
Buccal



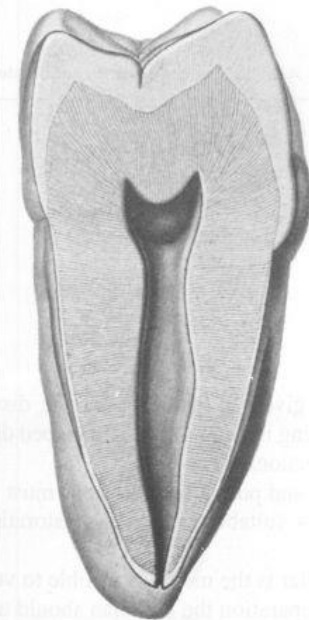
Distal



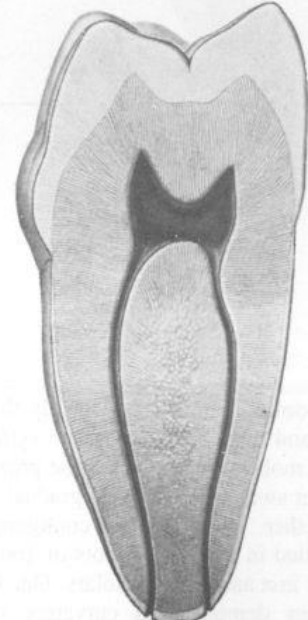
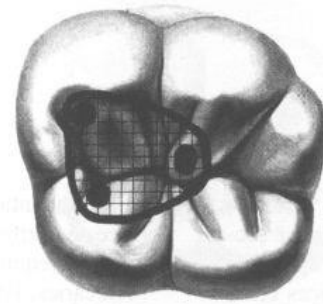
Buccal



Lingual



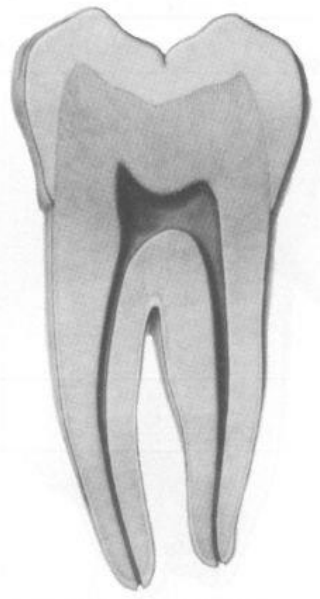
Distal



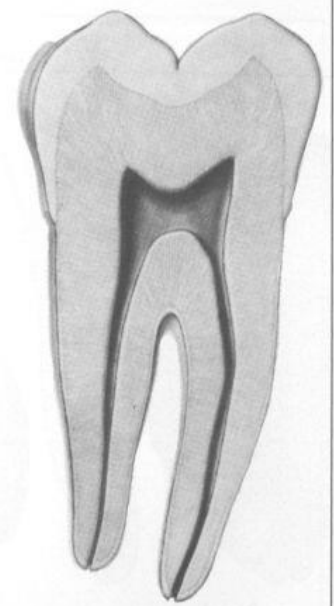
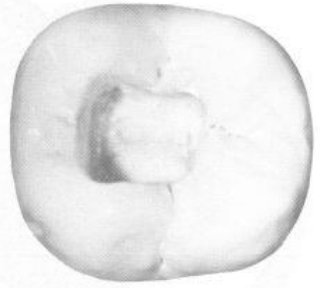
Mesial

Mandibular premolar

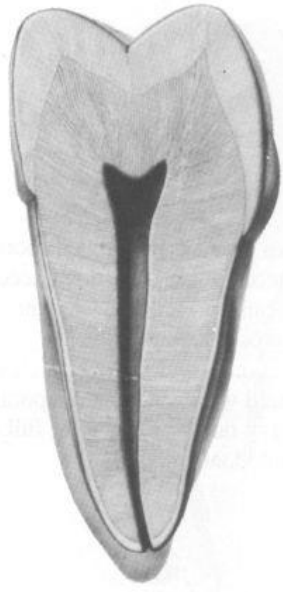
Average time of eruption: 11 to 13 years
Average age of calcification: 14 to 15 years
Average length: 19.8 mm



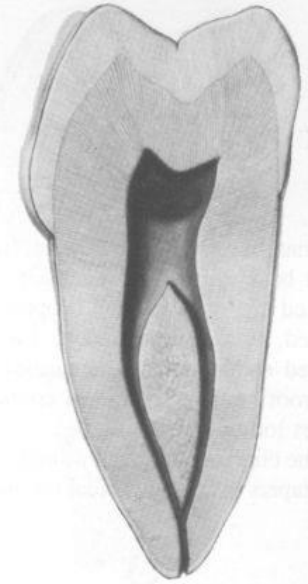
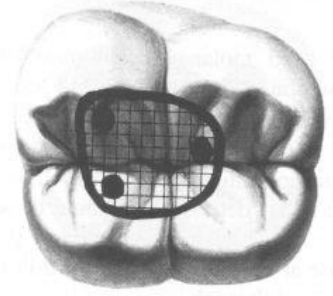
Buccal



Lingual

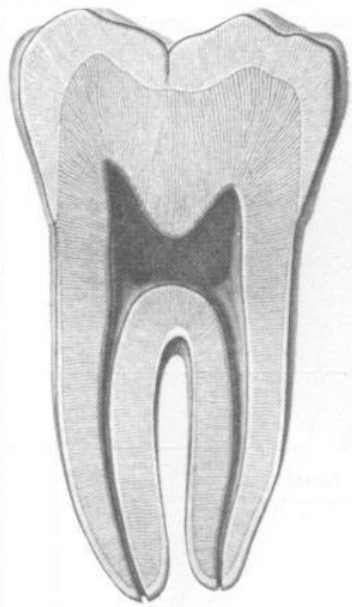


Distal

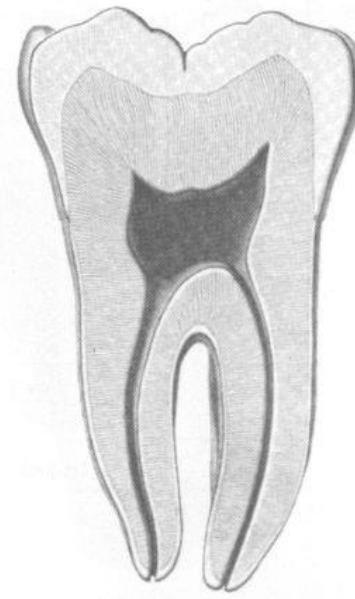
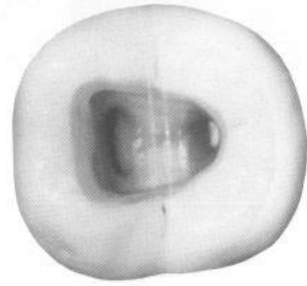


Mesial

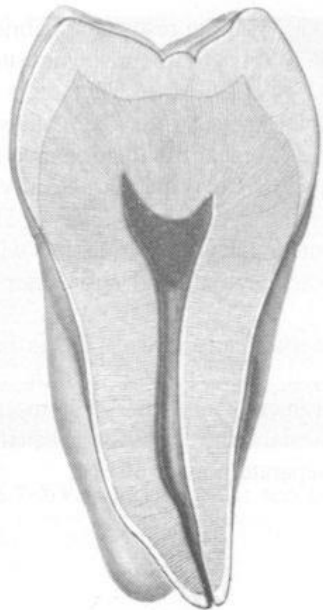
Average thickness of enamel: 1.7 mm
Average size of pulp chamber: 18 to 20 mm
Average length: 18.2 mm



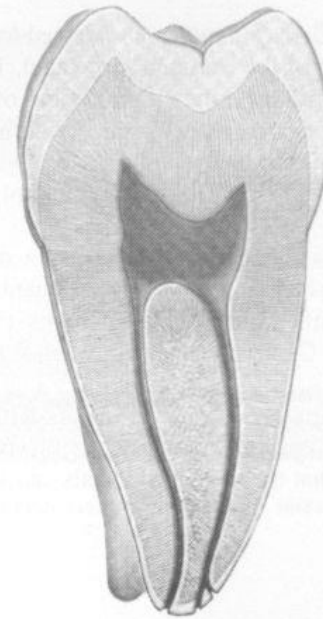
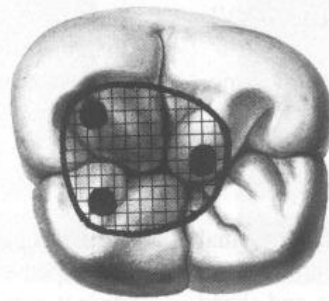
Buccal



Mesial



Distal



Lingual