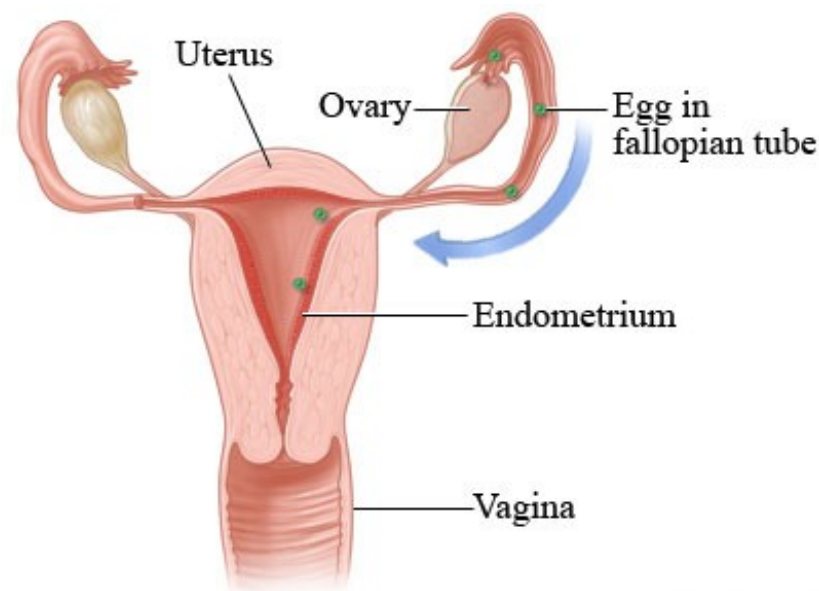




ŽENSKÝ POHLAVNÍ SYSTÉM I

- **vaječník** (ovarium, oophoron)
- **vejcovod** (tuba uterina, tuba Fallopii, salpinx)
- **děloha** (uterus, metra, hystera)



ovarium-člověk

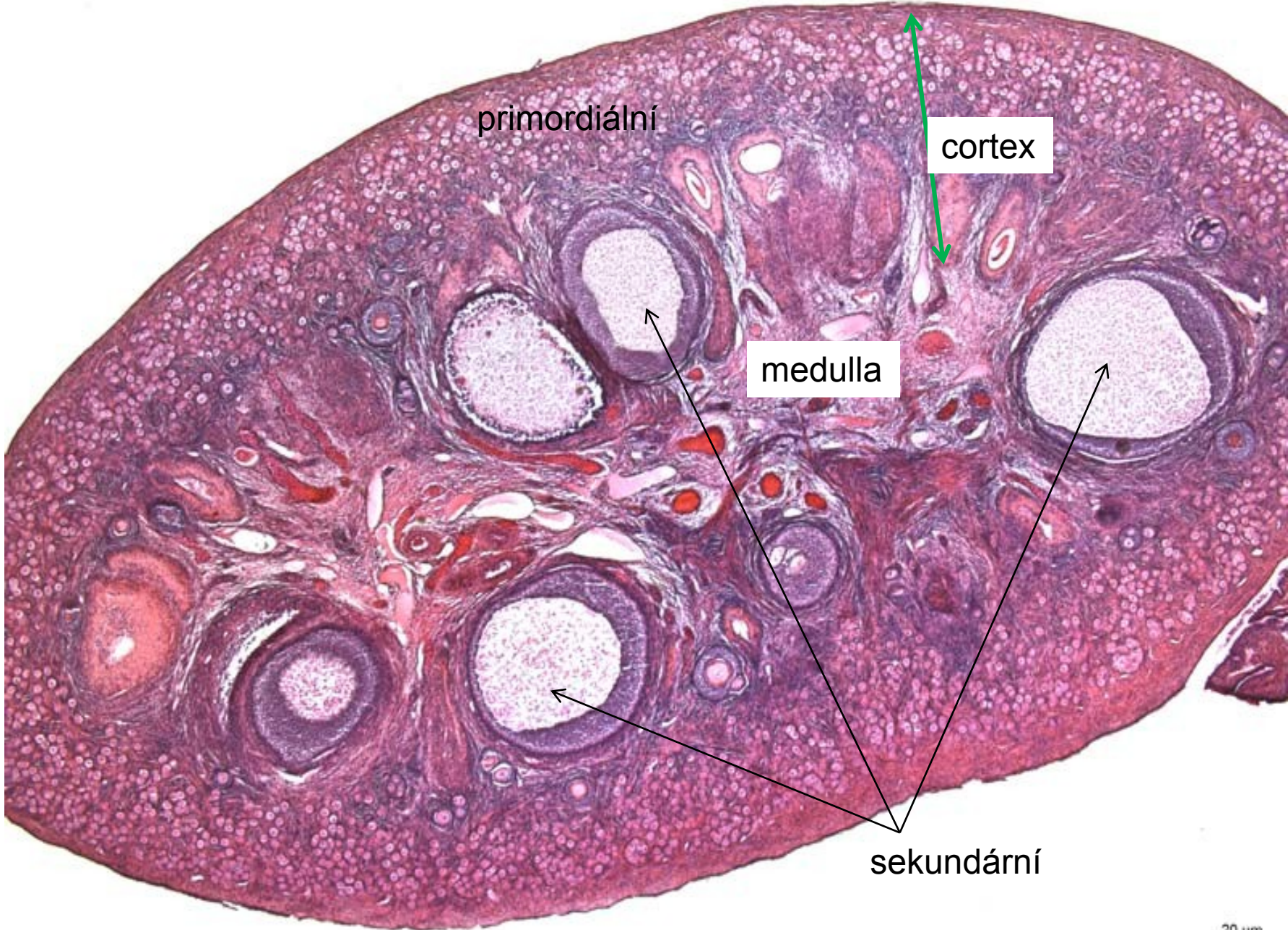


atretický sekundární
folikul

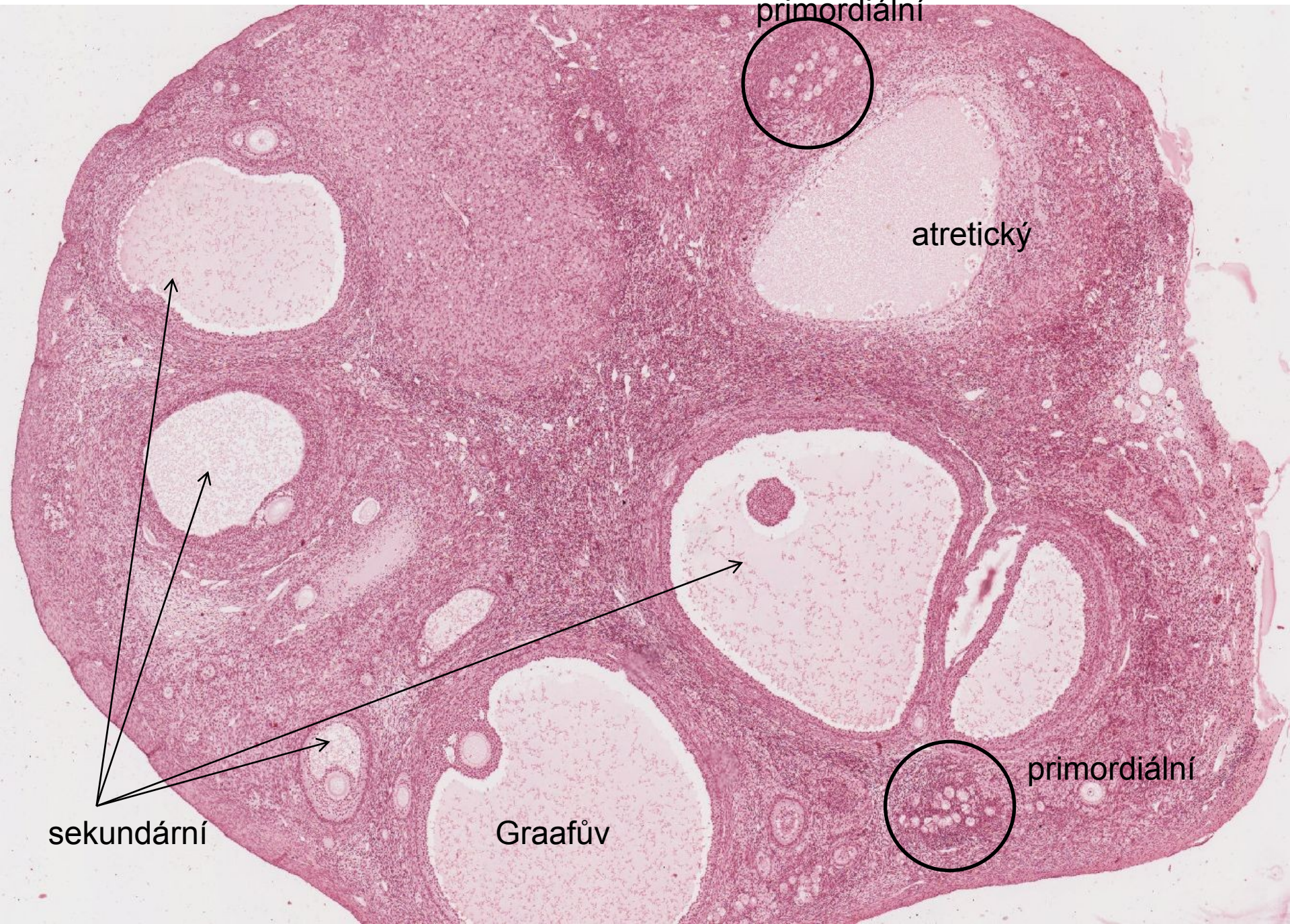
buněčné
vazivo

tunica
albuginea

ovarium-kočka



ovarium-kočka



primordiální

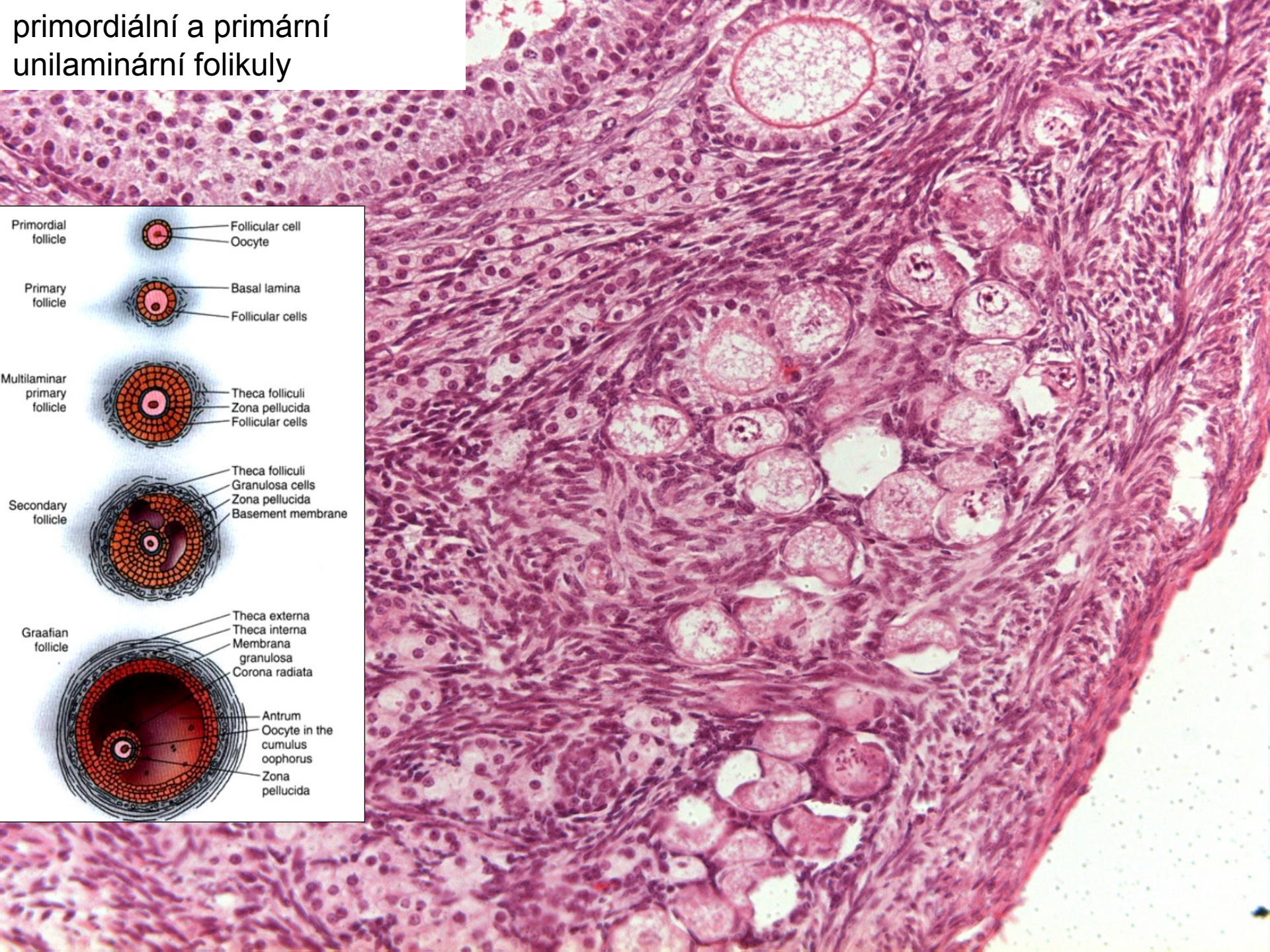
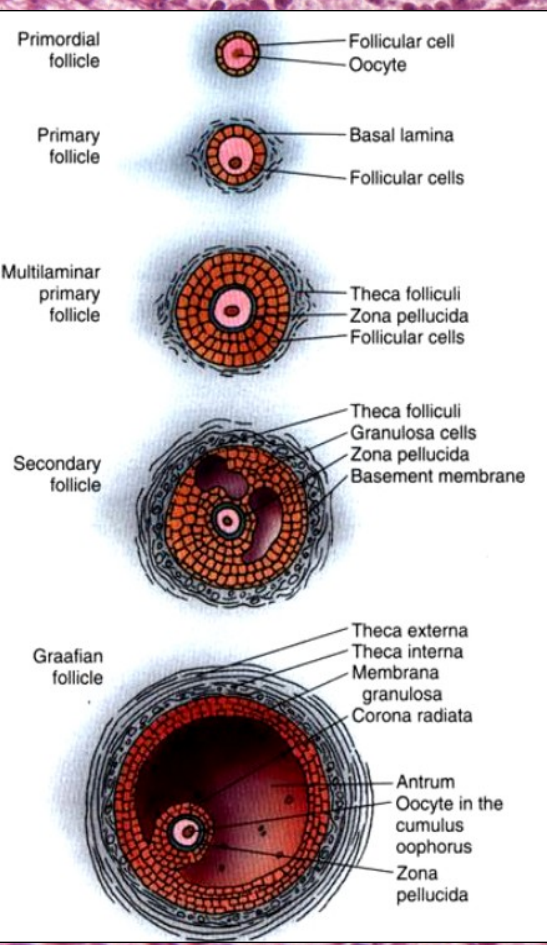
atretický

primordiální

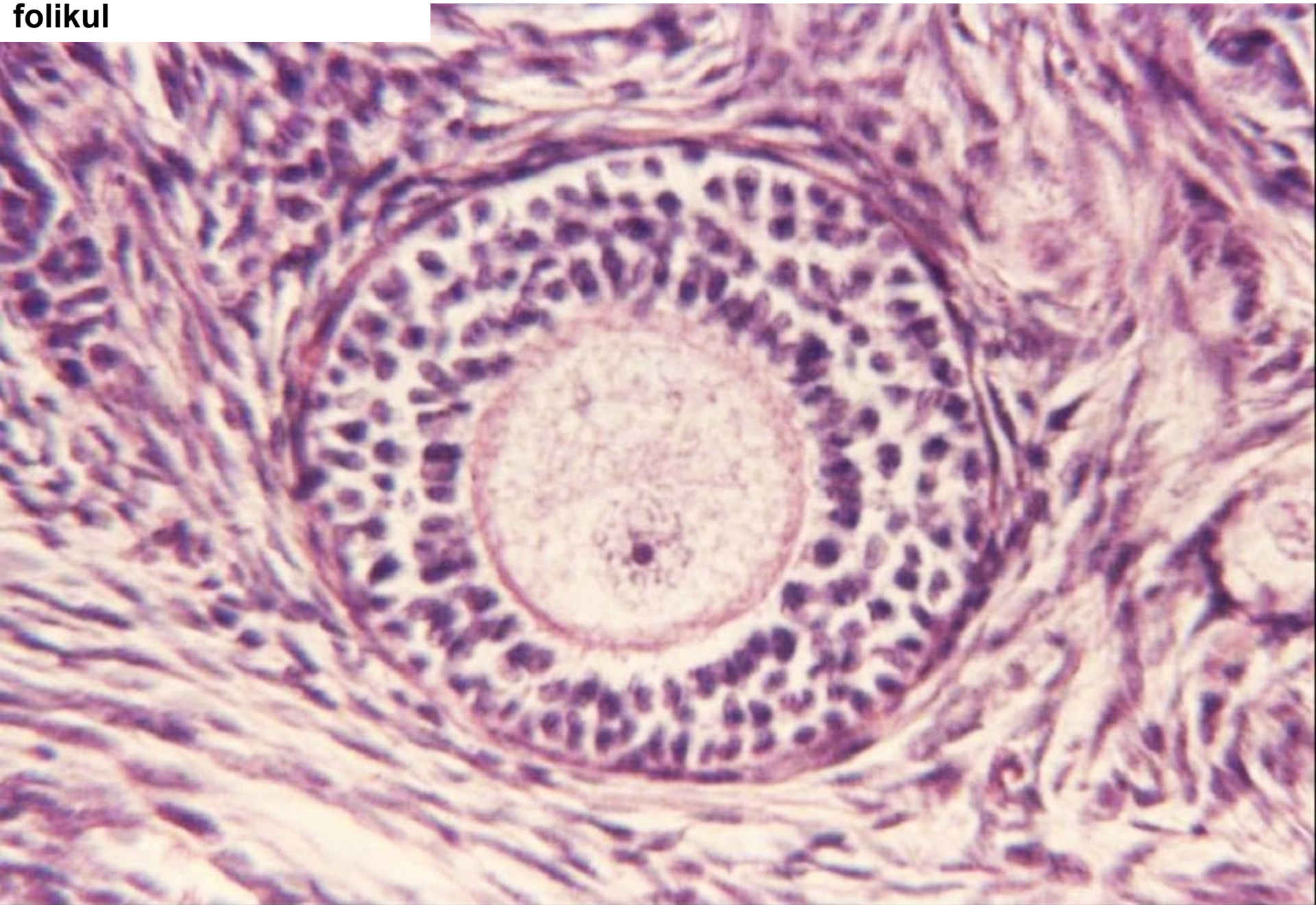
Graafův

sekundární

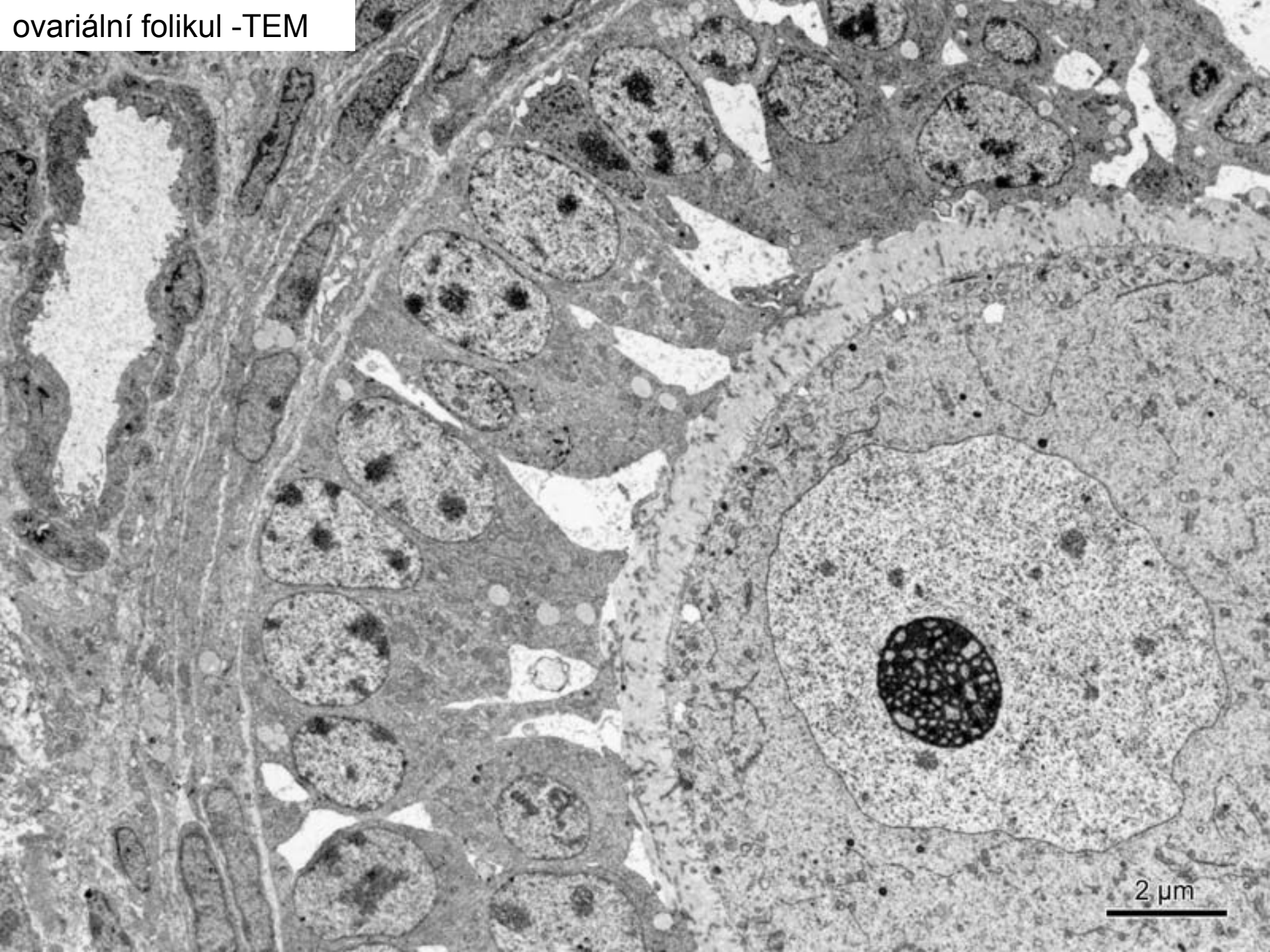
primordiální a primární unilaminární folikuly



**primární multilaminární
folikul**

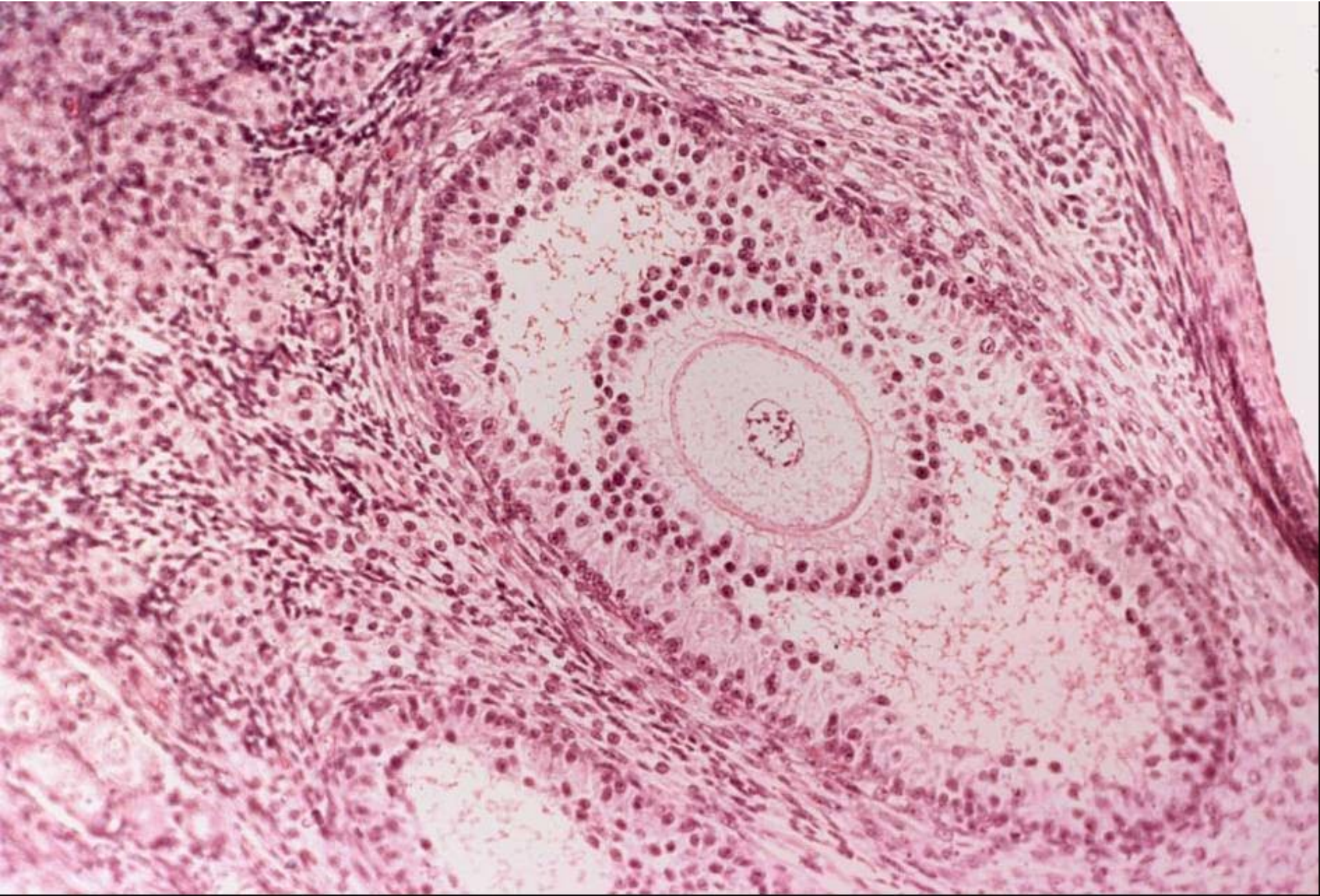


ovariální folikul -TEM

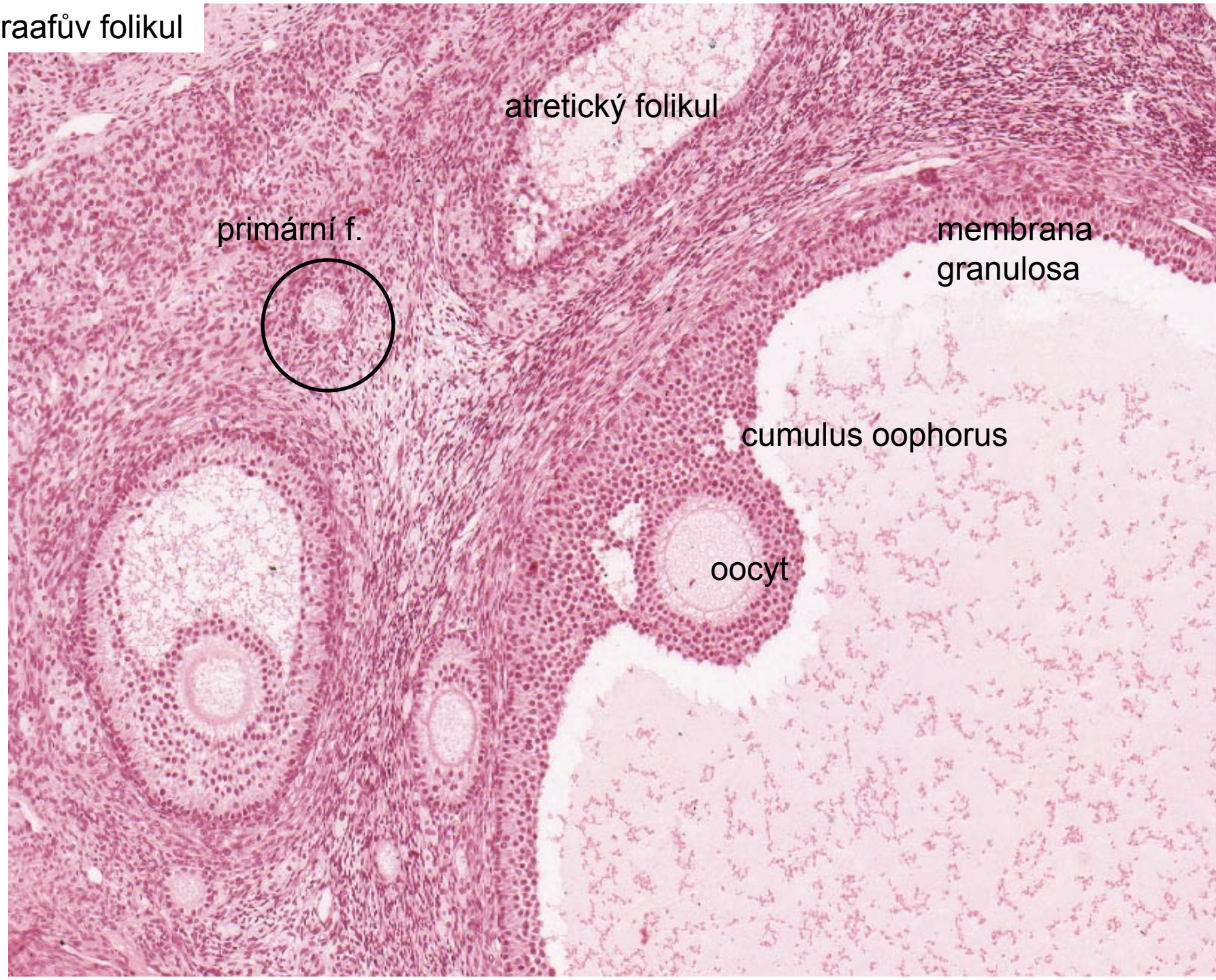


2 μ m

sekundární folikul

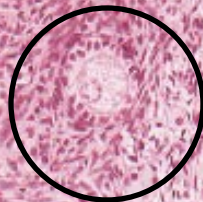


Graafův folikul



atretický folikul

primární f.



membrana
granulosa

cumulus oophorus

oocyt

zárodečný epitel

tunica albuginea

theca f. externa

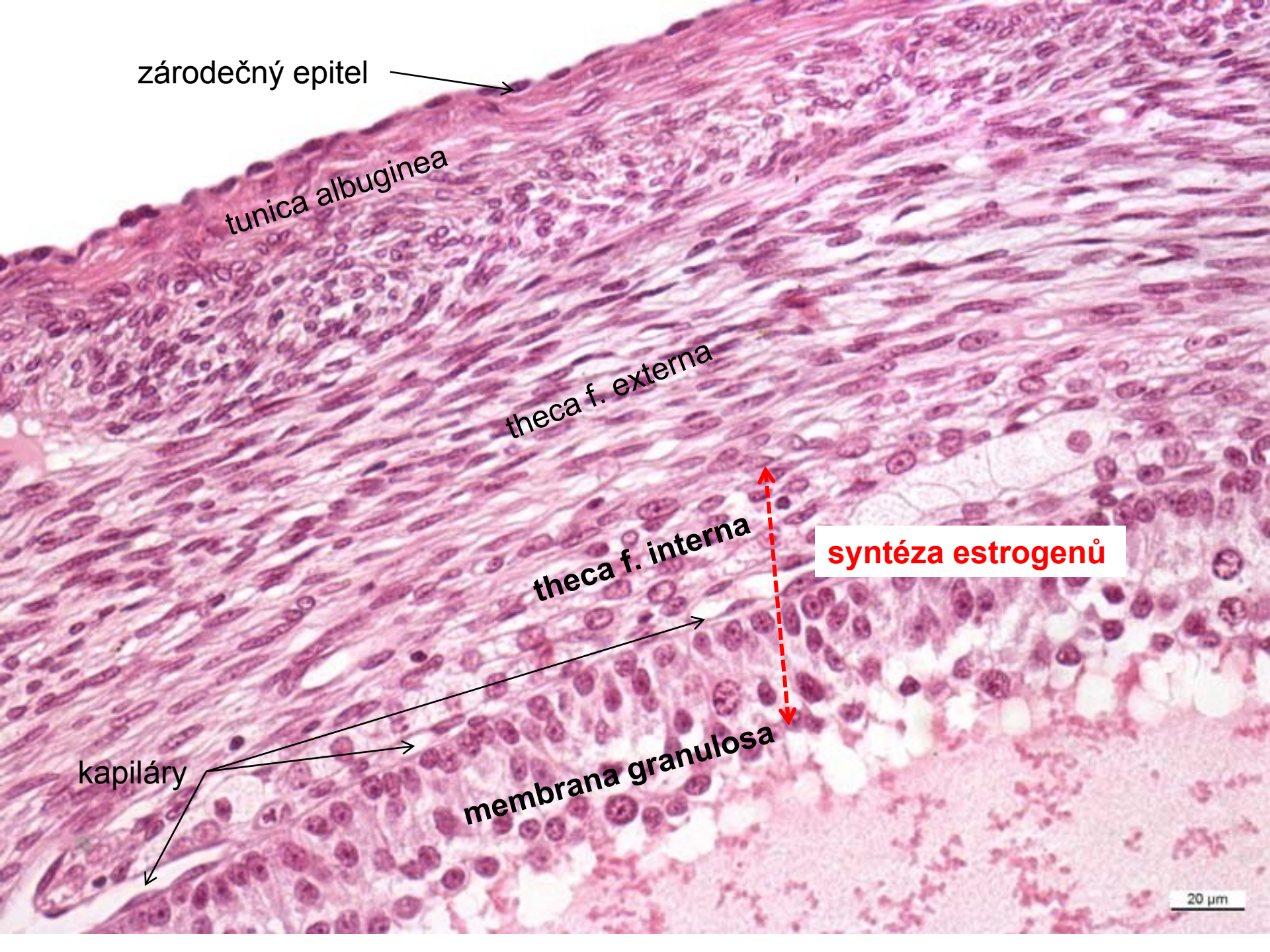
theca f. interna

syntéza estrogenů

kapiláry

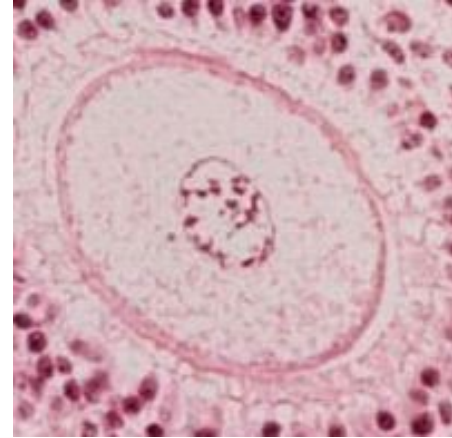
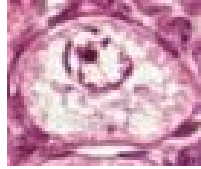
membrana granulosa

20 μm



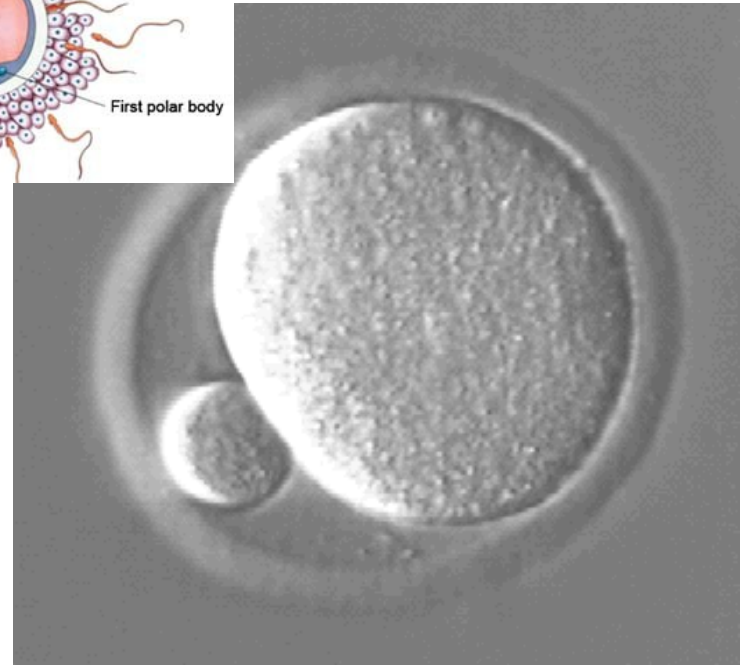
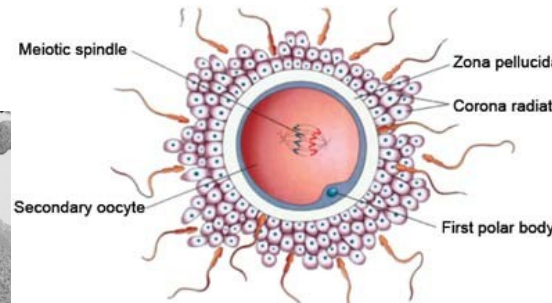
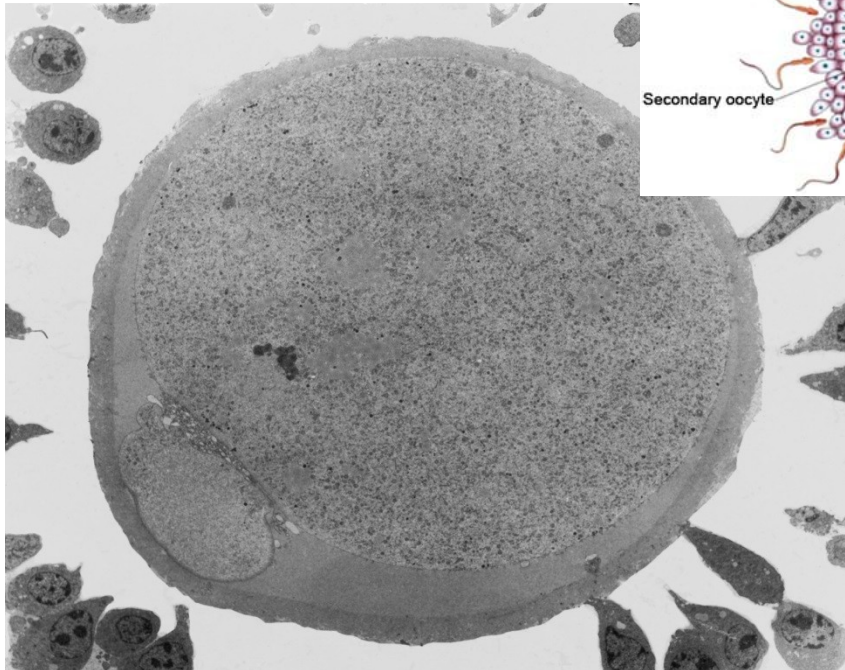
oocyt v průběhu 1. meiotického dělení

30 μm



130 μm

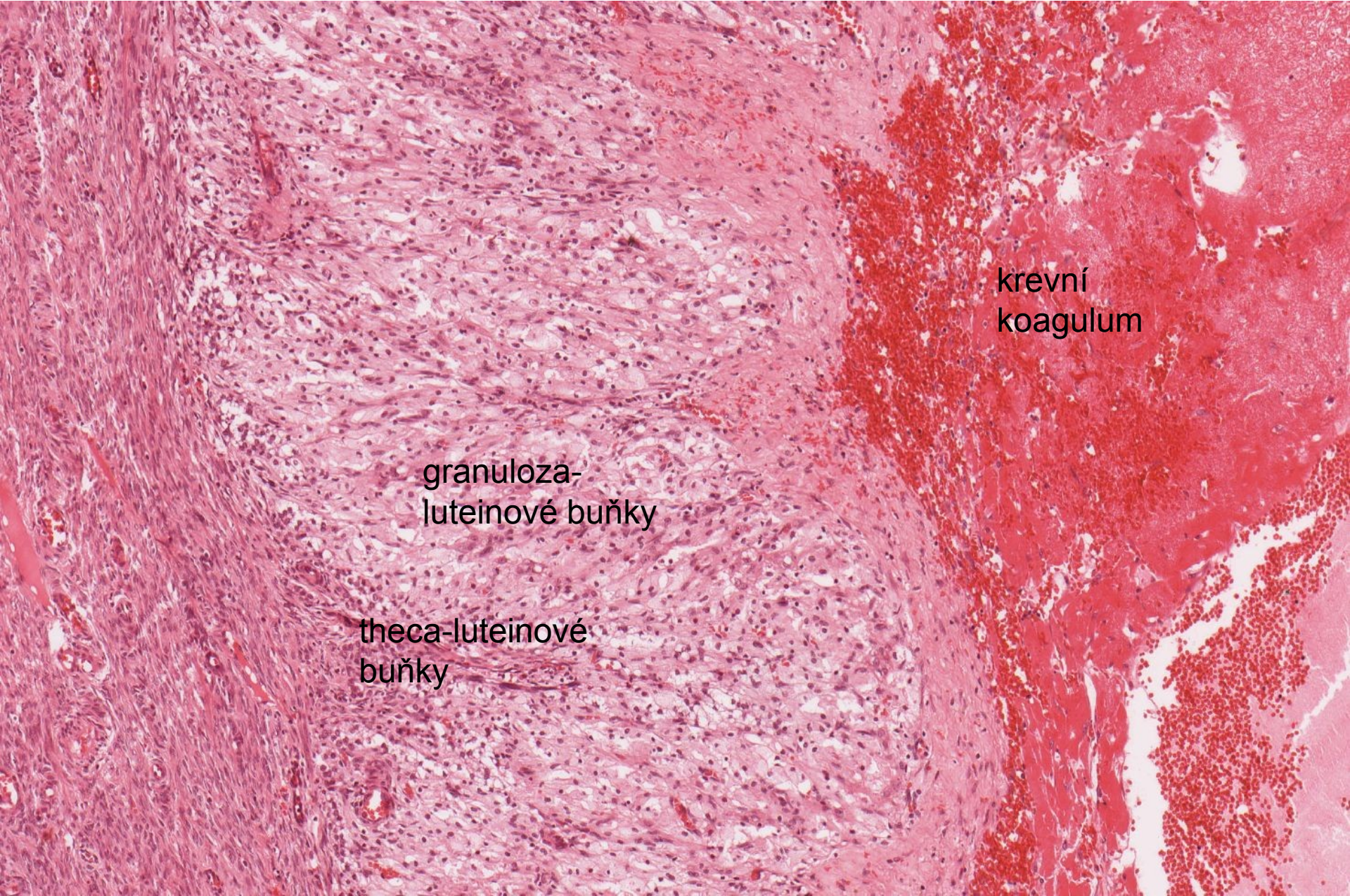
oocyt během ovulace



ovarium-corpora luteum



ovarium-corpus luteum

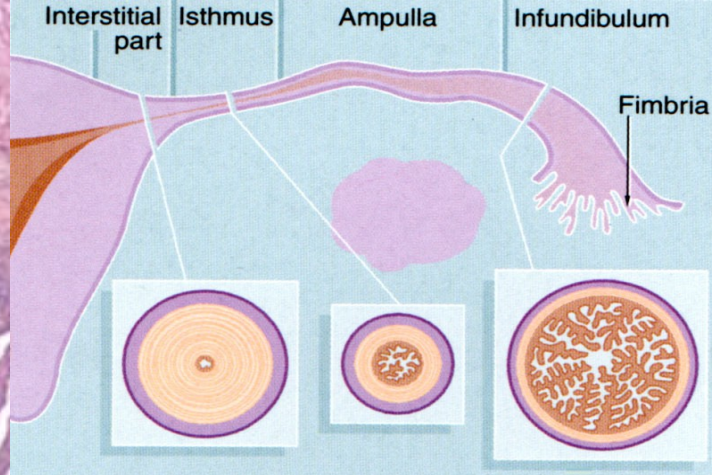


krevní
koagulum

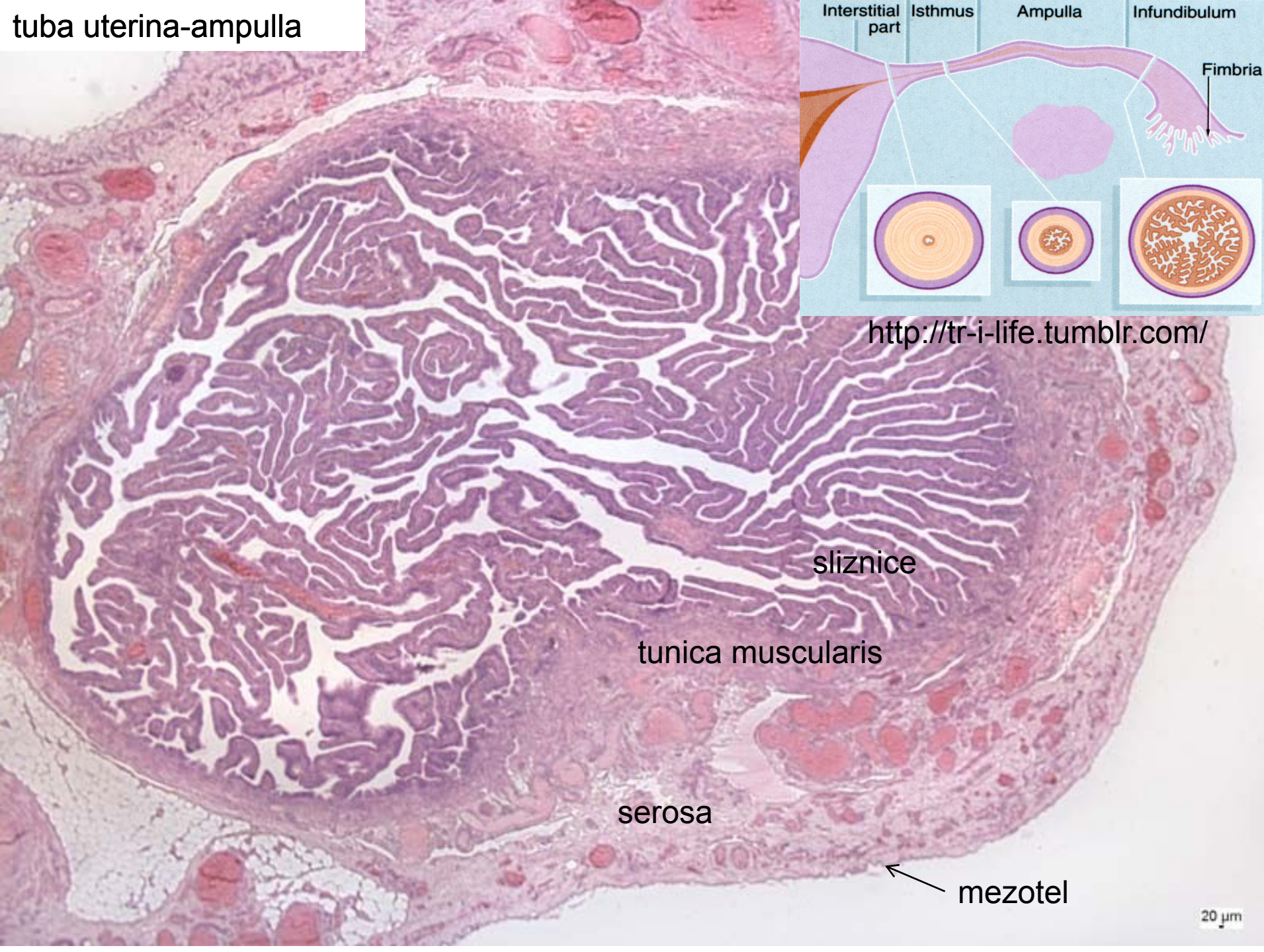
granuloza-
luteinové buňky

theca-luteinové
buňky

tuba uterina-ampulla



<http://tr-i-life.tumblr.com/>



sliznice

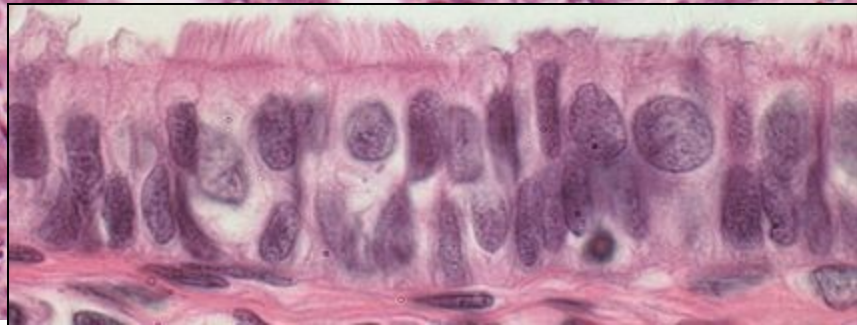
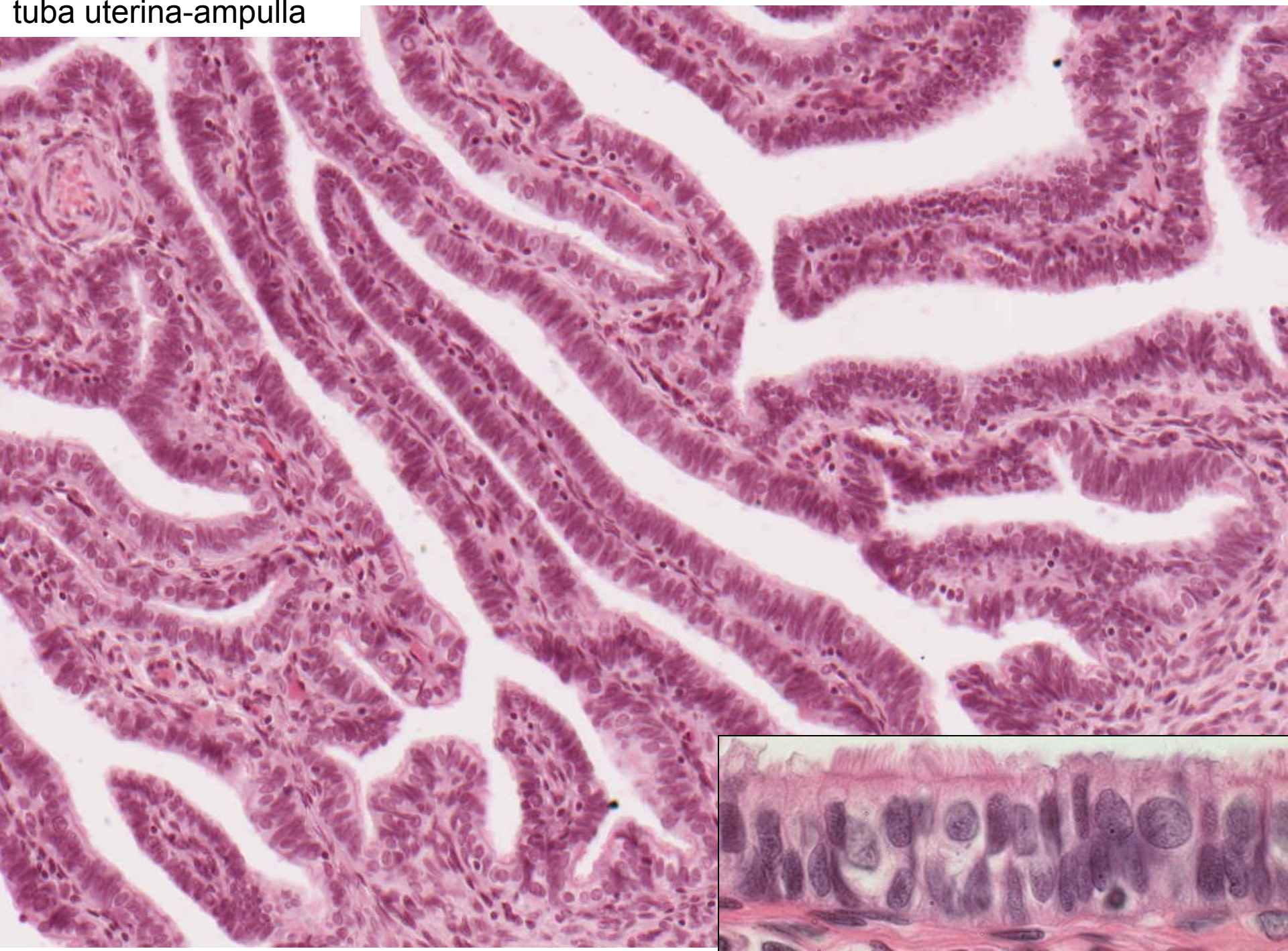
tunica muscularis

serosa

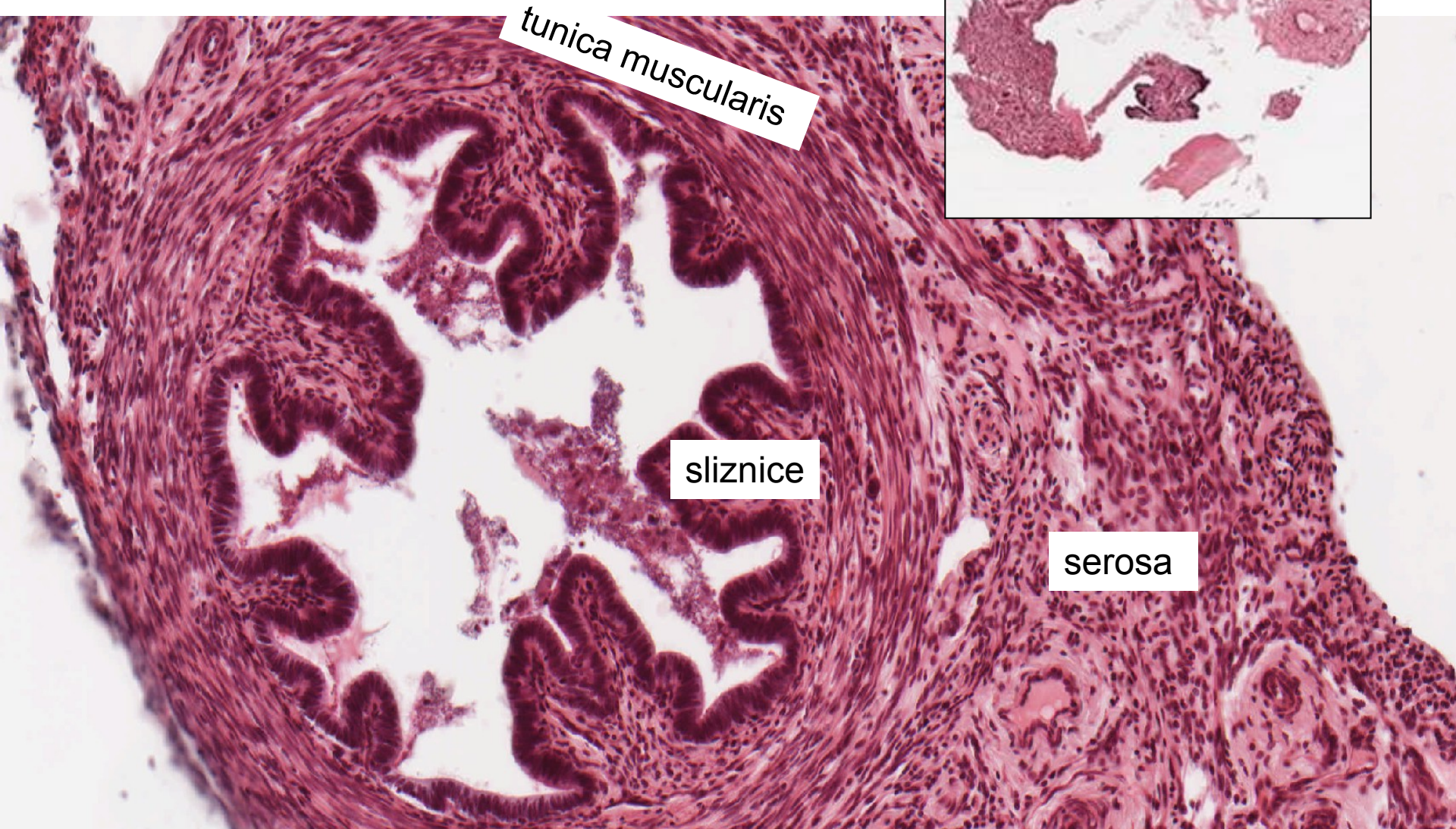
mezotel

20 μm

tuba uterina-ampulla



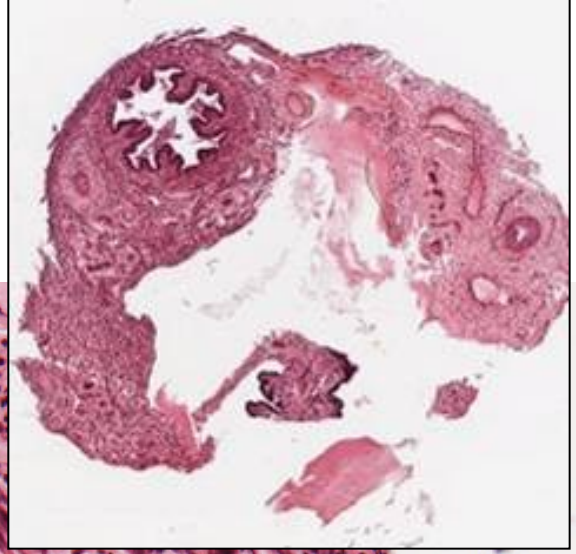
tuba uterina-isthmus

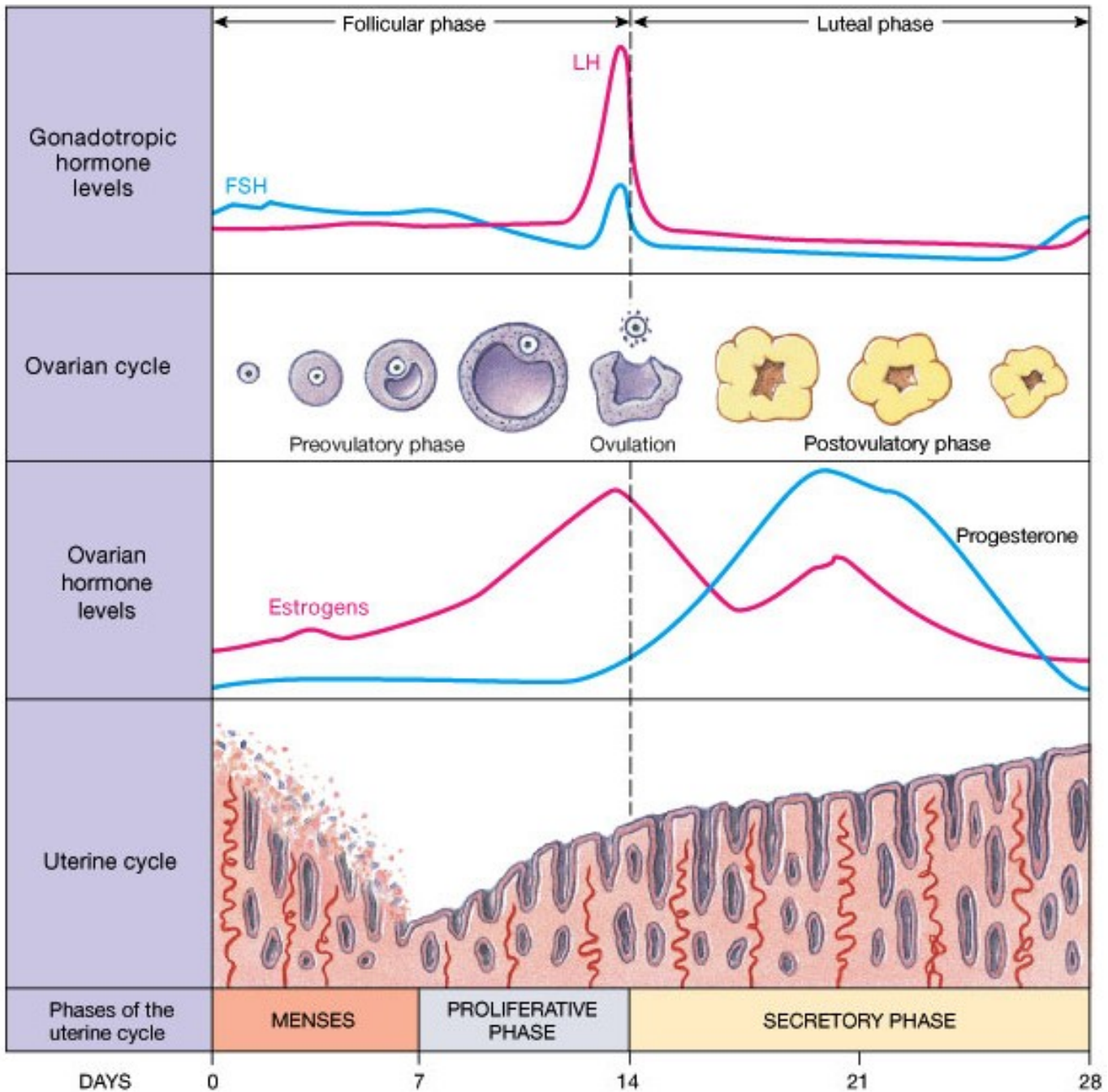


tunica muscularis

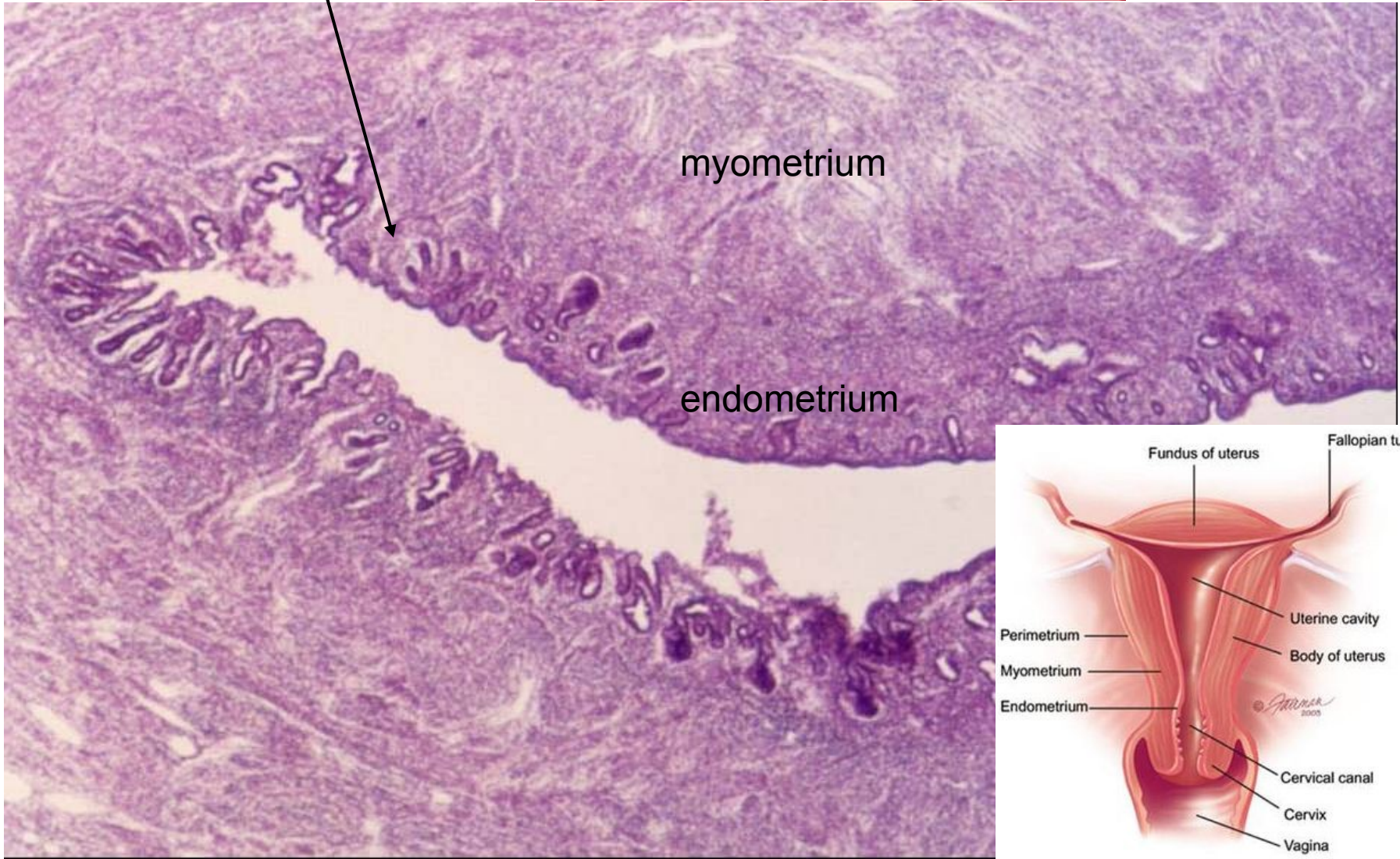
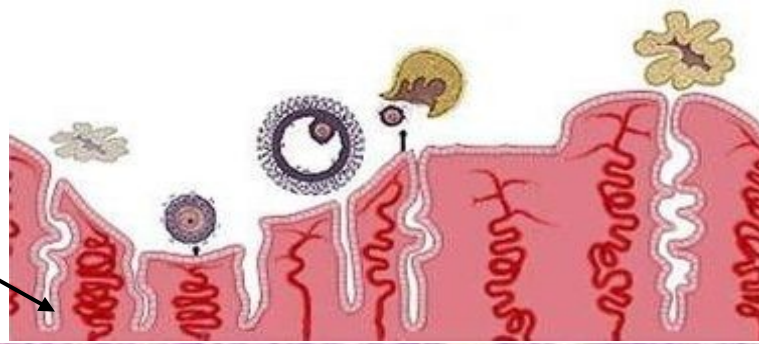
sliznice

serosa



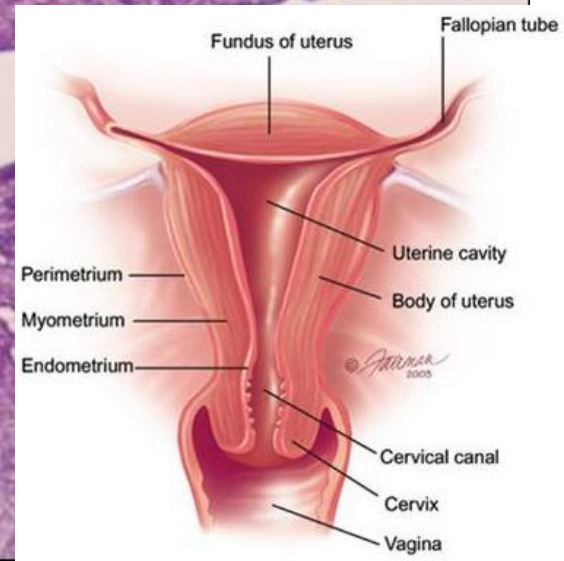


Ovariální a menstruační cyklus



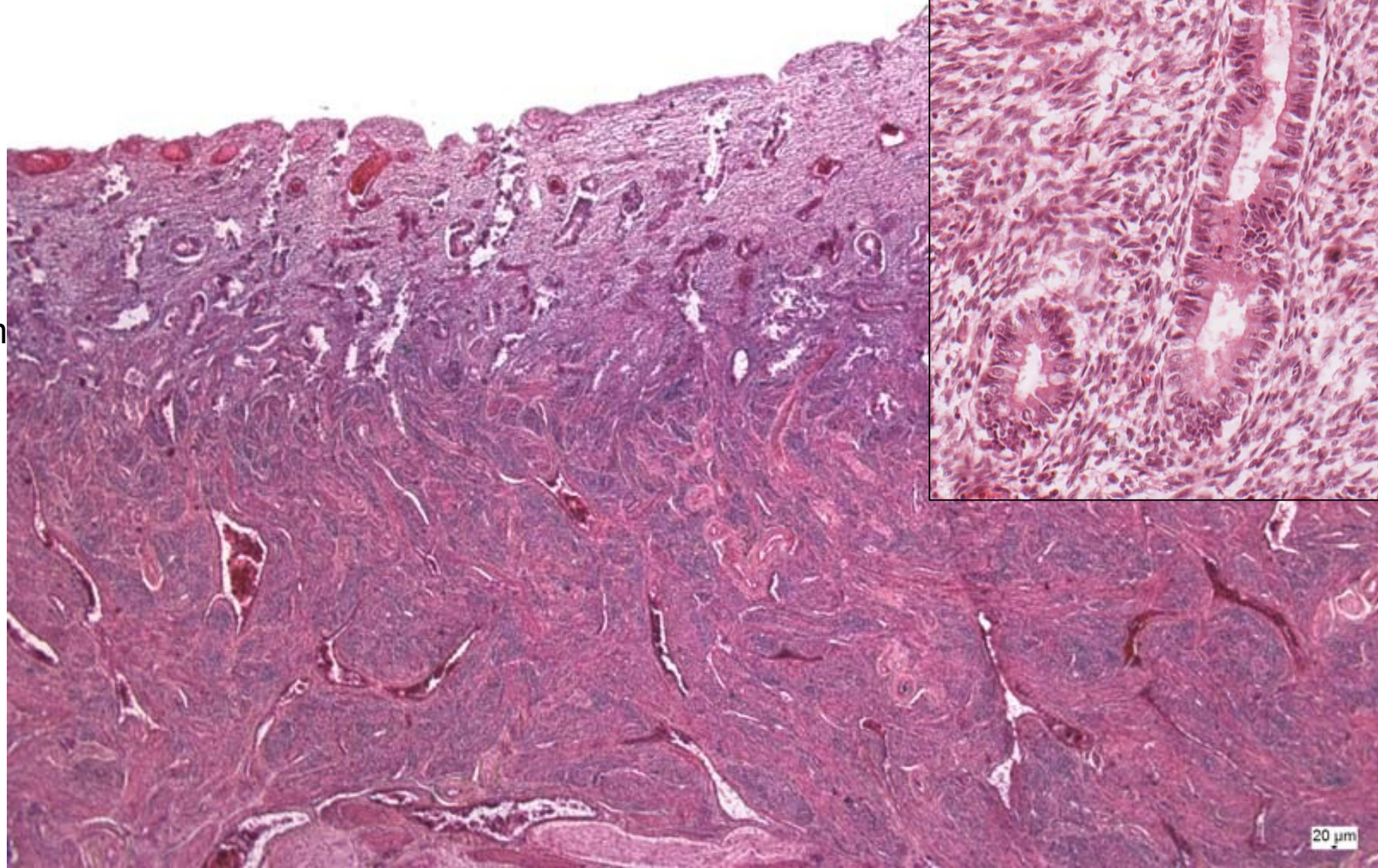
myometrium

endometrium

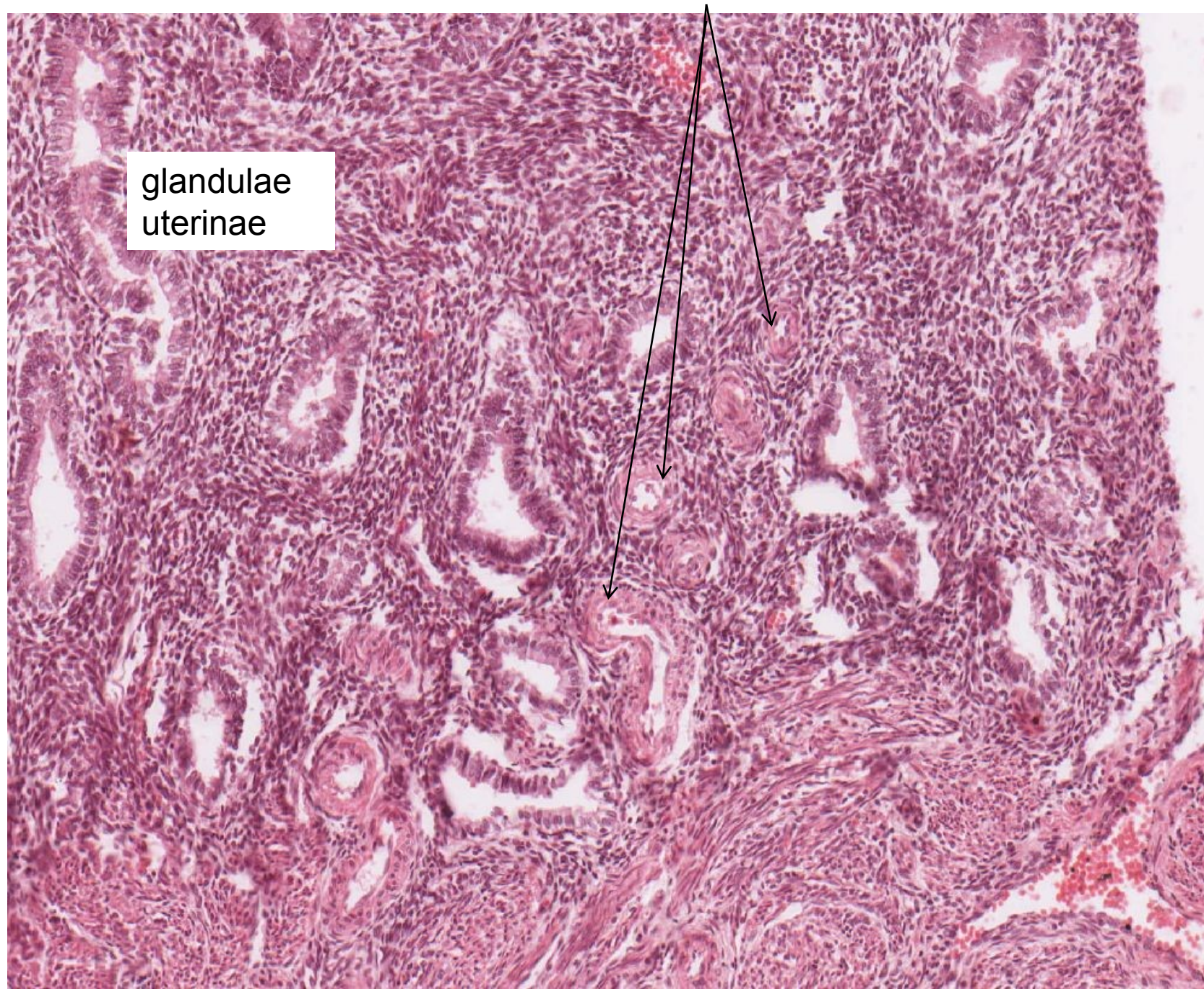


**Endometrium – proliferační fáze
– glandulae uterinae**

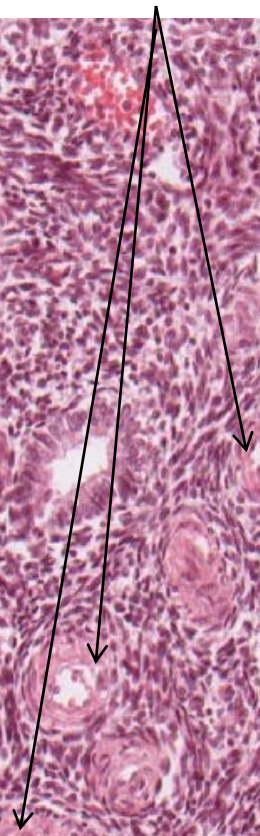
3-4
mm



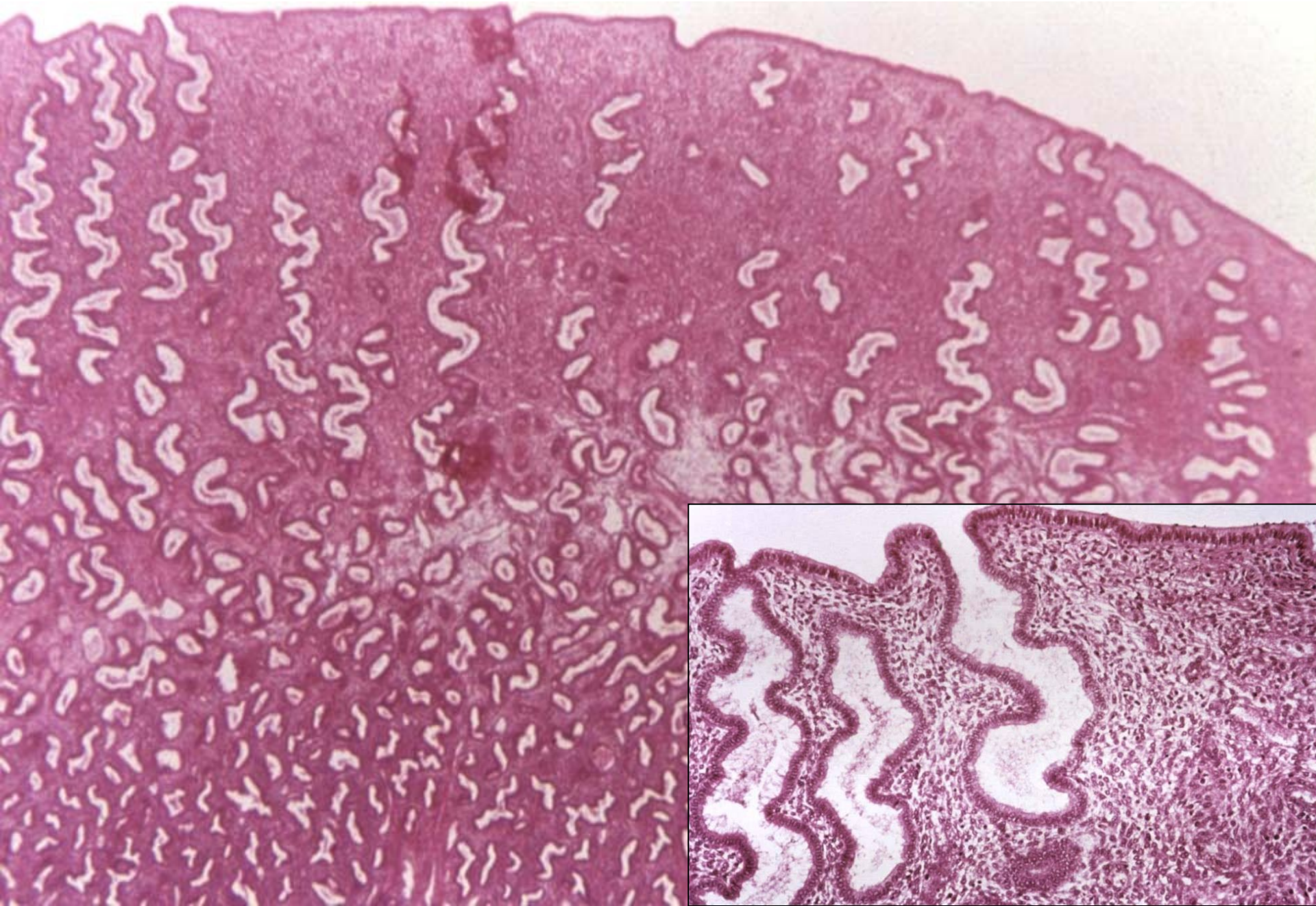
Endometrium – proliferační fáze – arteriae helicinae, buněčné vazivo



glandulae
uterinae

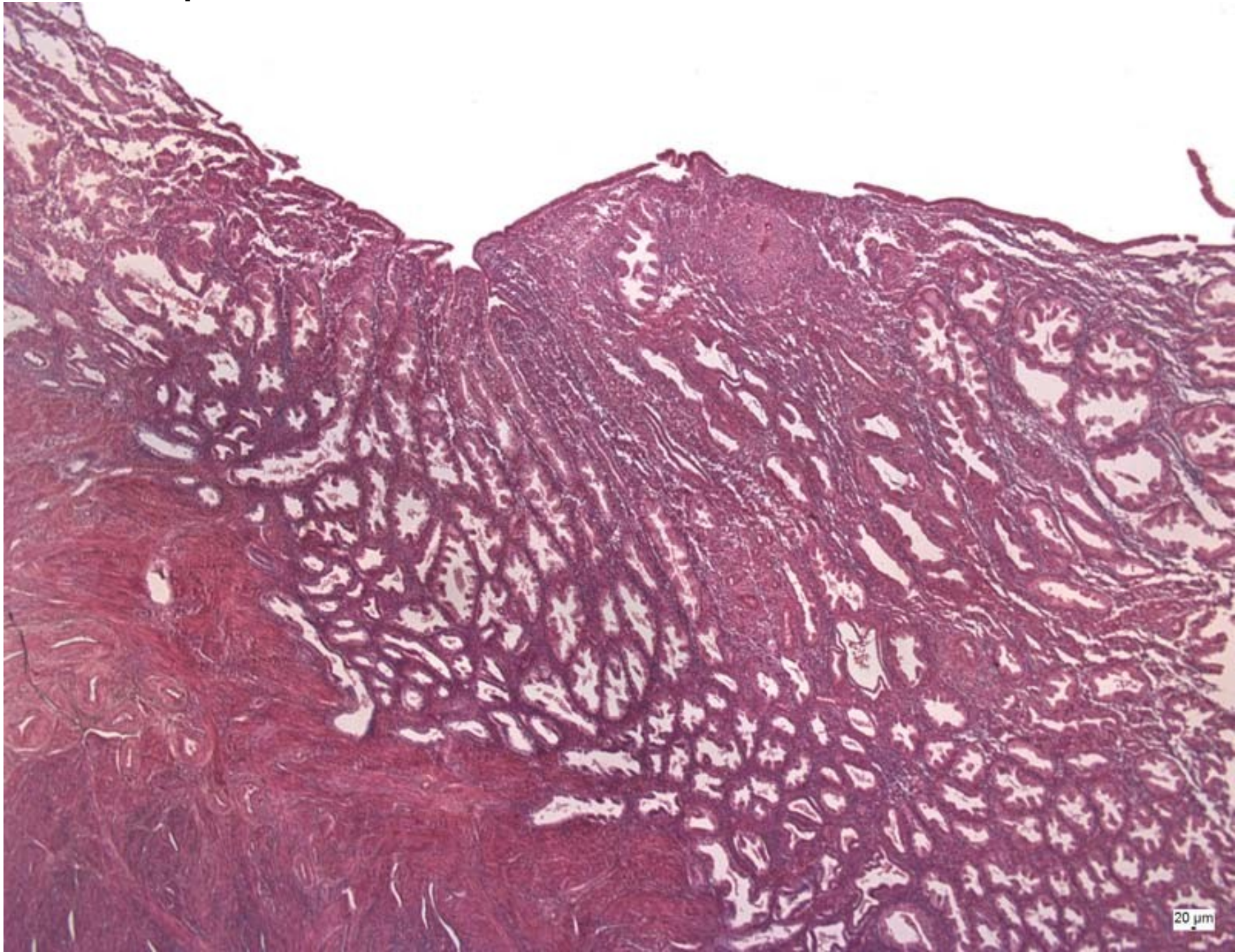


Endometrium – začátek sekreční fáze

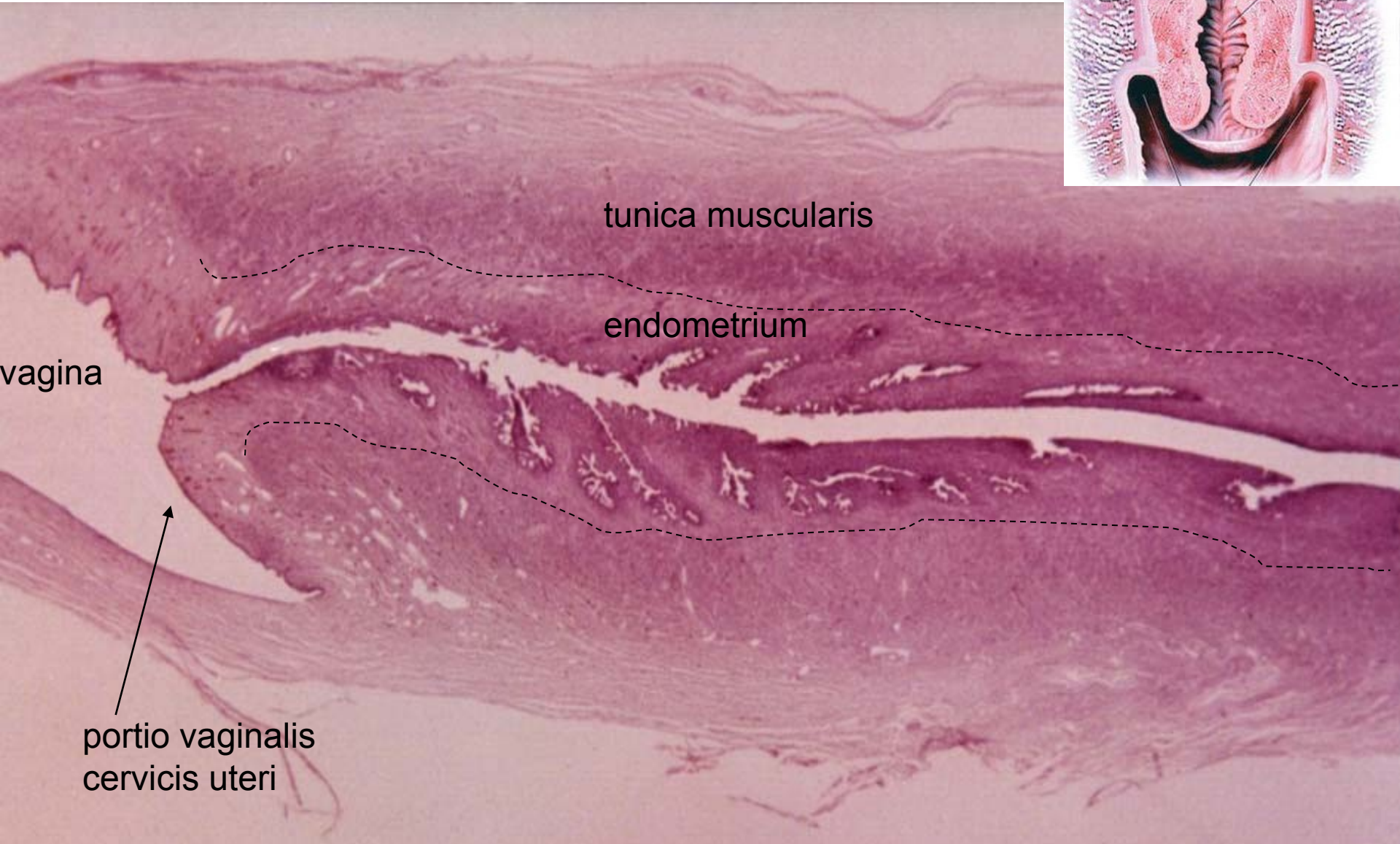
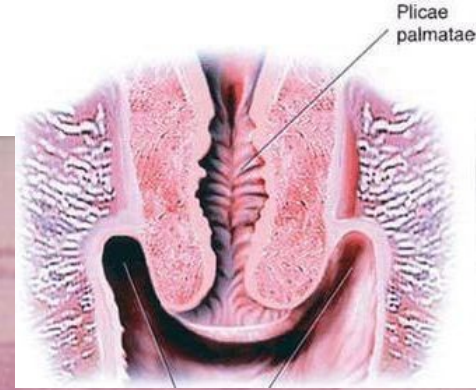


Endometrium – pokročilá sekreční fáze

5-7
mm



Cervix uteri



glandulae cervicales – cervikální hlen

Portio vaginalis cervicis uteri - přechod epitelů

jednovrst.cyl.epi (endocervix)

vrst.dlažd.epi (ektocervix)





ŽENSKÝ POHLAVNÍ SYSTÉM I

Preparáty:

- 42. Ovarium
- 43. Ovarium – kočka
- 44. Corpus luteum
- 45. Tuba uterina – ampulla
- 46. Tuba uterina – isthmus
- 47. Uterus – proliferativní fáze
- 48. Uterus – sekreční fáze

Atlas EM:

- Lidský primární ovariální folikul (72)
- Od gamet k časnému embryu (74)