

# Muscles of the lower limb

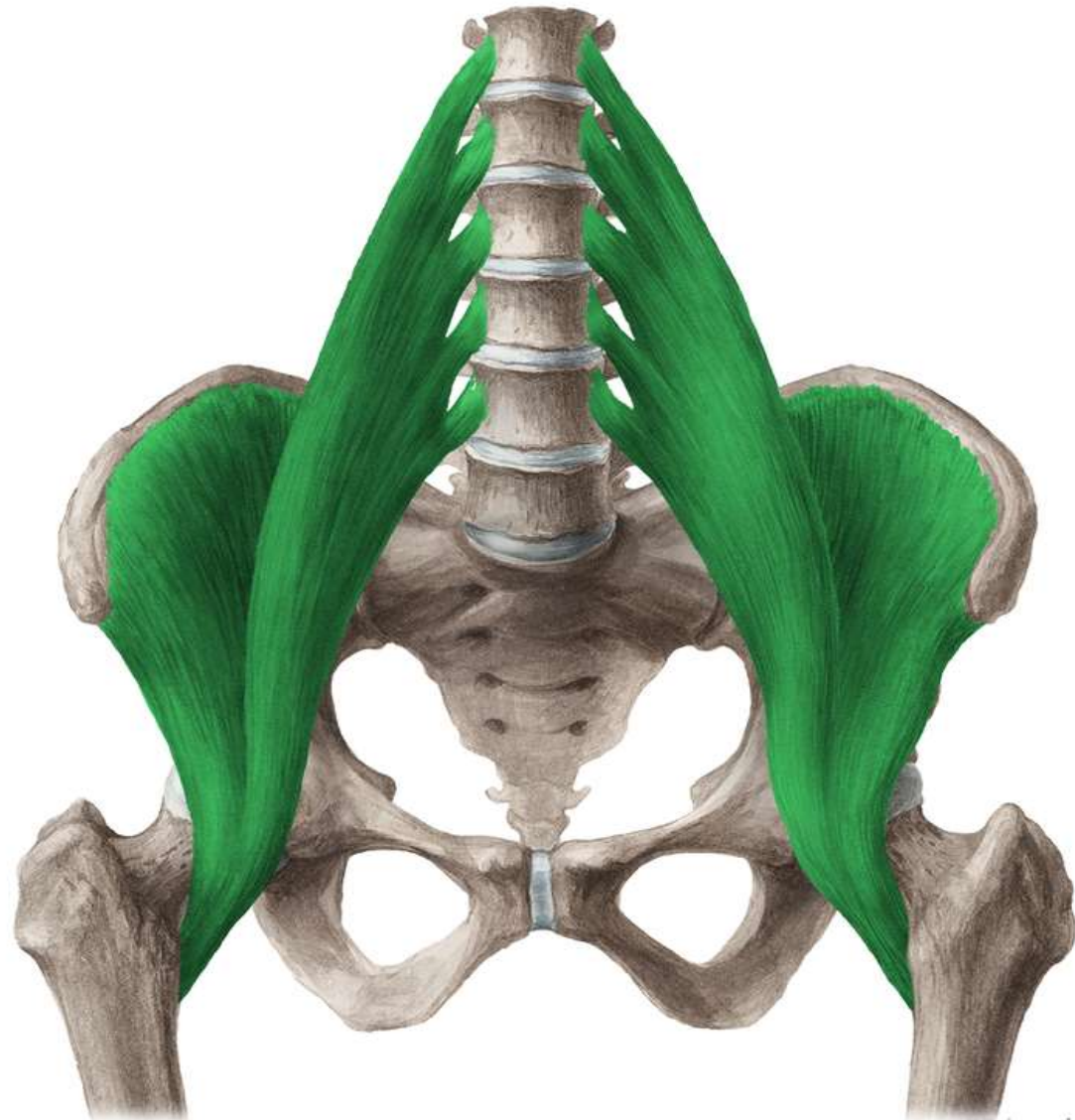


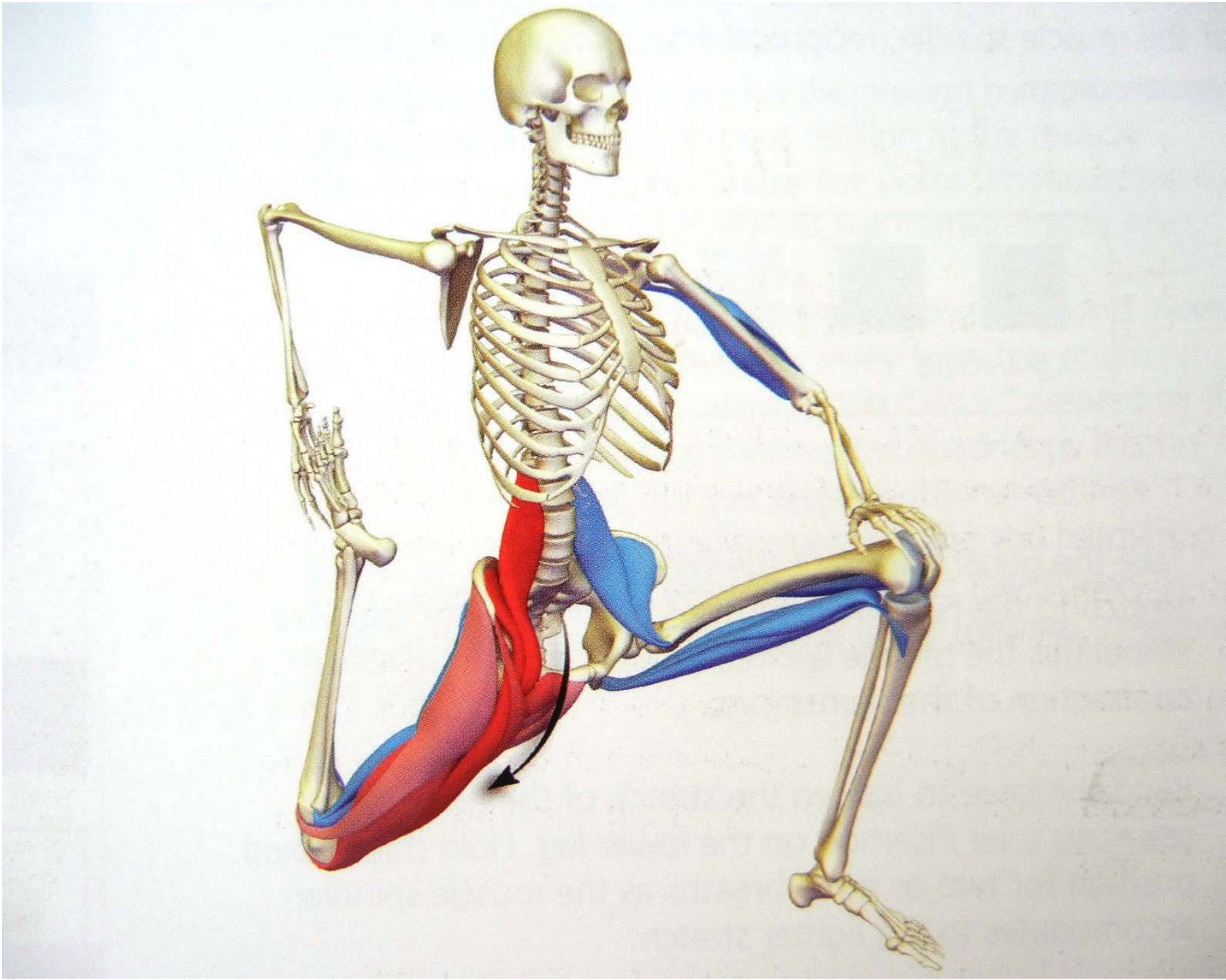
**Mm. coxae**  
**(Coxal muscles)**

# ANTERIOR GROUP

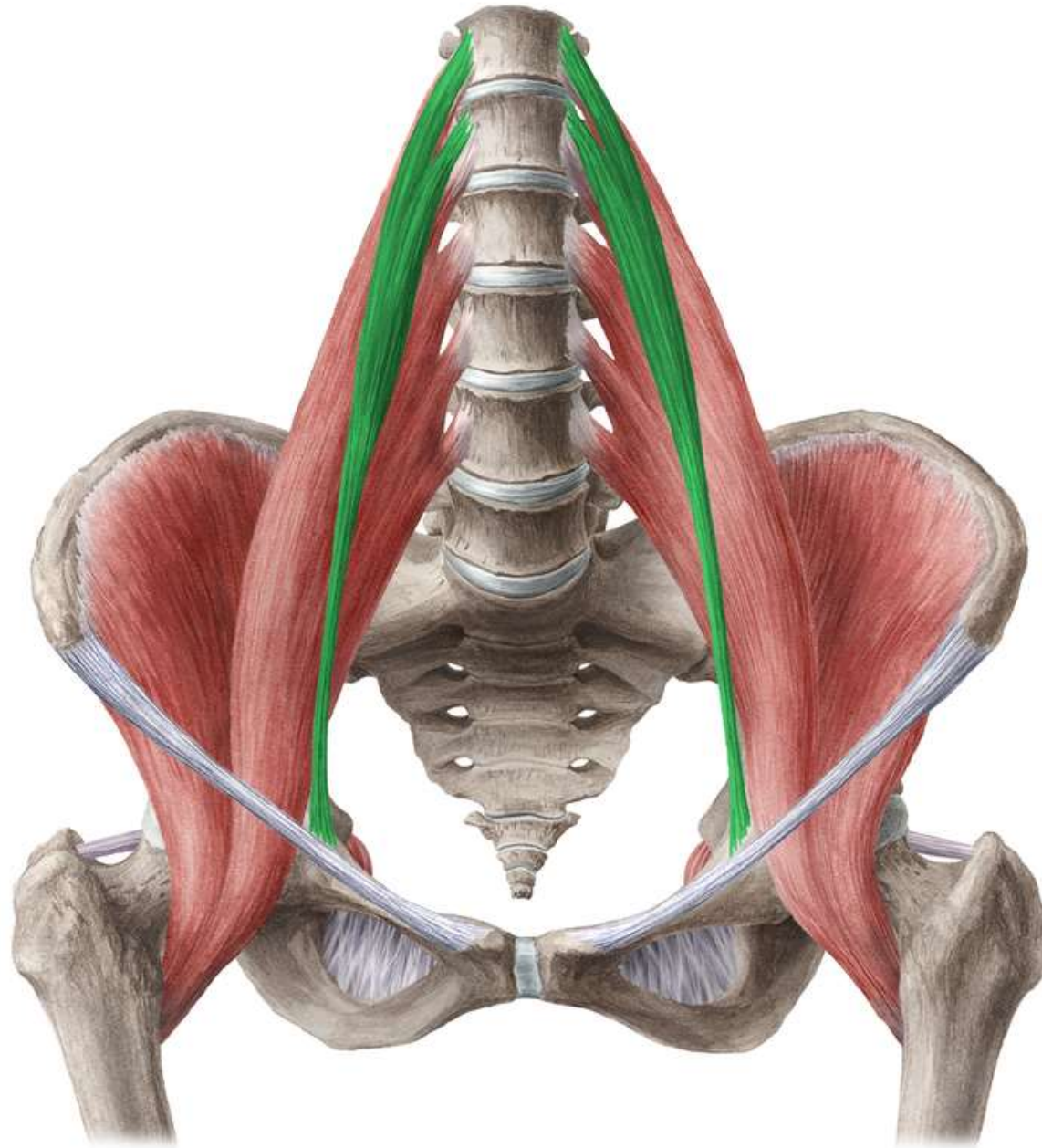
# Musculus iliopsoas

- **ORIGIN:**disci intervertebrales and fibrous bundles along the lumbar spine, fossa iliaca
- **INSERTION:** trochanter minor femoris
- **INNERVATION:** plexus lumbalis
- **FUNCTION:** flexion of hip joint (it starts stepping)





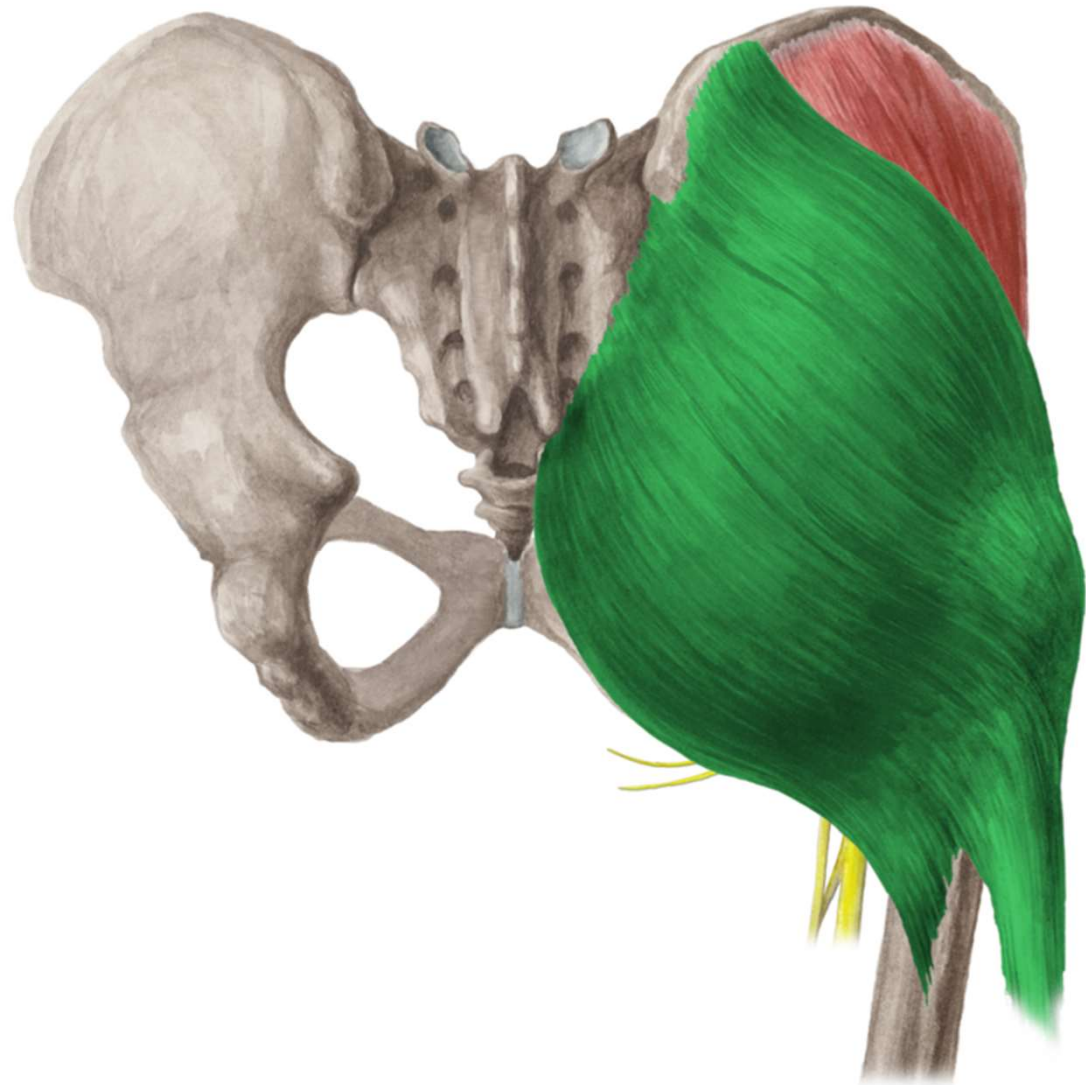




POSTERIOR GROUP

# Musculus gluteus maximus

- **ORIGIN:** linea glutea posterior, alae ossis ilium, fascia thoracolumbalis
- **INSERTION:** tractus iliotibialis, tuberositas glutea and proximal part of labium laterale lineae asperae femoris
- **INNERVATION:** n. gluteus inferior
- **FUNCTION:** extension of hip joint, by pulling tractus, it fixes the knee joint in extension

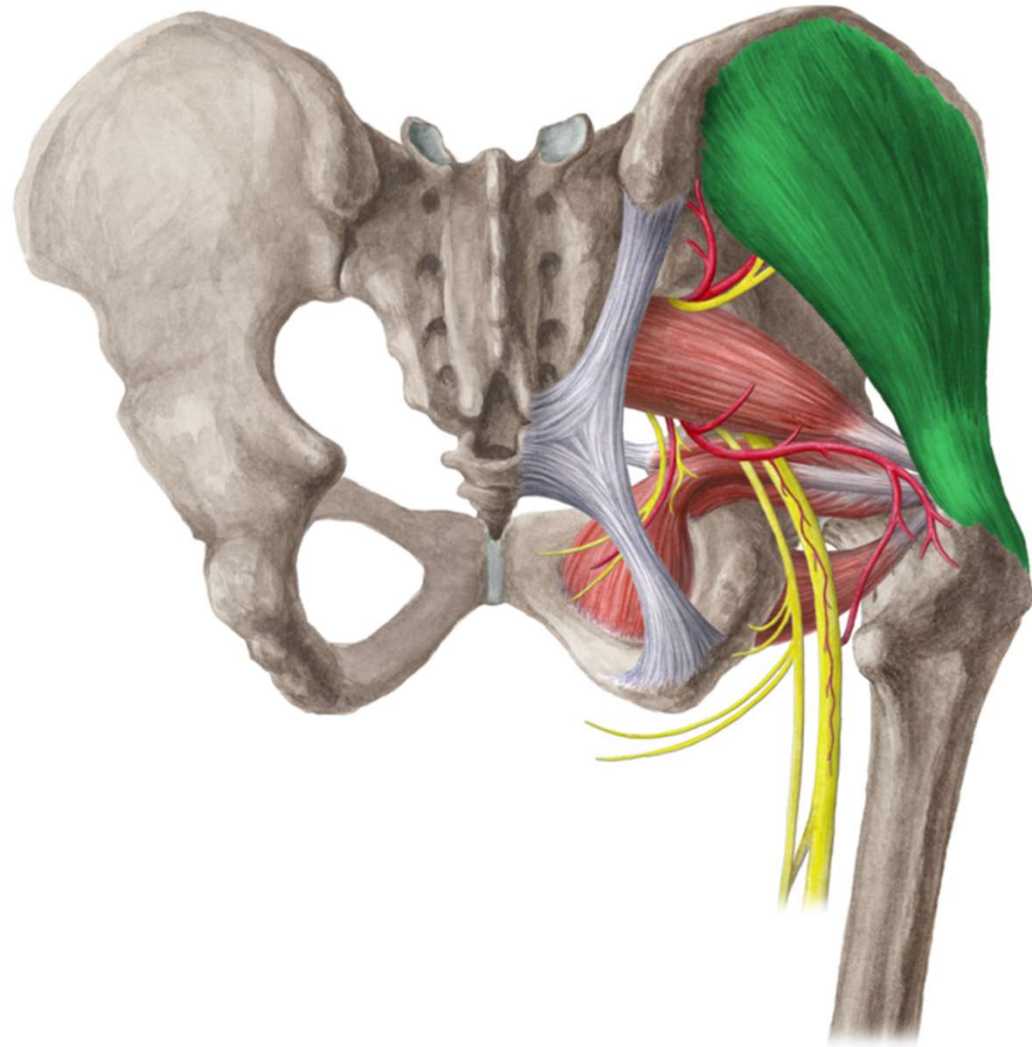






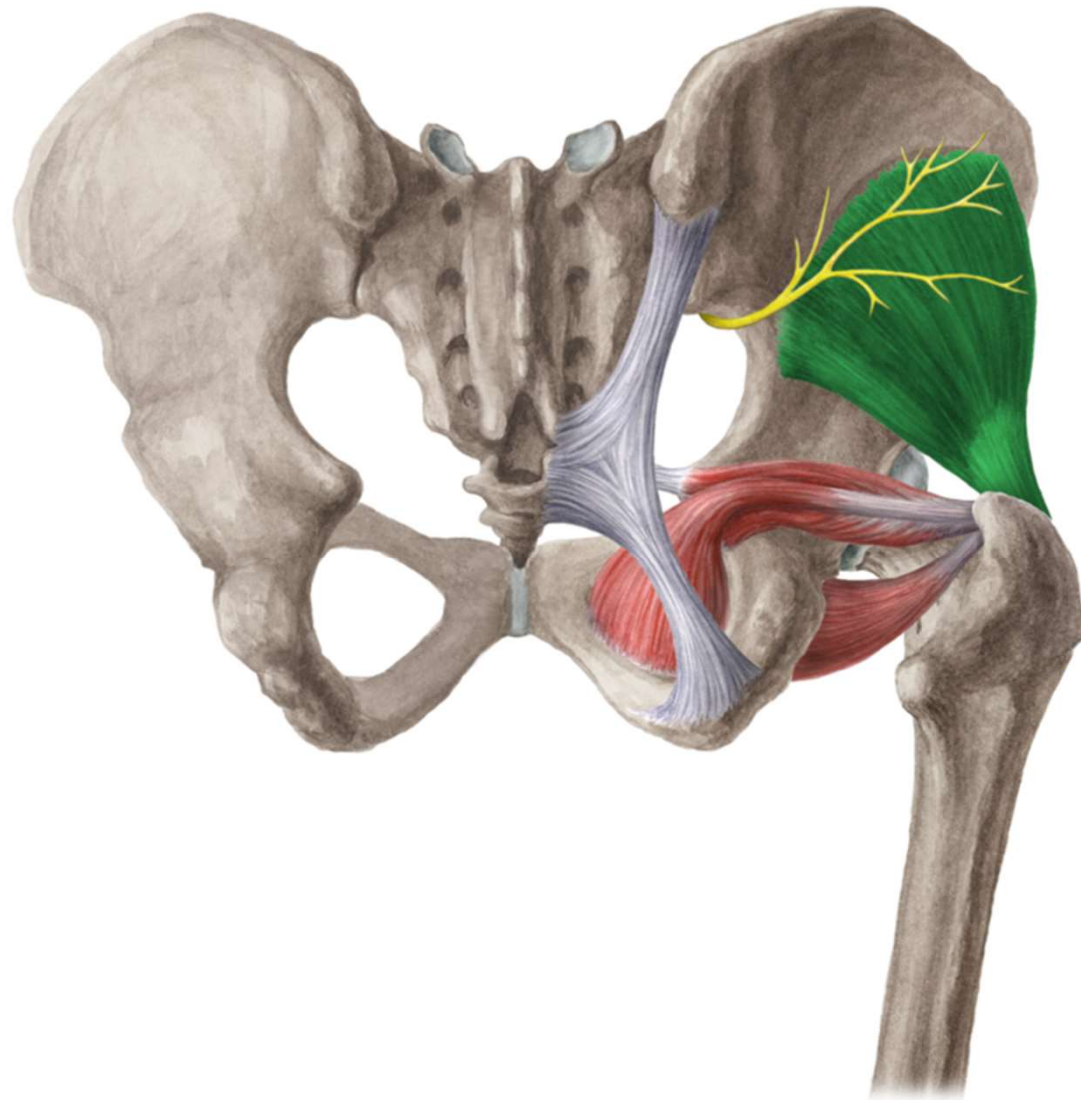
# Musculus gluteus medius

- **ORIGIN:**between linea glutea anterior et posterior, crista iliaca
- **INSERTION:**trochanter major
- **INNERVATION:** n. gluteus superior
- **FUNCTION:** abduction of hip joint, flexion, extension



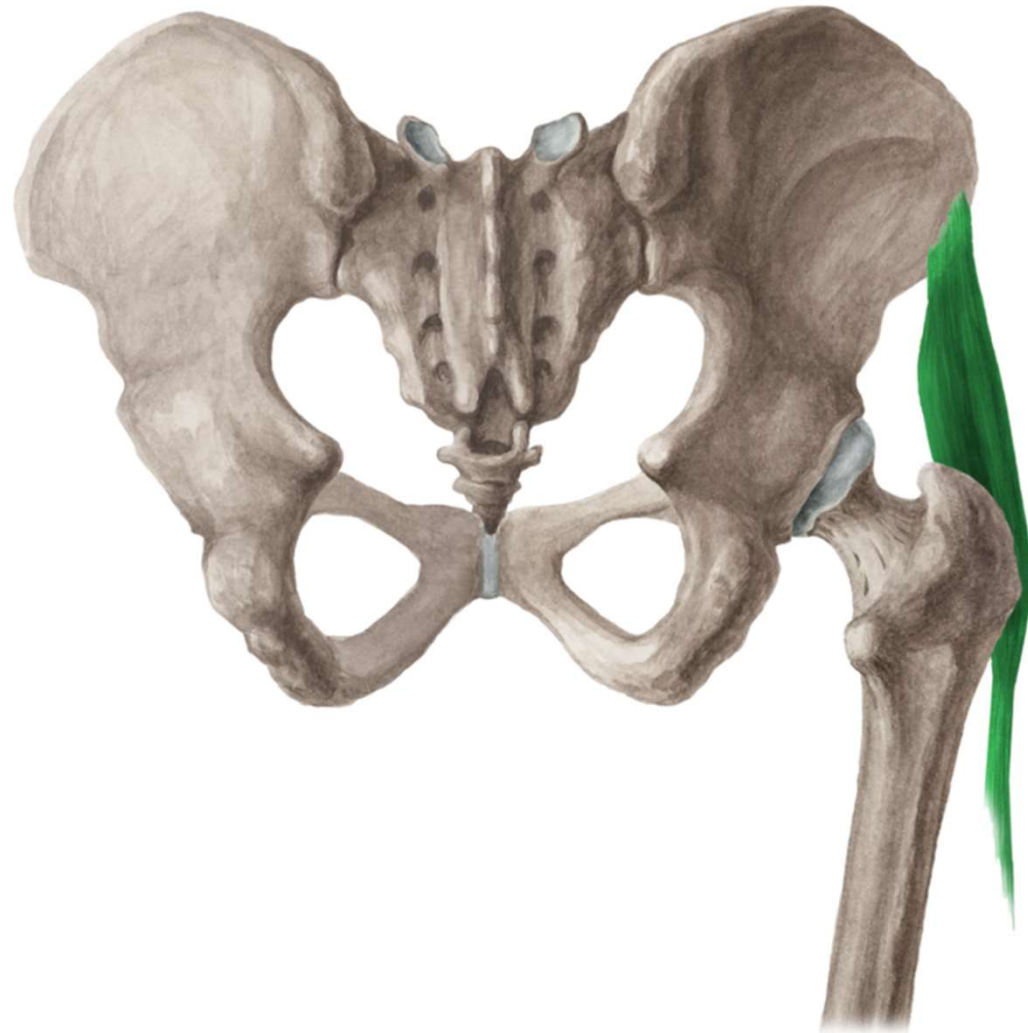
# Musculus gluteus minimus

- **ORIGIN:** between linea glutea inferior et anterior
- **INSERTION:** trochanter major
- **INNERVATION:** n. gluteus superior
- **FUNCTION:** abduction and flexion of hip joint



# Musculus tensor fasciae latae

- **ORIGIN:** spina iliaca anterior superior
- **INSERTION:** tractus iliotibialis
- **INNERVATION:** n. gluteus superior
- **FUNCTION:** it stretches tractus iliotibialis and secures stability of knee joint during extension

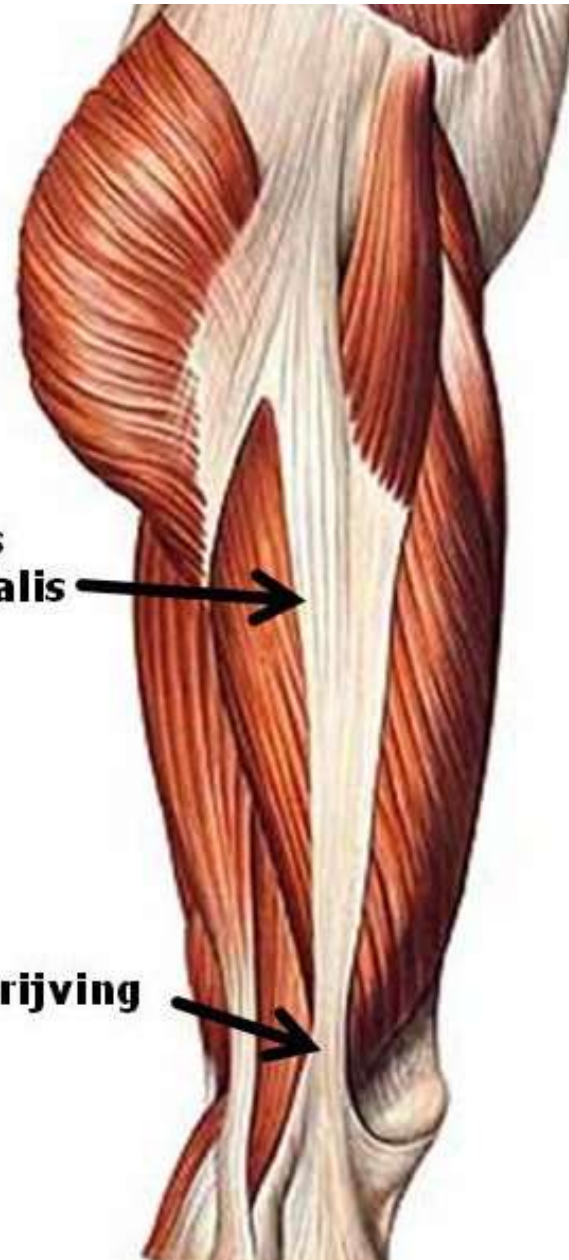




**tractus  
iliotibialis**



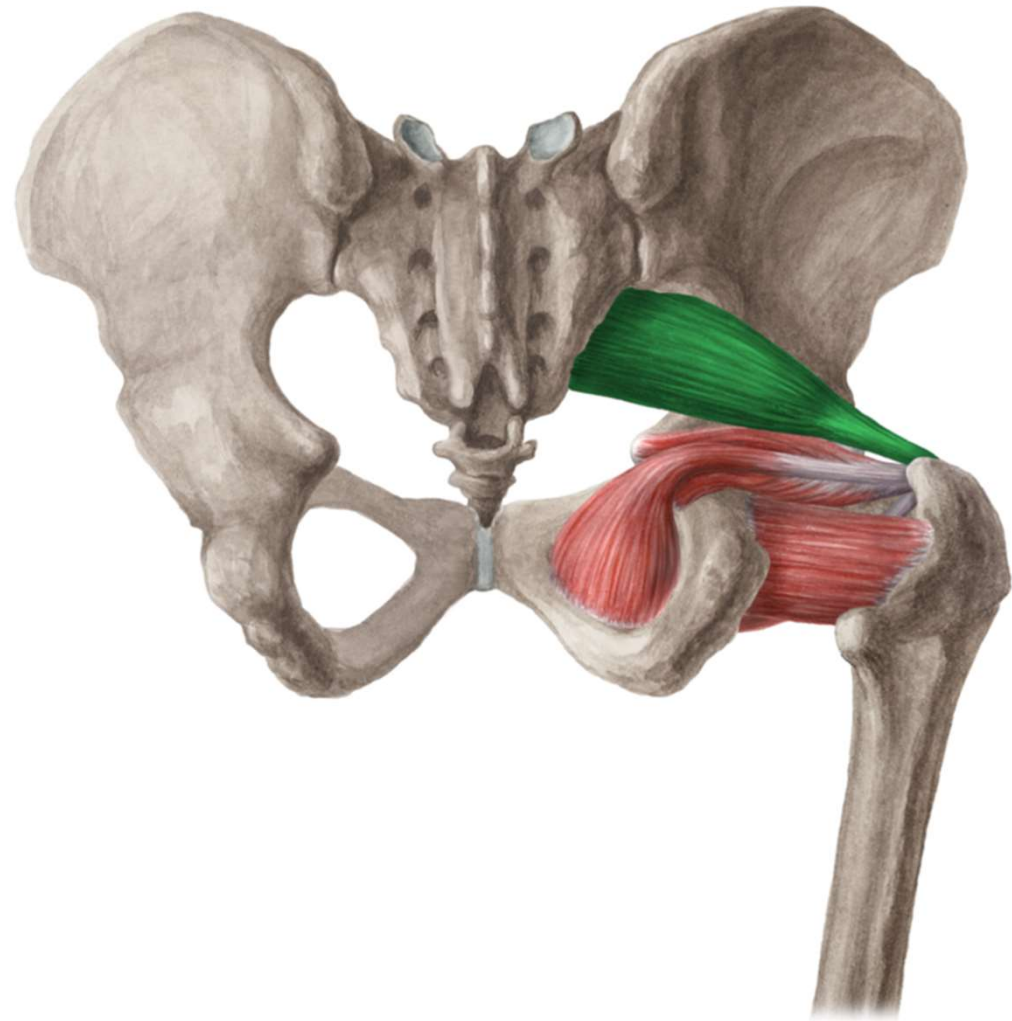
**wrijving**





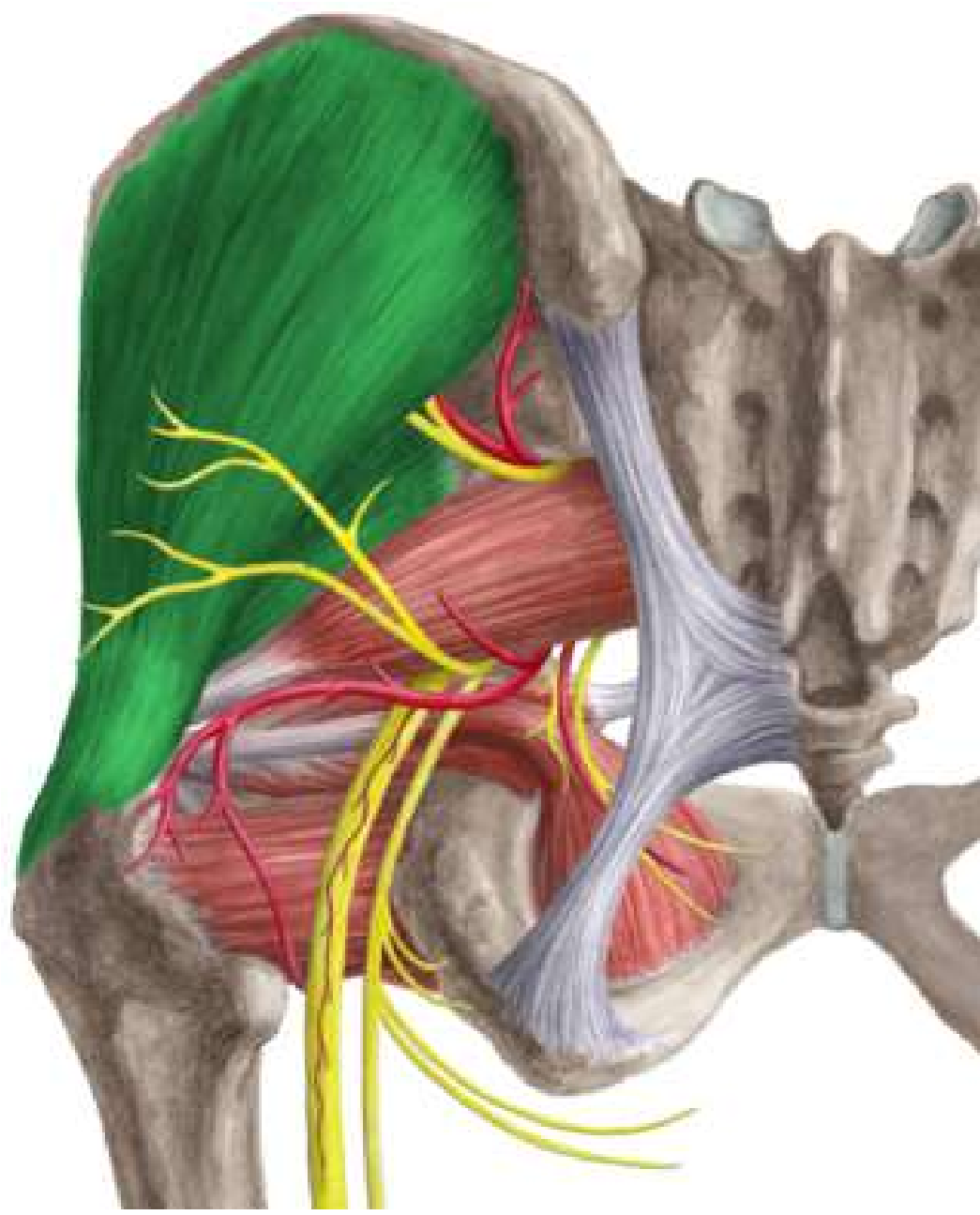
# Musculus piriformis

- **ORIGIN:** lateral part of facies pelvina osis sacri
- **INSERTION:** trochanter major
- **INNERVATION:** plexus sacralis
- **FUNCTION:** femoral supination



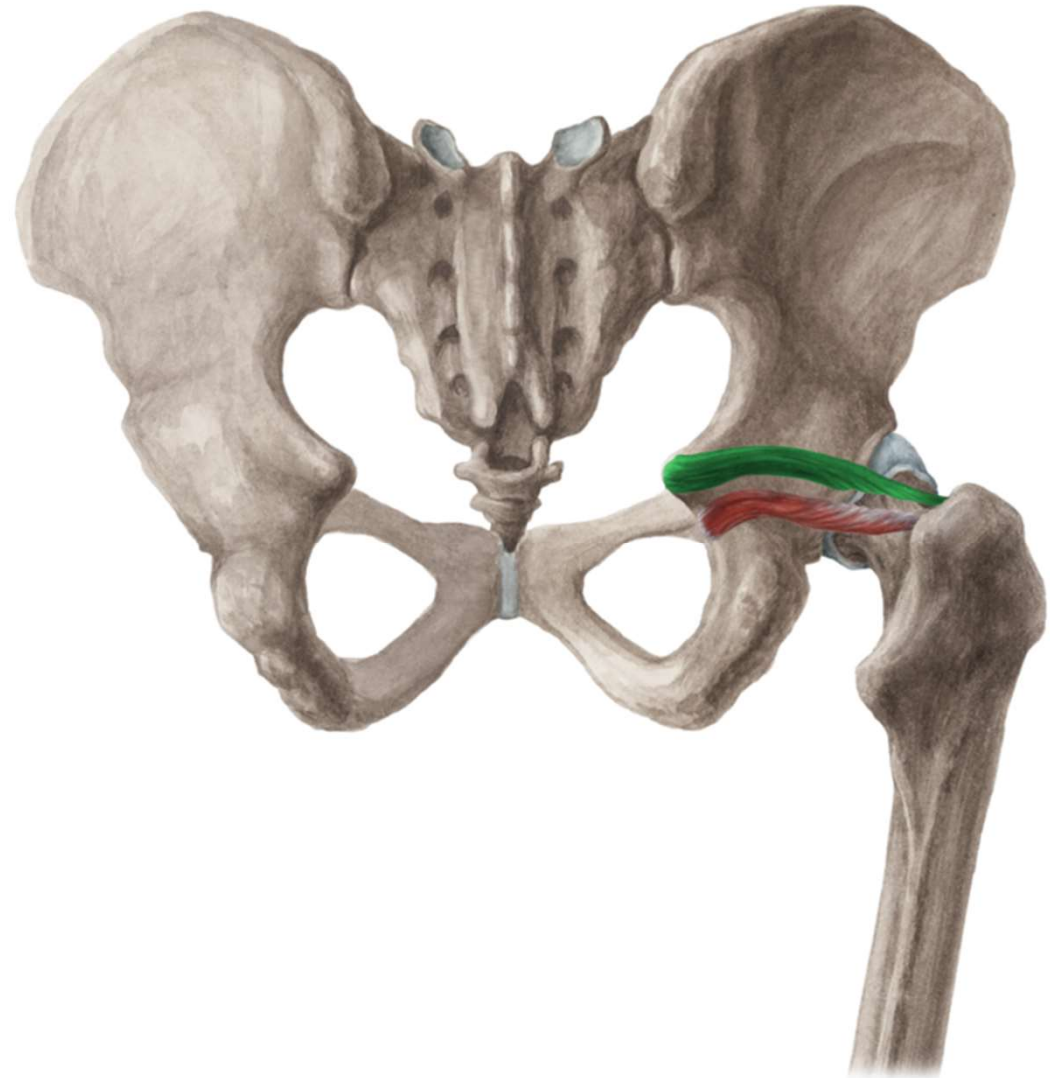






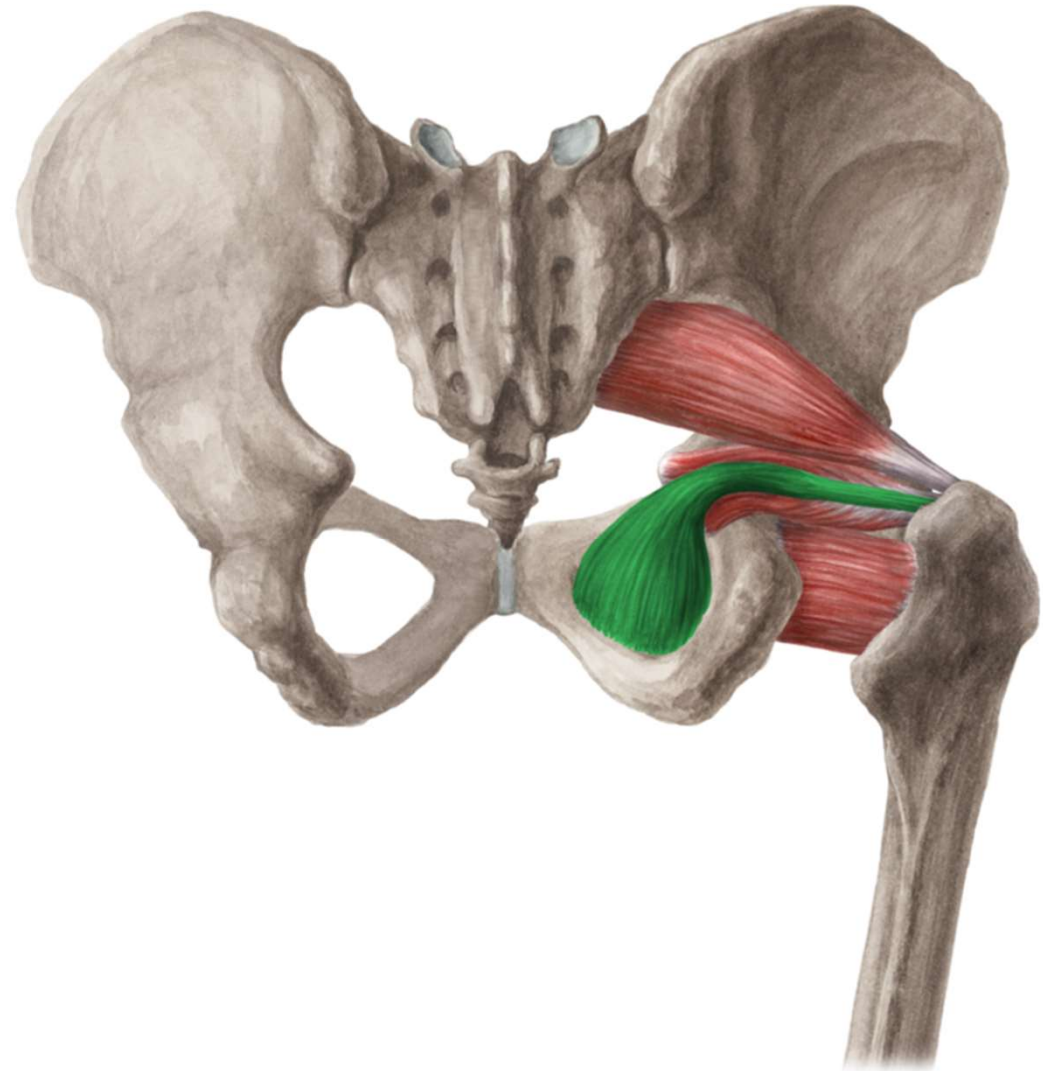
# Musculus gemellus superior

- **ORIGIN:** spina ischiadica
- **INSERTION:** fossa trochanterica
- **INNERVATION:**
- plexus sacralis
- **FUNCTION:** femoral supination

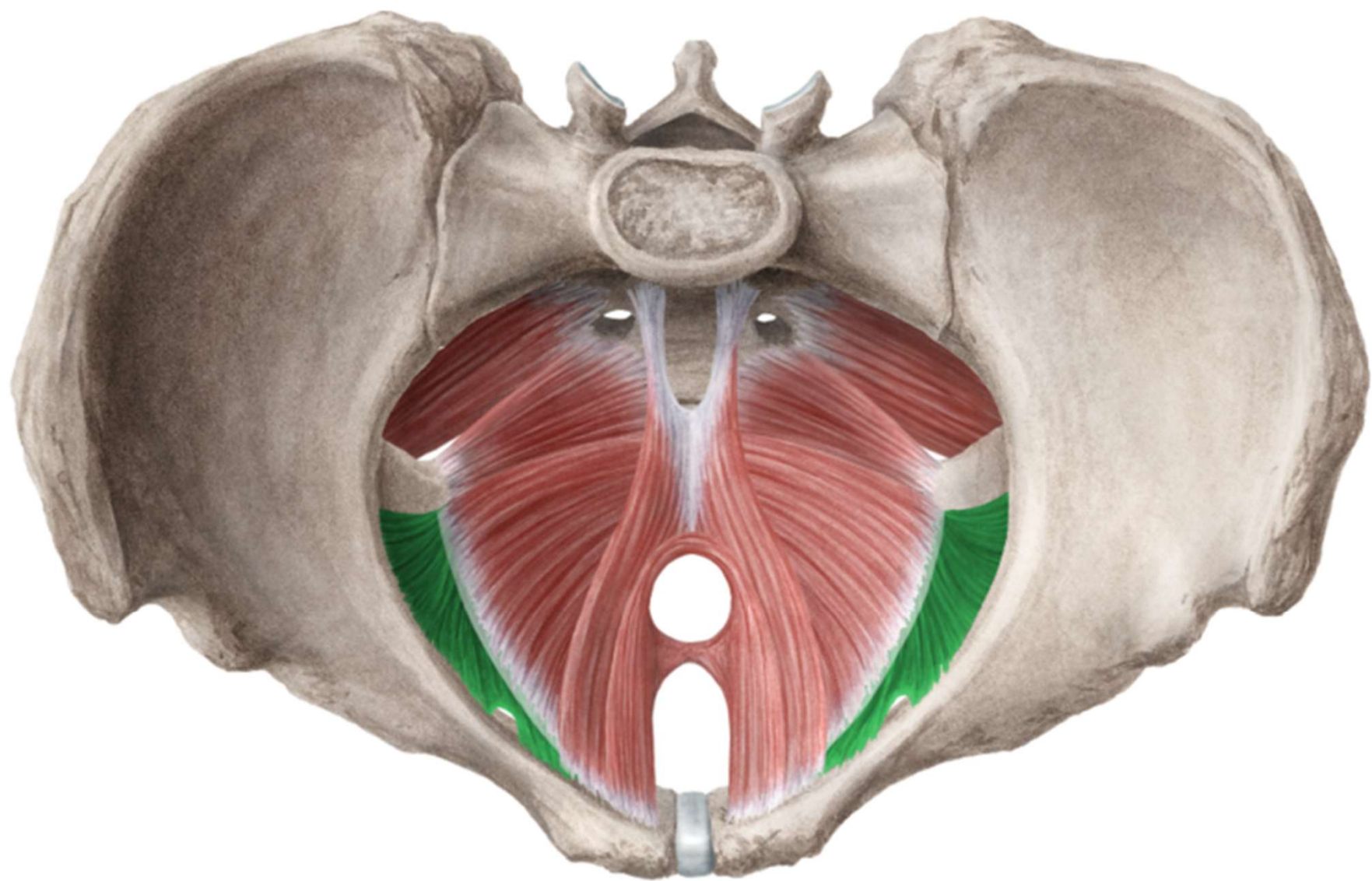


# Musculus obturatorius internus

- **ORIGIN:**  
membrana obturatoria
- **INSERTION:** fossa trochanterica
- **INNERVATION:**  
plexus sacralis
- **FUNCTION:**  
femoral supination

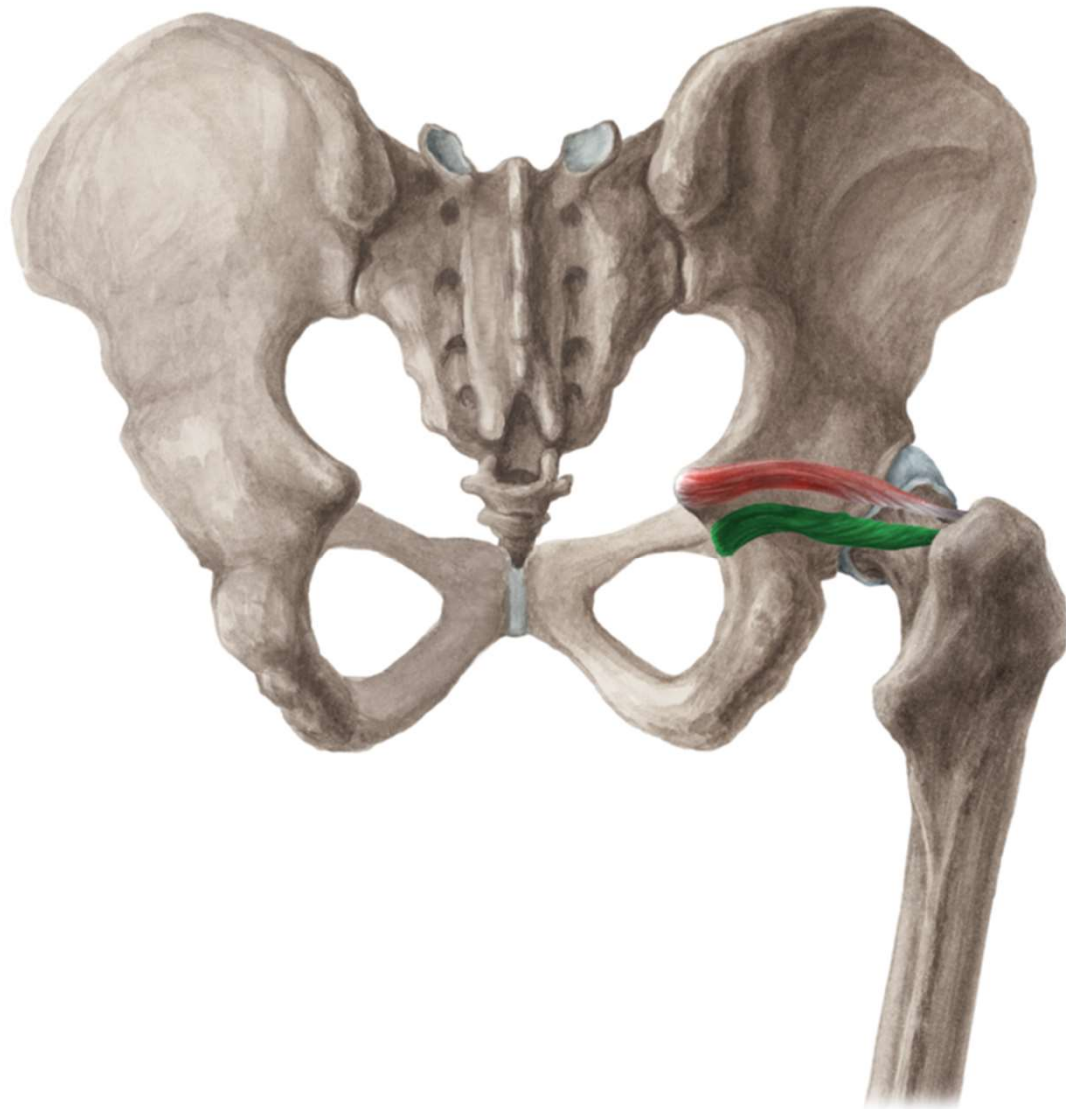






# Musculus gemellus inferior

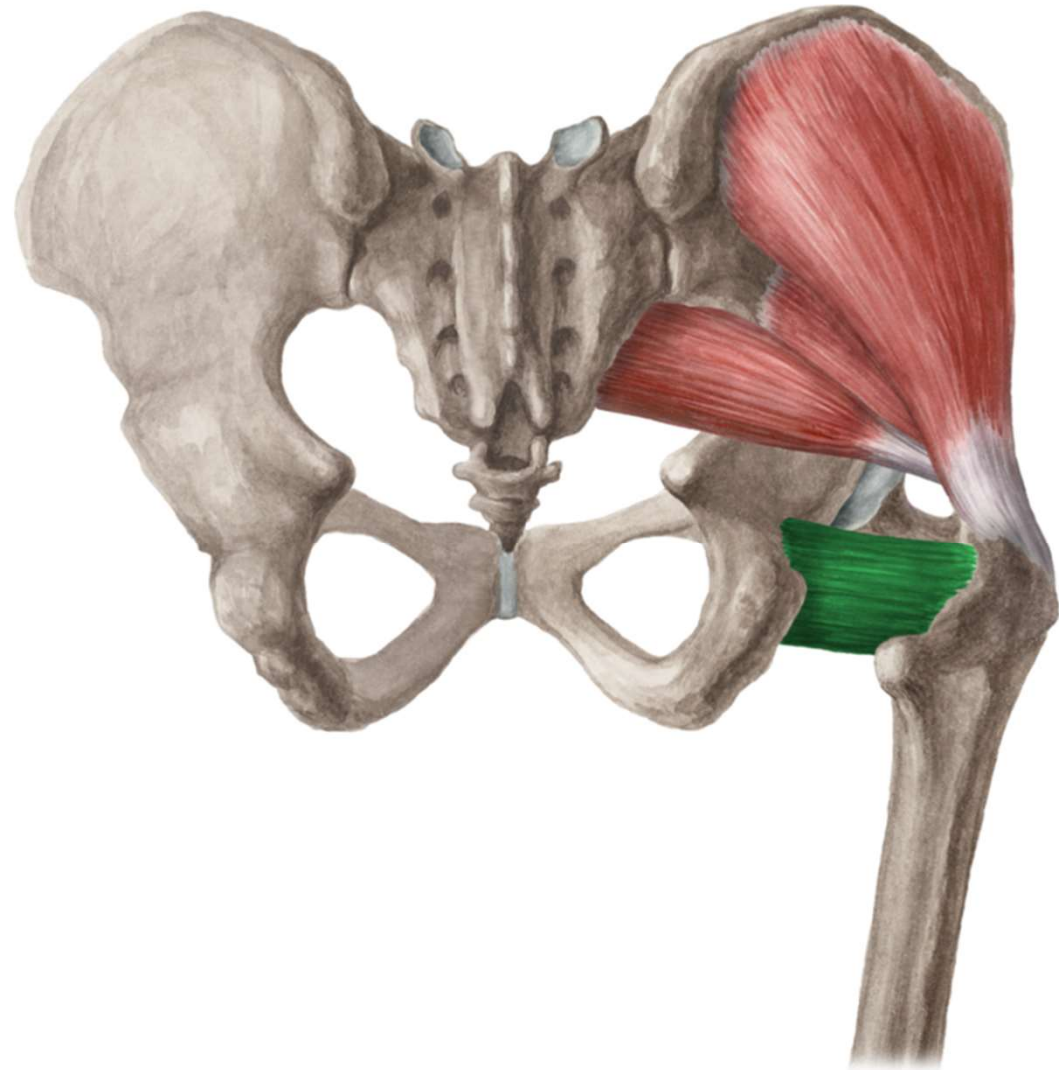
- **ORIGIN:** tuber ischiadicum
- **INSERTION:** fossa trochanterica
- **INNERVATION:** plexus sacralis
- **FUNCTION:** femoral supination





# Musculus quadratus femoris

- **ORIGIN:** tuber ischiadicum
- **INSERTION:** crista intertrochanterica
- **INNERVATION:** plexus sacralis
- **FUNCTION:** femoral supination





- Mm. femoris  
(Femoral muscles)

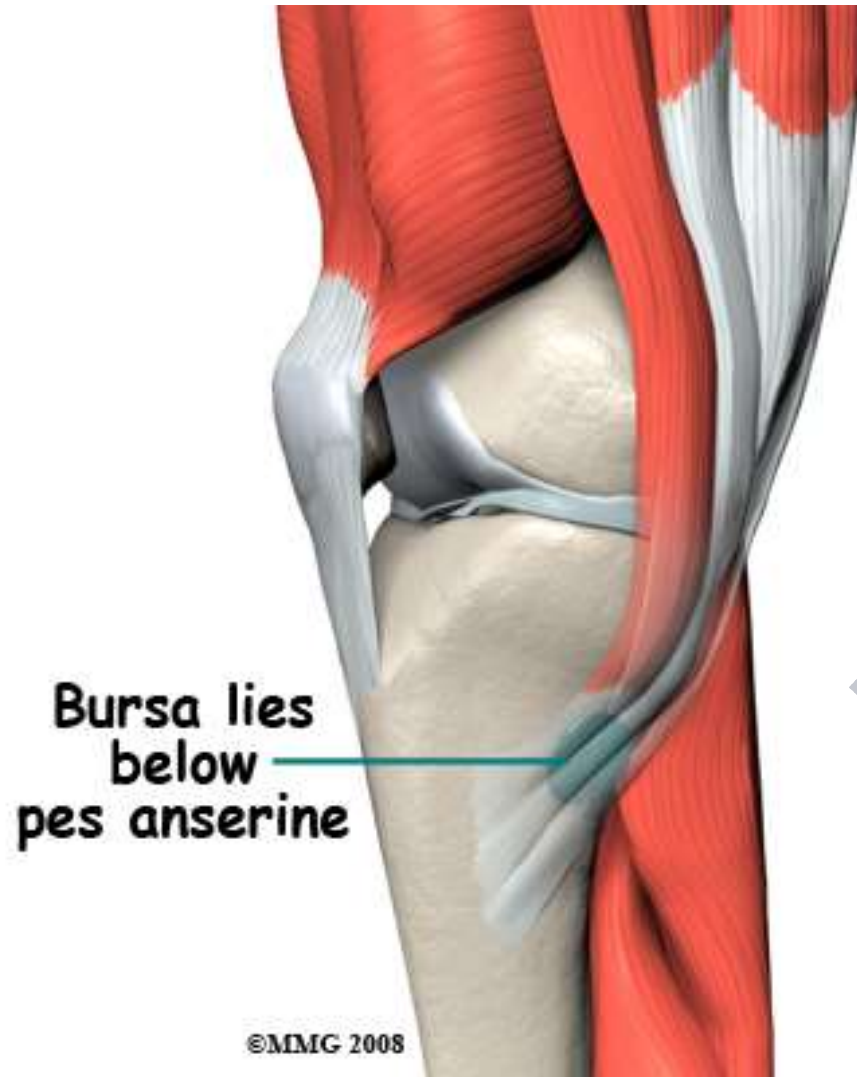
**ANTERIOR GROUP**

# Musculus sartorius

- **ORIGIN:** spina iliaca anterior superior
- **INSERTION:** pes anserinus
- **INNERVATION:** n. femoralis
- **FUNCTION:** flexion of hip joint, flexion of knee joint



# Pes anserinus





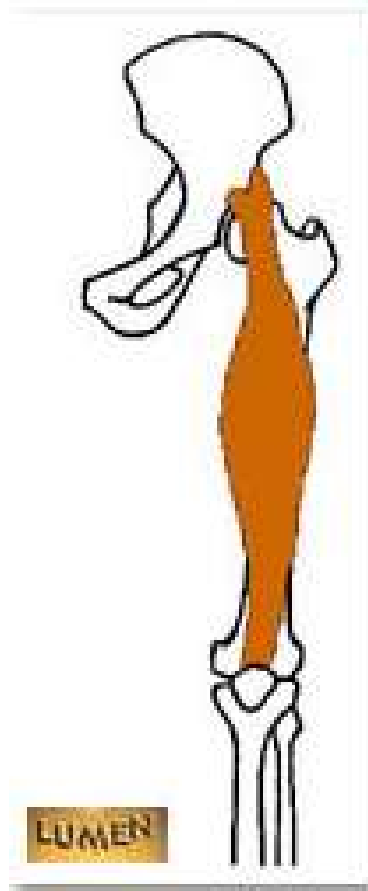
# Musculus quadriceps femoris

- **ORIGIN:** rec: spina iliaca anterior inferior, med: labium mediale, lat: labium laterale, inter: corpus femoris
- **INSERTION:** basis patellae, ligamentum patellae, tuberositas tibiae
- **INNERVATION:** n. femoralis
- **FUNCTION:** extension of knee joint  
rectus: flexion of hip joint

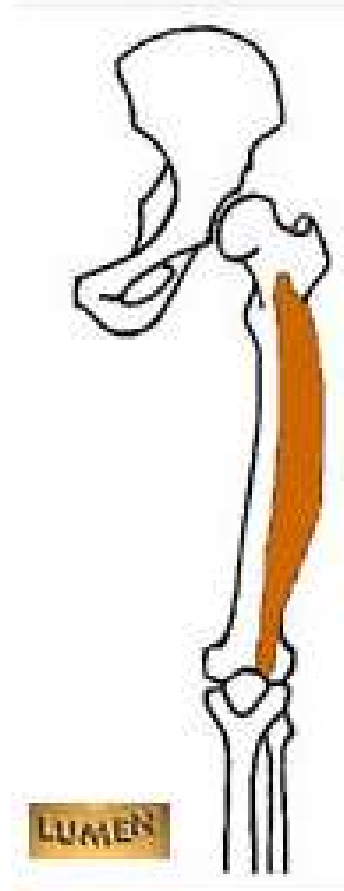


# Musculus quadriceps femoris

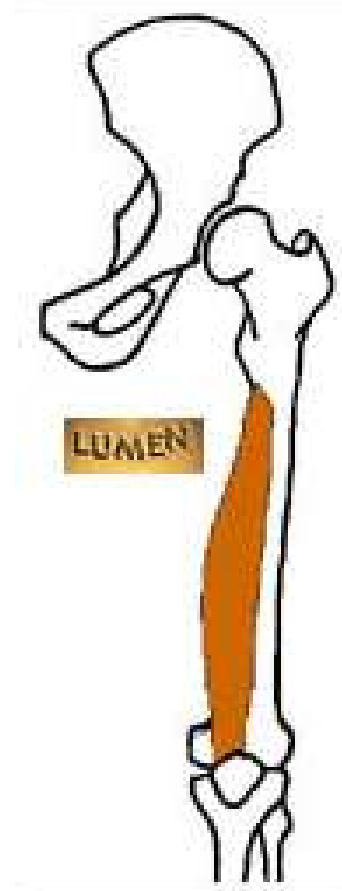
M. rectus femoris



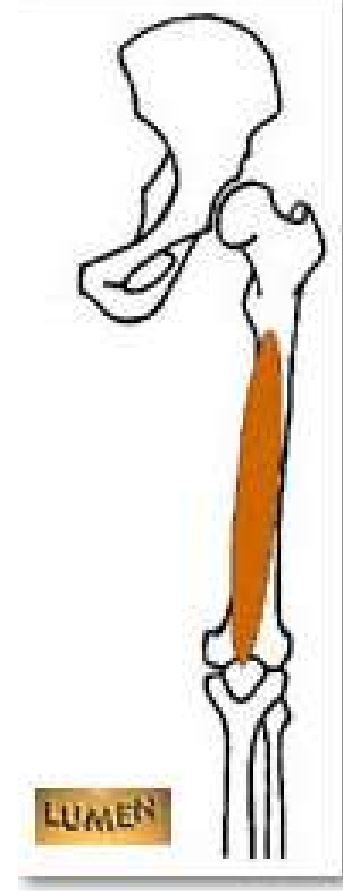
M. vastus lateralis



M. vastus medialis



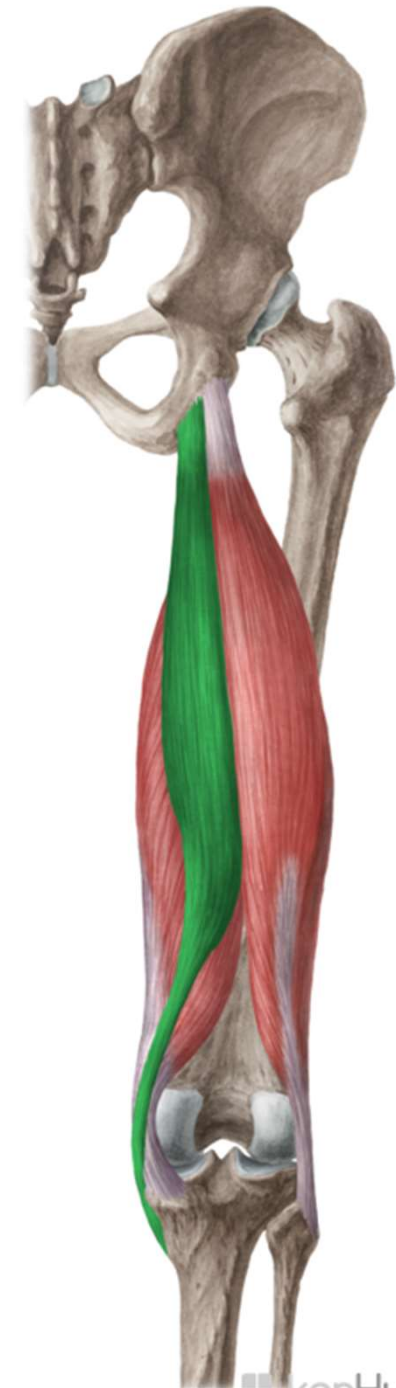
M. vastus intermedius



POSTERIOR GROUP

# Musculus semitendinosus

- ORIGIN: tuber ischiadicum
- INSERTION: pes anserinus
- INNERVATION: n. ischiadicus
- FUNCTION: extension of hip joint, flexion of knee joint



# Musculus semimebranosus

- ORIGIN: tuber ischiadicum
- INSERTION: proximal part of tibia, ligamentum popliteum obliquum
- INNERVATION: n. ischiadicus
- FUNCTION: extension of hip joint, flexion of knee joint

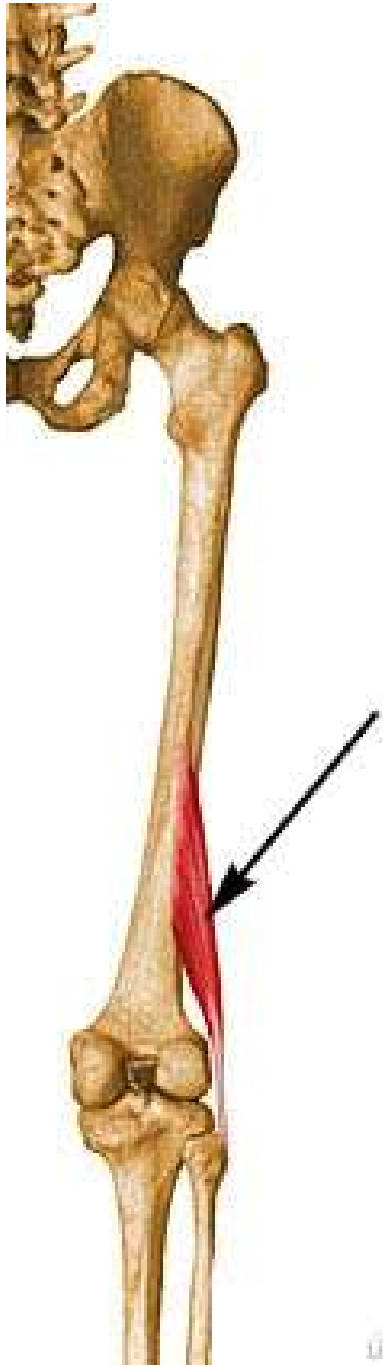
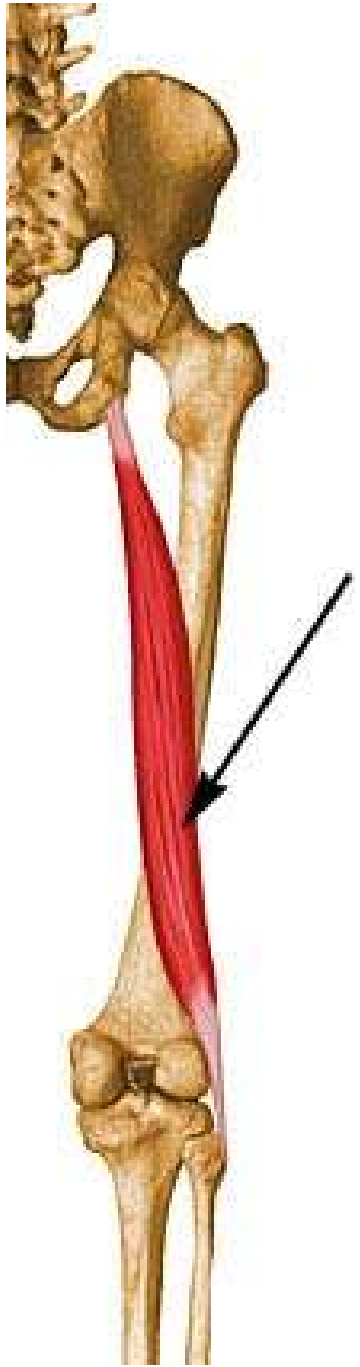


# Musculus biceps femoris

- **ORIGIN:** caput longum: tuber ischiadicum, caput breve: labium laterale lineae asperae
- **INSERTION:** caput fibulae
- **INNERVATION:** n. ischiadicus
- **FUNCTION:** flexion of knee joint, extension of hip joint







**MEDIAL GROUP**

# Musculus gracilis

- **ORIGIN:**  
ventrocaudally from symphysis
- **INSERTION:** pes anserinus
- **INNERVATION:** n. obturatorius
- **FUNCTION:** adduction of hip joint, flexion of knee joint



# Musculus adductor longus

- **ORIGIN:** ramus superior ossis pubis
- **INSERTION:** middle part of labium mediale lineae asperae
- **INNERVATION:** n. obturatorius
- **FUNCTION:** adduction of thigh



# Musculus adductor brevis

- **ORIGIN:** between ramus superior et inferior
- **INSERTION:** proximal part of labium mediale lineae asperae
- **INNERVATION:** n. obturatorius
- **FUNCTION:** adduction of thigh



# Musculus adductor magnus

- **ORIGIN:** from ramus inferior to tuber ischiadicum
- **INSERTION:** labium mediale lineae asperae, epicondylus medialis femoris
- **INNERVATION:** n. obturatorius, n. ischiadicus
- **FUNCTION:** adduction of thigh



# Musculus pectineus

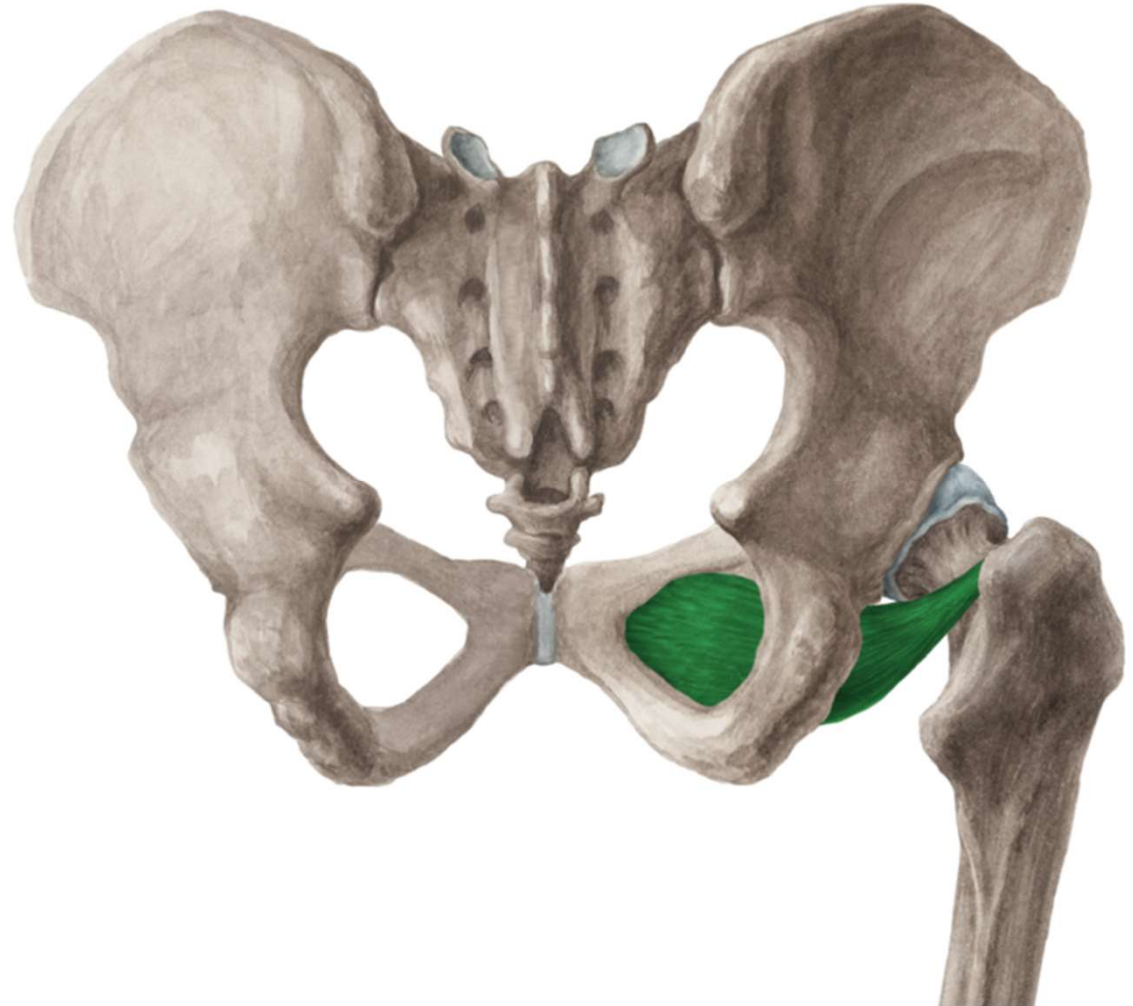
- ORIGIN: pecten ossis pubis
- INSERTION: linea pectinea femoris
- INNERVATION: n. obturatorius, n. femoralis
- FUNCTION: adduction of thigh

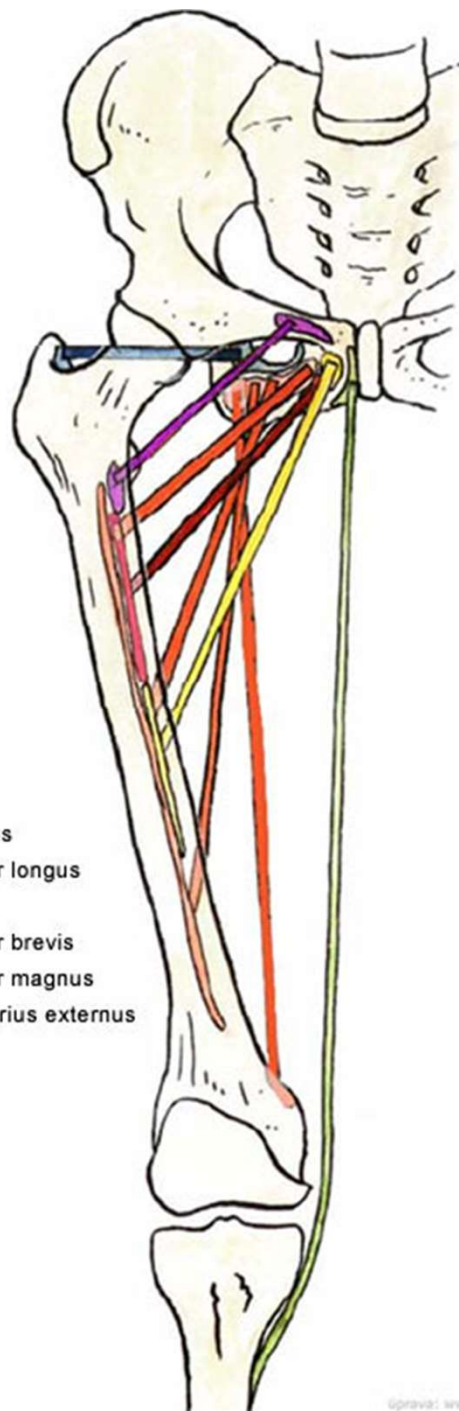




# Musculus obturatorius externus

- **ORIGIN:** external surface of membrana obturatoria
- **INSERTION:** fossa trochanterica
- **INNERVATION:** n. obturatorius
- **FUNCTION:** supination of hip joint



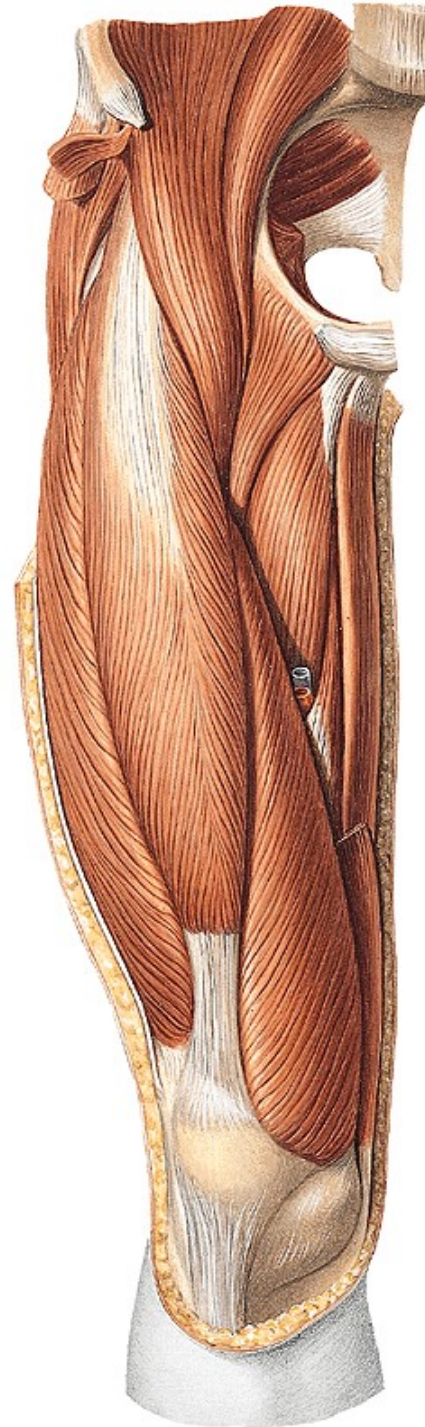
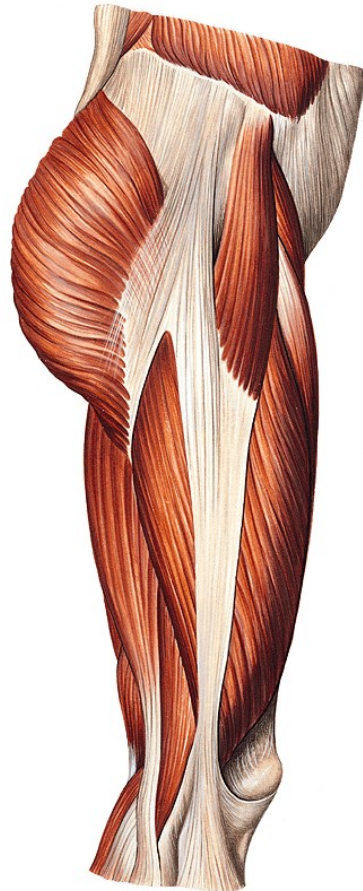
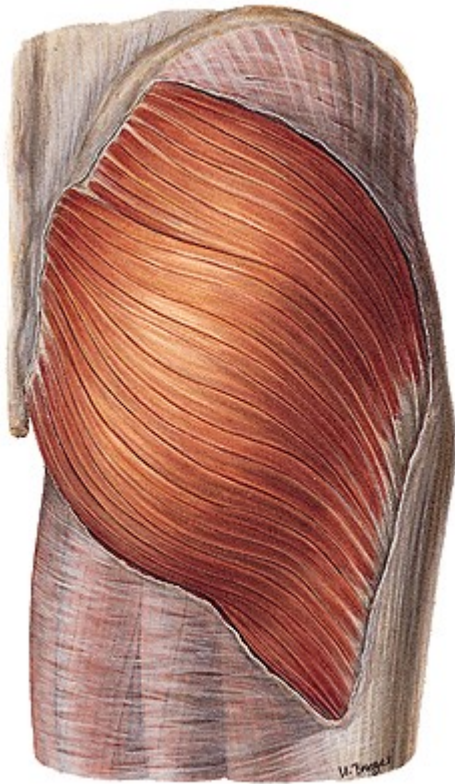


- musculus pectineus
- musculus adductor longus
- musculus gracilis
- musculus adductor brevis
- musculus adductor magnus
- musculus obturatorius externus



## FEMORAL FASCIAE

- Fascia lata- tractus iliotibialis



**Thank you for your attention!**

**Obrázky:**

**<https://www.kenhub.com>**