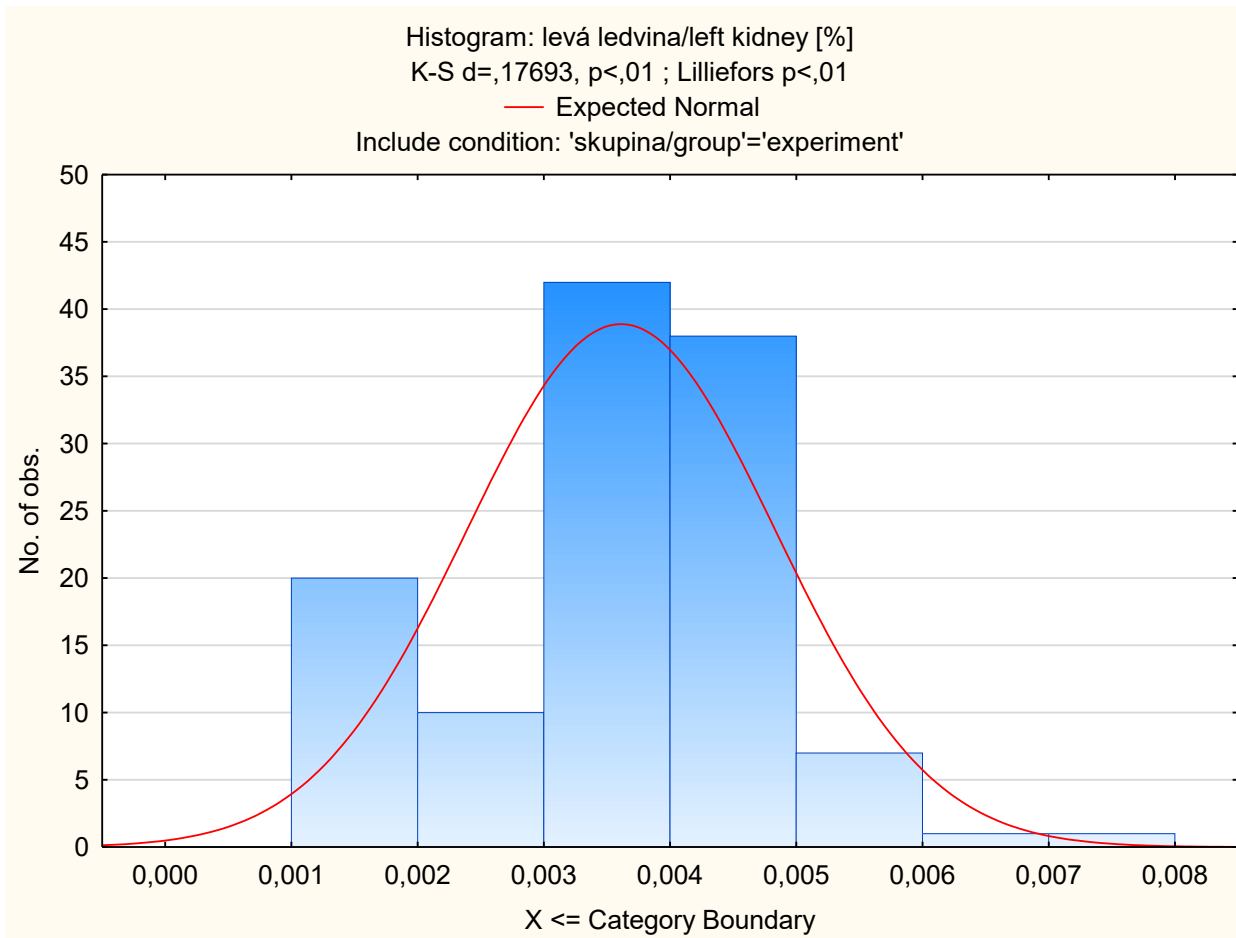
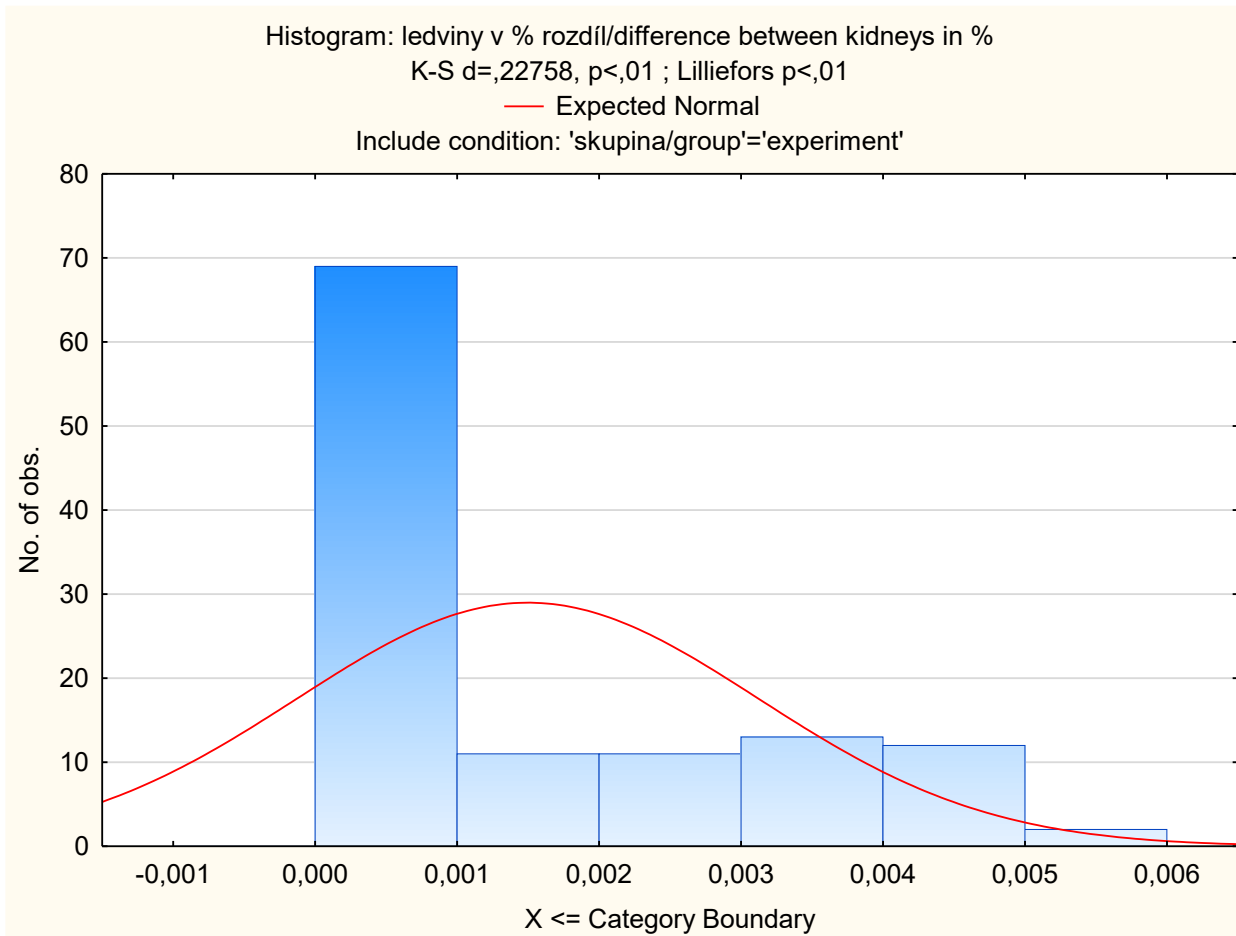


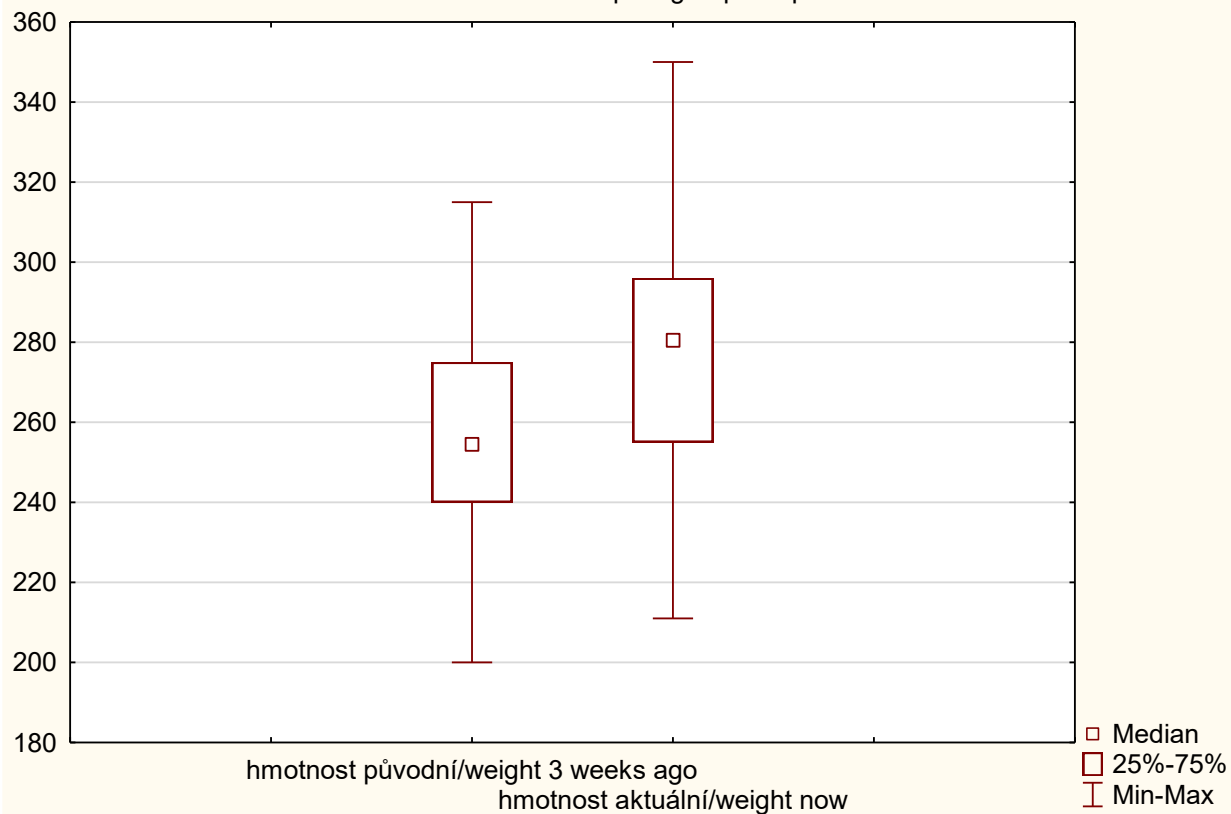
Histogramy u experimentální skupiny: levá ledvina, rozdíl mezi ledvinami / histograms in experimental group: left kidney, difference between kidneys





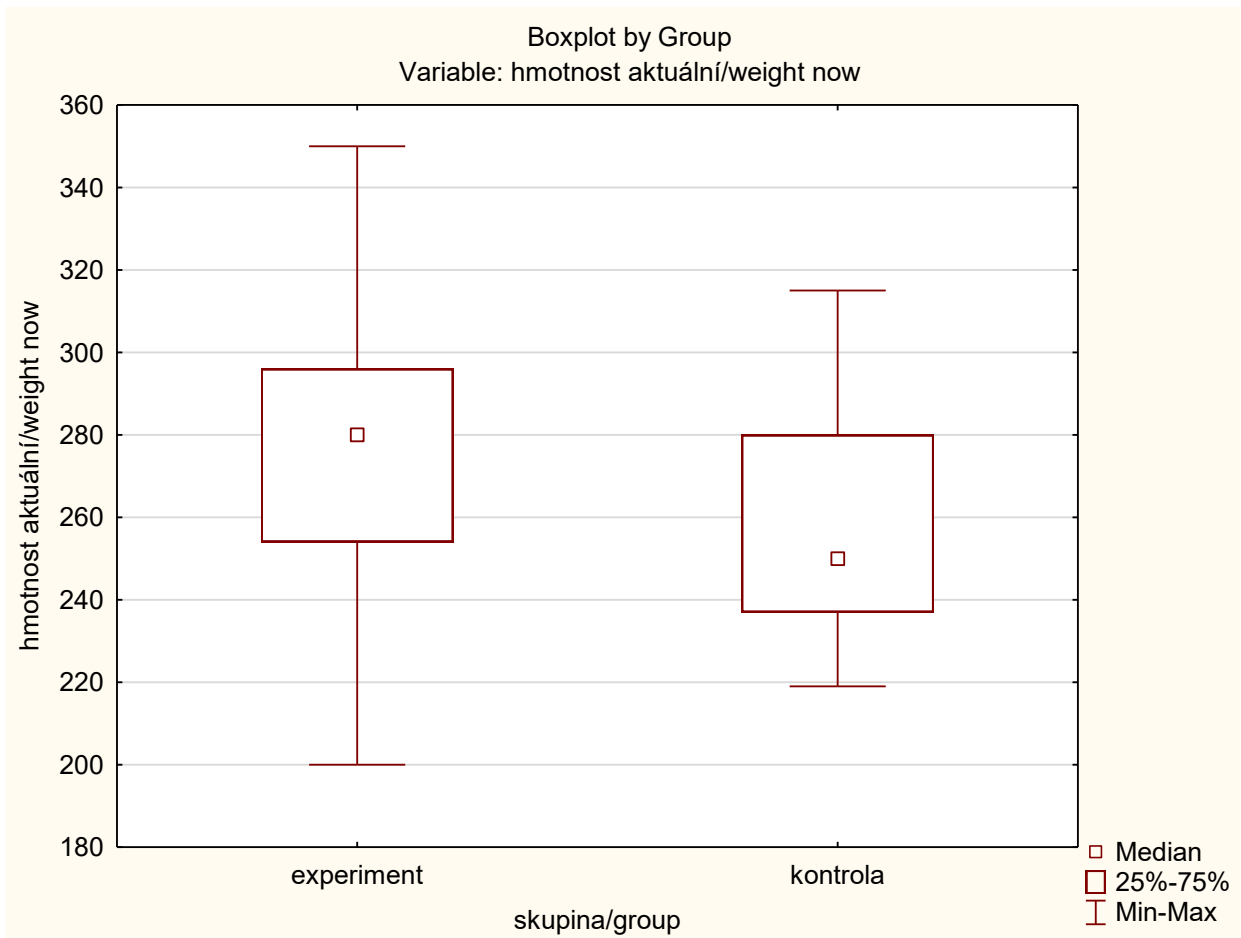
Vývoj hmotnosti zvířete během 3 týdnů: párový t-test / change in body mass in 3 weeks: t-test for dependent data

Box & Whisker Plot
 hmotnost původní/weight 3 weeks ago vs. hmotnost aktuální/weight now
 Include condition: 'skupina/group'='experiment'

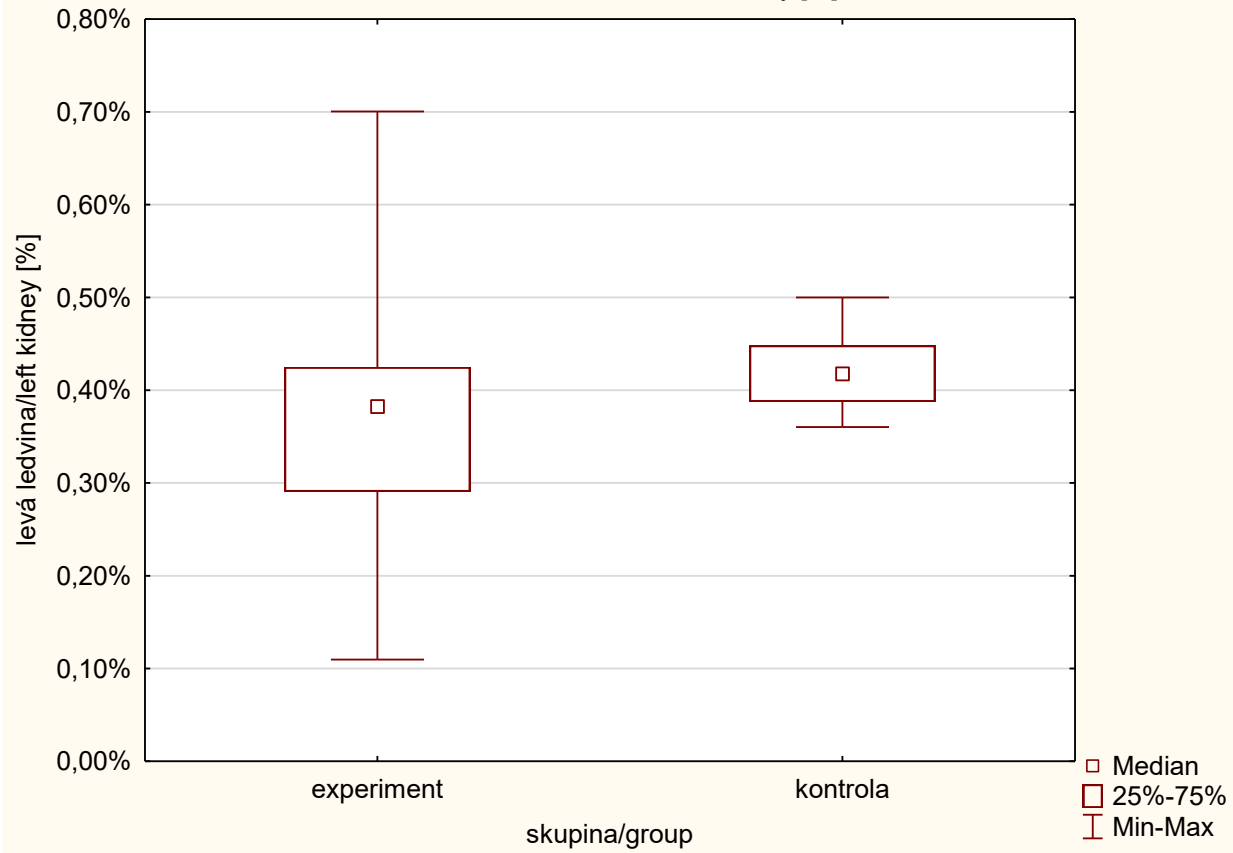


		T-test for Dependent Samples (renin_2021_corr_final)									
		Marked differences are significant at p < ,05000									
		Include condition: 'skupina/group'='experiment'									
Variable		Mean	Std.Dv.	N	Diff.	Std.Dv. Diff.	t	df	p	Confidence -95,000%	Confidence +95,000%
hmotnost původní/weight 3 weeks ago		255,9043	25,12167								
hmotnost aktuální/weight now		278,6383	27,44686	94	-22,7340	18,39774	-11,9805	93	0,000000	-26,5023	-18,9658

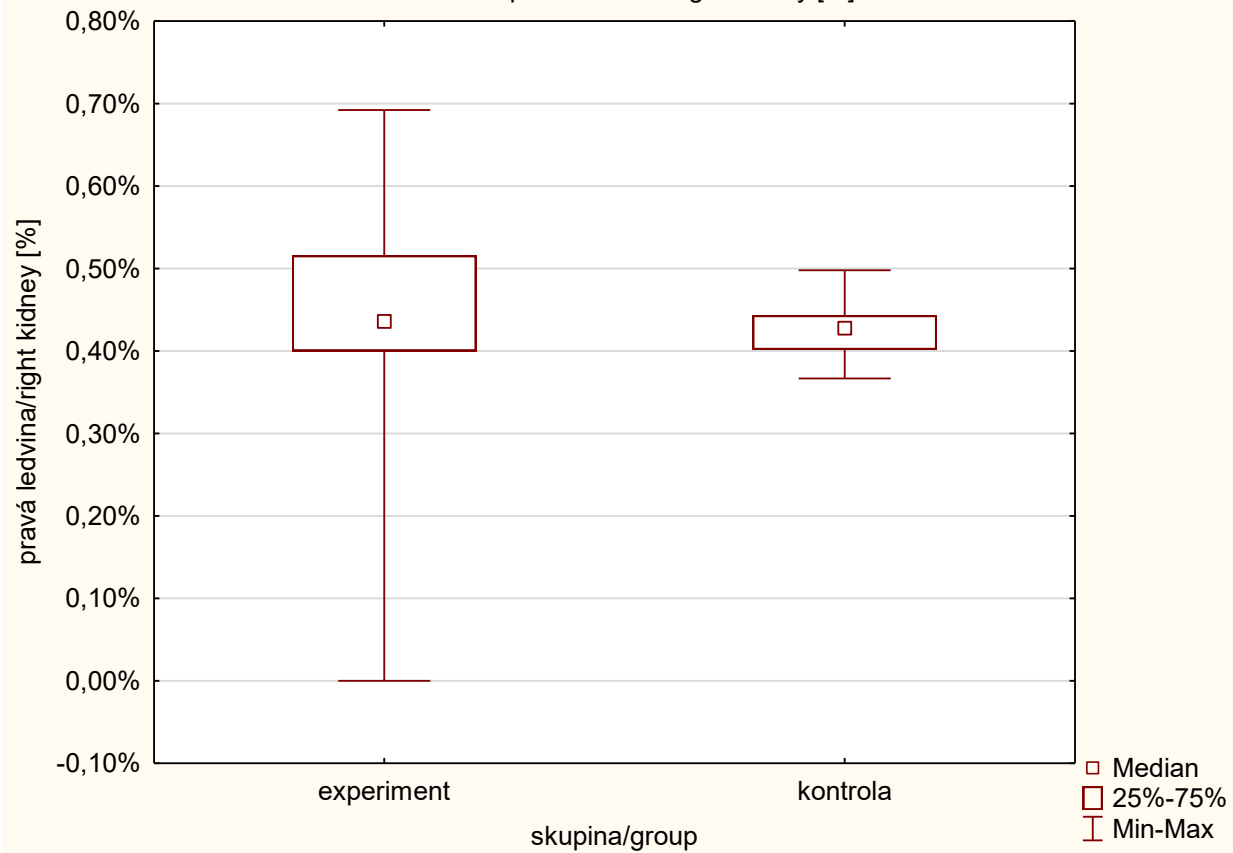
Srovnání experimentální a kontrolní skupiny: Mann-Whitney U-test / Comparison of experimental and control group: Mann-Whitney U-test



Boxplot by Group
Variable: levá ledvina/left kidney [%]

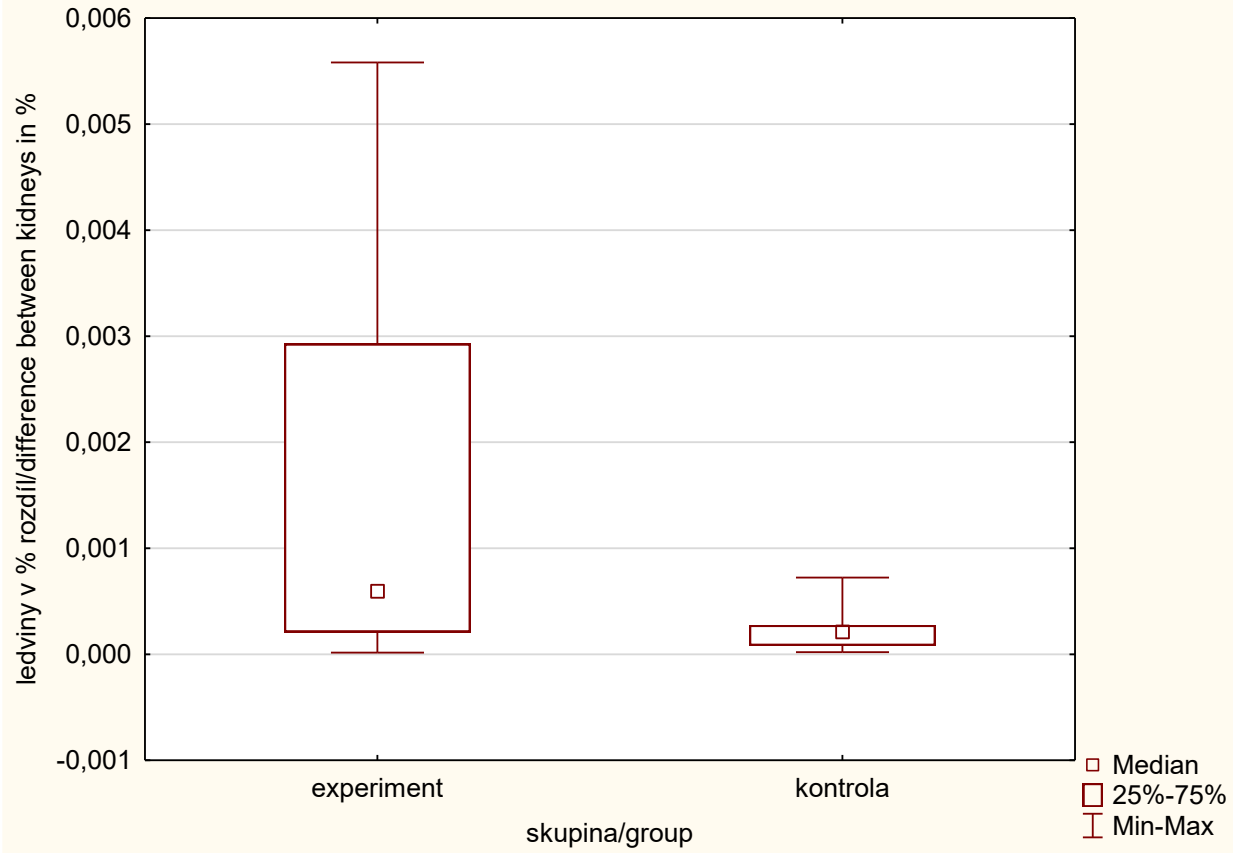


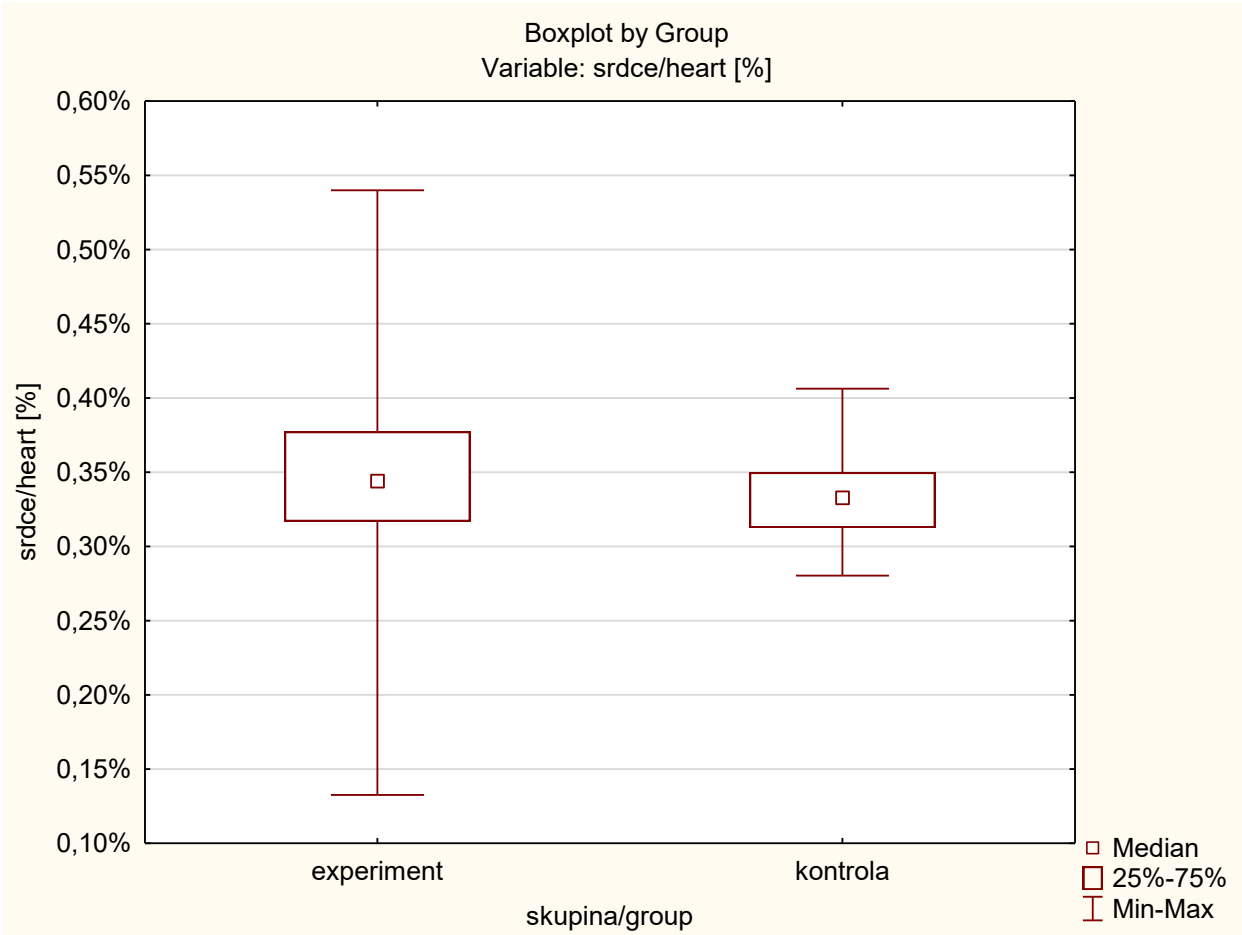
Boxplot by Group
Variable: pravá ledvina/right kidney [%]



Boxplot by Group

Variable: ledviny v % rozdíl/difference between kidneys in %





Mann-Whitney U Test (w / continuity correction) (renin_2021_corr_final)

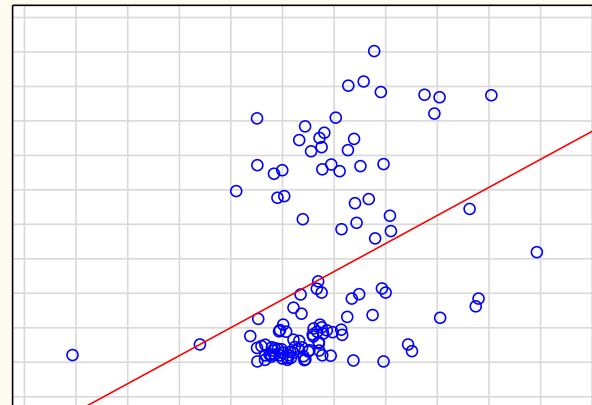
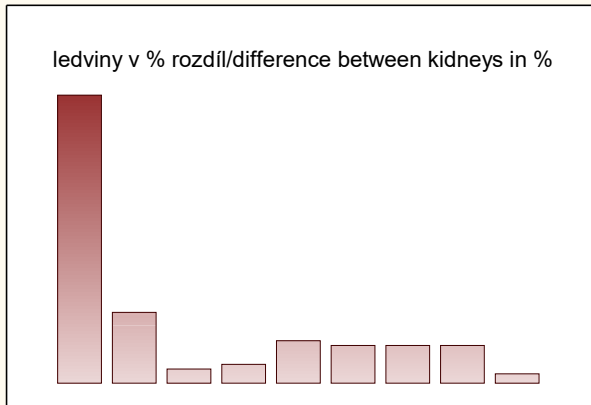
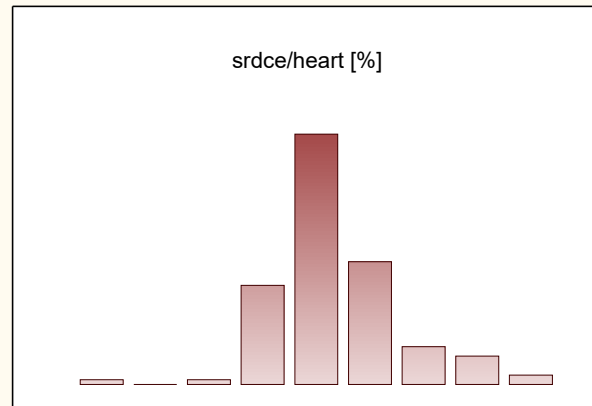
By variable skupina/group

Marked tests are significant at $p < ,05000$

variable	Rank Sum experiment	Rank Sum kontrola	U	Z	p-value	Z adjusted	p-value	Valid N experiment	Valid N kontrola	2* e
hmotnost aktuáln/w eight now	9058,000	1095,000	819,000	3,03989	0,002367	3,04068	0,002361	119	23	0
levá ledvina/left kidney [%]	8000,500	2152,500	860,500	-2,81010	0,004953	-2,81010	0,004953	119	23	0
pravá ledvina/right kidney [%]	8758,500	1394,500	1118,500	1,38152	0,167121	1,38152	0,167121	119	23	0
ledviny v % rozdi/difference between kidneys in %	9143,000	868,000	592,000	4,26598	0,000020	4,26600	0,000020	118	23	0
srdce/heart [%]	8612,500	1398,500	1122,500	1,30574	0,191641	1,30574	0,191640	118	23	0

Korelace rozdílu ledvin a hmotnosti srdce u obou skupin: Spearmanův koeficient / Correlation of kidney difference and heart mass in both groups: Spearman coefficient

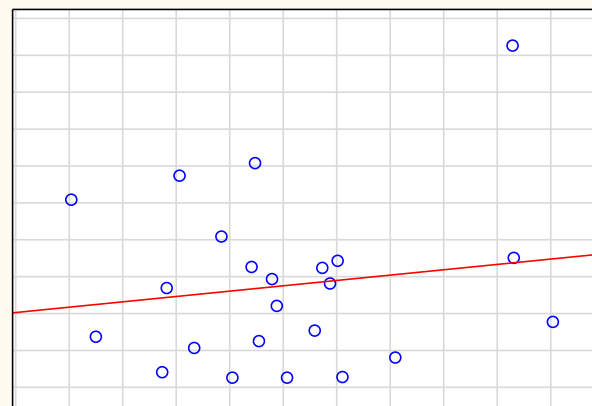
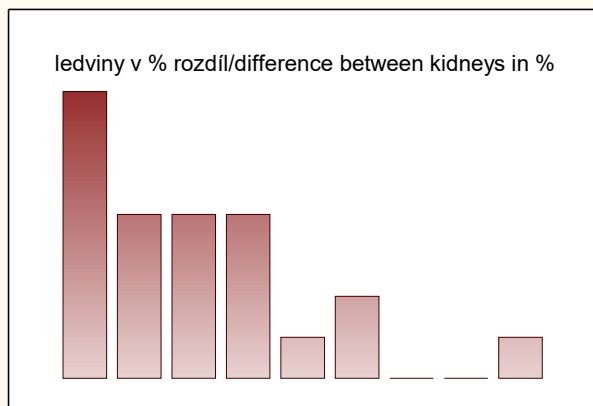
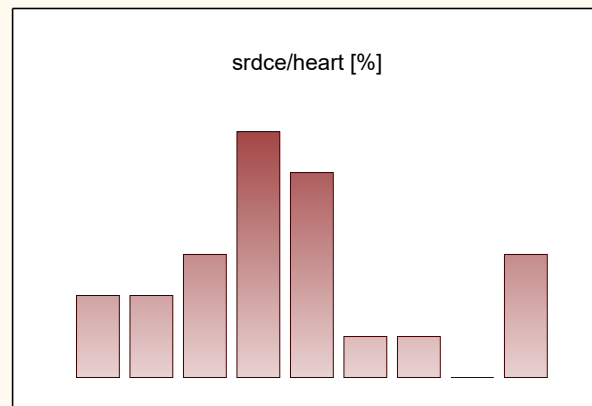
skupina/group=experiment
Correlations (renin_2021_corr_final 47v*150c)



skupina/group=experiment
Spearman Rank Order Correlations (renin_2021_corr_final)
MD pairwise deleted
Marked correlations are significant at p <,05000

Pair of Variables	Valid N	Spearman R	t(N-2)	p-value
ledviny v % rozdíl/difference between kidneys in % & srdce/heart [%]	117	0,463208	5,604918	0,000000

skupina/group=kontrola
 Correlations (renin_2021_corr_final 47v*150c)



skupina/group=kontrola
 Spearman Rank Order Correlations (renin_2021_corr_final)
 MD pairwise deleted
 Marked correlations are significant at $p < ,05000$

Pair of Variables

Pair of Variables	Valid N	Spearman R	t(N-2)	p-value
ledviny v % rozdíl/difference between kidneys in % & srdce/heart [%]	23	0,013834	0,063401	0,950047